

OBEY



SUMMER 2024 | WOMENS COLLECTION



THE OBEY CAMPAIGN CAN BE EXPLAINED AS AN EXPERIMENT IN PHENOMENOLOGY. THE FIRST AIM OF PHENOMENOLOGY IS TO REAWAKEN A SENSE OF WONDER ABOUT ONE'S ENVIRONMENT. THE OBEY CAMPAIGN ATTEMPTS TO STIMULATE CURIOSITY AND BRING PEOPLE TO QUESTION BOTH THE CAMPAIGN AND THEIR RELATIONSHIP WITH THEIR SURROUNDINGS. BECAUSE PEOPLE ARE NOT USED TO SEEING ADVERTISEMENTS OR PROPAGANDA FOR WHICH THE MOTIVE IS NOT OBVIOUS, FREQUENT AND NOVEL ENCOUNTERS WITH OBEY PROPAGANDA PROVOKE THOUGHT AND POSSIBLE FRUSTRATION, NEVERTHELESS REVITALIZING THE VIEWER'S PERCEPTION AND ATTENTION TO DETAIL. TO CATALYZE A THOUGHTFUL DIALOGUE DECONSTRUCTING THE PROCESS OF IMAGE ABSORPTION IS THE ULTIMATE GOAL. ALL IN THE NAME OF FUN AND OBSERVATION.

THE MEDIUM IS THE MESSAGE.

HISTORY



1989

OG STICKER – WHAT STARTED AS A JOKE, BECAME AN OBSESSION. FIRST SHOWING UP IN PROVIDENCE, RHODE ISLAND, THE IMAGE QUICKLY SPREAD DOWN THE EAST COAST AND BEYOND. TO DATE, OVER TEN MILLION STICKERS HAVE BEEN PROLIFERATED WORLDWIDE.

1990

OBEY CAMPAIGN - INSPIRED BY JOHN CARPENTER'S CULT CLASSIC FILM THEY LIVE, THE SLOGAN OBEY WAS ADOPTED TO ACCOMPANY THE IMAGE. "IT WAS TOTALLY CAMPY, BUT I REALLY LIKED THE SUBVERSIVE ELEMENTS OF IT, HOW PEOPLE ARE SLAVES TO CONSUMERISM BECAUSE EVERYTHING IS GLOSSY ON THE SURFACE."

1995

OBEY ICON FACE - SHEPARD STYLIZES THE ICON FACE EVOLVING AWAY FROM THE OG STICKER. INFLUENCED BY GEORGE ORWELL'S "BIG BROTHER" IMAGE, THE STREAMLINED GRAPHIC APPROACH OF THE RUSSIAN CONSTRUCTIVIST POSTER, AND BARBARA KRUGER'S USE OF FONT AND COLOR, A NEW PHASE OF THE STORY EMERGES.

1995

SUBLIMINAL PROJECTS – A MULTI-FUNCTIONAL PROJECT SPACE AND GALLERY ESTABLISHED BY SHEPARD, SKATEBOARDER BLAIZE BLOUIN, AND DESIGNER AND DJ ALFRED HAWKINS AS A WAY TO INTRODUCE SKATEBOARD CULTURE AND DESIGN TO THE ART WORLD. ESTABLISHED ON THE EAST COAST BUT EVENTUALLY SETTLING IN LA, SUBLIMINAL PROJECTS REMAINS A SPACE THAT CHAMPIONS EMERGING ARTISTS.

1996

EAST TO WEST – SHEPARD FAIREY CLOSES SCREEN PRINTING SHOP IN PROVIDENCE, RHODE ISLAND, AND MOVES TO SAN DIEGO, CALIFORNIA TO PURSUE GRAPHIC DESIGN AND ART.

1998

BURGEONING GALLERY CAREER - SHEPARD'S WORK BEGINS TO RECEIVE RECOGNITION ON LARGER SCALE. STREET ART BEGINS TO BUILD RELEVANCE AMONGST FANS AND COLLECTORS, OPENING UP AVENUES IN FINE ART GALLERIES AND OTHER OUTLETS.

2000

OBEY CLOTHING - MAKING OBEY T-SHIRTS THROUGHOUT HIS CAREER, SHEPARD PARTNERS TO EXPAND THE REACH OF HIS IMAGES ON CLOTHING. AS A POPULIST IN NATURE, THE IDEA TO SPREAD HIS MESSAGE FURTHER THROUGH A NEW MEDIUM IS LAUNCHED.

2003

STUDIO NUMBER ONE IS FOUNDED BY SHEPARD AND AMANDA FAIREY – DEEPLY EMBEDDED WITH FAIREY'S DNA, STUDIO NUMBER ONE DESIGN STUDIO CHALLENGES HOW PEOPLE THINK ABOUT THEIR SURROUNDINGS THROUGH BOLD MARKETING AND ADVERTISING

2004

SWINDLE MAGAZINE - PARTNERING WITH ROGER GASTMAN, THE MAGAZINE FEATURED POP CULTURE AND LIFESTYLE CONTENT AROUND MUSIC, FASHION, AND THE ARTS. COVERS INCLUDED THE LIKES OF HENRY ROLLINS, BANKSY, TWIST, AND MORE.

2006

SUPPLY & DEMAND: THE ART OF SHEPARD FAIREY IS PUBLISHED, A RETROSPECTIVE LOOK AT SHEPARD'S CAREER TO THAT POINT. IN ITS THIRD PRINTING, THE BOOK COVERS HIS WORK TO DATE IN ADDITION TO ESSAYS AND COMMENTARY FROM FAIREY'S CONTEMPORARIES AND THOSE AROUND IN THE EARLY YEARS.



2007

OBEY AWARENESS - OBEY CLOTHING LAUNCHES THE AWARENESS CAMPAIGN SUPPORTING NON-PROFITS THROUGH THE PRODUCTION OF T-SHIRTS AND DONATION OF FUNDS TO ORGANIZATIONS THAT FIT THE IDEALS AND MESSAGING OF THE BRAND.

2008

HOPE POSTER - MOTIVATED BY HIS OWN CIVIC RESPONSIBILITY, SHEPARD USES HIS SKILLS TO CREATE A POSTER ILLUSTRATION OF THEN-PRESIDENTIAL CANDIDATE BARACK OBAMA WITH THE WORD HOPE UNDERNEATH. THE IMAGE BECOMES THE PREDOMINATELY RECOGNIZED IMAGE OF THE CAMPAIGN, EVENTUALLY BEING INDUCTED INTO THE NATIONAL PORTRAIT GALLERY IN WASHINGTON.

2010

MAYDAY - THE FINAL GALLERY SHOW AT DEITCH PROJECTS IN LOWER MANHATTAN, MAYDAY WAS AN EXHIBITION OF PRIMARILY PORTRAITS OF REVOLUTIONARIES IN THE WAY OF ARTISTS, MUSICIANS, AND POLITICAL ACTIVISTS.

2010

EXIT THROUGH THE GIFTSHOP - SHEPARD IS HEAVILY FEATURED IN THE DOCUMENTARY BY HIS FRIEND, RENOWNED STREET ARTIST, BANKSY. THE FILM ANCHORS STREET ART IN THE CULTURE OF THE DAY.

2015

OBEY CLOTHING IDEALS - WANTING TO IMPROVE ITS OVERSIGHT IN SOURCING AND MANUFACTURING, OBEY CLOTHING STARTS WORKING WITH FAIR TRADE IN ADDITION TO RESOURCING MORE ORGANIC, RECYCLED AND SUSTAINABLE PRODUCT THROUGH MATERIALS AND TRANSPORT. AS AN ONGOING MISSION TO IMPROVE, IDEALS IS AN OPEN-ENDED PROJECT THAT EVOLVES AS NEW OPPORTUNITIES BECOME AVAILABLE. (2021 GOTS CERTIFICATION).

2017

WE THE PEOPLE, WOMEN'S MARCH - IN COLLABORATION WITH AMPLIFIER, SHEPARD CREATES ICONIC PROTEST ART WITH MESSAGES INCLUDING "DEFEND DIGNITY," "GREATER THAN FEAR," AND "PROTECT EACH OTHER" CELEBRATING AND LIFTING UP MARGINALIZED PEOPLE.

OBEY GIANT DOCUMENTARY - HULU RELEASES A DOCUMENTARY FILM, OBEY GIANT: THE ART AND DISSENT OF SHEPARD FAIREY ON THE LIFE AND CAREER OF SHEPARD, SPANNING THE NEARLY 30 YEARS OF HIS CAREER.

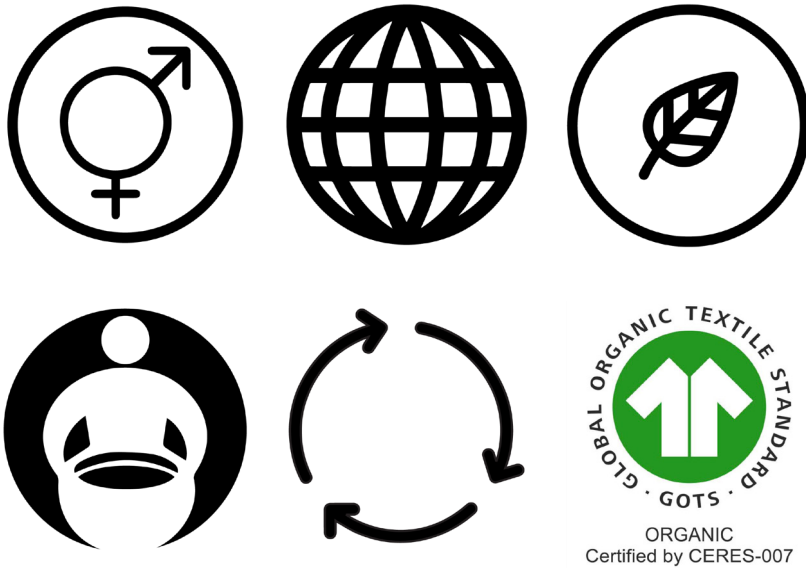
DAMAGED - IN CONJUNCTION WITH LIBRARY STREET COLLECTIVE, THE DAMAGED EXHIBITION LAUNCHES IN LA. THE SHOW FOCUSES PRIMARILY ON CRITICAL ISSUES IN SOCIETY. AS SHEPARD STATES, "DAMAGED IS AN HONEST DIAGNOSIS, BUT DIAGNOSIS IS THE FIRST STEP TO RECOGNIZING AND SOLVING PROBLEMS."

2019

FACING THE GIANT - 3 DECADES OF DISSENT CELEBRATES 30 YEARS OF OBEY. THE SHOW HIGHLIGHTS A NUMBER OF DISTINCT WORKS FROM EACH OF THE 3 DECADES OF SHEPARD'S OBEY ART CAMPAIGN REPURPOSED OR OFFERED IN A NEW FORMAT.

100TH MURAL - SHEPARD COMPLETES HIS 100TH MURAL IN PROVIDENCE, RHODE ISLAND. CREATIVITY, EQUALITY, JUSTICE IS COMPLETED WITH SUPPORT AND INSPIRATION FROM NON-PROFIT ARTIST SPACE AS220.

LEGEND



UNISEX

THIS ICON INDICATES THAT THIS GARMENT IS UNISEX.

SUSTAINABLE

THIS ICON INDICATES THAT THIS GARMENT IS CONSTRUCTED SUSTAINABLY. MORE THAN JUST SUSTAINABLE RAW MATERIALS, WE CONSIDER THE SOCIAL ENVIRONMENT, AND ECONOMIC IMPACT OF ITS PRODUCTION.

ORGANIC COTTON

THIS ICON INDICATES THAT THIS GARMENT IS CONSTRUCTED WITH ORGANIC COTTON. CERTIFIED ORGANIC COTTON FOLLOWING STRICT REGULATIONS WITHOUT THE USE OF GMO'S HARMFUL PESTICIDES, OR SYNTHETIC FERTILIZERS.

FAIR TRADE

FAIR TRADE USA'S FAIR TRADE CERTIFIED™ LABEL EMPOWERS YOU, THE CONSUMER, WITH THE KNOWLEDGE THAT YOUR PURCHASE HAS A POSITIVE IMPACT ON THE PEOPLE WHO SEW AND GROW THE PRODUCTS YOU LOVE.

FOR EVERY OBEY FAIR TRADE CERTIFIED™ PRODUCT SOLD, A PERCENTAGE IS PAID DIRECTLY TO A SPECIAL FUND FOR THE WORKERS THAT CREATE OUR GOODS. THEY DECIDE COLLECTIVELY HOW TO SPEND THESE FUNDS BASED ON THEIR COMMUNITIES GREATEST NEEDS: FROM SCHOLARSHIPS, SCHOOL BUSES, TO MEDICAL CARE, DISASTER AND RELIEF SERVICES.

RECYCLED MATERIAL

THIS ICON INDICATES THAT THIS GARMENT IS CONSTRUCTED WITH RECYCLED MATERIALS. PER T-SHIRT, 1.6 RECYCLED PLASTIC BOTTLES AND .10LBS OF RECYCLED COTTON ARE USED.

REDUCE, REUSE, RECYCLE!

GOTS CERTIFIED

THIS ICON INDICATES THAT THIS GARMENT IS GOTS CERTIFIED. THIS PRODUCT IS SUSTAINABLY SOURCED FROM SEED TO FINISHED PRODUCT, THROUGH ENVIRONMENTALLY AND SOCIALLY RESPONSIBLE MANUFACTURING, AND IS CERTIFIED BY GLOBAL ORGANIC TEXTILE STANDARD.



281210116 | ANGELICA BANDANA SHIRT



ADVENTURINE
GREEN MULTI

PRINTED POPLIN SHORT SLEEVE SHIRT

- CASUAL BUTTON-UP SHIRT
 - CONTRAST CONVERTIBLE COLLAR
 - SINGLE CHEST POCKET WITH SOLID TRIM AT HEM
 - PEARLIZED BUTTONS
 - OBEY SIDE SEAM FLAG LABEL
- 100% COTTON
 - 4.5 OZ
 - IMPORTED
- REGULAR FIT

XS S M L XL



271210103 | ANGELICA BANDANA SHORT



ADVENTURINE
GREEN MULTI

PRINTED POPLIN CASUAL SHORT

- ELASTIC WAIST WITH SELF TIE
 - FRONT SLASH POCKET OPENINGS AT SIDES
 - OBEY STRIP LABEL BELOW ELASTIC BACK WAIST
- 100% COTTON
 - 4.5 OZ
 - IMPORTED
- 17.75" LEG OPENING
 - REGULAR FIT

XS S M L XL



281210118 | ATOLL SHIRT



BLUE MULTI

PRINTED VISCOSE SHORT SLEEVE SHIRT

- RESORT STYLE BUTTON-UP SHIRT
- CONVERTIBLE CAMP COLLAR
- SINGLE CHEST POCKET
- PEARLIZED BUTTONS
- OBEY SIDE SEAM FLAG LABEL

- 100% VISCOSE
- 4 OZ
- IMPORTED

- REGULAR FIT

XS S M L XL



272120104 | ATOLL SHORT



BLUE MULTI

PRINTED VISCOSE CASUAL SHORT

- ELASTIC WAIST WITH SELF TIE
- FRONT SLASH POCKET OPENINGS AT SIDES
- OBEY SIDE SEAM FLAG LABEL

- 100% VISCOSE
- 4 OZ
- IMPORTED

- REGULAR FIT

XS S M L XL



281210115 | DOMINIQUE STRIPE SHIRT



CORONET BLUE
MULTI

STRIPE POPLIN SHORT SLEEVE SHIRT

- CASUAL BUTTON-UP SHIRT
- CONVERTIBLE COLLAR
- DOUBLE CHEST POCKETS
- PEARLIZED BUTTONS
- OBEY SIDE SEAM FLAG LABEL.
- 100% COTTON
- 4 OZ
- IMPORTED
- REGULAR FIT

XS S M L XL



242000122 | DOMINIQUE STRIPE PANT



CORONET BLUE
MULTI

STRIPE POPLIN RELAXED PANT

- ELASTIC WAIST WITH SELF TIE
- FRONT SLASH POCKET OPENINGS AT SIDES
- DOUBLE PATCH POCKETS AT BACK
- OBEY STRIP LABEL AT BACK POCKET OPENING
- 100% COTTON
- 4 OZ
- IMPORTED
- BAGGY FIT

XS S M L XL



284050028 | PAISLEY WORKS TANK TOP



MAZARINE BLUE
MULTI

PRINTED VISCOSE SPAGHETTI TOP

- FRONT V-NECK LINE WITH BACK SMOCKING
- SPAGHETTI STRAP IS ADJUSTABLE
- OBEY LABEL AT CENTER BACK NECKLINE

- 100% VISCOSE
- 4 OZ
- IMPORTED

- FITTED TOP

XS S M L XL



242000123 | PAISLEY WORKS PANT



MAZARINE BLUE
MULTI

PRINTED VISCOSE PANT

- ELASTIC WAIST WITH SELF TIE
- FRONT SLASH POCKET OPENINGS AT SIDES
- DOUBLE PATCH POCKETS AT BACK
- OBEY STRIP LABEL AT BACK POCKET OPENING

- 100% VISCOSE
- 4 OZ
- IMPORTED

- 18" LEG OPENING
- RELAXED FIT

XS S M L XL





401500422 | OBEY RIB KNIT DRESS



SURF SPRAY

RIB KNIT SLEEVELESS DRESS

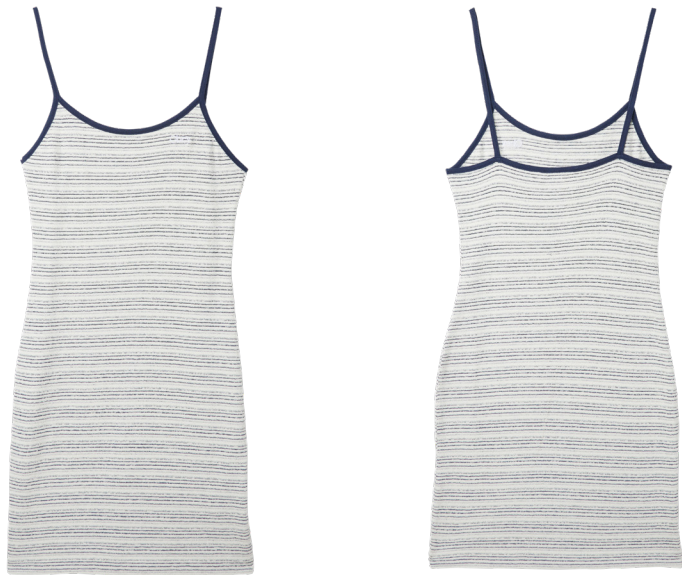
- RIB NECKLINE AND ARMHOLE
- CONTOUR BODY SHAPE
- OBEY TONAL EMBROIDERY AT FRONT CHEST.
- OBEY SIDE SEAM FLAG LABEL
- 95% COTTON 5% SPANDEX
- 9.5 OZ
- IMPORTED
- CONTOUR FIT

XS S M L XL



ANTHRACITE

401500417 | LICENSE JERSEY DRESS



UNBLEACHED MULTI

STRIPE SPAGHETTI MIDI DRESS

- JERSEY STRIPE FABRICATION
- CONTOUR BODY SHAPE
- SOLID RIB AT SPAGHETTI STRAP, NECKLINE AND ARMHOLE
- OBEY EMBROIDERY AT SIDE CHEST
- 100% COTTON
- 7 OZ
- IMPORTED
- CONTOUR FIT

XS S M L XL



401500420 | REQUIEM SLIP DRESS



PRINTED VISCOSE SLIP DRESS

- FRONT V-NECK LINE
- ADJUSTABLE BACK CRISSCROSS SPAGHETTI STRAP
- BIAS CUT BODY
- OBEY STRIP LABEL AT BACK NECKLINE

- 100% VISCOSE
- 4 OZ
- IMPORTED

- REGULAR FIT

XS S M L XL



STRONG BLUE MULTI

401500416 | HOBART SLIP DRESS



PRINTED VISCOSE SLIP DRESS

- FRONT V-NECK LINE
- SPAGHETTI STRAP IS ADJUSTABLE
- OBEY STRIP LABEL AT BACK NECKLINE

- 100% VISCOSE
- 4 OZ
- IMPORTED

- REGULAR FIT

XS S M L XL



ORCHID PETAL MULTI

401500419 | PAPER CUTS WRAP DRESS



MOSS GREEN MULTI



PRINTED VISCOSE MIDI WRAP DRESS

- FRONT V-NECK SELF TIE WRAP AT SIDE
- SHORT CAP SLEEVES
- OBEY STRIP LABEL AT BACK NECKLINE

- 100% VISCOSE
- 4 OZ
- IMPORTED

- REGULAR FIT

XS S M L XL



NIMBUS CLOUD
MULTI

401500418 | MALICE DRESS



UNBLEACHED MULTI



PRINTED VISCOSE SHORT SLEEVE DRESS

- FRONT V-NECK BUTTON FRONT DRESS
- LOGO PEARLIZED BUTTONS
- OBEY STRIP LABEL AT BACK NECKLINE

- 100% VISCOSE
- 4 OZ
- IMPORTED

- REGULAR FIT

XS S M L XL





234050147 | THOMSON CROPPED TANK



DARK BROWN MULTI

- RIB TANK
- 2 TONS 1X1 RIB FABRICATION
 - BOUNDED NECKBAND AND ARMHOLES
 - OBEY LABEL AT BACK NECK
 - 100% COTTON
 - 9.5 OZ
 - IMPORTED
 - SLIM AND CROPPED FIT

XS S M L XL



HYDRANGEA MULTI

234050146 | JULIAN TANK



PIRATE BLACK

- RIB TANK
- 2 TONS 1X1 RIBFABRICATION
 - BOUNDED NECKBAND AND ARMHOLES
 - OBEY LABEL AT BACK NECK
 - 95% COTTON 5% SPANDEX
 - 9.5 OZ
 - IMPORTED
 - SLIM FIT

XS S M L XL



UNBLEACHED

231080154 | EDEN CROPPED TEE SS



ORCHID PETAL
MULTI

YARN DYE JACQUARD KNIT POLO SHIRT

- JACQUARD JERSEY FABRICATION
- RIB NECKBAND
- OBEY EMBROIDERY ON CHEST

- 100% COTTON
- IMPORTED

- LOOSE FIT

XS S M L XL



PIRATE BLACK
MULTI

231080155 | PENNY RINGER TEE SS



WHITE

RIINGER SHORT SLEEVE TEE

- CONTRAST RIB NECKBAND AND CUFFS
- OBEY EMBROIDERY ON CHEST

- 100% COTTON
- IMPORTED

- RELAXED FIT

XS S M L XL



ORCHID PETAL

231090007 | LOREN POLO SS



EVENING PRIMROSE

- RIBBED SHORT SLEEVE POLO
- 2X1 RIB FABRICATION
 - LETTUCE EDGE AT SLEEVE, COLLAR AND HEM
 - PEARLIZED BUTTON FRONT PLACKET
 - OBEY TONAL CHEST EMBROIDERY
- 95% COTTON 5% SPANDEX
 - 9.5 OZ
 - IMPORTED
- SLIM FIT

XS S M L XL



UNBLEACHED

231080157 | SOPHIE FRONT TIE SS



HYDRANGEA

- RIBBED FRONT TIES SHORT SLEEVE TEE
- 2X1 RIB FABRICATION
 - FRONT TIES CLOSURE
 - OBEY TONAL CHEST EMBROIDERY
- 95% COTTON 5% SPANDEX
 - 9.5 OZ
 - IMPORTED
- SLIM FIT

XS S M L XL



CLASSIC GREEN

DENIM COLLECTION

THE OBEY DENIM COLLECTION REPRESENTS A DIVERSE GROUPING OF OBEY DENIM BOTTOMS, JACKETS, AND SHIRTS IN A VARIETY OF FITS AND SHAPES. WE BELIEVE THAT OBEY DENIM AND THE DIVERSITY IN OUR DENIM SHILLOUTTES IS MEANT AS A VEHICLE FOR YOUR OWN PERSONAL STYLE AND MENS SELF EXPRESSION. THE BEAUTY OF DENIM IS HOW IT WEARS AND CHANGES OVER TIME TO CREATE ITS OWN KIND OF CHARACTERISTICS JUST LIKE YOU.

THE MEDIUM IS THE MESSAGE.

221160037 | REBUILT SHIRT JACKET



CLAY

DECONSTRUCTED STYLE LINE DENIM SHIRT JACKET

- CENTER FRONT LOGO SHANK BUTTON CLOSURE
- CHEST PATCH POCKET WITH BUTTON FLAP CLOSURE
- SIDE SEAM POCKET ENTRIES
- DOUBLE LOGO SHANK BUTTONS AT CUFFS
- OBEY ART LABEL AT CHEST POCKET
- OBEY SIDE SEAM FLAG LABEL

- 100% COTTON
- 13.5 OZ
- IMPORTED

- REGULAR FIT

XS S M L XL



LIGHT INDIGO

221800416 | NESSA BLOUSON JACKET



LIGHT INDIGO

DENIM BLOUSON JACKET

- CENTER FRONT LOGO ZIPPER CLOSURE
- CHEST WELT POCKET ZIPPER CLOSURE
- SIDE BOTTOM WELT POCKET ENTRIES
- DOUBLE LOGO SHANK BUTTONS AT CUFFS
- OBEY ART LABEL AT CHEST
- OBEY SIDE SEAM FLAG LABEL

- 100% COTTON
- 13.5 OZ
- IMPORTED

- REGULAR FIT

XS S M L XL

284050026 | OBEY CROPPED OVERALL TOP



LIGHT INDIGO

- CROPPED OVERALL DENIM TOP
- ADJUSTABLE STRAP WITH METAL CLASP TO HOOK ON BIB
 - LARGE PATCH POCKET AT FRONT
 - LOGO SHANK BUTTONS AT TOP AND SIDES FOR CLOSURES
 - OBEY ART LABEL AT BOTTOM CORNER
- 100% COTTON
- 13.5 OZ
- IMPORTED
- CROPPED FIT
- XS S M L XL

411550110 | REBUILT CARPENTER SKIRT



CLAY

- DECONSTRUCTED STYLE LINE DENIM SKIRT
- CARPENTER STYLE INSPIRED MINI SKIRT
 - LOGO SHANK BUTTON CLOSURE AT WAISTBAND
 - FRONT SLASH POCKET ENTRY AT SIDES
 - CARPENTER PATCH POCKET AT SIDE SEAM
 - DOUBLE PATCH POCKETS AT BACK
 - OBEY ART LABEL AT BACK POCKET
- 100% COTTON
- 13.5 OZ
- IMPORTED
- REGULAR FIT
- 24 25 26 27 28 29 30 31 32



LIGHT INDIGO

411550111 | PAINTER'S MIDI SKIRT



LIGHT INDIGO

DENIM MIDI SKIRT

- PAINTER'S STYLE INSPIRED MIDI LENGTH SKIRT
- LOGO SHANK BUTTON CLOSURE AT WAISTBAND
- FRONT SLASH POCKET ENTRY AT SIDES
- DOUBLE KNEE PATCH AT FRONT
- PATCH POCKETS AT SIDES
- DOUBLE PATCH POCKETS AT BACK
- OBEY ART LABEL AT BACK POCKET

- 100% COTTON
- 13.5 OZ
- IMPORTED

- REGULAR FIT

24 25 26 27 28 29 30 31 32



UNBLEACHED

272100052 | DANIA SHORT



UNBLEACHED

DENIM SHORT

- SHANK BUTTON CLOSURE
- ZIPPER FLY
- SLASH FRONT POCKETS
- PATCH BACK POCKETS
- OBEY LABEL AT BACK POCKET

- 100% COTTON
- 13.5 OZ
- IMPORTED

- 3" INSEAM
- REGULAR FIT

24 25 26 27 28 29 30 31 32



LIGHT INDIGO

272100053 | ELI PLEATED SHORT



FADED BLACK

DENIM SHORT

- SHANK BUTTON CLOSURE
- ZIPPER FLY
- SLASH FRONT POCKETS
- WELTS BACK POCKETS
- FRONT PLEATS
- OBEY LABEL ABOVE WELT BACK POCKET

- 100% COTTON
- 13.5 OZ
- IMPORTED

- 8.25" INSEAM
- REGULAR FIT

24 25 26 27 28 29 30 31 32



LIGHT INDIGO

242010051 | OBEY EFFORTLESS DENIM



LIGHT INDIGO

DENIM PANT

- DENIM FABRICATION
- 5 POCKETS STYLING
- SHANK BUTTON CLOSURE
- BUTTON FLY
- OBEY EYES LABELING AT BACK POCKET

- 100% COTTON
- 13.5 OZ
- IMPORTED

- 13.375" LEG OPENING
- REGULAR FIT

24 25 26 27 28 29 30 31 32



FADED BLACK



LIGHT INDIGO

DENIM PANT

- DENIM FABRICATION
 - HALF BACK ELASTIC WAIST
 - SHANK BUTTON CLOSURE
 - ZIPPER FLY
 - SLASH FRONT POCKETS
 - PATCH BACK POCKETS
 - CARPENTER POCKETS
 - OBEY EYES LABELING AT BACK POCKET
-
- 100% COTTON
 - 13.5 OZ
 - IMPORTED
-
- 19" LEG OPENING
 - REGULAR FIT

24 25 26 27 28 29 30 31 32



UNBLEACHED



242020105 | DAILY PANT



PASTEL LAVENDER

HARDWORK PANT

- TWILL FABRICATION
- HOOK AND EYE CLOSURE
- ZIPPER FLY
- WELT BACK POCKETS
- OBEY EYES LABELING ABOVE BACK WELT POCKET
- 60% COTTON 39% POLYESTER 1% SPANDEX
- 10.5 OZ
- IMPORTED
- 18" LEG OPENING
- REGULAR FIT

24 25 26 27 28 29 30 31 32



BLACK

CLAY

242020087 | BRIGHTON CARPENTER PANT



HYDRANGEA

BRIGHTON CARPENTER PANT

- TWILL FABRICATION
- SHANK BUTTON CLOSURE
- ZIPPER FLY
- HALF BACK ELASTIC WAIST
- 5 POCKETS STYLING
- CARPENTER POCKETS
- OBEY EYES LABELING AT BACK POCKET
- 100% COTTON
- 12 OZ
- IMPORTED
- 17.75" LEG OPENING
- REGULAR FIT

24 25 26 27 28 29 30 31 32



BLACK

UNBLEACHED

242020093 | MILA WORK PANT



SILVER GREY

WORK PANT

- TWILL WORK PANT
- HOOK AND EYE CLOSURE
- ZIPPER FLY
- WELT BACK POCKETS
- CUFFS AT BOTTOM LEG
- OBEY EYES LABELING ABOVE BACK WELT POCKET

- 100% COTTON
- 10 OZ
- IMPORTED

- 23" LEG OPENING
- REGULAR FIT

24 25 26 27 28 29 30 31 32



JAVA BROWN

242020108 | OBEY EUGENE UTILITY PANT



MOSS GREEN

UTILITY PANT

- CANVAS FABRICATION
- HALF BACK ELASTIC WAIST
- SHANK BUTTON CLOSURE
- ZIPPER FLY
- PATCH FRONT POCKETS
- PATCH BACK POCKETS
- OBEY EMBROIDERY AT BACK POCKET

- 100% COTTON
- 9.5 OZ
- IMPORTED

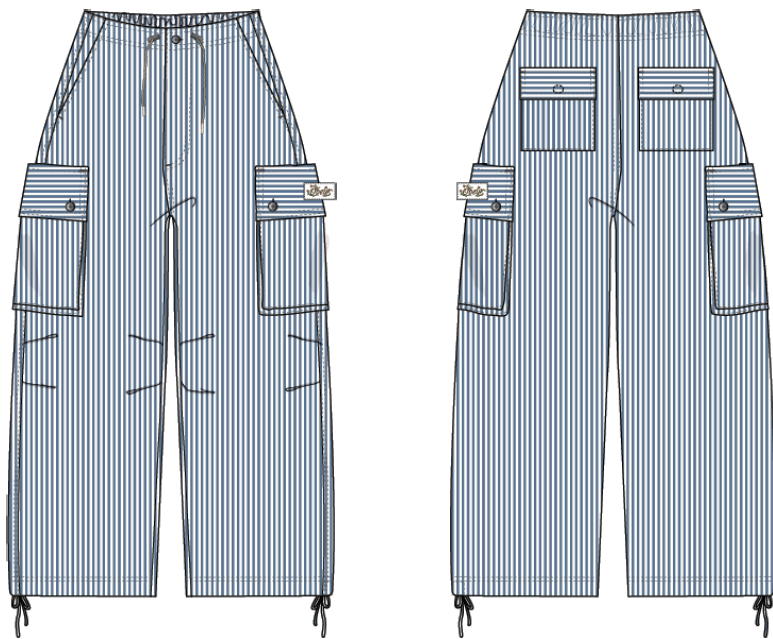
- 19" LEG OPENING
- REGULAR FIT

24 25 26 27 28 29 30 31 32



UNBLEACHED

242000119 | OBEY SHAY CARGO PANT



BLUE MULTI

SHAY CARGO PANT

- COTTON PIN STRIPE SEERSUCKER FABRICATION
- BUTTON CLOSURE
- ZIPPER FLY
- ROUNDED DRAWCORD AT WAIST WITH TOGGLES
- SLASH FRONT POCKETS
- SIDE CARGO POCKETS
- BACK PATCH POCKETS WITH FLAPS
- ROUNDED DRAWCORD AT HEM
- KNEE PLEATS
- OBEY LABEL AT CARGO FLAP
- 100% COTTON
- 5.25 OZ
- IMPORTED
- 18" LEG OPENING
- BAGGY FIT

24 25 26 27 28 29 30 31 32

242020107 | DALIA PIGMENT DYED PANT



SILVER GREY

DALIA PIGMENT PANT

- POPLIN FABRICATION
- PIGMENT DYED TREATMENT
- HALF BACK ELASTIC WAIST
- BUTTON CLOSURE
- ZIPPER FLY
- SLASH FRONT POCKETS
- PATCH BACK POCKETS
- KNEE PANELS
- OBEY EYES LABELING AT BACK POCKET
- 100% COTTON
- 4.5 OZ
- IMPORTED
- 19" LEG OPENING
- RELAXED FIT

24 25 26 27 28 29 30 31 32



ORCHID PETAL

272100055 | MAGNIFIED FLOWER SHORT



TAN MULTI

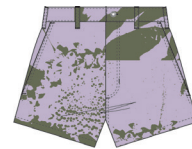
DENIM SHORT

- ALLOVER PRINT DENIM FABRICATION
- SHANK BUTTON CLOSURE
- ZIPPER FLY
- SLASH FRONT POCKETS
- PATCH BACK POCKETS
- OBEY LABEL AT BACK POCKET

- 100% COTTON
- 12.5 OZ
- IMPORTED

- 3" INSEAM
- REGULAR FIT

24 25 26 27 28 29 30 31 32



LAVENDER MULTI

411550115 | MAGNIFIED FLOWER SKIRT



BLACK MULTI

PRINTED DENIM MINI SKIRT

- LOGO SHANK BUTTON CLOSURE AT WAISTBAND
- FRONT SLASH POCKET ENTRY AT SIDES
- DOUBLE PATCH POCKETS AT BACK
- OBEY LABEL AT BACK POCKET

- 100% COTTON
- 13 OZ
- IMPORTED

- REGULAR FIT

24 25 26 27 28 29 30 31 32



YELLOW MULTI





UNBLEACHED

TWILL VARSITY JACKET

- CENTER FRONT LOGO SNAP BUTTON CLOSURE
- BOTTOM DOUBLE WELT POCKET OPENINGS
- 1 X 1 STRIPE RIB AT WAISTBAND AND CUFFS
- OBEY BOLD FONT EMBROIDERY AT CHEST
- CHENILLE ICON FACE PATCH AT BACK
- OBEY SIDE SEAM FLAG LABEL

- SHELL: 100% COTTON
- LINING: 100% COTTON
- IMPORTED

- RELAXED FIT

XS S M L XL XXL



BLACK

142010087 | BIGWIG BAGGY DENIM



LAUREL WREATH

BIGWIG DENIM

- 5 POCKETS DENIM STYLING
- SHANK BUTTON CLOSURE
- ZIPPER FLY
- EMBROIDERED COIN POCKET BRANDING
- OBEY EYES LABELING ON BACK POCKET
- 100% COTTON
- 13.5 OZ DENIM
- IMPORTED
- BAGGY FIT
- 20" LEG OPENING
- STRAIGHT LEG

26 27 28 29 30 31 32 33 34 36 38



FADED BLACK STONE WASH INDIGO LIGHT INDIGO

142010093 | BIGWIG DENIM CARPENTER PANT



LIGHT INDIGO

BIGWIG CARPENTER DENIM

- 5 POCKETS DENIM STYLING
- SHANK BUTTON CLOSURE
- ZIPPER FLY
- SLASH FRONT POCKET OPENING
- CARPENTER BACK POCKET
- HAMMER LOOP
- FRONT KNEE PANELS
- OBEY EYES LABELING ON BACK POCKET
- 100% COTTON
- 13.5 OZ DENIM
- IMPORTED
- BAGGY FIT
- 20" LEG OPENING
- STRAIGHT LEG

26 27 28 29 30 31 32 33 34 36 38



LAUREL WREATH SILVER GREY

142010094 | BIGWIG CARGO DENIM PANT



SILVER GREY

BIGWIG CARGO DENIM

- DENIM FABRICATION
 - SHANK BUTTON CLOSURE
 - ZIPPER FLY
 - 5 POCKETS STYLING
 - SIDE CARGO POCKETS WITH HIDDEN SNAPS
 - OBEY EYES LABELING ON RIGHT BACK POCKET
-
- 100% COTTON
 - 13.5 OZ DENIM
 - IMPORTED
-
- BAGGY FIT
 - 20" LEG OPENING
 - STRAIGHT LEG

26 27 28 29 30 31 32 33 34 36 38



STONE WASH LIGHT INDIGO

142020218 | BIGWIG BAGGY CORDUROY PANT

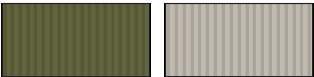


DIGITAL BLACK

BIGWIG CORDUROY PANT

- CORDUROY FABRICATION
 - 5 POCKETS STYLING
 - SHANK BUTTON CLOSURE
 - ZIPPER FLY
 - COIN POCKET WITH LOGO EMBROIDERY
 - RIVETS AT FRONT POCKETS
 - OBEY EYES LABELING ON BACK POCKET
-
- 100% COTTON
 - 13.5 OZ DENIM
 - IMPORTED
-
- BAGGY FIT
 - 20" LEG OPENING
 - STRAIGHT LEG

26 27 28 29 30 31 32 33 34 36 38



MOSS GREEN SILVER GREY

142020217 | BIGWIG BAGGY TWILL CARGO PANT



LAUREL WREATH

BIGWIG CARGO PANT

- TWILL FABRICATION
- SHANK BUTTON CLOSURE
- ZIPPER FLY
- 5 POCKETS STYLING
- SIDE CARGO POCKETS WITH HIDDEN SNAPS
- OBEY EYES LABELING ON LEFT CARGO FLAP POCKET
- 100% COTTON
- 12 OZ DENIM
- IMPORTED
- BAGGY FIT
- 20" LEG OPENING
- STRAIGHT LEG

26 27 28 29 30 31 32 33 34 36 38



BLACK SILVER GREY

142020225 | BIGWIG GIANT CHINO PANT



JAVA BROWN

BIGWIG CHINO PANT

- TWILL FABRICATION
- SHANK BUTTON CLOSURE
- ZIPPER FLY
- SLASH FRONT POCKET OPENING
- COIN POCKET
- BACK WELTS POCKETS
- OBEY EYES LABELING ABOVE RIGHT BACK POCKET
- 100% COTTON
- 12 OZ DENIM
- IMPORTED
- BAGGY FIT
- 20.5" LEG OPENING
- STRAIGHT LEG

26 27 28 29 30 31 32 33 34 36 38



WASHED BLACK CLAY MOSS GREEN

121800560 | OBEY ROSE BLOUSON JACKET



STONE WASH

DENIM VARSITY JACKET

- CENTER FRONT LOGO SNAP BUTTON CLOSURE
- BOTTOM WELT POCKET OPENINGS
- 1 X 1 CUSTOM STRIPE RIB AT WAISTBAND AND CUFFS
- OBEY LOGO EMBROIDERY AT CHEST
- OBEY "VISUAL DESIGN STUDIO" ART EMBROIDERY AT BACK
- OBEY SIDE SEAM FLAG LABEL

- SHELL: 100% COTTON
- 13.5 OZ
- LINING: 100% COTTON
- IMPORTED

- RELAXED FIT

XS S M L XL XXL



CLAY

142010080 | BENDER DENIM



FADED BLACK

BENDER DENIM

- 5 POCKET DENIM STYLING
- SHANK BUTTON CLOSURE
- BUTTON FLY
- RIVETS AT FRONT POCKETS
- COIN POCKET
- OBEY EYES LABELING ON WEARER'S RIGHT BACK POCKET
- 100% COTTON
- 13 OZ DENIM
- IMPORTED
- REGULAR FIT
- 15.5" LEG OPENING
- TAPERED LEG

26 27 28 29 30 31 32 33 34 36 38



STONE WASH LIGHT INDIGO

142010077 | HARDWORK DENIM



STONE WASH

HARDWORK PANT

- DENIM WORK PANT
- SHANK BUTTON CLOSURE
- BUTTON FLY
- 5 POCKETS DENIM STYLING
- OBEY EYES LABELING AT WEARER'S RIGHT BACK POCKET
- 100% COTTON
- 13.5 OZ DENIM
- IMPORTED
- REGULAR FIT
- 18" LEG OPENING
- STRAIGHT LEG

26 27 28 29 30 31 32 33 34 36 38



FADED BLACK LIGHT INDIGO UNBLEACHED

142010078 | HARDWORK CARPENTER



UNBLEACHED

HARDWORK CARPENTER PANT

- DENIM WORK PANT
 - SHANK BUTTON CLOSURE
 - ZIPPER FLY
 - FRONT SLASH POCKETS WITH SINGLE COIN POCKET
 - BACK PATCH POCKET
 - CARPENTER POCKETS
 - OBEY EYES LABELING ON WEARER’S RIGHT BACK POCKET
-
- 100% COTTON
 - 13 OZ DENIM
 - IMPORTED
-
- REGULAR FIT
 - 18” LEG OPENING
 - STRAIGHT LEG

26 27 28 29 30 31 32 33 34 36 38



STONE WASH



LIGHT INDIGO

142010096 | HARDWORK PRINTED DENIM



ROSIN

HARDWORK PRINTED PANT

- DENIM ALLOVER PRINTED WORK PANT
 - SHANK BUTTON CLOSURE
 - BUTTON FLY
 - 5 POCKETS DENIM STYLING
 - OBEY EYES LABELING ABOVE BACK WELT POCKET
-
- 100% COTTON
 - 13.5 OZ DENIM
 - IMPORTED
-
- REGULAR FIT
 - 18” LEG OPENING
 - STRAIGHT LEG

26 27 28 29 30 31 32 33 34 36 38



UNBLEACHED

142010082 | FUBAR PLEATED DENIM



UNBLEACHED

FUBAR DENIM PLEATED PANT

- DENIM FABRICATION
- SHANK BUTTON CLOSURE
- ZIPPER FLY
- SLASH FRONT POCKETS
- PLEATS AT FRONT WAIST
- WELTS BACK POCKETS
- OBEY EYES LABELING ABOVE RIGHT BACK POCKET

- 100% COTTON
- 13.5 OZ DENIM
- IMPORTED

- 16.75" LEG OPENING
- RELAXED TAPERED FIT

26 27 28 29 30 31 32 33 34 36 38



FADED BLACK



LIGHT INDIGO

142010079 | EASY DENIM PANT



LIGHT INDIGO

EASY DENIM PANT

- FULL ELASTIC WAISTBAND WITH ROUNDED DRAWCORD
- FAUX FLY
- SIDE SEAM FRONT SIDE POCKETS
- BACK PATCH POCKETS
- OBEY EYES LABELING AT BACK WEARER'S RIGHT POCKET

- 100% COTTON
- 13.5 OZ DENIM
- IMPORTED

- RELAXED FIT
- 18" LEG OPENING
- TAPERED LEG
-

XS S M L XL XXL



FADED BLACK



UNBLEACHED

121160054 | DIVISION SHIRT JACKET



PIGMENT FRENCH BLUE

PIGMENT DYED TWILL SHIRT JACKET

- FRONT PLACKET LOGO SHANK BUTTON CLOSURE
- FRONT CHEST PATCH POCKETS WITH SHANK FLAP CLOSURES
- BOTTOM WELT POCKET OPENINGS
- SINGLE LOGO SHANK BUTTON AT CUFFS
- OBEY SIDE SEAM FLAG LABEL

- 100% COTTON
- IMPORTED

- RELAXED FIT

XS S M L XL XXL



PIGMENT BLACK



PIGMENT SURF SPRAY

142020232 | HARDWORK PIGMENT CARPENTER PANT



PIGMENT FRENCH BLUE

HARDWORK PIGMENT PANT

- TWILL PIGMENT WORK PANT
- SHANK BUTTON CLOSURE
- ZIPPER FLY
- 5 POCKETS DENIM STYLING
- CARPENTER POCKETS
- OBEY EYES LABELING ON WEARER'S RIGHT BACK POCKET

- 100% COTTON
- 10.5 OZ DENIM
- IMPORTED

- 18" LEG OPENING
- STRAIGHT LEG

26 27 28 29 30 31 32 33 34 36 38



PIGMENT BLACK



PIGMENT SURF SPRAY

121800555 | AUSTIN UTILITY JACKET



CLAY

PIGMENT DYED UTILITY JACKET

- FRONT PLACKET FAUX HORN BUTTON CLOSURE
- ALL PLEATED PATCH POCKETS WITH BUTTON FLAP CLOSURES
- OBEY SIDE SEAM FLAG LABEL
- SHELL: 70% COTTON 30% NYLON
- LINING: 100% COTTON
- 4.5 OZ
- IMPORTED
- OVERSIZED FIT

XS S M L XL XXL



LAUREL WREATH

142010095 | HARDWORK PIGMENT DENIM



PIGMENT LAUREL WREATH

HARDWORK DENIM PIGMENT PANT

- DENIM PIGMENT WORK PANT
- SHANK BUTTON CLOSURE
- BUTTON FLY
- 5 POCKETS DENIM STYLING
- RIVETS AT FRONT POCKETS
- OBEY EYES LABELING ON WEARER'S RIGHT BACK POCKET
- 100% COTTON
- 13.5 OZ DENIM
- IMPORTED
- REGULAR FIT
- 18" LEG OPENING
- STRAIGHT LEG

26 27 28 29 30 31 32 33 34 36 38



PIGMENT ORCHID
PETAL



PIGMENT SILVER
GREY

112470194 | LOWERCASE PIGMENT HOOD



PIGMENT DIGITAL
BLACK

EXTRA HEAVYWEIGHT PIGMENT DYED HOODED SWEATSHIRT

- BRUSHED BACK FLEECE
- RIB KNIT CUFFS AND COLLAR
- FRONT POCKET
- OBEY LOWERCASE LOGO EMBROIDERY AT LEFT CHEST

- 100% COTTON
- 16 OZ
- IMPORTED

- RELAXED FIT

XS S M L XL XXL



PIGMENT
HYDRANGEA



PIGMENT SHELL
PINK



PIGMENT CLAY

112460019 | LOWERCASE PIGMENT ZIP HOOD



PIGMENT CORONET
BLUE

EXTRA HEAVYWEIGHT PIGMENT DYED ZIP HOODED SWEATSHIRT

- BRUSHED BACK FLEECE
- RIB KNIT CUFFS AND COLLAR
- FRONT METAL ZIPPER WITH LOGO PULL
- FRONT POCKET
- OBEY LOWERCASE LOGO EMBROIDERY AT LEFT CHEST

- 100% COTTON
- 16 OZ
- IMPORTED

- RELAXED FIT

XS S M L XL XXL



PIGMENT DIGITAL
BLACK



PIGMENT CLAY

112480138 | LOWERCASE PIGMENT CREW



EXTRA HEAVYWEIGHT PIGMENT DYED CREW FLEECE

- OBEY LOWERCASE EMBROIDERY AT LEFT CHEST
- PREMIUM HEAVYWEIGHT FABRIC
- RIB KNIT NECKBAND, CUFFS AND HEM

- 100% COTTON
- 18 OZ
- IMPORTED

- RELAXED FIT

XS S M L XL XXL



PIGMENT
CORONET BLUE

PIGMENT SHELL
PINK

PIGMENT CLAY

142030046 | LOWERCASE PIGMENT SWEATPANT



EXTRA HEAVYWEIGHT FLEECE SWEATPANT

- BRUSHED BACK FLEECE
- ELASTIC WAISTBAND AND HEMS
- SINGLE WEARER'S RIGHT BACK POCKET
- INNER WAIST ROUNDED DRAWCORD
- OBEY LOWERCASE LABEL BACK POCKET

- 100% COTTON
- 14 OZ
- IMPORTED

- RELAXED FIT

XS S M L XL XXL



PIGMENT DIGITAL
BLACK



PIGMENT CLAY



PIGMENT SHELL
PINK

PIGMENT HYDRANGEA

111620088 | LOWERCASE PIGMENT POLO



PIGMENT PEACH
PARFAIT

EXTRA HEAVYWEIGHT PIGMENT DYED FRENCH TERRY POLO

- BUTTON PLACKET CLOSURE
- RIB KNIT CUFFS AND COLLAR
- SIDE VENTS AT HEM
- OBEY LOWERCASE LOGO EMBROIDERY AT LEFT CHEST

- 100% COTTON
- 16 OZ
- IMPORTED

- RELAXED FIT

XS S M L XL XXL



PIGMENT
CORONET BLUE



PIGMENT CLAY

131080353 | LOWERCASE PIGMENT TEE SS



PIGMENT DIGITAL
BLACK

PIGMENT JERSEY SHORT SLEEVE TEE

- PIGMENT GARMENT DYED TEE
- RIB NECKBAND
- OBEY LOWERCASE EMBROIDERY AT CHEST

- 100% COTTON
- 7.5 OZ
- IMPORTED

- REGULAR FIT

XS S M L XL XXL



PIGMENT
HYDRANGAEA



PIGMENT SHELL
PINK



PIGMENT CLAY

112470211 | PIGMENT COLLEGIATE EXTRA HEAVY HOOD



PIGMENT CORONET
BLUE

EXTRA HEAVYWEIGHT PIGMENT DYED FRENCH TERRY HOOD

- EMBROIDERED TONAL GRAPHIC AT CHEST
- NO HOOD DRAWCORD
- RIB KNIT CUFFS AND HEM

- 80% COTTON 20% POLYESTER
- 16 OZ
- IMPORTED

- RELAXED FIT

XS S M L XL XXL



PIGMENT PIRATE
BLACK



PIGMENT
DEWBERRY

112470212 | PIGMENT OBEY EYES ICON EXTRA HEAVY HOOD



PIGMENT PIRATE BLACK

EXTRA HEAVYWEIGHT PIGMENT DYED FRENCH TERRY HOODED

- SCREEN PRINT GRAPHIC AT CHEST AND BACK
- NO HOOD DRAWCORD
- RIB KNIT CUFFS AND HEM

- 80% COTTON 20% POLYESTER
- 16 OZ
- IMPORTED

- RELAXED FIT

XS S M L XL XXL



PIGMENT
HYDRANGEA



PIGMENT SHELL
PINK

112480146 | PIGMENT COLLEGIATE EXTRA HEAVY CREW



PIGMENT PINK SHELL

EXTRA HEAVYWEIGHT PIGMENT DYED FRENCH TERRY CREW

- EMBROIDERED TONAL GRAPHIC AT CHEST
- RIB KNIT CUFFS AND HEM

- 80% COTTON 20% POLYESTER
- 16 OZ
- IMPORTED

- RELAXED FIT

XS S M L XL XXL



PIGMENT PIRATE
BLACK



PIGMENT
HYDRANGEA

112480147 | PIGMENT OBEY EYES ICON EXTRA HEAVY CREW



PIGMENT PIRATE BLACK

HEAVYWEIGHT PIGMENT DYED FRENCH TERRY CREW

- SCREEN PRINT GRAPHIC AT CHEST AND BACK
- RIB KNIT CUFFS AND HEM

- 80% COTTON 20% POLYESTER
- 16 OZ
- IMPORTED

- RELAXED FIT

XS S M L XL XXL



PIGMENT
DEWBERRY



PIGMENT PEACH
PARFAIT

142020184 | HARDWORK CARPENTER PANT



FLORAL MULTI

HARDWORK CARPENTER PANT

- TWILL WORK PANT
- SHANK BUTTON CLOSURE
- ZIPPER FLY
- 5 POCKETS STYLING
- CARPENTER POCKETS
- OBEY EYES LABELING AT WEARER'S RIGHT BACK POCKET

- 100% COTTON
- 12 OZ
- IMPORTED

- REGULAR FIT
- 18" LEG OPENING
- STRAIGHT LEG

26 27 28 29 30 31 32 33 34 36 38



BLACK

ARMY

UNBLEACHED

142020229 | HARDWORK RIPSTOP CARGO PANT



LIGHT ARMY

HARDWORK RIPSTOP PANT

- RIPSTOP FABRICATION
- BUTTON CLOSURE
- ZIPPER FLY
- 5 POCKETS STYLING
- SIDE CARGO POCKET.
- FLAP BACK POCKETS WITH HIDDEN SNAPS
- SIDE WAIST ADJUSTER TAB
- OBEY EYES LABELING ON WEARER'S LEFT CARGO POCKET

- 100% COTTON
- 7 OZ
- IMPORTED

- REGULAR FIT
- 18" LEG OPENING
- STRAIGHT LEG

26 27 28 29 30 31 32 33 34 36 38



BLACK

SILVER GREY

142020211 | BIG TIMER TWILL DOUBLE KNEE CARPENTER PANT



UNBLEACHED

BIG TIMER CARPENTER PANT

- TWILL FABRICATION
 - 5 POCKETS STYLING
 - SHANK BUTTON CLOSURE
 - ZIPPER FLY
 - SLASH FRONT POCKET OPENING
 - COIN POCKET
 - CARPENTER BACK POCKET
 - HAMMER LOOP
 - FRONT KNEE PANELS
 - OBEY EYES LABELING ON BACK POCKET
-
- 100% COTTON
 - 12 OZ
 - IMPORTED
-
- RELAXED FIT
 - 19" LEG OPENING
 - STRAIGHT LEG

26 27 28 29 30 31 32 33 34 36 38



BLACK



ORCHID PETAL

142020224 | BIG TIMER UTILITY PANT



RECON ARMY

BIG TIMER UTILITY PANT

- BUTTON CLOSURE
 - ZIPPER FLY
 - PATCHED FRONT POCKET
 - BACK PATCH POCKETS WITH FLAP
 - FLAT TAPING DRAWCORD AT WAIST
 - SIDE WAIST ADJUSTER TABS
 - OBEY EYES LABELING ABOVE RIGHT BACK POCKET FLAP
-
- 100% COTTON
 - 10 OZ
 - IMPORTED
-
- RELAXED FIT
 - 19" LEG OPENING
 - STRAIGHT LEG

26 27 28 29 30 31 32 33 34 36 38



JAVA BROWN



UNBLEACHED

142020223 | BIG TIMER CARGO PANT



LIGHT ARMY

BIG TIMER CARGO PANT

- CRISPY POPLIN
 - BUTTON CLOSURE
 - ZIPPER FLY
 - SLASH FRONT POCKET OPENING
 - CARGO SIDE POCKETS
 - BACK FLAP POCKETS
 - FRONT KNEE PLEATS
 - SIDE WAIST ADJUSTER TABS
 - OBEY EYES LABELING ON LEFT CARGO POCKET FLAP
- 100% COTTON
 - 5.5 OZ
 - IMPORTED
- RELAXED FIT
 - 19" LEG OPENING
 - STRAIGHT LEG

26 27 28 29 30 31 32 33 34 36 38



WASHED BLACK SILVER GREY

142020142 | EASY TWILL PANT

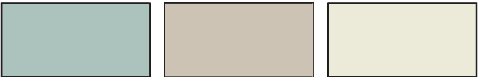


BLACK

EASY TWILL PANT

- TWILL FABRICATION
 - FULL ELASTIC WAISTBAND WITH ROUNDED DRAWCORD
 - FAUX FLY
 - SIDE SEAM FRONT SIDE POCKETS
 - BACK WELT POCKETS
 - OBEY EYES LABELING ABOVE WELT POCKET
- 100% COTTON
 - 10.5 OZ
 - IMPORTED
- RELAXED FIT
 - 18" LEG OPENING
 - TAPERED LEG

XS S M L XL XXL



SURF SPRAY IRISH CREAM UNBLEACHED

142020195 | EASY CORD PANT



ORCHID PETAL

EASY CORDUROY PANT

- CORDUROY FABRICATION
 - FULL ELASTIC WAISTBAND WITH ROUNDED DRAWCORD
 - FAUX FLY
 - SIDE SEAM FRONT SIDE POCKETS
 - BACK PATCH POCKETS
 - OBEY EYES LABELING AT BACK WEARER’S RIGHT POCKET
-
- 100% COTTON
 - 10.5 OZ
 - IMPORTED
-
- RELAXED FIT
 - 19” LEG OPENING
 - STRAIGHT LEG

XS S M L XL XXL



DIGITAL BLACK IRISH CREAM

142020196 | EASY RIPSTOP CARGO PANT



DARK BROWN

EASY RIPSTOP CARGO PANT

- RIPSTOP FABRICATION
 - FULL ELASTIC WAISTBAND WITH ROUNDED DRAWCORD
 - FAUX FLY
 - SIDE SEAM FRONT SIDE POCKETS
 - BACK PATCH POCKETS
 - OBEY EYES LABELING AT BACK WEARER’S RIGHT POCKET
-
- 100% COTTON
 - 7 OZ
 - IMPORTED
-
- RELAXED FIT
 - 19” LEG OPENING
 - STRAIGHT LEG

XS S M L XL XXL



BLACK FIELD GREEN

142020236 | GIANT PARACHUTE CARGO PANT



SILVER GREY

GIANT PARACHUTE CARGO PANT

- CRISPY POPLIN
 - HIDDEN SNAP WAIST CLOSURE
 - ZIPPER FLY
 - ELASTIC WAISTBAND WITH DRAWCORD AND CORD STOPPER
 - SIDE CARGO POCKETS
 - BACK PATCHED POCKETS WITH FLAP & HIDDEN SNAPS CLOSURE
 - DRAWCORD AT LEG OPENING
 - PLEATS AT KNEE
 - OBEY EYES LABELING ON WEARER'S LEFT CARGO FLAP
- 70% COTTON 30% NYLON
 - 4.5 OZ
 - IMPORTED
- GIANT FIT
 - 23.5" LEG OPENING
 - STRAIGHT LEG

XS S M L XL XXL



JAVA
BROWN

142020201 | FUBAR PLEATED PANT



SURF SPRAY

FUBAR PLEATED PANT

- BUTTON FRONT CLOSURE
 - ZIPPER FLY
 - SLASH FRONT POCKETS
 - PLEATS AT FRONT WAIST
 - DOUBLE WELTS BACK POCKETS
 - OBEY EYES LABELING ABOVE RIGHT BACK POCKET
- 65% COTTON 35% RAYON
 - 8 OZ
 - IMPORTED
- RELAXED FIT
 - 16.75" LEG OPENING
 - TAPERED LEG

26 27 28 29 30 31 32 33 34 36 38



BLACK



JAVA
BROWN



BLACK

FUBAR PLEATED PANT

- SEERSUCKER FABRICATION
- BUTTON FRONT CLOSURE
- ZIPPER FLY
- SLASH FRONT POCKETS
- PLEATS AT FRONT WAIST.
- WELTS BACK POCKETS
- OBEY EYES LABELING ABOVE RIGHT BACK POCKET

- 65% POLYESTER 35% COTTON
- 13.5 OZ
- IMPORTED

- RELAXED FIT
- 16.75" LEG OPENING
- TAPERED LEG

26 27 28 29 30 31 32 33 34 36 38



HYDRANGEA



100140441 | OBEY STUDIOS STRAP BACK HAT



BLACK

HIGH PROFILE ACRYLIC WOOL SURGE 6 PANEL STRAPBACK HAT

- UNSTRUCTURED
- STRAPBACK CLOSURE
- EMBROIDERED OBEY LOGO

- 100% COTTON
- IMPORTED

O/S



UNBLEACHED

200140154 | HEARTS STRAPBACK HAT



UNBLEACHED

LOW PROFILE SNAPBACK HAT

- PIGMENT TWILL
- SNAPBACK CLOSURE
- EMBROIDERED OBEY LOGO

- 100% COTTON
- IMPORTED

- ONE SIZE



BLACK

100140444 | PIGMENT BUCKET HAT



PIGMENT
HYDRANGEA

MID DEPTH TWILL BUCKET HAT

- UNSTRUCTURED
- TWILL
- EMBROIDERED OBEY ART

- 100% COTTON
- IMPORTED

O/S



PIGMENT BLACK

100140442 | JERILYN BUCKET HAT



LIGHT BLUE
MULTI



MID CROWN EYELET BUCKET HAT WITH STRAP

- UNSTRUCTURED
- EYELET FABRIC
- ADJUSTABLE CHIN STRAP WITH METAL CORD STOPPER

- 100% POLYESTER
- IMPORTED

O/S



IRISH CREAM
MULTI

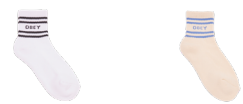
200260070 | COOP SOCK



PIQUANT GREEN /
UNBLEACHED

- MID LENGTH RIB CREW SOCKS WITH STRIPED INTARSIA OBEY ART
- OBEY STRIPE ABOVE ANKLE
 - 85% COTTON 13% NYLON 2% SPANDEX
 - IMPORTED

O/S



WHITE / BLACK

UNBLEACHED /
HYDRANGEA

200260086 | OVAL SOCK



ORCHID PETAL

- MID LENGTH RIB CREW SOCKS WITH STRIPED INTARSIA OBEY ART
- OBEY STRIPE ABOVE ANKLE
 - 85% COTTON 13% NYLON 2% SPANDEX
 - IMPORTED

O/S



AVENTURINE
GREEN

WHITE



100050026 | BIG BOY BELT



BLACK

WEB BELT WITH METAL SLIDER BUCKLE

- 1.25" WIDTH WEBBING
- METAL SLIDER BUCKLE AND TOP
- OBEY EYES LABEL
- 60% COTTON 40% POLYESTER
- IMPORTED

O/S



JAVA BROWN

HYDRANGEA

UNBLEACHED

100050036 | OBEY SNAKE DRESS BELT



TAN

FAUX SNAKE SKIN PU BELT WITH METAL BUCKLE AND TIP

- FAUX SNAKE SKIN
- 1.25" WIDTH PU
- OBEY ENGRAVED BELT LOOK
- METAL BUCKLE AND TIP
- 100% POLYURETHANE
- IMPORTED

S/ M - 41" TOTAL LENGTH INCLUDING BUCKLE *MENS SIZING*
L/ XL - 45" TOTAL LENGTH INCLUDING BUCKLE *MENS SIZING*



BLACK

100680012 | FRUITS AIR FRESHENER



WHITE MULTI

PRINTED AIR FRESHNER WITH ELASTIC STRING

- PINE SCENT
- PRINTED OBEY ART
- 100% PAPER
- IMPORTED

O/S

100680013 | PEACE DOG AIR FRESHENER



WHITE MULTI

PRINTED AIR FRESHNER WITH ELASTIC STRING

- PINE SCENT
- PRINTED OBEY ART
- 100% PAPER
- IMPORTED

O/S

100660003 | BOLD FRAME KEY CHAIN



WHITE MULTI

RUBBER KEYCHAIN

- METAL KEYRING
- PRINTED OBEY ART
- 100% RUBBER
- IMPORTED

O/S

100160021 | OBEY ICON METAL KEYCHAIN



WHITE

METAL OBEY ICON KEYCHAIN

- METAL KEYRING
- EMBOSSED WITH OBEY ICON PRINT
- 100% METAL
- IMPORTED

O/S

100040000 | OBEY ICON DRINKING GLASS



CLEAR

16OZ GLASS MUG WITH OBEY ICON PRINT

- PRINTED OBEY ICON
- 100% GLASS
- IMPORTED

O/S

100270012 | STICKER PACK 5



ASSORTED

OBEDIENT STICKER PACK

- ASSORTED STICKERS FOR THE OBEY FIENDS

O/S

100270001 | OBEY STICKER 2



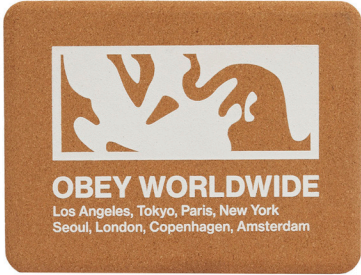
ASSORTED

OBEY STICKER PACK

- ASSORTED STICKERS FOR THE OBEY FIENDS

O/S

326003236 | OBEY WORLDWIDE ICON



OBEY P.O.P

- CORK BLOCK WITH BOLD OBEY PRINT
- 100% CORK
- IMPORTED

O/S

CORK

326003531 | OBEY LOWERCASE ICON



OBEY P.O.P

- CORK BLOCK WITH BOLD OBEY PRINT
- 100% CORK
- IMPORTED

O/S

ASSORTED

326000174 | LARGE ICON FACE FRAMED PRINT



OBEY FRAMED P.O.P

- FRAMED PRINT

O/S

ASSORTED



263732504 | OBEY VERTICAL



- RIB MEGAN TANK
- CUSTOM GARMENT DYED TANK WITH GRAPHIC
 - 100% COTTON RIB
 - SLIM FIT CROPPED TANK
- XS S M L XL



DIGITAL BLACK

PIQUANT GREEN

263732505 | OBEY HEARTS



- RIB MEGAN TANK
- CUSTOM GARMENT DYED TANK WITH GRAPHIC
 - 100% COTTON RIB
 - SLIM FIT CROPPED TANK
- XS S M L XL



PASTEL LAVENDER

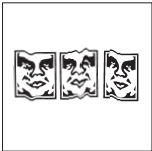
DARK BROWN

263732506 | OBEY WAVY SCAN



WARM TAUPE

- RIB MEGAN TANK
- CUSTOM GARMENT DYED TANK WITH GRAPHIC
 - 100% COTTON RIB
 - SLIM FIT CROPPED TANK
- XS S M L XL



WHITE

263732507 | EYE, LIPS, OBEY



PASTEL LAVENDER

- RIB MEGAN TANK
- CUSTOM GARMENT DYED TANK WITH GRAPHIC
 - 100% COTTON RIB
 - SLIM FIT CROPPED TANK
- XS S M L XL



DIGITAL BLACK

263722549 | OBEY NEON YELLOW



- SPAGHETTI STRAP CROP
- CUSTOM GARMENT DYED TANK WITH GRAPHIC
 - 100% COTTON RIB
 - CROPPED TANK
- XS S M L XL



PASTEL LAVENDER

BLUE DANUBE

263722547 | OBEY SPARKLES



- SPAGHETTI STRAP CROP
- CUSTOM GARMENT DYED TANK WITH GRAPHIC
 - 100% COTTON RIB
 - CROPPED TANK
- XS S M L XL



BLUE DANUBE

CLAY



PASTEL LAVENDER

SPAGHETTI STRAP CROP

- CUSTOM GARMENT DYED TANK WITH GRAPHIC
- 100% COTTON RIB
- CROPPED TANK

XS S M L XL



CLAY

267822509 | OBEY RADICAL



DARK BROWN

- DREY TANK
- CUSTOM GARMENT DYED TANK WITH GRAPHIC
 - 100% COTTON RIB
 - RELAXED FIT
- XS S M L XL



CLAY

267822508 | OBEY LOVE NOTE



ORCHID PETAL

- DREY TANK
- CUSTOM GARMENT DYED TANK WITH GRAPHIC
 - 100% COTTON RIB
 - RELAXED FIT
- XS S M L XL



CLAY

263742510 | OBEY RADICAL LOVE



QUIET GREEN

- CROPPED EMMA FITTED TEE
- CUSTOM GARMENT DYED TEE WITH GRAPHIC
 - 100% COTTON RIB
 - CROPPED FIT
- XS S M L XL



WHITE

263742511 | OBEY COLLAGE



JAVA BROWN

- CROPPED EMMA FITTED TEE
- CUSTOM GARMENT DYED TEE WITH GRAPHIC
 - 100% COTTON RIB
 - CROPPED FIT
- XS S M L XL



WHITE

263742512 | THE FUTURE IS IN THE FRUITS OF OUR LABOR



PASTEL LAVENDER

- CROPPED EMMA FITTED TEE
- CUSTOM GARMENT DYED TEE WITH GRAPHIC
 - 100% COTTON RIB
 - CROPPED FIT
- XS S M L XL



WHITE

263742513 | OBEY YOU HAVE TO HAVE A DREAM



WHITE

- CROPPED EMMA FITTED TEE
- CUSTOM GARMENT DYED TEE WITH GRAPHIC
 - 100% COTTON RIB
 - CROPPED FIT
- XS S M L XL



JAVA BROWN

263782514 | OBEY PEACE EYES



DARK BROWN

- CROPPED CHLOE FITTED TEE
- CUSTOM GARMENT DYED TEE WITH GRAPHIC
 - 100% COTTON RIB
 - CROPPED FIT

XS S M L XL



WHITE

263782515 | OBEY PEACEFUL PROTEST



ORCHID PETAL

- CROPPED CHLOE FITTED TEE
- CUSTOM GARMENT DYED TEE WITH GRAPHIC
 - 100% COTTON RIB
 - CROPPED FIT

XS S M L XL



WHITE

263782516 | OBEY LITTLE LAMB



- CROPPED CHLOE FITTED TEE
- CUSTOM GARMENT DYED TEE WITH GRAPHIC
 - 100% COTTON RIB
 - CROPPED FIT
- XS S M L XL



WHITE

SURF SPRAY

263782517 | OBEY ROSE STUDIOS



- CROPPED CHLOE FITTED TEE
- CUSTOM GARMENT DYED TEE WITH GRAPHIC
 - 100% COTTON RIB
 - CROPPED FIT
- XS S M L XL



DIGITAL BLACK

WHITE

267802518 | OBEY OBEY OBEY OBEY



HYDRANGEA

HAYDEN TEE

- CUSTOM GARMENT DYED TEE WITH GRAPHIC
- 86% COTTON 14% SPANDEX
- RELAXED FIT

XS S M L XL



DIGITAL BLACK

267802519 | OBEY NOTHING



IRISH CREAM

HAYDEN TEE

- CUSTOM GARMENT DYED TEE WITH GRAPHIC
- 86% COTTON 14% SPANDEX
- RELAXED FIT

XS S M L XL



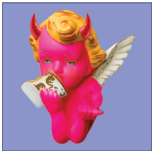
DIGITAL BLACK

267802520 | OBEY LITTLE DEVIL



DIGITAL BLACK

- HAYDEN TEE
- CUSTOM GARMENT DYED TEE WITH GRAPHIC
 - 86% COTTON 14% SPANDEX
 - RELAXED FIT
- XS S M L XL



HYDRANGEA

267802521 | OBEY CARNATION KITTENS



WHITE

- HAYDEN TEE
- CUSTOM GARMENT DYED TEE WITH GRAPHIC
 - 86% COTTON 14% SPANDEX
 - RELAXED FIT
- XS S M L XL



HYDRANGEA

267842522 | OBEY BUNNY



UNBLEACHED

- STEVIE TEE
- CUSTOM GARMENT DYED TEE WITH GRAPHIC
 - 95% COTTON 5% SPANDEX RIB
 - RAGLAN SHORT SLEEVE TEE
- XS S M L XL



SURF SPRAY

267842523 | OBEY EARTH GIVES ME THE CREEPS



PASTEL LAVENDER

- STEVIE TEE
- CUSTOM GARMENT DYED TEE WITH GRAPHIC
 - 95% COTTON 5% SPANDEX RIB
 - RAGLAN SHORT SLEEVE TEE
- XS S M L XL



UNBLEACHED



SURF SPRAY

STEVIE TEE

- CUSTOM GARMENT DYED TEE WITH GRAPHIC
- 95% COTTON 5% SPANDEX RIB
- RAGLAN SHORT SLEEVE TEE

XS S M L XL



PASTEL LAVENDER

267792526 | OBEY BURGER

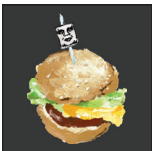


WHITE

KAYLIN TEE

- CUSTOM GARMENT DYED TEE WITH GRAPHIC
- 100% COTTON
- SHRUNKEN TEE

XS S M L XL



DIGITAL BLACK

267792527 | OBEY SEEDS GROW

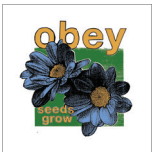


DIGITAL BLACK

KAYLIN TEE

- CUSTOM GARMENT DYED TEE WITH GRAPHIC
- 100% COTTON
- SHRUNKEN TEE

XS S M L XL



WHITE



SURF BLUE

- KAYLIN TEE
- CUSTOM GARMENT DYED TEE WITH GRAPHIC
 - 100% COTTON
 - SHRUNKEN TEE
- XS S M L XL



DIGITAL BLACK



WHITE

- KAYLIN TEE
- CUSTOM GARMENT DYED TEE WITH GRAPHIC
 - 100% COTTON
 - SHRUNKEN TEE
- XS S M L XL



SURF BLUE

267782530 | OBEY GROW TOGETHER



- WEEKEND CROP TEE
- CUSTOM GARMNET DYED TEE WITH GRAPHIC
 - 100% COTTON
 - CROPPED TEE
- XS S M L XL



DIGITAL BLACK

UNBLEACHED

267782531 | LET YOUR WORRIES FADE AWAY



- WEEKEND CROP TEE
- CUSTOM GARMNET DYED TEE WITH GRAPHIC
 - 100% COTTON
 - CROPPED TEE
- XS S M L XL



UNBLEACHED

DIGITAL BLACK



BLUE DANUBE

- WEEKEND CROP TEE
- CUSTOM GARMNET DYED TEE WITH GRAPHIC
 - 100% COTTON
 - CROPPED TEE
- XS S M L XL



UNBLEACHED



WARM TAUPE

- WEEKEND CROP TEE
- CUSTOM GARMNET DYED TEE WITH GRAPHIC
 - 100% COTTON
 - CROPPED TEE
- XS S M L XL



DIGITAL BLACK

267622541 | FLAMMING DICE



- RAEGAN TEE
- CUSTOM GARMNET DYED TEE WITH GRAPHIC
 - 100% COTTON
 - ROOMY BOX TEE
- XS S M L XL



JAVA BROWN

UNBLEACHED

267622542 | OBEY IN MOTION



- RAEGAN TEE
- CUSTOM GARMNET DYED TEE WITH GRAPHIC
 - 100% COTTON
 - ROOMY BOX TEE
- XS S M L XL



UNBLEACHED

CORONET BLUE

267622543 | OBEY SOFT FRUIT



ORCHID PETAL

- RAEGAN TEE
- CUSTOM GARMNET DYED TEE WITH GRAPHIC
 - 100% COTTON
 - ROOMY BOX TEE
- XS S M L XL



WHITE

267622544 | OBEY ROSE COLLAGE



JAVA BROWN

- RAEGAN TEE
- CUSTOM GARMNET DYED TEE WITH GRAPHIC
 - 100% COTTON
 - ROOMY BOX TEE
- XS S M L XL



WHITE

267622545 | OBEY ROOM TO GROW



WHITE

- RAEGAN TEE
- CUSTOM GARMNET DYED TEE WITH GRAPHIC
 - 100% COTTON
 - ROOMY BOX TEE
- XS S M L XL



JAVA BROWN

267622546 | VISUAL DISRUPTORS



QUIET GREEN

- RAEGAN TEE
- CUSTOM GARMNET DYED TEE WITH GRAPHIC
 - 100% COTTON
 - ROOMY BOX TEE
- XS S M L XL



WHITE

267862534 | OBEY SUPER POWER



PIGMENT UNBLEACHED

- MAXINE PIGMENT TEE
- CUSTOM PIGMENT DYED TEE WITH GRAPHIC
 - 100% COTTON
 - BOYFRIEND FIT
- XS S M L XL



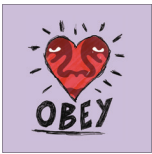
PIGMENT DIGITAL
BLACK

267862535 | HEART SCRABBLE



WHITE

- MAXINE PIGMENT TEE
- CUSTOM PIGMENT DYED TEE WITH GRAPHIC
 - 100% COTTON
 - BOYFRIEND FIT
- XS S M L XL



PIGMENT
ORCHID PETAL

267862536 | OBEY CARRIER PIGEON



PIGMENT SURF SPRAY

- MAXINE PIGMENT TEE
- CUSTOM PIGMENT DYED TEE WITH GRAPHIC
 - 100% COTTON
 - BOYFRIEND FIT
- XS S M L XL



WHITE

267862537 | OBEY SPLAT



PIGMENT CORONET
BLUE

- MAXINE PIGMENT TEE
- CUSTOM PIGMENT DYED TEE WITH GRAPHIC
 - 100% COTTON
 - BOYFRIEND FIT
- XS S M L XL



PIGMENT WARM
TAUPE

267862538 | PAINT BOUQUET



PIGMENT ORCHID PETAL

- MAXINE PIGMENT TEE
- CUSTOM PIGMENT DYED TEE WITH GRAPHIC
 - 100% COTTON
 - BOYFRIEND FIT
- XS S M L XL



PIGMENT
UNBLEACHED

267862539 | OBEY MIXED FRUIT



PIGMENT DIGITAL
BLACK

- MAXINE PIGMENT TEE
- CUSTOM PIGMENT DYED TEE WITH GRAPHIC
 - 100% COTTON
 - BOYFRIEND FIT
- XS S M L XL



PIGMENT
UNBLEACHED

267832539 | OBEY I LEARNED FROM GROWING



- EVA LONGSLEEVE TEE
- CROPPED BOYFRIEND TEE WITH PRINTED GRAPHIC
 - 100% COTTON
 - CROPPED BOYFRIEND LONG SLEEVE

XS S M L XL



DIGITAL BLACK

SURF SPRAY

267832540 | ORGANIZED CHAOS



- EVA LONGSLEEVE TEE
- CROPPED BOYFRIEND TEE WITH PRINTED GRAPHIC
 - 100% COTTON
 - CROPPED BOYFRIEND LONG SLEEVE

XS S M L XL



DIGITAL BLACK

PASTEL LAVENDER

OBEY



SUMMER 2024 | WOMENS COLLECTION















