

OBHEY

SUMMER 2023 | WOMEN'S COLLECTION



The OBEY campaign can be explained as an experiment in phenomenology. The first aim of phenomenology is to reawaken a sense of wonder about one's environment. The OBEY campaign attempts to stimulate curiosity and bring people to question both the campaign and their relationship with their surroundings. Because people are not used to seeing advertisements or propaganda for which the motive is not obvious, frequent and novel encounters with OBEY propaganda provoke thought and possible frustration, nevertheless revitalizing the viewer's perception and attention to detail. To catalyze a thoughtful dialogue deconstructing the process of image absorption is the ultimate goal. All in the name of fun and observation.

The medium is the message.

17462 Von Karman Avenue Irvine, CA 92614

obeyclothing.com | obeygiant.com
949.596.8400

TABLE OF CONTENTS



SUMMER 2023

7	17	24	27
SHEPARD FAIREY COLLECTION	MATCHING SETS	UNDERWEAR GROUP	TOPS
34	41	45	48
BOTTOMS	SKIRTS	DRESSES	UNISEX
60	63	68	73
HEADWEAR	SOCKS / BAGS	ACCESSOIRES	PRINTABLES



OBEEY is committed to bettering itself in its manufacturing chain both on an environmental level but also with regard to worker's rights. We look at reducing our environmental footprint whenever possible - from choosing sustainable and socially responsible manufacturing techniques to delivering our clothing to you. This is an ongoing challenge and we continue to push ourselves every season to do better. We are constantly exploring new options in the market. In 2015, we started working with Fair Trade to offer certified garments that ensure economic empowerment to factory workers. We have moved to sustainable factories whenever possible and look to industry developments allowing us to use more recycled and renewable materials. These steps are important to our company and are an ongoing process. We respect everything it takes to make the garments we sell and want to ensure we are doing our best for the world around us.

Our IDEALS program highlights the products that are sustainably built, are produced in Fair Trade factories, are made from organic cotton, or are made from recycled fabrics. Look for these icons on select clothing in stores and online. They represent conscious approaches to our production process and are important to the OBEEY ethos.

"Social responsibility and justice have always been very important to OBEEY in both message and practice. We work with manufacturers that provide a fair wage and ethical working conditions, and have now made the further step to become an official Fair Trade USA partner (www.FairTradeusa.org). Our Fair Trade Certified™ garments are produced in factories that operate against rigorous social, environmental and economic standards, where workers can do their jobs with pride and dignity. For every Fair Trade Certified product sold, workers earn more money to fight poverty and fund community development.

Our hope is not only to benefit the workers of the Fair Trade factories, but to lead by example and promote the expansion of the Fair Trade apparel program."

- Shepard Fairey



This icon indicates that this garment is constructed sustainably. More than just sustainable raw materials, we consider the social environment, and economic impact of its production.



This icon indicates that this garment is constructed with organic cotton. Certified organic cotton following strict regulations without the use of GMO's harmful pesticides, or synthetic fertilizers.



Fair Trade USA's Fair Trade Certified™ label empowers you, the consumer, with the knowledge that your purchase has a positive impact on the people who sew and grow the products you love.

For every OBEY Fair Trade Certified™ product sold, a percentage is paid directly to a special fund for the workers that create our goods. They decide collectively how to spend these funds based on their communities greatest needs: from scholarships, school buses, to medical care, disaster and relief services.



This icon indicates that this garment is constructed with recycled materials. Per t-shirt, 1.6 recycled plastic bottles and .10lbs of recycled cotton are used.

Reduce, Reuse, Recycle!



FAIRTRADE



Fair Trade is a market-based approach that empowers factory workers and farmers to fight poverty, produce quality products, protect the environment and build strong thriving communities for generations to come. At the same time, Fair Trade USA's Fair Trade Certified™ label empowers you, the consumer, with the knowledge that your purchase has a positive impact on the people who sew and grow the products you love. For every OBEY Fair Trade Certified™ product sold, a percentage is paid directly to a special fund for the workers that create our goods. They decide collectively how to spend these funds based on the community's greatest needs: from scholarships and school buses, to medical care and disaster relief services.



SHEPARD FAIREY

ARTIST - ACTIVIST

Shepard Fairey, founder of OBEY and OBEY Clothing, was born in Charleston, South Carolina. He received his Bachelor of Fine Arts in Illustration at the Rhode Island School of Design in Providence, Rhode Island. In 1989 he created the "Andre the Giant has a Posse" sticker that transformed into the OBEY GIANT art campaign, with imagery that has changed the way people see art and the urban landscape. After 29 years, his work has evolved into an acclaimed body of art, which includes the 2008 "Hope" portrait of Barack Obama, found at the Smithsonian's National Portrait Gallery. The artist collaborated with Amplifier in 2017 to create the We The People series recognizable during the Women's Marches and other rallies around the world in defense of national and global social justice issues.

Fairey's stickers, guerilla street art presence, and 85 plus public murals are recognizable worldwide. His works are in the permanent collections of the Museum of Modern Art (MoMA), the Victoria and Albert Museum, the Smithsonian's National Portrait Gallery, the Boston Institute of Contemporary Art, the San Francisco Museum of Modern Art, and many others.

Fairey's distinct and recognizable style is unique to him and to OBEY. His lifestyle is the catalyst for all the brand does and the center point of influence and inspiration. This section isolates his work, from his classic graphic style to fine art renderings on garments. Each season, Shepard tackles new ideas and adds his special touch that makes OBEY what it is.

We hope you enjoy.

OBEY COMPUTER

165263482

DESCRIPTION: CLASSIC FIT T-SHIRT

CONTENT: 100% COTTON

GOOD GREY, BLACK, FOREST GREEN

XS S M L XL XXL



PLEASE NOTE UNISEX STYLES ARE SIZED IN MEN'S SIZING



GOOD GREY



BLACK



FOREST GREEN

D1 - SHEPARD FAIREY COLLECTION - CLASSIC TEE

OBEY OKAY

165263474

DESCRIPTION: CLASSIC FIT T-SHIRT

CONTENT: 100% COTTON

CREAM, BLACK, CUCUMBER

XS S M L XL XXL



PLEASE NOTE UNISEX STYLES ARE SIZED IN MEN'S SIZING



CREAM



BLACK



CUCUMBER

D1 - SHEPARD FAIREY COLLECTION - CLASSIC TEE

OBEY SUN

165263475

DESCRIPTION: CLASSIC FIT T-SHIRT

CONTENT: 100% COTTON

BLACK, FOREST GREEN, WHITE

XS S M L XL XXL

PLEASE NOTE UNISEX STYLES ARE SIZED IN MEN'S SIZING



FOREST GREEN



WHITE

BLACK

D1 - SHEPARD FAIREY COLLECTION - CLASSIC TEE

OBEY OP

165263476

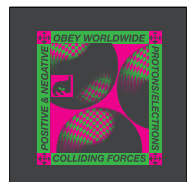
DESCRIPTION: CLASSIC FIT T-SHIRT

CONTENT: 100% COTTON

NAVY, BLACK, FOREST GREEN

XS S M L XL XXL

PLEASE NOTE UNISEX STYLES ARE SIZED IN MEN'S SIZING



BLACK



FOREST GREEN

NAVY

D1 - SHEPARD FAIREY COLLECTION - CLASSIC TEE

OBEY OP PERSPECTIVE

PLEASE NOTE UNISEX STYLES ARE SIZED IN MEN'S SIZING

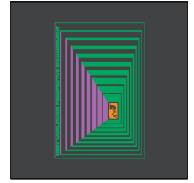
165263477

DESCRIPTION: CLASSIC FIT T-SHIRT

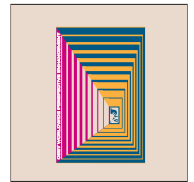
CONTENT: 100% COTTON

CORAL, BLACK, CREAM

XS S M L XL XXL



BLACK



CREAM

CORAL

D1 - SHEPARD FAIREY COLLECTION - CLASSIC TEE

OBEY GLOBAL TRANSMISSION

PLEASE NOTE UNISEX STYLES ARE SIZED IN MEN'S SIZING

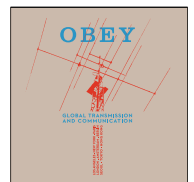
165263478

DESCRIPTION: CLASSIC FIT T-SHIRT

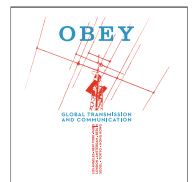
CONTENT: 100% COTTON

BLACK, SAND, WHITE

XS S M L XL XXL



SAND



WHITE

BLACK

D1 - SHEPARD FAIREY COLLECTION - CLASSIC TEE

OBEY VANISHING POINT

165263479

DESCRIPTION: CLASSIC FIT T-SHIRT

CONTENT: 100% COTTON

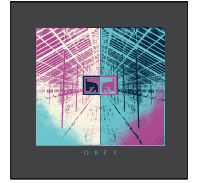
SILT, BLACK, NAVY

XS S M L XL XXL

PLEASE NOTE UNISEX STYLES ARE SIZED IN MEN'S SIZING



SILT



BLACK



NAVY

D1 - SHEPARD FAIREY COLLECTION - CLASSIC TEE

OBEY UNIVERSAL DIGNITY

165263480

DESCRIPTION: CLASSIC FIT T-SHIRT

CONTENT: 100% COTTON

CREAM, BLACK, GOOD GREY

XS S M L XL XXL

PLEASE NOTE UNISEX STYLES ARE SIZED IN MEN'S SIZING



CREAM



BLACK



GOOD GREY

D1 - SHEPARD FAIREY COLLECTION - CLASSIC TEE

OBEY OKAY

163003474

DESCRIPTION: ORGANIC TEE

CONTENT: 100% ORGANIC COTTON

FADED BLACK, PALM LEAF, PAPAYA SMOOTHIE

XS S M L XL XXL



FADED BLACK



PALM LEAF



PAPAYA SMOOTHIE

D1 - SHEPARD FAIREY COLLECTION - ORGANIC TEE

PLEASE NOTE UNISEX STYLES ARE SIZED IN MEN'S SIZING

OBEY SUN

163003475

DESCRIPTION: ORGANIC TEE

CONTENT: 100% ORGANIC COTTON

PAPAYA SMOOTHIE, FADED BLACK, CELERY JUICE

XS S M L XL XXL



PAPAYA SMOOTHIE



FADED BLACK



CELERY JUICE

D1 - SHEPARD FAIREY COLLECTION - ORGANIC TEE

PLEASE NOTE UNISEX STYLES ARE SIZED IN MEN'S SIZING

OBEY OP

163003476

DESCRIPTION: ORGANIC TEE

CONTENT: 100% ORGANIC COTTON

SAGO, CELERY JUICE, PAPAYA SMOOTHIE

XS S M L XL XXL



PLEASE NOTE UNISEX STYLES ARE SIZED IN MEN'S SIZING



SAGO



CELERY JUICE



PAPAYA SMOOTHIE

D1 - SHEPARD FAIREY COLLECTION - ORGANIC TEE

OBEY OP PERSPECTIVE

163003477

DESCRIPTION: ORGANIC TEE

CONTENT: 100% ORGANIC COTTON

PALM LEAF, TRANQUIL BLUE, SAGO

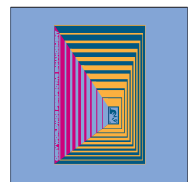
XS S M L XL XXL



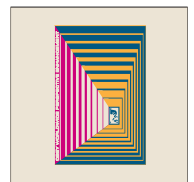
PLEASE NOTE UNISEX STYLES ARE SIZED IN MEN'S SIZING



PALM LEAF



TRANQUIL BLUE



SAGO

D1 - SHEPARD FAIREY COLLECTION - ORGANIC TEE

OBEY GLOBAL TRANSMISSION

PLEASE NOTE UNISEX STYLES ARE SIZED IN MEN'S SIZING

163003478

DESCRIPTION: ORGANIC TEE

CONTENT: 100% ORGANIC COTTON

SAGO, FADED BLACK, TERRACOTTA

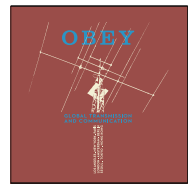
XS S M L XL XXL



SAGO



FADED BLACK



TERRACOTTA

D1 - SHEPARD FAIREY COLLECTION - ORGANIC TEE

OBEY VANISHING POINT

PLEASE NOTE UNISEX STYLES ARE SIZED IN MEN'S SIZING

163003479

DESCRIPTION: ORGANIC TEE

CONTENT: 100% ORGANIC COTTON

TERRACOTTA, FADED BLACK, SAGO

XS S M L XL XXL



TERRACOTTA



FADED BLACK



SAGO

D1 - SHEPARD FAIREY COLLECTION - ORGANIC TEE

OBEY PEACE DOVE BLUE

100733409

DESCRIPTION: RESPONSIBLE TOTE BAG MADE FROM RECYCLED YARNS

CONTENT: 65% RECYCLED COTTON 35% RECYCLED PET PLASTIC

NATURAL

O/S



NATURAL

SHEPARD FAIREY COLLECTION - ESSENTIALS

COVERT TO OVERT BOOK

326000035M

DESCRIPTION: COVERT TO OVERT SHOWCASES SHEPARD FAIREY'S EVOLUTION FROM WORKS ON PAPER TO GRANDER ART INSTALLATIONS, CROSS-CULTURAL WORKS, AND MUSIC/ART COLLABORATIONS

ASSORTED

O/S



ASSORTED

SHEPARD FAIREY COLLECTION - ESSENTIALS

MATCHING SETS



BECK
751-5555

Lo Zingaro

Ristorante

Pizzeria

Currys Artists

ADELINA WORK SHIRT

281210108

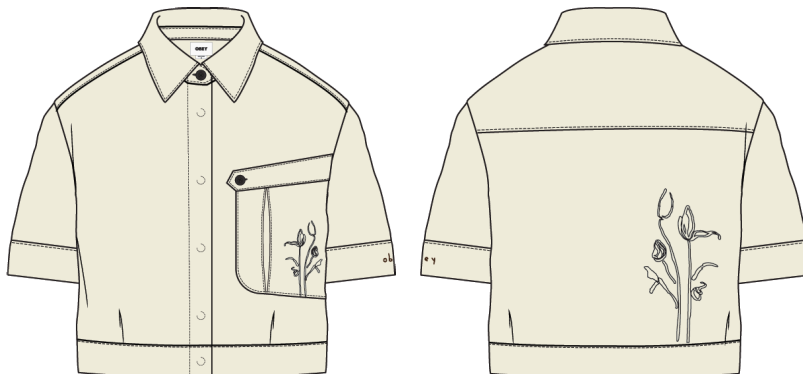
FIT: REGULAR FIT

DESCRIPTION: EMBROIDERED SHORT SLEEVE WORK SHIRT

100% COTTON

UNBLEACHED MULTI

XS S M L XL



UNBLEACHED MULTI

D1 - MATCHING SETS

ADELINA PLEATED PANT

242020098

FIT: BAGGY FIT

DESCRIPTION: EMBROIDERED PLEATED PANT

100% COTTON

UNBLEACHED MULTI

24 25 26 27 28 29 30 31 32



UNBLEACHED MULTI

D1 - MATCHING SETS

MARIA CROPPED TOP

281170005

FIT: CROPPED FIT

DESCRIPTION: CROPPED TOP WITH TIE

100% MODAL

VERY FUCHSIA MULTI

XS S M L XL



VERY FUCHSIA MULTI

D1 - MATCHING SETS

MARIA RESORT SHIRT

281210109

FIT: REGULAR FIT

DESCRIPTION: PRINTED RESORT SHIRT WITH POP COLOR ACCENTS

100% MODAL

VERY FUCHSIA MULTI

XS S M L XL



VERY FUCHSIA MULTI

D1 - MATCHING SETS

MARIA SHORT

272120094

FIT: REGULAR FIT

DESCRIPTION: PRINTED MODAL BASKETBALL SHORT

100% MODAL

VERY FUCHSIA MULTI

XS S M L XL



VERY FUCHSIA MULTI

D1 - MATCHING SETS

LYDIA GOLD SHOULDER TOP

231030120

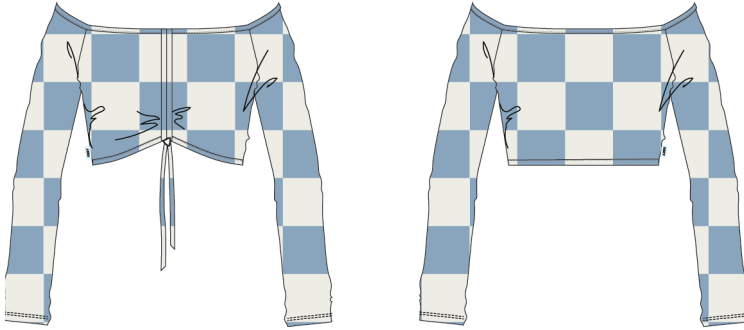
FIT: BABY FIT

DESCRIPTION: KNIT COLD SHOULDER BABY TOP

100% COTTON

SEAL ICE MULTI

XS S M L XL



SEAL ICE MULTI

D1 - MATCHING SETS

LYDIA MINI SKIRT

411550107

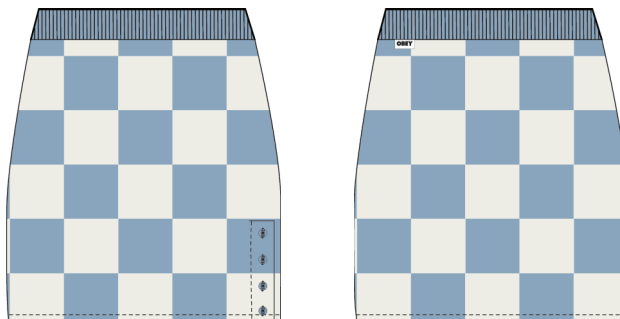
FIT: REGULAR FIT

DESCRIPTION: MINI SKIRT WITH A BUTTON CLOSURE PLACKET

100% COTTON

SEAL ICE MULTI

XS S M L XL



SEAL ICE MULTI

D1 - MATCHING SETS

LILLIAN CROPPED TANK

234050133

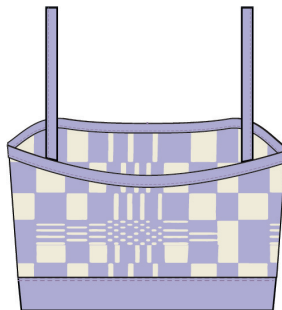
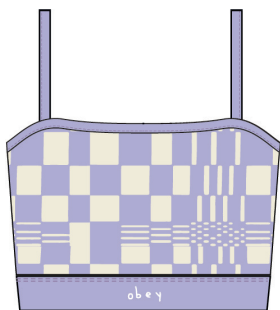
FIT: CROPPED FIT

DESCRIPTION: JACQUARD BRA TOP WITH EMBROIDERY

100% COTTON

DIGITAL LAVENDER MULTI, BLACK MULTI

XS S M L XL



BLACK MULTI

DIGITAL LAVENDER MULTI

D1 - MATCHING SETS

LILLIAN SHORT

272120093

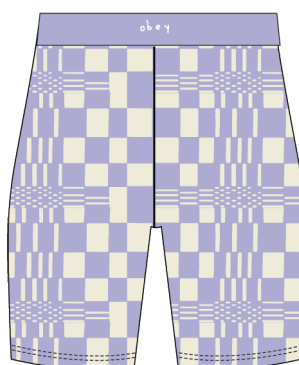
FIT: FITTED

DESCRIPTION: JACQUARD SHORT WITH OBEY EMBROIDERY

100% COTTON

DIGITAL LAVENDER MULTI, BLACK MULTI

XS S M L XL



BLACK MULTI

DIGITAL LAVENDER MULTI

D1 - MATCHING SETS

LANA TANK

234050143

FIT: CROPPED FIT

DESCRIPTION: WOMEN'S CROPPED TANK WITH CUSTOM ELASTICBAND

95% RAYON 5% SPANDEX

BLACK MULTI

XS S M L XL



BLACK MULTI

D1 - MATCHING SETS

LANA BIKE SHORT

272120099

FIT: FITTED

DESCRIPTION: WOMEN'S HIGH WAISTED RETRO BIKE SHORT WITH CUSTOM ELASTIC BAND

95% RAYON 5% SPANDEX

BLACK MULTI

XS S M L XL



BLACK MULTI

D1 - MATCHING SETS

LISA RIB TANK

234050127

FIT: BABY FIT

DESCRIPTION: RIB BRA TOP WITH CUSTOM ELASTIC BAND

60% COTTON 40% MODAL

SEPIA MULTI, DIGITAL LAVENDER MULTI

XS S M L XL



DIGITAL LAVENDER MULTI

SEPIA MULTI

D1 - MATCHING SETS

KORI TERRY SHORT

272120092

FIT: REGULAR FIT

DESCRIPTION: TERRY SHORT WITH LOGO ELASTIC BAND AND EMBROIDERY

100% COTTON

SEPIA, ASH GREY

XS S M L XL



ASH GREY

SEPIA

D1 - MATCHING SETS



**UNDERWEAR
GROUP**

OBEY BRALETTE 2 PACK

231170030

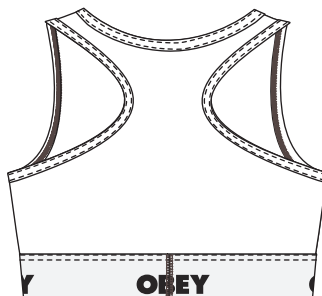
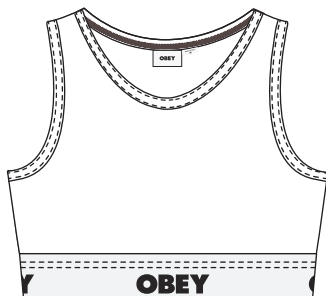
FIT: CROPPED FIT

DESCRIPTION: OBEY WIRELESS BRALETTE WITH LOGO ELASTIC BAND

95% COTTON 5% ELASTANE

WHITE, BLACK

XS S M L XL



BLACK

WHITE

D1 - TOPS

OBEY CHEEKY 2 PACK

200090000

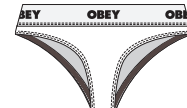
FIT: CROPPED FIT

DESCRIPTION: WOMEN'S CHEEKY UNDERWEAR

95% COTTON 5% ELASTANE

BLACK, WHITE

XS S M L XL



WHITE

BLACK

D1 - TOPS

OBEY BIKE SHORT

272120098

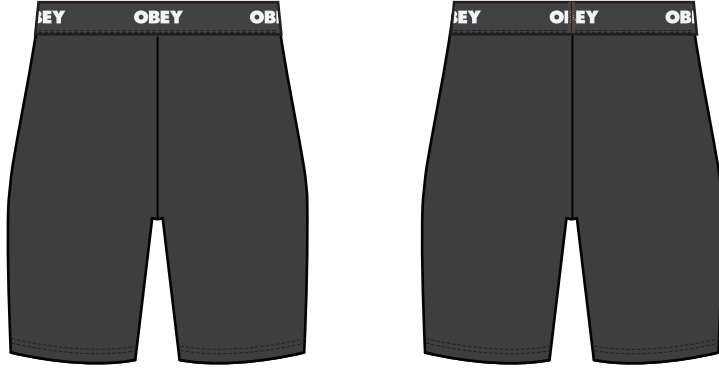
FIT: CROPPED FIT

DESCRIPTION: WOMEN'S HIGH WAISTED RETRO BIKE SHORT WITH CUSTOM ELASTIC BAND

95% RAYON 5% SPANDEX

BLACK

XS S M L XL



BLACK

D1 - TOPS

175
PURCHASE ST.

TOPS



JOY RINGER TANK

234050134

FIT: REGULAR FIT

DESCRIPTION: EMBROIDERED STRIPE RINGER TANK TOP

95% RAYON 5% SPANDEX

SATIN BLUE MULTI, PINK PUNCH MULTI

XS S M L XL



PINK PUNCH MULTI

SATIN BLUE MULTI

D1 - TOPS

EVA CROPPED TANK

234050140

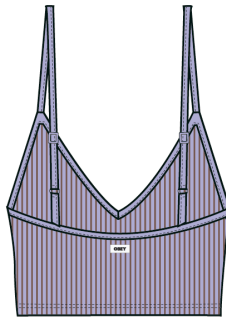
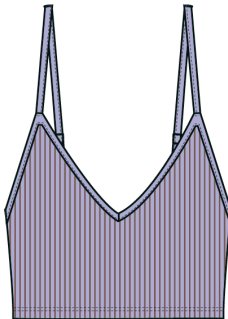
FIT: CROPPED FIT

DESCRIPTION: WOMEN'S TWO TONE RIB KNIT CROPPED TOP

95% COTTON 5% SPANDEX

DIGITAL LAVENDER MULTI, PALM LEAF MULTI

XS S M L XL



PALM LEAF MULTI

DIGITAL LAVENDER MULTI

D1 - TOPS

ASHLEY BANDEAU TUBE TOP

231140006

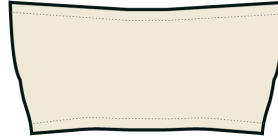
FIT: FITTED

DESCRIPTION: PRINTED BANDEAU TUBE TOP

95% RAYON 5% SPANDEX

UNBLEACHED MULTI, SEPIA MULTI

XS S M L XL



SEPIA MULTI

UNBLEACHED MULTI

D1 - TOPS

ISLA ONE SHOULDER TANK

234050141

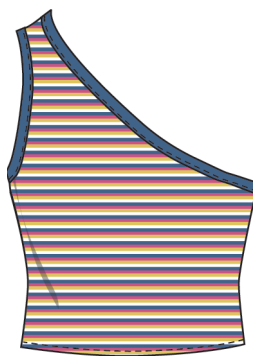
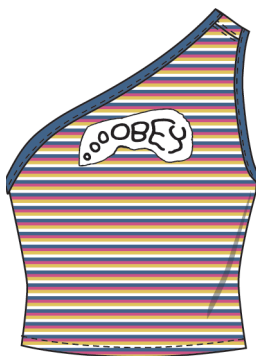
FIT: FITTED

DESCRIPTION: ASYMMETRICAL CROPPED STRIPED TANK

60% COTTON 40% MODAL

LAZULI BLUE MULTI, PINK PUNCH MULTI

XS S M L XL



PINK PUNCH MULTI

LAZULI BLUE MULTI

D1 - TOPS

MOLLY CROPPED TOP

234050136

FIT: BABY FIT

DESCRIPTION: JACQUARD CROPPED TANK WITH EMBROIDERY

100% COTTON

SATIN BLUE MULTI

XS S M L XL



SATIN BLUE MULTI

D1 - TOPS

CALLIE CROPPED TANK

234050139

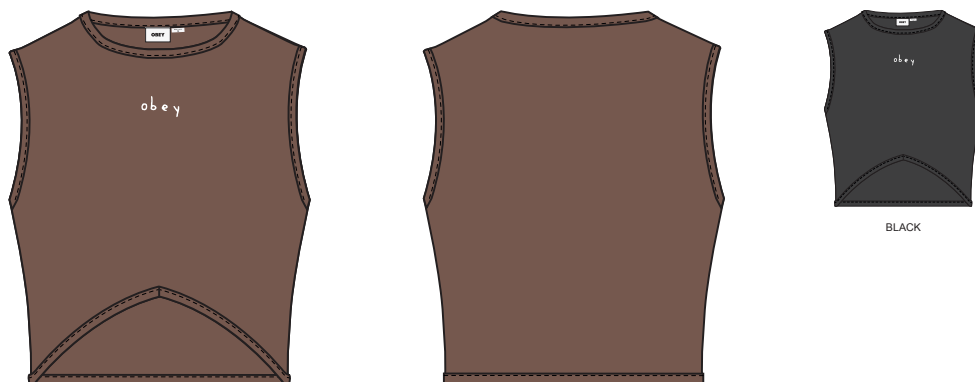
FIT: FITTED

DESCRIPTION: CROPPED TOP WITH EMBROIDERY

95% RAYON 5% SPANDEX

SEPIA, BLACK

XS S M L XL



SEPIA

D1 - TOPS

ARIELLA STRIPE CROPPED TEE SS

231080144

FIT: LOOSE FIT

DESCRIPTION: STRIPED CROPPED TEE WITH A LOGO EMBROIDERY

100% COTTON

SKY BLUE MULTI, DIGITAL LAVENDER MULTI

XS S M L XL



DIGITAL LAVENDER MULTI

SKY BLUE MULTI

D1 - TOPS

CLARA BABY TEE

231080148

FIT: FITTED

DESCRIPTION: JACQUARDED CROPPED TEE WITH A LOGO EMBROIDERY

100% COTTON

SUNFLOWER MULTI, SEAL ICE MULTI

XS S M L XL



SEAL ICE MULTI

SUNFLOWER MULTI

D1 - TOPS

HANNA STRIPE BABY TEE SS

231080149

FIT: BABY FIT

DESCRIPTION: RIB KNIT LETTUCE EDGE CROPPED TOP

95% COTTON 5% SPANDEX

TURQUOISE SEA MULTI, SEPIA MULTI

XS S M L XL



SEPIA MULTI

TURQUOISE SEA MULTI

D1 - TOPS

NATALIE SLEEVELESS POLO TANK

234050142

FIT: CROPPED FITTED

DESCRIPTION: TWO TONE RIB KNIT CROPPED SLEEVELESS POLO

95% COTTON 5% SPANDEX

SEPIA MULTI, DIGITAL LAVENDER MULTI

XS S M L XL



DIGITAL LAVENDER MULTI

SEPIA MULTI

D1 - TOPS

LONDON CROPPED SHIRT

281200121

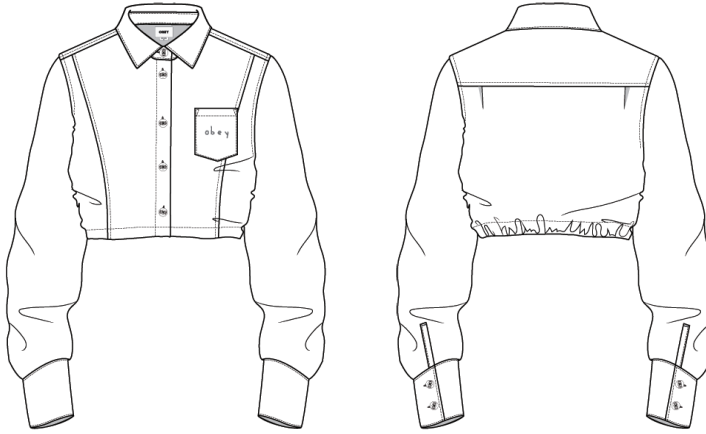
FIT: CROPPED FIT

DESCRIPTION: ELASTICATED HEM CROPPED POPLIN SHIRT

100% COTTON

WHITE, SEPIA

XS S M L XL



WHITE



SEPIA

D1 - TOPS

BOTTOMS



BRIGHTON CARPENTER PANT

242020087

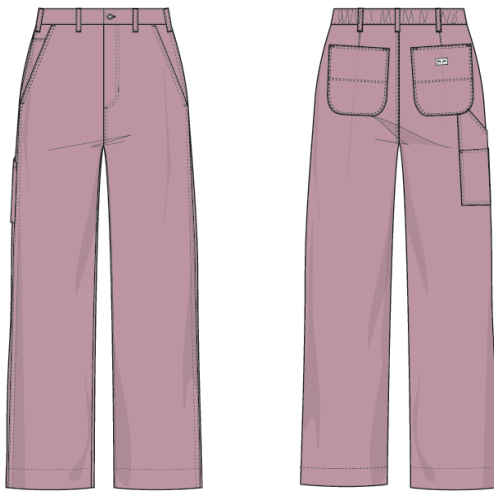
FIT: REGULAR FIT

DESCRIPTION: PAINTERS PANT

100% COTTON

VINTAGE PINK, PALM LEAF

24 25 26 27 28 29 30 31 32



PALM LEAF

VINTAGE PINK

D1- BOTTOMS

MILA WORK PANT

242020093

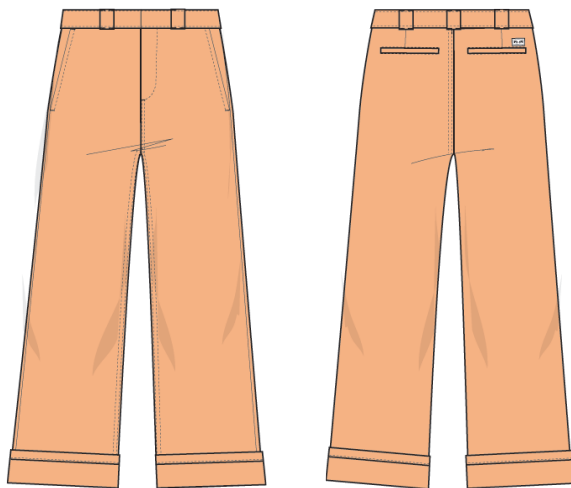
FIT: WIDE FIT

DESCRIPTION: TWILL WORK PANTS

100% COTTON

PAPAYA SMOOTHIE, BAY LEAF

24 25 26 27 28 29 30 31 32



BAY LEAF

PAPAYA SMOOTHIE

D1- BOTTOMS

LEAH II BAGGY PANT

242010049

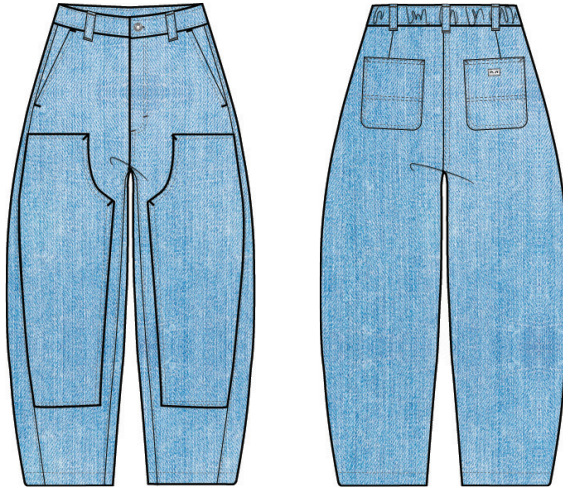
FIT: RELAXED FIT

DESCRIPTION: BAGGY DOUBLE KNEE DENIM

100% COTTON

LIGHT INDIGO, DUSTY BLACK

24 25 26 27 28 29 30 31 32



DUSTY BLACK

LIGHT INDIGO

D1- BOTTOMS

HAZEL II CROPPED WIDE PANT

242000115

FIT: REGULAR FIT

DESCRIPTION: CROPPED WIDE LEG PANTS

100% COTTON

UNBLEACHED, STONE WASH

XS S M L XL



STONE WASH

UNBLEACHED

D1- BOTTOMS

DYLAN CARGO PANT

242000114

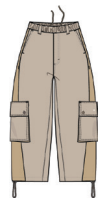
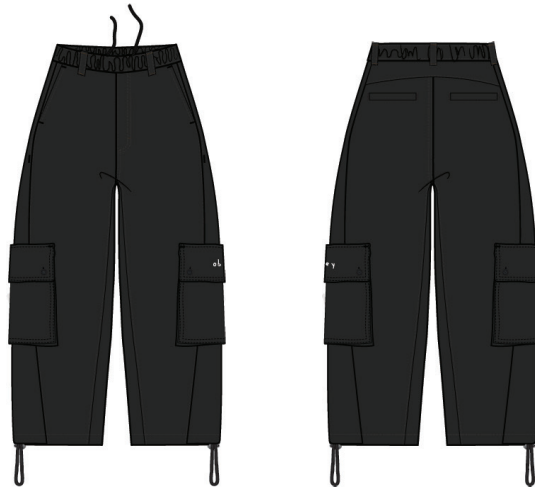
FIT: RELAXED FIT

DESCRIPTION: BIG CARGO PANTS

100% COTTON

BLACK, IRISH CREAM

XS S M L XL



IRISH CREAM

BLACK

D1- BOTTOMS

JOELLE PLEATED PRINTED CORD PANT

242020099

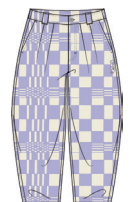
FIT: BAGGY FIT

DESCRIPTION: PRINTED PLEATED PANT WITH EMBROIDERY

100% COTTON

DUSTY JADE MULTI, DIGITAL LAVENDER MULTI

24 25 26 27 28 29 30 31 32



DIGITAL LAVENDER MULTI

DUSTY JADE MULTI

RAINE UTILITY CARGO PANT

242020096

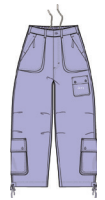
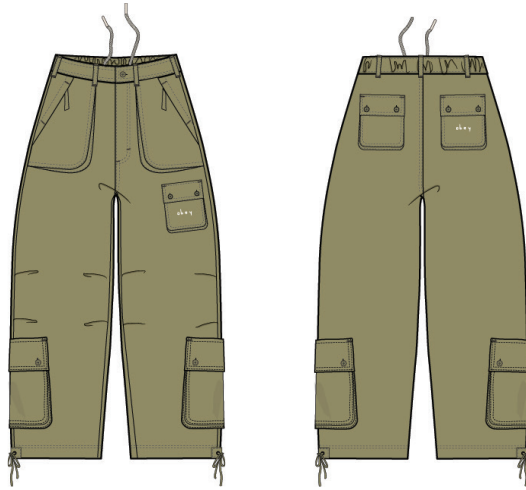
FIT: RELAXED FIT

DESCRIPTION: BIG UTILITY CARGO PANTS

100% COTTON

OLIVE OIL, DIGITAL LAVENDER

24 25 26 27 28 29 30 31 32



DIGITAL LAVENDER

OLIVE OIL

D1- BOTTOMS

ARMAND FLARED PANT

242020097

FIT: REGULAR FIT

DESCRIPTION: FLARE PANTS

100% COTTON

UNBLEACHED, SEPIA

24 25 26 27 28 29 30 31 32



SEPIA

UNBLEACHED

BABY LAMB DENIM SHORT

272100051

FIT: REGULAR FIT

DESCRIPTION: HIGH WAIST DENIM SHORTS

100% COTTON

DUSTY BLACK, BLEACHED INDIGO

24 25 26 27 28 29 30 31 32



BLEACHED INDIGO

DUSTY BLACK

D1- BOTTOMS

VANESSA SHORT

272120096

FIT: REGULAR FIT

DESCRIPTION: HIGH WAIST PLEATED SHORTS

100% COTTON

PURPLE FLOWER MULTI, SILT MULTI

24 25 26 27 28 29 30 31 32



SILT MULTI

PURPLE FLOWER MULTI

D1- BOTTOMS

JULIA DENIM SHORT

272100050

FIT: REGULAR FIT

DESCRIPTION: HIGH WAISTED DENIM SHORT

100% COTTON

BLEACHED INDIGO, SEPIA

24 25 26 27 28 29 30 31 32



SEPIA

BLEACHED INDIGO

D1- BOTTOMS

SKIRTS



REGISTRY OF
MOTOR VEHICLES
→

WASHINGTON

NO
TURN
ON RED

YIELD

FOR GREEN
OR RED

Johnson

Vietnam Res
Noodle Soup And Fine Cuisi

JUNIPER MIDI SKIRT

411550099

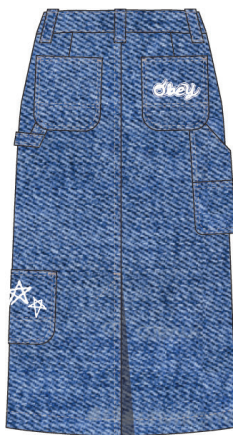
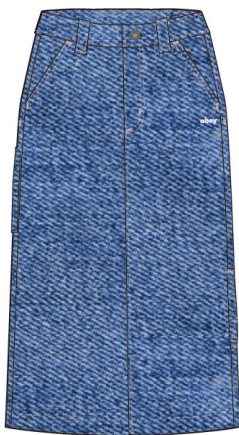
FIT: MIDI FIT

DESCRIPTION: DENIM MIDI SKIRT

100% COTTON

STONEWASH INDIGO, LIGHT INDIGO

24 25 26 27 28 29 30 31 32



LIGHT INDIGO

STONEWASH INDIGO

D1- BOTTOMS

BIBI CARPENTER SKIRT

411550100

FIT: REGULAR FIT

DESCRIPTION: CARPENTER MINI SKIRT

100% COTTON

UNBLEACHED, JADE

24 25 26 27 28 29 30 31 32



JADE

UNBLEACHED

D1- BOTTOMS

LENA MINI SKIRT

411550102

FIT: REGULAR FIT

DESCRIPTION: MINI SKIRT

100% COTTON

DARK CEDAR

24 25 26 27 28 29 30 31 32



DARK CEDAR

D1- BOTTOMS

RYAN MINI SKIRT

411550101

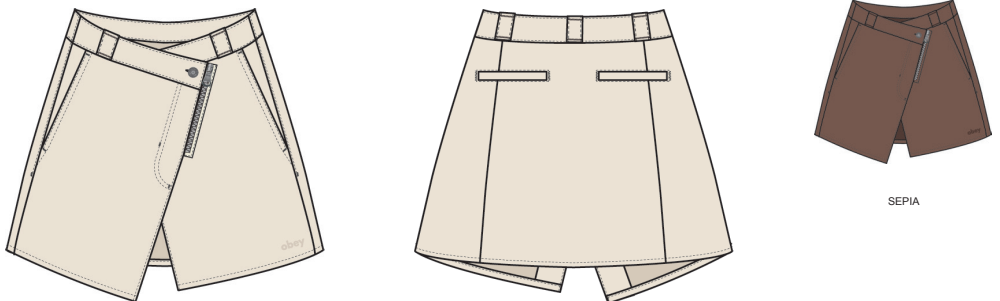
FIT: REGULAR FIT

DESCRIPTION: ASYMMETRICAL WAIST MINI SKIRT

100% COTTON

UNBLEACHED, SEPIA

24 25 26 27 28 29 30 31 32



UNBLEACHED

D1- BOTTOMS

HANA SKIRT

411550106

FIT: REGULAR FIT

DESCRIPTION: PRINTED MIDI SKIRT WITH POCKETS

100% MODAL

WHITE MULTI

XS S M L XL



WHITE MULTI

D1- BOTTOMS

DRESSES



KAISLEY SLEEVELESS DRESS

401500409

FIT: REGULAR FIT

DESCRIPTION: PRINTED SLEEVELESS RIB KNIT DRESS

100% COTTON

WHITE MULTI, PURPLE FLOWER MULTI

XS S M L XL



PURPLE FLOWER MULTI

WHITE MULTI

D1- DRESSES

MARGO BUTTERFLY DRESS

401500412

FIT: REGULAR FIT

DESCRIPTION: BUTTERFLY MINI RINGER DRESS

100% COTTON

GIN FIZZ MULTI, SEPIA MULTI

XS S M L XL



SEPIA MULTI

GIN FIZZ MULTI

D1- DRESSES

CLEO BUBBLE DRESS

401500410

FIT: REGULAR FIT

DESCRIPTION: PRINTED BUBBLE SLEEVE COLD SHOULDER MINI DRESS

100% COTTON

APRICOT PINK MULTI

XS S M L XL



APRICOT PINK MULTI

D1- DRESSES

EMILY MAXI DRESS

401500411

FIT: REGULAR FIT

DESCRIPTION: SHORT SLEEVE STAR PRINT MAXI DRESS

100% MODAL

MILD NAVY MULTI

XS S M L XL



MILD NAVY MULTI

D1- DRESSES



UNISEX

OBEY

STRAGGLER FLOODED PANT

PLEASE NOTE UNISEX STYLES ARE SIZED IN MEN'S SIZING

142020113

FIT: STANDARD FIT

DESCRIPTION: FLOODED PANT

60% COTTON 39% POLYESTER 1% SPANDEX

BLACK, SEPIA BROWN, LEAF

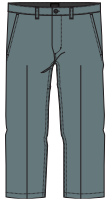
26 27 28 29 30 31 32 33 34 36 38



BLACK



SEPIA BROWN



LEAF

D1 - BOTTOMS

STRAGGLER PANT

PLEASE NOTE UNISEX STYLES ARE SIZED IN MEN'S SIZING

142020150

FIT: STANDARD FIT

DESCRIPTION: STRAIGHT LEG PANT

60% COTTON 39% POLYESTER 1% SPANDEX

SEPIA BROWN, BLACK, LEAF

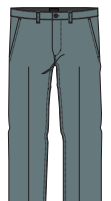
26 27 28 29 30 31 32 33 34 36 38



SEPIA BROWN



BLACK



LEAF

D1 - BOTTOMS

HARDWORK CARPENTER PANT

142020184

FIT: REGULAR FIT

DESCRIPTION: CARPENTER PANT

100% COTTON

DARK BROWN, BLACK, WHITE

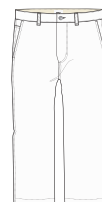
26 27 28 29 30 31 32 33 34 36 38



DARK BROWN



BLACK



WHITE

D1 - BOTTOMS

PLEASE NOTE UNISEX STYLES ARE SIZED IN MEN'S SIZING

HUGHES TWILL PANT

142020198

FIT: REGULAR FIT

DESCRIPTION: CASUAL TWILL PANT

100% COTTON

DULL BLUE, BLACK, FIELD GREEN

26 27 28 29 30 31 32 33 34 36 38



DULL BLUE



BLACK



FIELD GREEN

D1 - BOTTOMS

PLEASE NOTE UNISEX STYLES ARE SIZED IN MEN'S SIZING

FUBAR PLEATED PANT

PLEASE NOTE UNISEX STYLES ARE SIZED IN MEN'S SIZING

142020201

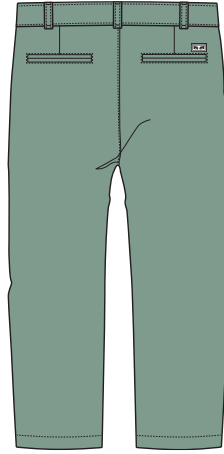
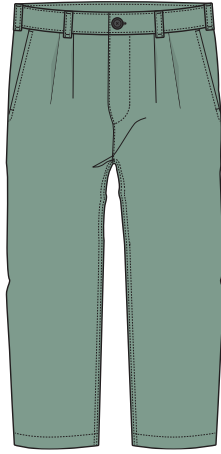
FIT: RELAXED FIT

DESCRIPTION: RELAXED FIT PLEATED PANTS

60% POLY 40% RAYON

JADE, BLACK, SEPIA

26 27 28 29 30 31 32 33 34 36 38



BLACK



SEPIA

JADE

D1 - BOTTOMS

ESTATE PANT

PLEASE NOTE UNISEX STYLES ARE SIZED IN MEN'S SIZING

142020183

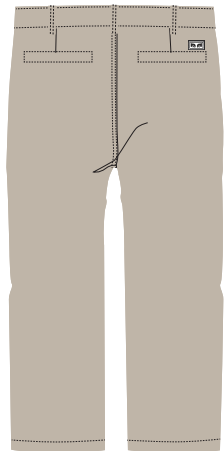
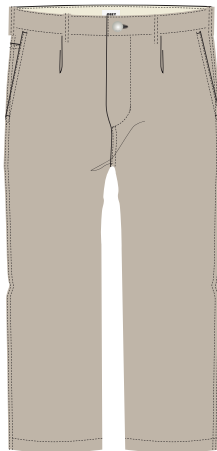
FIT: RELAXED FIT

DESCRIPTION: HEAVYWEIGHT TWILL PANT WITH SINGLE PLEAT FRONT

100% COTTON

IRISH CREAM, BLACK, DARK BROWN

26 27 28 29 30 31 32 33 34 36 38



BLACK



DARK BROWN

IRISH CREAM

D1 - BOTTOMS

ESTATE EMBROIDERY PANT

PLEASE NOTE UNISEX STYLES ARE SIZED IN MEN'S SIZING

142020210

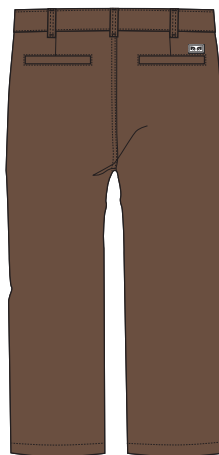
FIT: RELAXED FIT

DESCRIPTION: PLEATED TWILL PANT WITH OBEY EMBROIDERY

100% COTTON

DARK BROWN, BLACK, IRISH CREAM

26 27 28 29 30 31 32 33 34 36 38



BLACK



IRISH CREAM

DARK BROWN

D1 - BOTTOMS

BIG TIMER DOUBLE KNEE CARPENTER PANT

PLEASE NOTE UNISEX STYLES ARE SIZED IN MEN'S SIZING

142020211

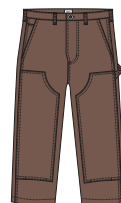
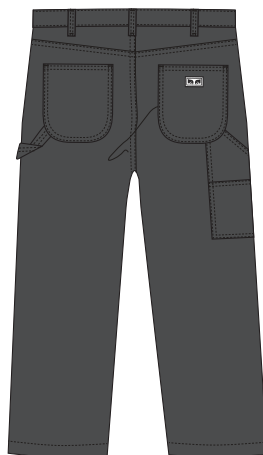
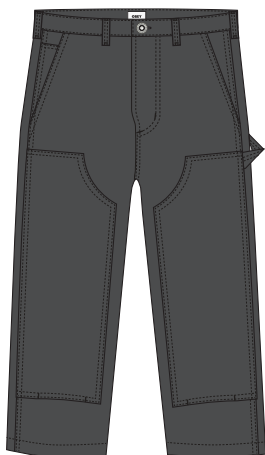
FIT: RELAXED FIT

DESCRIPTION: DOUBLE KNEE WORK PANTS WITH PATCH POCKETS

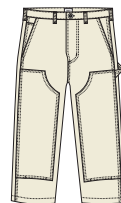
100% COTTON

BLACK, SEPIA, UNBLEACHED

26 27 28 29 30 31 32 33 34 36 38



SEPIA



UNBLEACHED

BLACK

D1 - BOTTOMS

BIG TIMER EMBROIDERED CORD PANT

PLEASE NOTE UNISEX STYLES ARE SIZED IN MEN'S SIZING

142020212

FIT: RELAXED FIT

DESCRIPTION: CORDUROY CARPENTER PANT WITH EMBROIDERY

100% COTTON

IRISH CREAM, DARK CEDAR

26 27 28 29 30 31 32 33 34 36 38



DARK CEDAR

IRISH CREAM

D1 - BOTTOMS

EASY TWILL PANT

PLEASE NOTE UNISEX STYLES ARE SIZED IN MEN'S SIZING

142020142

FIT: RELAXED FIT

DESCRIPTION: ELASTIC WAIST TWILL PANT

100% COTTON

IRISH CREAM, BLACK, FIELD GREEN

XS S M L XL XXL



BLACK



FIELD GREEN

IRISH CREAM

D1 - BOTTOMS

EASY RIPSTOP CARGO PANT

142020196

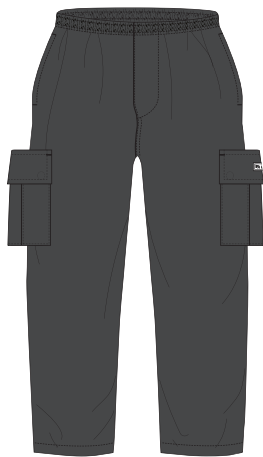
FIT: RELAXED FIT

DESCRIPTION: ELASTIC WAIST RIPSTOP CARGO PANT

100% COTTON

BLACK, FIELD GREEN, DARK BROWN

XS S M L XL XXL



BLACK



FIELD GREEN



DARK BROWN

D1 - BOTTOMS

PLEASE NOTE UNISEX STYLES ARE SIZED IN MEN'S SIZING

EASY CORD PANT

142020195

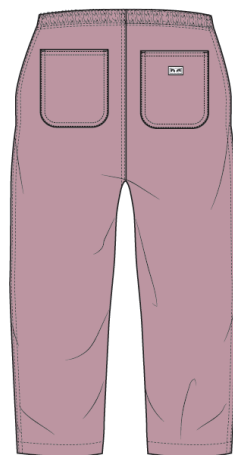
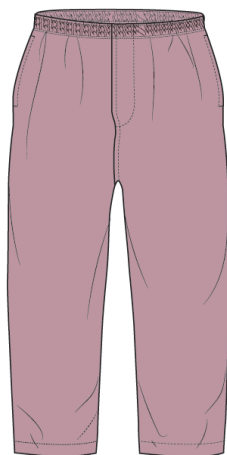
FIT: RELAXED FIT

DESCRIPTION: WIDE WALE ELASTIC CORDUROY PANT

100% COTTON

VINTAGE PINK, DARK CEDAR, SEPIA, IRISH CREAM

XS S M L XL XXL



VINTAGE PINK



DARK CEDAR



SEPIA



IRISH CREAM

D1 - BOTTOMS

BIG EASY CANVAS PANT

14202023

FIT: RELAXED FIT

DESCRIPTION: ELASTIC WAIST DOUBLE KNEE CANVAS PANT

100% COTTON

SMOKEY OLIVE, DARK BROWN, UNBLEACHED

XS S M L XL XXL

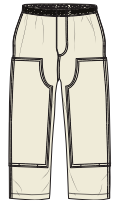
PLEASE NOTE UNISEX STYLES ARE SIZED IN MEN'S SIZING



SMOKEY OLIVE



DARK BROWN



UNBLEACHED

D1 - BOTTOMS

RAPTURE ZIP OFF CARGO PANT

14202029

FIT: RELAXED FIT

DESCRIPTION: NYLON ZIP OFF CARGO PANT

100% NYLON

BLACK, FIELD GREEN

XS S M L XL XXL

PLEASE NOTE UNISEX STYLES ARE SIZED IN MEN'S SIZING



BLACK



FIELD GREEN

D1 - BOTTOMS

HARDWORK DENIM

142010077

FIT: RELAXED FIT

DESCRIPTION: RELAXED FIT BUTTON FLY DENIM WITH EYES LABELING

100% COTTON

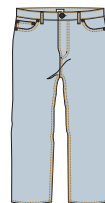
STONEWASH INDIGO, LIGHT INDIGO, FADED BLACK

26 27 28 29 30 31 32 33 34 36 38

PLEASE NOTE UNISEX STYLES ARE SIZED IN MEN'S SIZING



STONEWASH INDIGO



LIGHT INDIGO



FADED BLACK

D1 - DENIM COLLECTION

HARDWORK CARPENTER DENIM

142010078

FIT: RELAXED FIT

DESCRIPTION: DENIM CARPENTER PANT

100% COTTON

LIGHT INDIGO, STONEWASH INDIGO

26 27 28 29 30 31 32 33 34 36 38

PLEASE NOTE UNISEX STYLES ARE SIZED IN MEN'S SIZING



LIGHT INDIGO



STONEWASH INDIGO

D1 - DENIM COLLECTION

BENDER DENIM

142010080

FIT: STANDARD FIT

DESCRIPTION: STANDARD FIT 5 POCKET DENIM

100% COTTON

FADED BLACK, STONEWASH INDIGO, LIGHT INDIGO

26 27 28 29 30 31 32 33 34 36 38

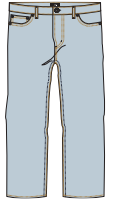
PLEASE NOTE UNISEX STYLES ARE SIZED IN MEN'S SIZING



FADED BLACK



STONEWASH INDIGO



LIGHT INDIGO

D1 - DENIM COLLECTION

FUBAR PLEATED DENIM

142010082

FIT: RELAXED FIT

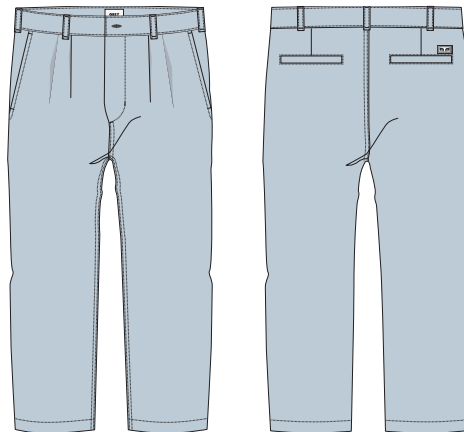
DESCRIPTION: RELAXED FIT DENIM PANTS

100% COTTON

LIGHT INDIGO, FADED BLACK

26 27 28 29 30 31 32 33 34 36 38

PLEASE NOTE UNISEX STYLES ARE SIZED IN MEN'S SIZING



LIGHT INDIGO



FADED BLACK

D1 - DENIM COLLECTION

EASY DENIM PANT

142010079

FIT: RELAXED FIT

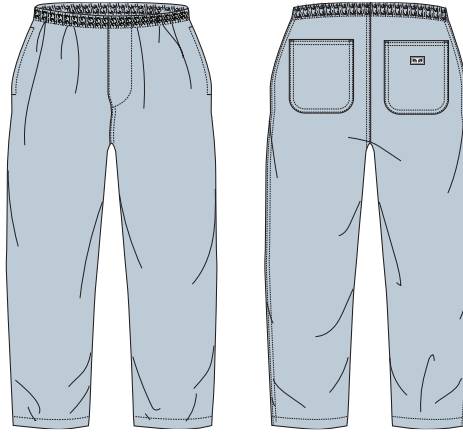
DESCRIPTION: ELASTIC WAIST PATCH POCKET DENIM PANT

100% COTTON

LIGHT INDIGO, FADED BLACK

XS S M L XL XXL

PLEASE NOTE UNISEX STYLES ARE SIZED IN MEN'S SIZING



FADED BLACK

LIGHT INDIGO

D1 - DENIM COLLECTION

BIGWIG BAGGY DENIM

142010087

FIT: BAGGY FIT

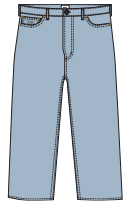
DESCRIPTION: BAGGY FIT 5 POCKET DENIM

100% COTTON

STONEWASH INDIGO, LIGHT INDIGO

26 27 28 29 30 31 32 33 34 36 38

PLEASE NOTE UNISEX STYLES ARE SIZED IN MEN'S SIZING



LIGHT INDIGO

STONEWASH INDIGO

D1 - DENIM COLLECTION

BIGWIG KINGPIN BAGGY DENIM

PLEASE NOTE UNISEX STYLES ARE SIZED IN MEN'S SIZING

142010090

FIT: BAGGY FIT

DESCRIPTION: BAGGY FIT 5 POCKET DENIM

100% COTTON

LIGHT INDIGO, FADED BLACK

26 27 28 29 30 31 32 33 34 36 38



FADED BLACK

LIGHT INDIGO

D1 - DENIM COLLECTION

BIGWIG CARGO DENIM

PLEASE NOTE UNISEX STYLES ARE SIZED IN MEN'S SIZING

142010088

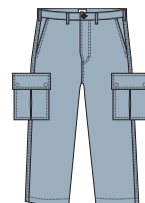
FIT: RELAXED FIT

DESCRIPTION: BAGGY FIT DENIM CARGO PANT WITH EMBROIDERY

100% COTTON

STONEWASH INDIGO, LIGHT INDIGO

26 27 28 29 30 31 32 33 34 36 38



LIGHT INDIGO

STONEWASH INDIGO

D1 - DENIM COLLECTION

A black and white photograph of a narrow hallway. On the left side, there is a complex structure of metal scaffolding. The right wall is covered in a grid of stylized, high-contrast faces, possibly a mural or a wall of posters. The ceiling is dark with some pipes and a single light fixture. In the background, a sign with the word 'HEADWEAR' is visible. The overall atmosphere is industrial and artistic.

HEADWEAR

OBEY BOLD PEACE SIGN STRAP BACK HAT

200140147

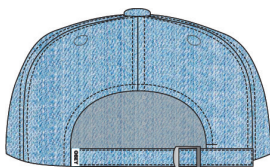
FIT: CLASSIC FIT

DESCRIPTION: STRAP BACK HAT WITH OBEY BOLD LOGO EMBROIDERY

100% COTTON

LIGHT INDIGO, UNBLEACHED

O/S



UNBLEACHED

LIGHT INDIGO

D1 - HEADWEAR

RUE STRAP BACK HAT

200140150

FIT: CLASSIC FIT

DESCRIPTION: PLACED EMBROIDERY STRAP BACK CORDUROY HAT

100% COTTON

BLACK

O/S



BLACK

D1 - HEADWEAR

CHERUBS BUCKET HAT

200520022

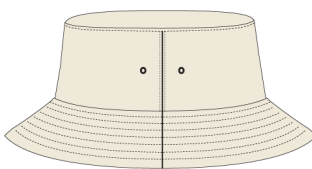
FIT: CLASSIC FIT

DESCRIPTION: EMBROIDERED BUCKET HAT

90% POLYESTER 10% NYLON

UNBLEACHED, LAVENDER FIELDS

O/S



LAVENDER FIELDS

UNBLEACHED

D1 - HEADWEAR

BRIELLE SWEATER KNIT BUCKET HAT

200520023

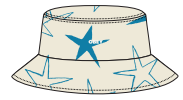
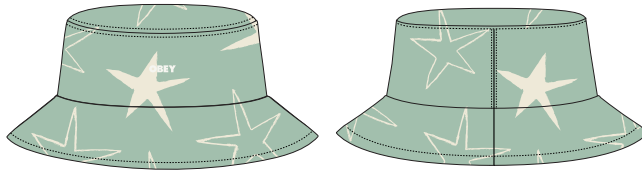
FIT: CLASSIC FIT

DESCRIPTION: SWEATER KNIT BUCKET HAT

100% COTTON

GREEN FIG MULTI, UNBLEACHED MULTI

O/S



UNBLEACHED MULTI

GREEN FIG MULTI

D1 - HEADWEAR



SOCKS

COOP SOCK

200260070

DESCRIPTION: SOCK WITH CUSTOM OBEY JACQUARD STRIPES AND LOGO

CONTENT: 85% COTTON 13% POLY 2% ELASTANE

WHITE / DIGITAL LAVENDER, WHITE / BLACK, WHITE CELERY JUICE

O/S



WHITE / DIGITAL LAVENDER



WHITE / BLACK



WHITE / CELERY JUICE

D1 - SOCKS

OBEY CHERUBS SOCKS

200260084

DESCRIPTION: SOCK WITH CUSTOM OBEY JACQUARD STRIPES AND LOGO

CONTENT: 85% COTTON 13% POLY 2% ELASTANE

CELERY JUICE, PURPLE FLOWER, WHITE MULTI

O/S



CELERY JUICE



PURPLE FLOWER



WHITE MULTI

D1 - SOCKS



BAGS

WASTED HIP BAG

100010098

DESCRIPTION: SMALL HIP BAG

100% COTTON TWILL

DENIM, BLACK

O/S



DENIM



BLACK TWILL

D1 - BAGS

COMMUTER WAIST BAG

100010126

DESCRIPTION: TECHNICAL WAIST BAG WITH MULTIPLE POCKETS, COMPRESSION STRAPS, AND PVC PATCH

100% POLYESTER

PURPLE MULTI, BLACK

O/S



PURPLE MULTI



BLACK

D1 - BAGS

CONDITIONS TRAVELER BAG III

100010135

DESCRIPTION: SHOULDER BAG WITH MULTIPLE POCKETS AND PVC PATCH

100% POLYESTER

BLACK, PURPLE MULTI

O/S



BLACK



PURPLE MULTI

D1 - BAGS

UPSHOT TOTE BAG

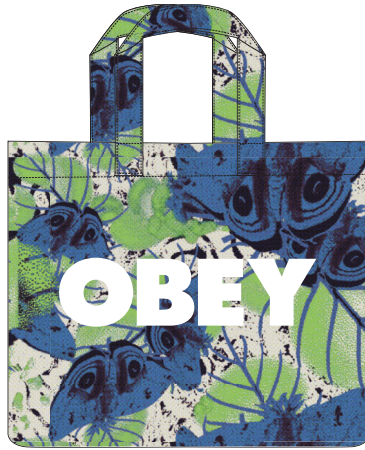
100010146

DESCRIPTION: PVC TOTA BAG WITH POPLIN UNDERLAY, INTERIOR POCKET AND SCREENPRINT

CONTENT: 100% COTTON POPLIN

UNBLEACHED MULTI

0/S



UNBLEACHED MULTI

D1 - TOTE BAG

ACCESSORIES



BIG BOY WEB BELT

100050026

DESCRIPTION: ADJUSTABLE WEB BELT WITH SILVER HARDWARE AND A OBEY EYE LABEL

60% COTTON / 40% POLYESTER

BLACK, UNBLEACHED, LAVENDER SILK

O/S



UNBLEACHED



LAVENDER SILK

BLACK

D1 - ACCESSORIES

OBEY WAVY BELT

100050037

DESCRIPTION: ADJUSTABLE WEB BELT WITH SILVER HARDWARE AND A OBEY EYE LABEL

60% COTTON / 40% POLYESTER

UNBLEACHED MULTI, BLACK MULTI

O/S



BLACK MULTI

UNBLEACHED MULTI

D1 - ACCESSORIES

OBEY SNAKE DRESS BELT

100050036

PLEASE NOTE UNISEX STYLES ARE SIZED IN MEN'S SIZING

DESCRIPTION: EMBOSSED FAUX SNAKE SKIN PRINT BELT WITH PU BACKING AND ENGRAVED METAL BUCKLE AND END TIP

50% POLYESTER 50% PU

TAN

S/M, L/XL



TAN

D1 - ACCESSORIES

OBEY ICON AIR FRESHENER

100680003

DESCRIPTION: PRINTED AIR FRESHENER WITH PINE SCENT

100% PAPER

BLACK MULTI

O/S

*PINE SCENT



BLACK MULTI

D1 - ACCESSORIES

OBEY CHERUBS AIR FRESHENER

100680010

DESCRIPTION: PRINTED AIR FRESHENER WITH PINE SCENT

100% PAPER

BLACK MULTI

O/S

*PINE SCENT



BLACK MULTI

D1 - ACCESSORIES

OBEY ICON METAL KEYCHAIN

100160021

DESCRIPTION: METAL KEYCHAIN WITH ICON

100% METAL

WHITE

O/S



WHITE

D1 - ACCESSORIE

OBEY ICON DRINKING GLASS

100040000

DESCRIPTION: DRINKING GLASS WITH PRINT

100% GLASS

CLEAR

O/S



CLEAR

D1 - ACCESSORIES

OBEY ICON MUG

100630005

DESCRIPTION: PRINTED ICON MUG

100% CERAMIC

WHITE

O/S



WHITE

D1 - ACCESSORIES

STICKER PACK 5

100270012

DESCRIPTION: ASSORTED STICKERS FOR THE OBEY FIENDS. SPREAD IT! (STICKERS MAY VARY FROM CATALOG PHOTO)

ASSORTED

O/S



ASSORTED

D1 - ACCESSORIES

STICKER PACK 2

100270001

DESCRIPTION: ASSORTED STICKERS FOR THE OBEY FIENDS. SPREAD IT! (STICKERS MAY VARY FROM CATALOG PHOTO)

ASSORTED

O/S



ASSORTED

D1 - ACCESSORIES

OBEY BOLD

326002349

DESCRIPTION: CORK BLOCK WITH BOLD OBEY PRINT

100% CORK

O/S

* THIS ITEM IS POP, AND INTENDED TO BE USED IN STORE DISPLAY. NOT FOR RESALE



CORK

D1 - POP

LARGE ICON FACE FRAMED PRINT

326000174

DESCRIPTION: FRAMED PRINT

ASSORTED

O/S

* THIS ITEM IS POP, AND INTENDED TO BE USED IN STORE DISPLAY. NOT FOR RESALE



ASSORTED

D1 - POP

PRINTABLES



AL
ED

WE'RE MIGHTY SWEET 2

263772377

DESCRIPTION: CONTRAST BINDING RIB TANK TOP

CONTENT: 100% COTTON RIB

SKY BLUE, PURPLE FLOWER

XS S M L XL



SKY BLUE



PURPLE FLOWER

D1 - NORA CONTRAST RIB TANK

BUTTERFLY AND THORNS

263772374

DESCRIPTION: CONTRAST BINDING RIB TANK TOP

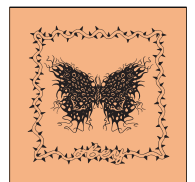
CONTENT: 100% COTTON RIB

PURPLE FLOWER, PAPAYA SMOOTHIE

XS S M L XL



PURPLE FLOWER



PAPAYA SMOOTHIE

D1 - NORA CONTRAST RIB TANK

OBEY BLOCKS

263722358

DESCRIPTION: SPAGHETTI STRAP CROPPED TANK TOP

CONTENT: 100% COTTON

TERRACOTTA, SKY BLUE

XS S M L XL



TERRACOTTA



SKY BLUE

D1 - SPAGHETTI STRAP CROP

OBEY LOVE SUNSHINE

263722375

DESCRIPTION: SPAGHETTI STRAP CROPPED TANK TOP

CONTENT: 100% COTTON

PEACH SAND, TERRACOTTA

XS S M L XL



PEACH SAND



TERRACOTTA

D1 - SPAGHETTI STRAP CROP

OBEY BUNNY RABBIT 2

263722376

DESCRIPTION: SPAGHETTI STRAP CROPPED TANK TOP

CONTENT: 100% COTTON

SKY BLUE, TERRACOTTA

XS S M L XL



SKY BLUE



TERRACOTTA

D1 - SPAGHETTI STRAP CROP

OBEY YOUR HEART

263732354

DESCRIPTION: FITTED RIB TANK

CONTENT: 100% COTTON RIB

UNBLEACHED, TERRACOTTA

XS S M L XL



TERRACOTTA

UNBLEACHED

D1 - RIB MEGAN TANK

OBEY WATERING CAN CHERUB

263732378

DESCRIPTION: FITTED RIB TANK

CONTENT: 100% COTTON RIB

PURPLE FLOWER, UNBLEACHED

XS S M L XL



UNBLEACHED

PURPLE FLOWER

D1 - RIB MEGAN TANK

OBEY GRAFFITI EYES

263732368

DESCRIPTION: FITTED RIB TANK

CONTENT: 100% COTTON RIB

TERRACOTTA, GREEN FIG

XS S M L XL



TERRACOTTA



GREEN FIG

D1 - RIB MEGAN TANK

OBEY LOWER CASE 2

263743411

DESCRIPTION: CROPPED RIB FITTED TEE WITH A LETTUCE EDGE

CONTENT: 100% COTTON RIB

DIGITAL LAVENDER, CELERY JUICE

XS S M L XL



DIGITAL LAVENDER



CELERY JUICE

D1 - CROPPED EMMA FITTED TEE

OBEY FROG

263742372

DESCRIPTION: CROPPED RIB FITTED TEE WITH A LETTUCE EDGE

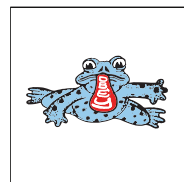
CONTENT: 100% COTTON RIB

CELERY JUICE, WHITE

XS S M L XL



CELERY JUICE



WHITE

D1 - CROPPED EMMA FITTED TEE

OBEY EYES DALMATION

263742373

DESCRIPTION: CROPPED RIB FITTED TEE WITH A LETTUCE EDGE

CONTENT: 100% COTTON RIB

PEACH SAND, WHITE

XS S M L XL



PEACH SAND



WHITE

D1 - CROPPED EMMA FITTED TEE

BUTTERFLY AND THORNS

263742374

DESCRIPTION: CROPPED RIB FITTED TEE WITH A LETTUCE EDGE

CONTENT: 100% COTTON RIB

WHITE, DIGITAL LAVENDER

XS S M L XL



WHITE



DIGITAL LAVENDER

D1 - CROPPED EMMA FITTED TEE

OBEY GRAFFITI EYES

263782368

DESCRIPTION: CROPPED FITTED TEE

CONTENT: 100% COTTON

SILT, PINK CLAY, GREEN FIG

XS S M L XL



SILT



PINK CLAY



GREEN FIG

D1 - CROPPED CHLOE FITTED TEE

OBEY GRAFFITI TEDDY BEAR

263782369

DESCRIPTION: CROPPED FITTED TEE

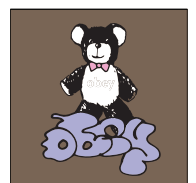
CONTENT: 100% COTTON

WHITE, SILT

XS S M L XL



WHITE



SILT

D1 - CROPPED CHLOE FITTED TEE

OBEY ICON FLOWER

263782370

DESCRIPTION: CROPPED FITTED TEE

CONTENT: 100% COTTON

GREEN FIG, WHITE

XS S M L XL



GREEN FIG



WHITE

D1 - CROPPED CHLOE FITTED TEE

OBEY WATERING CAN CHERUB

263782371

DESCRIPTION: CROPPED FITTED TEE

CONTENT: 100% COTTON

PINK CLAY, WHITE

XS S M L XL



PINK CLAY



WHITE

D1 - CROPPED CHLOE FITTED TEE

OBEY BUTTERFLY

263452364

DESCRIPTION: PIGMENT CHOICE BOX TEE

CONTENT: 100% COTTON

OPAL, RABBITS PAW, CUCUMBER

XS S M L XL



OPAL



RABBITS PAW



CUCUMBER

D1 - PIGMENT CHOICE BOX TEE

OBEY WEEDS

263452365

DESCRIPTION: PIGMENT CHOICE BOX TEE

CONTENT: 100% COTTON

PINK CLAY, OPAL

XS S M L XL



PINK CLAY



OPAL

D1 - PIGMENT CHOICE BOX TEE

OBEY BIRD FLOCK

263452366

DESCRIPTION: PIGMENT CHOICE BOX TEE

CONTENT: 100% COTTON

CUCUMBER, SAGO

XS S M L XL



CUCUMBER



SAGO

D1 - PIGMENT CHOICE BOX TEE

OBEY FLOWER PAINTING

263452367

DESCRIPTION: PIGMENT CHOICE BOX TEE

CONTENT: 100% COTTON

SAGO, PINK CLAY

XS S M L XL



SAGO



PINK CLAY

D1 - PIGMENT CHOICE BOX TEE

OBEY BLOCKS

267622358

DESCRIPTION: HEAVYWEIGHT BOX FIT CROP T-SHIRT

CONTENT: 100% COTTON

OFF BLACK, PURPLE FLOWER

XS S M L XL



PURPLE FLOWER

OFF BLACK

D1 - CUSTOM CROP TEE

OBEY CARTOON FLOWER

267622359

DESCRIPTION: HEAVYWEIGHT BOX FIT CROP T-SHIRT

CONTENT: 100% COTTON

FUCHSIA, SUN DIAL

XS S M L XL



SUN DIAL

FUCHSIA

D1 - CUSTOM CROP TEE

WE'RE MIGHTY SWEET

267622360

DESCRIPTION: HEAVYWEIGHT BOX FIT CROP T-SHIRT

CONTENT: 100% COTTON

WHITE, FUCHSIA

XS S M L XL



WHITE



FUCHSIA

D1 - CUSTOM CROP TEE

OBEY BUNNY RABBIT

267622361

DESCRIPTION: HEAVYWEIGHT BOX FIT CROP T-SHIRT

CONTENT: 100% COTTON

DARK TEAL, OFF BLACK

XS S M L XL



DARK TEAL



OFF BLACK

D1 - CUSTOM CROP TEE

OBEY CAT IN THE STARS

267622362

DESCRIPTION: HEAVYWEIGHT BOX FIT CROP T-SHIRT

CONTENT: 100% COTTON

PURPLE FLOWER, WHITE

XS S M L XL



PURPLE FLOWER



WHITE

D1 - CUSTOM CROP TEE

OBEY FLOWER FRAME

267622363

DESCRIPTION: HEAVYWEIGHT BOX FIT CROP T-SHIRT

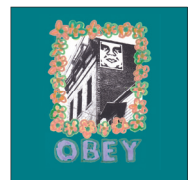
CONTENT: 100% COTTON

SUN DIAL, DARK TEAL

XS S M L XL



SUN DIAL



DARK TEAL

D1 - CUSTOM CROP TEE

OBEY BLACK BAR

166912615

DESCRIPTION: HEAVYWEIGHT BOX FIT T-SHIRT

CONTENT: 100% COTTON

CELERY JUICE, PALM LEAF, PURPLE FLOWER

XS S M L XL XXL

PLEASE NOTE UNISEX STYLES ARE SIZED IN MEN'S SIZING



CELERY JUICE



PALM LEAF



PURPLE FLOWER

D1 - HEAVYWEIGHT TEE

OBEY EYES ICON 2

166912142

DESCRIPTION: HEAVYWEIGHT BOX FIT T-SHIRT

CONTENT: 100% COTTON

OFF BLACK, SKY BLUE

XS S M L XL XXL

PLEASE NOTE UNISEX STYLES ARE SIZED IN MEN'S SIZING



OFF BLACK



SKY BLUE

D1 - HEAVYWEIGHT TEE

OBEY POODLE AND STARS

166913493

DESCRIPTION: HEAVYWEIGHT BOX FIT T-SHIRT

CONTENT: 100% COTTON

SKY BLUE, UNBLEACHED

XS S M L XL XXL



PLEASE NOTE UNISEX STYLES ARE SIZED IN MEN'S SIZING



UNBLEACHED

SKY BLUE

D1 - HEAVYWEIGHT TEE

OBEY YOUR HEART

166912354

DESCRIPTION: HEAVYWEIGHT BOX FIT T-SHIRT

CONTENT: 100% COTTON

UNBLEACHED, CELERY JUICE

XS S M L XL XXL



PLEASE NOTE UNISEX STYLES ARE SIZED IN MEN'S SIZING



CELERY JUICE

UNBLEACHED

D1 - HEAVYWEIGHT TEE

ALWAYS ON THE MOVE!

166913494

DESCRIPTION: HEAVYWEIGHT BOX FIT T-SHIRT

CONTENT: 100% COTTON

SUN DIAL, SILT

XS S M L XL XXL



SILT

SUN DIAL

D1 - HEAVYWEIGHT TEE

PLEASE NOTE UNISEX STYLES ARE SIZED IN MEN'S SIZING

OBEY WHAT WE WANT IS PEACE

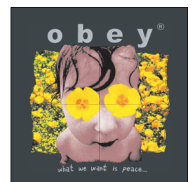
166912356

DESCRIPTION: HEAVYWEIGHT BOX FIT T-SHIRT

CONTENT: 100% COTTON

PURPLE FLOWER, OFF BLACK

XS S M L XL XXL



OFF BLACK

PURPLE FLOWER

D1 - HEAVYWEIGHT TEE

PLEASE NOTE UNISEX STYLES ARE SIZED IN MEN'S SIZING

OBEY FAIRY AND THE FROG

PLEASE NOTE UNISEX STYLES ARE SIZED IN MEN'S SIZING

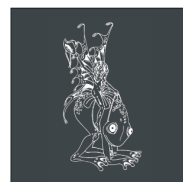
166912357

DESCRIPTION: HEAVYWEIGHT BOX FIT T-SHIRT

CONTENT: 100% COTTON

PALM LEAF, OFF BLACK

XS S M L XL XXL



OFF BLACK

PALM LEAF

D1 - HEAVYWEIGHT TEE

OBEY FAIRYTALE FOREST

PLEASE NOTE UNISEX STYLES ARE SIZED IN MEN'S SIZING

166913492

DESCRIPTION: HEAVYWEIGHT BOX FIT T-SHIRT

CONTENT: 100% COTTON

SILT, SUN DIAL

XS S M L XL XXL



SUN DIAL

SILT

D1 - HEAVYWEIGHT TEE