

OBÉY

SUMMER 2018

Visceral Fear
Dubious Care

STOP PRESS

WITNESSES

YOU ARE NOT
WELCOME
HERE

San Francisco
New York
London
Paris

MEN'S COLLECTION

warn Europe of terror threat

Oil change reignites
debate over trade
US Museum holds FBI



FROM ACROSS THE WORLD

Welcome
VISITORS!

WITH A FEW EXCEPTIONS!

THE OBEY CAMPAIGN CAN BE EXPLAINED AS AN EXPERIMENT IN PHENOMENOLOGY. THE FIRST AIM OF PHENOMENOLOGY IS TO REAWAKEN A SENSE OF WONDER ABOUT ONE'S ENVIRONMENT. THE OBEY CAMPAIGN ATTEMPTS TO STIMULATE CURIOSITY AND BRING PEOPLE TO QUESTION BOTH THE CAMPAIGN AND THEIR RELATIONSHIP WITH THEIR SURROUNDINGS. BECAUSE PEOPLE ARE NOT USED TO SEEING ADVERTISEMENTS OR PROPAGANDA FOR WHICH THE MOTIVE IS NOT OBVIOUS, FREQUENT AND NOVEL ENCOUNTERS WITH OBEY PROPAGANDA PROVOKE THOUGHT AND POSSIBLE FRUSTRATION, NEVERTHELESS REVITALIZING THE VIEWER'S PERCEPTION AND ATTENTION TO DETAIL. TO CATALYZE A THOUGHTFUL DIALOGUE DECONSTRUCTING THE PROCESS OF IMAGE ABSORPTION IS THE ULTIMATE GOAL. ALL IN THE NAME OF FUN AND OBSERVATION.

THE MEDIUM IS THE MESSAGE.



17462 VON KARMAN AVE.
IRVINE, CA 92614
U.S.A.
PHONE 949.596.8400 / FAX 949.596.8437
WWW.OBEYCLOTHING.COM
WWW.OBEYGiant.COM

SALES REPRESENTATIVES

PACIFIC NORTHWEST

BURL DARDEN
64171 TUMALO RIM DRIVE
BEND, OR 97701
P: 541.385.3302 / F: 541.385.3302
E: BURL@OBEYCLOTHING.COM

LEVI CAMPBELL
2039 SE 29TH AVE.
PORTLAND, OR 97214
P: 360.510.6811
E: LEVI@OBEYCLOTHING.COM

LOS ANGELES

ERIC GIRALDI
17462 VON KARMAN AVE.
IRVINE, CA 92614
C: 516.356.7323 / P: 949.596.8400 X350
E: ERICG@OBEYCLOTHING.COM

ORANGE COUNTY / SAN DIEGO

MARK MAZZA
20091 SHOREWOOD CIRCLE
HUNTINGTON BEACH, CA 92649
C: 714.614.7901 / F: 714.964.3676
E: MDMSALES@ME.COM

HAWAII / GUAM

NOEL MARCHAN
95-1038 AINAMAKUA DR. #H
MILILANI, HI 96789
P: 808.676.5290
E: NMARCHAN@AOL.COM

NOR CAL, NEVADA

ARIZONA, NEW MEXICO

JENNIFER L. ZWEIG
8161 SKYLINE BLVD.
OAKLAND, CA 94611
C: 510.388.4418
E: JLZ@OBEYCLOTHING.COM

MIDWEST

LAURA KARELS
13816 SHIRLEY DR.
BURNSVILLE, MN 55337
P: 952.461.4218 / F: 952.461.4219
E: LAURA_KARELS@YAHOO.COM

NORTHEAST / MID ATLANTIC

ERIC GIRALDI
17462 VON KARMAN AVE.
IRVINE, CA 92614
C: 516.356.7323 / P: 949.596.8400 X350
E: ERICG@OBEYCLOTHING.COM

SOUTHEAST

ANDREW MERCIER
10777 BISHOPVILLE RD.
BISHOPVILLE, MD 21813
C: 443.614.4422
E: MERCIER@OBEYCLOTHING.COM

INTERNATIONAL

NICK LHOTSKY
17462 VON KARMAN AVE.
IRVINE, CA 92614 U.S.A.
P: 949.596.8400 X263 / C: 443.373.3283
F: 949.596.8437
E: NICK@OBEYCLOTHING.COM

TABLE OF CONTENTS

4 FEATURE: LISBON	80 BEANIES	116 HEAVYWEIGHT HOCKEY JERSEY
14 FAIR TRADE	82 LEATHER ACCESSORIES	117 HEAVYWEIGHT SPORTS SHORT
16 89 GROUP	84 BAGS & ACCESSORIES	119 CUSTOM HEAVYWEIGHT PIGMENT TEE
20 HARD WORK OVERDYED GROUP	87 BELTS & TOTES	121 CUSTOM HEAVYWEIGHT PIGMENT LONG SLEEVE TEE
22 BIG BOY PANTS	88 SOCKS	123 BLEACH TIE DYE TEE
30 DENIM	89 PINS	124 BLEACH TIE DYE LONG SLEEVE TEE
38 DENIM FIT GUIDE	91 ESSENTIALS	127 SUPERIOR TEE
40 WOVENS	92 P.O.P.	128 SUPERIOR TEE
44 KNITS	94 AWARENESS	129 SUPERIOR PIGMENT TEE
50 SHORTS	96 ARTIST SERIES: NEVER MADE	130 PREMIUM CONTRAST TEE
57 PANTS	101 PREMIUM / BASIC TEES	131 PREMIUM POCKET TEE
68 PANTS FIT GUIDE	112 BASIC LONG SLEEVE TEES	132 PRINTABLE FIT GUIDE
72 HEADWEAR	115 HEAVYWEIGHT CLASSIC BOX TEE	



OBEY IN LISBON

The crew and I just returned from Lisbon, Portugal where I opened a show at Underdogs Gallery and painted three murals including a collaboration with Vhils, who is one of my favorite artists and the owner of the Underdogs Gallery. For anyone who hasn't been there, and this was my first time, Lisbon is an extraordinarily beautiful city. The architecture, the cobblestone streets, the ceramic tiles, and the wrought iron balconies have more than enough charm by themselves to be a great reason to visit Lisbon. When you add the contemporary murals, many of which have been facilitated by the Underdogs crew, Lisbon is a must-see for any connoisseur of aesthetics throughout the ages. We were lucky to be met with great weather, and the murals came together pretty quickly thanks to the hard work of my crew Dan Flores, Rob Zagula, and Nicholas Bowers.

Since we finished quickly, it was useful to have a little bit of time to refine the collaboration with Vhils which was a very fun, organic process where I painted my half of the mural and some background elements for his half, and he then chiseled his portrait including a small amount of overlap with my image. I love Vhils's work because of the texture and depth but also because I like the idea of creation and destruction occurring simultaneously. Our mural features two women merging who are from different cultural backgrounds but have a common humanity. I think the aesthetics and the concept of the mural came together powerfully and I'm proud and honored to collaborate with Vhils, who I think does beautiful and thoughtful work.

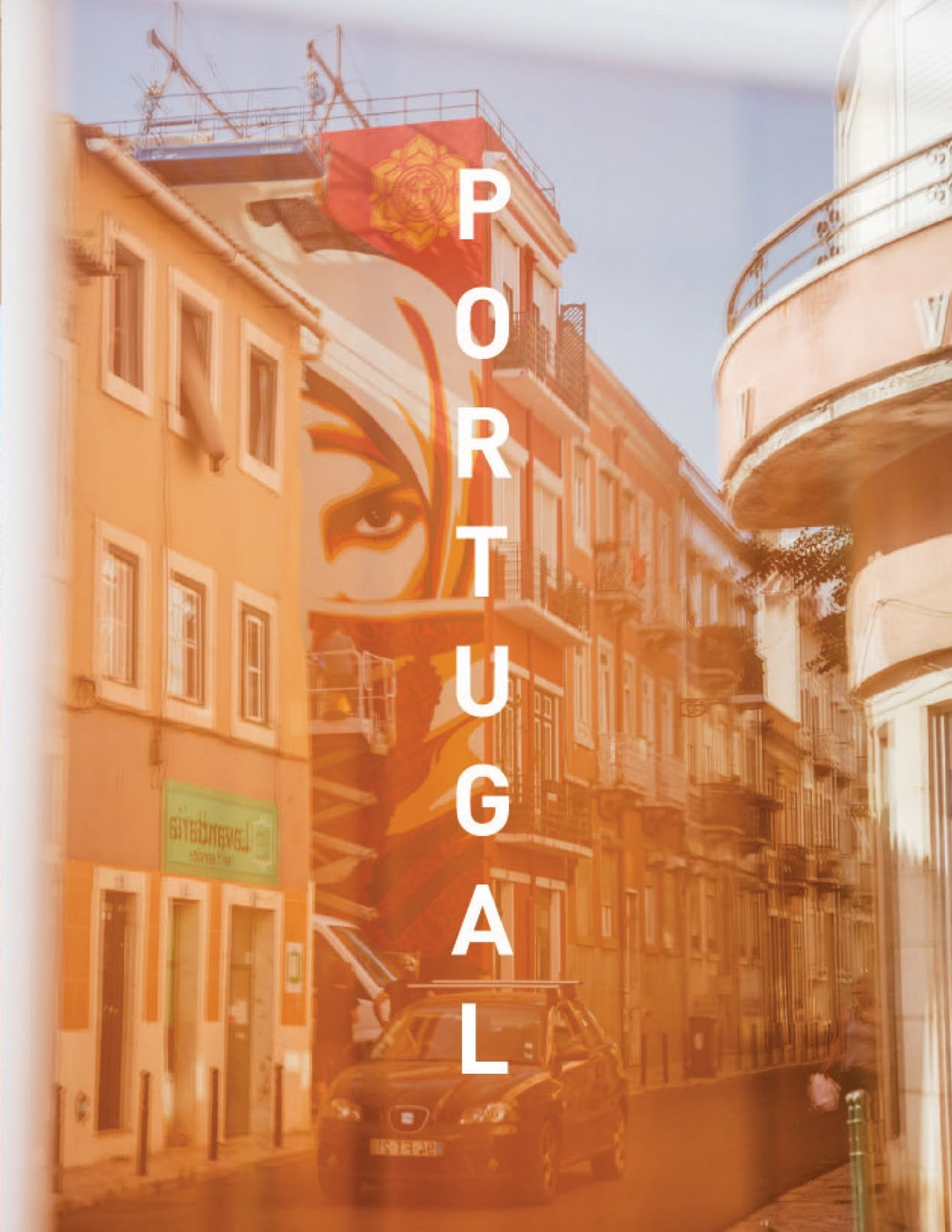
I also painted two other murals where I used the motif of the flower in the gun, a peace symbol inspired by war protestors putting flowers in the barrels of the National Guards guns during the Vietnam War era protests. I was happy that a symbolic motif that I've used in my work had a historical connection to the 1974 bloodless Carnation Revolution in Portugal, which ended a dictatorship and established democracy.

The show at Underdogs was nice and crowded, and I really enjoyed meeting so many friendly and enthusiastic people during the opening. The Underdogs crew did an amazing job producing the art show and facilitating the mural walls. Thanks to Vhils and the whole Underdogs family – Alex, Pauline, Raul, Duarte, Diana, Mariana, Sara, Pando. And of course, thank you to Jon Furlong for capturing the trip with these photos.

– Shepard



P O R T U G A L









EXCEPTO
CARRIS







UBER

RUA
JOSÉ COME
HENRIQUE
1900 - 1918

8-SO


BUY FAIR



BE FAIR

FAIR TRADE





FAIR TRADE IS A MARKET-BASED APPROACH THAT EMPOWERS FACTORY WORKERS AND FARMERS TO FIGHT POVERTY, PRODUCE QUALITY PRODUCTS, PROTECT THE ENVIRONMENT, AND BUILD STRONG THRIVING COMMUNITIES FOR GENERATIONS TO COME. AT THE SAME TIME, FAIR TRADE USA'S FAIR TRADE CERTIFIED™ LABEL EMPOWERS YOU, THE CONSUMER, WITH THE KNOWLEDGE THAT YOUR PURCHASE HAS A POSITIVE IMPACT ON THE PEOPLE WHO SEW AND GROW THE PRODUCTS YOU LOVE. FOR EVERY OBEY FAIR TRADE CERTIFIED™ PRODUCT SOLD, A PERCENTAGE IS PAID DIRECTLY TO A SPECIAL FUND FOR THE WORKERS THAT CREATE OUR GOODS. THEY DECIDE COLLECTIVELY HOW TO SPEND THESE FUNDS BASED ON THE COMMUNITY'S GREATEST NEEDS: FROM SCHOLARSHIPS AND SCHOOL BUSES, TO MEDICAL CARE AND DISASTER RELIEF SERVICES.

"SOCIAL RESPONSIBILITY AND JUSTICE HAVE ALWAYS BEEN VERY IMPORTANT TO OBEY IN BOTH MESSAGE AND PRACTICE. WE WORK WITH MANUFACTURERS THAT PROVIDE A FAIR WAGE AND ETHICAL WORKING CONDITIONS, AND HAVE NOW MADE THE FURTHER STEP TO BECOME AN OFFICIAL FAIR TRADE USA PARTNER (WWW.FAIRTRADEUSA.ORG). OUR FAIR TRADE CERTIFIED™ GARMENTS ARE PRODUCED IN FACTORIES THAT OPERATE AGAINST RIGOROUS SOCIAL, ENVIRONMENTAL AND ECONOMIC STANDARDS, WHERE WORKERS CAN DO THEIR JOBS WITH PRIDE AND DIGNITY. FOR EVERY FAIR TRADE CERTIFIED PRODUCT SOLD, WORKERS EARN MORE MONEY TO FIGHT POVERTY AND FUND COMMUNITY DEVELOPMENT. OUR HOPE IS NOT ONLY TO BENEFIT THE WORKERS OF THE FAIR TRADE FACTORIES, BUT TO LEAD BY EXAMPLE AND PROMOTE THE EXPANSION OF THE FAIR TRADE APPAREL PROGRAM."

- SHEPARD FAIREY

89 GROUP



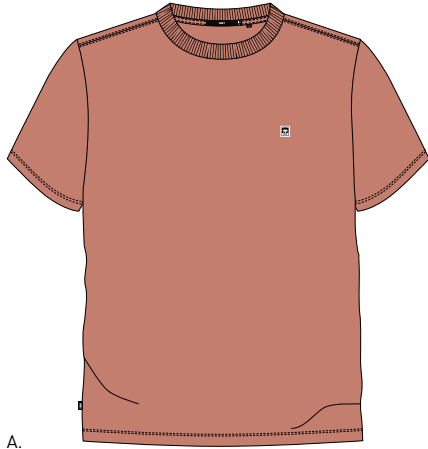
131080227 EIGHTY NINE ICON BOX TEE SS

89 GROUP

EIGHTY NINE SOLID BOX TEE SS

131080226

- Custom box fit short sleeve crew neck tee with solid rib trims
- Features a heavyweight carded jersey fabrication, OBEY original patch at chest
- Fair trade factory certified
- 100% Cotton



A.

B.



C.

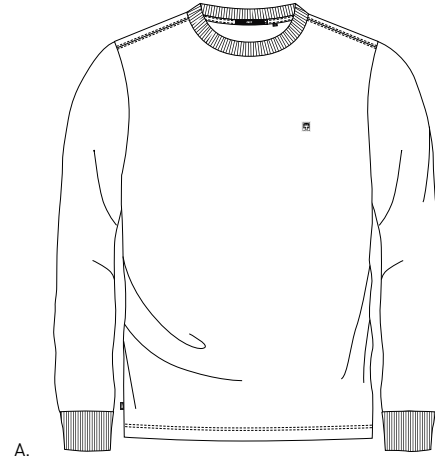


	COLOR	S	M	L	XL	XXL
A.	ROSE					
B.	BLACK					
C.	WHITE					

EIGHTY NINE SOLID BOX TEE LS

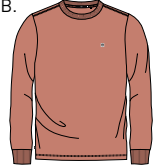
131030078

- Custom box fit long sleeve crew neck tee with solid rib trims
- Features a heavyweight carded jersey fabrication, OBEY original patch at chest
- Fair trade factory certified
- 100% Cotton



A.

B.



C.



	COLOR	S	M	L	XL	XXL
A.	WHITE					
B.	ROSE					
C.	BLACK					

EIGHTY NINE ICON BOX TEE SS

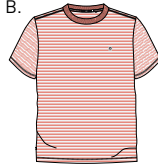
131080227

- Custom box fit short sleeve crew neck tee with solid rib trims
- Features a heavyweight carded stripe jersey fabrication, OBEY original patch at chest
- Fair trade factory certified
- 100% Cotton



A.

B.

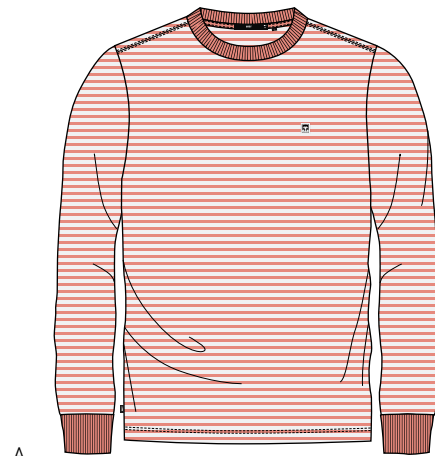


	COLOR	S	M	L	XL	XXL
A.	BLACK MULTI					
B.	CORAL MULTI					

EIGHTY NINE ICON BOX TEE LS

131030079

- Custom box fit long sleeve crew neck tee with solid rib trims
- Features a heavyweight carded stripe jersey fabrication, OBEY original patch at chest
- Fair trade factory certified
- 100% Cotton



A.

B.



	COLOR	S	M	L	XL	XXL
A.	CORAL MULTI					
B.	BLACK MULTI					

89 GROUP

EIGHTY NINE WOVEN SS

181210153

- Slim fit long and short sleeve button up shirt
- A proper button down collar shirt in oxford. A thin contrast piping at underside of collar stand and half face patch at front chest
- Features small OBEY flag label at side seam and white pearlized buttons
- 100% Cotton



A.

	COLOR	S	M	L	XL	XXL
A.	WHITE					

EIGHTY NINE WOVEN LS

181200192

- Slim fit long and short sleeve button up shirt
- A proper button down collar shirt in oxford. A thin contrast piping at underside of collar-stand and half face patch at front chest
- Features small OBEY flag label at side seam and white pearlized buttons
- 100% Cotton



A.

	COLOR	S	M	L	XL	XXL
A.	WHITE					

EIGHTY NINE STRIPES SS

181210154

- Slim fit short sleeve button up shirt
- A proper button down shirt in stripe oxford. A thin contrast piping at under side of collar-stand
- Half face patch at front chest and white pearlized buttons
- 100% Cotton



A.

	COLOR	S	M	L	XL	XXL
A.	PALE CORAL MULTI					

EIGHTY NINE STRIPES LS

181200193

- Slim fit long sleeve button up shirt
- A proper button down shirt in stripe oxford. A thin contrast piping at under side of collar-stand
- Half face patch at front chest and white pearlized buttons
- 100% Cotton



A.

	COLOR	S	M	L	XL	XXL
A.	PALE CORAL MULTI					

89 GROUP

EIGHTY NINE CREW

111600069

- Slim fit fleece crew neck with solid rib trims
- Features an OBEY logo patch at chest, French terry fabrication and novelty stitching along seams
- Solid : 80% Cotton / 20% Polyester; Heather Grey: 55% Cotton / 45% Polyester



	COLOR	S	M	L	XL	XXL
A.	BLACK					
B.	HEATHER GREY					

EIGHTY NINE ICON ZIP HOOD

111620024

- Slim fit hooded fleece pullover with solid rib trims
- Features an OBEY logo patch at chest, French terry fabrication and novelty stitching along seams
- Solid : 80% Cotton / 20% Polyester; Heather Grey : 55% Cotton / 45% Polyester

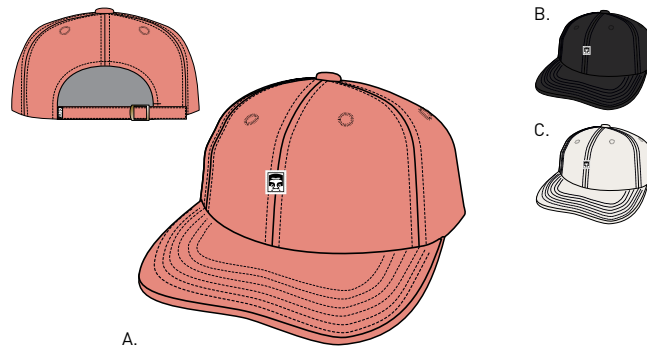


	COLOR	S	M	L	XL	XXL
A.	HEATHER GREY					
B.	BLACK					

EIGHTY NINE II 6 PANEL HAT

100580138

- Cotton poplin low profile 6 panel hat with embroidered felt patch, self compression closure, and woven flag label
- 100% Cotton



	COLOR	O/S		
A.	PALE CORAL			
B.	BLACK			
C.	OFF WHITE			

HARD WORK OVERDYED GROUP



121800318 HARD WORK JACKET

HARD WORK OVERDYED GROUP

HARD WORK JACKET

121800318

- Regular fit workwear jacket
- Style offered in seasonal pop colors with four patch pockets at front
- Eyes woven label sewn down at chest pocket and side flag label at side seam
- 100% Cotton



	COLOR	S	M	L	XL	XXL
A.	BLACK					
B.	DUSTY YELLOW					
C.	TEAL					

HARD WORK PANT

142020108

- Standard fit garment dyed twill pants with button and zipper fly closure at center front
- Features slash front pockets, and back welt pockets
- Includes OBEY specialty labels at exterior back pocket and interior waistband
- 100% Cotton



	COLOR	28	30	31	32	33	34	36	38
A.	TEAL								
B.	BLACK								
C.	DUSTY YELLOW								





LAYAWAY
OR
RIGHT AWAY





LOITER BIG FITS PANT LOOSE FIT



- SITS BELOW WAIST
- FULL SEAT AND THIGH
- FULL STRAIGHT LEG
- FLOODED INSEAM
- 18" LEG OPENING

SITS BELOW WAIST

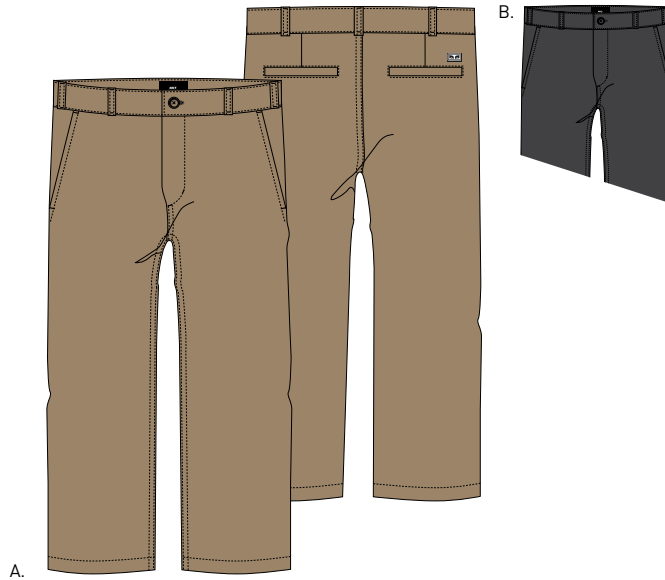
FULL STRAIGHT LEG

18" LEG OPENING

LOITER BIG FITS PANT

142020099

- Loose fit flooded (shorter inseam) twill pants with button and zipper fly closure at center front
- Features enzyme stone wash, slash front pockets, and back welt pockets
- Includes OBEY specialty labels at exterior back pocket and interior waistband
- 100% Cotton



A.

B.

	COLOR	28	30	31	32	33	34	36	38
A.	KHAKI								
B.	BLACK								



FUBAR BIG FITS PANT LOOSE FIT

- SITS BELOW WAIST
- FULL SEAT AND THIGH
- FULL TAPERED LEG
- FLOODED INSEAM
- 17" LEG OPENING

SITS BELOW WAIST

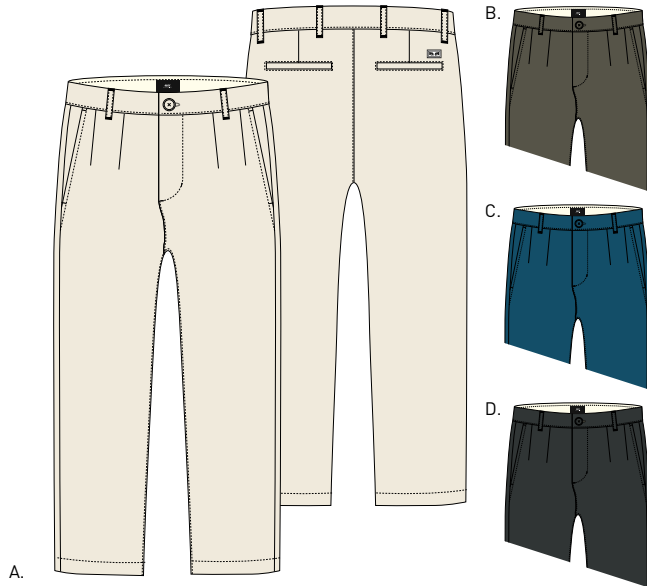
FULL TAPERED LEG

17" LEG OPENING

FUBAR BIG FITS PANT

142020101

- Loose fit flooded (shorter inseam) herringbone twill pants with button and zipper fly closure at center front
- Features front pleats, slash front pockets, contrast interior details, and back welt pockets
- Includes OBEY specialty labels at exterior back pocket and interior waistband
- 100% Cotton



	COLOR	28	30	31	32	33	34	36	38
A.	NATURAL								
B.	ARMY								
C.	INDIGO								
D.	BLACK								

FUBAR BIG FITS CARGO PANT

142020103

- Loose fit flooded (shorter inseam) ripstop cargo pants with button and zipper fly closure at center front
- Features front pleats, slash front pockets, cargo pockets, and back welt pockets
- Includes OBEY specialty labels at exterior cargo pocket flap and interior waistband
- 100% Cotton



	COLOR	28	30	31	32	33	34	36	38
A.	CHOCO CHIP CAMO								
B.	FIELD CAMO								



FUBAR 90'S CARGO SHORT II

172100070

- Relaxed fit
- Military influenced cotton twill shorts with button and zipper fly closure. Feature slash front pockets, back welt pockets and oversized cargo pockets w/ eye label.
- 100% Cotton



	COLOR	28	30	31	32	33	34	36	38
A.	LIGHT ARMY								
B.	BLACK								

BIG BOY PANTS

BIG BOY PANTS BASIC TEE

- Regular fit crew neck tee with rib neck trim
- Made with heavyweight cotton
- Solid: 100% Cotton; Heather Grey: 90% Cotton / 10% Polyester



A.

	COLOR	S	M	L	XL	XXL
A.	BLACK					
B.	HEATHER GREY					
C.	WHITE					

163081595

B.



C.



BIG BOY PANTS BASIC LONG SLEEVE TEE

- Regular fit crew neck long sleeve tee with rib neck trim
- Made with heavyweight cotton
- Solid: 100% Cotton; Heather Grey: 90% Cotton / 10% Polyester



A.

	COLOR	S	M	L	XL	XXL
A.	HEATHER GREY					
B.	WHITE					
C.	BLACK					

164901595

B.



C.



BIG BOY PANTS BASIC CREW NECK

- Regular fit crew neck fleece with rib trims and set in sleeves
- 50% Cotton / 50% Polyester



A.

	COLOR	S	M	L	XL	XXL
A.	WHITE					
B.	ASH					
C.	BLACK					

111741595

B.



C.



BIG BOY 6 PANEL HAT

- Cotton twill low profile 6 panel hat with custom woven label and self fabric closure
- 100% Cotton



A.

	COLOR	O/S
A.	BLACK	

100580100

SHOUT SNAPBACK

- Cotton / polyester twill 5 panel snapback with woven label patch, plastic snap closure, and woven flag label
- 60% Cotton / 40% Polyester



A.

	COLOR	O/S
A.	ORANGE	

100570066

B.



BIG BOY BELT

- Adjustable webbing belt with antique silver hardware and a OBEY original label
- 60% Cotton / 40% Polyester



A.

	COLOR	O/S
A.	TEAL	
B.	BLACK	

B.



C.



D.



100050026

DENIM



142010062 BENDER PRINTED DENIM

JUVEE DENIM SKINNY FIT

- SITS BELOW WAIST
- SEAT AND THIGH
- SKINNY STRAIGHT LEG
- REGULAR & FLOODED INSEAM AVAILABLE
- STRETCH FABRICATION
- 13 1/2" LEG OPENING



SITS BELOW WAIST

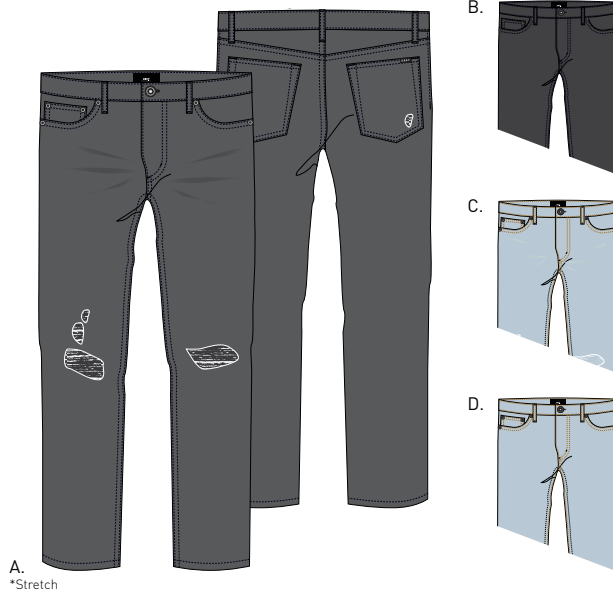
SKINNY STRAIGHT LEG

13 1/2" LEG OPENING

JUVEE DENIM II

142010055

- Skinny fit five pocket stretch denim jeans with button and zipper fly closure at center front
- Features custom OBEY logo shank at waistband and novelty logo rivet details throughout
- Includes OBEY specialty labels at exterior back pocket and interior waistband
- 99% Cotton / 1% Spandex

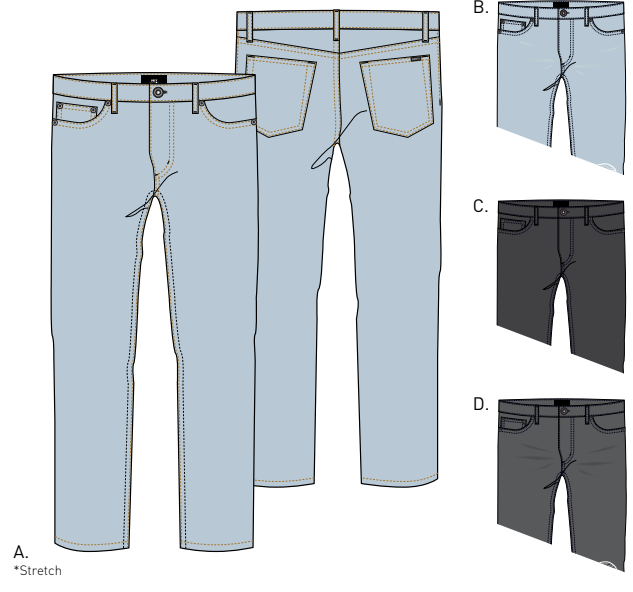


	COLOR	28	30	31	32	33	34	36	38
A.	DESTROYED BLACK								
B.	BLACK								
C.	DESTROYED INDIGO								
D.	BLEACHED INDIGO								

JUVEE FLOODED DENIM II

142010056

- Skinny fit flooded (shorter inseam) five pocket stretch denim jeans with button and zipper fly closure at center front
- Features custom OBEY logo shank at waistband, and novelty logo rivet details throughout
- Includes OBEY specialty labels at exterior back pocket and interior waistband
- 99% Cotton / 1% Spandex



	COLOR	28	30	31	32	33	34	36	38
A.	BLEACHED INDIGO								
B.	DESTROYED INDIGO								
C.	BLACK								
D.	DESTROYED BLACK								



NEW THREAT DENIM SLIM STRAIGHT FIT

- SITS BELOW WAIST
- SLIM SEAT AND THIGH
- SLIM STRAIGHT LEG
- REGULAR & FLOODED INSEAM AVAILABLE
- 14 1/2" LEG OPENING



SITS BELOW WAIST

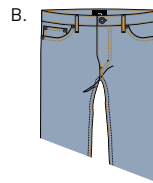
SLIM STRAIGHT LEG

14 1/2" LEG OPENING

NEW THREAT DENIM II

142010053

- Slim straight fit five pocket denim jeans with button and zipper fly closure at center front
- Features custom OBEY logo shank at center front waistband and logo rivet details throughout
- Includes OBEY specialty labels at exterior back pocket and interior waistband
- 100% Cotton



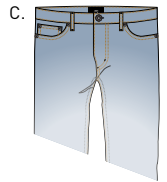
A.

	COLOR	28	30	31	32	33	34	36	38
A.	RAW INDIGO								
B.	LIGHT INDIGO								
C.	DESTROYED INDIGO								

NEW THREAT CUT DENIM

142010054

- Slim straight fit flooded (shorter inseam) five pocket denim jeans with raw cut hems and button and zipper fly closure at center front
- Features custom OBEY logo shank at center front waistband and logo rivet details throughout
- Includes OBEY specialty labels at exterior back pocket and interior waistband
- 100% Cotton



A.

	COLOR	28	30	31	32	33	34	36	38
A.	BONE BROWN								
B.	TRUE BLACK								
C.	DIP DYE INDIGO								

BENDER DENIM
STANDARD FIT

- SITS BELOW WAIST
- REGULAR SEAT AND THIGH
- SLIGHT TAPERED LEG
- REGULAR & FLOODED INSEAM AVAILABLE
- 15" LEG OPENING

SITS BELOW WAIST

SLIGHT TAPER AT LEG

15" LEG OPENING

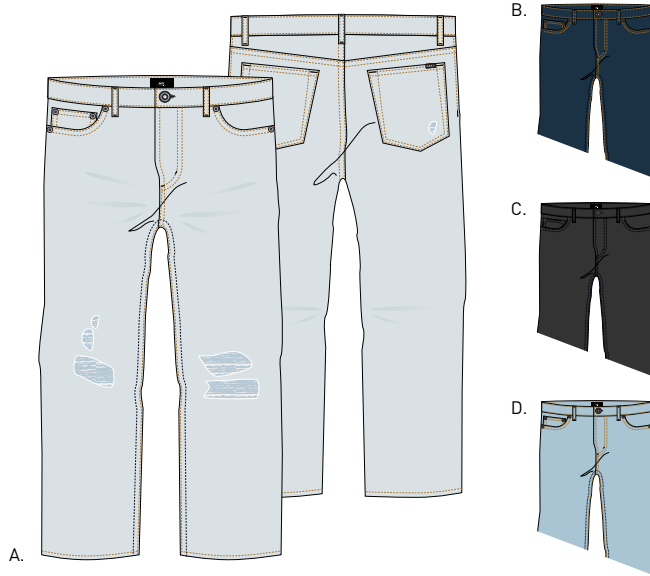


DENIM

BENDER 90'S DENIM

142010050

- Standard fit flooded (shorter inseam) five pocket denim jeans with button and zipper fly closure at center front
- Features custom OBEY logo shank at center front waistband and logo rivet details throughout
- Includes OBEY specialty labels at exterior back pocket and interior waistband
- 100% Cotton

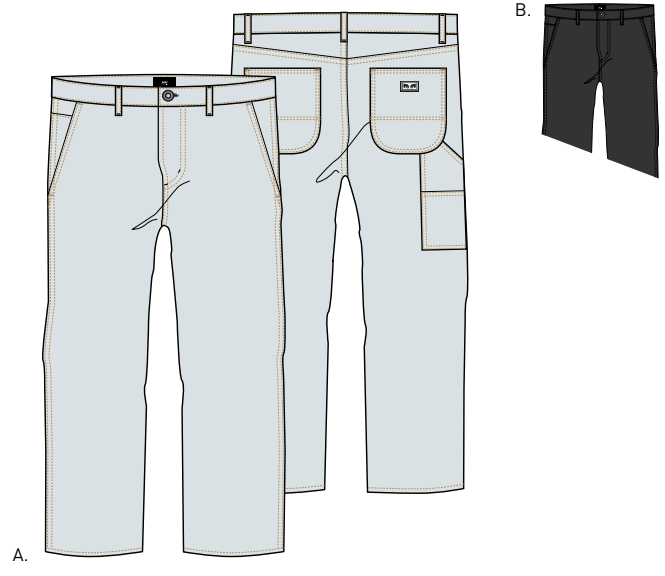


	COLOR	28	30	31	32	33	34	36	38
A.	DESTROYED INDIGO								
B.	STONE WASHED INDIGO								
C.	TRUE BLACK								
D.	LIGHT INDIGO								

BENDER CARPENTER DENIM

142010060

- Standard fit flooded (shorter inseam) five-pocket denim jeans with button and zipper fly closure at center front
- Features carpenter back pocket details, custom OBEY shank button at center front fly closure, and logo rivet details throughout
- Includes OBEY specialty labels at exterior back pocket and interior waistband
- 100% Cotton



	COLOR	28	30	31	32	33	34	36	38
A.	BLEACHED INDIGO								
B.	TRUE BLACK								

BENDER PRINTED DENIM

142010062

- Standard fit flooded (shorter inseam) five-pocket denim jeans with custom all over print, button and zipper closure at center front
- Features custom OBEY logo shanks at center front fly closure and logo rivet details throughout Includes OBEY specialty labels at exterior back pocket and interior waistband
- 100% Cotton



	COLOR	28	30	31	32	33	34	36	38
A.	BLACK MULTI								

BLENDER DENIM
STANDARD FIT



- BLENDER OVERDYED DENIM

142010061
- Standard fit flooded (shorter inseam) five pocket denim jeans with button and zipper fly closure at center front
 - Features custom OBEY logo shank at center front waistband and logo rivet details throughout
 - Includes OBEY specialty labels at exterior back pocket and interior waistband
 - 100% Cotton

A.

B.

C.

D.

	COLOR	28	30	31	32	33	34	36	38
A.	TEAL								
B.	TRUE BLACK								
C.	BRIGHT WHITE								
D.	DUSTY YELLOW								



DENIM FIT GUIDE

JUVEE DENIM

- SITS BELOW WAIST
- SLIM SEAT AND THIGH
- SKINNY STRAIGHT LEG
- REGULAR & FLOODED INSEAM AVAILABLE
- STRETCH FABRICATION
- 13 1/2" LEG OPENING

SKINNY FIT



NEW THREAT DENIM

- SITS BELOW WAIST
- SLIM SEAT AND THIGH
- SLIM STRAIGHT LEG
- REGULAR & FLOODED INSEAM AVAILABLE
- 14 1/2" LEG OPENING

SLIM STRAIGHT FIT



DENIM FIT GUIDE

BENDER DENIM

- SITS BELOW WAIST
- REGULAR SEAT AND THIGH
- SLIGHT TAPERED LEG
- REGULAR & FLOODED INSEAM AVAILABLE
- 15" LEG OPENING

STANDARD FIT



BLENDER DENIM

- SITS BELOW WAIST
- REGULAR SEAT AND THIGH
- SLIGHT TAPERED LEG
- REGULAR INSEAM
- 15" LEG OPENING

STANDARD FIT



WOVENS



181210205 ASHED OUT WOVEN

WOVENS

KEBLE DENIM WOVEN SS

- Slim fit
- A short sleeve button up shirt in denim. Single chest pocket with button closure and white logo pearlized buttons
- 100% Cotton

181210183



A.



	COLOR	S	M	L	XL	XXL
A.	TEAL					
B.	LIGHT BLUE					
C.	PALE CORAL					

TOWNE WOVEN SS

- Slim fit
- Short sleeve button up shirt in soft micro stripe. Single chest pocket with strip label at pocket opening and white logo pearlized buttons
- 100% Cotton

181210185



A.



	COLOR	S	M	L	XL	XXL
A.	MAGENTA MULTI					
B.	BLACK MULTI					
C.	TEAL MULTI					

NORRIS WOVEN

- Slim fit
- Short sleeve button up shirt in all over retro print offered in pop colors. Single chest pocket with flag label at side and white logo pearlized buttons
- Fair trade factory certified
- 100% Cotton

181210200



A.



	COLOR	S	M	L	XL	XXL
A.	LAVENDER MULTI					
B.	WHITE MULTI					

DORIAN WOVEN

- Slim fit
- Short sleeve button up shirt in all over scribble art print shirt and pop colors. Single chest pocket with flag label at side and white logo pearlized buttons
- Fair trade factory certified
- 100% Cotton

181210201



A.



	COLOR	S	M	L	XL	XXL
A.	SEAFOAM MULTI					
B.	WHITE MULTI					

WOVENS

LANDRI WOVEN

- Slim fit
- Short sleeve button up shirt in retro vintage-inspired all over print. Single chest pocket with flag label at side and white logo pearlized buttons
- 100% Cotton

181210202



	COLOR	S	M	L	XL	XXL
A.	CORAL MULTI					
B.	BLACK MULTI					

BROME WOVEN SS

- Slim fit
- A loose, lightweight short sleeve button up shirt with straight bottom hem shape. Single chest pocket with flag label at side and white logo pearlized buttons
- 100% Cotton

181210189

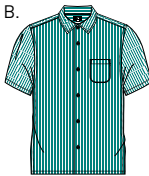


	COLOR	S	M	L	XL	XXL
A.	TEAL					
B.	BLACK					
C.	DUSTY YELLOW					

AVALON WOVEN

- Regular fit
- Short sleeve button up shirt in poplin stripe with straight bottom hem shape. Single chest pocket with flag label at side and white logo pearlized buttons
- 100% Cotton

181210191

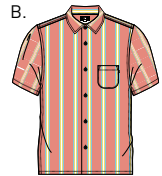


	COLOR	S	M	L	XL	XXL
A.	CORAL MULTI					
B.	TEAL MULTI					
C.	BLACK MULTI					

YORK WOVEN

- Regular fit
- Short sleeve button up shirt in striped viscose with straight bottom hem shape. Single chest pocket with flag label at side and white logo pearlized buttons
- 100% Viscose

181210206



	COLOR	S	M	L	XL	XXL
A.	HEATHER NAVY MULTI					
B.	HEATHER CORAL MULTI					

WOVENS

NATE WOVEN

- Regular fit
- Short sleeve button up shirt in all over palm leaves and flower print with straight bottom hem shape. Single chest pocket with flag label at side and solid black logo gloss buttons
- Fair trade factory certified
- 100% Rayon



A.

B.



	COLOR	S	M	L	XL	XXL
A.	PINK MULTI					
B.	WHITE MULTI					

DANTE WOVEN

- Regular fit
- Short sleeve button up shirt in X-ray art all over print with straight bottom hem shape. Single chest pocket with flag label at side and white logo pearlized buttons
- 100% Viscose



A.

	COLOR	S	M	L	XL	XXL
A.	BLACK MULTI					

ASHED OUT WOVEN

- Regular fit
- Short sleeve button up shirt in all over cigarette and floral print with straight bottom hem shape. Single chest pocket with flag label at side and white logo pearlized buttons
- 100% Viscose

181210205



A.

	COLOR	S	M	L	XL	XXL
A.	TEAL MULTI					

KNITS



131090037 BOTTON UP BOX POLO

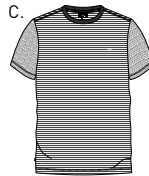
KNITS

APEX TEE

- Regular fit
- Short sleeve crew neck tee with solid rib trims. Features a multicolor yarn-dyed stripe jersey fabrication and OBEY screen print logo at chest
- Fair trade factory certified
- 100% Cotton



A.



	COLOR	S	M	L	XL	XXL
A.	YELLOW MULTI					
B.	TEAL MULTI					
C.	BLACK MULTI					

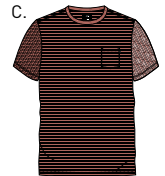
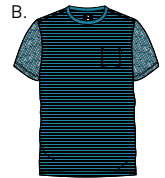
131080182

WISEMAKER POCKET TEE

- Regular fit
- Short sleeve crew neck tee with chest pocket and solid rib trims. Features a multicolor yarn-dyed stripe jersey fabrication and contrast neckband
- Fair trade factory certified
- 100% Cotton



A.

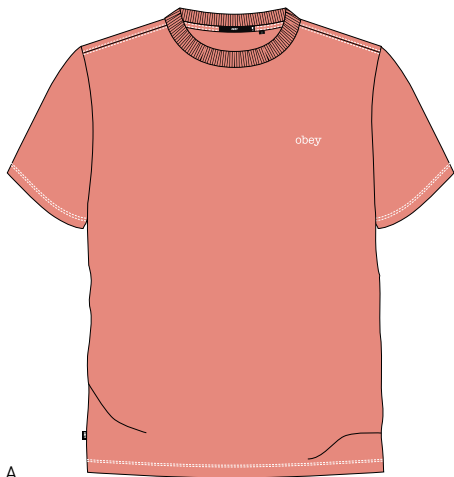


	COLOR	S	M	L	XL	XXL
A.	APPLE GREEN MULTI					
B.	AQUA MULTI					
C.	CORAL MULTI					

131080072

PRESSURE BOX TEE SS

- Classic fit
- Short sleeve crew neck tee with solid rib trims. Features a heavyweight carded jersey fabrication, contrast stitching and embroidery at chest
- Fair trade factory certified
- 100% Cotton



A.



	COLOR	S	M	L	XL	XXL
A.	CORAL					
B.	BLACK					
C.	ROYAL BLUE					

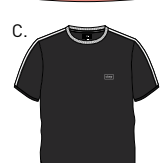
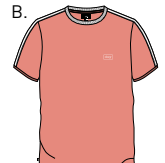
131080223

BORSTAL TEE SS

- Regular fit
- Short sleeve crew neck tee with solid rib trims. Features a heavyweight carded jersey fabrication, contrast band at neck and embroidery at chest
- Fair trade factory certified
- 100% Cotton



A.



	COLOR	S	M	L	XL	XXL
A.	TEAL					
B.	CORAL					
C.	BLACK					

131080224

KNITS

CLOVER BOX TEE SS

131080231

- Classic fit
- Short sleeve crew neck tee with solid rib trims. Features a heavyweight carded jersey fabrication, multicolor yarn-dyed stripe and logo embroidery at chest
- Fair trade factory certified
- 100% Cotton



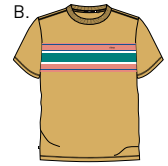
A.

	COLOR	S	M	L	XL	XXL
A.	ORANGE MULTI					
B.	LIME MULTI					

KELLY BOX TEE SS

131080230

- Classic fit
- Short sleeve crew neck tee with solid rib trims. Features a heavyweight carded jersey fabrication, multicolor stripe screen print across chest and logo embroidery
- Fair trade factory certified
- 100% Cotton



A.

	COLOR	S	M	L	XL	XXL
A.	ROYAL BLUE MULTI					
B.	YELLOW MULTI					

MANGO POLO SS

131090038

- Regular fit
- Short sleeve polo with rib trims. Features a pique fabrication, OBEY logo buttons at placket and OBEY embroidery at chest
- Fair trade factory certified
- Solid: 100% Cotton; Heather Grey: 88% Cotton / 12% Polyester



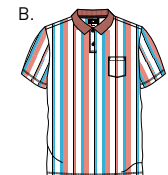
A.

	COLOR	S	M	L	XL	XXL
A.	ATHLETIC HEATHER GREY					
B.	ROYAL BLUE					

ALLEN POLO SS

131090036

- Regular fit
- Short sleeve polo with rib trims. Features a heavyweight vertical yarn-dyed stripe, carded fabrication, OBEY logo buttons at placket and OBEY embroidery at chest pocket
- Fair trade factory certified
- 100% Cotton



A.

	COLOR	S	M	L	XL	XXL
A.	AVOCADO MULTI					
B.	CORAL MULTI					

KNITS

BLOCK POLO SS

- Regular fit
- Short sleeve polo with contrast rib trims. Features a pique fabrication and hidden zipper placket
- Fair trade factory certified
- 100% Cotton



A.

B.



131090039

	COLOR	S	M	L	XL	XXL
A.	LIME					
B.	AQUA					

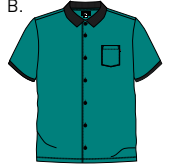
CATALINA BUTTON UP BOX POLO

- Classic fit
- Short sleeve button front polo with rib trims. Features a velour fabrication, OBEY logo buttons at placket and chest pocket
- Fair trade factory certified
- 100% Cotton



A.

B.



131090037

	COLOR	S	M	L	XL	XXL
A.	CORAL					
B.	TEAL					

ALL EYEZ POLO

- Regular fit
- Short sleeve polo with rib trims. Features a pique fabrication, OBEY logo buttons at placket and eyes label at chest pocket
- Fair trade factory certified
- 100% Cotton



A.

B.



C.



131090034

	COLOR	S	M	L	XL	XXL
A.	LIGHT BLUE					
B.	TEAL					
C.	CORAL					

ALL EYEZ CAMO POLO

- Regular fit
- Short sleeve polo with rib trims. Features a pique fabrication, OBEY logo buttons at placket and eyes label at chest pocket
- Fair trade factory certified
- 100% Cotton



A.

B.



131090035

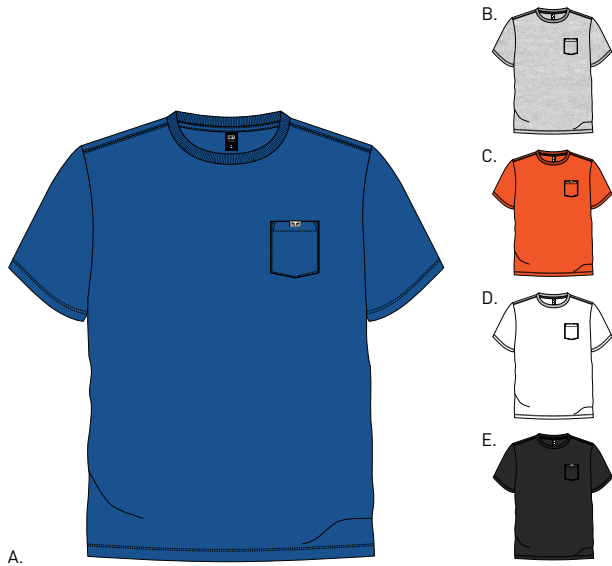
	COLOR	S	M	L	XL	XXL
A.	FIELD ORANGE CAMO					
B.	FIELD PURPLE CAMO					

KNITS

ALL EYEZ POCKET TEE SS

- Regular fit short sleeve crew neck tee with solid rib trims
- Features a solid jersey fabrication with a chest pocket and clip label
- Solid: 100% Cotton; Orange: 50% Cotton 50% Polyester; Heather grey 90% Cotton 10% Polyester

131080225



	COLOR	S	M	L	XL	XXL
A.	ROYAL BLUE					
B.	HEATHER GREY					
C.	ORANGE					
D.	WHITE					
E.	BLACK					

ALL EYEZ POCKET TEE LS

- Regular fit long sleeve crew neck tee with solid rib trims
- Features a solid jersey fabrication with a chest pocket and clip label
- Solid: 100% Cotton; Safety green & Orange: 50% Cotton 50% Polyester; Heather grey 90% Cotton 10% Polyester

131030077

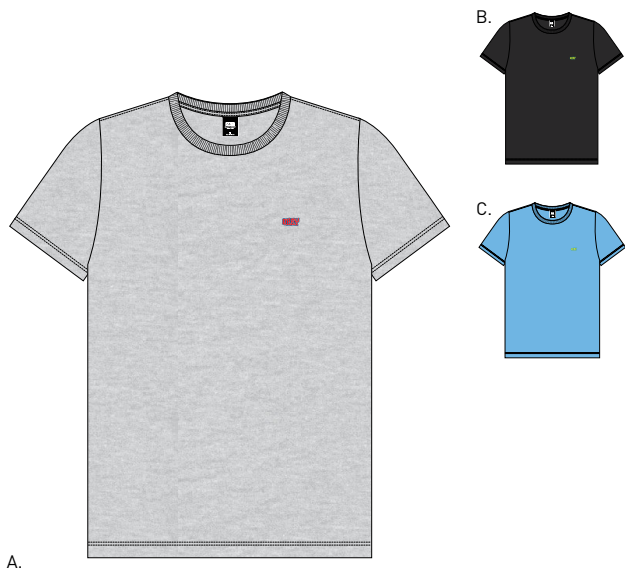


	COLOR	S	M	L	XL	XXL
A.	ORANGE					
B.	WHITE					
C.	BLACK					
D.	SAFETY GREEN					
E.	HEATHER GREY					

BETTER DAYS TEE

- Regular fit short sleeve crew neck tee with solid rib trims
- Features an OBEY original embroidery at chest
- Solid : 100% Cotton; Heather Grey : 90% Cotton / 10% Polyester

131080228

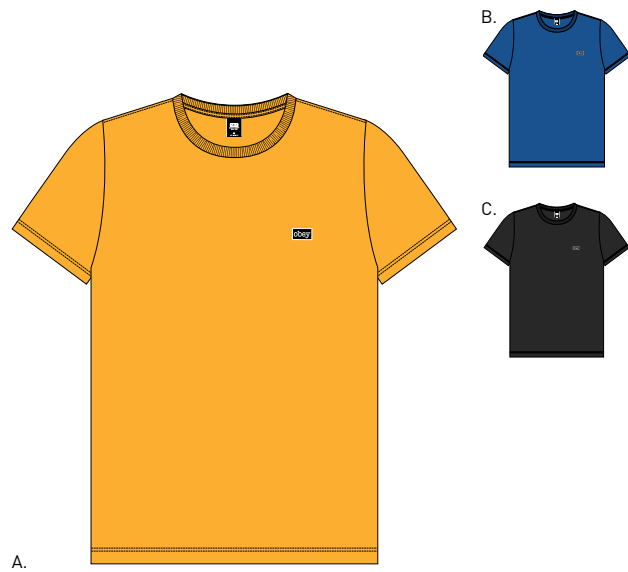


	COLOR	S	M	L	XL	XXL
A.	HEATHER GREY					
B.	BLACK					
C.	POWDER BLUE					

OBEY TYPEWRITER TEE

- Regular fit short sleeve crew neck tee with solid rib trims
- Features an OBEY original embroidery at chest
- 100% Cotton

131080229



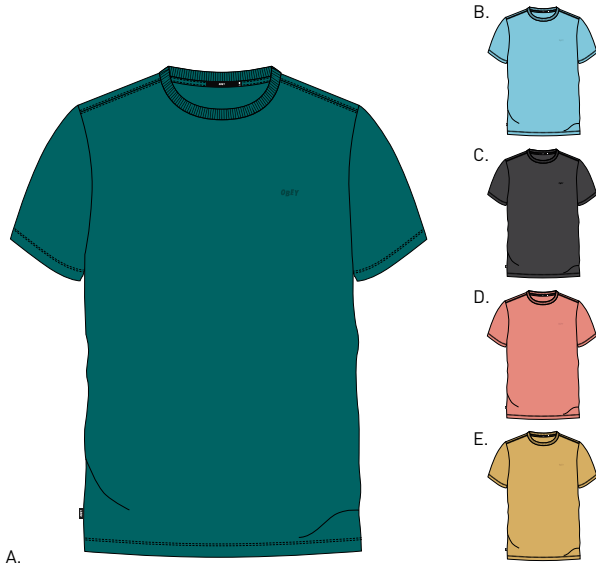
	COLOR	S	M	L	XL	XXL
A.	GOLD					
B.	ROYAL BLUE					
C.	BLACK					

KNITS

JUMBLE PIGMENT TEE SS

131080186

- Regular fit short sleeve crew neck tee with solid rib trims
- Features a pigment-dyed jersey fabrication and tonal embroidery at chest
- 100% Cotton

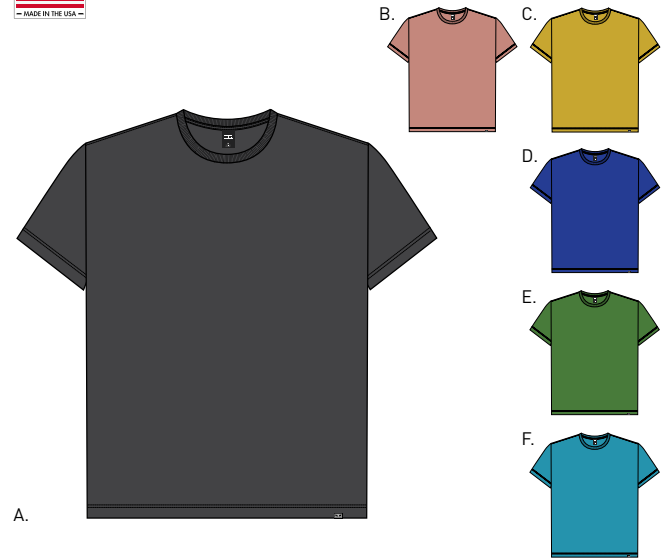


	COLOR	S	M	L	XL	XXL
A.	DUSTY TEAL					
B.	DUSTY BLUE					
C.	BLACK					
D.	DUSTY CORAL					
E.	DUSTY YELLOW					

HEAVYWEIGHT EYES BOX TEE

131030081

- Custom box fit long sleeve crew neck tee with solid rib trims
- Features a heavyweight carded jersey fabrication, OBEY original clip label at hem
- Made in USA
- 100% Cotton



	COLOR	S	M	L	XL	XXL
A.	OFF BLACK					
B.	APRICOT					
C.	SPECTRA YELLOW					
D.	ROYAL BLUE					
E.	VINTAGE GREEN					
F.	AQUA MARINE					

HEAVYWEIGHT EYES HOCKEY JERSEY

131030080

- Custom box fit long sleeve hockey jersey tee with solid rib trims
- Features a heavyweight carded jersey fabrication, OBEY original clip label at hem
- Made in USA
- 100% Cotton



	COLOR	S	M	L	XL	XXL
A.	APRICOT					
B.	VINTAGE GREEN					
C.	SPECTRA YELLOW					
D.	OFF BLACK					
E.	AQUA MARINE					
F.	ROYAL BLUE					

SHORTS



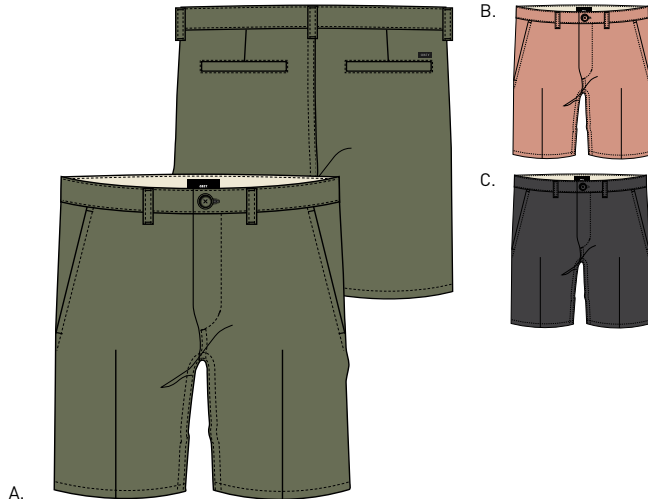
172120032 PALOMA SHORT

SHORTS

STRAGGLER LIGHT SHORT

172100064

- Standard fit
- Lightweight cotton twill shorts with button and zipper fly closure, slash front pockets, and back welt pockets
- 100% Cotton

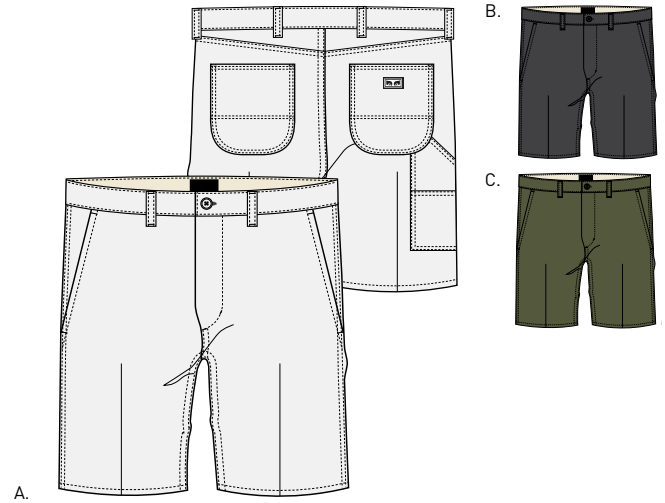


	COLOR	28	30	31	32	33	34	36	38
A.	LIGHT ARMY								
B.	DUSTY ROSE								
C.	BLACK								

STRAGGLER CARPENTER SHORT

172100063

- Standard fit
- Cotton slub twill carpenter shorts with button and zipper fly closure, slash front pockets, and carpenter back pocket details
- 100% Cotton

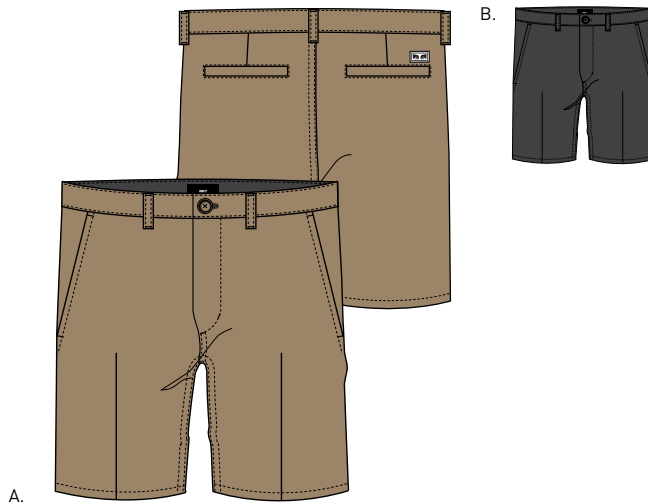


	COLOR	28	30	31	32	33	34	36	38
A.	WHITE								
B.	BLACK								
C.	ARMY								

WORKING MAN TWILL SHORT

172100069

- Standard fit
- Work shorts with button and zipper fly closure, slash front pockets, and back welt pockets
- 60% Cotton / 40% Polyester



	COLOR	28	30	31	32	33	34	36	38
A.	KHAKI								
B.	BLACK								

RECON CARGO SHORT II

172100062

- Relaxed fit
- Cotton ripstop cargo shorts with button and zipper fly closure, slash front pockets, adjustable waistband tabs, back welt pockets, and OBEY mil spec screen print on cargo pocket flap
- 100% Cotton



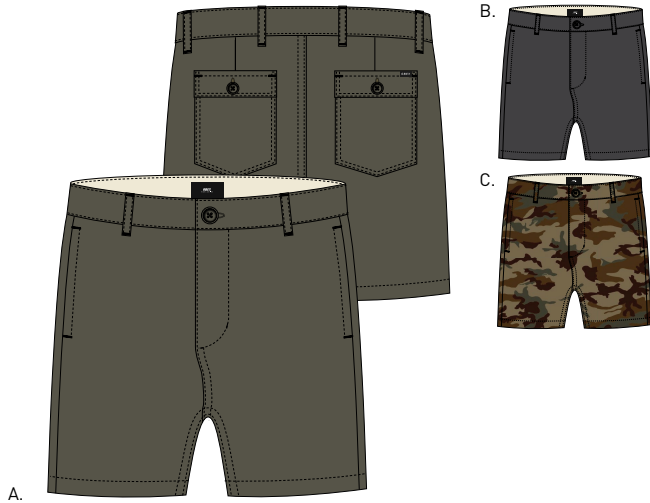
	COLOR	28	30	31	32	33	34	36	38
A.	FIELD CAMO								
B.	ARMY								
C.	BLACK								

SHORTS

LAGGER PATCH POCKET SHORT

172100058

- Relaxed fit
- Military-influenced slub twill shorts with button and zipper fly closure, on seam front pockets, and back patch pockets
- 100% Cotton

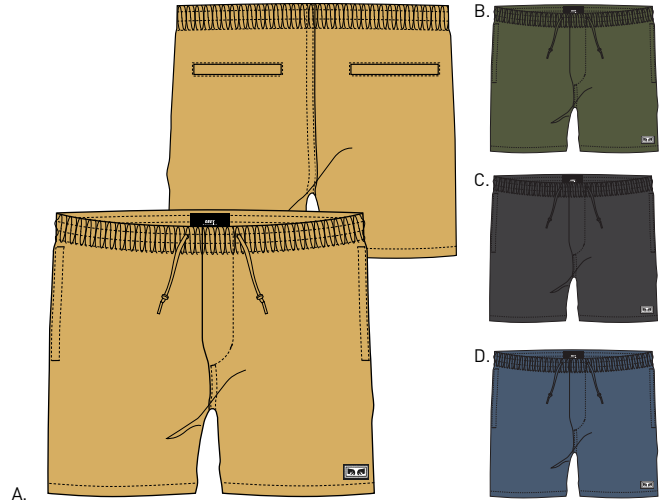


	COLOR	28	30	31	32	33	34	36	38
A.	ARMY								
B.	BLACK								
C.	CAMO								

LEGACY SHORT III

172120028

- Regular fit
- Elastic waist cotton poplin shorts with tunnel through draw-cord at waistband, on seam pockets, back welt pockets, and faux fly
- 100% Cotton



	COLOR	S	M	L	XL	XXL
A.	DUSTY YELLOW					
B.	ARMY					
C.	BLACK					
D.	VINTAGE INDIGO					

SUBVERSION SHORT

172120029

- Regular fit
- Elastic waist cotton poplin shorts in all over camo print and features a tunnel through drawcord at waistband, on seam pockets, back welt pockets, and faux fly
- 100% Cotton

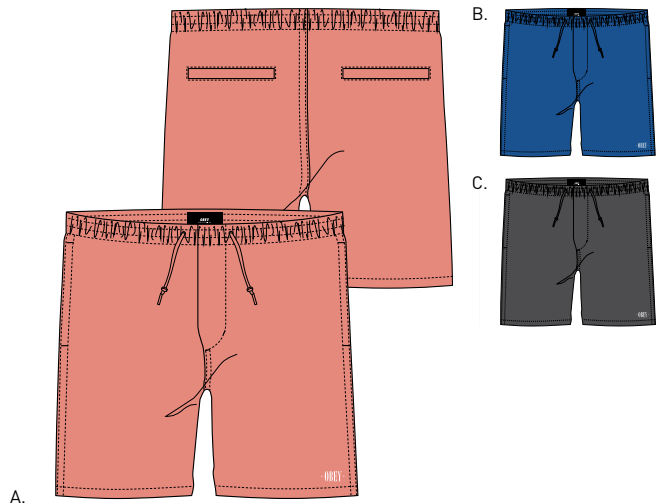


	COLOR	S	M	L	XL	XXL
A.	ORANGE CAMO					
B.	PURPLE CAMO					
C.	PSYCHO CAMO					
D.	FIELD CAMO					
E.	CHOCO CHIP CAMO					

HERITAGE SHORT

172120025

- Relaxed fit
- Elastic waist shorts in overdyed cotton twill fabric with a stonewash treatment. Features a tunnel through draw-cord at waistband, faux fly, on-seam front pockets, and single welt back pockets.
- 100% Cotton



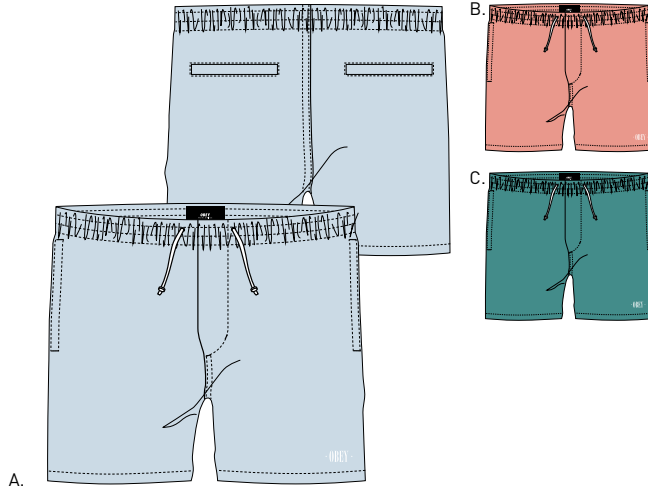
	COLOR	S	M	L	XL	XXL
A.	PALE CORAL					
B.	BRIGHT BLUE					
C.	FADED BLACK					

SHORTS

KEBLE SHORT

172120022

- Regular fit
- Elastic waist denim shorts with a tunnel through draw-cord at waistband, on seam pockets, back welt pockets, faux fly center, and embroidery at front leg panel
- 100% Cotton

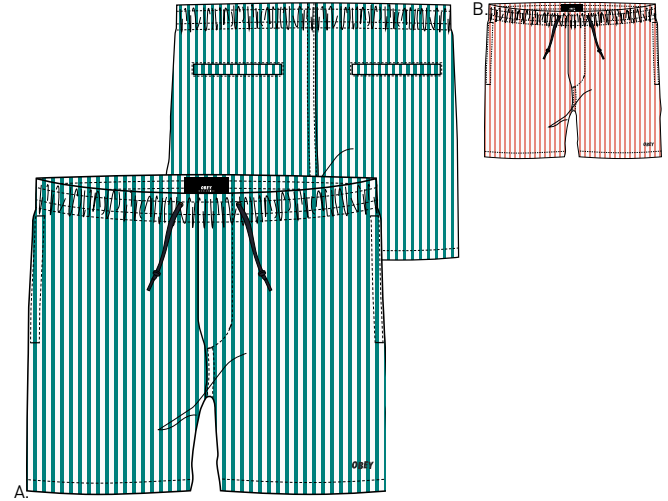


	COLOR	S	M	L	XL	XXL
A.	LIGHT BLUE					
B.	PALE CORAL					
C.	TEAL					

CYPRESS SHORT

172120034

- Regular fit
- Elastic waist shorts in yarn-dyed cotton seersucker fabric. Features a tunnel through draw-cord at waistband, faux fly, on-seam front pockets, single welt back pockets, and direct embroidery at front left leg panel.
- 100% Cotton

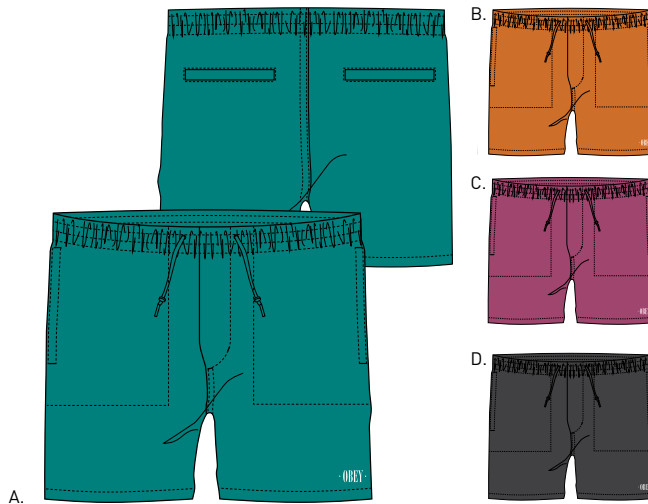


	COLOR	S	M	L	XL	XXL
A.	TEAL					
B.	CORAL					

DOLO SHORT

172120020

- Regular fit
- Elastic waist crinkle nylon shorts with a tunnel through draw-cord at waistband, on seam pockets, back welt pockets, faux fly center, and embroidery at front leg panel
- 100% Nylon

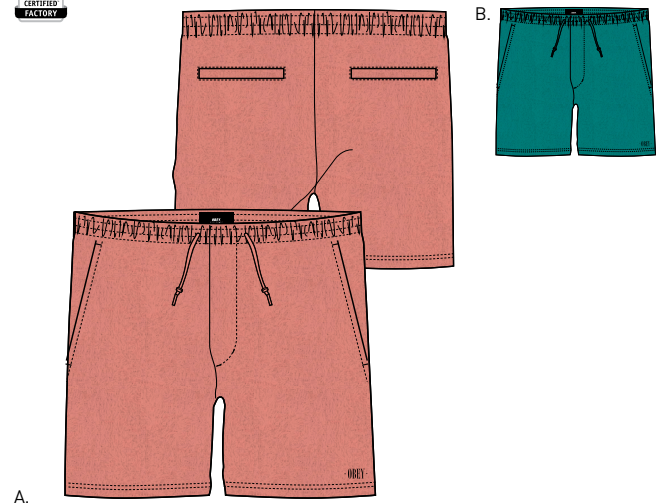


	COLOR	S	M	L	XL	XXL
A.	TEAL					
B.	ORANGE					
C.	MAGENTA					
D.	BLACK					

CATALINA SHORT

172120031

- Regular fit
- Elastic waist shorts in cotton jersey fabric with custom bleach treatment. Features a tunnel through draw-cord at waistband, faux fly, on-seam front pockets, and single welt back pockets.
- 100% Cotton



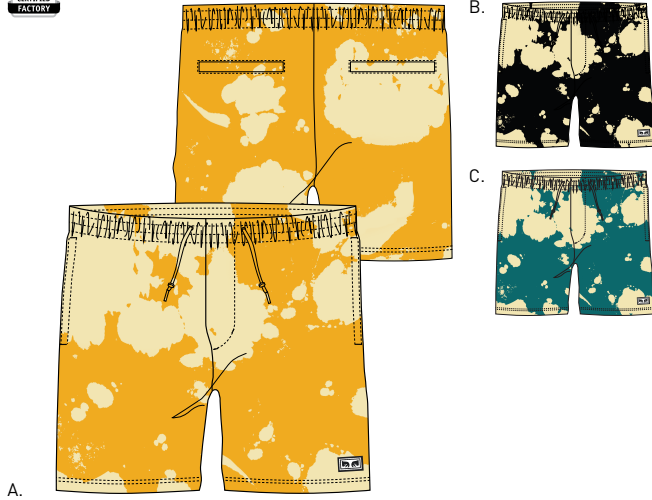
	COLOR	S	M	L	XL	XXL
A.	PALE CORAL					
B.	TEAL					

SHORTS

PALOMA SHORT

172120032

- Regular fit
- Elastic waist shorts in cotton jersey fabric with custom bleach treatment. Features a tunnel through drawcord at waistband, faux fly, on-seam front pockets, and single welt back pockets.
- 100% Cotton

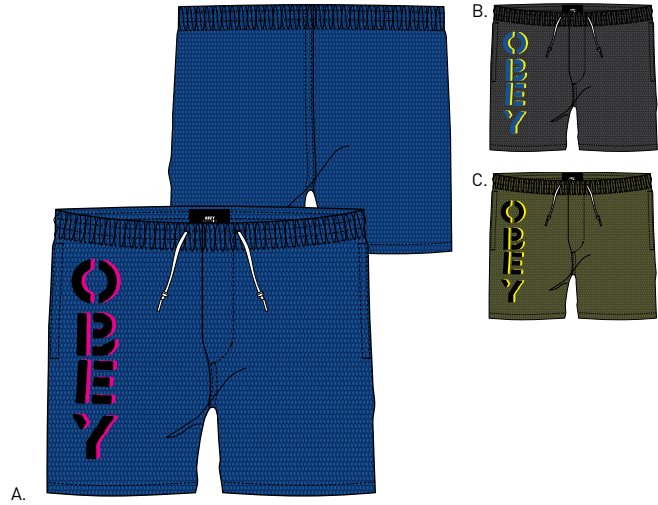


	COLOR	S	M	L	XL	XXL
A.	YELLOW MULTI					
B.	BLACK MULTI					
C.	TEAL MULTI					

NICE DAY ATHLETIC SHORT

172120035

- Regular fit
- Elastic waist shorts in polyester athletic mesh fabric. Features a tunnel through drawcord at waistband, faux fly, on-seam front pockets with topstitch detail, and a custom screenprint at front right leg panel.
- 100% Polyester



	COLOR	S	M	L	XL	XXL
A.	BRIGHT BLUE					
B.	BLACK					
C.	ARMY					

HEAVYWEIGHT EYES SPORTS SHORT

172120036

- Relaxed fit
- Elastic waist cotton jersey shorts in heavyweight, garment dyed fabric. Features a tunnel through drawcord at waistband and slash front pockets.
- Made in USA
- 100% Cotton

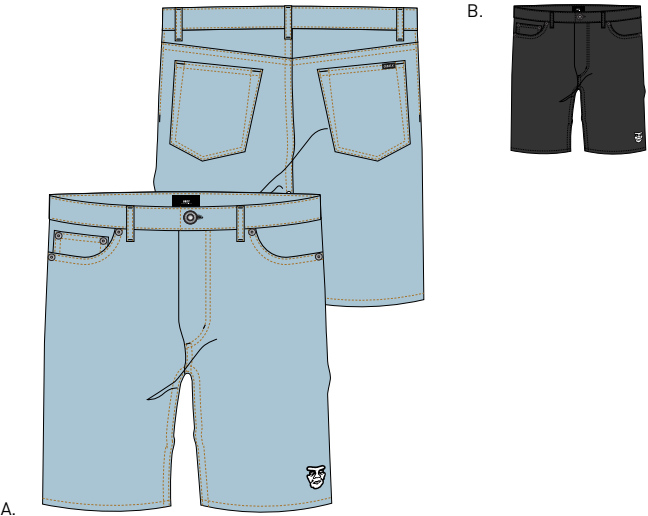


	COLOR	S	M	L	XL	XXL
A.	AQUA MARINE					
B.	OFF BLACK					
C.	APRICOT					
D.	ROYAL BLUE					
E.	SPECTRA YELLOW					
F.	VINTAGE GREEN					

BENDER DENIM SHORT

172100067

- Classic fit
- Denim walk shorts in 12.5oz. cotton denim fabric with custom wash treatment and classic five-pocket styling. Features two-piece fixed waistband, zipper fly closure, custom hardware details, and a direct embroidery at front left leg panel.
- 100% Cotton



	COLOR	28	30	31	32	33	34	36	38
A.	LIGHT INDIGO								
B.	TRUE BLACK								

HAWKWIND DENIM SHORT

172100068

- Shorter length classic fit
- Denim walk shorts in 12.5oz. cotton denim fabric with custom wash treatment, raw finished hem, and classic five pocket styling. Features a two-piece fixed waistband, zipper fly closure, custom hardware details, and direct embroidery at front left leg panel.
- 100% Cotton



	COLOR	28	30	31	32	33	34	36	38
A.	BLEACHED BLACK								
B.	BLEACHED INDIGO								



PANTS



142020104 STRAGGLER CARPENTER PANT III

STRAGGLER
SLIM FIT

- SITS BELOW WAIST
- SLIM SEAT AND THIGH
- SLIGHT TAPERED LEG
- FLOODED INSEAM
- 15" LEG OPENING

SITS BELOW WAIST

SLIGHT TAPER AT LEG

15" LEG OPENING

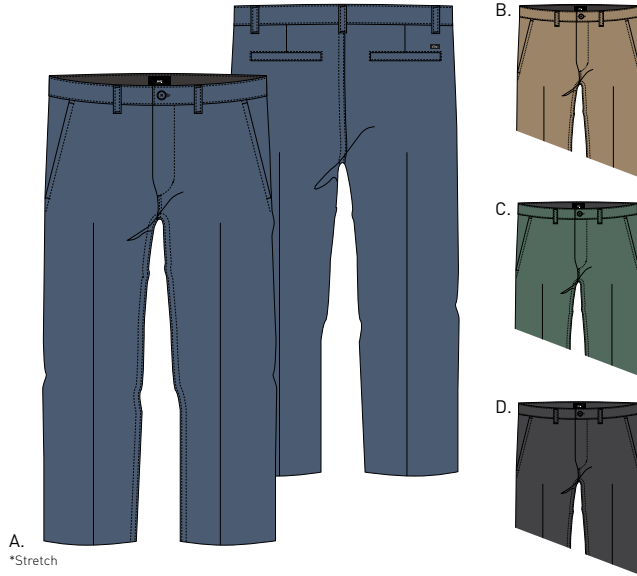


STRAGGLER SLIM FIT

STRAGGLER FLOODED PANT

142020060

- Standard fit flooded (shorter inseam) stretch twill pants with button and zipper fly closure at center front
- Features slash pockets, contrast interior details, back welt pockets and a hard pressed crease along front and back
- Includes OBEY specialty labels at exterior back pocket and interior waistband
- 60% Cotton / 39% Polyester / 1% Spandex

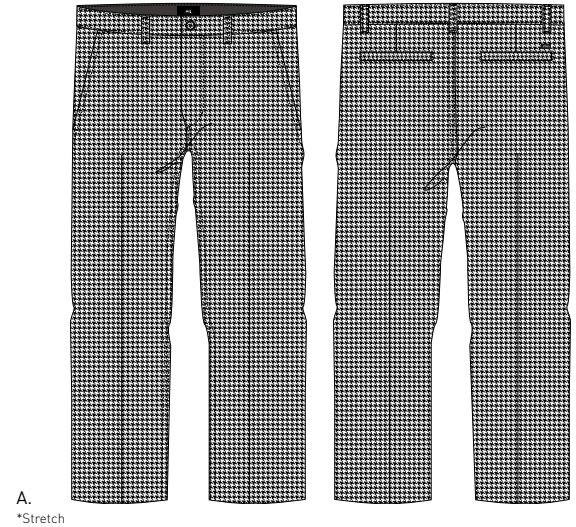


	COLOR	28	30	31	32	33	34	36	38
A.	DULL BLUE								
B.	KHAKI								
C.	DUSTY GREEN								
D.	BLACK								

STRAGGLER HOUNDSTOOTH FLOODED PANT

142020072

- Standard fit flooded (shorter inseam) printed houndstooth stretch twill pants with button and zipper fly closure at center front
- Features slash pockets, contrast interior details, back welt pockets and a hard pressed crease along front and back
- Includes OBEY specialty labels at exterior back pocket and interior waistband
- 60% Cotton / 39% Polyester / 1% Spandex



	COLOR	28	30	31	32	33	34	36	38
A.	WHITE MULTI								

STRAGGLER STRIPE FLOODED PANT

142020090

- Standard fit flooded (shorter inseam) printed stripe stretch twill pants with button and zipper fly closure at center front
- Features slash pockets, contrast interior details, back welt pockets and a hard pressed crease along front and back
- Includes OBEY specialty labels at exterior back pocket and interior waistband
- 60% Cotton / 39% Polyester / 1% Spandex

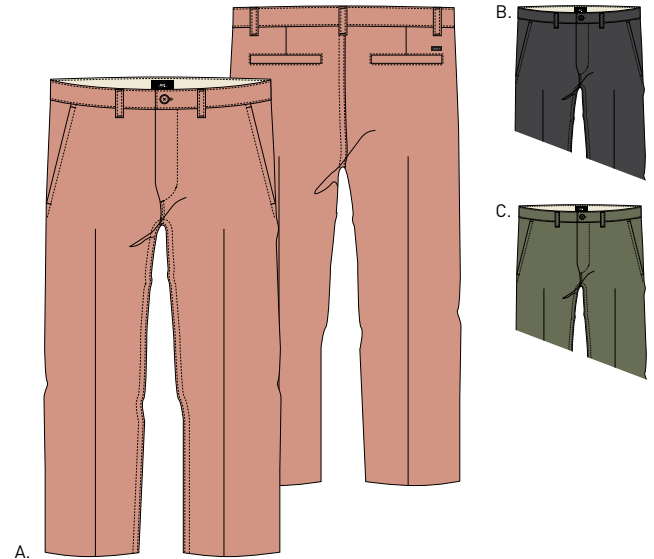


	COLOR	28	30	31	32	33	34	36	38
A.	NAVY MULTI								

STRAGGLER LIGHT FLOODED PANT

142020107

- Standard fit flooded (shorter inseam) lightweight cotton twill pant with button and zipper fly closure at center front
- Features slash front pockets, contrast interior details, back welt pockets with hard pressed crease along front and back
- Includes OBEY specialty labels at exterior back pocket and interior waistband
- 100% Cotton



	COLOR	28	30	31	32	33	34	36	38
A.	DUSTY ROSE								
B.	BLACK								
C.	LIGHT ARMY								

STRAGGLER CARPENTER SLIM FIT

- SITS BELOW WAIST
- SLIM SEAT AND THIGH
- SLIGHT TAPERED LEG
- FLOODED INSEAM
- 15" LEG OPENING



SITS BELOW WAIST

SLIGHT TAPER AT LEG

15" LEG OPENING

STRAGGLER CARPENTER PANT III

142020104

- Standard fit flooded (shorter inseam) slub twill carpenter pants with button and zipper fly closure at center front
- Features slash front pockets, carpenter style back pockets, contrast interior details, back welt pockets and a hard pressed crease along front and back
- Includes OBEY specialty labels at exterior back pocket and interior waistband
- 100% Cotton



	COLOR	28	30	31	32	33	34	36	38
A.	ARMY								
B.	BLACK								
C.	WHITE								



• SITS AT WAIST
• CLASSIC SEAT AND THIGH
• CLASSIC STRAIGHT LEG
• REGULAR INSEAM
• 18" LEG OPENING

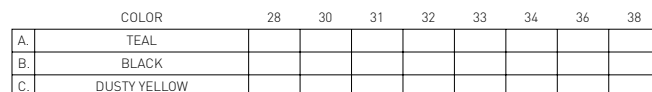
SITS AT WAIST

CLASSIC STRAIGHT LEG

18" LEG OPENING

The image displays two views of a person wearing teal-colored pants. On the left is the front view, showing a classic straight-leg fit with a regular inseam. On the right is the back view, highlighting the classic seat and thigh area. The pants feature a 18-inch leg opening. The person is also wearing black sneakers with white soles.

- Standard fit garment dyed twill pants with button and zipper fly closure at center front
- Features slash front pockets, and back welt pockets
- Includes OBEY specialty labels at exterior back pocket and interior waistband
- 100% Cotton



LAGGER CLASSIC FIT

- SITS SLIGHTLY BELOW WAIST
- CLASSIC SEAT AND THIGH
- CLASSIC STRAIGHT LEG
- FLOODED INSEAM
- 17" LEG OPENING



SITS SLIGHTLY BELOW LEG

CLASSIC STRAIGHT LEG

17" LEG OPENING

LAGGER PATCH POCKET PANT

142020086

- Relaxed fit flooded (shorter inseam) military influenced slub twill pants with button and zipper fly closure at center front
- Features on seam front pockets, contrast interior details, and back patch pockets
- Includes OBEY specialty labels at exterior back pocket and interior waistband
- 100% Cotton



A.

	COLOR	28	30	31	32	33	34	36	38
A.	ARMY								

**RECON
STANDARD FIT**



- RECON CARGO PANT

142020097
- Standard fit cotton ripstop cargo pant with button and zipper fly closure at center front
 - Features slash front pockets, adjustable waistband tabs, cargo pockets, back welt pockets, contrast interior details, reinforced knee patches, and twill tape ties at leg openings
 - Includes OBEY mil spec screen print at exterior cargo pocket flap and specialty label at interior waistband
 - 100% Cotton

A.

B.

C.

	COLOR	28	30	31	32	33	34	36	38
A.	FIELD CAMO								
B.	ARMY								
C.	BLACK								

TRAVELER
RELAXED FIT



TRAVELER SLUB TWILL PANT II

142020087

- Relaxed fit elastic waist military influenced climber pant in a heavy slub twill fabrication
- Features slash pockets, crotch gusset, back welt pockets, tunnel through draw-cord at waistband, contrast interior details and a faux fly at center front
- Includes OBEY specialty labels at wearer's back right welt pocket and interior waistband
- 100% Cotton

A.

B.

C.

D.

	COLOR	S	M	L	XL	XXL
A.	ARMY					
B.	BLACK					
C.	KHAKI					
D.	DARK INK					

EASY RELAXED FIT

- SITS BELOW WAIST
- RELAXED SEAT AND THIGH
- SLIGHT TAPERED LEG
- REGULAR INSEAM
- 15" LEG OPENING

SITS BELOW WAIST

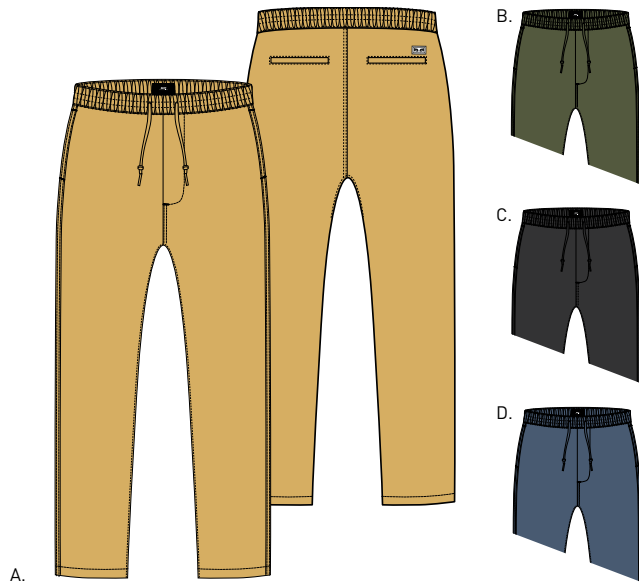
SLIGHT TAPERED LEG

15" LEG OPENING

EASY PANT

142020105

- Relaxed fit cotton poplin pant with tunnel through draw-cord and elastic waistband
- Features on seam front pockets, and back welt pockets
- Includes OBEY specialty labels at wearer's back right welt pocket and interior waistband
- 100% Cotton



	COLOR	S	M	L	XL	XXL
A.	DUSTY YELLOW					
B.	ARMY					
C.	BLACK					
D.	VINTAGE INDIGO					

EASY CAMO PANT

142020110

- Relaxed fit cotton poplin pant with all over print, tunnel through draw-cord and elastic waistband
- Features on seam front pockets, and back welt pockets
- Includes OBEY specialty labels at wearer's back right welt pocket and interior waistband
- 100% Cotton



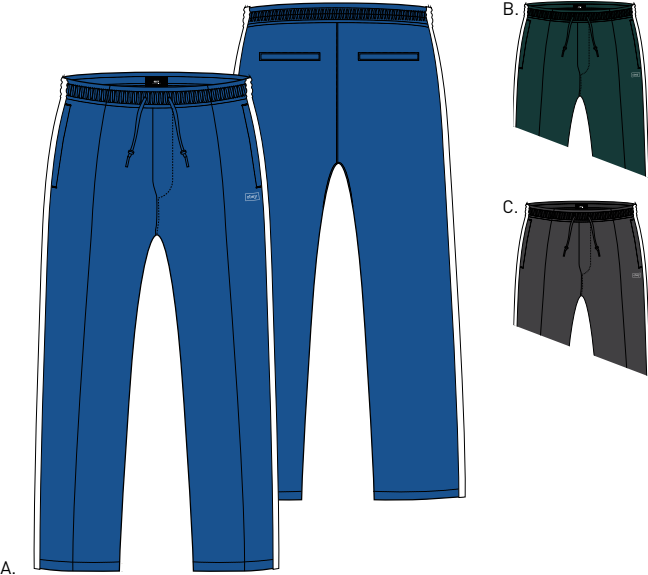
	COLOR	S	M	L	XL	XXL
A.	CHOCO CHIP CAMO					
B.	PSYCHO CAMO					
C.	FIELD CAMO					

BORSTAL TRACK PANT
RELAXED FIT



- BORSTAL TRACK PANT

142020109
- Relaxed fit tricot track pant with tunnel through draw-cord and elastic waistband
 - Features on seam front pockets, pin tuck detail at front panels, and contrast side stripes
 - Includes OBEY embroidery and specialty labels at interior waistband
 - 100% Polyester



	COLOR	XS	S	M	L	XL	XXL
A.	ROYAL						
B.	TEAL GREEN						
C.	BLACK						

PANTS FIT GUIDE

STRAGGLER PANT

- SITS BELOW WAIST
- SLIM SEAT AND THIGH
- SLIGHT TAPERED LEG
- FLOODED INSEAM
- 15" LEG OPENING

SLIM FIT



STRAGGLER CARPENTER PANT

- SITS BELOW WAIST
- SLIM SEAT AND THIGH
- SLIGHT TAPERED LEG
- FLOODED INSEAM
- 15" LEG OPENING

SLIM FIT



PANTS FIT GUIDE

HARD WORK PANT

- SITS AT WAIST
- CLASSIC SEAT AND THIGH
- CLASSIC STRAIGHT LEG
- REGULAR INSEAM
- 18" LEG OPENING

CLASSIC FIT



LAGGER PANT

- SITS SLIGHTLY BELOW WAIST
- CLASSIC SEAT AND THIGH
- CLASSIC STRAIGHT LEG
- FLOODED INSEAM
- 17" LEG OPENING

CLASSIC FIT



PANTS FIT GUIDE

RECON PANT

- SITS AT WAIST
- REGULAR SEAT AND THIGH
- REGULAR STRAIGHT LEG
- REGULAR INSEAM
- 15 1/2" LEG OPENING

STANDARD FIT



TRAVELER PANT

- SITS BELOW WAIST
- RELAXED SEAT AND THIGH
- SLIGHT TAPERED LEG
- REGULAR INSEAM
- 14 1/2" LEG OPENING

RELAXED FIT



PANTS FIT GUIDE

EASY PANT

- SITS BELOW WAIST
- RELAXED SEAT AND THIGH
- SLIGHT TAPERED LEG
- REGULAR INSEAM
- 15" LEG OPENING

RELAXED FIT



BORSTAL PANT

- SITS BELOW WAIST
- RELAXED SEAT AND THIGH
- SLIGHT TAPERED LEG
- REGULAR INSEAM
- 15" LEG OPENING

RELAXED FIT



HEADWEAR

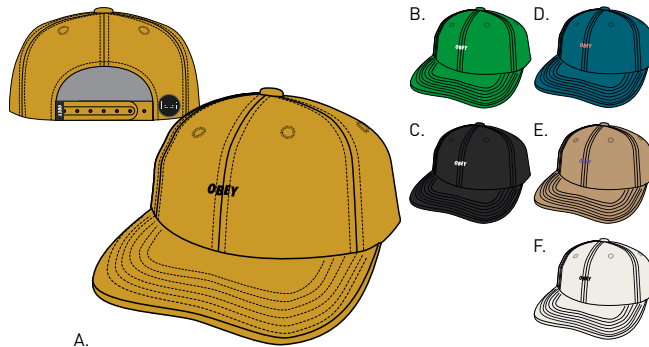


HEADWEAR

CUTTY 6 PANEL SNAPBACK

100580074

- Brushed cotton twill low profile 6 panel hat with direct embroidery, removable pin back button, plastic snap closure, and woven flag label
- 100% Cotton



	COLOR	O/S		COLOR	O/S
A.	OLD GOLD		D.	DEEP TEAL	
B.	GREEN		E.	KHAKI	
C.	BLACK		F.	WHITE	

90'S JUMBLE BAR 6 PANEL SNAPBACK

100580076

- Brushed cotton twill low profile 6 panel hat with direct embroidery, removable pin back button, plastic snap closure, and woven flag label
- 100% Cotton

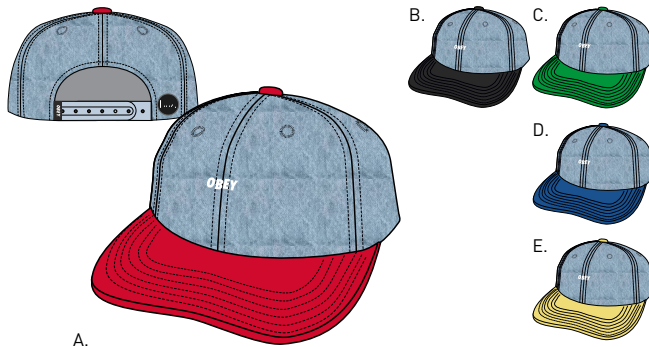


	COLOR	O/S		COLOR	O/S
A.	TEAL / BLACK		C.	NATURAL / BLACK	
B.	ROSE / ROYAL		D.	BLACK / DEEP TEAL	

WARDLOW 6 PANEL SNAPBACK

100580128

- Brushed cotton twill low profile 6 panel hat with direct embroidery, removable pin back button, plastic snap closure, and woven flag label
- 100% Cotton

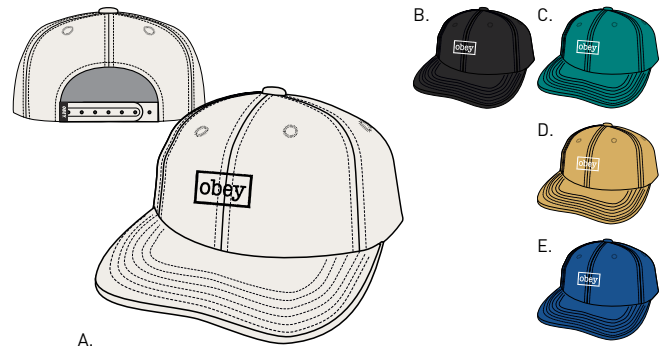


	COLOR	O/S		COLOR	O/S
A.	RED		D.	ROYAL	
B.	BLACK		E.	PALE YELLOW	
C.	GREEN				

OUTLINE 6 PANEL SNAPBACK

100580126

- Brushed cotton twill low profile 6 panel hat with direct embroidery, plastic snap closure, and woven flag label
- 100% Cotton



	COLOR	O/S		COLOR	O/S
A.	NATURAL		D.	DUSTY YELLOW	
B.	BLACK		E.	ROYAL	
C.	TEAL				

BROOKS 6 PANEL SNAPBACK

100580124

- Brushed cotton twill low profile 6 panel hat with direct embroidery, plastic snap closure, and woven flag label
- 100% Cotton

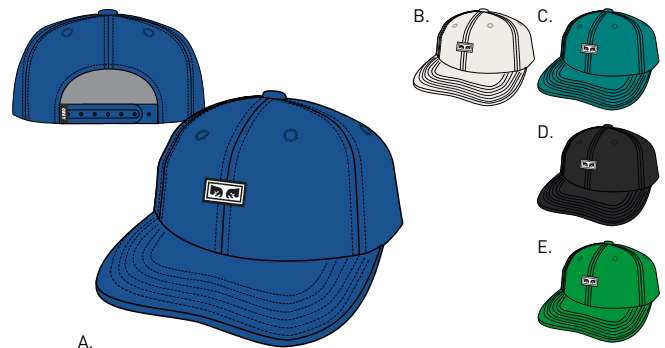


	COLOR	O/S		COLOR	O/S
A.	APPLE		C.	OFF WHITE	
B.	BONE BROWN		D.	DEEP TEAL	

SUBVERSION 6 PANEL SNAPBACK

100580086

- Brushed cotton twill low profile 6 panel snapback with direct embroidery, plastic snap closure, and woven flag label
- 100% Cotton

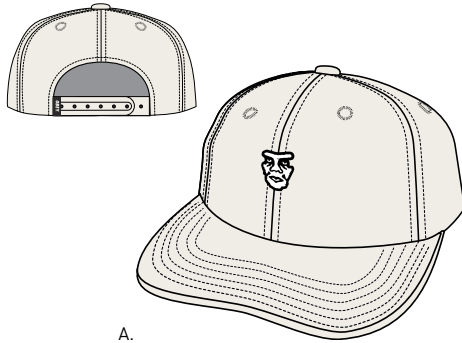


	COLOR	O/S		COLOR	O/S
A.	ROYAL		D.	BLACK	
B.	NATURAL		E.	GREEN	
C.	TEAL				

HEADWEAR

FUBAR 6 PANEL SNAPBACK

- Brushed cotton twill low profile 6 panel snapback with direct embroidery, plastic snap closure, and woven flag label
- 100% Cotton



A.

B.



C.



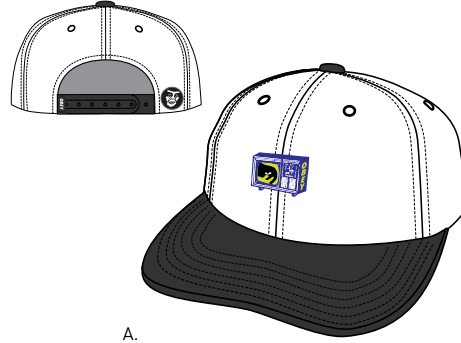
	COLOR	O/S
A.	OFF WHITE	
B.	BLACK	

	COLOR	O/S
C.	LIGHT DENIM	

100580060

BURNT 6 PANEL SNAPBACK

- Brushed cotton twill low profile 6 panel snapback with direct embroidery, plastic snap closure, removable pinback button, and woven flag label
- 100% Cotton



A.

B.



	COLOR	O/S
A.	WHITE	

	COLOR	O/S
B.	BLACK	

100580140

RESERVED 6 PANEL SNAPBACK

- Brushed cotton twill low profile 6 panel snapback with direct embroidery, plastic snap closure, removable pinback button, and woven flag label
- 100% Cotton



A.

B.



	COLOR	O/S
A.	TEAL	

	COLOR	O/S
B.	BLACK	

100580143

GOSSIP 6 PANEL SNAPBACK

- Nylon taslan low profile 6 panel snapback with direct embroidery, plastic snap closure, removable pinback button, and woven flag label
- 100% Nylon



A.

B.



C.



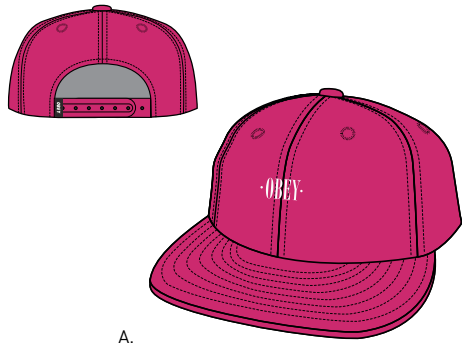
	COLOR	O/S
A.	YELLOW	
B.	BLACK	

	COLOR	O/S
C.	ROYAL	

100580142

MAXIN 6 PANEL

- Nylon taslan 6 panel snapback with direct embroidery, plastic snap closure, and woven flag label
- 100% Nylon



A.

B.



C.



	COLOR	O/S
A.	MAGENTA	
B.	TEAL	

	COLOR	O/S
C.	BLACK	

100580144

CAMPBELL 6 PANEL HAT

- Washed cotton canvas 6 panel snapback with direct embroidery, metal eyelets, plastic snap closure, and woven flag label
- 100% Cotton



A.

B.



C.



	COLOR	O/S
A.	DUSTY GREEN	
B.	LIGHT DENIM	

	COLOR	O/S
C.	BLACK	

100580130

HEADWEAR

RUNNIN 6 PANEL HAT

100580135

- Poly / Cotton twill 6 panel snapback with direct embroidery, plastic snap closure, and woven flag label
- 65% Cotton / 35% Polyester



A.

B.



C.



D.



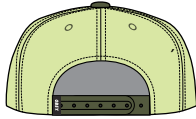
	COLOR	O/S
A.	BRIGHT BLUE	
B.	BLACK	

	COLOR	O/S
C.	SAFETY GREEN	
D.	FIELD CAMO	

BETTER DAYS 6 PANEL HAT

100580129

- Brushed cotton twill 6 panel snapback with direct embroidery, plastic snap closure, and woven flag label
- 100% Cotton



A.

B.



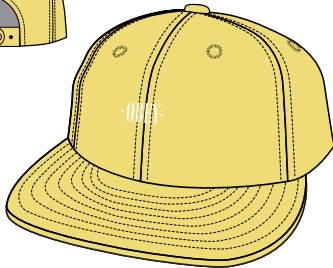
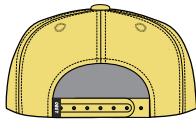
	COLOR	O/S
A.	MINT	

	COLOR	O/S
B.	OFF WHITE	

ROSA 6 PANEL HAT

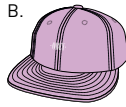
100580134

- Washed cotton canvas 6 panel snapback with direct embroidery, plastic snap closure, and woven flag label
- 100% Cotton



A.

B.



C.



D.



	COLOR	O/S
A.	PALE YELLOW	
B.	PALE PURPLE	

	COLOR	O/S
C.	MINT	
D.	LIGHT DENIM	

RESIST 6 PANEL HAT

100580133

- Poly / Cotton twill 6 panel snapback with woven label patch, plastic snap closure, and woven flag label
- 65% Cotton / 35% Polyester



A.

B.



C.



D.



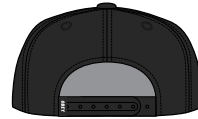
	COLOR	O/S
A.	FIELD PURPLE CAMO	
B.	CHOCO CHIP CAMO	

	COLOR	O/S
C.	FIELD CAMO	
D.	FIELD ORANGE CAMO	

QUIET 6 PANEL HAT

100580132

- Washed cotton canvas 6 panel snapback with woven label patch, plastic snap closure, and woven flag label
- 100% Cotton



A.

B.



C.



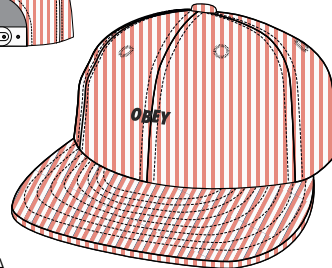
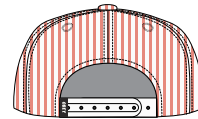
	COLOR	O/S
A.	BLACK	
B.	TEAL	

	COLOR	O/S
C.	DUSTY YELLOW	

CYPRESS 6 PANEL HAT

100580131

- Cotton seersucker 6 panel snapback with direct embroidery, plastic snap closure, and woven flag label
- 100% Cotton



A.

B.



C.



	COLOR	O/S
A.	CORAL	
B.	TEAL	

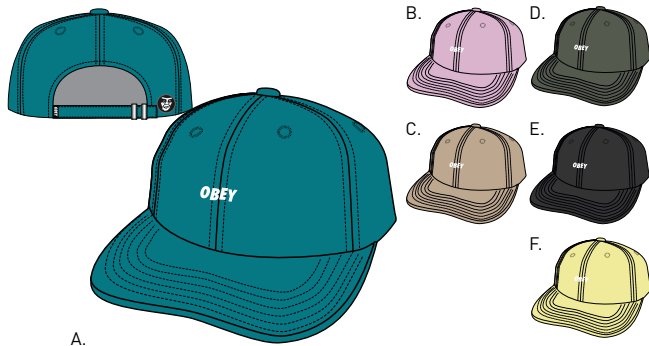
	COLOR	O/S
C.	BLACK	

HEADWEAR

JUMBLE BAR III 6 PANEL HAT

100580071

- Cotton twill low profile 6 panel snapback with direct embroidery, removable pin back button, self fabric slider closure, and woven flag label
- 100% Cotton

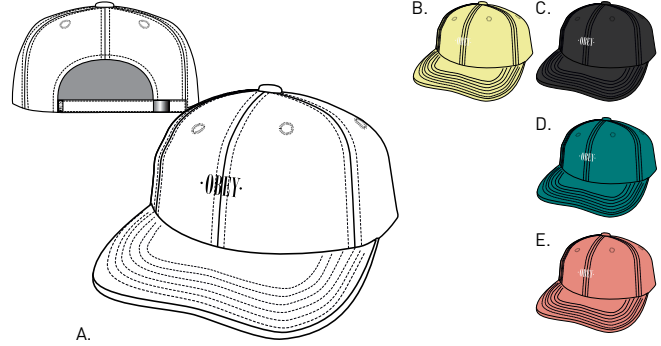


COLOR		O/S	COLOR		O/S
A.	TEAL		D.	ARMY	
B.	PALE PURPLE		E.	BLACK	
C.	KHAKI		F.	PALE YELLOW	

CRESS 6 PANEL HAT

100580136

- Washed cotton canvas 6 panel snapback with direct embroidery, self fabric compression closure and woven flag label
- 100% Cotton



COLOR		O/S	COLOR		O/S
A.	WHITE		D.	TEAL	
B.	PALE YELLOW		E.	PALE CORAL	
C.	BLACK				

ESTABLISHED 89 SNAPBACK II

100570051

- Cotton twill 5 panel snapback with embroidered patch, plastic snap closure, and woven flag label
- 100% Cotton



COLOR		O/S	COLOR		O/S
A.	BLACK		C.	DUSTY BLUE	
B.	DUSTY GREEN				

BURDEN SNAPBACK

100570074

- Cotton twill 5 panel snapback with embroidered patch, plastic snap closure, and woven flag label
- 100% Cotton



COLOR		O/S	COLOR		O/S
A.	FIELD CAMO		B.	BLACK	

OUT THERE SNAPBACK

100570076

- Cotton twill 5 panel snapback with custom screen print, plastic snap closure, and woven flag label
- 100% Cotton



COLOR		O/S	COLOR		O/S
A.	WHITE		B.	BLACK	

CHEERS SNAPBACK

100570077

- Cotton twill 5 panel snapback with direct embroidery, plastic snap closure, and woven flag label
- 100% Cotton



COLOR		O/S	COLOR		O/S
A.	ROYAL		B.	BLACK	

HEADWEAR

WORLDWIDE PROP. SNAPBACK II

- Cotton twill 5 panel snapback with direct embroidery, plastic snap closure, and woven flag label
- 100% Cotton



A.

B.



C.

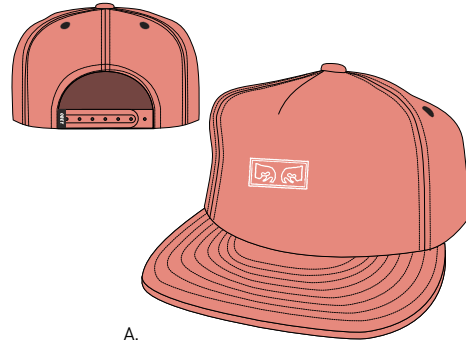


	COLOR	O/S
A.	NAVY	
B.	BLACK	

	COLOR	O/S
C.	LIGHT SPRUCE	

SUBVERSION SNAPBACK II

- Cotton twill 5 panel snapback with direct embroidery, plastic snap closure, and woven flag label
- 100% Cotton



A.

B.



C.



	COLOR	O/S
A.	PALE CORAL	
B.	BLACK	

	COLOR	O/S
C.	TEAL GREEN	

SHOUT SNAPBACK

- Cotton / polyester twill 5 panel snapback with woven label patch, plastic snap closure, and woven flag label
- 60% Cotton / 40% Polyester



A.

B.



	COLOR	O/S
A.	ORANGE	

	COLOR	O/S
B.	BLACK	

CLASSIC PATCH SNAPBACK

- Cotton / polyester twill 5 panel snapback with embroidered patch, plastic snap closure, and woven flag label
- 60% Cotton / 40% Polyester



A.

B.



C.



D.



	COLOR	O/S
A.	BURGUNDY	
B.	OLIVE	

	COLOR	O/S
C.	BLACK	
D.	FADED NAVY	

QUIET TRUCKER HAT

- Cotton canvas 6 panel trucker hat with woven label patch, plastic snap closure, and woven flag label
- 100% Cotton



A.

B.



	COLOR	O/S
A.	DUSTY GREEN	

	COLOR	O/S
B.	BLACK	

HEADWEAR

RUNNIN TRUCKER HAT

- Poly / Cotton twill 6 panel trucker hat with direct embroidery, plastic snap closure, and woven flag label
- 65% Cotton / 35% Polyester



A.

B.



C.



	COLOR	O/S
A.	FIELD CAMO	
B.	BLACK	

	COLOR	O/S
C.	SAFETY GREEN	

100500014

VISTA TRUCKER HAT

- Cotton twill trucker hat with direct embroidery, plastic snap closure, and woven flag label
- 100% Cotton



A.

B.



C.



D.



	COLOR	O/S
A.	GOLD	
B.	BLACK	

	COLOR	O/S
C.	RED	
D.	BLUE	

100500012

ESTABLISHED 89 TRUCKER II

- Cotton twill trucker hat with embroidered patch, plastic snap closure, and woven flag label
- 100% Cotton



A.

B.



	COLOR	O/S
A.	DUSTY BLUE	

	COLOR	O/S
B.	BLACK	

100500011

ELDEN FLEXFIT HAT

- Stretch cotton twill custom fit 6 panel hat with direct embroidery
- 98% Cotton / 2% Spandex



A.

B.



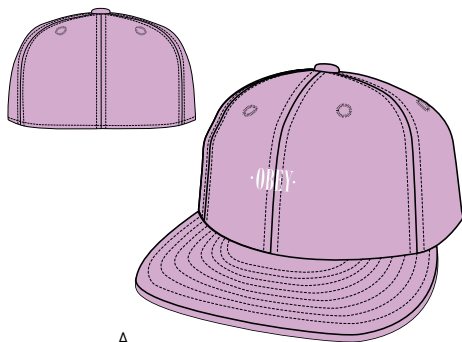
	COLOR	O/S
A.	BLACK	

	COLOR	O/S
B.	LIGHT DENIM	

100140435

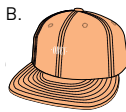
BIRCH FLEXFIT HAT

- Stretch cotton twill custom fit 6 panel hat with direct embroidery
- 98% Cotton / 2% Spandex



A.

B.



C.



	COLOR	O/S
A.	PALE PURPLE	
B.	PALE ORANGE	

	COLOR	O/S
C.	BLACK	

100140437

RUNNIN FLEXFIT HAT

- Stretch cotton twill custom fit 6 panel hat with direct embroidery
- 98% Cotton / 2% Spandex



A.

B.



	COLOR	O/S
A.	FIELD CAMO	

	COLOR	O/S
B.	BLACK	

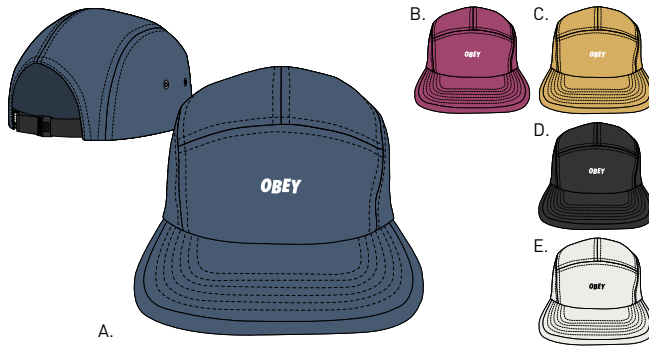
100140438

HEADWEAR

JUMBLE BAR 5 PANEL HAT

100490047

- Washed cotton canvas 5 panel camp hat with direct embroidery, web closure, and woven flag label
- 100% Cotton



	COLOR	O/S
A.	VINTAGE INDIGO	
B.	MAGENTA	
C.	DUSTY YELLOW	

	COLOR	O/S
D.	BLACK	
E.	OFF WHITE	

CONTRAST JUMBLE 5 PANEL HAT

100490046

- Brushed cotton twill 5 panel camp hat with direct embroidery, web closure, and woven flag label
- 100% Cotton



	COLOR	O/S
A.	TEAL	
B.	ORANGE	

	COLOR	O/S
C.	BLACK	
D.	DUSTY YELLOW	

SUBVERSION 5 PANEL HAT

100490048

- Cotton twill 5 panel camp hat with woven label patch, web closure, and woven flag label
- 100% Cotton



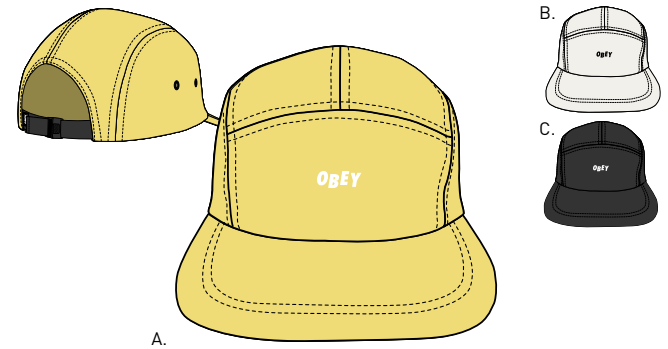
	COLOR	O/S
A.	CHOCO CHIP CAMO	
B.	BLACK	

	COLOR	O/S
C.	FIELD CAMO	

DECADES 5 PANEL HAT

100490045

- Washed cotton canvas 5 panel camp hat with direct embroidery, self fabric compression closure, and woven flag label
- 100% Cotton



	COLOR	O/S
A.	PALE YELLOW	
B.	NATURAL	

	COLOR	O/S
C.	BLACK	

DECADES BUCKET HAT

100520013

- Washed cotton canvas 6 panel bucket hat with direct embroidery
- 100% Cotton



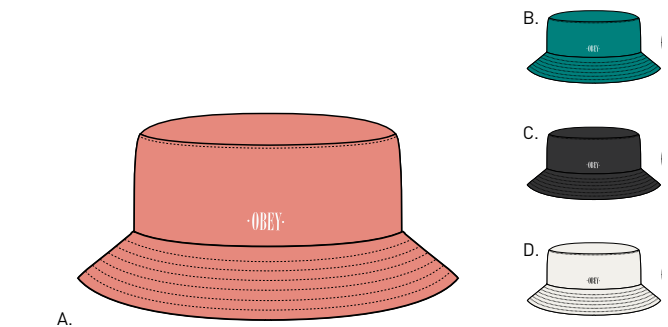
	COLOR	O/S
A.	NATURAL	
B.	BLACK	

	COLOR	O/S
C.	PALE YELLOW	

RESPECT BUCKET HAT

100520014

- Washed cotton twill bucket hat with direct embroidery
- 100% Cotton



	COLOR	O/S
A.	CORAL	
B.	TEAL	

	COLOR	O/S
C.	BLACK	
D.	NATURAL	

BEANIES

MICRO BEANIE

- Chunky knit extra shallow cuff beanie with removable metal pin
- 100% Acrylic

100030125



	COLOR	O/S
A.	MAGENTA	
B.	BRIGHT GREEN	

	COLOR	O/S
C.	BLACK	
D.	WHITE	

HANGMAN BEANIE

- Extra shallow tight knit cuffed beanie with direct embroidery centered on front of cuff
- 100% Acrylic

100030102



	COLOR	O/S
A.	DUSTY ROSE	
B.	TEAL	

	COLOR	O/S
C.	YELLOW	
D.	BLACK	



LEATHER ACCESSORIES



LEATHER ACCESSORIES

VANDAL BI FOLD WALLET

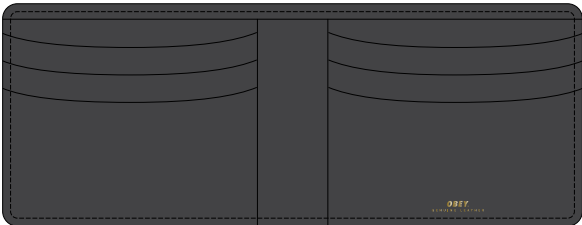
- Bi-fold wallet with multiple card holder and bill insert pocket
- OBEY gold foil branding and OBEY original gold rivet
- 100% Genuine Leather

100310088

VANDAL ID WALLET

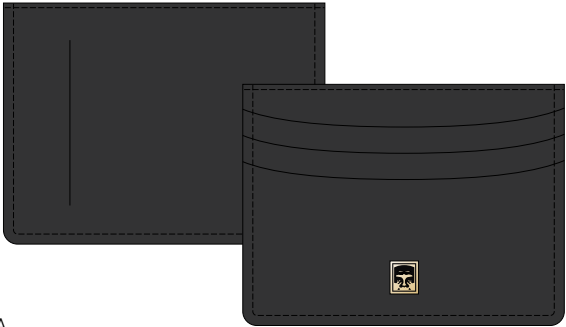
- ID wallet with multiple card holder
- OBEY original gold rivet branding
- 100% Genuine Leather

100310087



A.

	COLOR	O/S		
A.	BLACK			



A.

	COLOR	O/S		
A.	BLACK			

VANDAL LEATHER BELT

- Leather belt with antique brass hardware
- OBEY original gold rivet branding and interior gold foil logo
- 100% Genuine Leather

100050025



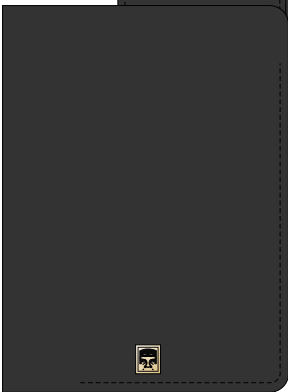
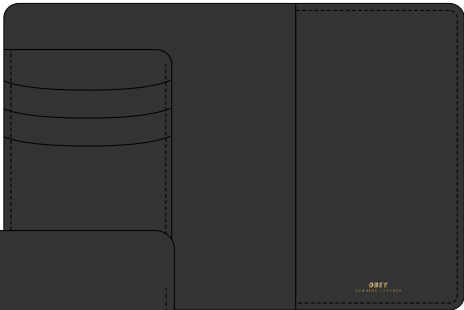
A.

	COLOR	S	M	L
A.	BLACK			

VANDAL PASSPORT WALLET

- Passport wallet with multiple card holder and large insert pockets for passport and boarding pass
- OBEY gold foil branding and OBEY original gold rivet
- 100% Genuine Leather

100310089



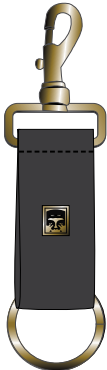
A.

	COLOR	O/S		
A.	BLACK			

VANDAL LEATHER KEY CHAIN

- Key chain with gold finish hardware
- OBEY original gold rivet branding
- 100% Genuine Leather

100160015



A.

	COLOR	O/S		
A.	BLACK			

BAGS & ACCESSORIES



BAGS & ACCESSORIES

DROP OUT JUVEE BACKPACK

100010096

- Backpack with an original OBEY patch, zipper front pocket, internal laptop sleeve, large main compartment, and padded shoulder straps for comfort
- Chrome finished hardware and zipper pulls
- 100% Polyester



	COLOR	O/S		
A.	SAFETY GREEN			
B.	BLACK			
C.	ORANGE FIELD CAMO			
D.	FIELD CAMO			

DROP OUT WEEKENDER DUFFEL

100010092

- Large tote bag with webbing straps
- Features a zipper top closure with exterior pocket with black coil zipper and black hardware and an OBEY original patch
- 100% Polyester

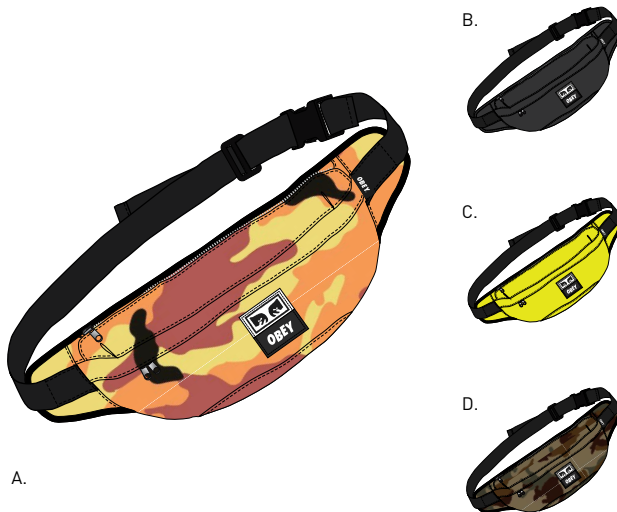


	COLOR	O/S		
A.	FIELD CAMO			
B.	ORANGE FIELD CAMO			
C.	BLACK			
D.	SAFETY GREEN			

DROP OUT SLING BAG

100010093

- Original OBEY patch sling bag with multiple pockets and a sturdy plastic closure webbing strap to wear comfortably over the shoulders or waist
- Chrome finished hardware with zipper pulls
- 100% Polyester



	COLOR	O/S		
A.	ORANGE FIELD CAMO			
B.	BLACK			
C.	SAFETY GREEN			
D.	FIELD CAMO			

WASTED HIP BAG

100010098

- Single pocket hip bag with zipper opening, adjustable webbing strap and sturdy plastic hardware closure
- Features an original OBEY icon eye and jumble woven patch for branding offered in multiple print
- 100% Cotton



	COLOR	O/S		
A.	TEAL MULTI			
B.	DENIM			
C.	FIELD CAMO			
D.	TEAL/WHITE			

BAGS & ACCESSORIES

DROP OUT TRAVELER BAG

100010094

- Small essential bag with multiple pockets and adjustable shoulder strap
- Features a double compartment at center with zip closures and outside pockets with OBEY original patch
- 100% Polyester



	COLOR	O/S		
A.	BLACK			
B.	FIELD CAMO			
C.	ORANGE FIELD CAMO			
D.	SAFETY GREEN			

DROP OUT UTILITY SMALL BAG

100010095

- Small urban utility bag with carabiner clip hook
- Features one compartment zip pocket and front velcro closure pocket
- Carabiner clip hook at top and a belt loop at back for multiple usage
- OBEY original patch for branding and laser engraved logo on hook
- 100% Polyester



	COLOR	O/S		
A.	SAFETY GREEN			
B.	ORANGE FIELD CAMO			
C.	BLACK			
D.	FIELD CAMO			

DROP OUT TRI-FOLD WALLET

100310099

- Tri-fold wallet with multiple card slots, clear ID window and an exterior OBEY original patch
- Chrome key ring and black grosgrain edging
- 100% Polyester



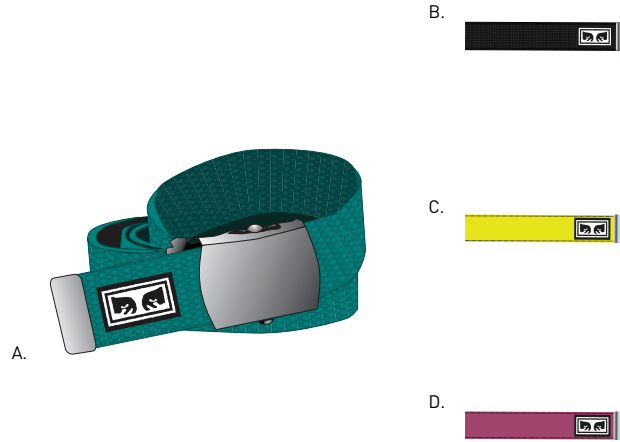
	COLOR	O/S		
A.	ORANGE FIELD CAMO			
B.	SAFETY GREEN			
C.	FIELD CAMO			
D.	BLACK			

BELTS & TOTES

BIG BOY BELT

100050026

- Adjustable webbing belt with antique silver hardware and a OBEY original label
- 60% Cotton / 40% Polyester



	COLOR	O/S		
A.	TEAL			
B.	BLACK			
C.	SAFETY GREEN			
D.	MAGENTA			

ICON BRAIDED ELASTIC BELT

100050027

- Braided elastic belt with faux leather trims and black hardware
- Features OBEY original art stamped at faux leather tip and one pin roller belt buckle
- 100% Polyester



	COLOR	S/M	M/L	
A.	BLACK			

OBEY TARGET EXCEPTIONS TOTE BAG

100551733

- Large one compartment tote bag with natural webbing handle
- Features an original OBEY artwork
- 20" x 15" x 5"
- 100% Cotton



	COLOR	O/S		
A.	NATURAL			
B.	BLACK			

DREAMS TOTE BAG

100551741

- Large one compartment tote bag with natural webbing handle
- Features an original OBEY artwork
- 20" x 15" x 5"
- 100% Cotton



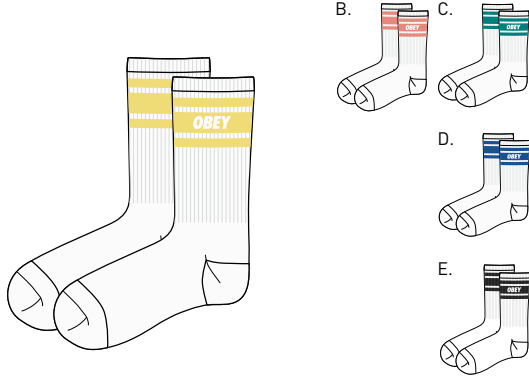
	COLOR	O/S		
A.	BLACK			
B.	NATURAL			

SOCKS

COOPER II SOCKS

- Athletic socks with comfortable French terry footing
- OBEY original logo jacquard
- 85% Cotton / 13% Polyester / 2% Elastane

100260093

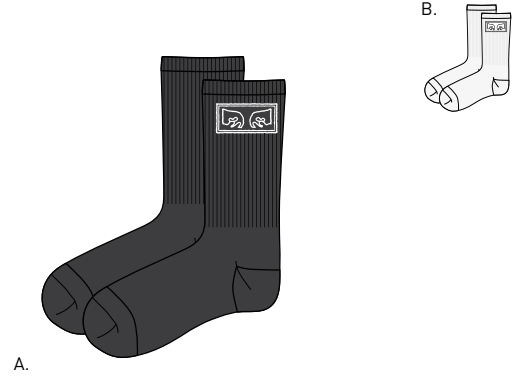


COLOR		O/S	COLOR		O/S
A.	WHITE / YELLOW		D.	WHITE / ROYAL	
B.	WHITE / CORAL		E.	WHITE / BLACK	
C.	WHITE / TEAL				

OBEY EYES SOCKS

- Athletic socks with comfortable French terry footing
- OBEY original These Eyes embroidery
- 85% Cotton / 13% Polyester / 2% Elastane

100260116

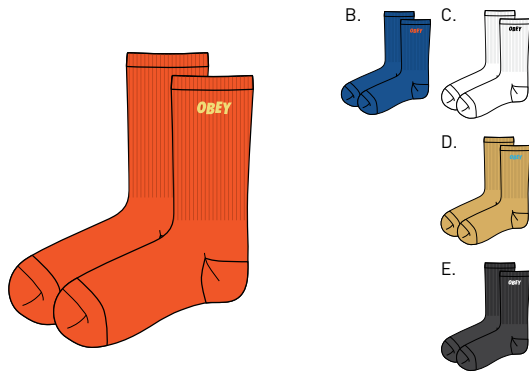


COLOR		O/S	COLOR		O/S
A.	BLACK		B.	WHITE	

OBEY JUMBLED SOCK

- Athletic socks with comfortable French terry footing
- OBEY original Jumble embroidery
- 85% Cotton / 13% Polyester / 2% Elastane

100260089

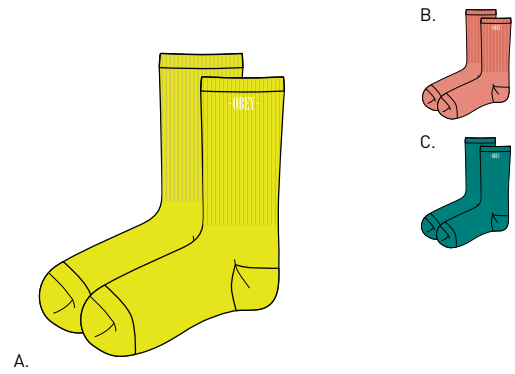


COLOR		O/S	COLOR		O/S
A.	ORANGE / YELLOW		D.	YELLOW / COOL BLUE	
B.	ROYAL / ORANGE		E.	BLACK	
C.	WHITE				

NEW TIMES EMBROIDERY SOCKS

- Athletic socks with comfortable French terry footing
- OBEY original logo embroidery
- 85% Cotton / 13% Polyester / 2% Elastane

100260111



COLOR		O/S	COLOR		O/S
A.	SAFETY GREEN / WHITE		C.	TEAL / WHITE	
B.	CORAL / WHITE				

DALE SOCKS

- Athletic socks with comfortable French terry footing
- Features a multicolor stripe and OBEY original logo embroidery
- 85% Cotton / 13% Polyester / 2% Elastane

100260119



COLOR		O/S	COLOR		O/S
A.	MAGENTA / WHITE		C.	BLACK / WHITE	
B.	TEAL / WHITE				

ASHED OUT SOCKS

- Fashion socks construction
- Features an OBEY original flower jacquard print and embroidery
- 70% Cotton / 28% Polyester / 2% Elastane

100260120

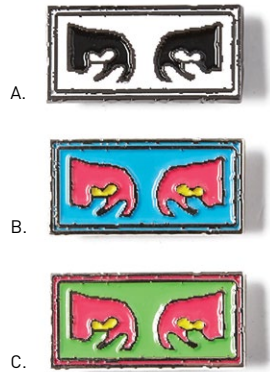


COLOR		O/S			
A.	TEAL MULTI				

PINS

OBEY EYES PIN

- OBEY Eyes pin with alloy finish enamel colored metal
- 2 locking backs to keep pin in place
- 100% Alloy



	COLOR	O/S
A.	BLACK / WHITE	
B.	BLUE MULTI	

	COLOR	O/S
C.	GREEN MULTI	

CHAIN SMILE PIN

- OBEY pin with silver alloy finish enamel colored metal
- 2 locking backs to keep pin in place
- 100% Alloy



	COLOR	O/S
A.	BLACK	

BOOGIE ICON PIN

- OBEY pin with silver alloy finish enamel colored metal
- 2 locking backs to keep pin in place
- 100% Alloy



	COLOR	O/S
A.	BLACK	

100220036

OBEY BETTER DAYS PIN

- OBEY pin with silver alloy finish enamel colored metal
- 2 locking backs to keep pin in place
- 100% Alloy

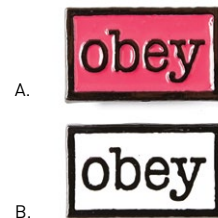


	COLOR	O/S
A.	YELLOW / RED	

	COLOR	O/S
B.	BLUE / ORANGE	

OBEY TYPE PIN

- OBEY pin with gunmetal alloy finish enamel colored metal
- 2 locking backs to keep pin in place
- 100% Alloy



	COLOR	O/S
A.	MAGENTA / BLACK	

	COLOR	O/S
B.	WHITE / BLACK	

FLAG PIN

- OBEY pin with gold alloy finish enamel colored metal
- 2 locking backs to keep pin in place
- 100% Alloy



	COLOR	O/S
A.	RED	

100220040

100220042

100220030

PINS

OBEY 8 BALL ICON PIN

- OBEY 8 Ball pin with silver alloy finish enamel colored metal
- 2 locking backs to keep pin in place
- 100% Alloy

100220038

CREEPER PIN

- OBEY Creeper gold alloy finish enamel colored metal
- 2 locking backs to keep pin in place
- 100% Alloy

100220013



	COLOR	O/S		
A.	BLACK MULTI			

	COLOR	O/S		
A.	WHITE			

CIRCLE 89 PIN

- OBEY pin with silver alloy finish enamel colored metal
- 2 locking backs to keep pin in place
- 100% Alloy

100220025

EIGHTY NINE PIN

- OBEY Eighty Nine pin with gold alloy finish enamel colored metal
- 2 locking backs to keep pin in place
- 100% Alloy

100220011



	COLOR	O/S		
A.	BLACK			

	COLOR	O/S		
A.	WHITE			

O.B.E.Y. PIN

- OBEY pin with silver alloy finish enamel colored metal
- 2 locking backs to keep pin in place
- 100% Alloy

100220022



	COLOR	O/S		
A.	BLACK			

ESSENTIALS

STICKER PACK 4

- Assorted stickers for the OBEY fiends. Spread it!

100270007

STICKER PACK 2

- Assorted stickers for the OBEY fiends. Spread it!

100270001



A.



A.

	COLOR	O/S		
A.	ASSORTED			

	COLOR	O/S		
A.	ASSORTED			

COVERT TO OVERT BOOK

326000035M

- OBEY: Covert to Overt showcases Shepard Fairey's evolution from works on paper to grander art installations, cross-cultural artworks, and music/art collaborations. The book also includes his ubiquitous streetwear and chronicles his return to public artworks. His signature blend of politics, street culture, and art makes Fairey unlike any other subculture/street artist working today.
- This book showcases the significant amount of art he has created the last several years: street murals, mixed-media installations, art/music events, countless silk screens, and work from his extremely successful OBEY brand.



A.

	COLOR	O/S		
A.	ASSORTED			

VISUAL PROPAGANDA



326000123 UNWRITTEN FUTURE POP

P.O.P.

OBEY ARROW POP

- Wood table top display
- Featuring a wheat pasted OBEY Arrow graphic
- 14" H X 7" W



A.

COLOR		O/S	
A.	ASSORTED		

326000122

UNWRITTEN FUTURE POP

- Wood table top display
- Featuring a wheat pasted Unwritten Future graphic
- 14" H X 7" W



A.

COLOR		O/S	
A.	ASSORTED		

326000123

CHILDREN INCORPORATED INC. STAND

- Wood table top display
- Featuring art and description of Children Inc. Awareness graphic
- Used for Spring 2018 and Summer 2018 seasons
- 14" H X 7" W



A.

COLOR		O/S	
A.	ASSORTED		

326000127

CHILDREN INCORPORATED INC. INSERT

- Wood insert for OBEY Awareness Base 32600004
- Featuring art and description of Children Inc. Awareness graphic
- Used for Spring 2018 and Summer 2018 seasons



A.

COLOR		O/S	
A.	ASSORTED		

326000128

OBEY PIN PACK 5

- 50 1" pins
- Featuring seasonal OBEY artwork. Perfect for hooking customers up at checkout



A.

COLOR		O/S	
A.	ASSORTED		

326000124



CHILDREN

INCORPORATED

OBHEY AWARENESS CHILDREN INCORPORATED



Children Incorporated is a 501 (c) 3 nonprofit organization that provides assistance to children in 23 countries around the world, including the U.S. For more than 50 years, our organization has helped offer sustainable solutions for children to receive food, clothing, and healthcare. We envision a world in which all children have access to education, hope, and opportunity. By meeting basic needs and providing affirmation and encouragement, we are empowering children to grow and ultimately break the cycle of poverty. To date, we have reached over 250,000 in 300 projects around the globe.

CHILDREN INC.

165361710

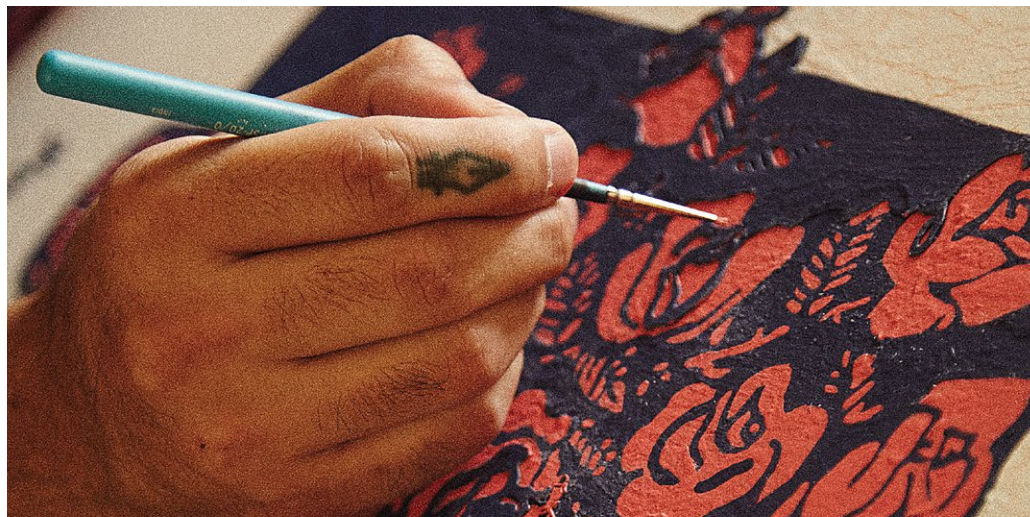
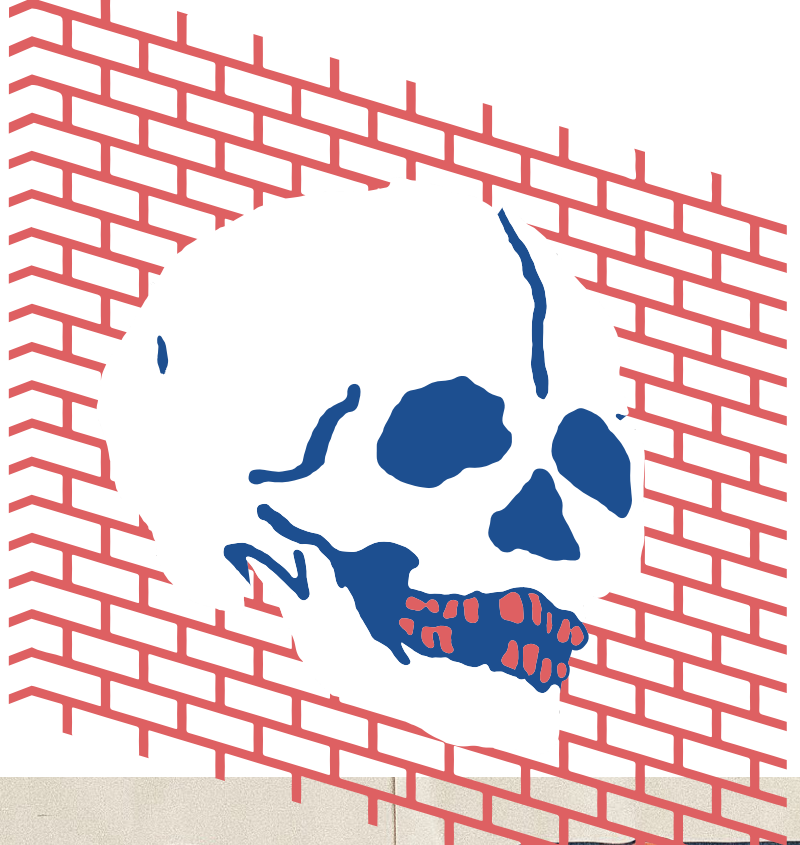
- Premium Tee with soft light weight fabrication
- Feature OBHEY Children Inc Awareness screen print
- 100% Cotton



	COLOR	S	M	L	XL	XXL
A.	NAVY					
B.	WHITE					

OBHEY
AWARENESS

OBHEY AWARENESS WAS FOUNDED IN 2007 AS A WAY TO EDUCATE AND FUNDRAISE FOR CAUSES AND ORGANIZATIONS OBHEY SUPPORTS. IT IS A UNIQUE PROGRAM IN THAT IT CONSTANTLY EVOLVES TO SUPPORT IMPORTANT EMERGING ISSUES AND ORGANIZATIONS. EACH SEASON THE OBHEY CLOTHING LINE FEATURES DEDICATED PRODUCT TO RAISE FUNDS FOR THESE CAUSES. ALL PROFITS GENERATED FROM THE SALE OF OBHEY AWARENESS PRODUCT ARE DONATED TO THE CAUSE AT HAND. WE ENCOURAGE YOU TO LEARN MORE AND MAKE A DIFFERENCE.





NEVER —MADE—

SUMMER ARTIST SERIES

Los Angeles based artist Francisco Reyes, Jr., is better known by his alias Never Made. For over a decade, Francisco has been pursuing his passion in Graphic Design. His experience as a musician in his late teens and early 20s taught him the value of hard work. Coupled with his involvement in the skateboarding scene as well, Francisco's unwavering DIY ethic continues to stress the importance of building from the ground up. After graduating from college with a degree in Graphic Design, Francisco was unable to find a job in his field. Working odd jobs by day and refining his craft by night, Francisco was able to land an internship at Studio Number One with his biggest inspiration, Shepard Fairey. Working with industry giants like Shepard Fairey and Cleon Peterson only helped to cement what Francisco already knew—this was his dream job. His hard work and dedication was evident, resulting in a full time position with the company. Taking a page from Shepard's OBEY campaign, Francisco coined the alias Never Made. Under Never Made, Francisco parlays his vision through a wide range of items, including, but not limited to: lapel pins, t-shirts, sculptures, and limited edition screen prints. Aside from his work with OBEY and Never Made, Francisco has had the privilege to freelance for key brands like Rebel 8, Hurley, Primitive Skateboards, Epitaph, Hellcat Records and Urban Outfitters. While he continues to develop Never Made both as a brand and an aesthetic, he maintains the principle that things are never made, they're earned through hard work and persistence.

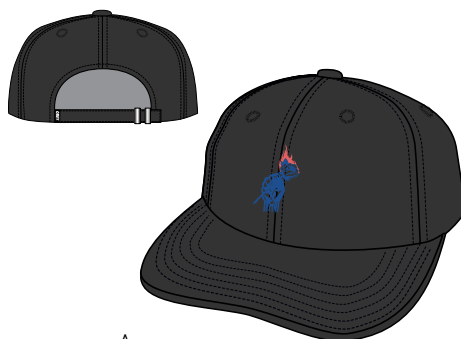




NEVER MADE ARTIST SERIES 6 PANEL HAT

100580139

- Cotton twill low profile 6 panel hat with direct embroidery, self fabric slider closure, and woven flag label
- 100% Cotton



A.

COLOR		O/S		
A.	BLACK			

ARTIST SERIES: NEVER MADE

BASIC TEE - Regular fit crew neck tee with solid rib neck trims. Made in a heavyweight cotton. SOLID: 100% Cotton; HEATHER GREY: 90% Cotton / 10% Polyester
BASIC LONG TEE - Regular fit crew neck long sleeve tee with set in rib trims. Made in a heavyweight cotton. SOLID: 100% Cotton; HEATHER GREY: 90% Cotton / 10% Polyester

PASSION NEVER MADE ARTIST SERIES

163081700

SHIPPED BY COLOR	S.	M.	L.	XL.	XXL.
------------------	----	----	----	-----	------

BLACK



PINK



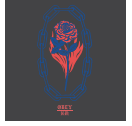
WHITE

ROSETTE NEVER MADE ARTIST SERIES

163081701

SHIPPED BY COLOR	S.	M.	L.	XL.	XXL.
------------------	----	----	----	-----	------

BLACK



WHITE



PINK

WALL OF DEATH NEVER MADE ARTIST SERIES

163081703

SHIPPED BY COLOR	S.	M.	L.	XL.	XXL.
------------------	----	----	----	-----	------

CELADON



WHITE



BLACK

LAND OF OPPORTUNITY NEVER MADE ARTIST SERIES

163081704

SHIPPED BY COLOR	S.	M.	L.	XL.	XXL.
------------------	----	----	----	-----	------

BLACK



WHITE



POWDER BLUE

PASSION NEVER MADE ARTIST SERIES

164901700

SHIPPED BY COLOR	S.	M.	L.	XL.	XXL.
------------------	----	----	----	-----	------

BLACK



WHITE



PINK

WALL OF DEATH NEVER MADE ARTIST SERIES

164901703

SHIPPED BY COLOR	S.	M.	L.	XL.	XXL.
------------------	----	----	----	-----	------

BLACK



WHITE



CELADON

PREMIUM / BASIC TEES



165361736 THE WORLD IS YOURS

PREMIUM / BASIC TEES

PREMIUM TEE - Regular fit short sleeve tee with set in rib neck trim. Made in an extra soft lightweight cotton. SOLID: 100% Cotton; HEATHER GREY: 90% Cotton / 10% Polyester
BASIC TEE - Regular fit crew neck tee with solid rib neck trims. Made in a heavyweight cotton. SOLID: 100% Cotton; HEATHER GREY: 90% Cotton / 10% Polyester



BLACK

OBEY REALM OF CHAOS165361713					
SHIPPED BY COLOR	S.	M.	L.	XL.	XXL.



OBEY REALM OF CHAOS163081713					
SHIPPED BY COLOR	S.	M.	L.	XL.	XXL.



BLACK

OBEY BROKEN EAGLE165361714					
SHIPPED BY COLOR	S.	M.	L.	XL.	XXL.



OBEY BROKEN EAGLE163081714					
SHIPPED BY COLOR	S.	M.	L.	XL.	XXL.

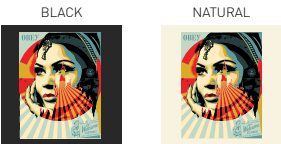


WHITE

OBEY TARGET EXCEPTIONS165361733					
SHIPPED BY COLOR	S.	M.	L.	XL.	XXL.



OBEY TARGET EXCEPTIONS163081733					
SHIPPED BY COLOR	S.	M.	L.	XL.	XXL.



PREMIUM / BASIC TEES

PREMIUM TEE - Regular fit short sleeve tee with set in rib neck trim. Made in an extra soft lightweight cotton. SOLID: 100% Cotton; HEATHER GREY: 90% Cotton / 10% Polyester
BASIC TEE - Regular fit crew neck tee with solid rib neck trims. Made in a heavyweight cotton. SOLID: 100% Cotton; HEATHER GREY: 90% Cotton / 10% Polyester



BLACK

OBEY TARGET IGNORANCE

165361734

SHIPPED BY COLOR	S.	M.	L.	XL.	XXL.
------------------	----	----	----	-----	------

TAPENADE



WHITE



OBEY TARGET IGNORANCE

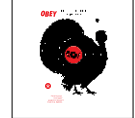
163081734

SHIPPED BY COLOR	S.	M.	L.	XL.	XXL.
------------------	----	----	----	-----	------

TAPENADE



WHITE



POWDER BLUE

OBEY PRINTING PRESS STENCIL

165361711

SHIPPED BY COLOR	S.	M.	L.	XL.	XXL.
------------------	----	----	----	-----	------

BLACK



WHITE



OBEY PRINTING PRESS STENCIL

163081711

SHIPPED BY COLOR	S.	M.	L.	XL.	XXL.
------------------	----	----	----	-----	------

BLACK



WHITE



ROYAL BLUE

OBEY VAN

165361716

SHIPPED BY COLOR	S.	M.	L.	XL.	XXL.
------------------	----	----	----	-----	------

BLACK



HTR. GREY



OBEY VAN

163081716

SHIPPED BY COLOR	S.	M.	L.	XL.	XXL.
------------------	----	----	----	-----	------

BLACK



HTR. GREY



PREMIUM / BASIC TEES

PREMIUM TEE - Regular fit short sleeve tee with set in rib neck trim. Made in an extra soft lightweight cotton. SOLID: 100% Cotton; HEATHER GREY: 90% Cotton / 10% Polyester
BASIC TEE - Regular fit crew neck tee with solid rib neck trims. Made in a heavyweight cotton. SOLID: 100% Cotton; HEATHER GREY: 90% Cotton / 10% Polyester



WHITE

OBEY WASTED YOUTH165361735					
SHIPPED BY COLOR	S.	M.	L.	XL.	XXL.



OBEY WASTED YOUTH163081735					
SHIPPED BY COLOR	S.	M.	L.	XL.	XXL.



NATURAL

OBEY EAGLE SHIELD165361732					
SHIPPED BY COLOR	S.	M.	L.	XL.	XXL.



OBEY EAGLE SHIELD163081732					
SHIPPED BY COLOR	S.	M.	L.	XL.	XXL.



TEAL

OBEY JUMBLE LO-FI165361489					
SHIPPED BY COLOR	S.	M.	L.	XL.	XXL.



OBEY JUMBLE LO-FI163081489					
SHIPPED BY COLOR	S.	M.	L.	XL.	XXL.



PREMIUM / BASIC TEES

PREMIUM TEE - Regular fit short sleeve tee with set in rib neck trim. Made in an extra soft lightweight cotton. SOLID: 100% Cotton; HEATHER GREY: 90% Cotton / 10% Polyester
BASIC TEE - Regular fit crew neck tee with solid rib neck trims. Made in a heavyweight cotton. SOLID: 100% Cotton; HEATHER GREY: 90% Cotton / 10% Polyester



NOVEL OBEY					165361578
SHIPPED BY COLOR	S.	M.	L.	XL.	XXL.



NOVEL OBEY					163081578
SHIPPED BY COLOR	S.	M.	L.	XL.	XXL.



CELADON



GOLD

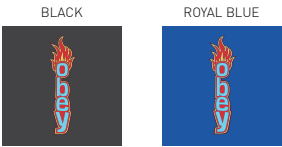
OBEY TYPEWRITTER					165361657
SHIPPED BY COLOR	S.	M.	L.	XL.	XXL.



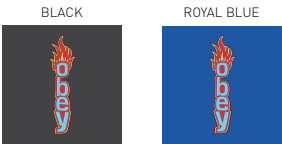
OBEY TYPEWRITTER					163081657
SHIPPED BY COLOR	S.	M.	L.	XL.	XXL.



OBEY FLAME					165361715
SHIPPED BY COLOR	S.	M.	L.	XL.	XXL.



OBEY FLAME					163081715
SHIPPED BY COLOR	S.	M.	L.	XL.	XXL.



TAPENADE

PREMIUM / BASIC TEES

PREMIUM TEE - Regular fit short sleeve tee with set in rib neck trim. Made in an extra soft lightweight cotton. SOLID: 100% Cotton; HEATHER GREY: 90% Cotton / 10% Polyester
 BASIC TEE - Regular fit crew neck tee with solid rib neck trims. Made in a heavyweight cotton. SOLID: 100% Cotton; HEATHER GREY: 90% Cotton / 10% Polyester



BLACK

THE WORLD IS YOURS						165361736
SHIPPED BY COLOR	S.	M.	L.	XL.	XXL.	



THE WORLD IS YOURS						163081736
SHIPPED BY COLOR	S.	M.	L.	XL.	XXL.	



WHITE

OBEY FEAR DIV.						165361737
SHIPPED BY COLOR	S.	M.	L.	XL.	XXL.	

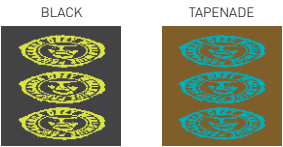


OBEY FEAR DIV.						163081737
SHIPPED BY COLOR	S.	M.	L.	XL.	XXL.	

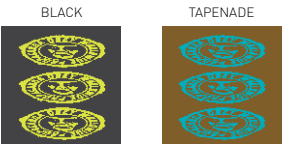


RED

NINETY-ONE						165361745
SHIPPED BY COLOR	S.	M.	L.	XL.	XXL.	



NINETY-ONE						163081745
SHIPPED BY COLOR	S.	M.	L.	XL.	XXL.	



PREMIUM / BASIC TEES

PREMIUM TEE - Regular fit short sleeve tee with set in rib neck trim. Made in an extra soft lightweight cotton. SOLID: 100% Cotton; HEATHER GREY: 90% Cotton / 10% Polyester
 BASIC TEE - Regular fit crew neck tee with solid rib neck trims. Made in a heavyweight cotton. SOLID: 100% Cotton; HEATHER GREY: 90% Cotton / 10% Polyester



PURPLE



WHITE

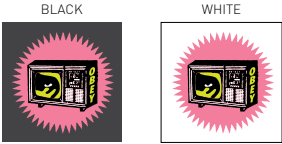


CELADON

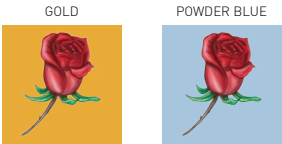
OBEY BROADCAST					165361755
SHIPPED BY COLOR	S.	M.	L.	XL.	XXL.



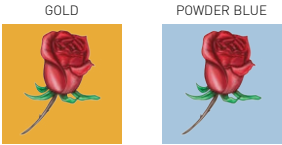
OBEY BROADCAST					163081755
SHIPPED BY COLOR	S.	M.	L.	XL.	XXL.



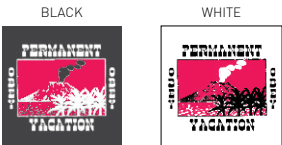
OBEY AIRBRUSHED ROSE					165361738
SHIPPED BY COLOR	S.	M.	L.	XL.	XXL.



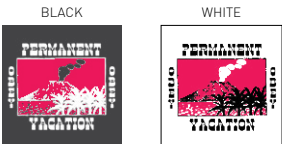
OBEY AIRBRUSHED ROSE					163081738
SHIPPED BY COLOR	S.	M.	L.	XL.	XXL.



PERMANENT VACATION 2					165361757
SHIPPED BY COLOR	S.	M.	L.	XL.	XXL.



PERMANENT VACATION 2					163081757
SHIPPED BY COLOR	S.	M.	L.	XL.	XXL.



PREMIUM / BASIC TEES

PREMIUM TEE - Regular fit short sleeve tee with set in rib neck trim. Made in an extra soft lightweight cotton. SOLID: 100% Cotton; HEATHER GREY: 90% Cotton / 10% Polyester
BASIC TEE - Regular fit crew neck tee with solid rib neck trims. Made in a heavyweight cotton. SOLID: 100% Cotton; HEATHER GREY: 90% Cotton / 10% Polyester



BLACK

OBEY MASSIVE SOUNDS

165361740

SHIPPED BY COLOR	S.	M.	L.	XL.	XXL.
------------------	----	----	----	-----	------

GOLD



WHITE



OBEY MASSIVE SOUNDS

163081740

SHIPPED BY COLOR	S.	M.	L.	XL.	XXL.
------------------	----	----	----	-----	------

GOLD



WHITE



ROYAL BLUE

ANXIETY RIDDIMS

165361718

SHIPPED BY COLOR	S.	M.	L.	XL.	XXL.
------------------	----	----	----	-----	------

BLACK



WHITE



ANXIETY RIDDIMS

163081718

SHIPPED BY COLOR	S.	M.	L.	XL.	XXL.
------------------	----	----	----	-----	------

BLACK



WHITE



BLACK

OBEY RECORDS

165361788

SHIPPED BY COLOR	S.	M.	L.	XL.	XXL.
------------------	----	----	----	-----	------

POWDER BLUE



WHITE



OBEY RECORDS

163081788

SHIPPED BY COLOR	S.	M.	L.	XL.	XXL.
------------------	----	----	----	-----	------

POWDER BLUE



WHITE



PREMIUM / BASIC TEES

PREMIUM TEE - Regular fit short sleeve tee with set in rib neck trim. Made in an extra soft lightweight cotton. SOLID: 100% Cotton; HEATHER GREY: 90% Cotton / 10% Polyester
BASIC TEE - Regular fit crew neck tee with solid rib neck trims. Made in a heavyweight cotton. SOLID: 100% Cotton; HEATHER GREY: 90% Cotton / 10% Polyester



GOLD

CUTS & SCRATCHES

165361719

SHIPPED BY COLOR	S.	M.	L.	XL.	XXL.
------------------	----	----	----	-----	------

BLACK



WHITE



CUTS & SCRATCHES

163081719

SHIPPED BY COLOR	S.	M.	L.	XL.	XXL.
------------------	----	----	----	-----	------

BLACK



WHITE



BLACK

OBEY NIGHTLIFE SPECIALISTS

165361723

SHIPPED BY COLOR	S.	M.	L.	XL.	XXL.
------------------	----	----	----	-----	------

POWDER BLUE



WHITE



OBEY NIGHTLIFE SPECIALISTS

163081723

SHIPPED BY COLOR	S.	M.	L.	XL.	XXL.
------------------	----	----	----	-----	------

POWDER BLUE



WHITE



WHITE

OBEY ANTI-VIOLENCE

165361721

SHIPPED BY COLOR	S.	M.	L.	XL.	XXL.
------------------	----	----	----	-----	------

BLACK



TAPENADE



OBEY ANTI-VIOLENCE

163081721

SHIPPED BY COLOR	S.	M.	L.	XL.	XXL.
------------------	----	----	----	-----	------

BLACK



TAPENADE



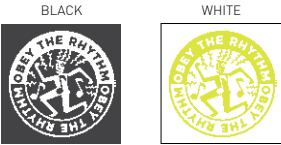
PREMIUM / BASIC TEES

PREMIUM TEE - Regular fit short sleeve tee with set in rib neck trim. Made in an extra soft lightweight cotton. SOLID: 100% Cotton; HEATHER GREY: 90% Cotton / 10% Polyester
BASIC TEE - Regular fit crew neck tee with solid rib neck trims. Made in a heavyweight cotton. SOLID: 100% Cotton; HEATHER GREY: 90% Cotton / 10% Polyester



TEAL

OBEY THE RHYTHM165361739					
SHIPPED BY COLOR	S.	M.	L.	XL.	XXL.

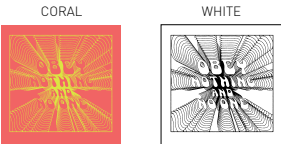


OBEY THE RHYTHM163081739					
SHIPPED BY COLOR	S.	M.	L.	XL.	XXL.

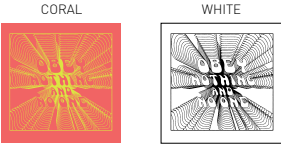


BLACK

OBEY NOTHING165361728					
SHIPPED BY COLOR	S.	M.	L.	XL.	XXL.



OBEY NOTHING163081728					
SHIPPED BY COLOR	S.	M.	L.	XL.	XXL.



WHITE

HOUSE OF OBEY165361726					
SHIPPED BY COLOR	S.	M.	L.	XL.	XXL.



HOUSE OF OBEY163081726					
SHIPPED BY COLOR	S.	M.	L.	XL.	XXL.



PREMIUM / BASIC TEES

PREMIUM TEE - Regular fit short sleeve tee with set in rib neck trim. Made in an extra soft lightweight cotton. SOLID: 100% Cotton; HEATHER GREY: 90% Cotton / 10% Polyester
BASIC TEE - Regular fit crew neck tee with solid rib neck trims. Made in a heavyweight cotton. SOLID: 100% Cotton; HEATHER GREY: 90% Cotton / 10% Polyester



LAVENDER

DREAMS

165361741

SHIPPED BY COLOR	S.	M.	L.	XL.	XXL.
------------------	----	----	----	-----	------

BLACK



WHITE



DREAMS

163081741

SHIPPED BY COLOR	S.	M.	L.	XL.	XXL.
------------------	----	----	----	-----	------

BLACK



WHITE



TEAL

SUBLIMINAL PROPAGANDA

165361725

SHIPPED BY COLOR	S.	M.	L.	XL.	XXL.
------------------	----	----	----	-----	------

BLACK



WHITE



SUBLIMINAL PROPAGANDA

163081725

SHIPPED BY COLOR	S.	M.	L.	XL.	XXL.
------------------	----	----	----	-----	------

BLACK



WHITE



ROYAL BLUE

WE OWN THE NIGHT

165361731

SHIPPED BY COLOR	S.	M.	L.	XL.	XXL.
------------------	----	----	----	-----	------

BLACK



WHITE



WE OWN THE NIGHT

163081731

SHIPPED BY COLOR	S.	M.	L.	XL.	XXL.
------------------	----	----	----	-----	------

BLACK



WHITE



PREMIUM / BASIC TEES

PREMIUM TEE - Regular fit short sleeve tee with set in rib neck trim. Made in an extra soft lightweight cotton. SOLID: 100% Cotton; HEATHER GREY: 90% Cotton / 10% Polyester
 BASIC TEE - Regular fit crew neck tee with solid rib neck trims. Made in a heavyweight cotton. SOLID: 100% Cotton; HEATHER GREY: 90% Cotton / 10% Polyester



GOLD



POWDER BLUE

WELCOME TO HELL						165361727
SHIPPED BY COLOR	S.	M.	L.	XL.	XXL.	

POWDER BLUE



WHITE

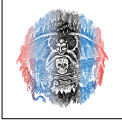


WELCOME TO HELL						163081727
SHIPPED BY COLOR	S.	M.	L.	XL.	XXL.	

POWDER BLUE



WHITE



BOUND TO FAIL						165361730
SHIPPED BY COLOR	S.	M.	L.	XL.	XXL.	

BLACK



WHITE



BOUND TO FAIL						163081730
SHIPPED BY COLOR	S.	M.	L.	XL.	XXL.	

BLACK



WHITE



BASIC LONG SLEEVE TEES

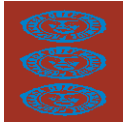
Regular fit crew neck long sleeve tee with set in rib trims. Made in a heavyweight cotton
SOLIDS: 100% Cotton; HEATHER GREY: 90% Cotton / 10% Polyester

NINETY-ONE

164901745

SHIPPED BY COLOR	S.	M.	L.	XL.	XXL.
------------------	----	----	----	-----	------

RED



WHITE



BLACK

OBEY CREEPER FLAME

164901758

SHIPPED BY COLOR	S.	M.	L.	XL.	XXL.
------------------	----	----	----	-----	------

BLACK



WHITE



TAPENADE

THE WORLD IS YOURS

164901736

SHIPPED BY COLOR	S.	M.	L.	XL.	XXL.
------------------	----	----	----	-----	------

BLACK



WHITE



LAVENDER

ANXIETY RIDDIMS

164901718

SHIPPED BY COLOR	S.	M.	L.	XL.	XXL.
------------------	----	----	----	-----	------

BLACK



ROYAL BLUE



WHITE

SUBLIMINAL PROPAGANDA

164901725

SHIPPED BY COLOR	S.	M.	L.	XL.	XXL.
------------------	----	----	----	-----	------

TEAL



WHITE



BLACK

BOUND TO FAIL

164901730

SHIPPED BY COLOR	S.	M.	L.	XL.	XXL.
------------------	----	----	----	-----	------

BLACK



WHITE



POWDER BLUE



**CUSTOM HEAVYWEIGHT GARMENT DYED
BOX TEES, JERSEYS, AND SHORTS**



166911715 OBEY FLAME

HEAVYWEIGHT CLASSIC BOX TEE

Heavyweight fabric custom box fit. Garment dye with softener wash. Made in the U.S.A.
100% Cotton



OBEY JUMBLE LO-FI

166911489

SHIPPED BY COLOR	S.	M.	L.	XL.	XXL.
------------------	----	----	----	-----	------

OFF BLACK



SPECTRA YELLOW



WHITE



FIRE RED

NOVEL OBEY

166911578

SHIPPED BY COLOR	S.	M.	L.	XL.	XXL.
------------------	----	----	----	-----	------

OFF BLACK



ROYAL BLUE



SPECTRA YELLOW



APRICOT

OBEY TYPEWRITTER

166911657

SHIPPED BY COLOR	S.	M.	L.	XL.	XXL.
------------------	----	----	----	-----	------

OFF BLACK



ROYAL BLUE



WHITE



FIRE RED

OBEY FLAME

166911715

SHIPPED BY COLOR	S.	M.	L.	XL.	XXL.
------------------	----	----	----	-----	------

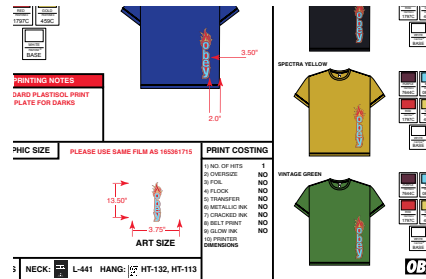
OFF BLACK



SPECTRA YELLOW



VINTAGE GREEN



ROYAL BLUE

OBEY VAN

166911716

SHIPPED BY COLOR	S.	M.	L.	XL.	XXL.
------------------	----	----	----	-----	------

ROYAL BLUE



FIRE RED



VINTAGE GREEN



OFF BLACK

OBEY AIRBRUSHED ROSE

166911738

SHIPPED BY COLOR	S.	M.	L.	XL.	XXL.
------------------	----	----	----	-----	------

AQUA MARINE



CREAM



WHITE



SPECTRA YELLOW

HEAVYWEIGHT CLASSIC BOX TEE

Heavyweight fabric custom box fit. Garment dye with softener wash. Made in the U.S.A.
100% Cotton



OBEY THE RHYTHM

166911739

SHIPPED BY COLOR	S.	M.	L.	XL.	XXL.
------------------	----	----	----	-----	------

FIRE RED



AQUA MARINE



WHITE



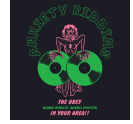
OFF BLACK

ANXIETY RIDDIMS

166911718

SHIPPED BY COLOR	S.	M.	L.	XL.	XXL.
------------------	----	----	----	-----	------

OFF BLACK



ROYAL BLUE



SPECTRA YELLOW



WHITE

HEAVYWEIGHT HOCKEY JERSEY

Custom dropped shoulder box fit hockey jersey with "V" neck trim. Garment dye with softener wash. Made in the U.S.A.
100% Cotton.



OBEY NEW WORLD 2

136881696

SHIPPED BY COLOR	S.	M.	L.	XL.	XXL.
------------------	----	----	----	-----	------

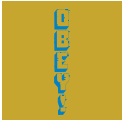
OFF BLACK



APRICOT



SPECTRA YELLOW



AQUA MARINE

NINETY-ONE

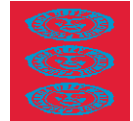
136881745

SHIPPED BY COLOR	S.	M.	L.	XL.	XXL.
------------------	----	----	----	-----	------

OFF BLACK



FIRE RED



ROYAL BLUE



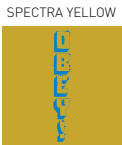
WHITE

HEAVYWEIGHT SPORTS SHORT

Heavyweight fabric custom relaxed fit elastic waist short with slash front pockets and braided draw-cord at interior waistband.
Garment dye with softener wash. Made in the U.S.A. 100% Cotton

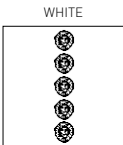


OBEY NEW WORLD 2					176921686
SHIPPED BY COLOR	S.	M.	L.	XL.	XXL.



APRICOT

NINETY-ONE					176921745
SHIPPED BY COLOR	S.	M.	L.	XL.	XXL.



OFF BLACK

**CUSTOM HEAVYWEIGHT PIGMENT DYED
TEES, AND LONG SLEEVES TEES**



166721737 OBEY FEAR DIV.

CUSTOM HEAVYWEIGHT PIGMENT TEE

Regular fit short sleeve pigment dyed crew neck tee with set in rib trims. Features a heavyweight jersey fabrication.
100% Cotton.

OBEE EYES OUTLINE

166721754

SHIPPED BY COLOR	S.	M.	L.	XL.	XXL.
------------------	----	----	----	-----	------

DUSTY BLACK



DUSTY MAGENTA



DUSTY LEMON



DUSTY TEAL

NINETY-ONE

166721745

SHIPPED BY COLOR	S.	M.	L.	XL.	XXL.
------------------	----	----	----	-----	------

DUSTY BLACK



DUSTY BLUE



DUSTY MAGENTA

THE WORLD IS YOURS

166721736

SHIPPED BY COLOR	S.	M.	L.	XL.	XXL.
------------------	----	----	----	-----	------

DUSTY BLACK



DUSTY LEMON



DUSTY BLUE

OBEE FEAR DIV.

166721737

SHIPPED BY COLOR	S.	M.	L.	XL.	XXL.
------------------	----	----	----	-----	------

DUSTY BLACK



DUSTY LAVENDER



DUSTY MINT

OBEE NOTHING

166721728

SHIPPED BY COLOR	S.	M.	L.	XL.	XXL.
------------------	----	----	----	-----	------

DUSTY BLACK



DUSTY MINT



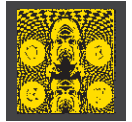
DUSTY CORAL

DREAMS

166721741

SHIPPED BY COLOR	S.	M.	L.	XL.	XXL.
------------------	----	----	----	-----	------

DUSTY BLACK



DUSTY MAGENTA



DUSTY TEAL

CUSTOM HEAVYWEIGHT PIGMENT TEE

Regular fit short sleeve pigment dyed crew neck tee with set in rib trims. Features a heavyweight jersey fabrication.
100% Cotton.

SUBLIMINAL PROPAGANDA

166721725

SHIPPED BY COLOR	S.	M.	L.	XL.	XXL.
------------------	----	----	----	-----	------

DUSTY TEAL



DUSTY MAGENTA



DUSTY BLACK

HOUSE OF OBEY

166721726

SHIPPED BY COLOR	S.	M.	L.	XL.	XXL.
------------------	----	----	----	-----	------

DUSTY CORAL



DUSTY MINT



DUSTY LAVENDER

CUSTOM HEAVYWEIGHT PIGMENT LONG SLEEVE TEE

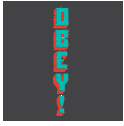
Regular fit long sleeve crew neck pigment dyed tee with set in rib trims. Features a heavyweight jersey fabrication.
100% Cotton.

OBEY NEW WORLD 2

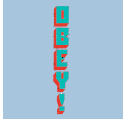
166731696

SHIPPED BY COLOR	S.	M.	L.	XL.	XXL.
------------------	----	----	----	-----	------

DUSTY BLACK



DUSTY BLUE



DUSTY CORAL



DUSTY LAVENDER

OBEY THE RHYTHM

166731739

SHIPPED BY COLOR	S.	M.	L.	XL.	XXL.
------------------	----	----	----	-----	------

DUSTY BLACK



DUSTY CORAL



DUSTY TEAL

PERMANENT VACATION 2

166731757

SHIPPED BY COLOR	S.	M.	L.	XL.	XXL.
------------------	----	----	----	-----	------

DUSTY BLACK



DUSTY TEAL



DUSTY MINT



DUSTY MAGENTA

OBEY AIRBRUSHED ROSE

166731738

SHIPPED BY COLOR	S.	M.	L.	XL.	XXL.
------------------	----	----	----	-----	------

DUSTY LAVENDER



DUSTY BLUE



DUSTY LEMON

**CUSTOM HEAVYWEIGHT BLEACH DYED
TEES, AND LONG SLEEVE TEES**



166741672 DREAMS

BLEACH TIE DYE TEE

Regular fit short sleeve crew neck tee tie dyed with set in rib trims. Features a heavyweight jersey fabrication.
100% Cotton

NOVEL OBEY

166741578

SHIPPED BY COLOR	S.	M.	L.	XL.	XXL.
------------------	----	----	----	-----	------

TEAL



MAGENTA



YELLOW



BLACK

OBEY JUMBLE LO-FI

166741489

SHIPPED BY COLOR	S.	M.	L.	XL.	XXL.
------------------	----	----	----	-----	------

BLACK



TEAL



SAFETY GREEN



ORANGE

HOUSE OF OBEY

166741726

SHIPPED BY COLOR	S.	M.	L.	XL.	XXL.
------------------	----	----	----	-----	------

MAGENTA



YELLOW



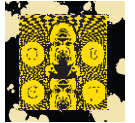
TEAL

DREAMS

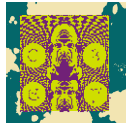
166741741

SHIPPED BY COLOR	S.	M.	L.	XL.	XXL.
------------------	----	----	----	-----	------

BLACK



TEAL



MAGENTA

BLEACH TIE DYE LONG SLEEVE TEE

Regular fit long sleeve crew neck bleach tie dyed tee with set in rib trims. Features a heavyweight jersey fabrication.
80% Cotton / 20% Polyester

NOVEL OBEY

166751578

SHIPPED BY COLOR	S.	M.	L.	XL.	XXL.
------------------	----	----	----	-----	------

BLACK



MAGENTA



YELLOW



TEAL

OBEY JUMBLE LO-FI

166751489

SHIPPED BY COLOR	S.	M.	L.	XL.	XXL.
------------------	----	----	----	-----	------

TEAL



ORANGE



SAFETY GREEN



BLACK

THE CREEPER

166751247

SHIPPED BY COLOR	S.	M.	L.	XL.	XXL.
------------------	----	----	----	-----	------

BLACK



MAGENTA



SAFETY GREEN

OBEY ANTI-VIOLENCE

166751721

SHIPPED BY COLOR	S.	M.	L.	XL.	XXL.
------------------	----	----	----	-----	------

BLACK



TEAL



YELLOW



CUSTOM TEES



166651755 OBEY BROADCAST

SUPERIOR TEE

Regular fit crew neck tee with set in rib trim. Features a super soft fine knit jersey fabrication.
100% Cotton

OBEY SCRIPT

166141746

SHIPPED BY COLOR	S.	M.	L.	XL.	XXL.
------------------	----	----	----	-----	------

INSIGNIA BLUE



PAPRIKA



STEEL GREEN

PATCH IT UP

166141743

SHIPPED BY COLOR	S.	M.	L.	XL.	XXL.
------------------	----	----	----	-----	------

LIMO BLACK



STEEL GREEN



PAPRIKA

CUMBERLAND

166141744

SHIPPED BY COLOR	S.	M.	L.	XL.	XXL.
------------------	----	----	----	-----	------

INSIGNIA BLUE



YELLOW



WHITE

OBEY RECORDS & CASSETTES

166141748

SHIPPED BY COLOR	S.	M.	L.	XL.	XXL.
------------------	----	----	----	-----	------

LIMO BLACK



WHITE



YELLOW

OBEY TILL DEATH

166141752

SHIPPED BY COLOR	S.	M.	L.	XL.	XXL.
------------------	----	----	----	-----	------

PAPRIKA



WHITE



LIMO BLACK

OBEY ROSE SOLDIER STENCIL

166141712

SHIPPED BY COLOR	S.	M.	L.	XL.	XXL.
------------------	----	----	----	-----	------

INSIGNIA BLUE



WHITE



LIMO BLACK

SUPERIOR TEE

Regular fit crew neck tee with set in rib trim. Features a super soft fine knit jersey fabrication.
100% Cotton

OBEY PRECISION CONTROL					166141747
SHIPPED BY COLOR	S.	M.	L.	XL.	XXL.



INSIGNIA BLUE

PROBLEMS IN PARADISE					166141749
SHIPPED BY COLOR	S.	M.	L.	XL.	XXL.



WHITE

SUPERIOR PIGMENT TEE

Regular fit pigment dyed crew neck tee with set in rib neck trim. Features a super soft fine knit jersey fabrication.
100% Cotton

OBHEY BROKEN EAGLE166521714					
SHIPPED BY COLOR	S.	M.	L.	XL.	XXL.

DUSTY LIGHT ARMY



DUSTY FOG



DUSTY BLACK

OBHEY PRINTING PRESS STENCIL166521711					
SHIPPED BY COLOR	S.	M.	L.	XL.	XXL.

DUSTY BLACK



DUSTY YELLOW



DUSTY FOG

OBHEY EAGLE SHIELD166521732					
SHIPPED BY COLOR	S.	M.	L.	XL.	XXL.

DUSTY BLACK



DUSTY FOG



DUSTY YELLOW

OBHEY WASTED YOUTH166521735					
SHIPPED BY COLOR	S.	M.	L.	XL.	XXL.

DUSTY BLACK



DUSTY FOG



DUSTY PAPRIKA

PREMIUM CONTRAST TEE

Regular fit short sleeve tee with contrast set in rib trim. Made in an extra soft lightweight cotton.
SOLID: 100% Cotton; HEATHER GREY: 90% Cotton / 10% Polyester

OBEE VAN

166651716

SHIPPED BY COLOR	S.	M.	L.	XL.	XXL.
------------------	----	----	----	-----	------

TAPENADE/BLACK



WHITE/BLACK



POWDER BLUE/BLACK

OBEE BROADCAST

166651755

SHIPPED BY COLOR	S.	M.	L.	XL.	XXL.
------------------	----	----	----	-----	------

POWDER BLUE/
BLACK



WHITE/BLACK



WHITE/RED

OBEE FLAME INTERNATIONAL

166651753

SHIPPED BY COLOR	S.	M.	L.	XL.	XXL.
------------------	----	----	----	-----	------

LAVENDER/BLACK



POWDER BLUE/
BLACK



WHITE/BLACK

OBEE AIRBRUSHED ROSE

166651656

SHIPPED BY COLOR	S.	M.	L.	XL.	XXL.
------------------	----	----	----	-----	------

POWDER BLUE/
BLACK



WHITE/BLACK



LAVENDER/BLACK

PREMIUM POCKET TEE

Regular fit short sleeve pocket tee with set in rib neck trim and chest pocket. Made in extra soft lightweight cotton.
100% Cotton

OBEE JUMBLED

165371216

SHIPPED BY COLOR	S.	M.	L.	XL.	XXL.
------------------	----	----	----	-----	------

BLACK



POWDER BLUE



WHITE



LAVENDER

THE CREEPER

165371586

SHIPPED BY COLOR	S.	M.	L.	XL.	XXL.
------------------	----	----	----	-----	------

BLACK



TEAL



CORAL

OBEE TYPEWRITER 2

165371756

SHIPPED BY COLOR	S.	M.	L.	XL.	XXL.
------------------	----	----	----	-----	------

BLACK



ROYAL BLUE



WHITE

OBEE FLAME INTERNATIONAL

165371753

SHIPPED BY COLOR	S.	M.	L.	XL.	XXL.
------------------	----	----	----	-----	------

ROYAL BLUE



WHITE



BLACK

PRINTABLE FIT GUIDE

PREMIUM TEE

- Regular fit
- Extra soft lightweight fabrication
- Solid Colorway: 100% Cotton
- Heather Grey Colorway: 90% Cotton / 10% Polyester



BASIC TEE

- Regular fit
- Heavyweight fabrication
- Solid Colorway: 100% Cotton
- Heather Grey Colorway: 90% Cotton / 10% Polyester



BASIC LONG SLEEVE TEE

- Regular fit
- Heavyweight fabrication
- Solid Colorway: 100% Cotton
- Heather Grey Colorway: 90% Cotton / 10% Polyester



PRINTABLE FIT GUIDE

HEAVYWEIGHT CLASSIC BOX TEE

- Custom box fit
- Garment dye with softener wash
- Heavyweight fabrication
- Made in the U.S.A.
- 100% Cotton.



HEAVYWEIGHT HOCKEY JERSEY

- Custom dropped shoulder box fit
- Garment dye with softener wash
- Heavyweight fabrication
- Made in the U.S.A.
- 100% Cotton.



HEAVYWEIGHT SPORTS SHORT

- Custom relaxed fit
- Garment dye with softener wash
- Heavyweight fabrication
- Made in the U.S.A.
- 100% Cotton.



PRINTABLE FIT GUIDE

CUSTOM HEAVYWEIGHT PIGMENT TEE

- Regular fit
- Pigment dyed
- Heavyweight jersey.
- 100% Cotton.



SUPERIOR TEE

- Regular fit
- Super soft fine knit jersey fabrication
- 100% Cotton



SUPERIOR PIGMENT TEE

- Regular fit
- Pigment dyed
- Super soft fine knit jersey fabrication
- 100% Cotton



PRINTABLE FIT GUIDE

PREMIUM CONTRAST TEE

- Regular fit
- Contrast set in rib
- Soft lightweight fabrication
- Solids: 100% Cotton; Heather grey: 90% Cotton / 10% Polyester



PREMIUM POCKET TEE

- Regular fit
- Feature chest pocket
- Soft lightweight fabrication
- 100% Cotton



OBEY

17462 VON KARMAN AVE.
IRVINE, CA 92614 U.S.A.
PHONE: 949.596.8400 / FAX: 949.596.8437
WWW.OBEYCLOTHING.COM
WWW.OBEYGIANT.COM