



OBEY

SPRING 2024 | MENS COLLECTION



THE OBEY CAMPAIGN CAN BE EXPLAINED AS AN EXPERIMENT IN PHENOMENOLOGY. THE FIRST AIM OF PHENOMENOLOGY IS TO REAWAKEN A SENSE OF WONDER ABOUT ONE'S ENVIRONMENT. THE OBEY CAMPAIGN ATTEMPTS TO STIMULATE CURIOSITY AND BRING PEOPLE TO QUESTION BOTH THE CAMPAIGN AND THEIR RELATIONSHIP WITH THEIR SURROUNDINGS. BECAUSE PEOPLE ARE NOT USED TO SEEING ADVERTISEMENTS OR PROPAGANDA FOR WHICH THE MOTIVE IS NOT OBVIOUS, FREQUENT AND NOVEL ENCOUNTERS WITH OBEY PROPAGANDA PROVOKE THOUGHT AND POSSIBLE FRUSTRATION, NEVERTHELESS REVITALIZING THE VIEWER'S PERCEPTION AND ATTENTION TO DETAIL. TO CATALYZE A THOUGHTFUL DIALOGUE DECONSTRUCTING THE PROCESS OF IMAGE ABSORPTION IS THE ULTIMATE GOAL. ALL IN THE NAME OF FUN AND OBSERVATION.

THE MEDIUM IS THE MESSAGE.

HISTORY



1989

OG STICKER – WHAT STARTED AS A JOKE, BECAME AN OBSESSION. FIRST SHOWING UP IN PROVIDENCE, RHODE ISLAND, THE IMAGE QUICKLY SPREAD DOWN THE EAST COAST AND BEYOND. TO DATE, OVER TEN MILLION STICKERS HAVE BEEN PROLIFERATED WORLDWIDE.

1990

OBEY CAMPAIGN - INSPIRED BY JOHN CARPENTER'S CULT CLASSIC FILM THEY LIVE, THE SLOGAN OBEY WAS ADOPTED TO ACCOMPANY THE IMAGE. "IT WAS TOTALLY CAMPY, BUT I REALLY LIKED THE SUBVERSIVE ELEMENTS OF IT, HOW PEOPLE ARE SLAVES TO CONSUMERISM BECAUSE EVERYTHING IS GLOSSY ON THE SURFACE."

1995

OBEY ICON FACE - SHEPARD STYLIZES THE ICON FACE EVOLVING AWAY FROM THE OG STICKER. INFLUENCED BY GEORGE ORWELL'S "BIG BROTHER" IMAGE, THE STREAMLINED GRAPHIC APPROACH OF THE RUSSIAN CONSTRUCTIVIST POSTER, AND BARBARA KRUGER'S USE OF FONT AND COLOR, A NEW PHASE OF THE STORY EMERGES.

1995

SUBLIMINAL PROJECTS – A MULTI-FUNCTIONAL PROJECT SPACE AND GALLERY ESTABLISHED BY SHEPARD, SKATEBOARDER BLAIZE BLOUIN, AND DESIGNER AND DJ ALFRED HAWKINS AS A WAY TO INTRODUCE SKATEBOARD CULTURE AND DESIGN TO THE ART WORLD. ESTABLISHED ON THE EAST COAST BUT EVENTUALLY SETTLING IN LA, SUBLIMINAL PROJECTS REMAINS A SPACE THAT CHAMPIONS EMERGING ARTISTS.

1996

EAST TO WEST – SHEPARD FAIREY CLOSES SCREEN PRINTING SHOP IN PROVIDENCE, RHODE ISLAND, AND MOVES TO SAN DIEGO, CALIFORNIA TO PURSUE GRAPHIC DESIGN AND ART.

1998

BURGEONING GALLERY CAREER - SHEPARD'S WORK BEGINS TO RECEIVE RECOGNITION ON LARGER SCALE. STREET ART BEGINS TO BUILD RELEVANCE AMONGST FANS AND COLLECTORS, OPENING UP AVENUES IN FINE ART GALLERIES AND OTHER OUTLETS.

2000

OBEY CLOTHING - MAKING OBEY T-SHIRTS THROUGHOUT HIS CAREER, SHEPARD PARTNERS TO EXPAND THE REACH OF HIS IMAGES ON CLOTHING. AS A POPULIST IN NATURE, THE IDEA TO SPREAD HIS MESSAGE FURTHER THROUGH A NEW MEDIUM IS LAUNCHED.

2003

STUDIO NUMBER ONE IS FOUNDED BY SHEPARD AND AMANDA FAIREY – DEEPLY EMBEDDED WITH FAIREY'S DNA, STUDIO NUMBER ONE DESIGN STUDIO CHALLENGES HOW PEOPLE THINK ABOUT THEIR SURROUNDINGS THROUGH BOLD MARKETING AND ADVERTISING

2004

SWINDLE MAGAZINE - PARTNERING WITH ROGER GASTMAN, THE MAGAZINE FEATURED POP CULTURE AND LIFESTYLE CONTENT AROUND MUSIC, FASHION, AND THE ARTS. COVERS INCLUDED THE LIKES OF HENRY ROLLINS, BANKSY, TWIST, AND MORE.

2006

SUPPLY & DEMAND: THE ART OF SHEPARD FAIREY IS PUBLISHED, A RETROSPECTIVE LOOK AT SHEPARD'S CAREER TO THAT POINT. IN ITS THIRD PRINTING, THE BOOK COVERS HIS WORK TO DATE IN ADDITION TO ESSAYS AND COMMENTARY FROM FAIREY'S CONTEMPORARIES AND THOSE AROUND IN THE EARLY YEARS.



2007

OBEY AWARENESS - OBEY CLOTHING LAUNCHES THE AWARENESS CAMPAIGN SUPPORTING NON-PROFITS THROUGH THE PRODUCTION OF T-SHIRTS AND DONATION OF FUNDS TO ORGANIZATIONS THAT FIT THE IDEALS AND MESSAGING OF THE BRAND.

2008

HOPE POSTER - MOTIVATED BY HIS OWN CIVIC RESPONSIBILITY, SHEPARD USES HIS SKILLS TO CREATE A POSTER ILLUSTRATION OF THEN-PRESIDENTIAL CANDIDATE BARACK OBAMA WITH THE WORD HOPE UNDERNEATH. THE IMAGE BECOMES THE PREDOMINATELY RECOGNIZED IMAGE OF THE CAMPAIGN, EVENTUALLY BEING INDUCTED INTO THE NATIONAL PORTRAIT GALLERY IN WASHINGTON.

2010

MAYDAY - THE FINAL GALLERY SHOW AT DEITCH PROJECTS IN LOWER MANHATTAN, MAYDAY WAS AN EXHIBITION OF PRIMARILY PORTRAITS OF REVOLUTIONARIES IN THE WAY OF ARTISTS, MUSICIANS, AND POLITICAL ACTIVISTS.

2010

EXIT THROUGH THE GIFTSHOP - SHEPARD IS HEAVILY FEATURED IN THE DOCUMENTARY BY HIS FRIEND, RENOWNED STREET ARTIST, BANKSY. THE FILM ANCHORS STREET ART IN THE CULTURE OF THE DAY.

2015

OBEY CLOTHING IDEALS - WANTING TO IMPROVE ITS OVERSIGHT IN SOURCING AND MANUFACTURING, OBEY CLOTHING STARTS WORKING WITH FAIR TRADE IN ADDITION TO RESOURCING MORE ORGANIC, RECYCLED AND SUSTAINABLE PRODUCT THROUGH MATERIALS AND TRANSPORT. AS AN ONGOING MISSION TO IMPROVE, IDEALS IS AN OPEN-ENDED PROJECT THAT EVOLVES AS NEW OPPORTUNITIES BECOME AVAILABLE. (2021 GOTS CERTIFICATION).

2017

WE THE PEOPLE, WOMEN'S MARCH - IN COLLABORATION WITH AMPLIFIER, SHEPARD CREATES ICONIC PROTEST ART WITH MESSAGES INCLUDING "DEFEND DIGNITY," "GREATER THAN FEAR," AND "PROTECT EACH OTHER" CELEBRATING AND LIFTING UP MARGINALIZED PEOPLE.

OBEY GIANT DOCUMENTARY - HULU RELEASES A DOCUMENTARY FILM, OBEY GIANT: THE ART AND DISSENT OF SHEPARD FAIREY ON THE LIFE AND CAREER OF SHEPARD, SPANNING THE NEARLY 30 YEARS OF HIS CAREER.

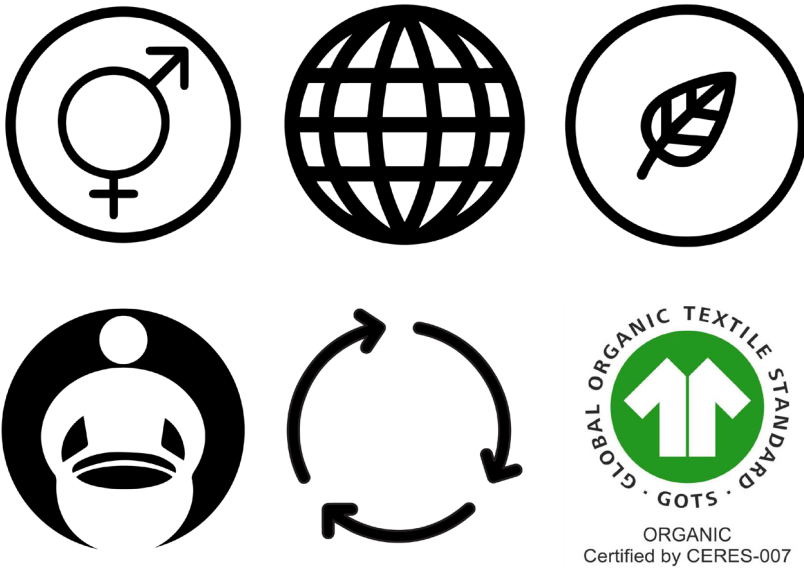
DAMAGED - IN CONJUNCTION WITH LIBRARY STREET COLLECTIVE, THE DAMAGED EXHIBITION LAUNCHES IN LA. THE SHOW FOCUSES PRIMARILY ON CRITICAL ISSUES IN SOCIETY. AS SHEPARD STATES, "DAMAGED IS AN HONEST DIAGNOSIS, BUT DIAGNOSIS IS THE FIRST STEP TO RECOGNIZING AND SOLVING PROBLEMS."

2019

FACING THE GIANT - 3 DECADES OF DISSENT CELEBRATES 30 YEARS OF OBEY. THE SHOW HIGHLIGHTS A NUMBER OF DISTINCT WORKS FROM EACH OF THE 3 DECADES OF SHEPARD'S OBEY ART CAMPAIGN REPURPOSED OR OFFERED IN A NEW FORMAT.

100TH MURAL - SHEPARD COMPLETES HIS 100TH MURAL IN PROVIDENCE, RHODE ISLAND. CREATIVITY, EQUALITY, JUSTICE IS COMPLETED WITH SUPPORT AND INSPIRATION FROM NON-PROFIT ARTIST SPACE AS220.

LEGEND



UNISEX

THIS ICON INDICATES THAT THIS GARMENT IS UNISEX.

SUSTAINABLE

THIS ICON INDICATES THAT THIS GARMENT IS CONSTRUCTED SUSTAINABLY. MORE THAN JUST SUSTAINABLE RAW MATERIALS, WE CONSIDER THE SOCIAL ENVIRONMENT, AND ECONOMIC IMPACT OF ITS PRODUCTION.

ORGANIC COTTON

THIS ICON INDICATES THAT THIS GARMENT IS CONSTRUCTED WITH ORGANIC COTTON. CERTIFIED ORGANIC COTTON FOLLOWING STRICT REGULATIONS WITHOUT THE USE OF GMO'S HARMFUL PESTICIDES, OR SYNTHETIC FERTILIZERS.

FAIR TRADE

FAIR TRADE USA'S FAIR TRADE CERTIFIED™ LABEL EMPOWERS YOU, THE CONSUMER, WITH THE KNOWLEDGE THAT YOUR PURCHASE HAS A POSITIVE IMPACT ON THE PEOPLE WHO SEW AND GROW THE PRODUCTS YOU LOVE.

FOR EVERY OBEY FAIR TRADE CERTIFIED™ PRODUCT SOLD, A PERCENTAGE IS PAID DIRECTLY TO A SPECIAL FUND FOR THE WORKERS THAT CREATE OUR GOODS. THEY DECIDE COLLECTIVELY HOW TO SPEND THESE FUNDS BASED ON THEIR COMMUNITIES GREATEST NEEDS: FROM SCHOLARSHIPS, SCHOOL BUSES, TO MEDICAL CARE, DISASTER AND RELIEF SERVICES.

RECYCLED MATERIAL

THIS ICON INDICATES THAT THIS GARMENT IS CONSTRUCTED WITH RECYCLED MATERIALS. PER T-SHIRT, 1.6 RECYCLED PLASTIC BOTTLES AND .10LBS OF RECYCLED COTTON ARE USED.

REDUCE, REUSE, RECYCLE!

GOTS CERTIFIED

THIS ICON INDICATES THAT THIS GARMENT IS GOTS CERTIFIED. THIS PRODUCT IS SUSTAINABLY SOURCED FROM SEED TO FINISHED PRODUCT, THROUGH ENVIRONMENTALLY AND SOCIALLY RESPONSIBLE MANUFACTURING, AND IS CERTIFIED BY GLOBAL ORGANIC TEXTILE STANDARD.



SHEPARD FAIREY, FOUNDER OF OBEY AND OBEY CLOTHING, WAS BORN IN CHARLESTON, SOUTH CAROLINA. HE RECEIVED HIS BACHELOR OF FINE ARTS IN ILLUSTRATION AT THE RHODE ISLAND SCHOOL OF DESIGN IN PROVIDENCE, RHODE ISLAND. IN 1989 HE CREATED THE "ANDRE THE GIANT HAS A POSSE" STICKER THAT TRANSFORMED INTO THE OBEY GIANT ART CAMPAIGN, WITH IMAGERY THAT HAS CHANGED THE WAY PEOPLE SEE ART AND THE URBAN LANDSCAPE. AFTER 29 YEARS, HIS WORK HAS EVOLVED INTO AN ACCLAIMED BODY OF ART, WHICH INCLUDES THE 2008 "HOPE" PORTRAIT OF BARACK OBAMA, FOUND AT THE SMITHSONIAN'S NATIONAL PORTRAIT GALLERY. THE ARTIST COLLABORATED WITH AMPLIFIER IN 2017 TO CREATE THE WE THE PEOPLE SERIES RECOGNIZABLE DURING THE WOMEN'S MARCHES AND OTHER RALLIES AROUND THE WORLD IN DEFENSE OF NATIONAL AND GLOBAL SOCIAL JUSTICE ISSUES.

FAIREY'S STICKERS, GUERRILLA STREET ART PRESENCE, AND 85 PLUS PUBLIC MURALS ARE RECOGNIZABLE WORLDWIDE. HIS WORKS ARE IN THE PERMANENT COLLECTIONS OF THE MUSEUM OF MODERN ART (MOMA), THE VICTORIA AND ALBERT MUSEUM, THE SMITHSONIAN'S NATIONAL PORTRAIT GALLERY, THE BOSTON INSTITUTE OF CONTEMPORARY ART, THE SAN FRANCISCO MUSEUM OF MODERN ART, AND MANY OTHERS.

FAIREY'S DISTINCT AND RECOGNIZABLE STYLE IS UNIQUE TO HIM AND TO OBEY. HIS LIFESTYLE IS THE CATALYST FOR ALL THE BRAND DOES AND THE CENTER POINT OF INFLUENCE AND INSPIRATION. THIS SECTION ISOLATES HIS WORK, FROM HIS CLASSIC GRAPHIC STYLE TO FINE ART RENDERINGS ON GARMENTS. EACH SEASON, SHEPARD TACKLES NEW IDEAS AND ADDS HIS SPECIAL TOUCH THAT MAKES OBEY WHAT IT IS.

WE HOPE YOU ENJOY.

165263775 | OBEY IRIS IN BLOOM | D1 - EARLIEST DELIVERY: JANUARY 15TH



DIGITAL VIOLET

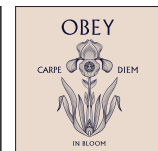
CLASSIC TEE

- PRINTED GRAPHIC ON FRONT AND BACK
- 100% COTTON
- 6 OZ
- REGULAR FIT

S M L XL XXL



BLACK



CREAM

165263776 | OBEY YIN YANG PANTHERS | D1 - EARLIEST DELIVERY: JANUARY 15TH



SAND

CLASSIC TEE

- PRINTED GRAPHIC ON FRONT AND BACK
- 100% COTTON
- 6 OZ
- REGULAR FIT

S M L XL XXL



BLACK



WHITE

165263777 | OBEY FLOWERS PAPERS SCISSORS | D1 - EARLIEST DELIVERY: JANUARY 15TH



CREAM

CLASSIC TEE

- PRINTED GRAPHIC ON FRONT AND BACK
- 100% COTTON
- 6 OZ
- REGULAR FIT

S M L XL XXL



NAVY



WHITE

165263778 | OBEY FUTURE TENSE | D1 - EARLIEST DELIVERY: JANUARY 15TH

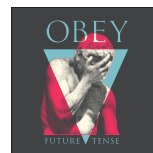


WHITE

CLASSIC TEE

- PRINTED GRAPHIC ON FRONT AND BACK
- 100% COTTON
- 6 OZ
- REGULAR FIT

S M L XL XXL



BLACK



SAND

165263773 | OBEY PHOENIX | D1 - EARLIEST DELIVERY: JANUARY 15TH



NAVY

CLASSIC TEE

- PRINTED GRAPHIC ON FRONT AND BACK
- 100% COTTON
- 6 OZ
- REGULAR FIT

S M L XL XXL



BLACK



SAND

165263780 | OBEY GREEN POWER FACTORY | D1 - EARLIEST DELIVERY: JANUARY 15TH



BLACK

CLASSIC TEE

- PRINTED GRAPHIC ON FRONT AND BACK
- 100% COTTON
- 6 OZ
- REGULAR FIT

S M L XL XXL



CITRUS



WHITE

165263781 | OBEY POST MODERN | D1 - EARLIEST DELIVERY: JANUARY 15TH



CREAM

CLASSIC TEE

- PRINTED GRAPHIC ON FRONT AND BACK
- 100% COTTON
- 6 OZ
- REGULAR FIT

S M L XL XXL



BLACK



WHITE

165263774 | OBEY SPIRITUALLY RICH | D1 - EARLIEST DELIVERY: JANUARY 15TH



BLACK

CLASSIC TEE

- PRINTED GRAPHIC ON FRONT AND BACK
- 100% COTTON
- 6 OZ
- REGULAR FIT

S M L XL XXL



SILT



CREAM

165263782 | OBEY RIPPED ICON | D1 - EARLIEST DELIVERY: JANUARY 15TH



BLACK

CLASSIC TEE

- PRINTED GRAPHIC ON FRONT AND BACK
- 100% COTTON
- 6 OZ
- REGULAR FIT

S M L XL XXL



DIGITAL VIOLET



WHITE

165263779 | OBEY NEW CLEAR POWER | D1 - EARLIEST DELIVERY: JANUARY 15TH



CUCUMBER

CLASSIC TEE

- PRINTED GRAPHIC ON FRONT AND BACK
- 100% COTTON
- 6 OZ
- REGULAR FIT

S M L XL XXL



BLACK



CREAM

117463777 | OBEY FLOWERS PAPERS SCISSORS | D1 - EARLIEST DELIVERY: JANUARY 15TH



UNBLEACHED

PREMIUM FRENCH TERRY HOODED SWEATSHIRT

- PRINTED GRAPHIC ON FRONT AND BACK
- 58% COTTON 42% POLYESTER
- 16 OZ
- RELAXED FIT

XS S M L XL XXL



BLACK

117463779 | OBEY NEW CLEAR POWER | D1 - EARLIEST DELIVERY: JANUARY 15TH



BLACK

PREMIUM FRENCH TERRY HOODED SWEATSHIRT

- PRINTED GRAPHIC ON FRONT AND BACK
- 58% COTTON 42% POLYESTER
- 16 OZ
- RELAXED FIT

XS S M L XL XXL



UNBLEACHED

121800233 | BASTARDS LEATHER JACKET | D1 - EARLIEST DELIVERY: JANUARY 15TH



BLACK

LEATHER JACKET

- MOTORCYCLE REAL LEATHER JACKET WITH SILVER HARDWARE
- 100% LEATHER
- RELAXED FIT

S M L XL XXL

121800239 | BASTARDS PU JACKET | D1 - EARLIEST DELIVERY: JANUARY 15TH



BLACK

PU JACKET

- MOTORCYCLE PU JACKET WITH SILVER HARDWARE
- 100% PU
- RELAXED FIT

S M L XL XXL

100553777 | OBEY FLOWERS PAPERS SCISSORS | D1 - EARLIEST DELIVERY: JANUARY 15TH

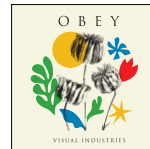


BLACK

TOTE BAG

- PRINTED GRAPHIC ON FRONT
- 100% COTTON
- 6 OZ
- REGULAR FIT

O/S



CREAM

326000035M | COVERT TO OVERT BOOK | D1 - EARLIEST DELIVERY: JANUARY 15TH



ASSORTED

COVERT TO OVERT: THE UNDER/OVERGROUND ART OF SHEPARD FAIREY

- HARD COPY PAPER BOOK
- 100% PAPER

O/S

ICON COLLECTION

THE OBEY ICON COLLECTION REPRESENTS THE ORIGINS AND ICONOGRAPHY OF OBEY FROM THE PAST, TO THE PRESENT. THIS COLLECTION IS EMBELLISHED WITH THE CLASSIC OBEY ICON FACE THAT IS A HIGHLY RECOGNIZED IMAGE IN STREETS AND CITIES WORLDWIDE. THIS ICON AND ITS USE IN OBEY CLOTHING REPRESENTS AND SYMBOLIZES THE SPIRIT OF CREATIVITY, REBELLION, AND A QUESTION EVERYTHING ATTITUDE. THIS COLLECTION OF APPAREL IS MEANT TO CELEBRATE OUR ROOTS AS A BRAND AND A MOVEMENT WHILE ALSO LETTING THE OBEY ICON FACE TEAR THROUGH THE VISUAL CHAOS OF CITIES AROUND THE WORLD.

THE MEDIUM IS THE MESSAGE



121800557 | OBEY ICON FACE VARSITY | D1 - EARLIEST DELIVERY: JANUARY 15TH



UNBLEACHED

TWILL VARSITY JACKET

- CENTER FRONT LOGO SNAP BUTTON CLOSURE
- BOTTOM DOUBLE WELT POCKET OPENINGS
- 1 X 1 STRIPE RIB AT WAISTBAND AND CUFFS
- OBEY BOLD FONT EMBROIDERY AT CHEST
- CHENILLE ICON FACE PATCH AT BACK
- OBEY SIDE SEAM FLAG LABEL

- SHELL: 100% COTTON
- LINING: 100% COTTON
- IMPORTED

- RELAXED FIT

XS S M L XL XXL



BLACK

112470196 | ICON EXTRA HEAVY HOOD II | D1 - EARLIEST DELIVERY: JANUARY 15TH



BLACK

EXTRA HEAVYWEIGHT HOODED FLEECE

- EMBROIDERED GRAPHIC AT CHEST
- PREMIUM HEAVY WEIGHT BRUSHED BACK FABRIC
- NO HOOD DRAWCORD
- RIB KNIT CUFFS AND HEM
- FRONT POCKET

- 70% COTTON 30% POLYESTER
- 16 OZ
- IMPORTED

- RELAXED FIT

XS S M L XL XXL



SILVER GREY



HYDRANGEA

112480139 | ICON EXTRA HEAVY CREW II | D1 - EARLIEST DELIVERY: JANUARY 15TH



HYDRANGEA

EXTRA HEAVYWEIGHT CREW FLEECE

- EMBROIDERED GRAPHIC AT CHEST
- PREMIUM HEAVY WEIGHT BRUSHED BACK FABRIC
- RIB KNIT CUFFS AND HEM

- 70% COTTON 30% POLYESTER
- 16 OZ
- IMPORTED

- RELAXED FIT

XS S M L XL XXL



BLACK



SILVER GREY

166913013 | ICON HEAVYWEIGHT TEE | D1 - EARLIEST DELIVERY: JANUARY 15TH



JET BLACK

HEAVYWEIGHT BOX TEE

- GARMENT DYED
- PRINTED GRAPHIC ON FRONT AND BACK

- 100% COTTON
- 8 OZ

- RELAXED FIT

S M L XL XXL



HYDRANGEA



SURF SPRAY



SILVER GREY

166913439 | OBEY BOLD ICON HEAVYWEIGHT TEE | D1 - EARLIEST DELIVERY: JANUARY 15TH



SEPIA

HEAVYWEIGHT BOX TEE

- GARMENT DYED
 - PRINTED GRAPHIC ON FRONT AND BACK
 - 100% COTTON
 - 8 OZ
 - RELAXED FIT
- S M L XL XXL



JET BLACK SURF BLUE WHITE

100580303 | ICON PATCH 6 PANEL STRAPBACK | D1 - EARLIEST DELIVERY: JANUARY 15TH



BLACK

LOW PROFILE SNAPBACK HAT

- PIGMENT TWILL
 - SNAPBACK CLOSURE
 - EMBROIDERED OBEY LOGO
 - 100% COTTON
 - IMPORTED
- O/S



ARMY WHITE

100149101 | ICON PATCH CAMP HAT | D1 - EARLIEST DELIVERY: JANUARY 15TH



ARMY

LOW PROFILE SNAPBACK HAT

- PIGMENT TWILL
- SNAPBACK CLOSURE
- EMBROIDERED OBEY LOGO

- 100% NYLON
- IMPORTED

O/S



BLACK

ORCHID PETAL

100030198 | ICON PATCH CUFF BEANIE | D1 - EARLIEST DELIVERY: JANUARY 15TH



ORCHID PETAL

STANDARD CUFFED BEANIE

- PIGMENT TWILL
- SNAPBACK CLOSURE
- EMBROIDERED OBEY LOGO

- 100% ACRYLIC
- IMPORTED

O/S



BLACK

UNBLEACHED

BIG WIG COLLECTION

THE OBEY BIGWIG COLLECTION REPRESENTS THE FREEDOM OF BIG EXPRESSION AND BIG EXPERIMENTATION BOTH IN CUT AND SEW AS WELL AS GRAPHICS, AND ART. THE ENERGY OF THE BIGWIG COLLECTION IS A PLACE WHERE A PERSON CAN EXPERIMENT, CREATE, PLAY, AND MIX CONCEPTS AND GARMENT PROPORTIONS AND GRAPHICS THAT ARE MORE FRINGE AND DIFFERENT FROM THE NORM. IT'S CURRENTLY A HOME FOR GIANT PANTS AND FRINGE TEE GRAPHICS PAIRED WITH MORE SUBTLE CUT AND SEW PIECES THAT REPRESENT THE SUB CULTURES AND STYLES WE ARE INSPIRED BY.

THE IDEAS ARE YOUTHFUL IN SPIRIT AND ENERGY. THEY ARE OFTEN EYE CATCHING, FRINGE OR EXPERIMENTAL IN THEIR EXPRESSION, EXECUTION OR PROPORTIONS. THIS COLLECTION IS INSPIRED BY DECADES OF YOUTH ENERGY, CREATIVE CULTURES AND THE SPIRIT OF UNDERGROUND SCENES BOTH PAST AND PRESENT. FOR OBEY THE BIGWIG COLLECTION REPRESENTS THE ROOTS WE CAME FROM AND THE CREATIVE JOURNEY WE ARE ON. IT IS A PLACE WHERE WE TAKE THIS CREATIVE ENERGY, BLEND IT TOGETHER AND HOPEFULLY INSPIRE OTHERS.

THE MEDIUM IS THE MESSAGE





CORONET BLUE MULTI

YARN DYED PLAID SHORT SLEEVE SHIRT

- CASUAL BUTTON-UP SHIRT
- SINGLE CHEST POCKET
- CENTER FRONT FAUX HORN BUTTON CLOSURE
- OBEY EMBROIDERY AT CHEST POCKET
- 100% COTTON
- 4.5 OZ
- IMPORTED
- LOOSE FIT

S M L XL XXL



MOSS GREEN MULTI



GOOD GREY MULTI

YARN DYED PLAID SHORT SLEEVE SHIRT

- STRIPED SHORT SLEEVE SHIRT
- CASUAL BUTTON UP SHIRT
- DOUBLE CHEST POCKET
- CENTER FRONT PEARL BUTTON CLOSURE
- OBEY EMBROIDERY AT CHEST POCKET
- 100% COTTON
- 4.5 OZ
- IMPORTED
- LOOSE FIT

S M L XL XXL



SURF SPRAY MULTI



ACADEMY NAVY MULTI

YARN DYED POLO SHORT SLEEVE SHIRT

- RIB COLLAR
- PEARLIZED LOGO BUTTON PLACKET OPENING
- OBEY LOWERCASE EMBROIDERY AT CHEST

- 100% COTTON
- 6.5 OZ
- IMPORTED

- LOOSE FIT

S M L XL XXL



UNBLEACHED MULTI



BLACK MULTI

TEXTURE STRIPED SHORT SLEEVE TEE

- MULTI COLOR TEXTURE STRIPE JERSEY
- CONTRAST RIB NECKBAND
- OBEY LOWERCASE EMBROIDERY AT CHEST

- 100% COTTON
- 6.5 OZ
- IMPORTED

- LOOSE FIT

S M L XL XXL



ACADEMY NAVY MULTI

131080359 | BIGWIG SOUND RINGER TEE | D1 - EARLIEST DELIVERY: JANUARY 15TH



IRISH CREAM MULTI

- RINGER JERSEY TEE SHORT SLEEVE
- CONTRAST RIB NECKBAND AND CUFFS
 - OBEY EMBROIDERY AT CHEST
 - 100% COTTON
 - 7 OZ
 - IMPORTED
 - LOOSE FIT
- S M L XL XXL



WHITE MULTI

134050060 | TRACE RIB TANK | D1 - EARLIEST DELIVERY: JANUARY 15TH



BLACK

- RIBBED KNIT TANK TOP
- OBEY EMBROIDERY ON CHEST
 - 95% COTTON 5% SPANDEX
 - 9.5 OZ
 - IMPORTED
 - REGULAR FIT
- S M L XL XXL



WHITE

131080361 | BIGWIG VERO MESH JERSEY | D1 - EARLIEST DELIVERY: JANUARY 15TH



BLACK

MESH SHORT SLEEVE FOOTBALL JERSEY

- ATHLETIC MESH
- RIB NECKBAND
- OBEY PRINT AT CHEST

- 100% POLYESTER
- 8 OZ
- IMPORTED

- LOOSE FIT

S M L XL XXL



HYDRANGEA

172120112 | BIGWIG VERO MESH SHORT | D1 - EARLIEST DELIVERY: JANUARY 15TH



HYDRANGEA

BIGWIG MESH SHORT

- ATHLETIC MESH FABRICATION
- ELASTIC WAIST WITH DRAWCORD
- SIDE SEAM FRONT POCKETS
- WELT BACK POCKET
- MESH POCKET BAGS
- OBEY SCREEN PRINT AT FRONT LEG

- 100% POLYESTER
- 8.5 OZ
- IMPORTED

- 7" INSEAM
- BAGGY FIT

S M L XL XXL



BLACK

117463739 | YOU HAVE TO HAVE A DREAM | D1 - EARLIEST DELIVERY: JANUARY 15TH



CORONET BLUE

PREMIUM FRENCH TERRY HOODED SWEATSHIRT

- PRINTED GRAPHIC ON FRONT AND BACK
- 58% COTTON 42% POLYESTER
- 16 OZ
- RELAXED FIT

XS S M L XL XXL



BLACK

117483707 | OBEY ORGANIZED CHAOS | D1 - EARLIEST DELIVERY: JANUARY 15TH



BLACK

PREMIUM FRENCH TERRY HOODED SWEATSHIRT

- PRINTED GRAPHIC ON FRONT AND BACK
- 58% COTTON 42% POLYESTER
- 16 OZ
- RELAXED FIT

XS S M L XL XXL



CORONET BLUE



UNBLEACHED

PREMIUM FRENCH TERRY CREW SWEATSHIRT

- PRINTED GRAPHIC ON FRONT AND BACK
- 58% COTTON 42% POLYESTER
- 16 OZ
- RELAXED FIT

XS S M L XL XXL



CORONET BLUE

163813694 | OBEY HALF ICON | D1 - EARLIEST DELIVERY: JANUARY 15TH



PIGMENT CORONET BLUE

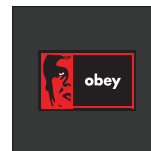
PIGMENT CLASSIC TEE

- PIGMENT GARMENT DYED TEE
- PRINTED GRAPHIC

- 100% COTTON
- 6 OZ

- REGULAR FIT

S M L XL XXL



PIGMENT VINTAGE
BLACK

163813707 | OBEY ORGANIZED CHAOS | D1 - EARLIEST DELIVERY: JANUARY 15TH



PIGMENT VINTAGE BLACK

PIGMENT CLASSIC TEE

- PIGMENT GARMENT DYED TEE
- PRINTED GRAPHIC

- 100% COTTON
- 6 OZ

- REGULAR FIT

S M L XL XXL



PIGMENT VINTAGE
WHITE



PIGMENT JAVA BROWN

PIGMENT CLASSIC TEE

- PIGMENT GARMENT DYED TEE
- PRINTED GRAPHIC

- 100% COTTON
- 6 OZ

- REGULAR FIT

S M L XL XXL



PIGMENT CORONET
BLUE



PIGMENT SUNSET CORAL

PIGMENT CLASSIC TEE

- PIGMENT GARMENT DYED TEE
- PRINTED GRAPHIC

- 100% COTTON
- 6 OZ

- REGULAR FIT

S M L XL XXL



PIGMENT VINTAGE
BLACK

142010087 | BIGWIG BAGGY DENIM | D1 - EARLIEST DELIVERY: JANUARY 15TH



LAUREL WREATH

BIGWIG DENIM

- 5 POCKETS DENIM STYLING
- SHANK BUTTON CLOSURE
- ZIPPER FLY
- EMBROIDERED COIN POCKET BRANDING
- OBEY EYES LABELING ON BACK POCKET
- 100% COTTON
- 13.5 OZ DENIM
- IMPORTED
- BAGGY FIT
- 20" LEG OPENING
- STRAIGHT LEG

26 27 28 29 30 31 32 33 34 36 38



FADED BLACK STONE WASH INDIGO LIGHT INDIGO

142010093 | BIGWIG DENIM CARPENTER PANT | D1 - EARLIEST DELIVERY: JANUARY 15TH



LIGHT INDIGO

BIGWIG CARPENTER DENIM

- 5 POCKETS DENIM STYLING
- SHANK BUTTON CLOSURE
- ZIPPER FLY
- SLASH FRONT POCKET OPENING
- CARPENTER BACK POCKET
- HAMMER LOOP
- FRONT KNEE PANELS
- OBEY EYES LABELING ON BACK POCKET
- 100% COTTON
- 13.5 OZ DENIM
- IMPORTED
- BAGGY FIT
- 20" LEG OPENING
- STRAIGHT LEG

26 27 28 29 30 31 32 33 34 36 38



LAUREL WREATH SILVER GREY

142010094 | BIGWIG CARGO DENIM PANT | D1 - EARLIEST DELIVERY: JANUARY 15TH



SILVER GREY

BIGWIG CARGO DENIM

- DENIM FABRICATION
- SHANK BUTTON CLOSURE
- ZIPPER FLY
- 5 POCKETS STYLING
- SIDE CARGO POCKETS WITH HIDDEN SNAPS
- OBEY EYES LABELING ON RIGHT BACK POCKET

- 100% COTTON
- 13.5 OZ DENIM
- IMPORTED

- BAGGY FIT
- 20" LEG OPENING
- STRAIGHT LEG

26 27 28 29 30 31 32 33 34 36 38



STONE WASH



LIGHT INDIGO

142020218 | BIGWIG BAGGY CORDUROY PANT | D1 - EARLIEST DELIVERY: JANUARY 15TH



DIGITAL BLACK

BIGWIG CORDUROY PANT

- CORDUROY FABRICATION
- 5 POCKETS STYLING
- SHANK BUTTON CLOSURE
- ZIPPER FLY
- COIN POCKET WITH LOGO EMBROIDERY
- RIVETS AT FRONT POCKETS
- OBEY EYES LABELING ON BACK POCKET

- 100% COTTON
- 13.5 OZ DENIM
- IMPORTED

- BAGGY FIT
- 20" LEG OPENING
- STRAIGHT LEG

26 27 28 29 30 31 32 33 34 36 38



MOSS GREEN



SILVER GREY

142020217 | BIGWIG BAGGY TWILL CARGO PANT | D1 - EARLIEST DELIVERY: JANUARY 15TH



LAUREL WREATH

BIGWIG CARGO PANT

- TWILL FABRICATION
 - SHANK BUTTON CLOSURE
 - ZIPPER FLY
 - 5 POCKETS STYLING
 - SIDE CARGO POCKETS WITH HIDDEN SNAPS
 - OBEY EYES LABELING ON LEFT CARGO FLAP POCKET
-
- 100% COTTON
 - 12 OZ DENIM
 - IMPORTED
-
- BAGGY FIT
 - 20" LEG OPENING
 - STRAIGHT LEG

26 27 28 29 30 31 32 33 34 36 38



BLACK SILVER GREY

142020225 | BIGWIG GIANT CHINO PANT | D1 - EARLIEST DELIVERY: JANUARY 15TH



JAVA BROWN

BIGWIG CHINO PANT

- TWILL FABRICATION
 - SHANK BUTTON CLOSURE
 - ZIPPER FLY
 - SLASH FRONT POCKET OPENING
 - COIN POCKET
 - BACK WELTS POCKETS
 - OBEY EYES LABELING ABOVE RIGHT BACK POCKET
-
- 100% COTTON
 - 12 OZ DENIM
 - IMPORTED
-
- BAGGY FIT
 - 20.5" LEG OPENING
 - STRAIGHT LEG

26 27 28 29 30 31 32 33 34 36 38



WASHED BLACK CLAY MOSS GREEN

100580373 | OBEY ACADEMY 6 PANEL CLASSIC SNAPBACK | D1 - EARLIEST DELIVERY: JANUARY 15TH



BLACK

HIGH PROFILE 6 PANEL SNAPBACK HAT

- ACRYLIC WOOL SURGE
- SNAPBACK CLOSURE
- EMBROIDERED OBEY LOGO

- 80% ACRYLIC 20% WOOL
- IMPORTED

O/S



NAVY

DARK CHOCOLATE

FAN FARE

100580374 | OBEY CHAOS 6 PANEL CLASSIC SNAPBACK | D1 - EARLIEST DELIVERY: JANUARY 15TH



CREAM MULTI

HIGH PROFILE 6 PANEL SNAPBACK HAT

- ACRYLIC WOOL SURGE
- SNAPBACK CLOSURE
- EMBROIDERED OBEY LOGO

- 80% ACRYLIC 20% WOOL
- IMPORTED

O/S



BLACK

DENIM COLLECTION

THE OBEY DENIM COLLECTION REPRESENTS A DIVERSE GROUPING OF OBEY DENIM BOTTOMS, JACKETS, AND SHIRTS IN A VARIETY OF FITS AND SHAPES. WE BELIEVE THAT OBEY DENIM AND THE DIVERSITY IN OUR DENIM SHILLOTTES IS MEANT AS A VEHICLE FOR YOUR OWN PERSONAL STYLE AND MENS SELF EXPRESSION. THE BEAUTY OF DENIM IS HOW IT WEARS AND CHANGES OVER TIME TO CREATE ITS OWN KIND OF CHARACTERISTICS JUST LIKE YOU.

THE MEDIUM IS THE MESSAGE.

121800556 | OBEY EASTON JACKET | D1 - EARLIEST DELIVERY: JANUARY 15TH



LIGHT INDIGO

DENIM BLOUSON JACKET

- CENTER FRONT LOGO METAL ZIPPER CLOSURE
- CHEST PATCH POCKETS WITH HIDDEN SNAP FLAP CLOSURES
- BOTTOM DOUBLE WELT POCKET OPENINGS
- DOUBLE LOGO SHANK BUTTONS AT CUFFS & WAISTBAND ENDS
- "OBEY STUDIOS" ART EMBROIDERY ABOVE CHEST POCKET
- OBEY SIDE SEAM FLAG LABEL

- 100% COTTON
- 13.5 OZ
- IMPORTED

- REGULAR FIT

S M L XL XXL



FADED BLACK

121800559 | TRENTON CHORE JACKET | D1 - EARLIEST DELIVERY: JANUARY 15TH



UNBLEACHED

DENIM CHORE JACKET

- FRONT PLACKET LOGO SHANK BUTTON CLOSURE
- CHEST PATCH POCKETS
- BOTTOM SLANT OPENING PATCH POCKETS
- DOUBLE LOGO SHANK BUTTONS AT CUFFS
- OBEY ART LABEL AT CHEST POCKET
- OBEY SIDE SEAM FLAG LABEL

- 100% COTTON
- 13.5 OZ
- IMPORTED

- REGULAR FIT

S M L XL XXL



LIGHT INDIGO



STONE WASH

DENIM VARSITY JACKET

- CENTER FRONT LOGO SNAP BUTTON CLOSURE
- BOTTOM WELT POCKET OPENINGS
- 1 X 1 CUSTOM STRIPE RIB AT WAISTBAND AND CUFFS
- OBEY LOGO EMBROIDERY AT CHEST
- OBEY "VISUAL DESIGN STUDIO" ART EMBROIDERY AT BACK
- OBEY SIDE SEAM FLAG LABEL

- SHELL: 100% COTTON
- 13.5 OZ
- LINING: 100% COTTON
- IMPORTED

- RELAXED FIT

XS S M L XL XXL



CLAY

121160057 | WINSTON SHIRT JACKET | D1 - EARLIEST DELIVERY: JANUARY 15TH



LIGHT INDIGO

DENIM SHIRT JACKET

- FRONT PLACKET LOGO SHANK BUTTON CLOSURE
- FRONT CHEST PATCH POCKETS
- SIDE SEAM POCKET ENTRIES
- SINGLE LOGO SHANK BUTTON AT CUFFS
- OBEY EMBROIDERY ON CHEST POCKET

- 100% COTTON
- 13.5 OZ
- IMPORTED

- REGULAR FIT

S M L XL XXL



FADED BLACK

UNBLEACHED

181200367 | MAGNOLIA SHIRT | D1 - EARLIEST DELIVERY: JANUARY 15TH



ORCHID PETAL

DENIM LONG SLEEVE SHIRT

- BUTTON-UP SHIRT
- SINGLE CHEST POCKET
- CENTER FRONT LOGO SHANK BUTTON CLOSURE
- CURVED BOTTOM HEM
- OBEY EMBROIDERY AT CHEST POCKET

- 100% COTTON
- 13.5 OZ
- IMPORTED

- REGULAR FIT

S M L XL XXL



CLAY

LIGHT INDIGO

142010080 | BENDER DENIM | D1 - EARLIEST DELIVERY: JANUARY 15TH



FADED BLACK

BENDER DENIM

- 5 POCKET DENIM STYLING
- SHANK BUTTON CLOSURE
- BUTTON FLY
- RIVETS AT FRONT POCKETS
- COIN POCKET
- OBEY EYES LABELING ON WEARER’S RIGHT BACK POCKET
- 100% COTTON
- 13 OZ DENIM
- IMPORTED
- REGULAR FIT
- 15.5” LEG OPENING
- TAPERED LEG

26 27 28 29 30 31 32 33 34 36 38



STONE WASH LIGHT INDIGO

142010077 | HARDWORK DENIM | D1 - EARLIEST DELIVERY: JANUARY 15TH



STONE WASH

HARDWORK PANT

- DENIM WORK PANT
- SHANK BUTTON CLOSURE
- BUTTON FLY
- 5 POCKETS DENIM STYLING
- OBEY EYES LABELING AT WEARER’S RIGHT BACK POCKET
- 100% COTTON
- 13.5 OZ DENIM
- IMPORTED
- REGULAR FIT
- 18” LEG OPENING
- STRAIGHT LEG

26 27 28 29 30 31 32 33 34 36 38



FADED BLACK LIGHT INDIGO UNBLEACHED

142010078 | HARDWORK CARPENTER | D1 - EARLIEST DELIVERY: JANUARY 15TH



UNBLEACHED

HARDWORK CARPENTER PANT

- DENIM WORK PANT
- SHANK BUTTON CLOSURE
- ZIPPER FLY
- FRONT SLASH POCKETS WITH SINGLE COIN POCKET
- BACK PATCH POCKET
- CARPENTER POCKETS
- OBEY EYES LABELING ON WEARER'S RIGHT BACK POCKET

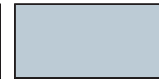
- 100% COTTON
- 13 OZ DENIM
- IMPORTED

- REGULAR FIT
- 18" LEG OPENING
- STRAIGHT LEG

26 27 28 29 30 31 32 33 34 36 38



STONE WASH



LIGHT INDIGO

142010096 | HARDWORK PRINTED DENIM | D1 - EARLIEST DELIVERY: JANUARY 15TH



ROSIN

HARDWORK PRINTED PANT

- DENIM ALLOVER PRINTED WORK PANT
- SHANK BUTTON CLOSURE
- BUTTON FLY
- 5 POCKETS DENIM STYLING
- OBEY EYES LABELING ABOVE BACK WELT POCKET

- 100% COTTON
- 13.5 OZ DENIM
- IMPORTED

- REGULAR FIT
- 18" LEG OPENING
- STRAIGHT LEG

26 27 28 29 30 31 32 33 34 36 38



UNBLEACHED

142010082 | FUBAR PLEATED DENIM | D1 - EARLIEST DELIVERY: JANUARY 15TH



UNBLEACHED

FUBAR DENIM PLEATED PANT

- DENIM FABRICATION
- SHANK BUTTON CLOSURE
- ZIPPER FLY
- SLASH FRONT POCKETS
- PLEATS AT FRONT WAIST
- WELTS BACK POCKETS
- OBEY EYES LABELING ABOVE RIGHT BACK POCKET

- 100% COTTON
- 13.5 OZ DENIM
- IMPORTED

- 16.75" LEG OPENING
- RELAXED TAPERED FIT

26 27 28 29 30 31 32 33 34 36 38



FADED BLACK

LIGHT INDIGO

142010079 | EASY DENIM PANT | D1 - EARLIEST DELIVERY: JANUARY 15TH



LIGHT INDIGO

EASY DENIM PANT

- FULL ELASTIC WAISTBAND WITH ROUNDED DRAWCORD
- FAUX FLY
- SIDE SEAM FRONT SIDE POCKETS
- BACK PATCH POCKETS
- OBEY EYES LABELING AT BACK WEARER'S RIGHT POCKET

- 100% COTTON
- 13.5 OZ DENIM
- IMPORTED

- RELAXED FIT
- 18" LEG OPENING
- TAPERED LEG
-

XS S M L XL XXL



FADED BLACK

UNBLEACHED

PIGMENT DYED COLLECTION

THE OBEY PIGMENT COLLECTION REPRESENTS A GROUPING OF HIGH QUALITY, PREMIUM FABRICS, PIGMENT GARMENT DYED IN CLASSIC SHILLOUTTES IN SEASONAL COLORS. THESE COLORS HAVE A DUSTY DYED EFFECT THAT WILL CHANGE AND EVOLVE THE MORE YOU WEAR AND WASH THE THE PIECES, GIVING EACH PIECE UNIQUE ONE OF A KIND CHARACTERISTICS. THESE PREMIUM DYED GARMENTS ARE MEANT TO BE CLASSIC PIECES, EMBELLISHED WITH CORE OBEY BRANDING AND ICONOGRAPHY TO CREATE LONG LASTING, TIMELESS GARMENTS THAT CAN BE WORN FOR COMFORT NOW AND FOR YEARS TO COME.

THE MEDIUM IS THE MESSAGE

121160054 | DIVISION SHIRT JACKET | D1 - EARLIEST DELIVERY: JANUARY 15TH



PIGMENT FRENCH BLUE

PIGMENT DYED TWILL SHIRT JACKET

- FRONT PLACKET LOGO SHANK BUTTON CLOSURE
- FRONT CHEST PATCH POCKETS WITH SHANK FLAP CLOSURES
- BOTTOM WELT POCKET OPENINGS
- SINGLE LOGO SHANK BUTTON AT CUFFS
- OBEY SIDE SEAM FLAG LABEL
- 100% COTTON
- IMPORTED
- RELAXED FIT

XS S M L XL XXL



PIGMENT BLACK



PIGMENT SURF SPRAY

142020232 | HARDWORK PIGMENT CARPENTER PANT | D1 - EARLIEST DELIVERY: JANUARY 15TH



PIGMENT FRENCH BLUE

HARDWORK PIGMENT PANT

- TWILL PIGMENT WORK PANT
- SHANK BUTTON CLOSURE
- ZIPPER FLY
- 5 POCKETS DENIM STYLING
- CARPENTER POCKETS
- OBEY EYES LABELING ON WEARER'S RIGHT BACK POCKET
- 100% COTTON
- 10.5 OZ DENIM
- IMPORTED
- 18" LEG OPENING
- STRAIGHT LEG

26 27 28 29 30 31 32 33 34 36 38



PIGMENT BLACK



PIGMENT SURF SPRAY

121800555 | AUSTIN UTILITY JACKET | D1 - EARLIEST DELIVERY: JANUARY 15TH



CLAY

PIGMENT DYED UTILITY JACKET

- FRONT PLACKET FAUX HORN BUTTON CLOSURE
- ALL PLEATED PATCH POCKETS WITH BUTTON FLAP CLOSURES
- OBEY SIDE SEAM FLAG LABEL

- SHELL: 70% COTTON 30% NYLON
- LINING: 100% COTTON
- 4.5 OZ
- IMPORTED

- OVERSIZED FIT

XS S M L XL XXL



LAUREL WREATH

181210397 | PIGMENT SULLY WOVEN | D1 - EARLIEST DELIVERY: JANUARY 15TH



PIGMENT PIROUETTE

PIGMENT DYED SHORT SLEEVE SHIRT

- CASUAL BUTTON-UP SHIRT
- SINGLE CHEST POCKET
- CENTER FRONT PEARLIZED BUTTON CLOSURE
- CURVED BOTTOM HEM
- OBEY EMBROIDERY AT CHEST POCKET

- 100% COTTON
- 4.5 OZ
- IMPORTED

- LOOSE FIT

S M L XL XXL



PIGMENT VINTAGE
BLACK



PIGMENT LAUREL
WREATH



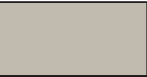
PIGMENT LAUREL WREATH

- HARDWORK DENIM PIGMENT PANT
- DENIM PIGMENT WORK PANT
 - SHANK BUTTON CLOSURE
 - BUTTON FLY
 - 5 POCKETS DENIM STYLING
 - RIVETS AT FRONT POCKETS
 - OBEY EYES LABELING ON WEARER'S RIGHT BACK POCKET
- 100% COTTON
 - 13.5 OZ DENIM
 - IMPORTED
- REGULAR FIT
 - 18" LEG OPENING
 - STRAIGHT LEG

26 27 28 29 30 31 32 33 34 36 38



PIGMENT ORCHID
PETAL



PIGMENT SILVER
GREY

112470194 | LOWERCASE PIGMENT HOOD | D1 - EARLIEST DELIVERY: JANUARY 15TH



PIGMENT DIGITAL
BLACK

EXTRA HEAVYWEIGHT PIGMENT DYED HOODED SWEATSHIRT

- BRUSHED BACK FLEECE
- RIB KNIT CUFFS AND COLLAR
- FRONT POCKET
- OBEY LOWERCASE LOGO EMBROIDERY AT LEFT CHEST
- 100% COTTON
- 16 OZ
- IMPORTED
- RELAXED FIT

XS S M L XL XXL



PIGMENT
HYDRANGEA



PIGMENT SHELL
PINK



PIGMENT CLAY

112460019 | LOWERCASE PIGMENT ZIP HOOD | D1 - EARLIEST DELIVERY: JANUARY 15TH



PIGMENT CORONET
BLUE

EXTRA HEAVYWEIGHT PIGMENT DYED ZIP HOODED SWEATSHIRT

- BRUSHED BACK FLEECE
- RIB KNIT CUFFS AND COLLAR
- FRONT METAL ZIPPER WITH LOGO PULL
- FRONT POCKET
- OBEY LOWERCASE LOGO EMBROIDERY AT LEFT CHEST
- 100% COTTON
- 16 OZ
- IMPORTED
- RELAXED FIT

XS S M L XL XXL



PIGMENT DIGITAL
BLACK



PIGMENT CLAY

112480138 | LOWERCASE PIGMENT CREW | D1 - EARLIEST DELIVERY: JANUARY 15TH



PIGMENT CLAY

EXTRA HEAVYWEIGHT PIGMENT DYED CREW FLEECE

- OBEY LOWERCASE EMBROIDERY AT LEFT CHEST
- PREMIUM HEAVYWEIGHT FABRIC
- RIB KNIT NECKBAND, CUFFS AND HEM

- 100% COTTON
- 18 OZ
- IMPORTED

- RELAXED FIT

XS S M L XL XXL



PIGMENT
CORONET BLUE



PIGMENT SHELL
PINK

142030046 | LOWERCASE PIGMENT SWEATPANT | D1 - EARLIEST DELIVERY: JANUARY 15TH



PIGMENT HYDRANGEA

EXTRA HEAVYWEIGHT FLEECE SWEATPANT

- BRUSHED BACK FLEECE
- ELASTIC WAISTBAND AND HEMS
- SINGLE WEARER'S RIGHT BACK POCKET
- INNER WAIST ROUNDED DRAWCORD
- OBEY LOWERCASE LABEL BACK POCKET

- 100% COTTON
- 14 OZ
- IMPORTED

- RELAXED FIT

XS S M L XL XXL



PIGMENT DIGITAL
BLACK



PIGMENT CLAY



PIGMENT SHELL
PINK

111620088 | LOWERCASE PIGMENT POLO | D1 - EARLIEST DELIVERY: JANUARY 15TH



PIGMENT PEACH
PARFAIT

EXTRA HEAVYWEIGHT PIGMENT DYED FRENCH TERRY POLO

- BUTTON PLACKET CLOSURE
- RIB KNIT CUFFS AND COLLAR
- SIDE VENTS AT HEM
- OBEY LOWERCASE LOGO EMBROIDERY AT LEFT CHEST

- 100% COTTON
- 16 OZ
- IMPORTED

- RELAXED FIT

XS S M L XL XXL



PIGMENT
CORONET BLUE



PIGMENT CLAY

131080353 | LOWERCASE PIGMENT TEE SS | D1 - EARLIEST DELIVERY: JANUARY 15TH



PIGMENT DIGITAL
BLACK

PIGMENT JERSEY SHORT SLEEVE TEE

- PIGMENT GARMENT DYED TEE
- RIB NECKBAND
- OBEY LOWERCASE EMBROIDERY AT CHEST

- 100% COTTON
- 7.5 OZ
- IMPORTED

- REGULAR FIT

XS S M L XL XXL



PIGMENT
HYDRANGEA



PIGMENT SHELL
PINK



PIGMENT CLAY

112470211 | PIGMENT COLLEGIATE EXTRA HEAVY HOOD | D1 - EARLIEST DELIVERY: JANUARY 15TH



PIGMENT CORONET
BLUE

EXTRA HEAVYWEIGHT PIGMENT DYED FRENCH TERRY HOOD

- EMBROIDERED TONAL GRAPHIC AT CHEST
- NO HOOD DRAWCORD
- RIB KNIT CUFFS AND HEM
- 80% COTTON 20% POLYESTER
- 16 OZ
- IMPORTED

- RELAXED FIT

XS S M L XL XXL



PIGMENT PIRATE
BLACK



PIGMENT
DEWBERRY

112470212 | PIGMENT OBEY EYES ICON EXTRA HEAVY HOOD | D1 - EARLIEST DELIVERY: JANUARY 15TH



PIGMENT PIRATE BLACK

EXTRA HEAVYWEIGHT PIGMENT DYED FRENCH TERRY HOODED

- SCREEN PRINT GRAPHIC AT CHEST AND BACK
- NO HOOD DRAWCORD
- RIB KNIT CUFFS AND HEM
- 80% COTTON 20% POLYESTER
- 16 OZ
- IMPORTED

- RELAXED FIT

XS S M L XL XXL



PIGMENT
HYDRANGEA



PIGMENT SHELL
PINK

112480146 | PIGMENT COLLEGIATE EXTRA HEAVY CREW | D1 - EARLIEST DELIVERY: JANUARY 15TH



PIGMENT PINK SHELL

EXTRA HEAVYWEIGHT PIGMENT DYED FRENCH TERRY CREW

- EMBROIDERED TONAL GRAPHIC AT CHEST
- RIB KNIT CUFFS AND HEM

- 80% COTTON 20% POLYESTER
- 16 OZ
- IMPORTED

- RELAXED FIT

XS S M L XL XXL



PIGMENT PIRATE
BLACK



PIGMENT
HYDRANGEA

112480147 | PIGMENT OBEY EYES ICON EXTRA HEAVY CREW | D1 - EARLIEST DELIVERY: JANUARY 15TH



PIGMENT PIRATE BLACK

HEAVYWEIGHT PIGMENT DYED FRENCH TERRY CREW

- SCREEN PRINT GRAPHIC AT CHEST AND BACK
- RIB KNIT CUFFS AND HEM

- 80% COTTON 20% POLYESTER
- 16 OZ
- IMPORTED

- RELAXED FIT

XS S M L XL XXL



PIGMENT
DEWBERRY



PIGMENT PEACH
PARFAIT

100580367 | PIGMENT LOWERCASE 6 PANEL STRAPBACK | D1 - EARLIEST DELIVERY: JANUARY 15TH



PIGMENT CORAL

LOW PROFILE 6 PANEL STRAPBACK

- UNCONSTRUCTED
- PIGMENT TWILL
- STRAPBACK CLOSURE
- EMBROIDERED OBEY LOGO

- 100% COTTON
- IMPORTED

O/S



PIGMENT BLACK

PIGMENT NAVY

PIGMENT TEAL

100580365 | PIGMENT 2 TONE LOWERCASE 6 PANEL STRAPBACK | D1 - EARLIEST DELIVERY: JANUARY 15TH



PIGMENT KHAKI
MULTI

LOW PROFILE 6 PANEL STRAPBACK

- UNCONSTRUCTED
- PIGMENT TWILL
- STRAPBACK CLOSURE
- EMBROIDERED OBEY LOGO

- 100% COTTON
- IMPORTED

O/S



PIGMENT SURF
SPRAY MULTI

PIGMENT CORAL
MULTI



PIGMENT SURF
SPRAY

MID CROWN PIGMENT TWILL BUCKET HAT

- UNCONSTRUCTURED
- PIGMENT TWILL
- EMBROIDERED OBEY LOGO

- 100% COTTON
- IMPORTED

O/S



PIGMENT BLACK

PIGMENT
HYDRANGEA





RECON ARMY

CRINKLED LINEN UTILITY SHIRT JACKET

- FRONT PLACKET PEARLIZED BUTTON CLOSURE
- FRONT CHEST PATCH POCKETS
- SIDE SEAM POCKET ENTRIES
- SINGLE PEARLIZED BUTTON AT CUFFS
- OBEY SIDE SEAM FLAG LABEL
- 55% LINEN 45% VISCOSE
- IMPORTED
- RELAXED FIT

S M L XL XXL



OATMEAL



RECON ARMY

HARDWORK LINEN PANT

- LINEN FABRICATION
- BUTTON CLOSURE
- ZIPPER FLY
- 5 POCKETS STYLING
- CARPENTER POCKETS
- OBEY EYES LABELING ON RIGHT BACK POCKET
- 55% LINEN 45% VISCOSE
- 8.5 OZ
- IMPORTED
- REGULAR FIT
- 18" LEG OPENING
- STRAIGHT LEG

28 29 30 31 32 33 34 36 38



OATMEAL





FRENCH BLUE

PIGMENT DYED BOMBER JACKET

- CENTER FRONT LOGO METAL ZIPPER CLOSURE
- BOTTOM PATCH POCKETS WITH HIDDEN SNAP FLAP CLOSURES
- 1 X 1 RIB AT WAISTBAND AND CUFFS
- OBEY TONAL EMBROIDERY AT CHEST
- OBEY SIDE SEAM FLAG LABEL

- SHELL: 100% COTTON
- LINING: 100% COTTON
- IMPORTED

- LOOSE FIT

XS S M L XL XXL



SILVER GREY



UNBLEACHED

TWILL WORK SHIRT JACKET

- SOLID BUTTONS FOR BULK
- FRONT PATCH POCKETS WITH BUTTON FLAP CLOSURES
- SIDE SEAM POCKET ENTRIES
- SINGLE FAUX HORN BUTTON AT CUFFS
- ART EMBROIDERY AT BACK
- OBEY SIDE SEAM FLAG LABEL

- 100% COTTON
- IMPORTED

- RELAXED FIT

S M L XL XXL



FRENCH BLUE



HYDRANGEA

WAFFLE ZIP UP SHIRT JACKET

- CENTER FRONT BEADED METAL ZIPPER CLOSURE
- FRONT CHEST PATCH POCKETS
- SIDE SEAM POCKET ENTRIES
- DOUBLE FAUX HORN BUTTONS AT CUFFS
- OBEY SIDE SEAM FLAG LABEL
- 100% COTTON
- IMPORTED
- RELAXED FIT

S M L XL XXL



CLAY



151000080 | TEAR DROP OPEN KNIT SHIRT | D1 - EARLIEST DELIVERY: JANUARY 15TH



UNBLEACHED

CROCHET KNIT BUTTON FRONT POLO SHIRT

- CROCHET PATTERN KNIT
- PEARLIZED BUTTON PLACKET CLOSURE
- RIB COLLAR, PLACKET, WAIST AND CUFF
- OBEY SIDE FLAG LABEL

- 100% COTTON
- IMPORTED

- REGULAR FIT

S M L XL XXL



HYDRANGEA

151000081 | ALBERT POLO SWEATER | D1 - EARLIEST DELIVERY: JANUARY 15TH



TARRAGON
GREEN MULTI

TEXTURED JACQUARD SWEATER POLO SHIRT

- RIB COLLAR, PLACKET, WAISTBAND AND CUFFS
- VERTICLE CONTRAST BAND AT FRONT
- PEARLIZED BUTTON PLACKET CLOSURE
- OBEY SIDE FLAG LABEL

- 100% COTTON
- IMPORTED

- REGULAR FIT

S M L XL XXL



ORCHID PETAL
MULTI

151000082 | CROWD SURFING SWEATER | D1 - EARLIEST DELIVERY: JANUARY 15TH



BLACK MULTI

JACQUARD CREW NECK SWEATER

- ALLOVER JACQUARD PATTERN
- RIB NECKBAND, WAISTBAND AND CUFFS
- OBEY SIDE FLAG LABEL

- 100% COTTON
- IMPORTED

- REGULAR FIT

S M L XL XXL



CORONET BLUE
MULTI

151000083 | CLYNTON SWEATER VEST | D1 - EARLIEST DELIVERY: JANUARY 15TH



MULTI

YARN DYE SWEATER VEST

- RIB NECKBAND, WAISTBAND AND ARMHOLE
- OBEY SIDE FLAG

- 100% COTTON
- IMPORTED

- REGULAR FIT

S M L XL XXL



UNBLEACHED
MULTI

151000084 | ALFRED POLO SWEATER | D1 - EARLIEST DELIVERY: JANUARY 15TH



HYDRANGEA

TEXTURED POLO SHORT SLEEVE SWEATER

- RIB COLLAR, WAISTBAND, PLACKET AND CUFFS
- PEARLIZED BUTTON PLACKET CLOSURE
- OBEY SIDE FLAG
- 100% COTTON
- IMPORTED
- REGULAR FIT

S M L XL XXL



SILVER GREY

151010036 | ANDERSON 60'S CARDIGAN | D1 - EARLIEST DELIVERY: JANUARY 15TH



GREEN MULTI

POCKET SWEATER CARDIGAN

- JACQUARD SWEATER
- RIB NECKBAND, WAISTBAND AND CUFFS
- PEARLIZED BUTTON RIBBED PLACKET CLOSURE
- FRONT POCKET WITH RIB OPENING
- OBEY SIDE FLAG
- 100% COTTON
- IMPORTED
- REGULAR FIT

S M L XL XXL



CORONET BLUE
MULTI





GOOD GREY
MULTI

YARN DYE PLAID TENCEL SHORT SLEEVE SHIRT

- CONVERTIBLE CAMP COLLAR
- DOUBLE CHEST POCKETS
- CENTER FRONT PEARLIZED BUTTON CLOSURE
- STRAIGHT HEM WITH SIDE SEAM VENTS
- OBEY SIDE SEAM FLAG LABEL
- 100% TENCEL
- 4 OZ
- IMPORTED
- RELAXED FIT

S M L XL XXL



UNBLEACHED
MULTI



SILVER GREY

DOBBY SHORT SLEEVE SHIRT

- CONVERTIBLE CAMP COLLAR
- SINGLE CHEST POCKET
- CENTER FRONT PEARLIZED BUTTON CLOSURE
- STRAIGHT HEM WITH SIDE SEAM VENTS
- OBEY SIDE SEAM FLAG LABEL
- 100% COTTON
- 5.5 OZ
- IMPORTED
- RELAXED FIT

S M L XL XXL



HYDRANGEA



PIROUETTE

WAFFLE TEXTURE SHORT SLEEVE SHIRT

- CONVERTIBLE CAMP COLLAR
- SINGLE CHEST POCKET
- CENTER FRONT PEARLIZED BUTTON CLOSURE
- STRAIGHT HEM WITH SIDE SEAM VENTS
- OBEY SIDE SEAM FLAG LABEL
- 100% COTTON
- 6 OZ
- IMPORTED
- RELAXED FIT

S M L XL XXL



UNBLEACHED



FAIRWAY
MULTI

PRINTED VISCOSE SHORT SLEEVE SHIRT

- CONVERTIBLE CAMP COLLAR
- SINGLE CHEST POCKET
- CENTER FRONT PEARLIZED BUTTON CLOSURE
- STRAIGHT HEM WITH SIDE SEAM VENTS
- OBEY SIDE SEAM FLAG LABEL
- 100% VISCOSE
- 5 OZ
- IMPORTED
- RELAXED FIT

S M L XL XXL



TEAL BLUE
MULTI

181210396 | PAISLEY DOTS WOVEN | D1 - EARLIEST DELIVERY: JANUARY 15TH



WHITE SMOKE
MULTI

PRINTED VISCOSE SHORT SLEEVE SHIRT

- CONVERTIBLE CAMP COLLAR
- SINGLE CHEST POCKET
- CENTER FRONT PEARLIZED BUTTON CLOSURE
- STRAIGHT HEM WITH SIDE SEAM VENTS
- OBEY SIDE SEAM FLAG LABEL

- 100% VISCOSE
- 5 OZ
- IMPORTED

- RELAXED FIT

S M L XL XXL



DRAGON FLY
MULTI

181210395 | JUMBO BERRIES WOVEN | D1 - EARLIEST DELIVERY: JANUARY 15TH



EDEN MULTI

PRINTED POPLIN SHORT SLEEVE SHIRT

- CONVERTIBLE CAMP COLLAR
- SINGLE CHEST POCKET
- CENTER FRONT PEARLIZED BUTTON CLOSURE
- STRAIGHT HEM WITH SIDE SEAM VENTS
- OBEY SIDE SEAM FLAG LABEL

- 100% COTTON
- 4.5 OZ
- IMPORTED

- REGULAR FIT

S M L XL XXL



FLAMINGO
PINK MULTI



WHITE MULTI

YARN DYE STRIPED SHORT SLEEVE TEE

- MULTI COLOR STRIPE
- RIB NECKBAND
- OBEY LOWERCASE EMBROIDERY AT CHEST
- 100% COTTON
- 7 OZ
- IMPORTED
- REGULAR FIT

S M L XL XXL



ACADEMY NAVY
MULTI



OYSTER GREY

TEXTURED TERRY CLOTH POLO SHORT SLEEVE

- TERRY CLOTH JACQUARD PATTERN
- RIB COLLAR, WAISTBAND AND CUFFS
- PEARLIZED LOGO BUTTON PLACKET OPENING
- OBEY LOWERCASE EMBROIDERY AT CHEST
- 80% COTTON 20% POLYESTER
- 9.5 OZ
- IMPORTED
- REGULAR FIT

S M L XL XXL



HYDRANGEA



BLACK

TEXTURE JACQUARD ZIP POLO SHORT SLEEVE

- RIB COLLAR AND CUFFS
- METAL ZIPPER PLACKET WITH BEADED PULL.
- OBEY EMBROIDERY AT CHEST
- 100% COTTON
- 6.5 OZ
- IMPORTED
- REGULAR FIT

S M L XL XXL



SILVER GREY



ORCHID PETAL
MULTI

TEXTURE JACQUARD FULL PLACKET POLO SHORT SLEEVE

- RIB COLLAR, PLACKET, HEM AND CUFFS
- PEARLIZED LOGO BUTTONS FRONT PLACKET
- OBEY SIDE FLAG LABEL
- 100% COTTON
- 8.5 OZ
- IMPORTED
- REGULAR FIT

S M L XL XXL



BLACK MULTI



112470207 | CHOIR HOOD | D1 - EARLIEST DELIVERY: JANUARY 15TH



CORONET BLUE

HEAVYWEIGHT HOODED SWEATSHIRT

- EMBROIDERED GRAPHIC AT CHEST
- ROUND DRAWCORD AT HOOD
- RIB KNIT CUFFS AND HEM
- FRONT POCKET.
- 58% COTTON 42% POLYESTER
- 14 OZ
- IMPORTED
- REGULAR FIT

XS S M L XL XXL



BLACK



PEACH PARFAIT

112470209 | OBEY STUDIOS HOOD | D1 - EARLIEST DELIVERY: JANUARY 15TH



BLACK

HEAVYWEIGHT HOODED SWEATSHIRT

- BRUSHED BACK FLEECE
- ROUND DRAWCORD AT HOOD
- RIB KNIT CUFFS AND HEM
- FRONT POCKET
- OBEY EMBROIDERY ON LEFT CHEST AND BACK
- 58% COTTON 42% POLYESTER
- 14 OZ
- IMPORTED
- REGULAR FIT

XS S M L XL XXL



UNBLEACHED



HYDRANGEA

HEAVYWEIGHT HOODED SWEATSHIRT

- BRUSHED BACK FLEECE
- ROUND DRAWCORD AT HOOD
- RIB KNIT CUFFS AND HEM
- FRONT POCKET
- OBEY EMBROIDERY ON LEFT CHEST AND BACK

- 58% COTTON 42% POLYESTER
- 14 OZ
- IMPORTED

- REGULAR FIT

XS S M L XL XXL



BLACK



BLACK

HEAVYWEIGHT HOODED SWEATSHIRT

- BRUSHED BACK FLEECE
- ROUND DRAWCORD AT HOOD
- RIB KNIT CUFFS AND HEM
- FRONT POCKET
- OBEY EMBROIDERY ON LEFT CHEST AND BACK

- 58% COTTON 42% POLYESTER
- 14 OZ
- IMPORTED

- REGULAR FIT

XS S M L XL XXL



AVENTURINE
GREEN



CORONET BLUE

HEAVYWEIGHT CREW SWEATSHIRT

- BRUSHED BACK FLEECE
- EMBROIDERED GRAPHIC AT CHEST AND BACK
- RIB KNIT CUFFS AND HEM
- OBEY LOGO EMBROIDERY AT LEFT CUFFS

- 58% COTTON 42% POLYESTER
- 14 OZ
- IMPORTED

- REGULAR FIT

XS S M L XL XXL



BLACK



PEACH PARFAIT

HEAVYWEIGHT CREW SWEATSHIRT

- BRUSHED BACK FLEECE
- EMBROIDERED GRAPHIC AT CHEST
- RIB KNIT CUFFS AND HEM
- OBEY LOGO EMBROIDERY AT LEFT CUFFS

- 58% COTTON 42% POLYESTER
- 14 OZ
- IMPORTED

- REGULAR FIT

XS S M L XL XXL



UNBLEACHED

111620093 | BRODWICK POLO SWEATSHIRT LS | D1 - EARLIEST DELIVERY: JANUARY 15TH



AVENTURINE
GREEN MULTI

HEAVYWEIGHT POLO SWEATSHIRT

- BRUSHED BACK FLEECE
- RIB COLLAR, HEM AND CUFFS
- PEARLIZED LOGO BUTTONS AT PLACKET
- CONTRAST INSERT PANEL AT FRONT
- OBEY LOWERCASE EMBROIDERY ON CHEST

- 100% COTTON
- 14 OZ
- IMPORTED

- REGULAR FIT

S M L XL XXL



UNBLEACHED
MULTI

111620092 | FONTANA ZIP FRONT POLO SWEATSHIRT | D1 - EARLIEST DELIVERY: JANUARY 15TH



ORCHID PEDAL

HEAVYWEIGHT FULL ZIP POLO SWEATSHIRT

- BRUSHED BACK FLEECE
- RIB STRIPED COLLAR AND CUFFS
- SOLID HEM RIB
- POCKETS AT BOTTOM SHIRT
- COIL ZIPPER WITH METAL PULL
- OBEY LOWERCASE EMBROIDERY ON CHEST

- 100% COTTON
- 14 OZ
- IMPORTED

- REGULAR FIT

S M L XL XXL



ACADEMY NAVY



142020228 | HARDWORK WORK PANT | D1 - EARLIEST DELIVERY: JANUARY 15TH



UNBLEACHED

HARDWORK PANT

- COTTON/POLY TWILL WORK PANT
- SHANK BUTTON CLOSURE
- ZIPPER FLY
- BACK WELT POCKET
- BUTTON AT WEARER'S LEFT BACK POCKET
- OBEY EYES LABELING ABOVE BACK WELT POCKET
- 60% COTTON 40% POLYESTER
- 10.5 OZ
- IMPORTED
- REGULAR FIT
- 18" LEG OPENING
- STRAIGHT LEG

28 29 30 31 32 33 34 36 38



WASHED BLACK JAVA BROWN SCOUT GREEN



BLACK

142020227 | HARDWORK FLOODED WORK PANT | D1 - EARLIEST DELIVERY: JANUARY 15TH

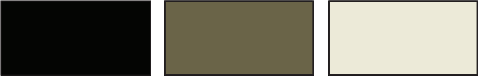


WASHED BLACK

HARDWORK FLOODED PANT

- COTTON/POLY TWILL WORK PANT
- SHANK BUTTON CLOSURE
- ZIPPER FLY
- BACK WELT POCKET
- BUTTON AT WEARER'S LEFT BACK POCKET
- OBEY EYES LABELING ABOVE BACK WELT POCKET
- 60% COTTON 40% POLYESTER
- 10.5 OZ
- IMPORTED
- REGULAR FIT
- 18" LEG OPENING
- STRAIGHT LEG

28 29 30 31 32 33 34 36 38



BLACK SCOUT GREEN UNBLEACHED



JAVA BROWN

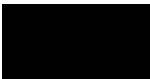


PIROUETTE

HARDWORK PLEATED PANT

- TWILL WORK PANT
- SHANK BUTTON CLOSURE
- ZIPPER FLY
- BACK WELT POCKET
- FRONT PLEATS
- OBEY EYES LABELING ABOVE BACK WELT POCKET
- 100% COTTON
- 12 OZ
- IMPORTED
- REGULAR FIT
- 18" LEG OPENING
- STRAIGHT LEG

28 29 30 31 32 33 34 36 38



BLACK



WASHED BLACK



JAVA BROWN



CLAY

142020184 | HARDWORK CARPENTER PANT | D1 - EARLIEST DELIVERY: JANUARY 15TH



FLORAL MULTI

HARDWORK CARPENTER PANT

- TWILL WORK PANT
 - SHANK BUTTON CLOSURE
 - ZIPPER FLY
 - 5 POCKETS STYLING
 - CARPENTER POCKETS
 - OBEY EYES LABELING AT WEARER'S RIGHT BACK POCKET
-
- 100% COTTON
 - 12 OZ
 - IMPORTED
-
- REGULAR FIT
 - 18" LEG OPENING
 - STRAIGHT LEG

26 27 28 29 30 31 32 33 34 36 38



BLACK ARMY UNBLEACHED

142020229 | HARDWORK RIPSTOP CARGO PANT | D1 - EARLIEST DELIVERY: JANUARY 15TH



LIGHT ARMY

HARDWORK RIPSTOP PANT

- RIPSTOP FABRICATION
 - BUTTON CLOSURE
 - ZIPPER FLY
 - 5 POCKETS STYLING
 - SIDE CARGO POCKET.
 - FLAP BACK POCKETS WITH HIDDEN SNAPS
 - SIDE WAIST ADJUSTER TAB
 - OBEY EYES LABELING ON WEARER'S LEFT CARGO POCKET
-
- 100% COTTON
 - 7 OZ
 - IMPORTED
-
- REGULAR FIT
 - 18" LEG OPENING
 - STRAIGHT LEG

26 27 28 29 30 31 32 33 34 36 38



BLACK SILVER GREY

142020211 | BIG TIMER TWILL DOUBLE KNEE CARPENTER PANT | D1 - EARLIEST DELIVERY: JANUARY 15TH



UNBLEACHED

BIG TIMER CARPENTER PANT

- TWILL FABRICATION
 - 5 POCKETS STYLING
 - SHANK BUTTON CLOSURE
 - ZIPPER FLY
 - SLASH FRONT POCKET OPENING
 - COIN POCKET
 - CARPENTER BACK POCKET
 - HAMMER LOOP
 - FRONT KNEE PANELS
 - OBEY EYES LABELING ON BACK POCKET
-
- 100% COTTON
 - 12 OZ
 - IMPORTED
-
- RELAXED FIT
 - 19" LEG OPENING
 - STRAIGHT LEG

26 27 28 29 30 31 32 33 34 36 38



BLACK



ORCHID PETAL

142020224 | BIG TIMER UTILITY PANT | D1 - EARLIEST DELIVERY: JANUARY 15TH



RECON ARMY

BIG TIMER UTILITY PANT

- BUTTON CLOSURE
 - ZIPPER FLY
 - PATCHED FRONT POCKET
 - BACK PATCH POCKETS WITH FLAP
 - FLAT TAPING DRAWCORD AT WAIST
 - SIDE WAIST ADJUSTER TABS
 - OBEY EYES LABELING ABOVE RIGHT BACK POCKET FLAP
-
- 100% COTTON
 - 10 OZ
 - IMPORTED
-
- RELAXED FIT
 - 19" LEG OPENING
 - STRAIGHT LEG

26 27 28 29 30 31 32 33 34 36 38



JAVA BROWN



UNBLEACHED

142020223 | BIG TIMER CARGO PANT | D1 - EARLIEST DELIVERY: JANUARY 15TH



LIGHT ARMY

BIG TIMER CARGO PANT

- CRISPY POPLIN
- BUTTON CLOSURE
- ZIPPER FLY
- SLASH FRONT POCKET OPENING
- CARGO SIDE POCKETS
- BACK FLAP POCKETS
- FRONT KNEE PLEATS
- SIDE WAIST ADJUSTER TABS
- OBEY EYES LABELING ON LEFT CARGO POCKET FLAP

- 100% COTTON
- 5.5 OZ
- IMPORTED

- RELAXED FIT
- 19" LEG OPENING
- STRAIGHT LEG

26 27 28 29 30 31 32 33 34 36 38



WASHED BLACK



SILVER GREY

142020235 | BIG TIMER POPLIN WORK PANT | D1 - EARLIEST DELIVERY: JANUARY 15TH



CORONET BLUE

BIG TIMER PANT

- POPLIN WORK PANT
- HOOK AND EYE WAIST CLOSURE
- ZIPPER FLY
- WELT BACK POCKETS
- OBEY EYES LABELING ABOVE BACK WELT POCKET

- 65% POLY 35% COTTON
- 6.5 OZ
- IMPORTED

- RELAXED FIT
- 19" LEG OPENING
- STRAIGHT LEG

28 29 30 31 32 33 34 36 38



VINTAGE BLACK



CLAY

142020142 | EASY TWILL PANT | D1 - EARLIEST DELIVERY: JANUARY 15TH



BLACK

EASY TWILL PANT

- TWILL FABRICATION
 - FULL ELASTIC WAISTBAND WITH ROUNDED DRAWCORD
 - FAUX FLY
 - SIDE SEAM FRONT SIDE POCKETS
 - BACK WELT POCKETS
 - OBEY EYES LABELING ABOVE WELT POCKET
-
- 100% COTTON
 - 10.5 OZ
 - IMPORTED
-
- RELAXED FIT
 - 18" LEG OPENING
 - TAPERED LEG

XS S M L XL XXL



SURF SPRAY IRISH CREAM UNBLEACHED

142020195 | EASY CORD PANT | D1 - EARLIEST DELIVERY: JANUARY 15TH



ORCHID PETAL

EASY CORDUROY PANT

- CORDUROY FABRICATION
 - FULL ELASTIC WAISTBAND WITH ROUNDED DRAWCORD
 - FAUX FLY
 - SIDE SEAM FRONT SIDE POCKETS
 - BACK PATCH POCKETS
 - OBEY EYES LABELING AT BACK WEARER'S RIGHT POCKET
-
- 100% COTTON
 - 10.5 OZ
 - IMPORTED
-
- RELAXED FIT
 - 19" LEG OPENING
 - STRAIGHT LEG

XS S M L XL XXL



DIGITAL BLACK IRISH CREAM



DARK BROWN

EASY RIPSTOP CARGO PANT

- RIPSTOP FABRICATION
 - FULL ELASTIC WAISTBAND WITH ROUNDED DRAWCORD
 - FAUX FLY
 - SIDE SEAM FRONT SIDE POCKETS
 - BACK PATCH POCKETS
 - OBEY EYES LABELING AT BACK WEARER’S RIGHT POCKET
-
- 100% COTTON
 - 7 OZ
 - IMPORTED
-
- RELAXED FIT
 - 19” LEG OPENING
 - STRAIGHT LEG

XS S M L XL XXL



BLACK



FIELD GREEN

142020236 | GIANT PARACHUTE CARGO PANT | D1 - EARLIEST DELIVERY: JANUARY 15TH



SILVER GREY

GIANT PARACHUTE CARGO PANT

- CRISPY POPLIN
 - HIDDEN SNAP WAIST CLOSURE
 - ZIPPER FLY
 - ELASTIC WAISTBAND WITH DRAWCORD AND CORD STOPPER
 - SIDE CARGO POCKETS
 - BACK PATCHED POCKETS WITH FLAP & HIDDEN SNAPS CLOSURE
 - DRAWCORD AT LEG OPENING
 - PLEATS AT KNEE
 - OBEY EYES LABELING ON WEARER'S LEFT CARGO FLAP
- 70% COTTON 30% NYLON
 - 4.5 OZ
 - IMPORTED
- GIANT FIT
 - 23.5" LEG OPENING
 - STRAIGHT LEG

XS S M L XL XXL



JAVA
BROWN

142020231 | STRAGGLER WORK PANT | D1 - EARLIEST DELIVERY: JANUARY 15TH



SCOUT GREEN

STRAGGLER WORK PANT

- STRETCH TWILL WORK PANT
 - BUTTON CLOSURE
 - ZIPPER FLY
 - SLASH FRONT POCKETS
 - WELT POCKETS
 - OBEY EYES LABELING ABOVE BACK WELT POCKET
- 60% COTTON 39% POLYESTER 1% SPANDEX
 - 10.5 OZ
 - IMPORTED
- SLIM FIT
 - 16" LEG OPENING
 - STRAIGHT LEG

28 29 30 31 32 33 34 36 38



BLACK



UNBLEACHED

142020201 | FUBAR PLEATED PANT | D1 - EARLIEST DELIVERY: JANUARY 15TH



FUBAR PLEATED PANT

- BUTTON FRONT CLOSURE
- ZIPPER FLY
- SLASH FRONT POCKETS
- PLEATS AT FRONT WAIST
- DOUBLE WELTS BACK POCKETS
- OBEY EYES LABELING ABOVE RIGHT BACK POCKET

- 65% COTTON 35% RAYON
- 8 OZ
- IMPORTED

- RELAXED FIT
- 16.75" LEG OPENING
- TAPERED LEG

26 27 28 29 30 31 32 33 34 36 38



BLACK



JAVA
BROWN

SURF SPRAY

142020234 | FUBAR SEERSUCKER PANT | D1 - EARLIEST DELIVERY: JANUARY 15TH



FUBAR PLEATED PANT

- SEERSUCKER FABRICATION
- BUTTON FRONT CLOSURE
- ZIPPER FLY
- SLASH FRONT POCKETS
- PLEATS AT FRONT WAIST.
- WELTS BACK POCKETS
- OBEY EYES LABELING ABOVE RIGHT BACK POCKET

- 65% POLYESTER 35% COTTON
- 13.5 OZ
- IMPORTED

- RELAXED FIT
- 16.75" LEG OPENING
- TAPERED LEG

26 27 28 29 30 31 32 33 34 36 38



HYDRANGEA

BLACK





PIGMENT VINTAGE BLACK

PIGMENT CLASSIC TEE

- PIGMENT GARMENT DYED TEE
- PRINTED GRAPHIC

- 100% COTTON
- 6 OZ

- REGULAR FIT

S M L XL XXL



PIGMENT CORONET
BLUE



PIGMENT VINTAGE WHITE

PIGMENT CLASSIC TEE

- PIGMENT GARMENT DYED TEE
- PRINTED GRAPHIC

- 100% COTTON
- 6 OZ

- REGULAR FIT

S M L XL XXL



PIGMENT VINTAGE
BLACK

163813742 | OBEY HERE LIES THE EARTH | D2 - EARLIEST DELIVERY: FEBRUARY 15



PIGMENT SILVER GREY

PIGMENT CLASSIC TEE

- PIGMENT GARMENT DYED TEE
- PRINTED GRAPHIC

- 100% COTTON
- 6 OZ

- REGULAR FIT

S M L XL XXL



PIGMENT VINTAGE
BLACK

163813743 | OBEY NOW! | D2 - EARLIEST DELIVERY: FEBRUARY 15



PIGMENT SUNFLOWER

PIGMENT CLASSIC TEE

- PIGMENT GARMENT DYED TEE
- PRINTED GRAPHIC

- 100% COTTON
- 6 OZ

- REGULAR FIT

S M L XL XXL

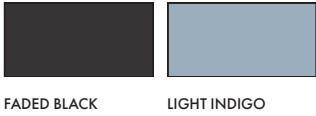


PIGMENT VINTAGE
WHITE



LAUREL WREATH

- BIGWIG DENIM CARPENTER SHORT
- 5 POCKETS STYLING
 - SHANK BUTTON CLOSURE
 - ZIPPER FLY
 - EMBROIDERY AT COIN POCKET
 - OBEY EYES LABELING ON BACK POCKET
 - 100% COTTON
 - 13.5 OZ
 - IMPORTED
 - BAGGY FIT
 - 9.5" INSEAM
- 28 29 30 31 32 33 34 36 38



LIGHT INDIGO

- BIGWIG DENIM CARPENTER SHORT
- 5 POCKETS STYLING
 - SHANK BUTTON CLOSURE
 - ZIPPER FLY
 - CARPENTER POCKETS
 - HAMMER LOOP
 - OBEY EYES LABELING ON BACK POCKET
 - 100% COTTON
 - 13.5 OZ
 - IMPORTED
 - BAGGY FIT
 - 9.5" INSEAM
- 28 29 30 31 32 33 34 36 38



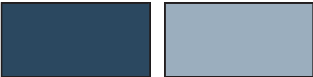
CLAY



BIGWIG BAGGY CORDUROY SHORT

- 5 POCKETS STYLING
- SHANK BUTTON CLOSURE
- ZIPPPER FLY
- CARGO POCKETS
- OBEY EYES LABELING ON BACK POCKET
- 100% COTTON
- 13.5 OZ
- IMPORTED
- BAGGY FIT
- 9.5" INSEAM

26 27 28 29 30 31 32 33 34 36 38



STONEWASH INDIGO LIGHT INDIGO

DIGITAL BLACK



BIGWIG DENIM CARPENTER SHORT

- 5 POCKETS STYLING
- SHANK BUTTON CLOSURE
- ZIPPPER FLY
- CARPENTER POCKETS
- HAMMER LOOP
- OBEY EYES LABELING ON BACK POCKET
- 100% COTTON
- 12.5 OZ
- IMPORTED
- BAGGY FIT
- 9.5" INSEAM

26 27 28 29 30 31 32 33 34 36 38



MOSS GREEN SILVER GREY



RECON ARMY

EASY LINEN SHORT

- LINEN FABRICATION
- ELASTIC WAIST WITH DRAWCORD
- BACK PATCH POCKETS
- OBEY EYES LABELING AT BACK POCKET

- 55% LINEN 45% VISCOSE
- 10.5 OZ
- IMPORTED

- RELAXED FIT
- 8" INSEAM

S M L XL XXL



OATMEAL





JAVA BROWN

SEERSUCKET SHORT SLEEVE SHIRT

- CONVERTIBLE CAMP COLLAR
- DOUBLE CHEST POCKETS
- CENTER FRONT PEARLIZED BUTTON CLOSURE
- STRAIGHT HEM WITH SIDE SEAM VENTS
- OBEY SIDE SEAM FLAG LABEL
- 97% COTTON 3% SPANDEX
- 6.5 OZ
- IMPORTED
- REGULAR FIT

S M L XL XXL



ORCHID PETAL



WHITE



UNBLEACHED
MULTI

DOBBY OXFORD STRIPE SHORT SLEEVE SHIRT

- CONVERTIBLE CAMP COLLAR
- DOUBLE CHEST POCKET
- CENTER FRONT PEARLIZED BUTTON CLOSURE
- STRAIGHT HEM WITH SIDE SEAM VENTS
- OBEY SIDE SEAM FLAG LABEL
- 100% COTTON
- 7 OZ
- IMPORTED
- REGULAR FIT

S M L XL XXL



HYDRANGAEA
MULTI



SILVER GREY

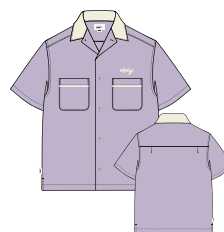
VISCOSE SHORT SLEEVE SHIRT

- CONTRAST CONVERTIBLE CAMP COLLAR
- DOUBLE CHEST POCKETS WITH CONTRAST PIPING
- CENTER FRONT LOGO PEARLIZED BUTTON CLOSURE
- STRAIGHT HEM WITH SIDE SEAM VENTS
- OBEY LOGO CHAINSTITCH EMBROIDERY ABOVE POCKET
- OBEY SIDE SEAM FLAG LABEL

- 100% VISCOSE
- 5 OZ
- IMPORTED

- RELAXED FIT

S M L XL XXL



ORCHID PETAL



PIROUETTE

EMBROIDERED EYELET SHORT SLEEVE SHIRT

- CONVERTIBLE CAMP COLLAR
- SINGLE CHEST POCKET
- CENTER FRONT PEARLIZED BUTTON CLOSURE
- STRAIGHT HEM WITH SIDE SEAM VENTS
- OBEY SIDE SEAM FLAG LABEL

- 100% COTTON
- 7 OZ
- IMPORTED

- REGULAR FIT

S M L XL XXL



WHITE



JAVA BROWN
MULTI

PRINTED POPLIN SHORT SLEEVE SHIRT

- CONVERTIBLE CAMP COLLAR
 - SINGLE CHEST POCKET
 - CENTER FRONT PEARLIZED BUTTON CLOSURE
 - CURVED BOTTOM HEM
 - OBEY SIDE SEAM FLAG LABEL
-
- 100% COTTON
 - 4.5 OZ
 - IMPORTED
-
- REGULAR FIT

S M L XL XXL



GREY
MULTI



NIMBUS CLOUD
MULTI

PRINTED VISCOSE SHORT SLEEVE SHIRT

- CONVERTIBLE CAMP COLLAR
 - SINGLE CHEST POCKET
 - CENTER FRONT PEARLIZED BUTTON CLOSURE
 - STRAIGHT HEM WITH SIDE SEAM VENTS
 - OBEY SIDE SEAM FLAG LABEL
-
- 100% VISCOSE
 - 5 OZ
 - IMPORTED
-
- RELAXED FIT

S M L XL XXL



MOSS GREEN
MULTI



ORCHID PETAL
MULTI

PRINTED VISCOSE SHORT SLEEVE SHIRT

- CONVERTIBLE CAMP COLLAR
- SINGLE CHEST POCKET
- CENTER FRONT PEARLIZED BUTTON CLOSURE
- STRAIGHT HEM WITH SIDE SEAM VENTS
- OBEY SIDE SEAM FLAG LABEL

- 100% VISCOSE
- 5 OZ
- IMPORTED

- RELAXED FIT

S M L XL XXL



OYSTER GREY
MULTI



WHITE MULTI

PRINTED COTTON LINEN SHORT SLEEVE SHIRT

- CONVERTIBLE CAMP COLLAR
- SINGLE CHEST POCKET
- CENTER FRONT PEARLIZED BUTTON CLOSURE
- STRAIGHT HEM WITH SIDE SEAM VENTS
- OBEY SIDE SEAM FLAG LABEL

- 70% COTTON 30% LINEN
- 4 OZ
- IMPORTED

- REGULAR FIT

S M L XL XXL



SHELL PINK
MULTI



GOLDEN BROWN
MULTI

PRINTED VISCOSE SHORT SLEEVE SHIRT

- CONVERTIBLE CAMP COLLAR
- SINGLE CHEST POCKETS
- CENTER FRONT PEARLIZED BUTTON CLOSURE
- STRAIGHT HEM WITH SIDE SEAM VENTS
- OBEY SIDE SEAM FLAG LABEL
- 100% VISCOSE
- 5 OZ
- IMPORTED
- RELAXED FIT

S M L XL XXL



STRONG BLUE
MULTI



BLUSH MULTI

PRINTED VISCOSE SHORT SLEEVE SHIRT

- PRINTED LIGHT COTTON CREPE SHORT SLEEVE SHIRT
- SINGLE CHEST POCKET
- CENTER FRONT PEARLIZED BUTTON CLOSURE
- STRAIGHT HEM WITH SIDE SEAM VENTS
- OBEY SIDE SEAM FLAG LABEL
- 100% COTTON
- 3 OZ
- IMPORTED
- REGULAR FIT

S M L XL XXL



WHITE MULTI



ORCHID PETAL
MULTI

YARN DYE STRIPED SHORT SLEEVE TEE

- MULTI COLOR STRIPE JERSEY
- RIB NECKBAND
- OBEY LOWERCASE EMBROIDERY AT CHEST
- 100% COTTON
- 7 OZ
- IMPORTED
- REGULAR FIT

S M L XL XXL



IRISH CREAM
MULTI



WHITE CAP
MULTI

JACQUARD POLO SHORT SLEEVE

- RIBBED COLLAR
- PEARLIZED LOGO BUTTON PLACKET OPENING
- OBEY LOWERCASE BLACK LABEL AT CHEST
- 100% COTTON
- 8.5 OZ
- IMPORTED
- REGULAR FIT

S M L XL XXL



CLEAR SKY
MULTI



UNBLEACHED

- SHORT SLEEVE BUTTON FRONT KNIT SHIRT
- TERRY CLOTH FABRICATION
 - LEFT CHEST POCKET
 - PEARLIZED LOGO BUTTON FULL PLACKET OPENING
 - OBEY EMBROIDERY AT POCKET

- 80% COTTON 20% POLYESTER
- 9.5 OZ
- IMPORTED

- REGULAR FIT

S M L XL XXL



LIGHT KHAKI



AVENTURINE GREEN

TEE SHORT SLEEVE

- ATHLETIC MESH TEE
- RIB NECKBAND
- OBEY LOWERCASE EMBROIDERY AT HEM LEFT CORNER

- 100% POLYESTER
- 8 OZ
- IMPORTED

- BAGGY FIT

S M L XL XXL



HYDRANGEA



CLAY



WHITE

RIBBED KNIT TANK TOP

- OBEY EMBROIDERY ON CHEST
- 95% COTTON 5% SPANDEX
- 9.5 OZ
- IMPORTED
- REGULAR FIT

S M L XL XXL



BLACK



172120078 | EASY RELAXED TWILL SHORT | D2 - EARLIEST DELIVERY: FEBRUARY 15



SURF SPRAY

- EASY TWILL SHORT
- TWILL FABRICATION
 - ELASTIC WAIST WITH DRAWCORD
 - BACK WELT POCKETS
 - OBEY EYES LABELING AT BOTTOM FRONT LEG
- 100% COTTON
 - 10.5 OZ
 - IMPORTED
- RELAXED FIT
 - 8.75" INSEAM
- S M L XL XXL

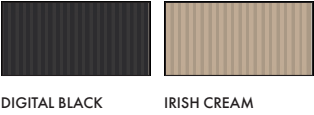


172120080 | EASY RELAXED CORDUROY SHORT | D2 - EARLIEST DELIVERY: FEBRUARY 15



ORCHID PETAL

- EASY CORDUROY SHORT
- CORDUROY FABRICATION
 - ELASTIC WAIST WITH DRAWCORD
 - BACK PATCH POCKETS
 - OBEY EYES LABELING AT BACK POCKET
- 100% COTTON
 - 10.5 OZ
 - IMPORTED
- RELAXED FIT
 - 8.75" INSEAM
 -
- S M L XL XXL



172120077 | EASY RIPSTOP CARGO SHORT | D2 - EARLIEST DELIVERY: FEBRUARY 15



BLACK

EASY RIPSTOP SHORT

- RIPSTOP FABRICATION
- ELASTIC WAIST WITH DRAWCORD
- FAUX FLY
- CARGO POCKETS
- BACK WELT POCKETS
- OBEY EYES LABELING AT CARGO POCKET

- 100% COTTON
- 7 OZ
- IMPORTED

- RELAXED FIT
- 8.75" INSEAM

S M L XL XXL



FIELD GREEN

172120079 | EASY DENIM CARPENTER SHORT | D2 - EARLIEST DELIVERY: FEBRUARY 15



STONEWASH

EASY DENIM SHORT

- ELASTIC WAIST WITH DRAWCORD
- FAUX FLY
- SIDE SEAM FRONT POCKETS
- BACK PATCH POCKETS
- CARPENTER POCKETS
- HAMMER LOOP
- OBEY EYES LABELING AT BACK POCKET

- 100% COTTON
- 12.5 OZ
- IMPORTED

- RELAXED FIT
- 8.75" INSEAM

S M L XL XXL



LIGHT INDIGO



SILVER GREY

172120100 | EASY EYES NYLON SHORT | D2 - EARLIEST DELIVERY: FEBRUARY 15



BITTERSWEET RED

- EASY NYLON SHORT
- NYLON FABRICATION
 - ELASTIC WAIST WITH DRAWCORD
 - BACK WELT POCKET
 - OBEY EYES LABELING AT BOTTOM FRONT LEG
- 100% NYLON
 - 4 OZ
 - IMPORTED
- RELAXED FIT
 - 6.25" INSEAM

S M L XL XXL



BLACK JAVA BROWN SURF BLUE



SURF SPRAY

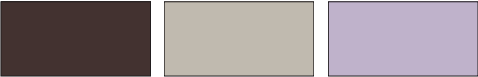
172120114 | EASY PIGMENT TRAIL SHORT | D2 - EARLIEST DELIVERY: FEBRUARY 15



PIGMENT ANTHRACITE

- EASY SHORT
- LIGHT WEIGHT PIGMENT TWILL FABRICATION
 - ELASTIC WAIST
 - WEBBING BELT WITH BUCKLE CLOSURE
 - BACK PATCH POCKETS
 - OBEY EYES LABELING AT BOTTOM FRONT LEG
- 100% COTTON
 - 5.5 OZ
 - IMPORTED
- RELAXED FIT
 - 7" INSEAM

S M L XL XXL

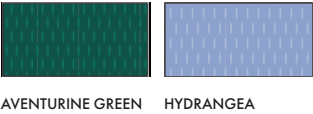


PIGMENT JAVA BROWN PIGMENT SILVER GREY PIGMENT ORCHID PETAL

CLAY



- EASY MESH SHORT
- ATHLETIC MESH FABRICATION
 - ELASTIC WAIST WITH INNER ROUNDED DRAWCORD
 - SIDE SEAM FRONT POCKETS
 - WELT BACK POCKET
 - MESH POCKET BAGS
 - OBEY EMBROIDERY AT FRONT LEG
- 100% POLYESTER
 - 8.5 OZ
 - IMPORTED
- RELAXED FIT
 - 7.5" INSEAM
- S M L XL XXL



RECON ARMY



- UTILITY SHORT
- TWILL FABRICATION
 - BUTTON CLOSURE
 - ZIPPER FLY
 - PATCH FRONT POCKETS
 - BACK PATCH POCKETS
 - FLAT DRAWCORD AT INNER WAIST
 - OBEY EYES LABELING ABOVE BACK POCKET
- 100% COTTON
 - 10.5 OZ
 - IMPORTED
- RELAXED FIT
 - 7.5" INSEAM
- 28 29 30 31 32 33 34 36 38



172100087 | BIG TIMER CARPENTER SHORT | D2 - EARLIEST DELIVERY: FEBRUARY 15



BLACK

BIG TIMER CARPENTER SHORT

- TWILL FABRICATION
 - 5 POCKETS STYLING
 - SHANK BUTTON CLOSURE
 - ZIPPER FLY
 - CARPENTER POCKETS
 - HAMMER LOOP
 - OBEY EYES LABELING ON BACK POCKET
-
- 100% COTTON
 - 10.5 OZ
 - IMPORTED
-
- RELAXED FIT
 - 7.75" INSEAM

26 27 28 29 30 31 32 33 34 36 38



JAVA BROWN

SURF SPRAY

172100088 | CLASSIC CARGO SHORT | D2 - EARLIEST DELIVERY: FEBRUARY 15



SILVER GREY

CLASSIC CARGO SHORT

- RIPSTOP FABRICATION
 - BUTTON FRONT CLOSURE
 - ZIPPER FLY
 - SLASH FRONT POCKETS
 - BACK FLAP POCKETS
 - CARGO POCKETS
 - SIDE WAIST ADJUSTER TAB
 - OBEY EYES LABELING AT CARGO POCKET
-
- 100% COTTON
 - 10.5 OZ
 - IMPORTED
-
- RELAXED FIT
 - 8.5" INSEAM

26 27 28 29 30 31 32 33 34 36 38



BLACK

LIGHT ARMY



100580302 | BOLD TWILL 6 PANEL STRAPBACK | D1& 2



HYDRANGEA

LOW PROFILE TWILL 6 PANEL STRAPBACK HAT

- UNSTRUCTURED
- STRAPBACK CLOSURE
- EMBROIDERED OBEY LOGO

- 100% COTTON
- IMPORTED

O/S



BLACK

TEAL

UNBLEACHED

100580364 | LOWERCASE NYLON 6 PANEL STRAPBACK | D1& 2



BLACK

LOW PROFILE TWILL 6 PANEL STRAPBACK HAT

- UNSTRUCTURED
- STRAPBACK CLOSURE
- EMBROIDERED OBEY LOGO

- 100% NYLON
- IMPORTED

O/S



MOSS GREEN

CLEAR SKY

100490108 | OBEY LOWERCASE 5 PANEL SNAPBACK | D1 & 2



DARK CEDAR

MID PROFILE TWILL 5 PANEL STRAPBACK HAT

- UNSTRUCTURED
- STRAPBACK CLOSURE
- EMBROIDERED OBEY LOGO

- 100% COTTON
- IMPORTED

O/S



BLACK

CLEAR SKY

UNBLEACHED

100490113 | OBEY CASE 5 PANEL SNAPBACK | D1 & 2



JAVA BROWN
MULTI

MID PROFILE TWILL 2 TONE 5 PANEL STRAPBACK HAT

- UNSTRUCTURED
- STRAPBACK CLOSURE
- EMBROIDERED OBEY LOGO

- 100% COTTON
- IMPORTED

O/S



BLACK MULTI

CEDAR GREEN
MULTI

100580375 | OBEY LOWERCASE 6 PANEL CLASSIC SNAPBACK | D1 & 2



DARK
CHOCOLATE

HIGH PROFILE ACRYLIC WOOL SURGE 6 PANEL STRAPBACK HAT

- UNSTRUCTURED
- STRAPBACK CLOSURE
- EMBROIDERED OBEY LOGO
- 80% ACRYLIC 20% WOOL
- IMPORTED

O/S



BLACK

PINE NEEDLE

100580372 | OBEY 2 TONE LOWERCASE 6 PANEL CLASSIC SNAPBACK | D1 & 2



LIGHT SKY MULTI

HIGH PROFILE ACRYLIC WOOL SURGE 6 PANEL STRAPBACK HAT

- UNSTRUCTURED
- STRAPBACK CLOSURE
- EMBROIDERED OBEY LOGO
- 80% ACRYLIC 20% WOOL
- IMPORTED

O/S



BLACK MULTI

WHITE MULTI

100580368 | PIGMENT STUDIO 6 PANEL SNAPBACK | D1& 2



PIGMENT BLACK

LOW PROFILE PIGMENT TWILL 6 PANEL SNAPBACK HAT

- UNSTRUCTURED
- PIGMENT TWILL
- SNAPBACK CLOSURE
- EMBROIDERED OBEY ART

- 100% COTTON
- IMPORTED

O/S



PIGMENT NAVY

100580366 | PIGMENT FRUITS 6 PANEL SNAPBACK | D1& 2



PIGMENT SEA
SPRAY MULTI

LOW PROFILE PIGMENT TWILL 6 PANEL SNAPBACK HAT

- UNSTRUCTURED
- PIGMENT TWILL
- SNAPBACK CLOSURE
- EMBROIDERED OBEY ART

- 100% COTTON
- IMPORTED

O/S



PIGMENT BLACK
MULTI

100140441 | OBEY STUDIOS STRAPBACK HAT | D1& 2



BLACK

HIGH PROFILE ACRYLIC WOOL SURGE 6 PANEL STRAPBACK HAT

- UNSTRUCTURED
- STRAPBACK CLOSURE
- EMBROIDERED OBEY LOGO

- 100% COTTON
- IMPORTED

O/S



UNBLEACHED

100580363 | POSI DIVISION 6 PANEL STRAPBACK | D1& 2



MOSS GREEN

LOW PROFILE NYLON 6 PANEL SNAPBACK HAT

- UNSTRUCTURED
- SNAPBACK WEB CLOSURE
- EMBROIDERED OBEY ART

- 100% NYLON
- IMPORTED

O/S



BLACK

100490120 | OBEY ABUNDANCE 5 PANEL SNAPBACK | D1 & 2



BLACK

MID PROFILE TWILL 5 PANEL SNAPBACK HAT

- UNSTRUCTURED
- SNAPBACK CLOSURE
- EMBROIDERED OBEY ART

- 100% COTTON
- IMPORTED

O/S



JAVA BROWN

100490127 | PEACE PROGRAM 5 PANEL SNAPBACK | D1 & 2



UNBLEACHED

MID PROFILE TWILL 5 PANEL SNAPBACK HAT

- UNSTRUCTURED
- SNAPBACK CLOSURE
- EMBROIDERED OBEY ART

- 100% COTTON
- IMPORTED

O/S



BLACK

100490121 | OBEY EXCELLENCE 5 PANEL SNAPBACK | D1& 2



DARK CEDAR

MID PROFILE TWILL 5 PANEL SNAPBACK HAT

- UNSTRUCTURED
- SNAPBACK CLOSURE
- EMBROIDERED OBEY ART
- 100% COTTON
- IMPORTED

O/S



BLACK

100490122 | OBEY OFFLINE 5 PANEL SNAPBACK | D1& 2



BLACK

MID PROFILE POLYESTER 5 PANEL SNAPBACK HAT

- UNSTRUCTURED
- SNAPBACK CLOSURE
- EMBROIDERED OBEY ART
- 100% NYLON
- IMPORTED

O/S



PALM LEAF

100500040 | OBEY PAGE TRUCKER | D1 & 2



ORCHID PETAL

MID PROFILE TWILL 5 PANEL TRUCKER HAT

- UNSTRUCTURED
- POLY FOAM FRONT PANEL & BRIM
- MESH BACK PANELS
- SNAPBACK CLOSURE
- EMBROIDERED OBEY LOGO
- 100% POLYESTER
- IMPORTED

O/S



BLACK

SILVER GREY

100500045 | OBEY DIRECT TRUCKER | D1 & 2



BLACK

MID PROFILE 5 PANEL TRUCKER HAT

- UNSTRUCTURED
- POLY FOAM FRONT PANEL & BRIM
- MESH BACK PANELS
- SNAPBACK CLOSURE
- EMBROIDERED OBEY ART
- 100% POLYESTER
- IMPORTED

O/S



SURF BLUE

100500046 | OBEY LIFE TRUCKER | D1 & 2



CLEAR SKY

- MID PROFILE 5 PANEL TRUCKER HAT
- UNSTRUCTURED
 - POLY FOAM FRONT PANEL & BRIM
 - MESH BACK PANELS
 - SNAPBACK CLOSURE
 - EMBROIDERED OBEY ART
- 100% POLYESTER
 - IMPORTED

O/S



BLACK

100520055 | BOLD TWILL BUCKET HAT | D1 & 2



HYDRANGEA

- MID DEPTH TWILL BUCKET HAT
- UNSTRUCTURED
 - TWILL
 - EMBROIDERED OBEY ART
- 100% COTTON
 - IMPORTED

O/S



BLACK JAVA BROWN UNBLEACHED

100140443 | GARDEN BUCKET HAT | D1 & 2



GREEN MULTI

MID DEPTH TWILL BUCKET HAT

- UNSTRUCTURED
- TWILL
- EMBROIDERED OBEY ART

- 100% COTTON
- IMPORTED

O/S

100520090 | NOVIO NYLON BUCKET HAT | D1 & 2



BLACK

MID CROWN NYLON BELL BUCKET HAT

- UNSTRUCTURED
- NYLON
- EMBROIDERED OBEY LOGO

- 100% NYLON
- IMPORTED

O/S



SURF SPRAY

100520091 | VICEROY CROCHET BUCKET HAT | D1 & 2



UNBLEACHED
MULTI

MID CROWN NYLON BELL BUCKET HAT

- UNSTRUCTURED
- NYLON
- EMBROIDERED OBEY LOGO

- 100% COTTON
- IMPORTED

O/S



BLACK MULTI

100520088 | VACANCES BUCKET HAT | D1 & 2



ORCHID PETAL

MID CROWN EYELET BUCKET HAT WITH STRAP

- UNSTRUCTURED
- EYELET FABRIC
- ADJUSTABLE CHIN STRAP WITH METAL CORD STOPPER

- 100% COTTON
- IMPORTED

O/S



UNBLEACHED

100030132 | ICON EYES BEANIE | D1& 2



RUBBER

CLASSIC FIT RIB KNIT BEANIE

- OBEY EYES LABEL ON CUFF
- 100% ACRYIC
- IMPORTED

O/S



BLACK

UNBLEACHED

100030125 | MICRO BEANIE | D1& 2



UNBLEACHED

SHALLOW FIT RIB KNIT BEANIE

- OBEY ENAMEL PIN ON CUFF
- 100% ACRYIC
- IMPORTED

O/S



BLACK

HYDRANGEA

PEACH PARFAIT



SURF BLUE

RIB KNIT SKULLCAP BEANIE

- EMBROIDERED OBEY LOGO
- 100% ACRYIC
- IMPORTED

O/S



BLACK



SURF SPRAY



100010153 | OBEY WASTED HIP BAG II | D1 & 2



PIGMENT BLACK



PIGMENT TWILL HIP BAG

- PIGMENT TWILL
- EMBROIDERED OBEY PATCH
- 1" WEB STRAP
- PLASTIC SIDE RELEASE BUCKLE
- METAL ZIPPER
- 100% COTTON
- IMPORTED

O/S



PIGMENT
HYDRANGEA

100010126 | COMMUTER WAIST BAG | D1 & 2



TAN MULTI



RIPSTOP POLYESTER TECHNICAL WAIST BAG

- RIPSTOP POLYESTER
- PVC OBEY PATCH
- 1.5" WEB STRAP
- PLASTIC SIDE RELEASE BUCKLE
- METAL ZIPPER
- REFLECTIVE ZIPPER PULL
- SMALL INTERIOR ZIP POCKET

- 100% POLYESTER
- IMPORTED

O/S



BLACK

100010150 | OBEY SMALL MESSENGER BAG | D1 & 2



BLACK

POLYESTER CANVAS SHOULDER BAG

- POLYESTER CANVAS
- PVC OBEY PATCH
- 1.25" WEB STRAP
- PLASTIC SIDE RELEASE BUCKLE
- METAL ZIPPER
- REFLECTIVE ZIPPER PULL
- SMALL INTERIOR ZIP POCKET

- 100% POLYESTER
- IMPORTED

O/S



CARAMEL BROWN

100010152 | PIGMENT DYED TOTE BAG | D1 & 2



PIGMENT
HYDRANGEA

PIGMENT DYED CANVAS TOTE BAG

- PIGMENT HEAVYWEIGHT CANVAS
- PRINTED OBEY LOGO
- INTERIOR ZIP POCKET
- 1.375" WEBBING STRAPS
- 25" W X 16.25" H X 7.75" D

- 100% COTTON
- IMPORTED

O/S



PIGMENT BLACK

100010151 | MULTI CANS TOTE BAG | D1 & 2



WHITE MULTI

PRINTED HEAVYWEIGHT CANVAS TOTE BAG

- OBEY ALL OVER PRINT
- HEAVYWEIGHT CANVAS
- INTERIOR ZIP POCKET
- 1.375" WEBBING STRAPS
- 25" W X 16.25" H X 7.75" D
- 100% COTTON
- IMPORTED

O/S

JUMBO TOTE BAG

RELAXED FIT

PRINTED GRAPHIC ON FRONT

100% COTTON
6 OZ

UNISEX

OS

100553703 | OBEY PEACEFUL PROTEST | D1 & 2

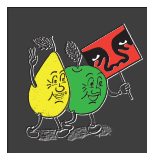


NATURAL

JUMBO TOTE BAG

- PRINTED GRAPHIC
- 100% COTTON
- IMPORTED

O/S



BLACK



100260093 | COOPER II SOCKS | D1& 2



WHITE / BLACK

MID LENGTH RIB CREW SOCKS WITH STRIPED INTARSIA OBEY ART

- OBEY STRIPE ABOVE ANKLE
- 85% COTTON 13% NYLON 2% SPANDEX
- IMPORTED

O/S



WHITE /
SURF BLUE



WHITE / SURF
SPRAY



WHITE / ORCHID
PETAL

100260141 | OBEY EYES ICON SOCKS | D1& 2



DEWBERRY

MID LENGTH RIB CREW SOCKS WITH JACQUARD OBEY ART

- JACQUARD OBEY EYES ICON ART ABOVE ANKLE
- 85% COTTON 13% NYLON 2% SPANDEX
- IMPORTED

O/S



BLACK



CLEAR SKY



WHITE

100260144 | OBEY BOLD SOCKS | D1 & 2



SURF SPRAY

- MID LENGTH RIB CREW SOCKS WITH EMBROIDERED OBEY LOGO
- EMBROIDERED OBEY LOGO
 - 85% COTTON 13% NYLON 2% SPANDEX
 - IMPORTED
- O/S



BLACK UNBLEACHED WHITE

100260180 | LA RUE SOCKS | D1 & 2



JAVA BROWN
MULTI

- MID LENGTH RIB CREW SOCKS WITH JACQUARD PATTERN
- JACQUARD FLORAL PATTERN
 - 85% COTTON 13% NYLON 2% SPANDEX
 - IMPORTED
- O/S



GREY MULTI

100260181 | OBEY SUNSHINE SOCKS | D1 & 2



UNBLEACHED

MID LENGTH RIB CREW SOCKS WITH JACQUARD OBEY ART

- JACQUARD OBEY ART ABOVE ANKLE
- 85% COTTON 13% NYLON 2% SPANDEX
- IMPORTED

O/S



SURF SPRAY

100260182 | OBEY OFFLINE SOCKS | D1 & 2



PALM LEAF

MID LENGTH RIB CREW SOCKS WITH JACQUARD OBEY ART

- JACQUARD OBEY ART AT SIDE OF ANKLE
- 85% COTTON 13% NYLON 2% SPANDEX
- IMPORTED

O/S



WHITE



100050026 | BIG BOY BELT | D1 & 2



BLACK

WEB BELT WITH METAL SLIDER BUCKLE

- 1.25" WIDTH WEBBING
- METAL SLIDER BUCKLE AND TOP
- OBEY EYES LABEL
- 60% COTTON 40% POLYESTER
- IMPORTED

O/S



JAVA BROWN

HYDRANGEA

UNBLEACHED

100050036 | OBEY SNAKE DRESS BELT | D1 & 2



TAN

FAUX SNAKE SKIN PU BELT WITH METAL BUCKLE AND TIP

- FAUX SNAKE SKIN
- 1.25" WIDTH PU
- OBEY ENGRAVED BELT LOOK
- METAL BUCKLE AND TIP
- 100% POLYURETHANE
- IMPORTED

S/ M - 41" TOTAL LENGTH INCLUDING BUCKLE
L/ XL - 45" TOTAL LENGTH INCLUDING BUCKLE



BLACK

100680012 | FRUITS AIR FRESHENER | D1 & 2



WHITE MULTI

PRINTED AIR FRESHNER WITH ELASTIC STRING

- PINE SCENT
- PRINTED OBEY ART
- 100% PAPER
- IMPORTED

O/S

100680013 | PEACE DOG AIR FRESHENER | D1 & 2



WHITE MULTI

PRINTED AIR FRESHNER WITH ELASTIC STRING

- PINE SCENT
- PRINTED OBEY ART
- 100% PAPER
- IMPORTED

O/S

100660003 | BOLD FRAME KEY CHAIN | **D1 & 2**



WHITE MULTI

RUBBER KEYCHAIN

- METAL KEYRING
- PRINTED OBEY ART
- 100% RUBBER
- IMPORTED

O/S

100160021 | OBEY ICON METAL KEYCHAIN | **D1 & 2**



WHITE

METAL OBEY ICON KEYCHAIN

- METAL KEYRING
- EMBOSSED WITH OBEY ICON PRINT
- 100% METAL
- IMPORTED

O/S



CLEAR

16OZ GLASS MUG WITH OBEY ICON PRINT

- PRINTED OBEY ICON
- 100% GLASS
- IMPORTED

O/S

100270012 | STICKER PACK 5 | D1 & 2



ASSORTED

OBEY STICKER PACK

- ASSORTED STICKERS FOR THE OBEY FIENDS

O/S

100270001 | OBEY STICKER 2 | D1 & 2



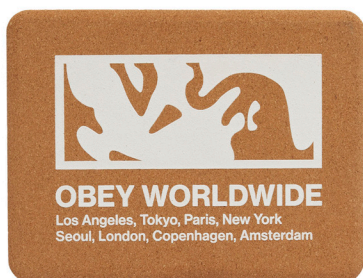
ASSORTED

OBEDIENT STICKER PACK

- ASSORTED STICKERS FOR THE OBEY FIENDS

O/S

326003236 | OBEY WORLDWIDE ICON | **D1 & 2**



OBEY P.O.P

- CORK BLOCK WITH BOLD OBEY PRINT
- 100% CORK
- IMPORTED

O/S

CORK

326003531 | OBEY LOWERCASE ICON | **D1 & 2**



OBEY P.O.P

- CORK BLOCK WITH BOLD OBEY PRINT
- 100% CORK
- IMPORTED

O/S

CORK



ASSORTED

OBEY FRAMED P.O.P

- FRAMED PRINT

O/S

ESTABLISHED WORKS COLLECTION

OBEY ESTABLISHED WORKS WAS DESIGNED WITH A STRONG FOCUS ON QUALITY PRODUCT THAT STANDS THE TEST OF TIME. THESE ARE MINIMALLY BRANDED, LONG RUNNING, WARDROBE STAPLES OFFERED AS UNISEX STYLES IN BOTH CLASSIC & SEASONAL COLORS.



112460010 | ESTABLISHED WORKS BOLD ZIP HOOD | D1 - EARLIEST DELIVERY: JANUARY 15



BLACK

HEAVYWEIGHT ZIP HOODED SWEATSHIRT

- ROUND DRAWCORD AT HOOD
- RIB KNIT CUFFS AND HEM
- FRONT METAL ZIPPER WITH LOGO PULL
- FRONT POCKET
- OBEY BOLD FONT EMBROIDERY ON CHEST
- 70% RECYCLED COTTON 30% RECYCLED POLYESTER
- 14 OZ
- IMPORTED
- REGULAR FIT

S M L XL XXL



ASH GREY

112470169 | ESTABLISHED WORKS BOLD HOOD | D1 - EARLIEST DELIVERY: JANUARY 15



ASH GREY

HEAVYWEIGHT HOODED SWEATSHIRT

- BRUSHED BACK FLEECE
- ROUND DRAWCORD AT HOOD
- RIB KNIT CUFFS AND HEM
- FRONT POCKET
- OBEY BOLD FONT EMBROIDERY ON CHEST
- 70% RECYCLED COTTON 30% RECYCLED POLYESTER
- 14 OZ
- IMPORTED
- REGULAR FIT

S M L XL XXL



BLACK



BLACK

HEAVYWEIGHT ZIP HOODED SWEATSHIRT

- BRUSHED BACK FLEECE
- RIB KNIT NECKBAND, CUFFS AND HEM
- OBEY BOLD FONT EMBROIDERY AT CHEST
- 70% RECYCLED COTTON 30% RECYCLED POLYESTER
- 14 OZ
- IMPORTED
- REGULAR FIT

S M L XL XXL



ASH GREY



ASH GREY

HEAVYWEIGHT FLEECE SWEATPANT

- BRUSHED BACK FLEECE
- ELASTIC WAISTBAND AND HEMS
- SINGLE WEARER'S RIGHT POCKET
- INNER WAIST ROUNDED DRAWCORD
- OBEY BOLD EMBROIDERY ON LEFT LEG
- 70% RECYCLED COTTON 30% RECYCLED POLYESTER
- 14 OZ
- IMPORTED
- REGULAR FIT

S M L XL XXL



BLACK



CLAY MULTI

YARN DYE JERSEY STRIPED LONG SLEEVE TEE

- RIB NECKBAND AND CUFFS
- OBEY ICON EYES LABEL AT CHEST

- 100% COTTON
- 9.5 OZ
- IMPORTED

- REGULAR FIT

S M L XL XXL



BLACK MULTI



BLACK MULTI

YARN DYE JERSEY STRIPED SHORT SLEEVE TEE

- RIB NECKBAND AND CUFFS
- OBEY ICON EYES LABEL AT CHEST

- 100% COTTON
- 9.5 OZ
- IMPORTED

- REGULAR FIT

S M L XL XXL



CLAY MULTI



BLACK

- JERSEY POCKET TEE SHORT SLEEVE
- LEFT FRONT CHEST POCKET
 - RIB NECKBAND
 - OBEY ICON EYES LABEL AT POCKET
 - 100% COTTON
 - 7.5 OZ
 - IMPORTED
 - REGULAR FIT
- S M L XL XXL



WHITE



WHITE

- TEE LONG SLEEVE
- COMPACT JERSEY
 - RIB NECKBAND AND CUFFS
 - OBEY BOLD EMBROIDERY ON CHEST
 - 100% ORGANIC COTTON
 - 7.5 OZ
 - IMPORTED
 - REGULAR FIT
- S M L XL XXL



BLACK

131080330 | ESTABLISHED WORKS BOLD TEE SS | D1 - EARLIEST DELIVERY: JANUARY 15



BLACK

- JERSERY SHORT SLEEVE TEE
- RIB NECKBAND
 - OBEY BOLD EMBROIDERY AT CHEST
 - 100% ORGANIC COTTON
 - 9 OZ
 - IMPORTED
 - REGULAR FIT
- S M L XL XXL



WHITE

131080300 | STANDARD TEE S/S 2 PACKS | D1 - EARLIEST DELIVERY: JANUARY 15



ASH GREY

- JERSERY SHORT SLEEVE TEE
- RIB NECKBAND
 - OBEY BOLD EMBROIDERY AT CHEST
 - 100% COTTON
 - 7.5 OZ
 - IMPORTED
 - REGULAR FIT
- S M L XL XXL



BLACK



WHITE



BLACK

JERSEY 2 PACKS BOXER BRIEFS

- FLAT COVERSTITCH AT SEAMS FOR COMFORT
- OBEY LOGO ELASTIC
- PACKAGED IN A SUSTAINABLE BOX
- 95% ORGANIC COTTON 5% ELASTANE.
- 6OZ.
- IMPORTED
- RELAXED FIT

S M L XL XXL



ASH GREY



WHITE

100580256 | BOLD ORGANIC 6 PANEL STRAPBACK | D1 - EARLIEST DELIVERY: JANUARY 15



ACADEMY NAVY

LOW PROFILE ORGANIC TWILL 6 PANEL STRAPBACK HAT

- UNSTRUCTURED
- STRAPBACK CLOSURE
- OBEY LOGO LABEL
- 100% ORGANIC COTTON
- IMPORTED

O/S



BLACK

UNBLEACHED

100490095 | BOLD LABEL ORGANIC STRAPBACK II | D1 - EARLIEST DELIVERY: JANUARY 15



BLACK

MID PROFILE ORGANIC TWILL 5 PANEL STRAPBACK HAT

- UNSTRUCTURED
- STRAPBACK CLOSURE
- OBEY LOGO LABEL
- 100% ORGANIC COTTON
- IMPORTED

O/S



IRISH CREAM

UNBLEACHED

100490077 | BOLD LABEL ORGANIC 5 PANEL HAT | D1 - EARLIEST DELIVERY: JANUARY 15



AVENTURINE
GREEN

LOW PROFILE ORGANIC TWILL 5 PANEL STRAPBACK HAT

- UNSTRUCTURED
- WEB STRAPBACK CLOSURE
- OBEY LOGO LABEL
- 100% ORGANIC COTTON
- IMPORTED

O/S



BLACK

ACADEMY NAVY

100580255 | BLOCK 6 PANEL STRAPBACK | D1 - EARLIEST DELIVERY: JANUARY 15



BLACK

LOW PROFILE ORGANIC TWILL 5 PANEL STRAPBACK HAT

- UNSTRUCTURED
- STRAPBACK CLOSURE
- "O" FLET PATCH
- 100% ORGANIC COTTON
- IMPORTED

O/S



IRISH CREAM

UNBLEACHED



PEACH PARFAIT

MID DEPTH FIT ORGANIC RIB KNIT BEANIE

- OBEY FLAG LABEL ON CUFF
- 100% ORGANIC COTTON
- IMPORTED

O/S



BLACK



CLEAR SKY



UNBLEACHED



ASH GREY

HEAVYWEIGHT ZIP HOODED SWEATSHIRT

- ROUND DRAWCORD AT HOOD
- RIB KNIT CUFFS AND HEM
- FRONT METAL ZIPPER WITH LOGO PULL
- FRONT POCKET
- OBEY ICON EYES LABEL ON CHEST

- 60% COTTON 40% POLYESTER
- 14 OZ
- IMPORTED

- REGULAR FIT

S M L XL XXL



BLACK

HYDRANGEA



HYDRANGEA

HEAVYWEIGHT HOODED SWEATSHIRT

- BRUSHED BACK FLEECE
- ROUND DRAWCORD AT HOOD
- RIB KNIT CUFFS AND HEM
- FRONT POCKET
- OBEY ICON EYES LABEL ON CHEST

- 60% COTTON 40% POLYESTER
- 14 OZ
- IMPORTED

- REGULAR FIT

S M L XL XXL



BLACK

ASH GREY



BLACK

HEAVYWEIGHT CREW SWEATSHIRT

- BRUSHED BACK FLEECE
- RIB KNIT NECKBAND, CUFFS AND HEM
- OBEY ICON EYES LABEL ON CHEST
- 60% COTTON 40% POLYESTER
- 14 OZ
- IMPORTED
- REGULAR FIT

S M L XL XXL



HYDRANGEA



ASH GREY



ASH GREY

HEAVYWEIGHT FLEECE SWEATPANT

- BRUSHED BACK FLEECE
- ELASTIC WAISTBAND AND HEMS
- SINGLE WEARER'S RIGHT POCKET
- INNER WAIST ROUNDED DRAWCORD
- OBEY ICON EYES LABEL AT BACK POCKET
- 60% COTTON 40% POLYESTER
- 14 OZ
- IMPORTED
- REGULAR FIT

S M L XL XXL



BLACK



HYDRANGEA



HYDRANGEA

HEAVYWEIGHT FLEECE SWEATSHORT

- BRUSHED BACK FLEECE
- ELASTIC WAISTBAND
- SINGLE WEARER'S RIGHT BACK POCKET
- INNER WAIST ROUNDED DRAWCORD
- OBEY ICON EYES LABEL BACK POCKET
- 60% COTTON 40% POLYESTER
- 14 OZ
- IMPORTED
- REGULAR FIT

S M L XL XXL



BLACK



ASH GREY

100580315 | ICON EYES 6 PANEL HAT II | D1 - EARLIEST DELIVERY: JANUARY 15



BLACK

LOW PROFILE ORGANIC TWILL 6 PANEL STRAPBACK HAT

- UNSTRUCTURED
- STRAPBACK CLOSURE
- OBEY EYES PATCH

- 100% COTTON
- IMPORTED

O/S



ORCID PETAL

UNBLEACHED

100580316 | ICON EYES SNAPBACK II | D1 - EARLIEST DELIVERY: JANUARY 15



DARK CEDAR

MID PROFILE ORGANIC TWILL 5 PANEL STRAPBACK HAT

- UNSTRUCTURED
- STRAPBACK CLOSURE
- OBEY EYES LABEL

- 100% COTTON
- IMPORTED

O/S



BLACK

JAVA BROWN

100490059 | ICON EYES CAMP HAT | D1 - EARLIEST DELIVERY: JANUARY 15



PIROUETTE

LOW PROFILE ORGANIC TWILL 5 PANEL CAMP HAT

- UNSTRUCTURED
- WEB STRAPBACK CLOSURE
- OBEY EYES LABEL

- 100% COTTON
- IMPORTED

O/S



BLACK

UNBLEACHED

100520072 | ICON EYES BUCKET HAT II | D1 - EARLIEST DELIVERY: JANUARY 15



UNBLEACHED

MID DEPTH TWILL BUCKET HAT

- UNSTRUCTURED
- TWILL
- OBEY EYES LABEL

- 100% COTTON
- IMPORTED

O/S



BLACK

PIROUETTE



117462349 | OBEY BOLD | D1 & 2

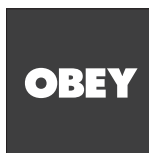


SHELL PINK

PREMIUM FRENCH TERRY HOODED SWEATSHIRT

- PRINTED GRAPHIC ON FRONT AND BACK
- 80% COTTON 20% POLYESTER
- 16 OZ
- RELAXED FIT

XS S M L XL XXL



BLACK



HYDRANGEA



UNBLEACHED

117462142 | OBEY EYES ICON 2 | D1 & 2



DEWBERRY

PREMIUM FRENCH TERRY HOODED SWEATSHIRT

- PRINTED GRAPHIC ON FRONT AND BACK
- 80% COTTON 20% POLYESTER
- 16 OZ
- RELAXED FIT

XS S M L XL XXL



BLACK



HYDRANGEA



PEACH PARFAIT

117472349 | OBEY BOLD | D1 & 2



CORONET BLUE

PREMIUM FRENCH TERRY CREW SWEATSHIRT

- PRINTED GRAPHIC ON FRONT AND BACK
- 80% COTTON 20% POLYESTER
- 16 OZ
- RELAXED FIT

XS S M L XL XXL



BLACK



PEACH PARFAIT

117472142 | OBEY EYES ICON 2 | D1 & 2



DEWBERRY

PREMIUM FRENCH TERRY CREW SWEATSHIRT

- PRINTED GRAPHIC ON FRONT AND BACK
- 80% COTTON 20% POLYESTER
- 16 OZ
- RELAXED FIT

XS S M L XL XXL



BLACK



UNBLEACHED

117482349 | OBEY BOLD | D1 & 2



BLACK

PREMIUM FRENCH TERRY ZIP HOODED SWEATSHIRT

- PRINTED GRAPHIC ON FRONT AND BACK
- 80% COTTON 20% POLYESTER
- 16 OZ
- RELAXED FIT

XS S M L XL XXL



HEATHER GREY

117482142 | OBEY EYES ICON 2 | D1 & 2



DEWBERRY

PREMIUM FRENCH TERRY ZIP HOODED SWEATSHIRT

- PRINTED GRAPHIC ON FRONT AND BACK
- 80% COTTON 20% POLYESTER
- 16 OZ
- RELAXED FIT

XS S M L XL XXL



BLACK

165263411 | OBEY LOWER CASE 2 | D1 & 2



SILT

- CLASSIC TEE
- PRINTED GRAPHIC ON FRONT AND BACK
 - 100% COTTON
 - 6 OZ
 - REGULAR FIT
- S M L XL XXL



BLACK DIGITAL VIOLET WHITE

165263016 | BOLD OBEY 2 | D1 & 2



CITRUS

- CLASSIC TEE
- PRINTED GRAPHIC ON FRONT AND BACK
 - 100% COTTON
 - 6 OZ
 - REGULAR FIT
- S M L XL XXL



BLACK DIGITAL VIOLET WHITE



CUCUMBER

CLASSIC TEE

- PRINTED GRAPHIC ON FRONT AND BACK
- 100% COTTON
- 6 OZ
- REGULAR FIT

S M L XL XXL



BLACK



DIGITAL VIOLET



CREAM

166912888 | OBEY BOLD 3 | D1 & 2



SURF SPRAY

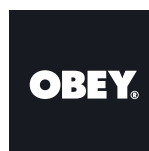
HEAVYWEIGHT BOX TEE

- GARMENT DYED
- PRINTED GRAPHIC ON FRONT AND BACK

- 100% COTTON
- 8 OZ

- RELAXED FIT

S M L XL XXL



JET BLACK



HYDRANGEA



PEACH PARFAIT



SILVER GREY

166912142 | OBEY EYES ICON 2 | D1 & 2



HYDRANGEA

HEAVYWEIGHT BOX TEE

- GARMENT DYED
- PRINTED GRAPHIC ON FRONT AND BACK

- 100% COTTON
- 8 OZ

- RELAXED FIT

S M L XL XXL



JET BLACK



SEPIA



PEACH PARFAIT



SURF SPRAY

167102888 | OBEY BOLD 3 | D1 & 2



PEACH PARFAIT

HEAVYWEIGHT BOX LONG SLEEVE TEE

- GARMENT DYED
- PRINTED GRAPHIC ON FRONT AND BACK

- 100% COTTON
- 8 OZ

- RELAXED FIT

S M L XL XXL



JET BLACK



HYDRANGEA



SURF SPRAY



SILVER GREY

167102142 | OBEY EYES ICON 2 | D1 & 2



HYDRANGEA

HEAVYWEIGHT BOX LONG SLEEVE TEE

- GARMENT DYED
- PRINTED GRAPHIC ON FRONT AND BACK

- 100% COTTON
- 8 OZ

- RELAXED FIT

S M L XL XXL



JET BLACK



SEPIA



SURF SPRAY



PEACH PARFAIT



117463754 | OBEY SOUND & RESISTANCE | D1 - EARLIEST DELIVERY: JANUARY 15TH



SHELL PINK

PREMIUM FRENCH TERRY HOODED SWEATSHIRT

- PRINTED GRAPHIC ON FRONT AND BACK
- 58% COTTON 42% POLYESTER
- 16 OZ
- RELAXED FIT

XS S M L XL XXL



CORONET BLUE

117463705 | OBEY SEEDS GROW | D1 - EARLIEST DELIVERY: JANUARY 15TH

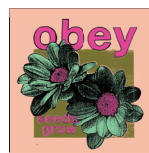


HYDRANGEA

PREMIUM FRENCH TERRY HOODED SWEATSHIRT

- PRINTED GRAPHIC ON FRONT AND BACK
- 58% COTTON 42% POLYESTER
- 16 OZ
- RELAXED FIT

XS S M L XL XXL



PEACH PARFAIT

117463761 | OBEY DISORDER | D1 - EARLIEST DELIVERY: JANUARY 15TH

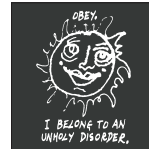


DEWBERRY

PREMIUM FRENCH TERRY HOODED SWEATSHIRT

- PRINTED GRAPHIC ON FRONT AND BACK
- 58% COTTON 42% POLYESTER
- 16 OZ
- RELAXED FIT

XS S M L XL XXL



BLACK

117463738 | OBEY PEACE EYES | D1 - EARLIEST DELIVERY: JANUARY 15TH



JAVA BROWN

PREMIUM FRENCH TERRY HOODED SWEATSHIRT

- PRINTED GRAPHIC ON FRONT AND BACK
- 58% COTTON 42% POLYESTER
- 16 OZ
- RELAXED FIT

XS S M L XL XXL



UNBLEACHED

117473726 | OBEY WE COME FROM THE SUN | D1 - EARLIEST DELIVERY: JANUARY 15TH



DEWBERRY

PREMIUM FRENCH TERRY CREW SWEATSHIRT

- PRINTED GRAPHIC ON FRONT AND BACK
- 58% COTTON 42% POLYESTER
- 16 OZ
- RELAXED FIT

XS S M L XL XXL



UNBLEACHED

117473735 | HAPPY BOOMBOX | D1 - EARLIEST DELIVERY: JANUARY 15TH



PEACH PARFAIT

PREMIUM FRENCH TERRY CREW SWEATSHIRT

- PRINTED GRAPHIC ON FRONT AND BACK
- 58% COTTON 42% POLYESTER
- 16 OZ
- RELAXED FIT

XS S M L XL XXL



CORONET BLUE

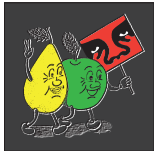
117483703 | OBEY PEACEFUL PROTEST | D1 - EARLIEST DELIVERY: JANUARY 15TH



CORONET BLUE

- PREMIUM FRENCH TERRY HOODED SWEATSHIRT
- PRINTED GRAPHIC ON FRONT AND BACK
 - 58% COTTON 42% POLYESTER
 - 16 OZ
 - RELAXED FIT

XS S M L XL XXL



BLACK

117483721 | OBEY LET YOUR WORRIES FADE AWAY | D1 - EARLIEST DELIVERY: JANUARY 15TH



BLACK

- PREMIUM FRENCH TERRY HOODED SWEATSHIRT
- PRINTED GRAPHIC ON FRONT AND BACK
 - 58% COTTON 42% POLYESTER
 - 16 OZ
 - RELAXED FIT

XS S M L XL XXL



DEWBERRY



165263693 | OBEY ICON SPLIT | D1 - EARLIEST DELIVERY: JANUARY 15TH



BLACK

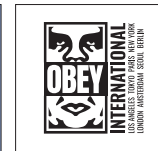
CLASSIC TEE

- PRINTED GRAPHIC ON FRONT AND BACK
- 100% COTTON
- 6 OZ
- REGULAR FIT

S M L XL XXL



DIGITAL VIOLET



WHITE

165263783 | OBEY PLANET | D1 - EARLIEST DELIVERY: JANUARY 15TH



SILT

CLASSIC TEE

- PRINTED GRAPHIC ON FRONT AND BACK
- 100% COTTON
- 6 OZ
- REGULAR FIT

S M L XL XXL



BLACK



WHITE

165263695 | OBEY CITY FLOWERS | D1 - EARLIEST DELIVERY: JANUARY 15TH



CITRUS

CLASSIC TEE

- PRINTED GRAPHIC ON FRONT AND BACK
- 100% COTTON
- 6 OZ
- REGULAR FIT

S M L XL XXL



BLACK



WHITE

165263697 | OBEY VISUAL DESIGN STUDIO | D1 - EARLIEST DELIVERY: JANUARY 15TH



DIGITAL VIOLET

CLASSIC TEE

- PRINTED GRAPHIC ON FRONT AND BACK
- 100% COTTON
- 6 OZ
- REGULAR FIT

S M L XL XXL



BLACK



WHITE

165263696 | OBEY FLORAL GARDEN | D1 - EARLIEST DELIVERY: JANUARY 15TH



BLACK

CLASSIC TEE

- PRINTED GRAPHIC ON FRONT AND BACK
- 100% COTTON
- 6 OZ
- REGULAR FIT

S M L XL XXL



GOOD GREY



WHITE

165263772 | OBEY STUDIOS | D1 - EARLIEST DELIVERY: JANUARY 15TH



WHITE

CLASSIC TEE

- PRINTED GRAPHIC ON FRONT AND BACK
- 100% COTTON
- 6 OZ
- REGULAR FIT

S M L XL XXL



BLACK



CUCUMBER

165263698 | THE FUTURE IS THE FRUITS OF OUR LABOR | D1 - EARLIEST DELIVERY: JANUARY 15TH

CLASSIC TEE

- PRINTED GRAPHIC ON FRONT AND BACK
- 100% COTTON
- 6 OZ
- REGULAR FIT

S M L XL XXL



WHITE



BLACK



CITRUS

165263700 | OBEY BABY ANGEL | D1 - EARLIEST DELIVERY: JANUARY 15TH

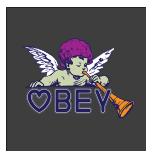
CLASSIC TEE

- PRINTED GRAPHIC ON FRONT AND BACK
- 100% COTTON
- 6 OZ
- REGULAR FIT

S M L XL XXL



SAND



BLACK



WHITE



ADVENTURE GREEN

HEAVYWEIGHT BOX TEE

- GARMENT DYED
 - PRINTED GRAPHIC ON FRONT AND BACK
 - 100% COTTON
 - 8 OZ
 - RELAXED FIT
- S M L XL XXL



JET BLACK HYDRANGEA WHITE



SAGO

HEAVYWEIGHT BOX TEE

- GARMENT DYED
 - PRINTED GRAPHIC ON FRONT AND BACK
 - 100% COTTON
 - 8 OZ
 - RELAXED FIT
- S M L XL XXL



JET BLACK WHITE

166913736 | OBEY RE SOURCE | D1 - EARLIEST DELIVERY: JANUARY 15TH



SILVER GREY

HEAVYWEIGHT BOX TEE

- GARMENT DYED
- PRINTED GRAPHIC ON FRONT AND BACK

- 100% COTTON
- 8 OZ

- RELAXED FIT

S M L XL XXL



JET BLACK



WHITE

166913704 | OBEY PEACE PROGRAM | D1 - EARLIEST DELIVERY: JANUARY 15TH



HYDRANGEA

HEAVYWEIGHT BOX TEE

- GARMENT DYED
- PRINTED GRAPHIC ON FRONT AND BACK

- 100% COTTON
- 8 OZ

- RELAXED FIT

S M L XL XXL



VINTAGE BLACK



PEACH PARFAIT

166913703 | OBEY PEACEFUL PROTEST | D1 - EARLIEST DELIVERY: JANUARY 15TH



DEWBERRY

HEAVYWEIGHT BOX TEE

- GARMENT DYED
- PRINTED GRAPHIC ON FRONT AND BACK

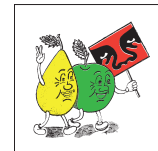
- 100% COTTON
- 8 OZ

- RELAXED FIT

S M L XL XXL



VINTAGE BLACK



WHITE

166913705 | OBEY SEEDS GROW | D1 - EARLIEST DELIVERY: JANUARY 15TH



VINTAGE BLACK

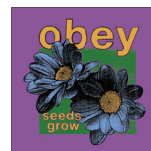
HEAVYWEIGHT BOX TEE

- GARMENT DYED
- PRINTED GRAPHIC ON FRONT AND BACK

- 100% COTTON
- 8 OZ

- RELAXED FIT

S M L XL XXL



DEWBERRY



WHITE

166913706 | OBEY DOVE OF PEACE | D1 - EARLIEST DELIVERY: JANUARY 15TH



WHITE

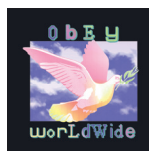
HEAVYWEIGHT BOX TEE

- GARMENT DYED
- PRINTED GRAPHIC ON FRONT AND BACK

- 100% COTTON
- 8 OZ

- RELAXED FIT

S M L XL XXL



JET BLACK



SURF BLUE

166913735 | HAPPY BOOMBOX | D1 - EARLIEST DELIVERY: JANUARY 15TH



WHITE

HEAVYWEIGHT BOX TEE

- GARMENT DYED
- PRINTED GRAPHIC ON FRONT

- 100% COTTON
- 8 OZ

- RELAXED FIT

S M L XL XXL



PEACH PARFAIT

167103701 | OBEY STUDIOS ICON | D1 - EARLIEST DELIVERY: JANUARY 15TH



SILVER GREY

- HEAVYWEIGHT BOX LONG SLEEVE TEE
- GARMENT DYED
 - PRINTED GRAPHIC ON FRONT AND BACK
 - 100% COTTON
 - 8 OZ
 - RELAXED FIT
- S M L XL XXL



JET BLACK



HYDRANGEA



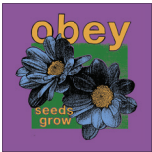
SURF SPRAY

167103705 | OBEY SEEDS GROW | D1 - EARLIEST DELIVERY: JANUARY 15TH

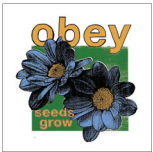


VINTAGE BLACK

- HEAVYWEIGHT BOX LONG SLEEVE TEE
- GARMENT DYED
 - PRINTED GRAPHIC ON FRONT AND BACK
 - 100% COTTON
 - 8 OZ
 - RELAXED FIT
- S M L XL XXL



DEWBERRY



WHITE



PIGMENT HYDRANGEA

PIGMENT CLASSIC TEE

- PIGMENT GARMENT DYED TEE
 - PRINTED GRAPHIC
 - 100% COTTON
 - 6 OZ
 - REGULAR FIT
- S M L XL XXL



PIGMENT PEACH
PARFAIT



PIGMENT SAGO



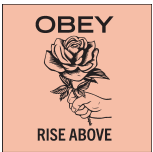
PIGMENT VINTAGE BLACK

PIGMENT CLASSIC TEE

- PIGMENT GARMENT DYED TEE
 - PRINTED GRAPHIC
 - 100% COTTON
 - 6 OZ
 - REGULAR FIT
- S M L XL XXL



PIGMENT
HYDRANGEA



PIGMENT PEACH
PARFAIT

163813764 | OBEY STAY ALERT | D1 - EARLIEST DELIVERY: JANUARY 15TH



PIGMENT SURF SPRAY

PIGMENT CLASSIC TEE

- PIGMENT GARMENT DYED TEE
- PRINTED GRAPHIC

- 100% COTTON
- 6 OZ

- REGULAR FIT

S M L XL XXL



PIGMENT VINTAGE
BLACK



PIGMENT SAGO

163813765 | OBEY PEACE & LOVE FOR ALL | D1 - EARLIEST DELIVERY: JANUARY 15TH



PIGMENT MOCHA BISQUE

PIGMENT CLASSIC TEE

- PIGMENT GARMENT DYED TEE
- PRINTED GRAPHIC

- 100% COTTON
- 6 OZ

- REGULAR FIT

S M L XL XXL



PIGMENT VINTAGE
BLACK



PIGMENT SURF
SPRAY



SILT



CLASSIC TEE

- PRINTED GRAPHIC ON FRONT AND BACK
- 100% COTTON
- 6 OZ
- REGULAR FIT

S M L XL XXL



BLACK



WHITE

WHITE



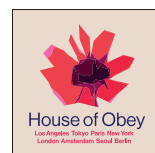
CLASSIC TEE

- PRINTED GRAPHIC ON FRONT AND BACK
- 100% COTTON
- 6 OZ
- REGULAR FIT

S M L XL XXL



BLACK



CREAM

165263716 | OBEY CITY BUILT | D2 - EARLIEST DELIVERY: FEBRUARY 15TH



WHITE

CLASSIC TEE

- PRINTED GRAPHIC ON FRONT AND BACK
- 100% COTTON
- 6 OZ
- REGULAR FIT

S M L XL XXL



BLACK



DIGITAL VIOLET

165263710 | OBEY WAS HERE | D2 - EARLIEST DELIVERY: FEBRUARY 15TH



CUCUMBER

CLASSIC TEE

- PRINTED GRAPHIC ON FRONT AND BACK
- 100% COTTON
- 6 OZ
- REGULAR FIT

S M L XL XXL



CITRUS



WHITE

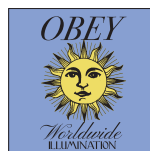


CITRUS

CLASSIC TEE

- PRINTED GRAPHIC ON FRONT AND BACK
- 100% COTTON
- 6 OZ
- REGULAR FIT

S M L XL XXL



DIGITAL VIOLET



WHITE



DIGITAL VIOLET

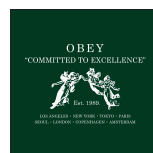
CLASSIC TEE

- PRINTED GRAPHIC ON FRONT AND BACK
- 100% COTTON
- 6 OZ
- REGULAR FIT

S M L XL XXL



BLACK

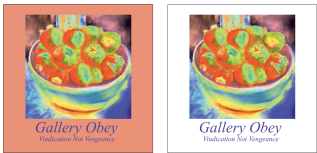


FOREST GREEN



CREAM

- CLASSIC TEE
- PRINTED GRAPHIC ON FRONT AND BACK
 - 100% COTTON
 - 6 OZ
 - REGULAR FIT
- S M L XL XXL



CITRUS WHITE



WHITE

- CLASSIC TEE
- PRINTED GRAPHIC ON FRONT AND BACK
 - 100% COTTON
 - 6 OZ
 - REGULAR FIT
- S M L XL XXL



BLACK CREAM



PEACH PARFAIT

- HEAVYWEIGHT BOX TEE
- GARMENT DYED
 - PRINTED GRAPHIC ON FRONT AND BACK
 - 100% COTTON
 - 8 OZ
 - RELAXED FIT
- S M L XL XXL



JET BLACK HYDRANGEA WHITE



VINTAGE BLACK

- HEAVYWEIGHT BOX TEE
- GARMENT DYED
 - PRINTED GRAPHIC ON FRONT AND BACK
 - 100% COTTON
 - 8 OZ
 - RELAXED FIT
- S M L XL XXL



SURF BLUE WHITE

166913720 | OBEY BREAK MENTAL BONDAGE | D2 - EARLIEST DELIVERY: FEBRUARY 15TH



SURF BLUE

HEAVYWEIGHT BOX TEE

- GARMENT DYED
- PRINTED GRAPHIC ON FRONT AND BACK

- 100% COTTON
- 8 OZ

- RELAXED FIT

S M L XL XXL



VINTAGE BLACK



WHITE

166913726 | OBEY WE COME FROM THE SUN | D2 - EARLIEST DELIVERY: FEBRUARY 15TH



PEACH PARFAIT

HEAVYWEIGHT BOX TEE

- GARMENT DYED
- PRINTED GRAPHIC ON FRONT AND BACK

- 100% COTTON
- 8 OZ

- RELAXED FIT

S M L XL XXL



VINTAGE BLACK



WHITE

166913738 | OBEY PEACE EYES | D2 - EARLIEST DELIVERY: FEBRUARY 15TH



SURF BLUE

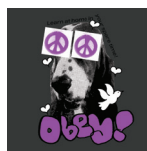
HEAVYWEIGHT BOX TEE

- GARMENT DYED
- PRINTED GRAPHIC ON FRONT AND BACK

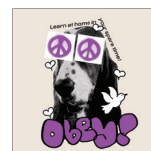
- 100% COTTON
- 8 OZ

- RELAXED FIT

S M L XL XXL



VINTAGE BLACK



SAGO

166913722 | OBEY AN ABUNDANCE OF LIFE | D2 - EARLIEST DELIVERY: FEBRUARY 15TH



ADVENTURE GREEN

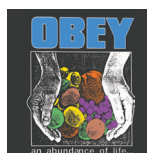
HEAVYWEIGHT BOX TEE

- GARMENT DYED
- PRINTED GRAPHIC ON FRONT AND BACK

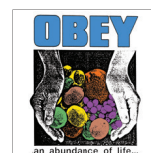
- 100% COTTON
- 8 OZ

- RELAXED FIT

S M L XL XXL



VINTAGE BLACK



WHITE



SAGO

- HEAVYWEIGHT BOX TEE
- GARMENT DYED
 - PRINTED GRAPHIC ON FRONT AND BACK
 - 100% COTTON
 - 8 OZ
 - RELAXED FIT
- S M L XL XXL



VINTAGE BLACK SEPIA



VINTAGE BLACK

- HEAVYWEIGHT BOX TEE
- GARMENT DYED
 - PRINTED GRAPHIC ON FRONT AND BACK
 - 100% COTTON
 - 8 OZ
 - RELAXED FIT
- S M L XL XXL



SILVER GREY WHITE



DEWBERRY

- HEAVYWEIGHT BOX LONG SLEEVE TEE
- GARMENT DYED
 - PRINTED GRAPHIC ON FRONT AND BACK
 - 100% COTTON
 - 8 OZ
 - RELAXED FIT
- S M L XL XXL



VINTAGE BLACK



PEACH PARFAIT



WHITE

- HEAVYWEIGHT BOX LONG SLEEVE TEE
- GARMENT DYED
 - PRINTED GRAPHIC ON FRONT AND BACK
 - 100% COTTON
 - 8 OZ
 - RELAXED FIT
- S M L XL XXL



HYDRANGEA



SILVER GREY



PIGMENT HYDRANGEA

PIGMENT CLASSIC TEE

- PIGMENT GARMENT DYED TEE
- PRINTED GRAPHIC

- 100% COTTON
- 6 OZ

- REGULAR FIT

S M L XL XXL



PIGMENT MOCHA
BISQUE



PIGMENT PEACH
PARFAIT



PIGMENT SAGO

PIGMENT CLASSIC TEE

- PIGMENT GARMENT DYED TEE
- PRINTED GRAPHIC

- 100% COTTON
- 6 OZ

- REGULAR FIT

S M L XL XXL



PIGMENT
SURF SPRAY



PIGMENT PEACH
PARFAIT



PIGMENT VINTAGE BLACK

PIGMENT CLASSIC TEE

- PIGMENT GARMENT DYED TEE
 - PRINTED GRAPHIC
 - 100% COTTON
 - 6 OZ
 - REGULAR FIT
- S M L XL XXL



PIGMENT PEACH
PARFAIT



PIGMENT SAGO



PIGMENT MOCHA BISQUE

PIGMENT CLASSIC TEE

- PIGMENT GARMENT DYED TEE
 - PRINTED GRAPHIC
 - 100% COTTON
 - 6 OZ
 - REGULAR FIT
- S M L XL XXL



PIGMENT
VINTAGE BLACK



PIGMENT
HYDRANGEA

The background is composed of large, organic, overlapping shapes in three colors: blue, red, and green. The blue shape is at the top right. The red shape is on the left and bottom. The green shape is in the center and bottom right. The word "OBEY" is printed in white, bold, sans-serif capital letters across the top, partially overlapping the blue and red shapes.

OBEY

SPRING 2024 | MENS COLLECTION

































































































