

# OBÉY

SPRING 2023 | MEN'S COLLECTION





The OBEY campaign can be explained as an experiment in phenomenology. The first aim of phenomenology is to reawaken a sense of wonder about one's environment. The OBEY campaign attempts to stimulate curiosity and bring people to question both the campaign and their relationship with their surroundings. Because people are not used to seeing advertisements or propaganda for which the motive is not obvious, frequent and novel encounters with OBEY propaganda provoke thought and possible frustration, nevertheless revitalizing the viewer's perception and attention to detail. To catalyze a thoughtful dialogue deconstructing the process of image absorption is the ultimate goal. All in the name of fun and observation.

The medium is the message.

17462 Von Karman Avenue Irvine, CA 92614

obeyclothing.com | obeygiant.com  
949.596.8400



# TABLE OF CONTENTS

## SPRING 2023

### DELIVERY 1

7	23	29	32
SHEPARD FAIREY COLLECTION	JACKETS	SHACKETS	SWEATERS
36	44	52	55
TOPS	SPECIALTY FLEECE	RECYCLED KNITS + SPECIALTY FLEECE	BOTTOMS
64	84	94	101
DENIM COLLECTION	HEADWEAR	BAGS / SOCKS	ACCESSORIES
106	118	130	
CORE PRINTABLE'S	LIFESTYLE PRINTABLES	SUSTAINABLE PRINTABLES	

### DELIVERY 2

70	78	134	143
TOPS	BOTTOMS	LIFESTYLE PRINTABLES	SUSTAINABLE PRINTABLES





OBEY is committed to bettering itself in its manufacturing chain both on an environmental level but also with regard to worker's rights. We look at reducing our environmental footprint whenever possible - from choosing sustainable and socially responsible manufacturing techniques to delivering our clothing to you. This is an ongoing challenge and we continue to push ourselves every season to do better. We are constantly exploring new options in the market. In 2015, we started working with Fair Trade to offer certified garments that ensure economic empowerment to factory workers. We have moved to sustainable factories whenever possible and look to industry developments allowing us to use more recycled and renewable materials. These steps are important to our company and are an ongoing process. We respect everything it takes to make the garments we sell and want to ensure we are doing our best for the world around us.

Our IDEALS program highlights the products that are sustainably built, are produced in Fair Trade factories, are made from organic cotton, or are made from recycled fabrics. Look for these icons on select clothing in stores and online. They represent conscious approaches to our production process and are important to the OBEY ethos.

"Social responsibility and justice have always been very important to OBEY in both message and practice. We work with manufacturers that provide a fair wage and ethical working conditions, and have now made the further step to become an official Fair Trade USA partner ([www.FairTradeusa.org](http://www.FairTradeusa.org)). Our Fair Trade Certified™ garments are produced in factories that operate against rigorous social, environmental and economic standards, where workers can do their jobs with pride and dignity. For every Fair Trade Certified product sold, workers earn more money to fight poverty and fund community development. Our hope is not only to benefit the workers of the Fair Trade factories, but to lead by example and promote the expansion of the Fair Trade apparel program."

- Shepard Fairey





This icon indicates that this garment is constructed sustainably. More than just sustainable raw materials, we consider the social environment, and economic impact of its production.



This icon indicates that this garment is constructed with organic cotton. Certified organic cotton following strict regulations without the use of GMO's harmful pesticides, or synthetic fertilizers.



Fair Trade USA's Fair Trade Certified™ label empowers you, the consumer, with the knowledge that your purchase has a positive impact on the people who sew and grow the products you love.

For every OBEY Fair Trade Certified™ product sold, a percentage is paid directly to a special fund for the workers that create our goods. They decide collectively how to spend these funds based on their communities greatest needs: from scholarships, school buses, to medical care, disaster and relief services.



This icon indicates that this garment is constructed with recycled materials. Per t-shirt, 1.6 recycled plastic bottles and .10lbs of recycled cotton are used.

Reduce, Reuse, Recycle!





# FAIRTRADE



Fair Trade is a market-based approach that empowers factory workers and farmers to fight poverty, produce quality products, protect the environment and build strong thriving communities for generations to come. At the same time, Fair Trade USA's Fair Trade Certified™ label empowers you, the consumer, with the knowledge that your purchase has a positive impact on the people who sew and grow the products you love. For every OBEY Fair Trade Certified™ product sold, a percentage is paid directly to a special fund for the workers that create our goods. They decide collectively how to spend these funds based on the community's greatest needs: from scholarships and school buses, to medical care and disaster relief services.



# SHEPARD FAIREY

ARTIST - ACTIVIST

Shepard Fairey, founder of OBEY and OBEY Clothing, was born in Charleston, South Carolina. He received his Bachelor of Fine Arts in Illustration at the Rhode Island School of Design in Providence, Rhode Island. In 1989 he created the "Andre the Giant has a Posse" sticker that transformed into the OBEY GIANT art campaign, with imagery that has changed the way people see art and the urban landscape. After 29 years, his work has evolved into an acclaimed body of art, which includes the 2008 "Hope" portrait of Barack Obama, found at the Smithsonian's National Portrait Gallery. The artist collaborated with Amplifier in 2017 to create the We The People series recognizable during the Women's Marches and other rallies around the world in defense of national and global social justice issues.

Fairey's stickers, guerilla street art presence, and 85 plus public murals are recognizable worldwide. His works are in the permanent collections of the Museum of Modern Art (MoMA), the Victoria and Albert Museum, the Smithsonian's National Portrait Gallery, the Boston Institute of Contemporary Art, the San Francisco Museum of Modern Art, and many others.

Fairey's distinct and recognizable style is unique to him and to OBEY. His lifestyle is the catalyst for all the brand does and the center point of influence and inspiration. This section isolates his work, from his classic graphic style to fine art renderings on garments. Each season, Shepard tackles new ideas and adds his special touch that makes OBEY what it is.

We hope you enjoy.



OBEY FIST

\$22.50 / \$45

165263405

DESCRIPTION: CLASSIC FIT T-SHIRT

CONTENT: 100% COTTON

SILT, BLACK, FOREST GREEN

XS S M L XL XXL



SILT



BLACK



FOREST GREEN

D1 - SHEPARD FAIREY COLLECTION - CLASSIC TEE

OBEY TORN ICON FACE

\$22.50 / \$45

165263406

DESCRIPTION: CLASSIC FIT T-SHIRT

CONTENT: 100% COTTON

BLACK, DIGITAL VIOLET, WHITE

XS S M L XL XXL



BLACK



DIGITAL VIOLET



WHITE

D1 - SHEPARD FAIREY COLLECTION - CLASSIC TEE

OBEY DYSTOPIA UTOPIA

\$22.50 / \$45

165263407

DESCRIPTION: CLASSIC FIT T-SHIRT

CONTENT: 100% COTTON

SAND, BLACK, FOREST GREEN

XS S M L XL XXL



SAND



BLACK



FOREST GREEN

D1 - SHEPARD FAIREY COLLECTION - CLASSIC TEE

OBEY END POLICE BRUTALITY

\$22.50 / \$45

165263408

DESCRIPTION: CLASSIC FIT T-SHIRT

CONTENT: 100% COTTON

FOREST GREEN, BLACK, CREAM

XS S M L XL XXL



FOREST GREEN



BLACK



CREAM

D1 - SHEPARD FAIREY COLLECTION - CLASSIC TEE

OBEY PEACE DOVE BLUE

\$22.50 / \$45

165263409

DESCRIPTION: CLASSIC FIT T-SHIRT

CONTENT: 100% COTTON

WHITE, BLACK, CITRUS

XS S M L XL XXL



WHITE



BLACK



CITRUS

D1 - SHEPARD FAIREY COLLECTION - CLASSIC TEE

OBEY HONG KONG PHOTO

\$22.50 / \$45

165263410

DESCRIPTION: CLASSIC FIT T-SHIRT

CONTENT: 100% COTTON

BROWN SUGAR, BLACK, WHITE

XS S M L XL XXL



BROWN SUGAR



BLACK



WHITE

D1 - SHEPARD FAIREY COLLECTION - CLASSIC TEE

OBEY DOVE BARBED WIRE

\$22.50 / \$45

165263432

DESCRIPTION: CLASSIC FIT T-SHIRT

CONTENT: 100% COTTON

CUCUMBER, BLACK, WHITE

XS S M L XL XXL



CUCUMBER



BLACK



WHITE

D1 - SHEPARD FAIREY COLLECTION - CLASSIC TEE

OBEY FAIRWEATHER FRIENDS

\$22.50 / \$45

165263433

DESCRIPTION: CLASSIC FIT T-SHIRT

CONTENT: 100% COTTON

NAVY, BLACK, CREAM

XS S M L XL XXL



NAVY



BLACK



CREAM

D1 - SHEPARD FAIREY COLLECTION - CLASSIC TEE



OBHEY DESTRUCTION AND CONSTRUCTION

\$22.50 / \$45

165263434

DESCRIPTION: CLASSIC FIT T-SHIRT

CONTENT: 100% COTTON

FOREST GREEN, BLACK, CREAM

XS S M L XL XXL



FOREST GREEN



BLACK



CREAM

D1 - SHEPARD FAIREY COLLECTION - CLASSIC TEE

DECO ICON FACE

\$22.50 / \$45

165263435

DESCRIPTION: CLASSIC FIT T-SHIRT

CONTENT: 100% COTTON

CREAM, BLACK, WHITE

XS S M L XL XXL



CREAM



BLACK



WHITE

D1 - SHEPARD FAIREY COLLECTION - CLASSIC TEE

OBEY WAKE UP CALL

\$22.50 / \$45

165263436

DESCRIPTION: CLASSIC FIT T-SHIRT

CONTENT: 100% COTTON

NAVY, BLACK, CREAM

XS S M L XL XXL



NAVY



BLACK



CREAM

D1 - SHEPARD FAIREY COLLECTION - CLASSIC TEE

OBEY RISE ABOVE ROSE

\$22.50 / \$45

165263437

DESCRIPTION: CLASSIC FIT T-SHIRT

CONTENT: 100% COTTON

SAND, BLACK, WHITE

XS S M L XL XXL



SAND



BLACK



WHITE

D1 - SHEPARD FAIREY COLLECTION - CLASSIC TEE

OBEY TORN ICON FACE

\$62.50 / \$125

117463406

DESCRIPTION: PREMIUM FRENCH TERRY FLEECE HOOD

CONTENT: 80% COTTON 20% POLYESTER

BLACK, PALM LEAF

XS S M L XL XXL



PALM LEAF

BLACK

D1 - SHEPARD FAIREY COLLECTION - PREMIUM FRENCH TERRY FLEECE HOOD

OBEY PEACE DOVE BLUE

\$62.50 / \$125

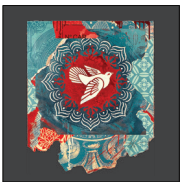
117463409

DESCRIPTION: PREMIUM FRENCH TERRY FLEECE HOOD

CONTENT: 80% COTTON 20% POLYESTER

UNBLEACHED, BLACK

XS S M L XL XXL



BLACK

UNBLEACHED

D1 - SHEPARD FAIREY COLLECTION - PREMIUM FRENCH TERRY FLEECE HOOD

OBEY TORN ICON FACE

163003406

DESCRIPTION: ORGANIC TEE

CONTENT: 100% ORGANIC COTTON

CELERY JUICE, FADED BLACK, PAPAYA SMOOTHIE

XS S M L XL XXL



CELERY JUICE



FADED BLACK



PAPAYA SMOOTHIE

D1 - SHEPARD FAIREY COLLECTION - ORGANIC TEE

OBEY DYSTOPIA UTOPIA

163003407

DESCRIPTION: ORGANIC TEE

CONTENT: 100% ORGANIC COTTON

TERRACOTTA, FADED BLACK, PAPAYA SMOOTHIE

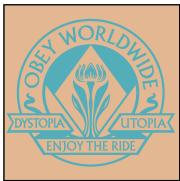
XS S M L XL XXL



TERRACOTTA



FADED BLACK



PAPAYA SMOOTHIE

D1 - SHEPARD FAIREY COLLECTION - ORGANIC TEE



OBEY END POLICE BRUTALITY

\$30 / \$60

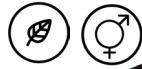
163003408

DESCRIPTION: ORGANIC TEE

CONTENT: 100% ORGANIC COTTON

FADED BLACK, CELERY JUICE, SAGO

XS S M L XL XXL



FADED BLACK



CELERY JUICE



SAGO

D1 - SHEPARD FAIREY COLLECTION - ORGANIC TEE

OBEY PEACE DOVE BLUE

\$30 / \$60

163003409

DESCRIPTION: ORGANIC TEE

CONTENT: 100% ORGANIC COTTON

TRANQUIL BLUE, FADED BLACK, SAGO

XS S M L XL XXL



TRANQUIL BLUE



FADED BLACK



SAGO

D1 - SHEPARD FAIREY COLLECTION - ORGANIC TEE

OBEY DOVE BARBED WIRE

\$30 / \$60

163003432

DESCRIPTION: ORGANIC TEE

CONTENT: 100% ORGANIC COTTON

SAGO, FADED BLACK, PAPAYA SMOOTHIE

XS S M L XL XXL



SAGO



FADED BLACK



PAPAYA SMOOTHIE

D1 - SHEPARD FAIREY COLLECTION - ORGANIC TEE

OBEY FAIRWEATHER FRIENDS

\$30 / \$60

163003433

DESCRIPTION: ORGANIC TEE

CONTENT: 100% ORGANIC COTTON

FADED BLACK, PALM LEAF, SAGO

XS S M L XL XXL



FADED BLACK



PALM LEAF



SAGO

D1 - SHEPARD FAIREY COLLECTION - ORGANIC TEE

OBEY DESTRUCTION AND CONSTRUCTION

\$30 / \$60

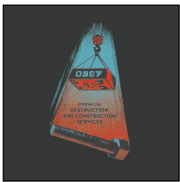
163003434

DESCRIPTION: ORGANIC TEE

CONTENT: 100% ORGANIC COTTON

CELERY JUICE, FADED BLACK, TERRACOTTA

XS S M L XL XXL



FADED BLACK



TERRACOTTA

CELERY JUICE

D1 - SHEPARD FAIREY COLLECTION - ORGANIC TEE

OBEY RISE ABOVE ROSE

\$30 / \$60

163003437

DESCRIPTION: ORGANIC TEE

CONTENT: 100% ORGANIC COTTON

DIGITAL VIOLET, FADED BLACK, PAPAYA SMOOTHIE

XS S M L XL XXL



FADED BLACK



PAPAYA SMOOTHIE

DIGITAL VIOLET

D1 - SHEPARD FAIREY COLLECTION - ORGANIC TEE

**BASTARDS LEATHER JACKET**

\$350 / \$700

**121800233**

DESCRIPTION: MOTORCYCLE REAL LEATHER JACKET WITH SILVER HARDWARE

CONTENT: 100% LEATHER

BLACK

**S M L XL XXL**



BLACK

SHEPARD FAIREY COLLECTION - ESSENTIALS

**BASTARDS PU JACKET**

\$100 / \$200

**121800239**

DESCRIPTION: PU LEATHER MOTORCYCLE JACKET WITH SILVER HARDWARE

CONTENT: 100% PU LEATHER

BLACK

**S M L XL XXL**



BLACK

SHEPARD FAIREY COLLECTION - ESSENTIALS



OBEY PEACE DOVE BLUE

\$25 / \$50

100733409

DESCRIPTION: RESPONSIBLE TOTE BAG MADE FROM RECYCLED YARNS

CONTENT: 65% RECYCLED COTTON 35% RECYCLED PET PLASTIC

NATURAL

O/S



NATURAL

SHEPARD FAIREY COLLECTION - ESSENTIALS

COVERT TO OVERT BOOK

\$45 / \$90

326000035M

DESCRIPTION: COVERT TO OVERT SHOWCASES SHEPARD FAIREY'S EVOLUTION FROM WORKS ON PAPER TO GRANDER ART INSTALLATIONS, CROSS-CULTURAL WORKS, AND MUSIC/ART COLLABORATIONS

ASSORTED

O/S



ASSORTED

SHEPARD FAIREY COLLECTION - ESSENTIALS

# **DELIVERY ONE**

# JACKETS



CARE DENIM VARSITY

\$135 / \$270

121800530

FIT: REGULAR FIT

DESCRIPTION: DENIM VARSITY JACKET WITH EMBROIDERY

100% COTTON

LIGHT INDIGO MULTI, DUSTY BLACK MULTI

XS S M L XL XXL



D1 - JACKETS

HYMN JACKET

\$95 / \$190

121800531

FIT: REGULAR FIT

DESCRIPTION: DENIM CHORE JACKET WITH EMBROIDERIES

100% COTTON

STONEWASH INDIGO, UNBLEACHED

XS S M L XL XXL



D1 - JACKETS



ROMES CORD JACKET

\$100 / \$20

121800534

FIT: REGULAR FIT

DESCRIPTION: CORDUROY JACKET WITH EMBROIDERIES

100% COTTON

DARK CEDAR, VINTAGE PINK

S M L XL XXL



DARK CEDAR



VINTAGE PINK

D1 - JACKETS

CARTER REVERSIBLE JACKET

\$122.50 / \$245

121800533

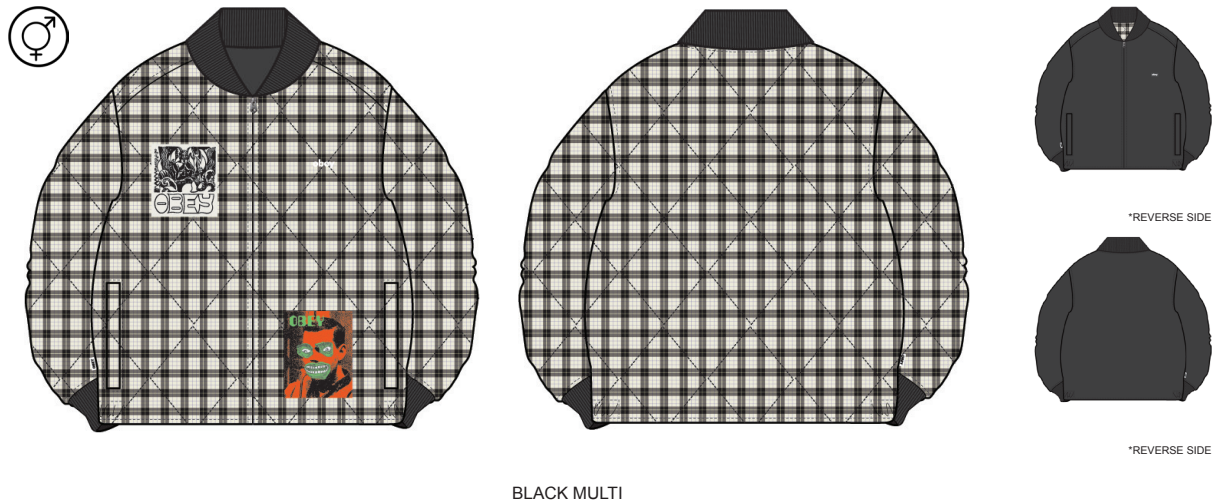
FIT: REGULAR FIT

DESCRIPTION: REVERSIBLE QUILTED FLANNEL JACKET

100% COTTON SELF / 100% POLYESTER LINING

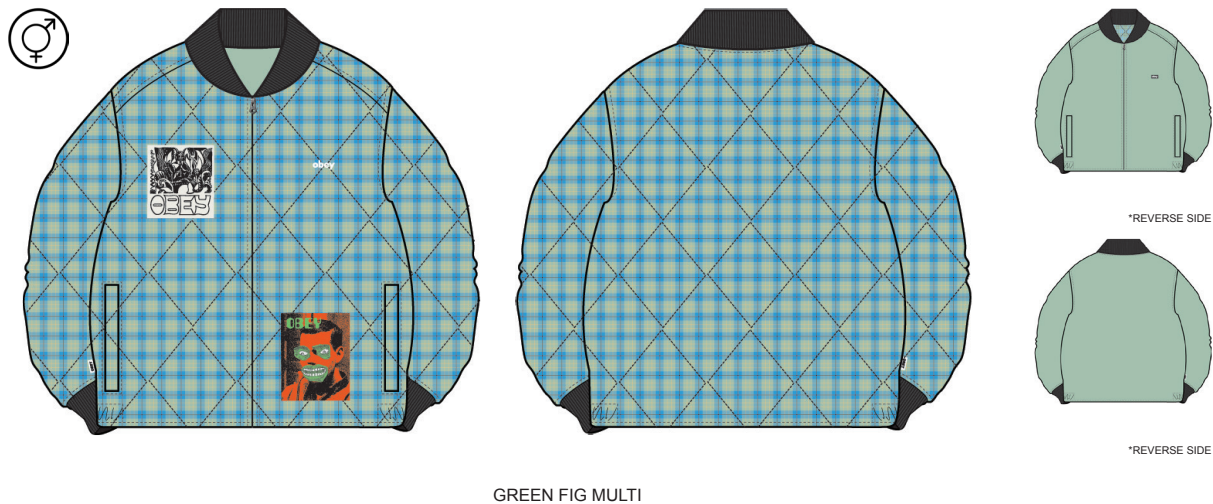
BLACK MULTI, GREEN FIG MULTI

XS S M L XL XXL



D1 - JACKETS

\$122.50 / \$245



D1 - JACKETS

**BRYSON JACKET**

**\$95 / \$190**

**121800532**

FIT: REGULAR FIT

DESCRIPTION: RAGLAN JACKET WITH CORDUROY COLLAR AND OBEY PATCH

100% COTTON

IRISH CREAM MULTI, NAVY INK MULTI

**S M L XL XXL**



IRISH CREAM MULTI



NAVY INK MULTI

D1 - JACKETS

**SURPLUS JACKET**

**\$105 / \$210**

**121800535**

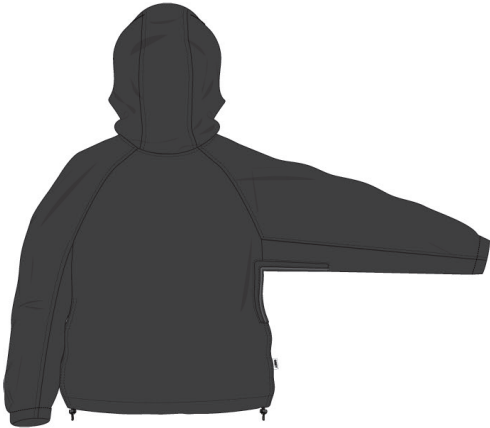
FIT: REGULAR FIT

DESCRIPTION: NYLON ZIP HOOD JACKET WITH OBEY PRINT

100% NYLON

BLACK, IRISH CREAM

**XS S M L XL XXL**



BLACK



IRISH CREAM

D1 - JACKETS

**BLANKETS JACKET**

\$120 / \$240

**121800536**

FIT: REGULAR FIT

DESCRIPTION: ZIP HOOD JACKET WITH ART GRAPHIC AT BACK

100% POLYESTER

PALM LEAF, BLACK

**XS S M L XL XXL**



BLACK

PALM LEAF

D1 - JACKETS

**FROGGY COACH JACKET**

\$82.50 / \$165

**121800537**

FIT: REGULAR FIT

DESCRIPTION: COACHES JACKET WITH ART GRAPHIC AT BACK

100% POLYESTER

IRISH CREAM, BLACK

**S M L XL XXL**



BLACK

IRISH CREAM

D1 - JACKETS



# SHACKETS

Rosa's  
Cafe

CITY  
ISH BA  
NER KEBAB  
& CHIPS  
12377 037

NOTICE  
Parki  
suspension



**CONTRAST SHIRT JACKET**

**\$107.50 / \$215**

**121160042**

FIT: REGULAR FIT

DESCRIPTION: COTTON CANVAS SHIRT JACKET WITH EMBROIDERIES

100% COTTON

UNBLEACHED, SMOKEY OLIVE

**XS S M L XL XXL**



UNBLEACHED



SMOKEY OLIVE

D1 - SHACKETS

**MONTE CORD SHIRT JACKET**

**\$85 / \$170**

**121160043**

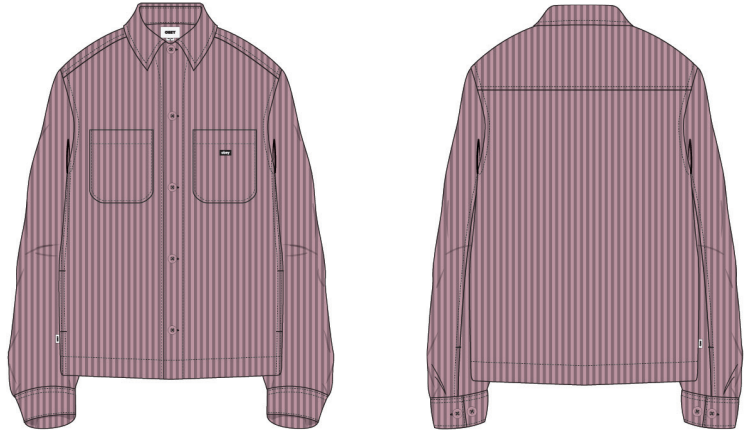
FIT: REGULAR FIT

DESCRIPTION: CORDUROY BUTTON FRONT SHIRT JACKET

100% COTTON

VINTAGE PINK, SEPIA

**S M L XL XXL**



VINTAGE PINK



SEPIA

D1 - SHACKETS

**NATIONAL SHIRT JACKET**

**\$95 / \$190**

**121160044**

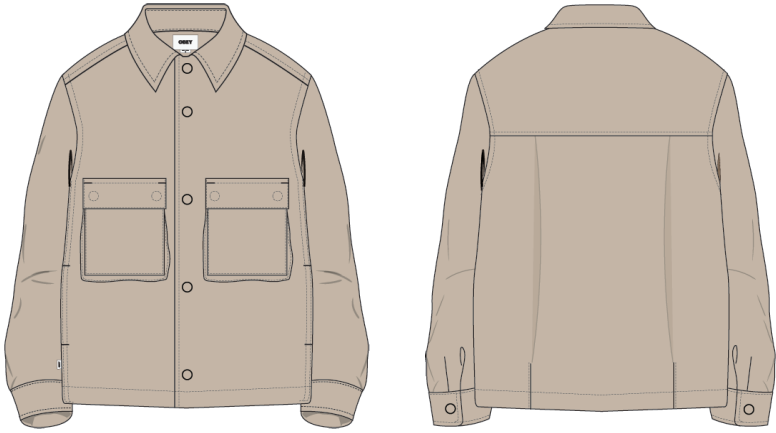
FIT: REGULAR FIT

DESCRIPTION: POPLIN SHIRT JACKET W/ LIGHT WEIGHT FILL

100% COTTON

IRISH CREAM, BLACK

**S M L XL XXL**



IRISH CREAM



BLACK

D1 - SHACKETS

**DISTRICT SHIRT JACKET**

**\$112.50 / \$225**

**121160045**

FIT: REGULAR FIT

DESCRIPTION: PLAID TWEED SHIRT JACKET

100% POLYESTER

GREY SKIES MULTI, IRISH CREAM MULTI

**S M L XL XXL**



GREY SKIES MULTI



IRISH CREAM MULTI

D1 - SHACKETS

# SWEATERS



TOTEM ZIP CARDIGAN

\$62.50 / \$125

151010032

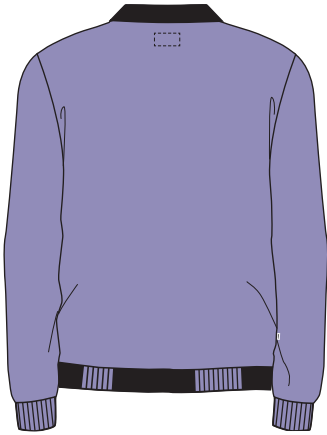
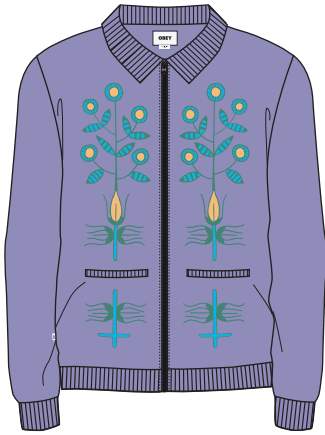
FIT: REGULAR FIT

DESCRIPTION: CARDIGAN WITH INTARSIA PATTERN

100% COTTON

PURPLE FLOWER, UNBLEACHED

S M L XL XXL



UNBLEACHED

PURPLE FLOWER

D1 - SWEATERS

OVAL CARDIGAN

\$62.50 / \$125

151010031

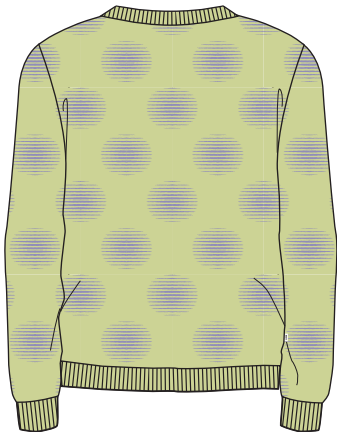
FIT: REGULAR FIT

DESCRIPTION: CARDIGAN WITH INTARSIA PATTERN

100% COTTON

CELERY JUICE MULTI, BLACK MULTI

S M L XL XXL



BLACK MULTI

CELERY JUICE MULTI

D1 - SWEATERS

**SPATIAL CREW SWEATER**

\$55 / \$110

**151000067**

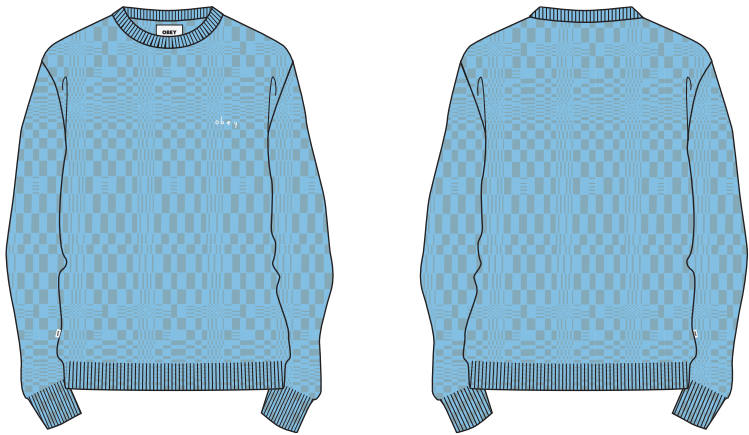
FIT: REGULAR FIT

DESCRIPTION: CREWNECK SWEATER WITH TEXTURE

100% COTTON

SKY BLUE, UNBLEACHED

**S M L XL XXL**



UNBLEACHED

SKY BLUE

D1 - SWEATERS

**SWAT SWEATER**

\$55 / \$110

**151000068**

FIT: REGULAR FIT

DESCRIPTION: PATTERN CREWNECK SWEATER

100% COTTON

SEPIA, PEACH SAND

**S M L XL XXL**



PEACH SAND

SEPIA

D1 - SWEATERS



DEFACED SWEATER VEST

\$50 / \$100

151000066

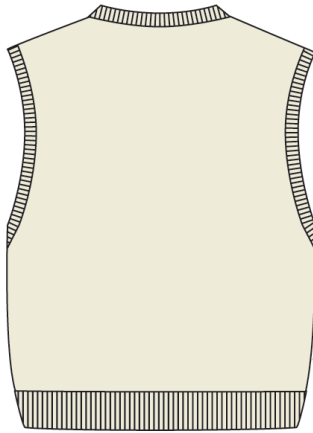
FIT: REGULAR FIT

DESCRIPTION: PATTERN SWEATER VEST

100% COTTON

UNBLEACHED MULTI, DIGITAL LAVENDER MULTI

S M L XL XXL



DIGITAL LAVENDER MULTI

UNBLEACHED MULTI

D1 - SWEATERS

SURFACE POLO SWEATER SS

\$55 / \$110

151000069

FIT: REGULAR FIT

DESCRIPTION: COLLARED S/S SWEATER WITH STRIPE TEXTURE

100% COTTON

SEPIA MULTI, UNBLEACHED MULTI

S M L XL XXL



UNBLEACHED MULTI

SEPIA MULTI

D1 - SWEATERS



**TOPS**

**BREAK TEE SS**

\$35 / \$70

**131080340**

FIT: REGULAR FIT

DESCRIPTION: SHORT SLEEVE TEE WITH OBEY EMBROIDERY

100% COTTON

SKY BLUE MULTI, ROOBIOS MULTI

**S M L XL XXL**



ROOBIOS MULTI

SKY BLUE MULTI

D1 - TOPS

**DIRECT TEE LS**

\$42.50 / \$85

**131030126**

FIT: REGULAR FIT

DESCRIPTION: LONG SLEEVE TEE WITH OBEY EMBROIDERY

100% COTTON

WHITE MULTI, SKY BLUE MULTI

**S M L XL XXL**



SKY BLUE MULTI

WHITE MULTI

D1 - TOPS

WEDGE POCKET TEE SS

\$35 / \$70

131080343

FIT: REGULAR FIT

DESCRIPTION: CREW NECK SHORT SLEEVE POCKET TEE WITH

100% COTTON

BAY LEAF MULTI, BLACK MULTI

S M L XL XXL



BAY LEAF MULTI



BLACK MULTI

D1 - TOPS

POINT POCKET TEE SS

\$35 / \$70

131080287

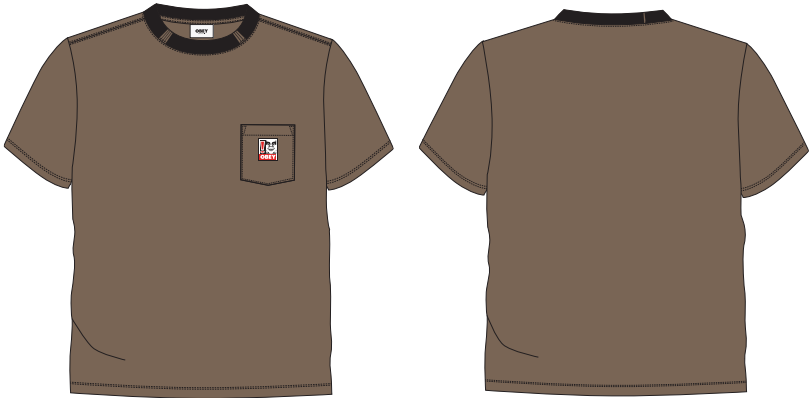
FIT: REGULAR FIT

DESCRIPTION: CREW NECK POCKET TEE WITH OBEY LABEL

100% ORGANIC COTTON

SILT, BLACK, DIGITAL LAVENDER, WHITE

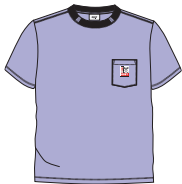
S M L XL XXL



SILT



BLACK



DIGITAL LAVENDER



WHITE

D1 - TOPS

ANNO JACQUARD POLO SS

131090074

FIT: REGULAR FIT

DESCRIPTION: POLO SHIRT WITH PATTERN AND LOGO LABEL

100% COTTON

SKY BLUE MULTI, BLACK MULTI

S M L XL XXL



SKY BLUE MULTI



BLACK MULTI

D1 - TOPS

PENSA VELOUR POLO SS

\$55 / \$110

131090073

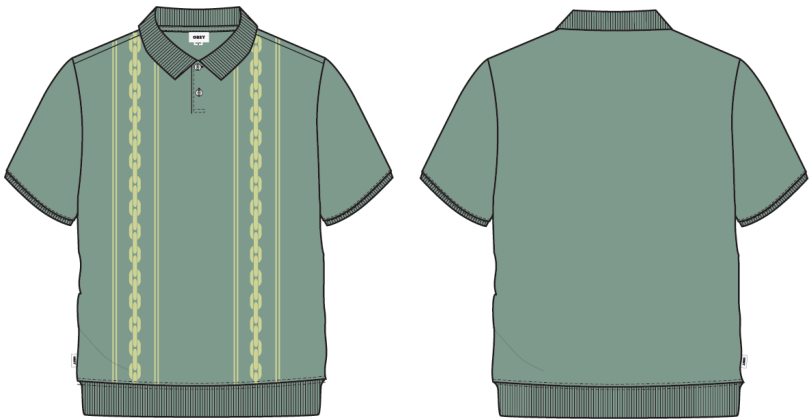
FIT: REGULAR FIT

DESCRIPTION: VELOUR POLO ENGINEERED STRIPE AND EMBROIDERY

80% COTTON 20% POLYESTER

JADE MULTI, UNBLEACHED MULTI

S M L XL XXL



JADE MULTI



UNBLEACHED MULTI

D1 - TOPS



**PIECES WOVEN**

**181200366**

FIT: REGULAR FIT

DESCRIPTION: LS POPLIN WOVEN WITH EMBROIDERY

100% COTTON

GOOD GREY, WHITE

**S M L XL XXL**

**\$55 / \$110**



WHITE

GOOD GREY

D1 - TOPS

**BENNIE WOVEN**

**181210365**

FIT: REGULAR FIT

DESCRIPTION: WAFFLE PLAID S/S WOVEN

100% COTTON

UNBLEACHED MULTI, CELERY JUICE MULTI

**S M L XL XXL**

**\$50 / \$100**



CELERY JUICE MULTI

UNBLEACHED MULTI

D1 - TOPS

LOVELESS WOVEN

\$50 / \$100

181210370

FIT: REGULAR FIT

DESCRIPTION: SS WOVEN WITH PRINT

100% COTTON

WHITE MULTI, DIGITAL LAVENDER MULTI

S M L XL XXL



DIGITAL LAVENDER MULTI

WHITE MULTI

D1 - TOPS

BISCUITS WOVEN

\$50 / \$100

181210366

FIT: REGULAR FIT

DESCRIPTION: SS WOVEN WITH PRINT

100% COTTON

BLACK MULTI, WHITE MULTI

S M L XL XXL



WHITE MULTI

BLACK MULTI

D1 - TOPS

FRANK WOVEN

181210368

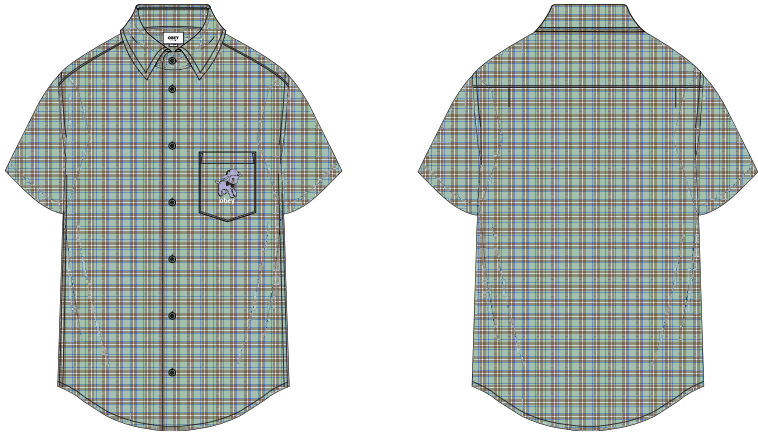
FIT: REGULAR FIT

DESCRIPTION: SS PLAID WOVEN WITH EMBROIDERY

100% COTTON

GREEN FIG MULTI, SKY BLUE MULTI

S M L XL XXL



SKY BLUE MULTI

GREEN FIG MULTI

D1 - TOPS

CONNECT WOVEN

\$50 / \$100

181210386

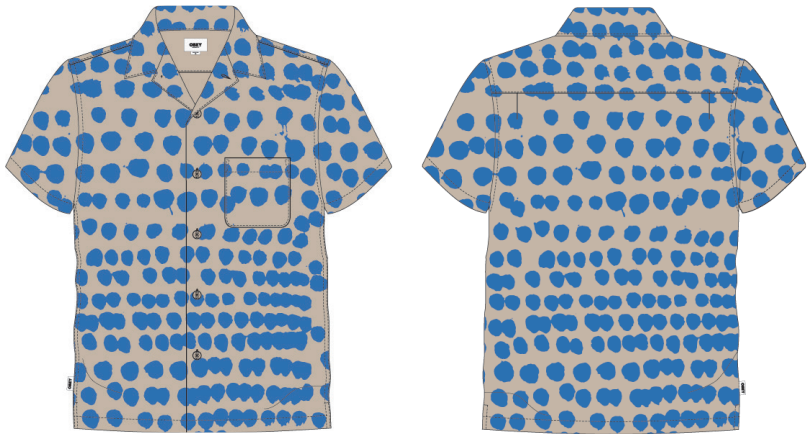
FIT: REGULAR FIT

DESCRIPTION: SS WOVEN WITH PRINT

100% COTTON

IRISH CREAM MULTI, WHITE MULTI

S M L XL XXL



WHITE MULTI

IRISH CREAM MULTI

D1 - TOPS

LANKERSHIM WOVEN

\$50 / \$100

181210369

FIT: REGULAR FIT

DESCRIPTION: SS WOVEN WITH PRINT

100% COTTON

WILD ROSE MULTI, WHITE MULTI

S M L XL XXL



WHITE MULTI

WILD ROSE MULTI

D1 - TOPS

DISORDER WOVEN

\$50 / \$100

181210367

FIT: REGULAR FIT

DESCRIPTION: SS WOVEN WITH PRINT

100% COTTON

WHITE MULTI, TURQUOISE SEA MULTI

S M L XL XXL



TURQUOISE SEA MULTI

WHITE MULTI

D1 - TOPS

**SPECIALTY  
FLEECE**

DAVID JORDAN SET THE MOOD  
DEBUT ALBUM  
RELEASED 5th NOVEMBER

CLEARCHANNEL

SATELLITE 91

HINK DVID (Germ)  
ALBY (Germ)  
PAUL JORDAN (Germ)  
TRON (Germ)  
PAULO JARDIM  
(Germ)  
TANIA VON FEAR  
ILANA BISKY  
RICK MAIA

DAVID JORDAN SET THE MOOD

DEBUT ALBUM  
RELEASED 5th NOVEMBER

CLEARCHANNEL

TRAX

333

SPECIALTY  
FLEECE

SATELLITE  
91

DAVID JORDAN (Santal)  
ALAN TAYLOR (Santal)  
PAUL JORDAN (Santal)  
TRON (Santal)  
PAULO JARDIM (Santal)  
TANIA VON PEAR (Santal)  
ILANA BISKY (Santal)  
RICK MAIA (Santal)

DAVID JORDAN SET THE MOOD

DEBUT ALBUM  
RELEASED 5th NOVEMBER

CLEARCHANNEL

TRAX

333

SPECIALTY  
FLEECE

SATELLITE  
91

DAVID JORDAN (Santal)  
ALAN TAYLOR (Santal)  
PAUL JORDAN (Santal)  
TRON (Santal)  
PAULO JARDIM (Santal)  
TANIA VON PEAR (Santal)  
ILANA BISKY (Santal)  
RICK MAIA (Santal)

OBEY LOWERCASE HOOD

\$55 / \$110

112470162

FIT: REGULAR FIT

DESCRIPTION: FLEECE HOOD WITH LOGO EMBROIDERY

58% COTTON 42% POLYESTER

SKY BLUE, BLACK, PALM LEAF

XS S M L XL XXL



SKY BLUE



BLACK



PALM LEAF

D1 - SPECIALTY FLEECE

OBEY LOWERCASE CREW

\$50 / \$100

112480125

FIT: REGULAR FIT

DESCRIPTION: FLEECE CREW WITH LOGO EMBROIDERY

58% COTTON 42% POLYESTER

PALM LEAF, BLACK, SKY BLUE

XS S M L XL XXL



PALM LEAF



BLACK



SKY BLUE

D1 - SPECIALTY FLEECE



**TAG HOOD**

**112470189**

FIT: REGULAR FIT

DESCRIPTION: FLEECE HOOD WITH LOGO EMBROIDERY

58% COTTON 42% POLYESTER

DIGITAL LAVENDER, SEPIA

**XS S M L XL XXL**

**\$55 / \$110**



DIGITAL LAVENDER



SEPIA

D1 - SPECIALTY FLEECE

**BASKET HOOD**

**112470191**

FIT: REGULAR FIT

DESCRIPTION: FLEECE HOOD WITH LOGO EMBROIDERY

58% COTTON 42% POLYESTER

SUN DIAL, SKY BLUE

**XS S M L XL XXL**

**\$62.50 / \$125**



SUN DIAL



SKY BLUE

D1 - SPECIALTY FLEECE

**YOUR FUTURE HOOD**

**\$62.50 / \$125**

**112470190**

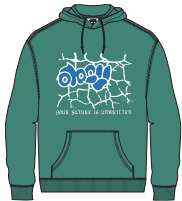
FIT: REGULAR FIT

DESCRIPTION: FLEECE HOOD WITH LOGO EMBROIDERY

58% COTTON 42% POLYESTER

BLACK, PALM LEAF

**XS S M L XL XXL**



PALM LEAF

BLACK

D1 - SPECIALTY FLEECE

**CHERUB CREW**

**\$67.50 / \$135**

**112480134**

FIT: REGULAR FIT

DESCRIPTION: FLEECE CREW WITH LOGO EMBROIDERY

58% COTTON 42% POLYESTER

SKY BLUE, SEPIA

**XS S M L XL XXL**



SEPIA

SKY BLUE

D1 - SPECIALTY FLEECE

HAUS MUSIK CREW

\$62.50 / \$125

112480135

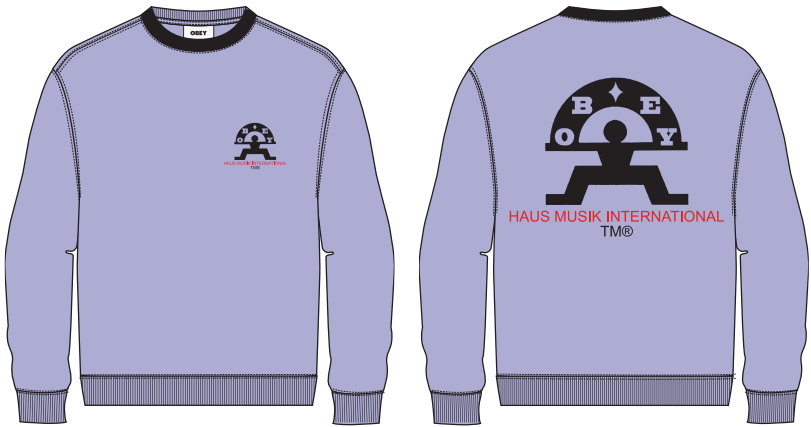
FIT: REGULAR FIT

DESCRIPTION: FLEECE CREW WITH LOGO EMBROIDERY

58% COTTON 42% POLYESTER

DIGITAL LAVENDER, SUN DIAL

XS S M L XL XXL



SUN DIAL

DIGITAL LAVENDER

D1 - SPECIALTY FLEECE

HOUND CREW

\$50 / \$100

112480136

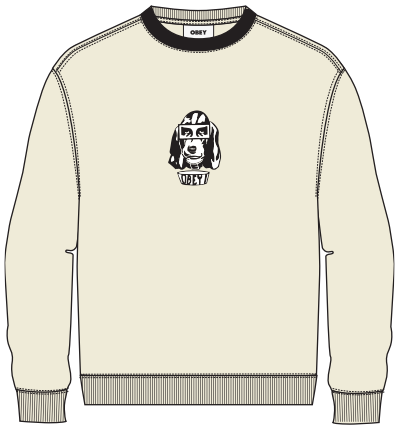
FIT: REGULAR FIT

DESCRIPTION: FLEECE HOOD WITH LOGO EMBROIDERY

58% COTTON 42% POLYESTER

UNBLEACHED, PALM LEAF

XS S M L XL XXL



PALM LEAF

UNBLEACHED

D1 - SPECIALTY FLEECE

TRIBAL ZIP HOOD

112460017

FIT: REGULAR FIT

DESCRIPTION: FLEECE ZIP HOOD WITH LOGO EMBROIDERY

58% COTTON 42% POLYESTER

PALM LEAF, BLACK

XS S M L XL XXL



BLACK

PALM LEAF

D1 - SPECIALTY FLEECE

SCRIBBLES ZIP HOOD

112460018

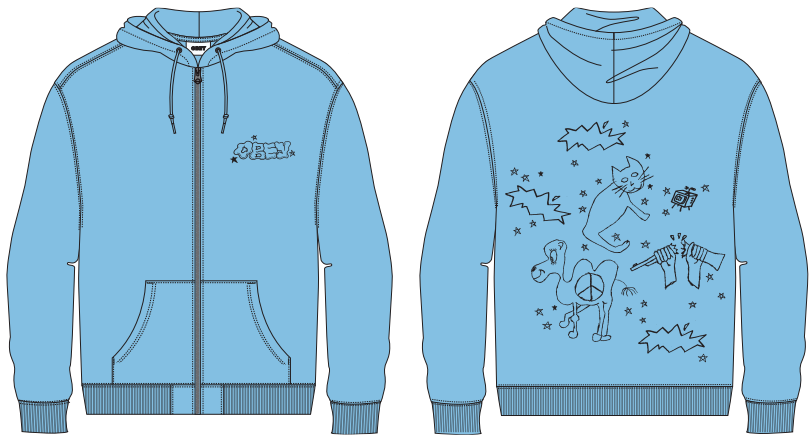
FIT: REGULAR FIT

DESCRIPTION: FLEECE ZIP HOOD WITH LOGO EMBROIDERY

58% COTTON 42% POLYESTER

SKY BLUE, PALM LEAF

XS S M L XL XXL



PALM LEAF

SKY BLUE

D1 - SPECIALTY FLEECE

FORA ZIP POLO SWEATSHIRT

\$62.50 / \$125

111620081

FIT: REGULAR FIT

DESCRIPTION: 1/4 ZIP POLO SWEATSHIRT WITH EMBROIDERY

100% COTTON

BLACK, PALM LEAF

S M L XL XXL



BLACK



PALM LEAF

D1 - SPECIALTY FLEECE

NEUE POLO SWEATSHIRT LS

\$62.50 / \$125

111620082

FIT: REGULAR FIT

DESCRIPTION: VELOUR POLO SWEATSHIRT WITH OBEY EMBROIDERY

80% COTTON 20% POLYESTER

UNBLEACHED, SKY BLUE

S M L XL XXL



UNBLEACHED



SKY BLUE

D1 - SPECIALTY FLEECE

RESOL STRIPE CREW

\$55 / \$110

112480133

FIT: REGULAR FIT

DESCRIPTION: CREWNECK SWEATSHIRT WITH EMBROIDERY

100% COTTON

VINTAGE PINK MULTI, SEPIA MULTI

S M L XL XXL



SEPIA MULTI

VINTAGE PINK MULTI

D1 - SPECIALTY FLEECE

ODESSA VELOUR VEST

\$62.50 / \$125

134050055

FIT: REGULAR FIT

DESCRIPTION: PRINTED VELOUR VEST

80% COTTON 20% POLYESTER

SEPIA MULTI, DARK CEDAR MULTI

S M L XL XXL



DARK CEDAR MULTI

SEPIA MULTI

D1 - SPECIALTY FLEECE





**RECYCLED  
KNITS  
+  
SPECIALTY  
FLEECE**

TIMELESS RECYCLED POCKET TEE LS

\$40 / \$80

131030116

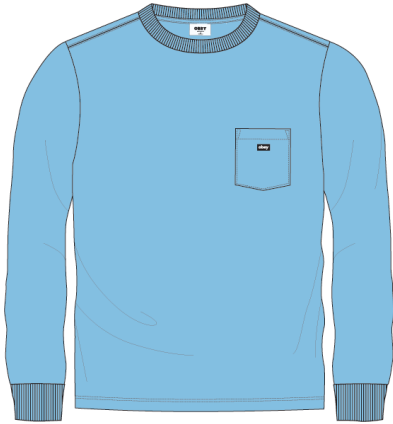
FIT: REGULAR FIT

DESCRIPTION: PIGMENT DYED RECYCLED FABRIC POCKET LONG SLEEVE KNIT

60% RECYCLED COTTON 40% RECYCLED POLYESTER

SKY BLUE PIGMENT, SUNSET CORAL PIGMENT, TERRACOTTA PIGMENT

S M L XL XXL



SKY BLUE PIGMENT



SUNSET CORAL PIGMENT



TERRACOTTA PIGMENT

D1 - RECYCLED KNITS & SECIALTY FLEECE

TIMELESS RECYCLED TEE SS

\$35 / \$70

131080319

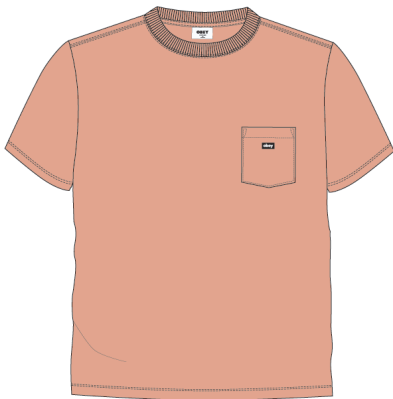
FIT: REGULAR FIT

DESCRIPTION: PIGMENT DYED RECYCLED FABRIC POCKET SHORT SLEEVE KNIT

60% RECYCLED COTTON 40% RECYCLED POLYESTER

SUNSET CORAL PIGMENT, TERRACOTTA PIGMENT, SKY BLUE PIGMENT

S M L XL XXL



SUNSET CORAL PIGMENT



TERRACOTTA PIGMENT



SKY BLUE PIGMENT

D1 - RECYCLED KNITS & SECIALTY FLEECE

TIMELESS RECYCLED HEAVYWEIGHT HOOD

\$65 / \$130

112470159

FIT: REGULAR FIT

DESCRIPTION: RECYCLED HEAVY WEIGHT HOOD WITH OBEY BRANDING

73% RECYCLED COTTON 27% RECYCLED POLY

TERRACOTTA PIGMENT, SKY BLUE PIGMENT, SUNSET CORAL PIGMENT

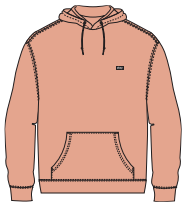
XS S M L XL XXL



TERRACOTTA PIGMENT



SKY BLUE PIGMENT



SUNSET CORAL PIGMENT

D1 - RECYCLED KNITS & SECIALTY FLEECE

TIMELESS RECYCLED HEAVYWEIGHT CREW

\$55 / \$110

112480114

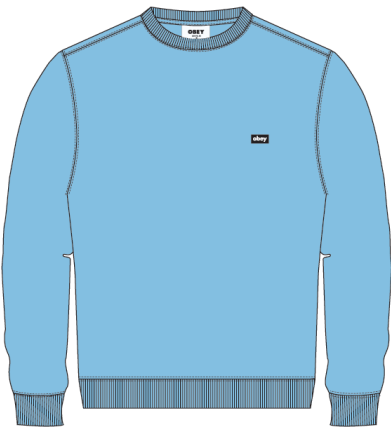
FIT: REGULAR FIT

DESCRIPTION: RECYCLED HEAVY WEIGHT CREW WITH OBEY BRANDING

73% RECYCLED COTTON 27% RECYCLED POLYESTER

SKY BLUE PIGMENT, SUNSET CORAL PIGMENT, TERRACOTTA PIGMENT

XS S M L XL XXL



SKY BLUE PIGMENT



SUNSET CORAL PIGMENT



TERRACOTTA PIGMENT

D1 - RECYCLED KNITS & SECIALTY FLEECE



**BOTTOMS**

STRAGGLER FLOODED PANT

\$50 / \$100

142020113

FIT: STANDARD FIT

DESCRIPTION: FLOODED PANT

60% COTTON 39% POLYESTER 1% SPANDEX

BLACK, SEPIA BROWN, LEAF

26 27 28 29 30 31 32 33 34 36 38



BLACK



SEPIA BROWN



LEAF

D1 - BOTTOMS

STRAGGLER PANT

\$50 / \$100

142020150

FIT: STANDARD FIT

DESCRIPTION: STRAIGHT LEG PANT

60% COTTON 39% POLYESTER 1% SPANDEX

SEPIA BROWN, BLACK, LEAF

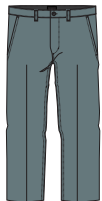
26 27 28 29 30 31 32 33 34 36 38



SEPIA BROWN



BLACK



LEAF

D1 - BOTTOMS

HARDWORK CARPENTER PANT

\$55 / \$110

142020184

FIT: REGULAR FIT

DESCRIPTION: CARPENTER PANT

100% COTTON

DARK BROWN, BLACK, WHITE

26 27 28 29 30 31 32 33 34 36 38



DARK BROWN



BLACK



WHITE

D1 - BOTTOMS

HUGHES TWILL PANT

\$55 / \$110

142020198

FIT: REGULAR FIT

DESCRIPTION: CASUAL TWILL PANT

100% COTTON

DULL BLUE, BLACK, FIELD GREEN

26 27 28 29 30 31 32 33 34 36 38



DULL BLUE



BLACK



FIELD GREEN

D1 - BOTTOMS



FUBAR PLEATED PANT

\$55 / \$110

142020201

FIT: RELAXED FIT

DESCRIPTION: RELAXED FIT PLEATED PANTS

60% POLY 40% RAYON

SEPIA, BLACK, JADE

26 27 28 29 30 31 32 33 34 36 38



SEPIA



BLACK



JADE

D1 - BOTTOMS

FUBAR PLEATED PLAID PANT

\$57.50 / \$115

142020202

FIT: RELAXED FIT

DESCRIPTION: RELAXED FIT PLEATED PANT

60% COTTON 40% POLYESTER

UNBLEACHED MULTI, JADE MULTI

26 27 28 29 30 31 32 33 34 36 38



UNBLEACHED MULTI



JADE MULTI

D1 - BOTTOMS

ESTATE PANT

\$55 / \$110

142020183

FIT: RELAXED FIT

DESCRIPTION: HEAVYWEIGHT TWILL PANT WITH SINGLE PLEAT FRONT

100% COTTON

IRISH CREAM, BLACK, DARK BROWN

26 27 28 29 30 31 32 33 34 36 38



IRISH CREAM



BLACK



DARK BROWN

D1 - BOTTOMS

\$60 / \$120

ESTATE EMBROIDERY PANT

142020210

FIT: RELAXED FIT

DESCRIPTION: PLEATED TWILL PANT WITH OBEY EMBROIDERY

100% COTTON

DARK BROWN, BLACK, IRISH CREAM

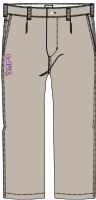
26 27 28 29 30 31 32 33 34 36 38



DARK BROWN



BLACK



IRISH CREAM

D1 - BOTTOMS

BIG TIMER DOUBLE KNEE CARPENTER PANT

\$72.50 / \$145

142020211

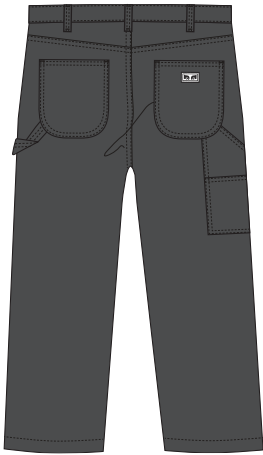
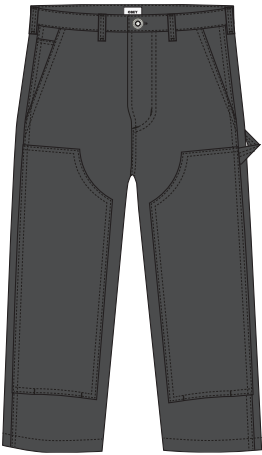
FIT: RELAXED FIT

DESCRIPTION: DOUBLE KNEE WORK PANTS WITH PATCH POCKETS

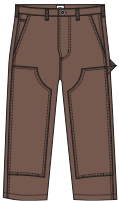
100% COTTON

BLACK, SEPIA, UNBLEACHED

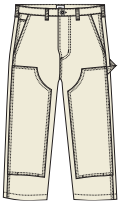
26 27 28 29 30 31 32 33 34 36 38



BLACK



SEPIA



UNBLEACHED

D1 - BOTTOMS

BIG TIMER EMBROIDERED CORD PANT

\$80 / \$160

142020212

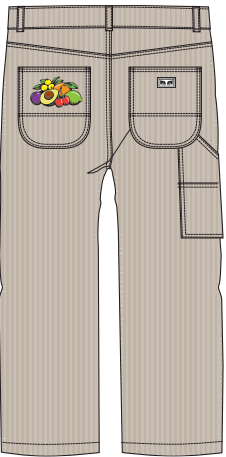
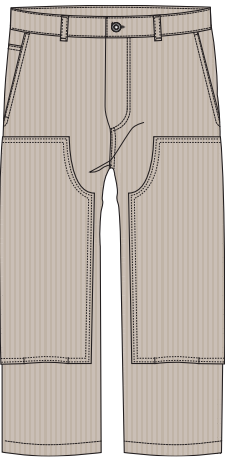
FIT: RELAXED FIT

DESCRIPTION: CORDUROY CARPENTER PANT WITH EMBROIDERY

100% COTTON

IRISH CREAM, DARK CEDAR

26 27 28 29 30 31 32 33 34 36 38



IRISH CREAM



DARK CEDAR

D1 - BOTTOMS

EASY TWILL PANT

\$50 / \$100

142020142

FIT: RELAXED FIT

DESCRIPTION: ELASTIC WAIST TWILL PANT

100% COTTON

IRISH CREAM, BLACK, FIELD GREEN

XS S M L XL XXL



IRISH CREAM



BLACK



FIELD GREEN

D1 - BOTTOMS

EASY RIPSTOP CARGO PANT

\$60 / \$120

142020196

FIT: RELAXED FIT

DESCRIPTION: ELASTIC WAIST RIPSTOP CARGO PANT

100% COTTON

BLACK, FIELD GREEN, DARK BROWN

XS S M L XL XXL



BLACK



FIELD GREEN



DARK BROWN

D1 - BOTTOMS

EASY CORD PANT

\$60 / \$120

142020195

FIT: RELAXED FIT

DESCRIPTION: WIDE WALE ELASTIC CORDUROY PANT

100% COTTON

VINTAGE PINK, DARK CEDAR, SEPIA, IRISH CREAM

XS S M L XL XXL



VINTAGE PINK



DARK CEDAR



SEPIA



IRISH CREAM

D1 - BOTTOMS

BIG EASY CANVAS PANT

\$65 / \$130

142020203

FIT: RELAXED FIT

DESCRIPTION: ELASTIC WAIST DOUBLE KNEE CANVAS PANT

100% COTTON

DARK BROWN, SMOKEY OLIVE, UNBLEACHED

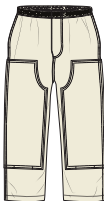
XS S M L XL XXL



DARK BROWN



SMOKEY OLIVE



UNBLEACHED

D1 - BOTTOMS

RAPTURE ZIP OFF CARGO PANT

\$85 / \$170

142020209

FIT: RELAXED FIT

DESCRIPTION: NYLON ZIP OFF CARGO PANT WITH PRINT

100% NYLON

BLACK, FIELD GREEN

XS S M L XL XXL



FIELD GREEN

BLACK

D1 - BOTTOMS

EARWORM SWEATPANT

\$62.50 / \$125

142030045

FIT: CLASSIC FIT

DESCRIPTION: SWEATPANT WITH PRINT

58% COTTON 42% POLYESTER

SEPIA, BLACK

XS S M L XL XXL



BLACK

SEPIA

D1 - BOTTOMS



# DENIM COLLECTION



**HARDWORK DENIM**

**\$57.50 / \$115**

**142010077**

**\*\*\*FADED BLACK: \$65 / \$130**

FIT: RELAXED FIT

DESCRIPTION: RELAXED FIT BUTTON FLY DENIM WITH EYES LABELING

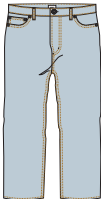
100% COTTON

STONEWASH INDIGO, LIGHT INDIGO, FADED BLACK

26 27 28 29 30 31 32 33 34 36 38



STONEWASH INDIGO



LIGHT INDIGO



FADED BLACK

D1 - DENIM COLLECTION

**HARDWORK CARPENTER DENIM**

**\$60 / \$120**

**142010078**

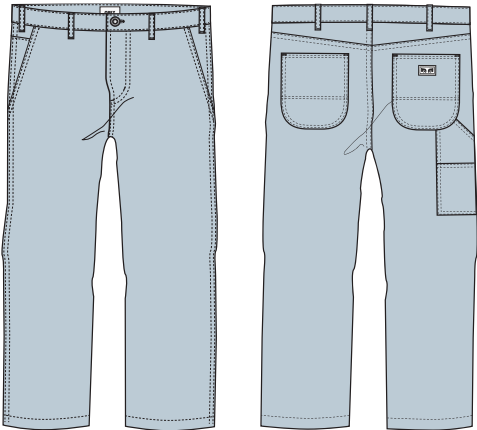
FIT: RELAXED FIT

DESCRIPTION: DENIM CARPENTER PANT

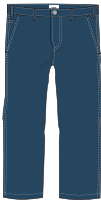
100% COTTON

LIGHT INDIGO, STONEWASH INDIGO

26 27 28 29 30 31 32 33 34 36 38



LIGHT INDIGO



STONEWASH INDIGO

D1 - DENIM COLLECTION

**BENDER DENIM**

**\$57.50 / \$115**

**142010080**

**\*\*\*FADED BLACK: \$62.50 / \$125**

FIT: STANDARD FIT

DESCRIPTION: STANDARD FIT 5 POCKET DENIM

100% COTTON

FADED BLACK, STONEWASH INDIGO, LIGHT INDIGO

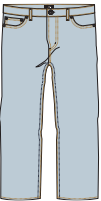
26 27 28 29 30 31 32 33 34 36 38



FADED BLACK



STONEWASH INDIGO



LIGHT INDIGO

D1 - DENIM COLLECTION

**FUBAR PLEATED DENIM**

**\$60 / \$120**

**142010082**

**\*\*\* FADED BLACK: \$62.50 / \$125**

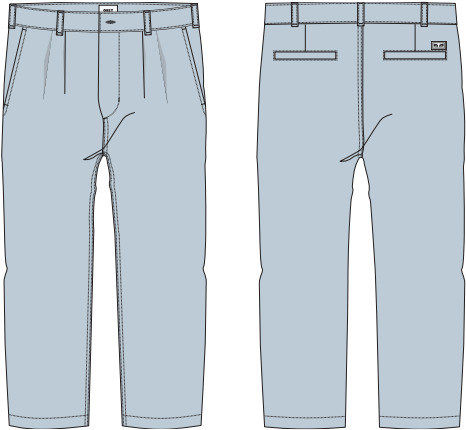
FIT: RELAXED FIT

DESCRIPTION: RELAXED FIT DENIM PANTS

100% COTTON

LIGHT INDIGO, FADED BLACK

26 27 28 29 30 31 32 33 34 36 38



LIGHT INDIGO



FADED BLACK

D1 - DENIM COLLECTION

EASY DENIM PANT

\$57.50 / \$115

142010079

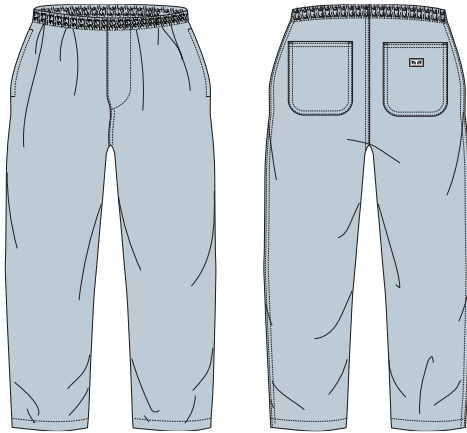
FIT: RELAXED FIT

DESCRIPTION: ELASTIC WAIST PATCH POCKET DENIM PANT

100% COTTON

LIGHT INDIGO, FADED BLACK

XS S M L XL XXL



LIGHT INDIGO



FADED BLACK

D1 - DENIM COLLECTION

BIGWIG BAGGY DENIM

\$70 / \$140

142010087

FIT: BAGGY FIT

DESCRIPTION: BAGGY FIT 5 POCKET DENIM

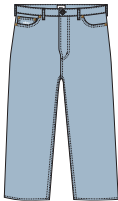
100% COTTON

STONEWASH INDIGO, LIGHT INDIGO

26 27 28 29 30 31 32 33 34 36 38



STONEWASH INDIGO



LIGHT INDIGO

D1 - DENIM COLLECTION

**BIGWIG KINGPIN BAGGY DENIM**

**\$72.50 / \$145**

**142010090**

FIT: BAGGY FIT

DESCRIPTION: BAGGY FIT 5 POCKET DENIM WITH EMBROIDERIES

100% COTTON

LIGHT INDIGO, FADED BLACK

26 27 28 29 30 31 32 33 34 36 38



FADED BLACK

LIGHT INDIGO

D1 - DENIM COLLECTION

**BIGWIG CARGO DENIM**

**\$77.50 / \$155**

**142010088**

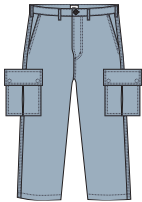
FIT: RELAXED FIT

DESCRIPTION: BAGGY FIT DENIM CARGO PANT WITH EMBROIDERY

100% COTTON

STONEWASH INDIGO, LIGHT INDIGO

26 27 28 29 30 31 32 33 34 36 38



LIGHT INDIGO

STONEWASH INDIGO

D1 - DENIM COLLECTION

# **DELIVERY TWO**





TOPS



DOE POCKET TEE SS

\$35 / \$70

131080339

FIT: REGULAR FIT

DESCRIPTION: CREW NECK SHORT SLEEVE POCKET TEE WITH

100% COTTON

ROOBIOS MULTI, DIGITAL VIOLET MULTI

S M L XL XXL



DIGITAL VIOLET MULTI

ROOBIOS MULTI

D2 - TOPS

SNAP TEE SS

\$35 / \$70

131080341

FIT: REGULAR FIT

DESCRIPTION: SHORT SLEEVE TEE WITH OBEY EMBROIDERY

100% COTTON

GREEN FIG MULTI, SEPIA MULTI

S M L XL XXL



SEPIA MULTI

GREEN FIG MULTI

D2 - TOPS

**TED RINGER TEE SS**

\$35 / \$70

**131080342**

FIT: REGULAR FIT

DESCRIPTION: EMBROIDERED SHORT SLEEVE RINGER KNIT

100% COTTON

SKY BLUE MULTI, WHITE MULTI

**S M L XL XXL**



SKY BLUE MULTI



WHITE MULTI

D2 - TOPS

**BUGS JACQUARD POLO SS**

\$50 / \$100

**131090072**

FIT: REGULAR FIT

DESCRIPTION: POLO SHIRT WITH PATTERN AND LOGO LABEL

100% COTTON

BLACK MULTI, ROOBIOS MULTI

**S M L XL XXL**



BLACK MULTI



ROOBIOS MULTI

D2 - TOPS

GROVE BUTTON-UP POLO SS

\$55 / \$110

131090070

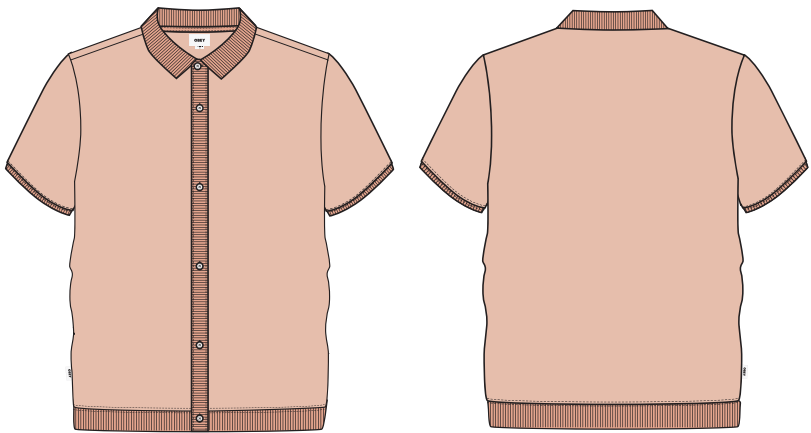
FIT: REGULAR FIT

DESCRIPTION: SHORT SLEEVE BUTTON FRONT POLO

100% COTTON

PEACH SAND, SKY BLUE

S M L XL XXL



SKY BLUE

PEACH SAND

D2 - TOPS

BUBBLE TANK

\$30 / \$60

134050054

FIT: REGULAR FIT

DESCRIPTION: TANK TOP WITH OBEY EMBROIDERY

100% COTTON

WHITE, SILT

S M L XL XXL



SILT

WHITE

D2 - TOPS

CLOCK IN WOVEN

\$50 / \$100

181210372

FIT: REGULAR FIT

DESCRIPTION: SS WOVEN WITH PRINT

100% COTTON

CLAY, JADE

S M L XL XXL



JADE

CLAY

D2 - TOPS

PANTRY WOVEN

\$50 / \$100

181210375

FIT: REGULAR FIT

DESCRIPTION: SS WOVEN WITH PRINT

100% COTTON

BLACK, WHITE

S M L XL XXL



WHITE

BLACK

D2 - TOPS

OUTCOME WOVEN

\$50 / \$100

181210373

FIT: REGULAR FIT

DESCRIPTION: SS WOVEN WITH PRINT

100% VISCOSE

WILD ROSE MULTI, WHITE MULTI

S M L XL XXL



WHITE MULTI

WILD ROSE MULTI

D2 - TOPS

DUBBED WOVEN

\$50 / \$100

181210377

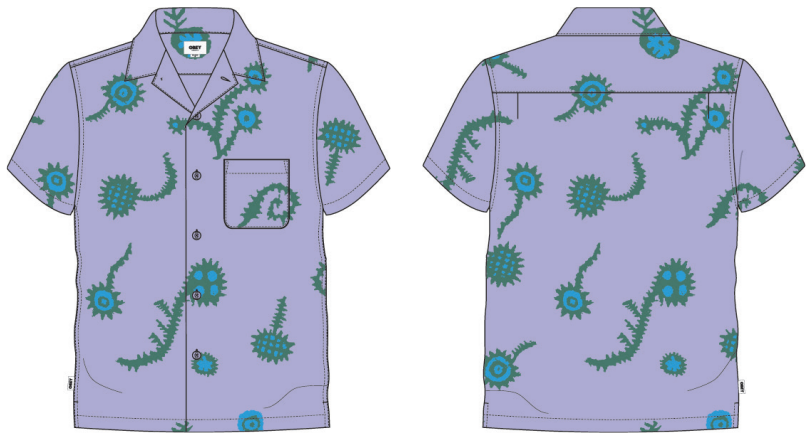
FIT: REGULAR FIT

DESCRIPTION: SS WOVEN WITH PRINT

100% COTTON

DIGITAL LAVENDER MULTI, WHITE MULTI

S M L XL XXL



WHITE MULTI

DIGITAL LAVENDER MULTI

D2 - TOPS



WYATT WOVEN

\$50 / \$100

181210371

FIT: REGULAR FIT

DESCRIPTION: SS WOVEN WITH PRINT

100% COTTON

WHITE MULTI, DIGITAL LAVENDER MULTI

S M L XL XXL



DIGITAL LAVENDER MULTI

WHITE MULTI

D2 - TOPS

FROGMAN WOVEN

\$50 / \$100

181210376

FIT: REGULAR FIT

DESCRIPTION: SS WOVEN WITH PRINT

100% COTTON

WILD ROSE MULTI, WHITE MULTI

S M L XL XXL



WHITE MULTI

WILD ROSE MULTI

D2 - TOPS

SLITHER WOVEN

\$50 / \$100

181210374

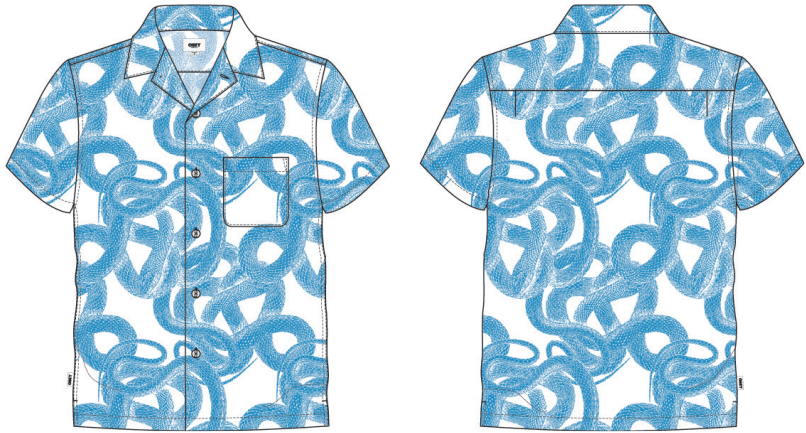
FIT: REGULAR FIT

DESCRIPTION: SS WOVEN WITH PRINT

100% COTTON

WHITE MULTI, BLACK MULTI

S M L XL XXL



WHITE MULTI



BLACK MULTI





**BOTTOMS**

EASY RELAXED TWILL SHORT

\$42.50 / \$85

172120078

FIT: RELAXED FIT

DESCRIPTION: ELASTIC WAIST TWILL BEACH SHORT

100% COTTON

IRISH CREAM, BLACK, FIELD GREEN

S M L XL XXL



BLACK



FIELD GREEN

IRISH CREAM

D2 - SHORTS

EASY RELAXED CORDUROY SHORT

\$50 / \$100

172120080

FIT: RELAXED FIT

DESCRIPTION: ELASTIC WAIST CORDUROY BEACH SHORT

100% COTTON

DARK CEDAR, SEPIA, IRISH CREAM

S M L XL XXL



SEPIA



IRISH CREAM

DARK CEDAR

D2 - SHORTS

EASY RIPSTOP CARGO SHORT

\$55 / \$110

172120077

FIT: RELAXED FIT

DESCRIPTION: ELASTIC WAIST RIPSTOP CARGO SHORT

100% COTTON

FIELD GREEN, BLACK

S M L XL XXL



BLACK

FIELD GREEN

D2 - SHORTS

EASY EYES NYLON SHORT

\$45 / \$90

172120100

FIT: RELAXED FIT

DESCRIPTION: ELASTIC WAIST NYLON SHORT

100% NYLON

BLACK, PALM LEAF, IRISH CREAM

S M L XL XXL



PALM LEAF



IRISH CREAM

BLACK

D2 - SHORTS

**PEAK WEB SHORT**

**\$47.50 / \$95**

**172120101**

FIT: RELAXED FIT

DESCRIPTION: ELASTIC NYLON SHORT WITH WEB BELT AND EMBROIDERY

100% NYLON

PURPLE FLOWER, BLACK, SEPIA

**S M L XL XXL**



BLACK



SEPIA

PURPLE FLOWER

D2 - SHORTS

**HANG OUT WEB BELT SHORT**

**\$47.50 / \$95**

**172120103**

FIT: REGULAR FIT

DESCRIPTION: LASTIC NYLON SHORT WITH WEB BELT AND EMBROIDERY

100% NYLON

PALM LEAF, IRISH CREAM

**S M L XL XXL**



IRISH CREAM

PALM LEAF

D2 - SHORTS



ANGEL GARDEN SWEATSHORT

\$42.50 / \$85

172120106

FIT: CLASSIC FIT

DESCRIPTION: SWEATSHORT WITH PRINT

58% COTTON 42% POLYESTER

UNBLEACHED, DIGITAL LAVENDER

S M L XL XXL



DIGITAL LAVENDER

UNBLEACHED

D2 - SHORTS

EASY DENIM CARPENTER SHORT

\$55 / \$110

172120079

FIT: RELAXED FIT

DESCRIPTION: ELASTIC WAIST DENIM CARPENTER SHORT

100% COTTON

DUSTY BLACK, LIGHT INDIGO

S M L XL XXL



LIGHT INDIGO

DUSTY BLACK

D2 - DENIM SHORTS

BIGWIG BAGGY DENIM SHORT

\$60 / \$120

172100076

FIT: RELAXED FIT

DESCRIPTION: RELAXED DENIM SHORT WITH EMBROIDERY

100% COTTON

STONEWASH INDIGO, LIGHT INDIGO

28 30 31 32 33 34 36 38



LIGHT INDIGO

STONEWASH INDIGO

D2 - DENIM SHORTS



# HEADWEAR

#DTL  
arking  
ing

WAVES

Clamato  
Stay for  
Free

VE. WORK. PLAY.  
ME A DOWNTOWNER  
VISIT [HTTP://WWW.  
DOWNTOWNVEGAS/](http://www.downtownvegas.com)

VAC

**BOLD TWILL 6 PANEL STRAPBACK**  
**100580302**  
FIT: CLASSIC FIT  
DESCRIPTION: 6 PANEL STRAPBACK WITH OBEY EMBROIDERY  
100% COTTON  
BLACK, BROWN BUTTER, UNBLEACHED  
O/S

\$22.50 / \$45



BLACK



BROWN BUTTER

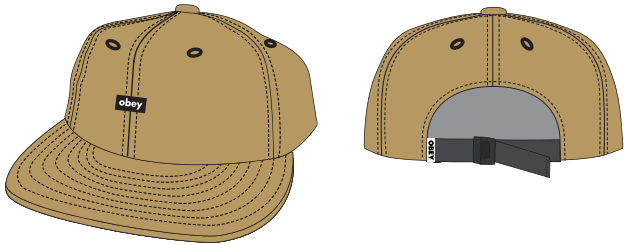


UNBLEACHED

D1 - HEADWEAR

**OBEY LOWER CASE TECH 6 PANEL STRAPBACK**  
**100580339**  
FIT: CLASSIC FIT  
DESCRIPTION: 6 PANEL STRAPBACK WITH LABEL  
60% COTTON 40% NYLON  
BRONZE, BLACK, LAVENDER  
O/S

\$22.50 / \$45



BRONZE



BLACK

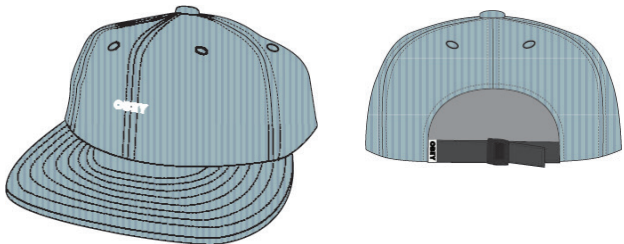


LAVENDER

D1 - HEADWEAR

**BOLD CORD 6 STRAPBACK**  
**100580317**  
FIT: CLASSIC FIT  
DESCRIPTION: 6 PANEL CORDUROY STRAPBACK WITH EMBROIDERY  
100% COTTON  
OCEAN, BLACK, SAND  
O/S

\$22.50 / \$45



OCEAN



BLACK



SAND

D1 - HEADWEAR

OBEY BASQUE 6 PANEL STRAPBACK

\$25 / \$50

100580341

FIT: CLASSIC FIT

DESCRIPTION: 6 PANEL SERGE WOOL STRAPBACK WITH EMBROIDERY  
85% ARCYLIC 15% WOOL

DARK CEDAR, BLACK, IRISH CREAM

O/S



DARK CEDAR



BLACK



IRISH CREAM

D1 - HEADWEAR

OBEY BENNY 6 PANEL SNAPBACK

\$22.50 / \$45

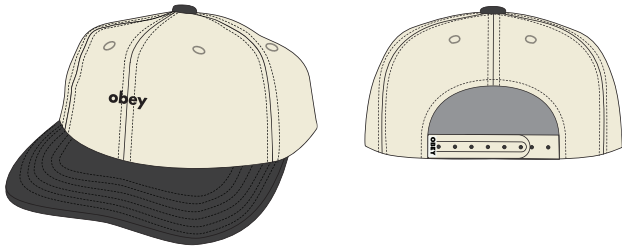
100580342

FIT: CLASSIC FIT

DESCRIPTION: 6 PANEL TWILL SNAPBACK WITH EMBROIDERY  
100% COTTON

BLACK MULTI, LIGHT KHAKI MULTI, LEAF MULTI

O/S



BLACK MULTI



LIGHT KHAKI MULTI



LEAF MULTI

D1 - HEADWEAR

OBEY LOWERCASE 5 PANEL SNAPBACK

\$22.50 / \$45

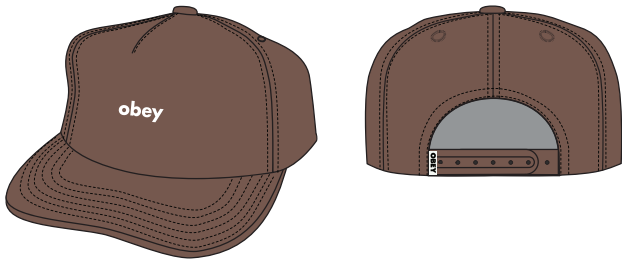
100490108

FIT: CLASSIC FIT

DESCRIPTION: 5 PANEL SNAPPACK WITH EMBROIDERY  
100% COTTON

BROWN, BLACK, LEAF

O/S



BROWN



BLACK



LEAF

D1 - HEADWEAR

OBEY BOLD TECH CAMP CAP

\$22.50 / \$45

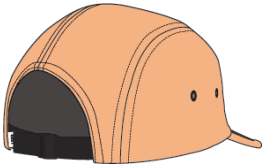
100490109

FIT: CLASSIC FIT

DESCRIPTION: COTTON NYLON CAMP CAP WITH OBEY PRINT  
60% COTTON 40% NYLON

PAPAYA SMOOTHIE, BLACK, DIGITAL MIST

O/S



BLACK



DIGITAL MIST

PAPAYA SMOOTHIE

D1 - HEADWEAR

OBEY TECH MESH CAMP CAP

\$22.50 / \$45

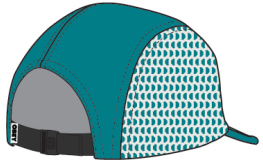
100490110

FIT: CLASSIC FIT

DESCRIPTION: NYLON CAMP CAP WITH MESH SIDE PANELS AND LABEL  
100% NYLON

DARK TEAL MULTI, BLACK MULTI

O/S



BLACK MULTI

DARK TEAL MULTI

D1 - HEADWEAR

OBEY FRUITS 6 PANEL SNAPBACK

\$22.50 / \$45

100580337

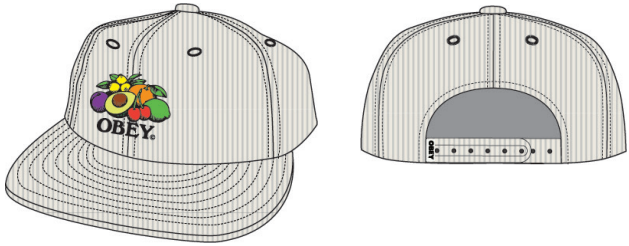
FIT: CLASSIC FIT

DESCRIPTION: 6 PANEL CORD SNAPBACK WITH EMBROIDERY

100% COTTON

UNBLEACHED, DARK CEDAR

O/S



DARK CEDAR

UNBLEACHED

D1 - HEADWEAR

OBEY TRIP 6 PANEL SNAPBACK

\$22.50 / \$45

100580338

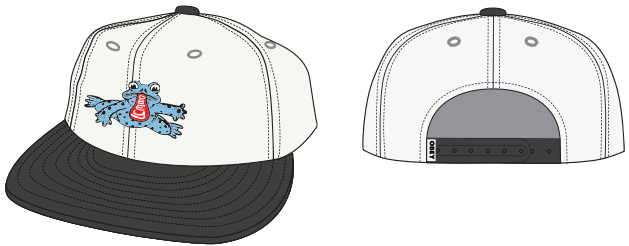
FIT: CLASSIC FIT

DESCRIPTION: 6 PANEL TWILL SNAPBACK WITH EMBROIDERY

100% COTTON

BLACK MULTI, UNBLEACEHD MULTI

O/S



UNBLEACHED MULTI

BLACK MULTI

D1 - HEADWEAR

OBEY BIRDER 6 PANEL STRAPBACK

\$22.50 / \$45

100580336

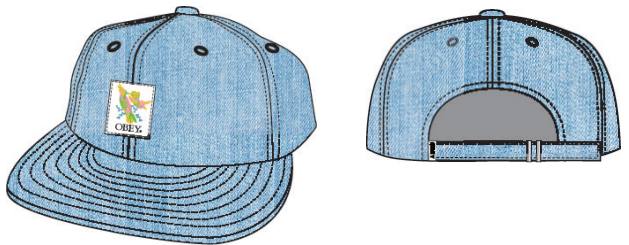
FIT: LOW PROFILE

DESCRIPTION: 6 PANEL STRAPBACK WITH OBEY LABEL

100% COTTON

LIGHT INDIGO, UNBLEACHED

O/S



UNBLEACHED

LIGHT INDIGO

D1 - HEADWEAR



OBEY RITUAL 6 PANEL SNAPBACK

100580340

FIT: MID CROWN

DESCRIPTION: 6 PANEL SNAPBACK WITH EMBROIDERY

85% ACRYLIC 15% WOOL

DARK CEDAR MULTI, BLACK MULTI

O/S

\$25 / \$50



BLACK MULTI

DARK CEDAR MULTI

D1 - HEADWEAR

OBEY BUBBLE 5 PANEL SNAPBACK

100490107

FIT: MID CROWN

DESCRIPTION: 5 PANEL TWILL SNAPBACK WITH EMBROIDERY

100% COTTON

BLACK, LEAF

O/S

\$22.50 / \$45



LEAF

BLACK

D1 - HEADWEAR

OBEY DANCE 5 PANEL SNAPBACK

100490106

FIT: MID CROWN

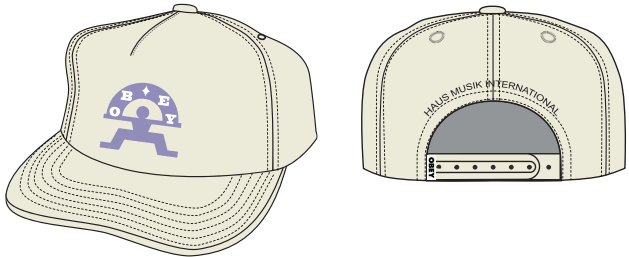
DESCRIPTION: 5 PANEL TWILL SNAPBACK WITH EMBROIDERY

100% COTTON

UNBLEACHED, BLACK

O/S

\$22.50 / \$45



BLACK

UNBLEACHED

D1 - HEADWEAR

**OBEY ANGEL 6 PANEL CLASSIC SNAPBACK**  
**100580333**

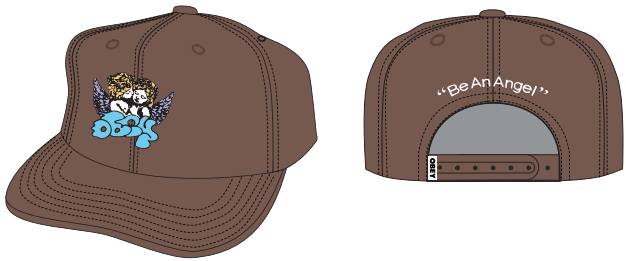
FIT: HIGH CROWN

DESCRIPTION: 6 PANEL WOOL SNAPBACK WITH EMBROIDERY  
85% ACRYLIC 15% WOOL

SEPIA, BLACK

O/S

\$22.50 / \$45



SEPIA



BLACK

D1 - HEADWEAR

**OBEY DAWG 6 PANEL CLASSIC SNAPBACK**  
**100580334**

FIT: HIGH CROWN

DESCRIPTION: 6 PANEL WOOL SNAPBACK WITH EMBROIDERY  
85% ACRYLIC 15% WOOL

BLACK, DARK CEDAR

O/S

\$22.50 / \$45



BLACK



DARK CEDAR

D1 - HEADWEAR

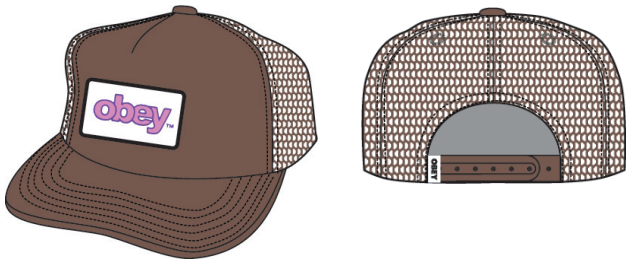
**OBEY MARKED TRUCKER**  
**100500033**

FIT: CLASSIC FIT

DESCRIPTION: 5 PANEL TRUCKER WITH OBEY PATCH  
100% POLYESTER

SEPIA, BLACK

O/S



SEPIA



BLACK

D1 - HEADWEAR

**OBEY HOPPER TRUCKER**

**100500032**

FIT: CLASSIC FIT

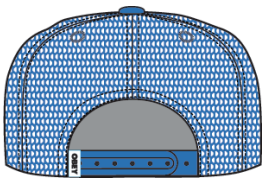
DESCRIPTION: 5 PANEL TRUCKER WITH OBEY SCREEN PRINT

100% POLYESTER

SATIN BLUE, BLACK

O/S

\$22.50 / \$45



BLACK

SATIN BLUE

D1 - HEADWEAR

**BOLD TWILL BUCKET HAT**

**100520055**

FIT: CLASSIC FIT

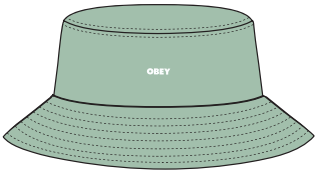
DESCRIPTION: TWILL BUCKET HAT WITH OBEY EMBROIDERY

100% COTTON

GREEN FIG, BLACK, BROWN, LAVENDER

O/S

\$25 / \$50



GREEN FIG



BLACK



BROWN



LAVENDER

D1 - HEADWEAR

**BOLD CORD BUCKET HAT**

**100520051**

FIT: CLASSIC FIT

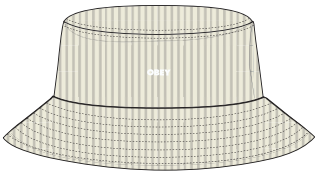
DESCRIPTION: CORDUROY BUCKET HAT WITH OBEY EMBROIDERY

100% COTTON

OFF WHITE, BLACK, OCEAN

O/S

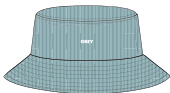
\$25 / \$50



OFF WHITE



BLACK



OCEAN

D1 - HEADWEAR

**BOLD CENTURY BUCKET HAT**

**100520061**

FIT: CLASSIC FIT

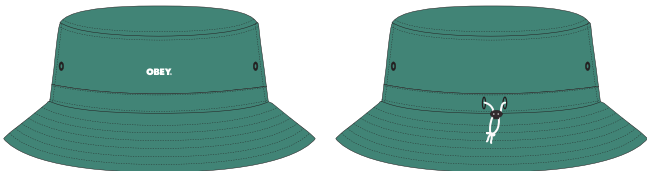
DESCRIPTION: BUCKET HAT WITH ELASTIC BUNGEE AND PRINT

60% COTTON 40% NYLON

TURQUOISE, BLACK

O/S

\$30 / \$60



TURQUOISE



BLACK

D1 - HEADWEAR

OBEY ANNO BUCKET HAT

100520078

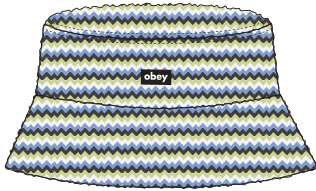
FIT: CLASSIC FIT

DESCRIPTION: KNIT BUCKET HAT WITH LABEL

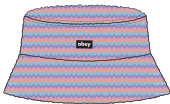
100% COTTON

BLACK MULTI, SKY BLUE MULTI

O/S



BLACK MULTI



SKY BLUE MULTI

D1 - HEADWEAR

OBEY FROGGY BUCKET HAT

100520079

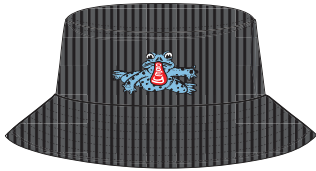
FIT: CLASSIC FIT

DESCRIPTION: CORDUROY BUCKET HAT WITH OBEY EMBROIDERY

100% COTTON

BLACK, OFF WHITE

O/S



BLACK



OFF WHITE

D1 - HEADWEAR

OBEY PARADISE BUCKET HAT

100520080

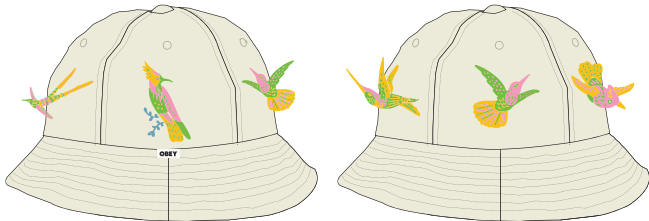
FIT: CLASSIC FIT

DESCRIPTION: CANVAS BELL BUCKET HAT WITH EMBROIDERY

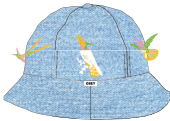
100% COTTON

UNBLEACHED, LIGHT INDIGO

O/S



UNBLEACHED



LIGHT INDIGO

D1 - HEADWEAR



PEACE

LA CAYANE

BAGS

VISUAL DISOBEDIENCE

TENNIS TRAINING

San Hing St  
香港街

**WASTED HIP BAG**  
**100010098**  
DESCRIPTION: SMALL HIP BAG  
100% COTTON TWILL  
DENIM, BLACK  
O/S



DENIM



BLACK TWILL

D1 - BAGS

**COMMUTER WAIST BAG**  
**100010126**  
DESCRIPTION: TECHNICAL WAIST BAG WITH MULTIPLE POCKETS, COMPRESSION STRAPS, AND PVC PATCH  
100% POLYESTER  
PURPLE MULTI, BLACK  
O/S



PURPLE MULTI



BLACK

D1 - BAGS

**CONDITIONS TRAVELER BAG III**  
**100010135**  
DESCRIPTION: SHOULDER BAG WITH MULTIPLE POCKETS AND PVC PATCH  
100% POLYESTER  
BLACK, PURPLE MULTI  
O/S



BLACK



PURPLE MULTI

D1 - BAGS



**UPSHOT TOTE BAG**

\$55 / \$110

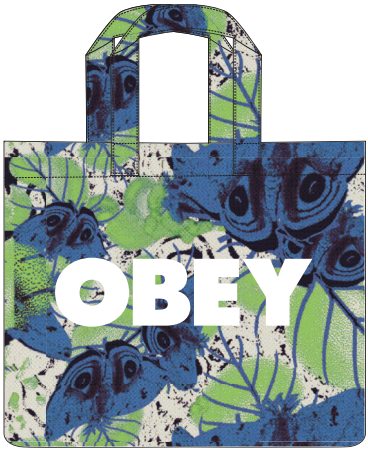
**100010146**

DESCRIPTION: PVC TOTA BAG WITH POPLIN UNDERLAY, INTERIOR POCKET AND SCREENPRINT

CONTENT: 100% COTTON POPLIN

UNBLEACHED MULTI

O/S



UNBLEACHED MULTI

D1 - TOTE BAG

**OBEY EAR BUG**

\$25 / \$50

**100553368**

DESCRIPTION: TOTE BAG

CONTENT: 100% COTTON

NATURAL, BLACK

O/S



NATURAL



BLACK

D1 - TOTE BAG

# SOCKS



TENNIS  
টেনিস মীরবনে  
TRAINING  
2540 8333

Soul Healing Fri 4 Novem

**DRUM & BAS**

From Soulful to Jungle to downrig

Australi  
Funk  
Severit

HK Gosp



Ly  
Dan  
Rog  
B

< 12 F

Three years strong, Soul Healing brings its 3<sup>rd</sup> instal of DNB Smashers for 2011 packed and vibing. With a line up of seasoned selectors, resident gospel-bass's Momoko & Fokuz Recording's emerging liquid funk producer Severit Zero fri under. A night of soulful vibes as well as the harder heavy duty bizness in the

f LGIF 13 Lyndhurst Ten

**COOPER II SOCKS**

**100260093**

DESCRIPTION: CLASSIC ATHLETIC SOCKS WITH CONTRAST STRIPES AND LOGO JACQUARD  
85% COTTON / 13% NYLON / 2% SPANDEX

WHITE / PRINCESS BLUE, WHITE / BLACK, WHITE / PURPLE FLOWER, WHITE / HONEYCOMB  
O/S



WHITE / PRINCESS BLUE



WHITE / BLACK



WHITE / PURPLE FLOWER



WHITE / HONEYCOMB

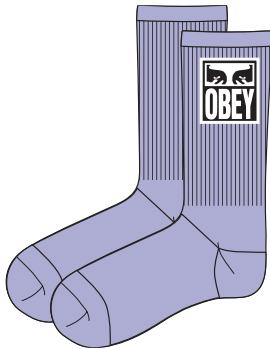
D1 - SOCKS

**OBEY EYES ICON SOCKS**

**100260141**

DESCRIPTION: CLASSIC ATHLETIC SOCKS WITH JAQUARD OBEY LOGO  
85% COTTON / 13% NYLON / 2% SPANDEX

DIGITAL LAVENDER, BLACK, CELERY JUICE, WHITE  
O/S



DIGITAL LAVENDER



BLACK



CELERY JUICE



WHITE

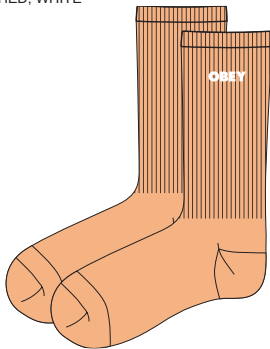
D1 - SOCKS

**OBEY BOLD SOCKS**

**100260144**

DESCRIPTION: CLASSIC ATHLETIC SOCKS WITH OBEY EMBROIDERY  
85% COTTON / 13% NYLON / 2% SPANDEX

PAPAYA SMOOTHIE, BLACK, DIGITAL LAVENDER, UNBLEACHED, WHITE  
O/S



PAPAYA SMOOTHIE



BLACK



DIGITAL LAVENDER



UNBLEACHED



WHITE

D1 - SOCKS

**OBEY WAVY SOCKS**

**100260172**

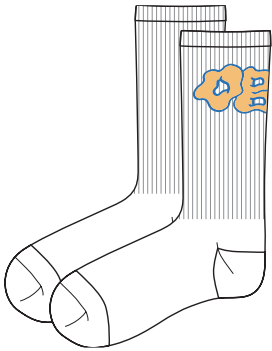
DESCRIPTION: CLASSIC ATHLETIC TUBE SOCKS

85% COTTON / 13% NYLON / 2% SPANDEX

WHITE, GREEN FIG

O/S

\$9 / \$18



WHITE



GREEN FIG

D1 - SOCKS

**OBEY FRUITS SOCKS**

**100260173**

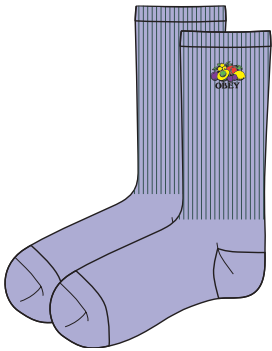
DESCRIPTION: CLASSIC ATHLETIC TUBE SOCKS

85% COTTON 13% NYLON 2% SPANDEX

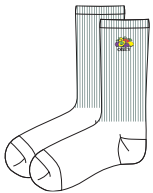
LAVENDER SILK, WHITE

O/S

\$10 / \$20



LAVENDER SILK



WHITE

D1 - SOCKS

**OBEY DOG SOCKS**

**100260174**

DESCRIPTION: CLASSIC ATHLETIC TUBES SOCKS

85% COTTON / 13% NYLON / 2% SPANDEX

SKY BLUE, WHITE

O/S

\$9 / \$18



SKY BLUE



WHITE

D1 - SOCKS

OBEY SPRING FLOWER SOCKS

100260175

DESCRIPTION: CLASSIC ATHLETIC TUBE SOCKS

85% COTTON / 13% NYLON / 2% SPANDEX

UNBLEACHED, VINTAGE PINK

O/S

\$9 / \$18



UNBLEACHED



VINTAGE PINK

D1 - SOCKS



# ACCESSORIES



BIG BOY WEB BELT

100050026

DESCRIPTION: ADJUSTABLE WEB BELT WITH SILVER HARDWARE AND A OBEY EYE LABEL

60% COTTON / 40% POLYESTER

BLACK, UNBLEACHED, LAVENDER SILK

O/S



UNBLEACHED



LAVENDER SILK

BLACK

D1 - ACCESSORIES

OBEY WAVY BELT

100050037

DESCRIPTION: ADJUSTABLE WEB BELT WITH SILVER HARDWARE AND A OBEY EYE LABEL

60% COTTON / 40% POLYESTER

UNBLEACHED MULTI, BLACK MULTI

O/S



BLACK MULTI

UNBLEACHED MULTI

D1 - ACCESSORIES

\$22.50 / \$45

OBEY SNAKE DRESS BELT

100050036

DESCRIPTION: EMBOSSED FAUX SNAKE SKIN PRINT BELT WITH PU BACKING AND ENGRAVED METAL BUCKLE AND END TIP

50% POLYESTER 50% PU

TAN

S/M, L/XL



TAN

D1 - ACCESSORIES



**OBEY ICON AIR FRESHENER**

**100680003**

DESCRIPTION: PRINTED AIR FRESHENER WITH PINE SCENT

100% PAPER

BLACK MULTI

O/S

\$8.50 / \$17

\*PINE SCENT



BLACK MULTI

D1 - ACCESSORIES

**OBEY CHERUBS AIR FRESHENER**

**100680010**

DESCRIPTION: PRINTED AIR FRESHENER WITH PINE SCENT

100% PAPER

BLACK MULTI

O/S

\$8.50 / \$17

\*PINE SCENT



BLACK MULTI

D1 - ACCESSORIES

**OBEY ICON METAL KEYCHAIN**

**100160021**

DESCRIPTION: METAL KEYCHAIN WITH ICON

100% METAL

WHITE

O/S

\$15.50 / \$31



WHITE

D1 - ACCESSORIE

**OBEY ICON DRINKING GLASS**  
**100040000**

DESCRIPTION: DRINKING GLASS WITH PRINT  
100% GLASS  
CLEAR  
O/S

\$19 / \$38



CLEAR

D1 - ACCESSORIES

**OBEY ICON MUG**  
**100630005**

DESCRIPTION: PRINTED ICON MUG  
100% CERAMIC  
WHITE  
O/S

\$22.50 / \$45



WHITE

D1 - ACCESSORIES

**STICKER PACK 5**  
**100270012**

DESCRIPTION: ASSORTED STICKERS FOR THE OBEY FIENDS. SPREAD IT! (STICKERS MAY VARY FROM CATALOG PHOTO)  
ASSORTED  
O/S

\$9 / \$18



ASSORTED

D1 - ACCESSORIES

\$8.50 / \$17

**STICKER PACK 2**

**100270001**

DESCRIPTION: ASSORTED STICKERS FOR THE OBEY FIENDS. SPREAD IT! (STICKERS MAY VARY FROM CATALOG PHOTO)

ASSORTED

O/S



ASSORTED

D1 - ACCESSORIES

**OBEY BOLD**

**326002349**

DESCRIPTION: CORK BLOCK WITH BOLD OBEY PRINT

100% CORK

O/S

\* THIS ITEM IS POP, AND INTENDED TO BE USED IN STORE DISPLAY. NOT FOR RESALE



CORK

D1 - POP

**LARGE ICON FACE FRAMED PRINT**

**326000174**

DESCRIPTION: FRAMED PRINT

ASSORTED

O/S

\* THIS ITEM IS POP, AND INTENDED TO BE USED IN STORE DISPLAY. NOT FOR RESALE



ASSORTED

D1 - POP

# CORE PRINTABLES



ICON EXTRA HEAVY HOOD

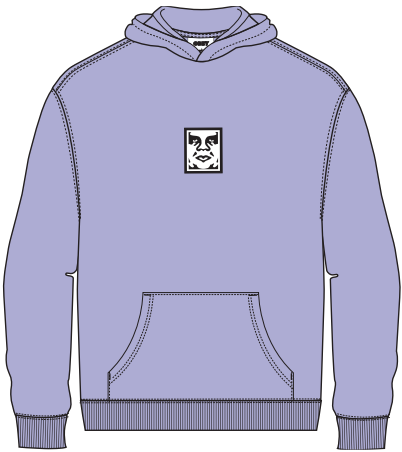
112470148

DESCRIPTION: PREMIUM EXTRA HEAVY WEIGHT HOODED FLEECE WITH EMBROIDERY

70% COTTON 30% POLYESTER

DIGITAL LAVENDER, BLACK, SEPIA

XS S M L XL XXL



DIGITAL LAVENDER



BLACK



SEPIA

D1 - CORE EMBELLISHED FLEECE

ICON EXTRA HEAVY CREW

112480112

DESCRIPTION: PREMIUM EXTRA HEAVY WEIGHT CREWNECK FLEECE WITH EMBROIDERY

70% COTTON 30% POLYESTER

BLACK, SEPIA, DIGITAL LAVENDER

XS S M L XL XXL



BLACK



SEPIA



DIGITAL LAVENDER

D1 - CORE EMBELLISHED FLEECE

ICON PATCH EXTRA HEAVY CREW

\$57.50 / \$115

112480130

DESCRIPTION: PREMIUM EXTRA HEAVY WEIGHT CREWNECK FLEECE WITH EMBROIDERY

70% COTTON 30% POLYESTER

PALM LEAF, BLACK, DIGITAL LAVENDER

XS S M L XL XXL



PALM LEAF



BLACK



DIGITAL LAVENDER

D1 - CORE EMBELLISHED FLEECE

ICON PATCH EXTRA HEAVY HOOD

\$60 / \$120

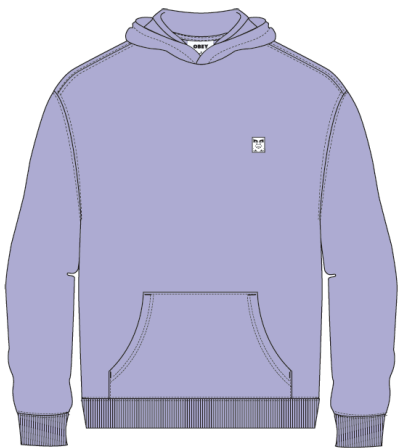
112470184

DESCRIPTION: PREMIUM EXTRA HEAVY WEIGHT HOODED FLEECE WITH EMBROIDERY

70% COTTON 30% POLYESTER

DIGITAL LAVENDER, BLACK, PALM LEAF

XS S M L XL XXL



DIGITAL LAVENDER



BLACK



PALM LEAF

D1 - CORE EMBELLISHED FLEECE

OBEY BOLD HOOD

\$62.50 / \$125

117462349

DESCRIPTION: PREMIUM FRENCH TERRY FLEECE HOOD

CONTENT: 80% COTTON 20% POLYESTER

PALM LEAF, BLACK, DIGITAL LAVENDER, UNBLEACHED

XS S M L XL XXL



PALM LEAF



BLACK



DIGITAL LAVENDER



UNBLEACHED

D1 - CORE PRINTABLES

OBEY BOLD CREW

\$52.50 / \$105

117472349

DESCRIPTION: PREMIUM FRENCH TERRY FLEECE CREW

CONTENT: 80% COTTON 20% POLYESTER

DIGITAL LAVENDER, BLACK, PALM LEAF

XS S M L XL XXL



DIGITAL LAVENDER



BLACK



PALM LEAF

D1 - CORE PRINTABLES



OBEY BOLD ZIP HOOD

\$69 / \$138

117482349

DESCRIPTION: PREMIUM FRENCH TERRY FLEECE ZIP HOOD

CONTENT: 80% COTTON 20% POLYESTER

BLACK, PALM LEAF, ASH GREY

XS S M L XL XXL



BLACK



PALM LEAF



ASH GREY

D1 - CORE PRINTABLES

OBEY BOLD

\$52.50 / \$105

142043045

FIT: RELAXED FIT

DESCRIPTION: SWEATPANT WITH SCREEN PRINT

80% COTTON 20% POLYESTER

PALM LEAF, BLACK, DIGITAL LAVENDER

XS S M L XL XXL



PALM LEAF



BLACK



DIGITAL LAVENDER

D1 - CORE PRINTABLES

OBEY EYES ICON 2 HOOD

\$62.50 / \$125

117462142

DESCRIPTION: PREMIUM FRENCH TERRY FLEECE HOOD

CONTENT: 80% COTTON 20% POLYESTER

SKY BLUE, BLACK, PALM LEAF, SUN DIAL

XS S M L XL XXL



SKY BLUE



BLACK



PALM LEAF



SUN DIAL

D1 - CORE PRINTABLES

OBEY EYES ICON 2 CREW

\$52.50 / \$105

117472142

DESCRIPTION: PREMIUM FRENCH TERRY FLEECE CREW

CONTENT: 80% COTTON 20% POLYESTER

SUN DIAL, BLACK, SKY BLUE

XS S M L XL XXL



SUN DIAL



BLACK



SKY BLUE

D1 - CORE PRINTABLES

OBEY EYES ICON 2 ZIP HOOD

\$70 / \$140

117482142

DESCRIPTION: PREMIUM FRENCH TERRY FLEECE ZIP HOOD

CONTENT: 80% COTTON 20% POLYESTER

BLACK, SKY BLUE, ASH GREY

XS S M L XL XXL



BLACK



SKY BLUE



ASH GREY

D1 - CORE PRINTABLES

ICON HEAVYWEIGHT TEE

\$29 / \$58

166913013

DESCRIPTION: HEAVYWEIGHT BOX FIT T-SHIRT

CONTENT: 100% COTTON

SAGO, OFF BLACK, SILT, SKY BLUE

S M L XL XXL



SAGO



OFF BLACK



SILT



SKY BLUE

D1 - CORE PRINTABLES

OBEY BOLD ICON HEAVYWEIGHT TEE

\$29 / \$58

166913439

DESCRIPTION: HEAVYWEIGHT BOX FIT T-SHIRT

CONTENT: 100% COTTON

PURPLE FLOWER, OFF BLACK, PALM LEAF, WHITE

S M L XL XXL



PURPLE FLOWER



OFF BLACK



PALM LEAF



WHITE

D1 - CORE PRINTABLES

OBEY BOLD 3

\$29 / \$58

166912888

DESCRIPTION: HEAVYWEIGHT BOX FIT T-SHIRT

CONTENT: 100% COTTON

SUN DIAL, OFF BLACK, PALM LEAF, PURPLE FLOWER, SKY BLUE

S M L XL XXL



SUN DIAL



OFF BLACK



PALM LEAF



PURPLE FLOWER



SKY BLUE

D1 - CORE PRINTABLES

OBEY EYES ICON 2

\$29 / \$58

166912142

DESCRIPTION: HEAVYWEIGHT BOX FIT T-SHIRT

CONTENT: 100% COTTON

SKY BLUE, PURPLE FLOWER, OFF BLACK, SILT, PALM LEAF, CELERY JUICE

XS S M L XL XXL



SKY BLUE



PURPLE FLOWER



OFF BLACK



SILT



PALM LEAF



CELERY JUICE

D1 - CORE PRINTABLES

OBEY EYES ICON 2

\$32.50 / \$65

167102142

DESCRIPTION: HEAVYWEIGHT LONGSLEEVE BOX FIT T-SHIRT

CONTENT: 100% COTTON

CELERY JUICE, OFF BLACK, PALM LEAF, SKY BLUE, WHITE

S M L XL XXL



CELERY JUICE



OFF BLACK



PALM LEAF



SKY BLUE



WHITE

D1 - CORE PRINTABLES

OBEY EYES ICON 2

\$22.50 / \$45

165262142

DESCRIPTION: CLASSIC FIT T-SHIRT

CONTENT: 100% COTTON

BLACK, DIGITAL VIOLET, CUCUMBER, CITRUS

S M L XL XXL



BLACK



DIGITAL VIOLET



CUCUMBER



CITRUS

D1 - CORE PRINTABLES

OBEY LOWER CASE 2

\$22.50 / \$45

165263411

DESCRIPTION: CLASSIC FIT T-SHIRT

CONTENT: 100% COTTON

FOREST GREEN, BLACK, SILT, DIGITAL VIOLET

S M L XL XXL



FOREST GREEN



BLACK



SILT



DIGITAL VIOLET

D1 - CORE PRINTABLES

BOLD OBEY 2

\$22.50 / \$45

165263016

DESCRIPTION: CLASSIC FIT T-SHIRT

CONTENT: 100% COTTON

DIGITAL VIOLET, BLACK, SAND, WHITE

S M L XL XXL



DIGITAL VIOLET



BLACK



SAND

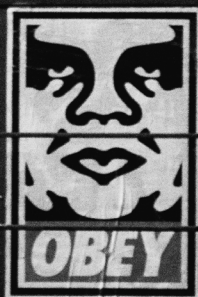


WHITE

D1 - CORE PRINTABLES



# **DELIVERY ONE**



# LIFESTYLE PRINTABLES

OBEY MODERN

117463196

DESCRIPTION: PREMIUM FRENCH TERRY FLEECE HOOD

CONTENT: 80% COTTON 20% POLYESTER

DIGITAL LAVENDER, SAGO

S M L XL XXL

\$65 / \$130



SAGO

DIGITAL LAVEDNER

D1 - PREMIUM FRENCH TERRY FLEECE HOOD

OBEY WORLDWIDE EYES

117463364

DESCRIPTION: PREMIUM FRENCH TERRY FLEECE HOOD

CONTENT: 80% COTTON 20% POLYESTER

BLACK, PALM LEAF

S M L XL XXL

\$65 / \$130



PALM LEAF

BLACK

D1 - PREMIUM FRENCH TERRY FLEECE HOOD

OBEY GARDEN FAIRY

117463369

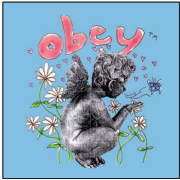
DESCRIPTION: PREMIUM FRENCH TERRY FLEECE HOOD

CONTENT: 80% COTTON 20% POLYESTER

SEPIA, SKY BLUE

S M L XL XXL

\$65 / \$130



SKY BLUE

SEPIA

D1 - PREMIUM FRENCH TERRY FLEECE HOOD

OBEY EAR BUG

117463368

DESCRIPTION: PREMIUM FRENCH TERRY FLEECE HOOD

CONTENT: 80% COTTON 20% POLYESTER

PALM LEAF, SUN DIAL

S M L XL XXL

\$65 / \$130



SUN DIAL

PALM LEAF

D1 - PREMIUM FRENCH TERRY FLEECE HOOD

OBEY DONKEY

\$55 / \$110

117473367

DESCRIPTION: PREMIUM FRENCH TERRY FLEECE CREW

CONTENT: 80% COTTON 20% POLYESTER

PALM LEAF, BLACK

S M L XL XXL



BLACK

PALM LEAF

D1 - PREMIUM FRENCH TERRY FLEECE CREW

OBEY JUNGLE DOODLES

\$55 / \$110

117473370

DESCRIPTION: PREMIUM FRENCH TERRY FLEECE CREW

CONTENT: 80% COTTON 20% POLYESTER

DIGITAL LAVENDER, UNBLEACHED

S M L XL XXL



UNBLEACHED

DIGITAL LAVENDER

D1 - PREMIUM FRENCH TERRY FLEECE CREW

OBEY HALF FACE ICON

\$22.50 / \$45

165263357

DESCRIPTION: CLASSIC FIT T-SHIRT

CONTENT: 100% COTTON

BLACK, GOOD GREY, WHITE

S M L XL XXL



GOOD GREY



WHITE

BLACK

D1 - CLASSIC TEE

OBEY WORLDWIDE EYES

\$22.50 / \$45

165263364

DESCRIPTION: CLASSIC FIT T-SHIRT

CONTENT: 100% COTTON

WHITE, BLACK, DIGITAL VIOLET

S M L XL XXL



BLACK



DIGITAL VIOLET

WHITE

D1 - CLASSIC TEE

OBEY TAG

\$22.50 / \$45

165263358

DESCRIPTION: CLASSIC FIT T-SHIRT

CONTENT: 100% COTTON

BROWN SUGAR, BLACK, DIGITAL VIOLET

S M L XL XXL



BROWN SUGAR



BLACK



DIGITAL VIOLET

D1 - CLASSIC TEE

OBEY HOUND

\$22.50 / \$45

165263359

DESCRIPTION: CLASSIC FIT T-SHIRT

CONTENT: 100% COTTON

DIGITAL VIOLET, BROWN SUGAR, WHITE

S M L XL XXL



DIGITAL VIOLET



BROWN SUGAR



WHITE

D1 - CLASSIC TEE



OBEY APPLE WORM

\$22.50 / \$45

165263360

DESCRIPTION: CLASSIC FIT T-SHIRT

CONTENT: 100% COTTON

CITRUS, FOREST GREEN, WHITE

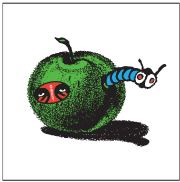
S M L XL XXL



CITRUS



FOREST GREEN



WHITE

D1 - CLASSIC TEE

OBEY SPRING BIRDS

\$22.50 / \$45

165263361

DESCRIPTION: CLASSIC FIT T-SHIRT

CONTENT: 100% COTTON

WHITE, BLACK, CITRUS

S M L XL XXL



WHITE



BLACK



CITRUS

D1 - CLASSIC TEE

OBEY REVENGE

\$22.50 / \$45

165263363

DESCRIPTION: CLASSIC FIT T-SHIRT

CONTENT: 100% COTTON

GOOD GREY, BLACK, SAND

S M L XL XXL



GOOD GREY



BLACK



SAND

D1 - CLASSIC TEE

YOUR FUTURE IS UNWRITTEN

\$22.50 / \$45

165263362

DESCRIPTION: CLASSIC FIT T-SHIRT

CONTENT: 100% COTTON

SILT, BLACK, SAND

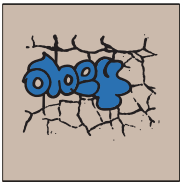
S M L XL XXL



SILT



BLACK



SAND

D1 - CLASSIC TEE

OBEY CHERUBS

\$29 / \$58

166913365

DESCRIPTION: HEAVYWEIGHT BOX FIT T-SHIRT

CONTENT: 100% COTTON

SILT, SKY BLUE, WHITE

S M L XL XXL



SILT



SKY BLUE



WHITE

D1 - HEAVYWEIGHT TEE

OBEY THE WORLD IS YOURS

\$29 / \$58

166913366

DESCRIPTION: HEAVYWEIGHT BOX FIT T-SHIRT

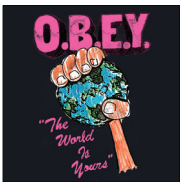
CONTENT: 100% COTTON

WHITE, OFF BLACK, CELERY JUICE

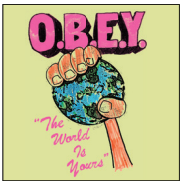
S M L XL XXL



WHITE



OFF BLACK



CELERY JUICE

D1 - HEAVYWEIGHT TEE

OBEY DONKEY

\$29 / \$58

166913367

DESCRIPTION: HEAVYWEIGHT BOX FIT T-SHIRT

CONTENT: 100% COTTON

OFF BLACK, PALM LEAF, WHITE

S M L XL XXL



OFF BLACK



PALM LEAF



WHITE

D1 - HEAVYWEIGHT TEE

OBEY EAR BUG

\$29 / \$58

166913368

DESCRIPTION: HEAVYWEIGHT BOX FIT T-SHIRT

CONTENT: 100% COTTON

SUN DIAL, SKY BLUE, WHITE

S M L XL XXL



SUN DIAL



SKY BLUE



WHITE

D1 - HEAVYWEIGHT TEE

OBEY GARDEN FAIRY

\$29 / \$58

166913369

DESCRIPTION: HEAVYWEIGHT BOX FIT T-SHIRT

CONTENT: 100% COTTON

PALM LEAF, OFF BLACK, SAGO

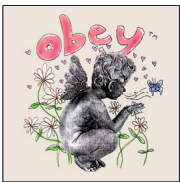
S M L XL XXL



PALM LEAF



OFF BLACK



SAGO

D1 - HEAVYWEIGHT TEE

OBEY JUNGLES DOODLES

\$29 / \$58

166913370

DESCRIPTION: HEAVYWEIGHT BOX FIT T-SHIRT

CONTENT: 100% COTTON

CELERY JUICE, SILT, SAGO

S M L XL XXL



CELERY JUICE



SILT



SAGO

D1 - HEAVYWEIGHT TEE

OBEY WORLDWIDE EYES

\$35 / \$70

167103364

DESCRIPTION: HEAVYWEIGHT LONG SLEEVE BOX FIT T-SHIRT

CONTENT: 100% COTTON

PURPLE FLOWER, BLACK, WHITE

S M L XL XXL



PURPLE FLOWER



BLACK



WHITE

D1 - HEAVYWEIGHT LONG SLEEVE TEE

OBEY CHERUBS

\$35 / \$70

167103365

DESCRIPTION: HEAVYWEIGHT LONG SLEEVE BOX FIT T-SHIRT

CONTENT: 100% COTTON

SKY BLUE, PALM LEAF, WHITE

S M L XL XXL



SKY BLUE



PALM LEAF



WHITE

D1 - HEAVYWEIGHT LONG SLEEVE TEE



am  
上午 7  
pm  
下午



**SUSTAINABLE  
PRINTABLES**



JAGGED OBEY

\$30 / \$60

163003372

DESCRIPTION: ORGANIC TEE

CONTENT: 100% ORGANIC COTTON

CELERY JUICE, TERRACOTTA, PAPAYA SMOOTHIE

S M L XL XXL



CELERY JUICE



TERRACOTTA



PAPAYA SMOOTHIE

D1 - ORGANIC TEE

ELEMENTS

\$30 / \$60

163003374

DESCRIPTION: ORGANIC TEE

CONTENT: 100% ORGANIC COTTON

PAPAYA SMOOTHIE, TERRACOTTA, CELERY JUICE

S M L XL XXL



PAPAYA SMOOTHIE



TERRACOTTA



CELERY JUICE

D1 - ORGANIC TEE

OBEY PEACE FLOWER

\$30 / \$60

163003412

DESCRIPTION: ORGANIC TEE

CONTENT: 100% ORGANIC COTTON

PALM LEAF, FADED BLACK, TERRACOTTA

S M L XL XXL



PALM LEAF



FADED BLACK



TERRACOTTA

D1 - ORGANIC TEE

OBEY PROTECT OUR MOTHER EARTH

\$30 / \$60

163003413

DESCRIPTION: ORGANIC TEE

CONTENT: 100% ORGANIC COTTON

TRANQUIL BLUE, PALM LEAF, SAGO

S M L XL XXL



TRANQUIL BLUE



PALM LEAF

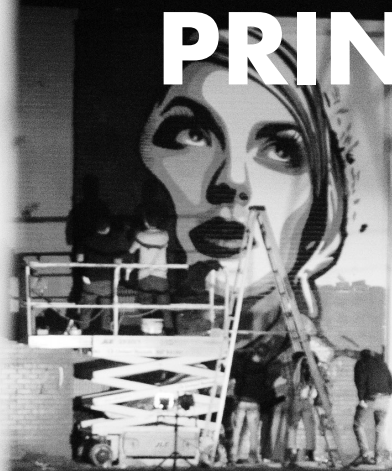


SAGO

D1 - ORGANIC TEE

# **DELIVERY TWO**

# LIFESTYLE PRINTABLES



OBEY MODERN

\$22.50 / \$45

165263196

DESCRIPTION: CLASSIC FIT T-SHIRT

CONTENT: 100% COTTON

GOOD GREY, BLACK, WHITE

S M L XL XXL



GOOD GREY



BLACK



WHITE

D2 - CLASSIC TEE

HOUSE OF OBEY FLOWER

\$22.50 / \$45

165263414

DESCRIPTION: CLASSIC FIT T-SHIRT

CONTENT: 100% COTTON

WHITE, BLACK, DIGITAL VIOLET

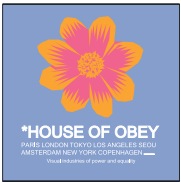
S M L XL XXL



WHITE



BLACK



DIGITAL VIOLET

D2 - CLASSIC TEE

OBEY VISUAL DESIGN STUDIO

\$22.50 / \$45

165263415

DESCRIPTION: CLASSIC FIT T-SHIRT

CONTENT: 100% COTTON

SAND, BLACK, WHITE

S M L XL XXL



SAND



BLACK



WHITE

D2 - CLASSIC TEE

OBEY BOWL OF FRUIT

\$22.50 / \$45

165263416

DESCRIPTION: CLASSIC FIT T-SHIRT

CONTENT: 100% COTTON

CITRUS, CUCUMBER, WHITE

S M L XL XXL



CITRUS



CUCUMBER



WHITE

D2 - CLASSIC TEE

OBEY LEAP FROG

\$22.50 / \$45

165263417

DESCRIPTION: CLASSIC FIT T-SHIRT

CONTENT: 100% COTTON

DIGITAL VIOLET, FOREST GREEN, WHITE

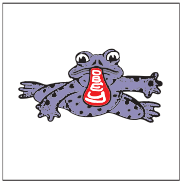
S M L XL XXL



DIGITAL VIOLET



FOREST GREEN



WHITE

D2 - CLASSIC TEE

OBEY FLOWER FRAME

\$22.50 / \$45

165263418

DESCRIPTION: CLASSIC FIT T-SHIRT

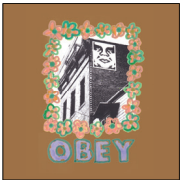
CONTENT: 100% COTTON

WHITE, BROWN SUGAR, CUCUMBER

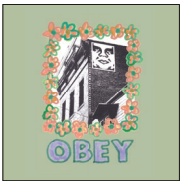
S M L XL XXL



WHITE



BROWN SUGAR



CUCUMBER

D2 - CLASSIC TEE



ANTOINETTE

\$22.50 / \$45

165263419

DESCRIPTION: CLASSIC FIT T-SHIRT

CONTENT: 100% COTTON

CREAM, BLACK, WHITE

S M L XL XXL



CREAM



BLACK



WHITE

D2 - CLASSIC TEE

OBEY CAT & CAMEL

\$22.50 / \$45

165263420

DESCRIPTION: CLASSIC FIT T-SHIRT

CONTENT: 100% COTTON

BLACK, CREAM, DIGITAL VIOLET

S M L XL XXL



BLACK



CREAM



DIGITAL VIOLET

D2 - CLASSIC TEE

ICON OF OBEY

\$29 / \$58

166913421

DESCRIPTION: HEAVYWEIGHT BOX FIT T-SHIRT

CONTENT: 100% COTTON

SILT, OFF BLACK, WHITE

S M L XL XXL



SILT



OFF BLACK



WHITE

D2 - HEAVYWEIGHT TEE

OBEY HAUS MUSICK

\$29 / \$58

166913422

DESCRIPTION: HEAVYWEIGHT BOX FIT T-SHIRT

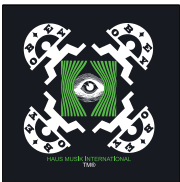
CONTENT: 100% COTTON

PURPLE FLOWER, OFF BLACK, WHITE

S M L XL XXL



PURPLE FLOWER



OFF BLACK



WHITE

D2 - HEAVYWEIGHT TEE

OBEY TRIBAL BUTTERFLY

\$29 / \$58

166913423

DESCRIPTION: HEAVYWEIGHT BOX FIT T-SHIRT

CONTENT: 100% COTTON

SKY BLUE, OFF BLACK, SAGO

S M L XL XXL



SKY BLUE



OFF BLACK



SAGO

D2 - HEAVYWEIGHT TEE

OBEY HEAVY SOUND

\$29 / \$58

166913424

DESCRIPTION: HEAVYWEIGHT BOX FIT T-SHIRT

CONTENT: 100% COTTON

SILT, OFF BLACK, WHITE

S M L XL XXL



SILT



OFF BLACK



WHITE

D2 - HEAVYWEIGHT TEE

OBEY CLAY DUCK

\$29 / \$58

166913425

DESCRIPTION: HEAVYWEIGHT BOX FIT T-SHIRT

CONTENT: 100% COTTON

PALM LEAF, PURPLE FLOWER, WHITE

S M L XL XXL



PALM LEAF



PURPLE FLOWER



WHITE

D2 - HEAVYWEIGHT TEE

OBEY EYES DOVE

\$29 / \$58

166913426

DESCRIPTION: HEAVYWEIGHT BOX FIT T-SHIRT

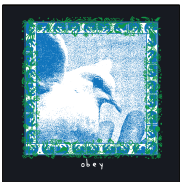
CONTENT: 100% COTTON

SAGO, OFF BLACK, WHITE

S M L XL XXL



SAGO



OFF BLACK



WHITE

D2 - HEAVYWEIGHT TEE

OBEY HAUS MUSICK

\$35 / \$70

167103422

DESCRIPTION: HEAVYWEIGHT LONG SLEEVE BOX FIT T-SHIRT

CONTENT: 100% COTTON

SAGO, OFF BLACK, SUN DIAL

S M L XL XXL



SAGO



OFF BLACK



SUN DIAL

D2 - HEAVYWEIGHT LONG SLEEVE TEE

OBEY HEAVY SOUND

\$35 / \$70

167103424

DESCRIPTION: HEAVYWEIGHT LONG SLEEVE BOX FIT T-SHIRT

CONTENT: 100% COTTON

PALM LEAF, OFF BLACK, PURPLE FLOWER

S M L XL XXL



PALM LEAF



OFF BLACK



PURPLE FLOWER

D2 - HEAVYWEIGHT LONG SLEEVE TEE





# **SUSTAINABLE PRINTABLES**

OBEY DOT

\$30 / \$60

163003427

DESCRIPTION: ORGANIC TEE

CONTENT: 100% ORGANIC COTTON

PALM LEAF, CELERY JUICE, SAGO

S M L XL XXL



PALM LEAF



CELERY JUICE



SAGO

D2 - ORGANIC TEE

OBEY PETAL

\$30 / \$60

163003428

DESCRIPTION: ORGANIC TEE

CONTENT: 100% ORGANIC COTTON

PAPAYA SMOOTHIE, TERRACOTTA, CELERY JUICE

S M L XL XXL



PAPAYA SMOOTHIE



TERRACOTTA



CELERY JUICE

D2 - ORGANIC TEE



OBEY LIFELINE

\$30 / \$60

163003429

DESCRIPTION: ORGANIC TEE

CONTENT: 100% ORGANIC COTTON

SAGO, TERRACOTTA, TRANQUIL BLUE

S M L XL XXL



TERRACOTTA



TRANQUIL BLUE

SAGO

D2 - ORGANIC TEE

OBEY VISUAL CONSPIRACIES

\$30 / \$60

163003430

DESCRIPTION: ORGANIC TEE

CONTENT: 100% ORGANIC COTTON

TERRACOTTA, FADED BLACK, PALM LEAF

S M L XL XXL



FADED BLACK



PALM LEAF

TERRACOTTA

D2 - ORGANIC TEE