



OBHEY

HOLIDAY 2021
WOMENS COLLECTION

THE OBEY CAMPAIGN CAN BE EXPLAINED AS AN EXPERIMENT IN PHENOMENOLOGY. THE FIRST AIM OF PHENOMENOLOGY IS TO REAWAKEN A SENSE OF WONDER ABOUT ONE'S ENVIRONMENT. THE OBEY CAMPAIGN ATTEMPTS TO STIMULATE CURIOSITY AND BRING PEOPLE TO QUESTION BOTH THE CAMPAIGN AND THEIR RELATIONSHIP WITH THEIR SURROUNDINGS. BECAUSE PEOPLE ARE NOT USED TO SEEING ADVERTISEMENTS OR PROPAGANDA FOR WHICH THE MOTIVE IS NOT OBVIOUS, FREQUENT AND NOVEL ENCOUNTERS WITH OBEY PROPAGANDA PROVOKE THOUGHT AND POSSIBLE FRUSTRATION, NEVERTHELESS REVITALIZING THE VIEWER'S PERCEPTION AND ATTENTION TO DETAIL. TO CATALYZE A THOUGHTFUL DIALOGUE DECONSTRUCTING THE PROCESS OF IMAGE ABSORPTION IS THE ULTIMATE GOAL. ALL IN THE NAME OF FUN AND OBSERVATION.

THE MEDIUM IS THE MESSAGE.



17462 VON KARMAN AVE.
IRVINE, CA 92614
U.S.A.
PHONE 949.596.8400 / FAX 949.596.8437
WWW.OBEYCLOTHING.COM
WWW.OBEYGIANT.COM

TABLE OF CONTENTS

HOLIDAY 2021

7
SHEPARD FAIREY COLLECTION

15
JACKETS

19
SWEATERS

24
TOPS

27
SPECIALTY FLEECE

33
DRESSES / BOTTOMS

45
UNISEX

61
ACCESSORIES

73
PRINTABLES

OBEY[®] IDEALS

SUSTAINABLE - ORGANIC - RESPONSIBLE

Look for these icons on select clothing in store and online.
They represent conscious approaches to our production process and are important to the OBEY ethos.



This icon indicates that this garment is constructed with organic cotton. Certified organic cotton following strict regulations without the use of GMO's, harmful pesticides, or synthetic fertilizers.



This icon indicates that this garment is constructed sustainably. More than just sustainable raw materials, we consider the social, environmental, and economic impact of it's production.

Reduce, Reuse, Recycle!



Fair Trade USA's Fair Trade Certified™ label empowers you, the consumer, with the knowledge that your purchase has a positive impact on the people who sew and grow the products you love.

For every OBEY Fair Trade Certified™ product sold, a percentage is paid directly to a special fund for the workers that create our goods. They decide collectively how to spend these funds based on their communities greatest needs: from scholarships and school buses, to medical care and disaster relief services.

BUY FAIR.



BE FAIR.

FAIR TRADE





Fair Trade is a market-based approach that empowers factory workers and farmers to fight poverty, produce quality products, protect the environment and build strong thriving communities for generations to come. At the same time, Fair Trade USA's Fair Trade Certified™ label empowers you, the consumer, with the knowledge that your purchase has a positive impact on the people who sew and grow the products you love. For every OBEY Fair Trade Certified™ product sold, a percentage is paid directly to a special fund for the workers that create our goods. They decide collectively how to spend these funds based on the community's greatest needs: from scholarships and school buses, to medical care and disaster relief services.

"Social responsibility and justice have always been very important to OBEY in both message and practice. We work with manufacturers that provide a fair wage and ethical working conditions, and have now made the further step to become an official Fair Trade USA partner (www.FairTradeusa.org). Our Fair Trade Certified™ garments are produced in factories that operate against rigorous social, environmental and economic standards, where workers can do their jobs with pride and dignity. For every Fair Trade Certified product sold, workers earn more money to fight poverty and fund community development. Our hope is not only to benefit the workers of the Fair Trade factories, but to lead by example and promote the expansion of the Fair Trade apparel program."

- Shepard Fairey



SHEPARD FAIREY

ARTIST - ACTIVIST

Shepard Fairey, founder of OBEY and OBEY Clothing, was born in Charleston, South Carolina. He received his Bachelor of Fine Arts in Illustration at the Rhode Island School of Design in Providence, Rhode Island. In 1989 he created the “Andre the Giant has a Posse” sticker that transformed into the OBEY GIANT art campaign, with imagery that has changed the way people see art and the urban landscape. After 29 years, his work has evolved into an acclaimed body of art, which includes the 2008 “Hope” portrait of Barack Obama, found at the Smithsonian’s National Portrait Gallery. The artist collaborated with Amplifier in 2017 to create the We The People series recognizable during the Women’s Marches and other rallies around the world in defense of national and global social justice issues.

Fairey’s stickers, guerilla street art presence, and 85 plus public murals are recognizable worldwide. His works are in the permanent collections of the Museum of Modern Art (MoMA), the Victoria and Albert Museum, the Smithsonian’s National Portrait Gallery, the Boston Institute of Contemporary Art, the San Francisco Museum of Modern Art, and many others.

Fairey’s distinct and recognizable style is unique to him and to OBEY. His lifestyle is the catalyst for all the brand does and the center point of influence and inspiration. This section isolates his work, from his classic graphic style to fine art renderings on garments. Each season, Shepard tackles new ideas and adds his special touch that makes OBEY what it is.

We hope you enjoy.

OBEY NOVEL 4

263502017

DESCRIPTION: ORGANIC LIGHTWEIGHT T-SHIRT

CONTENT: 100% ORGANIC COTTON

OFF BLACK, COPPER COIN, SAGO

XS S M L XL



OFF BLACK



COPPER COIN



SAGO

D1 - ORGANIC VINTAGE TEE

OBEY AK-47 LOTUS

263502077

DESCRIPTION: ORGANIC LIGHTWEIGHT T-SHIRT

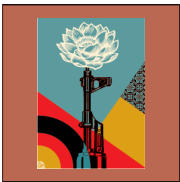
CONTENT: 100% ORGANIC COTTON

VINTAGE BLUE, COPPER COIN, WHITE

XS S M L XL



VINTAGE BLUE



COPPER COIN



WHITE

D1 - ORGANIC VINTAGE TEE

OBEY AFTER HOURS

263502070

DESCRIPTION: ORGANIC LIGHTWEIGHT T-SHIRT

CONTENT: 100% ORGANIC COTTON

COPPER COIN, OFF BLACK, VINTAGE BLUE

XS S M L XL



COPPER COIN



OFF BLACK



VINTAGE BLUE

D1 - ORGANIC VINTAGE TEE

OBEY SAND DIEGO ICON

263502071

DESCRIPTION: ORGANIC LIGHTWEIGHT T-SHIRT

CONTENT: 100% ORGANIC COTTON

SAGO, OFF BLACK, VINTAGE BLUE

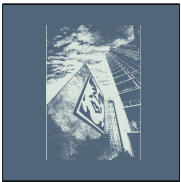
XS S M L XL



SAGO



OFF BLACK



VINTAGE BLUE

D1 - ORGANIC VINTAGE TEE

OBEY FLOWER RUBIES

263502072

DESCRIPTION: ORGANIC LIGHTWEIGHT T-SHIRT

CONTENT: 100% ORGANIC COTTON

OFF BLACK, DESERT SUN, WHITE

XS S M L XL



OFF BLACK



DESERT SUN



WHITE

D1 - ORGANIC VINTAGE TEE

OBEY RAISE THE LEVEL

263502021

DESCRIPTION: ORGANIC LIGHTWEIGHT T-SHIRT

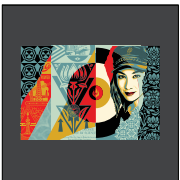
CONTENT: 100% ORGANIC COTTON

WHITE, OFF BLACK, VINTAGE BLUE

XS S M L XL



WHITE



OFF BLACK



VINTAGE BLUE

D1 - ORGANIC VINTAGE TEE

OBEY MILITANT PEACE 2

267292073

DESCRIPTION: RECYCLED T-SHIRT MADE FROM RECYCLED YARNS

CONTENT: 58% RECYCLED COTTON 42% RECYCLED POLY

TEAL, BLACK, WHITE

XS S M L XL



TEAL



BLACK



WHITE

D1 - SUSTAINABLE TEES

OBEY HIGH COST OF FREE SPEECH

267292074

DESCRIPTION: RECYCLED T-SHIRT MADE FROM RECYCLED YARNS

CONTENT: 58% RECYCLED COTTON 42% RECYCLED POLY

WHITE, BLACK, RED

XS S M L XL



WHITE



BLACK



RED

D1 - SUSTAINABLE TEES

OBEY SAN DIEGO ICON 2

267292075

DESCRIPTION: RECYCLED T-SHIRT MADE FROM RECYCLED YARNS

CONTENT: 58% RECYCLED COTTON 42% RECYCLED POLY

RED, BLACK, CREAM

XS S M L XL



RED



BLACK



CREAM

D1 - SUSTAINABLE TEES

OBEY NOIR WOMAN ALBUM COVER

267292076

DESCRIPTION: RECYCLED T-SHIRT MADE FROM RECYCLED YARNS

CONTENT: 58% RECYCLED COTTON 42% RECYCLED POLY

BLACK, TEAL

XS S M L XL



BLACK



TEAL

D1 - SUSTAINABLE TEES

ICON STICKER PACK 2

100270001

DESCRIPTION: ASSORTED STICKERS FOR THE OBEY FIENDS. SPREAD IT!

ASSORTED

O/S



ASSORTED

D1 - ESSENTIALS

COVERT TO OVERT BOOK

326000035M

DESCRIPTION: COVERT TO OVERT SHOWCASES SHEPARD FAIREY'S EVOLUTION FROM WORKS ON PAPER TO GRANDER ART INSTALLATIONS, CROSS-CULTURAL WORKS, AND MUSIC/ART COLLABORATIONS

ASSORTED

O/S



BLACK

D1 - ESSENTIALS



JACKETS



MATARAZZO FAM
Now Enro
17-338-
Infants
Toddlers
Pre-School
Pre-Kindergarten
Full Day and Part Day
Beautifully Designed Europe
WWW.MATARAZZOFAM

TILED LINER JACKET

221800383

FIT: REGULAR FIT

DESCRIPTION: QUILTED LINER JACKET WITH OBEY LABEL

100% POLYESTER

BLACK MULTI, GREY MULTI

XS S M L XL



*REVERSIBLE



*REVERSIBLE

BLACK MULTI

GREY MULTI

D1 - JACKETS

MARINO SHERPA JACKET

221800384

FIT: REGULAR FIT

DESCRIPTION: REVERSIBLE INTARSIA SHERPA JACKET WITH OBEY LABEL

100% POLYESTER

UNBLEACHED MULTI, BLACK MULTI

XS S M L XL



*REVERSIBLE



*REVERSIBLE

UNBLEACHED MULTI

BLACK MULTI

D1 - JACKETS

BARI PUFFER JACKET

221800382

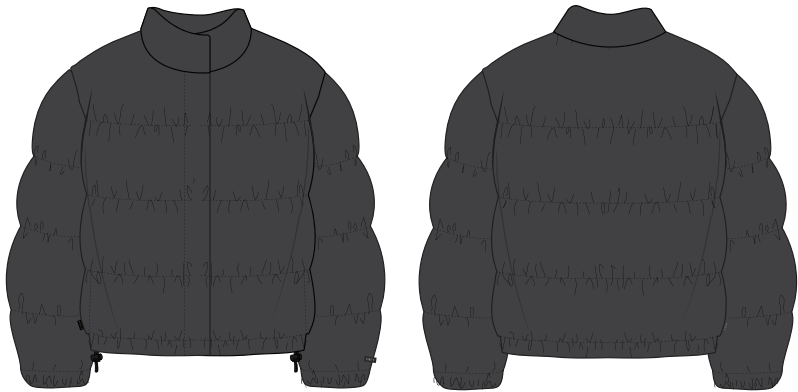
FIT: REGULAR FIT

DESCRIPTION: VELVET MICRO PUFFER WITH OBEY LABEL

100% POLYESTER / LINING: 100% POLYESTER

BLACK

XS S M L XL



BLACK

D1 - JACKETS

EMILE JACKET

221800380

DESCRIPTION: BRUSHED LONG FLANNEL JACKET

77% POLYESTER 11% WOOL 9% ACRYLIC 2% NYLON 1% VISCOSE

BLUE MULTI

XS S M L XL



BLUE MULTI

D1 - JACKETS

JELENA OVERCOAT

221800386

FIT: REGULAR FIT

DESCRIPTION: LONG DRIVER COAT IN PATCHWORK

90% POLYESTER 10% WOOL

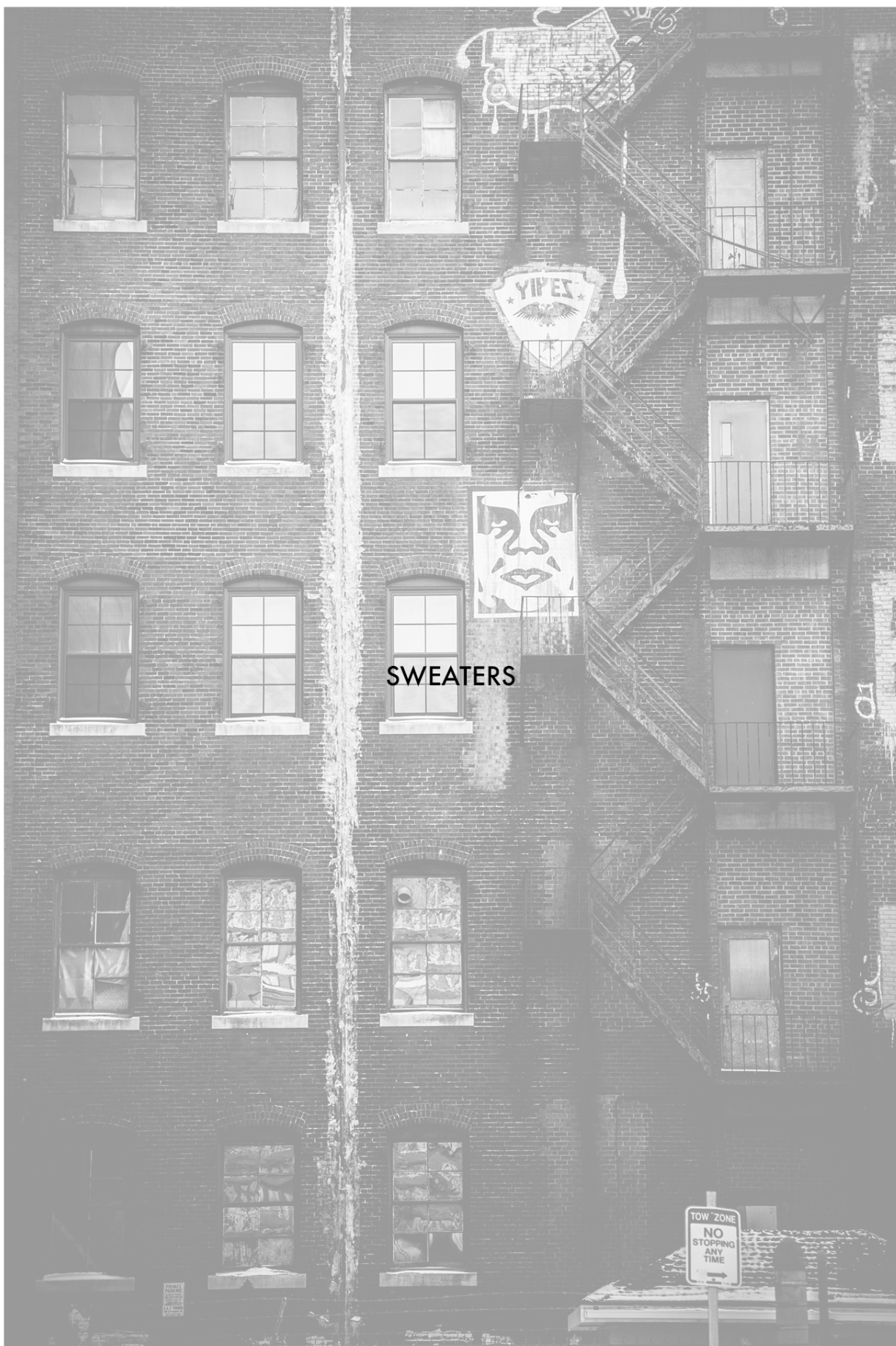
GREY MULTI

XS S M L XL



GREY MULTI

D1 - JACKETS



SWEATERS

TOW ZONE
NO
STOPPING
ANY
TIME
→

MOWA SWEATER

251000101

FIT: REGULAR FIT

DESCRIPTION: CREWNECK SWEATER

50% ACRYLIC 25% NYLON 20% WOOL 5% ALPAGA

COPPER COIN MULTI, BLACK MULTI

XS S M L XL



COPPER COIN MULTI



BLACK MULTI

D1 - SWEATERS

ROBYN SWEATER

251000100

DESCRIPTION: TEXTURED CREW SWEATER

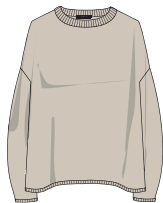
50% ACRYLIC 25% NYLON 20% WOOL 5% ALPAGA

HOT SAUCE, TAN

XS S M L XL



HOT SAUCE



TAN

D1 - SWEATERS

HEX CARDIGAN

251010057

FIT: REGULAR FIT

DESCRIPTION: CARDIGAN

100% ACRYLIC

BLACK MULTI, PEACH MULTI

XS S M L XL



BLACK MULTI



PEACH MULTI

D1 - SWEATERS

ZOEY CARDIGAN

251010056

DESCRIPTION: BRUSHED PATTERN CARDIGAN

100% ACRYLIC

BROWN MULTI, WHITE MULTI

XS S M L XL



BROWN MULTI



WHITE MULTI

D1 - SWEATERS

RHYTHM SWEATER

251000102

FIT: REGULAR FIT

DESCRIPTION: CREWNECK SWEATER

100% ACRYLIC

LEAF MULTI, GINGER MULTI

XS S M L XL



GINGER MULTI

LEAF MULTI

D1 - SWEATERS

AMA CARDIGAN

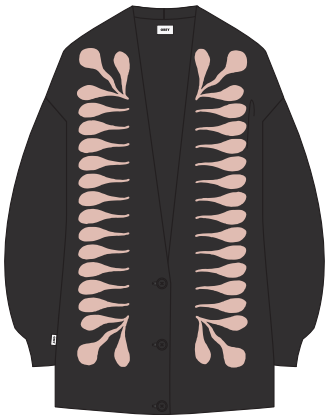
251010055

DESCRIPTION: OVERSIZED CARDIGAN WITH JACQUARD ART

80% ACRYLIC 20% WOOL

BLACK MULTI, SILVER GREY MULTI

XS S M L XL



SILVER GREY MULTI

BLACK MULTI

D1 - SWEATERS

LOLA SWEATER

251010058

FIT: REGULAR FIT

DESCRIPTION: PLAID CARDIGAN SWEATER

50% ACRYLIC 25% NYLON 20% WOOL 5% ALPAGA

GINGER MULTI

XS S M L XL



GINGER MULTI

D1 - SWEATERS



TOPS

Metro Rail

40

PATSAOURAS
TRANSIT PLAZA
NEXT EXIT

FREQUENCY TEE LS

231030110

FIT: SMALL FIT

DESCRIPTION: FITTED LS TOP WITH EMBROIDERY

95% COTTON / 5% SPANDEX

LEAF MULTI, BLACK MULTI

XS S M L XL



LEAF MULTI



BLACK MULTI

D1 - TOPS

BRODY TOP

231080126

DESCRIPTION: CROPPED SS STRIPED SHIRT WITH OBEY PRINT

100% ORGANIC COTTON

LEAF MULTI, KHAKI MULTI

XS S M L XL



LEAF MULTI



KHAKI MULTI

D1 - TOPS

ECHO POLO

231040005

FIT: SMALL FIT

DESCRIPTION: CROP JACQUARD RUGBY WITH OBEY EMBROIDERY

100% ORGANIC COTTON

PUTTY PINK MULTI, UNBLEACHED MULTI

XS S M L XL



UNBLEACHED MULTI

PUTTY PINK MULTI

D1 - TOPS

CAMILLE FLANNEL SHIRT

281200110

DESCRIPTION: HEAVYWEIGHT CROPPED PLAID FLANNEL

100% COTTON

BROWN MULTI, SAGO MULTI

XS S M L XL



SAGO MULTI

BROWN MULTI

D1 - TOPS



SIGNAL POLAR FLEECE HOOD

211610101

FIT: RELAXED FIT

DESCRIPTION: POLAR FLEECE HOODED SWEATSHIRT

100% POLYESTER

WHITE MULTI, NAVY MULTI

XS S M L XL



WHITE MULTI



NAVY MULTI

D1 - SPECIALTY FLEECE

WOODBERRY COLLARD SWEATSHIRT

211600138

FIT: REGULAR FIT

DESCRIPTION: POLO COLLAR CREW NECK SWEATSHIRT

100% ORGANIC COTTON

ASH GREY MULTI, BLACK MULTI

XS S M L XL



ASH GREY MULTI



BLACK MULTI

D1 - SPECIALTY FLEECE

ECHO JACQUARD CREW

211600137

FIT: CROPPED FIT

DESCRIPTION: CREW NECK SWEATSHIRT WITH JACQUARD RIB

100% ORGANIC COTTON

IVY, COPPER COIN

XS S M L XL



IVY



COPPER COIN

D1 - SPECIALTY FLEECE

OBEY LADY CREW

211600140

FIT: CROPPED FIT

DESCRIPTION: CROPPED CREW NECK SWEATSHIRT WITH EMBROIDERY

58% COTTON 42% POLYESTER

UNBLEACHED, GINGER

XS S M L XL



UNBLEACHED



GINGER

D1 - SPECIALTY FLEECE

UNLIMITED LOGO CREW

211600141

FIT: CROPPED FIT

DESCRIPTION: CROPPED CREW NECK SWEATSHIRT WITH EMBROIDERY

58% COTTON 42% POLYESTER

DEEP OCEAN, BLACK

XS S M L XL



DEEP OCEAN



BLACK

D1 - SPECIALTY FLEECE

UNLIMITED LOGO HOOD

211610105

FIT: CROPPED FIT

DESCRIPTION: CROPPED HOODED SWEATSHIRT WITH EMBROIDERY

58% COTTON 42% POLYESTER

DEEP OCEAN, BLACK

XS S M L XL



DEEP OCEAN



BLACK

D1 - SPECIALTY FLEECE

OBEY FLAMES HOOD

211610106

FIT: CROPPED FIT

DESCRIPTION: CROPPED HOODED SWEATSHIRT WITH EMBROIDERY

58% COTTON 42% POLYESTER

ORCHID, BLACK

XS S M L XL



ORCHID



BLACK

D1 - SPECIALTY FLEECE

MONARCH HOOD

211610103

FIT: CROPPED FIT

DESCRIPTION: POLO COLLAR CREW NECK SWEATSHIRT

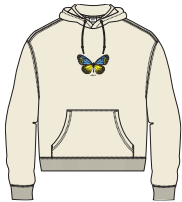
58% COTTON 42% POLYESTER

BLACK, UNBLEACHED

XS S M L XL



BLACK



UNBLEACHED

D1 - SPECIALTY FLEECE

HAPPY SHROOM HOOD

211610107

FIT: CROPPED FIT

DESCRIPTION: CROPPED HOODED SWEATSHIRT WITH EMBROIDERY

58% COTTON 42% POLYESTER

GINGER, ASH

XS S M L XL



GINGER



ASH

D1 - SPECIALTY FLEECE



DRESSES / BOTTOMS

FRIDAY POPLIN DRESS

401500386

FIT: OVERSIZED FIT

DESCRIPTION: ORGANIC POPLIN PRINTED L/S SHIRT DRESS

100% COTTON

BLACK MULTI, UNBLEACHED MULTI

XS / S, M / L



BLACK MULTI



UNBLEACHED MULTI

D1 - DRESSES

VACANCY CORD DRESS

401500387

FIT: LOOSE FIT

DESCRIPTION: 14 WALE CORDUROY

100% COTTON

GINGER, BLACK

XS S M L XL



GINGER



BLACK

D1 - DRESSES

SOFIA LS DRESS

401500388

FIT: FITTED L/S

DESCRIPTION: LONG SLEEVE COLLAR DRESS WITH PRINT

100% MODAL

BLACK MULTI, GINGER MULTI

XS S M L XL



GINGER MULTI

BLACK MULTI

D1 - DRESSES

BILLIE DRESS

401500385

FIT: LOOSE FIT

DESCRIPTION: OVERSIZE DRESS WITH PRINT

100% MODAL

PURPLE NITRO MULTI, BLACK MULTI

XS S M L XL



BLACK MULTI

PURPLE NITRO MULTI

D1 - DRESSES

AVA II ZIP SHIRT

281200111

FIT: RELAXED FIT

DESCRIPTION: CROPPED WOVEN SHIRT

100% COTTON

PLAID MULTI

XS S M L XL



PLAID MULTI

D1 - MATCHING SETS

AVA II PANT

242000102

FIT: REGULAR FIT

DESCRIPTION: PLEATED ELASTIC WAIST PANTS

100% COTTON

PLAID MULTI

XS S M L XL



PLAID MULTI

D1 - MATCHING SETS

UPSIDE VELVET BLAZER

221800385

FIT: RELAXED FIT

DESCRIPTION: OVERSIZE BLAZER WITH SINGLE ROW BUTTON CLOSURE AT FRONT

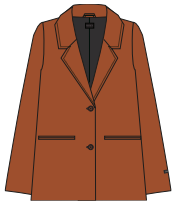
98% COTTON / 2% SPANDEX

BLACK, GINGER

XS S M L XL



BLACK



GINGER

D1 - MATCHING SETS

UPSIDE VELVET DRESS PANT

242000103

FIT: REGULAR FIT

DESCRIPTION: HALF ELASTIC WAISTBAND PANT

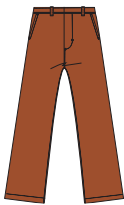
98% COTTON 2% SPANDEX

BLACK, GINGER

XS S M L XL



BLACK



GINGER

D1 - MATCHING SETS

TRIP JACQUARD TEE LS

231030111

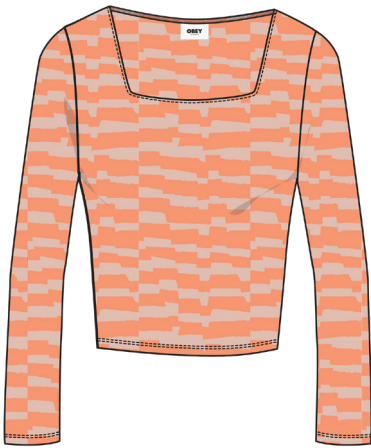
FIT: SMALL FIT

DESCRIPTION: SLIM FIT JACQUARD TOP WITH OBEY LABEL

100% COTTON

PEACH MULTI, BLACK MULTI

XS S M L XL



PEACH MULTI



BLACK MULTI

D1 - MATCHING SETS

TRIP JACQUARD SKIRT

411550086

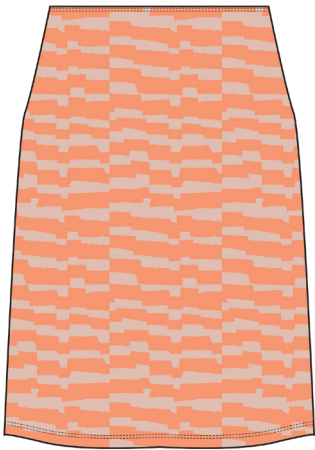
FIT: SLIM FIT

DESCRIPTION: SLIM FIT JACQUARD SKIRT WITH OBEY LABEL

100% COTTON

PEACH MULTI, BLACK MULTI

XS S M L XL



PEACH MULTI



BLACK MULTI

D1 - MATCHING SETS

UNLIMITED LOGO TIE DYE HOOD

211610102

FIT: CROPPED FIT

DESCRIPTION: CROPPED HOODED SWEATSHIRT WITH EMBROIDERY

80% COTTON 20% POLYESTER

GOOD GREY MULTI, COPPER COIN MULTI

XS S M L XL



GOOD GREY MULTI



COPPER COIN MULTI

D1 - MATCHING SETS

UNLIMITED LOGO TIE DYE SWEATPANT

242030029

FIT: REGULAR FIT

DESCRIPTION: REGULAR FIT SWEATPANT WITH EMBROIDERY

80% COTTON 20% POLYESTER

GOOD GREY MULTI, COPPER COIN MULTI

XS S M L XL



GOOD GREY MULTI



COPPER COIN MULTI

D1 - MATCHING SETS

EUKA CREW

211600139

FIT: CROPPED FIT

DESCRIPTION: CROPPED CREW NECK SWEATSHIRT WITH PRINT

58% COTTON 42% POLYESTER

UNBLEACHED, BLACK

XS S M L XL



UNBLEACHED



BLACK

D1 - MATCHING SETS

EUKA SWEATPANT

242030030

FIT: REGULAR FIT

DESCRIPTION: REGULAR FIT SWEATPANT WITH PRINT

58% COTTON 42% POLYESTER

UNBLEACHED, BLACK

XS S M L XL



UNBLEACHED



BLACK

D1 - MATCHING SETS

OPTIMISM HOOD

211610104

FIT: CROPPED FIT

DESCRIPTION: CROPPED HOODED SWEATSHIRT WITH EMBROIDERY

58% COTTON 42% POLYESTER

BLACK, GINGER

XS S M L XL



BLACK



GINGER

D1 - MATCHING SETS

OPTIMISM SWEATPANT

242030028

FIT: REGULAR FIT

DESCRIPTION: REGULAR FIT SWEATPANT WITH EMBROIDERY

58% COTTON 42% POLYESTER

BLACK, GINGER

XS S M L XL



BLACK



GINGER

D1 - MATCHING SETS

CARPENTER PANTS

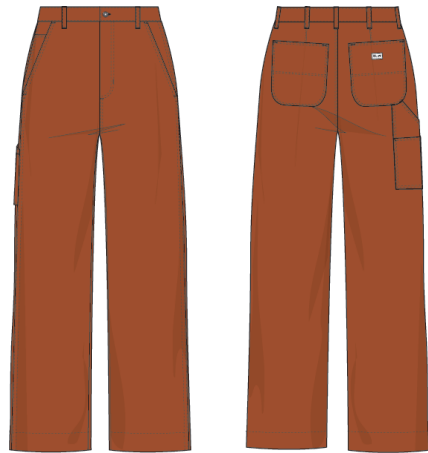
242020085

DESCRIPTION: TWILL CARPENTER PANTS

100% COTTON

GINGER, UNBLEACHED

24 25 26 27 28 29 30 31 32



UNBLEACHED

GINGER

D1 - BOTTOMS

STRAGGLER PRINTED PANT

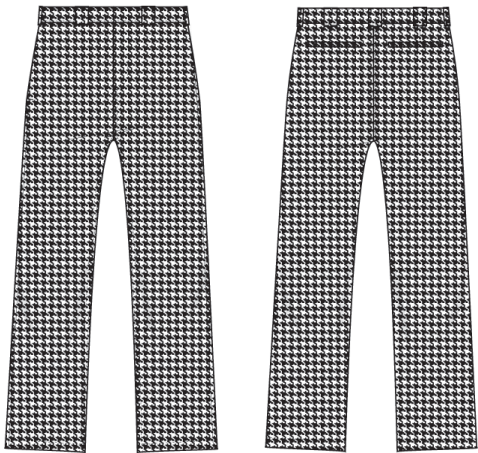
242020086

DESCRIPTION: PRINTED TWILL PANTS

60% COTTON 39% POLYESTER 1% SPANDEX

HOUNDSTOOTH, COW PRINT

24 25 26 27 28 29 30 31 32



COW PRINT

HOUNDSTOOTH

D1 - BOTTOMS

UPSIDE DRESS PANTS

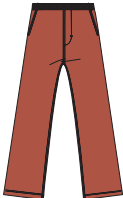
242000101

DESCRIPTION: ELASTIC WAIST DRESS PANTS

64% POLYESTER 34% RAYON 2% SPANDEX

MINI PLAID, HOT SAUCE

XS S M L XL



HOT SAUCE

MINI PLAID

D1 - CASUAL SUIT

LOMA CORDUROY PANTS

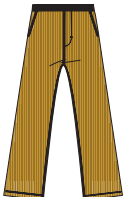
242000100

DESCRIPTION: CORDUROY ELASTIC PATCH POCKET PANTS

100% COTTON

DEEP OCEAN, GOLD

XS S M L XL



GOLD

DEEP OCEAN

D1 - BOTTOMS

STRAGGLER MINI SKIRT

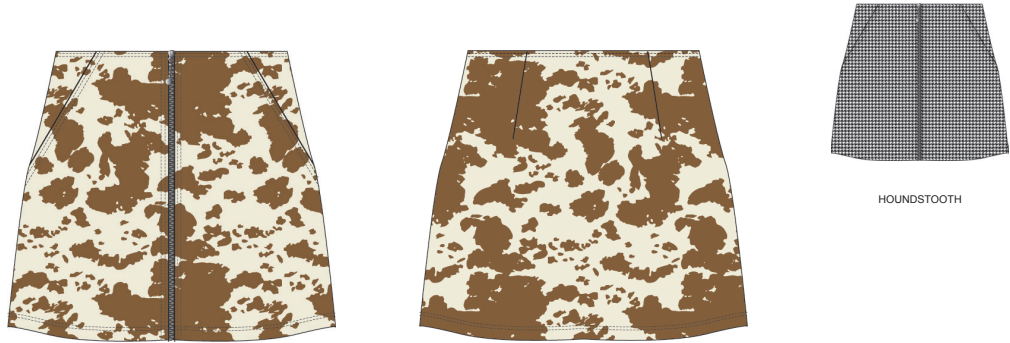
411550084

DESCRIPTION: ZIP HOUNDSTOOTH AND PRINT MINI A-LINE SKIRT

60% POLYESTER / 30% RAYON / 1% SPANDEX

COW PRINT, HOUNDSTOOTH

24 25 26 27 28 29 30 31 32



COW PRINT

D1 - SKIRTS

JOANIE PLAID SKIRT

411550085

DESCRIPTION: BUTTON UP PLAID MINI A-LINE SKIRT

64% POLYESTER / 34% RAYON / 2% SPANDEX

AQUA MULTI, BROWN MULTI

24 25 26 27 28 29 30 31 32



AQUA MULTI

D1 - SKIRTS



UNISEX



OBEY

NOTICE		NOTICE		NOTICE	
<p>NOTICE: The City of New York is a public entity and is subject to the provisions of the Freedom of Information Law (FOIL). Any person wishing to request information from the City of New York should submit a written request to the City of New York, Department of Transportation, 120 West Street, New York, NY 10038.</p>		<p>NOTICE: The City of New York is a public entity and is subject to the provisions of the Freedom of Information Law (FOIL). Any person wishing to request information from the City of New York should submit a written request to the City of New York, Department of Transportation, 120 West Street, New York, NY 10038.</p>		<p>NOTICE: The City of New York is a public entity and is subject to the provisions of the Freedom of Information Law (FOIL). Any person wishing to request information from the City of New York should submit a written request to the City of New York, Department of Transportation, 120 West Street, New York, NY 10038.</p>	
<p>NOTICE: The City of New York is a public entity and is subject to the provisions of the Freedom of Information Law (FOIL). Any person wishing to request information from the City of New York should submit a written request to the City of New York, Department of Transportation, 120 West Street, New York, NY 10038.</p>		<p>NOTICE: The City of New York is a public entity and is subject to the provisions of the Freedom of Information Law (FOIL). Any person wishing to request information from the City of New York should submit a written request to the City of New York, Department of Transportation, 120 West Street, New York, NY 10038.</p>		<p>NOTICE: The City of New York is a public entity and is subject to the provisions of the Freedom of Information Law (FOIL). Any person wishing to request information from the City of New York should submit a written request to the City of New York, Department of Transportation, 120 West Street, New York, NY 10038.</p>	

WEIRD...

ADAMSON REVERSIBLE JACKET

121800486

FIT: REGULAR FIT

DESCRIPTION: REVERSIBLE SHERPA AND NYLON JACKET

SHELL: 100% POLYESTER / LINING: 100% POLYESTER

LEAF MULTI, BLACK MULTI

XS S M L XL XXL

PLEASE NOTE UNISEX STYLES ARE SIZED IN MEN'S SIZING



*REVERSIBLE



*REVERSIBLE

LEAF MULTI

BLACK MULTI

THE CREW CORDUROY JACKET

121800491

FIT: STANDARD FIT

DESCRIPTION: INSULATED ZIP FRONT CORDUROY JACKET WITH EMBROIDERED ART

100% COTTON

VINTAGE BLUE, BLACK

XS S M L XL XXL

PLEASE NOTE UNISEX STYLES ARE SIZED IN MEN'S SIZING



VINTAGE BLUE



BLACK

ICON LEGACY SS TEE

131080310

FIT: REGULAR FIT

DESCRIPTION: MINI STRIPED S/S TEE WITH OBEY LOGO

100% COTTON

BLACK, MULTI, DEEP OCEAN MULTI

XS S M L XL XXL

PLEASE NOTE UNISEX STYLES ARE SIZED IN MEN'S SIZING



BLACK MULTI



DEEP OCEAN MULTI

D1 - TOPS

ICON LEGACY LONG SLEEVE TEE

131030110

FIT: REGULAR FIT

DESCRIPTION: STRIPED L/S TEE WITH OBEY LOGO

100% COTTON

DEEP OCEAN MULTI, BLACK MULTI

XS S M L XL XXL

PLEASE NOTE UNISEX STYLES ARE SIZED IN MEN'S SIZING



DEEP OCEAN MULTI



BLACK MULTI

D1 - TOPS

MINI BOX LOGO HOOD

112470133

FIT: REGULAR FIT

DESCRIPTION: FLEECE HOOD WITH OBEY EMBROIDERY

58% COTTON 42% POLYESTER

ORCHID, ASH, THYME

XS S M L XL XXL

PLEASE NOTE UNISEX STYLES ARE SIZED IN MEN'S SIZING



ORCHID



ASH



THYME

D1 - SPECIALTY FLEECE

MINI BOX LOGO CREW

112480100

FIT: REGULAR FIT

DESCRIPTION: FLEECE CREW WITH OBEY EMBROIDERY

58% COTTON 42% POLYESTER

ASH, THYME, ORCHID

XS S M L XL XXL

PLEASE NOTE UNISEX STYLES ARE SIZED IN MEN'S SIZING



ASH



THYME



ORCHID

D1 - SPECIALTY FLEECE

BOLD IDEALS HOOD

112470139

FIT: REGULAR FIT

DESCRIPTION: HOODED SWEATSHIRT WITH GRAPHIC EMBROIDERY

75% RECYCLED COTTON 25% RECYCLED POLYESTER

COPPER COIN, GOLDEN HARVEST, DEEP OCEAN, ORCHID

XS S M L XL XXL

PLEASE NOTE UNISEX STYLES ARE SIZED IN MEN'S SIZING



COPPER COIN



GOLDEN HARVEST



DEEP OCEAN



ORCHID

D1 - SPECIALTY FLEECE

BOLD IDEALS CREW

112480104

FIT: REGULAR FIT

DESCRIPTION: CREW NECK SWEATSHIRT WITH GRAPHIC EMBROIDERY

75% RECYCLED COTTON 25% RECYCLED POLYESTER

GOLDEN HARVEST, COPPER COIN, DEEP OCEAN, ORCHID

XS S M L XL XXL

PLEASE NOTE UNISEX STYLES ARE SIZED IN MEN'S SIZING



GOLDEN HARVEST



COPPER COIN



DEEP OCEAN



ORCHID

D1 - SPECIALTY FLEECE

VERNER ARGYLE CREW

112480098

FIT: REGULAR FIT

DESCRIPTION: CREWNECK SWEATSHIRT WITH ARGYLE RIB

100% ORGANIC COTTON

BLACK, VINTAGE BLUE

XS S M L XL XXL

PLEASE NOTE UNISEX STYLES ARE SIZED IN MEN'S SIZING



VINTAGE BLUE

BLACK

D1 - SPECIALTY FLEECE

LOVE IS THE CURE CREW

112480102

FIT: REGULAR FIT

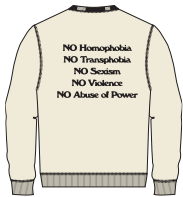
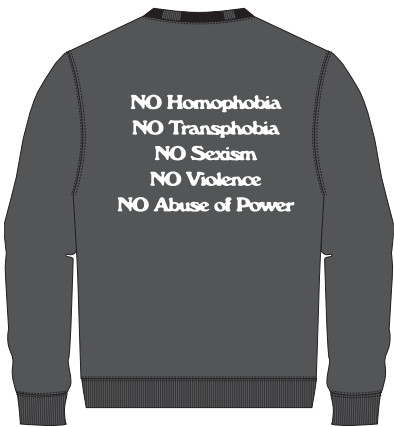
DESCRIPTION: FLEECE HOOD WITH OBEY EMBROIDERY

58% COTTON 42% POLYESTER

BLACK, UNBLEACHED

XS S M L XL XXL

PLEASE NOTE UNISEX STYLES ARE SIZED IN MEN'S SIZING



UNBLEACHED

BLACK

D1 - SPECIALTY FLEECE

MINI BOLD RECYCLED TIE DYE HOOD

112470140

FIT: REGULAR FIT

DESCRIPTION: TIE DYE HOODED PULLOVER WITH OBEY EMBROIDERY

73% RECYCLED COTTON 27% RECYCLED POLYESTER

TOFFEE MULTI, A.I. AQUA MULTI

XS S M L XL XXL

PLEASE NOTE UNISEX STYLES ARE SIZED IN MEN'S SIZING



TOFFEE MULTI



A.I. AQUA MULTI

D1 - SPECIALTY FLEECE

MINI BOLD RECYCLED TIE DYE CREW

112480105

FIT: REGULAR FIT

DESCRIPTION: TIE DYE CREW NECK SWEATSHIRT WITH OBEY EMBROIDERY

73% RECYCLED COTTON 27% RECYCLED POLYESTER

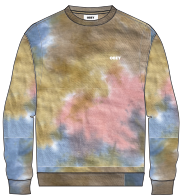
A.I. AQUA MULTI, TOFFEE MULTI

XS S M L XL XXL

PLEASE NOTE UNISEX STYLES ARE SIZED IN MEN'S SIZING



A.I. AQUA MULTI



TOFFEE MULTI

D1 - SPECIALTY FLEECE

STRAGGLER PANT

142020150

FIT: REGULAR FIT

DESCRIPTION: REGULAR FIT PANT

60% COTTON 39% POLYESTER 1% SPANDEX

LEAF, BLACK, KHAKI

26 27 28 29 30 31 32 33 34 36 38

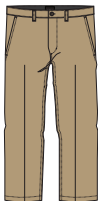
PLEASE NOTE UNISEX STYLES ARE SIZED IN MEN'S SIZING



LEAF



BLACK



KHAKI

D1 - BOTTOMS - UNISEX

STRAGGLER FLOODED PANT

142020113

FIT: REGULAR FIT

DESCRIPTION: REGULAR FIT PANT WITH FLOODED INSEAM

60% COTTON 39% POLYESTER 1% SPANDEX

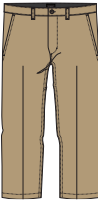
BLACK, KHAKI, LEAF

26 27 28 29 30 31 32 33 34 36 38

PLEASE NOTE UNISEX STYLES ARE SIZED IN MEN'S SIZING



BLACK



KHAKI



LAEF

D1 - BOTTOMS - UNISEX

HARDWORK CARPENTER PANT

142020184

FIT: REGULAR FIT

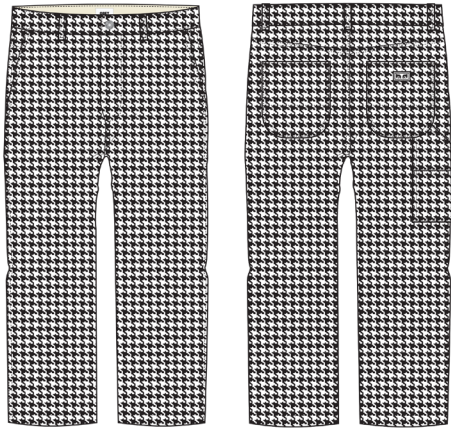
DESCRIPTION: PAINTERS PANT

100% COTTON

HOUNDSTOOTH, BLACK, VINTAGE BLUE

26 27 28 29 30 31 32 33 34 36 38

PLEASE NOTE UNISEX STYLES ARE SIZED IN MEN'S SIZING



HOUNDSTOOTH



BLACK



VINTAGE BLUE

D1 - BOTTOMS - UNISEX

ESTATE PANT

142020183

FIT: RELAXED FIT

DESCRIPTION: RELAXED STRAIGHT LEG FIT WITH SINGLE PLEAT FRONT

100% COTTON

FRENCH NAVY, BLACK, CATCHU WOOD

26 27 28 29 30 31 32 33 34 36 38

PLEASE NOTE UNISEX STYLES ARE SIZED IN MEN'S SIZING



FRENCH NAVY



BLACK



CATCHU WOOD

D1 - BOTTOMS - UNISEX

ESTATE PLAID PANT

142020186

FIT: RELAXED FIT

DESCRIPTION: RELAXED STRAIGHT LEG FIT WITH SINGLE PLEAT FRONT

60% POLY 40% COTTON

GINGER PLAID

26 27 28 29 30 31 32 33 34 36 38

PLEASE NOTE UNISEX STYLES ARE SIZED IN MEN'S SIZING



GINGER PLAID

D1 - BOTTOMS - UNISEX

EASY TWILL PANT

142020142

FIT: RELAXED FIT

DESCRIPTION: LOOSE FIT HERRINGBONE TWILL MECHANIC PANT

100% COTTON

BLACK, FRENCH NAVY, ARMY TENT

XS S M L XL XXL

PLEASE NOTE UNISEX STYLES ARE SIZED IN MEN'S SIZING



BLACK



FRENCH NAVY



ARMY TENT

D1 - BOTTOMS - UNISEX

EASY CORD PANT

142020188

FIT: RELAXED FIT

DESCRIPTION: ELASTIC WAIST PATCH POCKET CORDUROY PANT

100% COTTON

LEAF, DARK SPRINGS

XS S M L XL XXL

PLEASE NOTE UNISEX STYLES ARE SIZED IN MEN'S SIZING



LEAF



DARK SPRINGS

D1 - BOTTOMS - UNISEX

EASY CARGO PANT

142020189

FIT: RELAXED FIT

DESCRIPTION: ELASTIC WAIST TWILL PANT

100% COTTON

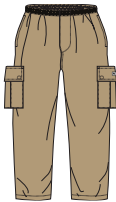
ARMY TENT, ALMONDI

XS S M L XL XXL

PLEASE NOTE UNISEX STYLES ARE SIZED IN MEN'S SIZING



ARMY TENT



ALMONDI

D1 - BOTTOMS

THURSTON JACKET

121800476

FIT: REGULAR FIT

DESCRIPTION: BULL DENIM CHORE COAT

100% COTTON

BLACK, UNBLEACHED

XS S M L XL XXL

PLEASE NOTE UNISEX STYLES ARE SIZED IN MEN'S SIZING



BLACK



UNBLEACHED

D1 - DENIM COLLECTION - UNISEX

THURSTON PANT

142020185

FIT: RELAXED FIT

DESCRIPTION: HEAVYWEIGHT TOUGH BULL DENIM PATCH POCKET PANT

100% COTTON

BLACK, UNBLEACHED

26 27 28 29 30 31 32 33 34 36 38

PLEASE NOTE UNISEX STYLES ARE SIZED IN MEN'S SIZING



BLACK



UNBLEACHED

D1 - DENIM COLLECTION - UNISEX

MORRISON JACKET

121800474

FIT: RELAXED FIT

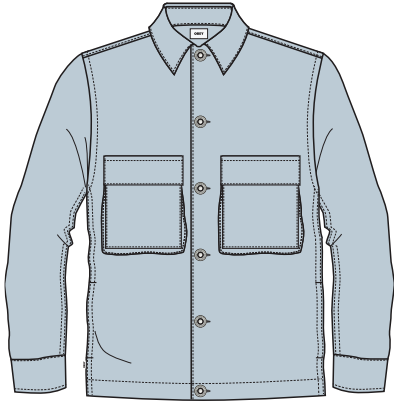
DESCRIPTION: DENIM SHACKET WITH BELLOWED POCKETS

100% COTTON

LIGHT INDIGO, BLACK

XS S M L XL XXL

PLEASE NOTE UNISEX STYLES ARE SIZED IN MEN'S SIZING



LIGHT INDIGO



BLACK

D1 - DENIM COLLECTION - UNISEX

EASY DENIM PANT

142010079

FIT: RELAXED FIT

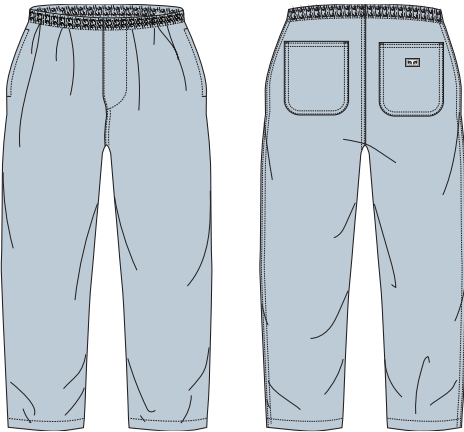
DESCRIPTION: HEAVYWEIGHT TOUGH BULL DENIM PATCH POCKET PANT

100% COTTON

LIGHT INDIGO, BLACK

XS S M L XL XXL

PLEASE NOTE UNISEX STYLES ARE SIZED IN MEN'S SIZING



LIGHT INDIGO



BLACK

D1 - DENIM COLLECTION - UNISEX

HARDWORK DENIM

142010077

FIT: RELAXED FIT

DESCRIPTION: RELAXED FIT BUTTON FLY DENIM WITH EYES LABELING

100% COTTON

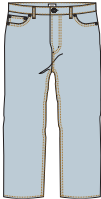
STONEWASH INDIGO, LIGHT INDIGO, BLACK

26 27 28 29 30 31 32 33 34 36 38

PLEASE NOTE UNISEX STYLES ARE SIZED IN MEN'S SIZING



STONEWASH INDIGO



LIGHT INDIGO



BLACK

D1 - DENIM COLLECTION - UNISEX

HARDWORK CARPENTER DENIM

142010078

FIT: RELAXED FIT

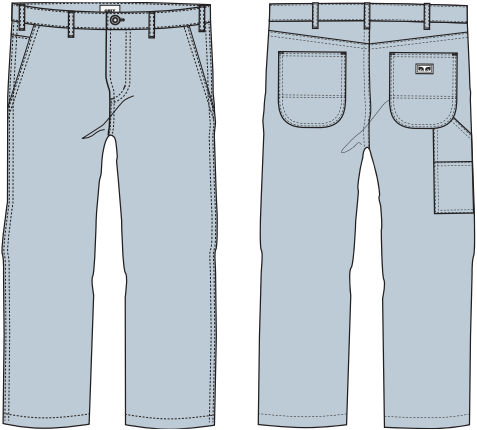
DESCRIPTION: DENIM CARPENTER PANT

100% COTTON

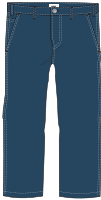
LIGHT INDIGO, STONEWASH INDIGO

26 27 28 29 30 31 32 33 34 36 38

PLEASE NOTE UNISEX STYLES ARE SIZED IN MEN'S SIZING



LIGHT INDIGO



STONEWASH INDIGO

D1 - DENIM COLLECTION - UNISEX

VACANT PANT

142020193

FIT: RELAXED FIT

DESCRIPTION: WASHED CANVAS DOUBLE KNEE PANT

100% COTTON

WASHED GINGER, WASHED BLACK

26 27 28 29 30 31 32 33 34 36 38



WASHED GINGER



WASHED BLACK

D1 - MATCHING SETS - UNISEX

NEWTON BLAZER JACKET

121800484

FIT: RELAXED FIT

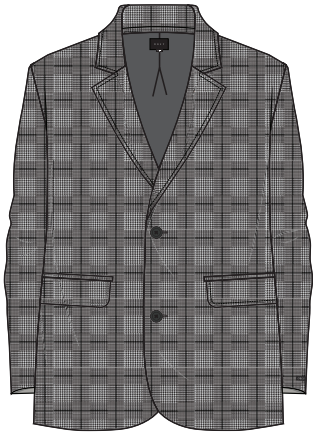
DESCRIPTION: CASUAL MEN'S BLAZER

60% POLYESTER 40% RAYON

BLACK PLAID, BLACK

XS S M L XL XXL

PLEASE NOTE UNISEX STYLES ARE SIZED IN MEN'S SIZING



BLACK

BLACK PLAID

D1 - MATCHING SETS - UNISEX

NEWTON PANT

142020190

FIT: RELAXED FIT

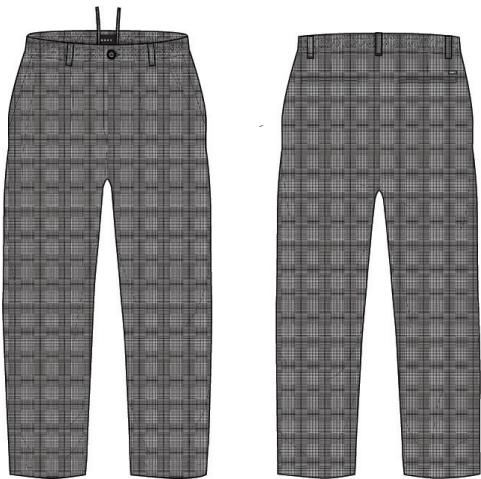
DESCRIPTION: ELASTIC WAIST PANT WITH ADJUSTABLE WAIST

60% POLYESTER 40% RAYON

BLACK PLAID, BLACK

XS S M L XL XXL

PLEASE NOTE UNISEX STYLES ARE SIZED IN MEN'S SIZING



BLACK

BLACK PLAID

D1 - MATCHING SETS - UNISEX

20
Argentinierstr.

DIMMI

DIE
LEWAG
IST DA!



Gehsag benutzen

ACCESSORIES

MONO



SAL BUCKET HAT

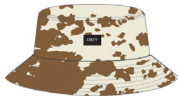
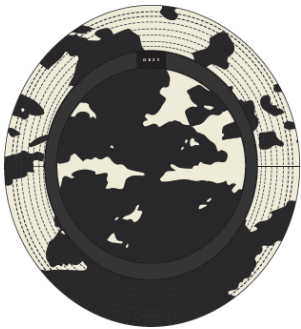
200520009

DESCRIPTION: CLASSIC "FLAT TOP" BUCKET HAT, PRINTED TWILL AND WOVEN LABEL

100% COTTON

BLACK COW PRINT, BROWN COW PRINT

O/S



BROWN COW PRINT

BLACK COW PRINT

D1 - ACCESSORIES

SHERPA BUCKET HAT

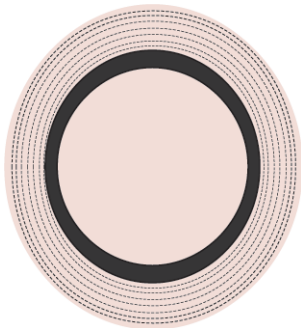
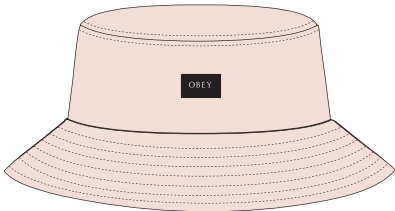
200520008

DESCRIPTION: CLASSIC "FLAT TOP" BUCKET HAT, SHERPA AND WOVEN LABEL

100% POLY

PUTTY PINK, BLACK / MINT

O/S



BLACK / MINT

PUTTY PINK

D1 - ACCESSORIES

VIRGIL BEANIE

200030116

DESCRIPTION: CLASSIC BEANIE IN SOLID COLORS WITH OBEY LABEL

100% ACRYLIC

BLACK, GINGER, ORCHID, PUTTY PINK

O/S



BLACK



GINGER



ORCHID



PUTTY PINK

D1 - ACCESSORIES

COOP SOCK

200260070

DESCRIPTION: SOCK WITH CUSTOM OBEY JACQUARD STRIPES AND LOGO

85% COTTON 13% POLY 2% ELASTANE

WHITE / BLACK, WHITE / LEAF, WHITE / ORCHID

O/S



WHITE / BLACK



WHITE / LEAF



WHITE / ORCHID

D1 - ACCESSORIES

CORDUROY PVC TOTE BAG

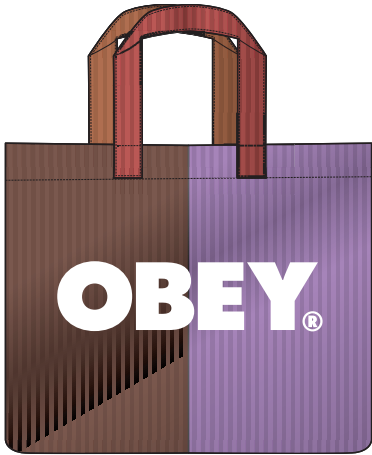
100010143

DESCRIPTION: TOTE BAG

50% COTTON 50% PVC

MULTI

O/S



MULTI

D1 - ACCESSORIES

DROP OUT WAISTPACK

200010162

DESCRIPTION: WAISTPACK WITH DOUBLE ZIPPER ENTRY POCKETS AND COMES IN A STURDY FLIGHT SATIN WITH WEBBING STRAPS FEATURES A LARGE OBEY EMBROIDERY

100% POLYESTER

BLACK, LEAF

O/S



BLACK



LEAF

D1 - ACCESSORIES

BIG BOY BELT
100050026

ADJUSTABLE WEBBING BELT WITH SILVER HARDWARE AND A OBEY EYE LABEL
60% COTTON / 40% POLYESTER
BLACK, HOT SAUCE, ORCHID
O/S



HOT SAUCE



ORCHID

BLACK

D1 - ACCESSORIES

BOLD COW BELT
100050032

DESCRIPTION: FAUX PONY HAIR COW PRINT BELT WITH PU BACKING AND METAL BUCKET
50% POLYESTER 50% PU
COW PRINT
S/M, L/XL
PLEASE NOTE UNISEX STYLES ARE SIZED IN MEN'S SIZING

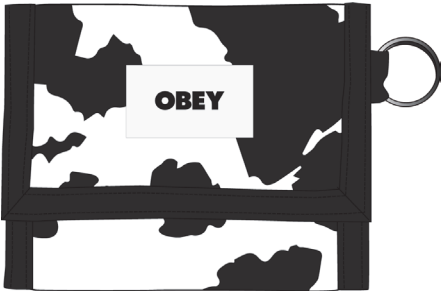


COW PRINT

D1 - ACCESSORIES

BOLD COW TRI FOLD WALLET
100310118

DESCRIPTION: TRI FOLD WALLET WITH MULTIPLE POCKETS, VELCRO CLOSURE AND OBEY BOLD LABEL
100% POLYESTER
COW PRINT
O/S



COW PRINT

D1 - ACCESSORIES

THE CURE SCARF

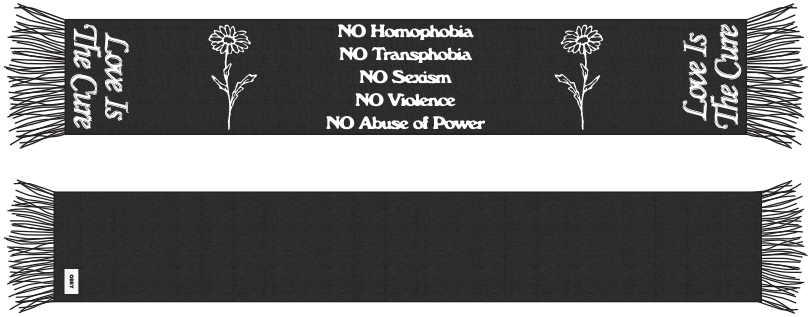
100240017

DESCRIPTION: BLACK SCARF WITH INTARSIA ART AND BOLD OBEY LABEL

60% COTTON / 40% POLYESTER

BLACK

O/S



BLACK

D1 - ACCESSORIES

THE CURE GLOVES

100330008

DESCRIPTION: TOUCH CAPABILITY THUMB AND FOREFINGER GLOVES WITH SILICON GRIP PALMS AND PRINT

58% POLYESTER 36% NYLON 6% SPANDEX

BLACK

S/M - L/XL



BLACK

D1 - ACCESSORIES

PROTEST MUG

100630002

DESCRIPTION: PRINTED BLACK MUG

100% CERAMIC

BLACK / WHITE

O/S



BLACK / WHITE

D1 - ACCESSORIES

PROTEST BOTTLE

100320004

DESCRIPTION: METAL INSULATED WATER BOTTLE WITH PRINT

SIZE: 16 OZ

100% STEEL

O/S



SILVER / BLACK

D1 - ACCESSORIES

OBEY ICON BANDANA

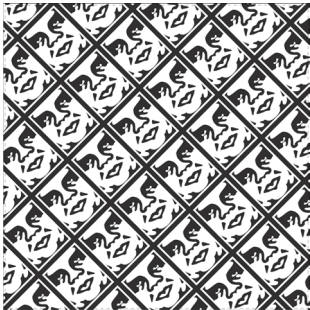
100020002

DESCRIPTION: PRINTED BANDANA

100% COTTON

BLACK / WHITE

O/S



BLACK / WHITE

D1 - ACCESSORIES

BOLD PEN

100770000

DESCRIPTION: PEN WITH OBEY PRINT

100% PLASTIC

BLACK

O/S



BLACK

D1 - ACCESSORIES

ICON PHONE RING

100710001

DESCRIPTION: STEEL WITH ENAMEL PHONE RING ICON FACE

100% STEEL

O/S



WHITE

D1 - ACCESSORIES

OBEY ICON METAL KEYCHAIN

100160021

DESCRIPTION: METAL KEYCHAIN WITH ICON

100% METAL

O/S



WHITE

D1 - ACCESSORIE

OBEY ICON AIR FRESHENER

100680003

DESCRIPTION: PINE SCENT OBEY ICON FACE AIR FRESHENER

100% PAPER

BLACK MULTI

PINE SCENT

O/S



BLACK MULTI

D1 - ACCESSORIES

STRANG DAYS AIR FRESHENER

100680005

DESCRIPTION: PRINTED AIR FRESHNER

100% PAPER

WHITE MULTI

O/S



WHITE MULTI

D1 - ACCESSORIES

PROTEST AIR FRESHENER

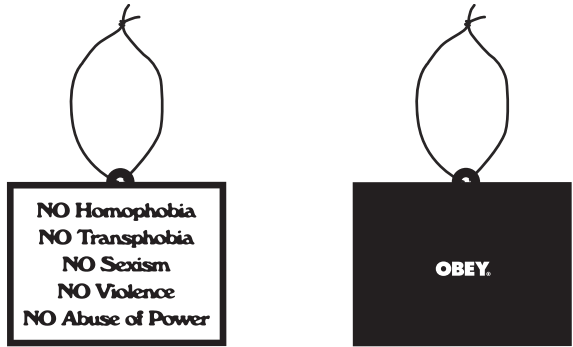
100680004

DESCRIPTION: PRINTED AIR FRESHNER

100% PAPER

BLACK / WHITE

O/S



BLACK / WHITE

D1 - ACCESSORIES - ESSENTIALS

STICKER PACK 5

100270012

DESCRIPTION: ASSORTED STICKERS FOR THE OBEY FIENDS. SPREAD IT! (STICKERS MAY VARY FROM CATALOG PHOTO)

ASSORTED

O/S



ASSORTED

D1 - ACCESSORIES - ESSENTIALS

STICKER PACK 2

100270001

DESCRIPTION: ASSORTED STICKERS FOR THE OBEY FIENDS. SPREAD IT! (STICKERS MAY VARY FROM CATALOG PHOTO)

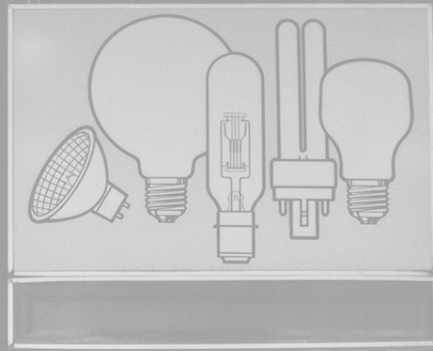
ASSORTED

O/S



ASSORTED

D1 - ACCESSORIES - ESSENTIALS



POP



OBEY BOLD
326002349

DESCRIPTION: CORK BLOCK WITH BOLD OBEY PRINT
100% CORK
O/S

* THIS ITEM IS POP, AND INTENDED TO BE USED IN STORE DISPLAY. NOT FOR RESALE



CORK

D1 - POP

LARGE ICON FACE FRAMED PRINT
326000174

DESCRIPTION: FRAMED PRINT
ASSORTED
O/S

* THIS ITEM IS POP, AND INTENDED TO BE USED IN STORE DISPLAY. NOT FOR RESALE



ASSORTED

D1 - POP



PRINTABLE'S

OBEY TAG

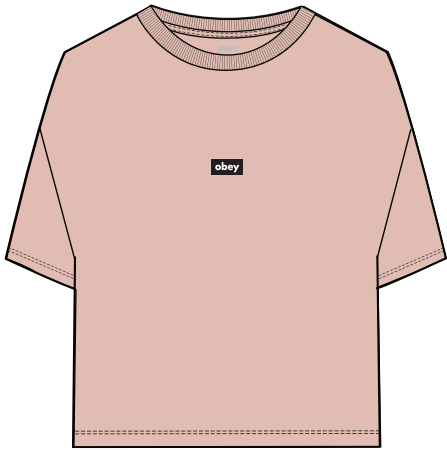
267621986

DESCRIPTION: HEAVYWEIGHT BOX FIT CROP T-SHIRT

CONTENT: 100% COTTON

PUTTY PINK, GINGER, WHITE

XS S M L XL



PUTTY PINK



GINGER



WHITE

D1 - CUSTOM CROP TEE

OBEY EYES 2

267622040

DESCRIPTION: HEAVYWEIGHT BOX FIT CROP T-SHIRT

CONTENT: 100% COTTON

ORCHID, OFF BLACK, SAGO

XS S M L XL



ORCHID



OFF BLACK



SAGO

D1 - CUSTOM CROP TEE

OBEY VLINDER

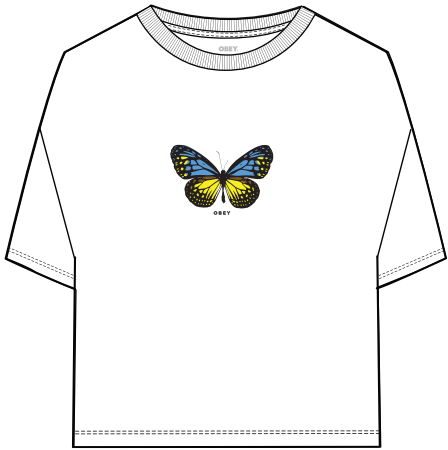
267622041

DESCRIPTION: HEAVYWEIGHT BOX FIT CROP T-SHIRT

CONTENT: 100% COTTON

WHITE, OFF BLACK, ORCHID

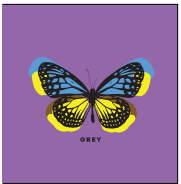
XS S M L XL



WHITE



OFF BLACK



ORCHID

D1 - CUSTOM CROP TEE

MUSHROOM FLOWER

267622042

DESCRIPTION: HEAVYWEIGHT BOX FIT CROP T-SHIRT

CONTENT: 100% COTTON

GINGER, OFF BLACK, WHITE

XS S M L XL



GINGER



OFF BLACK



WHITE

D1 - CUSTOM CROP TEE

OBEY OP FLOWER

267622043

DESCRIPTION: HEAVYWEIGHT BOX FIT CROP T-SHIRT

CONTENT: 100% COTTON

SAGO, PUTTY PINK, WHITE

XS S M L XL



SAGO



PUTTY PINK



WHITE

D1 - CUSTOM CROP TEE

OBEY FLAMES

267622044

DESCRIPTION: HEAVYWEIGHT BOX FIT CROP T-SHIRT

CONTENT: 100% COTTON

ORCHID, WHITE

XS S M L XL



ORCHID



WHITE

D1 - CUSTOM CROP TEE

THE WORLD IS YOURS

267622045

DESCRIPTION: HEAVYWEIGHT BOX FIT CROP T-SHIRT

CONTENT: 100% COTTON

OFF BLACK, ORCHID

XS S M L XL



OFF BLACK



ORCHID

D1 - CUSTOM CROP TEE

OBEY LAMB

267622046

DESCRIPTION: HEAVYWEIGHT BOX FIT CROP T-SHIRT

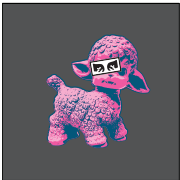
CONTENT: 100% COTTON

WHITE, OFF BLACK, GINGER

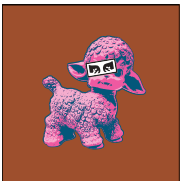
XS S M L XL



WHITE



OFF BLACK



GINGER

D1 - CUSTOM CROP TEE

OBEY BOLD 4

267711944

DESCRIPTION: TIE DYE HEAVYWEIGHT BOX FIT CROP T-SHIRT

CONTENT: 100% COTTON

COPPER COIN TIE DYE, SPLIT PEA TIE DYE

XS S M L XL



COPPER COIN TIE DYE



SPLIT PEA TIE DYE

D1 - TIE DYE CUSTOM CROP TEE

OBEY VLINDER

267712041

DESCRIPTION: TIE DYE HEAVYWEIGHT BOX FIT CROP T-SHIRT

CONTENT: 100% COTTON

SPLIT PEA TIE DYE, COPPER COIN TIE DYE

XS S M L XL



SPLIT PEA TIE DYE



COPPER COIN TIE DYE

D1 - TIE DYE CUSTOM CROP TEE

OBEY OP FLOWER

267712043

DESCRIPTION: TIE DYE HEAVYWEIGHT BOX FIT CROP T-SHIRT

CONTENT: 100% COTTON

COPPER COIN TIE DYE, SPLIT PEA TIE DYE

XS S M L XL



COPPER COIN TIE DYE



SPLIT PEA TIE DYE

D1 - TIE DYE CUSTOM CROP TEE

THE WORLD IS YOURS

267712045

DESCRIPTION: TIE DYE HEAVYWEIGHT BOX FIT CROP T-SHIRT

CONTENT: 100% COTTON

SPLIT PEA TIE DYE, COPPER COIN TIE DYE

XS S M L XL



SPLIT PEA TIE DYE



COPPER COIN TIE DYE

D1 - TIE DYE CUSTOM CROP TEE

OBEY BOLD 4

267611944

DESCRIPTION: HEAVYWEIGHT RELAXED LONG SLEEVE T-SHIRT

CONTENT: 100% COTTON

ORCHID, OFF BLACK, SAGO

XS S M L XL



ORCHID



OFF BLACK



SAGO

D1 - CUSTOM BOX L/S TEE

OBEY VAAS

267612047

DESCRIPTION: HEAVYWEIGHT RELAXED LONG SLEEVE T-SHIRT

CONTENT: 100% COTTON

WHITE, OFF BLACK

XS S M L XL



WHITE



OFF BLACK

D1 - CUSTOM BOX L/S TEE

BUTTERFLY FLEE

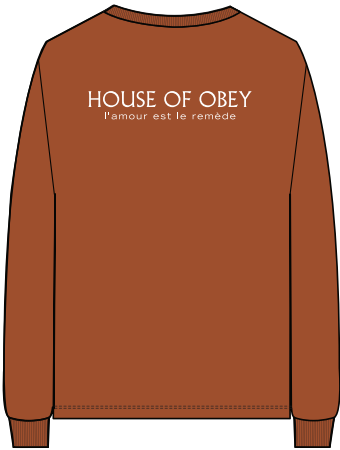
267612048

DESCRIPTION: HEAVYWEIGHT RELAXED LONG SLEEVE T-SHIRT

CONTENT: 100% COTTON

GINGER, ORCHID, WHITE

XS S M L XL



GINGER



ORCHID



WHITE

D1 - CUSTOM BOX L/S TEE

OBEY OP FLOWER

267612049

DESCRIPTION: HEAVYWEIGHT RELAXED LONG SLEEVE T-SHIRT

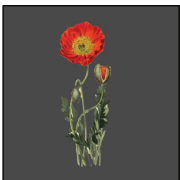
CONTENT: 100% COTTON

PUTTY PINK, OFF BLACK, ORCHID

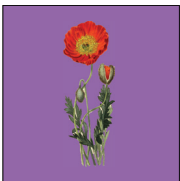
XS S M L XL



PUTTY PINK



OFF BLACK



ORCHID

D1 - CUSTOM BOX L/S TEE

OBEY BOLD 4

263451944

DESCRIPTION: PIGMENT DYED OVERSIZED BOX T-SHIRT

CONTENT: 100% COTTON

GINGER, OFF BLACK, ORCHID

XS S M L XL



GINGER



OFF BLACK



ORCHID

D1 - CHOICE BOX TEE

OBEY EYES

263451874

DESCRIPTION: PIGMENT DYED OVERSIZED BOX T-SHIRT

CONTENT: 100% COTTON

DESERT SUN, ORCHID, WHITE

XS S M L XL



DESERT SUN



ORCHID



WHITE

D1 - CHOICE BOX TEE

FLEEDOM

263452050

DESCRIPTION: PIGMENT DYED OVERSIZED BOX T-SHIRT

CONTENT: 100% COTTON

SAGO, GINGER, WHITE

XS S M L XL



SAGO



GINGER



WHITE

D1 - CHOICE BOX TEE

BUTTERFLY FLEE

263452048

DESCRIPTION: PIGMENT DYED OVERSIZED BOX T-SHIRT

CONTENT: 100% COTTON

PUTTY PINK, OFF BLACK, SAGO

XS S M L XL



PUTTY PINK



OFF BLACK



SAGO

D1 - CHOICE BOX TEE

OBEY BOUNTY

263452051

DESCRIPTION: PIGMENT DYED OVERSIZED BOX T-SHIRT

CONTENT: 100% COTTON

WHITE, GINGER, PUTTY PINK

XS S M L XL



WHITE



GINGER



PUTTY PINK

D1 - CHOICE BOX TEE

OBEY HUGGER

263452054

DESCRIPTION: PIGMENT DYED OVERSIZED BOX T-SHIRT

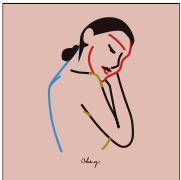
CONTENT: 100% COTTON

OFF BLACK, PUTTY PINK, WHITE

XS S M L XL



OFF BLACK



PUTTY PINK



WHITE

D1 - CHOICE BOX TEE

NO TIME

263452055

DESCRIPTION: PIGMENT DYED OVERSIZED BOX T-SHIRT

CONTENT: 100% COTTON

WHITE, OFF BLACK

XS S M L XL



WHITE



OFF BLACK

D1 - CHOICE BOX TEE

EVERYTHING WILL BE OK

263452056

DESCRIPTION: PIGMENT DYED OVERSIZED BOX T-SHIRT

CONTENT: 100% COTTON

OFF BLACK, ORCHID

XS S M L XL



OFF BLACK



ORCHID

D1 - CHOICE BOX TEE

ANTI-HATE CAMPAIGN

263452057

DESCRIPTION: PIGMENT DYED OVERSIZED BOX T-SHIRT

CONTENT: 100% COTTON

WHITE, OFF BLACK

XS S M L XL



WHITE



OFF BLACK

D1 - CHOICE BOX TEE

WORLD EXPLOSION

263452058

DESCRIPTION: PIGMENT DYED OVERSIZED BOX T-SHIRT

CONTENT: 100% COTTON

ORCHID, OFF BLACK

XS S M L XL



ORCHID



OFF BLACK

D1 - CHOICE BOX TEE

OBEY BOLD 4

263491944

DESCRIPTION: TIE DYED OVERSIZED BOX T-SHIRT

CONTENT: 100% COTTON

LIGHT TOFFEE BLOTCH, COPPER COIN BLOTCH

XS S M L XL



LIGHT TOFFEE BLOTCH



COPPER COIN BLOTCH

D1 - TIE DYE CHOICE BOX TEE

BUTTERFLY FLEE 2

263492059

DESCRIPTION: TIE DYED OVERSIZED BOX T-SHIRT

CONTENT: 100% COTTON

COPPER COIN BLOTCH, LIGHT TOFFEE BLOTCH

XS S M L XL



COPPER COIN BLOTCH



LIGHT TOFFEE BLOTCH

D1 - TIE DYE CHOICE BOX TEE

NO TIME

263492055

DESCRIPTION: TIE DYED OVERSIZED BOX T-SHIRT

CONTENT: 100% COTTON

LIGHT TOFFEE BLOTCH, COPPER COIN BLOTCH

XS S M L XL



LIGHT TOFFEE BLOTCH



COPPER COIN BLOTCH

D1 - TIE DYE CHOICE BOX TEE

EVERYTHING WILL BE OK

263492056

DESCRIPTION: TIE DYED OVERSIZED BOX T-SHIRT

CONTENT: 100% COTTON

COPPER COIN BLOTCH, LIGHT TOFFEE BLOTCH

XS S M L XL



COPPER COIN BLOTCH



LIGHT TOFFEE BLOTCH

D1 - TIE DYE CHOICE BOX TEE

OBEY HOUSE

263502060

DESCRIPTION: ORGANIC LIGHTWEIGHT CREWNECK T-SHIRT

CONTENT: 100% ORGANIC COTTON

DESERT SUN, VINTAGE BLUE, WHITE

XS S M L XL



DESERT SUN



VINTAGE BLUE



WHITE

D1 - ORGANIC VINTAGE CREW

HOUSE OF OBEY 2

263502061

DESCRIPTION: ORGANIC LIGHTWEIGHT CREWNECK T-SHIRT

CONTENT: 100% ORGANIC COTTON

WHITE, OFF BLACK, COPPER COIN

XS S M L XL



WHITE



OFF BLACK



COPPER COIN

D1 - ORGANIC VINTAGE CREW

FLOWER & VLINDER

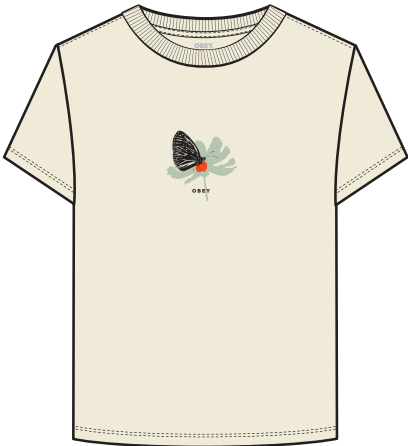
263502062

DESCRIPTION: ORGANIC LIGHTWEIGHT CREWNECK T-SHIRT

CONTENT: 100% ORGANIC COTTON

SAGO, OFF BLACK, DESERT SUN

XS S M L XL



SAGO



OFF BLACK



DESERT SUN

D1 - ORGANIC VINTAGE CREW

MUSHROOM ANIMAL

263502063

DESCRIPTION: ORGANIC LIGHTWEIGHT CREWNECK T-SHIRT

CONTENT: 100% ORGANIC COTTON

OFF BLACK, COPPER COIN, WHITE

XS S M L XL



OFF BLACK



COPPER COIN



WHITE

D1 - ORGANIC VINTAGE CREW

FLOWER VAAS

263502064

DESCRIPTION: ORGANIC LIGHTWEIGHT CREWNECK T-SHIRT

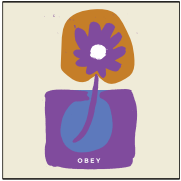
CONTENT: 100% ORGANIC COTTON

COPPER COIN, SAGO

XS S M L XL



COPPER COIN



SAGO

D1 - ORGANIC VINTAGE CREW

OBEY LOVERS

263502065

DESCRIPTION: ORGANIC LIGHTWEIGHT CREWNECK T-SHIRT

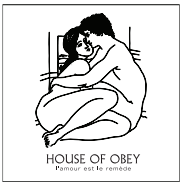
CONTENT: 100% ORGANIC COTTON

PUTTY PINK, WHITE

XS S M L XL



PUTTY PINK



WHITE

D1 - ORGANIC VINTAGE CREW

OBEY KARMA

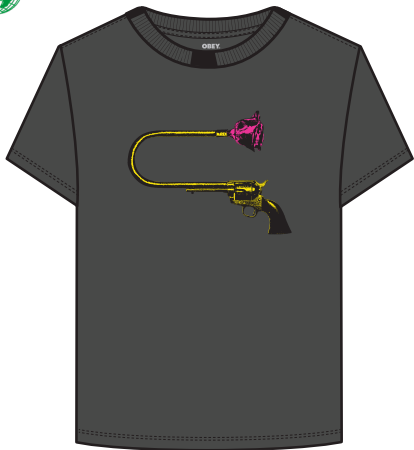
263502066

DESCRIPTION: ORGANIC LIGHTWEIGHT CREWNECK T-SHIRT

CONTENT: 100% ORGANIC COTTON

OFF BLACK, SAGO

XS S M L XL



SAGO

OFF BLACK

D1 - ORGANIC VINTAGE CREW

OBEY ON THE RUN

263502067

DESCRIPTION: ORGANIC LIGHTWEIGHT CREWNECK T-SHIRT

CONTENT: 100% ORGANIC COTTON

VINTAGE BLUE, WHITE

XS S M L XL



WHITE

VINTAGE BLUE

D1 - ORGANIC VINTAGE CREW

OBEY HOUSE

263522060

DESCRIPTION: TIE DYED ORGANIC LIGHTWEIGHT CREWNECK T-SHIRT

CONTENT: 100% ORGANIC COTTON

DESERT SUN TIE DYE, PUTTY PINK TIE DYE

XS S M L XL



DESERT SUN TIE DYE



PUTTY PINK TIE DYE

D1 - TIE DYE ORGANIC VINTAGE CREW

MUSHROOM ANIMAL

263522063

DESCRIPTION: TIE DYED ORGANIC LIGHTWEIGHT CREWNECK T-SHIRT

CONTENT: 100% ORGANIC COTTON

VINTAGE BLUE TIE DYE, PUTTY PINK TIE DYE

XS S M L XL



VINTAGE BLUE TIE DYE



PUTTY PINK TIE DYE

D1 - TIE DYE ORGANIC VINTAGE CREW

FLOWER VAAS

263522064

DESCRIPTION: TIE DYED ORGANIC LIGHTWEIGHT CREWNECK T-SHIRT

CONTENT: 100% ORGANIC COTTON

PUTTY PINK TIE DYE, VINTAGE BLUE TIE DYE

XS S M L XL



PUTTY PINK TIE DYE



VINTAGE BLUE TIE DYE

D1 - TIE DYE ORGANIC VINTAGE CREW

OBEY LOVERS

263522065

DESCRIPTION: TIE DYED ORGANIC LIGHTWEIGHT CREWNECK T-SHIRT

CONTENT: 100% ORGANIC COTTON

VINTAGE BLUE TIE DYE, DESERT SUN TIE DYE

XS S M L XL



VINTAGE BLUE TIE DYE



DESERT SUN TIE DYE

D1 - TIE DYE ORGANIC VINTAGE CREW

OBEY TAG

217541986

DESCRIPTION: BOX FIT RELAXED HOODIE

CONTENT: 80% COTTON 20% POLY

WHITE, BLACK, HUNTER GREEN

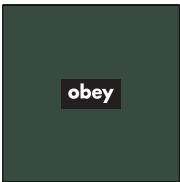
XS S M L XL



WHITE



BLACK



HUNTER GREEN

D1 - BOX FIT HOOD

OBEY OP FLOWER

217542043

DESCRIPTION: BOX FIT RELAXED HOODIE

CONTENT: 80% COTTON 20% POLY

DEEP NAVY, GREY HEATHER, WHITE

XS S M L XL



DEEP NAVY



GREY HEATHER



WHITE

D1 - BOX FIT HOOD

OBEY LAMB

217542046

DESCRIPTION: BOX FIT RELAXED HOODIE

CONTENT: 80% COTTON 20% POLY

BLACK, HUNTER GREEN, WHITE

XS S M L XL



BLACK



HUNTER GREEN



WHITE

D1 - BOX FIT HOOD

OBEY BOUNTY CUBE

217542068

DESCRIPTION: BOX FIT RELAXED HOODIE

CONTENT: 80% COTTON 20% POLY

DEEP NAVY, BLACK, HUNTER GREEN, WHITE

XS S M L XL



DEEP NAVY



BLACK



HUNTER GREEN



WHITE

D1 - BOX FIT HOOD

OBEY TAG

217531986

DESCRIPTION: BOX FIT RELAXED CREW

CONTENT: 80% COTTON 20% POLY

DEEP NAVY, GREY HEATHER, WHITE

XS S M L XL



DEEP NAVY



GREY HEATHER



WHITE

D1 - BOX FIT CREW

OBEY BOUNTY

217532051

DESCRIPTION: BOX FIT RELAXED CREW

CONTENT: 80% COTTON 20% POLY

GREY HEATHER, WHITE

XS S M L XL



GREY HEATHER



WHITE

D1 - BOX FIT CREW

THE WORLD IS YOURS

217532045

DESCRIPTION: BOX FIT RELAXED CREW

CONTENT: 80% COTTON 20% POLY

WHITE, BLACK

XS S M L XL



WHITE

D1 - BOX FIT CREW



BLACK

EVERYTHING WILL BE OK

217532056

DESCRIPTION: BOX FIT RELAXED CREW

CONTENT: 80% COTTON 20% POLY

BLACK, WHITE

XS S M L XL



BLACK

D1 - BOX FIT CREW



WHITE