



**OBEY**



**WORLDWIDE PROPAGANDA**  
**THE MEDIUM IS THE MESSAGE**



INSIDE FRONT COVER

THE OBEY CAMPAIGN CAN BE EXPLAINED AS AN EXPERIMENT IN PHENOMENOLOGY. THE FIRST AIM OF PHENOMENOLOGY IS TO REAWAKEN A SENSE OF WONDER ABOUT ONE'S ENVIRONMENT. THE OBEY CAMPAIGN ATTEMPTS TO STIMULATE CURIOSITY AND BRING PEOPLE TO QUESTION BOTH THE CAMPAIGN AND THEIR RELATIONSHIP WITH THEIR SURROUNDINGS. BECAUSE PEOPLE ARE NOT USED TO SEEING ADVERTISEMENTS OR PROPAGANDA FOR WHICH THE MOTIVE IS NOT OBVIOUS, FREQUENT AND NOVEL ENCOUNTERS WITH OBEY PROPAGANDA PROVOKE THOUGHT AND POSSIBLE FRUSTRATION, NEVERTHELESS REVITALIZING THE VIEWER'S PERCEPTION AND ATTENTION TO DETAIL. TO CATALYZE A THOUGHTFUL DIALOGUE DECONSTRUCTING THE PROCESS OF IMAGE ABSORPTION IS THE ULTIMATE GOAL. ALL IN THE NAME OF FUN AND OBSERVATION.

THE MEDIUM IS THE MESSAGE.



17462 VON KARMAN AVE.  
IRVINE, CA 92614 U.S.A.  
PHONE: 949.596.8400 / FAX: 949.596.8437  
[WWW.OBEYCLOTHING.COM](http://WWW.OBEYCLOTHING.COM)  
[WWW.OBEYGIANT.COM](http://WWW.OBEYGIANT.COM)

# **SALES REPRESENTATIVES**

---

## **PACIFIC NORTHWEST**

BURL DARDEN  
64171 TUMALO RIM DRIVE  
BEND, OR 97701  
P: 541.385.3302 / F: 541.385.3302  
E: BURL@OBEYCLOTHING.COM

LEVI CAMPBELL  
2039 SE 20TH AVE  
PORTLAND, OR 97214  
P: 360.510.6811  
E: LEVI@OBEYCLOTHING.COM

## **LOS ANGELES**

TARA JAICKS  
17462 VON KARMAN AVE.  
IRVINE, CA 92614  
C: 480.205.8272  
E: TARA@OBEYCLOTHING.COM

## **ORANGE COUNTY / SAN DIEGO**

MARK MAZZA  
20091 SHOREWOOD CIRCLE  
HUNTINGTON BEACH, CA 92649  
C: 714.614.7901 / F: 714.964.3676  
E: MDMSALES@ME.COM

## **HAWAII / GUAM**

NOEL MARCHAN  
95-1038 AINAMAKUA DR. #H  
MILILANI, HI 96789  
P: 808.676.5290  
E: NMARCHAN@AOL.COM

## **NOR CAL, NEVADA, ARIZONA, NEW MEXICO**

JENNIFER L. ZWEIG  
8161 SKYLINE BLVD.  
OAKLAND, CA 94611  
C: 510.388.4418  
E: JLZ@OBEYCLOTHING.COM

## **MIDWEST**

LAURA KARELS  
13816 SHIRLEY DR.  
BURNSVILLE, MN 55337  
P: 952.461.4218 / F: 952.461.4219  
E: LAURA\_KARELS@YAHOO.COM

## **NORTHEAST**

JOE COMBA  
26 AVON RD.  
NEW ROCHELLE, NY 10804  
C: 914.393.9897  
E: EJOE@OBEYCLOTHING.COM

## **MID ATLANTIC / SOUTHEAST**

ANDREW MERCIER  
10777 BISHOPVILLE RD.  
BISHOPVILLE, MD 21813  
C: 443.614.4422  
E: MERCIER@OBEYCLOTHING.COM

## **INTERNATIONAL**

NICK LHOTSKY  
17462 VON KARMAN AVE.  
IRVINE, CA 92614 U.S.A.  
P: 949.596.8400 X263  
E: NICK@OBEYCLOTHING.COM

---

## TABLE OF CONTENTS

---

**04**  
FEATURE:  
WHAT'S BEEN HAPPENING

**58**  
CUSTOM BOX BLEACH TEES

**78**  
SALVAGE LONG SLEEVE TEES

**06**  
FAIR TRADE

**59**  
CUSTOM BOX BLEACH  
LONG SLEEVE TEES

**80**  
DELANCEY CREW FLEECE

**08**  
COLLECTION I

**60**  
CUSTOM BOX PIGMENT  
LONG SLEEVE TEES

**82**  
DELANCEY PULLOVER HOOD  
FLEECE

**26**  
COLLECTION II

**62**  
MOCK NECK CROPPED TEES

**84**  
DELANCEY SWEATPANTS

**36**  
LOUNGE

**64**  
CROPPED LONG SLEEVE TEES

**86**  
BASIC ZIP HOOD FLEECE

**37**  
DENIM FIT GUIDE

**66**  
BOX PIGMENT CREW FLEECE

**88**  
SHRUNKEN TEES

**38**  
PANT FIT GUIDE

**68**  
BOX PIGMENT  
PULLOVER HOOD FLEECE

**90**  
DRIFTER CLASSIC TEES

**40**  
ACCESSORIES

**70**  
BOX MOCK PIGMENT  
CREW FLEECE

**92**  
CLASSIC COACHES JACKETS

**47**  
P.O.P.

**72**  
CUSTOM PIGMENT  
SWEATPANTS

**93**  
ANORAKS

**48**  
CAD CATEGORY ROUND-UP

**74**  
CLASSIC CREW TEES

**94**  
HOODED TRENCH JACKETS

**52**  
ARTIST SERIES:  
MARILYN RONDON

**76**  
CAMO CREW TEES

**95**  
PRINTABLES CAD ROUND-UP

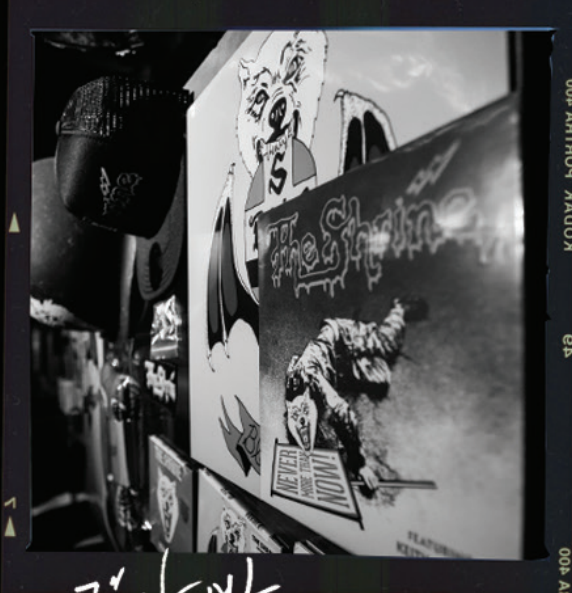
**54**  
CUSTOM BOX TEES

**77**  
CAMO LONG SLEEVE TEES

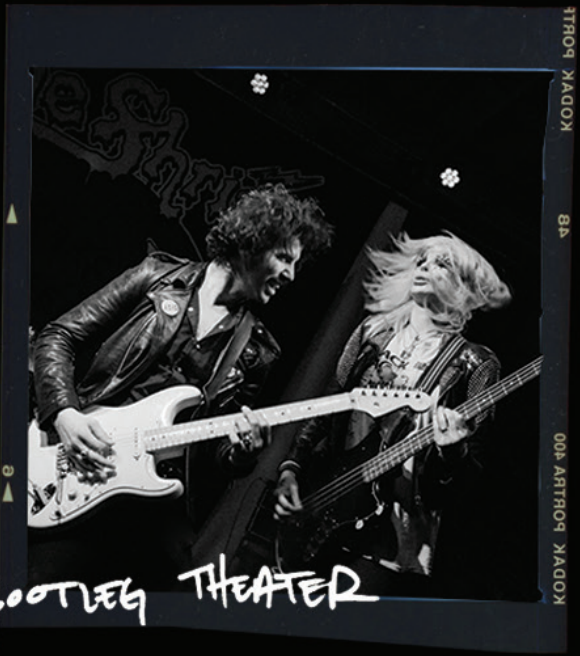
whats been happening at Obey...



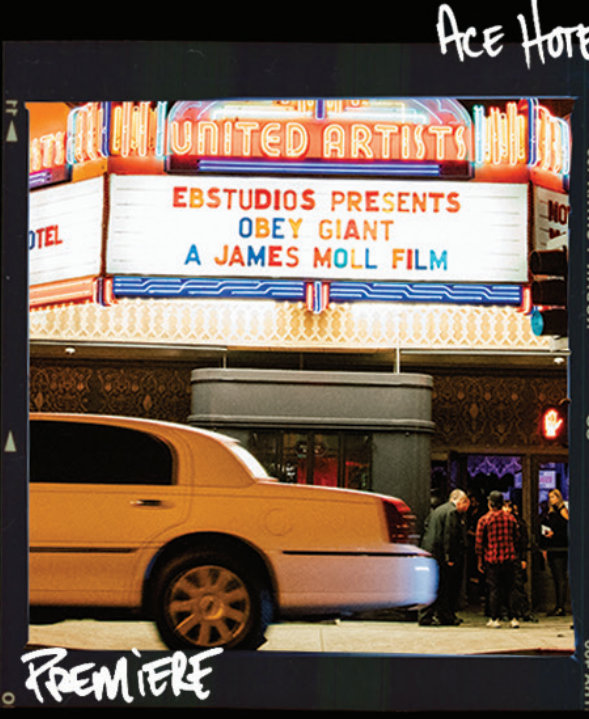
THE SHRINE 7" VINYL



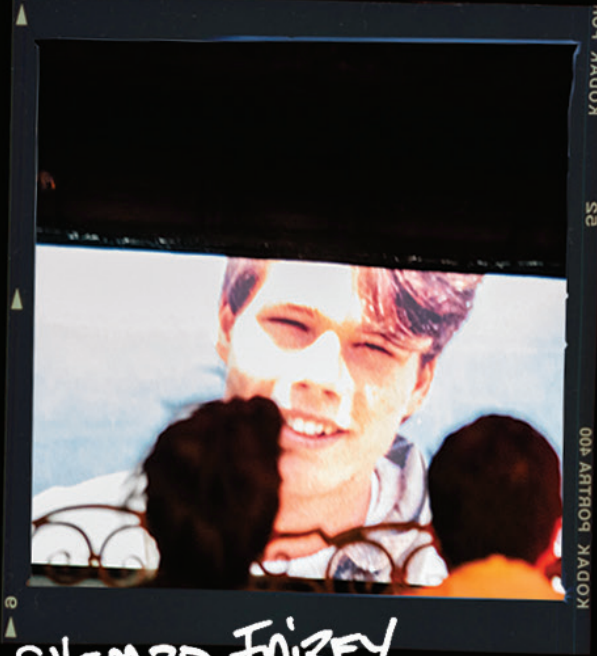
BOOTLEG THEATER



HUW DOCUMENTARY PREMIERE



ACE HOTEL



SHEPARD FAIREY

THE DIRTY FENCES LIVE







MISFITS POP-UP



WOMEN'S MARCH



DAMAGED show OBEY GIANT





# BUY FAIR.




# BE FAIR.

**FAIR TRADE**







FAIR TRADE IS A MARKET-BASED APPROACH THAT EMPOWERS FACTORY WORKERS AND FARMERS TO FIGHT POVERTY, PRODUCE QUALITY PRODUCTS, PROTECT THE ENVIRONMENT AND BUILD STRONG THRIVING COMMUNITIES FOR GENERATIONS TO COME. AT THE SAME TIME, FAIR TRADE USA'S FAIR TRADE CERTIFIED™ LABEL EMPOWERS YOU, THE CONSUMER, WITH THE KNOWLEDGE THAT YOUR PURCHASE HAS A POSITIVE IMPACT ON THE PEOPLE WHO SEW AND GROW THE PRODUCTS YOU LOVE. FOR EVERY OBEY FAIR TRADE CERTIFIED™ PRODUCT SOLD, A PERCENTAGE IS PAID DIRECTLY TO A SPECIAL FUND FOR THE WORKERS THAT CREATE OUR GOODS. THEY DECIDE COLLECTIVELY HOW TO SPEND THESE FUNDS BASED ON THE COMMUNITY'S GREATEST NEEDS: FROM SCHOLARSHIPS AND SCHOOL BUSES, TO MEDICAL CARE AND DISASTER RELIEF SERVICES.

"SOCIAL RESPONSIBILITY AND JUSTICE HAVE ALWAYS BEEN VERY IMPORTANT TO OBEY IN BOTH MESSAGE AND PRACTICE. WE WORK WITH MANUFACTURERS THAT PROVIDE A FAIR WAGE AND ETHICAL WORKING CONDITIONS, AND HAVE NOW MADE THE FURTHER STEP TO BECOME AN OFFICIAL FAIR TRADE USA PARTNER ([WWW.FAIRTRADEUSA.ORG](http://WWW.FAIRTRADEUSA.ORG)). OUR FAIR TRADE CERTIFIED™ GARMENTS ARE PRODUCED IN FACTORIES THAT OPERATE AGAINST RIGOROUS SOCIAL, ENVIRONMENTAL AND ECONOMIC STANDARDS, WHERE WORKERS CAN DO THEIR JOBS WITH PRIDE AND DIGNITY. FOR EVERY FAIR TRADE CERTIFIED PRODUCT SOLD, WORKERS EARN MORE MONEY TO FIGHT POVERTY AND FUND COMMUNITY DEVELOPMENT. OUR HOPE IS NOT ONLY TO BENEFIT THE WORKERS OF THE FAIR TRADE FACTORIES, BUT TO LEAD BY EXAMPLE AND PROMOTE THE EXPANSION OF THE FAIR TRADE APPAREL PROGRAM."

- SHEPARD FAIREY



Albany Hat  
Bunker Jacket



Bunker Anorak  
Vandal Pant  
Rising Web Belt



Kale Fur Bomber  
Cashed Out Pant



Drop Out Sling Bag  
Ava Jumpsuit





Mind Games Pullover  
Cerise Track Pant



COLLECTION  
1



Humboldt Beanie  
Mirage Sweater Crew





Mind Games Zip  
Casbah pant



Mind Games Zip



Humboldt Beanie  
Mirage Sweater Crew  
Gatecrasher Skirt



Lyndale Beanie  
Foxtrot Parka  
Ollie Plaid Dress  
Shrunken Tee





Briean Beanie  
Helter Turtleneck  
Lackey Pant



Briean Beanie  
Helter Turtleneck



Lyndale Beanie  
Foxtrot Parka  
Ollie Plaid Dress  
Shrunken Tee



Lyndale Beanie  
Foxtrot Parka  
Ollie Plaid Dress  
Shrunken Tee





Brian Beanie  
Helter Turtleneck  
Lackey Pant





Benice Shirt





Casbah Overall  
Obey yourself Artist Series  
LS Salvage Tee



Casbah Overall  
Obey yourself Artist Series  
LS Salvage Tee



Benice Shirt  
Casbah Pant  
Lynx Bralette



Polaski Beanie  
Sienna Jacket  
Dolores Crew





## COLLECTION I

### SAVAGE CITY MOTO

- Sexy cropped and fitted genuine leather biker jacket
- Heavy metal zipper details throughout
- Features fine quality New Zealand pebbled sheepskin leather
- Content: SHELL: 100% Leather; LINING: 100% Polyester

221800251



A.

	COLOR	XS	S	M	L	XL
A.	BLACK					

### JOEY VEGAN MOTO

- Feminine fit cropped moto jacket with belt detail
- Features removable shearling collar detail and heavy metal trims throughout
- Content: SHELL: 100% PU; LINING: 100% Polyester; FAUX FUR: 100% Polyester

221800255



A.

	COLOR	XS	S	M	L	XL
A.	BLACK					

### KALE FUR BOMBER

- Relaxed fit faux fur bomber with collar
- Features shiny gold finish zip closure with pockets
- Fully lined
- Content: SHELL: 82% Acrylic / 18% Polyester; LINING: 100% Polyester

221800259



A.

	COLOR	XS	S	M	L	XL
A.	SAGE					

### SHAY FUR BOMBER

- Relaxed fit, cropped faux fur chubby bomber with collar
- Zip closure with shiny rose gold finish
- Features pockets
- Content: FAUX FUR: 100% Polyester; LINING: 100% Polyester

221800246



A.

	COLOR	XS	S	M	L	XL
A.	MINK					

### RUBY JACKET

- Oversized fit women's puffy jacket with pockets
- Features custom OBEY screenprints
- Water resistant
- Content: SHELL: 100% Polyester; FILLING: 100% Polyester

221800241

B.



A.

	COLOR	XS	S	M	L	XL
A.	BLACK					
B.	KHAKI LEOPARD					

### RUBY PANT

- High-waisted quilted track pant with feather weight fill
- Features custom OBEY embroidery
- Rib cuffs at hem
- RISE: 11"; LEG OPENING: 9"; INSEAM: 28"
- Content: SHELL: 100% Polyester; FILLING: 100% Polyester

242000065

B.



A.

	COLOR	XS	S	M	L	XL
A.	BLACK					
B.	KHAKI LEOPARD					

## COLLECTION I

### FOXTROT PARKA

- Relaxed women's fit, satin flight parka with pop lining
- Fully lined with insulation and cloud sherpa trims
- Water resistant
- Content: SHELL: 100% Nylon; LINING: 100% Polyester; FILLING: 100% Polyester

221800244



	COLOR	XS	S	M	L	XL
A.	SAGE					
B.	BLACK					

### BURNER BOMBER

- Relaxed women's fit, satin flight parka with pop lining
- Fully lined with insulation and cloud sherpa trims
- Water resistant
- Content: SHELL: 100% Nylon; LINING: 100% Polyester; FILLING: 100% Polyester

221800245



	COLOR	XS	S	M	L	XL
A.	BLACK					
B.	SAGE					

### BUNKER JACKET

- Insulated quilted bomber jacket with warm polar fleece lining
- Features custom OBEY embroidery
- Soft rib trim at neckline
- Content: SHELL: 100% Polyester; LINING: 100% Polyester; FILLING: 100% Polyester

221800260



	COLOR	XS	S	M	L	XL
A.	DRIP CAMO					
B.	DUSTY CORAL					

### BUNKER ANORAK

- Insulated half zip anorak with warm polar fleece lining
- Features custom OBEY embroidery
- Hidden hood under mock neck collar
- Content: SHELL: 100% Polyester; LINING: 100% Polyester; FILLING: 100% Polyester

221800261



	COLOR	XS	S	M	L	XL
A.	DUSTY CORAL					
B.	DRIP CAMO					

### OG SHERPA JACKET

- Relaxed fit denim trucker jacket with sherpa collar and body lining
- Features custom OBEY chenille embroidery
- Comes fully insulated
- Content: SHELL: 100% Cotton; LINING: 100% Polyester; FILLING: 100% Polyester

221800263

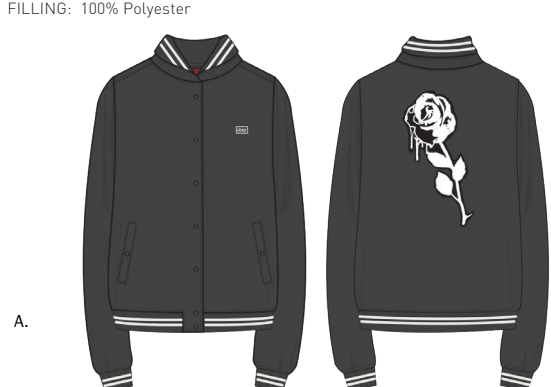


	COLOR	XS	S	M	L	XL
A.	FADED BLACK					

### DICEY JACKET

- Classic fit women's varsity jacket with roll shawl collar
- Features custom OBEY chenille embroidery
- Insulated with lightweight quilted lining for warmth
- Content: SHELL: 70% Polyester / 30% Wool; LINING: 100% Polyester; FILLING: 100% Polyester

221800264



	COLOR	XS	S	M	L	XL
A.	BLACK					

## COLLECTION I

### PISTOL JACKET

- Relaxed women's hooded military jacket with interior drawcord at waist
- Lined with insulation and cloud sherpa
- Water resistant
- Content: SHELL: 60% Cotton / 40% Polyester; LINING: 100% Polyester; FILLING: 100% Polyester

221800243



A.



	COLOR	XS	S	M	L	XL
A.	BLACK					
B.	FIELD CAMO					

### COVERT SHERPA JACKET

- Relaxed fit, women's coach's jacket in camo jacquard pattern and solid black sherpa
- Fully lined with pockets
- Custom patch at chest
- Content: FAUX FUR: 100% Polyester; LINING: 100% Polyester

221800242



A.



	COLOR	XS	S	M	L	XL
A.	CAMO					
B.	BLACK					

### SIENNA JACKET

- Long insulated stadium hooded jacket with cloud sherpa fleece lining
- Features custom OBEY screenprint and appliqué
- Comes in a super soft water resistant fabric
- Content: SHELL: 90% Polyester / 10% Nylon; LINING: 100% Polyester

221800262



A.



	COLOR	XS	S	M	L	XL
A.	KHAKI LEOPARD					
B.	BLACK					

### SIENNA ANORAK

- Relaxed fit women's popover hooded anorak
- Fully water resistant
- Comes in a solid and a custom OBEY print
- Content: 90% Polyester / 10% Nylon

221800266



A.



	COLOR	XS	S	M	L	XL
A.	BLACK					
B.	KHAKI LEOPARD					

### CASBAH JACKET

- Relaxed fit women's military M65 style jacket
- Features utility pockets and hidden hood
- Custom OBEY embroidered patch
- Content: 100% Cotton

221800249



A.



	COLOR	XS	S	M	L	XL
A.	BURNT OLIVE					
B.	KHAKI LEOPARD					

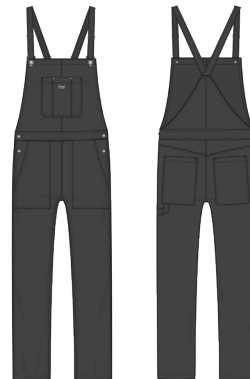
### CASBAH OVERALL

- Feminine fit overalls with straight leg
- Custom logo hardware and patch
- RISE: 10 1/4"; LEG OPENING: 17"; INSEAM: 32"
- Content: 100% Cotton

242020045



A.



	COLOR	24	25	26	27	28	29	30	31	32
A.	BLACK									
B.	KHAKI LEOPARD									

## COLLECTION I

### CERISE TRACK ZIP

- Classic fit, zip front, unlined track jacket with pockets
- Features custom OBEY taping detail
- Water resistant
- Content: 100% Polyester

221800258

B.



A.



	COLOR	XS	S	M	L	XL
A.	BLACK					
B.	RED					

### CERISE TRACK PANT

- High-waisted straight leg track pant with snap bottom detail and pockets
- Features custom OBEY taping detail
- Water resistant
- RISE: 10 1/4"; LEG OPENING: 18"; INSEAM: 32"
- Content: 100% Polyester

242000064

B.



A.



	COLOR	XS	S	M	L	XL
A.	BLACK					
B.	RED					

### CASHED OUT ZIP

- Slightly oversized tracksuit with piecing details at chest and sleeve
- Comes in a lightweight athletic fabric
- Features custom OBEY artwork at chest
- Content: 100% Polyester

211620070

B.



A.



	COLOR	XS	S	M	L	XL
A.	MALLARD					
B.	BLACK					

### CASHED OUT PANT

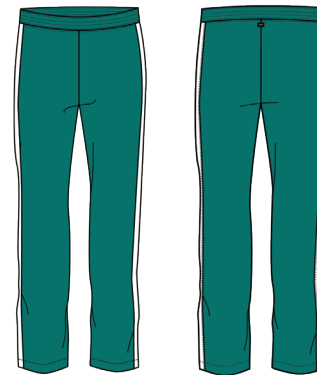
- Relaxed fit track pant with piecing details at side seams
- Comes in a lightweight athletic fabric
- Content: 100% Polyester

242030021

B.



A.



	COLOR	XS	S	M	L	XL
A.	MALLARD					
B.	BLACK					

### AVA JUMPSUIT

- Feminine fit mechanic's jumpsuit with pleating details
- High-waisted fit with blouson
- OBEY patch at chest
- RISE: 10 1/2"; LEG OPENING: 13 1/2"; INSEAM: 28"
- Content: 100% Viscose

242060011

B.



A.



	COLOR	XS	S	M	L	XL
A.	KHAKI MULTI					
B.	TEAL MULTI					

### BUSHWICK CARDIGAN

- Oversized fit sweater cardigan
- Features custom OBEY jacquard pattern
- Content: 80% Acrylic / 20% Wool

251010048

A.



	COLOR	XS	S	M	L	XL
A.	LEOPARD					

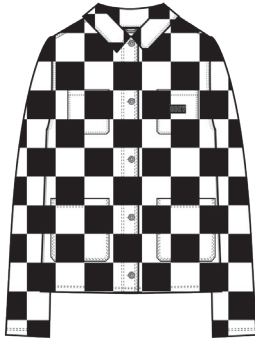
## COLLECTION I

### BISHOP JACKET

- Feminine fit, heavy twill workwear chore jacket
- Features custom OBEY patch at pocket
- Comes with a specialty OBEY print
- Content: 100% Cotton

221800257

A.



	COLOR	XS	S	M	L	XL
A.	CHECKER					

### MIND GAMES ZIP

- Bomber style zip front jacket with welt pockets
- Comes in a custom OBEY yarn dye velour
- Features patch at chest
- Content: 80% Cotton / 20% Polyester
- Fair Trade

211620074



A.



B.



	COLOR	XS	S	M	L	XL
A.	SAGE MULTI					
B.	WHITE MULTI					

### MIND GAMES PULLOVER

- Oversized hooded pullover sweatshirt
- Come in a custom OBEY yarn dye velour
- Features patch at chest
- Content: 80% Cotton / 20% Polyester
- Fair Trade

211610072



A.



B.



	COLOR	XS	S	M	L	XL
A.	WHITE MULTI					
B.	SAGE MULTI					

### LYNX DRESS

- Fitted long sleeve mini dress
- Comes in a super soft rayon spandex
- Features a custom OBEY elastic trim at side seams
- Content: 95% Rayon / 5% Spandex

401500254

A.



	COLOR	XS	S	M	L	XL
A.	JET BLACK					

### LYNX BRALETTE

- Triangle bralette with adjustable straps and metal closure at back
- Comes in a super soft rayon spandex
- Features custom OBEY elastic trim
- Content: 95% Rayon / 5% Spandex

231170027

A.



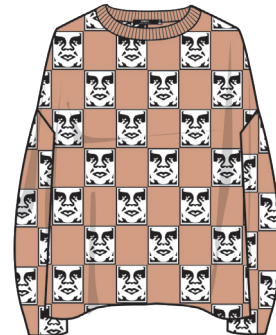
	COLOR	XS	S	M	L	XL
A.	JET BLACK					

### MIRAGE SWEATER CREW

- Oversized fit crew neck sweater
- Features a custom OBEY jacquard pattern
- Content: 100% Acrylic

251000078

A.

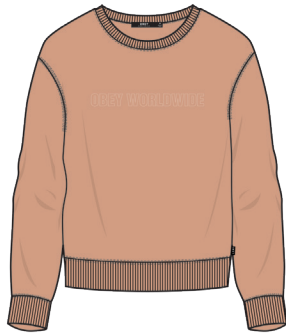


	COLOR	XS	S	M	L	XL
A.	DUSTY CORAL MULTI					

## COLLECTION I

### ANNA CREW

- Slightly oversized drop shoulder crew neck fleece
- Comes in a soft, heavyweight brushed back fleece
- Features a custom OBEY embroidery at chest
- Content: 88% Cotton / 12% Polyester
- Fair Trade



A.

211600106



	COLOR	XS	S	M	L	XL
A.	DUSTY CORAL					
B.	COWHIDE					
C.	DARK INDIGO					

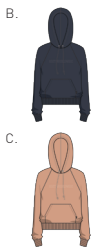
### ANNA HOOD

- Slightly shrunken fit hooded fleece
- Comes in a soft, heavyweight brushed back fleece
- Features a custom OBEY embroidery at chest
- Content: 88% Cotton / 12% Polyester
- Fair Trade



A.

211610070



	COLOR	XS	S	M	L	XL
A.	COWHIDE					
B.	DARK INDIGO					
C.	DUSTY CORAL					

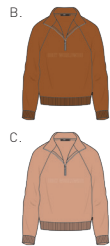
### ASHMORE PULLOVER

- Half zip pullover with a custom obey embroidery at chest
- Comes in a soft heavy weight brushed back fleece
- Content: 88% Cotton / 12% Polyester
- Fair Trade



A.

211620072



	COLOR	XS	S	M	L	XL
A.	DARK INDIGO					
B.	COWHIDE					
C.	DUSTY CORAL					

### ANNIE CREW

- Slightly oversized, drop shoulder crew neck fleece
- Comes in a soft, heavyweight brushed back fleece
- Features a custom OBEY embroidery at chest
- Content: 88% Cotton / 12% Polyester
- Fair Trade



A.

211600108



	COLOR	XS	S	M	L	XL
A.	BLACK					
B.	SAGE					
C.	ORANGE					

### ANNIE HOOD

- Slightly shrunken fit hooded fleece
- Comes in a soft heavyweight brushed back fleece
- Content: 88% Cotton / 12% Polyester
- Fair Trade



A.

211610071



	COLOR	XS	S	M	L	XL
A.	SAGE					
B.	ORANGE					
C.	BLACK					

### ANYA PULLOVER

- Slightly shrunken fit hooded fleece
- Comes in a soft, heavyweight brushed back fleece
- Features a custom OBEY embroidery at chest
- Content: 88% Cotton / 12% Polyester
- Fair Trade



A.

211620073



	COLOR	XS	S	M	L	XL
A.	ORANGE					
B.	SAGE					
C.	BLACK					



## COLLECTION I

### CATSKILLS JACKET

- Relaxed fit women's workwear field jacket
- Features utility pockets and flannel lining
- Content: SHELL: 100% Cotton; LINING: 65% Polyester / 35% Rayon

221800250



	COLOR	XS	S	M	L	XL
A.	WINE					
B.	PINE					

### BRIGHTON SWEATER DRESS

- Oversized drop shoulder crew neck sweater dress
- Features embroidered logo at back
- Comes in a custom OBEY camo jacquard pattern
- Content: 100% Cotton

401500262



	COLOR	XS	S	M	L	XL
A.	BLACK MULTI					

### DOLORES CREW

- Oversized crew neck sweatshirt
- Comes in a super soft sherpa fleece
- Featuring a custom OBEY embroidery at chest
- Content: 100% Polyester

211600107

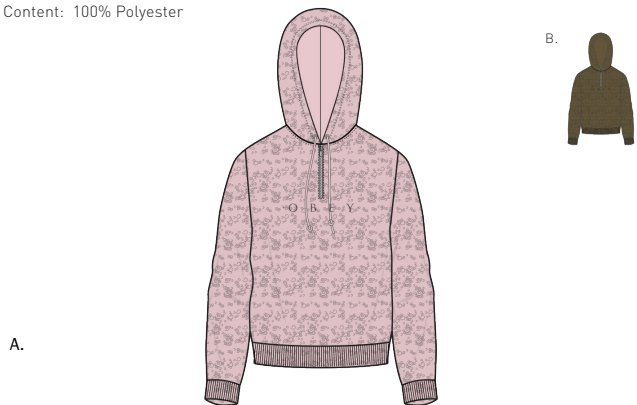


	COLOR	XS	S	M	L	XL
A.	CLOUD WHITE					
B.	BLACK					

### DOLORES PULLOVER

- Relaxed fit, hooded half zip pullover
- Comes in a super soft sherpa fleece
- Features a hood and drawcord
- Content: 100% Polyester

211620039



	COLOR	XS	S	M	L	XL
A.	PINK					
B.	OLIVE					

### OLLIE PLAID DRESS

- Body-skimming shift dress with button front detail
- Wear alone or layer a shirt underneath
- Comes in a classic menswear Glen plaid
- Content: 60% Cotton / 40% Polyester

401500268

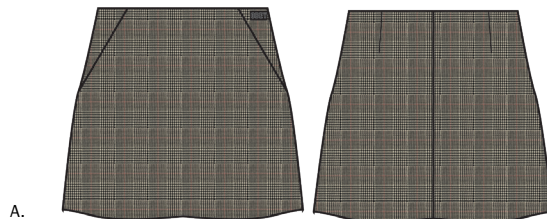


	COLOR	XS	S	M	L	XL
A.	BLACK MULTI					

### OLLIE PLAID SKIRT

- High-waist mini skirt with a slight A-line fit
- Comes in a classic menswear Glen plaid
- Content: SHELL: 60% Cotton / 40% Polyester; LINING: 100% Polyester

411550066



	COLOR	24	25	26	27	28	29	30	31	32
A.	BLACK MULTI									

## COLLECTION I

### HELTER CREW

- Oversized fit, drop shoulder crew neck sweater
- Features custom OBEY ombre yarns
- Content: 90% Acrylic / 10% Wool

251000081

A.



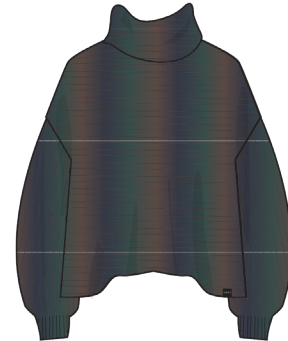
	COLOR	XS	S	M	L	XL
A.	SPRUCE MULTI					

### HELTER TURTLENECK

- Oversized cropped turtleneck sweater
- Features custom OBEY ombre yarns
- Content: 90% Acrylic / 10% Wool

251000080

A.



	COLOR	XS	S	M	L	XL
A.	SPRUCE MULTI					

### ZURICH CREW

- Oversized raglan crew neck sweater
- Features a custom OBEY Fair Isle pattern
- Content: 100% Acrylic

251000079

A.



	COLOR	XS	S	M	L	XL
A.	HEATHER CHARCOAL MULTI					

### NOVEL ZIP JACKET

- Oversized fit, cropped '90s style, zip-up sweater jacket
- Features a cozy mock neck and pockets
- Custom embroidery at chest
- Content: 60% Cotton / 40% Acrylic

251010045

A.



	COLOR	XS	S	M	L	XL
A.	BLACK					

### BENICE SHIRT

- Oversized winter weight fit denim shirt with chest pocket
- Features custom OBEY embroidery
- Content: 100% Cotton

281200096

A.



	COLOR	XS	S	M	L	XL
A.	INDIGO					

### COLE TOP

- Relaxed fit, long raglan sleeve thermal top
- Comes in a chunky waffle knit
- Features a custom OBEY patch at chest
- Content: 100% Cotton
- Fair Trade

231030075



A.



B.



	COLOR	XS	S	M	L	XL
A.	BLACK					
B.	OLIVE					



## PANTS / OVERALLS

### LACKEY PANT

- High-waist wide leg trousers cut sexy throughout the hips, opens up mid-thigh to a straight leg
- Heavier weight twill with crisp finish
- Comes in a cropped, flood inseam with a clean finish hem
- RISE: 11 3/4"; LEG OPENING: 18"; INSEAM: 28"
- Content: 60% Cotton / 39% Polyester / 1% Spandex

242020044



A.



	COLOR	24	25	26	27	28	29	30	31	32
A.	DULL BLUE									
B.	BLACK									

### CASBAH PANT

- High-waisted wide leg trouser cut sexy through the hips, opening to a straight leg mid thigh
- Soft washed midweight twill
- Comes in a cropped flooded inseam with a clean finished hem
- RISE: 12"; LEG OPENING: 18 1/2"; INSEAM: 27"
- Content: 100% Cotton

242020046



A.



	COLOR	24	25	26	27	28	29	30	31	32
A.	PINE									
B.	KHAKI LEOPARD									

### VULTURE PANT

- Relaxed fit elastic waist trousers with interior drawcord detail
- Cut in a mid weight twill
- Comes in a custom OBEY camo print and solid dusty olive
- RISE: 10 1/2"; LEG OPENING: 12 1/2"; INSEAM: 27 1/2"
- Content: 60% Cotton / 40% Polyester

242000062



A.



	COLOR	XXS	XS	S	M	L	XL
A.	FIELD CAMO						
B.	BURNT OLIVE						

### CHARLIE PLAID PANT

- Cropped, relaxed fit pleated trouser with zip fly and elastic at back waist for comfort
- Cut in a crisp yarn-dyed Glen plaid
- RISE: 10 1/4"; LEG OPENING: 13 3/4"; INSEAM: 26"
- Content: 60% Cotton / 40% Polyester

242000061

A.



	COLOR	XXS	XS	S	M	L	XL
A.	BLACK MULTI						

### OLLIE PLAID OVERALL

- Feminine tailored fit, slim leg overall
- Cut in a crisp Glen plaid twill woven
- RISE: 10 1/4"; LEG OPENING: 11 1/2"; INSEAM: 27"
- Content: 60% Cotton / 40% Polyester

242020040

A.

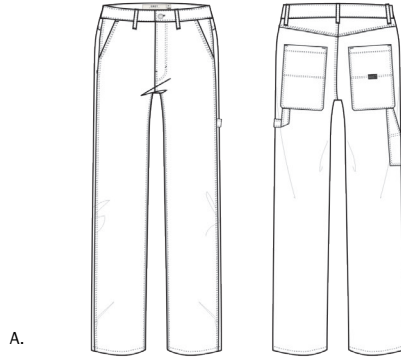


	COLOR	24	25	26	27	28	29	30	31	32
A.	BLACK MULTI									

## DENIM

### VANDAL PANT

- High-waisted wide leg denim painter's pant
- Cropped hem
- Features carpenter details
- RISE: 11 1/2"; LEG OPENING: 18"; INSEAM: 30"
- Content: 100% Cotton



	COLOR	24	25	26	27	28	29	30	31	32
A.	WHITE									

242020047

### SUNDAYS SLIM JEAN

- High-rise, slim fit, five-pocket rigid jean
- Straight hips, slim fit through the thigh and tapers at the ankle
- Features a cropped inseam that hits above the ankle
- RISE: 11 1/4"; LEG OPENING: 11 3/4"; INSEAM: 28 1/2"
- Content: 100% Cotton



	COLOR	24	25	26	27	28	29	30	31	32
A.	FADED BLACK									
B.	GREY									
C.	LIGHT INDIGO									

242010039



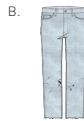
### SUNDAYS STRAGGLER

- High-rise, straight leg, five-pocket rigid jean
- Straight hips, slim fit through the thigh and opens up past the knee
- Features custom OBEY embroidery at pocket, custom wash and slashed raw, cropped, flooded hem
- RISE: 11"; LEG OPENING: 13 3/4"; INSEAM: 27 1/2"
- Content: 100% Cotton



	COLOR	24	25	26	27	28	29	30	31	32
A.	DUSTY BLACK									
B.	BLEACHED INDIGO									

242010038



### SLASHER SKINNY JEAN

- High-waisted, skinny fit, five-pocket stretch denim
- Features a cropped inseam that hits above the ankle
- Slashes are raw cut at the knees
- RISE: 10 1/2"; LEG OPENING: 9 1/2"; INSEAM: 27 1/2"
- Content: 99% Cotton / 1% Spandex



	COLOR	24	25	26	27	28	29	30	31	32
A.	VINTAGE BLACK									
B.	DARK INDIGO									

242010043









Vulture BDU Jacket  
Rosa Dress



Kale Fur Bomber  
Kinzie Dress





Raven Dress





Raven Dress



Shay Fur Bomber  
Norwood Dress



Comfy Zip Hood  
Corbett Jumpsuit



Corbett Jumpsuit





Jeanne Sherpa Jacket  
Gatecrasher Pant  
Ronnie Crew





## COLLECTION II

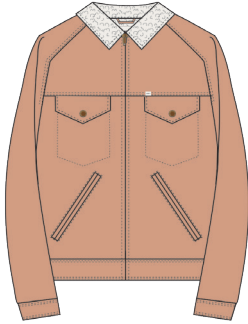
### JEANNE SHERPA JACKET

- Feminine fit canvas zip-up jacket with sherpa details
- Insulated for warmth with quilted sleeves
- Comes in a specialty stone wash
- Content: SHELL: 100% Cotton; FAUX FUR: 100% Polyester; SLEEVE LINING: 100% Polyester

221800253



A.



	COLOR	XS	S	M	L	XL
A.	DUSTY CORAL					
B.	BLACK					

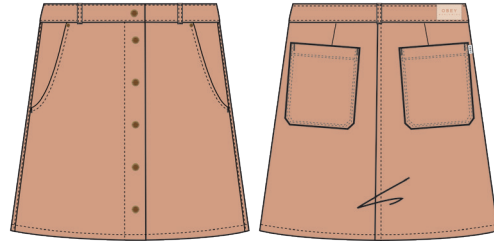
### GATECRASHER SKIRT

- High-waist snap front canvas skirt
- Comes in a custom wash
- CB LENGTH: 16 1/2"
- Content: 100% Cotton

411550063



A.



	COLOR	24	25	26	27	28	29	30	31	32
A.	DUSTY CORAL									
B.	BLACK									

### CAFFE BLOUSE

- Sexy button-down ruffle sleeved blouse
- Cut in a soft silky rayon woven
- Comes in custom OBEY prints
- Content: 100% Rayon

281200098



A.



	COLOR	XS	S	M	L	XL
A.	BLACK MULTI					
B.	RUST MULTI					

### DARCEY WRAP DRESS

- Sexy '70s style wrap front long sleeved dress
- Cut in a soft silky rayon woven
- Comes in a custom OBEY print
- Content: 100% Rayon

401500261



A.

	COLOR	XS	S	M	L	XL
A.	RUST MULTI					

### DOMINIQUE DRESS

- Gilded gold melanged black lace slip dress
- Comes fully lined with adjustable straps
- Back zip entry
- Content: SHELL: 60% Cotton / 20% Rayon / 20% Nylon; LINING: 100% Polyester

401500269

A.



	COLOR	XS	S	M	L	XL
A.	GOLD					

### RAVEN DRESS

- Long sleeve low back dress with a button up detail at center back
- Comes in a knit lace
- Content: 92% Nylon / 8% Spandex; LINING: 65% Rayon / 35% Polyester

401500274

A.



	COLOR	XS	S	M	L	XL
A.	BLACK					

## COLLECTION II

### VULTURE BDU JACKET

- Oversized, cropped women's military shirt jacket
- Features utility chest pockets and a custom wash
- Custom OBEY embroidered patch
- Content: 60% Cotton / 40% Polyester

221160022

B.



A.



	COLOR	XS	S	M	L	XL
A.	FIELD CAMO					
B.	BURNT OLIVE					

### FITZGERALD SHIRT

- Classic button-down feminine blouse
- Comes in a custom OBEY leopard jacquard woven fabric
- Content: 95% Polyester / 5% Spandex

281200099

A.



	COLOR	XS	S	M	L	XL
A.	SAGE					

### AMELIA DRESS

- Flutter sleeve wrap dress with tie back detail at waist
- Low, plunging front neckline with slight crossover
- Back zip entry
- Content: SHELL: 55% Viscose / 45% Rayon; LINING: 100% Polyester

401500271

A.



	COLOR	XS	S	M	L	XL
A.	BLACK					

### FITZGERALD DRESS

- Body-skimming midi dress with tie back waist detail
- Split cap sleeves with crossover detail and side slit opening
- Comes in a custom OBEY leopard jacquard woven fabric
- Content: 95% Polyester / 5% Spandex

401500272

A.



	COLOR	XS	S	M	XL
A.	SAGE				

### PALMER DRESS

- Relaxed, blouson fit long sleeve dress with front placket
- Features smocked elastic waist and cuff details
- Neckline comes with soft draped gathers
- Content: SHELL: 55% Viscose / 45% Rayon; LINING: 100% Polyester

401500270

A.



	COLOR	XS	S	M	L	XL
A.	BLACK					

### NORWOOD DRESS

- '80s style fitted bodycon dress with a sweetheart neckline
- Comes in a stretch velvet
- Content: 95% Polyester / 5% Spandex

401500273

A.



	COLOR	XS	S	M	L	XL
A.	SAGE					

## COLLECTION II

### ROSA DRESS

- Button-down shift dress with ruched neckline
- Cut in an amazingly soft rayon woven fabric
- Comes in a custom OBEY print
- Content: 100% Rayon

401500258

A.



	COLOR	XS	S	M	L	XL
A.	BLACK MULTI					

### ST. CLAIRE SHIRT

- Classic button-down blouse in an amazingly soft and drapey rayon woven fabric
- Comes in custom OBEY prints
- Content: 100% Rayon

281200097

A.



B.



	COLOR	XS	S	M	L	XL
A.	BLACK MULTI					
B.	DARK INDIGO MULTI					

### KINZIE DRESS

- Fitted wrap front dress with V-neck detail and asymmetrical hem
- Comes in a stretch lightweight french terry
- Content: 94% Cotton / 6% Spandex

401500267



A.



B.



	COLOR	XS	S	M	L	XL
A.	COWHIDE					
B.	BLACK					

### KINZIE TOP

- Fitted mock neck long sleeve top
- Comes in a stretch lightweight french terry
- Content: 94% Cotton / 6% Spandex

231030077



A.



B.



	COLOR	XS	S	M	L	XL
A.	BLACK					
B.	COWHIDE					

### PALMER TOP

- Oversized long sleeve thermal top
- Comes in a soft medium weight thermal knit
- Content: 96% Cotton / 4% Spandex

231030078



A.



B.



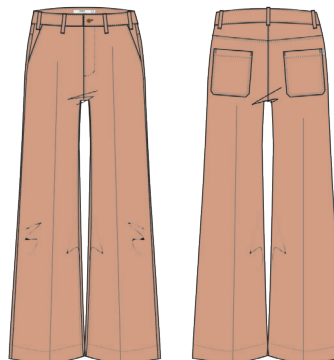
	COLOR	XS	S	M	L	XL
A.	HEATHER CHARCOAL					
B.	DUSTY CORAL					

### GATECRASHER PANT

- High-waist, wide leg canvas sailor trouser
- Cropped hem
- RISE: 11 1/4"; LEG OPENING: 20"; INSEAM: 26"
- Content: 100% Cotton

242020043

A.



	COLOR	24	25	26	27	28	29	30	31	32
A.	DUSTY CORAL									

## COLLECTION II

### RONNIE CREW

- Cropped and boxy crew neck sweater with drop shoulder
- Comes in a super soft, fuzzy and warm yarn
- Content: 13% Mohair / 13% Wool / 33% Acrylic / 36% Nylon / 5% Spandex

251000074

A.



	COLOR	XS	S	M	L	XL
A.	OAT					

### HYDRA TUBE TOP

- '90s style tube top
- Comes in a soft velour knit
- Features a custom OBEY embroidery at chest
- Content: 80% Cotton / 20% Polyester
- Fair Trade

231140001



A.



	COLOR	XS	S	M	L	XL
A.	DARK INDIGO					

### SILVERLAKE PANT

- High-waist, wide leg, cropped trouser with pleated front
- A feminine menswear trouser silhouette that has the fullness of a skirt with the ease of a culotte pant
- Comes in a dark plaid soft woven
- RISE: 15"; LEG OPENING: 28"; INSEAM: 23"
- Content: 100% Lyocell

242000063

A.



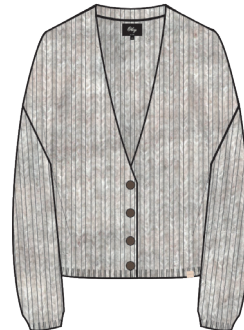
	COLOR	XS	S	M	L	XL
A.	NAVY MULTI					

### RONNIE CARDIGAN

- Relaxed fit button front cardigan
- Comes in a super soft, fuzzy and warm yarn
- Content: 13% Mohair / 13% Wool / 33% Acrylic / 36% Nylon / 5% Spandex

251010044

A.



	COLOR	XS	S	M	L	XL
A.	OAT					

### HYDRA TOP

- Fitted long sleeve bodysuit with low back detail
- Comes in a soft velour knit
- Features a custom OBEY embroidery at chest
- Content: 80% Cotton / 20% Polyester
- Fair Trade

231120030



A.



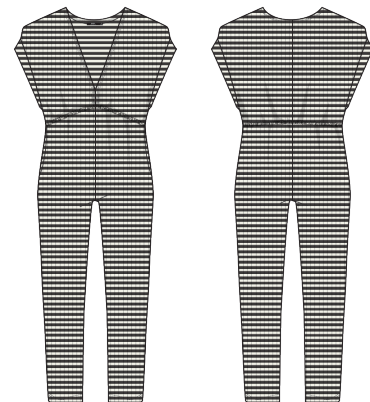
	COLOR	XS	S	M	L	XL
A.	DARK INDIGO					

### CORBETT ROMPER

- Body-skimming romper with low V-neck and elastic empire waist back detail
- Comes in a custom OBEY yarn-dyed stripe
- Features onseam pockets
- Content: 95% Rayon / 5% Spandex

242060007

A.



	COLOR	XS	S	M	L	XL
A.	BLACK MULTI					

## LOUNGE

### COMFY CREATURES CREW

- Classic fit raglan crew neck fleece with topstitch details
- Cut from the softest comfy fleece fabrication
- Includes OBEY specialty labels at hem and interior neck
- Content: 60% Cotton / 40% Polyester

211600082



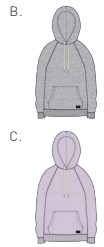
A.

	COLOR	XS	S	M	L	XL
A.	IRIS					
B.	HEATHER GREY					
C.	MARSHMALLOW					

### COMFY PULLOVER HOOD

- Relaxed fit raglan sleeve pullover hoodie with a kanga pocket
- Cut from the softest comfy fleece fabrication
- Includes OBEY specialty labels at hem and interior neck
- Content: 60% Cotton / 40% Polyester

211610064



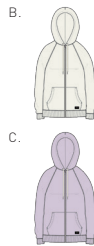
A.

	COLOR	XS	S	M	L	XL
A.	MARSHMALLOW					
B.	HEATHER GREY					
C.	IRIS					

### COMFY ZIP HOOD

- Relaxed fit raglan sleeve zip-up hoodie with a kanga pocket
- Cut from the softest comfy fleece fabrication
- Includes OBEY specialty labels at hem and interior neck
- Content: 60% Cotton / 40% Polyester

211640024



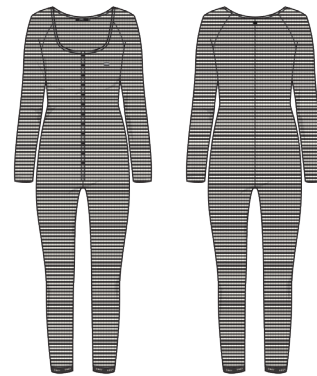
A.

	COLOR	XS	S	M	L	XL
A.	HEATHER GREY					
B.	MARSHMALLOW					
C.	IRIS					

### CORBETT JUMPSUIT

- Long sleeve button up jumpsuit featuring a custom OBEY elastic trim at leg opening
- Comes in a custom OBEY yarn-dyed stripe
- Content: 95% Rayon / 5% Spandex

242060010



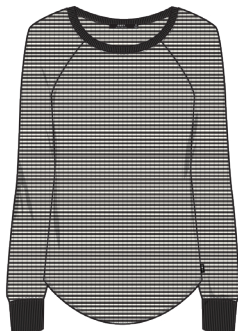
A.

	COLOR	XS	S	M	L	XL
A.	BLACK MULTI					

### CORBETT TOP

- Fitted long sleeve rib top with contrast rib on neck and cuffs
- Comes in a custom OBEY yarn-dyed stripe
- Content: 95% Rayon / 5% Spandex

231030074



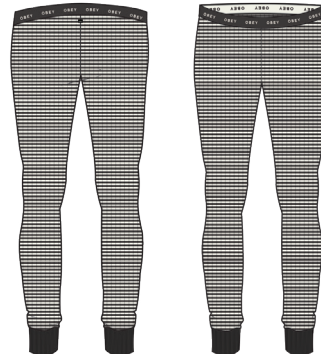
A.

	COLOR	XS	S	M	L	XL
A.	BLACK MULTI					

### CORBETT PANT

- Fitted leggings with contrast rib cuffs and a custom OBEY elastic trim at waistband
- Comes in a custom OBEY yarn-dyed stripe
- Content: 95% Rayon / 5% Spandex

242050008



A.

	COLOR	XS	S	M	L	XL
A.	BLACK MULTI					



## DENIM FIT GUIDE

### SUNDAYS SLIM JEAN

- High-rise
- Fitted through hips,
- Relaxes through thigh
- Tapers at ankle
- Inseam: 29"
- Leg opening: 11 3/4"



### SLASHER SKINNY JEAN

- High-rise
- Fitted through thigh
- Tapers at ankle
- Inseam: 27 1/2"
- Leg opening: 10"



## DENIM / PANT FIT GUIDE

### PAINTERS FIT

- High-rise
- Straight leg
- Rigid
- Cropped
- Inseam: 30"
- Leg opening: 18"



### SAILOR FIT

- Gate Crasher Pant
- High Waisted
- Rigid
- Wide Leg
- Cropped



## PANT FIT GUIDE

### TROUSER FIT

- Lackey Pant
- Casbah Pant
- High Waisted
- Rigid
- Straight leg
- Cropped



### TRAVELER FIT

- Vulture Pant
- Cashed Out Pant
- Relaxed fit
- High Rise
- Elastic Waist
- Tapered leg





A  
C  
C  
E  
S  
S  
O  
R  
I  
E  
S

Drop Out Sling Bag  
Ava Jumpsuit





## ACCESSORIES

### DROPOUT WAISTPACK

- Waistpack with double zip entry pockets
- Comes in sturdy flight satin with webbing straps
- Features large OBEY embroidery
- Content: 100% Nylon; Webbing/Lining: 100% Polyester

200010162



	COLOR	O/S				
A.	MALLARD					
B.	BLACK					

### DROPOUT BACKPACK

- Classic backpack shape with a main zipper compartment and front zipper pouch
- Comes in flight satin and features custom OBEY embroidery
- Content: 100% Nylon; Webbing/Lining: 100% Polyester

200010163



	COLOR	O/S				
A.	BLACK					
B.	MALLARD					

### CONTROLLER WAISTPACK

- Sling bag waistpack with double entry pockets
- Comes in flight satin and features OBEY mil spec label at front
- Strong webbing belt with adjustable buckle clasp closure
- Content: 100% Nylon; Webbing/Lining: 100% Polyester

200010144



	COLOR	O/S				
A.	BLACK					
B.	CANTEEN					
C.	YELLOW					

### CONTROLLER BOOKBAG

- Military-inspired backpack with multiple zip compartments
- Comes in a sturdy flight satin with webbing straps
- Content: 100% Nylon; Webbing/Lining: 100% Polyester

200010159



	COLOR	O/S				
A.	YELLOW					
B.	BLACK					
C.	CANTEEN					

### CONTROLLER MESSENGER BAG

- Military-inspired messenger bag with a cinch and zip closure and front patch pockets
- Comes in flight satin and features OBEY mil spec label at front
- Features adjustable webbing shoulder straps
- Content: 100% Nylon; Webbing/Lining: 100% Polyester

200010160

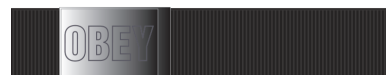


	COLOR	O/S				
A.	CANTEEN					
B.	BLACK					

### RIISING WEB BELT

- Webbing belt with metal buckle that features OBEY logo
- Content: 60% Cotton/ 40% Polyester

200400007



	COLOR	O/S				
A.	BLACK					
B.	OLIVE					
C.	ORANGE					

## ACCESSORIES

### VERNON BEANIE II

- Fine knit gas station beanie with rolled cuff
- Leather OBEY fashion label at center front
- Content: 100% Acrylic

200030072

### VERNON CHECK BEANIE

- Our best-selling beanie is back in a checkered jacquard pattern
- Comes with a custom OBEY label at center front
- Content: 100% Acrylic

200030090



### HUMBOLDT BEANIE

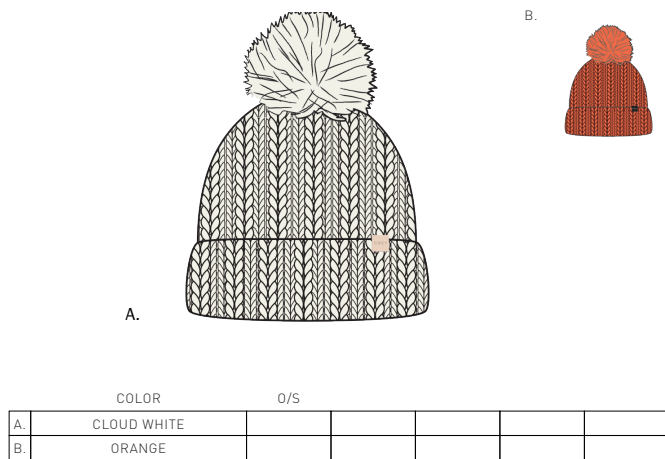
- Chunky knit beanie with a faux fur pom-pom
- Features a custom OBEY leather label
- Content: 100% Acrylic

200030093

### CLEARWATER BEANIE

- Classic shape beanie with pom-pom detail
- Comes in a solid and camo jacquard with custom OBEY artwork
- Content: 100% Acrylic

200030092



### ANYA HAT

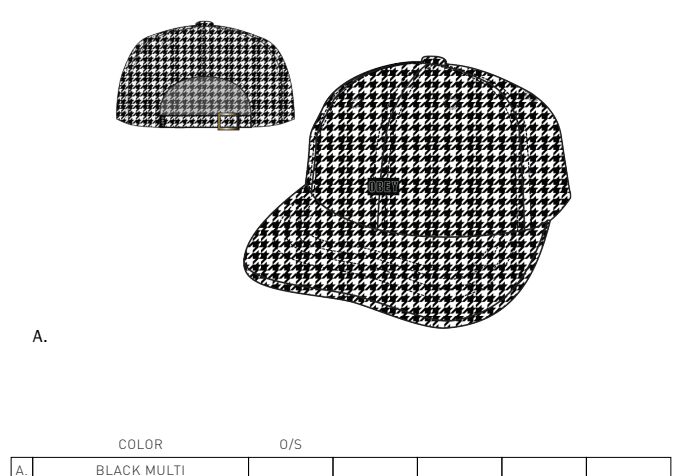
- Polar fleece dad hat with velcro closure
- Features a custom OBEY patch at center front
- Velcro features OBEY logo heatstamp
- Content: 100% Polyester

200140124

### SCOTTY HAT

- Classic baseball hat with adjustable self tab at back
- Comes in a yarn-dyed herringbone with custom OBEY patch
- Content: 100% Polyester

200140115





## ACCESSORIES

### BRIEAN BEANIE

- Fine knit gas station beanie with rolled cuff
- Leather OBEY fashion label at center front
- content: 100% Acrylic

200030075

### PULASKI BEANIE

- Faux fur beanie featuring custom OBEY embroidery at center front
- Content: 100% Polyester

200030094

A.



B.

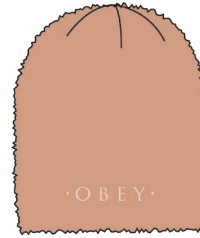


C.



	COLOR	O/S				
A.	BLACK					
B.	DUSTY CORAL					
C.	COWHIDE					

A.



B.



	COLOR	O/S				
A.	DUSTY CORAL					
B.	COWHIDE					

### LYNDALE BEANIE

- Pom-pom beanie with custom OBEY yarn-dyed patterns
- Features tonal OBEY embroidery at fold
- Content: 100% Acrylic

200030095

### CYDNEY BEANIE

- Pom-pom beanie with a custom OBEY yarn-dyed stripe
- Features tonal OBEY embroidery at fold
- Content: 100% Acrylic

200030089

A.

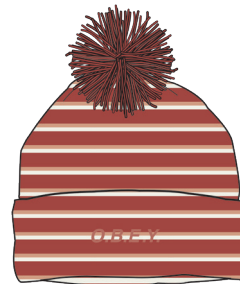


B.



	COLOR	O/S				
A.	DRIP CAMO					
B.	KHAKI LEOPARD					

A.



B.



	COLOR	O/S				
A.	RUST MULTI					
B.	MINK MULTI					

### ALBANY HAT

- Sherpa lined military hat
- Content: SELF: 100% Cotton SHERPA: 100% Acrylic

200140125

### BETSY BERET

- Classic beret in wool
- Features custom OBEY embroidery at center front
- Content: 100% Wool

200540005

A.



B.



	COLOR	O/S				
A.	SAGE					
B.	BONE					

A.



B.

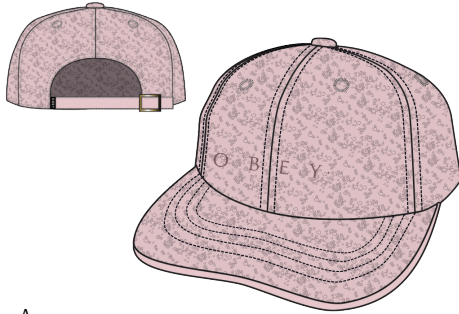


	COLOR	O/S				
A.	BLACK					
B.	MINK					

## ACCESSORIES

### DOLORES CAP

- Classic fit dad hat with curved brim and metal slider adjuster
- Cut in a lofty sherpa fabric
- Comes with custom OBEY embroidery
- Content: 100% Polyester



B.

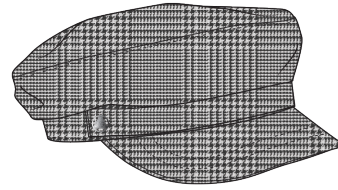


A.

	COLOR	O/S				
A.	PINK					
B.	BLACK					

### SAXON HAT

- Fisherman style cap with a custom OBEY metal rivet
- Comes in a medium weight yarn-dyed plaid
- Content: 100% Polyester



A.

	COLOR	O/S				
A.	BLACK MULTI					

### FLOYD SOCKS

- Three pack of assorted socks featuring custom OBEY patterns and artwork
- Content: #1: 70% Cotton/ 28% Polyester/ 2% Spandex;  
#2/3: 60% Cotton/ 38% Polyester/ 2% Spandex



A.

	COLOR	O/S				
A.	MULTI					

### ZEPHER SOCKS

- Lurex striped crew socks with custom OBEY logo at opening
- Content: 65% Nylon / 28% Polyester / 5% Lurex / 2% Elastane



A.

	COLOR	O/S				
A.	BLACK					

### CARMAN SOCK

- Crew sock with custom OBEY jacquard stripes and logo
- Content: 85% Cotton / 13% Polyester / 2% Spandex



A.

	COLOR	O/S				
A.	WHITE					

### WILD HEART SKINNY BELT

- Skinny belt with leopard print cow hair leather, shiny silver buckle and grommets
- Content: 100% Leather / BACKING 100% PU



A.

	COLOR	O/S				
A.	LEOPARD					

## ACCESSORIES

### AFROCENTRIC TOTE

- Classic canvas tote bag.
- Carry all your goodies in style with this custom OBEY graphic bag. 20" x 15" x 5"
- Content: 100% Cotton

200551324

A.



B.



	COLOR	O/S				
A.	BLACK					
B.	NATURAL					

### HOUSE OF OBEY TOTE

- Classic canvas tote bag.
- Carry all your goodies in style with this custom OBEY graphic bag. 20" x 15" x 5"
- Content: 100% Cotton

200551305

A.



	COLOR	O/S				
A.	NATURAL					

### POWER & EQUALITY 2

- Classic bandana with custom OBEY screenprint. 20" x 20"
- Content: 100% Cotton

207171366

A.



B.



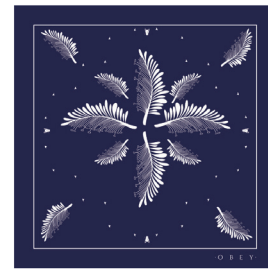
	COLOR	O/S				
A.	BLACK					
B.	RED					

### FEATHER BLOOM

- Classic bandana with custom OBEY screenprint. 20" x 20"
- Content: 100% Cotton

207171367

A.



B.



	COLOR	O/S				
A.	NAVY					
B.	YELLOW					

### CURIOUS KIDDOS

- Classic bandana with custom OBEY screenprint. 20" x 20"
- Content: 100% Cotton

207171351

A.



B.



	COLOR	O/S				
A.	BLACK					
B.	ROYAL BLUE					



ACCESSORIES

OBEY OUTLINE

- OBEY Outline pin with alloy finish enamel colored metal
- 2 locking backs to keep pin in place
- Content: 100% Alloy

200220020

OBEY 1990 FACE

- OBEY 1990 Face Pin with alloy finish enamel colored metal
- 2 locking backs to keep pin in place
- Content: 100% Alloy

100220047



A.

COLOR		O/S					
A.	BLACK						



A.

COLOR		O/S					
A.	BLACK / RED						

OBEY PYRAMID EYE

- OBEY Pyramid Eye pin with alloy finish and enamel colored metal
- 2 locking backs to keep pin in place
- Content: 100% Alloy

200220016



A.

COLOR		O/S					
	BLACK						

OBEY WOMEN'S WORLD WIDE II STAND

326000087

- Boutique friendly table display featuring minimal design and OBEY Worldwide logo



A.

COLOR		O/S				
A.	ASSORTED					

WOMEN'S WOOD TABLE STAND (SHORT)

326000056

- Boutique friendly table display featuring minimal design and OBEY Worldwide logo



A.

COLOR		O/S				
A.	ASSORTED					

OBEY PIN PACK 6

326000137

- 24 1" pins
- Featuring seasonal OBEY artwork. Perfect for hooking customers up at checkout



A.

COLOR		O/S				
A.	ASSORTED					

## CAD ROUND-UP

### JACKETS- 2218 / 2211



SAVAGE CITY MOTO  
221800251 / PAGE 16



JOEY VEGAN MOTO  
221800255 / PAGE 16



KALE FUR BOMBER  
221800259 / PAGE 16



SHAY FUR BOMBER  
221800246 / PAGE 16



RUBY JACKET  
221800241 / PAGE 16



FOXTROT PARKA  
221800244 / PAGE 17



BURNER BOMBER  
221800245 / PAGE 17



BUNKER JACKET  
221800260 / PAGE 17



BUNKER ANORAK  
221800261 / PAGE 17



OG SHERPA JACKET  
221800263 / PAGE 17



DICEY JACKET  
221800264 / PAGE 15



PISTOL JACKET  
221800243 / PAGE 18



COVERT SHERPA JACKET  
221800242 / PAGE 18



SIENNA JACKET  
221800262 / PAGE 18



SIENNA ANORAK  
221800266 / PAGE 18



CASBAH JACKET  
221800249 / PAGE 18



CERISE TRACK ZIP  
221800258 / PAGE 19



BISHOP JACKET  
221800257 / PAGE 20



CATSKILLS JACKET  
221800250 / PAGE 22



JEANNE SHERPA JACKET  
221800253 / PAGE 32



VULTURE BDU JACKET  
221160022 / PAGE 33

### SPECIALTY FLEECE- 2116



CASHED OUT ZIP  
211620070 / PAGE 19



MIND GAMES ZIP  
211620074 / PAGE 20



MIND GAMES PULLOVER  
211610072 / PAGE 20



ANNA CREW  
211600106 / PAGE 21



## CAD ROUND-UP

### SPECIALTY FLEECE- 2116 CONT'D



ANNA HOOD  
211610070 / PAGE 21



ASHMORE PULLOVER  
211620072 / PAGE 21



ANNIE CREW  
211600108 / PAGE 21



ANNIE HOOD  
211610071 / PAGE 21



ANYA PULLOVER  
211620073 / PAGE 21



DOLORES CREW  
211600107 / PAGE 22



DOLORES PULLOVER  
211620039 / PAGE 22



COMFY CREATURES CREW  
211600082 / PAGE 36



COMFY PULLOVER HOOD  
211610064 / PAGE 36

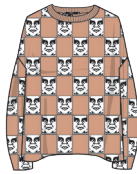


COMFY ZIP HOOD  
211640024 / PAGE 36

### SWEATERS 2510



BUSHWICK CARDIGAN  
251010048 / PAGE 19



MIRAGE SWEATER CREW  
251000078 / PAGE 20



HELTER CREW  
251000081 / PAGE 23



HELTER TURTLENECK  
251000080 / PAGE 23



ZURICH CREW  
251000079 / PAGE 23



NOVEL ZIP JACKET  
251010045 / PAGE 23



RONNIE CREW  
251000074 / PAGE 35



RONNIE CARDIGAN  
251010044 / PAGE 35

## CAD ROUND-UP

### DRESSES - 4015



LYNX DRESS  
401500254 / PAGE 20



BRIGHTON SWEATER DRESS  
401500262 / PAGE 22



OLLIE PLAID DRESS  
401500268 / PAGE 22



DARCEY WRAP DRESS  
401500261 / PAGE 32



DOMINIQUE DRESS  
401500269 / PAGE 32



RAVEN DRESS  
401500274 / PAGE 32



FITZGERALD DRESS  
401500272 / PAGE 33



PALMER DRESS  
401500270 / PAGE 33



AMELIA DRESS  
401500271 / PAGE 33



NORWOOD DRESS  
401500273 / PAGE 33



ROSA DRESS  
401500258 / PAGE 34



KINZIE DRESS  
401500267 / PAGE 34

### SKIRTS- 4115



OLLIE PLAID SKIRT  
411500066 / PAGE 22



GATECRASHER SKIRT  
411500063 / PAGE 32

### WOVENS - 2812



BENICE SHIRT  
281200096 / PAGE 23



CAFFE BLOUSE  
281200098 / PAGE 32



FITZGERALD SHIRT  
281200099 / PAGE 33



ST. CLAIRE SHIRT  
281200097 / PAGE 34

### KNITS - 2310



COLE TOP  
231030075 / PAGE 23



KINZIE TOP  
231030077 / PAGE 34



PALMER TOP  
231030078 / PAGE 34



CORBETT TOP  
231030074 / PAGE 36

### LAYERING - 2311



LYNX BRALETTE  
231170027 / PAGE 20



HYDRA TUBE TOP  
231140001 / PAGE 35



HYDRA TOP  
231120030 / PAGE 35

## CAD ROUND-UP

### OVERALLS & ROMPERS - 2420 / 2721



CASBAH OVERALL  
242020045 / PAGE 18



AVA JUMPSUIT  
242060011 / PAGE 19



OLLIE PLAID OVERALL  
242020040 / PAGE 24



CORBETT ROMPER  
242060007 / PAGE 35



CORBETT JUMPSUIT  
242060010 / PAGE 36

### PANTS - 2420



RUBY PANT  
242000065 / PAGE 16



CERISE TRACK PANT  
242000064 / PAGE 19



CASHED OUT PANT  
242030021 / PAGE 19



LACKEY PANT  
242020044 / PAGE 24



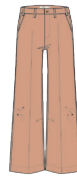
CASBAH PANT  
242020046 / PAGE 24



VULTURE PANT  
242000062 / PAGE 24



CHARLIE PLAID PANT  
242000061 / PAGE 24



GATECRASHER PANT  
242020043 / PAGE 34



SILVERLAKE PANT  
242000063 / PAGE 35



CORBETT PANT  
242050008 / PAGE 36

### DENIM - 2420



VANDAL PANT  
242020047 / PAGE 25



SUNDAYS SLIM JEAN  
242010039 / PAGE 25



SUNDAYS STRAGGLER  
242010038 / PAGE 25



SLASHER SKINNY JEAN  
242010043 / PAGE 25





## ARTIST SERIES

### MARILYN RONDON

Marilyn Rondon also known as Caliente Chica or DJ totally stoked was born in Valencia, Venezuela and immigrated to Miami, Florida with her family at the young age of 5. She attended magnet art schools throughout her early childhood but graduated a year late from Design and Architecture Senior High school. She moved to NYC in '06 after spending a summer living and working as a waitress in Nantucket, MA.

Her art journey continued as a shop assistant at Fun City tattoo and Dare Devil tattoo where she got back to the basics of drawing and watercolor painting. After working in the tattoo scene for several years- she left the shop life to pursue continued education courses at the School of Visual Arts in Manhattan as well as pursue her passion as a DJ.

After years of battling substance abuse and major depression; Marilyn relocated to Miami, FL where she cleaned up and honed in on her talents. She began painting murals for a living and showcased her first conceptual art piece Latina Seeks Thug at the little Haiti country club in Miami in 2014. That same year, she began self-publishing her magazine Dat Ass Zine and curated her third show I've been planning while you're playing at Art Basel. In 2016 Rondon published her first children's book Why does Mommy have tattoos? with lit Riot press.

Marilyn's unique look has landed her major ad campaigns (Reebok, Good American, Discount Universe, Katy Perry INDI, York Athletics MFG). She's been featured in music videos and walked her first fashion show for Gypsy Sport SS17. Marilyn resides in sunny south beach where she practices Kundalini Yoga and continues to expand her artistic vision as well as educate herself and her social media following on mental health, nutrition, holistic living and mindfulness.

@CalienteChica

# ARTIST SERIES: MARILYN RONDON

## ANGELS

266851369

SHIPPED BY COLOR	XS:	S:	M:	L:	XL:
------------------	-----	----	----	----	-----

WHITE



CORAL

## LIPS

266851370

SHIPPED BY COLOR	XS:	S:	M:	L:	XL:
------------------	-----	----	----	----	-----

WHITE



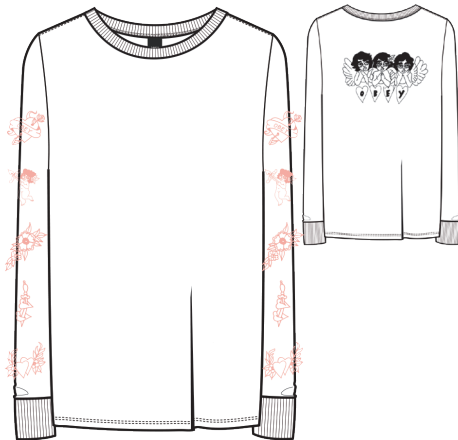
GOLD

## ANGELS

265831369

SHIPPED BY COLOR	XXS:	XS:	S:	M:	L:	XL:
------------------	------	-----	----	----	----	-----

GOLD



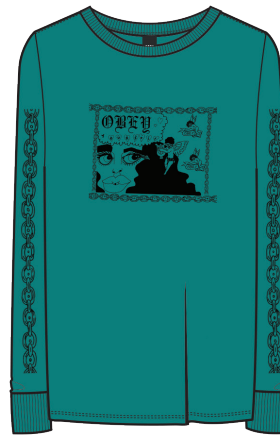
WHITE

## OBED YOURSELF

265831371

SHIPPED BY COLOR	XXS:	XS:	S:	M:	L:	XL:
------------------	------	-----	----	----	----	-----

WHITE



TEAL

## CUSTOM BOX TEES

Premium weight, 18's jersey tee comes in a relaxed boyfriend fit. This is the perfect tomboy tee for girls with an edge. Features a custom dye and wash treatment for rich colors and a premium hand feel

Content: 100% Cotton

Made in USA





## CUSTOM BOX TEES

### NOVEL OBEY 2

266851274

SHIPPED BY COLOR	XS:	S:	M:	L:	XL:
------------------	-----	----	----	----	-----

CREME



OFF BLACK



DEEP RED



DIJON

### OBEY INTERNATIONAL 2

266851372

SHIPPED BY COLOR	XS:	S:	M:	L:	XL:
------------------	-----	----	----	----	-----

OFF BLACK



DIJON



WHITE



DEEP RED

### KISS OF OBEY

266851382

SHIPPED BY COLOR	XS:	S:	M:	L:	XL:
------------------	-----	----	----	----	-----

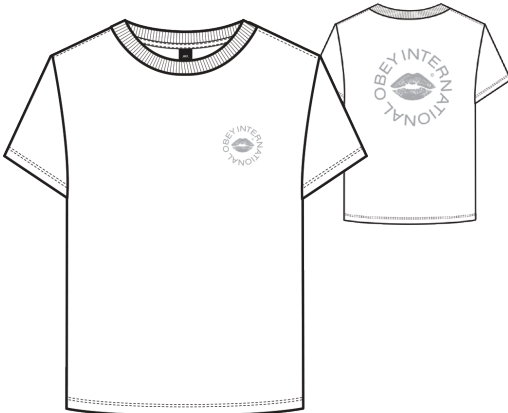
DEEP PURPLE



CORAL



OFF BLACK



WHITE

\* metallic ink

### OBEY PHILOSOPHY

266851374

SHIPPED BY COLOR	XS:	S:	M:	L:	XL:
------------------	-----	----	----	----	-----

OFF BLACK



FOREST PINE



WHITE



CORAL

### AWAKENING

266851375

SHIPPED BY COLOR	XS:	S:	M:	L:	XL:
------------------	-----	----	----	----	-----

CREME



OFF BLACK



FOREST PINE

### ANOTHER NIGHT

266851376

SHIPPED BY COLOR	XS:	S:	M:	L:	XL:
------------------	-----	----	----	----	-----

OFF BLACK



DIJON



CREME

## CUSTOM BOX TEES

### LOVE IS A DISASTER

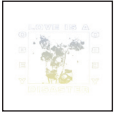
266851377

SHIPPED BY COLOR	XS:	S:	M:	L:	XL:
------------------	-----	----	----	----	-----

OFF BLACK



WHITE



DEEP PURPLE  
\* metallic ink

### BURNING INSIDE

266851391

SHIPPED BY COLOR	XS:	S:	M:	L:	XL:
------------------	-----	----	----	----	-----

WHITE



FOREST PINE



OFF BLACK  
\* metallic ink

### CUSTOM BOX TEE

266850000

SHIPPED BY COLOR	XS:	S:	M:	L:	XL:
------------------	-----	----	----	----	-----

DIJON



DEEP PURPLE



OFF BLACK



DARK RED



CREME



FOREST PINE



WHITE



CORAL





Polaski Beanie  
Sienna Jacket  
Dolores Crew

B E N



## CUSTOM BOX BLEACH TEES

Premium weight, 18s jersey tee comes in a slightly relaxed boyfriend fit. In between our classic tee and oversized box fit tee, this is the perfect tomboy tee for girls with an edge. Features a custom bleach wash in bold colors for those unafraid to stand out in a crowd  
Content: 100% Cotton



### OBEY PHILOSOPHY

266941374

SHIPPED BY COLOR	XS:	S:	M:	L:	XL:
------------------	-----	----	----	----	-----

BLACK BLEACH



ROSE BLEACH

### AWAKENING

266941375

SHIPPED BY COLOR	XS:	S:	M:	L:	XL:
------------------	-----	----	----	----	-----

ROSE BLEACH



BLACK BLEACH



## CUSTOM BOX BLEACH LONG SLEEVE TEES

Premium weight, 18s jersey long sleeve tee cut in a relaxed, slightly oversized fit  
Features a custom bleach wash in bold colors for those unafraid to stand out in a crowd  
Content: 100% Cotton

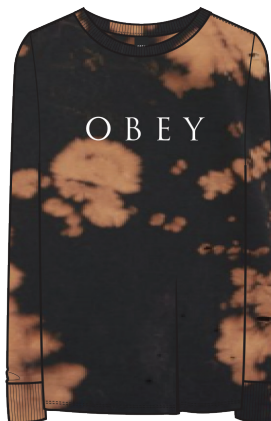


### NOVEL OBEY 2

266931274

SHIPPED BY COLOR	XXS:	XS:	S:	M:	L:	XL:
------------------	------	-----	----	----	----	-----

ROSE BLEACH



BLACK BLEACH

### FLOWER POWER

266931380

SHIPPED BY COLOR	XXS:	XS:	S:	M:	L:	XL:
------------------	------	-----	----	----	----	-----

BLACK BLEACH



ROSE BLEACH

## CUSTOM BOX PIGMENT LONG SLEEVE TEES

Premium weight, 18s jersey long sleeve tee cut in a relaxed, slightly oversized fit. Features a custom pigment dye for a vintage wash look  
Content: 100% Cotton





## CUSTOM BOX PIGMENT LONG SLEEVE TEES

### OBEY INTERNATIONAL 2

266961372

SHIPPED BY COLOR	XXS:	XS:	S:	M:	L:	XL:
------------------	------	-----	----	----	----	-----

DUSTY DARK ROSE



DUSTY FOREST



DUSTY BLACK



DUSTY ORANGE

### ANOTHER NIGHT

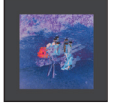
266961376

SHIPPED BY COLOR	XXS:	XS:	S:	M:	L:	XL:
------------------	------	-----	----	----	----	-----

DUSTY EGGPLANT



DUSTY BLACK



DUSTY DARK ROSE

### BARBED

266961384

SHIPPED BY COLOR	XXS:	XS:	S:	M:	L:	XL:
------------------	------	-----	----	----	----	-----

DUSTY BLACK



DUSTY EGGPLANT



DUSTY ORANGE



DUSTY FOREST

### OPEN YOUR MIND

266961388

SHIPPED BY COLOR	XXS:	XS:	S:	M:	L:	XL:
------------------	------	-----	----	----	----	-----

DUSTY DARK ROSE



DUSTY EGGPLANT



DUSTY BLACK

## MOCK NECK CROPPED TEES

Premium weight, 18s jersey cropped tee with mock neck. Hits just below natural waist for a feminine tomboy look

Features a custom dye and wash treatment for rich colors and premium hand feel

Content: 100% Cotton

Made in USA





## MOCK NECK CROPPED TEES

### RUE DE LA RUINE

267010813

SHIPPED BY COLOR	XS:	S:	M:	L:	XL:
------------------	-----	----	----	----	-----

WHITE



LIGHT BROWN



OFF BLACK



BRIGHT ORANGE

### FLOWER POWER

267011380

SHIPPED BY COLOR	XS:	S:	M:	L:	XL:
------------------	-----	----	----	----	-----

BRIGHT ORANGE



WHITE



OFF BLACK



LIGHT BROWN

### OBEY INT. ICON

267011381

SHIPPED BY COLOR	XS:	S:	M:	L:	XL:
------------------	-----	----	----	----	-----

BRIGHT ORANGE



LIGHT BROWN



OFF BLACK



WHITE

### OBEY INTERNATIONAL

267011387

SHIPPED BY COLOR	XS:	S:	M:	L:	XL:
------------------	-----	----	----	----	-----

BRIGHT ORANGE



LIGHT BROWN



WHITE



OFF BLACK

### MOCK NECK CROPPED TEE

267010000

SHIPPED BY COLOR	XS:	S:	M:	L:	XL:
------------------	-----	----	----	----	-----

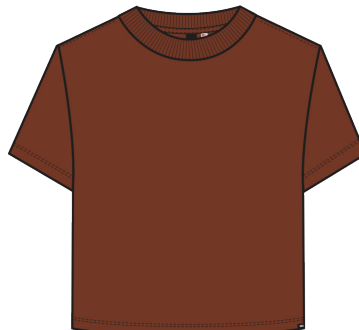
BRIGHT ORANGE



WHITE



OFF BLACK



LIGHT BROWN

## CROPPED LONG SLEEVE TEES

Oversized, boxy fit long sleeve tee with drop shoulder, feminine neckline with binding  
Cut in a premium weight 18s jersey and features a custom dye and wash treatment  
Content: 100% Cotton  
Made in USA





## CROPPED LONG SLEEVE TEES

### NOVEL OBEY 2

267181274

SHIPPED BY COLOR	XS:	S:	M:	L:	XL:
------------------	-----	----	----	----	-----

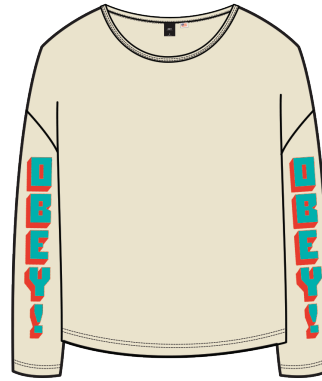
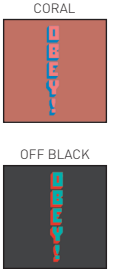


CORAL

### OBEY NEW WORLD 2

267181276

SHIPPED BY COLOR	XS:	S:	M:	L:	XL:
------------------	-----	----	----	----	-----

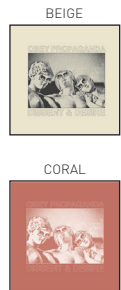


BEIGE

### DESIRE

267181378

SHIPPED BY COLOR	XS:	S:	M:	L:	XL:
------------------	-----	----	----	----	-----



OFF BLACK

### KISS OF OBEY

267181382

SHIPPED BY COLOR	XS:	S:	M:	L:	XL:
------------------	-----	----	----	----	-----

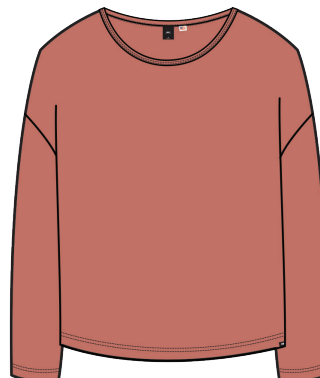
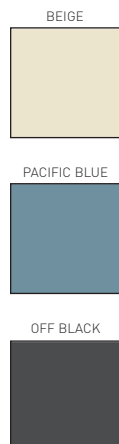


PACIFIC BLUE

### CROPPED LONG SLEEVE TEE

267180000

SHIPPED BY COLOR	XS:	S:	M:	L:	XL:
------------------	-----	----	----	----	-----



CORAL

## BOX PIGMENT CREW FLEECE

Oversized fit, dropped shoulder boxy crew neck fleece with rib cuffs and neck. Features a custom pigment dye for a dusty look  
Content: 80% Cotton/ 20% Polyester





## BOX PIGMENT CREW FLEECE

### OBEY INTERNATIONAL 2

212691372

SHIPPED BY COLOR	XS:	S:	M:	L:	XL:
------------------	-----	----	----	----	-----



DUSTY DARK INDIGO

### AWAKENING

212691375

SHIPPED BY COLOR	XS:	S:	M:	L:	XL:
------------------	-----	----	----	----	-----



DUSTY SAGE

### ANOTHER NIGHT

212691376

SHIPPED BY COLOR	XS:	S:	M:	L:	XL:
------------------	-----	----	----	----	-----

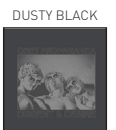


DUSTY COWHIDE

### DESIRE

212691378

SHIPPED BY COLOR	XS:	S:	M:	L:	XL:
------------------	-----	----	----	----	-----

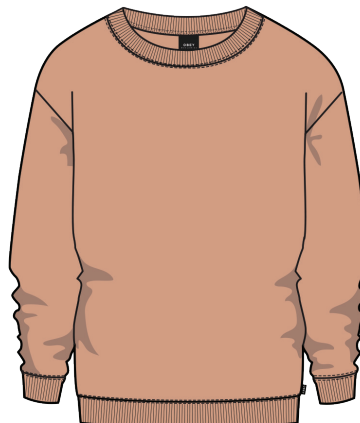
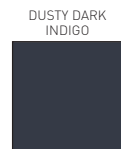


DUSTY CORAL  
\* metallic ink

### BOX PIGMENT CREW

212730000

SHIPPED BY COLOR	XS:	S:	M:	L:	XL:
------------------	-----	----	----	----	-----



DUSTY CORAL

## BOX PIGMENT PULLOVER HOOD FLEECE

Relaxed fit pullover hoodie with pouch pocket and rib trim. Features a custom pigment dye for a dusty look  
Content: 80% Cotton/ 20% Polyester





## BOX PIGMENT PULLOVER HOOD FLEECE

### NOVEL OBEY 2

212651274

SHIPPED BY COLOR	XS:	S:	M:	L:	XL:
------------------	-----	----	----	----	-----

DUSTY SAGE



DUSTY CORAL



DUSTY BLACK



DUSTY COWHIDE

### OBEY PHILOSOPHY

212651374

SHIPPED BY COLOR	XS:	S:	M:	L:	XL:
------------------	-----	----	----	----	-----

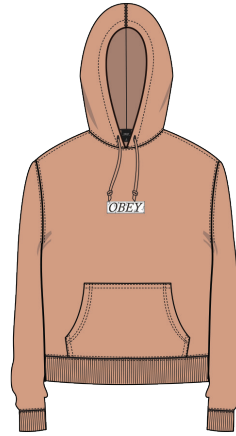
DUSTY COWHIDE



DUSTY SAGE



DUSTY BLACK



DUSTY CORAL

### EXCLAMATION

212651383

SHIPPED BY COLOR	XS:	S:	M:	L:	XL:
------------------	-----	----	----	----	-----

DUSTY SAGE



DUSTY BLACK



DUSTY DARK INDIGO

### OPEN YOUR MIND

212651388

SHIPPED BY COLOR	XS:	S:	M:	L:	XL:
------------------	-----	----	----	----	-----

DUSTY DARK INDIGO



DUSTY BLACK



DUSTY SAGE

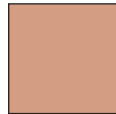


### BOX PIGMENT PULLOVER HOOD

212740000

SHIPPED BY COLOR	XS:	S:	M:	L:	XL:
------------------	-----	----	----	----	-----

DUSTY CORAL



DUSTY BLACK



DUSTY DARK INDIGO



DUSTY SAGE



DUSTY COWHIDE

## BOX MOCK PIGMENT CREW FLEECE

Custom box fit pigment dyed mock neck fleece with set in rib trims and silver zipper. Features a heavyweight fleece fabrication  
Content: 80% Cotton/ 20% Polyester





## BOX MOCK PIGMENT CREW FLEECE

### NOVEL OBEY 2

212771274

SHIPPED BY COLOR	XS:	S:	M:	L:	XL:
------------------	-----	----	----	----	-----



DUSTY SAGE

### OBEY INTERNATIONAL 2

212771372

SHIPPED BY COLOR	XS:	S:	M:	L:	XL:
------------------	-----	----	----	----	-----

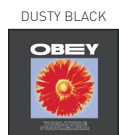


DUSTY DARK INDIGO

### FLOWER POWER

212771380

SHIPPED BY COLOR	XS:	S:	M:	L:	XL:
------------------	-----	----	----	----	-----



DUSTY COWHIDE

### KISS OF OBEY

212771382

SHIPPED BY COLOR	XS:	S:	M:	L:	XL:
------------------	-----	----	----	----	-----

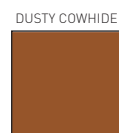
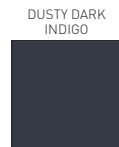
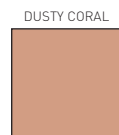


DUSTY CORAL

### BOX MOCK PIGMENT CREW

212770000

SHIPPED BY COLOR	XS:	S:	M:	L:	XL:
------------------	-----	----	----	----	-----



DUSTY SAGE

## CUSTOM PIGMENT SWEATPANTS

Slim fit sweatpant with drawcord at waist, sideseam pockets and elastic at hems. Features a custom pigment dye for a dusty look  
Content: 80% Cotton/ 20% Polyester



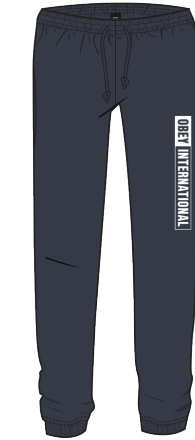
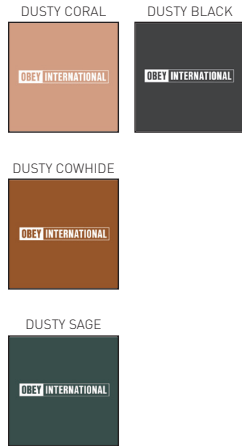


## CUSTOM PIGMENT SWEATPANTS

### OBEY INTERNATIONAL 2

242721372

SHIPPED BY COLOR	XS:	S:	M:	L:	XL:
------------------	-----	----	----	----	-----



DUSTY DARK INDIGO

### NOVEL OBEY 2

242721274

SHIPPED BY COLOR	XS:	S:	M:	L:	XL:
------------------	-----	----	----	----	-----



DUSTY SAGE

### CUSTOM PIGMENT SWEATPANT

242720000

SHIPPED BY COLOR	XS:	S:	M:	L:	XL:
------------------	-----	----	----	----	-----



DUSTY SAGE

## CLASSIC CREW TEES

Relaxed fit, classic crewneck tee in solids. Features a delicate soft wash  
Content: 100% Cotton





CLASSIC CREW TEES

OBEY NEW WORLD265261273

SHIPPED BY COLOR	XS:	S:	M:	L:	XL:
------------------	-----	----	----	----	-----



ORANGE

OBEY ELECTRIC FURY TIGER265261389

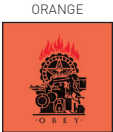
SHIPPED BY COLOR	XS:	S:	M:	L:	XL:
------------------	-----	----	----	----	-----



GRAPE

OBEY PRINTING PRESS STENCIL265261318

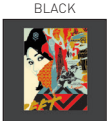
SHIPPED BY COLOR	XS:	S:	M:	L:	XL:
------------------	-----	----	----	----	-----



MALLARD

OBEY DRINK CRUDE OIL265261379

SHIPPED BY COLOR	XS:	S:	M:	L:	XL:
------------------	-----	----	----	----	-----



OPTIC WHITE

## CAMO CREW TEES

Premium weight, 20s jersey, relaxed fit crew neck tee. Features a classic camo all over print and custom wash  
Content: 100% Cotton



### KISS OF OBEY

267081382

SHIPPED BY COLOR	XS:	S:	M:	L:	XL:
------------------	-----	----	----	----	-----



CAMO

### NOVEL OBEY 2

267081274

SHIPPED BY COLOR	XS:	S:	M:	L:	XL:
------------------	-----	----	----	----	-----



CAMO



## CAMO LONG SLEEVE TEES

Premium weight, 20s jersey, relaxed fit long sleeve tee. Features a classic camo all over print and custom wash  
Content: 100% Cotton



### NOVEL OBEY 2 LS

267091274

SHIPPED BY COLOR	XXS:	XS:	S:	M:	L:	XL:
------------------	------	-----	----	----	----	-----



CAMO

### OBEY INTERNATIONAL 2

267091372

SHIPPED BY COLOR	XXS:	XS:	S:	M:	L:	XL:
------------------	------	-----	----	----	----	-----



CAMO

## SALVAGE LONG SLEEVE TEES

Relaxed fit, boyfriend-inspired long sleeved crewneck tee  
Content: 100% Cotton





## SALVAGE LONG SLEEVE TEES

### LOVE IS A DISASTER

265831377

SHIPPED BY COLOR	XXS:	XS:	S:	M:	L:	XL:
------------------	------	-----	----	----	----	-----

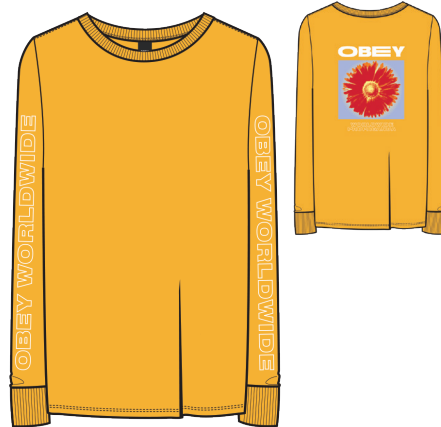


BLACK

### FLOWER POWER

265831380

SHIPPED BY COLOR	XXS:	XS:	S:	M:	L:	XL:
------------------	------	-----	----	----	----	-----

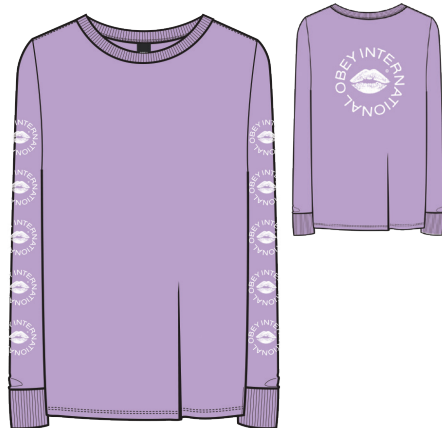


GOLD

### KISS OF OBEY

265831382

SHIPPED BY COLOR	XXS:	XS:	S:	M:	L:	XL:
------------------	------	-----	----	----	----	-----



LAVENDER

### OBEY JUMBLED EYES

265831386

SHIPPED BY COLOR	XXS:	XS:	S:	M:	L:	XL:
------------------	------	-----	----	----	----	-----



ROYAL BLUE

## DELANCEY CREW FLEECE

Boxy crew neck fleece. Features an oversized fit, dropped shoulder with rib cuffs and neckband. Cut in a soft brush back fleece  
Content: 52% Cotton/ 48% Polyester





## DELANCEY CREW FLEECE

### OBHEY INTERNATIONAL CONSPIRACY

212411331

SHIPPED BY COLOR	XS:	S:	M:	L:	XL:
------------------	-----	----	----	----	-----

YELLOW



CHILI PEPPER



BLACK



SAPPHIRE

### OBHEY INTERNATIONAL 2

212411372

SHIPPED BY COLOR	XS:	S:	M:	L:	XL:
------------------	-----	----	----	----	-----

MALLARD



CHILI PEPPER



BLACK



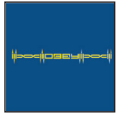
YELLOW

### BARBED

212411384

SHIPPED BY COLOR	XS:	S:	M:	L:	XL:
------------------	-----	----	----	----	-----

SAPPHIRE



YELLOW



BLACK



CHILI PEPPER

### OBHEY INTERNATIONAL

212411387

SHIPPED BY COLOR	XS:	S:	M:	L:	XL:
------------------	-----	----	----	----	-----

SAPPHIRE



CHILI PEPPER



BLACK



MALLARD

### DELANCEY CREW

212410000

SHIPPED BY COLOR	XS:	S:	M:	L:	XL:
------------------	-----	----	----	----	-----

YELLOW



CHILI PEPPER



MALLARD



SAPPHIRE



BLACK

## DELANCEY PULLOVER HOOD FLEECE

Comfy oversized hooded fleece with drop shoulder and rib trim. Cut in a soft brushed back fleece with custom wash treatment  
Content: 52% Cotton/ 48% Polyester





## DELANCEY PULLOVER HOOD FLEECE

### NOVEL OBEY 2

212571274

SHIPPED BY COLOR	XS:	S:	M:	L:	XL:
------------------	-----	----	----	----	-----

YELLOW



SAPPHIRE



BLACK



MALLARD

### OBEY NEW WORLD 2

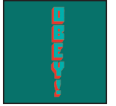
212571276

SHIPPED BY COLOR	XS:	S:	M:	L:	XL:
------------------	-----	----	----	----	-----

YELLOW



MALLARD



BLACK



SAPPHIRE

### KISS OF OBEY

212571382

SHIPPED BY COLOR	XS:	S:	M:	L:	XL:
------------------	-----	----	----	----	-----

MALLARD



SAPPHIRE



BLACK



CHILI PEPPER



### FOREIGN CANDY

212571385

SHIPPED BY COLOR	XS:	S:	M:	L:	XL:
------------------	-----	----	----	----	-----

SAPPHIRE



CHILI PEPPER



BLACK



YELLOW

### DELANCEY PULLOVER HOOD

212570000

SHIPPED BY COLOR	XS:	S:	M:	L:	XL:
------------------	-----	----	----	----	-----

CHILI PEPPER



BLACK



YELLOW



SAPPHIRE



MALLARD

## DELANCEY SWEATPANTS

Slim fit sweatpant with drawcord at waist, sideseam pockets, and elastic at hems. Cut in a soft brush back fleece fabrication  
Content: 52% Cotton/ 48% Polyester





## DELANCEY SWEATPANTS

### NOVEL OBEY 2

242711274

SHIPPED BY COLOR	XS:	S:	M:	L:	XL:
------------------	-----	----	----	----	-----

YELLOW



SAPPHIRE



BLACK



MALLARD

### KISS OF OBEY

242711382

SHIPPED BY COLOR	XS:	S:	M:	L:	XL:
------------------	-----	----	----	----	-----

MALLARD



SAPPHIRE



BLACK



CHILI PEPPER

### DELANCEY SWEATPANT

242710000

SHIPPED BY COLOR	XS:	S:	M:	L:	XL:
------------------	-----	----	----	----	-----

YELLOW



BLACK



SAPPHIRE



CHILI PEPPER



MALLARD

## BASIC ZIP HOOD FLEECE

Regular fit zip hood fleece with pouch pocket, set in sleeves and rib trim  
Content: 80% Cotton/ 20% Polyester

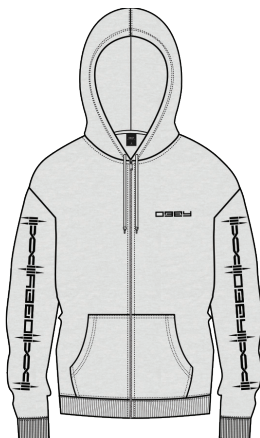


### BARBED

211841384

SHIPPED BY COLOR	XS:	S:	M:	L:	XL:
------------------	-----	----	----	----	-----

BLACK



GREY HEATHER

### BURNING INSIDE

211841391

SHIPPED BY COLOR	XS:	S:	M:	L:	XL:
------------------	-----	----	----	----	-----

GREY HEATHER



BLACK  
\* metallic ink





Savage City Moto  
Dominique Dress





## SHRUNKEN TEES

Inspired by a '90s babydoll tee, the shrunk tee is fitted through the body. The hem hits just at the hip and has a fitted sleeve for a perfectly cute tomboy look.

A great tee to wear under dresses, overalls or on its own. Features a medium weight cotton fabrication with a dry hand

Content: 100% Cotton ; HEATHER GREY: 90% Cotton/ 10% Polyester



## SHRUNKEN TEES

### OBEY INT. ICON

266801381

SHIPPED BY COLOR	XS:	S:	M:	L:	XL:
------------------	-----	----	----	----	-----

LIGHT PINK



WHITE



BLACK



JADE

### EXCLAMATION

266801383

SHIPPED BY COLOR	XS:	S:	M:	L:	XL:
------------------	-----	----	----	----	-----

CAROLINA BLUE



BLACK



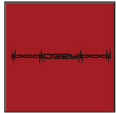
RED

### BARBED

266801384

SHIPPED BY COLOR	XS:	S:	M:	L:	XL:
------------------	-----	----	----	----	-----

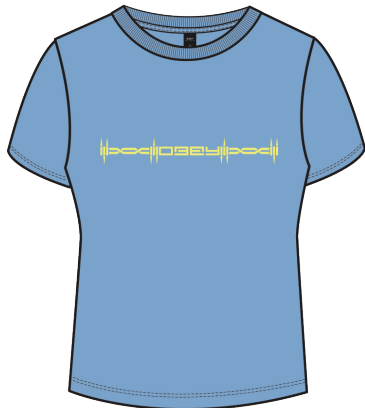
RED



BLACK



GOLD



CAROLINA BLUE

### FOREIGN CANDY

266801385

SHIPPED BY COLOR	XS:	S:	M:	L:	XL:
------------------	-----	----	----	----	-----

JADE



HEATHER GREY



BLACK



GOLD



## DRIFTER CLASSIC TEES

Relaxed fit classic crewneck tee. A vintage version of our "Classic" tee, this style is cut in a lightweight jersey and features a specialty wash for a faded look  
Content: 100% Cotton



## DRIFTER CLASSIC TEES

### NOVEL OBEY

264711163

SHIPPED BY COLOR	XS:	S:	M:	L:	XL:
------------------	-----	----	----	----	-----

RUST



MINK



BLACK



TAN

### ANOTHER NIGHT

264711376

SHIPPED BY COLOR	XS:	S:	M:	L:	XL:
------------------	-----	----	----	----	-----

CLOUD WHITE



TAN



BLACK

### LOVE IS A DISASTER

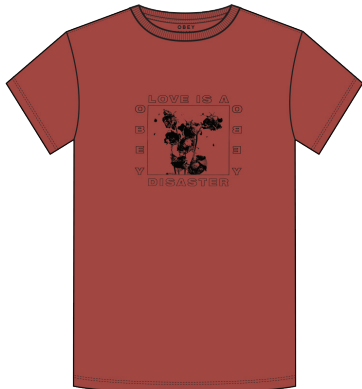
264711377

SHIPPED BY COLOR	XS:	S:	M:	L:	XL:
------------------	-----	----	----	----	-----

CLOUD WHITE



BLACK



RUST

### KISS OF OBEY

264711382

SHIPPED BY COLOR	XS:	S:	M:	L:	XL:
------------------	-----	----	----	----	-----

CLOUD WHITE



BLACK



MINK

### DRIFTER CLASSIC TEE

264710000

SHIPPED BY COLOR	XS:	S:	M:	L:	XL:
------------------	-----	----	----	----	-----

MINK



BLACK



TAN



CLOUD WHITE



RUST



## CLASSIC COACHES JACKETS

Feminine fit coaches jacket with raglan sleeves and welt pockets. Features custom OBEY printed front and back graphic hits. Fully lined with fuzzy tricot  
Content: SHELL: 100% Nylon; LINING: 100% Polyester



### KISS OF OBEY

225001382

SHIPPED BY COLOR	XS:	S:	M:	L:	XL:
------------------	-----	----	----	----	-----

MAROON



BLACK



ROYAL BLUE

## ANORAKS

Regular fit women's anorak jacket with zip hood, set in sleeves and elasticized sleeve cuffs  
Features a hidden zip pocket just below chest, tricot lining and adjustable drawcord at hem  
Content: SHELL: 100% Nylon; LINING: 100% Polyester



**OBEY INTERNATIONAL 2** **221800267**

SHIPPED BY COLOR	XS:	S:	M:	L:	XL:
------------------	-----	----	----	----	-----

MAROON



ROYAL BLUE



BLACK



SYCAMORE GREEN



## HOODED TRENCH JACKETS

Feminine fit coaches jacket with a snap front closure and three piece hood. Features custom OBEY printed front and back graphic hits.

Fully lined with fuzzy tricot.

Content: SHELL: 100% Nylon; LINING: 100% Polyester



### FLOWER POWER

221361380

SHIPPED BY COLOR	XS:	S:	M:	L:	XL:
------------------	-----	----	----	----	-----

BLACK



CAMO

## PRINTABLES CAD ROUND-UP

### T-SHIRTS



CUSTOM BOX TEE  
266850000 / PAGE 56



MOCK NECK CROPPED TEE  
267010000 / PAGE 63



CROPPED LONG SLEEVE POCKET TEE  
267130000 / PAGE 65



DRIFTER CLASSIC TEE  
264710000 / PAGE 91

### FLEECE



SOLD OUT FOOTBALL JERSEY  
266860000 / PAGE 89



BOX PIGMENT CREW  
212730000 / PAGE 67



BOX PIGMENT PULLOVER HOOD  
212740000 / PAGE 69



BOX PIGMENT MOCK CREW  
212770000 / PAGE 71



CUSTOM PIGMENT SWEATPANT  
242720000 / PAGE 73



DELANCEY CREW  
212410000 / PAGE 81



DELANCEY PULLOVER HOOD  
212570000 / PAGE 83



DELANCEY SWEATPANT  
242710000 / PAGE 85







**OBEY**

[WWW.OBEYCLOTHING.COM](http://WWW.OBEYCLOTHING.COM)  
[WWW.OBEYGIANT.COM](http://WWW.OBEYGIANT.COM)