



OBEY



WORLDWIDE PROPAGANDA
THE MEDIUM IS THE MESSAGE

THE OBEY CAMPAIGN CAN BE EXPLAINED AS AN EXPERIMENT IN PHENOMENOLOGY. THE FIRST AIM OF PHENOMENOLOGY IS TO REAWAKEN A SENSE OF WONDER ABOUT ONE'S ENVIRONMENT. THE OBEY CAMPAIGN ATTEMPTS TO STIMULATE CURIOSITY AND BRING PEOPLE TO QUESTION BOTH THE CAMPAIGN AND THEIR RELATIONSHIP WITH THEIR SURROUNDINGS. BECAUSE PEOPLE ARE NOT USED TO SEEING ADVERTISEMENTS OR PROPAGANDA FOR WHICH THE MOTIVE IS NOT OBVIOUS, FREQUENT AND NOVEL ENCOUNTERS WITH OBEY PROPAGANDA PROVOKE THOUGHT AND POSSIBLE FRUSTRATION, NEVERTHELESS REVITALIZING THE VIEWER'S PERCEPTION AND ATTENTION TO DETAIL. TO CATALYZE A THOUGHTFUL DIALOGUE DECONSTRUCTING THE PROCESS OF IMAGE ABSORPTION IS THE ULTIMATE GOAL. ALL IN THE NAME OF FUN AND OBSERVATION.

THE MEDIUM IS THE MESSAGE.



17462 VON KARMAN AVE.
IRVINE, CA 92614
U.S.A.
PHONE 949.596.8400 / FAX 949.596.8437
WWW.OBEYCLOTHING.COM
WWW.OBEYGIANT.COM

SALES REPRESENTATIVES

PACIFIC NORTHWEST

BURL DARDEN
64171 TUMALO RIM DRIVE
BEND, OR 97701
P: 541.385.3302 / F: 541.385.3302
E: BURL@OBEYCLOTHING.COM

LEVI CAMPBELL
2039 SE 29TH AVE.
PORTLAND, OR 97214
P: 360.510.6811
E: LEVI@OBEYCLOTHING.COM

LOS ANGELES

CHRIS SUGINO
18595 SANTA RAMONA ST.
FOUNTAIN VALLEY, CA 92708
C: 702.326.3483
E: CHRIS.SUGINO@OBEYCLOTHING.COM

ORANGE COUNTY / SAN DIEGO

MARK MAZZA
20091 SHOREWOOD CIRCLE
HUNTINGTON BEACH, CA 92649
C: 714.614.7901 / F: 714.964.3676
E: MDMSALES@ME.COM

HAWAII / GUAM

NOEL MARCHAN
95-1038 AINAMAKUA DR. #H
MILILANI, HI 96789
P: 808.676.5290
E: NMARCHAN@AOL.COM

NOR CAL / NEVADA / ARIZONA / NEW MEXICO

JENNIFER L. ZWEIG
8161 SKYLINE BLVD.
OAKLAND, CA 94611
C: 510.388.4418
E: JLZ@OBEYCLOTHING.COM

MIDWEST

LAURA KARELS
13816 SHIRLEY DR.
BURNSVILLE, MN 55337
P: 952.461.4218 / F: 952.461.4219
E: LAURA_KARELS@YAHOO.COM

NORTHEAST

JOE COMBA
26 AVON RD.
NEW ROCHELLE, NY 10804
C: 914.393.9897
E: JOE@OBEYCLOTHING.COM

MID ATLANTIC / SOUTHEAST

ANDREW MERCIER
10777 BISHOPVILLE RD.
BISHOPVILLE, MD 21813
C: 443.614.4422
E: MERCIER@OBEYCLOTHING.COM

INTERNATIONAL

NICK LHOTSKY
17462 VON KARMAN AVE.
IRVINE, CA 92614 U.S.A.
P: 949.596.8400 X263 / C: 443.373.3283
F: 949.596.8437
E: NICK@OBEYCLOTHING.COM

TABLE OF CONTENTS

CUT & SEW

| | | | |
|------------------------------------------------|------------------------------------|------------------------------|-----------------------------------------------|
| 4 FEATURES: WHAT'S BEEN HAPPENING | 21 "EYES" GROUP | 40 SWEATERS | 72 LEATHER ACCESSORIES |
| 8 89 GROUP | 23 "BORSTAL" GROUP | 42 WOVENS | 76 BAGS & ACCESSORIES |
| 12 BIG BOY GROUP | 23 "SAUCER" VELOUR GROUP | 46 CUSTOM FLEECE | 78 BELTS |
| 16 HARD WORK GROUP | 24 DENIM | 50 KNITS | 79 TOTES & SOCKS |
| 19 "EYES" DENIM GROUP | 30 DENIM FIT GUIDE | 56 PANTS | 82 ESSENTIALS |
| 19 "EYES" GROUP | 32 LEATHERS | 62 PANTS FIT GUIDE | 83 P.O.P. |
| 21 "LENSE" GROUP | 34 JACKETS | 64 HEADWEAR | 84 CUT & SEW CATAGORIES ROUND UP |

PRINTABLES

| | | |
|-----------------------------------------------|-------------------------------------------------------------|-------------------------------------------------|
| 90 ARTIST SERIES: MARILYN RONDON | 111 BASIC BOX CREW NECK FLEECE | 121 BLEACH TIE DYE TEE |
| 92 HEAVYWEIGHT CLASSIC BOX TEE | 112 BASIC ZIP HOOD FLEECE | 122 BLEACH TIE DYE LONG SLEEVE TEE |
| 96 PREMIUM / BASIC TEES | 115 CUSTOM HEAVYWEIGHT PIGMENT TEE | 125 SUPERIOR TEE |
| 108 BASIC POCKET TEES | 116 CUSTOM HEAVYWEIGHT PIGMENT LONG SLEEVE TEE | 126 PREMIUM CONTRAST TEE |
| 109 BASIC LONG SLEEVE TEES | 117 CUSTOM PIGMENT HOOD FLEECE | 129 ANORAK PULLOVER HOOD |
| 110 BASIC PULLOVER HOOD FLEECE | 119 CUSTOM PIGMENT MOCK NECK FLEECE | 131 PRINTABLE FIT GUIDE |

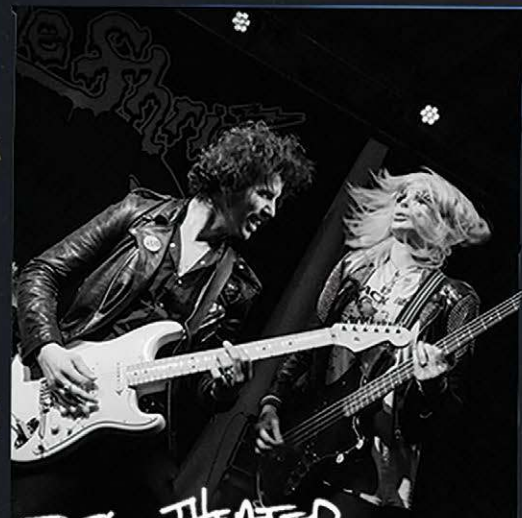
whats been happening at Obey...



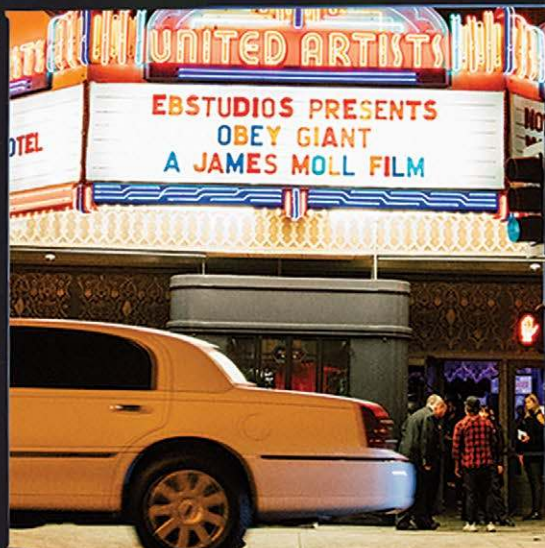
THE SHRINE 7" VINYL



BOOTLEG THEATER



HUU
DOCUMENTARY PREMIERE



ACE HOTEL



SHEPARD FAIREY

THE DIRTY FENCES LIVE

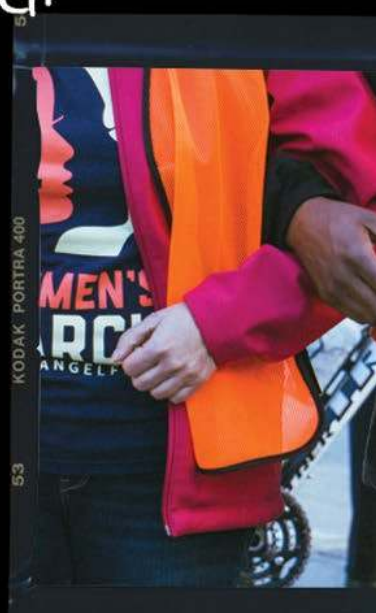




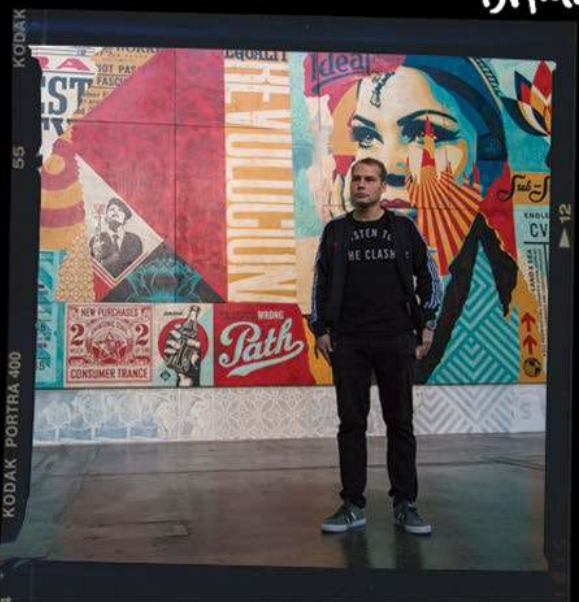
MISFITS POP-UP



WOMEN'S MARCH



DAMAGED SHOW OBEY GIANT




BUY FAIR



BE FAIR

FAIR TRADE





FAIR TRADE IS A MARKET-BASED APPROACH THAT EMPOWERS FACTORY WORKERS AND FARMERS TO FIGHT POVERTY, PRODUCE QUALITY PRODUCTS, PROTECT THE ENVIRONMENT, AND BUILD STRONG THRIVING COMMUNITIES FOR GENERATIONS TO COME. AT THE SAME TIME, FAIR TRADE USA'S FAIR TRADE CERTIFIED™ LABEL EMPOWERS YOU, THE CONSUMER, WITH THE KNOWLEDGE THAT YOUR PURCHASE HAS A POSITIVE IMPACT ON THE PEOPLE WHO SEW AND GROW THE PRODUCTS YOU LOVE. FOR EVERY OBEY FAIR TRADE CERTIFIED™ PRODUCT SOLD, A PERCENTAGE IS PAID DIRECTLY TO A SPECIAL FUND FOR THE WORKERS THAT CREATE OUR GOODS. THEY DECIDE COLLECTIVELY HOW TO SPEND THESE FUNDS BASED ON THE COMMUNITY'S GREATEST NEEDS: FROM SCHOLARSHIPS AND SCHOOL BUSES, TO MEDICAL CARE AND DISASTER RELIEF SERVICES.

"SOCIAL RESPONSIBILITY AND JUSTICE HAVE ALWAYS BEEN VERY IMPORTANT TO OBEY IN BOTH MESSAGE AND PRACTICE. WE WORK WITH MANUFACTURERS THAT PROVIDE A FAIR WAGE AND ETHICAL WORKING CONDITIONS, AND HAVE NOW MADE THE FURTHER STEP TO BECOME AN OFFICIAL FAIR TRADE USA PARTNER (WWW.FAIRTRADEUSA.ORG). OUR FAIR TRADE CERTIFIED™ GARMENTS ARE PRODUCED IN FACTORIES THAT OPERATE AGAINST RIGOROUS SOCIAL, ENVIRONMENTAL AND ECONOMIC STANDARDS, WHERE WORKERS CAN DO THEIR JOBS WITH PRIDE AND DIGNITY. FOR EVERY FAIR TRADE CERTIFIED PRODUCT SOLD, WORKERS EARN MORE MONEY TO FIGHT POVERTY AND FUND COMMUNITY DEVELOPMENT. OUR HOPE IS NOT ONLY TO BENEFIT THE WORKERS OF THE FAIR TRADE FACTORIES, BUT TO LEAD BY EXAMPLE AND PROMOTE THE EXPANSION OF THE FAIR TRADE APPAREL PROGRAM."

- SHEPARD FAIREY

89 GROUP



181200193 EIGHTY NINE STRIPES LS

89 GROUP

EIGHTY NINE WOVEN LS

181200192

- Slim fit long sleeve button up shirt
- A proper button down collar shirt in oxford with thin contrast piping at underside of collarstand. Half Face patch at front chest and flag label at side seam. White pearlized buttons for closures
- 100% Cotton



A.

| | COLOR | S | M | L | XL | XXL |
|----|-------|---|---|---|----|-----|
| A. | WHITE | | | | | |

EIGHTY NINE STRIPES LS

181200193

- Slim fit long sleeve button up shirt
- A proper button down collar shirt in stripe oxford with a thin contrast piping at underside of collarstand. Half Face patch at front chest and flag label at side seam. White pearlized buttons for closures
- 100% Cotton



A.

B.



| | COLOR | S | M | L | XL | XXL |
|----|-------------|---|---|---|----|-----|
| A. | PINE MULTI | | | | | |
| B. | BLACK MULTI | | | | | |

EIGHTY NINE SOLID BOX TEE SS

131080226

- Custom box fit
- Short sleeve crew neck tee with solid rib trims. Features a heavyweight carded jersey fabrication and half face patch at chest
- Fair trade factory certified
- 100% Cotton



A.

B.



C.

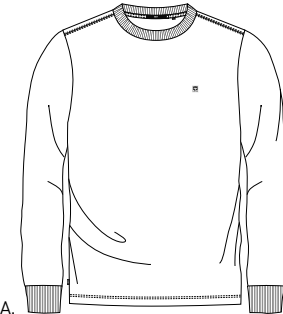


| | COLOR | S | M | L | XL | XXL |
|----|-------|---|---|---|----|-----|
| A. | PINE | | | | | |
| B. | WHITE | | | | | |
| C. | BLACK | | | | | |

EIGHTY NINE SOLID BOX TEE LS

131030078

- Custom box fit
- Long sleeve crew neck tee with solid rib trims. Features a heavyweight carded jersey fabrication and half face patch at chest
- Fair trade factory certified
- 100% Cotton



A.

B.



C.



| | COLOR | S | M | L | XL | XXL |
|----|-------|---|---|---|----|-----|
| A. | WHITE | | | | | |
| B. | BLACK | | | | | |
| C. | PINE | | | | | |

EIGHTY NINE ICON BOX TEE SS

131080227

- Custom box fit
- Short sleeve crew neck tee with solid rib trims. Features a heavyweight carded stripe jersey fabrication and half face patch at chest
- Fair trade factory certified
- 100% Cotton



A.

B.



| | COLOR | S | M | L | XL | XXL |
|----|-------------|---|---|---|----|-----|
| A. | PINE MULTI | | | | | |
| B. | BLACK MULTI | | | | | |

EIGHTY NINE ICON BOX TEE LS

131030079

- Custom box fit
- Long sleeve crew neck tee with solid rib trims. Features a heavyweight carded stripe jersey fabrication and half face patch at chest
- Fair trade factory certified
- 100% Cotton



A.

B.



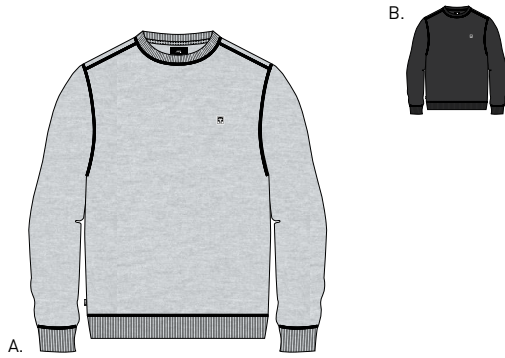
| | COLOR | S | M | L | XL | XXL |
|----|-------------|---|---|---|----|-----|
| A. | BLACK MULTI | | | | | |
| B. | PINE MULTI | | | | | |

89 GROUP

EIGHTY NINE ICON CREW

111600069

- Slim fit
- Fleece crew neck with solid rib trims. Features a half face patch at chest, french terry fabrication and novelty stitching along seams
- Solid : 80% Cotton / 20% Polyester; Heather Grey: 55% Cotton / 45% Polyester

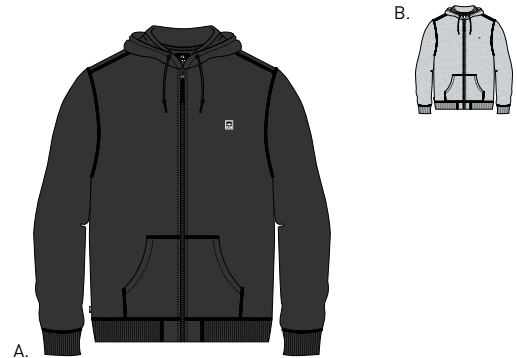


| | COLOR | S | M | L | XL | XXL |
|----|--------------|---|---|---|----|-----|
| A. | HEATHER GREY | | | | | |
| B. | BLACK | | | | | |

EIGHTY NINE ICON ZIP HOOD

111620024

- Slim fit
- Hooded fleece pullover with solid rib trims. Features a half face patch at chest, French terry fabrication and novelty stitching along seams
- Solid : 80% Cotton / 20% Polyester; Heather Grey : 55% Cotton / 45% Polyester



| | COLOR | S | M | L | XL | XXL |
|----|--------------|---|---|---|----|-----|
| A. | BLACK | | | | | |
| B. | HEATHER GREY | | | | | |

EIGHTY NINE 6 PANEL HAT III

100580162

- Unstructured 6 panel strapback hat
- Low profile crown height with curved visor, half face patch and self fabric strap closure
- 100% Cotton



| | COLOR | O/S |
|----|-------|-----|
| A. | PINE | |
| B. | BLACK | |

EIGHTY NINE BEANIE

100030072

- Medium height cuffed beanie
- Features jersey knit construction and half face patch
- 100% Acrylic



| | COLOR | O/S |
|----|-------|-----|
| A. | BLACK | |
| B. | PINE | |



BIG BOY GROUP



LOITER BIG FIT PANT
 LOOSE FIT



- LOITER BIG FIT PANT
 142020099
- Loose straight fit
 - Timeless work pant with flooded inseam length. Features zipper fly closure, slash front pockets, single welt back pockets and woven label at back right pocket.
 - 100% Cotton



| | COLOR | 28 | 30 | 31 | 32 | 33 | 34 | 36 | 38 |
|----|-------|----|----|----|----|----|----|----|----|
| A. | BLACK | | | | | | | | |
| B. | KHAKI | | | | | | | | |

FUBAR BIG FIT PANT
LOOSE FIT



FUBAR PLEATED PANT

142020106

- Loose straight fit
- Timeless pleated work pant with flooded inseam length. Features zipper fly closure, slash front pockets, single welt back pockets and woven label at back right pocket
- SOLID: 100% Cotton HEATHER CHARCOAL: 60% Cotton / 40% Polyester

A.

COLOR

26 28 30 31 32 33 34 36 38

B.

C.

D.

| | | | | | | | | | | |
|----|------------------|--|--|--|--|--|--|--|--|--|
| A. | PINE GREEN | | | | | | | | | |
| B. | BLACK | | | | | | | | | |
| C. | BURNT OLIVE | | | | | | | | | |
| D. | HEATHER CHARCOAL | | | | | | | | | |

FUBAR CARGO PANT

142020103

- Loose straight fi
- Military-inspired, oversized and pleated cargo pant with flooded inseam length. Features, zipper fly closure, slash front pockets, cargo pockets, and eyes logo label at back pocket
- 100% Cotton

A.

COLOR

28 30 31 32 33 34 36 38

B.

| | | | | | | | | | | |
|----|---------------|--|--|--|--|--|--|--|--|--|
| A. | OVERSIZE CAMO | | | | | | | | | |
| B. | DRIP CAMO | | | | | | | | | |

BIG BOY GROUP

BIG BOY PANTS BASIC TEE

- Regular fit crew neck tee with rib neck trim
- Made with heavyweight cotton
- Solid: 100% Cotton; Heather Grey: 90% Cotton / 10% Polyester

163081595



| | COLOR | S | M | L | XL | XXL |
|----|--------------|---|---|---|----|-----|
| A. | BLACK | | | | | |
| B. | HEATHER GREY | | | | | |
| C. | WHITE | | | | | |

BIG BOY PANTS BASIC LONG SLEEVE TEE

- Regular fit crew neck long sleeve tee with rib neck trim
- Made with heavyweight cotton
- Solid: 100% Cotton; Heather Grey: 90% Cotton / 10% Polyester

164901595



| | COLOR | S | M | L | XL | XXL |
|----|--------------|---|---|---|----|-----|
| A. | HEATHER GREY | | | | | |
| B. | WHITE | | | | | |
| C. | BLACK | | | | | |

BIG BOY PANTS BASIC CREW NECK

- Regular fit crew neck fleece with rib trims and set in sleeves
- 50% Cotton / 50% Polyester

111741595



| | COLOR | S | M | L | XL | XXL |
|----|-------|---|---|---|----|-----|
| A. | WHITE | | | | | |
| B. | ASH | | | | | |
| C. | BLACK | | | | | |

BIG BOY 6 PANEL HAT

- Cotton twill low profile 6 panel hat with direct embroidery and self fabric closure
- 100% Cotton

100580100

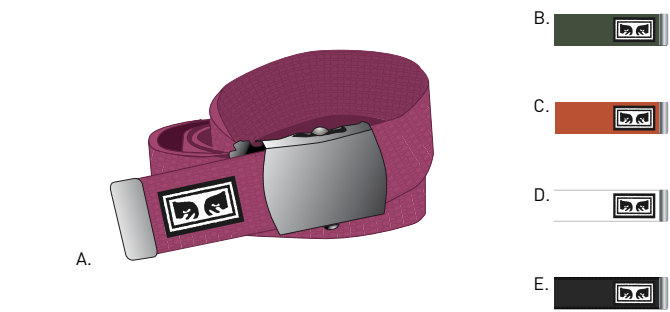


| | COLOR | O/S | | COLOR | O/S |
|----|-------|-----|----|-------|-----|
| A. | KHAKI | | B. | BLACK | |

BIG BOY BELT

- Adjustable webbing belt with antique silver hardware and a OBEY original label
- 60% Cotton / 40% Polyester

100050026



| | COLOR | O/S | | COLOR | O/S |
|----|--------------|-----|----|-------|-----|
| A. | RASPBERRY | | D. | WHITE | |
| B. | PINE | | E. | BLACK | |
| C. | DUSTY ORANGE | | | | |

HARD WORK GROUP



HARD WORK GROUP

LOVELY TRUCKER

121800347

- Regular fit
- A denim-inspired cotton twill jacket with antique silver hardware. This style offered in unique prints. Logo strip label at chest pocket flap
- 100% Cotton



| | COLOR | S | M | L | XL | XXL |
|----|---------------|---|---|---|----|-----|
| A. | KHAKI LEOPARD | | | | | |
| B. | CHECKER | | | | | |
| C. | BLACK MULTI | | | | | |

HARD WORK LABOR JACKET

121800351

- Regular fit
- A workwear style jacket with four patch pockets at front and logo shank buttons at center front. This style is offered in unique prints. Eyes woven label at front chest pocket
- 100% Cotton

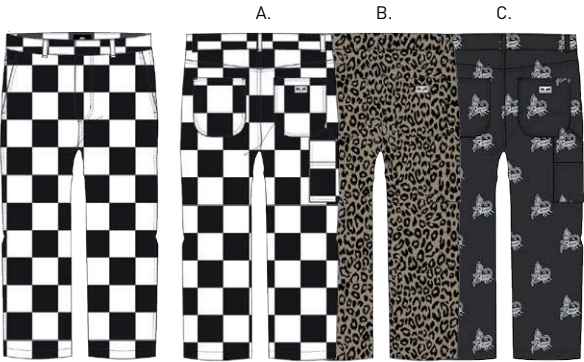


| | COLOR | S | M | L | XL | XXL |
|----|---------------|---|---|---|----|-----|
| A. | CHECKER | | | | | |
| B. | KHAKI LEOPARD | | | | | |
| C. | BLACK MULTI | | | | | |

HARDWORK LABOR PANT

142020121

- Loose straight fit
- Timeless carpenter pant. Features zipper fly closure, slash front pockets, patch back pockets, carpenter pocket details and woven label at back right pocket
- 100% Cotton



| | COLOR | 26 | 28 | 30 | 31 | 32 | 33 | 34 | 36 | 38 |
|----|---------------|----|----|----|----|----|----|----|----|----|
| A. | CHECKER | | | | | | | | | |
| B. | KHAKI LEOPARD | | | | | | | | | |
| C. | BLACK MULTI | | | | | | | | | |

EYES GROUP



“EYES” DENIM GROUP

BENDER EYES JACKET

121800354

- Slim fit
- A classic denim jacket style with pocket flaps and bottom welt pockets. Adjustable tabs at back bottom waist with all closures in logo button shanks. All over Eyes print at body and sleeve
- 100% Cotton



| | COLOR | S | M | L | XL | XXL |
|----|-------------------------|---|---|---|----|-----|
| A. | EYES LIGHT INDIGO MULTI | | | | | |
| B. | EYES BLACK MULTI | | | | | |

BENDER EYES DENIM

142010064

- Standard fit
- Classic five pocket denim with flooded inseam length. Features Eyes all over print, zipper fly, logo shank button closure, coin pocket, and logo label at back pocket.
- 100% Cotton



| | COLOR | 28 | 30 | 31 | 32 | 33 | 34 | 36 | 38 |
|----|-------------------------|----|----|----|----|----|----|----|----|
| A. | EYES LIGHT INDIGO MULTI | | | | | | | | |
| B. | EYES BLACK MULTI | | | | | | | | |

“EYES” GROUP

RISE UP BDU JACKET

121800341

- Regular fit
- A military cotton ripstop, BDU style jacket with hidden snap and zipper closure at center front. Four patch pockets at front with hidden button closure and Eyes woven label at chest pocket flap
- 100% Cotton



| | COLOR | S | M | L | XL | XXL |
|----|------------------|---|---|---|----|-----|
| A. | EYES FIELD CAMO | | | | | |
| B. | EYES BLACK MULTI | | | | | |

FUBAR CARGO PANT

142020103

- Loose straight fit
- Military-inspired, oversized and pleated cargo pant with flooded inseam length. Features, zipper fly closure, slash front pockets, cargo pockets, and eyes logo label at cargo pocket
- 100% Cotton



| | COLOR | 28 | 30 | 31 | 32 | 33 | 34 | 36 | 38 |
|----|------------------|----|----|----|----|----|----|----|----|
| A. | EYES FIELD CAMO | | | | | | | | |
| B. | EYES BLACK MULTI | | | | | | | | |

NYLON GROUP



“LENSE” GROUP

LENSE JACKET

121800334

- Regular fit
- Tall mock neck, soft shell, raglan sleeve jacket with interior body lined with polar fleece.
- Elastic at cuffs and bottom waistband. Eyes label at front chest
- 100% Polyester

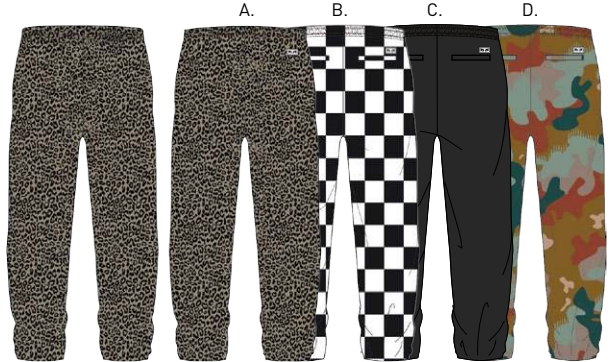


| | COLOR | S | M | L | XL | XXL |
|----|---------------|---|---|---|----|-----|
| A. | KHAKI LEOPARD | | | | | |
| B. | CHECKER | | | | | |
| C. | BLACK | | | | | |
| D. | DRIP CAMO | | | | | |

EASY PANT II

142020112

- Relaxed fit
- Classic athletic pant with an elastic waistband and drawcord. Features a mesh lining, on-seam front pockets, elastic cuffs, and eyes logo label at back pocket
- 100% Polyester



| | COLOR | XXS | XS | S | M | L | XL | XXL |
|----|---------------|-----|----|---|---|---|----|-----|
| A. | KHAKI LEOPARD | | | | | | | |
| B. | CHECKER | | | | | | | |
| C. | BLACK | | | | | | | |
| D. | DRIP CAMO | | | | | | | |

“EYES” GROUP

EYES JACKET

121800350

- Regular fit
- A zip up front track jacket with welt pockets. Elastic at cuffs and waistband. Eyes woven label at front chest and Eyes logo taping along sleeves
- 100% Polyester



| | COLOR | S | M | L | XL | XXL |
|----|------------|---|---|---|----|-----|
| A. | HOT RED | | | | | |
| B. | BLACK | | | | | |
| C. | DUSTY TEAL | | | | | |

EYES PANT

142020120

- Relaxed fit
- Classic athletic pant with an elastic waistband and braided drawcord. Features on-seam front pockets, single welt back pockets, elastic cuffs, custom Eyes logo taping down sides of pant and woven label at back right pocket
- 100% Polyester



| | COLOR | XXS | XS | S | M | L | XL | XXL |
|----|------------|-----|----|---|---|---|----|-----|
| A. | HOT RED | | | | | | | |
| B. | BLACK | | | | | | | |
| C. | DUSTY TEAL | | | | | | | |

KNIT GROUP



“BORSTAL” GROUP

BORSTAL TRACK JACKET

111620034

- Regular fit
- Zip up track jacket with solid rib trims. Features a tricot knit fabrication with front coil zipper, antique silver logo zipper pull, front welt pockets and logo direct embroidery
- 100% Polyester

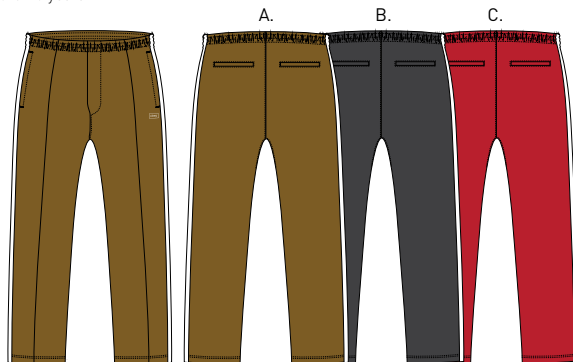


| | COLOR | S | M | L | XL | XXL |
|----|----------|---|---|---|----|-----|
| A. | TAPENADE | | | | | |
| B. | BLACK | | | | | |
| C. | HOT RED | | | | | |

BORSTAL TRACK PANT

142020109

- Regular fit
- Classic track pant with an elastic waistband and drawcord. Features on-seam front pockets, single welt back pockets, pintuck detail, contrast side stripes and logo embroidery at front left leg panel
- 100% Polyester



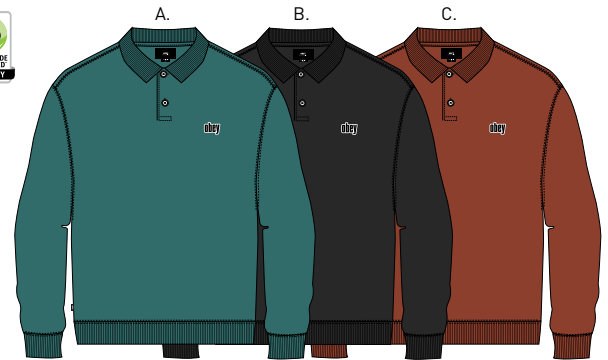
| | COLOR | XXS | XS | S | M | L | XL | XXL |
|----|----------|-----|----|---|---|---|----|-----|
| A. | TAPENADE | | | | | | | |
| B. | BLACK | | | | | | | |
| C. | HOT RED | | | | | | | |

“SAUCER” VELOUR GROUP

SAUCER POLO

111620037

- Custom box fit
- Long sleeve polo fleece with rib collar and trims. Features a velour fabrication, logo buttons and logo embroidery at chest
- Fair trade factory certified
- 80% Cotton / 20% Polyester

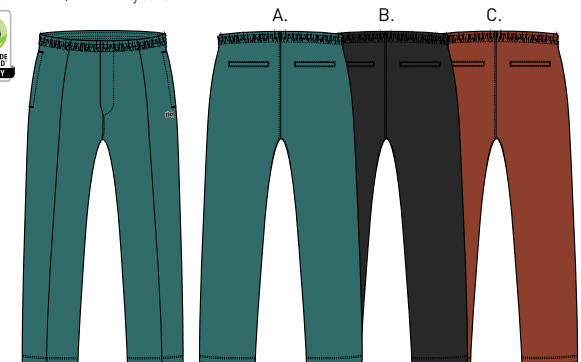


| | COLOR | S | M | L | XL | XXL |
|----|------------|---|---|---|----|-----|
| A. | DUSTY TEAL | | | | | |
| B. | BLACK | | | | | |
| C. | PICANTE | | | | | |

SAUCER PANT

142020124

- Regular fit
- Classic track pant with an elastic waistband and braided drawcord. Features on-seam front pockets, pintuck detail at front and embroidery at front left leg panel
- Fair trade factory certified
- 80% Cotton / 20% Polyester



| | COLOR | XXS | XS | S | M | L | XL | XXL |
|----|------------|-----|----|---|---|---|----|-----|
| A. | DUSTY TEAL | | | | | | | |
| B. | BLACK | | | | | | | |
| C. | PICANTE | | | | | | | |

DENIM



142020119 HARDWORK CARPENTER PANT

JUVEE
SKINNY FIT

- SITS BELOW WAIST
- SEAT AND THIGH
- SKINNY STRAIGHT LEG
- REGULAR & FLOODED INSEAM AVAILABLE
- STRETCH FABRICATION
- 13 1/2" LEG OPENING



SITS BELOW WAIST

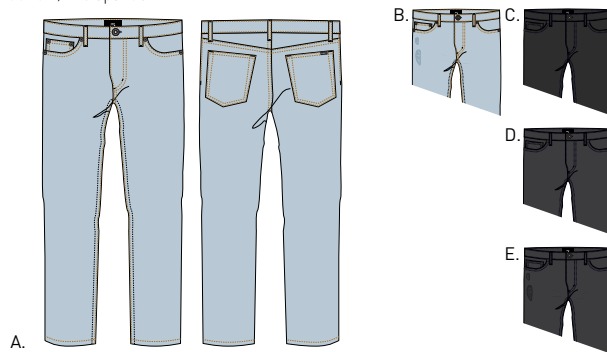
SKINNY STRAIGHT LEG

13 1/2" LEG OPENING

JUVEE DENIM II

142010055

- Skinny straight fit
- Classic skinny five-pocket denim pant. Features zipper fly and logo shank button closure, traditional front pockets with coin pocket, patch back pockets, and woven label at back right pocket
- 99% Cotton / 1% Spandex

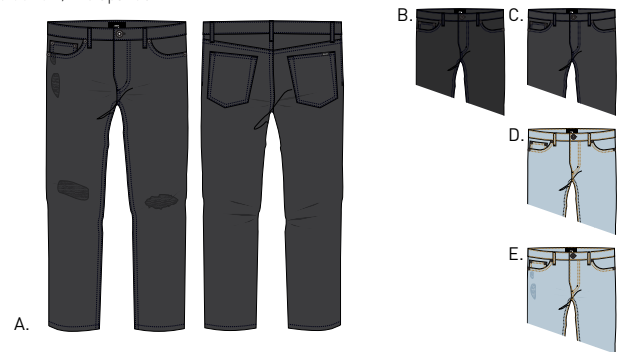


| | COLOR | 28 | 30 | 31 | 32 | 33 | 34 | 36 | 38 |
|----|------------------|----|----|----|----|----|----|----|----|
| A. | LIGHT INDIGO | | | | | | | | |
| B. | DESTROYED INDIGO | | | | | | | | |
| C. | TRUE BLACK | | | | | | | | |
| D. | FADED BLACK | | | | | | | | |
| E. | DESTROYED BLACK | | | | | | | | |

JUVEE FLOODED DENIM II

142010056

- Skinny straight fit with flooded inseam length
- Classic skinny five pocket denim pant. Features zipper fly and logo shank button closure, traditional front pockets with coin pocket, patch back pockets, and woven label at back right pocket.
- 99% Cotton / 1% Spandex



| | COLOR | 28 | 30 | 31 | 32 | 33 | 34 | 36 | 38 |
|----|------------------|----|----|----|----|----|----|----|----|
| A. | DESTROYED BLACK | | | | | | | | |
| B. | FADED BLACK | | | | | | | | |
| C. | TRUE BLACK | | | | | | | | |
| D. | LIGHT INDIGO | | | | | | | | |
| E. | DESTROYED INDIGO | | | | | | | | |

NEW THREAT
SLIM STRAIGHT FIT

- SITS BELOW WAIST
- SLIM SEAT AND THIGH
- SLIM STRAIGHT LEG
- REGULAR & FLOODED INSEAM AVAILABLE
- 14 1/2" LEG OPENING



SITS BELOW WAIST

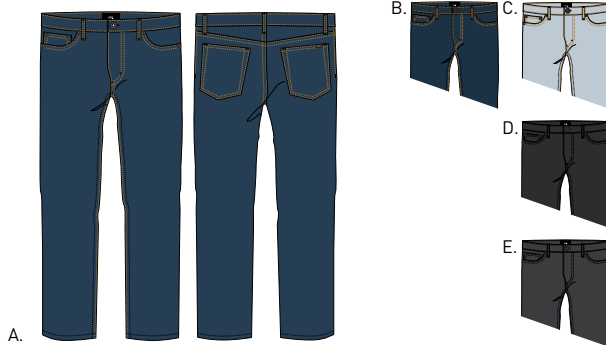
SLIM STRAIGHT LEG

14 1/2" LEG OPENING

NEW THREAT DENIM II

142010053

- Slim straight fit
- Classic slim five pocket denim pant. Features zipper fly and logo shank button closure, traditional front pockets with coin pocket, patch back pockets, and woven label at back right pocket
- 100% Cotton



| | COLOR | 28 | 30 | 31 | 32 | 33 | 34 | 36 | 38 |
|----|-------------------|----|----|----|----|----|----|----|----|
| A. | STONE WASH INDIGO | | | | | | | | |
| B. | RAW INDIGO | | | | | | | | |
| C. | LIGHT INDIGO | | | | | | | | |
| D. | TRUE BLACK | | | | | | | | |
| E. | DUSTY BLACK | | | | | | | | |

NEW THREAT CUT DENIM

142010054

- Slim straight fit with flooded inseam length
- Classic slim five pocket denim pant with raw cut hem. Features zipper fly and logo shank button closure, traditional front pockets with coin pocket, patch back pockets, and woven label at back right pocket
- 100% Cotton



| | COLOR | 28 | 30 | 31 | 32 | 33 | 34 | 36 | 38 |
|----|----------------|----|----|----|----|----|----|----|----|
| A. | BLEACHED BLACK | | | | | | | | |

BENDER
STANDARD FIT

- SITS BELOW WAIST
- REGULAR SEAT AND THIGH
- SLIGHT TAPERED LEG
- REGULAR & FLOODED INSEAM AVAILABLE
- 15" LEG OPENING



SITS BELOW WAIST

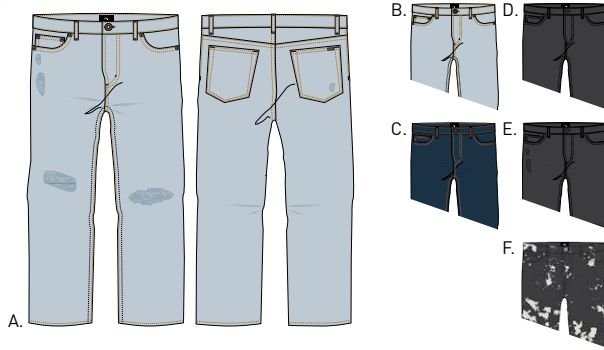
SLIGHT TAPER AT LEG

15" LEG OPENING

BENDER 90'S DENIM

142010050

- Standard fit with flooded inseam length
- Classic five pocket denim pant. Features zipper fly and logo shank button closure, traditional front pockets with coin pocket, patch back pockets, and woven label at back right pocket
- 100% Cotton



| | COLOR | 28 | 30 | 31 | 32 | 33 | 34 | 36 | 38 |
|----|---------------------|----|----|----|----|----|----|----|----|
| A. | DESTROYED INDIGO | | | | | | | | |
| B. | LIGHT INDIGO | | | | | | | | |
| C. | STONE WASHED INDIGO | | | | | | | | |
| D. | DUSTY BLACK | | | | | | | | |
| E. | DESTROYED BLACK | | | | | | | | |
| F. | BLEACHED BLACK | | | | | | | | |

BENDER CARPENTER DENIM

142010060

- Standard fit with flooded inseam length
- Classic denim carpenter pant. Features zipper fly and logo shank button closure, slash front pockets with coin pocket, patch back pockets, carpenter pocket details and woven label at back right pocket
- 100% Cotton



| | COLOR | 28 | 30 | 31 | 32 | 33 | 34 | 36 | 38 |
|----|--------------|----|----|----|----|----|----|----|----|
| A. | LIGHT INDIGO | | | | | | | | |
| B. | DUSTY BLACK | | | | | | | | |

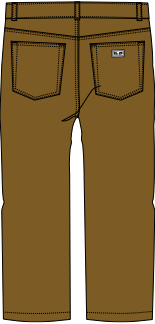
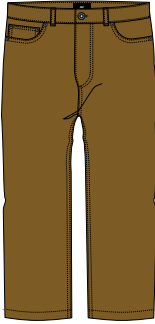
HARDWORK
CLASSIC FIT




HARDWORK DENIM

- Classic fit
- Classic five-pocket denim pant. Features zipper fly and logo shank button closure, traditional front pockets with coin pocket, patch back pockets, and woven label at back right pocket
- 100% Cotton

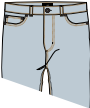
142010063




B.



C.



D.


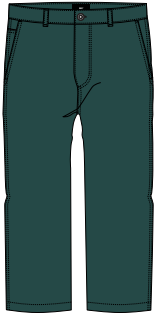


| | COLOR | 28 | 30 | 31 | 32 | 33 | 34 | 36 | 38 |
|----|--------------|----|----|----|----|----|----|----|----|
| A. | TAPENADE | | | | | | | | |
| B. | PINE | | | | | | | | |
| C. | LIGHT INDIGO | | | | | | | | |
| D. | DUSTY BLACK | | | | | | | | |


HARDWORK CARPENTER PANT

- Classic fit
- Classic carpenter pant. Features zipper fly and logo shank button closure, slash front pockets with coin pocket, patch back pockets, carpenter pocket details, and woven label at back right pocket
- 100% Cotton


142020119




B.



C.



D.



| | COLOR | 28 | 30 | 31 | 32 | 33 | 34 | 36 | 38 |
|----|-----------|----|----|----|----|----|----|----|----|
| A. | DARK TEAL | | | | | | | | |
| B. | BLACK | | | | | | | | |
| C. | PICANTE | | | | | | | | |
| D. | TAPENADE | | | | | | | | |



DENIM FIT GUIDE

JUVEE DENIM

- SITS BELOW WAIST
- SLIM SEAT AND THIGH
- SKINNY STRAIGHT LEG
- REGULAR & FLOODED INSEAM AVAILABLE
- STRETCH FABRICATION
- 13 1/2" LEG OPENING

SKINNY FIT



NEW THREAT DENIM

- SITS BELOW WAIST
- SLIM SEAT AND THIGH
- SLIM STRAIGHT LEG
- REGULAR & FLOODED INSEAM AVAILABLE
- 14 1/2" LEG OPENING

SLIM STRAIGHT FIT



BENDER DENIM

- SITS BELOW WAIST
- REGULAR SEAT AND THIGH
- SLIGHT TAPERED LEG
- REGULAR & FLOODED INSEAM AVAILABLE
- 15" LEG OPENING

STANDARD FIT



DENIM FIT GUIDE

HARDWORK DENIM

- SITS AT WAIST
- CLASSIC SEAT AND THIGH
- CLASSIC STRAIGHT LEG
- REGULAR INSEAM
- 16.5" LEG OPENING

CLASSIC FIT



LEATHERS



121800239 BASTARDS PU JACKET

LEATHERS

CLIFTON LEOPARD JACKET

121800322

- Regular fit
- Soft suede zip up bomber jacket with soft ribbing at collar, cuffs and waistband. Welt pocket entry at bottom and smooth interior body lined with leopard print
- SHELL: 100% Leather; LINING: 100% Polyester



B.



| | COLOR | S | M | L | XL | XXL |
|----|----------|---|---|---|----|-----|
| A. | PINE | | | | | |
| B. | TAPENADE | | | | | |

BASTARDS LEATHER JACKET

121800233

- Slim fit
- Soft leather motorcycle jacket with all silver hardware details and zip up pockets at chest, bottom front and bottom waist money belt. Interior body with OBEY logo debossing. Enamel pin at lapel
- SHELL: 100% Leather; LINING: 100% Acetate



| | COLOR | S | M | L | XL | XXL |
|----|-------|---|---|---|----|-----|
| A. | BLACK | | | | | |

FAUX LEATHERS

BASTARDS PU JACKET

121800239

- Slim fit
- Soft faux leather motorcycle jacket with all silver hardware details and zip up pockets at chest, bottom front and bottom waist money belt. Interior body with soft contrast fabrication. Enamel pin at lapel
- SHELL: 100% Polyurethane; LINING: 100% Polyester



| | COLOR | S | M | L | XL | XXL |
|----|-------|---|---|---|----|-----|
| A. | BLACK | | | | | |

JACKETS



121800353 BLIZZARD POPLIN JACKET

JACKETS

BLIZZARD POPLIN JACKET

121800353

- Regular fit
- A cotton poplin parka with interior body and interior quilted hood in contrast color. Hidden zipper with exposed snaps at front closure. Removable Eyes velcro patch at sleeve
- SHELL: 100% Cotton; LINING: 100% Nylon; FILLING: 100% Polyester



| | COLOR | S | M | L | XL | XXL |
|----|------------------|---|---|---|----|-----|
| A. | TIGER CAMO | | | | | |
| B. | TAPENADE / BLACK | | | | | |

TIMELESS JACKET

121800352

- Regular fit
- A nylon bomber jacket with interior quilted body. Soft rib at standing collar, cuffs and waistband. Large OBEY logo embroidery at sleeve
- SHELL: 100% Nylon; LINING: 100% Polyester; FILLING: 100% Polyester



| | COLOR | S | M | L | XL | XXL |
|----|-------|---|---|---|----|-----|
| A. | BLACK | | | | | |
| B. | PINE | | | | | |

DIVISION DENIM JACKET

121800356

- Regular fit
- A zip up denim jacket style with shank buttons at cuffs and waistband tabs. Welt pockets at front and interior body lined with sherpa fabrication. Large OBEY embroidery at back side
- SHELL: 100% Cotton; LINING: 100% Polyester



| | COLOR | S | M | L | XL | XXL |
|----|--------------|---|---|---|----|-----|
| A. | LIGHT INDIGO | | | | | |
| B. | DUSTY BLACK | | | | | |

PACKING VEST

121810006

- Oversized fit
- A baggy fit zip up vest with large four patch pockets at front. Logo shank buttons at pocket flaps and pouch pocket with zipper closure at back. Logo embroidery at back side and eyes woven label at front pocket flap
- SHELL: 60% Cotton / 40% Polyester; LINING: 100% Polyester; FILLING: 100% Polyester



| | COLOR | S | M | L | XL | XXL |
|----|-------|---|---|---|----|-----|
| A. | BLACK | | | | | |
| B. | PINE | | | | | |

CROSTOWN II ANORAK

121800337

- Regular fit
- Technical hooded pullover anorak with large zip pouch at front and side welt pockets. Waist ties at bottom hem and drawcords at hood to cinch. Removable velcro eyes patch at sleeve and logo screen print at front chest
- 100% Polyester



| | COLOR | S | M | L | XL | XXL |
|----|------------|---|---|---|----|-----|
| A. | DUSTY TEAL | | | | | |
| B. | HOT RED | | | | | |
| C. | BLACK | | | | | |

JACKETS

DERBY BOX PARKA

121800339

- Oversized fit
- A custom box fit parka jacket with interior quilted body. Stowaway hood tucked under standing collar. Large patch pockets at bottom front and removable velcro Eyes patch at front chest
- 100% Polyester



A.



B.

| | COLOR | S | M | L | XL | XXL |
|----|------------|---|---|---|----|-----|
| A. | BLACK | | | | | |
| B. | DUSTY TEAL | | | | | |

BOUNCER PUFFER JACKET

121800336

- Regular fit
- Down alternative puffer jacket with stowaway hood tucked under standing collar. Elastic at cuffs and bottom waistband. Hidden zipper closure at bottom welt pockets. Eyes label at front chest
- 100% Polyester



A.



B.



C.

| | COLOR | S | M | L | XL | XXL |
|----|---------------|---|---|---|----|-----|
| A. | KHAKI LEOPARD | | | | | |
| B. | CHECKER | | | | | |
| C. | BLACK | | | | | |

RUNAROUND EYES JACKET

121800333

- Regular fit
- Technical pullover anorak with mesh lining and large pouch pocket with side welt pockets at front. Zip front closure along with stowaway hood tucked under standing collar. Eyes label at front pouch pocket flap
- 100% Polyester



A.



B.



C.

| | COLOR | S | M | L | XL | XXL |
|----|-----------|---|---|---|----|-----|
| A. | DRIP CAMO | | | | | |
| B. | CHECKER | | | | | |
| C. | BLACK | | | | | |

MORPHINE BOX PARKA

121800343

- Oversized custom box fit
- Parka jacket with interior quilted body. Built in hood with drawcord ties in hood, hidden at waist and bottom opening. Hidden snaps and zipper closure at center front. Eyes woven label at front chest
- SHELL: 100% Cotton; LINING: 100% Polyester; FILLING: 100% Polyester



A.



B.



C.

| | COLOR | S | M | L | XL | XXL |
|----|-----------|---|---|---|----|-----|
| A. | BLACK | | | | | |
| B. | DRIP CAMO | | | | | |
| C. | DARK TEAL | | | | | |

DEBASER II JACKET

121800338

- Regular fit
- A zip up cropped golf jacket with hood and stowaway hood tucked under standing collar. Interior body is lined with smooth leopard print and logo screen print at front chest
- SHELL: 100% Cotton; LINING: 100% Polyester; FILLING: 100% Polyester



A.



B.



C.

| | COLOR | S | M | L | XL | XXL |
|----|-----------|---|---|---|----|-----|
| A. | DARK TEAL | | | | | |
| B. | TAPENADE | | | | | |
| C. | BLACK | | | | | |

DILLINGER HOODED JACKET

121800346

- Regular fit
- A zip up cotton twill hooded trucker jacket with interior body lined with sherpa. Interior sleeves are diamond quilted and lightly insulated. Soft rib at cuffs and waistband. Logo embroidery at front chest
- SHELL: 100% Cotton; LINING: 100% Polyester



A.



B.



C.

| | COLOR | S | M | L | XL | XXL |
|----|-------|---|---|---|----|-----|
| A. | ROSE | | | | | |
| B. | PINE | | | | | |
| C. | BLACK | | | | | |

JACKETS

DILLINGER TRUCKER JACKET

121800345

- Regular fit
- A zip up cotton twill trucker jacket with interior body lined with sherpa. Interior sleeve is diamond quilted and lightly insulated. Logo shank at back waist tab and cuff closure. Logo embroidery at front chest
- SHELL: 100% Cotton; LINING: 100% Polyester

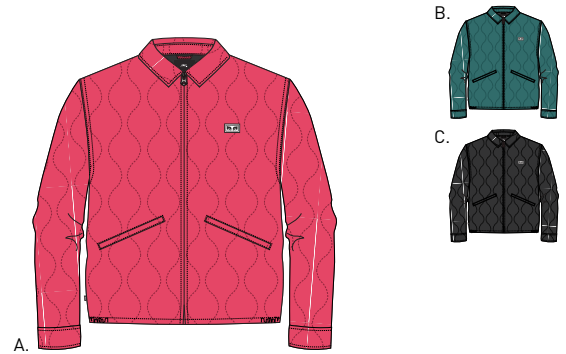


| | COLOR | S | M | L | XL | XXL |
|----|-------|---|---|---|----|-----|
| A. | PINE | | | | | |
| B. | ROSE | | | | | |
| C. | BLACK | | | | | |

DROPOUT LINER JACKET

121800335

- Regular fit
- A slightly cropped gas station jacket with exaggerated pivoted welt pockets at bottom. Quilting on exterior side and quilted through interior side. Eyes label at front chest
- 100% Polyester



| | COLOR | S | M | L | XL | XXL |
|----|------------|---|---|---|----|-----|
| A. | CORAL PINK | | | | | |
| B. | DUSTY TEAL | | | | | |
| C. | BLACK | | | | | |

RISE UP BDU JACKET

121800341

- Regular fit
- A military cotton ripstop, BDU style jacket with hidden snap and zipper closure at center front. Four patch pockets at front with hidden button closure and Eyes woven label at chest pocket flap
- 100% Cotton

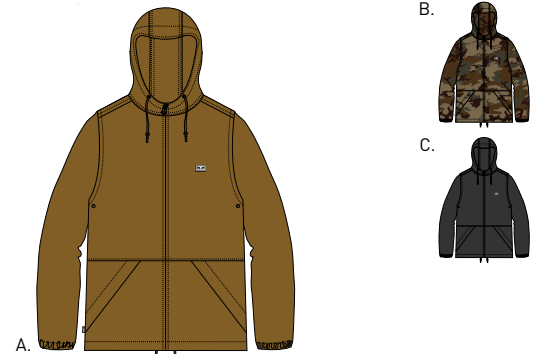


| | COLOR | S | M | L | XL | XXL |
|----|---------------|---|---|---|----|-----|
| A. | OVERSIZE CAMO | | | | | |
| B. | DRIFT CAMO | | | | | |

RUSSET PARKA

121800349

- Regular fit
- A windbreaker zip up jacket with built in snorkel hood and drawcord to cinch. Hidden zipper closure at bottom welt pocket. Drawcord ties at bottom opening. Eyes woven label sewn at front chest
- SHELL: 60% Cotton / 40% Polyester; LINING: 100% Polyester

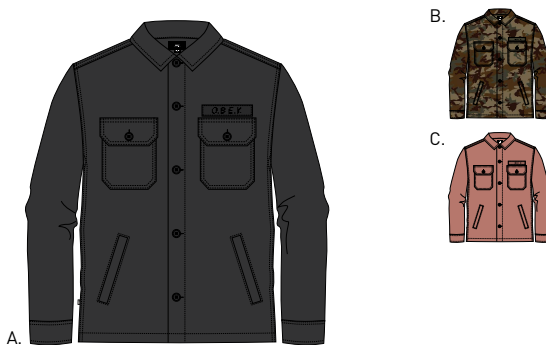


| | COLOR | S | M | L | XL | XXL |
|----|------------|---|---|---|----|-----|
| A. | TAPENADE | | | | | |
| B. | FIELD CAMO | | | | | |
| C. | BLACK | | | | | |

STATION SHIRT JACKET

121160013

- Regular fit
- Durable vintage CPO military - inspired shirt jacket in twill. Double chest pockets and bottom welt pockets at front. Canvas logo name tag directly sewn above chest pocket
- 60% Cotton / 40% Polyester



| | COLOR | S | M | L | XL | XXL |
|----|------------|---|---|---|----|-----|
| A. | BLACK | | | | | |
| B. | FIELD CAMO | | | | | |
| C. | ROSE | | | | | |

IGGY INSULATED JACKET

121800348

- Regular fit
- A twill M-65 military-inspired jacket with patch pockets at front. Zip away at standing collar for hood to roll out. Adjustable velcro closure at sleeve openings, hidden snaps and zipper at center front. Logo canvas taping above chest pocket
- SHELL: 60% Cotton / 40% Polyester; LINING: 100% Polyester; FILLING: 100% Polyester



| | COLOR | S | M | L | XL | XXL |
|----|------------|---|---|---|----|-----|
| A. | ROSE | | | | | |
| B. | BLACK | | | | | |
| C. | FIELD CAMO | | | | | |

JACKETS

SINGFORD PARKA

121800340

- Regular fit
- A durable and heavily insulated hooded long stadium jacket with exposed snaps and hidden zipper at center front closure. Diamond quilted interior body in contrast color and logo screen print at front chest
- 100% Polyester



A.

B.



C.



| | COLOR | S | M | L | XL | XXL |
|----|------------|---|---|---|----|-----|
| A. | FIELD CAMO | | | | | |
| B. | BLACK | | | | | |
| C. | PINE | | | | | |

HELLER II JACKET

121800287

- Regular fit
- A heavyweight parka with patch pockets at chest and bottom. Interior body lined with sherpa. Drawcords around hood to cinch and rib hidden under sleeve opening. Logo mil spec printed above bottom pocket
- SHELL: 100% Cotton; LINING & FILLING: 100% Polyester



A.

B.



C.



| | COLOR | S | M | L | XL | XXL |
|----|----------|---|---|---|----|-----|
| A. | TAPENADE | | | | | |
| B. | ARMY | | | | | |
| C. | BLACK | | | | | |



SWEATERS



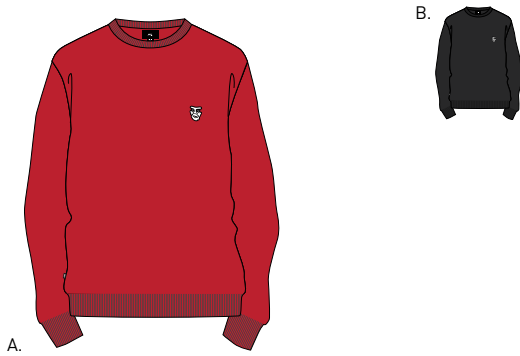
151000039 SCORPION SWEATER

SWEATERS

COURT SWEATER

151000040

- Regular fit
- Crew neck sweater. Features an acrylic like mohair yarn with OBEY Creeper embroidery at chest
- 100% Acrylic



| | COLOR | S | M | L | XL | XXL |
|----|---------|---|---|---|----|-----|
| A. | HOT RED | | | | | |
| B. | BLACK | | | | | |

COURT CARDIGAN II

151010013

- Regular fit
- Button front cardigan. Features an acrylic like mohair yarn with front pocket and OBEY creeper embroidery at chest
- 100% Acrylic

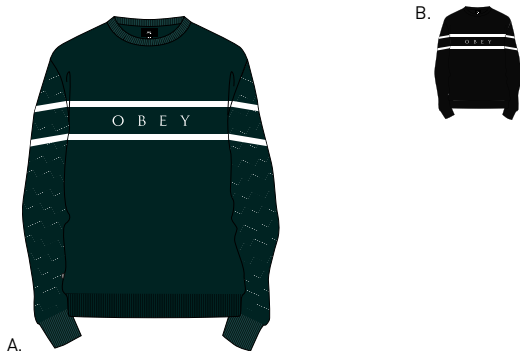


| | COLOR | S | M | L | XL | XXL |
|----|------------|---|---|---|----|-----|
| A. | BLACK | | | | | |
| B. | DUSTY TEAL | | | | | |

ROEBLING SWEATER

151000041

- Regular fit
- Wool blend crew neck sweater. Features an all over cable knit pattern with contrast stripes at chest and top sleeves
- 70% Acrylic / 30% Wool



| | COLOR | S | M | L | XL | XXL |
|----|-----------------|---|---|---|----|-----|
| A. | DARK TEAL MULTI | | | | | |
| B. | BLACK MULTI | | | | | |

SCORPION SWEATER

151000039

- Regular fit
- Cotton blend crew neck sweater with solid rib trims. Features an all over OBEY original Scorpion pattern
- 60% Cotton / 40% Polyester



| | COLOR | S | M | L | XL | XXL |
|----|-------------|---|---|---|----|-----|
| A. | PINE MULTI | | | | | |
| B. | BLACK MULTI | | | | | |

WOVENS



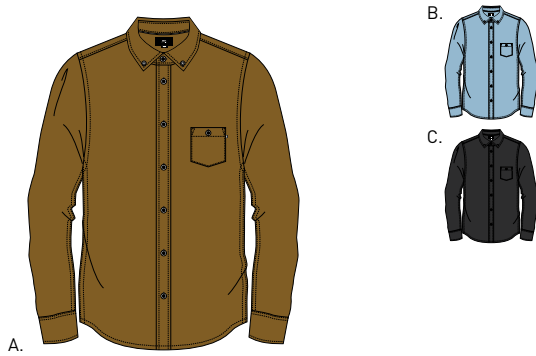
181200250 TRAPPER WOVEN

WOVENS

KEBLE DENIM WOVEN LS

181200221

- Slim fit
- A proper button down collar shirt in denim with a thin contrast piping at underside of collarstand. Single chest pocket with button closure. Flag label at chest pocket and white pearlied buttons for closures
- 100% Cotton



| | COLOR | S | M | L | XL | XXL |
|----|----------|---|---|---|----|-----|
| A. | TAPENADE | | | | | |
| B. | BLUE | | | | | |
| C. | BLACK | | | | | |

DARCEY WOVEN

181200246

- Slim fit
- Long sleeve button up shirt in all over mini Rosebud print. Single chest pocket with strip label and white pearlied buttons for closures
- 100% Cotton

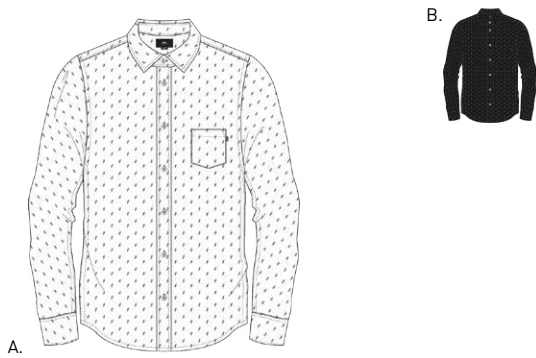


| | COLOR | S | M | L | XL | XXL |
|----|-------------|---|---|---|----|-----|
| A. | BLACK MULTI | | | | | |
| B. | WHITE MULTI | | | | | |

PEARCE WOVEN

181200251

- Slim fit
- Long sleeve button up shirt in all over mini Feather print. Single chest pocket with flag label and white pearlied buttons for closures
- 100% Cotton

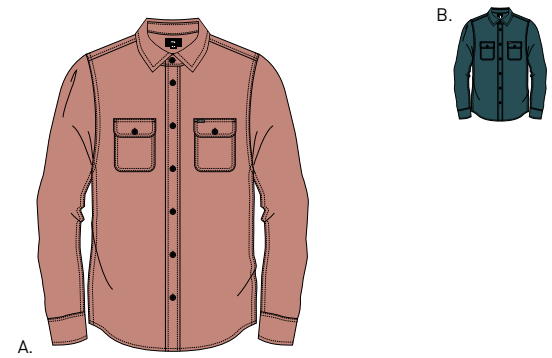


| | COLOR | S | M | L | XL | XXL |
|----|-------------|---|---|---|----|-----|
| A. | WHITE MULTI | | | | | |
| B. | BLACK MULTI | | | | | |

OUTPOST WOVEN

181200237

- Regular fit long sleeve button up shirt
- A soft flannel shirt in solid color. Double chest pockets and button down pocket flaps with strip label. Black gloss buttons for closures
- 100% Cotton



| | COLOR | S | M | L | XL | XXL |
|----|-------|---|---|---|----|-----|
| A. | ROSE | | | | | |
| B. | PINE | | | | | |

ECHO WOVEN

181200249

- Slim fit
- Long sleeve button up shirt in stripe cotton poplin. Single chest pocket with strip label and white pearlied buttons for closures
- 100% Cotton



| | COLOR | S | M | L | XL | XXL |
|----|-------------------|---|---|---|----|-----|
| A. | DUSTY CORAL MULTI | | | | | |
| B. | WHITE MULTI | | | | | |

WOVENS

HOMEBOUND WOVEN

181200238

- Regular fit
- A heavy flannel plaid shirt with side pocket entry. Double chest pockets and button down pocket flaps with strip label. White pearlized buttons for closures
- 100% Cotton



| | COLOR | S | M | L | XL | XXL |
|----|--------------------|---|---|---|----|-----|
| A. | CREAM MULTI | | | | | |
| B. | BLACK FOREST MULTI | | | | | |

VEDDER WOVEN

181200245

- Regular fit
- A soft flannel large plaid shirt. Double chest pockets and button down pocket flaps with strip label. Black gloss buttons for closures
- 100% Cotton



| | COLOR | S | M | L | XL | XXL |
|----|-----------------|---|---|---|----|-----|
| A. | DARK TEAL MULTI | | | | | |
| B. | ROSE MULTI | | | | | |

HIRSCH WOVEN

181200247

- Regular fit
- Long sleeve button up shirt in a soft plaid flannel. Double chest pocket with strip label and white pearlized buttons for closures
- 100% Cotton



| | COLOR | S | M | L | XL | XXL |
|----|----------------|---|---|---|----|-----|
| A. | TAPENADE MULTI | | | | | |
| B. | NAVY MULTI | | | | | |

MYLES WOVEN

181200248

- Regular fit
- Long sleeve button up shirt in a soft plaid flannel. Double chest pocket with strip label and solid gloss black buttons for closures
- 100% Cotton



| | COLOR | S | M | L | XL | XXL |
|----|--------------|---|---|---|----|-----|
| A. | YELLOW MULTI | | | | | |
| B. | TEAL MULTI | | | | | |

TRAPPER WOVEN

181200250

- Regular fit
- Long sleeve button up shirt in a soft plaid flannel. Double chest pocket with strip label and white pearlized buttons for closures
- 100% Cotton



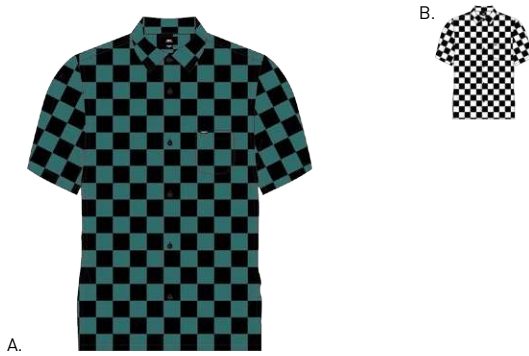
| | COLOR | S | M | L | XL | XXL |
|----|-------------------|---|---|---|----|-----|
| A. | TAPENADE MULTI | | | | | |
| B. | LIGHT MAUVE MULTI | | | | | |

WOVENS

PROSPECT WOVEN SS

- Regular fit
- A checkered print rayon shirt. Single chest pocket with strip label and solid black gloss buttons for closures
- 100% Viscose

181210213

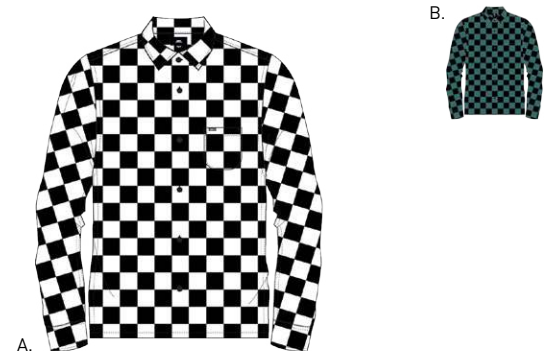


| | COLOR | S | M | L | XL | XXL |
|----|-------------|---|---|---|----|-----|
| A. | PINE MULTI | | | | | |
| B. | WHITE MULTI | | | | | |

PROSPECT WOVEN LS

- Regular fit
- A checkered print rayon shirt. Single chest pocket with strip label and solid black gloss buttons for closures
- 100% Viscose

181200242



| | COLOR | S | M | L | XL | XXL |
|----|-------------|---|---|---|----|-----|
| A. | WHITE MULTI | | | | | |
| B. | PINE MULTI | | | | | |

DIRTY LEO WOVEN SS

- Regular fit
- A leopard print rayon shirt. Single chest pocket with strip label and solid black gloss buttons for closures
- 100% Viscose

181210214



| | COLOR | S | M | L | XL | XXL |
|----|-------------|---|---|---|----|-----|
| A. | KHAKI MULTI | | | | | |
| B. | TEAL MULTI | | | | | |

DIRTY LEO WOVEN LS

- Regular fit
- A leopard print rayon shirt. Single chest pocket with strip label and solid black gloss buttons for closures
- 100% Viscose

181200243

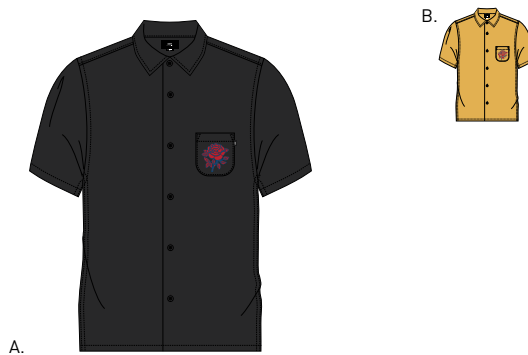


| | COLOR | S | M | L | XL | XXL |
|----|-------------|---|---|---|----|-----|
| A. | TEAL MULTI | | | | | |
| B. | KHAKI MULTI | | | | | |

THORN WOVEN SS

- Regular fit
- A satin shirt with rose embroidered at front chest pocket. Flag label at side of pocket and matching color pearlized buttons for closures
- 100% Polyester

181210227



| | COLOR | S | M | L | XL | XXL |
|----|--------------|---|---|---|----|-----|
| A. | BLACK | | | | | |
| B. | FADED YELLOW | | | | | |

CUSTOM FLEECE



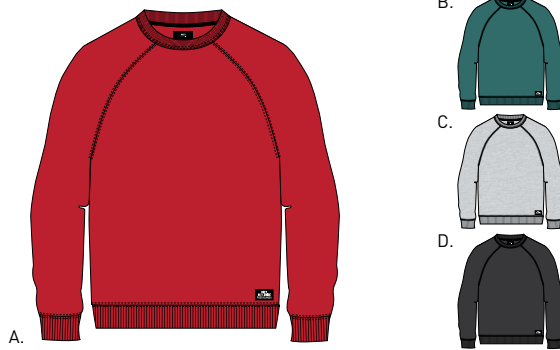
111620043 BRIDGES MOCK NECK ZIP

CUSTOM FLEECE

LOFTY CREATURE COMFORTS CREW II

111620025

- Slim fit
- Crew neck with raglan sleeves and solid rib trims. Features an extra soft fleece fabrication and a mil spec label above front rib
- 60% Cotton / 40% Polyester

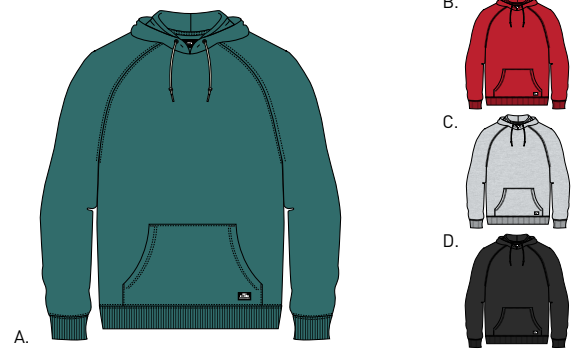


| | COLOR | S | M | L | XL | XXL |
|----|-----------------------|---|---|---|----|-----|
| A. | HOT RED | | | | | |
| B. | DUSTY TEAL | | | | | |
| C. | ATHLETIC HEATHER GREY | | | | | |
| D. | BLACK | | | | | |

LOFTY CREATURE COMFORTS HOOD II

111620026

- Slim fit
- Hooded pullover with raglan sleeves and solid rib trims. Features an extra soft fleece fabrication and a mil spec label on pocket
- 60% Cotton / 40% Polyester

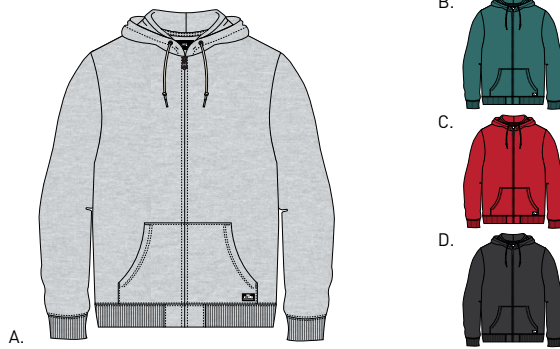


| | COLOR | S | M | L | XL | XXL |
|----|-----------------------|---|---|---|----|-----|
| A. | DUSTY TEAL | | | | | |
| B. | HOT RED | | | | | |
| C. | ATHLETIC HEATHER GREY | | | | | |
| D. | BLACK | | | | | |

LOFTY COMFORTS ZIP HOOD

111620027

- Slim fit
- Zip up hooded pullover with solid rib trims. Features an extra soft fleece fabrication with hidden front zipper and front pocket and a mil spec label on pocket
- 60% Cotton / 40% Polyester

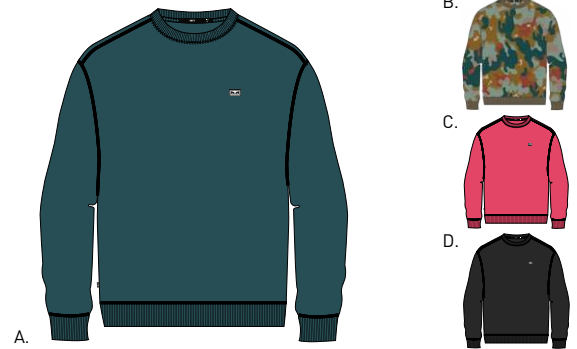


| | COLOR | S | M | L | XL | XXL |
|----|-----------------------|---|---|---|----|-----|
| A. | ATHLETIC HEATHER GREY | | | | | |
| B. | DUSTY TEAL | | | | | |
| C. | HOT RED | | | | | |
| D. | BLACK | | | | | |

ALL EYEZ CREW

112480022

- Custom box fit
- Fleece crew neck with solid rib trims. Features a fleece fabrication and an eyes logo label at chest
- Fair trade factory certified
- 84% Cotton / 16% Polyester



| | COLOR | S | M | L | XL | XXL |
|----|------------|---|---|---|----|-----|
| A. | PINE | | | | | |
| B. | DRIP CAMO | | | | | |
| C. | CORAL PINK | | | | | |
| D. | BLACK | | | | | |

ALL EYEZ HOOD

112470017

- Custom box fit
- Hooded fleece pullover with front pocket and solid rib trims. Features a fleece fabrication and an eyes logo label at chest
- Fair trade factory certified
- 84% Cotton / 16% Polyester

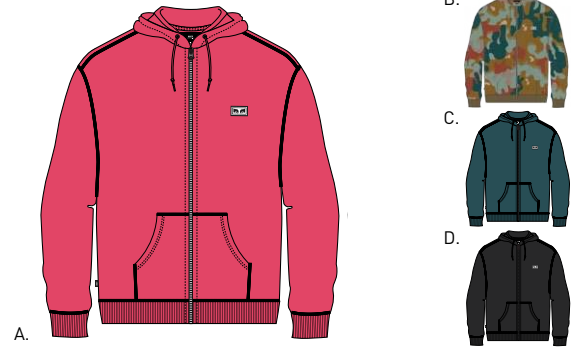


| | COLOR | S | M | L | XL | XXL |
|----|------------|---|---|---|----|-----|
| A. | DRIP CAMO | | | | | |
| B. | PINE | | | | | |
| C. | CORAL PINK | | | | | |
| D. | BLACK | | | | | |

ALL EYEZ ZIP HOOD

112460002

- Custom box fit
- Hooded fleece pullover with front pocket and solid rib trims. Features a fleece fabrication with exposed nickel zipper and an eyes logo label at chest
- Fair trade factory certified
- 84% Cotton / 16% Polyester



| | COLOR | S | M | L | XL | XXL |
|----|------------|---|---|---|----|-----|
| A. | CORAL PINK | | | | | |
| B. | DRIP CAMO | | | | | |
| C. | PINE | | | | | |
| D. | BLACK | | | | | |

CUSTOM FLEECE

OBEY EYES HEAVY CREW

112480010

- Custom box fit
- Crew neck fleece pullover with solid rib trims. Features a heavyweight fleece fabrication with OBEY eyes embroidery at chest and back
- Fair trade factory certified
- Solid : 84% Cotton / 16% Polyester; Athletic Heather Grey : 74% Cotton / 26% Polyester



| | COLOR | S | M | L | XL | XXL |
|----|-----------------------|---|---|---|----|-----|
| A. | DUSTY TEAL | | | | | |
| B. | ATHLETIC HEATHER GREY | | | | | |
| C. | BLACK | | | | | |

OBEY EYES HEAVY HOOD

112470007

- Custom box fit
- Hooded fleece pullover with front pocket and solid rib trims. Features a heavyweight fleece fabrication with OBEY original embroidery at chest and back
- Fair trade factory certified
- Solid : 84% Cotton / 16% Polyester; Athletic Heather Grey : 74% Cotton / 26% Polyester



| | COLOR | S | M | L | XL | XXL |
|----|-----------------------|---|---|---|----|-----|
| A. | BLACK | | | | | |
| B. | ATHLETIC HEATHER GREY | | | | | |
| C. | DUSTY TEAL | | | | | |

ANYWAY HOOD

112470011

- Custom box fit
- Hooded fleece pullover with front pocket and solid rib trims. Features a fleece fabrication with brass hardware and OBEY logo screen print at chest
- Fair trade factory certified
- 84% Cotton / 16% Polyester



| | COLOR | S | M | L | XL | XXL |
|----|-------------|---|---|---|----|-----|
| A. | LIGHT MAUVE | | | | | |
| B. | PICANTE | | | | | |
| C. | BLACK | | | | | |

REASON ANORAK HOOD

112470035

- Custom box fit
- Hooded fleece pullover with front zip placket, pocket and solid rib trims. Features a fleece fabrication with contrast OBEY logo embroidery
- Fair trade factory certified
- 84% Cotton / 16% Polyester



| | COLOR | S | M | L | XL | XXL |
|----|------------|---|---|---|----|-----|
| A. | DRIP CAMO | | | | | |
| B. | FIELD CAMO | | | | | |
| C. | BLACK | | | | | |

NOUVELLE HOOD

112470026

- Custom box fit
- Hooded fleece pullover with front pocket and solid rib trims. Features a fleece fabrication and OBEY logo embroidery at chest
- Fair trade factory certified
- 84% Cotton / 16% Polyester



| | COLOR | S | M | L | XL | XXL |
|----|------------|---|---|---|----|-----|
| A. | LIGHT SAGE | | | | | |
| B. | LILAC | | | | | |
| C. | BLACK | | | | | |

NOUVELLE MOCK NECK ZIP

111620042

- Custom box fit
- Zip front mock neck fleece with front pockets. Features a fleece fabrication with non-exposed zipper placket and OBEY original embroidery at chest
- Fair trade factory certified
- 84% Cotton / 16% Polyester



| | COLOR | S | M | L | XL | XXL |
|----|------------|---|---|---|----|-----|
| A. | LILAC | | | | | |
| B. | LIGHT SAGE | | | | | |
| C. | BLACK | | | | | |

CUSTOM FLEECE

SID HOOD

- Custom box fit
- Hooded reversed fleece pullover with front pocket and solid rib trims. Features tonal logo embroidery at chest
- Fair trade factory certified
- 100% Cotton



A.

B.



C.



| | COLOR | S | M | L | XL | XXL |
|----|---------|---|---|---|----|-----|
| A. | PICANTE | | | | | |
| B. | LILAC | | | | | |
| C. | BLACK | | | | | |

112470033

MOUNTAIN MOCK ZIP

- Custom box fit
- Zip front mock neck polar fleece with front pockets. Features non-exposed zipper placket and OBEY logo embroidery at chest
- 100% Polyester



A.

B.



C.



| | COLOR | S | M | L | XL | XXL |
|----|-----------|---|---|---|----|-----|
| A. | TAPENADE | | | | | |
| B. | DARK TEAL | | | | | |
| C. | BLACK | | | | | |

111620039

BRIDGES MOCK NECK ZIP

- Custom box fit
- Zip front mock neck fleece with front pockets. Features non-exposed zipper placket, OBEY original embroidery at chest and OBEY Icon eyes taping down sleeves
- Fair trade factory certified
- 84% Cotton / 16% Polyester



A.

B.



C.



| | COLOR | S | M | L | XL | XXL |
|----|--------------|---|---|---|----|-----|
| A. | GOLDEN OLIVE | | | | | |
| B. | DARK TEAL | | | | | |
| C. | BLACK | | | | | |

111620043

WARP HOOD

- Custom box fit
- Hooded fleece pullover with front pocket and solid rib trims. Features OBEY logo embroidery at chest
- Fair trade factory certified
- 84% Cotton / 16% Polyester



A.

B.



C.



| | COLOR | S | M | L | XL | XXL |
|----|--------------|---|---|---|----|-----|
| A. | LILAC | | | | | |
| B. | GOLDEN OLIVE | | | | | |
| C. | BLACK | | | | | |

112470036

GUSTO HOOD

- Custom box fit
- Hooded fleece pullover with front pocket and solid rib trims. Features OBEY logo embroidery at chest
- Fair trade factory certified
- 84% Cotton / 16% Polyester



A.

B.



| | COLOR | S | M | L | XL | XXL |
|----|---------------|---|---|---|----|-----|
| A. | CHECKER | | | | | |
| B. | KHAKI LEOPARD | | | | | |

112470037

KNITS



131040014 SCRIPT CLASSIC POLO LS

KNITS

APEX TEE SS

- Regular fit
- Short sleeve crew neck tee with solid rib trims. Features a multicolor yarn-dyed stripe jersey fabrication and OBEY screen print logo at chest
- Fair trade factory certified
- 100% Cotton



131080182

| | COLOR | S | M | L | XL | XXL |
|----|------------------|---|---|---|----|-----|
| A. | TAUPE MULTI | | | | | |
| B. | LIGHT SAGE MULTI | | | | | |

APEX TEE LS

- Regular fit
- Long sleeve crew neck tee with solid rib trims. Features a multicolor yarn-dyed stripe jersey fabrication and OBEY screen print logo at chest
- Fair trade factory certified
- 100% Cotton



131030068

| | COLOR | S | M | L | XL | XXL |
|----|------------------|---|---|---|----|-----|
| A. | LIGHT SAGE MULTI | | | | | |
| B. | TAUPE MULTI | | | | | |

WISEMAKER POCKET TEE

- Regular fit
- Short sleeve crew neck tee with chest pocket and solid rib trims. Features a multicolor yarn-dyed stripe jersey fabrication and solid neckband
- Fair trade factory certified
- 100% Cotton

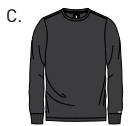
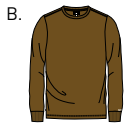
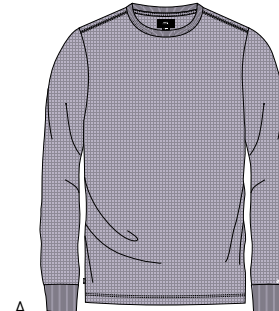


131080072

| | COLOR | S | M | L | XL | XXL |
|----|---------------|---|---|---|----|-----|
| A. | PICANTE MULTI | | | | | |
| B. | TAUPE MULTI | | | | | |

NORMAL TEE LS

- Regular fit
- Long sleeve crew neck tee with solid rib trims. Features a loose knit textured fabrication and OBEY contrast screen print logo at sleeve
- Fair trade factory certified
- 100% Cotton

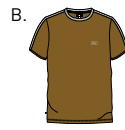


131030069

| | COLOR | S | M | L | XL | XXL |
|----|--------------|---|---|---|----|-----|
| A. | LILAC | | | | | |
| B. | TAPENADE | | | | | |
| C. | PIRATE BLACK | | | | | |

BORSTAL TEE SS

- Regular fit
- Short sleeve crew neck tee with solid rib trims. Features a heavyweight carded jersey fabrication, contrast band down the sleeves and embroidery at chest
- Fair trade factory certified
- 100% Cotton



131080224

| | COLOR | S | M | L | XL | XXL |
|----|----------|---|---|---|----|-----|
| A. | HOT RED | | | | | |
| B. | TAPENADE | | | | | |
| C. | BLACK | | | | | |

BORSTAL TEE LS

- Regular fit
- Long sleeve crew neck tee with solid rib trims. Features a heavyweight carded jersey fabrication, contrast band down the sleeves and embroidery at chest
- Fair trade factory certified
- 100% Cotton



131030076

| | COLOR | S | M | L | XL | XXL |
|----|----------|---|---|---|----|-----|
| A. | TAPENADE | | | | | |
| B. | HOT RED | | | | | |
| C. | BLACK | | | | | |

KNITS

FLIGHT CLASSIC TEE SS

- Custom box fit
- Short sleeve crew neck tee with solid rib trims. Features a heavyweight carded jersey fabrication, solid neckband and a logo embroidery at chest
- Fair trade factory certified
- 100% Cotton



A.



B.

C.

| | COLOR | S | M | L | XL | XXL |
|----|-----------------|---|---|---|----|-----|
| A. | TIGER CAMO | | | | | |
| B. | DRIP CAMO | | | | | |
| C. | CHOCO CHIP CAMO | | | | | |

FLIGHT CLASSIC TEE LS

- Custom box fit
- Long sleeve crew neck tee with solid rib trims. Features a heavyweight carded jersey fabrication, solid neckband and a logo embroidery at chest
- Fair trade factory certified
- 100% Cotton



A.



B.

C.

| | COLOR | S | M | L | XL | XXL |
|----|-----------------|---|---|---|----|-----|
| A. | DRIP CAMO | | | | | |
| B. | CHOCO CHIP CAMO | | | | | |
| C. | TIGER CAMO | | | | | |

SCRIPT CLASSIC POLO LS

- Custom box fit
- Long sleeve polo with contrast twill collar and tonel rib cuffs. Features a heavyweight jersey fabrication, OBEY logo buttons at placket a logo embroidery at chest
- Fair trade factory certified
- 100% Cotton



A.



B.

| | COLOR | S | M | L | XL | XXL |
|----|-----------------|---|---|---|----|-----|
| A. | BLACK MULTI | | | | | |
| B. | DARK TEAL MULTI | | | | | |

PEARL CLASSIC MOCK ZIP LS

- Custom box fit
- Long sleeve mock neck zip tee with contrast band down sleeve and tonal rib cuffs. Features a heavyweight jersey fabrication, hidden zipper placket and contrast embroidery
- Fair trade factory certified
- 100% Cotton



A.



B.

| | COLOR | S | M | L | XL | XXL |
|----|---------------------|---|---|---|----|-----|
| A. | PICANTE / YELLOW | | | | | |
| B. | LEGION BLUE / KHAKI | | | | | |

GIMME CLASSIC POLO LS

- Custom box fit
- Long sleeve zip polo with contrast collar. Features a heavyweight leopard print jersey fabrication, exposed zipper placket and embroidery logo at chest
- Fair trade factory certified
- 100% Cotton



A.



B.

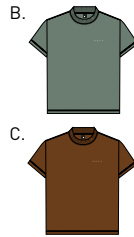
| | COLOR | S | M | L | XL | XXL |
|----|---------------|---|---|---|----|-----|
| A. | TEAL LEOPARD | | | | | |
| B. | KHAKI LEOPARD | | | | | |

KNITS

NOVEL OBEY MOCK NECK SS

167151578

- Custom classic box fit
- Short sleeve jersey mock neck tee with solid rib trims. Features a heavyweight carded jersey fabrication, OBEY original screen print at chest
- Made in USA
- 100% Cotton



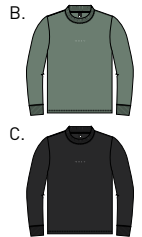
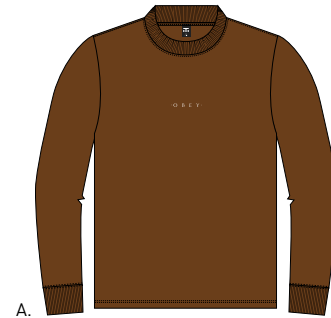
A.

| | COLOR | S | M | L | XL | XXL |
|----|----------------|---|---|---|----|-----|
| A. | OFF BLACK | | | | | |
| B. | ATLANTIC GREEN | | | | | |
| C. | LT. BROWN | | | | | |

NOVEL OBEY MOCK NECK LS

167161578

- Custom classic box fit
- Long sleeve jersey mock neck tee with solid rib trims. Features a heavyweight carded jersey fabrication, OBEY original screen print at chest
- Made in USA
- 100% Cotton



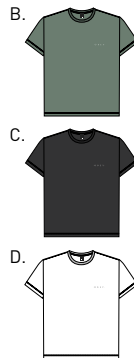
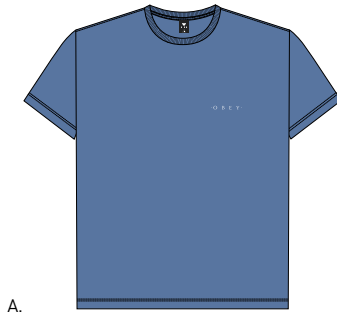
A.

| | COLOR | S | M | L | XL | XXL |
|----|----------------|---|---|---|----|-----|
| A. | LT. BROWN | | | | | |
| B. | ATLANTIC GREEN | | | | | |
| C. | OFF BLACK | | | | | |

NOVEL OBEY 3 HEAVYWEIGHT CLASSIC CUSTOM TEE

166911838

- Custom classic box fit
- Short sleeve jersey tee with solid rib trims. Features a heavyweight carded jersey fabrication, OBEY original screen print at chest
- Made in USA
- 100% Cotton



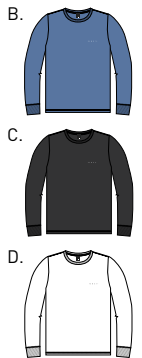
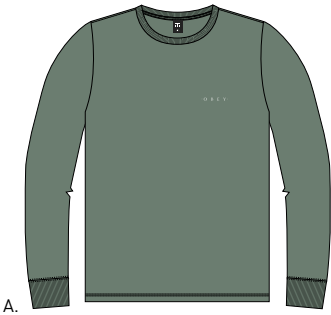
A.

| | COLOR | S | M | L | XL | XXL |
|----|----------------|---|---|---|----|-----|
| A. | BLUE MOON | | | | | |
| B. | ATLANTIC GREEN | | | | | |
| C. | OFF BLACK | | | | | |
| D. | WHITE | | | | | |

NOVEL OBEY 3 HEAVYWEIGHT BOX LS

167101838

- Custom classic box fit
- Long sleeve jersey tee with solid rib trims. Features a heavyweight carded jersey fabrication, OBEY original screen print at chest
- Made in USA
- 100% Cotton



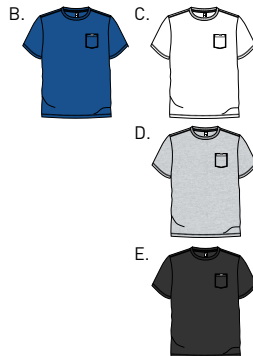
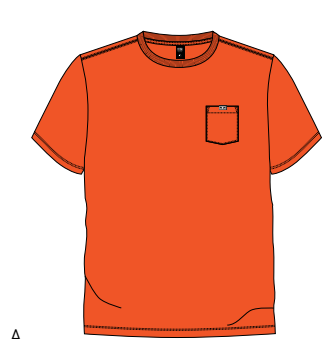
A.

| | COLOR | S | M | L | XL | XXL |
|----|----------------|---|---|---|----|-----|
| A. | ATLANTIC GREEN | | | | | |
| B. | BLUE MOON | | | | | |
| C. | OFF BLACK | | | | | |
| D. | WHITE | | | | | |

ALL EYEZ TEE SS

131080225

- Regular fit
- Short sleeve crew neck tee with solid rib trims. Features a solid jersey fabrication with a chest pocket and an eyes logo clip label
- Solid : 100% Cotton; Heather Grey 90% Cotton / 10% Polyester



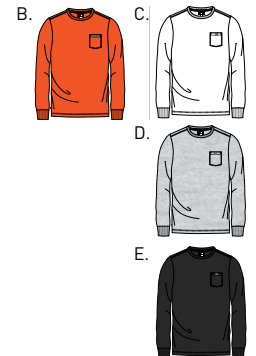
A.

| | COLOR | S | M | L | XL | XXL |
|----|--------------|---|---|---|----|-----|
| A. | ORANGE | | | | | |
| B. | BLUE | | | | | |
| C. | WHITE | | | | | |
| D. | HEATHER GREY | | | | | |
| E. | BLACK | | | | | |

ALL EYEZ TEE LS

131030077

- Regular fit
- Short sleeve crew neck tee with solid rib trims. Features a solid jersey fabrication with a chest pocket and an eyes logo clip label
- Solid : 100% Cotton; Heather Grey 90% Cotton / 10% Polyester



A.

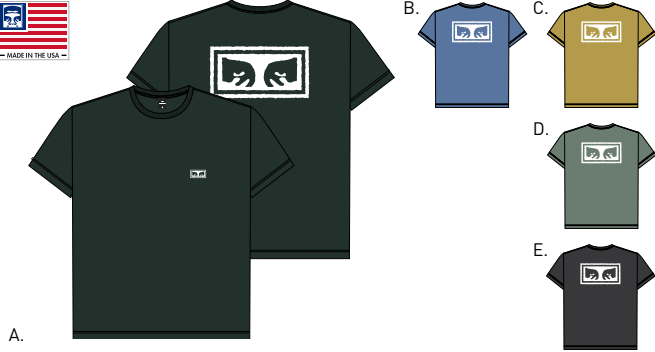
| | COLOR | S | M | L | XL | XXL |
|----|--------------|---|---|---|----|-----|
| A. | SAFETY GREEN | | | | | |
| B. | ORANGE | | | | | |
| C. | WHITE | | | | | |
| D. | HEATHER GREY | | | | | |
| E. | BLACK | | | | | |

KNITS

OBEY EYES 3 HEAVYWEIGHT BOX TEE

166911826

- Custom classic box fit
- Short sleeve jersey tee with solid rib trims. Features a heavyweight carded jersey fabrication, OBEY original screen print at chest and back
- Made in USA
- 100% Cotton

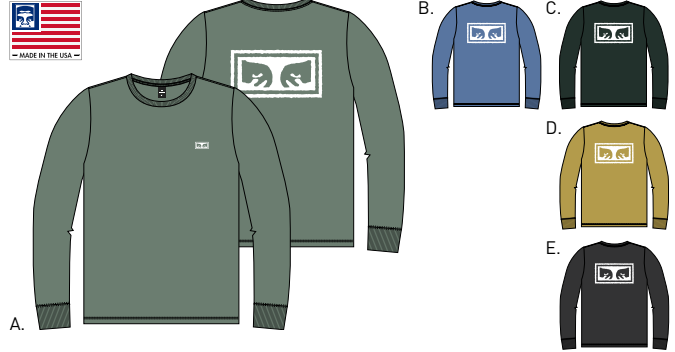


| | COLOR | S | M | L | XL | XXL |
|----|----------------|---|---|---|----|-----|
| A. | FOREST PINE | | | | | |
| B. | BLUE MOON | | | | | |
| C. | DIJON | | | | | |
| D. | ATLANTIC GREEN | | | | | |
| E. | OFF BLACK | | | | | |

OBEY EYES 3 HEAVYWEIGHT BOX LS

167101826

- Custom classic box fit
- Long sleeve jersey tee with solid rib trims. Features a heavyweight carded jersey fabrication, OBEY original screen print at chest and back
- Made in USA
- 100% Cotton

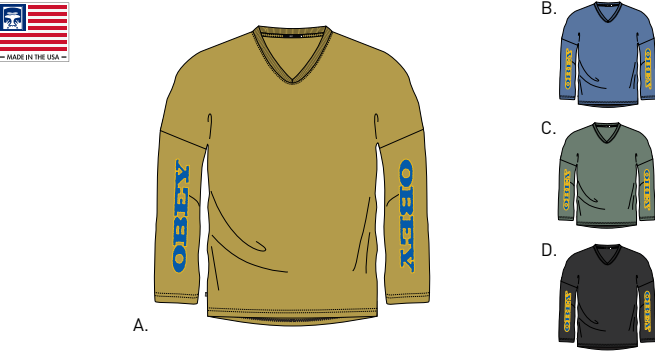


| | COLOR | S | M | L | XL | XXL |
|----|----------------|---|---|---|----|-----|
| A. | ATLANTIC GREEN | | | | | |
| B. | BLUE MOON | | | | | |
| C. | FOREST PINE | | | | | |
| D. | DIJON | | | | | |
| E. | OFF BLACK | | | | | |

MORE OF US HEAVYWEIGHT HOCKEY JERSEY

136881860

- Custom classic box fit
- Long sleeve hockey jersey tee with solid rib trims. Features a heavyweight carded jersey fabrication, OBEY original screen print along sleeves
- Made in USA
- 100% Cotton



| | COLOR | S | M | L | XL | XXL |
|----|----------------|---|---|---|----|-----|
| A. | DIJON | | | | | |
| B. | BLUE MOON | | | | | |
| C. | ATLANTIC GREEN | | | | | |
| D. | OFF BLACK | | | | | |

STRONG MINDS HEAVYWEIGHT HOCKEY JERSEY

136881847

- Custom classic box fit
- Long sleeve hockey jersey tee with solid rib trims. Features a heavyweight carded jersey fabrication, OBEY original screen prints at chest, back and along sleeves
- Made in USA
- 100% Cotton

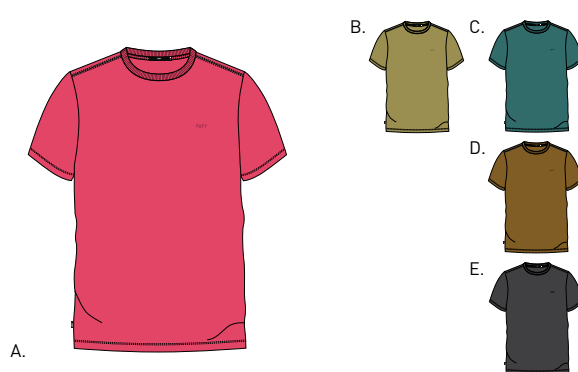


| | COLOR | S | M | L | XL | XXL |
|----|----------------|---|---|---|----|-----|
| A. | OFF BLACK | | | | | |
| B. | DIJON | | | | | |
| C. | BLUE MOON | | | | | |
| D. | ATLANTIC GREEN | | | | | |

JUMBLE PIGMENT TEE SS

131080186

- Regular fit
- Short sleeve crew neck tee with solid rib trims. Features a pigment-dyed jersey fabrication and tonal embroidery at chest
- 100% Cotton



| | COLOR | S | M | L | XL | XXL |
|----|----------------|---|---|---|----|-----|
| A. | DUSTY HOT PINK | | | | | |
| B. | DUSTY WILLOW | | | | | |
| C. | DUSTY AQUA | | | | | |
| D. | DUSTY TAPENADE | | | | | |
| E. | BLACK | | | | | |



PANTS



142020123 STRAGGLER PLAID CARPENTER PANT

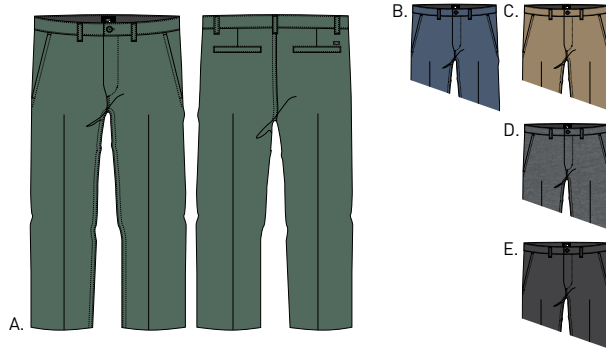
STRAGGLER SLIM FIT



STRAGGLER FLOODED PANT

142020113

- Slim straight fit with flooded inseam length
- Timeless work pant. Features zipper fly closure, slash front pockets, single welt back pockets, and woven label at back right pocket
- 60% Cotton / 39% Polyester / 1% Spandex

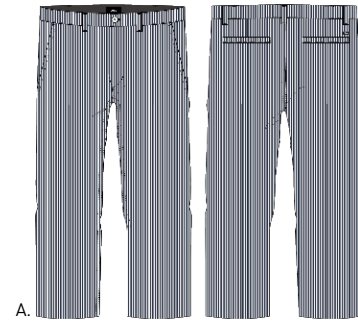


| | COLOR | 26 | 28 | 30 | 31 | 32 | 33 | 34 | 36 | 38 |
|----|--------------|----|----|----|----|----|----|----|----|----|
| A. | DUSTY GREEN | | | | | | | | | |
| B. | DULL BLUE | | | | | | | | | |
| C. | KHAKI | | | | | | | | | |
| D. | HEATHER GREY | | | | | | | | | |
| E. | BLACK | | | | | | | | | |

STRAGGLER STRIPE FLOODED PANT

142020115

- Slim straight fit with flooded inseam length
- Timeless work pant. Features zipper fly closure, slash front pockets, single welt back pockets, and woven label at back right pocket.
- 60% Cotton / 39% Polyester / 1% Spandex



| | COLOR | 26 | 28 | 30 | 31 | 32 | 33 | 34 | 36 | 38 |
|----|------------|----|----|----|----|----|----|----|----|----|
| A. | NAVY MULTI | | | | | | | | | |

STRAGGLER HOUNDSTOOTH FLOODED PANT

142020114

- Slim straight fit with flooded inseam length
- Timeless work pant. Features zipper fly closure, slash front pockets, single welt back pockets, and woven label at back right pocket
- 60% Cotton / 39% Polyester / 1% Spandex



| | COLOR | 26 | 28 | 30 | 31 | 32 | 33 | 34 | 36 | 38 |
|----|-------------|----|----|----|----|----|----|----|----|----|
| A. | KHAKI MULTI | | | | | | | | | |
| B. | WHITE MULTI | | | | | | | | | |

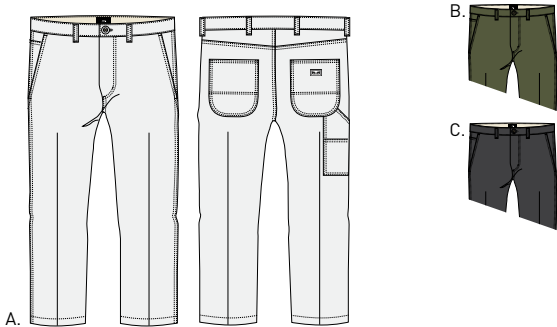
STRAGGLER CARPENTER
SLIM FIT



STRAGGLER CARPENTER PANT III

142020116

- Slim straight fit with flooded inseam length
- Classic carpenter pant. Features zipper fly and logo shank button closure, slash front pockets with coin pocket, patch back pockets, carpenter pocket details and woven label at back right pocket
- 100% Cotton



| | COLOR | 26 | 28 | 30 | 31 | 32 | 33 | 34 | 36 | 38 |
|----|-------|----|----|----|----|----|----|----|----|----|
| A. | WHITE | | | | | | | | | |
| B. | ARMY | | | | | | | | | |
| C. | BLACK | | | | | | | | | |

STRAGGLER PLAID CARPENTER PANT

142020123

- Slim straight fit with flooded inseam length
- Classic carpenter pant. Features zipper fly and logo shank button closure, slash front pockets with coin pocket, patch back pockets, carpenter pocket details and woven label at back right pocket
- 60% Cotton / 40% Polyester



| | COLOR | 26 | 28 | 30 | 31 | 32 | 33 | 34 | 36 | 38 |
|----|-------------|----|----|----|----|----|----|----|----|----|
| A. | BLACK MULTI | | | | | | | | | |

RECON
STANDARD FIT



RECON CARGO PANT

142020097

- Slim straight fit
- Classic military-inspired cargo pant. Features adjustable waistband pull tabs, zipper fly closure, slash front pockets, single welt back pockets with flaps, cargo pockets, and logo mil spec screenprint at right cargo pocket
- 100% Cotton



| | COLOR | 28 | 30 | 31 | 32 | 33 | 34 | 36 | 38 |
|----|------------|----|----|----|----|----|----|----|----|
| A. | TIGER CAMO | | | | | | | | |
| B. | FIELD CAMO | | | | | | | | |
| C. | BLACK | | | | | | | | |
| D. | ARMY | | | | | | | | |

TRAVELER RELAXED FIT

- SITS BELOW WAIST
- RELAXED SEAT AND THIGH
- SLIGHT TAPERED LEG
- REGULAR INSEAM
- 14 1/2" LEG OPENING



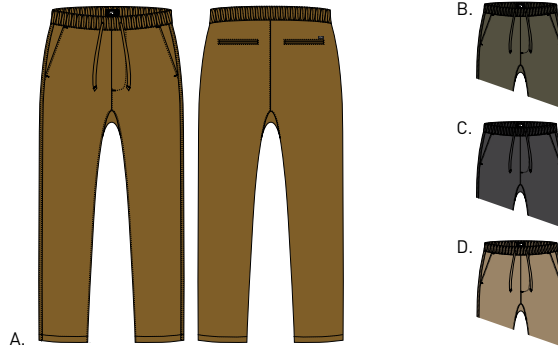
RELAXED TAPERED LEG

14 1/2" LEG OPENING

TRAVELER SLUB TWILL PANT II

142020087

- Relaxed fit
- Timeless utility pant with elastic waistband and woven drawcord. Features slash front pockets, double welt back pockets, functional crotch gusset, and woven label at back right pocket
- 100% Cotton



| A. | COLOR | S | M | L | XL | XXL |
|----|----------|---|---|---|----|-----|
| A. | TAPENADE | | | | | |
| B. | ARMY | | | | | |
| C. | BLACK | | | | | |
| D. | KHAKI | | | | | |



PANTS FIT GUIDE

STRAGGLER PANT

- SITS BELOW WAIST
- SLIM SEAT AND THIGH
- SLIGHT TAPERED LEG
- FLOODED INSEAM
- 15" LEG OPENING

SLIM FIT



STRAGGLER CARPENTER PANT

- SITS BELOW WAIST
- SLIM SEAT AND THIGH
- SLIGHT TAPERED LEG
- FLOODED INSEAM
- 15" LEG OPENING

SLIM FIT



HARD WORK PANT

- SITS AT WAIST
- CLASSIC SEAT AND THIGH
- CLASSIC STRAIGHT LEG
- REGULAR INSEAM
- 16.5" LEG OPENING

CLASSIC FIT



PANTS FIT GUIDE

RECON PANT

- SITS AT WAIST
- REGULAR SEAT AND THIGH
- REGULAR STRAIGHT LEG
- REGULAR INSEAM
- 15 1/2" LEG OPENING

STANDARD FIT



TRAVELER PANT

- SITS BELOW WAIST
- RELAXED SEAT AND THIGH
- SLIGHT TAPERED LEG
- REGULAR INSEAM
- 14 1/2" LEG OPENING

RELAXED FIT



EASY PANT

- SITS BELOW WAIST
- RELAXED SEAT AND THIGH
- SLIGHT TAPERED LEG
- REGULAR INSEAM
- 15" LEG OPENING

RELAXED FIT



HEADWEAR

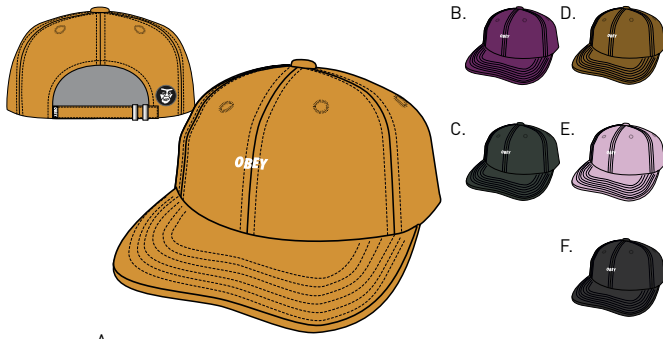


HEADWEAR

JUMBLE BAR III 6 PANEL HAT

100580071

- Unstructured 6 panel strapback hat
- Classic "dad hat" with curved visor, direct logo embroidery, and self fabric strap closure.
- 100% Cotton



A.

| COLOR | O/S | COLOR | O/S |
|----------------|-----|----------------|-----|
| A. HONEY GOLD | | D. TAPENADE | |
| B. PLUM | | E. PALE PURPLE | |
| C. DARK FOREST | | F. BLACK | |

DAYTON 6 PANEL HAT

100580163

- Unstructured 6 panel strapback hat
- Yarn-dyed plaid hat with low profile crown height, curved visor, direct logo embroidery and self fabric strap closure
- 100% Cotton



A.

| COLOR | O/S |
|--------------|-----|
| A. RED MULTI | |

CUTTY 6 PANEL SNAPBACK

100580074

- Unstructured 6 panel snapback hat
- Brushed twill hat with mid profile crown height, curved visor, direct logo embroidery, and plastic snap closure
- 100% Cotton



A.

| COLOR | O/S | COLOR | O/S |
|----------------|-----|----------|-----|
| A. DARK TEAL | | C. BLUE | |
| B. WHEAT BROWN | | D. BLACK | |

REMAIN 6 PANEL HAT

100580164

- Unstructured 6 panel snapback hat
- Mid profile crown height, curved visor, direct logo embroidery, and plastic snap closure
- 100% Cotton



A.

| COLOR | O/S | COLOR | O/S |
|----------|-----|---------|-----|
| A. BLACK | | B. PINE | |

AMPLIFIER 6 PANEL SNAPBACK

100580151

- Unstructured 6 panel snapback hat
- Mid profile crown height, curved visor, direct logo embroidery, and plastic snap closure
- 100% Cotton



A.

| COLOR | O/S | COLOR | O/S |
|-----------|-----|----------|-----|
| A. BLUE | | C. BLACK | |
| B. FOREST | | | |

BLACKBOOK 6 PANEL SNAPBACK

100580153

- Unstructured 6 panel snapback hat
- Mid profile crown height, curved visor, direct logo embroidery, and plastic snap closure
- 100% Cotton



A.

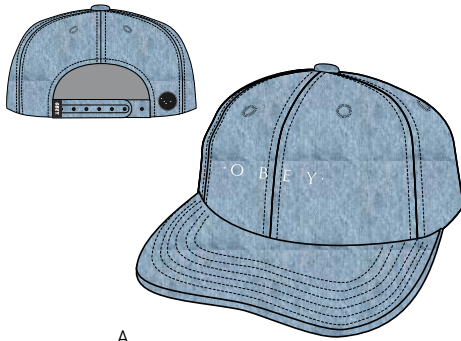
| COLOR | O/S | COLOR | O/S |
|----------|-----|-----------|-----|
| A. BLACK | | B. FOREST | |

HEADWEAR

INTENTION 6 PANEL SNAPBACK

100580150

- Unstructured 6 panel snapback hat
- Mid profile crown height, curved visor, direct logo embroidery, and plastic snap closure
- 100% Cotton



| COLOR | | O/S | |
|-------|-------------|-----|--|
| A. | LIGHT DENIM | | |
| B. | BLACK | | |

BORREGO 6 PANEL SNAPBACK

100580154

- Unstructured 6 panel snapback hat
- Mid profile crown height, curved visor, direct logo embroidery, and plastic snap closure.
- 100% Cotton



| COLOR | | O/S | |
|-------|-----------|-----|--|
| A. | DARK TEAL | | |
| B. | BLACK | | |

INTERNATIONAL 6 PANEL SNAPBACK

100580160

- Unstructured 6 panel snapback hat
- Brushed twill hat with mid profile crown height, curved visor, direct logo embroidery, and plastic snap closure
- 100% Cotton



| COLOR | | O/S | |
|-------|-------|-----|--|
| A. | BLACK | | |
| B. | KHAKI | | |

90'S JUMBLE BAR 6 PANEL SNAPBACK

100580076

- Unstructured 6 panel snapback hat
- Brushed twill hat with mid profile crown height, curved visor, direct logo embroidery, and plastic snap closure
- 100% Cotton



| COLOR | | O/S | |
|-------|--------------------|-----|--|
| A. | PALE KHAKI / BLACK | | |
| B. | MINT / BLACK | | |
| C. | BONE BROWN / BLACK | | |
| D. | DARK TEAL / BLACK | | |
| E. | PICANTE / BLACK | | |

CULVER 6 PANEL SNAPBACK

100580156

- Unstructured 6 panel snapback hat
- Pigment dyed hat with mid profile crown height, flat visor, eyes logo woven label patch and plastic snap closure
- 100% Cotton

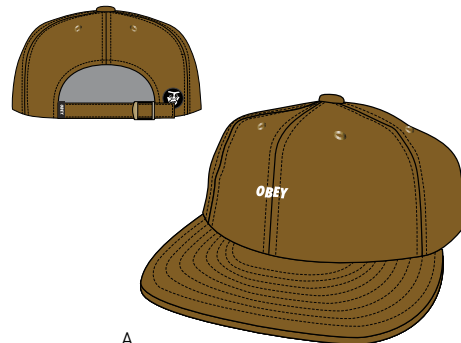


| COLOR | | O/S | |
|-------|-----------|-----|--|
| A. | BLACK | | |
| B. | DARK TEAL | | |
| C. | NAVY | | |

HADLEY 6 PANEL STRAPBACK

100580158

- Unstructured 6 panel strapback hat
- Pigment-dyed hat with mid profile crown height, flat visor, metal eyelets, direct logo embroidery and self fabric strap closure
- 100% Cotton



| COLOR | | O/S | |
|-------|----------|-----|--|
| A. | TAPENADE | | |
| B. | BLACK | | |
| C. | ARMY | | |

HEADWEAR

HIGHLAND STRAPBACK

100570086

- Unstructured 6 panel strapback hat
- Mid profile crown height, flat visor, metal eyelets, direct logo embroidery and self fabric strap closure
- 100% Cotton



| COLOR | | O/S | COLOR | | O/S |
|-------|------|-----|-------|-------|-----|
| A. | MINT | | B. | BLACK | |

INTERNATIONAL STRAPBACK

100570081

- Unstructured 5 panel strapback hat
- Classic profile crown height with curved visor, direct logo embroidery, and self fabric strap closure
- 100% Cotton



| COLOR | | O/S | COLOR | | O/S |
|-------|-------|-----|-------|------|-----|
| A. | KHAKI | | C. | NAVY | |
| B. | BLACK | | | | |

RHYTHM STRAPBACK

100570082

- Unstructured 5 panel strapback hat
- Classic profile crown height with curved visor, direct logo embroidery and self fabric strap closure
- 100% Cotton



| COLOR | | O/S | COLOR | | O/S |
|-------|-------|-----|-------|-----------|-----|
| A. | BLACK | | B. | DARK TEAL | |

SEARCHING SNAPBACK

100570084

- Unstructured 5 panel snapback hat
- Classic profile crown height with flat visor, direct logo embroidery, and plastic snap closure
- 100% Nylon



| COLOR | | O/S | COLOR | | O/S |
|-------|----------|-----|-------|-------|-----|
| A. | TAPENADE | | B. | BLACK | |

DOWNBEAT SNAPBACK

100570085

- Unstructured 5 panel snapback hat
- Classic profile crown height with flat visor, direct logo embroidery, and plastic snap closure
- 100% Nylon



| COLOR | | O/S | COLOR | | O/S |
|-------|------|-----|-------|-------|-----|
| A. | PINE | | B. | BLACK | |

ESTABLISHED 89 SNAPBACK II

100570051

- Unstructured 5 panel snapback hat
- Classic profile crown height with flat visor, embroidered patch, and plastic snap closure
- 100% Cotton



| COLOR | | O/S | COLOR | | O/S |
|-------|------|-----|-------|-------|-----|
| A. | NAVY | | B. | BLACK | |

HEADWEAR

JUMBLE BAR II 5 PANEL HAT

- Classic fit 5 panel camp hat
- Flat visor, direct logo embroidery and webbing strap closure
- 100% Cotton

100490049

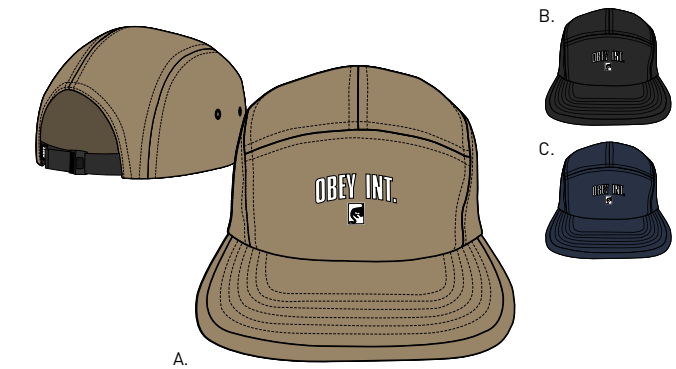
INTERNATIONAL 5 PANEL HAT

- Classic fit 5 panel camp hat
- Flat visor, screenprinted logo, and webbing strap closure
- 100% Cotton

100490050



| | COLOR | O/S | | COLOR | O/S |
|----|------------|-----|----|-------|-----|
| A. | PINE | | C. | BLACK | |
| B. | DARK KHAKI | | | | |



| | COLOR | O/S | | COLOR | O/S |
|----|-------|-----|----|-------|-----|
| A. | KHAKI | | C. | NAVY | |
| B. | BLACK | | | | |

DECADES BUCKET HAT

- Classic fit, bell shape six panel bucket hat
- Pigment-dyed bucket hat with two piece visor and direct logo embroidery at side panel of hat
- 100% Cotton

100520013

INTERNATIONAL BUCKET HAT

- Classic fit 3 panel bucket hat
- Flat two piece visor and screenprinted logo
- 100% Cotton

100520015



| | COLOR | O/S | | COLOR | O/S |
|----|----------|-----|----|-----------|-----|
| A. | BLACK | | C. | DARK TEAL | |
| B. | TAPENADE | | | | |

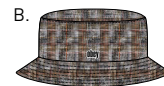


| | COLOR | O/S | | COLOR | O/S |
|----|-------|-----|----|-------|-----|
| A. | NAVY | | C. | BLACK | |
| B. | KHAKI | | | | |

DAYTON BUCKET HAT

- Classic fit three panel bucket hat
- Flat two piece visor and direct logo embroidery embellishment at front panel of hat
- 100% Cotton

100520016



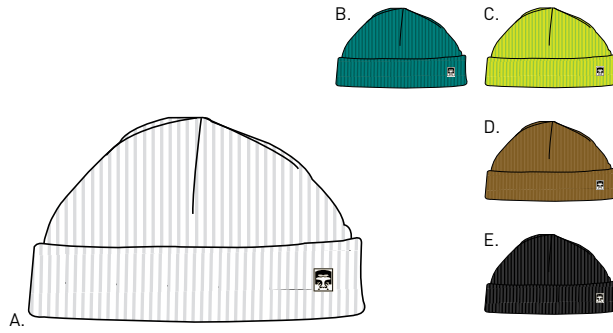
| | COLOR | O/S | | COLOR | O/S |
|----|-----------|-----|----|-------------|-----|
| A. | RED MULTI | | B. | KHAKI MULTI | |

HEADWEAR

MICRO BEANIE

- Extra shallow height cuffed beanie
- Features rib knit construction with removable logo enamel pin
- 100% Acrylic

100030125



| | COLOR | O/S |
|----|--------------|-----|
| A. | WHITE | |
| B. | TEAL | |
| C. | BRIGHT GREEN | |

| | COLOR | O/S |
|----|----------|-----|
| D. | TAPENADE | |
| E. | BLACK | |

JUNGLE BEANIE

- Medium height cuffed beanie
- Features rib knit construction with direct logo embroidery
- 100% Acrylic

100030139



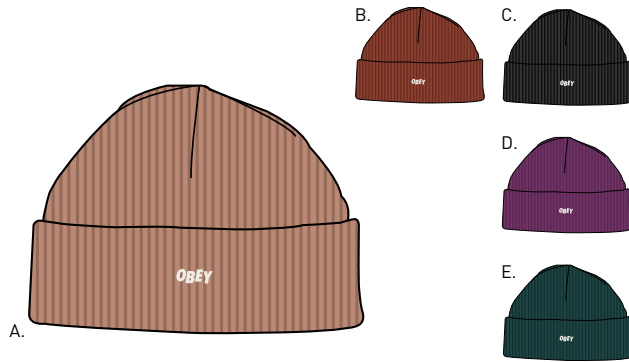
| | COLOR | O/S |
|----|-----------|-----|
| A. | ORANGE | |
| B. | PLUM | |
| C. | DARK TEAL | |

| | COLOR | O/S |
|----|--------------|-----|
| D. | DUSTY YELLOW | |
| E. | BLACK | |

HANGMAN BEANIE

- Extra shallow height cuffed beanie
- Features rib knit construction and direct logo embroidery
- 100% Acrylic

100030102



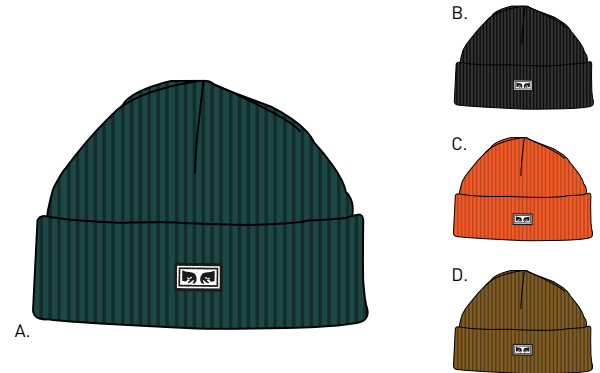
| | COLOR | O/S |
|----|---------|-----|
| A. | MAUVE | |
| B. | PICANTE | |
| C. | BLACK | |

| | COLOR | O/S |
|----|-----------|-----|
| D. | PLUM | |
| E. | DARK PINE | |

SUBVERSION BEANIE

- Shallow height cuffed beanie
- Features rib knit construction and logo woven label patch
- 100% Acrylic

100030118



| | COLOR | O/S |
|----|-----------|-----|
| A. | DARK PINE | |
| B. | BLACK | |

| | COLOR | O/S |
|----|----------|-----|
| C. | ORANGE | |
| D. | TAPENADE | |

CHURCHILL BEANIE

- Medium height cuffed beanie
- Features heavyweight rib knit construction and logo woven label patch
- 100% Acrylic

100030120



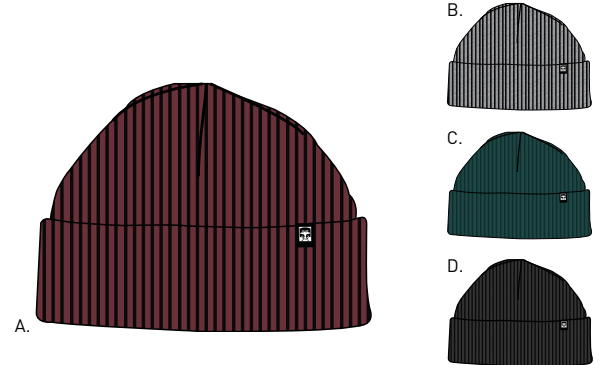
| | COLOR | O/S |
|----|-------|-----|
| A. | BLACK | |

| | COLOR | O/S |
|----|------------|-----|
| B. | DUSTY ROSE | |

RUGER 89 BEANIE

- Medium height cuffed beanie
- Features shaker knit construction and logo woven clip label
- 100% Acrylic

100030086



| | COLOR | O/S |
|----|--------------|-----|
| A. | BURGUNDY | |
| B. | HEATHER GREY | |

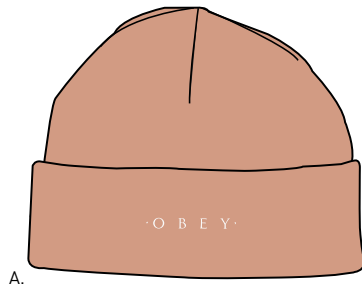
| | COLOR | O/S |
|----|-----------|-----|
| C. | DARK PINE | |
| D. | BLACK | |

HEADWEAR

UNION BEANIE

- Medium height cuffed beanie
- Features jersey knit construction with direct logo embroidery.
- 100% Acrylic

100030131



| | COLOR | O/S |
|----|-------------|-----|
| A. | DUSTY CORAL | |
| B. | BLACK | |

| | COLOR | O/S |
|----|----------|-----|
| C. | PINE | |
| D. | TAPENADE | |

REMAIN BEANIE

- Tall height cuffed beanie
- Features jersey knit construction with direct logo embroidery
- 100% Acrylic

100030141



| | COLOR | O/S |
|----|-------|-----|
| A. | BLACK | |

| | COLOR | O/S |
|----|-------|-----|
| B. | PINE | |

ICON EYES BEANIE

- Tall height cuffed beanie
- Features jersey knit construction with logo woven label patch
- 100% Acrylic

100030132



| | COLOR | O/S |
|----|-----------|-----|
| A. | TAPENADE | |
| B. | DARK TEAL | |
| C. | PICANTE | |

| | COLOR | O/S |
|----|--------------|-----|
| D. | BLACK | |
| E. | MAGENTA | |
| F. | SAFETY GREEN | |

STUDY BEANIE

- Tall height cuffed beanie
- Features custom jacquard knit construction with logo woven label patch
- 100% Acrylic

100030140



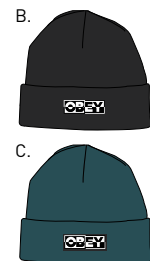
| | COLOR | O/S |
|----|-----------|-----|
| A. | CHECKER | |
| B. | DRIP CAMO | |

| | COLOR | O/S |
|----|------------|-----|
| C. | FIELD CAMO | |

DOWNBEAT BEANIE

- Tall height cuffed beanie
- Features jersey knit construction with logo woven label patch
- 100% Acrylic

100030142



| | COLOR | O/S |
|----|--------|-----|
| A. | YELLOW | |
| B. | BLACK | |

| | COLOR | O/S |
|----|-------|-----|
| C. | PINE | |

INTERNATIONAL BEANIE

- Tall height cuffed beanie
- Features jersey knit construction with direct logo embroidery
- 100% Acrylic

100030134



| | COLOR | O/S |
|----|-----------|-----|
| A. | DARK TEAL | |
| B. | NAVY | |

| | COLOR | O/S |
|----|-------|-----|
| C. | BLACK | |

HEADWEAR

BORREGO BEANIE

- Tall height cuffed beanie
- Features jersey knit construction with direct logo embroidery
- 100% Acrylic

100030135



| | COLOR | O/S |
|----|----------|-----|
| A. | TAPENADE | |
| B. | BLUE | |
| C. | PINE | |

| | COLOR | O/S |
|----|--------|-----|
| D. | ORANGE | |
| E. | BLACK | |

MEMORIES BEANIE

- Tall height cuffed beanie
- Features jersey knit construction with direct logo embroidery
- 100% Acrylic

100030136



| | COLOR | O/S |
|----|-----------|-----|
| A. | PLUM | |
| B. | DARK TEAL | |
| C. | BLACK | |

| | COLOR | O/S |
|----|----------|-----|
| D. | TAPENADE | |
| E. | BLUE | |

HIGHLAND BEANIE

- Tall height cuffed beanie
- Features jersey knit construction with direct logo embroidery
- 100% Acrylic

100030137



| | COLOR | O/S |
|----|----------|-----|
| A. | BLUE | |
| B. | TAPENADE | |
| C. | BLACK | |

| | COLOR | O/S |
|----|--------------|-----|
| D. | SAFETY GREEN | |
| E. | PLUM | |

HIGHLAND STRIPE BEANIE

- Tall height cuffed beanie
- Features yarn-dyed stripe jersey knit construction with direct logo embroidery
- 100% Acrylic

100030138



| | COLOR | O/S |
|----|---------------|-----|
| A. | PICANTE MULTI | |

| | COLOR | O/S |
|----|-----------------|-----|
| B. | DARK TEAL MULTI | |

LEATHER ACCESSORIES



LEATHER ACCESSORIES

VANDAL BI FOLD WALLET

- Bi-fold wallet with multiple card holder and bill insert pocket
- OBEY gold foil branding and OBEY original gold rivet
- 100% Genuine Leather

100310088



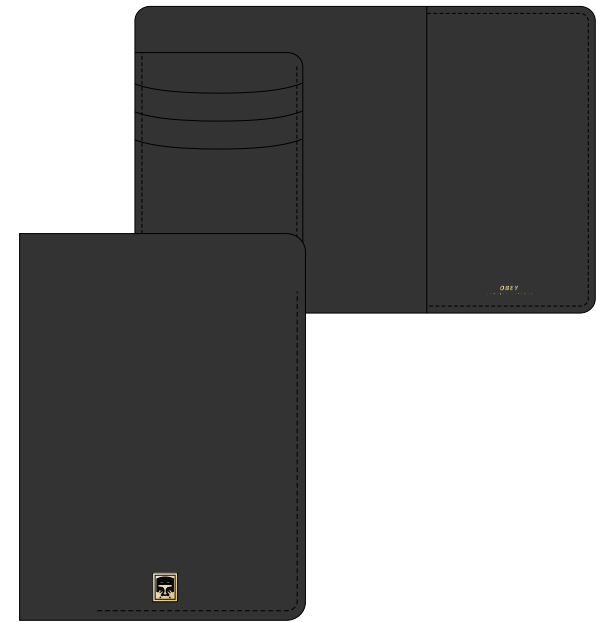
A.

| COLOR | | O/S | | |
|-------|-------|-----|--|--|
| A. | BLACK | | | |

VANDAL PASSPORT WALLET

- Passport wallet with multiple card holder and large insert pockets for passport and boarding pass
- OBEY gold foil branding and OBEY original gold rivet
- 100% Genuine Leather

100310089



A.

| COLOR | | O/S | | |
|-------|-------|-----|--|--|
| A. | BLACK | | | |

VANDAL ID WALLET

- ID wallet with multiple card holder
- OBEY original gold rivet branding
- 100% Genuine Leather

100310087



A.

| COLOR | | O/S | | |
|-------|-------|-----|--|--|
| A. | BLACK | | | |

VANDAL LEATHER BELT

- Leather belt with antique brass hardware
- OBEY original gold rivet branding and interior gold foil logo
- 100% Genuine Leather

10050025



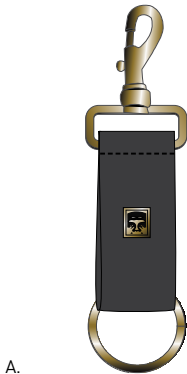
A.

| COLOR | | S | M | L |
|-------|-------|---|---|---|
| A. | BLACK | | | |

VANDAL LEATHER KEY CHAIN

- Key chain with gold finish hardware
- OBEY original gold rivet branding
- 100% Genuine Leather

100160015



A.

| COLOR | | O/S | | |
|-------|-------|-----|--|--|
| A. | BLACK | | | |

FUAX LEATHER ACCESSORIES

GENTRY II ZIP AROUND WALLET

- Faux leather zip around wallet with multiple card and bills inserts
- Interior and exterior OBEY gold foil logo and shiny nickel hardware
- 100% Polyurethane

100310090

GENTRY BI FOLD WALLET

- Faux leather bi-fold wallet with clear plastic ID window and multiple card inserts
- Interior and exterior OBEY gold foil logo
- 100% Polyurethane

100310070



A.



A.

| COLOR | | O/S | | |
|-------|-------|-----|--|--|
| A. | BLACK | | | |

| COLOR | | O/S | | |
|-------|-------|-----|--|--|
| A. | BLACK | | | |

GENTRY ID WALLET

- Faux leather ID wallet with multiple card inserts and bills insert center pocket
- Exterior OBEY gold foil logo
- 100% Polyurethane

100310071



A.

| COLOR | | O/S | | |
|-------|-------|-----|--|--|
| A. | BLACK | | | |



BAGS & ACCESSORIES



BAGS & ACCESSORIES

DROP OUT JUVEE BACKPACK

100010096

- Backpack with logo emboried patch, zipper front pocket, internal laptop sleeve, large main compartment, padded shoulder straps for comfort, and chrome finished hardware and zipper pulls
- 17" tall
- 100% Polyester



| | COLOR | O/S | | COLOR | O/S |
|----|-----------|-----|----|-------|-----|
| A. | CHECKER | | C. | TEAL | |
| B. | DRIP CAMO | | D. | BLACK | |

DROP OUT DAY PACK

100010099

- Backpack with logo emboried patch, zipper front pocket, internal laptop sleeve, large main compartment, padded shoulder straps for comfort, utility bottom loop, and chrome finished hardware and zipper pulls
- 18 1/2" tall with full doubled slider zipper for full access
- 100% Polyester



| | COLOR | O/S | | COLOR | O/S |
|----|-----------|-----|----|-------|-----|
| A. | DRIP CAMO | | C. | TEAL | |
| B. | CHECKER | | D. | BLACK | |

DROP OUT WEEKENDER DUFFLE

100010092

- Large tote bag with webbing straps
- Features a zipper top closure with exterior pocket with black coil zipper and chrome zipper pull, black hardware and an logo emboried patch
- 17" X 27" X 6"
- 100% Polyester



| | COLOR | O/S | | COLOR | O/S |
|----|-----------|-----|----|---------|-----|
| A. | TEAL | | C. | CHECKER | |
| B. | DRIP CAMO | | D. | BLACK | |

DROP OUT TRAVELLER BAG

100010094

- Small essential bag with multiple pockets and adjustable shoulder strap
- Features a double compartment at center with zip closures and outside pockets with logo emboried patch
- 6.5" tall
- 100% Polyester



| | COLOR | O/S | | COLOR | O/S |
|----|---------|-----|----|-----------|-----|
| A. | BLACK | | C. | DRIP CAMO | |
| B. | CHECKER | | D. | TEAL | |

DROP OUT SLING BAG

100010093

- Sling bag with logo emboried patch, multiple pockets and a sturdy plastic closure, adjustable webbing strap to wear comfortably over the shoulders or waist, and chrome finished hardware with black coil zipper
- 18" wide
- 100% Polyester



| | COLOR | O/S | | COLOR | O/S |
|----|-----------|-----|----|-------|-----|
| A. | DRIP CAMO | | C. | TEAL | |
| B. | CHECKER | | D. | BLACK | |

DROP OUT UTILITY SMALL BAG

100010095

- Small urban utility bag with carabiner clip hook
- Features one compartment zip pocket and front velcro closure pocket with logo laser engraved carabiner clip, a belt loop at back for multiple usage and logo emboried patch
- 5" tall
- 100% Polyester



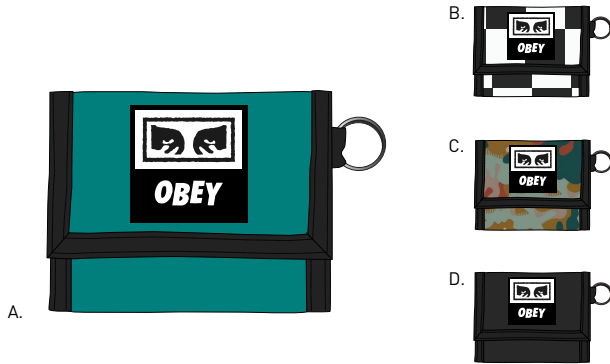
| | COLOR | O/S | | COLOR | O/S |
|----|-----------|-----|----|-------|-----|
| A. | CHECKER | | C. | TEAL | |
| B. | DRIP CAMO | | D. | BLACK | |

BAGS & ACCESSORIES

DROP OUT TRI-FOLD WALLET

100310099

- Tri-fold wallet with multiple card slots, clear ID window, a logo emboried patch, and chrome key ring and black grosgrain edging
- 100% Polyester

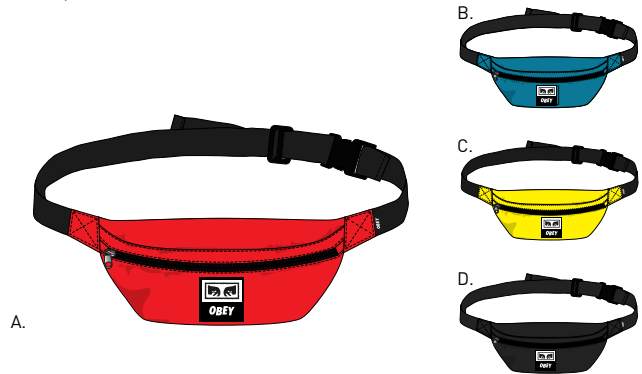


| | COLOR | O/S | | COLOR | O/S |
|----|---------|-----|----|-----------|-----|
| A. | TEAL | | C. | DRIP CAMO | |
| B. | CHECKER | | D. | BLACK | |

DAILY SLING BAG

100010100

- Features a logo emboried patch with single pocket and a sturdy plastic closure with adjustable webbing strap to wear comfortably over the shoulders or waist, and chrome finished hardware with black coil zipper
- 15" X 6"
- 100% Polyester



| | COLOR | O/S | | COLOR | O/S |
|----|------------|-----|----|--------|-----|
| A. | HOT RED | | C. | YELLOW | |
| B. | ROYAL BLUE | | D. | BLACK | |

WASTED HIP BAG

100010098

- Single pocket hip bag with zipper opening, adjustable webbing strap and sturdy plastic hardware closure. Features a logo emboried patch and offered in multiple fabrications
- 12 1/2" X 4 1/2"
- 100% Cotton



| | COLOR | O/S | | COLOR | O/S |
|----|-------------|-----|----|------------|-----|
| A. | RED PLAID | | D. | FIELD CAMO | |
| B. | TEAL CORD | | E. | DENIM | |
| C. | BLACK TWILL | | | | |

PATCHED DAILY SLING BAG

100010101

- Features patched flannel pattern, a logo emboried patch with single pocket and a sturdy plastic closure with adjustable webbing strap to wear comfortably over the shoulders or waist, and chrome finished hardware with black coil zipper
- 15" X 6"
- 100% Polyester

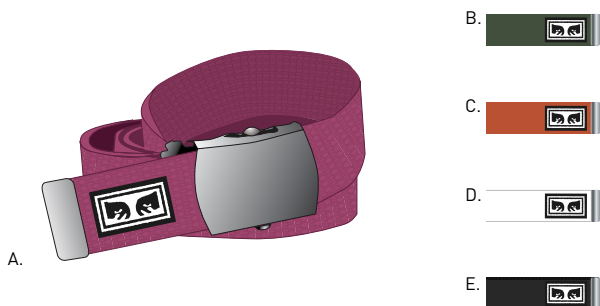


| | COLOR | O/S | | COLOR | O/S |
|----|-------------|-----|--|-------|-----|
| A. | PLAID MULTI | | | | |

BIG BOY BELT

100050026

- Adjustable webbing belt with antique silver hardware and a OBEY original label
- 60% Cotton / 40% Polyester



| | COLOR | O/S | | COLOR | O/S |
|----|--------------|-----|----|-------|-----|
| A. | RASPBERRY | | D. | WHITE | |
| B. | PINE | | E. | BLACK | |
| C. | DUSTY ORANGE | | | | |

ICON BRAIDED ELASTIC BELT

100050027

- Braided elastic belt with faux leather trims and black hardware
- Features OBEY original art stamped at faux leather tip and one pin roller belt buckle
- BELT: 100% Polyester, TRIM: 100% Genuine Leather



| | COLOR | S/M | M/L | | COLOR | S/M | M/L |
|----|-------|-----|-----|--|-------|-----|-----|
| A. | BLACK | | | | | | |

TOTES & SOCKS

OBEY DRINK CRUDE OIL

- Large one compartment tote bag with natural webbing handle
- Features an original OBEY artwork
- 20" x 15" x 5"
- 100% Cotton

100551845



| COLOR | | O/S | COLOR | | O/S |
|-------|---------|-----|-------|-------|-----|
| A. | NATURAL | | B. | BLACK | |

OBEY INT. ICON FACE

- Large one compartment tote bag with natural webbing handle
- Features an original OBEY artwork
- 20" x 15" x 5"
- 100% Cotton

100551848



| COLOR | | O/S | COLOR | | O/S |
|-------|-------|-----|-------|---------|-----|
| A. | BLACK | | B. | NATURAL | |

CHECKERS SOCKS

- Athletic socks with comfortable French terry footing
- Features a multicolor checkers jacquard and OBEY original logo embroidery
- 85% Cotton / 13% Polyester / 2% Elastane

100260122



| COLOR | | O/S | COLOR | | O/S |
|-------|------------------|-----|-------|-------------|-----|
| A. | CORAL PINK MULTI | | C. | BLACK MULTI | |
| B. | TEAL MULTI | | | | |

SCORPION SOCKS

- Athletic socks with comfortable French terry footing
- Features an OBEY original Scorpion jacquard print and embroidery
- 85% Cotton / 13% Polyester / 2% Elastane

100260123

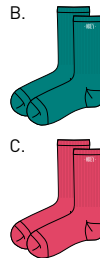


| COLOR | | O/S | COLOR | | O/S |
|-------|------------|-----|-------|-------------|-----|
| A. | PINE MULTI | | B. | BLACK MULTI | |

NEW TIMES EMBROIDERY SOCKS

- Athletic socks with comfortable French terry footing
- OBEY original logo embroidery
- 85% Cotton / 13% Polyester / 2% Elastane

100260111

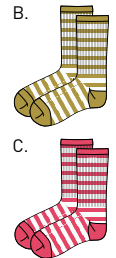


| COLOR | | O/S | COLOR | | O/S |
|-------|----------------------|-----|-------|--------------------|-----|
| A. | GOLDEN OLIVE / WHITE | | C. | CORAL PINK / WHITE | |
| B. | TEAL / WHITE | | | | |

DALE SOCKS

- Athletic socks with comfortable French terry footing
- Features a multicolor stripe and OBEY original logo embroidery
- 85% Cotton / 13% Polyester / 2% Elastane

100260119



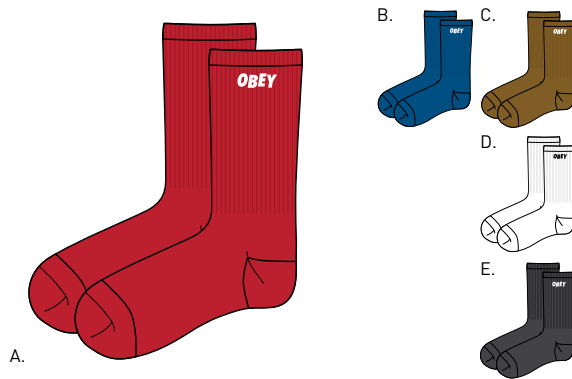
| COLOR | | O/S | COLOR | | O/S |
|-------|----------------------|-----|-------|--------------------|-----|
| A. | PINE / WHITE | | C. | CORAL PINK / WHITE | |
| B. | GOLDEN OLIVE / WHITE | | | | |

SOCKS & PINS

OBEY JUMBLED SOCKS

- Athletic socks with comfortable French terry footing
- OBEY original Jumble embroidery
- 85% Cotton / 13% Polyester / 2% Elastane

100260089



| | COLOR | Q/S | | COLOR | Q/S |
|----|------------------|-----|----|-------|-----|
| A. | HOT RED / WHITE | | D. | WHITE | |
| B. | BLUE / WHITE | | E. | BLACK | |
| C. | TAPENADE / WHITE | | | | |

COOPER II SOCKS

- Athletic socks with comfortable French terry footing
- Features a multicolor stripe and OBEY original logo embroidery
- 85% Cotton / 13% Polyester / 2% Elastane

100260093



| | COLOR | Q/S | | COLOR | Q/S |
|----|---------------|-----|----|--------------------|-----|
| A. | WHITE / LEMON | | C. | WHITE / CORAL PINK | |
| B. | WHITE / TEAL | | D. | WHITE / BLACK | |

OBEY INSIDE OUT PIN

- OBEY Inside Out pin with alloy finish enamel colored metal
- 2 locking backs to keep pin in place
- 100% Alloy

100220044



| | COLOR | Q/S | | | |
|----|---------------|-----|--|--|--|
| A. | BLACK / WHITE | | | | |

BE MINE PIN

- OBEY Face pin with alloy finish enamel colored metal
- 2 locking backs to keep pin in place
- 100% Alloy

100220047



| | COLOR | Q/S | | | |
|----|-------------|-----|--|--|--|
| A. | BLACK / RED | | | | |

SCORPION ROSE PIN

- OBEY Scorpion pin with alloy finish enamel colored metal
- 2 locking backs to keep pin in place
- 100% Alloy

100220045



| | COLOR | Q/S | | | |
|----|-------|-----|--|--|--|
| A. | BLACK | | | | |

SURVEILLANCE PIN

- OBEY Surveillance pin with alloy finish enamel colored metal
- 2 locking backs to keep pin in place
- 100% Alloy

100220046



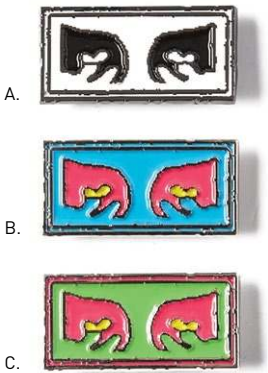
| | COLOR | Q/S | | | |
|----|-------------|-----|--|--|--|
| A. | BLACK / RED | | | | |

PINS

OBEY EYES PIN

- OBEY Eyes pin with alloy finish enamel colored metal
- 2 locking backs to keep pin in place
- 100% Alloy

100220036



| | COLOR | Q/S |
|----|---------------|-----|
| A. | BLACK / WHITE | |
| B. | BLUE MULTI | |

| | COLOR | Q/S |
|----|-------------|-----|
| C. | GREEN MULTI | |

CREEPER PIN

- OBEY Creeper gold alloy finish enamel colored metal
- 2 locking backs to keep pin in place
- 100% Alloy

100220013

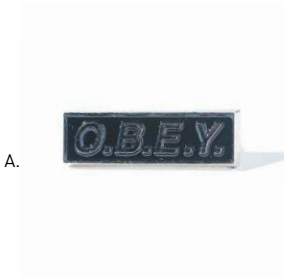


| | COLOR | Q/S |
|----|-------|-----|
| A. | WHITE | |

O.B.E.Y. PIN

- OBEY pin with silver alloy finish enamel colored metal
- 2 locking backs to keep pin in place
- 100% Alloy

100220022



| | COLOR | Q/S |
|----|-------|-----|
| A. | BLACK | |

EIGHTY NINE PIN

- OBEY Eighty Nine pin with gold alloy finish enamel colored metal
- 2 locking backs to keep pin in place
- 100% Alloy

100220011



| | COLOR | Q/S |
|----|-------|-----|
| A. | WHITE | |

ESSENTIALS

STICKER PACK 4

- Assorted stickers for the OBEY fiends. Spread it!

100270007



A.

| COLOR | | O/S | |
|-------|----------|-----|--|
| A. | ASSORTED | | |

STICKER PACK 2

- Assorted stickers for the OBEY fiends. Spread it!

100270001



A.

| COLOR | | O/S | |
|-------|----------|-----|--|
| A. | ASSORTED | | |

COVERT TO OVERT BOOK

326000035M

- OBEY: Covert to Overt showcases Shepard Fairey's evolution from works on paper to grander art installations, cross-cultural artworks, and music/art collaborations. The book also includes his ubiquitous streetwear and chronicles his return to public artworks. His signature blend of politics, street culture, and art makes Fairey unlike any other subculture/street artist working today.
- This book showcases the significant amount of art he has created the last several years: street murals, mixed-media installations, art/music events, countless silk screens, and work from his extremely successful OBEY brand.



A.

| COLOR | | O/S | |
|-------|----------|-----|--|
| A. | ASSORTED | | |

P.O.P.

OBEY INT. CONSPIRACY POP STAND

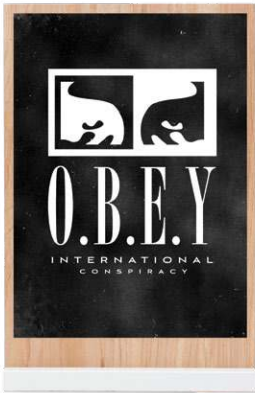
- Wood table top display
- Featuring a wheat pasted OBEY graphic
- 14" H X 7" W

326000135

SLAP ON POP STAND

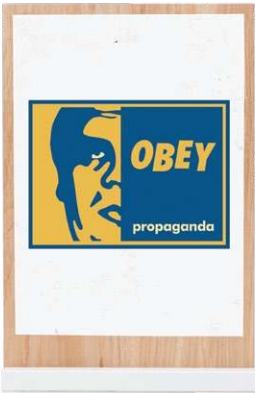
- Wood table top display
- Featuring a wheat pasted OBEY graphic
- 14" H X 7" W

326000136



A.

| COLOR | | O/S | | |
|-------|----------|-----|--|--|
| A. | ASSORTED | | | |



A.

| COLOR | | O/S | | |
|-------|----------|-----|--|--|
| A. | ASSORTED | | | |

JACKETS CATEGORY ROUND UP

121800347
LOVELY TRUCKER



121800351
HARD WORK LABOR JACKET



121800354
BENDER EYES JACKET



121800341
RISE UP BDU JACKET



121800334
LENSE JACKET



121800350
EYES JACKET



121800322
CLIFTON LEOPARD JACKET



121800233
BASTARDS LEATHER JACKET



121800239
BASTARDS PU JACKET



121800353
BLIZZARD POPLIN JACKET



121800352
TIMELESS JACKET



121800356
DIVISION DENIM JACKET



121810006
PACKING VEST



121800337
CROSSTOWN II ANORAK



121800339
DERBY BOX PARKA



121800336
BOUNCER PUFFER JACKET



121800333
RUNAROUND EYES JACKET



121800343
MORPHINE BOX PARKA



121800338
DEBASER II JACKET



121800346
DILLINGER HOODED JACKET



121800345
DILLINGER TRUCKER JACKET



121800335
DROPOUT LINER JACKET



121800349
RUSSET PARKA



121160013
STATION SHIRT JACKET



121800348
IGGY INSULATED JACKET



121800340
SINGFORD PARKA



121800287
HELLER II JACKET



SWEATERS CATEGORY ROUND UP

151000040
COURT SWEATER



151010013
COURT CARDIGAN II



151000041
ROEBLING SWEATER



151000039
SCORPION SWEATER



WOVEN CATEGORY ROUND UP

181200192
EIGHTY NINE WOVEN LS



181200193
EIGHTY NINE STRIPES LS



181200221
KEBLE DENIM WOVEN



181200246
DARCEY WOVEN



181200251
PEARCE WOVEN



181200237
OUTPOST WOVEN



181200249
ECHO WOVEN



181200238
HOMEBOUND WOVEN



181200245
VEDDER WOVEN



181200247
HIRSCH WOVEN



181200248
MYLES WOVEN



181200250
TRAPPER WOVEN



181210213
PROSPECT WOVEN SS



181200242
PROSPECT WOVEN LS



181210214
DIRTY LEO WOVEN SS



181200243
DIRTY LEO WOVEN LS



181210227
THRON WOVEN SS

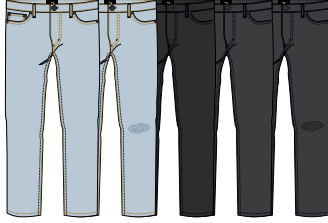


DENIM CATEGORY ROUND UP

142010064
BENDER EYES DENIM



142010055
JUVEE DENIM II



142010056
JUVEE FLOODED DENIM II



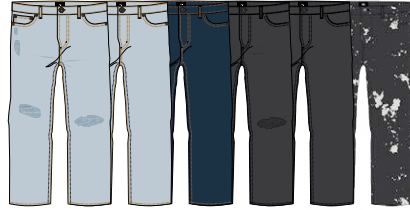
142010053
NEW THREAT DENIM II



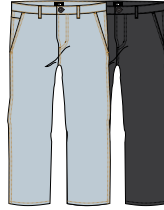
142010054
NEW THREAT CUT
DENIM



142010050
BENDER 90'S DENIM



142010060
BENDER CARPENTER DENIM



142010063
HARD WORK DENIM



142020119
HARD WORK CARPENTER PANT



PANTS CATEGORY ROUND UP

142020121
HARDWORK LABOR PANT



142020103
FUBAR CARGO PANT



142020112
EASY PANT II



142020120
EYES PANT



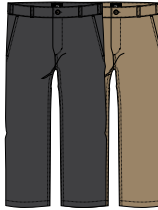
142020109
BORSTAL TRACK PANT



142020124
SAUCER PANT



142020099
LOITER PANT



142020106
FUBAR PLEATED PANT



142020113
STRAGGLER FLOODED PANT



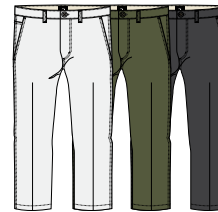
142020115
STRAGGLER STRIPE FLOODED PANT



142020114
STRAGGLER HOUNDSTOOTH FLOODED PANT



142020116
STRAGGLER CARPENTER PANT III



142020123
STRAGGLER PLAID CARPENTER PANT



142020097
RECON CARGO PANT



142020087
TRAVELER SLUR TWILL PANT



CUSTOM FLEECE CATEGORY ROUND UP

111600069
EIGHTY NINE ICON CREW



111620024
EIGHTY NINE ICON ZIP HOOD



111620034
BORSTAL TRACK JACKET



111620037
SAUCER POLO



111620025
LOFTY CREATURE COMFORTS CREW II



111620026
LOFTY CREATURE COMFORTS HOOD II



111620027
LOFTY COMFORTS ZIP HOOD



112480022
ALL EYEZ CREW



112470017
ALL EYEZ HOOD



112460002
ALL EYEZ ZIP HOOD



112480010
OBEY EYES HEAVY CREW



112470007
OBEY EYEZ HEAVY HOOD



112470011
ANYWAY HOOD



112470035
REASON ANORAK HOOD



112470026
NOUVELLE HOOD



111620042
NOUVELLE MOCK NECK ZIP



112470033
SID HOOD



111620039
MOUNTAIN MOCK NECK



111620043
BRIDGES MOCK NECK ZIP



112470036
WARP HOOD



112470037
GUSTO HOOD



KNITS CATEGORY ROUND UP

131080226
EIGHTY NINE SOLID BOX TEE SS



131030078
EIGHTY NINE SOLID BOX TEE LS



131080227
EIGHTY NINE ICON BOX TEE SS



131030079
EIGHTY NINE ICON BOX TEE LS



131080182
APEX TEE SS



131030068
APEX TEE LS



131080072
WISEMAKER POCKET TEE



131030069
NORMAL TEE LS



131080224
BORSTAL TEE SS



131030076
BORSTAL TEE LS



131080232
FLIGHT CLASSIC TEE SS



131030083
FLIGHT CLASSIC TEE LS



131040014
SCRIPT CLASSIC POLO LS



131030082
PEARL CLASSIC MOCK ZIP LS



131040016
GIMME CLASSIC POLO LS



167151578
NOVEL OBEY MOCK NECK SS



167161578
NOVEL OBEY MOCK NECK LS



166911838
NOVEL OBEY 3 HEAVYWEIGHT CLASSIC CUSTOM TEE



167101838
NOVEL OBEY 3 HEAVYWEIGHT BOX LS



131080225
ALL EYEZ TEE SS



131030077
ALL EYEZ TEE LS



166911826
OBEY EYES 3 HEAVYWEIGHT BOX TEE



167101826
OBEY EYES 3 HEAVYWEIGHT BOX LS



136881696
OBEY NEW WORLD 2 HOCKEY JERSEY



136881809
SCORPION ROSE HEAVYWEIGHT HOCKEY JERSEY



131080186
JUMBLE PIGMENT TEE SS





ARTIST SERIES

MARILYN RONDON

Marilyn Rondon also known as Caliente Chica or DJ totally stoked was born in Valencia, Venezuela and immigrated to Miami, Florida with her family at the young age of 5. She attended magnet art schools throughout her early childhood but graduated a year late from Design and Architecture Senior High school. She moved to NYC in '06 after spending a summer living and working as a waitress in Nantucket, MA.

Her art journey continued as a shop assistant at Fun City tattoo and Dare Devil tattoo where she got back to the basics of drawing and watercolor painting. After working in the tattoo scene for several years- she left the shop life to pursue continued education courses at the School of Visual Arts in Manhattan as well as pursue her passion as a DJ.

After years of battling substance abuse and major depression; Marilyn relocated to Miami, FL where she cleaned up and honed in on her talents. She began painting murals for a living and showcased her first conceptual art piece Latina Seeks Thug at the little Haiti country club in Miami in 2014. That same year, she began self-publishing her magazine Dat Ass Zine and curated her third show I've been planning while you're playing at Art Basel. In 2016 Rondon published her first children's book Why does Mommy have tattoos? with lit Riot press.

Marilyn's unique look has landed her major ad campaigns (Reebok, Good American, Discount Universe, Katy Perry INDI, York Athletics MFG). She's been featured in music videos and walked her first fashion show for Gypsy Sport SS17. Marilyn resides in sunny south beach where she practices Kundalini Yoga and continues to expand her artistic vision as well as educate herself and her social media following on mental health, nutrition, holistic living and mindfulness.

@CalienteChica

ARTIST SERIES: MARILYN RONDON

BASIC TEE - Regular fit crew neck tee with solid rib neck trims. Made in a heavyweight cotton. SOLID: 100% Cotton; HEATHER GREY: 90% Cotton / 10% Polyester
 BASIC LONG SLEEVE TEE - Regular fit crew neck long sleeve tee with set in rib trims. Made in a heavyweight cotton. SOLIDS: 100% Cotton; HEATHER GREY: 90% Cotton / 10% Polyester

| ANGELS 163081835 | | | | | |
|------------------|----|----|----|-----|------|
| SHIPPED BY COLOR | S. | M. | L. | XL. | XXL. |

GOLD



TEAL



WHITE

| OBEY YOURSELF 163081836 | | | | | |
|-------------------------|----|----|----|-----|------|
| SHIPPED BY COLOR | S. | M. | L. | XL. | XXL. |

GOLD



WHITE



TEAL

| LIPS 163081837 | | | | | |
|------------------|----|----|----|-----|------|
| SHIPPED BY COLOR | S. | M. | L. | XL. | XXL. |

TEAL



WHITE



GOLD

| ANGELS 164901835 | | | | | |
|------------------|----|----|----|-----|------|
| SHIPPED BY COLOR | S. | M. | L. | XL. | XXL. |

GOLD



TEAL



WHITE

| OBEY YOURSELF 164901836 | | | | | |
|-------------------------|----|----|----|-----|------|
| SHIPPED BY COLOR | S. | M. | L. | XL. | XXL. |

TEAL



WHITE



GOLD

HEAVYWEIGHT CLASSIC BOX TEE



166911861 FLOWER POWER

HEAVYWEIGHT CLASSIC BOX TEE

Heavyweight fabric custom box fit. Garment dye with softener wash. Made in the U.S.A.
100% Cotton



NOVEL OBEY 166911578

| SHIPPED BY COLOR | S. | M. | L. | XL. | XXL. |
|------------------|----|----|----|-----|------|
|------------------|----|----|----|-----|------|

OFF BLACK



EMERALD



DIJON



LT. BROWN

OBEY INT. ICON FACE 166911848

| SHIPPED BY COLOR | S. | M. | L. | XL. | XXL. |
|------------------|----|----|----|-----|------|
|------------------|----|----|----|-----|------|

OFF BLACK



DIJON



WHITE



BLUE MOON

FOREIGN CANDY 166911850

| SHIPPED BY COLOR | S. | M. | L. | XL. | XXL. |
|------------------|----|----|----|-----|------|
|------------------|----|----|----|-----|------|

OFF BLACK



LT. BROWN



ROYAL BLUE



EMERALD

FLOWER POWER 166911861

| SHIPPED BY COLOR | S. | M. | L. | XL. | XXL. |
|------------------|----|----|----|-----|------|
|------------------|----|----|----|-----|------|

OFF BLACK



LT. BROWN



SPECTRA YELLOW



ROYAL BLUE

MORE OF US 166911860

| SHIPPED BY COLOR | S. | M. | L. | XL. | XXL. |
|------------------|----|----|----|-----|------|
|------------------|----|----|----|-----|------|

LT. BROWN



EMERALD



WHITE



OFF BLACK

LOVE IS A DISASTER 166911870

| SHIPPED BY COLOR | S. | M. | L. | XL. | XXL. |
|------------------|----|----|----|-----|------|
|------------------|----|----|----|-----|------|

FOREST PINE



CORAL



CREAM



OFF BLACK



HEAVYWEIGHT CLASSIC BOX TEE

Heavyweight fabric custom box fit. Garment dye with softener wash. Made in the U.S.A.
100% Cotton

DESIRE 166911871

| SHIPPED BY COLOR | S. | M. | L. | XL. | XXL. |
|------------------|----|----|----|-----|------|
|------------------|----|----|----|-----|------|

CORAL



ATLANTIC GREEN



WHITE



OFF BLACK

FINAL EMBRACE 166911864

| SHIPPED BY COLOR | S. | M. | L. | XL. | XXL. |
|------------------|----|----|----|-----|------|
|------------------|----|----|----|-----|------|

FOREST PINE



LT BROWN



ROYAL BLUE



OFF BLACK

NO NUKES 166911863

| SHIPPED BY COLOR | S. | M. | L. | XL. | XXL. |
|------------------|----|----|----|-----|------|
|------------------|----|----|----|-----|------|

OFF BLACK



ATLANTIC GREEN



SPECTRA YELLOW



WHITE

STRONG MINDS 166911847

| SHIPPED BY COLOR | S. | M. | L. | XL. | XXL. |
|------------------|----|----|----|-----|------|
|------------------|----|----|----|-----|------|

LT. BROWN



ROYAL BLUE



WHITE



OFF BLACK

OBEY INTERNATIONAL 2 166911854

| SHIPPED BY COLOR | S. | M. | L. | XL. | XXL. |
|------------------|----|----|----|-----|------|
|------------------|----|----|----|-----|------|

FOREST PINE



BLUE MOON



WHITE



OFF BLACK

OBEY PHILOSOPHY 166911857

| SHIPPED BY COLOR | S. | M. | L. | XL. | XXL. |
|------------------|----|----|----|-----|------|
|------------------|----|----|----|-----|------|

OFF BLACK



LT. BROWN



WHITE



ATLANTIC GREEN

OBHEY PROPAGANDA



DISSENT & DESIRE

PREMIUM / BASIC TEES



165361844 MAKE AMERICA HATE AGAIN

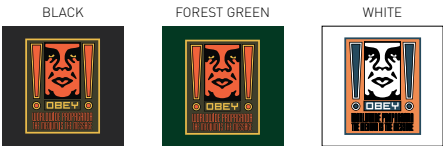
PREMIUM / BASIC TEES

PREMIUM TEE - Slim fit short sleeve tee with set in rib neck trim. Features soft lightweight jersey fabrication. SOLID: 100% Cotton; HEATHER GREY: 90% Cotton / 10% Polyester
BASIC TEE - Regular fit crew neck tee with solid rib neck trims. Features heavyweight jersey fabrication. SOLID: 100% Cotton; HEATHER GREY: 90% Cotton / 10% Polyester

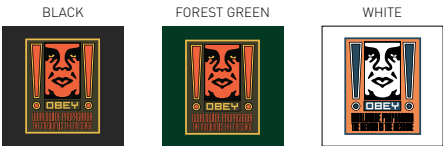


HTR. GREY

| | | | | | | |
|------------------|----|----|----|-----|------|-----------|
| EXCLAMATION | | | | | | 165361776 |
| SHIPPED BY COLOR | S. | M. | L. | XL. | XXL. | |



| | | | | | | |
|------------------|----|----|----|-----|------|-----------|
| EXCLAMATION | | | | | | 163081776 |
| SHIPPED BY COLOR | S. | M. | L. | XL. | XXL. | |



SAGE

| | | | | | | |
|------------------|----|----|----|-----|------|-----------|
| A. HOLE | | | | | | 165361862 |
| SHIPPED BY COLOR | S. | M. | L. | XL. | XXL. | |



| | | | | | | |
|------------------|----|----|----|-----|------|-----------|
| A. HOLE | | | | | | 163081862 |
| SHIPPED BY COLOR | S. | M. | L. | XL. | XXL. | |



BLACK

| | | | | | | |
|----------------------|----|----|----|-----|------|-----------|
| OBEY DISSENT & CHAOS | | | | | | 165361882 |
| SHIPPED BY COLOR | S. | M. | L. | XL. | XXL. | |



| | | | | | | |
|----------------------|----|----|----|-----|------|-----------|
| OBEY DISSENT & CHAOS | | | | | | 163081882 |
| SHIPPED BY COLOR | S. | M. | L. | XL. | XXL. | |



PREMIUM / BASIC TEES

PREMIUM TEE - Slim fit short sleeve tee with set in rib neck trim. Features soft lightweight cotton jersey fabrication. SOLID: 100% Cotton; HEATHER GREY: 90% Cotton / 10% Polyester
BASIC TEE - Regular fit crew neck tee with solid rib neck trims. Features heavyweight cotton jersey fabrication. SOLID: 100% Cotton; HEATHER GREY: 90% Cotton / 10% Polyester



GOLD

| | | | | | |
|----------------------------|----|----|----|-----|------|
| OBEDY PROP INTL. 165361883 | | | | | |
| SHIPPED BY COLOR | S. | M. | L. | XL. | XXL. |

BLACK



WHITE



| | | | | | |
|----------------------------|----|----|----|-----|------|
| OBEDY PROP INTL. 163081883 | | | | | |
| SHIPPED BY COLOR | S. | M. | L. | XL. | XXL. |

BLACK



WHITE



WHITE

| | | | | | |
|-------------------------------------------|----|----|----|-----|------|
| OBEDY CREATIVE DISSENT MONOGRAM 165361881 | | | | | |
| SHIPPED BY COLOR | S. | M. | L. | XL. | XXL. |

BLACK



SAGE



| | | | | | |
|-------------------------------------------|----|----|----|-----|------|
| OBEDY CREATIVE DISSENT MONOGRAM 163081881 | | | | | |
| SHIPPED BY COLOR | S. | M. | L. | XL. | XXL. |

BLACK



SAGE



BLACK

| | | | | | |
|-----------------------------------|----|----|----|-----|------|
| MAKE AMERICA HATE AGAIN 165361844 | | | | | |
| SHIPPED BY COLOR | S. | M. | L. | XL. | XXL. |

SAGE



WHITE



| | | | | | |
|-----------------------------------|----|----|----|-----|------|
| MAKE AMERICA HATE AGAIN 163081844 | | | | | |
| SHIPPED BY COLOR | S. | M. | L. | XL. | XXL. |

SAGE



WHITE



PREMIUM / BASIC TEES

PREMIUM TEE - Slim fit short sleeve tee with set in rib neck trim. Features soft lightweight jersey fabrication. SOLID: 100% Cotton; HEATHER GREY: 90% Cotton / 10% Polyester
BASIC TEE - Regular fit crew neck tee with solid rib neck trims. Features heavyweight jersey fabrication. SOLID: 100% Cotton; HEATHER GREY: 90% Cotton / 10% Polyester



BLACK

| | | | | | |
|-----------------------------------|----|----|----|-----|------|
| OBEY ELECTRIC FURY TIGER165361879 | | | | | |
| SHIPPED BY COLOR | S. | M. | L. | XL. | XXL. |

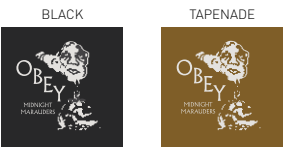


| | | | | | |
|-----------------------------------|----|----|----|-----|------|
| OBEY ELECTRIC FURY TIGER163081879 | | | | | |
| SHIPPED BY COLOR | S. | M. | L. | XL. | XXL. |

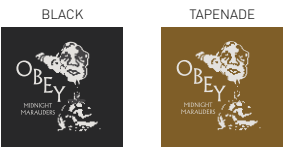


NATURAL

| | | | | | |
|----------------------------------|----|----|----|-----|------|
| OBEY MIDNIGHT MARAUDERS165361884 | | | | | |
| SHIPPED BY COLOR | S. | M. | L. | XL. | XXL. |



| | | | | | |
|----------------------------------|----|----|----|-----|------|
| OBEY MIDNIGHT MARAUDERS163081884 | | | | | |
| SHIPPED BY COLOR | S. | M. | L. | XL. | XXL. |



BLACK

| | | | | | |
|-----------------------------|----|----|----|-----|------|
| MASTERS OF DISSENT165361880 | | | | | |
| SHIPPED BY COLOR | S. | M. | L. | XL. | XXL. |



| | | | | | |
|-----------------------------|----|----|----|-----|------|
| MASTERS OF DISSENT163081880 | | | | | |
| SHIPPED BY COLOR | S. | M. | L. | XL. | XXL. |



PREMIUM / BASIC TEES

PREMIUM TEE - Slim fit short sleeve tee with set in rib neck trim. Features soft lightweight cotton jersey fabrication. SOLID: 100% Cotton; HEATHER GREY: 90% Cotton / 10% Polyester
BASIC TEE - Regular fit crew neck tee with solid rib neck trims. Features heavyweight cotton jersey fabrication. SOLID: 100% Cotton; HEATHER GREY: 90% Cotton / 10% Polyester



BLACK

| | | | | | |
|-------------------------|----|----|----|-----|------|
| BURNING INSIDE165361878 | | | | | |
| SHIPPED BY COLOR | S. | M. | L. | XL. | XXL. |

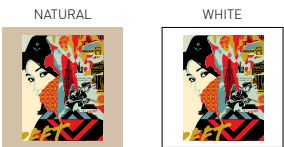


| | | | | | |
|-------------------------|----|----|----|-----|------|
| BURNING INSIDE163081878 | | | | | |
| SHIPPED BY COLOR | S. | M. | L. | XL. | XXL. |

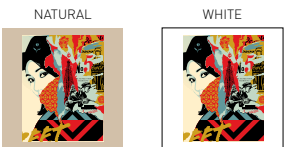


BLACK

| | | | | | |
|-------------------------------|----|----|----|-----|------|
| OBEY DRINK CRUDE OIL165361845 | | | | | |
| SHIPPED BY COLOR | S. | M. | L. | XL. | XXL. |

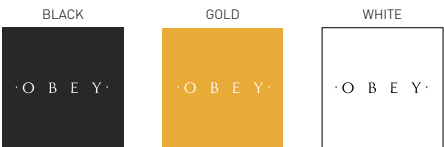


| | | | | | |
|-------------------------------|----|----|----|-----|------|
| OBEY DRINK CRUDE OIL163081845 | | | | | |
| SHIPPED BY COLOR | S. | M. | L. | XL. | XXL. |



FOREST GREEN

| | | | | | |
|---------------------|----|----|----|-----|------|
| NOVEL OBEY165361578 | | | | | |
| SHIPPED BY COLOR | S. | M. | L. | XL. | XXL. |



| | | | | | |
|---------------------|----|----|----|-----|------|
| NOVEL OBEY163081578 | | | | | |
| SHIPPED BY COLOR | S. | M. | L. | XL. | XXL. |



PREMIUM / BASIC TEES

PREMIUM TEE - Slim fit short sleeve tee with set in rib neck trim. Features soft lightweight jersey fabrication. SOLID: 100% Cotton; HEATHER GREY: 90% Cotton / 10% Polyester
BASIC TEE - Regular fit crew neck tee with solid rib neck trims. Features heavyweight jersey fabrication. SOLID: 100% Cotton; HEATHER GREY: 90% Cotton / 10% Polyester



PINE

| OBEY JUMBLED EYES | | | | | | 165361822 |
|-------------------|----|----|----|-----|------|-----------|
| SHIPPED BY COLOR | S. | M. | L. | XL. | XXL. | |



| OBEY JUMBLED EYES | | | | | | 163081822 |
|-------------------|----|----|----|-----|------|-----------|
| SHIPPED BY COLOR | S. | M. | L. | XL. | XXL. | |



BLACK

| OBEY INTERNATIONAL 2 | | | | | | 165361854 |
|----------------------|----|----|----|-----|------|-----------|
| SHIPPED BY COLOR | S. | M. | L. | XL. | XXL. | |

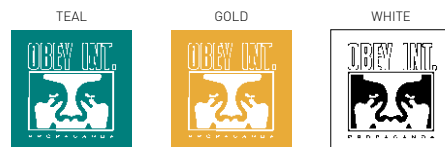


| OBEY INTERNATIONAL 2 | | | | | | 163081854 |
|----------------------|----|----|----|-----|------|-----------|
| SHIPPED BY COLOR | S. | M. | L. | XL. | XXL. | |

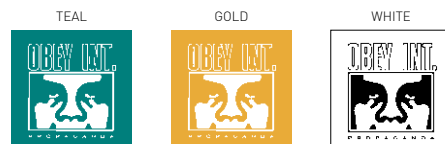


BLACK

| OBEY INT. ICON FACE | | | | | | 165361848 |
|---------------------|----|----|----|-----|------|-----------|
| SHIPPED BY COLOR | S. | M. | L. | XL. | XXL. | |



| OBEY INT. ICON FACE | | | | | | 163081848 |
|---------------------|----|----|----|-----|------|-----------|
| SHIPPED BY COLOR | S. | M. | L. | XL. | XXL. | |



PREMIUM / BASIC TEES

PREMIUM TEE - Slim fit short sleeve tee with set in rib neck trim. Features soft lightweight cotton jersey fabrication. SOLID: 100% Cotton; HEATHER GREY: 90% Cotton / 10% Polyester
BASIC TEE - Regular fit crew neck tee with solid rib neck trims. Features heavyweight cotton jersey fabrication. SOLID: 100% Cotton; HEATHER GREY: 90% Cotton / 10% Polyester



WHITE

| | | | | | |
|------------------|----|----|----|-----|-----------|
| OBEY INT. ICON | | | | | 165361856 |
| SHIPPED BY COLOR | S. | M. | L. | XL. | XXL. |



| | | | | | |
|------------------|----|----|----|-----|-----------|
| OBEY INT. ICON | | | | | 163081856 |
| SHIPPED BY COLOR | S. | M. | L. | XL. | XXL. |



TAPENADE

| | | | | | |
|------------------|----|----|----|-----|-----------|
| OBEY PHILOSOPHY | | | | | 165361857 |
| SHIPPED BY COLOR | S. | M. | L. | XL. | XXL. |

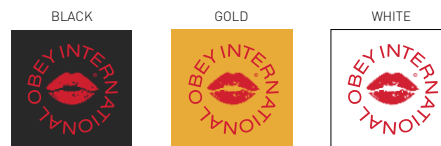


| | | | | | |
|------------------|----|----|----|-----|-----------|
| OBEY PHILOSOPHY | | | | | 163081857 |
| SHIPPED BY COLOR | S. | M. | L. | XL. | XXL. |

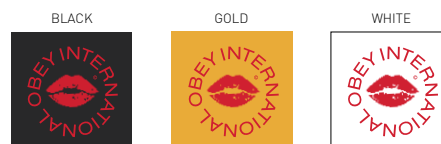


ROYAL BLUE

| | | | | | |
|------------------|----|----|----|-----|-----------|
| KISS OF OBEY | | | | | 165361858 |
| SHIPPED BY COLOR | S. | M. | L. | XL. | XXL. |



| | | | | | |
|------------------|----|----|----|-----|-----------|
| KISS OF OBEY | | | | | 163081858 |
| SHIPPED BY COLOR | S. | M. | L. | XL. | XXL. |



PREMIUM / BASIC TEES

PREMIUM TEE - Slim fit short sleeve tee with set in rib neck trim. Features soft lightweight jersey fabrication. SOLID: 100% Cotton; HEATHER GREY: 90% Cotton / 10% Polyester
BASIC TEE - Regular fit crew neck tee with solid rib neck trims. Features heavyweight jersey fabrication. SOLID: 100% Cotton; HEATHER GREY: 90% Cotton / 10% Polyester



TEAL

| | | | | | |
|--------------------|----|----|----|-----|-----------|
| OBEY INTERNATIONAL | | | | | 165361784 |
| SHIPPED BY COLOR | S. | M. | L. | XL. | XXL. |



| | | | | | |
|--------------------|----|----|----|-----|-----------|
| OBEY INTERNATIONAL | | | | | 163081784 |
| SHIPPED BY COLOR | S. | M. | L. | XL. | XXL. |



NAVY

| | | | | | |
|------------------|----|----|----|-----|-----------|
| OBEY INT. STAMP | | | | | 165361849 |
| SHIPPED BY COLOR | S. | M. | L. | XL. | XXL. |

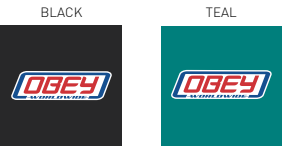


| | | | | | |
|------------------|----|----|----|-----|-----------|
| OBEY INT. STAMP | | | | | 163081849 |
| SHIPPED BY COLOR | S. | M. | L. | XL. | XXL. |

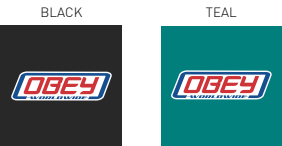


TAPENADE

| | | | | | |
|------------------|----|----|----|-----|-----------|
| FOREIGN CANDY | | | | | 165361850 |
| SHIPPED BY COLOR | S. | M. | L. | XL. | XXL. |



| | | | | | |
|------------------|----|----|----|-----|-----------|
| FOREIGN CANDY | | | | | 163081850 |
| SHIPPED BY COLOR | S. | M. | L. | XL. | XXL. |



PREMIUM / BASIC TEES

PREMIUM TEE - Slim fit short sleeve tee with set in rib neck trim. Features soft lightweight cotton jersey fabrication. SOLID: 100% Cotton; HEATHER GREY: 90% Cotton / 10% Polyester
BASIC TEE - Regular fit crew neck tee with solid rib neck trims. Features heavyweight cotton jersey fabrication. SOLID: 100% Cotton; HEATHER GREY: 90% Cotton / 10% Polyester



BLACK

| | | | | | |
|------------------------|----|----|----|-----|------|
| UNDERSTANDING165361859 | | | | | |
| SHIPPED BY COLOR | S. | M. | L. | XL. | XXL. |

LAVENDER



WHITE

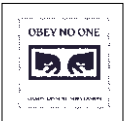


| | | | | | |
|------------------------|----|----|----|-----|------|
| UNDERSTANDING163081859 | | | | | |
| SHIPPED BY COLOR | S. | M. | L. | XL. | XXL. |

LAVENDER



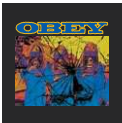
WHITE



TEAL

| | | | | | |
|---------------------|----|----|----|-----|------|
| MORE OF US165361860 | | | | | |
| SHIPPED BY COLOR | S. | M. | L. | XL. | XXL. |

BLACK

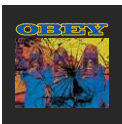


TAPENADE



| | | | | | |
|---------------------|----|----|----|-----|------|
| MORE OF US163081860 | | | | | |
| SHIPPED BY COLOR | S. | M. | L. | XL. | XXL. |

BLACK



TAPENADE



PINE

| | | | | | |
|-----------------------|----|----|----|-----|------|
| FLOWER POWER165361861 | | | | | |
| SHIPPED BY COLOR | S. | M. | L. | XL. | XXL. |

BLACK



TAPENADE



ROYAL BLUE



| | | | | | |
|-----------------------|----|----|----|-----|------|
| FLOWER POWER163081861 | | | | | |
| SHIPPED BY COLOR | S. | M. | L. | XL. | XXL. |

BLACK



TAPENADE



ROYAL BLUE



PREMIUM / BASIC TEES

PREMIUM TEE - Slim fit short sleeve tee with set in rib neck trim. Features soft lightweight jersey fabrication. SOLID: 100% Cotton; HEATHER GREY: 90% Cotton / 10% Polyester
BASIC TEE - Regular fit crew neck tee with solid rib neck trims. Features heavyweight jersey fabrication. SOLID: 100% Cotton; HEATHER GREY: 90% Cotton / 10% Polyester



BLACK

| | | | | | | |
|---------------------|----|----|----|-----|------|-----------|
| COMPUTER CONTROLLED | | | | | | 165361872 |
| SHIPPED BY COLOR | S. | M. | L. | XL. | XXL. | |



BLACK

| | | | | | | |
|---------------------|----|----|----|-----|------|-----------|
| COMPUTER CONTROLLED | | | | | | 163081872 |
| SHIPPED BY COLOR | S. | M. | L. | XL. | XXL. | |



| | | | | | | |
|------------------|----|----|----|-----|------|-----------|
| STRONG MINDS | | | | | | 165361847 |
| SHIPPED BY COLOR | S. | M. | L. | XL. | XXL. | |



| | | | | | | |
|------------------|----|----|----|-----|------|-----------|
| STRONG MINDS | | | | | | 163081847 |
| SHIPPED BY COLOR | S. | M. | L. | XL. | XXL. | |



SAGE

| | | | | | | |
|------------------|----|----|----|-----|------|-----------|
| NO NUKES | | | | | | 165361863 |
| SHIPPED BY COLOR | S. | M. | L. | XL. | XXL. | |



| | | | | | | |
|------------------|----|----|----|-----|------|-----------|
| NO NUKES | | | | | | 163081863 |
| SHIPPED BY COLOR | S. | M. | L. | XL. | XXL. | |



PREMIUM / BASIC TEES

PREMIUM TEE - Slim fit short sleeve tee with set in rib neck trim. Features soft lightweight cotton jersey fabrication. SOLID: 100% Cotton; HEATHER GREY: 90% Cotton / 10% Polyester
BASIC TEE - Regular fit crew neck tee with solid rib neck trims. Features heavyweight cotton jersey fabrication. SOLID: 100% Cotton; HEATHER GREY: 90% Cotton / 10% Polyester



BLACK

| | | | | | |
|------------------|----|----|----|-----|-----------|
| FINAL EMBRACE | | | | | 165361864 |
| SHIPPED BY COLOR | S. | M. | L. | XL. | XXL. |

ROYAL BLUE



TAPENADE



| | | | | | |
|------------------|----|----|----|-----|-----------|
| FINAL EMBRACE | | | | | 163081864 |
| SHIPPED BY COLOR | S. | M. | L. | XL. | XXL. |

ROYAL BLUE



TAPENADE



PINE

| | | | | | |
|------------------|----|----|----|-----|-----------|
| SPIDEY | | | | | 165361868 |
| SHIPPED BY COLOR | S. | M. | L. | XL. | XXL. |

BLACK



WHITE



| | | | | | |
|------------------|----|----|----|-----|-----------|
| SPIDEY | | | | | 163081868 |
| SHIPPED BY COLOR | S. | M. | L. | XL. | XXL. |

BLACK



WHITE



BLACK

| | | | | | |
|------------------|----|----|----|-----|-----------|
| AWAKENING | | | | | 165361867 |
| SHIPPED BY COLOR | S. | M. | L. | XL. | XXL. |

PINE



WHITE



| | | | | | |
|------------------|----|----|----|-----|-----------|
| AWAKENING | | | | | 163081867 |
| SHIPPED BY COLOR | S. | M. | L. | XL. | XXL. |

PINE



WHITE



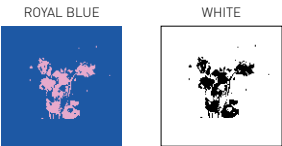
PREMIUM / BASIC TEES

PREMIUM TEE - Slim fit short sleeve tee with set in rib neck trim. Features soft lightweight jersey fabrication. SOLID: 100% Cotton; HEATHER GREY: 90% Cotton / 10% Polyester
BASIC TEE - Regular fit crew neck tee with solid rib neck trims. Features heavyweight jersey fabrication. SOLID: 100% Cotton; HEATHER GREY: 90% Cotton / 10% Polyester

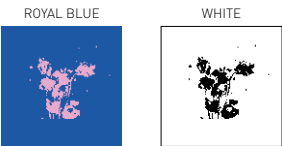


BLACK

| | | | | | |
|--------------------|----|----|----|-----|-----------|
| LOVE IS A DISASTER | | | | | 165361870 |
| SHIPPED BY COLOR | S. | M. | L. | XL. | XXL. |



| | | | | | |
|--------------------|----|----|----|-----|-----------|
| LOVE IS A DISASTER | | | | | 163081870 |
| SHIPPED BY COLOR | S. | M. | L. | XL. | XXL. |



BLACK

| | | | | | |
|------------------|----|----|----|-----|-----------|
| DESIRE | | | | | 165361871 |
| SHIPPED BY COLOR | S. | M. | L. | XL. | XXL. |



| | | | | | |
|------------------|----|----|----|-----|-----------|
| DESIRE | | | | | 163081871 |
| SHIPPED BY COLOR | S. | M. | L. | XL. | XXL. |



BASIC POCKET TEES

Regular fit short sleeve pocket tee with rib trims. Features heavyweight cotton jersey fabrication.
100% Cotton

OBEY EYES 3

163061826

| SHIPPED BY COLOR | S. | M. | L. | XL. | XXL. |
|------------------|----|----|----|-----|------|
|------------------|----|----|----|-----|------|

NAVY



FOREST GREEN



WHITE



BLACK

OBEY JUMBLED

163061216

| SHIPPED BY COLOR | S. | M. | L. | XL. | XXL. |
|------------------|----|----|----|-----|------|
|------------------|----|----|----|-----|------|

BLACK



NAVY



WHITE



FOREST GREEN

BASIC LONG SLEEVE TEES

Regular fit crew neck long sleeve tee with set in rib trims. Made in a heavyweight cotton
SOLIDS: 100% Cotton; HEATHER GREY: 90% Cotton / 10% Polyester

OBEY NEW WORLD 3

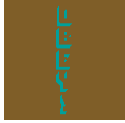
164901820

| SHIPPED BY COLOR | S. | M. | L. | XL. | XXL. |
|------------------|----|----|----|-----|------|
|------------------|----|----|----|-----|------|

BLACK



TAPENADE



WHITE



SAGE

UNDERSTANDING

164901859

| SHIPPED BY COLOR | S. | M. | L. | XL. | XXL. |
|------------------|----|----|----|-----|------|
|------------------|----|----|----|-----|------|

PINE



LAVENDER



WHITE



BLACK

COMPUTER CONTROLLED

164901872

| SHIPPED BY COLOR | S. | M. | L. | XL. | XXL. |
|------------------|----|----|----|-----|------|
|------------------|----|----|----|-----|------|

BLACK



TAPENADE



WHITE



PINE

AWAKENING

164901867

| SHIPPED BY COLOR | S. | M. | L. | XL. | XXL. |
|------------------|----|----|----|-----|------|
|------------------|----|----|----|-----|------|

BLACK



PINE



WHITE



TAPENADE

SPIDEY

164901868

| SHIPPED BY COLOR | S. | M. | L. | XL. | XXL. |
|------------------|----|----|----|-----|------|
|------------------|----|----|----|-----|------|

BLACK



TAPENADE



WHITE



FOREST GREEN

FINAL EMBRACE

164901864

| SHIPPED BY COLOR | S. | M. | L. | XL. | XXL. |
|------------------|----|----|----|-----|------|
|------------------|----|----|----|-----|------|

FOREST GREEN



TAPENADE



PINE



BLACK

BASIC PULLOVER HOOD FLEECE

Regular fit hooded fleece with pouch pocket, rib trim and set in sleeves
SOLID: 80% Cotton / 20% Polyester; HEATHER GREY: 52% Cotton / 48% Polyester

OBHEY NEW WORLD 111731644

| SHIPPED BY COLOR | S. | M. | L. | XL. | XXL. |
|------------------|----|----|----|-----|------|
|------------------|----|----|----|-----|------|

BLACK



TEAL BLUE



LAVENDER



GOLD

MORE OF US 111731860

| SHIPPED BY COLOR | S. | M. | L. | XL. | XXL. |
|------------------|----|----|----|-----|------|
|------------------|----|----|----|-----|------|

BLACK



ROYAL BLUE



HTR. GREY



TEAL BLUE

OBHEY INTERNATIONAL 111731784

| SHIPPED BY COLOR | S. | M. | L. | XL. | XXL. |
|------------------|----|----|----|-----|------|
|------------------|----|----|----|-----|------|

BLACK



SLATE BLUE



GOLD



APLINE

OBHEY INT. ICON 111731856

| SHIPPED BY COLOR | S. | M. | L. | XL. | XXL. |
|------------------|----|----|----|-----|------|
|------------------|----|----|----|-----|------|

RED



GOLD



ROYAL BLUE



BLACK

KISS OF OBHEY 111731858

| SHIPPED BY COLOR | S. | M. | L. | XL. | XXL. |
|------------------|----|----|----|-----|------|
|------------------|----|----|----|-----|------|

BLACK



GOLD



ROYAL BLUE



LAVENDER

STRONG MINDS 111731847

| SHIPPED BY COLOR | S. | M. | L. | XL. | XXL. |
|------------------|----|----|----|-----|------|
|------------------|----|----|----|-----|------|

BLACK



ROYAL BLUE



TEAL BLUE



HTR. GREY

BASIC BOX CREW NECK FLEECE

Oversized fit box crew neck fleece with rib trims and set in sleeves
50% Cotton / 50% Polyester

OBEY STAR FACE

114981668

| SHIPPED BY COLOR | S. | M. | L. | XL. | XXL. |
|------------------|----|----|----|-----|------|
|------------------|----|----|----|-----|------|

NAVY



FOREST GREEN



ASH



BLACK

OBEY RECORDS 2

114981786

| SHIPPED BY COLOR | S. | M. | L. | XL. | XXL. |
|------------------|----|----|----|-----|------|
|------------------|----|----|----|-----|------|

BLACK



ROYAL BLUE



RED



ASH

DESIRE

114981871

| SHIPPED BY COLOR | S. | M. | L. | XL. | XXL. |
|------------------|----|----|----|-----|------|
|------------------|----|----|----|-----|------|

PINK



ASH



BLACK

NO NUKES

114981863

| SHIPPED BY COLOR | S. | M. | L. | XL. | XXL. |
|------------------|----|----|----|-----|------|
|------------------|----|----|----|-----|------|

BLACK



ASH



FOREST GREEN

BASIC ZIP HOOD FLEECE

Regular fit hooded fleece with zip front, rib trim and set in sleeve
SOLID: 80% Cotton / 20% Polyester; HEATHER GREY: 52% Cotton / 48% Polyester

| | | | | | |
|------------------|----|----|----|-----|-----------|
| THE CREEPER | | | | | 111751247 |
| SHIPPED BY COLOR | S. | M. | L. | XL. | XXL. |



| | | | | | |
|------------------|----|----|----|-----|-----------|
| OBEY NEW WORLD 3 | | | | | 111751820 |
| SHIPPED BY COLOR | S. | M. | L. | XL. | XXL. |





**CUSTOM HEAVYWEIGHT PIGMENT DYED
TEES, LONG SLEEVES TEES, AND FLEECE**



166721867 AWAKENING

CUSTOM HEAVYWEIGHT PIGMENT TEE

Cutom fit short sleeve pigment dyed crew neck tee with set in rib trims. Features a heavyweight jersey fabrication.
100% Cotton.

NOVEL OBEY

166721578

| SHIPPED BY COLOR | S. | M. | L. | XL. | XXL. |
|------------------|----|----|----|-----|------|
|------------------|----|----|----|-----|------|

DUSTY BLACK



DUSTY DARK TEAL



DUSTY TAPENADE



DUSTY DARK ROSE

OBEY JUMBLE LO-FI

166721489

| SHIPPED BY COLOR | S. | M. | L. | XL. | XXL. |
|------------------|----|----|----|-----|------|
|------------------|----|----|----|-----|------|

DUSTY BLACK



DUSTY GOLD



DUSTY LAVENDER



DUSTY TEAL BLUE

UNDERSTANDING

166721859

| SHIPPED BY COLOR | S. | M. | L. | XL. | XXL. |
|------------------|----|----|----|-----|------|
|------------------|----|----|----|-----|------|

DUSTY BLACK



DUSTY DARK TEAL



DUSTY LAVENDER

AWAKENING

166721867

| SHIPPED BY COLOR | S. | M. | L. | XL. | XXL. |
|------------------|----|----|----|-----|------|
|------------------|----|----|----|-----|------|

DUSTY DARK TEAL



DUSTY TAPENADE



DUSTY BLACK

COMPUTER CONTROLLED

166721872

| SHIPPED BY COLOR | S. | M. | L. | XL. | XXL. |
|------------------|----|----|----|-----|------|
|------------------|----|----|----|-----|------|

DUSTY BLACK



DUSTY GRAPE



DUSTY GOLD

SPIDEY

166721868

| SHIPPED BY COLOR | S. | M. | L. | XL. | XXL. |
|------------------|----|----|----|-----|------|
|------------------|----|----|----|-----|------|

DUSTY BLACK



DUSTY GRAPE



DUSTY DARK TEAL

CUSTOM HEAVYWEIGHT PIGMENT LONG SLEEVE TEE

Custom hfit long sleeve crew neck pigment dyed tee with set in rib trims. Features a heavyweight jersey fabrication.
100% Cotton.

NOVEL OBEY

166731578

| SHIPPED BY COLOR | S. | M. | L. | XL. | XXL. |
|------------------|----|----|----|-----|------|
|------------------|----|----|----|-----|------|

DUSTY BLACK



DARK DARK TEAL



DUSTY DARK ROSE



DUSTY TAPENADE

OBEY INTERNATIONAL 2

166731854

| SHIPPED BY COLOR | S. | M. | L. | XL. | XXL. |
|------------------|----|----|----|-----|------|
|------------------|----|----|----|-----|------|

DUSTY BLACK



DUSTY GRAPE



DUSTY GOLD



DUSTY DARK TEAL

MORE OF US

166731860

| SHIPPED BY COLOR | S. | M. | L. | XL. | XXL. |
|------------------|----|----|----|-----|------|
|------------------|----|----|----|-----|------|

DUSTY BLACK



DUSTY TAPENADE



DUSTY GRAPE

FLOWER POWER

166731861

| SHIPPED BY COLOR | S. | M. | L. | XL. | XXL. |
|------------------|----|----|----|-----|------|
|------------------|----|----|----|-----|------|

DUSTY BLACK



DUSTY TAPENADE



DUSTY TEAL BLUE



DUSTY LAVENDER

LOVE IS A DISASTER

166731870

| SHIPPED BY COLOR | S. | M. | L. | XL. | XXL. |
|------------------|----|----|----|-----|------|
|------------------|----|----|----|-----|------|

DUSTY DARK TEAL



DUSTY TAPENADE



DUSTY BLACK

DESIRE

166731871

| SHIPPED BY COLOR | S. | M. | L. | XL. | XXL. |
|------------------|----|----|----|-----|------|
|------------------|----|----|----|-----|------|

DUSTY TAPENADE



DUSTY DARK ROSE



DUSTY BLACK

CUSTOM PIGMENT HOOD FLEECE

Custom fit pigment dyed fleece pullover hoodie with set in sleeves and pouch pocket at front. Features a heavyweight fleece fabrication.
80% Cotton / 20% Polyester

| | | | | | |
|------------------|-----------|----|----|-----|------|
| NOVEL OBEY | 112651578 | | | | |
| SHIPPED BY COLOR | S. | M. | L. | XL. | XXL. |



DUSTY ROSE

| | | | | | |
|---------------------|-----------|----|----|-----|------|
| OBEY INT. ICON FACE | 112651848 | | | | |
| SHIPPED BY COLOR | S. | M. | L. | XL. | XXL. |



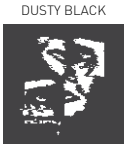
DUSTY BLACK

| | | | | | |
|------------------|-----------|----|----|-----|------|
| OBEY PHILOSOPHY | 112651857 | | | | |
| SHIPPED BY COLOR | S. | M. | L. | XL. | XXL. |



DUSTY PINE

| | | | | | |
|---------------------|-----------|----|----|-----|------|
| COMPUTER CONTROLLED | 112651872 | | | | |
| SHIPPED BY COLOR | S. | M. | L. | XL. | XXL. |



DUSTY TAPENADE

CUSTOM PIGMENT CREW FLEECE

Custom box fit pigment dyed fleece crew neck with set in rib trims. Features a heavyweight fleece fabrication.
80% Cotton / 20% Polyester

OBHEY INT. ICON FACE

112691848

| SHIPPED BY COLOR | S. | M. | L. | XL. | XXL. |
|------------------|----|----|----|-----|------|
|------------------|----|----|----|-----|------|

DUSTY BLACK



DUSTY TAPENADE



DUSTY ROSE



DUSTY PINE

OBHEY PHILOSOPHY

112691857

| SHIPPED BY COLOR | S. | M. | L. | XL. | XXL. |
|------------------|----|----|----|-----|------|
|------------------|----|----|----|-----|------|

DUSTY TAPENADE



DUSTY PINE



DUSTY ROSE



DUSTY BLACK

CUSTOM PIGMENT ANORAK HOODED FLEECE

Custom box fit pigment dyed anorak hooded fleece with set in rib trims and silver zipper. Features a heavyweight fleece fabrication.
80% Cotton / 20% Polyester

OBHEY INTERNATIONAL 2

112751854

| SHIPPED BY COLOR | S. | M. | L. | XL. | XXL. |
|------------------|----|----|----|-----|------|
|------------------|----|----|----|-----|------|

DUSTY TAPENADE



DUSTY PINE



DUSTY ROSE



DUSTY BLACK

KISS OF OBHEY

112751858

| SHIPPED BY COLOR | S. | M. | L. | XL. | XXL. |
|------------------|----|----|----|-----|------|
|------------------|----|----|----|-----|------|

DUSTY BLACK



DUSTY TAPENADE



DUSTY ROSE



DUSTY PINE

CUSTOM PIGMENT MOCK NECK FLEECE

Custom box fit pigment dyed mock neck fleece with set in rib trims and silver zipper. Features a heavyweight fleece fabrication.
80% Cotton / 20% Polyester

| | | | | | | |
|----------------------|----|----|----|-----|------|-----------|
| OBEY INTERNATIONAL 2 | | | | | | 112771854 |
| SHIPPED BY COLOR | S. | M. | L. | XL. | XXL. | |



DUSTY PINE

| | | | | | | |
|------------------|----|----|----|-----|------|-----------|
| FLOWER POWER | | | | | | 112771861 |
| SHIPPED BY COLOR | S. | M. | L. | XL. | XXL. | |



DUSTY TAPENADE



**CUSTOM HEAVYWEIGHT BLEACH DYED
TEES, LONG SLEEVES, AND FLEECE**



166751848 OBEY INT. ICON FACE

BLEACH TIE DYE TEE

Regular fit short sleeve crew neck tee bleach tie dyed with set in rib trims. Features a heavyweight jersey fabrication.
100% Cotton

NOVEL OBEY

166741578

| SHIPPED BY COLOR | S. | M. | L. | XL. | XXL. |
|------------------|----|----|----|-----|------|
|------------------|----|----|----|-----|------|

BLACK



TAPENADE



ROSE



DARK TEAL

OBEY PHILOSOPHY

166741857

| SHIPPED BY COLOR | S. | M. | L. | XL. | XXL. |
|------------------|----|----|----|-----|------|
|------------------|----|----|----|-----|------|

BLACK



DARK TEAL



ROSE



TAPENADE

FLOWER POWER

166741861

| SHIPPED BY COLOR | S. | M. | L. | XL. | XXL. |
|------------------|----|----|----|-----|------|
|------------------|----|----|----|-----|------|

BLACK



DARK TEAL



TAPENADE



ROSE

FINAL EMBRACE

166741864

| SHIPPED BY COLOR | S. | M. | L. | XL. | XXL. |
|------------------|----|----|----|-----|------|
|------------------|----|----|----|-----|------|

TAPENADE



DARK TEAL



ROSE



BLACK

BLEACH TIE DYE LONG SLEEVE TEE

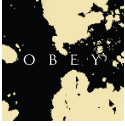
Regular fit long sleeve crew neck bleach tie dyed tee with set in rib trims. Features a heavyweight jersey fabrication.
100% Cotton

NOVEL OBEY

166751578

| SHIPPED BY COLOR | S. | M. | L. | XL. | XXL. |
|------------------|----|----|----|-----|------|
|------------------|----|----|----|-----|------|

BLACK



TAPENADE



DARK TEAL



ROSE

OBEY PHILOSOPHY

166751857

| SHIPPED BY COLOR | S. | M. | L. | XL. | XXL. |
|------------------|----|----|----|-----|------|
|------------------|----|----|----|-----|------|

BLACK



TAPENADE



ROSE



DARK TEAL

OBEY INT. ICON FACE

166751848

| SHIPPED BY COLOR | S. | M. | L. | XL. | XXL. |
|------------------|----|----|----|-----|------|
|------------------|----|----|----|-----|------|

TAPENADE



DARK TEAL



ROSE



BLACK

NO NUKES

166751863

| SHIPPED BY COLOR | S. | M. | L. | XL. | XXL. |
|------------------|----|----|----|-----|------|
|------------------|----|----|----|-----|------|

BLACK



DARK TEAL



ROSE



TAPENADE

BLEACH TIE DYE HOODED FLEECE

Regular fit hooded fleece bleach tie dyed with pouch pocket, rib trim and set in sleeves.
80% Cotton / 20% Polyester

OBEY JUMBLED EYES

112621822

| SHIPPED BY COLOR | S. | M. | L. | XL. | XXL. |
|------------------|----|----|----|-----|------|
|------------------|----|----|----|-----|------|

TAPENADE



DARK TEAL



ROSE



BLACK

OBEY INTERNATIONAL 2

112621854

| SHIPPED BY COLOR | S. | M. | L. | XL. | XXL. |
|------------------|----|----|----|-----|------|
|------------------|----|----|----|-----|------|

BLACK



TAPENADE



ROSE



DARK TEAL

BLEACH TIE DYE CREW FLEECE

Regular fit crew neck fleece bleach tie dyed with rib trims and set in sleeves.
80% Cotton / 20% Polyester

OBEY JUMBLED EYES

112631822

| SHIPPED BY COLOR | S. | M. | L. | XL. | XXL. |
|------------------|----|----|----|-----|------|
|------------------|----|----|----|-----|------|

BLACK



TAPENADE



DARK TEAL



ROSE

OBEY INTERNATIONAL 2

112631854

| SHIPPED BY COLOR | S. | M. | L. | XL. | XXL. |
|------------------|----|----|----|-----|------|
|------------------|----|----|----|-----|------|

BLACK



DARK TEAL



ROSE



TAPENADE

CUSTOM TEES



166141879 OBEY ELECTRIC FURY TIGER

SUPERIOR TEE

Slim fit crew neck tee with set in rib trim. Features a super soft fine knit jersey fabrication.
100% Cotton

MAKE AMERICA HATE AGAIN

166141844

| SHIPPED BY COLOR | S. | M. | L. | XL. | XXL. |
|------------------|----|----|----|-----|------|
|------------------|----|----|----|-----|------|

TAPENADE



WHITE



LIMO BLACK

OBEY DISSENT & CHAOS

166141882

| SHIPPED BY COLOR | S. | M. | L. | XL. | XXL. |
|------------------|----|----|----|-----|------|
|------------------|----|----|----|-----|------|

LIMO BLACK



CHILI PEPPER



WHITE

OBEY CREATIVE DISSENT MONOGRAM

166141881

| SHIPPED BY COLOR | S. | M. | L. | XL. | XXL. |
|------------------|----|----|----|-----|------|
|------------------|----|----|----|-----|------|

LIMO BLACK



WHITE



CHILI PEPPER

OBEY PROP INTL.

166141883

| SHIPPED BY COLOR | S. | M. | L. | XL. | XXL. |
|------------------|----|----|----|-----|------|
|------------------|----|----|----|-----|------|

LIMO BLACK



STEEL GREEN



CORSAIR

OBEY DISSENT CLUB

166141885

| SHIPPED BY COLOR | S. | M. | L. | XL. | XXL. |
|------------------|----|----|----|-----|------|
|------------------|----|----|----|-----|------|

LIMO BLACK



TAPENADE



STEEL GREEN

OBEY ELECTRIC FURY TIGER

166141879

| SHIPPED BY COLOR | S. | M. | L. | XL. | XXL. |
|------------------|----|----|----|-----|------|
|------------------|----|----|----|-----|------|

LIMO BLACK



CORSAIR



TAPENADE

PREMIUM CONTRAST TEE

Regular fit short sleeve tee with contrast set in rib trim. Made in an extra soft lightweight cotton.
SOLID: 100% Cotton; HEATHER GREY: 90% Cotton / 10% Polyester

OBEY INTERNATIONAL

166651784

| SHIPPED BY COLOR | S. | M. | L. | XL. | XXL. |
|------------------|----|----|----|-----|------|
|------------------|----|----|----|-----|------|

TAPENADE / BLACK



HTR. GREY / BLACK



WHITE / BLACK

FOREIGN CANDY

166651850

| SHIPPED BY COLOR | S. | M. | L. | XL. | XXL. |
|------------------|----|----|----|-----|------|
|------------------|----|----|----|-----|------|

TAPENADE / BLACK



HTR. GREY / BLACK



POWDER BLUE / BLACK

FLOWER POWER

166651861

| SHIPPED BY COLOR | S. | M. | L. | XL. | XXL. |
|------------------|----|----|----|-----|------|
|------------------|----|----|----|-----|------|

LAVENDER / BLACK



POWDER BLUE / BLACK



TAPENADE / BLACK

KISS OF OBEY

166651858

| SHIPPED BY COLOR | S. | M. | L. | XL. | XXL. |
|------------------|----|----|----|-----|------|
|------------------|----|----|----|-----|------|

POWDER BLUE / BLACK



WHITE BLACK



LAVENDER / BLACK



PRINTED JACKETS



121401820 OBEY NEW WORLD 3

ANORAK PULLOVER HOOD

Regular fit hooded nylon anorak jacket with raglan sleeves, tricot lining, patch pockets and zipper closure at center front and elastic cuffs.
100% Nylon

OBEY NEW WORLD 3

121401820

| SHIPPED BY COLOR | S. | M. | L. | XL. | XXL. |
|------------------|----|----|----|-----|------|
|------------------|----|----|----|-----|------|

FIELD CAMO



BURNT OLIVE



BLACK

MORE OF US

121401860

| SHIPPED BY COLOR | S. | M. | L. | XL. | XXL. |
|------------------|----|----|----|-----|------|
|------------------|----|----|----|-----|------|

BLACK



BURNT OLIVE



FIELD CAMO

CLASSIC COACHES JACKET

Regular fit nylon jacket with raglan sleeves. Features an all over tricot lining and snap closure front.
SHELL: 100% Nylon; LINING: 100% Polyester

ANYWAY

125001638

| SHIPPED BY COLOR | S. | M. | L. | XL. | XXL. |
|------------------|----|----|----|-----|------|
|------------------|----|----|----|-----|------|

BLACK



DARK TEAL



RASPBERRY



CAMO



TAPENADE

HOODED SNAP COACHES JACKET

Regular fit hooded nylon coaches jacket with cap sleeves. Features all over tricot lining and snap closure at center front.
SHELL: 100% Nylon; LINING: 100% Polyester

ANYWAY126251638

| | | | | | |
|------------------|----|----|----|-----|------|
| SHIPPED BY COLOR | S. | M. | L. | XL. | XXL. |
|------------------|----|----|----|-----|------|

BLACK

OBEY

RASPBERRY

OBEY


TAPENADE

OBEY

CAMO

OBEY

DARK TEAL



PRINTABLE FIT GUIDE

PREMIUM TEE

- Slim fit tee
- Feature extra soft lightweight fabrication
- Solid: 100% Cotton
Heather Grey: 90% Cotton / 10% Polyester



BASIC TEE

- Regular fit tee
- Feature heavyweight fabrication
- Solid: 100% Cotton
Heather Grey: 90% Cotton / 10% Polyester



BASIC POCKET TEE

- Regular fit short sleeve pocket tee
- Feature rib trims and a heavyweight cotton jersey fabrication
- 100% Cotton



PRINTABLE FIT GUIDE

BASIC LONG SLEEVE TEE

- Regular fit
- Feature heavyweight fabrication
- Solid: 100% Cotton
- Heather Grey: 90% Cotton / 10% Polyester



HEAVYWEIGHT CLASSIC BOX TEE

- Custom box fit
- Feature garment dye with softener wash and a heavyweight fabrication
- Made in the U.S.A.
- 100% Cotton.



CUSTOM HEAVYWEIGHT PIGMENT TEE

- Regular fit pigment dyed tee
- Feature a heavyweight jersey fabrication
- 100% Cotton.



PRINTABLE FIT GUIDE

CUSTOM HEAVYWEIGHT PIGMENT LONG SLEEVE TEE

- Regular fit long sleeve crew pigment dyed tee
- Feature set in rib trims and heavyweight jersey fabrication
- 100% Cotton



SUPERIOR TEE

- Slim fit tee
- Feature super soft fine knit jersey fabrication
- 100% Cotton



PREMIUM CONTRAST TEE

- Regular fit tee
- Feature contrast set in rib and soft lightweight fabrication
- Solids: 100% Cotton
Heather grey: 90% Cotton / 10% Polyester



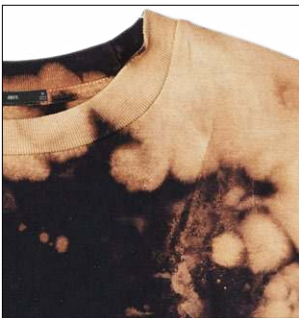
BLEACH TIE DYE TEE

- Regular fit bleach tie dyed short sleeve tee
- Feature set in rib trims and a heavyweight jersey fabrication
- 100% Cotton



BLEACH TIE DYE LONG SLEEVE TEE

- Regular fit bleach tie dyed long sleeve tee
- Feature set in rib trims and a heavyweight jersey fabrication
- 80% Cotton / 20% Polyester



BLEACH TIE DYE HOODED FLEECE

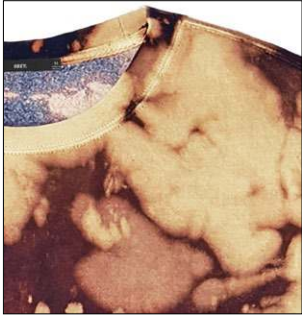
- Regular fit bleach tie dyed hooded fleece
- Feature pouch pocket, rib trim and set in sleeves
- 80% Cotton / 20% Polyester



PRINTABLE FIT GUIDE

BLEACH TIE DYE CREW FLEECE

- Regular fit bleach tie dyed crew neck fleece
- Feature rib trims and set in sleeves
- 80% Cotton / 20% Polyester



BASIC PULLOVER HOOD FLEECE

- Regular fit hooded fleece
- Feature set in sleeves, and pouch pocket at front
- SOLID: 80% Cotton / 20% Polyester;
HEATHER GREY: 52% Cotton / 48% Polyester



BASIC BOX CREW NECK FLEECE

- Oversized fit crew neck fleece
- Feature set in rib trims
- 50% Cotton / 50% Polyester



BASIC ZIP HOOD FLEECE

- Regular fit hooded zip fleece
- Feature silver zipper closure
- SOLID: 80% Cotton / 20% Polyester;
HEATHER GREY: 52% Cotton / 48% Polyester



CUSTOM PIGMENT HOODED FLEECE

- Custom fit pigment dyed fleece pullover hoodie
- Feature set in sleeves, pouch pocket at front, and heavyweight fleece fabrication
- 80% Cotton / 20% Polyester



CUSTOM PIGMENT CREW FLEECE

- Custom box fit pigment dyed fleece crew neck
- Feature set in rib trims and a heavyweight fleece fabrication
- 80% Cotton / 20% Polyester



CUSTOM PIGMENT ANORAK HOODED FLEECE

- Custom box fit pigment dyed anorak hooded fleece
- Features set in rib trims, silver zipper and a heavyweight fleece fabrication
- 80% Cotton / 20% Polyester



CUSTOM PIGMENT MOCK NECK FLEECE

- Custom box fit pigment dyed mock neck fleece
- Feature set in rib trims, silver zipper, and a heavyweight fleece fabrication
- 80% Cotton / 20% Polyester



HOODED SNAP COACHES JACKET

- Regular fit raglan sleeves hooded snap coaches jacket
- Feature tricot lining and snap closure
- Shell: 100% Nylon
Lining: 100% Polyester



CLASSIC COACHES JACKET

- Regular fit raglan sleeves coaches jacket
- Feature tricot lining and snap closure
- Shell: 100% Nylon
Lining: 100% Polyester



ANORAK PULLOVER HOOD

- Regular fit raglan sleeves anorak pullover hood jacket
- Feature Tricot lining, patch pockets zipper closure and elastic cuffs.
- 100% Nylon



OB* *EY

WWW.OBEYCLOTHING.COM
WWW.OBEYGIANT.COM