



**OBEY**

Holiday 2023



The OBEY campaign can be explained as an experiment in phenomenology. The first aim of phenomenology is to reawaken a sense of wonder about one's environment. The OBEY campaign attempts to stimulate curiosity and bring people to question both the campaign and their relationship with their surroundings. Because people are not used to seeing advertisements or propaganda for which the motive is not obvious, frequent and novel encounters with OBEY propaganda provoke thought and possible frustration, nevertheless revitalizing the viewer's perception and attention to detail. To catalyze a thoughtful dialogue deconstructing the process of image absorption is the ultimate goal. All in the name of fun and observation.

The medium is the message.

# HISTORY

## 1989

OG sticker – What started as a joke, became an obsession. First showing up in Providence, Rhode Island, the image quickly spread down the east coast and beyond. To date, over ten million stickers have been proliferated worldwide.

## 1990

OBEY Campaign - Inspired by John Carpenter's cult classic film *They Live*, the slogan OBEY was adopted to accompany the image. "It was totally campy, but I really liked the subversive elements of it, how people are slaves to consumerism because everything is glossy on the surface."

## 1995

OBEY Icon Face - Shepard stylizes the icon face evolving away from the OG sticker. Influenced by George Orwell's "Big Brother" image, the streamlined graphic approach of the Russian Constructivist poster, and Barbara Kruger's use of font and color, a new phase of the story emerges.

## 1995

Subliminal Projects – A multi-functional project space and gallery established by Shepard, skateboarder Blaize Blouin, and designer and DJ Alfred Hawkins as a way to introduce skateboard culture and design to the art world. Established on the east coast but eventually settling in LA, Subliminal Projects remains a space that champions emerging artists.

## 1996

East to West – Shepard Fairey closes screen printing shop in Providence, Rhode Island, and moves to San Diego, California to pursue graphic design and art.

## 1998

Burgeoning gallery career - Shepard's work begins to receive recognition on larger scale. Street art begins to build relevance amongst fans and collectors, opening up avenues in fine art galleries and other outlets.

## 2000

OBEY Clothing - Making OBEY T-shirts throughout his career, Shepard partners to expand the reach of his images on clothing. As a populist in nature, the idea to spread his message further through a new medium is launched.

## 2003

Studio Number One is founded by Shepard and Amanda Fairey – Deeply embedded with Fairey's DNA, Studio Number One design studio challenges how people think about their surroundings through bold marketing and advertising

# HISTORY

## 2004

Swindle Magazine - Partnering with Roger Gastman, the magazine featured pop culture and lifestyle content around music, fashion, and the arts. Covers included the likes of Henry Rollins, Banksy, Twist, and more.

## 2006

Supply & Demand: The Art of Shepard Fairey is published, a retrospective look at Shepard's career to that point. In its third printing, the book covers his work to date in addition to essays and commentary from Fairey's contemporaries and those around in the early years.

## 2007

OBEY Awareness - OBEY Clothing launches the Awareness Campaign supporting non-profits through the production of T-shirts and donation of funds to organizations that fit the ideals and messaging of the brand.

## 2008

HOPE Poster – Motivated by his own civic responsibility, Shepard uses his skills to create a poster illustration of then-presidential candidate Barack Obama with the word HOPE underneath. The image becomes the predominately recognized image of the campaign, eventually being inducted into the National Portrait Gallery in Washington.

## 2010

Mayday – The final gallery show at Deitch Projects in Lower Manhattan, Mayday was an exhibition of primarily portraits of revolutionaries in the way of artists, musicians, and political activists.

## 2010

Exit Through The Giftshop – Shepard is heavily featured in the documentary by his friend, renowned street artist, Banksy. The film anchors street art in the culture of the day.

## 2015

OBEY Clothing Ideals – wanting to improve its oversight in sourcing and manufacturing, OBEY Clothing starts working with Fair Trade in addition to resourcing more organic, recycled and sustainable product through materials and transport. As an ongoing mission to improve, Ideals is an open-ended project that evolves as new opportunities become available. (2021 GOTS certification).

## 2017

We The People, Women's March – In collaboration with Amplifier, Shepard creates iconic protest art with messages including "Defend Dignity," "Greater Than Fear," and "Protect Each Other" celebrating and lifting up marginalized people.

## **HISTORY**

### **2017**

OBEY Giant Documentary - Hulu releases a documentary film, OBEY Giant: The Art and Dissent of Shepard Fairey on the life and career of Shepard, spanning the nearly 30 years of his career.

### **2017**

DAMAGED - In conjunction with Library Street Collective, the DAMAGED exhibition launches in LA. The show focuses primarily on critical issues in society. As Shepard states, "DAMAGED is an honest diagnosis, but diagnosis is the first step to recognizing and solving problems."

### **2019**

Facing The Giant – 3 Decades of Dissent celebrates 30 Years of OBEY. The show highlights a number of distinct works from each of the 3 decades of Shepard's OBEY art campaign repurposed or offered in a new format.

### **2019**

100th Mural – Shepard completes his 100th mural in Providence, Rhode Island. Creativity, Equality, Justice is completed with support and inspiration from non-profit artist space AS220.



This icon indicates that this garment is unisex.



This icon indicates that this garment is constructed sustainably. More than just sustainable raw materials, we consider the social environment, and economic impact of its production.



This icon indicates that this garment is constructed with organic cotton. Certified organic cotton following strict regulations without the use of GMO's harmful pesticides, or synthetic fertilizers.



Fair Trade USA's Fair Trade Certified™ label empowers you, the consumer, with the knowledge that your purchase has a positive impact on the people who sew and grow the products you love.

For every OBEY Fair Trade Certified™ product sold, a percentage is paid directly to a special fund for the workers that create our goods. They decide collectively how to spend these funds based on their communities greatest needs: from scholarships, school buses, to medical care, disaster and relief services.



This icon indicates that this garment is constructed with recycled materials. Per t-shirt, 1.6 recycled plastic bottles and .10lbs of recycled cotton are used.

Reduce, Reuse, Recycle!



This icon indicates that this garment is GOTS certified. This product is sustainably sourced from seed to finished product, through environmentally and socially responsible manufacturing, and is certified by Global Organic Textile Standard.

# TABLE OF CONTENTS

---

## HOLIDAY 2023

### DELIVERY 1

8  
SHEPARD FAIREY COLLECTION

19  
ICON COLLECTION

24  
JACKETS / SHACKETS

30  
PREMIUM FLEECE  
OUTERWEAR

34  
SWEATERS

37  
TOPS

45  
FLEECE

49  
ASSORTED BOTTOMS

54  
BIG TIMER BOTTOMS

57  
EASY ELASTIC BOTTOMS

60  
DENIM COLLECTION

66  
BIGWIG COLLECTION

71  
PIGMENT COLLECTION

76  
HEADWEAR

88  
BAGS

92  
SOCKS

95  
ACCESSORIES

101  
CORE PRINTABLES

109  
LIFESTYLE PRINTABLES

122  
SUSTAINABLE PRINTABLES



# SHEPARD FAIREY COLLECTION



# SHEPARD FAIREY

ARTIST - ACTIVIST

Shepard Fairey, founder of OBEY and OBEY Clothing, was born in Charleston, South Carolina. He received his Bachelor of Fine Arts in Illustration at the Rhode Island School of Design in Providence, Rhode Island. In 1989 he created the "Andre the Giant has a Posse" sticker that transformed into the OBEY GIANT art campaign, with imagery that has changed the way people see art and the urban landscape. After 29 years, his work has evolved into an acclaimed body of art, which includes the 2008 "Hope" portrait of Barack Obama, found at the Smithsonian's National Portrait Gallery. The artist collaborated with Amplifier in 2017 to create the We The People series recognizable during the Women's Marches and other rallies around the world in defense of national and global social justice issues.

Fairey's stickers, guerilla street art presence, and 85 plus public murals are recognizable worldwide. His works are in the permanent collections of the Museum of Modern Art (MoMA), the Victoria and Albert Museum, the Smithsonian's National Portrait Gallery, the Boston Institute of Contemporary Art, the San Francisco Museum of Modern Art, and many others.

Fairey's distinct and recognizable style is unique to him and to OBEY. His lifestyle is the catalyst for all the brand does and the center point of influence and inspiration. This section isolates his work, from his classic graphic style to fine art renderings on garments. Each season, Shepard tackles new ideas and adds his special touch that makes OBEY what it is.

We hope you enjoy.

**OBEY ICON PHOTO**

**165263622**

DESCRIPTION: CLASSIC FIT T-SHIRT

CONTENT: 100% COTTON

BLACK, FOREST GREEN, DIGITAL LAVENDER, WHITE

S M L XL XXL



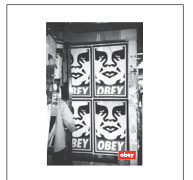
BLACK



FOREST GREEN



DIGITAL LAVENDER



WHITE

D1 - SHEPARD FAIREY COLLECTION - CLASSIC TEE

**OBEY SURVEILLANCE**

**165263621**

DESCRIPTION: CLASSIC FIT T-SHIRT

CONTENT: 100% COTTON

SILT, BLACK, GOOD GREY, WHITE

S M L XL XXL



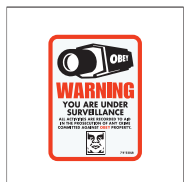
SILT



BLACK



GOOD GREY



WHITE

D1 - SHEPARD FAIREY COLLECTION - CLASSIC TEE

**OBEY BUILDING**

**165263623**

DESCRIPTION: CLASSIC FIT T-SHIRT

CONTENT: 100% COTTON

BROWN SUGAR, BLACK, CREAM, WHITE

S M L XL XXL



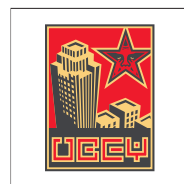
BROWN SUGAR



BLACK



CREAM



WHITE

D1 - SHEPARD FAIREY COLLECTION - CLASSIC TEE

**OBEY SEIZE FIRE**

**165263625**

DESCRIPTION: CLASSIC FIT T-SHIRT

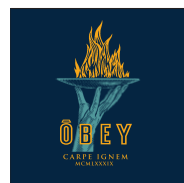
CONTENT: 100% COTTON

BLACK, NAVY, DIGITAL LAVENDER, WHITE

S M L XL XXL



BLACK



NAVY



DIGITAL LAVENDER



WHITE

D1 - SHEPARD FAIREY COLLECTION - CLASSIC TEE

**OBEY SEARCH & DESTROY TIGER**

**165263624**

DESCRIPTION: CLASSIC FIT T-SHIRT

CONTENT: 100% COTTON

BLACK, FOREST GREEN, CREAM, WHITE

S M L XL XXL



BLACK



FOREST GREEN



CREAM



WHITE

D1 - SHEPARD FAIREY COLLECTION - CLASSIC TEE

**OBEY MANIFEST PEACE**

**165263626**

DESCRIPTION: CLASSIC FIT T-SHIRT

CONTENT: 100% COTTON

WHITE, BLACK, SILT, CREAM

S M L XL XXL



WHITE



BLACK



SILT



CREAM

D1 - SHEPARD FAIREY COLLECTION - CLASSIC TEE

**OBEY ICON PHOTO**

**163003622**

DESCRIPTION: ORGANIC TEE

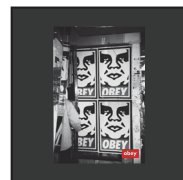
CONTENT: 100% ORGANIC COTTON

SKY AZURE, FADED BLACK, SEPIA

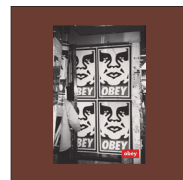
XS S M L XL XXL



SKY AZURE



FADED BLACK



SEPIA

D1 - SHEPARD FAIREY COLLECTION - ORGANIC TEE

**OBEY SURVEILLANCE**

**163003621**

DESCRIPTION: ORGANIC TEE

CONTENT: 100% ORGANIC COTTON

FADED BLACK, SEPIA, ADVENTURE GREEN

XS S M L XL XXL



FADED BLACK



SEPIA



ADVENTURE GREEN

D1 - SHEPARD FAIREY COLLECTION - ORGANIC TEE

**OBEY BUILDING**

**163003623**

DESCRIPTION: ORGANIC TEE

CONTENT: 100% ORGANIC COTTON

ADVENTURE GREEN, FADED BLACK, SAGO

XS S M L XL XXL



ADVENTURE GREEN



FADED BLACK



SAGO

D1 - SHEPARD FAIREY COLLECTION - ORGANIC TEE

**OBEY SEIZE FIRE**

**163003625**

DESCRIPTION: ORGANIC TEE

CONTENT: 100% ORGANIC COTTON

SAGO, FADED BLACK, DIGITAL LAVENDER

XS S M L XL XXL



SAGO



FADED BLACK



DIGITAL LAVENDER

D1 - SHEPARD FAIREY COLLECTION - ORGANIC TEE

**OBEY SEARCH & DESTROY TIGER**

**163003624**

DESCRIPTION: ORGANIC TEE

CONTENT: 100% ORGANIC COTTON

DEEP LAGOON, FADED BLACK, SAGO

XS S M L XL XXL



DEEP LAGOON



FADED BLACK



SAGO

D1 - SHEPARD FAIREY COLLECTION - ORGANIC TEE

**OBEY MANIFEST PEACE**

**163003626**

DESCRIPTION: ORGANIC TEE

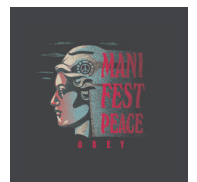
CONTENT: 100% ORGANIC COTTON

SAGO, FADED BLACK, CORK

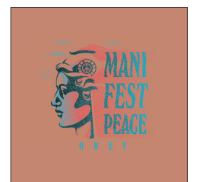
XS S M L XL XXL



SAGO



FADED BLACK



CORK

D1 - SHEPARD FAIREY COLLECTION - ORGANIC TEE

**OBEY ICON PHOTO**

**112843622**

DESCRIPTION: PREMIUM FLEECE HOOD

CONTENT: 58% COTTON 42% POLYESTER

BLACK, SEPIA

XS S M L XL XXL



BLACK



SEPIA

D1 - SHEPARD FAIREY COLLECTION - PREMIUM HOOD

**OBEY SEIZE FIRE**

**112843625**

DESCRIPTION: PREMIUM FLEECE HOOD

CONTENT: 58% COTTON 42% POLYESTER

DIGITAL LAVENDER, BLACK

XS S M L XL XXL



DIGITAL LAVENDER



BLACK

D1 - SHEPARD FAIREY COLLECTION - PREMIUM HOOD



**BASTARDS LEATHER JACKET**

**121800233**

DESCRIPTION: MOTORCYCLE REAL LEATHER JACKET WITH SILVER HARDWARE

CONTENT: 100% LEATHER

BLACK

S M L XL XXL



BLACK

SHEPARD FAIREY COLLECTION - ESSENTIALS

**BASTARDS PU JACKET**

**121800239**

DESCRIPTION: PU LEATHER MOTORCYCLE JACKET WITH SILVER HARDWARE

CONTENT: 100% PU LEATHER

BLACK

S M L XL XXL



BLACK

SHEPARD FAIREY COLLECTION - ESSENTIALS

**OBEY ICON PHOTO**

**100553622**

DESCRIPTION: JUMBO TOTE BAG

CONTENT: 100% COTTON

BLACK, CREAM

O/S



BLACK



CREAM

SHEPARD FAIREY COLLECTION - ESSENTIALS

**COVERT TO OVERT BOOK**

**326000035M**

DESCRIPTION: COVERT TO OVERT SHOWCASES SHEPARD FAIREY'S EVOLUTION FROM WORKS ON PAPER TO GRANDER ART INSTALLATIONS, CROSS-CULTURAL WORKS, AND MUSIC/ART COLLABORATIONS

ASSORTED

O/S



ASSORTED

SHEPARD FAIREY COLLECTION - ESSENTIALS

# ICON COLLECTION



FALL 2023 | HOLIDAY 2023

The OBEY Icon Collection represents the origins and iconography of OBEY from the past, to the present. This collection is embellished with the classic OBEY Icon Face that is a highly recognized image in streets and cities worldwide. This icon and its use in OBEY clothing represents and symbolizes the spirit of creativity, rebellion, and a question everything attitude. This collection of apparel is meant to celebrate our roots as a brand and a movement while also letting the OBEY Icon Face tear through the visual chaos of cities around the world.

The Medium is The Message

**ICON EXTRA HEAVY HOOD II**

**112470196**

FIT: REGULAR FIT

DESCRIPTION: EXTRA HEAVY WEIGHT HOODED FLEECE WITH EMBROIDERY

70% COTTON 30% POLYESTER

BLACK, SILVER GREY, SEPIA, PASSION FLOWER

XS S M L XL XXL



BLACK



SILVER GREY



SEPIA



PASSION FLOWER

D1 - ICON COLLECTION

**ICON EXTRA HEAVY CREW II**

**112480139**

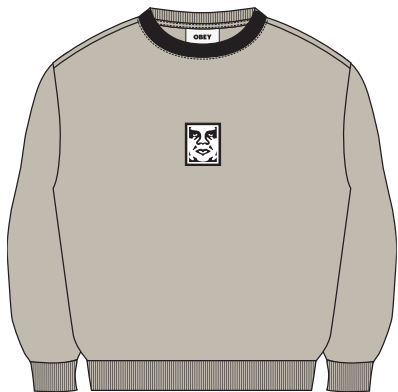
FIT: BOXY FIT

DESCRIPTION: EXTRA HEAVY WEIGHT CREW FLEECE WITH EMBROIDERY

70% COTTON 30% POLYESTER

SILVER GREY, BLACK, DARK CEDAR

XS S M L XL XXL



SILVER GREY



BLACK



DARK CEDAR

D1 - ICON COLLECTION

**ICON HEAVYWEIGHT TEE**

**166913013**

DESCRIPTION: HEAVYWEIGHT BOX FIT T-SHIRT

CONTENT: 100% COTTON

SEPIA, OFF BLACK, MULBERRY PURPLE, SILVER GREY

**S M L XL XXL**



SEPIA



OFF BLACK



MULBERRY PURPLE



SILVER GREY

D1 - ICON COLLECTION

**OBEY BOLD ICON HEAVYWEIGHT TEE**

**166913439**

DESCRIPTION: HEAVYWEIGHT BOX FIT T-SHIRT

CONTENT: 100% COTTON

SILVER GREY, OFF BLACK, DIGITAL LAVENDER, WHITE

**S M L XL XXL**



SILVER GREY



OFF BLACK



DIGITAL LAVENDER



WHITE

D1 - ICON COLLECTION

**ICON PATCH 6 PANEL STRAPBACK**

**100580303**

FIT: CLASSIC FIT

DESCRIPTION: 6 PANEL STRAPBACK WITH OBEY ICON PATCH

100% COTTON

BLACK, ARMY, SILVER GREY

O/S



ARMY



SILVER GREY

BLACK

D1 - ICON COLLECTION

**ICON PATCH CAMP HAT**

**100149101**

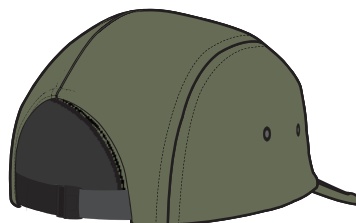
FIT: CLASSIC FIT

DESCRIPTION: NYLON CAMP CAP WITH OBEY PATCH

100% NYLON

ARMY, BLACK, SILVER GREY

O/S



BLACK



SILVER GREY

ARMY

D1 - ICON COLLECTION

**MID ICON PATCH CUFF BEANIE**

**100030195**

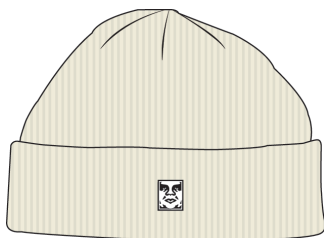
FIT: CLASSIC FIT

DESCRIPTION: MID BEANIE WITH OBEY PATCH

100% ACRYLIC

UNBLEACHED, BLACK, ARMY

O/S



UNBLEACHED



BLACK



ARMY

D1 - ICON COLLECTION

**ICON PATCH CUFF BEANIE**

**100030198**

FIT: CLASSIC FIT

DESCRIPTION: CUFF BEANIE WITH OBEY PATCH

100% ACRYLIC

PASSION FLOWER, BLACK, ARMY, UNBLEACHED

O/S



PASSION FLOWER



BLACK



ARMY



UNBLEACHED

D1 - ICON COLLECTION



**JACKETS  
+  
SHACKETS**



김두천  
비뇨기과  
피부과

미동행  
대한불교  
조계종  
불심선원

한식부동산  
예약문의 3152-5970

제일랜드

인민중개사 사무소  
7-303-4100  
신동빌라 1층 101호에 위치해 고객님들께 친절합니다



**WIZARD VARSITY JACKET**

**121800551**

FIT: REGULAR FIT

DESCRIPTION: WOOL VARSITY JACKET WITH OBEY APPLIQUE

52% POLYESTER, 45% WOOL, 2% VISCOSE 1% NYLON

EDEN, BLACK

**XS S M L XL XXL**



BLACK

EDEN

D1 - JACKETS / SHACKETS

**PAISLEY SHERPA JACKET**

**121800550**

FIT: RELAXED FIT

DESCRIPTION: SHERPA JACKET WITH PATCH POCKETS

100% POLYESTER

UNBLEACHED MULTI, SEPIA MULTI

**S M L XL XXL**



SEPIA MULTI

UNBLEACHED MULTI

D1 - JACKETS / SHACKETS

**HARLEM CORD JACKET**

**121800553**

FIT: REGULAR FIT

DESCRIPTION: INSULATED PLAID CORDUROY JACKET

100% COTTON

BROWN MULTI, KOMBU GREEN MULTI

XS S M L XL XXL



KOMBU GREEN MULTI

BROWN MULTI

D1 - JACKETS / SHACKETS

**RETREAT HOODED JACKET**

**121800547**

FIT: RELAXED FIT

DESCRIPTION: INSULATED HOODED JACKET

100% POLYESTER

BLACK, JAVA BROWN

S M L XL XXL



JAVA BROWN

BLACK

D1 - JACKETS / SHACKETS

**STUDIO MOCK NECK ANORAK**

**121800544**

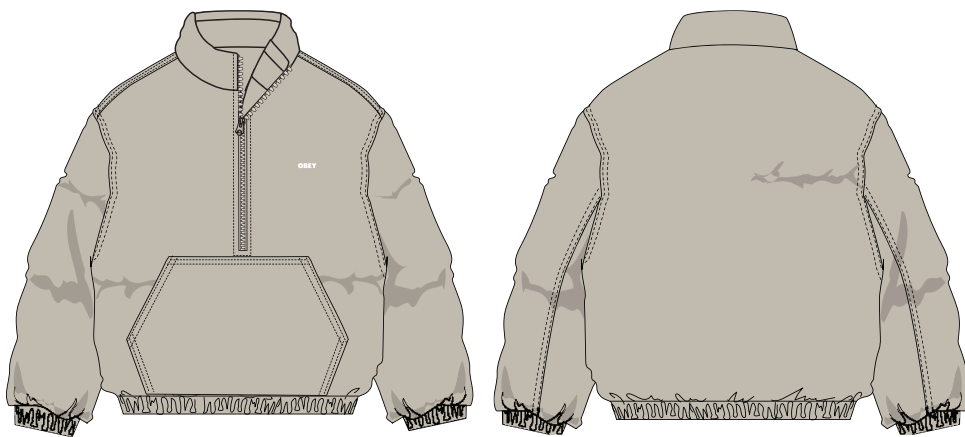
FIT: RELAXED FIT

DESCRIPTION: POP OVER INSULATED ANORAK

100% POLYESTER

SILVER GREY, BLACK

S M L XL XXL



SILVER GREY



BLACK

D1 - JACKETS / SHACKETS

**CHARLIE JACKET**

**121800546**

FIT: REGULAR FIT

DESCRIPTION: QUILTED PUFFER WITH LOGO PRINT

100% NYLON

BLACK, SEPIA, SILVER GRAY MULTI

XS S M L XL XXL



BLACK



SEPIA



SILVER GRAY MULTI

D1 - JACKETS / SHACKETS

**WHISPERS JACKET**

**121800548**

FIT: RELAXED FIT

DESCRIPTION: CORDUROY COLLAR PUFFER JACKET

100% POLYESTER

GREEN GABLES MULTI, FEATHER GREY MULTI

**S M L XL XXL**



FEATHER GREY MULTI

GREEN GABLES MULTI

D1 - JACKETS / SHACKETS

**GRAND CORD SHIRT JACKET**

**121160051**

FIT: REGULAR FIT

DESCRIPTION: INSULATED CORDUROY SHIRT JACKET

100% COTTON

CATECHU WOOD, DARK CEDAR

**S M L XL XXL**



DARK CEDAR

CATECHU WOOD

D1 - JACKETS / SHACKETS

**BENNY CORD SHIRT JACKET**

**121160050**

FIT: REGULAR FIT

DESCRIPTION: CORDUROY SHIRT JACKET

100% COTTON

DARK CEDAR, IRISH CREAM

**S M L XL XXL**



DARK CEDAR



IRISH CREAM

D1 - JACKETS / SHACKETS



**PREMIUM  
FLEECE  
OUTERWEAR**

**ETCH EXTRA HEAVY HOOD**

**112470198**

FIT: REGULAR FIT

DESCRIPTION: EXTRA HEAVY WEIGHT HOODED FLEECE WITH EMBROIDERY

70% COTTON 30% POLYESTER

BLACK, SEPIA

XS S M L XL XXL



BLACK



SEPIA

D1 - PREMIUM FLEECE OUTERWEAR

**DAILY POLAR FLEECE HOOD**

**112470192**

FIT: REGULAR FIT

DESCRIPTION: POLAR FLEECE HOOD WITH OBEY EMBROIDERY

100% POLYESTER

DIGITAL LAVENDER, BLACK

S M L XL XXL



DIGITAL LAVENDER



BLACK

D1 - PREMIUM FLEECE OUTERWEAR

**CANAL SHIRT JACKET**

**121160046**

FIT: REGULAR FIT

DESCRIPTION: POLAR FLEECE SHIRT JACKET WITH CF ZIPPER CLOSURE

100% POLYESTER

AVENTURINE GREEN, SEPIA

S M L XL XXL



AVENTURINE GREEN



SEPIA

D1 - PREMIUM FLEECE OUTERWEAR

**BOLD POLAR FLEECE HOOD**

**112470193**

FIT: REGULAR FIT

DESCRIPTION: POLAR FLEECE HOOD WITH OBEY EMBROIDERY

100% POLYESTER

SILVER GREY, BLACK, DIGITAL LAVENDER

S M L XL XXL



SILVER GREY



BLACK



DIGITAL LAVENDER

D1 - PREMIUM FLEECE OUTERWEAR



**GAZE II HOODED JACKET**

**121800542**

FIT: OVERSIZED FIT

DESCRIPTION: HOODED ZIP JACKET

100% POLYESTER

JAVA BROWN, BLACK, SILVER GREY

**S M L XL XXL**



JAVA BROWN



BLACK



SILVER GREY

D1 - PREMIUM FLEECE OUTERWEAR

# SWEATERS



**LUKA SPLATTER CARDIGAN**

**151010033**

FIT: REGULAR FIT

DESCRIPTION: BRUSHED PATTERN CARDIGAN

100% ACRYLIC

JAVA BROWN MULTI, SILVER GREY MULTI

**S M L XL XXL**



SILVER GREY MULTI

JAVA BROWN MULTI

D1 - SWEATERS

**AMIR SWEATER VEST**

**151000071**

FIT: REGULAR FIT

DESCRIPTION: INTARSIA SWEATER VEST

70% ACRYLIC 30% WOOL

UNBLEACHED MULTI, CATECHU WOOD MULTI

**S M L XL XXL**



CATECHU WOOD MULTI

UNBLEACHED MULTI

D1 - SWEATERS

**DOMINIC SWEATER**

**15100076**

FIT: REGULAR FIT

DESCRIPTION: CHUNKY MIXED YARN SWEATER

80% ACRYLIC 20% WOOL

CATECHU WOOD MULTI

**S M L XL XXL**



SILVER GREY MULTI

CATECHU WOOD MULTI

D1 - SWEATERS

**CARTER SWEATER POLO**

**15100075**

FIT: REGULAR FIT

DESCRIPTION: PATCHWORK POLO SWEATER

80% ACRYLIC 20% WOOL

BLACK MULTI, BROWN MULTI

**S M L XL XXL**



BROWN MULTI

BLACK MULTI

D1 - SWEATERS



**TOPS**

**TERRACE WOVEN**

**181200385**

FIT: REGULAR FIT

DESCRIPTION: PLAID LS WOVEN WITH EMBROIDERY

100% COTTON

ICEBERG GREEN MULTI, PURPLE ROSE MULTI

S M L XL XXL



ICEBERG GREEN MULTI



PURPLE ROSE MULTI

D1 - TOPS

**ADRIAN CORD WOVEN**

**181200380**

FIT: REGULAR FIT

DESCRIPTION: CORDUROY PLAID LS WOVEN

100% COTTON

UNBLEACHED MULTI, LAVENDER FROST MULTI

S M L XL XXL



UNBLEACHED MULTI



LAVENDER FROST MULTI

D1 - TOPS

**RAY WOVEN**

**181200383**

FIT: REGULAR FIT

DESCRIPTION: EXTRA HEAVY WEIGHT PLAID LS WOVEN

100% COTTON

WINEBERRY MULTI, ACADEMY NAVY MULTI

S M L XL XXL



ACADEMY NAVY MULTI

WINEBERRY MULTI

D1 - TOPS

**BOBBY WOVEN**

**181200381**

FIT: REGULAR FIT

DESCRIPTION: WAFFLE LS WOVEN WITH OBEY EMBROIDERY

100% COTTON

AVENTURINE GREEN, SILVER GREY

S M L XL XXL



SILVER GREY

AVENTURINE GREEN

D1 - TOPS

**SANTO WOVEN**

**181200384**

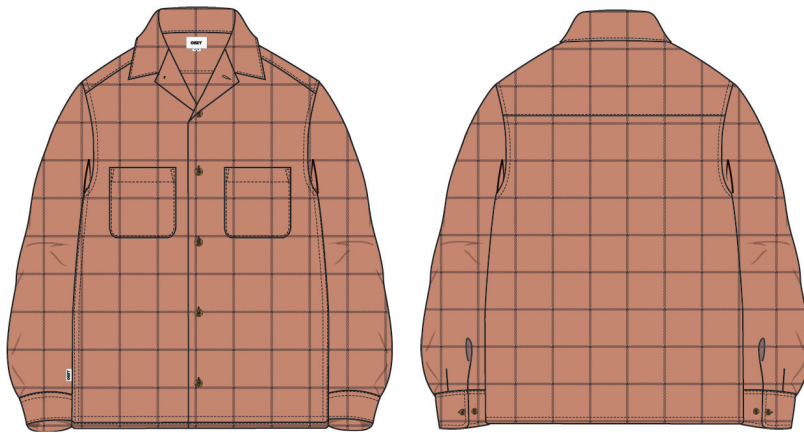
FIT: REGULAR FIT

DESCRIPTION: PLAID LS WOVEN

100% COTTON

CORK MULTI, BLACK MULTI

S M L XL XXL



BLACK MULTI

CORK MULTI

D1 - TOPS

**PERCY WOVEN**

**181200382**

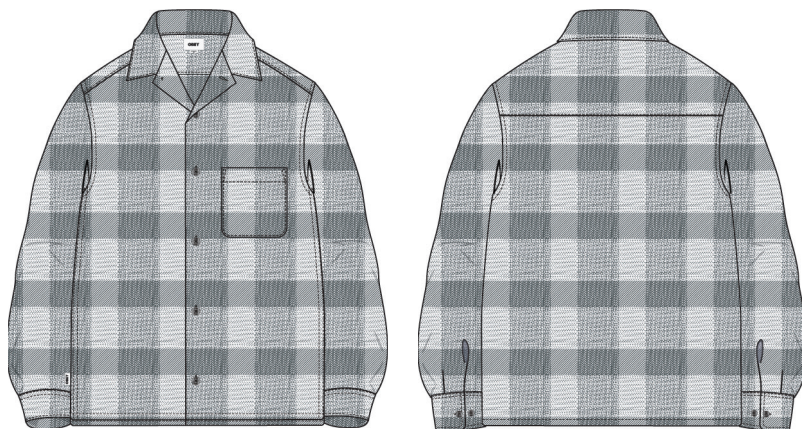
FIT: REGULAR FIT

DESCRIPTION: PLAID LS WOVEN

100% COTTON

GREY MULTI, IRISH CREAM MULTI

S M L XL XXL



IRISH CREAM MULTI

GREY MULTI

D1 - TOPS



**BYRON STRIPE LS**

**131030131**

FIT: REGULAR FIT

DESCRIPTION: LONG SLEEVE STRIPE TEE WITH OBEY EMBROIDERY

100% COTTON

ACADEMY NAVY MULTI, SEPIA MULTI

S M L XL XXL



SEPIA MULTI

ACADEMY NAVY MULTI

D1 - TOPS

**HOLSTIEN VELOUR POLO LS**

**131040053**

FIT: REGULAR FIT

DESCRIPTION: LONG SLEEVE VELOUR POLO WITH OBEY EMBROIDERY

80% COTTON 20% POLYESTER

SEPIA MULTI, AVENTURINE GREEN MULTI

S M L XL XXL



AVENTURINE GREEN MULTI

SEPIA MULTI

D1 - TOPS

**CAPRI JACQUARD POLO LS**

**131040055**

FIT: REGULAR FIT

DESCRIPTION: LONG SLEEVE JACQUARD POLO WITH OBEY EMBROIDERY

100% COTTON

BLACK MULTI, UNBLEACHED MULTI

S M L XL XXL



UNBLEACHED MULTI

BLACK MULTI

D1 - TOPS

**PEST JACQUARD POLO LS**

**131040054**

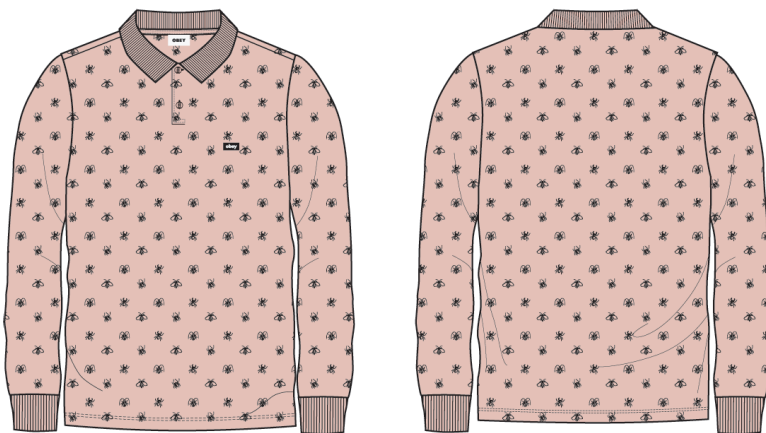
FIT: REGULAR FIT

DESCRIPTION: LONG SLEEVE JACQUARD POLO WITH OBEY LABEL

100% COTTON

PEACH WHIP MULTI, BLACK MULTI

S M L XL XXL



BLACK MULTI

PEACH WHIP MULTI

D1 - TOPS

**GENERATION THERMAL LS**

**131030130**

FIT: REGULAR FIT

DESCRIPTION: LONG SLEEVE THERMAL WITH OBEY EMBROIDERY

100% COTTON

DIGITAL BLACK, UNBLEACHED

S M L XL XXL



DIGITAL BLACK



UNBLEACHED

D1 - TOPS

**DEVIL RINGER TEE SS**

**131080352**

FIT: REGULAR FIT

DESCRIPTION: SHORT SLEEVE RINGER TEE W. OBEY EMBROIDERY

100% COTTON

WHITE MULTI, SEPIA MULTI

S M L XL XXL



WHITE MULTI



SEPIA MULTI

D1 - TOPS

**POINT POCKET TEE SS**

**131080287**

FIT: REGULAR FIT

DESCRIPTION: CREW NECK POCKET TEE WITH OBEY LABEL

100% ORGANIC COTTON

BLACK, WHITE

S M L XL XXL



BLACK



WHITE

D1 - TOPS



DAVID JORDAN SET THE MOOD

DEBUT ALBUM  
RELEASED 5th NOVEMBER

www.davidjordan.com

EMI

# FLEECE

CLEARCHANNEL



**SATELLITE 51**

BRITAIN'S MOST INFLUENTIAL

FRANK DVOID (Surreal)  
 A-SAY (Electronic)  
 PAUL KIDMAN (Surreal)  
 TRON (Electronic)  
 PAULO JARDIM (Folkworld - Brazil)  
 TIANA VON PEAR  
 LANA FELSKY  
 RICK MALIA

FREE PIRELLA GÖTTSCHE LOWE

www.ooz.co.uk

**OBEY LOWERCASE HOOD**

**112470162**

FIT: REGULAR FIT

DESCRIPTION: FLEECE HOOD WITH LOGO EMBROIDERY

58% COTTON 42% POLYESTER

SILVER GREY, BLACK, SEPIA

XS S M L XL XXL



SILVER GREY



BLACK



SEPIA

D1 - SPECIALTY FLEECE

**OBEY LOWER CASE CREW**

**112480125**

FIT: REGULAR FIT

DESCRIPTION: FLEECE CREW WITH LOGO EMBROIDERY

58% COTTON 42% POLYESTER

BLACK, SEPIA, UNBLEACHED

XS S M L XL XXL



BLACK



SEPIA



UNBLEACHED

D1 - SPECIALTY FLEECE

**ICON EMBROIDERED HOOD**

**112470202**

FIT: REGULAR FIT

DESCRIPTION: FLEECE HOOD WITH LOGO EMBROIDERY

58% COTTON 42% POLYESTER

UNBLEACHED, BLACK, AVENTURINE GREEN

XS S M L XL XXL



UNBLEACHED



BLACK



AVENTURINE GREEN

D1 - SPECIALTY FLEECE

**OBEY RECORDS CREW**

**112480141**

FIT: REGULAR FIT

DESCRIPTION: FLEECE CREW WITH LOGO EMBROIDERY

58% COTTON 42% POLYESTER

ACADEMY NAVY, SILVER GREY

XS S M L XL XXL



ACADEMY NAVY



SILVER GREY

D1 - SPECIALTY FLEECE

**LIAM POLO SWEATSHIRT LS**

**111620089**

FIT: REGULAR FIT

DESCRIPTION: POLO SWEATSHIRT WITH OBEY EMBROIDERY

100% COTTON

DEEP LAGOON MULTI, ACADEMY NAVY MULTI

**S M L XL XXL**



DEEP LAGOON MULTI



ACADEMY NAVY MULTI

D1 - SPECIALTY FLEECE



NO IDLING  
CHAPTER 517  
1 MIN  
IDLE LIMIT  
IDLING POLLUTES AND IS ILLEGAL

OBEDIENCE



OBEDIENCE

**ASSORTED  
BOTTOMS**

NEIGHBORHOOD  
WHAT COULD



7AM - 10AM

**STRAGGLER FLOODED PANT**

**142020113**

FIT: STANDARD FIT

DESCRIPTION: FLOODED PANT

60% COTTON 39% POLYESTER 1% SPANDEX

BLACK, SEPIA BROWN, LEAF

26 27 28 29 30 31 32 33 34 36 38



BLACK



SEPIA BROWN



LEAF

D1 - BOTTOMS

**STRAGGLER PANT**

**142020150**

FIT: STANDARD FIT

DESCRIPTION: STRAIGHT LEG PANT

60% COTTON 39% POLYESTER 1% SPANDEX

SEPIA BROWN, BLACK, LEAF

26 27 28 29 30 31 32 33 34 36 38



SEPIA BROWN



BLACK



LEAF

D1 - BOTTOMS

**HUGHES TWILL PANT**

**142020198**

FIT: REGULAR FIT

DESCRIPTION: CASUAL TWILL PANT

100% COTTON

DULL BLUE, BLACK, FIELD GREEN

26 27 28 29 30 31 32 33 34 36 38



DULL BLUE



BLACK



FIELD GREEN

D1 - BOTTOMS

**HARDWORK CARPENTER PANT**

**142020184**

FIT: REGULAR FIT

DESCRIPTION: CARPENTER PANT

100% COTTON

DARK BROWN, BLACK, WHITE

26 27 28 29 30 31 32 33 34 36 38



DARK BROWN



BLACK



WHITE

D1 - BOTTOMS

**ESTATE PANT**

**142020183**

FIT: RELAXED FIT

DESCRIPTION: HEAVYWEIGHT TWILL PANT WITH SINGLE PLEAT FRONT

100% COTTON

SILVER PINE, BLACK, DARK BROWN, IRISH CREAM

26 27 28 29 30 31 32 33 34 36 38



SILVER PINE



BLACK



DARK BROWN



IRISH CREAM

D1 - BOTTOMS

**FUBAR PLEATED PANT**

**142020201**

FIT: RELAXED FIT

DESCRIPTION: RELAXED FIT PLEATED PANTS

60% POLYESTER 40% RAYON

BLACK, ROSIN, SEPIA

26 27 28 29 30 31 32 33 34 36 38



BLACK



ROSIN



SEPIA

D1 - BOTTOMS

**FUBAR PLEATED PLAID CORD PANT**

**142020220**

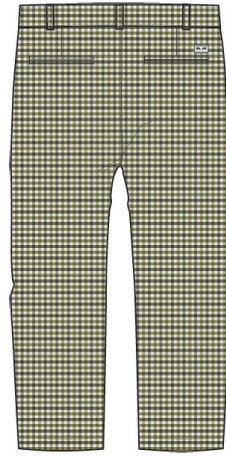
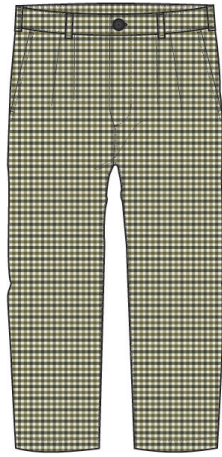
FIT: RELAXED FIT

DESCRIPTION: RELAXED FIT PLEATED PLAID CORDUROY PANTS

100% COTTON

KOMBU GREEN MULTI, BROWN MULTI

26 27 28 29 30 31 32 33 34 36 38



BROWN MULTI

KOMBU GREEN MULTI

D1 - BOTTOMS



DAVID JORDAN SET THE MOOD



DEBUT ALBUM  
RELEASED 5th NOVEMBER

www.davidjordan.com



CLEARCHANNEL

# BIG TIMER BOTTOMS

**SATELLITE**  
51

- FRANK DVOID (Surreal)
- Alex (Acoustic)
- PAUL JORDAN (Surreal)
- TRON (Acoustic)
- PAULO JARDIM (Acoustic)

FRANK  
TANIA VON PEAR  
LANA FELSKY  
RICK MALIA

FRANK DVOID WAS SUPRAMAN  
FRANK DVOID WAS SUPRAMAN  
FRANK DVOID WAS SUPRAMAN

www.EMI.com

**BIG TIMER TWILL DOUBLE KNEE CARPENTER PANT**

**142020211**

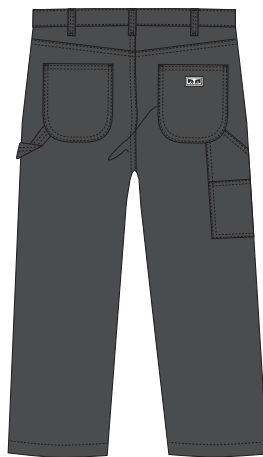
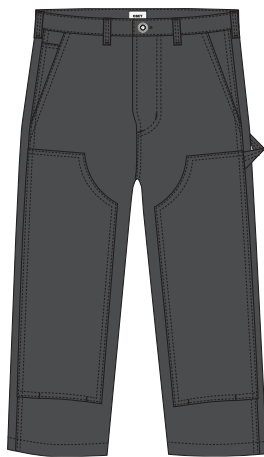
FIT: RELAXED FIT

DESCRIPTION: DOUBLE KNEE WORK PANTS WITH PATCH POCKETS

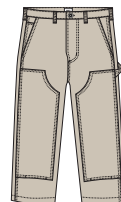
100% COTTON

BLACK, JAVA BROWN, CLAY

26 27 28 29 30 31 32 33 34 36 38



JAVA BROWN



CLAY

BLACK

D1 - BOTTOMS

**BIG TIMER CORD PANT**

**142020205**

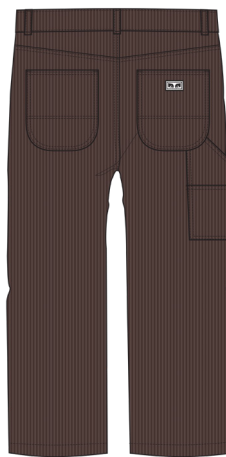
FIT: RELAXED FIT

DESCRIPTION: CORDUROY DOUBLE KNEE WORK PANT

100% COTTON

JAVA BROWN, IRISH CREAM

28 29 30 31 32 33 34 36 38



IRISH CREAM

JAVA BROWN

D1 - BOTTOMS

**BIG TIMER CARGO PANT**

**142020215**

FIT: RELAXED FIT

DESCRIPTION: TWILL CARGO PANT WITH EYES LABEL

100% COTTON

OVERSIZE CAMO, DIGITAL BLACK, JAVA BROWN

28 29 30 31 32 33 34 36 38



OVERSIZE CAMO



DIGITAL BLACK



JAVA BROWN

D1 - BOTTOMS

**BIG TIMER TWILL PRINTED CARPENTER PANT**

**142020222**

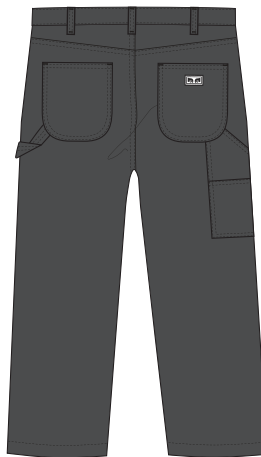
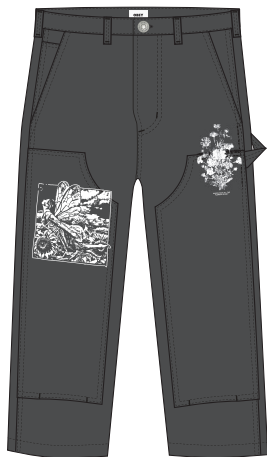
FIT: RELAXED FIT

DESCRIPTION: DOUBLE KNEE WORK PANTS WITH PRINT

100% COTTON

DIGITAL BLACK, JAVA BROWN

26 27 28 29 30 31 32 33 34 36 38



DIGITAL BLACK



JAVA BROWN

D1 - BOTTOMS



hrschule Kotti  
Auto & Motorrad



ATIŁA

ATIŁA  
YEMINI  
BU



**SOMMERFEST**  
ZEREPHONIE  
14. JUNI  
7. JAHRE  
FOMAT & BROSCHURE  
JIM PALP  
JONAS BONG  
TOMMY & STACEE  
21. JUNI  
DANIEL & DANIEL  
DANIEL BOHM  
DANIEL BOHM  
STEFAN JACK  
SEBASTIAN KREMER  
MIKADO

**FREILUFTKINO KREUZBERG**  
PROGRAMM  
14. JUNI  
15. JUNI  
16. JUNI  
17. JUNI  
18. JUNI  
19. JUNI  
20. JUNI  
21. JUNI  
22. JUNI  
23. JUNI  
24. JUNI  
25. JUNI  
26. JUNI  
27. JUNI  
28. JUNI  
29. JUNI  
30. JUNI  
1. JULI  
2. JULI  
3. JULI  
4. JULI  
5. JULI  
6. JULI  
7. JULI  
8. JULI  
9. JULI  
10. JULI  
11. JULI  
12. JULI  
13. JULI  
14. JULI  
15. JULI  
16. JULI  
17. JULI  
18. JULI  
19. JULI  
20. JULI  
21. JULI  
22. JULI  
23. JULI  
24. JULI  
25. JULI  
26. JULI  
27. JULI  
28. JULI  
29. JULI  
30. JULI  
31. JULI

**TEQUILA BEER**  
SUPER DOS  
WAVE DOBRODROG

**IT'S SAUL**  
LAST AT ALL

**FETE DE LA MUSIQUE**

# EASY ELASTIC BOTTOMS



**The Powerless**

**TOCOTRONIC**  
DONOTS  
METZ  
AO EMERALD  
WEATHER NOVA  
REDDY'S DROP  
LEZENJAMMER

**11.07.**

**SOPHIENSALE**  
SOPHIENSALLE.COM

**DAS KAPITALISMUS-TRIBUNAL**  
1. 2. 3.

**LYRIKMARKT**  
18. POESIE FESTIVAL BERLIN 2016  
27. JUNI  
15:00 21:00  
EINTRITT FREI

Wir sind Reich bit



**EASY TWILL PANT**

**142020142**

FIT: RELAXED FIT

DESCRIPTION: ELASTIC WAIST TWILL PANT

100% COTTON

IRISH CREAM, BLACK, FIELD GREEN

XS S M L XL XXL



IRISH CREAM



BLACK



FIELD GREEN

D1 - BOTTOMS

**EASY CORD PANT**

**142020195**

FIT: RELAXED FIT

DESCRIPTION: WIDE WALE ELASTIC CORDUROY PANT

100% COTTON

DIGITAL BLACK, DARK CEDAR, SEPIA, IRISH CREAM

XS S M L XL XXL



DIGITAL BLACK



DARK CEDAR



SEPIA



IRISH CREAM

D1 - BOTTOMS

**EASY RIPSTOP CARGO PANT**

**142020196**

FIT: RELAXED FIT

DESCRIPTION: ELASTIC WAIST RIPSTOP CARGO PANT

100% COTTON

BLACK, FIELD GREEN, DARK BROWN

XS S M L XL XXL



BLACK



FIELD GREEN



DARK BROWN

D1 - BOTTOMS

**BIG EASY CANVAS PANT**

**142020203**

FIT: RELAXED FIT

DESCRIPTION: ELASTIC WAIST DOUBLE KNEE CANVAS PANT

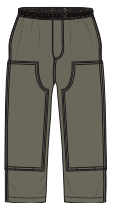
100% COTTON

DARK BROWN, SMOKEY OLIVE, UNBLEACHED

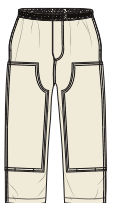
XS S M L XL XXL



DARK BROWN



SMOKEY OLIVE



UNBLEACHED

D1 - BOTTOMS

# DENIM COLLECTION



FALL 2023 | HOLIDAY 2023

The OBEY Denim Collection represents a diverse grouping of OBEY denim bottoms, jackets, and shirts in a variety of fits and shapes. We believe that OBEY denim and the diversity in our denim silhouettes is meant as a vehicle for your own personal style and mens self expression. The beauty of denim is how it wears and changes over time to create its own one of a kind characteristics just like you.

The Medium is The Message.

**PAINTERS DENIM JACKET**

**121160049**

FIT: OVERSIZED FIT

DESCRIPTION: OVERSIZED DENIM JACKET WITH LOGO EMBROIDERY

100% COTTON

LIGHT INDIGO, FADED BLACK

**S M L XL XXL**



FADED BLACK

LIGHT INDIGO

D1 - DENIM COLLECTION

**WORK AROUND JACKET**

**121800541**

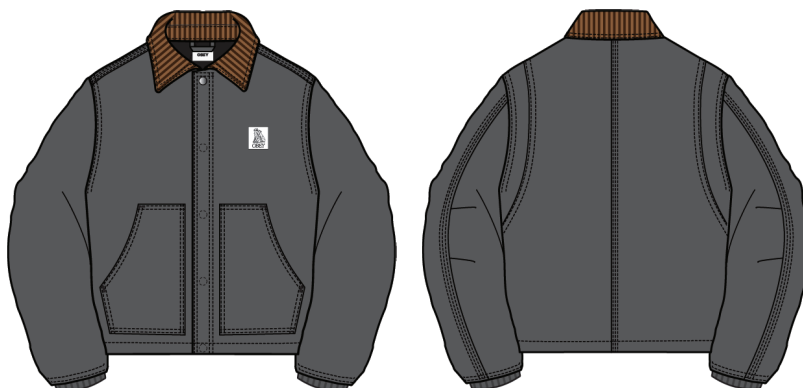
FIT: RELAXED FIT

DESCRIPTION: QUILTED JACKET WITH ACCENT COLLAR AND LABEL

100% COTTON

FADED BLACK, LIGHT INDIGO

**S M L XL XXL**



LIGHT INDIGO

FADED BLACK

D1 - DENIM COLLECTION

**MILTON SHIRT JACKET**

**121160048**

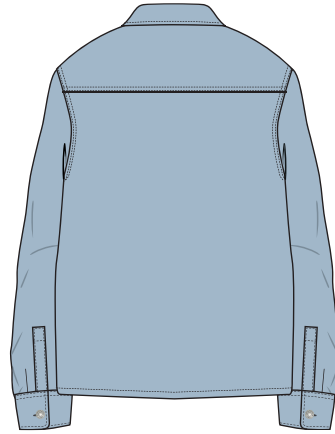
FIT: REGULAR FIT

DESCRIPTION: BUTTON SHIRT JACKET WITH STRIP LABEL

100% COTTON

LIGHT INDIGO, FADED BLACK, CLAY

**S M L XL XXL**



LIGHT INDIGO



FADED BLACK



CLAY

D1 - DENIM COLLECTION

**MAGNOLIA SHIRT**

**181200367**

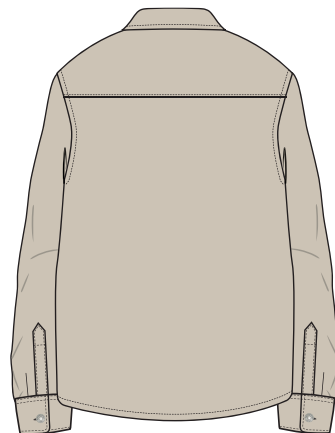
FIT: REGULAR FIT

DESCRIPTION: WOVEN SHIRT WITH EMBROIDERY AT CHEST POCKET

100% COTTON

CLAY, PURPLE ROSE, LIGHT INDIGO

**S M L XL XXL**



CLAY



PURPLE ROSE



LIGHT INDIGO

D1 - DENIM COLLECTION

**BENDER DENIM**

**142010080**

FIT: STANDARD FIT

DESCRIPTION: STANDARD FIT 5 POCKET DENIM

100% COTTON

FADED BLACK, STONEWASH INDIGO, LIGHT INDIGO

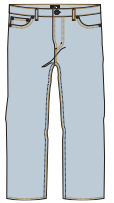
26 27 28 29 30 31 32 33 34 36 38



FADED BLACK



STONEWASH INDIGO



LIGHT INDIGO

D1 - DENIM COLLECTION

**HARDWORK DENIM**

**142010077**

FIT: RELAXED FIT

DESCRIPTION: RELAXED FIT BUTTON FLY DENIM WITH EYES LABELING

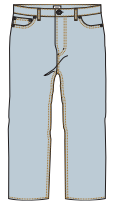
100% COTTON

STONEWASH INDIGO, LIGHT INDIGO, FADED BLACK

26 27 28 29 30 31 32 33 34 36 38



STONEWASH INDIGO



LIGHT INDIGO



FADED BLACK

D1 - DENIM COLLECTION

**HARDWORK CARPENTER DENIM**

**142010078**

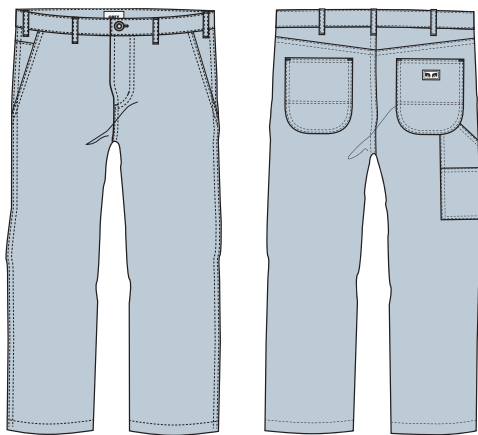
FIT: RELAXED FIT

DESCRIPTION: DENIM CARPENTER PANT

100% COTTON

LIGHT INDIGO, STONEWASH INDIGO

26 27 28 29 30 31 32 33 34 36 38



STONEWASH INDIGO

LIGHT INDIGO

D1 - DENIM COLLECTION

**FUBAR PLEATED DENIM**

**142010082**

FIT: RELAXED FIT

DESCRIPTION: RELAXED FIT DENIM PANTS

100% COTTON

FADED BLACK, LIGHT INDIGO

26 27 28 29 30 31 32 33 34 36 38



LIGHT INDIGO

FADED BLACK

D1 - DENIM COLLECTION



**EASY DENIM PANT**

**142010079**

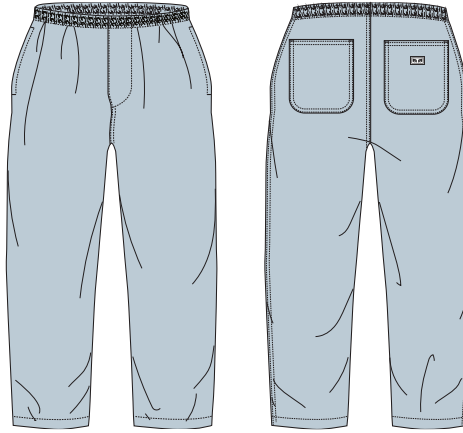
FIT: RELAXED FIT

DESCRIPTION: ELASTIC WAIST PATCH POCKET DENIM PANT

100% COTTON

LIGHT INDIGO, FADED BLACK

XS S M L XL XXL



LIGHT INDIGO



FADED BLACK

D1 - DENIM COLLECTION

# BIGWIG COLLECTION

FALL 2023 | HOLIDAY 2023

The OBEY Bigwig Collection represents the freedom of BIG expression and BIG experimentation both in cut and sew as well as graphics, and art. The energy of the Bigwig collection is a place where a person can experiment, create, play, and mix concepts and garment proportions and graphics that are more fringe and different from the norm. It's currently a home for giant pants and fringe tee graphics paired with more subtle cut and sew pieces that represent the sub cultures and styles we are inspired by.

The ideas are youthful in spirit and energy. They are often eye catching, fringe or experimental in their expression, execution or proportions. This collection is inspired by decades of youth energy, creative cultures and the spirit of underground scenes both past and present. For OBEY the BIGWIG collection represents the roots we came from and the creative journey we are on. It is a place where we take this creative energy, blend it together and hopefully inspire others.

The Medium is The Message

**BIGWIG BAGGY DENIM**

**142010087**

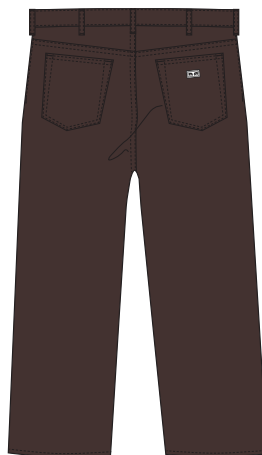
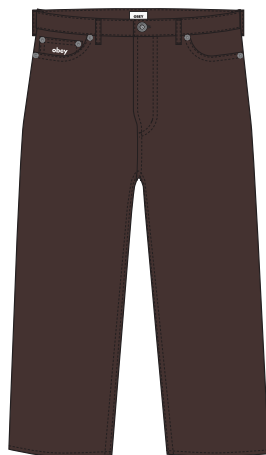
FIT: BAGGY FIT

DESCRIPTION: BAGGY FIT 5 POCKET DENIM

100% COTTON

JAVA BROWN, FADED BLACK, STONE WASH INDIGO, LIGHT INDIGO

26 27 28 29 30 31 32 33 34 36 38



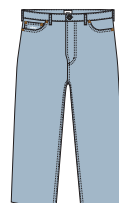
JAVA BROWN



FADED BLACK



STONE WASH INDIGO



LIGHT INDIGO

D1 - BIGWIG COLLECTION

**BIGWIG DENIM CARPENTER PANT**

**142010093**

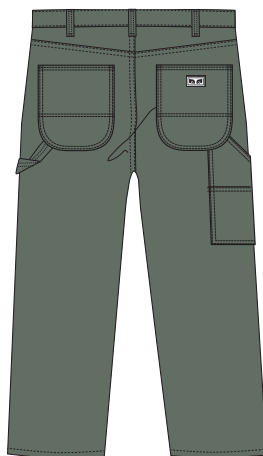
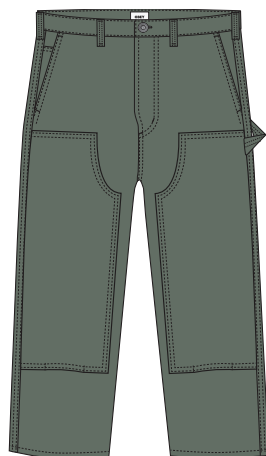
FIT: BAGGY FIT

DESCRIPTION: BAGGY FIT DENIM CARPENTER PANT

100% COTTON

LAUREL WREATH, DIGITAL BLACK, JAVA BROWN, LIGHT INDIGO

26 27 28 29 30 31 32 33 34 36 38



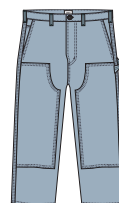
LAUREL WREATH



DIGITAL BLACK



JAVA BROWN



LIGHT INDIGO

D1 - BIGWIG COLLECTION

**BIG WIG CARGO DENIM PANT**

**142010094**

FIT: RELAXED FIT

DESCRIPTION: BIG FIT 5 CARGO DENIM PANT

100% COTTON

STONE WASH, LIGHT INDIGO, JAVA BROWN, CLAY

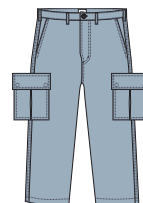
26 27 28 29 30 31 32 33 34 36 38



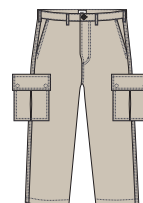
STONE WASH



JAVA BROWN



LIGHT INDIGO



CLAY

D1 - BIGWIG COLLECTION

**BIGWIG BAGGY CORDUROY PANT**

**142020218**

FIT: BAGGY FIT

DESCRIPTION: BAGGY FIT 5 POCKET CORDUROY PANT

100% COTTON

DIGITAL BLACK, JAVA BROWN, CATECHU WOOD

28 29 30 31 32 33 34 36 38



DIGITAL BLACK



JAVA BROWN



CATECHU WOOD

D1 - BIGWIG COLLECTION

**BIGWIG BAGGY TWILL CARGO PANT**

**142020217**

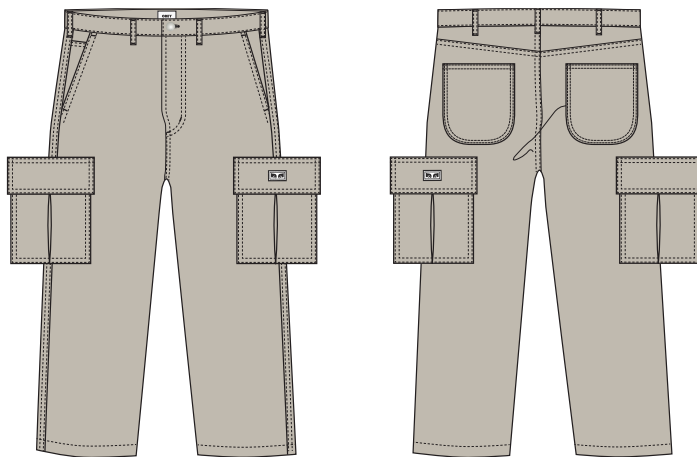
FIT: BAGGY FIT

DESCRIPTION: BAGGY FIT TWILL CARGO PANT

100% COTTON

SILVER GREY, BLACK, JAVA BROWN

28 29 30 31 32 33 34 36 38



SILVER GREY



BLACK



JAVA BROWN

D1 - BIGWIG COLLECTION

**BIGWIG BAGGY CORDUROY CARGO PANT**

**142020216**

FIT: BAGGY FIT

DESCRIPTION: BAGGY FIT CORDUROY CARGO PANT

100% COTTON

ARMY, DIGITAL BLACK, JAVA BROWN

28 29 30 31 32 33 34 36 38



ARMY



DIGITAL BLACK



JAVA BROWN

D1 - BIGWIG COLLECTION

**BIGWIG PLAID WOVEN**

**181200368**

FIT: BAGGY FIT

DESCRIPTION: PLAID LS WOVEN WITH OBEY EMBROIDERY

100% COTTON

SURF BLUE MULTI, SEPIA MULTI

S M L XL XXL



SEPIA MULTI

SURF BLUE MULTI

D1 - BIGWIG COLLECTION

**BIGWIG MICRO PLAID WOVEN**

**181200374**

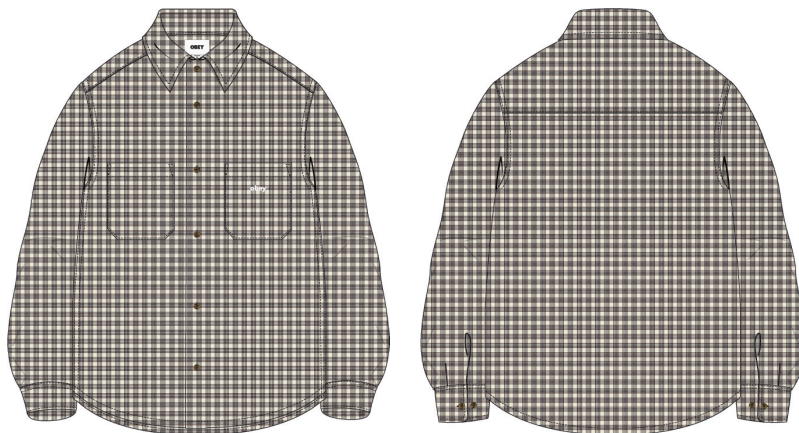
FIT: BAGGY FIT

DESCRIPTION: MICRO PLAID LS WOVEN WITH OBEY EMBROIDERY

100% COTTON

UNBLEACHED MULTI, SILVER GREY MULTI

S M L XL XXL



SILVER GREY MULTI

UNBLEACHED MULTI

D1 - BIGWIG COLLECTION

# PIGMENT COLLECTION

FALL 2023 | HOLIDAY 2023

The OBEY Pigment Collection represents a grouping of high quality, premium fabrics, pigment garment dyed in classic stillouttes in seasonal colors. These colors have a dusty dyed effect that will change and evolve the more you wear and wash the the pieces, giving each piece unique one of a kind characteristics. These premium dyed garments are meant to be classic pieces, embellished with core OBEY branding and iconography to create long lasting, timeless garments that can be worn for comfort now and for years to come.

The Medium is The Message

**LOWERCASE PIGMENT HOOD**

**112470194**

FIT: REGULAR FIT

DESCRIPTION: PIGMENT DYED EXTRA HEAVY WEIGHT HOODED FLEECE WITH EMBROIDERY

100% COTTON

PIGMENT DIGITAL BLACK, PIGMENT JAVA BROWN, PIGMENT PASSION FLOWER, PIGMENT CLAY

**XS S M L XL XXL**



PIGMENT DIGITAL BLACK



PIGMENT JAVA BROWN



PIGMENT PASSION FLOWER



PIGMENT CLAY

D1 - PIGMENT COLLECTION

**LOWERCASE PIGMENT ZIP HOOD**

**112460019**

FIT: REGULAR FIT

DESCRIPTION: PIGMENT DYED EXTRA HEAVY WEIGHT HOODED FLEECE WITH EMBROIDERY

100% COTTON

PIGMENT JAVA BROWN, PIGMENT DIGITAL BLACK, PIGMENT ACADEMY NAVY

**XS S M L XL XXL**



PIGMENT JAVA BROWN



PIGMENT DIGITAL BLACK



PIGMENT ACADEMY NAVY

D1 - PIGMENT COLLECTION



**LOWERCASE PIGMENT CREW**

**112480138**

FIT: REGULAR FIT

DESCRIPTION: PIGMENT DYED EXTRA HEAVY WEIGHT CREW FLEECE WITH EMBROIDERY

100% COTTON

PIGMENT CLAY, PIGMENT ACADEMY NAVY, PIGMENT AVENTURINE GREEN

XS S M L XL XXL



PIGMENT CLAY



PIGMENT ACADEMY NAVY



PIGMENT AVENTURINE GREEN

D1 - PIGMENT COLLECTION

**LOWERCASE PIGMENT SWEATPANT**

**142030046**

FIT: REGULAR FIT

DESCRIPTION: PIGMENT DYED EXTRA HEAVY WEIGHT SWEATPANT WITH EMBROIDERY

100% COTTON

PIGMENT DIGITAL BLACK, PIGMENT JAVA BROWN, PIGMENT CLAY

XS S M L XL XXL



PIGMENT DIGITAL BLACK



PIGMENT JAVA BROWN



PIGMENT CLAY

D1 - PIGMENT COLLECTION

**LOWERCASE PIGMENT POLO**

**111620088**

FIT: REGULAR FIT

DESCRIPTION: PIGMENT DYED EXTRA HEAVY WEIGHT POLO WITH EMBROIDERY

100% COTTON

PIGMENT AVENTURINE GREEN, PIGMENT DIGITAL BLACK, PIGMENT CLAY

**XS S M L XL XXL**



PIGMENT AVENTURINE GREEN



PIGMENT DIGITAL BLACK



PIGMENT CLAY

D1 - PIGMENT COLLECTION

**LOWERCASE PIGMENT THERMAL LS**

**131030128**

FIT: REGULAR FIT

DESCRIPTION: LONG SLEEVE THERMAL WITH OBEY EMBROIDERY

100% COTTON

PIGMENT JAVA BROWN, PIGMENT AVENTURINE GREEN, PIGMENT CLAY

**XS S M L XL XXL**



PIGMENT JAVA BROWN



PIGMENT AVENTURINE GREEN



PIGMENT CLAY

D1 - PIGMENT COLLECTION

**LOWERCASE PIGMENT TEE SS**

**131080353**

FIT: REGULAR FIT

DESCRIPTION: EXTRA HEAVY WEIGHT HOODED FLEECE WITH EMBROIDERY

100% COTTON

PIGMENT PASSION FLOWER, PIGMENT DIGITAL BLACK, PIGMENT AVENTURINE GREEN, PIGMENT CLAY

**XS S M L XL XXL**



**PIGMENT PASSION FLOWER**



**PIGMENT DIGITAL BLACK**



**PIGMENT AVENTURINE GREEN**



**PIGMENT CLAY**

D1 - PIGMENT COLLECTION



# HEADWEAR

M  
O  
T  
E  
L

*Casino  
Stay for  
Free*

VE. WORK. PLAY.  
ME A DOWNTOWNER  
VISIT [HTTP://WWW.  
DOWNTOWNVINEGAS/](http://www.downtownvegas.com)

#DTLV parking

WAVES



**BOLD TWILL 6 PANEL STRAPBACK**

**100580302**

FIT: CLASSIC FIT

DESCRIPTION: 6 PANEL STRAPBACK WITH OBEY EMBROIDERY

100% COTTON

BLACK, BROWN, SURF BLUE, KHAKI

O/S



BLACK



BROWN



SURF BLUE



KHAKI

D1 - HEADWEAR

**OBEY CORD LABEL 6 PANEL STRAPBACK**

**100580355**

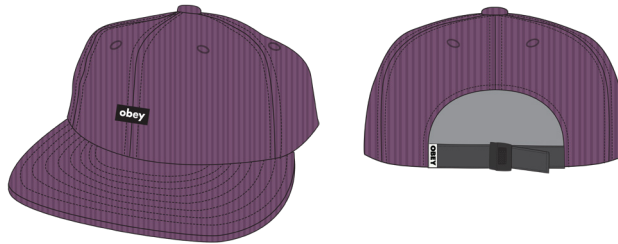
FIT: CLASSIC FIT

DESCRIPTION: 6 PANEL CORDUROY STRAPBACK WITH LABEL

100% COTTON

WINEBERRY, BLACK, BROWN

O/S



WINEBERRY



BLACK



BROWN

D1 - HEADWEAR

**OBEY SHADE 6 PANEL SNAPBACK**

**100580348**

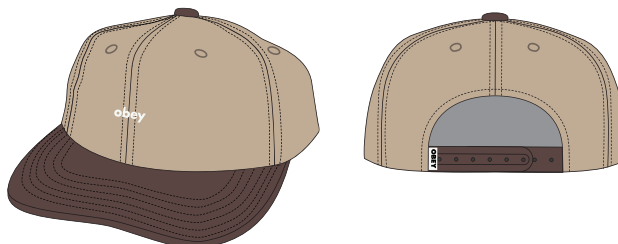
FIT: CLASSIC FIT

DESCRIPTION: 6 PANEL SURGE SNAPBACK WITH EMBROIDERY

85% ACRYLIC 15% WOOL

KHAKI MULTI, BLACK MULTI, DARK GREY MULTI, DARK CEDAR MULTI

O/S



KHAKI MULTI



BLACK MULTI



DARK GREY MULTI



DARK CEDAR MULTI

D1 - HEADWEAR

**OBEY LOWERCASE 5 PANEL SNAPBACK**

**100490108**

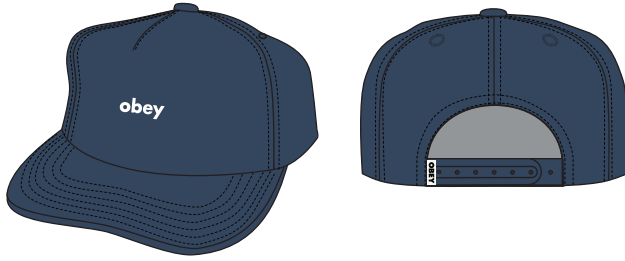
FIT: CLASSIC FIT

DESCRIPTION: 5 PANEL SNAPPACK WITH EMBROIDERY

100% COTTON

MILD NAVY, BLACK, BROWN, UNBLEACHED

O/S



MILD NAVY



BLACK



BROWN



UNBLEACHED

D1 - HEADWEAR

**OBEY CASE 5 PANEL SNAPBACK**

**100490113**

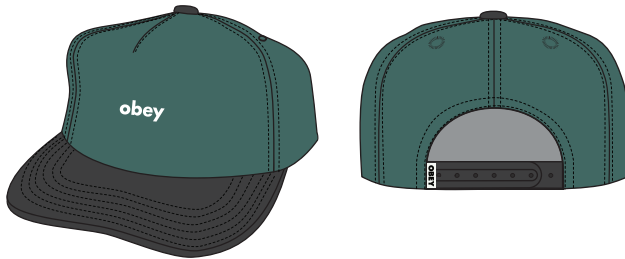
FIT: CLASSIC FIT

DESCRIPTION: 5 PANEL SNAPBACK WITH EMBROIDERY

100% COTTON

DARK CEDAR MULTI, LIGHT BLUE MULTI, UNBLEACHED MULTI

O/S



DARK CEDAR MULTI



LIGHT BLUE MULTI



UNBLEACHED MULTI

D1 - HEADWEAR

**OBEY CASE 6 PANEL CLASSIC SNAPBACK**

**100580351**

FIT: CLASSIC FIT

DESCRIPTION: 6 PANEL SNAPBACK WITH EMBROIDERY

85% ACRYLIC 15% WOOL

BROWN, BLACK, NAVY, DARK CEDAR

O/S



BROWN



BLACK



NAVY



DARK CEDAR

D1 - HEADWEAR

**OBEY LOWERCASE TRUCKER**

**100500039**

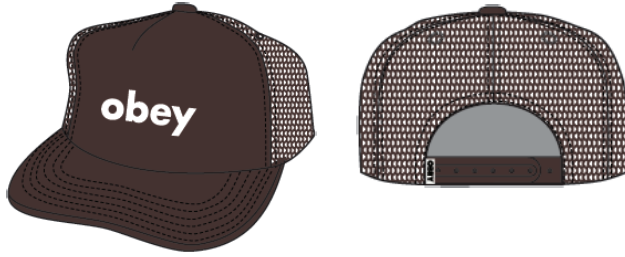
FIT: CLASSIC FIT

DESCRIPTION: 5 PANEL FOAM TRUCKER WITH EMBROIDERY

100% POLYESTER

BROWN, BLACK, SURF BLUE, IRISH CREAM

O/S



BROWN



BLACK



SURF BLUE



IRISH CREAM

D1 - HEADWEAR

**BOLD TWILL BUCKET HAT**

**100520055**

FIT: CLASSIC FIT

DESCRIPTION: TWILL BUCKET HAT WITH OBEY EMBROIDERY

100% COTTON

BLACK, BROWN, WINEBERRY, UNBLEACHED

O/S



BLACK



BROWN



WINEBERRY



UNBLEACHED

D1 - HEADWEAR

**BOLD CORD BUCKET HAT**

**100520051**

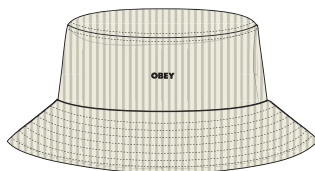
FIT: CLASSIC FIT

DESCRIPTION: CORDUROY BUCKET HAT WITH OBEY EMBROIDERY

100% COTTON

UNBLEACHED, BLACK, BROWN

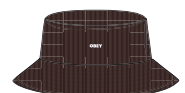
O/S



UNBLEACHED



BLACK



BROWN

D1 - HEADWEAR

**OBEY PAGE TRUCKER**

**100500040**

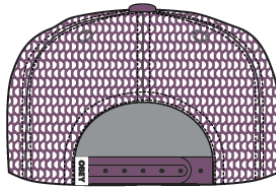
FIT: CLASSIC FIT

DESCRIPTION: 5 PANEL TRUCKER WITH OBEY EMBROIDERY

100% POLYESTER

WINEBERRY, BLACK, SILVER GREY, CORK

O/S



WINEBERRY



BLACK



SILVER GREY



CORK

D1 - HEADWEAR

**OBEY ELLIS 6 PANEL STRAPBACK**

**100580356**

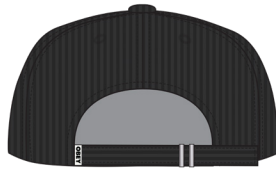
FIT: CLASSIC FIT

DESCRIPTION: 6 PANEL TWILL SNAPBACK WITH EMBROIDERY

100% COTTON

BLACK, BROWN, WINEBERRY

O/S



BLACK



BROWN



WINEBERRY

D1 - HEADWEAR

**OBEY RUSH 6 PANEL CLASSIC SNAPBACK**

**100580352**

FIT: CLASSIC FIT

DESCRIPTION: 6 PANEL SNAPBACK WITH EMBROIDERY

85% ACRYLIC 15% WOOL

NAVY, BLACK, BROWN

O/S



NAVY



BLACK



BROWN

D1 - HEADWEAR



**OBHEY SELECT 6 PANEL SNAPBACK**

**100580357**

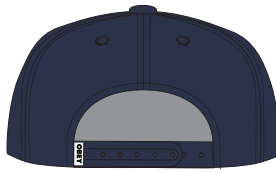
FIT: CLASSIC FIT

DESCRIPTION: 6 PANEL TWILL SNAPBACK WITH EMBROIDERY

100% COTTON

NAVY, BLACK, UNBLEACHED

O/S



NAVY



BLACK



UNBLEACHED

D1 - HEADWEAR

**OBHEY PLANT 6 PANEL SNAPBACK**

**100580361**

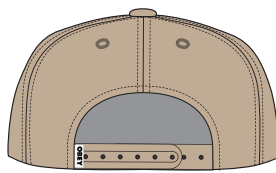
FIT: CLASSIC FIT

DESCRIPTION: 6 PANEL TWILL SNAPBACK WITH EMBROIDERY

100% COTTON

KHAKI, BLACK

O/S



KHAKI



BLACK

D1 - HEADWEAR

**WIZARD 6 PANEL SNAPBACK**

**100580362**

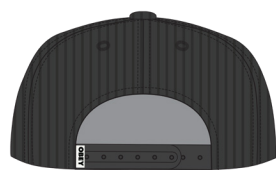
FIT: CLASSIC FIT

DESCRIPTION: 6 PANEL CORDUROY SNAPBACK WITH EMBROIDERY

100% COTTON

BLACK, SAND

O/S



BLACK



SAND

D1 - HEADWEAR

**OBEY RECORDS 5 PANEL SNAPBACK**

**100490118**

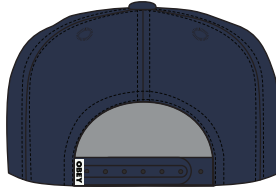
FIT: CLASSIC FIT

DESCRIPTION: 5 PANEL SNAPPACK WITH EMBROIDERY

100% COTTON

MILD NAVY, BLACK

O/S



BLACK

MILD NAVY

D1 - HEADWEAR

**OBEY SLAP 5 PANEL SNAPBACK**

**100490116**

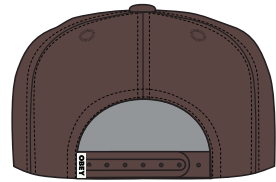
FIT: MID CROWN

DESCRIPTION: 5 PANEL TWILL SNAPBACK WITH EMBROIDERY

100% COTTON

BROWN, BLACK

O/S



BLACK

BROWN

D1 - HEADWEAR

**NATURE 5 PANEL SNAPBACK**

**100490117**

FIT: CLASSIC FIT

DESCRIPTION: 5 PANEL SNAPPACK WITH EMBROIDERY

100% COTTON

BLACK, BROWN

O/S



BROWN

BLACK

D1 - HEADWEAR

**MIX 6 PANEL CLASSIC SNAPBACK**

**100580360**

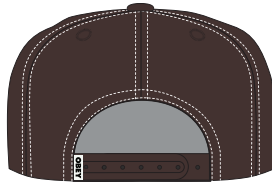
FIT: CLASSIC FIT

DESCRIPTION: 6 PANEL WOOL SNAPBACK WITH EMBROIDERY

85% ACRYLIC 15% WOOL

BROWN, BLACK

O/S



BLACK

BROWN

D1 - HEADWEAR

**DEVIL 6 PANEL CLASSIC SNAPBACK**

**100580359**

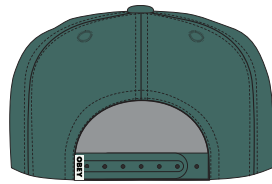
FIT: CLASSIC FIT

DESCRIPTION: 6 PANEL WOOL SNAPBACK WITH EMBROIDERY

85% ACRYLIC 15% WOOL

DARK CEDAR, BLACK

O/S



BLACK

DARK CEDAR

D1 - HEADWEAR

**OBEY CHISEL TRUCKER**

**100500044**

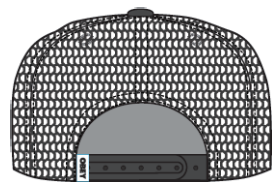
FIT: CLASSIC FIT

DESCRIPTION: 5 PANEL TRUCKER WITH OBEY PATCH

100% POLYESTER

BLACK, BROWN

O/S



BROWN

BLACK

D1 - HEADWEAR

**OBEY ALWAYS TRUCKER**

**100500043**

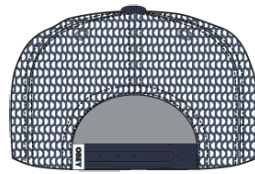
FIT: CLASSIC FIT

DESCRIPTION: 5 PANEL TRUCKER WITH OBEY PATCH

100% POLYESTER

NAVY MULTI, BROWN MULTI

O/S



BROWN MULTI

NAVY MULTI

D1 - HEADWEAR

**GRAND BUCKET HAT**

**100520087**

FIT: CLASSIC FIT

DESCRIPTION: OBEY PLAID BELL BUCKET HAT WITH EMBROIDERY

60% POLYESTER 40% WOOL

BLACK, KHAKI

O/S



KHAKI

BLACK

D1 - HEADWEAR

**ICON EYES BEANIE**

**100030132**

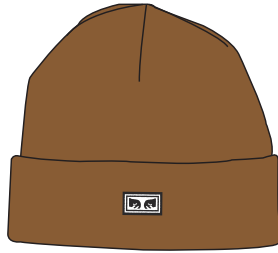
FIT: CLASSIC FIT

DESCRIPTION: STANDARD ROLL CUFF JERSEY KNIT BEANIE W/ OBEY EYES

100% ACRYLIC

RUBBER, BLACK, SEPIA, DARK CEDAR, RED ORANGE

O/S



RUBBER



BLACK



SEPIA



DARK CEDAR



RED ORANGE

D1 - HEADWEAR

**MICRO BEANIE**

**100030125**

FIT: CLASSIC FIT

DESCRIPTION: EXTRA SHALLOW ROLL CUFF RIUB BEANIE W/ OBEY PIN

100% ACRYLIC

BLACK, JAVA BROWN, PURPLE ROSE, ICEBERG GREEN, CORK, UNBLEACHED

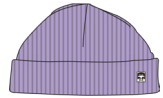
O/S



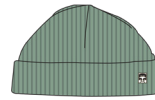
BLACK



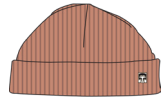
JAVA BROWN



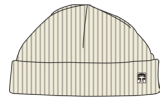
PURPLE ROSE



ICEBERG GREEN



CORK



UNBLEACHED

D1 - HEADWEAR

**FUTURE BEANIE**

**100030163**

FIT: CLASSIC FIT

DESCRIPTION: MID BEANIE WITH OBEY EMBROIDERY

100% ACRYLIC

WINEBERRY, BLACK, JAVA BROWN, SURF BLUE, FERN GREEN, SILVER GREY

O/S



WINEBERRY



BLACK



JAVA BROWN



SURF BLUE



FERN GREEN



SILVER GREY

D1 - HEADWEAR

**KARMA BEANIE**

**100030197**

FIT: CLASSIC FIT

DESCRIPTION: CUFF BEANIE WITH OBEY EMBROIDERY

100% ACRYLIC

MUSHROOM, BLACK, JAVA BROWN, RUBBER BROWN, FERN GREEN

O/S



MUSHROOM



BLACK



JAVA BROWN



RUBBER BROWN



FERN GREEN

D1 - HEADWEAR

**OBEY SLAP BEANIE**

**100030213**

FIT: CLASSIC FIT

DESCRIPTION: MID BEANIE WITH OBEY EMBROIDERY

100% ACRYLIC

BLACK, RUBBER

O/S



BLACK



RUBBER

D1 - HEADWEAR

**OBEY PAISLEY BEANIE**

**100030212**

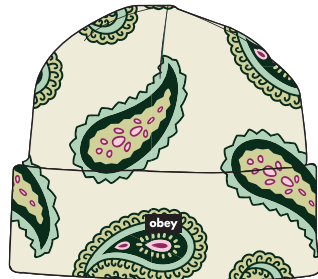
FIT: CLASSIC FIT

DESCRIPTION: CUFF BEANIE WITH JACQUARD ART

100% ACRYLIC

UNBLEACHED MULTI, SEPIA MULTI

O/S



UNBLEACHED MULTI



SEPIA MULTI

D1 - HEADWEAR

**OBEY DEVIL BEANIE**

**100030214**

FIT: CLASSIC FIT

DESCRIPTION: NO CUFF JAQUARD BEANIE WITH OBEY LABEL

100% ACRYLIC

BLACK, CLEAR SKY MULTI

O/S



BLACK



CLEAR SKY MULTI

D1 - HEADWEAR

**OBEY HEAVEN BEANIE**

**100030215**

FIT: CLASSIC FIT

DESCRIPTION: INTARIA CUFF BEANIE WITH OBEY EMBROIDERY

100% ACRYLIC

RUBBER, BLACK

O/S



RUBBER



BLACK

D1 - HEADWEAR

**BASS BEANIE**

**100030211**

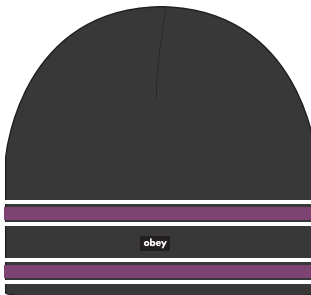
FIT: CLASSIC FIT

DESCRIPTION: NO CUFF BEANIE WITH JAQUARD STRIPE ART

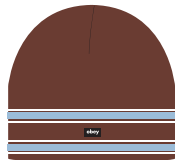
100% ACRYLIC

BLACK, SEPIA

O/S



BLACK



SEPIA

D1 - HEADWEAR



PEACE

LA CAFE

Sai Hing St  
喜慶街

TENNIS TRAINING

VISUAL DISOBEDIENCE

BAGS



**WASTED HIP BAG**

**100010098**

DESCRIPTION: SMALL HIP BAG

100% COTTON TWILL

DENIM, BLACK TWILL

O/S



DENIM



BLACK TWILL

D1 - BAGS

**COMMUTER WAIST BAG**

**100010126**

DESCRIPTION: TECHNICAL WAIST BAG WITH MULTIPLE POCKETS, COMPRESSION STRAPS, AND PVC PATCH

100% POLYESTER

SURF BLUE MULTI, BLACK

O/S



SURF BLUE MULTI



BLACK

D1 - BAGS

**CONDITIONS TRAVELER BAG III**

**100010135**

DESCRIPTION: SHOULDER BAG WITH MULTIPLE POCKETS AND PVC PATCH

100% POLYESTER

BLACK, BROWN MULTI

O/S



BLACK



BROWN MULTI

D1 - BAGS

**FLOWER FIELD TOTE BAG**

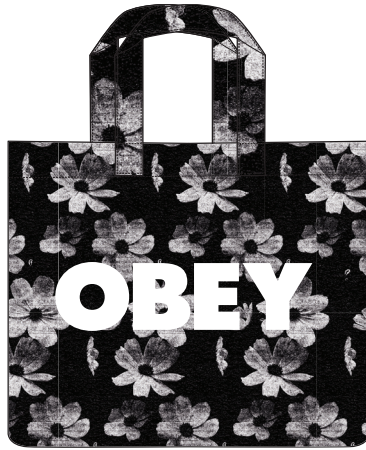
**100010147**

DESCRIPTION: PVC TOTA BAG WITH POPLIN UNDERLAY, INTERIOR POCKET AND SCREENPRINT

CONTENT: 100% PVC

BLACK MULTI

O/S



BLACK MULTI

D1 - TOTE BAG

**OBEY COME PLAY WITH US**

**100553602**

DESCRIPTION: JUMBO TOTE BAG

CONTENT: 100% COTTON

BLACK, CREAM

O/S



BLACK



CREAM

D1 - TOTE BAG

**OBEY BREAK BARRIERS**

**100553606**

DESCRIPTION: JUMBO TOTE BAG

CONTENT: 100% COTTON

BLACK, CREAM

O/S



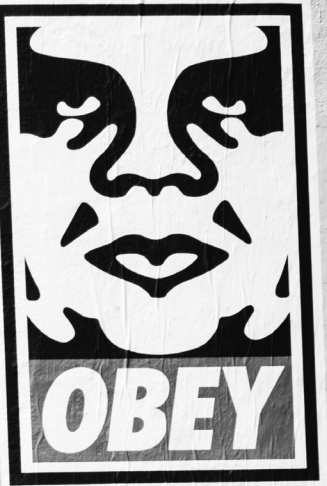
BLACK



CREAM

D1 - TOTE BAG

# SOCKS



TENNIS  
TRAINING  
2540 8333

Soul Healing Fri 4 Novem  
**DRUM & BAS**

From Soulful to Jungle to downtr

Australi  
Funk  
Severit

HK Gosp



Ly

Dan

Rog

B

< 12 F

Three years strong, Soul Healing brings its 3<sup>rd</sup> instal of DNB Smashers for 2011 packed and vibing. With a line up of seasoned selectors, resident gospel-bass s Momoko & Fokuz Recording's emerging liquid funk producer Severity Zero fr under. A night of soulful vibes as well as the harder heavy duty bizness in the



SOULEALINGHONGKONG

BA LGF 13 Lyndhurst Ten

**COOPER II SOCKS**

**100260093**

DESCRIPTION: CLASSIC ATHLETIC SOCKS WITH CONTRAST STRIPES AND LOGO JACQUARD

85% COTTON / 13% POLYESTER / 2% SPANDEX

WHITE / SURF BLUE, WHITE / BLACK, WHITE / JAVA BROWN, WHITE / DARK CEDAR

O/S



WHITE / SURF BLUE



WHITE / BLACK



WHITE / JAVA BROWN



WHITE / DARK CEDAR

D1 - SOCKS

**OBEY EYES ICON SOCKS**

**100260141**

DESCRIPTION: CLASSIC ATHLETIC SOCKS WITH JACQUARD OBEY LOGO

85% COTTON / 13% POLYESTER / 2% SPANDEX

BLACK, JAVA BROWN, WINEBERRY, WHITE

O/S



BLACK



JAVA BROWN



WINEBERRY



WHITE

D1 - SOCKS

**OBEY BOLD SOCKS**

**100260144**

DESCRIPTION: CLASSIC ATHLETIC SOCKS WITH OBEY EMBROIDERY

85% COTTON / 13% POLYESTER / 2% SPANDEX

ICEBERG GREEN, BLACK, UNBLEACHED, WHITE

O/S



ICEBERG GREEN



BLACK



UNBLEACHED



WHITE

D1 - SOCKS

**OBEY FLORAL SOCKS**

**100260176**

DESCRIPTION: CLASSIC ATHLETIC TUBE SOCKS

85% COTTON / 13% POLYESTER / 2% SPANDEX

JAVA BROWN, UNBLEACHED

O/S



JAVA BROWN



UNBLEACHED

D1 - SOCKS

**OBEY DAHLIA SOCKS**

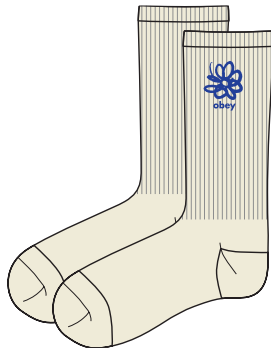
**100260177**

DESCRIPTION: CLASSIC ATHLETIC TUBE SOCKS

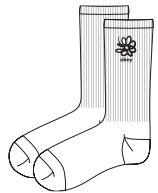
85% COTTON / 13% POLYESTER / 2% SPANDEX

UNBLEACHED, WHITE

O/S



UNBLEACHED



WHITE

D1 - SOCKS

**OBEY MERTON SOCKS**

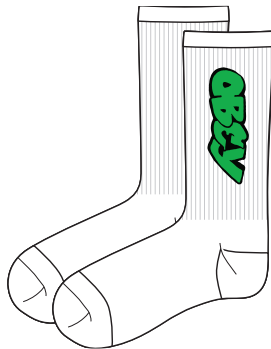
**100260178**

DESCRIPTION: CLASSIC ATHLETIC TUBES SOCKS

85% COTTON / 13% POLYESTER / 2% SPANDEX

WHITE, PURPLE ROSE

O/S



WHITE



PURPLE ROSE

D1 - SOCKS

# ACCESSORIES



**BIG BOY WEB BELT**

**100050026**

DESCRIPTION: ADJUSTABLE WEB BELT WITH SILVER HARDWARE AND A OBEY EYE LABEL

60% COTTON / 40% POLYESTER

SURF BLUE, BLACK, JAVA BROWN, UNBLEACHED

O/S



BLACK



JAVA BROWN



UNBLEACHED

SURF BLUE

D1 - ACCESSORIES

**OBEY GRAFFITI BELT**

**100050038**

DESCRIPTION: PRINTED WEB BELT WITH BUCKLE AND EYES LABEL

60% COTTON 40% POLYESTER

BLACK MULTI, JAVA BROWN MULTI

O/S



JAVA BROWN MULTI

BLACK MULTI

D1 - ACCESSORIES

**OBEY SNAKE DRESS BELT**

**100050036**

DESCRIPTION: EMBOSSED FAUX SNAKE SKIN PRINT BELT WITH PU BACKING AND ENGRAVED METAL BUCKLE AND END TIP

50% POLYESTER 50% PU

TAN, DARK GREEN

S/M, L/XL



DARK GREEN

TAN

D1 - ACCESSORIES



**BULLDOG AIR FRESHNER**

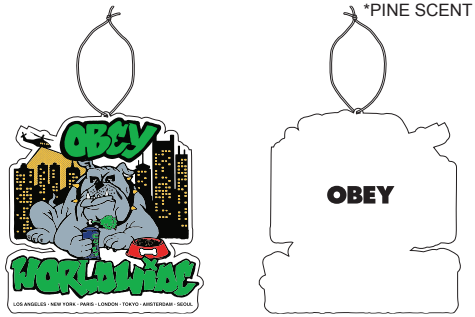
**100680011**

DESCRIPTION: PRINTED AIR FRESHENER WITH PINE SCENT

100% PAPER

BLACK MULTI

O/S



BLACK MULTI

D1 - ACCESSORIES

**OBEY ICON BANDANA**

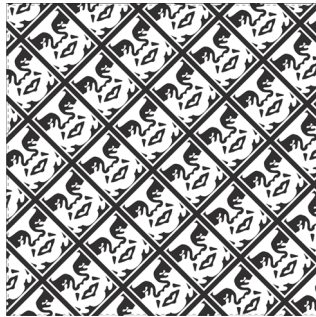
**100020002**

DESCRIPTION: PRINTED BANDANA

100% COTTON

BLACK / WHITE

O/S



BLACK / WHITE

D1 - ACCESSORIES

**OBEY ICON AIR FRESHENER**

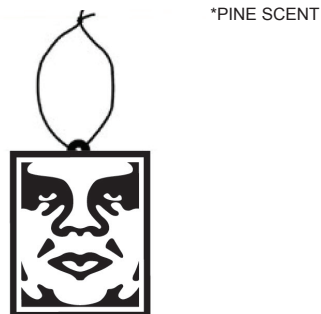
**100680003**

DESCRIPTION: PRINTED AIR FRESHENER WITH PINE SCENT

100% PAPER

BLACK MULTI

O/S



BLACK MULTI

D1 - ACCESSORIES

**OBEY ICON METAL KEYCHAIN**

**100160021**

DESCRIPTION: METAL KEYCHAIN WITH ICON

100% METAL

WHITE

O/S



WHITE

D1 - ACCESSORIES

---

**BOLD BOTTLE**

**100320006**

DESCRIPTION: METAL INSTALLED WATER BOTTLE WITH PRINT

100% METAL

WHITE

O/S



WHITE

D1 - ACCESSORIES

---

**BOLD PEN**

**100770000**

DESCRIPTION: PLASTIC BAL POINT PEN

100% METAL

BLACK

O/S



BLACK

D1 - ACCESSORIES

**STICKER PACK 5**

**100270012**

DESCRIPTION: ASSORTED STICKERS FOR THE OBEY FIENDS. SPREAD IT! (STICKERS MAY VARY FROM CATALOG PHOTO)

ASSORTED

O/S



ASSORTED

D1 - ACCESSORIES

**STICKER PACK 2**

**100270001**

DESCRIPTION: ASSORTED STICKERS FOR THE OBEY FIENDS. SPREAD IT! (STICKERS MAY VARY FROM CATALOG PHOTO)

ASSORTED

O/S



ASSORTED

D1 - ACCESSORIES

**OBEY WORLDWIDE**

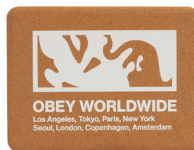
**326003236**

DESCRIPTION: CORK BLOCK WITH BOLD OBEY PRINT

100% CORK

O/S

\* THIS ITEM IS POP, AND INTENDED TO BE USED IN STORE DISPLAY. NOT FOR RESALE



CORK

D1 - POP

**LARGE ICON FACE FRAMED PRINT**

**326000174**

DESCRIPTION: FRAMED PRINT

\* THIS ITEM IS POP, AND INTENDED TO BE USED IN STORE DISPLAY. NOT FOR RESALE

ASSORTED

O/S

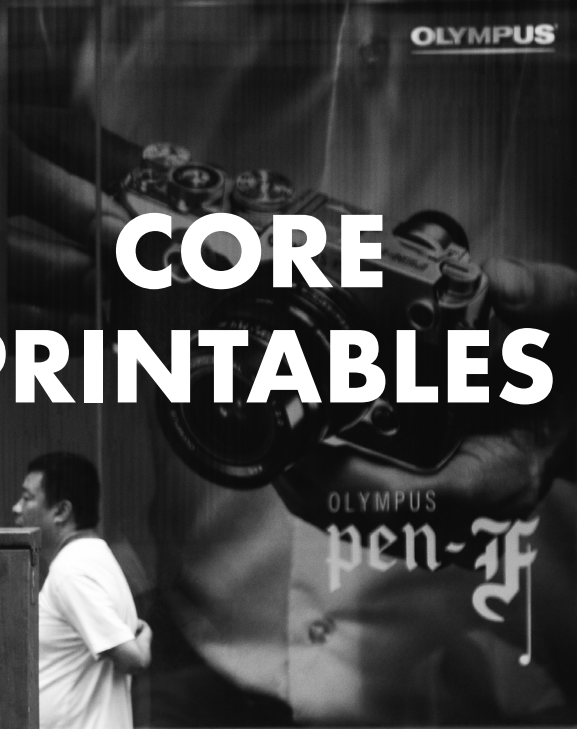


ASSORTED

D1 - POP

---

# CORE PRINTABLES



**OBEY BOLD HOOD**

112842349

DESCRIPTION: PREMIUM HOOD

CONTENT: 58% COTTON 42% POLYESTER

SURF BLUE, BLACK, ACADEMY NAVY, SILVER GREY

XS S M L XL XXL



SURF BLUE



BLACK



ACADEMY NAVY



SILVER GREY

D1 - CORE PRINTABLES

**OBEY EYES ICON HOOD**

112843126

DESCRIPTION: PREMIUM HOOD

CONTENT: 58% COTTON 42% POLYESTER

PASSION FLOWER, BLACK, SEPIA, UNBLEACHED

XS S M L XL XXL



PASSION FLOWER



BLACK



SEPIA



UNBLEACHED

D1 - CORE PRINTABLES

**OBEY BOLD CREW**

**112862349**

DESCRIPTION: PREMIUM CREW

CONTENT: 58% COTTON 42% POLYESTER

ADVENTURE GREEN, BLACK, SURF BLUE

XS S M L XL XXL



ADVENTURE GREEN



BLACK



SURF BLUE

D1 - CORE PRINTABLES

**OBEY EYES ICON CREW**

**112863126**

DESCRIPTION: PREMIUM CREW

CONTENT: 58% COTTON 42% POLYESTER

BLACK, SILVER GREY, HEATHER GREY

XS S M L XL XXL



BLACK



SILVER GREY



HEATHER GREY

D1 - CORE PRINTABLES

**OBEY EYES ICON ZIP**

**112853126**

DESCRIPTION: PREMIUM ZIP FLEECE

CONTENT: 58% COTTON 42% POLYESTER

SURF BLUE, BLACK

XS S M L XL XXL



BLACK

SURF BLUE

D1 - CORE PRINTABLES

**OBEY BOLD ZIP**

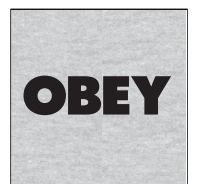
**112852349**

DESCRIPTION: PREMIUM ZIP FLEECE

CONTENT: 58% COTTON 42% POLYESTER

BLACK, HEATHER GREY

XS S M L XL XXL



HEATHER GREY

BLACK

D1 - CORE PRINTABLES



**OBEY LOWER CASE 2**

**165263411**

DESCRIPTION: CLASSIC FIT T-SHIRT

CONTENT: 100% COTTON

SAND, BLACK, FOREST GREEN, WHITE

**S M L XL XXL**



SAND



BLACK



FOREST GREEN



WHITE

D1 - CORE PRINTABLES

**BOLD OBEY 2**

**165263016**

DESCRIPTION: CLASSIC FIT T-SHIRT

CONTENT: 100% COTTON

DIGITAL VIOLET, BLACK, CREAM, WHITE

**S M L XL XXL**



DIGITAL VIOLET



BLACK



CREAM



WHITE

D1 - CORE PRINTABLES

**OBEY EYES ICON 2**

**165262142**

DESCRIPTION: CLASSIC FIT T-SHIRT

CONTENT: 100% COTTON

GOOD GREY, BLACK, BROWN SUGAR, WHITE

**S M L XL XXL**



GOOD GREY



BLACK



BROWN SUGAR



WHITE

D1 - CORE PRINTABLES

**OBEY BOLD 3**

**166912888**

DESCRIPTION: HEAVYWEIGHT BOX FIT T-SHIRT

CONTENT: 100% COTTON

SURF BLUE, OFF BLACK, SEPIA, MULBERRY PURPLE, SILVER GREY

S M L XL XXL



SURF BLUE



OFF BLACK



SEPIA



MULBERRY PURPLE



SILVER GREY

D1 - CORE PRINTABLES

**OBEY EYES ICON 2**

**166912142**

DESCRIPTION: HEAVYWEIGHT BOX FIT T-SHIRT

CONTENT: 100% COTTON

ADVENTURE GREEN, OFF BLACK, DIGITAL LAVENDER, CORK, SILVER GREY

XS S M L XL XXL



ADVENTURE GREEN



OFF BLACK



DIGITAL LAVENDER



CORK



SILVER GREY

D1 - CORE PRINTABLES

**OBEY BOLD 3**

**167102888**

DESCRIPTION: HEAVYWEIGHT LONGSLEEVE BOX FIT T-SHIRT

CONTENT: 100% COTTON

MULBERRY PURPLE, OFF BLACK, SEPIA, SURF BLUE, SILVER GREY

**S M L XL XXL**



MULBERRY PURPLE



OFF BLACK



SEPIA



SURF BLUE



SILVER GREY

D1 - CORE PRINTABLES

**OBEY EYES ICON 2**

**167102142**

DESCRIPTION: HEAVYWEIGHT LONGSLEEVE BOX FIT T-SHIRT

CONTENT: 100% COTTON

DIGITAL LAVENDER, OFF BLACK, ADVENTURE GREEN, CORK, IRISH CREAM

**S M L XL XXL**



DIGITAL LAVENDER



OFF BLACK



ADVENTURE GREEN

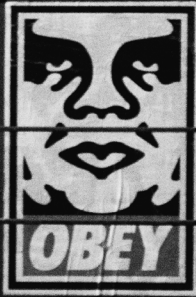


CORK



IRISH CREAM

D1 - CORE PRINTABLES



# LIFESTYLE PRINTABLES

**OBEY DEMON**

**112843600**

DESCRIPTION: PREMIUM HOOD

CONTENT: 58% COTTON 42% POLYESTER

SEPIA, BLACK

S M L XL XXL



SEPIA



BLACK

D1 - PREMIUM HOOD

**OBEY COME PLAY WITH US**

**112843602**

DESCRIPTION: PREMIUM HOOD

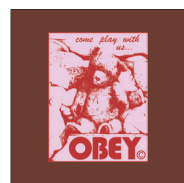
CONTENT: 58% COTTON 42% POLYESTER

ACADEMY NAVY, SEPIA

S M L XL XXL



ACADEMY NAVY



SEPIA

D1 - PREMIUM HOOD

**OBEY NO PAIN**

**112843609**

DESCRIPTION: PREMIUM HOOD

CONTENT: 58% COTTON 42% POLYESTER

UNBLEACHED, BLACK

**S M L XL XXL**



UNBLEACHED



BLACK

D1 - PREMIUM HOOD

**OBEY WRESTLER**

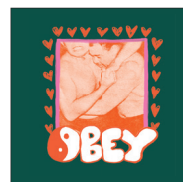
**112863603**

DESCRIPTION: PREMIUM CREW

CONTENT: 58% COTTON 42% POLYESTER

SEPIA, ADVENTURE GREEN

S M L XL XXL



ADVENTURE GREEN

SEPIA

D1 - PREMIUM CREW

**OBEY EYES MASK**

**112863615**

DESCRIPTION: PREMIUM CREW

CONTENT: 58% COTTON 42% POLYESTER

SURF BLUE, SILVER GREY

S M L XL XXL



SILVER GREY

SURF BLUE

D1 - PREMIUM CREW



**OBEY BREAK BARRIERS**

**112853606**

DESCRIPTION: PREMIUM ZIP HOOD

CONTENT: 58% COTTON 42% POLYESTER

BLACK, ACADEMY NAVY

S M L XL XXL



ACADEMY NAVY

BLACK

D1 - PREMIUM ZIP HOOD

**OBEY FIGHT THE SYSTEM**

**165263599**

DESCRIPTION: CLASSIC FIT T-SHIRT

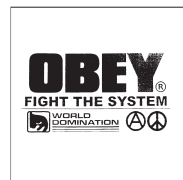
CONTENT: 100% COTTON

BLACK, SAND, WHITE

S M L XL XXL



SAND



WHITE

BLACK

D1 - CLASSIC TEE

**OBEY DEMON**

**165263600**

DESCRIPTION: CLASSIC FIT T-SHIRT

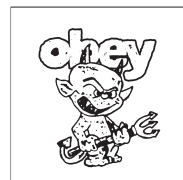
CONTENT: 100% COTTON

BROWN SUGAR, BLACK, WHITE

S M L XL XXL



BLACK



WHITE

BROWN SUGAR

D1 - CLASSIC TEE

**OBEY DISAPPEAR**

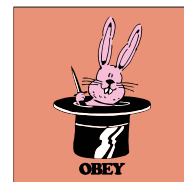
**165263601**

DESCRIPTION: CLASSIC FIT T-SHIRT

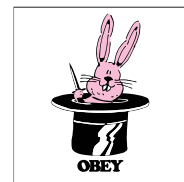
CONTENT: 100% COTTON

DIGITAL LAVENDER, CITRUS, WHITE

**S M L XL XXL**



CITRUS



WHITE

DIGITAL LAVENDER

D1 - CLASSIC TEE

**OBEY COME PLAY WITH US**

**165263602**

DESCRIPTION: CLASSIC FIT T-SHIRT

CONTENT: 100% COTTON

SILT, BLACK, DIGITAL VIOLET

**S M L XL XXL**



BLACK



DIGITAL VIOLET

SILT

D1 - CLASSIC TEE

**OBEY ROSE GARDEN**

**165263604**

DESCRIPTION: CLASSIC FIT T-SHIRT

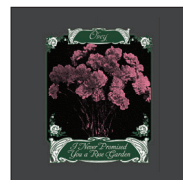
CONTENT: 100% COTTON

DIGITAL LAVENDER, BLACK, WHITE

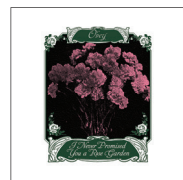
S M L XL XXL



DIGITAL LAVENDER



BLACK



WHITE

D1 - CLASSIC TEE

**OBEY WRESTLER**

**165263603**

DESCRIPTION: CLASSIC FIT T-SHIRT

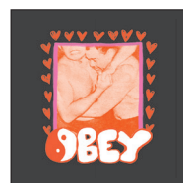
CONTENT: 100% COTTON

CUCUMBER, BLACK, CREAM

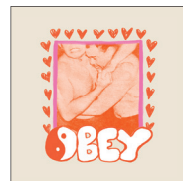
S M L XL XXL



CUCUMBER



BLACK



CREAM

D1 - CLASSIC TEE

**OBEY DESTROY THE MACHINE**

**165263605**

DESCRIPTION: CLASSIC FIT T-SHIRT

CONTENT: 100% COTTON

CREAM, BLACK, WHITE

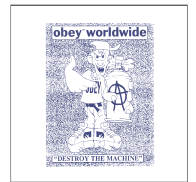
S M L XL XXL



CREAM



BLACK



WHITE

D1 - CLASSIC TEE

**OBEY BREAK BARRIERS**

**165263606**

DESCRIPTION: CLASSIC FIT T-SHIRT

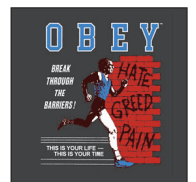
CONTENT: 100% COTTON

WHITE, BLACK, NAVY

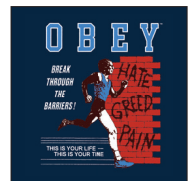
S M L XL XXL



WHITE



BLACK



NAVY

D1 - CLASSIC TEE

**OBEY ICON**

**166913611**

DESCRIPTION: HEAVYWEIGHT BOX FIT T-SHIRT

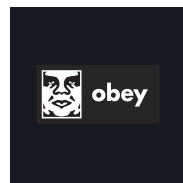
CONTENT: 100% COTTON

IRISH CREAM, OFF BLACK, ADVENTURE GREEN, WHITE

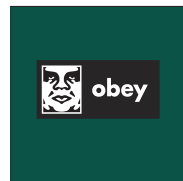
**S M L XL XXL**



IRISH CREAM



OFF BLACK



ADVENTURE GREEN



WHITE

D1 - HEAVYWEIGHT TEE

**OBEY ETCH**

**166913613**

DESCRIPTION: HEAVYWEIGHT BOX FIT T-SHIRT

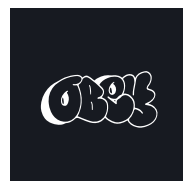
CONTENT: 100% COTTON

SEPIA, OFF BLACK, SURF BLUE, IRISH CREAM

**S M L XL XXL**



SEPIA



OFF BLACK



SURF BLUE



IRISH CREAM

D1 - HEAVYWEIGHT TEE

**OBEY RECORDS**

**166913612**

DESCRIPTION: HEAVYWEIGHT BOX FIT T-SHIRT

CONTENT: 100% COTTON

ADVENTURE GREEN, OFF BLACK, SEPIA

S M L XL XXL



OFF BLACK



SEPIA

ADVENTURE GREEN

D1 - HEAVYWEIGHT TEE

**OBEY BELIEVING IS SEEING**

**166913616**

DESCRIPTION: HEAVYWEIGHT BOX FIT T-SHIRT

CONTENT: 100% COTTON

SILVER GREY, DIGITAL LAVENDER, WHITE

S M L XL XXL



DIGITAL LAVENDER



WHITE

SILVER GREY

D1 - HEAVYWEIGHT TEE

**OBEY EYES MASK**

**166913615**

DESCRIPTION: HEAVYWEIGHT BOX FIT T-SHIRT

CONTENT: 100% COTTON

CORK, SILVER GREY, WHITE

**S M L XL XXL**



CORK



SILVER GREY



WHITE

D1 - HEAVYWEIGHT TEE

**OBEY SPIDER WEB**

**166913614**

DESCRIPTION: HEAVYWEIGHT BOX FIT T-SHIRT

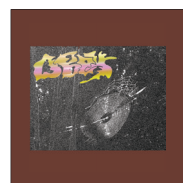
CONTENT: 100% COTTON

MULBERRY PURPLE, SEPIA, SAGO

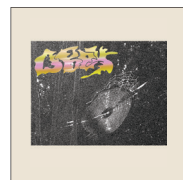
**S M L XL XXL**



MULBERRY PURPLE



SEPIA



SAGO

D1 - HEAVYWEIGHT TEE



**OBEY NO PAIN**

**167103609**

DESCRIPTION: HEAVYWEIGHT LONG SLEEVE BOX FIT T-SHIRT

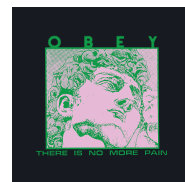
CONTENT: 100% COTTON

WHITE, OFF BLACK, IRISH CREAM

S M L XL XXL



WHITE



OFF BLACK



IRISH CREAM

D1 - HEAVYWEIGHT LONG SLEEVE TEE

**OBEY EYES MASK**

**167103615**

DESCRIPTION: HEAVYWEIGHT LONG SLEEVE BOX FIT T-SHIRT

CONTENT: 100% COTTON

CORK, SILVER GREY, WHITE

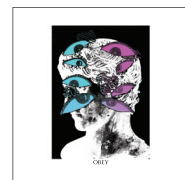
S M L XL XXL



CORK



SILVER GREY



WHITE

D1 - HEAVYWEIGHT LONG SLEEVE TEE

am  
上午 7  
pm  
下午



# SUSTAINABLE PRINTABLES



**OBEY FLOWER SKETCH**

**163003617**

DESCRIPTION: ORGANIC TEE

CONTENT: 100% ORGANIC COTTON

DIGITAL LAVENDER, FADED BLACK, SAGO

S M L XL XXL



DIGITAL LAVENDER



FADED BLACK



SAGO

D1 - ORGANIC TEE

**OBEY DREAMS**

**163003620**

DESCRIPTION: ORGANIC TEE

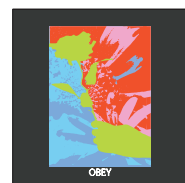
CONTENT: 100% ORGANIC COTTON

SEPIA, FADED BLACK, SAGO

S M L XL XXL



SEPIA



FADED BLACK



SAGO

D1 - ORGANIC TEE

**OBEY FIG**

**163003618**

DESCRIPTION: ORGANIC TEE

CONTENT: 100% ORGANIC COTTON

SAGO, SEPIA, ADVENTURE GREEN

S M L XL XXL



SAGO



SEPIA



ADVENTURE GREEN

D1 - ORGANIC TEE

**OBEY LEAVE ME ALONE**

**163003619**

DESCRIPTION: ORGANIC TEE

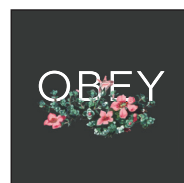
CONTENT: 100% ORGANIC COTTON

CORK, FADED BLACK, SAGO

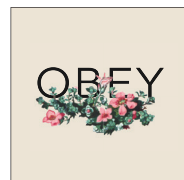
S M L XL XXL



CORK



FADED BLACK



SAGO

D1 - ORGANIC TEE