



OBEY

Fall 2023



The OBEY campaign can be explained as an experiment in phenomenology.

The first aim of phenomenology is to reawaken a sense of wonder about one's environment. The OBEY campaign attempts to stimulate curiosity and bring people to question both the campaign and their relationship with their surroundings. Because people are not used to seeing advertisements or propaganda for which the motive is not obvious, frequent and novel encounters with OBEY propaganda provoke thought and possible frustration, nevertheless revitalizing the viewer's perception and attention to detail. To catalyze a thoughtful dialogue deconstructing the process of image absorption is the ultimate goal. All in the name of fun and observation.

The medium is the message.

HISTORY

1989

OG sticker – What started as a joke, became an obsession. First showing up in Providence, Rhode Island, the image quickly spread down the east coast and beyond. To date, over ten million stickers have been proliferated worldwide.

1990

OBEY Campaign - Inspired by John Carpenter's cult classic film *They Live*, the slogan OBEY was adopted to accompany the image. "It was totally campy, but I really liked the subversive elements of it, how people are slaves to consumerism because everything is glossy on the surface."

1995

OBEY Icon Face - Shepard stylizes the icon face evolving away from the OG sticker. Influenced by George Orwell's "Big Brother" image, the streamlined graphic approach of the Russian Constructivist poster, and Barbara Kruger's use of font and color, a new phase of the story emerges.

1995

Subliminal Projects – A multi-functional project space and gallery established by Shepard, skateboarder Blaize Blouin, and designer and DJ Alfred Hawkins as a way to introduce skateboard culture and design to the art world. Established on the east coast but eventually settling in LA, Subliminal Projects remains a space that champions emerging artists.

1996

East to West – Shepard Fairey closes screen printing shop in Providence, Rhode Island, and moves to San Diego, California to pursue graphic design and art.

1998

Burgeoning gallery career - Shepard's work begins to receive recognition on larger scale. Street art begins to build relevance amongst fans and collectors, opening up avenues in fine art galleries and other outlets.

2000

OBEY Clothing - Making OBEY T-shirts throughout his career, Shepard partners to expand the reach of his images on clothing. As a populist in nature, the idea to spread his message further through a new medium is launched.

2003

Studio Number One is founded by Shepard and Amanda Fairey – Deeply embedded with Fairey's DNA, Studio Number One design studio challenges how people think about their surroundings through bold marketing and advertising

HISTORY

2004

Swindle Magazine - Partnering with Roger Gastman, the magazine featured pop culture and lifestyle content around music, fashion, and the arts. Covers included the likes of Henry Rollins, Banksy, Twist, and more.

2006

Supply & Demand: The Art of Shepard Fairey is published, a retrospective look at Shepard's career to that point. In its third printing, the book covers his work to date in addition to essays and commentary from Fairey's contemporaries and those around in the early years.

2007

OBEY Awareness - OBEY Clothing launches the Awareness Campaign supporting non-profits through the production of T-shirts and donation of funds to organizations that fit the ideals and messaging of the brand.

2008

HOPE Poster – Motivated by his own civic responsibility, Shepard uses his skills to create a poster illustration of then-presidential candidate Barack Obama with the word HOPE underneath. The image becomes the predominately recognized image of the campaign, eventually being inducted into the National Portrait Gallery in Washington.

2010

Mayday – The final gallery show at Deitch Projects in Lower Manhattan, Mayday was an exhibition of primarily portraits of revolutionaries in the way of artists, musicians, and political activists.

2010

Exit Through The Giftshop – Shepard is heavily featured in the documentary by his friend, renowned street artist, Banksy. The film anchors street art in the culture of the day.

2015

OBEY Clothing Ideals – wanting to improve its oversight in sourcing and manufacturing, OBEY Clothing starts working with Fair Trade in addition to resourcing more organic, recycled and sustainable product through materials and transport. As an ongoing mission to improve, Ideals is an open-ended project that evolves as new opportunities become available. (2021 GOTS certification).

2017

We The People, Women's March – In collaboration with Amplifier, Shepard creates iconic protest art with messages including "Defend Dignity," "Greater Than Fear," and "Protect Each Other" celebrating and lifting up marginalized people.

HISTORY

2017

OBEY Giant Documentary - Hulu releases a documentary film, OBEY Giant: The Art and Dissent of Shepard Fairey on the life and career of Shepard, spanning the nearly 30 years of his career.

2017

DAMAGED - In conjunction with Library Street Collective, the DAMAGED exhibition launches in LA. The show focuses primarily on critical issues in society. As Shepard states, "DAMAGED is an honest diagnosis, but diagnosis is the first step to recognizing and solving problems."

2019

Facing The Giant – 3 Decades of Dissent celebrates 30 Years of OBEY. The show highlights a number of distinct works from each of the 3 decades of Shepard's OBEY art campaign repurposed or offered in a new format.

2019

100th Mural – Shepard completes his 100th mural in Providence, Rhode Island. Creativity, Equality, Justice is completed with support and inspiration from non-profit artist space AS220.



This icon indicates that this garment is unisex.



This icon indicates that this garment is constructed sustainably. More than just sustainable raw materials, we consider the social environment, and economic impact of its production.



This icon indicates that this garment is constructed with organic cotton. Certified organic cotton following strict regulations without the use of GMO's harmful pesticides, or synthetic fertilizers.



Fair Trade USA's Fair Trade Certified™ label empowers you, the consumer, with the knowledge that your purchase has a positive impact on the people who sew and grow the products you love.

For every OBEY Fair Trade Certified™ product sold, a percentage is paid directly to a special fund for the workers that create our goods. They decide collectively how to spend these funds based on their communities greatest needs: from scholarships, school buses, to medical care, disaster and relief services.



This icon indicates that this garment is constructed with recycled materials. Per t-shirt, 1.6 recycled plastic bottles and .10lbs of recycled cotton are used.

Reduce, Reuse, Recycle!



This icon indicates that this garment is GOTS certified. This product is sustainably sourced from seed to finished product, through environmentally and socially responsible manufacturing, and is certified by Global Organic Textile Standard.

TABLE OF CONTENTS

FALL 2023

DELIVERY 1

8	21	26	31
SHEPARD FAIREY COLLECTION	ICON COLLECTION	PIGMENT COLLECTION	BIGWIG COLLECTION
36	43	46	49
DENIM COLLECTION	JACKETS / SHACKETS	PREMIUM FLEECE OUTERWEAR	SWEATERS
53	59	62	67
TOPS	FLEECE	ASSORTED BOTTOMS	BIG TIMER BOTTOMS
106	90	103	107
EASY ELASTIC BOTTOMS	HEADWEAR	BAGS	SOCKS
110	116	125	138
ACCESSORIES	CORE PRINTABLES	LIFESTYLE PRINTABLES	SUSTAINABLE PRINTABLES

DELIVERY 2

74	78	81	87
JACKETS	PREMIUM FLEECE OUTERWEAR	TOPS	FLEECE
142	154		
LIFESTYLE PRINTABLES	SUSTAINABLE PRINTABLES		



SHEPARD FAIREY COLLECTION

RISE ABOVE

SHEPARD FAIREY

ARTIST - ACTIVIST

Shepard Fairey, founder of OBEY and OBEY Clothing, was born in Charleston, South Carolina. He received his Bachelor of Fine Arts in Illustration at the Rhode Island School of Design in Providence, Rhode Island. In 1989 he created the "Andre the Giant has a Posse" sticker that transformed into the OBEY GIANT art campaign, with imagery that has changed the way people see art and the urban landscape. After 29 years, his work has evolved into an acclaimed body of art, which includes the 2008 "Hope" portrait of Barack Obama, found at the Smithsonian's National Portrait Gallery. The artist collaborated with Amplifier in 2017 to create the We The People series recognizable during the Women's Marches and other rallies around the world in defense of national and global social justice issues.

Fairey's stickers, guerilla street art presence, and 85 plus public murals are recognizable worldwide. His works are in the permanent collections of the Museum of Modern Art (MoMA), the Victoria and Albert Museum, the Smithsonian's National Portrait Gallery, the Boston Institute of Contemporary Art, the San Francisco Museum of Modern Art, and many others.

Fairey's distinct and recognizable style is unique to him and to OBEY. His lifestyle is the catalyst for all the brand does and the center point of influence and inspiration. This section isolates his work, from his classic graphic style to fine art renderings on garments. Each season, Shepard tackles new ideas and adds his special touch that makes OBEY what it is.

We hope you enjoy.

OBEY URBAN RENEWAL

165263589

DESCRIPTION: CLASSIC FIT T-SHIRT

CONTENT: 100% COTTON

BROWN SUGAR, BLACK, WHITE

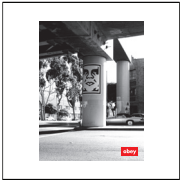
S M L XL XXL



BROWN SUGAR



BLACK



WHITE

D1 - SHEPARD FAIREY COLLECTION - CLASSIC TEE

OBEY RIOT COP

165263590

DESCRIPTION: CLASSIC FIT T-SHIRT

CONTENT: 100% COTTON

FOREST GREEN, BLACK, WHITE

S M L XL XXL



FOREST GREEN



BLACK



WHITE

D1 - SHEPARD FAIREY COLLECTION - CLASSIC TEE

OBEY NYC SMOG

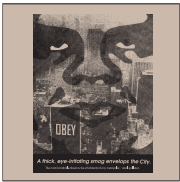
165263595

DESCRIPTION: CLASSIC FIT T-SHIRT

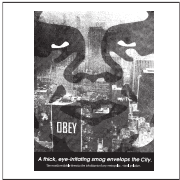
CONTENT: 100% COTTON

BLACK, SAND, WHITE

S M L XL XXL



SAND



WHITE

BLACK

D1 - SHEPARD FAIREY COLLECTION - CLASSIC TEE

OBEY NEIGHBORHOOD WATCH

165263593

DESCRIPTION: CLASSIC FIT T-SHIRT

CONTENT: 100% COTTON

SILT, BLACK, WHITE

S M L XL XXL



BLACK



WHITE

SILT

D1 - SHEPARD FAIREY COLLECTION - CLASSIC TEE

OBEY BROKEN CLASS

165263592

DESCRIPTION: CLASSIC FIT T-SHIRT

CONTENT: 100% COTTON

NAVY, BLACK, WHITE

S M L XL XXL



BLACK



WHITE

NAVY

D1 - SHEPARD FAIREY COLLECTION - CLASSIC TEE

OBEY DOWNWARD SPIRAL

165263597

DESCRIPTION: CLASSIC FIT T-SHIRT

CONTENT: 100% COTTON

CUCUMBER, BLACK, WHITE

S M L XL XXL



BLACK



WHITE

CUCUMBER

D1 - SHEPARD FAIREY COLLECTION - CLASSIC TEE

OBEY PYRAMID

165263598

DESCRIPTION: CLASSIC FIT T-SHIRT

CONTENT: 100% COTTON

CREAM, BLACK, WHITE

S M L XL XXL



CREAM



BLACK



WHITE

D1 - SHEPARD FAIREY COLLECTION - CLASSIC TEE

OBEY BARBWIRE FLOWER

165263591

DESCRIPTION: CLASSIC FIT T-SHIRT

CONTENT: 100% COTTON

BLACK, CREAM, WHITE

S M L XL XXL



BLACK



CREAM



WHITE

D1 - SHEPARD FAIREY COLLECTION - CLASSIC TEE

OBEY A NEW DAY RISING

165263594

DESCRIPTION: CLASSIC FIT T-SHIRT

CONTENT: 100% COTTON

CITRUS, BLACK, WHITE

S M L XL XXL



CITRUS



BLACK



WHITE

D1 - SHEPARD FAIREY COLLECTION - CLASSIC TEE

OBEY PEACE EAGLE

165263596

DESCRIPTION: CLASSIC FIT T-SHIRT

CONTENT: 100% COTTON

WHITE, BLACK, CREAM

S M L XL XXL



WHITE



BLACK



CREAM

D1 - SHEPARD FAIREY COLLECTION - CLASSIC TEE

OBHEY BARBWIRE FLOWER

163003591

DESCRIPTION: ORGANIC TEE

CONTENT: 100% ORGANIC COTTON

SAGO, FADED BLACK, DIGITAL LAVENDER

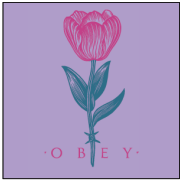
XS S M L XL XXL



SAGO



FADED BLACK



DIGITAL LAVENDER

D1 - SHEPARD FAIREY COLLECTION - ORGANIC TEE

OBHEY BROKEN CLASS

163003592

DESCRIPTION: ORGANIC TEE

CONTENT: 100% ORGANIC COTTON

DEEP LAGOON, FADED BLACK, SAGO

XS S M L XL XXL



DEEP LAGOON



FADED BLACK



SAGO

D1 - SHEPARD FAIREY COLLECTION - ORGANIC TEE

OBEY DOWNWARD SPIRAL

163003597

DESCRIPTION: ORGANIC TEE

CONTENT: 100% ORGANIC COTTON

ADVENTURE GREEN, FADED BLACK, SAGO

XS S M L XL XXL



ADVENTURE GREEN



FADED BLACK



SAGO

D1 - SHEPARD FAIREY COLLECTION - ORGANIC TEE

OBEY PYRAMID

163003598

DESCRIPTION: ORGANIC TEE

CONTENT: 100% ORGANIC COTTON

FADE BLACK, SEPIA, SAGO

XS S M L XL XXL



FADED BLACK



SEPIA



SAGO

D1 - SHEPARD FAIREY COLLECTION - ORGANIC TEE

OBEY A NEW DAY RISING

163003594

DESCRIPTION: ORGANIC TEE

CONTENT: 100% ORGANIC COTTON

SAGO, FADED BLACK, CORK

XS S M L XL XXL



SAGO



FADED BLACK



CORK

D1 - SHEPARD FAIREY COLLECTION - ORGANIC TEE

OBEY NEIGHBORHOOD WATCH

163003593

DESCRIPTION: ORGANIC TEE

CONTENT: 100% ORGANIC COTTON

ADVENTURE GREEN, FADED BLACK, SAGO

XS S M L XL XXL



ADVENTURE GREEN



FADED BLACK



SAGO

D1 - SHEPARD FAIREY COLLECTION - ORGANIC TEE

OBEY BARBWIRE FLOWER

112843591

DESCRIPTION: PREMIUM FLEECE HOOD

CONTENT: 58% COTTON 42% POLYESTER

BLACK, UNBLEACHED

XS S M L XL XXL



UNBLEACHED

BLACK

D1 - SHEPARD FAIREY COLLECTION - PREMIUM HOOD

OBEY NEIGHBORHOOD WATCH

112843593

DESCRIPTION: PREMIUM FLEECE HOOD

CONTENT: 58% COTTON 42% POLYESTER

SEPIA, BLACK

XS S M L XL XXL



BLACK

SEPIA

D1 - SHEPARD FAIREY COLLECTION - PREMIUM HOOD

BASTARDS LEATHER JACKET

121800233

DESCRIPTION: MOTORCYCLE REAL LEATHER JACKET WITH SILVER HARDWARE

CONTENT: 100% LEATHER

BLACK

S M L XL XXL



BLACK

SHEPARD FAIREY COLLECTION - ESSENTIALS

BASTARDS PU JACKET

121800239

DESCRIPTION: PU LEATHER MOTORCYCLE JACKET WITH SILVER HARDWARE

CONTENT: 100% PU LEATHER

BLACK

S M L XL XXL



BLACK

SHEPARD FAIREY COLLECTION - ESSENTIALS

OBHEY BARBWIRE FLOWER

100553591

DESCRIPTION: JUMBO TOTE BAG

CONTENT: 100% COTTON

NATURAL, BLACK

O/S



NATURAL



BLACK

SHEPARD FAIREY COLLECTION - ESSENTIALS

COVERT TO OVERT BOOK

326000035M

DESCRIPTION: COVERT TO OVERT SHOWCASES SHEPARD FAIREY'S EVOLUTION FROM WORKS ON PAPER TO GRANDER ART INSTALLATIONS, CROSS-CULTURAL WORKS, AND MUSIC/ART COLLABORATIONS

ASSORTED

O/S



ASSORTED

SHEPARD FAIREY COLLECTION - ESSENTIALS

ICON COLLECTION



FALL 2023 | HOLIDAY 2023

The OBEY Icon Collection represents the origins and iconography of OBEY from the past, to the present. This collection is embellished with the classic OBEY Icon Face that is a highly recognized image in streets and cities worldwide. This icon and its use in OBEY clothing represents and symbolizes the spirit of creativity, rebellion, and a question everything attitude. This collection of apparel is meant to celebrate our roots as a brand and a movement while also letting the OBEY Icon Face tear through the visual chaos of cities around the world.

The Medium is The Message

ICON EXTRA HEAVY HOOD II

112470196

FIT: REGULAR FIT

DESCRIPTION: EXTRA HEAVY WEIGHT HOODED FLEECE WITH EMBROIDERY

70% COTTON 30% POLYESTER

BLACK, SILVER GREY, SEPIA, PASSION FLOWER

XS S M L XL XXL



BLACK



SILVER GREY



SEPIA



PASSION FLOWER

D1 - ICON COLLECTION

ICON EXTRA HEAVY CREW II

112480139

FIT: BOXY FIT

DESCRIPTION: EXTRA HEAVY WEIGHT CREW FLEECE WITH EMBROIDERY

70% COTTON 30% POLYESTER

SILVER GREY, BLACK, DARK CEDAR

XS S M L XL XXL



SILVER GREY



BLACK



DARK CEDAR

D1 - ICON COLLECTION

ICON HEAVYWEIGHT TEE

166913013

DESCRIPTION: HEAVYWEIGHT BOX FIT T-SHIRT

CONTENT: 100% COTTON

SEPIA, OFF BLACK, MULBERRY PURPLE, SILVER GREY

S M L XL XXL



SEPIA



OFF BLACK



MULBERRY PURPLE



SILVER GREY

D1 - ICON COLLECTION

OBEY BOLD ICON HEAVYWEIGHT TEE

166913439

DESCRIPTION: HEAVYWEIGHT BOX FIT T-SHIRT

CONTENT: 100% COTTON

SILVER GREY, OFF BLACK, DIGITAL LAVENDER, WHITE

S M L XL XXL



SILVER GREY



OFF BLACK



DIGITAL LAVENDER



WHITE

D1 - ICON COLLECTION

ICON PATCH 6 PANEL STRAPBACK

100580303

FIT: CLASSIC FIT

DESCRIPTION: 6 PANEL STRAPBACK WITH OBEY ICON PATCH

100% COTTON

BLACK, ARMY, SILVER GREY

O/S



BLACK



ARMY



SILVER GREY

D1 - ICON COLLECTION

ICON PATCH CAMP HAT

100149101

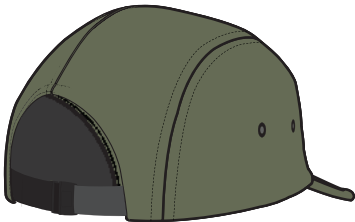
FIT: CLASSIC FIT

DESCRIPTION: NYLON CAMP CAP WITH OBEY PATCH

100% NYLON

ARMY, BLACK, SILVER GREY

O/S



ARMY



BLACK



SILVER GREY

D1 - ICON COLLECTION

MID ICON PATCH CUFF BEANIE

100030195

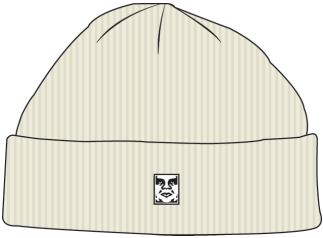
FIT: CLASSIC FIT

DESCRIPTION: MID BEANIE WITH OBEY PATCH

100% ACRYLIC

UNBLEACHED, BLACK, ARMY

O/S



UNBLEACHED



BLACK



ARMY

D1 - ICON COLLECTION

ICON PATCH CUFF BEANIE

100030198

FIT: CLASSIC FIT

DESCRIPTION: CUFF BEANIE WITH OBEY PATCH

100% ACRYLIC

PASSION FLOWER, BLACK, ARMY, UNBLEACHED

O/S



PASSION FLOWER



BLACK



ARMY



UNBLEACHED

D1 - ICON COLLECTION

PIGMENT COLLECTION

FALL 2023 | HOLIDAY 2023

The OBEY Pigment Collection represents a grouping of high quality, premium fabrics, pigment garment dyed in classic silhouettes in seasonal colors. These colors have a dusty dyed effect that will change and evolve the more you wear and wash the pieces, giving each piece unique one of a kind characteristics. These premium dyed garments are meant to be classic pieces, embellished with core OBEY branding and iconography to create long lasting, timeless garments that can be worn for comfort now and for years to come.

The Medium is The Message

LOWERCASE PIGMENT HOOD

112470194

FIT: REGULAR FIT

DESCRIPTION: PIGMENT DYED EXTRA HEAVY WEIGHT HOODED FLEECE WITH EMBROIDERY

100% COTTON

PIGMENT DIGITAL BLACK, PIGMENT JAVA BROWN, PIGMENT PASSION FLOWER, PIGMENT CLAY

XS S M L XL XXL



PIGMENT DIGITAL BLACK



PIGMENT JAVA BROWN



PIGMENT PASSION FLOWER



PIGMENT CLAY

D1 - PIGMENT COLLECTION

LOWERCASE PIGMENT ZIP HOOD

112460019

FIT: REGULAR FIT

DESCRIPTION: PIGMENT DYED EXTRA HEAVY WEIGHT HOODED FLEECE WITH EMBROIDERY

100% COTTON

PIGMENT JAVA BROWN, PIGMENT DIGITAL BLACK, PIGMENT ACADEMY NAVY

XS S M L XL XXL



PIGMENT JAVA BROWN



PIGMENT DIGITAL BLACK



PIGMENT ACADEMY NAVY

D1 - PIGMENT COLLECTION

LOWERCASE PIGMENT CREW

112480138

FIT: REGULAR FIT

DESCRIPTION: PIGMENT DYED EXTRA HEAVY WEIGHT CREW FLEECE WITH EMBROIDERY

100% COTTON

PIGMENT CLAY, PIGMENT ACADEMY NAVY, PIGMENT AVENTURINE GREEN

XS S M L XL XXL



PIGMENT CLAY



PIGMENT ACADEMY NAVY



PIGMENT AVENTURINE GREEN

D1 - PIGMENT COLLECTION

LOWERCASE PIGMENT SWEATPANT

142030046

FIT: REGULAR FIT

DESCRIPTION: PIGMENT DYED EXTRA HEAVY WEIGHT SWEATPANT WITH EMBROIDERY

100% COTTON

PIGMENT DIGITAL BLACK, PIGMENT JAVA BROWN, PIGMENT CLAY

XS S M L XL XXL



PIGMENT DIGITAL BLACK



PIGMENT JAVA BROWN



PIGMENT CLAY

D1 - PIGMENT COLLECTION

LOWERCASE PIGMENT POLO

111620088

FIT: REGULAR FIT

DESCRIPTION: PIGMENT DYED EXTRA HEAVY WEIGHT POLO WITH EMBROIDERY

100% COTTON

PIGMENT AVENTURINE GREEN, PIGMENT DIGITAL BLACK, PIGMENT CLAY

XS S M L XL XXL



PIGMENT AVENTURINE GREEN



PIGMENT DIGITAL BLACK



PIGMENT CLAY

D1 - PIGMENT COLLECTION

LOWERCASE PIGMENT THERMAL LS

131030128

FIT: REGULAR FIT

DESCRIPTION: LONG SLEEVE THERMAL WITH OBEY EMBROIDERY

100% COTTON

PIGMENT JAVA BROWN, PIGMENT AVENTURINE GREEN, PIGMENT CLAY

XS S M L XL XXL



PIGMENT JAVA BROWN



PIGMENT AVENTURINE GREEN



PIGMENT CLAY

D1 - PIGMENT COLLECTION

LOWERCASE PIGMENT TEE SS

131080353

FIT: REGULAR FIT

DESCRIPTION: EXTRA HEAVY WEIGHT HOODED FLEECE WITH EMBROIDERY

100% COTTON

PIGMENT PASSION FLOWER, PIGMENT DIGITAL BLACK, PIGMENT AVENTURINE GREEN, PIGMENT CLAY

XS S M L XL XXL



PIGMENT PASSION FLOWER



PIGMENT DIGITAL BLACK



PIGMENT AVENTURINE GREEN



PIGMENT CLAY

D1 - PIGMENT COLLECTION

BIGWIG COLLECTION

FALL 2023 / HOLIDAY 2023

The OBEY Bigwig Collection represents the freedom of BIG expression and BIG experimentation both in cut and sew as well as graphics and art. The energy of the Bigwig collection is a place where a person can experiment, create, play, and mix concepts and garment proportions and graphics that are more fringe and different from the norm. It's currently a home for giant pants and fringe tee graphics paired with more subtle cut and sew pieces that represent the sub cultures and styles we are inspired by.

The ideas are youthful in spirit and energy. They are often eye catching, fringe or experimental in their expression or proportions. This collection is inspired by decades of youth energy, creative cultures and the spirit of underground scenes both past and present. For OBEY the BIGWIG collection represents the roots we came from and the creative journey we are on. It is a place where we take this creative energy, blend it together and hopefully inspire others.

The Medium is The Message

BIGWIG BAGGY DENIM

142010087

FIT: BAGGY FIT

DESCRIPTION: BAGGY FIT 5 POCKET DENIM

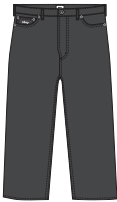
100% COTTON

JAVA BROWN, FADED BLACK, STONE WASH INDIGO, LIGHT INDIGO

26 27 28 29 30 31 32 33 34 36 38



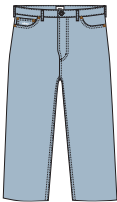
JAVA BROWN



FADED BLACK



STONE WASH INDIGO



LIGHT INDIGO

D1 - BIGWIG COLLECTION

BIGWIG DENIM CARPENTER PANT

142010093

FIT: BAGGY FIT

DESCRIPTION: BAGGY FIT DENIM CARPENTER PANT

100% COTTON

LAUREL WREATH, DIGITAL BLACK, JAVA BROWN, LIGHT INDIGO

26 27 28 29 30 31 32 33 34 36 38



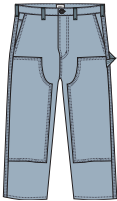
LAUREL WREATH



DIGITAL BLACK



JAVA BROWN



LIGHT INDIGO

D1 - BIGWIG COLLECTION

BIG WIG CARGO DENIM PANT

142010094

FIT: RELAXED FIT

DESCRIPTION: BIG FIT 5 CARGO DENIM PANT

100% COTTON

STONE WASH, LIGHT INDIGO, JAVA BROWN, CLAY

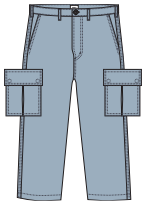
26 27 28 29 30 31 32 33 34 36 38



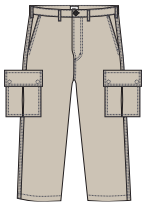
STONE WASH



JAVA BROWN



LIGHT INDIGO



CLAY

D1 - BIGWIG COLLECTION

BIGWIG BAGGY CORDUROY PANT

142020218

FIT: BAGGY FIT

DESCRIPTION: BAGGY FIT 5 POCKET CORDUROY PANT

100% COTTON

DIGITAL BLACK, JAVA BROWN, CATECHU WOOD

28 29 30 31 32 33 34 36 38



DIGITAL BLACK



JAVA BROWN



CATECHU WOOD

D1 - BIGWIG COLLECTION

BIGWIG BAGGY TWILL CARGO PANT

142020217

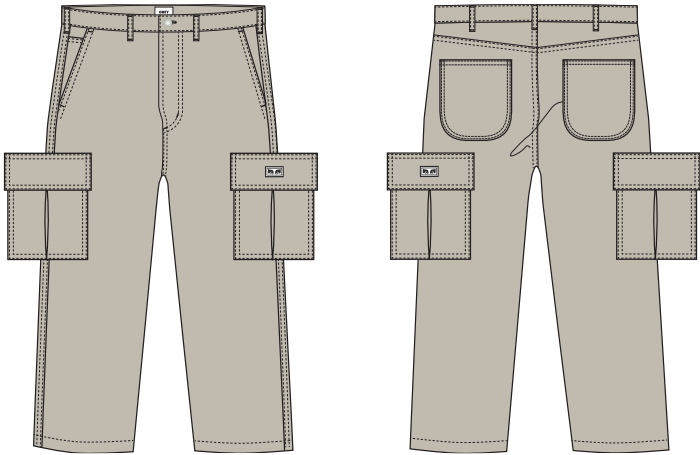
FIT: BAGGY FIT

DESCRIPTION: BAGGY FIT TWILL CARGO PANT

100% COTTON

SILVER GREY, BLACK, JAVA BROWN

28 29 30 31 32 33 34 36 38



SILVER GREY



BLACK



JAVA BROWN

D1 - BIGWIG COLLECTION

BIGWIG BAGGY CORDUROY CARGO PANT

142020216

FIT: BAGGY FIT

DESCRIPTION: BAGGY FIT CORDUROY CARGO PANT

100% COTTON

ARMY, DIGITAL BLACK, JAVA BROWN

28 29 30 31 32 33 34 36 38



ARMY



DIGITAL BLACK



JAVA BROWN

D1 - BIGWIG COLLECTION

BIGWIG PLAID WOVEN

181200368

FIT: BAGGY FIT

DESCRIPTION: PLAID LS WOVEN WITH OBEY EMBROIDERY

100% COTTON

SURF BLUE MULTI, SEPIA MULTI

S M L XL XXL



SEPIA MULTI

SURF BLUE MULTI

D1 - BIGWIG COLLECTION

BIGWIG MICRO PLAID WOVEN

181200374

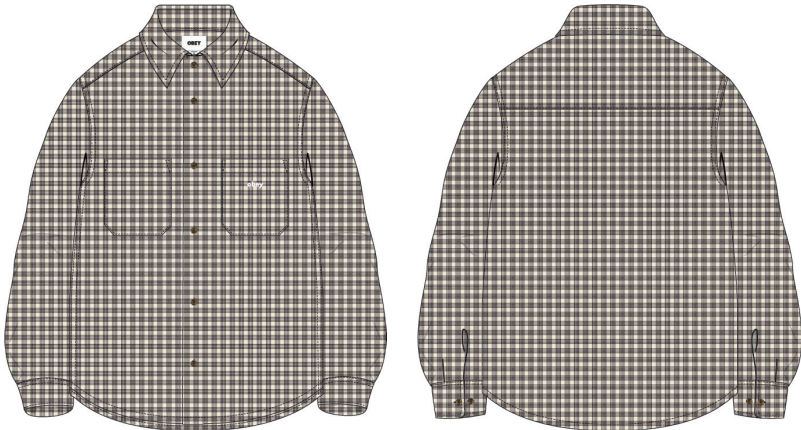
FIT: BAGGY FIT

DESCRIPTION: MICRO PLAID LS WOVEN WITH OBEY EMBROIDERY

100% COTTON

UNBLEACHED MULTI, SILVER GREY MULTI

S M L XL XXL



SILVER GREY MULTI

UNBLEACHED MULTI

D1 - BIGWIG COLLECTION

DENIM COLLECTION

FALL 2023 | HOLIDAY 2023

a The OBEY Denim Collection represents a diverse grouping of OBEY denim bottoms, jackets, and shirts in a variety of fits and shapes. We believe that OBEY denim and the diversity in our denim shillouttes is meant as a vehicle for your own personal style and mens self expression. The beauty of denim is how it wears and changes over time to create is own one of a kind characteristics just like you.

The Medium is The Message.

WORK AROUND JACKET

121800541

FIT: RELAXED FIT

DESCRIPTION: QUILTED JACKET WITH ACCENT COLLAR AND LABEL

100% COTTON

FADED BLACK, LIGHT INDIGO

S M L XL XXL



LIGHT INDIGO

FADED BLACK

D1 - DENIM COLLECTION

MILTON SHIRT JACKET

121160048

FIT: REGULAR FIT

DESCRIPTION: BUTTON SHIRT JACKET WITH STRIP LABEL

100% COTTON

LIGHT INDIGO, FADED BLACK, CLAY

S M L XL XXL



FADED BLACK



CLAY

LIGHT INDIGO

D1 - DENIM COLLECTION

MAGNOLIA SHIRT

181200367

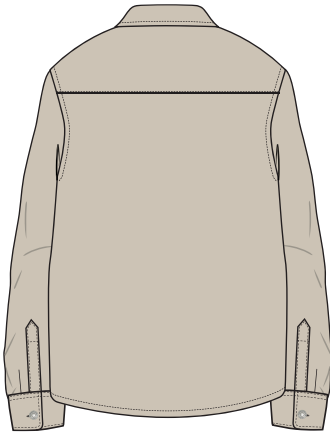
FIT: REGULAR FIT

DESCRIPTION: WOVEN SHIRT WITH EMBROIDERY AT CHEST POCKET

100% COTTON

CLAY, PURPLE ROSE, LIGHT INDIGO

S M L XL XXL



CLAY



PURPLE ROSE



LIGHT INDIGO

D1 - DENIM COLLECTION

BENDER DENIM

142010080

FIT: STANDARD FIT

DESCRIPTION: STANDARD FIT 5 POCKET DENIM

100% COTTON

FADED BLACK, STONEWASH INDIGO, LIGHT INDIGO

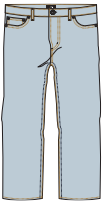
26 27 28 29 30 31 32 33 34 36 38



FADED BLACK



STONEWASH INDIGO



LIGHT INDIGO

D1 - DENIM COLLECTION

HARDWORK DENIM

142010077

FIT: RELAXED FIT

DESCRIPTION: RELAXED FIT BUTTON FLY DENIM WITH EYES LABELING

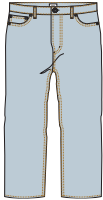
100% COTTON

STONEWASH INDIGO, LIGHT INDIGO, FADED BLACK

26 27 28 29 30 31 32 33 34 36 38



STONEWASH INDIGO



LIGHT INDIGO



FADED BLACK

D1 - DENIM COLLECTION

HARDWORK CARPENTER DENIM

142010078

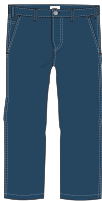
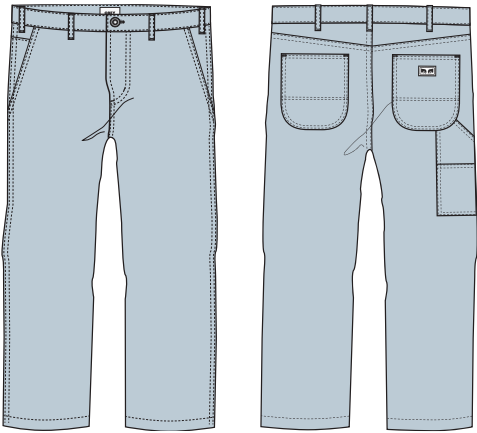
FIT: RELAXED FIT

DESCRIPTION: DENIM CARPENTER PANT

100% COTTON

LIGHT INDIGO, STONEWASH INDIGO

26 27 28 29 30 31 32 33 34 36 38



STONEWASH INDIGO

LIGHT INDIGO

D1 - DENIM COLLECTION

FUBAR PLEATED DENIM

142010082

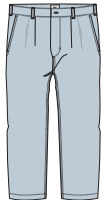
FIT: RELAXED FIT

DESCRIPTION: RELAXED FIT DENIM PANTS

100% COTTON

FADED BLACK, LIGHT INDIGO

26 27 28 29 30 31 32 33 34 36 38



LIGHT INDIGO

FADED BLACK

D1 - DENIM COLLECTION

EASY DENIM PANT

142010079

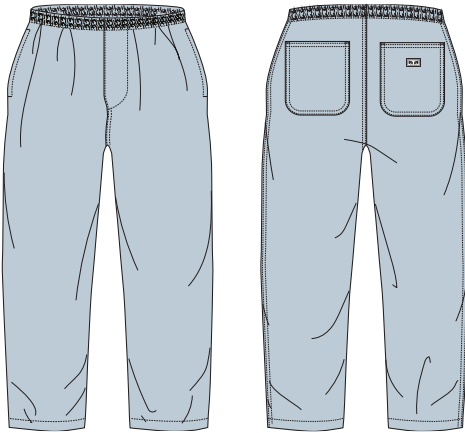
FIT: RELAXED FIT

DESCRIPTION: ELASTIC WAIST PATCH POCKET DENIM PANT

100% COTTON

LIGHT INDIGO, FADED BLACK

XS S M L XL XXL



LIGHT INDIGO



FADED BLACK

D1 - DENIM COLLECTION

FALL 2023

DELIVERY ONE



JACKETS + SHACKETS

LEIMERT JACKET

121800540

FIT: REGULAR FIT

DESCRIPTION: CORDUROY ZIP UP JACKET WITH BACK GRAPHIC

100% COTTON

CLAY, DARK BROWN

S M L XL XXL



CLAY



DARK BROWN

D1 - JACKETS / SHACKETS

CHISEL JACKET

121800543

FIT: REGULAR FIT

DESCRIPTION: INSULATED AND QUILTED WORK JACKET WITH CORD COLLAR

100% POLYESTER

JAVA BROWN MULTI, DARK CEDAR MULTI

S M L XL XXL



JAVA BROWN MULTI



DARK CEDAR MULTI

D1 - JACKETS / SHACKETS

CHARLIE JACKET

121800546

FIT: REGULAR FIT

DESCRIPTION: QUILTED PUFFER WITH LOGO PRINT

100% NYLON

BLACK, SEPIA, SILVER GREY

XS S M L XL XXL



BLACK



SEPIA



SILVER GREY

D1 - JACKETS / SHACKETS

BENNY CORD SHIRT JACKET

121160050

FIT: REGULAR FIT

DESCRIPTION: CORDUROY SHIRT JACKET

100% COTTON

DARK CEDAR, IRISH CREAM

S M L XL XXL



DARK CEDAR



IRISH CREAM

D1 - JACKETS / SHACKETS



**PREMIUM
FLEECE
OUTERWEAR**

STACK EXTRA HEAVY HOOD

112470197

FIT: REGULAR FIT

DESCRIPTION: EXTRA HEAVY WEIGHT HOODED FLEECE WITH EMBROIDERY

70% COTTON 30% POLYESTER

BLACK, AVENTURINE GREEN

XS S M L XL XXL



BLACK



AVENTURINE GREEN

D1 - PREMIUM FLEECE OUTERWEAR

BOLD POLAR FLEECE HOOD

112470193

FIT: REGULAR FIT

DESCRIPTION: POLAR FLEECE HOOD WITH OBEY EMBROIDERY

100% POLYESTER

SILVER GREY, BLACK, DIGITAL LAVENDER

S M L XL XXL



SILVER GREY



BLACK



DIGITAL LAVENDER

D1 - PREMIUM FLEECE OUTERWEAR

THOMPSON SHIRT JACKET

121160047

FIT: REGULAR FIT

DESCRIPTION: POLAR FLEECE SHIRT JACKET WITH OBEY EMBROIDERY

100% POLYESTER

SURF BLUE, JAVA BROWN, UNBLEACHED

S M L XL XXL



SURF BLUE



JAVA BROWN



UNBLEACHED

D1 - PREMIUM FLEECE OUTERWEAR

RAYS MOCK NECK

121800538

FIT: REGULAR FIT

DESCRIPTION: POLAR FLEECE MOCK NECK WITH OBEY LABEL

100% POLYESTER

UNBLEACHED, SEPIA

S M L XL XXL



UNBLEACHED



SEPIA

D1 - PREMIUM FLEECE OUTERWEAR

SWEATERS



PALLY CARDIGAN

151010034

FIT: REGULAR FIT

DESCRIPTION: BRUSHED PATTERN CARDIGAN

100% ACRYLIC

BLACK MULTI, CATECHU WOOD MULTI

S M L XL XXL



BLACK MULTI



CATECHU WOOD MULTI

D1 - SWEATERS

PATRON CARDIGAN

151010025

FIT: REGULAR FIT

DESCRIPTION: TEXTURED CARDIGAN

50% ACRYLIC 25% NYLON 20% WOOL 5% ALPACA

JAVA BROWN, BLACK, SURF BLUE

S M L XL XXL



JAVA BROWN



BLACK



SURF BLUE

D1 - SWEATERS

THEO SWEATER

151000072

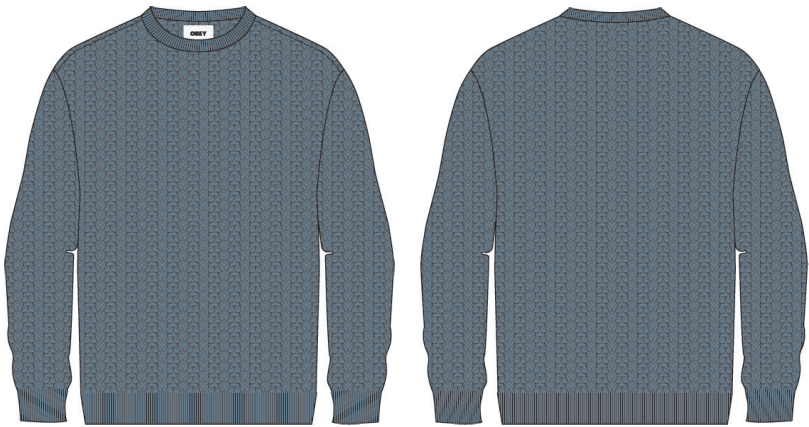
FIT: REGULAR FIT

DESCRIPTION: CHUNKY KNIT SWEATER

80% ACRYLIC 20% WOOL

PASTEL BLUE, CHESTNUT BROWN

S M L XL XXL



CHESTNUT BROWN

PASTEL BLUE

D1 - SWEATERS

OLIVER PATCHWORK SWEATER

151000074

FIT: REGULAR FIT

DESCRIPTION: PATCHWORK POLO SWEATER

80% ACRYLIC 20% WOOL

UNBLEACHED MULTI, BLACK MULTI

S M L XL XXL



BLACK MULTI

UNBLEACHED MULTI

D1 - SWEATERS

OBEY ALDEN SWEATER VEST

151000070

FIT: REGULAR FIT

DESCRIPTION: SWEATER VEST

80% ACRYLIC 20% WOOL

JAVA BROWN MULTI, UNBLEACHED MULTI

S M L XL XXL



JAVA BROWN MULTI



UNBLEACHED MULTI

D1 - SWEATERS



TOPS

LUKE WOVEN

181200371

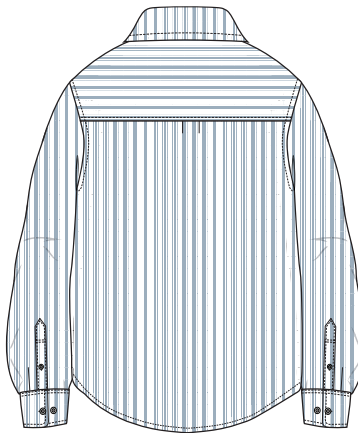
FIT: REGULAR FIT

DESCRIPTION: STRIPED OXFORD LS WOVEN WITH EMBROIDERY

100% COTTON

GOOD GREY MULTI, IRISH CREAM MULTI

S M L XL XXL



IRISH CREAM MULTI

GOOD GREY MULTI

D1 - TOPS

LENNY WOVEN

181200370

FIT: REGULAR FIT

DESCRIPTION: MICRO PLAID LS WOVEN WITH EMBROIDERY

100% COTTON

UNBLEACHED MULTI, ICEBERG GREEN MULTI

S M L XL XXL



ICEBERG GREEN MULTI

UNBLEACHED MULTI

D1 - TOPS

FRED WOVEN

181200369

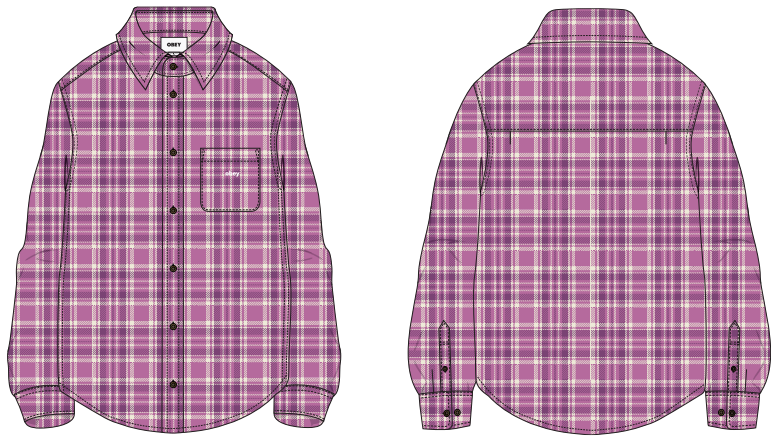
FIT: REGULAR FIT

DESCRIPTION: PLAID LS WOVEN WITH OBEY EMBROIDERY

100% COTTON

MULBERRY PURPLE MULTI, IRISH CREAM MULTI

S M L XL XXL



MULBERRY PURPLE MULTI



IRISH CREAM MULTI

D1 - TOPS

MILES WOVEN

181200372

FIT: REGULAR FIT

DESCRIPTION: CORDUROY LS WOVEN

100% COTTON

CATECHU WOOD, PURPLE ROSE, SILVER GREY

S M L XL XXL



CATECHU WOOD



PURPLE ROSE



SILVER GREY

D1 - TOPS

MINUS WOVEN

181200373

FIT: REGULAR FIT

DESCRIPTION: MILITARY WOVEN WITH SQUARE LABEL AT BOTTOM HEM

100% COTTON

BLACK, ARMY

S M L XL XXL



BLACK



ARMY

D1 - TOPS

WARREN STRIPE LS

131030129

FIT: REGULAR FIT

DESCRIPTION: LONG SLEEVE STRIPE TEE WITH OBEY EMBROIDERY

100% COTTON

ACADEMY NAVY MULTI, SILVER GREY MULTI

S M L XL XXL



SILVER GREY MULTI

ACADEMY NAVY MULTI

D1 - TOPS

MONTROSE STRIPE TEE SS

131080351

FIT: REGULAR FIT

DESCRIPTION: SHORT SLEEVE TEE WITH OBEY EMBROIDERY

100% COTTON

WHITE MULTI, BLACK MULTI

S M L XL XXL



BLACK MULTI

WHITE MULTI

D1 - TOPS

HOUND RINGER TEE SS

131080350

FIT: REGULAR FIT

DESCRIPTION: EMBROIDERED SHORT SLEEVE RINGER KNIT

100% COTTON

CLEAR SKY MULTI, WHITE MULTI

S M L XL XXL



CLEAR SKY MULTI



WHITE MULTI

D1 - TOPS

POINT POCKET TEE SS

131080287

FIT: REGULAR FIT

DESCRIPTION: CREW NECK POCKET TEE WITH OBEY LABEL

100% ORGANIC COTTON

BLACK, WHITE

S M L XL XXL



BLACK



WHITE

D1 - TOPS

A black and white photograph featuring a car's headlight in the lower-left corner. The background consists of a wall with a repeating pattern of stylized faces, each with a large, open mouth and a wide, toothy grin. The faces are rendered in high contrast, with black outlines and white interiors. The wall itself is made of a material with a grid of small, raised bumps. The word "FLEECE" is superimposed in the center of the image.

FLEECE

OBEY LOWERCASE HOOD

112470162

FIT: REGULAR FIT

DESCRIPTION: FLEECE HOOD WITH LOGO EMBROIDERY

58% COTTON 42% POLYESTER

BLACK, SURF BLUE, UNBLEACHED

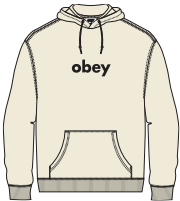
XS S M L XL XXL



BLACK



SURF BLUE



UNBLEACHED

D1 - SPECIALTY FLEECE

OBEY LOWER CASE CREW

112480125

FIT: REGULAR FIT

DESCRIPTION: FLEECE CREW WITH LOGO EMBROIDERY

58% COTTON 42% POLYESTER

AVENTURINE GREEN, BLACK, SILVER GREY

XS S M L XL XXL



AVENTURINE GREEN



BLACK



SILVER GREY

D1 - SPECIALTY FLEECE

CASE FLEECE VEST

111620091

FIT: REGULAR FIT

DESCRIPTION: FLEECE VEST

100% COTTON

WINEBERRY, BLACK

S M L XL XXL



WINEBERRY



BLACK

D1 - SPECIALTY FLEECE



ASSORTED BOTTOMS



STRAGGLER FLOODED PANT

142020113

FIT: STANDARD FIT

DESCRIPTION: FLOODED PANT

60% COTTON 39% POLYESTER 1% SPANDEX

BLACK, SEPIA BROWN, LEAF

26 27 28 29 30 31 32 33 34 36 38



BLACK



SEPIA BROWN



LEAF

D1 - BOTTOMS

STRAGGLER PANT

142020150

FIT: STANDARD FIT

DESCRIPTION: STRAIGHT LEG PANT

60% COTTON 39% POLYESTER 1% SPANDEX

SEPIA BROWN, BLACK, LEAF

26 27 28 29 30 31 32 33 34 36 38



SEPIA BROWN



BLACK



LEAF

D1 - BOTTOMS

HUGHES TWILL PANT

142020198

FIT: REGULAR FIT

DESCRIPTION: CASUAL TWILL PANT

100% COTTON

DULL BLUE, BLACK, FIELD GREEN

26 27 28 29 30 31 32 33 34 36 38



DULL BLUE



BLACK



FIELD GREEN

D1 - BOTTOMS

HARDWORK CARPENTER PANT

142020184

FIT: REGULAR FIT

DESCRIPTION: CARPENTER PANT

100% COTTON

DARK BROWN, BLACK, WHITE

26 27 28 29 30 31 32 33 34 36 38



DARK BROWN



BLACK



WHITE

D1 - BOTTOMS

ESTATE PANT

142020183

FIT: RELAXED FIT

DESCRIPTION: HEAVYWEIGHT TWILL PANT WITH SINGLE PLEAT FRONT

100% COTTON

SILVER PINE, BLACK, DARK BROWN, IRISH CREAM

26 27 28 29 30 31 32 33 34 36 38



SILVER PINE



BLACK



DARK BROWN



IRISH CREAM

D1 - BOTTOMS

ESTATE EMBROIDERED PANT

142020210

FIT: RELAXED FIT

DESCRIPTION: HEAVYWEIGHT TWILL PANT WITH SINGLE PLEAT FRONT

100% COTTON

BLACK, DARK BROWN, SILVER PINE

26 27 28 29 30 31 32 33 34 36 38



BLACK



DARK BROWN



SILVER PINE

D1 - BOTTOMS

FUBAR PLEATED PANT

142020201

FIT: RELAXED FIT

DESCRIPTION: RELAXED FIT PLEATED PANTS

60% POLYESTER 40% RAYON

BLACK, ROSIN, SEPIA

26 27 28 29 30 31 32 33 34 36 38



BLACK



ROSIN



SEPIA

D1 - BOTTOMS



BIG TIMER BOTTOMS

CLEAR CHANNEL



BIG TIMER TWILL DOUBLE KNEE CARPENTER PANT

142020211

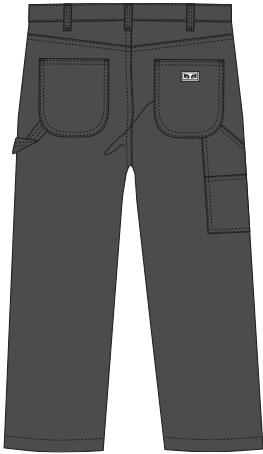
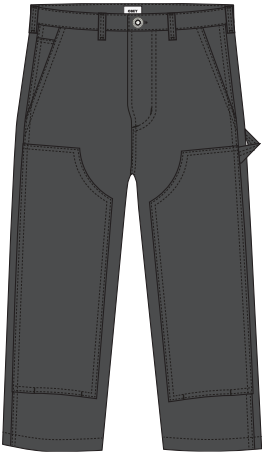
FIT: RELAXED FIT

DESCRIPTION: DOUBLE KNEE WORK PANTS WITH PATCH POCKETS

100% COTTON

BLACK, JAVA BROWN, CLAY

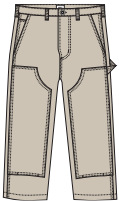
26 27 28 29 30 31 32 33 34 36 38



BLACK



JAVA BROWN



CLAY

D1 - BOTTOMS

BIG TIMER TWILL PRINTED CARPENTER PANT

1420202019

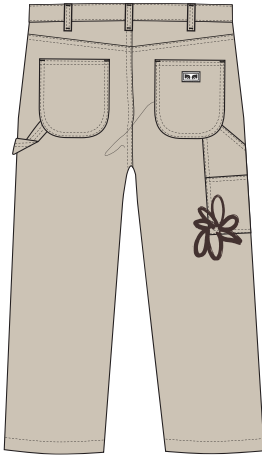
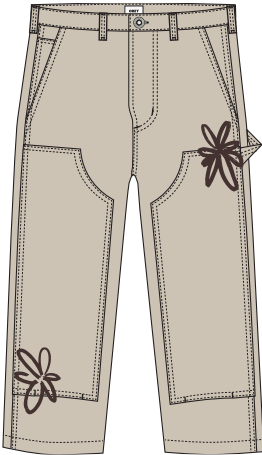
FIT: RELAXED FIT

DESCRIPTION: DOUBLE KNEE WORK PANTS WITH

100% COTTON

CLAY, DIGITAL BLACK

26 27 28 29 30 31 32 33 34 36 38



CLAY



DIGITAL BLACK

D1 - BOTTOMS

BIG TIMER CORD PANT

142020205

FIT: RELAXED FIT

DESCRIPTION: CORDUROY DOUBLE KNEE WORK PANT

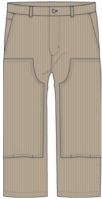
100% COTTON

JAVA BROWN, IRISH CREAM

28 29 30 31 32 33 34 36 38



JAVA BROWN



IRISH CREAM

D1 - BOTTOMS

BIG TIMER CARGO PANT

142020215

FIT: RELAXED FIT

DESCRIPTION: TWILL CARGO PANT WITH EYES LABEL

100% COTTON

OVERSIZE CAMO, DIGITAL BLACK, JAVA BROWN

28 29 30 31 32 33 34 36 38



OVERSIZE CAMO



DIGITAL BLACK



JAVA BROWN

D1 - BOTTOMS

rschule Kotti
uto & Motorrad



ATILA

ATIL
YEMINLI
BÜ

30

HÖR * DESIGN



SOMMERFEST
PROGRAMM 10. JUNI

7.00h FORMER FRANK TALKS J.P. LIP KAPPEL KAPPEL KAPPEL	14.00h WESTMAN ALFRED HENNING BENI HENNING KAPPEL KAPPEL KAPPEL
--	---

21. JUNI / FRANK TALKS
DANIEL & DANIEL
DANIEL & DANIEL
DANIEL & DANIEL
DANIEL & DANIEL
DANIEL & DANIEL

FREILUFTKINO KREUZBERG

PROGRAMM 10. JUNI

14.00h
THE POWER OF LOVE
THE POWER OF LOVE
THE POWER OF LOVE
THE POWER OF LOVE
THE POWER OF LOVE
THE POWER OF LOVE

TEQUILA BEER
DANIEL & DANIEL
DANIEL & DANIEL
DANIEL & DANIEL
DANIEL & DANIEL
DANIEL & DANIEL
DANIEL & DANIEL

IT'S STILL LAST NIGHT
DANIEL & DANIEL
DANIEL & DANIEL
DANIEL & DANIEL
DANIEL & DANIEL
DANIEL & DANIEL
DANIEL & DANIEL

FETE DE LA MUSIQUE
DANIEL & DANIEL
DANIEL & DANIEL
DANIEL & DANIEL
DANIEL & DANIEL
DANIEL & DANIEL
DANIEL & DANIEL

EASY ELASTIC BOTTOMS



The Power of Love
DANIEL & DANIEL
DANIEL & DANIEL
DANIEL & DANIEL
DANIEL & DANIEL
DANIEL & DANIEL
DANIEL & DANIEL

TIM & TONY
DANIEL & DANIEL
DANIEL & DANIEL
DANIEL & DANIEL
DANIEL & DANIEL
DANIEL & DANIEL
DANIEL & DANIEL

11.07
DANIEL & DANIEL
DANIEL & DANIEL
DANIEL & DANIEL
DANIEL & DANIEL
DANIEL & DANIEL
DANIEL & DANIEL

Wir sind Reiche bitte

SOPHIE SÆLE
DANIEL & DANIEL
DANIEL & DANIEL
DANIEL & DANIEL
DANIEL & DANIEL
DANIEL & DANIEL
DANIEL & DANIEL

DAS KAPITALISMUS-TRIBUNAL
1. 2. 3.
DANIEL & DANIEL
DANIEL & DANIEL
DANIEL & DANIEL
DANIEL & DANIEL
DANIEL & DANIEL
DANIEL & DANIEL

LYRIKMARKT
DANIEL & DANIEL
DANIEL & DANIEL
DANIEL & DANIEL
DANIEL & DANIEL
DANIEL & DANIEL
DANIEL & DANIEL

Bf 336
Bf 336

EASY TWILL PANT

142020142

FIT: RELAXED FIT

DESCRIPTION: ELASTIC WAIST TWILL PANT

100% COTTON

IRISH CREAM, BLACK, FIELD GREEN

XS S M L XL XXL



IRISH CREAM



BLACK



FIELD GREEN

EASY CORD PANT

142020195

FIT: RELAXED FIT

DESCRIPTION: WIDE WALE ELASTIC CORDUROY PANT

100% COTTON

DIGITAL BLACK, DARK CEDAR, SEPIA, IRISH CREAM

XS S M L XL XXL



DIGITAL BLACK



DARK CEDAR



SEPIA



IRISH CREAM

EASY RIPSTOP CARGO PANT

142020196

FIT: RELAXED FIT

DESCRIPTION: ELASTIC WAIST RIPSTOP CARGO PANT

100% COTTON

BLACK, FIELD GREEN, DARK BROWN

XS S M L XL XXL



BLACK



FIELD GREEN



DARK BROWN

D1 - BOTTOMS

BIG EASY CANVAS PANT

142020203

FIT: RELAXED FIT

DESCRIPTION: ELASTIC WAIST DOUBLE KNEE CANVAS PANT

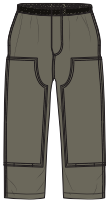
100% COTTON

DARK BROWN, SMOKEY OLIVE, UNBLEACHED

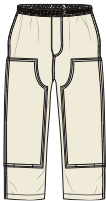
XS S M L XL XXL



DARK BROWN



SMOKEY OLIVE



UNBLEACHED

D1 - BOTTOMS

FALL 2023

DELIVERY TWO

JACKETS



ROLL CALL VARSITY JACKET

121800552

FIT: REGULAR FIT

DESCRIPTION: WOOL VARSITY JACKET WITH OBEY APPLIQUE

52% POLYESTER 45% WOOL 2% VISCOSE 1 % NYLON

SURF BLUE, BLACK

XS S M L XL XXL



D2 - JACKETS

TURNPIKE BOMBER JACKET

121800545

FIT: REGULAR FIT

DESCRIPTION: ZIP BOMBER WITH RIB

100% POLYESTER

BLACK, JAVA BROWN

S M L XL XXL



D2 - JACKETS

STUDIO MOCK NECK ANORAK

121800544

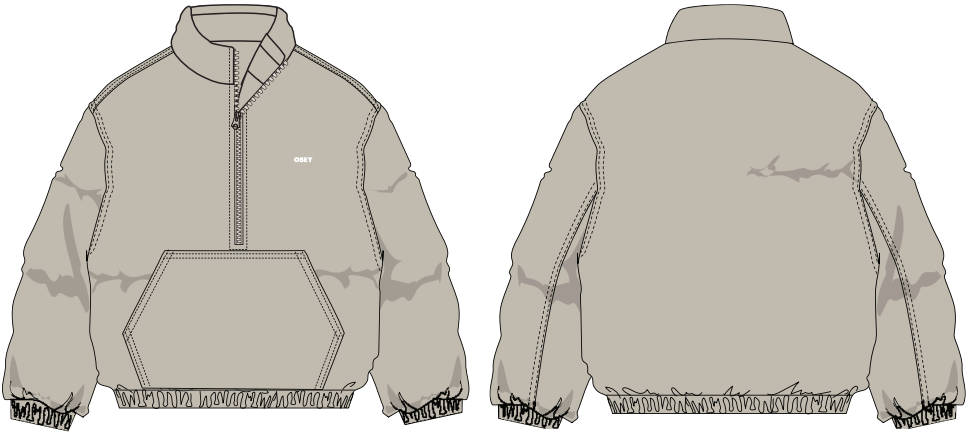
FIT: RELAXED FIT

DESCRIPTION: POP OVER INSULATED ANORAK

100% POLYESTER

SILVER GREY, BLACK

S M L XL XXL



SILVER GREY



BLACK

D2 - JACKETS

WHISPERS JACKET

121800548

FIT: RELAXED FIT

DESCRIPTION: CORDUROY COLLAR PUFFER JACKET

100% POLYESTER

GREEN GABLES MULTI, FEATHER GRAY MULTI

S M L XL XXL



GREEN GABLES MULTI



FEATHER GRAY MULTI

D2 - JACKETS

PORTIONS SHERPA JACKET

121800549

FIT: RELAXED FIT

DESCRIPTION: SHERPA JACKET WITH PATCH POCKETS

100% POLYESTER

JAVA BROWN MULTI, UNBLEACHED MULTI

S M L XL XXL



JAVA BROWN MULTI



UNBLEACHED MULTI

D2 - JACKETS

PREMIUM FLEECE OUTERWEAR



INSTITUTE EXTRA HEAVY HOOD

112470195

FIT: BOXY FIT

DESCRIPTION: EXTRA HEAVY WEIGHT HOODED FLEECE WITH EMBROIDERY

70% COTTON 30% POLYESTER

ACADEMY NAVY, BLACK, SILVER GREY

XS S M L XL XXL



ACADEMY NAVY



BLACK



SILVER GREY

D2 - PREMIUM FLEECE OUTERWEAR

GAZE II HOODED JACKET

121800542

FIT: OVERSIZED FIT

DESCRIPTION: HOODED ZIP JACKET

100% POLYESTER

JAVA BROWN, BLACK, SILVER GREY

S M L XL XXL



JAVA BROWN



BLACK



SILVER GREY

D2 - PREMIUM FLEECE OUTERWEAR

CORRIDOR MOCKNECK

121800539

FIT: REGULAR FIT

DESCRIPTION: MOCK NECK FLEECE WITH OBEY EMBROIDERY

100% POLYESTER

AVENTURINE GREEN, SEPIA

S M L XL XXL



AVENTURINE GREEN



SEPIA

D2 - PREMIUM FLEECE OUTERWEAR



THREE RIVERS
BUILDING

TOPS

35

ALEX WOVEN

181200375

FIT: REGULAR FIT

DESCRIPTION: PLAID LS WOVEN WITH OBEY EMBROIDERY

100% COTTON

CLEAR SKY MULTI, IRISH CREAM MULTI

S M L XL XXL



IRISH CREAM MULTI

CLEAR SKY MULTI

D2 - TOPS

BENNY CORD WOVEN

181200376

FIT: REGULAR FIT

DESCRIPTION: CORDUROY PLAID LS WOVEN

100% COTTON

JAVA BROWN MULTI, PURPLE ROSE MULTI

S M L XL XXL



PURPLE ROSE MULTI

JAVA BROWN MULTI

D2 - TOPS

JOHNNY WOVEN

181200379

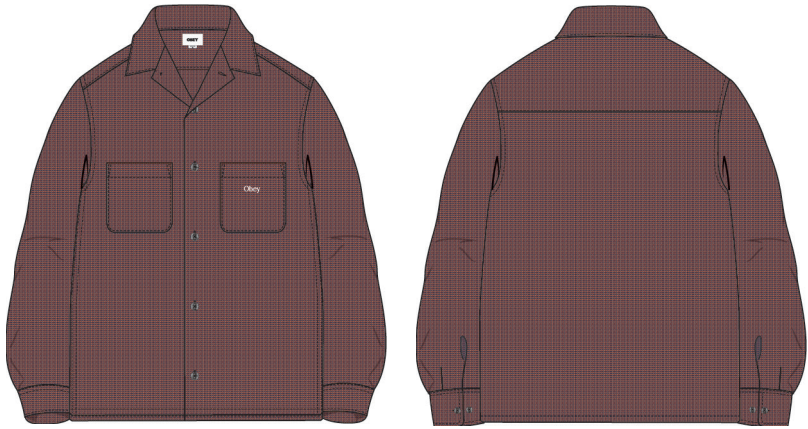
FIT: REGULAR FIT

DESCRIPTION: FANCY WEAVE LS WOVEN

100% COTTON

BAKED CLAY MULTI, BLACK MULTI

S M L XL XXL



BLACK MULTI

BAKED CLAY MULTI

D2 - TOPS

WES WOVEN

181200378

FIT: REGULAR FIT

DESCRIPTION: PLAID LS WOVEN

100% COTTON

BLACK MULTI, UNBLEACHED MULTI

S M L XL XXL



UNBLEACHED MULTI

BLACK MULTI

D2 - TOPS

BRUCE WOVEN

181200377

FIT: REGULAR FIT

DESCRIPTION: PLAID LS WOVEN

100% COTTON

UNBLEACHED MULTI, GOOD GREY MULTI

S M L XL XXL



GOOD GREY MULTI

UNBLEACHED MULTI

D2 - TOPS

HEARTS THERMAL LS

131030127

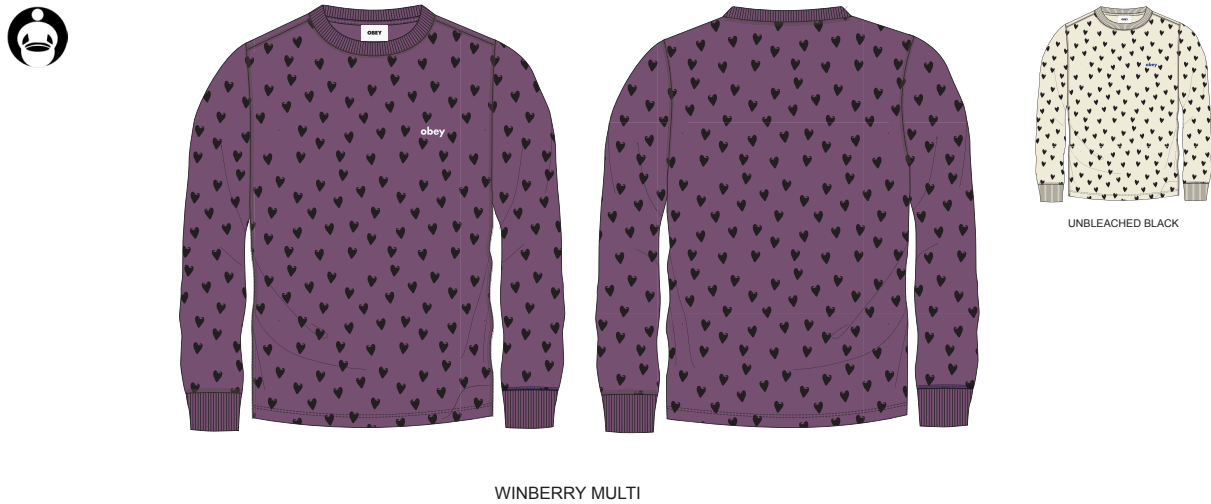
FIT: REGULAR FIT

DESCRIPTION: LONG SLEEVE PRINTED THERMAL WITH OBEY EMBROIDERY

100% COTTON

WINBERRY MULTI, UNBLEACHED BLACK

S M L XL XXL



D2 - TOPS

INTERLOCK LOGO JACQUARD POLO LS

131040051

FIT: REGULAR FIT

DESCRIPTION: LONG SLEEVE JACQUARD POLO WITH OBEY EMBROIDERY

100% COTTON

AVENTURINE GREEN MULTI, BLACK MULTI

S M L XL XXL



D2 - TOPS

ASTORIA VELOUR STRIPE POLO LS

131040050

FIT: REGULAR FIT

DESCRIPTION: LONG SLEEVE VELOUR POLO WITH OBEY EMBROIDERY

80% COTTON 20% POLYESTER

SEPIA MULTI, WINBERRY MULTI

S M L XL XXL



WINBERRY MULTI

SEPIA MULTI

D2 - TOPS

WINDMERE JACQUARD POLO LS

131040052

FIT: REGULAR FIT

DESCRIPTION: LONG SLEEVE JACQUARD POLO WITH OBEY EMBROIDERY

100% COTTON

BLACK MULTI, SILVER GREY MULTI

S M L XL XXL



SILVER GREY MULTI

BLACK MULTI

D2 - TOPS



FLEECE

CLEARCHANNEL



AGES HOOD

112470200

FIT: REGULAR FIT

DESCRIPTION: FLEECE HOOD WITH LOGO EMBROIDERY

58% COTTON 42% POLYESTER

AVENTURINE GREEN, ACADEMY NAVY, SILVER GREY

XS S M L XL XXL



AVENTURINE GREEN



ACADEMY NAVY



SILVER GREY

D2 - SPECIALTY FLEECE

YEAR HOOD

112470201

FIT: REGULAR FIT

DESCRIPTION: FLEECE HOOD WITH LOGO EMBROIDERY

58% COTTON 42% POLYESTER

SEPIA, BLACK

XS S M L XL XXL



SEPIA



BLACK

D2 - SPECIALTY FLEECE

GINO POLO SWEATSHIRT LS

111620090

FIT: REGULAR FIT

DESCRIPTION: POLO SWEATSHIRT WITH OBEY EMBROIDERY

100% COTTON

ACADEMY NAVY MULTI, JAVA BROWN MULTI

S M L XL XXL



ACADEMY NAVY MULTI



JAVA BROWN MULTI

D2 - SPECIALTY FLEECE



HEADWEAR

BOLD TWILL 6 PANEL STRAPBACK

100580302

FIT: CLASSIC FIT

DESCRIPTION: 6 PANEL STRAPBACK WITH OBEY EMBROIDERY

100% COTTON

BLACK, BROWN, SURF BLUE, KHAKI

O/S



BLACK



BROWN



SURF BLUE



KHAKI

D1 - HEADWEAR

OBEY CORD LABEL 6 PANEL STRAPBACK

100580355

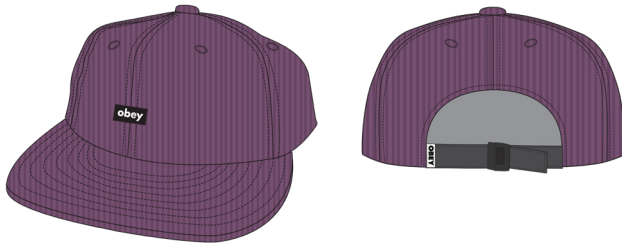
FIT: CLASSIC FIT

DESCRIPTION: 6 PANEL CORDUROY STRAPBACK WITH LABEL

100% COTTON

WINEBERRY, BLACK, BROWN

O/S



WINEBERRY



BLACK



BROWN

D1 - HEADWEAR

OBEY SHADE 6 PANEL SNAPBACK

100580348

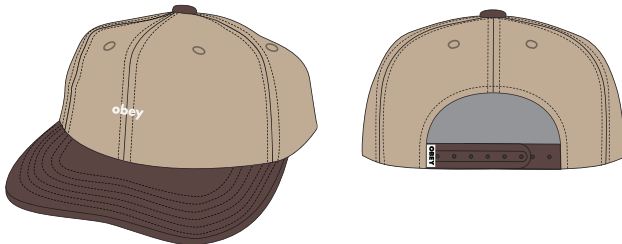
FIT: CLASSIC FIT

DESCRIPTION: 6 PANEL SURGE SNAPBACK WITH EMBROIDERY

85% ACRYLIC 15% WOOL

KHAKI MULTI, BLACK MULTI, DARK GREY MULTI, DARK CEDAR MULTI

O/S



KHAKI MULTI



BLACK MULTI



DARK GREY MULTI



DARK CEDAR MULTI

D1 - HEADWEAR

OBEY LOWERCASE 5 PANEL SNAPBACK
100490108
FIT: CLASSIC FIT
DESCRIPTION: 5 PANEL SNAPPACK WITH EMBROIDERY
100% COTTON
MILD NAVY, BLACK, BROWN, UNBLEACHED
O/S



MILD NAVY



BLACK



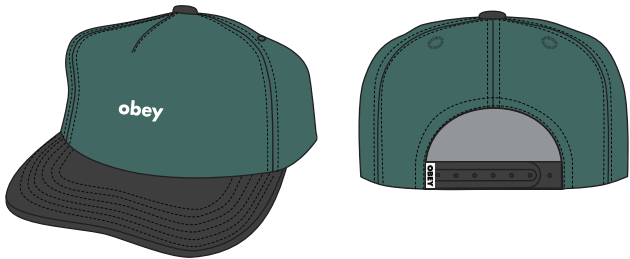
BROWN



UNBLEACHED

D1 - HEADWEAR

OBEY CASE 5 PANEL SNAPBACK
100490113
FIT: CLASSIC FIT
DESCRIPTION: 5 PANEL SNAPBACK WITH EMBROIDERY
100% COTTON
DARK CEDAR MULTI, LIGHT BLUE MULTI, UNBLEACHED MULTI
O/S



DARK CEDAR MULTI



LIGHT BLUE MULTI



UNBLEACHED MULTI

D1 - HEADWEAR

OBEY CASE 6 PANEL CLASSIC SNAPBACK
100580351
FIT: CLASSIC FIT
DESCRIPTION: 6 PANEL SNAPBACK WITH EMBROIDERY
85% ACRYLIC 15% WOOL
BROWN, BLACK, NAVY, DARK CEDAR
O/S



BROWN



BLACK



NAVY



DARK CEDAR

D1 - HEADWEAR

OBEY ELLIS 6 PANEL STRAPBACK

100580356

FIT: CLASSIC FIT

DESCRIPTION: 6 PANEL TWILL SNAPBACK WITH EMBROIDERY

100% COTTON

WINEBERRY, BLACK, BROWN

O/S



WINEBERRY



BLACK



BROWN

D1 - HEADWEAR

OBEY ANNA STRAPBACK

100580350

FIT: CLASSIC FIT

DESCRIPTION: STRAP BACK HAT WITH A EMBROIDERY

80% POLYESTER 20% WOOL

PASTEL GREEN, BROWN

O/S



PASTEL GREEN



BROWN

D1 - HEADWEAR

FLOWER 6 PANEL STRAPBACK

100580354

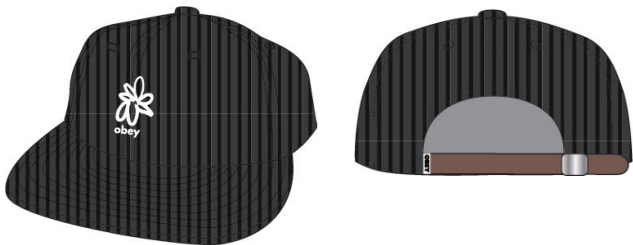
FIT: CLASSIC FIT

DESCRIPTION: 6 PANEL CORDUROY STRAPBACK WITH OBEY EMBROIDERY

100% COTTON

BLACK, UNBLEACHED

O/S



BLACK



UNBLEACHED

D1 - HEADWEAR

OBEY SELECT 6 PANEL SNAPBACK

100580357

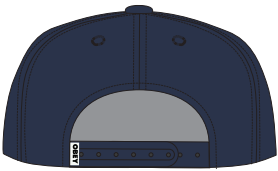
FIT: CLASSIC FIT

DESCRIPTION: 6 PANEL TWILL SNAPBACK WITH EMBROIDERY

100% COTTON

NAVY, BLACK, UNBLEACHED

O/S



NAVY



BLACK



UNBLEACHED

D1 - HEADWEAR

CORRIDOR 6 PANEL SNAPBACK

100580353

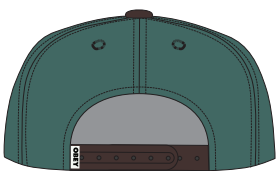
FIT: CLASSIC FIT

DESCRIPTION: 6 PANEL TWILL SNAPBACK WITH OBEY EMBROIDERY

100% COTTON

DARK CEDAR MULTI, UNBLEACHED MULTI

O/S



DARK CEDAR MULTI



UNBLEACHED MULTI

D1 - HEADWEAR

OBEY HEAVEN 5 PANEL SNAPBACK

100490115

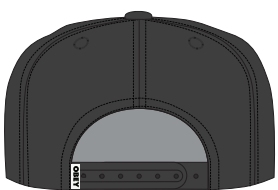
FIT: CLASSIC FIT

DESCRIPTION: 5 PANEL SNAPPACK WITH EMBROIDERY

100% COTTON

BLACK, UNBLEACHED

O/S



BLACK



UNBLEACHED

D1 - HEADWEAR

OBEY YEAR 5 PANEL SNAPBACK

100490114

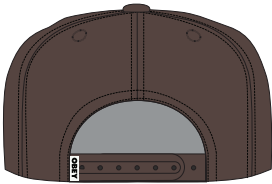
FIT: CLASSIC FIT

DESCRIPTION: 5 PANEL SNAPPACK WITH EMBROIDERY

100% COTTON

BROWN, BLACK

O/S



BLACK

BROWN

D1 - HEADWEAR

OBEY RUSH 6 PANEL CLASSIC SNAPBACK

100580352

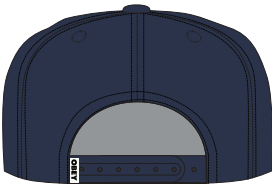
FIT: CLASSIC FIT

DESCRIPTION: 6 PANEL SNAPBACK WITH EMBROIDERY

85% ACRYLIC 15% WOOL

NAVY, BLACK, BROWN

O/S



BLACK

NAVY



BROWN

D1 - HEADWEAR

ROLL CALL 6 PANEL CLASSIC SNAPBACK

100580358

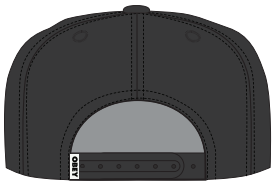
FIT: CLASSIC FIT

DESCRIPTION: 6 PANEL WOOL SNAPBACK WITH EMBROIDERY

85% ACRYLIC 15% WOOL

BLACK, NAVY

O/S

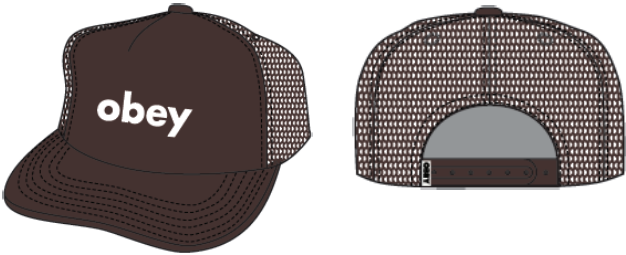


NAVY

BLACK

D1 - HEADWEAR

OBEY LOWERCASE TRUCKER
100500039
FIT: CLASSIC FIT
DESCRIPTION: 5 PANEL FOAM TRUCKER WITH EMBROIDERY
100% POLYESTER
BROWN, BLACK, SURF BLUE, IRISH CREAM
O/S



BROWN



BLACK



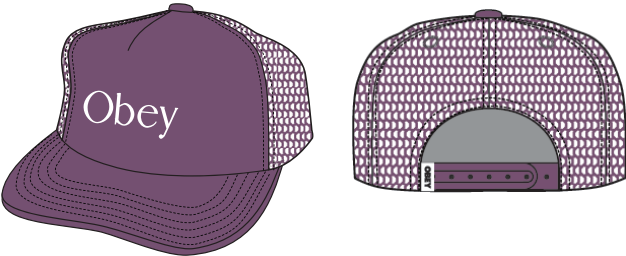
SURF BLUE



IRISH CREAM

D1 - HEADWEAR

OBEY PAGE TRUCKER
100500040
FIT: CLASSIC FIT
DESCRIPTION: 5 PANEL TRUCKER WITH OBEY EMBROIDERY
100% POLYESTER
WINEBERRY, BLACK, SILVER GREY, CORK
O/S



WINEBERRY



BLACK



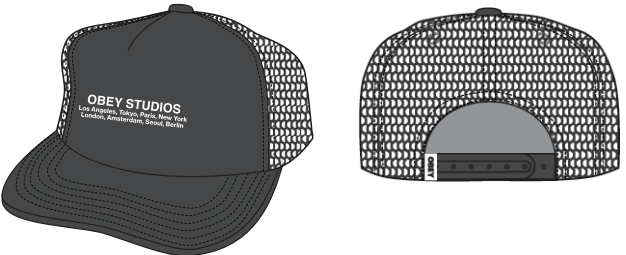
SILVER GREY



CORK

D1 - HEADWEAR

OBEY STUDIOS TRUCKER
100500041
FIT: CLASSIC FIT
DESCRIPTION: 5 PANEL TRUCKER WITH OBEY PATCH
100% POLYESTER
BLACK, BROWN, KHAKI
O/S



BLACK



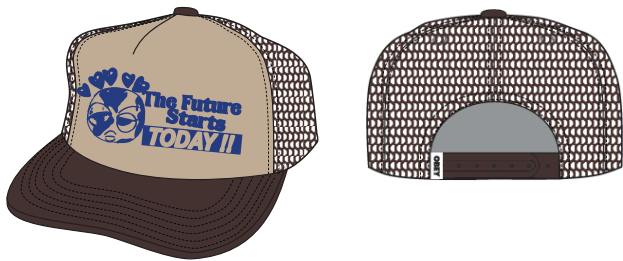
BROWN



KHAKI

D1 - HEADWEAR

OBEY TODAY TRUCKER
100500042
FIT: CLASSIC FIT
DESCRIPTION: 5 PANEL TRUCKER WITH OBEY PATCH
100% POLYESTER
BROWN MULTI, BLACK MULTI
O/S



BROWN MULTI



BLACK MULTI

D1 - HEADWEAR

BOLD TWILL BUCKET HAT
100520055
FIT: CLASSIC FIT
DESCRIPTION: TWILL BUCKET HAT WITH OBEY EMBROIDERY
100% COTTON
BLACK, BROWN, WINEBERRY, UNBLEACHED
O/S



BLACK



BROWN



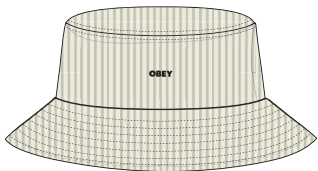
WINEBERRY



UNBLEACHED

D1 - HEADWEAR

BOLD CORD BUCKET HAT
100520051
FIT: CLASSIC FIT
DESCRIPTION: CORDUROY BUCKET HAT WITH OBEY EMBROIDERY
100% COTTON
UNBLEACHED, BLACK, BROWN
O/S



UNBLEACHED



BLACK



BROWN

D1 - HEADWEAR

CHERISH CORD BUCKET HAT
100520086

FIT: CLASSIC FIT
DESCRIPTION: OBEY CORDUROY BELL BUCKET HAT WITH EMBROIDERY
100% COTTON
DARK CEDAR, BLACK, SILVER GREY
O/S



DARK CEDAR



BLACK



SILVER GREY

D1 - HEADWEAR

OBEY INSULATED BUCKET HAT
100520085

FIT: CLASSIC FIT
DESCRIPTION: INSULATED BUCKET HAT
100% POLYESTER
BLACK, SILVER GREY
O/S



BLACK



SILVER GREY

D1 - HEADWEAR

ICON EYES BEANIE

100030132

FIT: CLASSIC FIT

DESCRIPTION: STANDARD ROLL CUFF JERSEY KNIT BEANIE W/ OBEY EYES

100% ACRYLIC

RUBBER, BLACK, SEPIA, DARK CEDAR, RED ORANGE

O/S



RUBBER



BLACK



SEPIA



DARK CEDAR



RED ORANGE

D1 - HEADWEAR

MICRO BEANIE

100030125

FIT: CLASSIC FIT

DESCRIPTION: EXTRA SHALLOW ROLL CUFF RIUB BEANIE W/ OBEY PIN

100% ACRYLIC

BLACK, JAVA BROWN, PURPLE ROSE, ICEBERG GREEN, CORK, UNBLEACHED

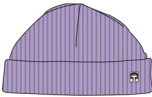
O/S



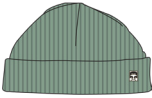
BLACK



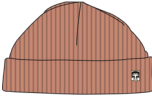
JAVA BROWN



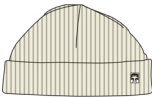
PURPLE ROSE



ICEBERG GREEN



CORK



UNBLEACHED

D1 - HEADWEAR

FUTURE BEANIE

100030163

FIT: CLASSIC FIT

DESCRIPTION: MID BEANIE WITH OBEY EMBROIDERY

100% ACRYLIC

WINEBERRY, BLACK, JAVA BROWN, SURF BLUE, FERN GREEN, SILVER GREY

O/S



WINEBERRY



BLACK



JAVA BROWN



SURF BLUE



FERN GREEN



SILVER GREY

D1 - HEADWEAR

KARMA BEANIE

100030197

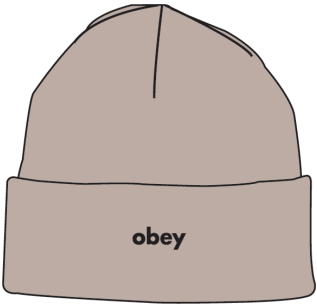
FIT: CLASSIC FIT

DESCRIPTION: CUFF BEANIE WITH OBEY EMBROIDERY

100% ACRYLIC

MUSHROOM, BLACK, JAVA BROWN, RUBBER BROWN, FERN GREEN

O/S



MUSHROOM



BLACK



JAVA BROWN



RUBBER BROWN



FERN GREEN

D1 - HEADWEAR

THROWBACK BEANIE

100030209

FIT: CLASSIC FIT

DESCRIPTION: CUFF BEANIE WITH OBEY EMBROIDERY

100% ACRYLIC

SKY, BLACK, SEPIA

O/S



SKY



BLACK



SEPIA

D1 - HEADWEAR

LOOSE GROOVE BEANIE

100030208

FIT: CLASSIC FIT

DESCRIPTION: CUFF STRIPE BEANIE WITH OBEY EMBROIDERY

100% ACRYLIC

BLACK MULTI, CLAY MULTI

O/S



BLACK MULTI



CLAY MULTI

D1 - HEADWEAR

GOOD TIMES JAQUARD BEANIE
100030207
FIT: CLASSIC FIT
DESCRIPTION: CUFF JAQUARD BEANIE
100% ACRYLIC
NAVY MULTI, BLACK MULTI
O/S



NAVY MULTI



BLACK MULTI

D1 - HEADWEAR

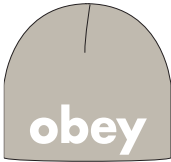
LOWERCASE BEANIE
100030191
FIT: CLASSIC FIT
DESCRIPTION: NO CUFF BEANIE WITH OBEY JAQUARD
100% ACRYLIC
SURF BLUE, BLACK, SILVER GREY
O/S



SURF BLUE



BLACK



SILVER GREY

D1 - HEADWEAR

NATURE AND NUTURE BEANIE
100030206
FIT: CLASSIC FIT
DESCRIPTION: NO CUFF BEANIE WITH JAQUARD ART
100% ACRYLIC
BLACK, SURF BLUE
O/S



BLACK



SURF BLUE

D1 - HEADWEAR

BOUCLE FLEECE STOCKING CAP

100030210

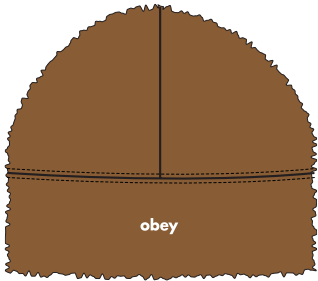
FIT: CLASSIC FIT

DESCRIPTION: NO CUFF BEANIE WITH EMBROIDERY

100% ACRYLIC

CATECHU WOOD, BLACK MULTI, SILVER GREY

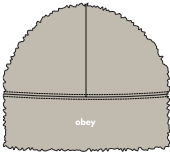
O/S



CATECHU WOOD



BLACK MULTI



SILVER GREY

D1 - HEADWEAR



BAGS

WASTED HIP BAG

100010098

DESCRIPTION: SMALL HIP BAG

100% COTTON TWILL

DENIM, BLACK TWILL

O/S



DENIM



BLACK TWILL

D1 - BAGS

COMMUTER WAIST BAG

100010126

DESCRIPTION: TECHNICAL WAIST BAG WITH MULTIPLE POCKETS, COMPRESSION STRAPS, AND PVC PATCH

100% POLYESTER

SURF BLUE MULTI, BLACK

O/S



SURF BLUE MULTI



BLACK

D1 - BAGS

CONDITIONS TRAVELER BAG III

100010135

DESCRIPTION: SHOULDER BAG WITH MULTIPLE POCKETS AND PVC PATCH

100% POLYESTER

BLACK, BROWN MULTI

O/S



BLACK



BROWN MULTI

D1 - BAGS

FLOWER FIELD TOTE BAG

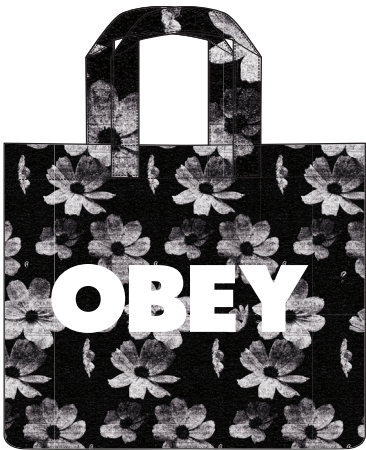
100010147

DESCRIPTION: PVC TOTA BAG WITH POPLIN UNDERLAY, INTERIOR POCKET AND SCREENPRINT

CONTENT: 100% PVC

BLACK MULTI

O/S



BLACK MULTI

D1 - TOTE BAG

OBEY EUPHORIA PERSONIFIED

100553557

DESCRIPTION: JUMBO TOTE BAG

CONTENT: 100% COTTON

CREAM

O/S



CREAM

D1 - TOTE BAG

A PIECE OF HEAVEN

100553558

DESCRIPTION: JUMBO TOTE BAG

CONTENT: 100% COTTON

BLACK, CREAM

O/S



BLACK



CREAM

D1 - TOTE BAG

SOCKS



TENNIS
টেনিস মীরবনে
TRAINING
2540 8333

Soul Healing Fri 4 Novem

DRUM & BAS

From Soulful to Jungle to downr

Australi
Funk
Severit

HK Gosp



Ly
Dan
Rog
B

< 12 F

Three years strong, Soul Healing brings its 3rd instal of DNB Smashers for 2011 packed and vibing. With a line up of seasoned selectors, resident gospel-bass's Momoko & Fokuz Recording's emerging liquid funk producer Severity Zero fri under. A night of soulful vibes as well as the harder heavy duty bizness in the



SOULHEALINGHONGKONG

BA LG/F 13 Lyndhurst Ten

COOPER II SOCKS

100260093

DESCRIPTION: CLASSIC ATHLETIC SOCKS WITH CONTRAST STRIPES AND LOGO JACQUARD
85% COTTON / 13% POLYESTER / 2% SPANDEX

WHITE / SURF BLUE, WHITE / BLACK, WHITE / JAVA BROWN, WHITE / DARK CEDAR
O/S



WHITE / SURF BLUE



WHITE / BLACK



WHITE / JAVA BROWN



WHITE / DARK CEDAR

D1 - SOCKS

OBEY EYES ICON SOCKS

100260141

DESCRIPTION: CLASSIC ATHLETIC SOCKS WITH JAQUARD OBEY LOGO
85% COTTON / 13% POLYESTER / 2% SPANDEX

BLACK, JAVA BROWN, WINEBERRY, WHITE
O/S



BLACK



JAVA BROWN



WINEBERRY



WHITE

D1 - SOCKS

OBEY BOLD SOCKS

100260144

DESCRIPTION: CLASSIC ATHLETIC SOCKS WITH OBEY EMBROIDERY
85% COTTON / 13% POLYESTER / 2% SPANDEX

ICEBERG GREEN, BLACK, UNBLEACHED, WHITE
O/S



ICEBERG GREEN



BLACK



UNBLEACHED



WHITE

D1 - SOCKS

OBEY FLORAL SOCKS

100260176

DESCRIPTION: CLASSIC ATHLETIC TUBE SOCKS

85% COTTON / 13% POLYESTER / 2% SPANDEX

JAVA BROWN, UNBLEACHED

O/S



JAVA BROWN



UNBLEACHED

D1 - SOCKS

OBEY DAHLIA SOCKS

100260177

DESCRIPTION: CLASSIC ATHLETIC TUBE SOCKS

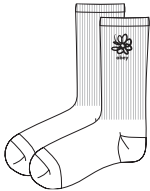
85% COTTON / 13% POLYESTER / 2% SPANDEX

UNBLEACHED, WHITE

O/S



UNBLEACHED



WHITE

D1 - SOCKS

OBEY MERTON SOCKS

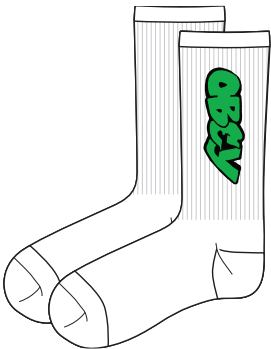
100260178

DESCRIPTION: CLASSIC ATHLETIC TUBES SOCKS

85% COTTON / 13% POLYESTER / 2% SPANDEX

WHITE, PURPLE ROSE

O/S



WHITE



PURPLE ROSE

D1 - SOCKS

ACCESSORIES



BIG BOY WEB BELT

100050026

DESCRIPTION: ADJUSTABLE WEB BELT WITH SILVER HARDWARE AND A OBEY EYE LABEL

60% COTTON / 40% POLYESTER

SURF BLUE, BLACK, JAVA BROWN, UNBLEACHED

O/S



BLACK



JAVA BROWN



UNBLEACHED

SURF BLUE

D1 - ACCESSORIES

OBEY GRAFFITI BELT

100050038

DESCRIPTION: PRINTED WEB BELT WITH BUCKLE AND EYES LABEL

60% COTTON 40% POLYESTER

BLACK MULTI, JAVA BROWN MULTI

O/S



JAVA BROWN MULTI

BLACK MULTI

D1 - ACCESSORIES

OBEY SNAKE DRESS BELT

100050036

DESCRIPTION: EMBOSSED FAUX SNAKE SKIN PRINT BELT WITH PU BACKING AND ENGRAVED METAL BUCKLE AND END TIP

50% POLYESTER 50% PU

TAN, DARK GREEN

S/M, L/XL



DARK GREEN

TAN

D1 - ACCESSORIES

BULLDOG AIR FRESHNER

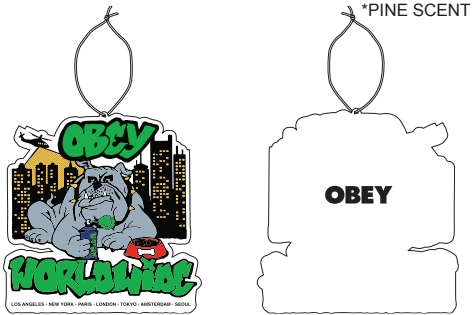
100680011

DESCRIPTION: PRINTED AIR FRESHENER WITH PINE SCENT

100% PAPER

BLACK MULTI

O/S



BLACK MULTI

D1 - ACCESSORIES

OBEY ICON BANDANA

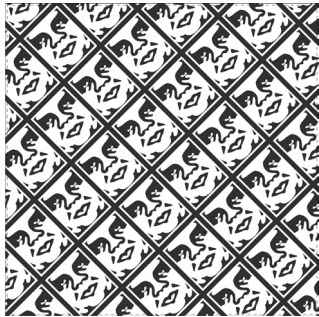
100020002

DESCRIPTION: PRINTED BANDANA

100% COTTON

BLACK / WHITE

O/S



BLACK / WHITE

D1 - ACCESSORIES

OBEY ICON AIR FRESHENER

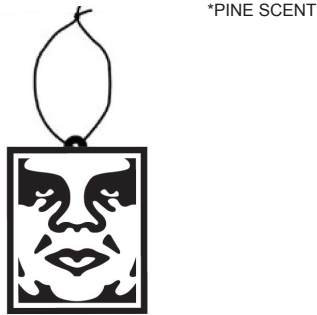
100680003

DESCRIPTION: PRINTED AIR FRESHENER WITH PINE SCENT

100% PAPER

BLACK MULTI

O/S



BLACK MULTI

D1 - ACCESSORIES

OBEY ICON METAL KEYCHAIN

100160021

DESCRIPTION: METAL KEYCHAIN WITH ICON

100% METAL

WHITE

O/S



WHITE

D1 - ACCESSORIES

BOLD BOTTLE

100320006

DESCRIPTION: METAL INSTALLED WATTER BOTTLE WITH PRINT

100% METAL

WHITE

O/S



WHITE

D1 - ACCESSORIES

BOLD PEN

100770000

DESCRIPTION: PLASTIC BAL POINT PEN

100% METAL

BLACK

O/S



BLACK

D1 - ACCESSORIES

STICKER PACK 5

100270012

DESCRIPTION: ASSORTED STICKERS FOR THE OBEY FIENDS. SPREAD IT! (STICKERS MAY VARY FROM CATALOG PHOTO)

ASSORTED

O/S



ASSORTED

D1 - ACCESSORIES

STICKER PACK 2

100270001

DESCRIPTION: ASSORTED STICKERS FOR THE OBEY FIENDS. SPREAD IT! (STICKERS MAY VARY FROM CATALOG PHOTO)

ASSORTED

O/S



ASSORTED

D1 - ACCESSORIES

OBEY WORLDWIDE ICON

326003236

DESCRIPTION: CORK BLOCK WITH BOLD OBEY PRINT

100% CORK

O/S

* THIS ITEM IS POP, AND INTENDED TO BE USED IN STORE DISPLAY. NOT FOR RESALE



CORK

D1 - POP

OBEY LOWERCASE ICON

326003531

DESCRIPTION: CORK BLOCK WITH BOLD OBEY PRINT

100% CORK

O/S

* THIS ITEM IS POP, AND INTENDED TO BE USED IN STORE DISPLAY. NOT FOR RESALE



CORK

LARGE ICON FACE FRAMED PRINT

326000174

DESCRIPTION: FRAMED PRINT

ASSORTED

O/S

* THIS ITEM IS POP, AND INTENDED TO BE USED IN STORE DISPLAY. NOT FOR RESALE



ASSORTED

D1 - POP

CORE PRINTABLES



OBEY BOLD HOOD

112842349

DESCRIPTION: PREMIUM HOOD

CONTENT: 58% COTTON 42% POLYESTER

SURF BLUE, BLACK, ACADEMY NAVY, SILVER GREY

XS S M L XL XXL



SURF BLUE



BLACK



ACADEMY NAVY



SILVER GREY

D1 - CORE PRINTABLES

OBEY EYES ICON HOOD

112843126

DESCRIPTION: PREMIUM HOOD

CONTENT: 58% COTTON 42% POLYESTER

PASSION FLOWER, BLACK, SEPIA, UNBLEACHED

XS S M L XL XXL



PASSION FLOWER



BLACK



SEPIA



UNBLEACHED

D1 - CORE PRINTABLES

OBEY BOLD CREW

112862349

DESCRIPTION: PREMIUM CREW

CONTENT: 58% COTTON 42% POLYESTER

ADVENTURE GREEN, BLACK, SURF BLUE

XS S M L XL XXL



BLACK



SURF BLUE

ADVENTURE GREEN

D1 - CORE PRINTABLES

OBEY EYES ICON CREW

112863126

DESCRIPTION: PREMIUM CREW

CONTENT: 58% COTTON 42% POLYESTER

BLACK, SILVER GREY, HEATHER GREY

XS S M L XL XXL



SILVER GREY



HEATHER GREY

BLACK

D1 - CORE PRINTABLES

OBEY EYES ICON ZIP

112853126

DESCRIPTION: PREMIUM FLEECE ZIP HOOD

CONTENT: 58% COTTON 42% POLYESTER

SURF BLUE, BLACK

XS S M L XL XXL



BLACK

SURF BLUE

D1 - CORE PRINTABLES

OBEY BOLD ZIP

112852349

DESCRIPTION: PREMIUM FLEECE ZIP HOOD

CONTENT: 58% COTTON 42% POLYESTER

BLACK, HEATHER GREY

XS S M L XL XXL



HEATHER GREY

BLACK

D1 - CORE PRINTABLES

OBEY LOWER CASE 2

165263411

DESCRIPTION: CLASSIC FIT T-SHIRT

CONTENT: 100% COTTON

CITRUS, BLACK, GOOD GREY, WHITE

S M L XL XXL



CITRUS



BLACK



GOOD GREY



WHITE

D1 - CORE PRINTABLES

BOLD OBEY 2

165263016

DESCRIPTION: CLASSIC FIT T-SHIRT

CONTENT: 100% COTTON

CUCUMBER, BLACK, SILT, WHITE

S M L XL XXL



CUCUMBER



BLACK



SILT



WHITE

D1 - CORE PRINTABLES

OBEY EYES ICON 2

165262142

DESCRIPTION: CLASSIC FIT T-SHIRT

CONTENT: 100% COTTON

SILT, BLACK, DIGITAL VIOLET, SAND

S M L XL XXL



SILT



BLACK



DIGITAL VIOLET



SAND

D1 - CORE PRINTABLES

OBEY BOLD 3

166912888

DESCRIPTION: HEAVYWEIGHT BOX FIT T-SHIRT

CONTENT: 100% COTTON

CORK, OFF BLACK, ADVENTURE GREEN, DIGITAL LAVENDER, IRISH CREAM

S M L XL XXL



CORK



OFF BLACK



ADVENTURE GREEN



DIGITAL LAVENDER



IRISH CREAM

D1 - CORE PRINTABLES

OBEY EYES ICON 2

166912142

DESCRIPTION: HEAVYWEIGHT BOX FIT T-SHIRT

CONTENT: 100% COTTON

SILVER GREY, OFF BLACK, SEPIA, SURF BLUE, MULBERRY PURPLE

XS S M L XL XXL



SILVER GREY



OFF BLACK



SEPIA



SURF BLUE



MULBERRY PURPLE

D1 - CORE PRINTABLES

OBEY BOLD 3

167102888

DESCRIPTION: HEAVYWEIGHT LONGSLEEVE BOX FIT T-SHIRT

CONTENT: 100% COTTON

ADVENTURE GREEN, OFF BLACK, CORK, DIGITAL LAVENDER, IRISH CREAM

S M L XL XXL



ADVENTURE GREEN



OFF BLACK



CORK



DIGITAL LAVENDER



IRISH CREAM

D1 - CORE PRINTABLES

OBEY EYES ICON 2

167102142

DESCRIPTION: HEAVYWEIGHT LONGSLEEVE BOX FIT T-SHIRT

CONTENT: 100% COTTON

SURF BLUE, OFF BLACK, SEPIA, PURPLE MULBERRY, SILVER GREY

S M L XL XXL



SURF BLUE



OFF BLACK



SEPIA



MULBERRY BLUE



SILVER GREY

D1 - CORE PRINTABLES

FALL 2023

DELIVERY ONE



LIFESTYLE PRINTABLES

OBEY INT. VISUAL INDUSTRIES

112843553

DESCRIPTION: PREMIUM HOOD

CONTENT: 58% COTTON 42% POLYESTER

BLACK, SURF BLUE, SILVER GREY

S M L XL XXL



SURF BLUE



SILVER GREY

BLACK

D1 - PREMIUM HOOD

OBEY IT'S ALL LOVE

112843547

DESCRIPTION: PREMIUM HOOD

CONTENT: 58% COTTON 42% POLYESTER

CORK, UNBLEACHED

S M L XL XXL



UNBLEACHED

CORK

D1 - PREMIUM FLEECE HOOD

A PIECE OF HEAVEN

112843558

DESCRIPTION: PREMIUM HOOD

CONTENT: 58% COTTON 42% POLYESTER

SILVER GREY, BLACK

S M L XL XXL



BLACK

SILVER GREY

D1 - PREMIUM HOOD

OBEY LOVE PUP

112863579

DESCRIPTION: PREMIUM CREW

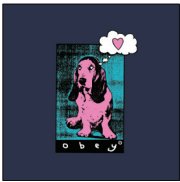
CONTENT: 58% COTTON 42% POLYESTER

ADVENTURE GREEN, ACADEMY NAVY

S M L XL XXL



ADVENTURE GREEN



ACADEMY NAVY

D1 - PREMIUM CREW

OBEY EUPHORIA PERSONIFIED

112863557

DESCRIPTION: PREMIUM FLEECE CREW

CONTENT: 58% COTTON 42% POLYESTER

SILVER GREY, CORK

S M L XL XXL



SILVER GREY



CORK

D1 - PREMIUM CREW

OBEY CITY WATCH DOG

112853546

DESCRIPTION: PREMIUM FLEECE ZIP HOOD

CONTENT: 58% COTTON 42% POLYESTER

SEPIA, BLACK

S M L XL XXL



BLACK

SEPIA

D1 - PREMIUM ZIP HOOD

OBEY VISUAL IND. WORLDWIDE

165263541

DESCRIPTION: CLASSIC FIT T-SHIRT

CONTENT: 100% COTTON

BLACK, DIGITAL VIOLET, CITRUS, WHITE

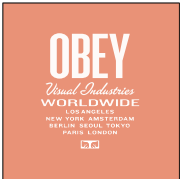
S M L XL XXL



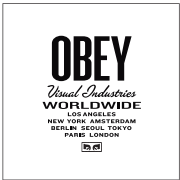
BLACK



DIGITAL VIOLET



CITRUS



WHITE

D1 - CLASSIC TEE

OBEY DAISY SPRAY

165263542

DESCRIPTION: CLASSIC FIT T-SHIRT

CONTENT: 100% COTTON

SAND, BLACK, CUCUMBER, WHITE

S M L XL XXL



SAND



BLACK



CUCUMBER



WHITE

D1 - CLASSIC TEE

OBEY WORLDWIDE GLOBE

165263543

DESCRIPTION: CLASSIC FIT T-SHIRT

CONTENT: 100% COTTON

BLACK, GOOD GREY, SAND, WHITE

S M L XL XXL



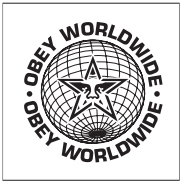
BLACK



GOOD GREY



SAND



WHITE

D1 - CLASSIC TEE

OBEY PEACE & UNITY

165263544

DESCRIPTION: CLASSIC FIT T-SHIRT

CONTENT: 100% COTTON

CREAM, BLACK, CITRUS, WHITE

S M L XL XXL



CREAM



BLACK



CITRUS



WHITE

D1 - CLASSIC TEE

OBEY IT'S ALL LOVE

165263547

DESCRIPTION: CLASSIC FIT T-SHIRT

CONTENT: 100% COTTON

DIGITAL VIOLET, BROWN SUGAR, WHITE

S M L XL XXL



BROWN SUGAR



WHITE

DIGITAL VIOLET

D1 - CLASSIC TEE

OBEY CITY WATCH DOG

165263546

DESCRIPTION: CLASSIC FIT T-SHIRT

CONTENT: 100% COTTON

BROWN SUGAR, BLACK, WHITE

S M L XL XXL



BLACK



WHITE

BROWN SUGAR

D1 - CLASSIC TEE

OBEY MISERY LOVES COMPANY

165263545

DESCRIPTION: CLASSIC FIT T-SHIRT

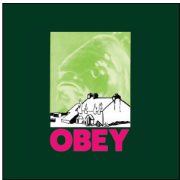
CONTENT: 100% COTTON

SILT, FOREST GREEN, DIGITAL LAVENDER

S M L XL XXL



SILT



FOREST GREEN



DIGITAL LAVENDER

D1 - CLASSIC TEE

OBEY DRIFTING ON A DAYDREAM

165263548

DESCRIPTION: CLASSIC FIT T-SHIRT

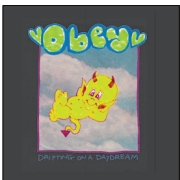
CONTENT: 100% COTTON

FOREST GREEN, BLACK, WHITE

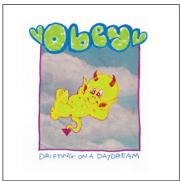
S M L XL XXL



FOREST GREEN



BLACK



WHITE

D1 - CLASSIC TEE

OBEY INT. VISUAL INDUSTRIES

166913553

DESCRIPTION: HEAVYWEIGHT BOX FIT T-SHIRT

CONTENT: 100% COTTON

SILVER GREY, OFF BLACK, MULBERRY PURPLE, WHITE

S M L XL XXL



SILVER GREY



OFF BLACK



MULBERRY PURPLE



WHITE

D1 - HEAVYWEIGHT TEE

OBEY INC.

166913554

DESCRIPTION: HEAVYWEIGHT BOX FIT T-SHIRT

CONTENT: 100% COTTON

SEPIA, SURF BLUE, WHITE

S M L XL XXL



SEPIA



SURF BLUE



WHITE

D1 - HEAVYWEIGHT TEE

OBEY STACK

166913555

DESCRIPTION: HEAVYWEIGHT BOX FIT T-SHIRT

CONTENT: 100% COTTON

ADVENTURE GREEN, OFF BLACK, SEPIA, MULBERRY PURPLE

S M L XL XXL



ADVENTURE GREEN



OFF BLACK



SEPIA



MULBERRY PURPLE

D1 - HEAVYWEIGHT TEE

OBEY ALWAYS SAYING SORRY

166913556

DESCRIPTION: HEAVYWEIGHT BOX FIT T-SHIRT

CONTENT: 100% COTTON

SURF BLUE, OFF BLACK, WHITE

S M L XL XXL



SURF BLUE



OFF BLACK



WHITE

D1 - HEAVYWEIGHT TEE

OBEY EUPHORIA PERSONIFIED

166913557

DESCRIPTION: HEAVYWEIGHT BOX FIT T-SHIRT

CONTENT: 100% COTTON

CORK, SILVER GREY, WHITE

S M L XL XXL



CORK



SILVER GREY



WHITE

D1 - HEAVYWEIGHT TEE

A PIECE OF HEAVEN

166913558

DESCRIPTION: HEAVYWEIGHT BOX FIT T-SHIRT

CONTENT: 100% COTTON

IRISH CREAM, OFF BLACK, WHITE

S M L XL XXL



IRISH CREAM



OFF BLACK



WHITE

D1 - HEAVYWEIGHT TEE

OBEY CITY WATCH DOG

167103546

DESCRIPTION: HEAVYWEIGHT LONG SLEEVE BOX FIT T-SHIRT

CONTENT: 100% COTTON

OFF BLACK, SEPIA, WHITE

S M L XL XXL



OFF BLACK



SEPIA



WHITE

D1 - HEAVYWEIGHT LONG SLEEVE TEE

OBEY EUPHORIA PERSONIFIED

167103556

DESCRIPTION: HEAVYWEIGHT LONG SLEEVE BOX FIT T-SHIRT

CONTENT: 100% COTTON

SILVER GREY, DIGITAL LAVENDER, WHITE

S M L XL XXL



SILVER GREY



DIGITAL LAVENDER



WHITE

D1 - HEAVYWEIGHT LONG SLEEVE TEE

am
上午 7
pm
下午



**SUSTAINABLE
PRINTABLES**

OBEY ORGANICS

163003581

DESCRIPTION: ORGANIC TEE

CONTENT: 100% ORGANIC COTTON

SEPIA, DEEP LAGOON, SAGO

S M L XL XXL



SEPIA



DEEP LAGOON



SAGO

D1 - ORGANIC TEE

OBEY SUNRISE

163003583

DESCRIPTION: ORGANIC TEE

CONTENT: 100% ORGANIC COTTON

AZURE BLUE, SEPIA, SAGO

S M L XL XXL



AZURE BLUE



SEPIA



SAGO

D1 - ORGANIC TEE

OBEE PEACE FLOWER

163003582

DESCRIPTION: ORGANIC TEE

CONTENT: 100% ORGANIC COTTON

FADED BLACK, ADVENTURE GREEN, SAGO

S M L XL XXL



FADED BLACK



ADVENTURE GREEN



SAGO

D1 - ORGANIC TEE

OBEE ALL THE ARMS WE NEED

163003584

DESCRIPTION: ORGANIC TEE

CONTENT: 100% ORGANIC COTTON

SAGO, DIGITAL LAVENDER, CORK

S M L XL XXL



SAGO



DIGITAL LAVENDER



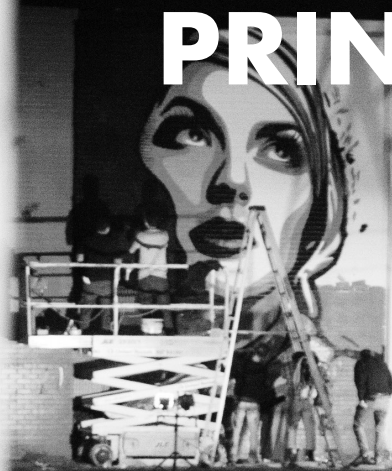
CORK

D1 - ORGANIC TEE

FALL 2023

DELIVERY TWO

LIFESTYLE PRINTABLES



OBEY WORLDWIDE CITIES

112843572

DESCRIPTION: PREMIUM HOOD

CONTENT: 58% COTTON 42% POLYESTER

DIGITAL LAVENDER, BLACK, SILVER GREY

S M L XL XXL



DIGITAL LAVENDER



BLACK



SILVER GREY

D2 - PREMIUM HOOD

OBEY SUBVERT

112843576

DESCRIPTION: PREMIUM HOOD

CONTENT: 58% COTTON 42% POLYESTER

ADVENTURE GREEN, BLACK, UNBLEACHED

S M L XL XXL



ADVENTURE GREEN



BLACK



UNBLEACHED

D2 - PREMIUM HOOD

OBEY PEACE DOG

112843567

DESCRIPTION: PREMIUM HOOD

CONTENT: 58% COTTON 42% POLYESTER

SURF BLUE, SEPIA

S M L XL XXL



SURF BLUE



SEPIA

D2 - PREMIUM HOOD

OBEY LOVE HURTS

112863573

DESCRIPTION: PREMIUM CREW

CONTENT: 58% COTTON 42% POLYESTER

UNBLEACHED, BLACK

S M L XL XXL



UNBLEACHED



BLACK

D2 - PREMIUM CREW

OBEY THE FUTURE STARTS TODAY

112863577

DESCRIPTION: PREMIUM CREW

CONTENT: 58% COTTON 42% POLYESTER

DIGITAL LAVENDER, BLACK

S M L XL XXL



BLACK

DIGITAL LAVENDER

D2 - PREMIUM CREW

OBEY HEAVEN ANGEL

112853561

DESCRIPTION: PREMIUM FLEECE ZIP HOOD

CONTENT: 58% COTTON 42% POLYESTER

ADVENTURE GREEN, BLACK

S M L XL XXL



BLACK

ADVENTURE GREEN

D2 - PREMIUM ZIP HOOD

OBEY REPETITION

165263559

DESCRIPTION: CLASSIC FIT T-SHIRT

CONTENT: 100% COTTON

SAND, GOOD GREY, CUCUMBER, WHITE

S M L XL XXL



SAND



GOOD GREY



CUCUMBER



WHITE

D2 - CLASSIC TEE

OBEY BOTANICAL

165263627

DESCRIPTION: CLASSIC FIT T-SHIRT

CONTENT: 100% COTTON

WHITE, BLACK, CORAL

S M L XL XXL



WHITE



BLACK



CORAL

D2 - CLASSIC TEE

OBEY LET YOUR MIND WANDER

165263566

DESCRIPTION: CLASSIC FIT T-SHIRT

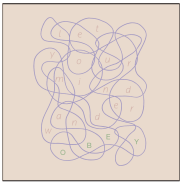
CONTENT: 100% COTTON

NAVY, CREAM, WHITE

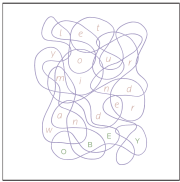
S M L XL XXL



NAVY



CREAM



WHITE

D2 - CLASSIC TEE

OBEY ONLY IN DREAMS

165263578

DESCRIPTION: CLASSIC FIT T-SHIRT

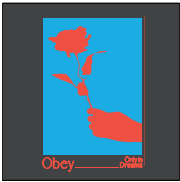
CONTENT: 100% COTTON

WHITE, BLACK, CREAM

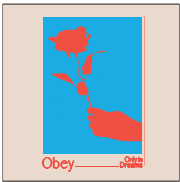
S M L XL XXL



WHITE



BLACK



CREAM

D2 - CLASSIC TEE

OBEY HEAVEN ANGEL

165263561

DESCRIPTION: CLASSIC FIT T-SHIRT

CONTENT: 100% COTTON

FOREST GREEN, BLACK, WHITE

S M L XL XXL



FOREST GREEN



BLACK



WHITE

D2 - CLASSIC TEE

OBEY GLOBAL BUTTERFLY

165263560

DESCRIPTION: CLASSIC FIT T-SHIRT

CONTENT: 100% COTTON

DIGITAL VIOLET, BLACK, SILT, WHITE

S M L XL XXL



DIGITAL VIOLET



BLACK



SILT



WHITE

D2 - CLASSIC TEE

OBEY PEACE DOG

165263567

DESCRIPTION: CLASSIC FIT T-SHIRT

CONTENT: 100% COTTON

CREAM, BLACK, WHITE

S M L XL XXL



CREAM



BLACK



WHITE

D2 - CLASSIC TEE

OBEY HYDRANT

165263562

DESCRIPTION: CLASSIC FIT T-SHIRT

CONTENT: 100% COTTON

WHITE, BROWN SUGAR, CITRUS

S M L XL XXL



WHITE



BROWN SUGAR



CITRUS

D2 - CLASSIC TEE

OBEY WORLDWIDE CITIES

166913572

DESCRIPTION: HEAVYWEIGHT BOX FIT T-SHIRT

CONTENT: 100% COTTON

WHITE, OFF BLACK, SURF BLUE, SILVER GREY

S M L XL XXL



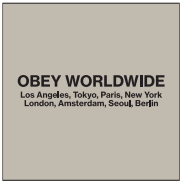
WHITE



OFF BLACK



SURF BLUE



SILVER GREY

D2 - HEAVYWEIGHT TEE

OBEY AROUND THE WORLD

166913574

DESCRIPTION: HEAVYWEIGHT BOX FIT T-SHIRT

CONTENT: 100% COTTON

DIGITAL LAVENDER, OFF BLACK, CORK, WHITE

S M L XL XXL



DIGITAL LAVENDER



OFF BLACK



CORK



WHITE

D2 - HEAVYWEIGHT TEE

OBEY SUBVERT

166913576

DESCRIPTION: HEAVYWEIGHT BOX FIT T-SHIRT

CONTENT: 100% COTTON

SEPIA, OFF BLACK, ADVENTURE GREEN, WHITE

S M L XL XXL



SEPIA



OFF BLACK



ADVENTURE GREEN



WHITE

D2 - HEAVYWEIGHT TEE

OBEY LOVE HURTS

166913573

DESCRIPTION: HEAVYWEIGHT BOX FIT T-SHIRT

CONTENT: 100% COTTON

DIGITAL LAVENDER, OFF BLACK, WHITE

S M L XL XXL



DIGITAL LAVENDER



OFF BLACK



WHITE

D2 - HEAVYWEIGHT TEE

OBEY THE FUTURE STARTS TODAY

166913577

DESCRIPTION: HEAVYWEIGHT BOX FIT T-SHIRT

CONTENT: 100% COTTON

SAGO, OFF BLACK, WHITE

S M L XL XXL



SAGO



OFF BLACK



WHITE

D2 - HEAVYWEIGHT TEE

OBEY IS MELTING

166913575

DESCRIPTION: HEAVYWEIGHT BOX FIT T-SHIRT

CONTENT: 100% COTTON

WHITE, OFF BLACK, MULBERRY PURPLE

S M L XL XXL



WHITE



OFF BLACK



MULBERRY PURPLE

D2 - HEAVYWEIGHT TEE

OBEY BOTANICAL

167103627

DESCRIPTION: HEAVYWEIGHT LONG SLEEVE BOX FIT T-SHIRT

CONTENT: 100% COTTON

SEPIA, OFF BLACK, ADVENTURE GREEN, WHITE

S M L XL XXL



SEPIA



OFF BLACK



ADVENTURE GREEN



WHITE

D2 - HEAVYWEIGHT LONG SLEEVE TEE

OBEY IS MELTING

167103575

DESCRIPTION: HEAVYWEIGHT LONG SLEEVE BOX FIT T-SHIRT

CONTENT: 100% COTTON

IRISH CREAM, OFF BLACK, WHITE

S M L XL XXL



IRISH CREAM



OFF BLACK



WHITE

D2 - HEAVYWEIGHT LONG SLEEVE TEE



SUSTAINABLE PRINTABLES

OBEY LEAVES

163003585

DESCRIPTION: ORGANIC TEE

CONTENT: 100% ORGANIC COTTON

CORK, FADED BLACK, SAGO

S M L XL XXL



CORK



FADED BLACK



SAGO

D2 - ORGANIC TEE

OBEY VASEY

163003586

DESCRIPTION: ORGANIC TEE

CONTENT: 100% ORGANIC COTTON

SAGO, ADVENTURE GREEN, DIGITAL LAVENDER

S M L XL XXL



SAGO



ADVENTURE GREEN



DIGITAL LAVENDER

D2 - ORGANIC TEE

OBEY MAISON D' OBEY

163003588

DESCRIPTION: ORGANIC TEE

CONTENT: 100% ORGANIC COTTON

ADVENTURE GREEN, DEEP LAGOON, SAGO

S M L XL XXL



DEEP LAGOON



SAGO

ADVENTURE GREEN

D2 - ORGANIC TEE

OBEY HOLD ON

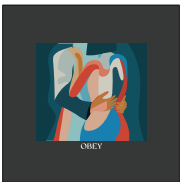
163003587

DESCRIPTION: ORGANIC TEE

CONTENT: 100% ORGANIC COTTON

DIGITAL LAVENDER, FADED BLACK, SAGO

S M L XL XXL



FADED BLACK



SAGO

DIGITAL LAVENDER

D2 - ORGANIC TEE

SALES REPRESENTATIVES

Pacific Northwest: Burl Darden
64171 Tumalo Rim Drive Bend, OR 97701
P: 541.385.3302 | F: 541.385.3302
E: burl@obeyclothing.com

Levi Campbell
2039 SE 29th Ave. Portland, OR 97214
P: 360.510.6811 | E: levi@obeyclothing.com

California | Nevada | Arizona | New Mexico: Mark Mazza
20091 Shorewood Circle Huntington Beach, CA 92649
P: 714.614.7901 | F: 714.964.3676
E: mdmsales@me.com

Dom Berroya
E: dom.mdmsales@icloud.com

Hawaii | Guam: Noel Marchan
95-1038 Ainamakua Dr. #H Mililani, HI 96789
P: 808.676.5290 | E: nmarchan@aol.com

Midwest: Laura Karels
13816 Shirley Dr. Burnsville, MN 55337
P: 952.461.4218 | F: 952.461.4219
E: laura_karels@yahoo.com

Northeast: Joe Comba
26 Avon rd. New rochelle, ny 10804
C: 914.393.9897 | E: joe@obeyclothing.com

Mid Atlantic | Southeast
Andrew Mercier
10777 Bishopville Rd. Bishopville, MD 21813
C: 443.614.4422 | E: mercier@obeyclothing.com

International: Nick Lhotsky
17462 Von Karman Ave. Irvine, CA 92614 U.S.A.
P: 949.596.8400 X263 | C: 443.373.3283 | F: 949.596.8437
E: nick@obeyclothing.com

17462 Von Karman Avenue Irvine, CA 92614

obeyclothing.com | obeygiant.com
949.596.8400