

OBEY

FALL 2022
WOMEN'S COLLECTION

THE OBEY CAMPAIGN CAN BE EXPLAINED AS AN EXPERIMENT IN PHENOMENOLOGY. THE FIRST AIM OF PHENOMENOLOGY IS TO REAWAKEN A SENSE OF WONDER ABOUT ONE'S ENVIRONMENT. THE OBEY CAMPAIGN ATTEMPTS TO STIMULATE CURIOSITY AND BRING PEOPLE TO QUESTION BOTH THE CAMPAIGN AND THEIR RELATIONSHIP WITH THEIR SURROUNDINGS. BECAUSE PEOPLE ARE NOT USED TO SEEING ADVERTISEMENTS OR PROPAGANDA FOR WHICH THE MOTIVE IS NOT OBVIOUS, FREQUENT AND NOVEL ENCOUNTERS WITH OBEY PROPAGANDA PROVOKE THOUGHT AND POSSIBLE FRUSTRATION, NEVERTHELESS REVITALIZING THE VIEWER'S PERCEPTION AND ATTENTION TO DETAIL. TO CATALYZE A THOUGHTFUL DIALOGUE DECONSTRUCTING THE PROCESS OF IMAGE ABSORPTION IS THE ULTIMATE GOAL. ALL IN THE NAME OF FUN AND OBSERVATION.

THE MEDIUM IS THE MESSAGE.



17462 VON KARMAN AVE.
IRVINE, CA 92614
U.S.A.
PHONE 949.596.8400 / FAX 949.596.8437
WWW.OBEYCLOTHING.COM
WWW.OBEYGIANT.COM

TABLE OF CONTENTS

FALL 2022

DELIVERY 1

7	9	16	22
OBEDY AWARENESS	SHEPARD FAIREY COLLECTION	MATCHING SETS	DENIM COLLECTION
26	31	35	40
JACKETS	SWEATERS	FLEECE	TOPS
45	49	52	81
BOTTOMS	DRESSES	UNISEX	HEADWEAR ACCESSORIES
	93		
	PRINTABLE'S		

DELIVERY 2

79
UNISEX

OBEY

IDEALS



SUSTAINABLE

ORGANIC

FAIRTRADE

RECYCLED



OBEY is committed to bettering itself in its manufacturing chain both on an environmental level but also with regard to worker's rights. We look at reducing our environmental footprint whenever possible - from choosing sustainable and socially responsible manufacturing techniques to delivering our clothing to you. This is an ongoing challenge and we continue to push ourselves every season to do better. We are constantly exploring new options in the market. In 2015, we started working with Fair Trade to offer certified garments that ensure economic empowerment to factory workers. We have moved to sustainable factories whenever possible and look to industry developments allowing us to use more recycled and renewable materials. These steps are important to our company and are an ongoing process. We respect everything it takes to make the garments we sell and want to ensure we are doing our best for the world around us.

Our IDEALS program highlights the products that are sustainably built, are produced in Fair Trade factories, are made from organic cotton, or are made from recycled fabrics. Look for these icons on select clothing in stores and online. They represent conscious approaches to our production process and are important to the OBEY ethos.

"Social responsibility and justice have always been very important to OBEY in both message and practice. We work with manufacturers that provide a fair wage and ethical working conditions, and have now made the further step to become an official Fair Trade USA partner (www.FairTradeusa.org). Our Fair Trade Certified™ garments are produced in factories that operate against rigorous social, environmental and economic standards, where workers can do their jobs with pride and dignity. For every Fair Trade Certified product sold, workers earn more money to fight poverty and fund community development.

Our hope is not only to benefit the workers of the Fair Trade factories, but to lead by example and promote the expansion of the Fair Trade apparel program."

- Shepard Fairey

OBEY IDEALS



This icon indicates that this garment is constructed sustainably. More than just sustainable raw materials, we consider the social environment, and economic impact of its production.



This icon indicates that this garment is constructed with organic cotton. Certified organic cotton following strict regulations without the use of GMO's harmful pesticides, or synthetic fertilizers.



Fair Trade USA's Fair Trade Certified™ label empowers you, the consumer, with the knowledge that your purchase has a positive impact on the people who sew and grow the products you love.

For every OBEY Fair Trade Certified™ product sold, a percentage is paid directly to a special fund for the workers that create our goods. They decide collectively how to spend these funds based on their communities greatest needs: from scholarships, school buses, to medical care, disaster and relief services.



This icon indicates that this garment is constructed with recycled materials. Per t-shirt, 1.6 recycled plastic bottles and .10lbs of recycled cotton are used.

Reduce, Reuse, Recycle!



FAIRTRADE



Fair Trade is a market-based approach that empowers factory workers and farmers to fight poverty, produce quality products, protect the environment and build strong thriving communities for generations to come. At the same time, Fair Trade USA's Fair Trade Certified™ label empowers you, the consumer, with the knowledge that your purchase has a positive impact on the people who sew and grow the products you love. For every OBEY Fair Trade Certified™ product sold, a percentage is paid directly to a special fund for the workers that create our goods. They decide collectively how to spend these funds based on the community's greatest needs: from scholarships and school buses, to medical care and disaster relief services.

OBEE AWARENESS

PLAYING FOR CHANGE

Playing For Change comprises a 501(c)3 non-profit organization, music and arts programs on four continents, and an expansive multimedia presence with a goal to unite communities via music. Born out of acclaimed documentaries *Playing for Change: A Cinematic Discovery of Street Musicians* and *Playing For Change: Peace Through Music*, GRAMMY® Award-winning music producer, engineer, and director Mark Johnson and Whitney Kroenke co-founded Playing For Change and the Playing For Change Foundation. Since 2007, the Foundation has opened 17 music and arts schools in fourteen countries, including Ghana, Nepal, Rwanda, Thailand, Bangladesh, Argentina, Morocco, Mexico, South Africa, Brazil, Mali, Costa Rica, and Uganda.

Conversation-starting content amplifies Playing For Change's message. The official PFC YouTube channel houses once-in-a-lifetime intercontinental collaborations with the likes of Bono, Keith Richards, Ringo Starr, Annie Lennox, Peter Dinklage and Robbie Robertson, tallying over 1.2 billion views to date. In 2019, Playing For Change received the Polar Music Prize. That same year, Playing For Change introduced its inaugural gala by honoring Pharrell Williams and MTV Chairman Bill Roedy. In the wake of the Global Pandemic, The United Nations, in celebration of their 75th Anniversary, sought out the Foundation to power the virtual extravaganza *Peace Through Music: A Global Event for Social Justice—200+ Musicians Unite for Peace*. Along the way, the movement has collaborated with The Bill and Melinda Gates Foundation, the Rock and Roll Hall of Fame®, Hard Rock, and numerous other tentpole organizations. Inspiring millions, this movement has preserved culture on the ground, democratized access to music education, and connected creators worldwide in unprecedented fashion.



OBEE Awareness was founded in 2007 as a way to educate and fundraise for causes and organizations ObEE supports. It is a unique program in that it constantly evolves to support important emerging issues and organizations. Each season the OBEE Clothing line features dedicated product to raise funds for these causes. All profits generated from the sale of OBEE awareness product are donated to the cause at hand. We encourage you to learn more and make a difference.

PLAYING FOR CHANGE \$27.50 / \$55

263452285

DESCRIPTION: PIGMENT DYED OVERSIZED BOX T-SHIRT

CONTENT: 100% COTTON

OFF BLACK, ITALIAN CLAY

XS S M L XL



OFF BLACK



ITALIAN CLAY

D1 - OBEY AWARENESS - PIGMENT CHOICE BOX TEE



SHEPARD FAIREY

ARTIST - ACTIVIST

Shepard Fairey, founder of OBEY and OBEY Clothing, was born in Charleston, South Carolina. He received his Bachelor of Fine Arts in Illustration at the Rhode Island School of Design in Providence, Rhode Island. In 1989 he created the "Andre the Giant has a Posse" sticker that transformed into the OBEY GIANT art campaign, with imagery that has changed the way people see art and the urban landscape. After 29 years, his work has evolved into an acclaimed body of art, which includes the 2008 "Hope" portrait of Barack Obama, found at the Smithsonian's National Portrait Gallery. The artist collaborated with Amplifier in 2017 to create the We The People series recognizable during the Women's Marches and other rallies around the world in defense of national and global social justice issues.

Fairey's stickers, guerilla street art presence, and 85 plus public murals are recognizable worldwide. His works are in the permanent collections of the Museum of Modern Art (MoMA), the Victoria and Albert Museum, the Smithsonian's National Portrait Gallery, the Boston Institute of Contemporary Art, the San Francisco Museum of Modern Art, and many others.

Fairey's distinct and recognizable style is unique to him and to OBEY. His lifestyle is the catalyst for all the brand does and the center point of influence and inspiration. This section isolates his work, from his classic graphic style to fine art renderings on garments. Each season, Shepard tackles new ideas and adds his special touch that makes OBEY what it is.

We hope you enjoy.

OBEY BEETLE \$30 / \$60

263502201

DESCRIPTION: ORGANIC LIGHTWEIGHT T-SHIRT

CONTENT: 100% ORGANIC COTTON

GINGER BISCUIT, OFF BLACK, RABBITS PAW

XS S M L XL



GINGER BISCUIT



OFF BLACK



RABBITS PAW

D1 - ORGANIC VINTAGE TEE

OBEY BLACK EARTH SOCIETY \$30 / \$60

263502202

DESCRIPTION: ORGANIC LIGHTWEIGHT T-SHIRT

CONTENT: 100% ORGANIC COTTON

SAGO, OFF BLACK, TURQUOISE TONIC

XS S M L XL



SAGO



OFF BLACK



TURQUOISE TONIC

D1 - ORGANIC VINTAGE TEE

OBEY MAGNIFY \$30 / \$60

263502203

DESCRIPTION: ORGANIC LIGHTWEIGHT T-SHIRT

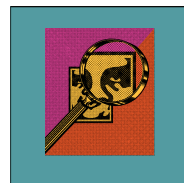
CONTENT: 100% ORGANIC COTTON

OFF BLACK, TURQUOISE TONIC, SAGO

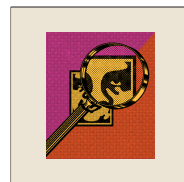
XS S M L XL



OFF BLACK



TURQUOISE TONIC



SAGO

D1 - ORGANIC VINTAGE TEE

HALT CONFORMITY \$30 / \$60

263502204

DESCRIPTION: ORGANIC LIGHTWEIGHT T-SHIRT

CONTENT: 100% ORGANIC COTTON

RABBITS PAW, OFF BLACK, SAGO

XS S M L XL



RABBITS PAW



OFF BLACK



SAGO

D1 - ORGANIC VINTAGE TEE

OBEY GHOST IN THE MACHINE \$30 / \$60

263502205

DESCRIPTION: ORGANIC LIGHTWEIGHT T-SHIRT

CONTENT: 100% ORGANIC COTTON

TURQUOISE TONIC, OFF BLACK, SAGO

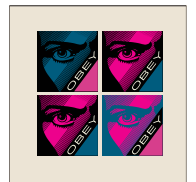
XS S M L XL



TURQUOISE TONIC



OFF BLACK



SAGO

D1 - ORGANIC VINTAGE TEE

FRAGILE CARGO \$30 / \$60

263502206

DESCRIPTION: ORGANIC LIGHTWEIGHT T-SHIRT

CONTENT: 100% ORGANIC COTTON

SAGO, OFF BLACK, TURQUOISE TONIC

XS S M L XL



SAGO



OFF BLACK



TURQUOISE TONIC

D1 - ORGANIC VINTAGE TEE

OBEY CULTIVATE HARMONY \$30 / \$60

263502207

DESCRIPTION: ORGANIC LIGHTWEIGHT T-SHIRT

CONTENT: 100% ORGANIC COTTON

GINGER BISCUIT, OFF BLACK, SAGO

XS S M L XL



GINGER BISCUIT



OFF BLACK



SAGO

D1 - ORGANIC VINTAGE TEE

OBEY VISUAL INDUSTRY \$30 / \$60

263502208

DESCRIPTION: ORGANIC LIGHTWEIGHT T-SHIRT

CONTENT: 100% ORGANIC COTTON

SAGO, RABBITS PAW, TURQUOISE TONIC

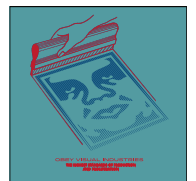
XS S M L XL



SAGO



RABBITS PAW



TURQUOISE TONIC

D1 - ORGANIC VINTAGE TEE

ICON STICKER PACK 2 \$8.50 / \$17

100270001

DESCRIPTION: ASSORTED STICKERS FOR THE OBEY FIENDS. SPREAD IT!

ASSORTED

O/S



ASSORTED

D1 - ESSENTIALS

COVERT TO OVERT BOOK \$45 / \$90

326000035M

DESCRIPTION: COVERT TO OVERT SHOWCASES SHEPARD FAIREY'S EVOLUTION FROM WORKS ON PAPER TO GRANDER ART INSTALLATIONS, CROSS-CULTURAL WORKS, AND MUSIC/ART COLLABORATIONS

ASSORTED

O/S



BLACK

D1 - ESSENTIALS



**MATCHING
SETS**

~~\$67.50 / \$135~~

281200113

FIT: RELAXED FIT

DESCRIPTION: CORDUROY WORK SHIRT

100% COTTON

SEAL ICE, IRISH CREAM

XS S M L XL



SEAL ICE



IRISH CREAM

D1 - MATCHING SETS

LUNA BAGGY CORD PANT \$72.50 / \$145

242000111

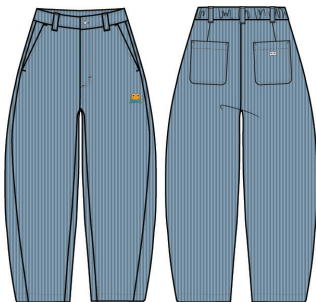
FIT: RELAXED FIT

DESCRIPTION: CORDUROY BIG PANTS

100% COTTON

SEAL ICE, IRISH CREAM

XS S M L XL



SEAL ICE



IRISH CREAM

D1 - MATCHING SETS

LIANE PLEATED SKIRT \$55 / \$110

411550094

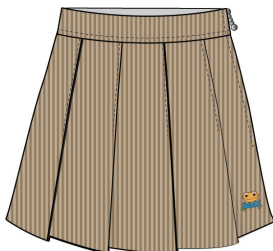
FIT: REGULAR FIT

DESCRIPTION: CORDUROY PLEATED MINI SKIRT

100% COTTON

IRISH CREAM

24 25 26 27 28 29 30 31 32



IRISH CREAM

D1 - MATCHING SETS

PIA FLANNEL SHIRT \$55 / \$110

281200116

FIT: REGULAR FIT

DESCRIPTION: CROPPED FLANNEL SHIRT

100% ORGANIC COTTON

LODEN FROST MULTI, VINTAGE BLUE MULTI

XS S M L XL



LODEN FROST MULTI



VINTAGE BLUE MULTI

D1 - MATCHING SETS

PIA FLANNEL PANT \$60 / \$120

242020094

FIT: REGULAR FIT

DESCRIPTION: FLANNEL RELAXED FIT HIGH WAISTED PANT

100% ORGANIC COTTON

LODEN FROST MULTI, VITANGE BLUE MULTI

24 25 26 27 28 29 30 31 32



LODEN FROST MULTI



VITANGE BLUE MULTI

D1 - MATCHING SETS

LEOPARD CARDIGAN LS \$45 / \$90

231030112

FIT: FITTED

DESCRIPTION: JACQUARD CARDIGAN

100% COTTON

PINK CLAY MULTI, SOAP SUDS MULTI

XS S M L XL



PINK CLAY MULTI



SOAP SUDS MULTI

D1 - MATCHING SETS

LEOPARD BRA TANK \$25 / \$50

234050132

FIT: FITTED

DESCRIPTION: WOMEN'S JACQUARD BRA TANK

100% COTTON

SOAP SUDS MULTI, PINK CLAY MULTI

XS S M L XL



SOAP SUDS MULTI



PINK CLAY MULTI

D1 - MATCHING SETS

LEOPARD SKIRT \$32.50 / \$65

411550096

FIT: MIDI FIT

DESCRIPTION: MIDI SKIRT WITH JACQUARD WITH LEOPARD PATTERN

100% COTTON

SOAP SUDS MULTI, PINK CLAY MULTI

XS S M L XL



SOAP SUDS MULTI



PINK CLAY MULTI

D1 - MATCHING SETS

ENZO QUARTER ZIP POLO \$55 / \$110

211620125

FIT: REGULAR FIT

DESCRIPTION: VELOUR QUARTER ZIP POLO LS WITH EMBROIDERY

65% COTTON 35% POLYESTER

LILAC CHALK

XS S M L XL



LILAC CHALK

D1 - MATCHING SETS

ENZO PANT \$55 / \$110

242030036

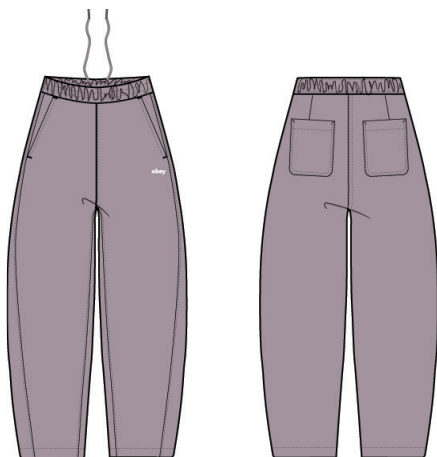
FIT: RELAXED FIT

DESCRIPTION: VELOUR BIG PANT WITH OBEY EMBROIDERY

65% COTTON 35% POLYESTER

LILAC CHALK

XS S M L XL



LILAC CHALK

D1 - MATCHING SETS

LUKE CROPPED ZIP UP HOOD \$90 / \$180

211640026

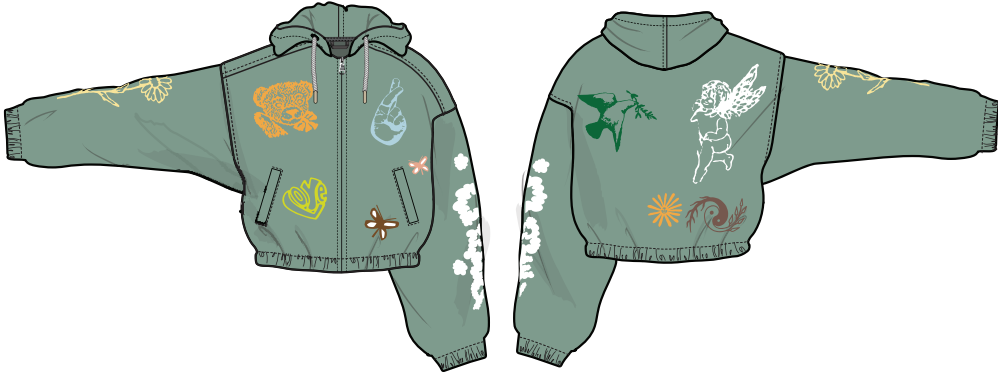
FIT: REGULAR FIT

DESCRIPTION: CROPPED ZIP UP HOOD

58% COTTON 42% POLYESTER

JADE

XS S M L XL



JADE

D1 - MATCHING SETS

LUKE PANT \$90 / \$180

242030037

FIT: RELAXED FIT

DESCRIPTION: : FLEECE BIG PANTS

58% COTTON 42% POLYESTER

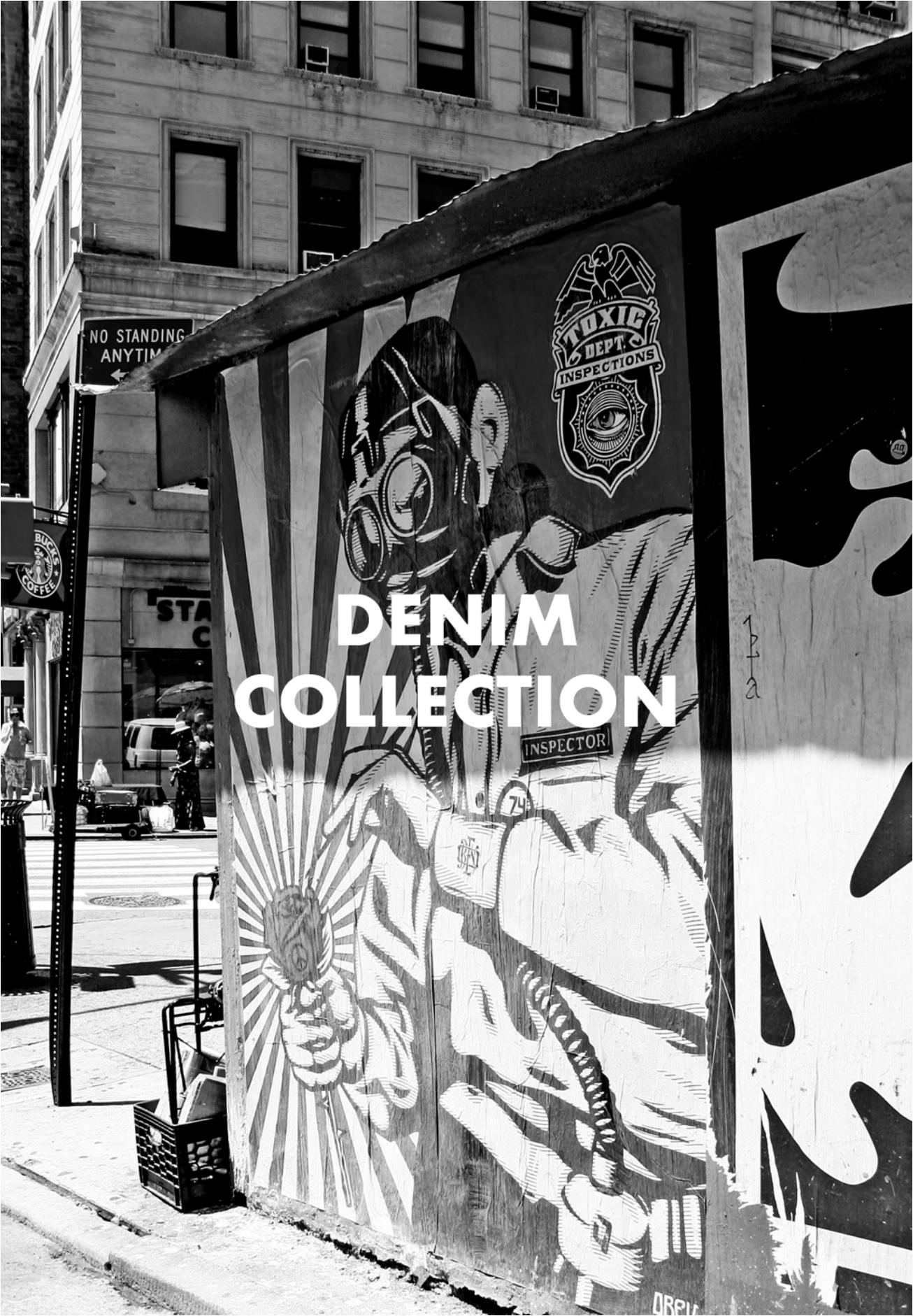
JADE

XS S M L XL



JADE

D1 - MATCHING SETS



DENIM COLLECTION

1
2
a

SIENNA SHIRT JACKET \$82.50 / \$165

221160033

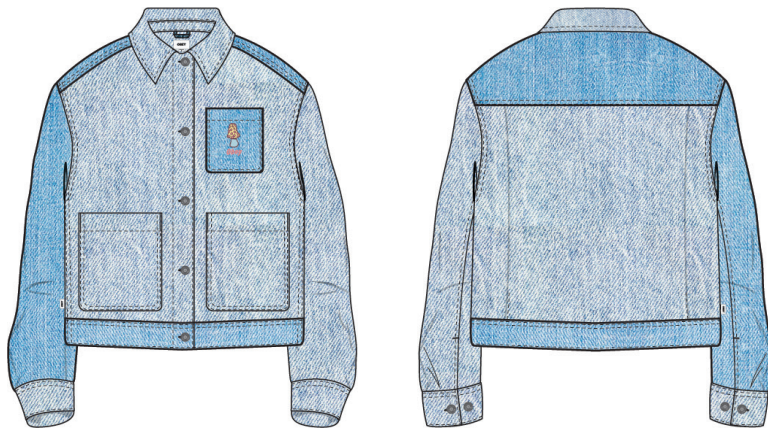
FIT: RELAXED FIT

DESCRIPTION: DENIM WORK SHIRT

100% COTTON

LIGHT INDIGO

XS S M L XL



LIGHT INDIGO

D1 - DEMIN COLLECTION

ELLIE MIDI SKIRT \$60 / \$120

411550095

FIT: REGULAR FIT

DESCRIPTION: DENIM MIDI SKIRT

100% COTTON

LIGHT INDIGO

24 25 26 27 28 29 30 31 32



LIGHT INDIGO

D1 - DEMIN COLLECTION

ZOEY BIG SHIRT \$82.50 / \$165

281200112

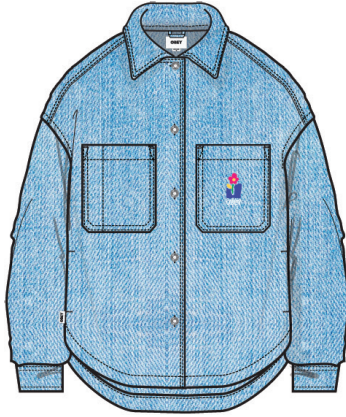
FIT: RELAXED FIT

DESCRIPTION: BIG DENIM SHIRT

100% COTTON

LIGHT INDIGO

XS S M L XL



LIGHT INDIGO

D1 - DEMIN COLLECTION

RORY FLARE DENIM \$67.50 / \$135

242010048

FIT: REGULAR FIT

DESCRIPTION: EMBROIDERED FLARE DENIM

100% COTTON

ICY WASH

24 25 26 27 28 29 30 31 32



ICY WASH

D1 - DEMIN COLLECTION

LEAH BAGGY DENIM \$72.50 / \$145

242020092

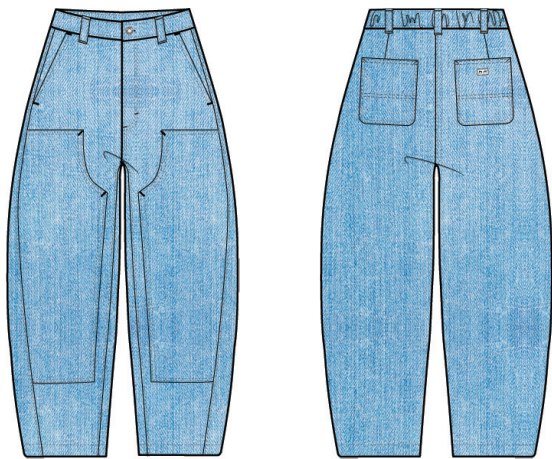
FIT: RELAXED FIT

DESCRIPTION: BAGGY DOUBLE KNEE DENIM

100% COTTON

LIGHT INDIGO

24 25 26 27 28 29 30 31 32



LIGHT INDIGO

D1 - DEMIN COLLECTION



Gehsteig benutzen

MONO.I

JACKETS



THEA JACKET \$110 / \$220

221800391

FIT: RELAXED FIT

DESCRIPTION: HOODED ZIP UP JACKET

100% COTTON

UNBLEACHED MULTI

XS S M L XL



UNBLEACHED MULTI

D1 - JACKETS

ALEXIS LINER JACKET \$110 / \$220

221800393

FIT: RELAXED FIT

DESCRIPTION: REVERSIBLE LINER JACKET

100% POLYESTER

DIGITAL VIOLET

XS S M L XL



*REVERSE SIDE

DIGITAL VIOLET

D1 - JACKETS

ALEXIS LINER JACKET \$110 / \$220

221800393

FIT: RELAXED FIT

DESCRIPTION: REVERSIBLE LINER JACKET

100% POLYESTER

BROWN SUGAR

XS S M L XL



*REVERSE SIDE

BROWN SUGAR

D1 - JACKETS

AIDEN SHERPA JACKET \$122.50 / \$245

221800392

FIT: REGULAR FIT

DESCRIPTION: REVERSIBLE SHERPA JACKET

100% POLYESTER

SWEET CORAL MULTI, GOLDEN HARVEST MULTI

XS S M L XL



*REVERSE SIDE

SWEET CORAL MULTI



*REVERSE SIDE

GOLDEN HARVEST MULTI

D1 - JACKETS

RACHEL PUFFER JACKET \$125 / \$250

221800394

FIT: REGULAR FIT

DESCRIPTION: REVERSIBLE PUFFER

100% POLYESTER

BUTTER, GOOD GREY

XS S M L XL



*REVERSE SIDE

BUTTER



*REVERSE SIDE

GOOD GREY

D1 - JACKETS

TAYLOR SHIRT JACKET \$110 / \$220

221160032

FIT: RELAXED FIT

DESCRIPTION: OVERSIZED SHIRT JACKET

100% POLYESTER

CREAM PLAID

XS S M L XL



CREAM PLAID

D1 - JACKETS

EVELYN VARSITY JACKET \$105 / \$210

221800395

FIT: REGULAR FIT

DESCRIPTION: SHERPA VARSITY JACKET

100% POLYESTER

MIDNIGHT

XS S M L XL



MIDNIGHT

D1 - JACKETS



COLLECTOR

SWEATERS

19.5

1950s • UNIO • 1950s

GATO SWEATER \$55 / \$110

251000105

FIT: REGULAR FIT

DESCRIPTION: CREWNECK SWEATER WITH EMBELISHMENT

100% COTTON

DARK CEDAR, UNBLEACHED

XS S M L XL



UNBLEACHED

DARK CEDAR

D1 - SWEATERS

IRENE SWEATER \$55 / \$110

251000106

FIT: REGULAR FIT

DESCRIPTION: CABLE KNIT STRIPE SWEATER

100% COTTON

UNBLEACHED MULTI, LIGHT KHAKI MULTI

XS S M L XL



LIGHT KHAKI MULTI

UNBLEACHED MULTI

D1 - SWEATERS

ARI SWEATER \$60 / \$120

251000104

FIT: RELAXED FIT

DESCRIPTION: DOLMAN POLO SWEATER

100% ACRYLIC

ORANGE OXIDE MULTI

XS S M L XL



ORANGE OXIDE MULTI

D1 - SWEATERS

AMBER CARDIGAN \$60 / \$120

251010061

FIT: REGULAR FIT

DESCRIPTION: DOLMAN SLEEVE CARDIGAN

100% ACRYLIC

DARK OAK MULTI, GALACTIC TEAL MULTI

XS S M L XL



GALACTIC TEAL MULTI

DARK OAK MULTI

D1 - SWEATERS

MYLES SWEATER VEST \$50 / \$100

251810003

FIT: REGULAR FIT

DESCRIPTION: OBEY CHECKERBOARD SWEATER

100% COTTON

SEPIA MULTI

XS S M L XL



SEPIA MULTI

D1 - SWEATERS



FLEECE

ASHER HOOD \$60 / \$120

211610115

FIT: RELAXED FIT

DESCRIPTION: POLAR FLEECE HOOD

100% POLYESTER

BROWN SUGAR

XS S M L XL



BROWN SUGAR

D1 - FLEECE

ELIAS ZIP HOOD \$72.50 / \$145

211640025

FIT: RELAXED FIT

DESCRIPTION: POLAR FLEECE ZIP UP HOODIE

100% POLYESTER

SEPIA

XS S M L XL



SEPIA

D1 - FLEECE

LINE ART CREW \$50 / \$100

211600146

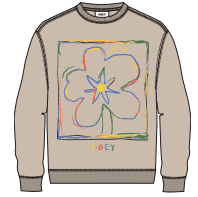
FIT: REGULAR FIT

DESCRIPTION: CREW NECK SWEATSHIRT WITH EMBROIDERY

58% COTTON 42% POLYESTER

BLACK, OAT MILK

XS S M L XL



OAT MILK

BLACK

D1 - FLEECE

CUPID CREW \$50 / \$100

211600145

FIT: REGULAR FIT

DESCRIPTION: CREW NECK SWEATSHIRT WITH EMBROIDERY

58% COTTON 42% POLYESTER

DIGITAL VIOLET, SATIN BRASS

XS S M L XL



SATIN BRASS

DIGITAL VIOLET

D1 - FLEECE

OBEY STUDIOS HOOD \$52.50 / \$105

211610118

FIT: REGULAR FIT

DESCRIPTION: HOODED SWEATSHIRT WITH OBEY EMBROIDERY

58% COTTON 42% POLYESTER

SATIN BRASS, UNBLEACHED

XS S M L XL



UNBLEACHED

SATIN BRASS

D1 - FLEECE

ZEN HOOD \$52.50 / \$105

211610119

FIT: REGULAR FIT

DESCRIPTION: HOODED SWEATSHIRT WITH OBEY EMBROIDERY

58% COTTON 42% POLYESTER

OAT MILK, DARK CEDAR

XS S M L XL



DARK CEDAR

OAT MILK

D1 - FLEECE

CUT IT OUT HOOD \$52.50 / \$105

211610116

FIT: REGULAR FIT

DESCRIPTION: HOODED SWEATSHIRT WITH OBEY EMBROIDERY

58% COTTON 42% POLYESTER

BLACK, DIGITAL VIOLET

XS S M L XL



BLACK



DIGITAL VIOLET

D1 - FLEECE

MELLOW TEDDY HOOD \$55 / \$110

211610117

FIT: REGULAR FIT

DESCRIPTION: HOODED SWEATSHIRT WITH OBEY EMBROIDERY

58% COTTON 42% POLYESTER

UNBLEACHED, BROWN SUGAR

XS S M L XL



UNBLEACHED



BROWN SUGAR

D1 - FLEECE



TOPS



VASE TEE SS \$35 / \$70

231080143

FIT: REGULAR FIT

DESCRIPTION: EMBROIDERED TEE

60% COTTON 40% MODAL

WHITE

XS S M L XL



WHITE

D1 -TOPS

KORI TEE SS \$35 / \$70

231080142

FIT: REGULAR FIT

DESCRIPTION: STRIPE LOGO TEE

100% COTTON

PINK MULTI

XS S M L XL



PINK MULTI

D1 -TOPS

SUNFLOWER TEE LS \$40 / \$80

231030114

FIT: REGULAR

DESCRIPTION: EMBROIDERED STRIPE LONG SLEEVE TEE

100% COTTON

BLACK MULTI

XS S M L XL



BLACK MULTI

D1 -TOPS

ROSE WAFFLE TEE LS \$47.50 / \$95

231030113

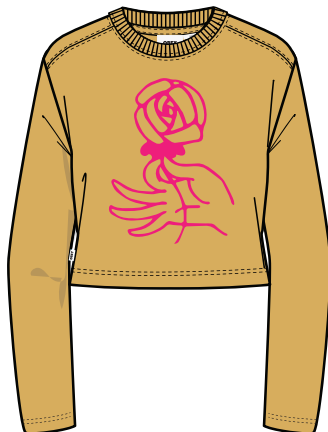
FIT: REGULAR FIT

DESCRIPTION: EMBROIDERED WAFFLE TEE LS

60% COTTON 40% POLYESTER

GOLDEN HARVEST, DUSTY GREEN

XS S M L XL



GOLDEN HARVEST



DUSTY GREEN

D1 -TOPS

TAILWIP TEE LS \$47.50 / \$95

231030115

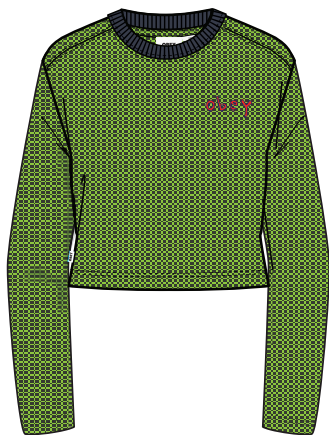
FIT: WIDE FIT

DESCRIPTION: VELOUR TEE WITH EMBROIDERY

100% COTTON

LIME GREEN MULTI, DIGITAL VIOLET MULTI

XS S M L XL



LIME GREEN MULTI



DIGITAL VIOLET MULTI

D1 -TOPS

GEORGIA POLO LS \$50 / \$100

231040007

FIT: REGULAR FIT

DESCRIPTION: VELOUR POLO TEE WITH EMBROIDERY LOGO

65% COTTON 35% POLYESTER

BEETROOT MULTI, DARK DENIM MULTI

XS S M L XL



BEETROOT MULTI



DARK DENIM MULTI

D1 -TOPS

LEO SHIRT \$55 / \$110

281200115

FIT: OVERSIZED FIT

DESCRIPTION: BIG PLAID SHIRT WITH EMBROIDERY AT CHEST

100% COTTON

UNIFORM GREEN MULTI

XS / S - M / L



UNIFORM GREEN MULTI

D1 -TOPS

CUT OUT PORTRAIT SHIRT \$67.50 / \$135

281200114

FIT: OVERSIZED FIT

DESCRIPTION: OVERSIZE PORTRAIT PRINT SHIRT

100% MODAL

DARK GREEN MULTI

XS / S - M / L



DARK GREEN MULTI

D1 -TOPS

SAUF



BNE

BOTTOMS



BRIGHTON CARPENTER PANT \$60 / \$120

242020087

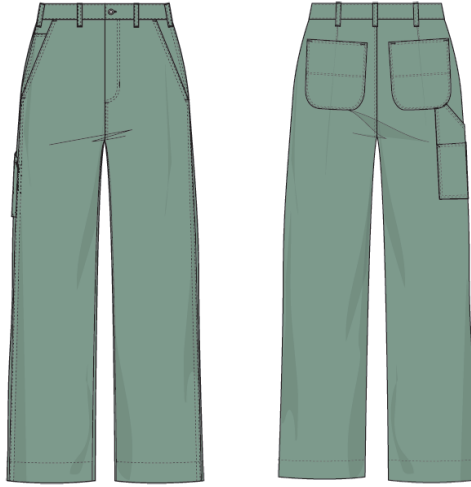
FIT: REGULAR FIT

DESCRIPTION: PAINTERS PANT

100% COTTON

JADE, BLACK, BROWN SUGAR, WHITE

24 25 26 27 28 29 30 31 32



JADE



BLACK



BROWN SUGAR



WHITE

D1- BOTTOMS

BRIGHTON PRINTED CARPENTER PANT \$67.50 / \$135

242020091

FIT: REGULAR FIT

DESCRIPTION: PAINTERS PANT

100% COTTON

BLACK MULTI, WAVELITE MULTI

24 25 26 27 28 29 30 31 32



BLACK MULTI



WAVELITE MULTI

D1- BOTTOMS

TAMI BAGGY PANT \$72.50 / \$145

242000112

FIT: RELAXED FIT

DESCRIPTION: BAGGY DOUBLE KNEE PANT

100% COTTON

OLIVE OIL, BONE WHITE

XS S M L XL



BONE WHITE

OLIVE OIL

D1- BOTTOMS

HAZEL CROPPED WIDE PANT \$80 / \$160

242000110

FIT: REGULAR FIT

DESCRIPTION: CROPPED WIDE LEG PANTS

100% COTTON

BOMBAY BROWN, AVOCADO

XS S M L XL



AVOCADO

BOMBAY BROWN

D1- BOTTOMS

MILA WORK PANT \$60 / \$120

242020093

FIT: REGULAR FIT

DESCRIPTION: TWILL WORK PANTS

100% COTTON

DARK CEDAR, SEPIA

24 25 26 27 28 29 30 31 32



DARK CEDAR

D1- BOTTOMS



DRESSES



KAYLIN OVERALL DRESS \$67.50 / \$135

401500400

FIT: REGULAR FIT

DESCRIPTION: OVERALL DRESS WITH PRINT

60% COTTON 40% POLYESTER

UNBLEACHED MULTI

XS S M L XL



UNBLEACHED MULTI

D1 - DRESSES

AMELIA DRESS \$67.50 / \$135

401500401

FIT: REGULAR FIT

DESCRIPTION: CORDUROY SHIRT DRESS

100% COTTON

JADE, IRISH CREAM

XS S M L XL



IRISH CREAM

JADE

D1 - DRESSES

ISABELLA DRESS \$75 / \$150

401500402

FIT: REGULAR FIT

DESCRIPTION: FRONT TIE DRESS

100% VISCOSE

BURNT OLIVE

XS S M L XL



BURNT OLIVE

D1 - DRESSES



YOUR AD HERE!

UNISEX



WE DESIGN
STAPLE ONLY
ON THE SET



DELIVERY ONE

BRUX QUILTED JACKET \$120 / \$240

PLEASE NOTE UNISEX STYLES ARE SIZED IN MEN'S SIZING

121800509

FIT: REGULAR FIT

DESCRIPTION: REVERSIBLE QUILTED JACKET

100% POLYESTER

BLACK - REVERSE SIDE - OLIVE OIL

XS S M L XL XXL



*REVERSE SIDE

BLACK

OLIVE OIL

D1 - JACKETS

BRUX QUILTED JACKET \$120 / \$240

* REVERSED SIDE

121800509

FIT: REGULAR FIT

DESCRIPTION: REVERSIBLE QUILTED JACKET

100% POLYESTER

BROWN SUGAR - REVERSE SIDE - DIGITAL VIOLET

XS S M L XL XXL



*REVERSE SIDE

BROWN SUGAR

DIGITAL VIOLET

D1 - JACKETS

NOMAD CORDUROY JACKET \$120 / \$240

PLEASE NOTE UNISEX STYLES ARE SIZED IN MEN'S SIZING

121800516

FIT: REGULAR FIT

DESCRIPTION: CORDUROY ZIP JACKET

100% COTTON

CATECHU WOOD, DARK CEDAR

XS S M L XL XXL



DARK CEDAR

CATECHU WOOD

D1 - JACKETS

DUKE HOODED JACKET \$120 / \$240

PLEASE NOTE UNISEX STYLES ARE SIZED IN MEN'S SIZING

121800513

FIT: REGULAR FIT

DESCRIPTION: CORDUROY HOODED ZIP JACKET

100% COTTON

IRISH CREAM, BLACK

XS S M L XL XXL



BLACK

IRISH CREAM

D1 - JACKETS

OBEY STEP HOOD \$55 / \$110

PLEASE NOTE UNISEX STYLES ARE SIZED IN MEN'S SIZING

112470174

FIT: REGULAR FIT

DESCRIPTION: FLEECE HOOD WITH LOGO EMBROIDERY

58% COTTON 42% POLYESTER

JADE, BLACK

XS S M L XL XXL



JADE



BLACK

D1 - SPECIALTY FLEECE

OBEY SEVEN HOOD \$55 / \$110

PLEASE NOTE UNISEX STYLES ARE SIZED IN MEN'S SIZING

112470175

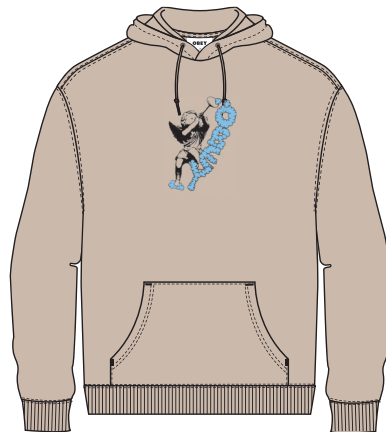
FIT: REGULAR FIT

DESCRIPTION: FLEECE HOOD WITH LOGO EMBROIDERY

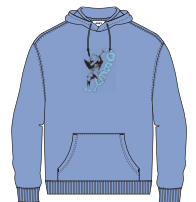
58% COTTON 42% POLYESTER

OAT MILK, DIGITAL VIOLET

XS S M L XL XXL



OAT MILK



DIGITAL VIOLET

D1 - SPECIALTY FLEECE

DISCO DUCK CREW \$55 / \$110

PLEASE NOTE UNISEX STYLES ARE SIZED IN MEN'S SIZING

112480127

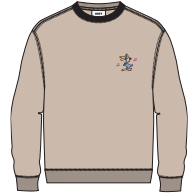
FIT: REGULAR FIT

DESCRIPTION: FLEECE CREW NECK WITH EMBROIDERY

58% COTTON 42% POLYESTER

DIGITAL VIOLET, OAT MILK

XS S M L XL XXL



OAT MILK

DIGITAL VIOLET

D1 - SPECIALTY FLEECE

TIMELESS RECYCLED HEAVYWEIGHT HOOD \$62.50 / \$125

PLEASE NOTE UNISEX STYLES ARE SIZED IN MEN'S SIZING

112470159

FIT: REGULAR FIT

DESCRIPTION: RECYCLED HEAVY WEIGHT HOOD WITH OBEY BRANDING

73% RECYCLED COTTON 27% RECYCLED POLY

BROWN SUGAR PIGMENT, JADE PIGMENT, DIGITAL VIOLET PIGMENT

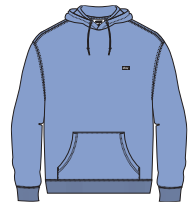
XS S M L XL XXL



BROWN SUGAR PIGMENT



JADE PIGMENT



DIGITAL VIOLET PIGMENT

D1 - RECYCLED KNITS & SOCIALTY FLEECE

TIMELESS RECYCLED HEAVYWEIGHT CREW \$55 / \$110

PLEASE NOTE UNISEX STYLES ARE SIZED IN MEN'S SIZING

112480114

FIT: REGULAR FIT

DESCRIPTION: RECYCLED HEAVY WEIGHT CREW WITH OBEY BRANDING

60% RECYCLED COTTON 40% RECYCLED POLYESTER

DIGITAL VIOLET PIGMENT, JADE PIGMENT, BROWN SUGAR PIGMENT

XS S M L XL XXL



DIGITAL VIOLET PIGMENT



JADE PIGMENT



BROWN SUGAR PIGMENT

D1 - RECYCLED KNITS & SOCIALTY FLEECE

BOLD RECYCLED HOOD \$62.50 / \$125

PLEASE NOTE UNISEX STYLES ARE SIZED IN MEN'S SIZING

112470160

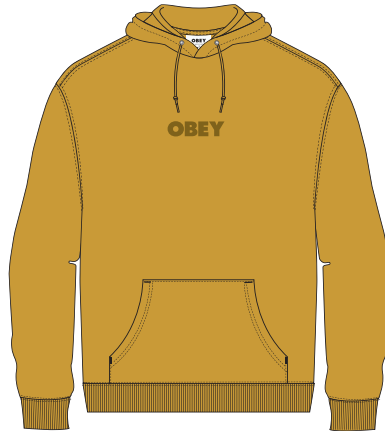
FIT: REGULAR FIT

DESCRIPTION: HOODED SWEATSHIRT MADE FROM RECYCLED FIBERS WITH LOGO EMBROIDERY

73% RECYCLED COTTON 27% RECYCLED POLY

SATIN BRASS PIGMENT, LILAC CHALK PIGMENT, BOMBAY BROWN PIGMENT

XS S M L XL XXL



SATIN BRASS PIGMENT



LILAC CHALK PIGMENT



BOMBAY BROWN PIGMENT

D1 - RECYCLED KNITS & SOCIALTY FLEECE

BOLD RECYCLED CREW \$55 / \$110

PLEASE NOTE UNISEX STYLES ARE SIZED IN MEN'S SIZING

112480115

FIT: REGULAR FIT

DESCRIPTION: CREW NECK SWEATSHIRT MADE FROM RECYCLED FIBERS WITH LOGO EMBROIDERY

73% RECYCLED COTTON 27% RECYCLED POLY

LILAC CHALK PIGMENT, SATIN BRASS PIGMENT, BOMBAY BROWN PIGMENT

XS S M L XL XXL



LILAC CHALK PIGMENT



SATIN BRASS PIGMENT



BOMBAY BROWN PIGMENT

D1 - RECYCLED KNITS & SOCIALTY FLEECE

OBEY TAB HOOD \$55 / \$110

112470161

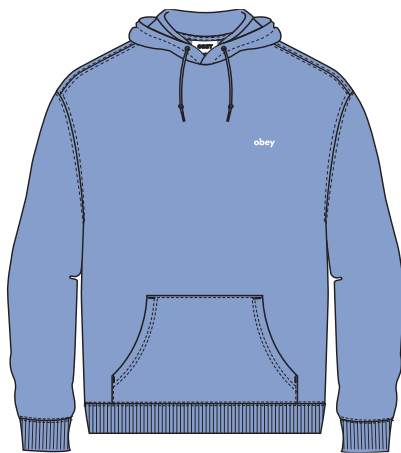
DESCRIPTION: FLEECE HOOD WITH LOGO EMBROIDERY

58% COTTON 42% POLYESTER

DIGITAL VIOLET, BLACK, BROWN SUGAR

XS S M L XL XXL

PLEASE NOTE UNISEX STYLES ARE SIZED IN MEN'S SIZING



DIGITAL VIOLET



JADE



BROWN SUGAR

D1 - CORE EMBELLISHED FLEECE

OBEY TAB CREW \$50 / \$100

112480117

DESCRIPTION: FLEECE CREW NECK WITH LOGO EMBROIDERY

58% COTTON 42% POLYESTER

BLACK, BROWN SUGAR, DIGITAL VIOLET

XS S M L XL XXL

PLEASE NOTE UNISEX STYLES ARE SIZED IN MEN'S SIZING



BLACK



BROWN SUGAR



DIGITAL VIOLET

D1 - CORE EMBELLISHED FLEECE

OBEY TAB ZIP HOOD \$57.50 / \$115

112460008

DESCRIPTION: FLEECE HOOD WITH LOGO EMBROIDERY

58% COTTON 42% POLYESTER

BROWN SUGAR, BLACK, DIGITAL VIOLET

XS S M L XL XXL

PLEASE NOTE UNISEX STYLES ARE SIZED IN MEN'S SIZING



BROWN SUGAR



BLACK



DIGITAL VIOLET

D1 - CORE EMBELLISHED FLEECE

LOWER CASE MINI BOX HOOD \$60 / \$120

112470173

DESCRIPTION: PREMIUM EXTRA HEAVY WEIGHT HOODED FLEECE WITH EMBROIDERY

70% COTTON 30% POLYESTER

OAT MILK, BLACK, DARK CEDAR

XS S M L XL XXL

PLEASE NOTE UNISEX STYLES ARE SIZED IN MEN'S SIZING



OAT MILK



BLACK



DARK CEDAR

D1 - CORE EMBELLISHED FLEECE

OBEY LOWERCASE HOOD \$55 / \$110

112470162

DESCRIPTION: FLEECE HOOD WITH LOGO EMBROIDERY

58% COTTON 42% POLYESTER

ORANGE OXIDE, BLACK, DARK CEDAR

XS S M L XL XXL

PLEASE NOTE UNISEX STYLES ARE SIZED IN MEN'S SIZING



ORANGE OXIDE



BLACK



DARK CEDAR

D1 - CORE EMBELLISHED FLEECE

OBEY LOWERCASE CREW \$50 / \$100

112480125

DESCRIPTION: FLEECE CREW NECK WITH LOGO EMBROIDERY

58% COTTON 42% POLYESTER

BLACK, DARK CEDAR, OAT MILK

XS S M L XL XXL

PLEASE NOTE UNISEX STYLES ARE SIZED IN MEN'S SIZING



BLACK



DARK CEDAR



OAT MILK

D1 - CORE EMBELLISHED FLEECE

STRAGGLER FLOODED PANT \$50 / \$100

PLEASE NOTE UNISEX STYLES ARE SIZED IN MEN'S SIZING

142020113

FIT: STANDARD FIT

DESCRIPTION: FLOODED PANT

60% COTTON 39% POLYESTER 1% SPANDEX

BLACK, SEPIA BROWN, LEAF

26 27 28 29 30 31 32 33 34 36 38



BLACK



SEPIA BROWN



LEAF

D1 - BOTTOMS

STRAGGLER PANT \$50 / \$100

PLEASE NOTE UNISEX STYLES ARE SIZED IN MEN'S SIZING

142020150

FIT: STANDARD FIT

DESCRIPTION: STRAIGHT LEG PANT

60% COTTON 39% POLYESTER 1% SPANDEX

SEPIA BROWN, BLACK, LEAF

26 27 28 29 30 31 32 33 34 36 38



SEPIA BROWN



BLACK



LEAF

D1 - BOTTOMS

HARDWORK CARPENTER PANT \$55 / \$110

PLEASE NOTE UNISEX STYLES ARE SIZED IN MEN'S SIZING

142020184

FIT: REGULAR FIT

DESCRIPTION: CARPENTER PANT

100% COTTON

DARK CEDAR, BLACK, WHITE

26 27 28 29 30 31 32 33 34 36 38



DARK CEDAR



BLACK



WHITE

D1 - BOTTOMS

ESTATE PANT \$55 / \$110

PLEASE NOTE UNISEX STYLES ARE SIZED IN MEN'S SIZING

142020183

FIT: RELAXED FIT

DESCRIPTION: HEAVYWEIGHT TWILL PANT WITH SINGLE PLEAT FRONT

100% COTTON

IRISH CREAM, BLACK, DARK BROWN

26 27 28 29 30 31 32 33 34 36 38



IRISH CREAM



BLACK



DARK BROWN

D1 - BOTTOMS

TURNER TWILL PANT \$60 / \$120

PLEASE NOTE UNISEX STYLES ARE SIZED IN MEN'S SIZING

142010083

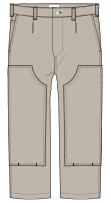
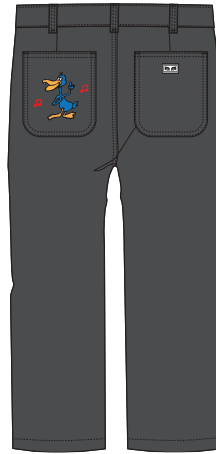
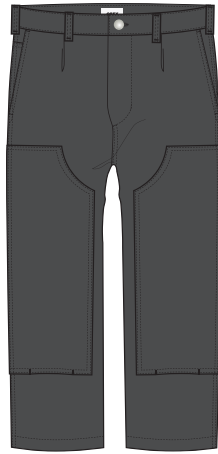
FIT: RELAXED FIT

DESCRIPTION: DOUBLE KNEE WORK PANTS WITH PATCH POCKETS

100% COTTON

BLACK, IRISH CREAM

26 27 28 29 30 31 32 33 34 36 38



IRISH CREAM

BLACK

D1 - BOTTOMS

FUBAR PLEATED PANT \$55 / \$110

PLEASE NOTE UNISEX STYLES ARE SIZED IN MEN'S SIZING

142020201

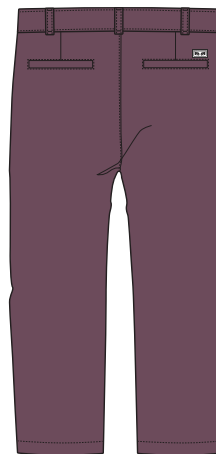
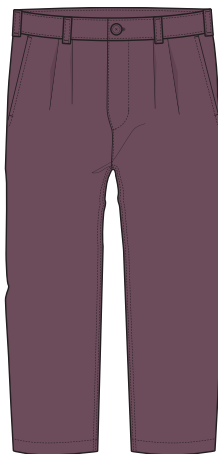
FIT: RELAXED FIT

DESCRIPTION: RELAXED FIT PLEATED PANTS

60% POLY 40% RAYON

BEETROOT, BLACK

26 27 28 29 30 31 32 33 34 36 38



BLACK

BEETROOT

D1 - BOTTOMS

FUBAR PLEATED PLAID PANT

\$55 / \$110

PLEASE NOTE UNISEX STYLES ARE SIZED IN MEN'S SIZING

14202022

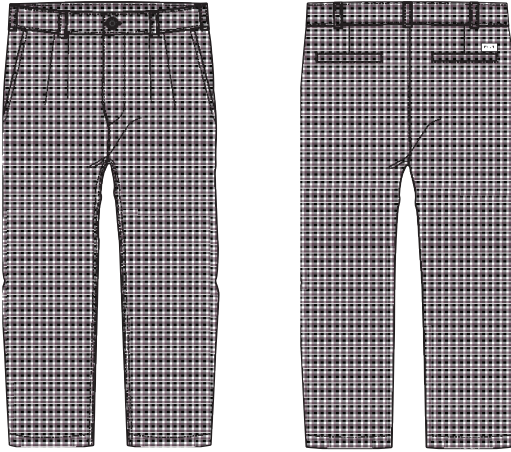
FIT: RELAXED FIT

DESCRIPTION: RELAXED FIT PLEATED PANT

60% POLY 40% RAYON

BEETROOT MULTI

26 27 28 29 30 31 32 33 34 36 38



BEETROOT MULTI

D1 - BOTTOMS

EASY TWILL PANT

\$50 / \$100

PLEASE NOTE UNISEX STYLES ARE SIZED IN MEN'S SIZING

142020142

FIT: RELAXED FIT

DESCRIPTION: ELASTIC WAIST TWILL PANT

100% COTTON

IRISH CREAM, BLACK, FIELD GREEN

XS S M L XL XXL



IRISH CREAM



BLACK



FIELD GREEN

D1 - BOTTOMS

PLEASE NOTE UNISEX STYLES ARE SIZED IN MEN'S SIZING

EASY CORD PANT \$60 / \$120

142020195

FIT: RELAXED FIT

DESCRIPTION: WIDE WALE ELASTIC CORDUROY PANT

100% COTTON

SEPIA, IRISH CREAM, DARK CEDAR, BROWN SUGAR

XS S M L XL XXL



SEPIA



IRISH CREAM



DARK CEDAR



BROWN SUGAR

D1 - BOTTOMS

EASY RIPSTOP CARGO PANT \$60 / \$120

142020196

FIT: RELAXED FIT

DESCRIPTION: ELASTIC WAIST RIPSTOP CARGO PANT

100% COTTON

BLACK, FIELD GREEN, DARK BROWN

XS S M L XL XXL



BLACK



FIELD GREEN



DARK BROWN

PLEASE NOTE UNISEX STYLES ARE SIZED IN MEN'S SIZING

D1 - BOTTOMS

BIG EASY CANVAS PANT \$65 / \$130

PLEASE NOTE UNISEX STYLES ARE SIZED IN MEN'S SIZING

142020203

FIT: RELAXED FIT

DESCRIPTION: ELASTIC WAIST DOUBLE KNEE CANVAS PANT

100% COTTON

SMOKEY OLIVE, DARK BROWN

XS S M L XL XXL



DARK BROWN

SMOKEY OLIVE

D1 - BOTTOMS

OBEY BOLD \$52.50 / \$105

PLEASE NOTE UNISEX STYLES ARE SIZED IN MEN'S SIZING

142043045

FIT: RELAXED FIT

DESCRIPTION: SWEATPANT WITH SCREEN PRINT

100% COTTON

BLACK, BROWN SUGAR, OAT MILK

XS S M L XL XXL



BROWN SUGAR



OAT MILK

BLACK

D1 - BOTTOMS

OBEY CHERUBS \$52.50 / \$105

PLEASE NOTE UNISEX STYLES ARE SIZED IN MEN'S SIZING

142043046

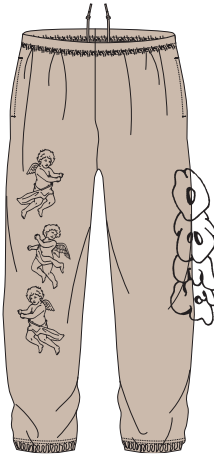
FIT: RELAXED FIT

DESCRIPTION: SWEATPANT WITH EMBROIDERY

100% COTTON

OAT MILK, BLACK

XS S M L XL XXL



OAT MILK



BLACK

D1 - BOTTOMS

BENDER DENIM \$55 / \$110 (FADED BLACK \$62.50 / \$125)

PLEASE NOTE UNISEX STYLES ARE SIZED IN MEN'S SIZING

142010080

FIT: STANDARD FIT

DESCRIPTION: STANDARD FIT 5 POCKET DENIM

100% COTTON

FADED BLACK, STONE WASHED INDIGO, LIGHT INDIGO

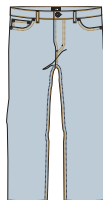
26 27 28 29 30 31 32 33 34 36 38



FADED BLACK



STONE WASHED INDIGO



LIGHT INDIGO

D1 - DENIM COLLECTION

HARDWORK DENIM \$55 / \$110 (FADED BLACK \$62.50 / \$125)

PLEASE NOTE UNISEX STYLES ARE SIZED IN MEN'S SIZING

142010077

FIT: RELAXED FIT

DESCRIPTION: RELAXED FIT BUTTON FLY DENIM WITH EYES LABELING

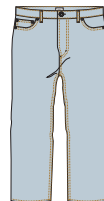
100% COTTON

STONEWASH INDIGO, LIGHT INDIGO, FADED BLACK

26 27 28 29 30 31 32 33 34 36 38



STONEWASH INDIGO



LIGHT INDIGO



FADED BLACK

D1 - DENIM COLLECTION

HARDWORK CARPENTER DENIM \$60 / \$120

PLEASE NOTE UNISEX STYLES ARE SIZED IN MEN'S SIZING

142010078

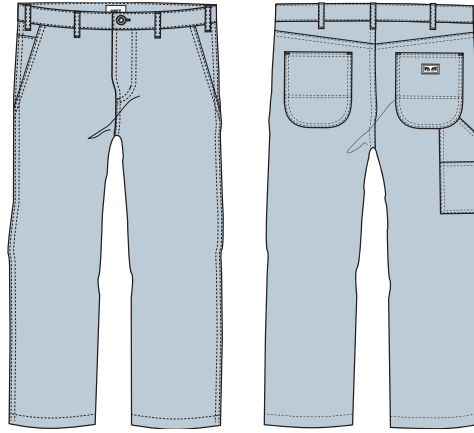
FIT: RELAXED FIT

DESCRIPTION: DENIM CARPENTER PANT

100% COTTON

LIGHT INDIGO, STONEWASH INDIGO

26 27 28 29 30 31 32 33 34 36 38



STONEWASH INDIGO

LIGHT INDIGO

D1 - DENIM COLLECTION

FUBAR PLEATED DENIM \$65 / \$130

PLEASE NOTE UNISEX STYLES ARE SIZED IN MEN'S SIZING

142010082

FIT: RELAXED FIT

DESCRIPTION: RELAXED FIT DENIM PANTS

100% COTTON

FADED BLACK, LIGHT INDIGO

26 27 28 29 30 31 32 33 34 36 38



LIGHT INDIGO

FADED BLACK

D1 - DENIM COLLECTION

EASY DENIM PANT

\$57.50 / \$115
(FADED BLACK \$62.50 / \$125)

PLEASE NOTE UNISEX STYLES ARE SIZED IN MEN'S SIZING

142010079

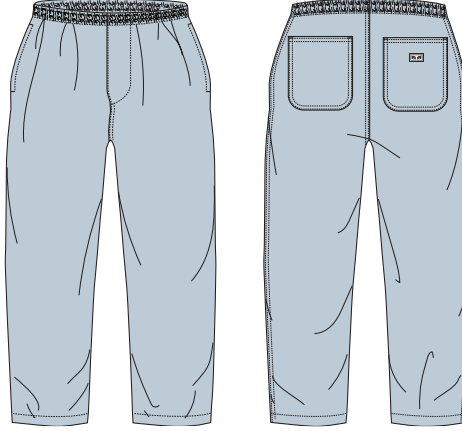
FIT: RELAXED FIT

DESCRIPTION: ELASTIC WAIST PATCH POCKET DENIM PANT

100% COTTON

LIGHT INDIGO, FADED BLACK

XS S M L XL XXL



FADED BLACK

LIGHT INDIGO

D1 - DENIM COLLECTION

HARDWORK JINX DENIM

\$67.50 / \$135

PLEASE NOTE UNISEX STYLES ARE SIZED IN MEN'S SIZING

142010085

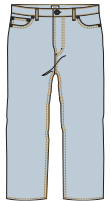
FIT: RELAXED FIT

DESCRIPTION: RELAXED FIT BUTTON FLY DENIM WITH EYES LABELING

100% COTTON

FADED BLACK, LIGHT INDIGO

XS S M L XL XXL



LIGHT INDIGO

FADED BLACK

D1 - DENIM COLLECTION

DEPOT DENIM PANT \$67.50 / \$135

PLEASE NOTE UNISEX STYLES ARE SIZED IN MEN'S SIZING

142010084

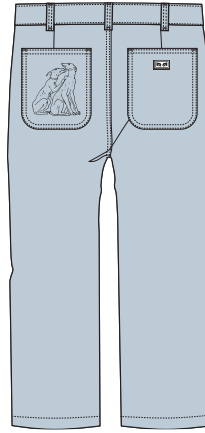
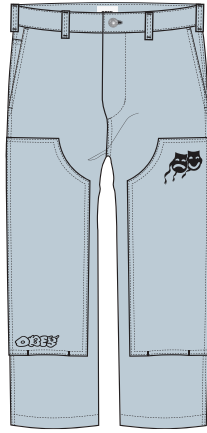
FIT: RELAXED FIT

DESCRIPTION: DOUBLE KNEE WORK PANTS WITH PATCH POCKETS

100% COTTON

LIGHT INDIGO, FADED BLACK

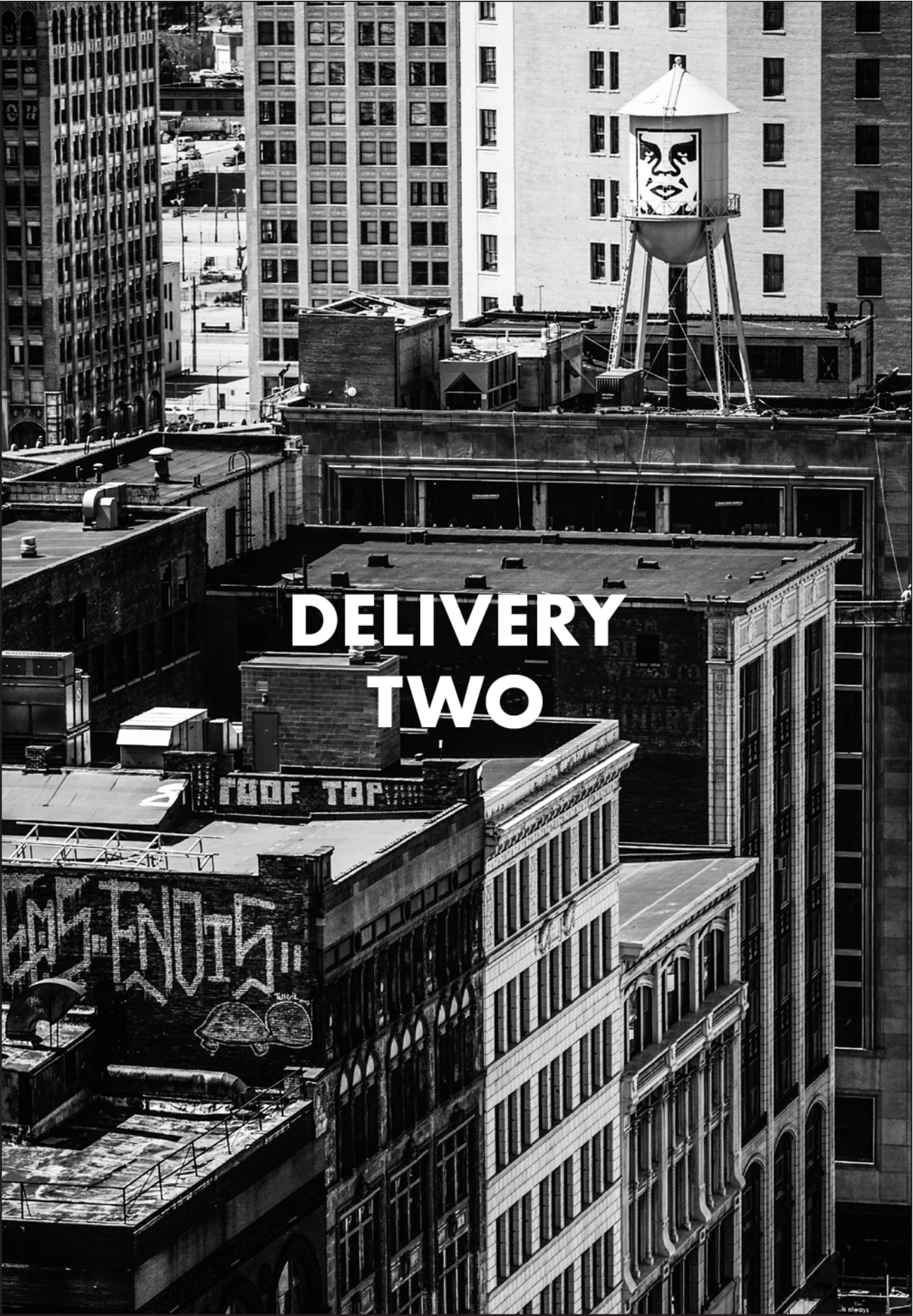
XS S M L XL XXL



FADED BLACK

LIGHT INDIGO

D1 - DENIM COLLECTION



DELIVERY TWO

ROOF TOP

ARTS-ENTERTAINMENT

LARSON JACKET \$110 / \$220

PLEASE NOTE UNISEX STYLES ARE SIZED IN MEN'S SIZING

121800515

FIT: REGULAR FIT

DESCRIPTION: CORDUROY JACKET

100% COTTON

BLACK, CATECHU WOOD

XS S M L XL XXL



CATECHU WOOD

BLACK

D2 - JACKETS

DOZER PARKA \$132.50 / \$265

PLEASE NOTE UNISEX STYLES ARE SIZED IN MEN'S SIZING

121800510

FIT: OVERSIZED FIT

DESCRIPTION: INSULATED PARKA WITH ADJUSTABLE HOOD

68% COTTON 32% NYLON

ARMY, BLACK

XS S M L XL XXL



BLACK

ARMY

D2 - JACKETS

TIME VARSITY JACKET \$170 / \$340

PLEASE NOTE UNISEX STYLES ARE SIZED IN MEN'S SIZING

121800520

FIT: REGULAR FIT

DESCRIPTION: VARSITY JACKET WITH EMBROIDERY

52% POLYESTER 45% WOOL 2% VICOSE 1% NYLON

BROWN SUGAR, BLACK

XS S M L XL XXL



BLACK

BROWN SUGAR

D2 - JACKETS

AGES JACKET \$110 / \$220

PLEASE NOTE UNISEX STYLES ARE SIZED IN MEN'S SIZING

121800505

FIT: REGULAR FIT

DESCRIPTION: ZIP JACKET WITH PATCH POCKETS

100% POLYESTER

GREY MULTI

XS S M L XL XXL



GREY MULTI

D2 - JACKETS

BISTRO SHERPA JACKET \$102.50 / \$205

PLEASE NOTE UNISEX STYLES ARE SIZED IN MEN'S SIZING

121800508

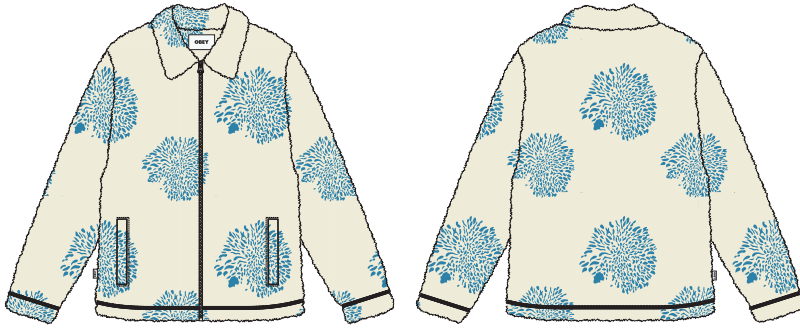
FIT: REGULAR FIT

DESCRIPTION: INSTARSIA SHERPA ZIP JACKET

100% POLYESTER

NATURAL MULTI, DIGITAL VIOLET MULTI

XS S M L XL XXL



NATURAL MULTI

DIGITAL VIOLET MULTI

D2 - JACKETS

OBEY RIO HOOD \$52.50 / \$105

PLEASE NOTE UNISEX STYLES ARE SIZED IN MEN'S SIZING

112470176

FIT: REGULAR FIT

DESCRIPTION: FLEECE HOOD WITH EMBROIDERY

58% COTTON 42% POLYESTER

BROWN SUGAR, DARK CEDAR

XS S M L XL XXL



DARK CEDAR

BROWN SUGAR

D2 - SPECIALTY FLEECE

OBEY CRUDE HOOD \$55 / \$110

PLEASE NOTE UNISEX STYLES ARE SIZED IN MEN'S SIZING

112470177

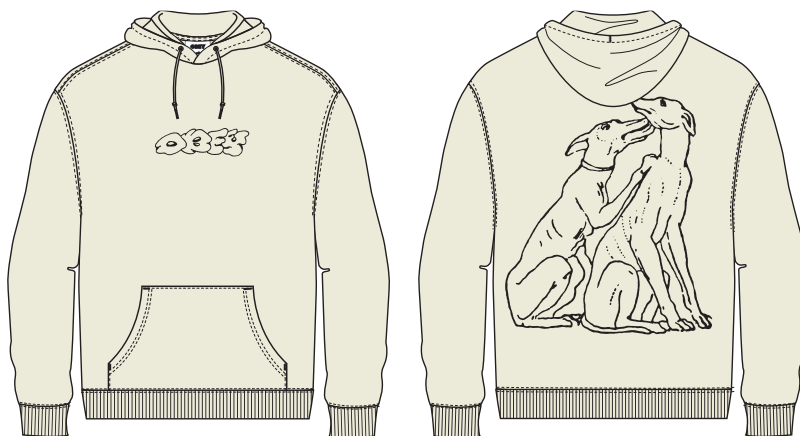
FIT: REGULAR FIT

DESCRIPTION: FLEECE HOOD WITH EMBROIDERY

58% COTTON 42% POLYESTER

UNBLEACHED, BLACK

XS S M L XL XXL



BLACK

UNBLEACHED

D2 - SPECIALTY FLEECE

POWER BALANCE CREW \$55 / \$110

PLEASE NOTE UNISEX STYLES ARE SIZED IN MEN'S SIZING

112480126

FIT: REGULAR FIT

DESCRIPTION: FLEECE CREW NECK WITH EMBROIDERY

58% COTTON 42% POLYESTER

BLACK, UNBLEACHED

XS S M L XL XXL



UNBLEACHED

BLACK

D2 - SPECIALTY FLEECE

SCRIBBLES EXTRA HEAVY HOOD \$60 / \$120

PLEASE NOTE UNISEX STYLES ARE SIZED IN MEN'S SIZING

112470172

FIT: CLASSIC FIT

DESCRIPTION: PREMIUM EXTRA HEAVY HOODED FLEECE WITH EMBROIDERY

70% COTTON 30% POLYESTER

BLACK, DARK CEDAR

XS S M L XL XXL



DARK CEDAR

BLACK

D2 - SPECIALTY FLEECE

OBEY DRAGON ZIP HOOD

PLEASE NOTE UNISEX STYLES ARE SIZED IN MEN'S SIZING

112460014

FIT: REGULAR FIT

DESCRIPTION: FLEECE HOOD WITH LOGO EMBROIDERY

58% COTTON 42% POLYESTER

DARK CEDAR, BLACK

XS S M L XL XXL



BLACK

DARK CEDAR

D2 - SPECIALTY FLEECE



**HEADWEAR
ACCESSORIES**

VIRGIL BEANIE \$15 / \$30

200030116

FIT: CLASSIC FIT

DESCRIPTION: CLASSIC BEANIE IN SOLID COLORS WITH OBEY LABEL

100% ACRYLIC

SEAL ICE, BLACK, IRISH CREAM, LILAC CHALK

O/S



BLACK



SEAL ICE



IRISH CREAM



LILAC CHALK

D1 - HEADWEAR

YEJI EMBROIDERED BEANIE \$24 / \$48

200030118

FIT: CLASSIC FIT

DESCRIPTION: EMBROIDERED BEANIE

100% ACRYLIC

BLACK, LILAC CHALK

O/S



BLACK



LILAC CHALK

D1 - HEADWEAR

OBEY BOLD STRAP BACK HAT \$22.50 / \$45

200140145

FIT: CLASSIC FIT

DESCRIPTION: STRAP BACK HAT WITH OBEY BOLD LOGO EMBROIDERY

100% COTTON

BONE BROWN, BLACK

O/S



BONE BROWN



BLACK

D1 - HEADWEAR

VASE STRAPBACK HAT \$22.50 / \$45

200140146

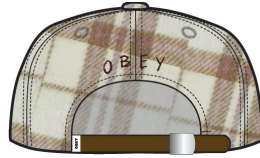
FIT: CLASSIC FIT

DESCRIPTION: STRAP BACK HAT WITH EMBROIDERIES

100% COTTON TWILL

CREAM MULTI, BROWN MULTI

O/S



BROWN MULTI

CREAM MULTI

D1 - HEADWEAR

LEOPARD REVERSIBLE BUCKET \$30 / \$60

200520016

FIT: CLASSIC FIT

DESCRIPTION: REVERSIBLE BUCKET HAT

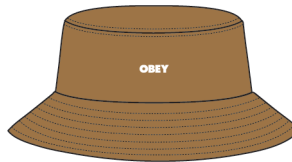
100% COTTON CANVAS * RIGHT SIDE - 100% COTTON TWILL * REVERSED SIDE

SOAP SIDE LEOPARD, BONE BROWN - PINK CLAY LEOPARD, BONE BROWN

O/S

*REVERSE SIDE

*REVERSE SIDE



SOAP SUDS LEOPARD - BONE BROWN

PINK CLAY LEOPARD - BONE BROWN

D1 - HEADWEAR

BILLIE BUCKET HAT \$30 / \$60

200520017

FIT: CLASSIC FIT

DESCRIPTION: EMBROIDERED BUCKET HAT

100% COTTON

DARK GREEN, IRISH CREAM

O/S



IRISH CREAM

DARK GREEN

D1 - HEADWEAR

COOP SOCK \$9 / \$18

200260070

DESCRIPTION: SOCK WITH CUSTOM OBEY JACQUARD STRIPES AND LOGO

85% COTTON 13% POLY 2% ELASTANE

WHITE / SWEET CORAL, WHITE / BLACK, WHITE / DIGITAL VIOLET

O/S



WHITE / SWEET CORAL



WHITE / BLACK



WHITE / DIGITAL VIOLET

D1 - ACCESSORIES

LEOPARD SOCKS \$9 / \$18

200260081

DESCRIPTION: LEOPARD SOCKS

85% COTTON 13% POLY 2% ELASTANE

PINK CLAY LEOPARD / WHITE, SOAP SUDS LEOPARD / WHITE

O/S



PINK CLAY LEOPARD / WHITE



SOAP SUDS LEOPARD / WHITE

D1 - ACCESSORIES

OBEY CANVAS TOTE BAG \$35 / \$70

200010194

CONTENT: 100% COTTON

BLACK / WHITE, NATURAL / WHITE

O/S



BLACK / WHITE



NATURAL / WHITE

D1 - BAGS

LEOPARD TOTE BAG \$35 / \$70

200010195

CONTENT: 100% COTTON

SOAP SUD MULTI, PINK CLAY MULTI

O/S



SOAP SUD MULTI



PINK CLAY MULTI

D1 - BAGS

OBEY BOLD WAISTPACK \$32.50 / \$65

200010196

DESCRIPTION: WAISTPACK WITH SCREEN PRINT

100% NYLON - WEBBING / LINING 100% POLYESTER

BLACK, BONE BROWN

O/S



BLACK



BONE BROWN

D1 - ACCESSORIES

BIG BOY WEB BELT \$15 / \$30

100050026

DESCRIPTION: ADJUSTABLE WEB BELT WITH SILVER HARDWARE AND A OBEY EYE LABEL

60% COTTON / 40% POLYESTER

BLACK, KHAKI, DIGITAL VIOLET

O/S



KHAKI



DIGITAL VIOLET

BLACK

D1 - ACCESSORIES

OBEY BOLD LOGO TRIFOLD WALLET \$22.50 / \$45

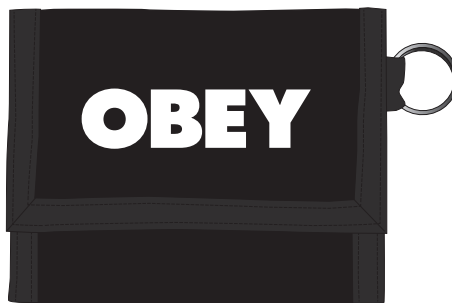
100310120

DESCRIPTION: TRI FOLD WALLET WITH MULTIPLE POCKETS, VELCRO CLOSURE AND OBEY EMBROIDERY

100% COTTON TWILL

BLACK, WHITE

O/S



WHITE

BLACK

D1 - ACCESSORIES

SORCERER GLOVES \$32.50 / \$65

100330009

DESCRIPTION: TOUCH CAPABILITY THUMB AND FOREFINGER GLOVES WITH SILICON GRIP PALMS AND PRINT

58% POLYESTER 36% NYLON 6% SPANDEX

BLACK

S/M, L/XL



BLACK

D1 - ACCESSORIES

OBEY ICON AIR FRESHENER \$8.50 / \$17

100680003

DESCRIPTION: PINE SCENT OBEY ICON FACE AIR FRESHENER

100% PAPER

BLACK MULTI

O/S

*PINE SCENT



BLACK MULTI

D1 - ACCESSORIES

OBEY ICON METAL KEYCHAIN \$15.50 / \$31

100160021

DESCRIPTION: METAL KEYCHAIN WITH ICON

100% METAL

WHITE

O/S



WHITE

D1 - ACCESSORIE

OBEY ICON DRINKING GLASS \$19 / \$38

100040000

DESCRIPTION: DRINKING GLASS WITH PRINT

100% GLASS

CLEAR

O/S



CLEAR

D1 - ACCESSORIES

OBEY ICON MUG \$22.50 / \$45

100630005

DESCRIPTION: PRINTED ICON MUG

100% CERAMIC

WHITE

O/S



WHITE

D1 - ACCESSORIES

DANCING DUCK MUG \$22.50 / \$45

100630006

DESCRIPTION: PRINTED ICON MUG

100% CERAMIC

WHITE

O/S



WHITE

D1 - ACCESSORIES

OBEY CHERUB AIR FRESHENER \$8.50 / \$17

100680008

DESCRIPTION: PINE SCENT OBEY ICON FACE AIR FRESHENER

100% PAPER

WHITE

O/S

*PINE SCENT



WHITE

D1 - ACCESSORIES

OBEY SHEEP AIR FRESHENER \$8.50 / \$17

100680009

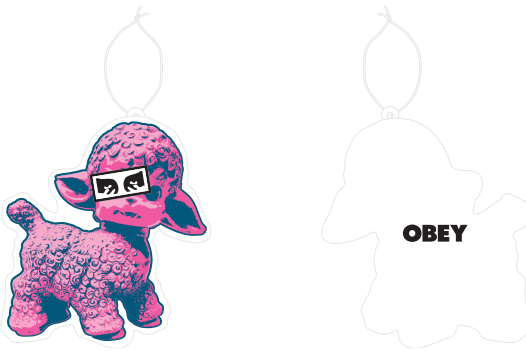
DESCRIPTION: PINE SCENT OBEY ICON FACE AIR FRESHENER

100% PAPER

WHITE

O/S

*PINE SCENT



WHITE

D1 - ACCESSORIES

DANCING DUCK HOTEL KEYCHAIN \$17.50 / \$35

100160024

DESCRIPTION: PLASTIC HOTEL KEY CHAIN WITH PRINT

100% PLASTIC

LIGHT BLUE MULTI

O/S



LIGHT BLUE MULTI

D1 - ACCESSORIES

OBEY CHERUB KEYCHAIN \$15 / \$30

100160025

DESCRIPTION: RUBBER KEYCHAIN WITH PRINT

100% RUBBER

WHITE

O/S



WHITE

D1 - ACCESSORIES

STICKER PACK 5 \$9 / \$15

100270012

DESCRIPTION: ASSORTED STICKERS FOR THE OBEY FIENDS. SPREAD IT! (STICKERS MAY VARY FROM CATALOG PHOTO)

ASSORTED

O/S



ASSORTED

D1 - ACCESSORIES

STICKER PACK 2 \$8.50 / \$17

100270001

DESCRIPTION: ASSORTED STICKERS FOR THE OBEY FIENDS. SPREAD IT! (STICKERS MAY VARY FROM CATALOG PHOTO)

ASSORTED

O/S



ASSORTED

D1 - ACCESSORIES

OBEY BOLD

326002349

DESCRIPTION: CORK BLOCK WITH BOLD OBEY PRINT

100% CORK

O/S

* THIS ITEM IS POP, AND INTENDED TO BE USED IN STORE DISPLAY. NOT FOR RESALE



CORK

D1 - POP

LARGE ICON FACE FRAMED PRINT

326000174

DESCRIPTION: FRAMED PRINT

ASSORTED

O/S

* THIS ITEM IS POP, AND INTENDED TO BE USED IN STORE DISPLAY. NOT FOR RESALE



ASSORTED

D1 - POP



PRINTABLES

OBEY BOLD 5 \$26 / \$52

263732246

DESCRIPTION: FITTED RIB TANK

CONTENT: 100% COTTON RIB

OLIVE OIL, IRISH CREAM

XS S M L XL



OLIVE OIL



IRISH CREAM

D1 - RIB MEGAN TANK

OBEY FLAMING CUPID 2 \$26 / \$52

263732247

DESCRIPTION: FITTED RIB TANK

CONTENT: 100% COTTON RIB

SEPIA, OLIVE OIL

XS S M L XL



SEPIA



OLIVE OIL

D1 - RIB MEGAN TANK

OBEY TAG \$28 / \$56

263751986

DESCRIPTION: CROPPED FITTED LONG SLEEVE TEE

CONTENT: 100% COTTON

SEPIA, BLACK, GOOD GREY

XS S M L XL



SEPIA



BLACK



GOOD GREY

D1 - CROPPED MIA LONG SLEEVE

OBEY BUBBLE \$28 / \$56

263752232

DESCRIPTION: CROPPED FITTED LONG SLEEVE TEE

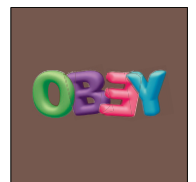
CONTENT: 100% COTTON

IRISH CREAM, SEPIA

XS S M L XL



IRISH CREAM



SEPIA

D1 - CROPPED MIA LONG SLEEVE

CMYK FLOWER \$28 / \$56

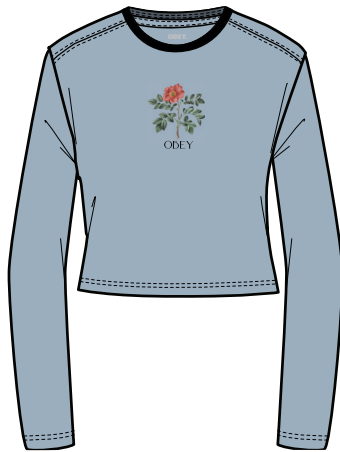
263752245

DESCRIPTION: CROPPED FITTED LONG SLEEVE TEE

CONTENT: 100% COTTON

GOOD GREY, IRISH CREAM

XS S M L XL



GOOD GREY



IRISH CREAM

D1 - CROPPED MIA LONG SLEEVE

OBEY HANGING ON 2 \$28 / \$56

263752244

DESCRIPTION: CROPPED FITTED LONG SLEEVE TEE

CONTENT: 100% COTTON

BLACK, SEPIA

XS S M L XL



BLACK



SEPIA

D1 - CROPPED MIA LONG SLEEVE

OBEY PEGASUS \$30 / \$60

267612216

DESCRIPTION: CUSTOM BOX LONG SLEEVE T-SHIRT

CONTENT: 100% COTTON

DIGITAL VIOLET, OFF BLACK

XS S M L XL

* PUFF INK

* PUFF INK



OFF BLACK

DIGITAL VIOLET

D1 - CUSTOM BOX LONG SLEEVE TEE

OBEY COVET \$30 / \$60

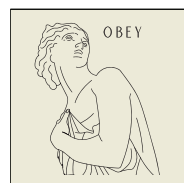
267612211

DESCRIPTION: CUSTOM BOX LONG SLEEVE T-SHIRT

CONTENT: 100% COTTON

JADE, UNBLEACHED

XS S M L XL



UNBLEACHED

JADE

D1 - CUSTOM BOX LONG SLEEVE TEE

OBEY ROUGHEN \$30 / \$60

263762234

DESCRIPTION: CROPPED JESS RIB FITTED LONG SLEEVE TEE WITH A LETTUCE EDGE

CONTENT: 100% COTTON RIB

ALGAE GREEN, FADED CITRUS

XS S M L XL



ALGAE GREEN



FADED CITRUS

D1 - CROPPED JESS RIB FITTED LONG SLEEVE TEE

DAISY SKETCH \$30 / \$60

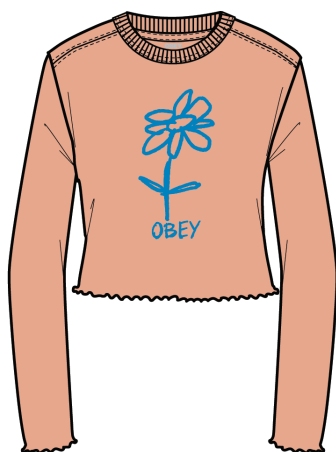
263762243

DESCRIPTION: CROPPED JESS RIB FITTED LONG SLEEVE TEE WITH A LETTUCE EDGE

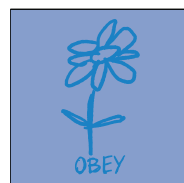
CONTENT: 100% COTTON RIB

FADED CITRUS, DIGITAL VIOLET

XS S M L XL



FADED CITRUS



DIGITAL VIOLET

D1 - CROPPED JESS RIB FITTED LONG SLEEVE TEE

OBEY DINO TYPE \$27.50 / \$55

263742241

DESCRIPTION: CROPPED RIB FITTED TEE WITH A LETTUCE EDGE

CONTENT: 100% COTTON

UNBLEACHED, FADED CITRUS, ALGAE GREEN

XS S M L XL



UNBLEACHED



FADED CITRUS



ALGAE GREEN

D1 - CROPPED EMMA FITTED TEE

MINI DOODLE FLOWER \$27.50 / \$55

263742240

DESCRIPTION: CROPPED RIB FITTED TEE WITH A LETTUCE EDGE

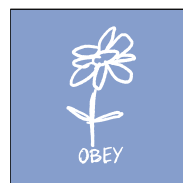
CONTENT: 100% COTTON

ALGAE GREEN, DIGITAL VIOLET

XS S M L XL



ALGAE GREEN



DIGITAL VIOLET

D1 - CROPPED EMMA FITTED TEE

OBEY VICIOUS DOG \$27.50 / \$55

263742218

DESCRIPTION: CROPPED RIB FITTED TEE WITH A LETTUCE EDGE

CONTENT: 100% COTTON

DIGITAL VIOLET, FADED CITRUS

XS S M L XL



DIGITAL VIOLET



FADED CITRUS

D1 - CROPPED EMMA FITTED TEE

OBEY REAPER CHAIN \$27.50 / \$55

263742242

DESCRIPTION: CROPPED RIB FITTED TEE WITH A LETTUCE EDGE

CONTENT: 100% COTTON

FADED CITRUS, DIGITAL VIOLET

XS S M L XL



FADED CITRUS



DIGITAL VIOLET

D1 - CROPPED EMMA FITTED TEE

OBEY TAG \$27.50 / \$55

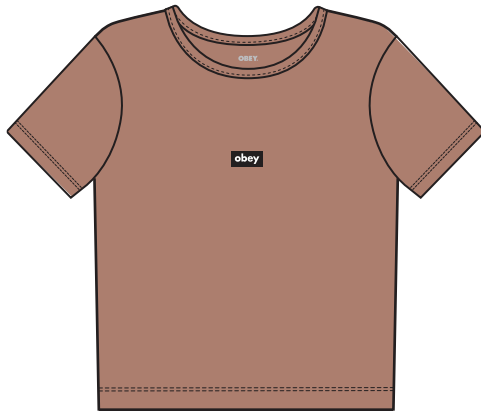
263781986

DESCRIPTION: CROPPED FITTED TEE

CONTENT: 100% COTTON

ITALIAN CLAY, GOOD GREY, IRISH CREAM

XS S M L XL



ITALIAN CLAY



GOOD GREY



IRISH CREAM

D1 - CROPPED CHLOE FITTED TEE

OBEY ROUGHEN \$27.50 / \$55

263782234

DESCRIPTION: CROPPED FITTED TEE

CONTENT: 100% COTTON

GOOD GREY, SEPIA

XS S M L XL



GOOD GREY



SEPIA

D1 - CROPPED CHLOE FITTED TEE

FLOWER POT \$27.50 / \$55

263782235

DESCRIPTION: CROPPED FITTED TEE

CONTENT: 100% COTTON

PINK CLAY, GOOD GREY

XS S M L XL



PINK CLAY



GOOD GREY

D1 - CROPPED CHLOE FITTED TEE

OBEY RIBBIT \$27.50 / \$55

263782236

DESCRIPTION: CROPPED FITTED TEE

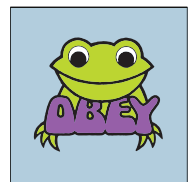
CONTENT: 100% COTTON

SEPIA, GOOD GREY

XS S M L XL



SEPIA



GOOD GREY

D1 - CROPPED CHLOE FITTED TEE

OBEY MINE! \$27.50 / \$55

263782237

DESCRIPTION: CROPPED FITTED TEE

CONTENT: 100% COTTON

LILAC CHALK, SEPIA

XS S M L XL



LILAC CHALK



SEPIA

D1 - CROPPED CHLOE FITTED TEE

LET THE LOVE IN \$27.50 / \$55

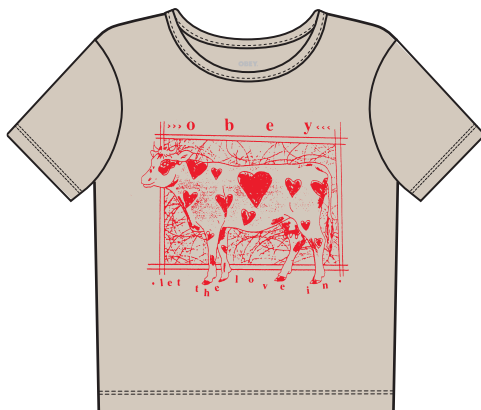
263782238

DESCRIPTION: CROPPED FITTED TEE

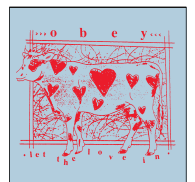
CONTENT: 100% COTTON

IRISH CREAM, GOOD GREY

XS S M L XL



IRISH CREAM



GOOD GREY

D1 - CROPPED CHLOE FITTED TEE

OBEY TAG \$27.50 / \$55

267621986

DESCRIPTION: HEAVYWEIGHT BOX FIT CROP T-SHIRT

CONTENT: 100% COTTON

JADE, DIGITAL VIOLET, UNBLEACHED

XS S M L XL



JADE



DIGITAL VIOLET



UNBLEACHED

D1 - CUSTOM CROP TEE

OBEY BUBBLE \$27.50 / \$55

267622232

DESCRIPTION: HEAVYWEIGHT BOX FIT CROP T-SHIRT

CONTENT: 100% COTTON

BROWN SUGAR, OFF BLACK

XS S M L XL



BROWN SUGAR



OFF BLACK

D1 - CUSTOM CROP TEE

OBEY DECO GIRL \$27.50 / \$55

267622233

DESCRIPTION: HEAVYWEIGHT BOX FIT CROP T-SHIRT

CONTENT: 100% COTTON

OFF BLACK, UNBLEACHED

XS S M L XL



OFF BLACK



UNBLEACHED

D1 - CUSTOM CROP TEE

OBEY MINI PUPPY \$27.50 / \$55

267622231

DESCRIPTION: HEAVYWEIGHT BOX FIT CROP T-SHIRT

CONTENT: 100% COTTON

DIGITAL VIOLET, LILAC CHALK, UNBLEACHED

XS S M L XL



DIGITAL VIOLET



LILAC CHALK



UNBLEACHED

D1 - CUSTOM CROP TEE

APOCALYPSE ENERGY \$27.50 / \$55

267622229

DESCRIPTION: HEAVYWEIGHT BOX FIT CROP T-SHIRT

CONTENT: 100% COTTON

UNBLEACHED, LILAC CHALK

XS S M L XL



LILAC CHALK

UNBLEACHED

D1 - CUSTOM CROP TEE

OBEY HANGING ON \$27.50 / \$55

267622230

DESCRIPTION: HEAVYWEIGHT BOX FIT CROP T-SHIRT

CONTENT: 100% COTTON

LILAC CHALK, OFF BLACK

XS S M L XL



OFF BLACK

LILAC CHALK

D1 - CUSTOM CROP TEE

OBEY EYES \$27.50 / \$55

264641874

DESCRIPTION: VINTAGE OVERSIZED BOX T-SHIRT

CONTENT: 100% COTTON

UNBLEACHED, JADE, LILAC CHALK

XS S M L XL



UNBLEACHED



JADE



LILAC CHALK

D1 - VINTAGE BOX TEE

RAINBOW CRAYON \$27.50 / \$55

264642219

DESCRIPTION: VINTAGE OVERSIZED BOX T-SHIRT

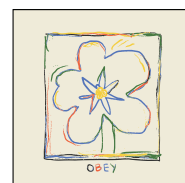
CONTENT: 100% COTTON

DIGITAL VIOLET, UNBLEACHED

XS S M L XL



DIGITAL VIOLET



UNBLEACHED

D1 - VINTAGE BOX TEE

LOVES GONNA GET YA \$27.50 / \$55

264642220

DESCRIPTION: VINTAGE OVERSIZED BOX T-SHIRT

CONTENT: 100% COTTON

BROWN SUGAR, OFF BLACK

XS S M L XL

* PUFF INK

* PUFF INK



OFF BLACK

BROWN SUGAR

D1 - VINTAGE BOX TEE

OBEY PEGASUS \$27.50 / \$55

264642216

DESCRIPTION: VINTAGE OVERSIZED BOX T-SHIRT

CONTENT: 100% COTTON

LILAC CHALK, OFF BLACK

XS S M L XL

* PUFF INK

* PUFF INK



OFF BLACK

LILAC CHALK

D1 - VINTAGE BOX TEE

CRACKED UP \$27.50 / \$55

264642221

DESCRIPTION: VINTAGE OVERSIZED BOX T-SHIRT

CONTENT: 100% COTTON

UNBLEACHED, BROWN SUGAR

XS S M L XL



BROWN SUGAR

UNBLEACHED

D1 - VINTAGE BOX TEE

OBEY CLUMSY PUP \$27.50 / \$55

264642222

DESCRIPTION: VINTAGE OVERSIZED BOX T-SHIRT

CONTENT: 100% COTTON

DIGITAL VIOLET, UNBLEACHED

XS S M L XL



UNBLEACHED

DIGITAL VIOLET

D1 - VINTAGE BOX TEE

STARS BEGIN FALLING \$27.50 / \$55

264642223

DESCRIPTION: VINTAGE OVERSIZED BOX T-SHIRT

CONTENT: 100% COTTON

DIGITAL VIOLET, OFF BLACK

XS S M L XL



OFF BLACK

DIGITAL VIOLET

D1 - VINTAGE BOX TEE

THE WORLDS A STAGE \$27.50 / \$55

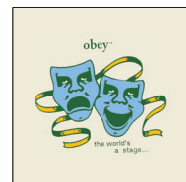
264642224

DESCRIPTION: VINTAGE OVERSIZED BOX T-SHIRT

CONTENT: 100% COTTON

BROWN SUGAR, UNBLEACHED

XS S M L XL



UNBLEACHED

BROWN SUGAR

D1 - VINTAGE BOX TEE

O BIRD \$26 / \$52

263452210

DESCRIPTION: PIGMENT DYED OVERSIZED BOX T-SHIRT

CONTENT: 100% COTTON

DIGITAL VIOLET, OFF BLACK, BOMBAY BROWN

XS S M L XL



DIGITAL VIOLET



OFF BLACK



BOMBAY BROWN

D1 - PIGMENT CHOICE BOX TEE

OBEY CHERUB THROWIE \$26 / \$52

263452209

DESCRIPTION: PIGMENT DYED OVERSIZED BOX T-SHIRT

CONTENT: 100% COTTON

OFF BLACK, DIGITAL VIOLET

XS S M L XL



OFF BLACK



DIGITAL VIOLET

D1 - PIGMENT CHOICE BOX TEE

FLOWER DANCE \$26 / \$52

263452212

DESCRIPTION: PIGMENT DYED OVERSIZED BOX T-SHIRT

CONTENT: 100% COTTON

JADE, ITALIAN CLAY

XS S M L XL



JADE



ITALIAN CLAY

D1 - PIGMENT CHOICE BOX TEE

OBEY COVET \$26 / \$52

263452211

DESCRIPTION: PIGMENT DYED OVERSIZED BOX T-SHIRT

CONTENT: 100% COTTON

BOMBAY BROWN, OFF BLACK

XS S M L XL



BOMBAY BROWN



OFF BLACK

D1 - PIGMENT CHOICE BOX TEE

DOODLE FLOWER \$26 / \$52

263452213

DESCRIPTION: PIGMENT DYED OVERSIZED BOX T-SHIRT

CONTENT: 100% COTTON

ITALIAN CLAY, DIGITAL VIOLET

XS S M L XL



ITALIAN CLAY



DIGITAL VIOLET

D1 - PIGMENT CHOICE BOX TEE

PEACE FOR OUR TIME \$26 / \$52

263452214

DESCRIPTION: PIGMENT DYED OVERSIZED BOX T-SHIRT

CONTENT: 100% COTTON

DIGITAL VIOLET, OFF BLACK

XS S M L XL



DIGITAL VIOLET



OFF BLACK

D1 - PIGMENT CHOICE BOX TEE

OBEY EYES \$32.50 / \$65

263491874

DESCRIPTION: TIE DYED PIGMENT DYED OVERSIZED BOX T-SHIRT

CONTENT: 100% COTTON

DIGITAL VIOLET BLEACH TIE DYE, BOMBAY BROWN BLEACH TIE DYE

XS S M L XL



BOMBAY BROWN BLEACH TIE DYE

DIGITAL VIOLET BLEACH TIE DYE

D1 - TIE DYE PIGMENT CHOICE BOX TEE

APOCALYPSE ENERGY \$32.50 / \$65

263492229

DESCRIPTION: TIE DYED PIGMENT DYED OVERSIZED BOX T-SHIRT

CONTENT: 100% COTTON

BOMBAY BROWN BLEACH TIE DYE, DIGITAL VIOLET BLEACH TIE DYE

XS S M L XL



DIGITAL VIOLET BLEACH TIE DYE

BOMBAY BROWN BLEACH TIE DYE

D1 - TIE DYE PIGMENT CHOICE BOX TEE

OBEY TAG \$47.50 / \$95

212811986

DESCRIPTION: OLD SCHOOL PULLOVER HOOD

CONTENT: 50% COTTON 50% POLYESTER

SAND, BLACK, INDIGO BLUE

S M L XL



SAND



BLACK



INDIGO BLUE

D1 - OLD SCHOOL PULLOVER HOOD

OBEY EYES \$47.50 / \$95

212811874

DESCRIPTION: OLD SCHOOL PULLOVER HOOD

CONTENT: 50% COTTON 50% POLYESTER

BLACK, INDIGO BLUE, SAND

S M L XL



BLACK



INDIGO BLUE



SAND

D1 - OLD SCHOOL PULLOVER HOOD

O BIRD \$47.50 / \$95

212812210

DESCRIPTION: OLD SCHOOL PULLOVER HOOD

CONTENT: 50% COTTON 50% POLYESTER

DARK CHOCOLATE, BLACK, SAND

S M L XL



DARK CHOCOLATE



BLACK



SAND

D1 - OLD SCHOOL PULLOVER HOOD

OBEY VICIOUS DOG \$47.50 / \$95

212812218

DESCRIPTION: OLD SCHOOL PULLOVER HOOD

CONTENT: 50% COTTON 50% POLYESTER

INDIGO BLUE, DARK CHOCOLATE

S M L XL



INDIGO BLUE



DARK CHOCOLATE

D1 - OLD SCHOOL PULLOVER HOOD

OBEY BUBBLE CHERUBS \$47.50 / \$95

212812225

DESCRIPTION: OLD SCHOOL PULLOVER HOOD

CONTENT: 50% COTTON 50% POLYESTER

BLACK, SAND

S M L XL



BLACK



SAND

D1 - OLD SCHOOL PULLOVER HOOD

LOVE GONNA GET YA \$47.50 / \$95

212812220

DESCRIPTION: OLD SCHOOL PULLOVER HOOD

CONTENT: 50% COTTON 50% POLYESTER

DARK CHOCOLATE, SAND

S M L XL



DARK CHOCOLATE



* PUFF INK

* PUFF INK



SAND

D1 - OLD SCHOOL PULLOVER HOOD

OBEY TAG \$40 / \$80

212791986

DESCRIPTION: OLD SCHOOL CREW NECK

CONTENT: 50% COTTON 50% POLYESTER

INDIGO BLUE, BLACK, SAND

S M L XL



INDIGO BLUE



BLACK



SAND

D1 - OLD SCHOOL CREW NECK

FINAL COVET \$40 / \$80

212792211

DESCRIPTION: OLD SCHOOL CREW NECK

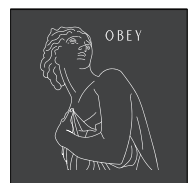
CONTENT: 50% COTTON 50% POLYESTER

MILITARY GREEN, BLACK

S M L XL



MILITARY GREEN



BLACK

D1 - OLD SCHOOL CREW NECK

OBEY PEGASUS \$40 / \$80

212792216

DESCRIPTION: OLD SCHOOL CREW NECK

CONTENT: 50% COTTON 50% POLYESTER

BLACK, SAND

S M L XL

* PUFF INK

* PUFF INK



SAND

BLACK

D1 - OLD SCHOOL CREW NECK

OBEY PUPPY \$40 / \$80

212792217

DESCRIPTION: OLD SCHOOL CREW NECK

CONTENT: 50% COTTON 50% POLYESTER

SAND, BLACK

S M L XL



BLACK

SAND

D1 - OLD SCHOOL CREW NECK

OBEY EYES \$52.50 / \$105

213711874

DESCRIPTION: OLD SCHOOL ZIP HOODIE

CONTENT: 50% COTTON 50% POLYESTER

DARK CHOCOLATE, BLACK, LIGHT PINK

S M L XL



BLACK



LIGHT PINK

DARK CHOCOLATE

D1 - OLD SCHOOL ZIP HOODIE

FLOWER CHALK DOODLE \$52.50 / \$105

213712227

DESCRIPTION: OLD SCHOOL ZIP HOODIE

CONTENT: 50% COTTON 50% POLYESTER

BLACK, DARK CHOCOLATE

S M L XL



DARK CHOCOLATE

BLACK

D1 - OLD SCHOOL ZIP HOODIE

OBEY ANGEL THIEF \$52.50 / \$105

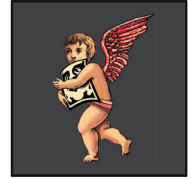
213712239

DESCRIPTION: OLD SCHOOL ZIP HOODIE

CONTENT: 50% COTTON 50% POLYESTER

LIGHT PINK, BLACK

S M L XL



BLACK

LIGHT PINK

D1 - OLD SCHOOL ZIP HOODIE

APOCALYPSE ENERGY \$52.50 / \$105

213712229

DESCRIPTION: OLD SCHOOL ZIP HOODIE

CONTENT: 50% COTTON 50% POLYESTER

DARK CHOCOLATE, BLACK

S M L XL



BLACK

DARK CHOCOLATE

D1 - OLD SCHOOL ZIP HOODIE