



CRTV / SCTY

*Collectively  
Created*

*Individually  
Expressed*

*Reg. No.  
3-528-874*

*EST. 2007*



SUMMER // 2019







LIRA is a lifestyle brand that has set out to assemble an institute that cultivates creativity. A culmination of efforts have led to the establishment of LIRA's  
CREATIVE SOCIETY

A community that influences their generation by sharing the expressive talents of athletes, artist, musicians, designers, and photographers.

LIRA's plan is to broaden the view of fashion in the action sports market by integrating the personality of the creative culture. LIRA's ability to consistently evolve with the collective consciousness of the consumer enables them to venture beyond the boundaries of traditional action sports apparel.

Rooted in Southern California, LIRA's designs unify a curated mix of expression from the surf, skate, and street culture. LIRA is about connecting, engaging, and celebrating with its creative collaborators; elevating the lifestyle they represent.

LIRA is Collectively Created, Individually Expressed.





**LS0900 SHAUNI TOP**

—  
LILAC  
XS - L | 95% POLYESTER 5% SPANDEX  
USA: w/s \$20 msrp \$40    CAN: w/s \$23 msrp \$46



**LS0901 SUMMER CHEEKY BOTTOM**

—  
LILAC  
XS - L | 95% POLYESTER 5% SPANDEX  
USA: w/s \$19 msrp \$38    CAN: w/s \$22.50 msrp \$45



**LS0902 SASHA ONE PIECE**

—  
LILAC  
XS - L | 95% POLYESTER 5% SPANDEX  
USA: w/s \$38 msrp \$76    CAN: w/s \$42.50 msrp \$85







**LS0900 SHAUNI TOP**

—  
BABY PINK  
XS - L | 95% POLYESTER 5% SPANDEX  
**USA:** w/s \$20 msrp \$40    **CAN:** w/s \$23 msrp \$46



**LS0901 SUMMER CHEEKY BOTTOM**

—  
BABY PINK  
XS - L | 95% POLYESTER 5% SPANDEX  
**USA:** w/s \$19 msrp \$38    **CAN:** w/s \$22.50 msrp \$45



**LS0902 SASHA ONE PIECE**

—  
BABY PINK  
XS - L | 95% POLYESTER 5% SPANDEX  
**USA:** w/s \$38 msrp \$76    **CAN:** w/s \$42.50 msrp \$85











**LS0904 DONNA TOP**

SKY

XS - L | 90% NYLON 10% SPANDEX RIB

**USA:** w/s \$20 msrp \$40    **CAN:** w/s \$23 msrp \$46



**LS0905 JENNA BOTTOM**

SKY

XS - L | 90% NYLON 10% SPANDEX RIB

**USA:** w/s \$19 msrp \$38    **CAN:** w/s \$22.50 msrp \$45



**LS0906 LANI ONE PIECE**

SKY

XS - L | 90% NYLON 10% SPANDEX RIB

**USA:** w/s \$34 msrp \$68    **CAN:** w/s \$40 msrp \$80







**LS0904 DONNA TOP**

—  
CORAL  
XS - L | 90% NYLON 10% SPANDEX RIB  
**USA:** w/s \$20 msrp \$40    **CAN:** w/s \$23 msrp \$46



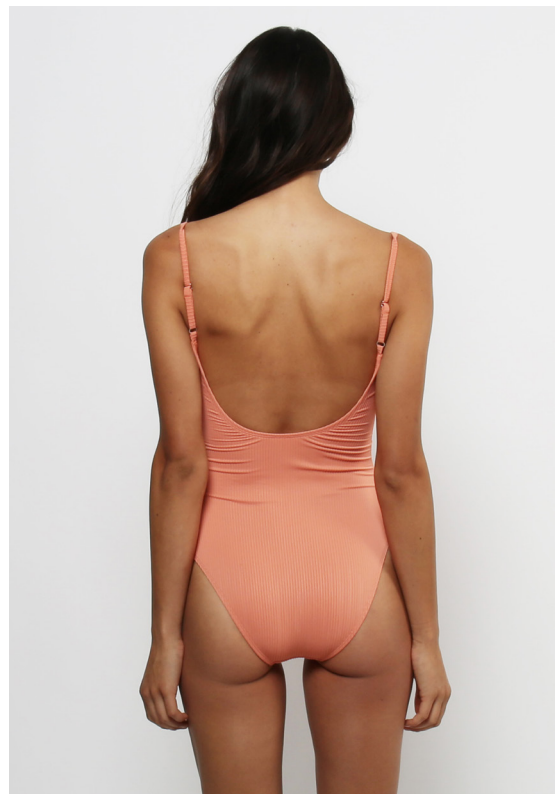
**LS0905 JENNA BOTTOM**

—  
CORAL  
XS - L | 90% NYLON 10% SPANDEX RIB  
**USA:** w/s \$19 msrp \$38    **CAN:** w/s \$22.50 msrp \$45



**LS0906 LANI ONE PIECE**

—  
CORAL  
XS - L | 90% NYLON 10% SPANDEX RIB  
**USA:** w/s \$34 msrp \$68    **CAN:** w/s \$40 msrp \$80















**LS1002 MENTON TOP**

RED OCHRE  
XS - L | 82% POLYESTER 18% SPANDEX  
USA: w/s \$20 msrp \$40    CAN: w/s \$23 msrp \$46



**LS1004 SANREMO REVERSIBLE CHEEKY BOTTOM**

RED OCHRE  
XS - L | 82% POLYESTER 18% SPANDEX  
USA: w/s \$19 msrp \$38    CAN: w/s \$22.50 msrp \$45



**LS1001 YVETTE REVERSIBLE TOP**

RED OCHRE  
XS - L | 82% POLYESTER 18% SPANDEX  
USA: w/s \$21 msrp \$42    CAN: w/s \$25 msrp \$50



**LS1003 IMPERIA REVERSIBLE FULL BOTTOM**

RED OCHRE  
XS - L | 82% POLYESTER 18% SPANDEX  
USA: w/s \$20 msrp \$40    CAN: w/s \$23 msrp \$46



#### LS1002 MENTON TOP

BLUE  
XS - L | 82% POLYESTER 18% SPANDEX  
USA: w/s \$20 msrp \$40    CAN: w/s \$23 msrp \$46



#### LS1004 SANREMO REVERSIBLE CHEEKY BOTTOM

BLUE  
XS - L | 82% POLYESTER 18% SPANDEX  
USA: w/s \$19 msrp \$38    CAN: w/s \$22.50 msrp \$45



#### LS1001 YVETTE REVERSIBLE TOP

BLUE  
XS - L | 82% POLYESTER 18% SPANDEX  
USA: w/s \$21 msrp \$42    CAN: w/s \$25 msrp \$50



#### LS1003 IMPERIA REVERSIBLE FULL BOTTOM

BLUE  
XS - L | 82% POLYESTER 18% SPANDEX  
USA: w/s \$20 msrp \$40    CAN: w/s \$23 msrp \$46













**LS1005 TROPEZ REVERSIBLE ONE PIECE**

RED OCHRE

XS - L | 82% POLYESTER 18% SPANDEX

USA: w/s \$35 msrp \$70

CAN: w/s \$40 msrp \$80



**LS1005 TROPEZ REVERSIBLE ONE PIECE**

BLUE

XS - L | 82% POLYESTER 18% SPANDEX

USA: w/s \$35 msrp \$70

CAN: w/s \$40 msrp \$80





#### LS1006 MIRAMAR REVERSIBLE TOP

BLACK

XS - L | 82% POLYESTER 18% SPANDEX

USA: w/s \$21 msrp \$42 CAN: w/s \$25 msrp \$50



#### LS1009 BORA REVERSIBLE CHEEKY BOTTOM

BLACK

XS - L | 82% POLYESTER 18% SPANDEX

USA: w/s \$19 msrp \$38 CAN: w/s \$22.50 msrp \$45



#### LS1007 BELLS REVERSIBLE TOP

BLACK

XS - L | 82% POLYESTER 18% SPANDEX

USA: w/s \$20 msrp \$40 CAN: w/s \$23 msrp \$46



#### LS1008 NOSARA REVERSIBLE MID BOTTOM

BLACK

XS - L | 82% POLYESTER 18% SPANDEX

USA: w/s \$20 msrp \$40 CAN: w/s \$23 msrp \$46













**LS1006 MIRAMAR REVERSIBLE TOP**

SKY

XS - L | 82% POLYESTER 18% SPANDEX

**USA:** w/s \$21 msrp \$42 **CAN:** w/s \$25 msrp \$50



**LS1009 BORA REVERSIBLE CHEEKY BOTTOM**

SKY

XS - L | 82% POLYESTER 18% SPANDEX

**USA:** w/s \$19 msrp \$38 **CAN:** w/s \$22.50 msrp \$45



**LS1007 BELLS REVERSIBLE TOP**

SKY

XS - L | 82% POLYESTER 18% SPANDEX

**USA:** w/s \$20 msrp \$40 **CAN:** w/s \$23 msrp \$46



**LS1008 NOSARA REVERSIBLE MID BOTTOM**

SKY

XS - L | 82% POLYESTER 18% SPANDEX

**USA:** w/s \$20 msrp \$40 **CAN:** w/s \$23 msrp \$46





**LS1010 RHODES REVERSIBLE ONE PIECE**

SKY

XS - L | 82% POLYESTER 18% SPANDEX

**USA:** w/s \$39 msrp \$78 **CAN:** w/s \$45 msrp \$90



**LS1010 RHODES REVERSIBLE ONE PIECE**

BLACK

XS - L | 82% POLYESTER 18% SPANDEX

**USA:** w/s \$39 msrp \$78 **CAN:** w/s \$45 msrp \$90







**JC3402 YASMINE COVERUP**

BLACK PALMS | IVORY  
OSFA | 100% VISCOSE

**USA:** w/s \$28 msrp \$56      **CAN:** w/s \$32.50 msrp \$65

**JC3401 ERIKA COVERUP**

BLACK | IVORY  
XS/S, M/L | 100% POLYESTER

**USA:** w/s \$22 msrp \$44      **CAN:** w/s \$25 msrp \$50







## SALES CONTACTS

**LIRA CLOTHING**  
1169 N. KNOLLWOOD CIR.  
ANAHEIM, CA 92801  
O. 714-676-8624

BRIAN BARLOW  
NATIONAL SALES MGR  
D. 562.889.2717  
barlow@liraclothing.com

AMELIA RENAUD  
CALIFORNIA & NEVADA  
C. 714.931.5896  
amelia.n.renaud@gmail.com

EVA HUME  
PACIFIC NORTHWEST  
C. 303.886.7791  
eva@whitefangsales.com

TYTUS FRIAR  
ROCKIES  
C. 303.884.0368  
tytusfriar@mac.com

LAUREN BERTOLINO  
NORTH EAST & TRI STATE  
C. 917.226.8763  
lauren@soloshowroom.com

RYAN LANGHORNE  
SOUTHEAST & S. MID ATLANTIC  
C. 321.795.5892  
r.langhorne1@gmail.com

KRISTEN GEISSINGER  
MID WEST  
C. 402-637-3114  
kristen@soloshowroom.com

JENNIFER SHERIDAN  
HAWAII  
C. 808.780.5764  
jennifresheridan@gmail.com

## INTERNATIONAL

**LIRA CANADA INC.**  
1443 RUE BEGIN,  
SAINT-LAURENT QC H4R 1V8  
CANADA (LIRA)  
O. 877-507-5472

MARC-A. SAUCIER  
CANADIAN SALES MGR  
O. 877.507-5472  
marc@liraclothing.com

JON H. GENIER  
QUEBEC & MARITIME  
C. 450.542.0396  
jonh@agencejg.com

J.S. Weir  
WESTERN CANADA  
C. 778.320.9347  
js@waydangerous.com



COLLECTIVELY CREATED. INDIVIDUALLY EXPRESSED. USA // REGISTRATION REG. NO. 3-528-874. LIRA MFG CO.

www.liraclothing.com

@lirawomens