



CRTV | SCTY

Collectively  
Created

Individually  
Expressed

Reg. No.  
3-528-874

EST. 2007



Fall 2020





**OUTLAWS**  
**IN CONCERT**  
**ONE NIGHT ONLY**  
WILLIE, WAYLON AND JOHNNY  
*under the desert sky*  
show starts at 7:00PM  
**HELP** your  
brothers and sisters  
BRING CANNED FOOD DONATION FOR POOR  
MAR. 16, 1972  
**Joshua Tree, CA**

# ***THE CREATIVE SOCIETY***

---

**The Creative Society is a community  
that influences generations by  
sharing the expressive talents of athletes  
artists, musicians, designers  
and photographers.**

**Our ability to consistently evolve enables  
us to venture beyond the boundaries  
of traditional design.**

**We strive to broaden the view of fashion  
by integrating the personality of our  
creative culture, endlessly pursuing  
what we believe;  
Collectively Created  
Individually Expressed.**

**@lirawomens**

**[www.liraclothing.com](http://www.liraclothing.com)**



**LIRA MFG.  
COMPANY  
REG. NO. 3-528-874**

**COLLECTIVELY CREATED  
INDIVIDUALLY EXPRESSED  
CRTV // SCTY**



# DELIVERY //







JULY 1 // 2020

One









#### JC4044 CALIFORNIA DRIFTER TEE

BOYFRIEND FIT GRAPHIC TEE

VINTAGE BLACK

XS - L | 100% COTTON

USA: w/s \$14 msrp \$28 CAN: w/s \$17.50 msrp \$35



#### JC4012 NIKI DRESS

FITTED DENIM DRESS WITH ADJUSTABLE SHOULDER STRAPS

BLACK | VINTAGE BLUE

XS - L | 98% COTTON 2% ELASTANE

USA: w/s \$31 msrp \$62 CAN: w/s \$40 msrp \$80



#### JC4041 SO HIGH PANT

HIGH RISE WIDER WAIL CORDUROY PANTS WITH CARGO FRONT POCKETS  
INSEAM: 27" RISE: 11.5"

SIENNA | MIDNIGHT

25 - 31 | 98% COTTON 2% SPANDEX

USA: w/s \$32 msrp \$64 CAN: w/s \$40 msrp \$80





#### JC4036 JALAMA SWEATER

NOTCH NECK CROPPED PULLOVER SWEATER WITH FIXED CUFF SLEEVES

IVORY | OLIVE

XS - L | 100% COTTON

USA: w/s \$32 msrp \$64

CAN: w/s \$40 msrp \$80



#### JC4051 BONNIE SHIRT

IN ALL OVER FLORAL PRINT WITH COLLAR AND FRONT CHEST POCKET

BLACK | DANDELION

XS - L | 100% RAYON

USA: w/s \$24 msrp \$48

CAN: w/s \$30 msrp \$60



#### JC4014 KATE DRESS

WITH BUTTON DETAIL AT CHEST, ADJUSTABLE STRAPS, RUFFLE HEM, SIDE POCKETS AND TONAL STRIPE

SIENNA | OLIVE

XS - L | 52% VISCOSE 48% RAYON

USA: w/s \$26 msrp \$52

CAN: w/s \$30 msrp \$60



#### JC4021 MAIDEN SKIRT

IN ALL OVER FLORAL PRINT WITH RUFFLE HEM AND HIDDEN SIDE ZIPPER

DANDELION | BLACK

XS - L | 100% RAYON

USA: w/s \$19 msrp \$38

CAN: w/s \$22.50 msrp \$45











**JC4017 OLIVIA DRESS**

IN ALL OVER FLORAL PRINT WITH SWEETHEART NECKLINE, SHOULDER STRAPS WITH HIDDEN ADJUSTABLE BUTTONS, SIDE ZIPPER AND RUCHED BACK

DANDELION | BLACK

XS - L | 100% RAYON

USA: w/s \$29 msrp \$58

CAN: w/s \$35 msrp \$70

**JC4028 NO WORRIES SWEATER**

LIGHTWEIGHT SWEATER WITH CHEST EMBROIDERY AND RIBBED TRIM

IVORY | MIDNIGHT

XS - L | 70% VISCOSE 30% NYLON

USA: w/s \$26 msrp \$52

CAN: w/s \$30 msrp \$60

**JC4037 JESSIE PLAYSUIT**

WITH V NECK, SIDE POCKETS AND CROPPED FIT  
INSEAM: 26"

VINTAGE OLIVE | BLACK

XS - L | 80% MODAL 20% POLYESTER

USA: w/s \$30 msrp \$60

CAN: w/s \$37.50 msrp \$75

**JC4016 JENNA SKIRT**

WITH FUNCTIONAL TIE AND HIDDEN SNAP

BERRY | BLACK

XS - L | 65% POLYESTER 32% RAYON 3% SPANDEX

USA: w/s \$24 msrp \$48

CAN: w/s \$30 msrp \$60



# DELIVERY //







AUGUST 1 // 2020

Twa









#### JC4039 STACIE DRESS

MIDI WRAP DRESS IN A PRINTED CRINKLE GAUZE

BLACK | BRICK

XS - L | 100% RAYON

USA: w/s \$32 msrp \$64

CAN: w/s \$40 msrp \$80



#### JC4011 COMMANDO JACKET

LIGHTWEIGHT JACKET WITH FLOWER EMBROIDERY, EXPOSED BUTTON DOWN PLACKET AND BUST POCKETS

VINTAGE OLIVE

XS - L | 100% COTTON

USA: w/s \$34 msrp \$68

CAN: w/s \$40 msrp \$80



#### JC4008 RYLEE JUMPSUIT

WITH FUNCTIONAL BUTTON-FRONT CLOSURE AND RUCHED SHOULDER STRAPS IN A PRINTED CRINKLE GAUZE  
INSEAM: 29"

BLACK | BRICK

XS - L | 100% RAYON

USA: w/s \$32 msrp \$64

CAN: w/s \$40 msrp \$80



#### JC4033 NOA DRESS

FITTED RIBBED KNIT DRESS WITH ADJUSTABLE STRAPS AT SHOULDERS

BERRY | BLACK

XS - L | 63% POLYESTER 30% COTTON 7% ELASTANE

USA: w/s \$26 msrp \$52 CAN: w/s \$30 msrp \$60



#### JC4010 FAITH PLAYSUIT

V NECK WITH FITTED BODICE, SHORT SLEEVES, ALL OVER FLORAL PRINT AND BACK ZIPPER  
INSEAM: 27"

BLACK

XS - L | 100% VISCOSE

USA: w/s \$32 msrp \$64 CAN: w/s \$40 msrp \$80



#### JC4000 SOPHIE TANK

WITH RUFFLE AT HEM IN STRETCH SWEATER RIB

DANDELION | BERRY | CAMEL

XS - L | 70% VISCOSE 30% NYLON

USA: w/s \$19 msrp \$38 CAN: w/s \$22.50 msrp \$45













#### JC4048 KOOKS LS TEE

GRAPHIC LS CROPPED TEE WITH RIB ON NECK AND SLEEVES

IVORY | BLUSH

XS - L | 100% COTTON

USA: w/s \$15 msrp \$30

CAN: w/s \$20 msrp \$40



#### JC4045 ANNABELLE SWEATER

WITH CONTRAST KNIT AT BACK, RIB AT SLEEVES, NECK AND HEM

BONE | SIENNA

XS - L | 100% COTTON

USA: w/s \$32 msrp \$64

CAN: w/s \$40 msrp \$80



#### JC4009 WESTIE SKIRT

HIGH WAISTED DENIM MINI SKIRT WITH BUTTON CLOSURE AND ZIP FLY

VINTAGE BLUE | BLACK

XS - L | 98% COTTON 2% ELASTANE

USA: w/s \$25 msrp \$50

CAN: w/s \$30 msrp \$60



#### JC4032 SOLSTICE DRESS

LONG SLEEVE MINI DRESS WITH WRAP DETAIL AT WAIST AND FITTED SLEEVE IN ALL OVER STRIPE

BLACK

XS - L | 100% VISCOSE

USA: w/s \$29 msrp \$58

CAN: w/s \$35 msrp \$70





#### JC4005 JANE CARDIGAN

CHUNKY OPEN CARDIGAN WITH FUN STRIPE PATTERN

MULTI

XS - L | 100% COTTON

USA: w/s \$34 msrp \$68

CAN: w/s \$40 msrp \$80



#### JC4022 SADIE TOP

CRINKLE GAUZE TOP WITH COLLAR AND BANDED WAISTBAND

IVORY | VINTAGE BLACK

XS - L | 100% COTTON

USA: w/s \$19 msrp \$38

CAN: w/s \$22.50 msrp \$45



#### JC4013 MOLLY DRESS

WITH FUNCTIONAL TIE AT WAIST, RUFFLE HEM AND BUTTON DETAIL AT SLEEVES

BLACK

XS - L | 100% VISCOSE

USA: w/s \$27 msrp \$54

CAN: w/s \$32.50 msrp \$65













#### JC4034 BLOCKED SWEATER

FASHION SWEATER WITH V DETAIL ON BACK

CITRON | CAMEL

XS - L | 67% ACRYLIC 30% POLYAMIDE 3% SPANDEX

**USA:** w/s \$28 msrp \$56 **CAN:** w/s \$32.50 msrp \$65



#### JC4053 PARKER JACKET

WITH BUTTON CLOSURE, CONTRAST TWILL TRIM AND FRONT PATCH POCKETS

VINTAGE SAGE | VINTAGE SIENNA

XS - L | 100% COTTON

**USA:** w/s \$45 msrp \$90 **CAN:** w/s \$55 msrp \$110



#### JC4040 AUBREY DENIM

CROPPED HIGH WAISTED DENIM WITH BUTTON FLY AND FIVE POCKET DESIGN  
INSEAM: 26" RISE: 11"

VINTAGE BLUE

25 - 31 | 98% COTTON 2% ELASTANE

**USA:** w/s \$32 msrp \$64 **CAN:** w/s \$40 msrp \$80



# DELIVERY //







SEPTEMBER 1 // 2020

Three









**JC4047 STAY WILD SWEATSHIRT**  
WITH CHEST EMBROIDERY

VINTAGE BLACK

XS - L | 100% COTTON

USA: w/s \$26 msrp \$52

CAN: w/s \$30 msrp \$60



**JC4046 CRUSH TOP**

FITTED TOP WITH SWEETHEART NECKLINE, REMOVABLE BUST CUPS AND SMOCKED BACK BODICE

IVORY | BLACK

XS - L | 100% VISCOSE

USA: w/s \$21 msrp \$42

CAN: w/s \$25 msrp \$50



**JC4026 RICKIE FLEECE JOGGER**

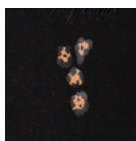
WITH GRAPHIC HIT ON LEG, DRAWSTRING AND ELASTIC AT WAISTBAND AND LEG OPENING

VINTAGE BLACK

XS - L | 100% COTTON

USA: w/s \$24 msrp \$48

CAN: w/s \$30 msrp \$60



**JC4030 LOVER DRESS**

MIDI LENGTH DRESS WITH A SWEETHEART NECKLINE, WIDE SHOULDER STRAPS WITH HIDDEN ADJUSTABLE BUTTONS, A RUCHED BACK BODICE, FRONT BUTTON DETAILING AND RUFFLE HEM

BLACK

XS - L | 100% VISCOSE

USA: w/s \$29 msrp \$58

CAN: w/s \$35 msrp \$70





#### JC4052 OUTLAWS TEE

BOYFRIEND FIT GRAPHIC TEE

VINTAGE BLACK

XS - L | 100% COTTON

USA: w/s \$14 msrp \$28

CAN: w/s \$17.50 msrp \$35



#### JC4020 ALL NIGHTER VEGAN LEATHER JACKET

WITH STUD DETAILS AT THE COLLAR, ZIPPER FRONT, SIDE HEM POCKETS AND ZIPPER SLEEVE DETAILS

BLACK

XS - L | 100% PU

USA: w/s \$45 msrp \$90

CAN: w/s \$55 msrp \$110



#### JC4023 NINA SKIRT

MIDI SKIRT WITH ELASTIC WAISTBAND

CHEETAH | VINTAGE OLIVE

XS - L | 100% VISCOSE

USA: w/s \$21 msrp \$42

CAN: w/s \$25 msrp \$50



#### JC4031 ALL DAY DRESS

KNIT BODY CON WITH MOCK NECK

BLACK | ROSE

XS - L | 95% COTTON 5% ELASTANE

USA: w/s \$26 msrp \$52

CAN: w/s \$30 msrp \$60













#### JC4027 LOLA DRESS

WITH V NECK NECKLINE AND ELASTICED SLEEVES

CHEETAH | VINTAGE OLIVE

XS - L | 100% VISCOSE

USA: w/s \$27 msrp \$54      CAN: w/s \$32.50 msrp \$65



#### JC4025 HIDE OUT SWEATER

CHUNKY RIBBED PULLOVER SWEATER WITH MOCK NECK IN A SLOUCHY FIT

BLACK | SAND

XS - L | 100% COTTON

USA: w/s \$30 msrp \$60      CAN: w/s \$37.50 msrp \$75



#### JC4004 NOVA PANT

HIGH RISE PANTS WITH REMOVABLE BELT AND BACK PATCH POCKETS

INSEAM: 29" RISE: 11"

BLACK | VINTAGE OLIVE

25 - 31 | 98% COTTON 2% SPANDEX

USA: w/s \$31 msrp \$62      CAN: w/s \$40 msrp \$80





#### JC4050 KOOKS HOODIE

WITH CHEST HIT AND BACK GRAPHIC

BLUSH | BLACK  
XS - L | 100% COTTON

**USA:** w/s \$27 msrp \$54 **CAN:** w/s \$32.50 msrp \$65



#### JC4035 BECKY CARDIGAN

WITH V NECK NECKLINE, BUTTON FRONT CLOSURE, RIBBED TRIM AND RAW EDGE HEM

BLACK  
XS - L | 74% ACRYLIC 23% POLYAMIDE 3% SPANDEX

**USA:** w/s \$28 msrp \$56 **CAN:** w/s \$32.50 msrp \$65



#### JC4024 WILDER SHORT

WITH SIDE ZIPPER AND ELASTIC AT BACK

CHEETAH | VINTAGE OLIVE  
XS - L | 100% VISCOSE

**USA:** w/s \$23 msrp \$46 **CAN:** w/s \$27.50 msrp \$55









x Hilary Shanks



# HILARY SHANKS

This season we are excited to launch our *#createyourlife* collab series. We are partnering with inspiring young women who are creating life on their own terms. Hilary Shanks seemed like a perfect fit for our first collab. She has over 100k followers on social media, inspires many young girls in the skate world and doesn't let people put her in a box.









x Hilary Shanks





### JC4043 STATE FAIR TEE

CROPPED BOYFRIEND FIT GRAPHIC TEE

VINTAGE OLIVE

XS - L | 100% COTTON

USA: w/s \$14 msrp \$28

CAN: w/s \$17.50 msrp \$35



### JC4049 DOUBLE HEARTS TEE

CROPPED BOYFRIEND FIT GRAPHIC TEE

VINTAGE BLACK

XS - L | 100% COTTON

USA: w/s \$14 msrp \$28

CAN: w/s \$17.50 msrp \$35



### JC4019 RIDE TOP

CROPPED RIBBED TOP WITH MOCKNECK

IVORY | BERRY

XS - L | 70% VISCOSE 30% NYLON

USA: w/s \$19 msrp \$38

CAN: w/s \$22.50 msrp \$45



### JC4042 SPRINGFIELD PANT

HIGH WAISTED CROPPED PLAID PANT FITTED THROUGH THIGH WITH BACK POCKETS  
INSEAM: 27" RISE: 11"

MULTI

XS - L | 55% POLYESTER 42% RAYON 3% SPANDEX

USA: w/s \$30 msrp \$60

CAN: w/s \$37.50 msrp \$75





x Hilary Shanks





**JC4001 JAMES JACKET**

CROPPED DENIM JACKET WITH EMBROIDERY AND FRONT PATCH POCKETS

VINTAGE BLUE | BLACK

XS - L | 100% COTTON

USA: w/s \$45 msrp \$90

CAN: w/s \$55 msrp \$110

**JC4018 SHANKS SWEATSHIRT**

MADE ON THE REVERSE WITH EMBROIDERY DETAIL AT CHEST

VINTAGE OLIVE

XS - L | 100% COTTON

USA: w/s \$29 msrp \$58

CAN: w/s \$35 msrp \$70

**JC4014 KATE DRESS**

WITH BUTTON DETAIL AT CHEST, ADJUSTABLE STRAPS, RUFFLE HEM, SIDE POCKETS AND TONAL STRIPE

ROSE

XS - L | 52% VISCOSE 48% RAYON

USA: w/s \$26 msrp \$52

CAN: w/s \$30 msrp \$60

**JC4040 AUBREY DENIM**

CROPPED HIGH WAISTED DENIM WITH BUTTON FLY AND FIVE POCKET DESIGN

INSEAM: 26" RISE: 11"

BLACK

25 - 31 | 98% COTTON 2% ELASTANE

USA: w/s \$32 msrp \$64

CAN: w/s \$40 msrp \$80



#### SALES CONTACTS

**LIRA CLOTHING**  
**1169 N. KNOLLWOOD CIR.**  
**ANAHEIM, CA 92801**  
**O. 714-676-8624**

SEAN HARRIS  
NATIONAL SALES MANAGER  
C. 949.929.8270  
sean@liraclothing.com

AMELIA RENAUD  
SOUTHWEST  
C. 714.931.5896  
amelia.n.renaud@gmail.com

EVA HUME  
PACIFIC NORTHWEST  
C. 303.886.7791  
eva@whitfangsales.com

TYTUS FRIAR  
ROCKIES  
C. 303.884.0368  
tytusfriar@mac.com

LAUREN BERTOLINO  
NORTHEAST & TRI STATE  
C. 917.226.8763  
lauren@soloshowroom.com

MORGANN LEIDIGH  
SOUTHEAST  
C. 904.229.9496  
morgann@shopskyeshowroom.com

NICOLE ORSARGOS  
MID ATLANTIC  
C. 757.270.0033  
snicoleo@me.com

#### INTERNATIONAL

**LIRA CANADA INC.**  
**1443 RUE BEGIN,**  
**SAINT-LAURENT QC H4R 1V8**  
**CANADA**  
**O. 877-507-5472**

MARC A. SAUCIER  
CANADIAN SALES MGR  
O. 877.507.5472  
marc@liraclothing.com

JON H. GENIER  
QUEBEC & MARITIME  
C. 450.542.0396  
jonh@agencejg.com

J.S. WEIR  
WESTERN CANADA  
C. 778.320.9347  
js@waydangerous.com

