

WOMEN'S

COLLECTION



OBÉY

HOLIDAY

2016

THE OBEY CAMPAIGN CAN BE EXPLAINED AS AN EXPERIMENT IN PHENOMENOLOGY. THE FIRST AIM OF PHENOMENOLOGY IS TO REAWAKEN A SENSE OF WONDER ABOUT ONE'S ENVIRONMENT. THE OBEY CAMPAIGN ATTEMPTS TO STIMULATE CURIOSITY AND BRING PEOPLE TO QUESTION BOTH THE CAMPAIGN AND THEIR RELATIONSHIP WITH THEIR SURROUNDINGS. BECAUSE PEOPLE ARE NOT USED TO SEEING ADVERTISEMENTS OR PROPAGANDA FOR WHICH THE MOTIVE IS NOT OBVIOUS, FREQUENT AND NOVEL ENCOUNTERS WITH OBEY PROPAGANDA PROVOKE THOUGHT AND POSSIBLE FRUSTRATION, NEVERTHELESS REVITALIZING THE VIEWER'S PERCEPTION AND ATTENTION TO DETAIL. TO CATALYZE A THOUGHTFUL DIALOGUE DECONSTRUCTING THE PROCESS OF IMAGE ABSORPTION IS THE ULTIMATE GOAL. ALL IN THE NAME OF FUN AND OBSERVATION.

THE MEDIUM IS THE MESSAGE.



SALES REPRESENTATIVES

PACIFIC NORTHWEST
BURL DARDEN
64171 TUMALO RIM DRIVE
BEND, OR 97701
P: 541.385.3302 / F: 541.385.3302
E: BURL@OBEYCLOTHING.COM

LOS ANGELES
TOMMY LOVE
17462 VON KARMAN AVE.
IRVINE, CA 92614
C: 714.658.3946 / F: 714.556.2793
E: TOMMY@OBEYCLOTHING.COM

ORANGE COUNTY / SAN DIEGO
MARK MAZZA
20091 SHOREWOOD CIRCLE
HUNTINGTON BEACH, CA 92649
C: 714.614.7901 / F: 714.964.3676
E: MDMSALES@ME.COM

HAWAII / GUAM
NOEL MARCHAN
98-750 MOANALUA LOOP
AIEA, HI 96701
P: 808.676.5290
E: NMARCHAN@AOL.COM

NOR CAL, NEVADA,
ARIZONA, NEW MEXICO
JENNIFER L. ZWEIG
8161 SKYLINE BLVD.
OAKLAND, CA 94611
C: 510.388.4418
E: JLZ@OBEYCLOTHING.COM

MIDWEST
LAURA KARELS
13816 SHIRLEY DR.
BURNSVILLE, MN 55337
P: 952.461.4218 / F: 952.461.4219
E: LAURA_KARELS@YAHOO.COM

NORTHEAST / MID ATLANTIC
NICK LHOTSKY
17462 VON KARMAN AVE.
IRVINE, CA 92614
C: 443.373.3283 / P: 949.596.8400 X263
E: NICK@OBEYCLOTHING.COM

SOUTHEAST
ANDREW MERCIER
10777 BISHOPVILLE RD.
BISHOPVILLE, MD 21813
C: 443.614.4422
E: MERCIER@OBEYCLOTHING.COM

INTERNATIONAL SALES
17462 VON KARMAN AVE.
IRVINE, CA 92614 U.S.A.
P: 949.596.8400 / F: 949.596.8437
E: INTL.SALES@OBEYCLOTHING.COM

TABLE OF CONTENTS

04
FEATURE: FRIENDS OF THE PROGRAM

10
FAIR TRADE

12
COLLECTION I: SPORTSWEAR

26
COLLECTION I: ACCESSORIES

28
COLLECTION II: SPORTSWEAR

39
COLLECTION II: ACCESSORIES

42
COLLECTION III: SPORTSWEAR

54
COLLECTION I: ACCESSORIES

58
CAD CATEGORY ROUND-UP

62
OBEY AWARENESS: 350.ORG

64
DELANCEY CREWS

66
CAMDEN CREWS

68
MASCOT HOODIES

69
WASSON HOODIES

70
L'ESPRIT DE LA LIBERTE CREWS

72
L'ESPRIT DE LA LIBERTE HOODIES

74
LOFTY CREWS

76
LOFTY PULLOVER HOODIES

78
SALVAGE LONG SLEEVE TEES

80
THROWBACK THERMAL RAGLANS

82
MAXWELL LONG SLEEVE TEES

84
CHARLIE FITTED LONG SLEEVE TEES

86
HANNA LONG SLEEVE TEES

88
ALEXA MOCK NECKS

90
SOLD OUT RAGLANS

92
SOLD OUT RINGER TEES

94
LESTER TEES

96
DREE TEES

98
DYLAN TEES

100
ROSARIO POCKET TEES

102
MICROSTRIPE AND HANNA CREW TEES

104
CLASSIC CREW TEES

106
GORDON CUT OFF RAGLANS

108
CHLOE TANKS

OBEY

FRIENDS OF THE PROGRAM:



SLOW
CULTURE
LOS AN
GELES

943 N. Hill St. Los Angeles, CA 90012
www.slowculture.com

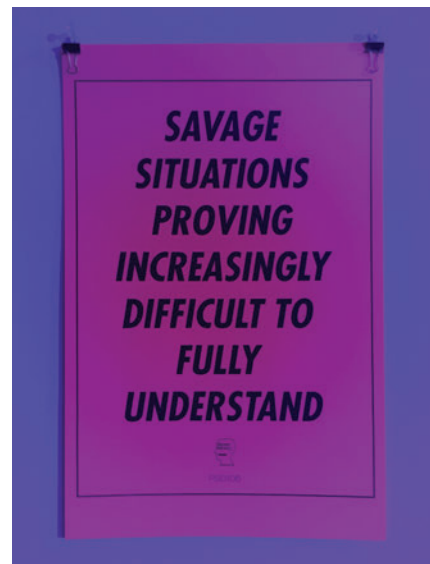
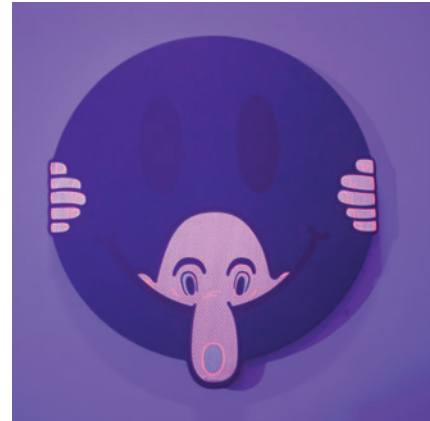
Established August 2013, Slow Culture was an independent art gallery and project space located in the historic Northeast Los Angeles neighborhood of Highland Park. As of February 2016, we have relocated to Chinatown in Los Angeles, California. Over the past three years, their concept has evolved



from their original intentions and they found a new home to pave way for our growth. From visual artists to musicians to independent publishers, their goal is to provide a platform for their creative community to showcase their work. Established as an art gallery, Slow Culture's new home will also provide artists with a workspace and studio to help foster new projects, workshops, and installations.

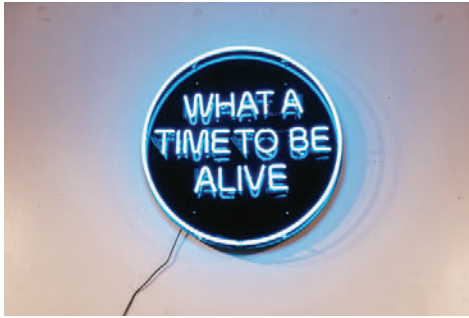
Here are few highlights from the past year..

LIGHTS OUT: BLACK LIGHT GROUP SHOW



Slow Culture presented "Lights Out," a black light group show & pop-up shop curated in collaboration with art collective: Brain Dead. Inspired by psychedelic artwork and underground black light culture, they gathered a diverse crossover of international artists to create all new work utilizing UV sensitive materials. Additionally, they converted the lighting in the gallery to an all black light system special for the show.

WHAT A TIME TO BE ALIVE SHOW



This collaborative show between two independently-owned and run L.A. art galleries, Sunday and Slow Culture, is meant to instigate honest and open conversation between artists and the community on social issues and current events. With the recent, ever increasing development and reach of social media, fame and awareness are more accessible. Sensations are born on the internet; some become pop stars, some just moments, and others may create movements. The ability to access more information has made a strong impact on the collective practice in the art scene. It is important for individuals, artists, organizations and brands to come together and use whatever established platforms we can access to comment on society and what we can do as a community to comprehensively seek and incite change. What A Time To Be Alive is a critique and celebration of the modern world; solidarity and political platforms through social media, the emergence and importance of contemporary pop culture, the distrust of institutions, and the instigation of meaningful conversation between all people.



HAMBURGER EYES "CYBERNETICS" SHOW



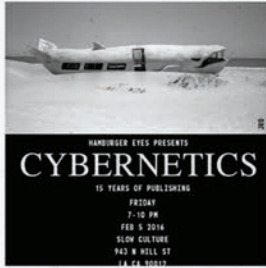
Slow Culture Gallery presents Hamburger Eyes "CYBERNETICS." A retrospective photography exhibition celebrating 15 years of independent publishing. On display will be 500+ photographs ranging from 8" x 10" to 4' x 6'. All exclusively selected for this prolific show.

ABOUT HAMBURGER EYES

Hamburger Eyes began as a small xerox copied zine and today, has grown into a world class photography magazine as well as a publisher of signature titles from various photographers from all over the globe. Publishing since 2001, they have "developed" their own signature brand of photography and provided an outlet for both upcoming and established photographers worldwide. They have produced hundreds of titles of zines, magazines, and books.



PAST SHOWS



Hamburger Eyes



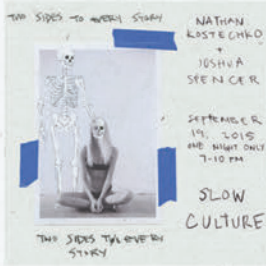
What A Time To Be Alive



Justin Hager - Earth People



Mel Kadel - Sky's Eyes



Nathan Kostechko + Joshua Spencer



Milk and Honey



Deeds Not Words 3



Brain Dead - Lights Out



Felix The Cat - Cat's Out Of The Bag



Jerry Hsu - A Love Like Mine Is Hard To Find



Joe Roberts - LSD Worldpeace



Big Butter - A Step Felt In Full - Mike & Tim Biskup



Deadbeat Club - Mentally Retired



Paul Chan - Off Safety



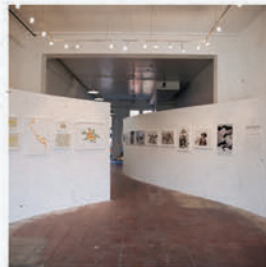
Jay Howell - Come Down Easy



Hoop Dreams - Nathan Bell & Bill Mcright



The Quiet Life x Katsuo Design Pop-Up-Shop



Our Open Road - Terra Incognita



Travis Millard - Kiss My Aura

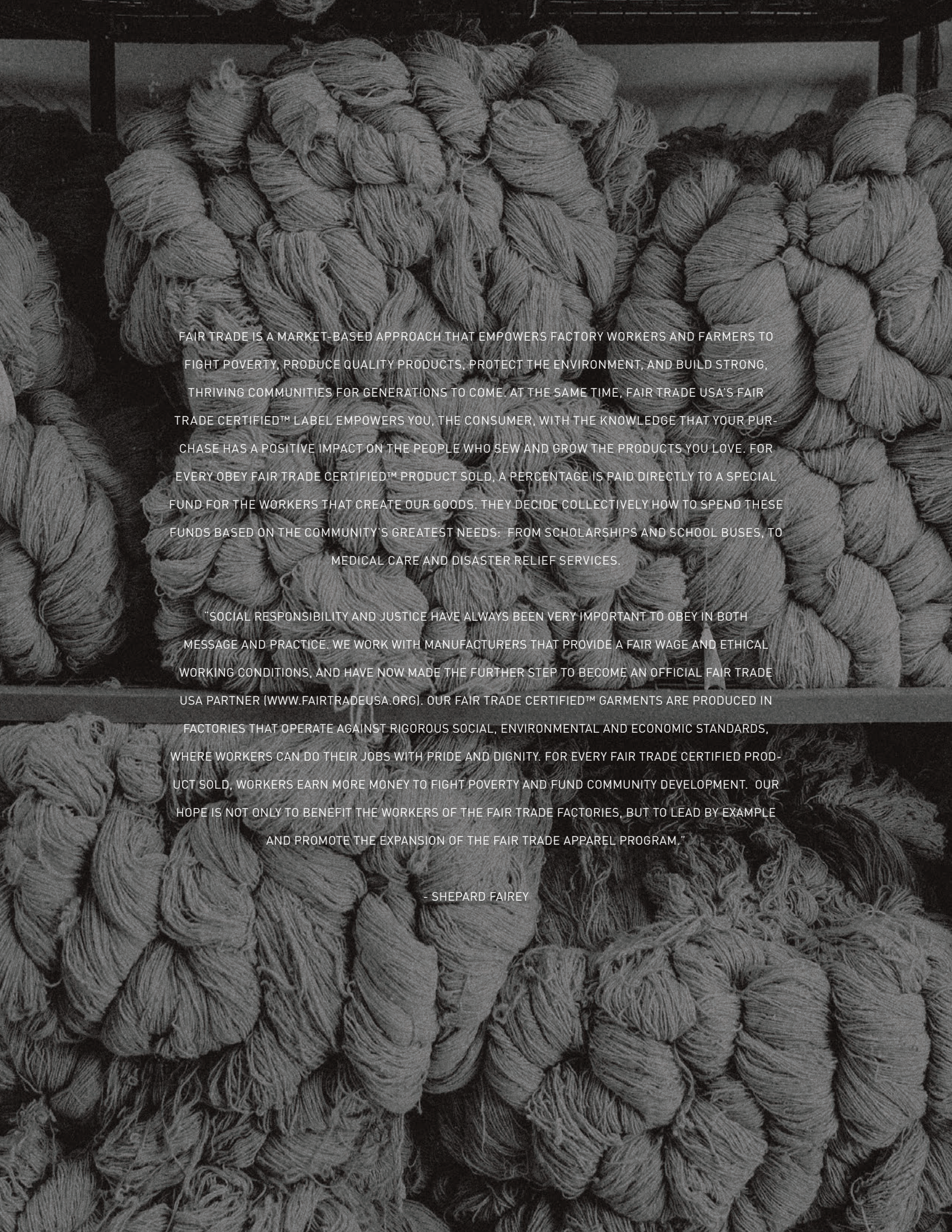


Amanny Ahmad - Perpetual Motion

**BUY
FAIR.
BE
FAIR.**

FAIR TRADE





FAIR TRADE IS A MARKET-BASED APPROACH THAT EMPOWERS FACTORY WORKERS AND FARMERS TO FIGHT POVERTY, PRODUCE QUALITY PRODUCTS, PROTECT THE ENVIRONMENT, AND BUILD STRONG, THRIVING COMMUNITIES FOR GENERATIONS TO COME. AT THE SAME TIME, FAIR TRADE USA'S FAIR TRADE CERTIFIED™ LABEL EMPOWERS YOU, THE CONSUMER, WITH THE KNOWLEDGE THAT YOUR PURCHASE HAS A POSITIVE IMPACT ON THE PEOPLE WHO SEW AND GROW THE PRODUCTS YOU LOVE. FOR EVERY OBEY FAIR TRADE CERTIFIED™ PRODUCT SOLD, A PERCENTAGE IS PAID DIRECTLY TO A SPECIAL FUND FOR THE WORKERS THAT CREATE OUR GOODS. THEY DECIDE COLLECTIVELY HOW TO SPEND THESE FUNDS BASED ON THE COMMUNITY'S GREATEST NEEDS: FROM SCHOLARSHIPS AND SCHOOL BUSES, TO MEDICAL CARE AND DISASTER RELIEF SERVICES.

"SOCIAL RESPONSIBILITY AND JUSTICE HAVE ALWAYS BEEN VERY IMPORTANT TO OBEY IN BOTH MESSAGE AND PRACTICE. WE WORK WITH MANUFACTURERS THAT PROVIDE A FAIR WAGE AND ETHICAL WORKING CONDITIONS, AND HAVE NOW MADE THE FURTHER STEP TO BECOME AN OFFICIAL FAIR TRADE USA PARTNER (WWW.FAIRTRADEUSA.ORG). OUR FAIR TRADE CERTIFIED™ GARMENTS ARE PRODUCED IN FACTORIES THAT OPERATE AGAINST RIGOROUS SOCIAL, ENVIRONMENTAL AND ECONOMIC STANDARDS, WHERE WORKERS CAN DO THEIR JOBS WITH PRIDE AND DIGNITY. FOR EVERY FAIR TRADE CERTIFIED PRODUCT SOLD, WORKERS EARN MORE MONEY TO FIGHT POVERTY AND FUND COMMUNITY DEVELOPMENT. OUR HOPE IS NOT ONLY TO BENEFIT THE WORKERS OF THE FAIR TRADE FACTORIES, BUT TO LEAD BY EXAMPLE AND PROMOTE THE EXPANSION OF THE FAIR TRADE APPAREL PROGRAM."

- SHEPARD FAIREY



COLLECTION I



Karina Coat / Joan Strap Back Dress

COLLECTION I

DIABLO LEATHER JACKET

221800158

- Slightly oversized fit genuine leather jacket with chunky metal zippers
- Features custom Shepard Fairey screenprint at interior and logo snaps
- Secretly stow away your treasures in the waistband zipper compartment
- SHELL: 100% Goat Leather; LINING: 100% Polyester



A.

	COLOR	XXS	XS	S	M	L
A.	BLACK					

PATTI COAT

221800160

- Classic fit, single button front long length driver's coat
- Comes un-lined for a nice drape and length hits behind the knee
- Features custom OBEY metal pins at lapel and contrast cordoroy top collar
- SHELL: 88% Polyester / 10% Rayon / 2% Elastane; CONTRAST: 100% Cotton



A.

	COLOR	XXS	XS	S	M	L
A.	HEATHER CHARCOAL					

JAGGER TRENCH COAT

221800161

- Classic fit trench coat cut in soft wide wale cordoroy with belt
- Comes unlined for a nice drape and length hits above the knee
- Features a custom OBEY metal pin at lapel and embroidery at back belt
- 100% Cotton



A.

B.

	COLOR	XXS	XS	S	M	L
A.	KHAKI					
B.	BLACK					

EASY RIDER TRENCH COAT

221800157

- Oversized fit drapery trench coat with moto jacket details throughout
- Comes in a soft feminine water resistant fabric and is fully lined
- Features a removable zip hood and back storm flap
- Fashion meets function in this unique trench silhouette
- SHELL: 87% Polyester / 13% Nylon; LINING: 100% Polyester



A.

	COLOR	XXS	XS	S	M	L
A.	FOREST ARMY					

SPORTSWEAR

KARINA COAT

221800164

- A-line relaxed fit peacoat with oversized collar, comes fully lined
- Cut from a premium wool blend, in a statement leopard jacquard and classic navy
- Features custom OBEY 'Cherry' enamel pin at lapel
- The perfect coat to throw over your party attire
- SHELL: 69% Polyester / 31% Wool; LINING: 100% Polyester



	COLOR	XXS	XS	S	M	L
A.	NAVY					
B.	LEOPARD					

KARINA BOMBER JACKET

221800162

- Relaxed fit bomber jacket with MA-1 details, comes fully lined
- Cut from a premium wool blend, in a statement leopard jacquard and classic navy
- Contrast black trims add an edgy bite to these color stories
- SHELL: 69% Polyester / 31% Wool; LINING: 100% Polyester



	COLOR	XXS	XS	S	M	L
A.	LEOPARD					
B.	NAVY					

AMANDA BOMBER BLOUSE

221160003

- Comes in a sheer woven with a custom OBEY burnout pattern and amazing drape and solid modal contrast pieces
- BODY: 70% Polyester / 30% Viscose; CONTRAST: 100% Modal



	COLOR	XXS	XS	S	M	L
A.	BLACK					

SHERPA FLYNT WRAP

251010031

- Oversized fit belted sweater coat with hood lined with soft cloud sherpa yarns
- Comes in an exploded buffalo check pattern
- Take cover and wrap yourself up in the Flynt
- SHELL: 100% Acrylic; HOOD LINING: 100% Polyester



	COLOR	XS/S	M/L			
A.	RED MULTI					
B.	CREAM MULTI					

COLLECTION I
NO. 89 CAPSULE

NO. 89 CLASSIC CREWNECK

211600084

- Slightly shrunken fit crew neck with wide rib details
- Cut from a mid-weight, premium French terry for a clean and classic look
- Features an OBEY peeking icon pin at chest
- 80% Cotton / 20% Polyester



	COLOR	XXS	XS	S	M	L
A.	WHITE					
B.	BLACK					

NO. 89 BUTTON-DOWN

281200073

- Our classic fit, feminine button-down shirt with added body length
- Comes in midweight sateen for a crisp, clean look
- A new No. 89 staple, features an OBEY peeking icon patch at chest
- 100% Cotton



	COLOR	XXS	XS	S	M	L
A.	NAVY					
B.	WHITE					

NO.89 V-NECK

251000054

- Classic fit, V-neck sweater with flattering side rib detail
- Comes in a premium cotton yarn with a soft drape
- Features an OBEY peeking icon patch at chest
- 100% Cotton



	COLOR	XXS	XS	S	M	L
A.	BLACK					
B.	CREAM					
C.	ASH HEATHER					

NO.89 CARDIGAN

251010030

- Boyfriend fit sweater cardigan with pockets
- Comes in a premium cotton yarn with a novelty textured stitch
- Features an OBEY peeking icon patch at chest
- 100% Cotton



	COLOR	XXS	XS	S	M	L
A.	ASH HEATHER					
B.	BLACK					
C.	CREAM					

SPORTSWEAR



Jagger Trench Coat

COLLECTION I



Sophia Turtleneck / Jagger Suspender Trouser

SPORTSWEAR

SOPHIA TURTLENECK

- Body-skimming, long sleeved turtleneck top
- Cut from an extra wide rib made from jewel tone space dyed yarns
- Also offered in Solid Black
- 52% Cotton / 48% Polyester



A.

B.



231030060

	COLOR	XXS	XS	S	M	L
A.	ROSE MULTI					
B.	BLACK					

SOPHIA CAMI

- Fitted V-neck cami
- Cut from an extra wide rib made from jewel tone space dyed yarns
- Sexy, delicate rib strap details
- Also offered in Solid Black
- 52% Cotton / 48% Polyester



A.

B.



234050086

	COLOR	XXS	XS	S	M	L
A.	BLACK					
B.	ROSE MULTI					

COVERT SWEATER CREW

- Relaxed fit crewneck sweater with uneven hem and slit detail
- Comes in the softest plush alpaca blend yarns with a waffle stitch
- Features custom OBEY 'What We Do is Secret' embroideries at chest
- 47% Acrylic / 30% Nylon / 13% Wool / 10% Alpaca



A.

B.



C.

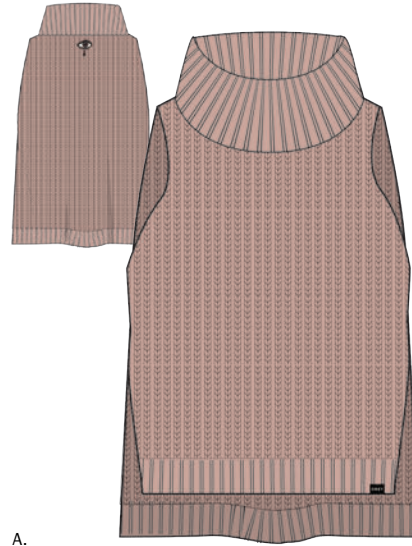


251000053

	COLOR	XXS	XS	S	M	L
A.	NAVY					
B.	FOREST ARMY					
C.	ROSE					

COVERT SWEATER TURTLENECK

- Body-skimming, sleeveless turtleneck sweater with uneven hem
- Comes in the softest plush alpaca blend yarns with a waffle stitch
- Features a sexy side slit detail, this can be worn layered or bare
- Comes with custom OBEY 'Eye' embroidery at back neck
- 47% Acrylic / 30% Nylon / 13% Wool / 10% Alpaca



A.

B.



C.



251000055

	COLOR	XXS	XS	S	M	L
A.	ROSE					
B.	FOREST ARMY					
C.	NAVY					

COLLECTION I

AMMALYN BUTTON-DOWN

- Classic fit button-down shirt with chest pocket
- Comes in a drapey, dreamy soft, silky custom OBEY plaid twill
- A fresh update to an OBEY best-selling classic
- 100% Viscose

281200075

AMANDA BUTTON-DOWN

- Classic fit button-down blouse with a V-neck tie front detail
- Comes in a sheer woven with a custom OBEY burnout pattern and amazing drape
- A downright sexy shirt, this vintage-inspired blouse is everything
- 70% Polyester / 30% Viscose

281200078



	COLOR	XXS	XS	S	M	L
A.	RED MULTI					
B.	BLACK MULTI					



	COLOR	XXS	XS	S	M	L
A.	BLACK					

HEART NOIR SHIRT

- Silky, collared button-down blouse with lace trim sleeves
- Premium drapey cupro blend fabric feels luxurious in a button-down shirt
- Turn that black heart onto something new and racy like this easy-to-wear top
- 60% Cupro / 40% Viscose

281210049

HEART NOIR SKIRT

- Silky lingerie-inspired midi skirt with lace trim and a sexy slit at the front
- Premium drapey cupro blend fabric feels luxurious
- Turn that black heart onto something new and racy like this easy-to-wear pull-on skirt
- CENTER BACK LENGTH: 29"
- 60% Cupro / 40% Viscose

411550043



	COLOR	XXS	XS	S	M	L
A.	BLACK					



	COLOR	XXS	XS	S	M	L
A.	BLACK					

SPORTSWEAR

AMANDA SLIP DRESS

401500145

- Sexy slip dress with strappy detail at front neckline, fully lined
- Comes in a sheer woven with a custom OBEY burnout pattern and amazing drape and solid modal contrast
- The perfect little black party dress
- BODY: 70% Polyester / 30% Viscose; LINING: 100% Modal



A.

	COLOR	XXS	XS	S	M	L
A.	BLACK					

JOAN STRAP BACK DRESS

401500150

- Body-conscious midi length dress
- Features a fully open back with bondage-inspired strapping details
- Perfect holiday dress for your bad reputation
- 95% Rayon / 5% Spandex



A.

	COLOR	XXS	XS	S	M	L
A.	BLACK					

AMMALYN SHIRT DRESS

401500147

- Classic fit, button-down shirt dress with chest pocket
- Comes in a drapery dreamy soft silky custom OBEY plaid twill
- A fresh update to an OBEY best selling classic
- 100% Viscose



A.

B.



	COLOR	XXS	XS	S	M	L
A.	BLACK MULTI					
B.	RED MULTI					

HANNA MOCK NECK DRESS

401500144

- Sexy fit mockneck ribbed sweater dress with side leg slit
- Features directional rib details at shoulders
- Features an OBEY OG pin at chest with leather label at back neck
- 100% Cotton



A.

B.



C.



	COLOR	XXS	XS	S	M	L
A.	AVOCADO					
B.	BLACK					
C.	MULTI					

COLLECTION I



Covert Sweater Crewneck / Julia Sweater Skirt / Hardy Cap

SPORTSWEAR

AMMALYN SKIRT

- Soft, A-line skirt with side button-down placket details
- Comes in a drapey, dreamy, soft, silky custom OBEY plaid twill
- Hidden zipper closure at back waist, hits at a short midi length
- CENTER BACK LENGTH: 30"
- 100% Viscose

411550048



	COLOR	24	25	26	27	28	29	30	31	32
A.	RED MULTI									
B.	BLACK MULTI									

JULIA SWEATER SKIRT

- Body-skimming, ribbed sweater skirt with belt, hits below the calf and sweep opens up slightly at the hem
- Features an adjustable D-ring belt with custom OBEY 'Riots Not Diets' embroidery at back
- A must-have piece this season, this knit rib skirt hugs your curves in all the right places
- CENTER BACK LENGTH: 32"
- 100% Cotton

411550046



	COLOR	XXS	XS	S	M	L
A.	MULTI					
B.	BLACK					

JAGGER SUSPENDER TROUSER

- Relaxed fit, low-rise trousers with a slightly tapered leg
- Cut in a soft wide wale cord, comes with removable suspender straps
- Features minimal pleats and custom OBEY 'Question Everything' embroidery at back straps
- RISE: 10 3/4"; LEG OPENING: 12 1/2"; INSEAM: 26"
- 100% Cotton

242020023

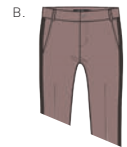
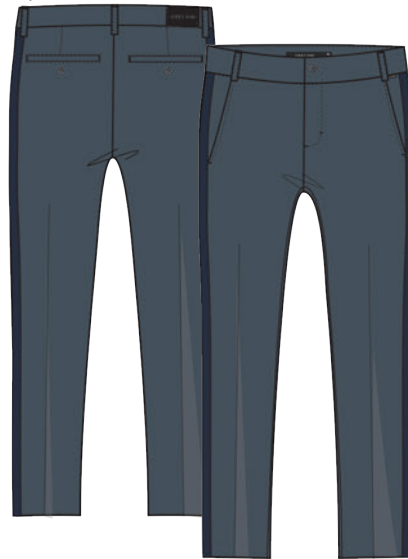


	COLOR	24	25	26	27	28	29	30	31	32
A.	BLACK									
B.	KHAKI									

MALICE TROUSER

- Menswear-inspired trousers with contrast stripe at sides, low-rise with a slightly tapered leg
- Comes in a flooded inseam that grazes the ankle
- Cut in a midweight sateen that has a soft luster, can be worn dressed up or down
- RISE: 9 1/2"; LEG OPENING: 19 3/4"; INSEAM: 26"
- 100% Polyester

242020024



	COLOR	24	25	26	27	28	29	30	31	32
A.	DARK SLATE									
B.	TAUPE									

COLLECTION I

SLASHER SKINNY JEAN

- High-waisted, skinny fit, five-pocket stretch denim
- Features a cropped inseam that hits above the ankle
- Slashes are raw cut at the knees
- RISE: 10 1/2"; LEG OPENING: 9 1/2"; INSEAM: 29 1/2"
- 98% Cotton / 2% Polyester

242010031



	COLOR	24	25	26	27	28	29	30	31	32
A.	BLACK									
B.	DARK INDIGO									

JULIA SOCKS

- Cozy marled stripe tube sock
- Comes with custom OBEY patch and rubber printed non-slip logo at bottom
- 75% Cotton / 23% Polyester / 2% Spandex

200260040



	COLOR	O/S				
A.	MULTI STRIPE					

MADLINE HAT

- Tear drop crown fedora
- Shaped in luxurious winter weight wool
- Features custom OBEY braided faux leather hat band and classic OBEY pop red grosgrain interior
- BODY: 100% Wool; TRIM: 100% PU

200540000

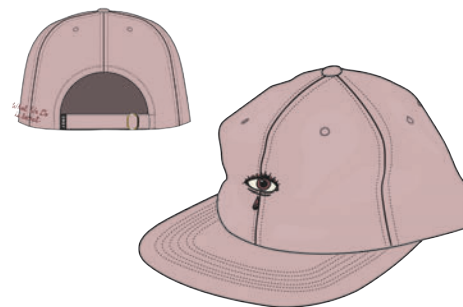


	COLOR	O/S				
A.	BLACK					

COVERT HAT

- Soft unstructured baseball hat with a retro dad-hat fit
- Custom embroidery at front and side
- Slightly washed for a perfect color effect
- 100% Cotton

200140071



	COLOR	O/S				
A.	ROSE					
B.	FOREST ARMY					

SPORTSWEAR



Madeline hat / Covert Sweater Crewneck

ACCESSORIES

DONAVAN BEANIE

- Classic beanie with marled stripe
- OBEY flag label at cuff
- 100% Acrylic

200030070



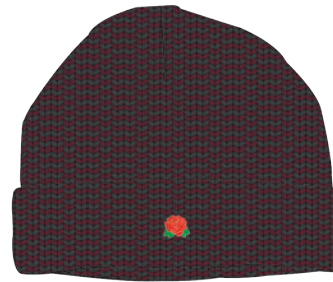
A.

	COLOR	O/S				
A.	MULTI STRIPE					

ROSE HILL BEANIE

- Classic beanie with a multi-tone marled effect
- OBEY enamel rose rivet at center front
- 100% Acrylic

200030066



A.

	COLOR	O/S				
A.	BURGUNDY MULTI					
B.	EMERALD MULTI					
C.	CHARCOAL MULTI					
D.	HEATHER GREY MULTI					

B.



C.



D.



ARCADIA BEANIE

- Classic beanie with multi-toned marled effect
- OBEY flag label at cuff
- 100% Acrylic

200030013



A.

	COLOR	O/S				
A.	FOREST ARMY					

HARLOW BEANIE

- Fine knit gas station beanie with rolled cuff
- Leather OBEY fashion label at center front
- 100% Acrylic

200030067



A.

	COLOR	O/S				
A.	BLACK MULTI					
B.	BLUSH MULTI					

B.



ACCESSORIES

JETT CLUTCH

200010129

- Zip-top folded clutch purse with removable wristlet
- Crafted in beautifully embossed textured leather
- Features shiny silver hardware and OBEY fashion metal trim
- BODY: 100% Leather; LINING: 100% Polyester



A.

	COLOR	O/S				
A.	BLACK					

JETT ZIP AROUND WALLET

200310018

- Long and slim bi-fold wallet with zip around closure
- Crafted in beautifully embossed textured leather
- Features shiny silver hardware and OBEY fashion metal trim
- BODY: 100% Leather; LINING: 100% Polyester



A.

	COLOR	O/S				
A.	BLACK					

JETT ID WALLET

200310017

- ID wallet with multiple card slots and center bill pocket
- Crafted in beautifully embossed textured leather
- Features shiny silver OBEY fashion metal trim
- BODY: 100% Leather; LINING: 100% Polyester



A.

	COLOR	O/S				
A.	BLACK					



COLLECTION II



Zoey Cut Out Dress / Arctic Sherpa Fleece Moto

COLLECTION II

NOMADS JACKET

221800144

- Elongated suede bomber jacket with a minimal MA-1 sleeve pocket detail
- Features a custom OBEY printed satin lining and sweater rib trims
- Dark navy suede reads rich and mysterious in this modern classic jacket that you'll have forever
- SHELL: 100% Leather; LINING: 100% Polyester



A.

	COLOR	XXS	XS	S	M	L
A.	NAVY					

SHERPA BERINGBRIDGE PARKA

221800148

- Long length parka with soft sherpa lining and an oversized body
- Features an adjustable waist tie and snap closure pockets
- A feminine spin on military snorkle parkas, this drapery lyocell twill is insulated with a warm cloud sherpa lining
- SHELL: 100% Lyocell; LINING: 100% Polyester; FILLING: 100% Polyester



A.

B.



	COLOR	XXS	XS	S	M	L
A.	CAMO					
B.	BLACK					

RIDGEFIELD JACKET

221800150

- Relaxed, feminine-fit Harrington Jacket with cloud sherpa and plaid flannel lining
- Comes in a specialty lyocell Bedford cord with the most amazing drape and soft handfeel
- Sweater rib trim details
- SHELL: 100% Lyocell; LINING: 100% Polyester; FILLING: 100% Polyester; CONTRAST: 100% Cotton

B.



A.

	COLOR	XXS	XS	S	M	L
A.	DARK KHAKI					
B.	BLACK					

SPORTSWEAR

ARCTIC SHERPA FLEECE MOTO

211800008

- Super cozy, A-line fit, zip-up moto-style sherpa fleece with front belt detail
- Cut from a premium knit wool blend sherpa flipped inside out and with soft brushed back fleece lining
- Features pockets and comes with a custom OBEY enamel 'Cherry' pin and logo metal bar
- SHELL: 77% Polyester / 23% Wool; BODY LINING: 65% Polyester / 35% Cotton; SLEEVE LINING: 100% Polyester



	COLOR	XXS	XS	S	M	L
A.	BLACK					
B.	TAUPE					

ARCTIC SHERPA FLEECE ZIP-UP

211800007

- Super cozy, relaxed fit, zip-up bomber-style sherpa fleece with contrast sleeves and rib trim
- Cut from a premium knit, wool blend sherpa flipped inside out and with soft brushed back fleece lining
- Features pockets and comes with an OBEY metal bar
- SHELL: 77% Polyester / 23% Wool; BODY LINING: 65% Polyester / 35% Cotton; SLEEVE LINING: 100% Polyester



	COLOR	XXS	XS	S	M	L
A.	BLACK / TAUPE					

SLACKER VIBES JACKET

221800165

- Feminine fit, taffeta coach's jacket with a snap front closure and three-piece hood
- Features assorted custom OBEY printed front and back graphic hits
- Fully lined and comes with a water resistant coating
- 100% Polyester



	COLOR	XXS	XS	S	M	L
A.	NAVY					
B.	BLACK					

SADIE SATIN JACKET

221800146

- Relaxed fit shiny satin bomber with front pockets and panel seaming
- Features specialty custom OBEY embroidered artwork
- Insulated with quilted lining and water resistant fabric coating
- SHELL: 97% Polyester / 3% Elastane; LINING: 100% Polyester; FILLING: 100% Polyester



	COLOR	XXS	XS	S	M	L
A.	BLACK					

COLLECTION II

ELMSWORTH SWEATER COAT

- Relaxed fit, double-breasted long sweater coat
- Comes with a shawl collar and pockets
- Features an OBEY label at pocket
- 70% Acrylic / 30% Wool

251010029



	COLOR	XXS	XS	S	M	L
A.	BLACK					
B.	SAND					

EIRENE SWEATER JACKET

- Oversized fit, zip front jacket with welt pockets
- Thick and thin yarns in a custom OBEY jacquard pattern
- Features Shepard Fairey's "Militant Peace" doves
- 68% Cotton / 32% Acrylic

251010026



	COLOR	XXS	XS	S	M	L
A.	BLACK MULTI					

FREJA CABLE CREW

- Relaxed fit, cable knit raglan crewneck sweater
- Soft winter weight yarns come together in classic cables
- We are also offering a novelty rugby striped version to lift your moody winter blues
- 100% Acrylic

251000051



	COLOR	XXS	XS	S	M	L
A.	STORM MULTI					
B.	ECRU					
C.	BLACK MULTI					

KARLY PULLOVER FLEECE

- Relaxed fit, structured fleece pullover
- Features a draped, foldover funnel neck
- Wide, shrunken sleeves and raw edge details
- Cut in a warm interlock rib with a heathered jersey interior
- A layering must-have
- 100% Cotton

211620029



	COLOR	XXS	XS	S	M	L
A.	ECRU					
B.	MARSALA					

SPORTSWEAR



Elmsworth Sweater Coat / Grim Roses Dylan Tee / Slasher Skinny Jean

COLLECTION II

WASSON HOODIE ART DEPARTMENT

- Oversize pullover hoodie with a slight bell sleeve
- Features side panels and raw edge details
- Novelty, vintage-inspired obey chainstitch artwork on front
- Made in USA
- 59% Cotton / 36% Polyester / 5% Rayon

211610046



A.

	COLOR	XS/S	M/L			
A.	STONE GREY					

ATHENA POLO

- Body-skimming, classic polo shirt cut from a drapey rib knit jersey with a ribbed polo collar
- Features a button front placket, short sleeves and ribbed armbands
- Small OBEY sign language patch at front chest
- 96% Rayon / 4% Spandex

231090000



A.



B.

	COLOR	XXS	XS	S	M	L
A.	NAVY / NATURAL					
B.	BLACK					

AMAYA V NECK TOP

- Relaxed fit, long sleeved V-neck top
- Features a slight A-line shape in a slinky jersey
- Plunging neckline with a self strap back detail
- 65% Polyester / 35% Rayon

231030062



A.



B.

	COLOR	XXS	XS	S	M	L
A.	BLACK					
B.	BERRY					

SPORTSWEAR

JUST KIDS SHIRT

- Classic fit, feminine button-down shirt with chest pocket
- Cut in drapey viscose, this wear-with-everything shirt is a closet staple
- Comes in solid and a novelty custom OBEY print
- 100% Viscose

281200027



	COLOR	XXS	XS	S	M	L
A.	NAVY MULTI					
B.	CHILI PEPPER					
C.	NATURAL MULTI					

GARRISON BUTTON-DOWN

- Our updated boyfriend fit button-down flannel shirt with chest pocket
- Comes in an oversized plaid pattern twill
- Features a button-down placket at center back
- 100% Cotton

281200076



	COLOR	XXS	XS	S	M	L
A.	NAVY MULTI					
B.	RED MULTI					

SWANSON BUTTON-DOWN

- Classic fit, button-down flannel shirt with chest pocket
- Comes in a borrowed-from-the-boys printed plaid with a vintage wash
- 100% Cotton

281200074



	COLOR	XXS	XS	S	M	L
A.	CHARCOAL MULTI					
B.	RED MULTI					

ERIE BUTTON-DOWN

- Our updated boyfriend fit button-down flannel shirt with chest pocket
- Comes in a borrowed-from-the-boys yarn dyed plaid that's super soft to the touch
- 65% Cotton / 35% Acrylic

281200077



	COLOR	XXS	XS	S	M	L
A.	NAVY MULTI					
B.	RED MULTI					

COLLECTION II

SARAH ROMPER

272140011

- Long sleeved body skimming short romper with a double breasted button front placket
- Front rise features an asymmetrical overlapped detail
- One piece dressing that feels comfortable and luxe
- 100% Viscose



B.



A.

	COLOR	XXS	XS	S	M	L
A.	NATURAL MULTI					
B.	BLACK					

SARAH DRESS

401500146

- Body-skimming, feminine button-down shirt dress with retro tie front detail
- Cut in drapey viscose, this dress is sexy and simple, taking you effortlessly from day to night
- Comes in solid and a novelty custom OBEY print
- 100% Viscose



B.



A.

	COLOR	XXS	XS	S	M	L
A.	CHILI PEPPER					
B.	NAVY MULTI					

ZOEY CUT OUT DRESS

401500149

- Slim fit, long sleeved turtleneck dress
- Features angular cut-outs at shoulders with a deep open back
- 95% Rayon / 5% Spandex



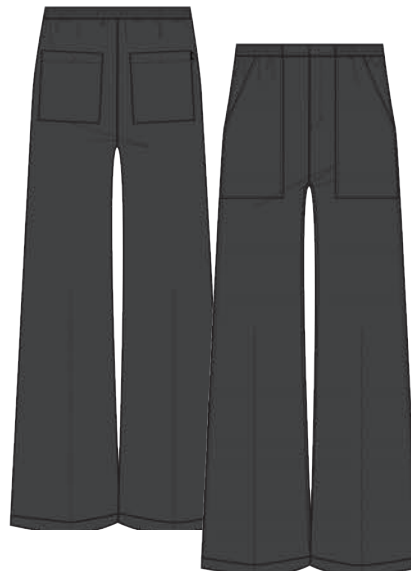
A.

	COLOR	XXS	XS	S	M	L
A.	BLACK MULTI					

SARAH TROUSER

242000047

- Wide leg pant with hem cuffs, comes with an elasticized waistband
- Cut in heavy viscose for great drape and movement
- This must-have silhouette comes in solids and a novelty custom OBEY print
- RISE: 11"; LEG OPENING: 21"; INSEAM: 32"
- 100% Viscose



B.



C.



A.

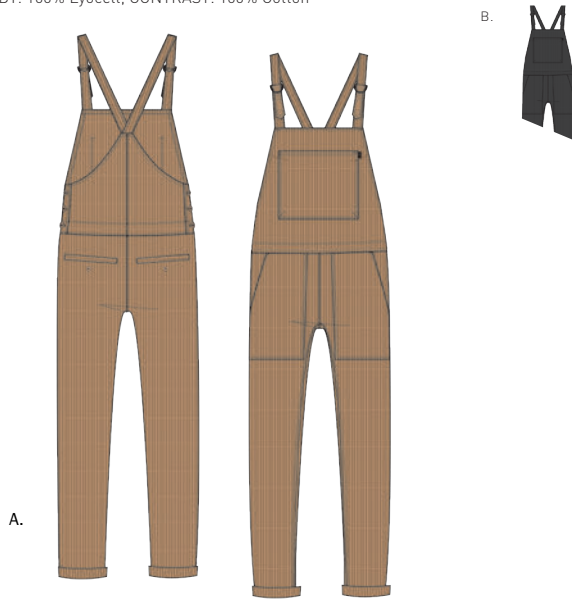
	COLOR	XXS	XS	S	M	L
A.	BLACK					
B.	CHILI PEPPER					
C.	NAVY MULTI					

SPORTSWEAR

RIDGEFIELD OVERALLS

242020022

- Easy fit workwear overalls in a cropped ankle grazing length and a slim leg
- Comes in a specialty lyocell Bedford cord with the most amazing drape and soft handfeel
- An elevated take on the utilitarian overall, you can dress this up or down because the fabric is so amazing
- INSEAM: 27"
- BODY: 100% Lyocell; CONTRAST: 100% Cotton



	COLOR	24	25	26	27	28	29	30	31	32
A.	DARK KHAKI									
B.	BLACK									

SUNDAYS STRAIGHT LEG JEAN

242010032

- High-waisted rigid, washed down five pocket denim with slashes at the knees and button-fly
- Ankle length inseam, with a straight leg fit, and slim but relaxed through the thigh
- Features a custom OBEY peeking icon embroidery at back pocket opening
- RISE: 10 1/2"; LEG OPENING: 15"; INSEAM: 29 1/2"
- 100% Cotton



	COLOR	24	25	26	27	28	29	30	31	32
A.	STONE INDIGO									

ZOEY LEGGINGS

242050005

- Fitted, mid-rise legging
- Knit with novelty, space-dyed yarns
- RISE: 8"; LEG OPENING: 8"; INSEAM: 25 1/2"
- 95% Rayon / 5% Spandex



	COLOR	XXS	XS	S	M	L
A.	BLACK MULTI					

SWEET AND VICIOUS SET

231180001

- Relaxed fit, long sleeved thermal top and thermal legging
- Features exaggerated rib cuffs, coverstitching details and custom OBEY 'Eat Shit' patch at chest
- 97% Cotton / 3% Spandex



	COLOR	XXS	XS	S	M	L
A.	DARK SLATE					
B.	BLACK					

COLLECTION II



OBEY Art Department Liberte Crew / Slasher Skinny Jean

ACCESSORIES

KLEID BACKPACK

200010120

- An OBEY twist on a classic '90s mini backpack
- Waxed canvas mixed with faux leather and shiny silver hardware moto details make this the perfect mash-up of fashion and utility
- Features adjustable herringbone shoulder straps and double zip entry
- BODY: 100% Cotton; TRIM: 100% PU; WEBBING: 100% Cotton



A.

	COLOR	O/S					
A.	BLACK						

KLEID CARRY ALL

200010121

- Zip-top weekender tote bag with front zip pocket
- Waxed canvas mixed with faux leather and shiny silver hardware moto details make this the perfect mash-up of fashion and utility
- Features double herringbone shoulder straps with reinforced faux leather shoulder strap
- BODY: 100% Cotton; TRIM: 100% PU; WEBBING: 100% Cotton



A.

	COLOR	O/S					
A.	BLACK						

KLEID MINI CLUTCH

200010122

- Multi-purpose zip clutch
- Waxed canvas mixed with faux leather and shiny silver hardware moto details make this the perfect mash-up of fashion and utility
- Features leather OBEY fashion label
- 100% Cotton



A.

	COLOR	O/S					
A.	BLACK						

KLEID SLING BAG

200010130

- Low-profile, zip front fanny pack silhouette from our best-selling SP15 Laroche Bum Bag
- Waxed canvas mixed with faux leather and shiny silver hardware moto details make this the perfect mash-up of fashion and utility
- Features leather OBEY fashion label
- 100% Cotton



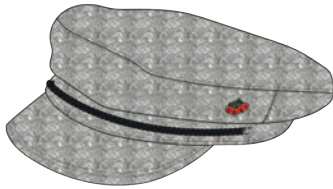
A.

	COLOR	O/S					
A.	BLACK						

COLLECTION II

HARDY CAP II

- Classic fisherman's cap
- Contrast black satin braided rope and OBEY metal trim detail at brim
- Features custom OBEY enamel cherry pin for added flair
- BODY: 50% Wool / 50% Polyester; TRIM: 100% Polyester



A.

	COLOR	O/S				
A.	HEATHER GREY					

200140069

FREJA CABLE POM BEANIE

- Cable sweater knit beanie with soft pom pom
- Features woven jacquard label at center front
- 100% Acrylic



A.

	COLOR	O/S				
A.	STORM MULTI					
B.	ECRU					
C.	BLACK MULTI					

200030064



C.

OH FLORA HAT

- Throwback baseball cap in a custom women's fit with metal compression clip at back
- Features custom OBEY embroidered "O" bull whip adorned with flowers
- Fashion OBEY label at back closure
- 100% Cotton; TRIM: 100% PU

200140072



A.

	COLOR	O/S				
A.	KHAKI					
B.	BURNT BRICK					



B.

ACCESSORIES

TOUGH LOVE EARRING SET

- An eclectic set of mismatched earrings with punk undertones and modern silhouettes
- Plated 100% Nickel Free & Lead Free Brass

200150089

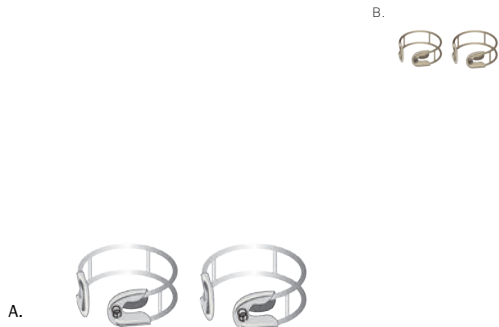


	COLOR	O/S				
A.	ANTIQUÉ GOLD					
B.	ANTIQUÉ WHITE GOLD					

DOUBLE CROSSER RING SET

- Wrap-around safety pin rings come in a set of 2
- Double head pin caps have an engraved 'OG'
- Rings can be slightly adjusted
- Plated 100% Nickel Free & Lead Free Brass

200150094



	COLOR	XS/S	M/L			
A.	ANTIQUÉ WHITE GOLD					
B.	ANTIQUÉ GOLD					

TIME CREEPS CHOKER NECKLACE

- Adjustable fit choker chain neck lace with an asymmetric web bib detail
- Features a custom OBEY hourglass spider pendant
- Plated 100% Nickel Free & Lead Free Brass

200150090



	COLOR	O/S				
A.	BLACK METAL					
B.	ANTIQUÉ GOLD					

PINS & PEARLS BRACELET

- Wrap-around open safety pin bracelet with pearl
- Pin cap has an engraved 'OG'
- Plated 100% Nickel Free & Lead Free Brass

200150092



	COLOR	XS/S	M/L			
A.	ANTIQUÉ GOLD					
B.	ANTIQUÉ WHITE GOLD					

PRETTY BONES RING

- Wrap-around modern open rib cage ring with pearls
- Engraved OBEY logo inside the spine of the ring
- Plated 100% Nickel Free & Lead Free Brass

200150093



	COLOR	5	6	7	8	9
A.	ANTIQUÉ WHITE GOLD					
B.	ANTIQUÉ GOLD					



COLLECTION III



Saxon Parka (liner) / OBEY Youth Micro-Stripe Tee / Sundays Straight Leg Jean / Dope Patches Tote Bag

COLLECTION III

BILLIE VEGAN LEATHER JACKET

221800155

- Cropped and fitted vegan leather moto jacket with chunky metal zippers and removable sherpa collar
- Features custom OBEY print at interior and logo snaps
- Secretly stow away your treasures in the waistband zipper compartment
- SHELL: 100% PU; LINING: 100% Polyester; FAUX FUR: 100% Polyester



A.

	COLOR	XXS	XS	S	M	L
A.	BLACK					

SAXON PARKA

221800143

- Relaxed fit fishtail parka with button-out quilted liner
- Comes in a soft, brushed twill fabric
- Features a three-ways-to-wear option
- SHELL: 100% Cotton; LINING: 100% Polyester; FILLING: 100% Polyester



A.

	COLOR	XXS	XS	S	M	L
A.	MILITARY OLIVE					

STRYKER JACKET

221800156

- Relaxed fit, cloud sherpa lined MA-1 hooded bomber with knit rib detail
- Comes in a soft, feminine water resistant fabric
- A soft update to our best-selling Ace Jacket, the Stryker is a must-have
- SHELL: 87% Polyester / 13% Nylon; LINING: 100% Polyester; FILLING: 100% Polyester



A.

	COLOR	XXS	XS	S	M	L
A.	BLACK					
B.	FOREST ARMY					

BOWIE SHERPA JACKET

221800154

- Oversized, longer length, boyfriend fit trucker jacket with sherpa lining
- Features a custom OBEY embroidered patch at arm
- Better than stealing from your dude's closet, you need this trucker because it's got rips and tucks in all the right places
- SHELL: 100% Cotton; LINING: 100% Polyester



A.

	COLOR	XXS	XS	S	M	L
A.	BLACK					

SPORTSWEAR

VACANCY VARSITY JACKET

221800163

- Feminine fit, varsity jacket has a soft wool blend body and vegan leather sleeves
- Comes fully lined with sweater rib trims
- Features custom OBEY patches
- BODY: 52% Wool / 45% Polyester / 3% Viscose; SLEEVES: 100% PU; LINING: 100% Polyester



A.

	COLOR	XXS	XS	S	M	L
A.	BLACK					

WELNER FLANNEL ZIP-UP

221160004

- Slightly boxy and semi-cropped fit flannel shirt with zip front
- Features front welt pockets and soft elastic shirring at back waist
- Comes with custom OBEY patches
- 100% Cotton



A.

B.

	COLOR	XXS	XS	S	M	L
A.	BROWN MULTI					
B.	HEATHER CHARCOAL					

NITE HOOLIGANS BOMBER

221800166

- Easy fit, satin bomber with snap front closure, fully lined with rib trims
- Features assorted custom OBEY printed front and back graphic hits
- A must-have jacket for thick-skinned hooligans, toughen up your outer shell and try this on for size
- SHELL: 100% Nylon; LINING: 100% Polyester



A.



B.

	COLOR	XXS	XS	S	M	L
A.	FOREST ARMY					
B.	BLACK					

ALPS HOODIE

221800110

- Extra cozy and oversized, this sherpa fleece hoodie doubles as your new go-to faux fur jacket
- Designed for versatility, the Alps is perfect for chilly city nights, creepy campfire tales or mountainside mischief
- 100% Polyester



A.



B.

	COLOR	XXS	XS	S	M	L
A.	DARK KHAKI					
B.	BLACK					

COLLECTION III



Lawndale Hat / Saxon Parka / Patched Comfy Creatures Crew / Kim Cargo Slims

SPORTSWEAR

COMFY CREATURES CREW

- Classic fit, raglan crewneck fleece with coverstitch details
- Cut from the softest comfy fleece fabrication
- Includes OBEY specialty labels at hem and interior neck
- 60% Cotton / 40% Polyester

21160082



	COLOR	XXS	XS	S	M	L
A.	ACACIA					
B.	HEATHER GREY					
C.	SEAFOAM GREEN					
D.	FOREST ARMY					

COMFY CREATURES PULLOVER

- Relaxed fit, raglan pullover sweatshirt with funnel neck
- Cut from the softest comfy fleece fabrication, comes with cream drawcord
- Includes OBEY specialty labels at hem and interior neck
- 60% Cotton / 40% Polyester

211610045



	COLOR	XXS	XS	S	M	L
A.	FOREST ARMY					
B.	HEATHER GREY					
C.	SEAFOAM GREEN					
D.	ACACIA					

PATCHED COMFY CREATURES CREW

- Classic fit, raglan crewneck fleece with coverstitch details
- Cut from the softest comfy fleece fabrication
- Features assorted custom OBEY patches at front and sleeves
- 60% Cotton / 40% Polyester

21160083



	COLOR	XXS	XS	S	M	L
A.	HEATHER GREY					
B.	SEAFOAM GREEN					

COLLECTION III

KIM KNIT PUFFER VEST

221810008

- Feminine fit knit puffer vest with quilting, zip-front closure and welt pockets
- Comes in a true indigo dyed washed knit fabric
- Features custom OBEY Mil-Spec label at hem
- SHELL: 100% Cotton; FILLING: 100% Polyester



A.

	COLOR	XXS	XS	S	M	L
A.	INDIGO					

MASCOT HOODIE CRASH N BURN

211610047

- Vintage-inspired, relaxed fit, color-blocked hoodie
- Features contrast jersey-lined hood and striped sleeve applique
- Front kanga pocket and custom Obey felted patch artwork
- 50% Polyester / 38% Cotton / 12% Rayon



A.



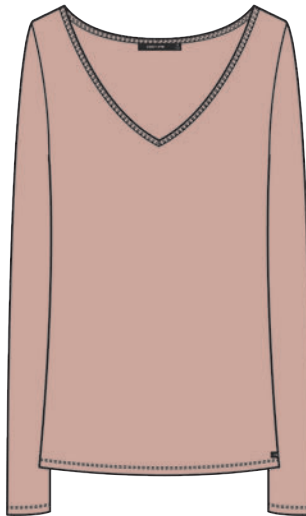
B.

	COLOR	XXS	XS	S	M	L
A.	HEATHER CHARCOAL					
B.	DARK MAROON					

COURTNEY LONG SLEEVE V

231030061

- Fitted, long sleeved V-neck
- Knitted from a delicate baby rib
- A sexy take on a '90s classic
- 65% Polyester / 35% Rayon



A.



B.

C.

D.

	COLOR	XXS	XS	S	M	L
A.	ROSE					
B.	OFF WHITE					
C.	BLACK					
D.	STONE GREY					

SPORTSWEAR

RECYCLED RUGBY

- Relaxed fit, rugby-inspired polo
- Long sleeves and color-blocked details
- Knit from 100% recycled yarns
- Features custom OBEY embroidered patch at chest
- 70% Recycled Cotton / 30% Polyester



231040000



A.

B.



	COLOR	XXS	XS	S	M	L
A.	BLACK / HEATHER GREY					
B.	HONEY GOLD / NAVY					

WESTLING MOCK NECK TANK

- Fitted mock turtleneck tank
- Cut from a wide rib knit jersey made from marled yarns
- Features sexy, narrow armholes
- Made in USA
- 50% Polyester / 50% Rayon

234050084



A.

B.



C.



D.



	COLOR	XXS	XS	S	M	L
A.	HEATHER GREY					
B.	BLACK					
C.	SPRUCE					
D.	RED					

WESTLING HENLEY

- Semi cropped, long sleeved fitted henley
- Cut from a wide rib knit jersey made from marled yarns
- Features a button front placket for a changeable neckline
- Made in USA
- 50% Polyester / 50% Rayon

231030057



A.

B.



C.



D.



	COLOR	XXS	XS	S	M	L
A.	RED					
B.	HEATHER GREY					
C.	BLACK					
D.	SPRUCE					

COLLECTION III

HUNTLEY TEE

231080053

- Relaxed fit, crewneck tee in a winter weight novelty textured jersey
- Features a custom all-over exploded houndstooth check pattern with center front OBEY logo
- A specialty layering tee with plush texture that begs to be touched
- 80% Cotton / 20% Polyester



A.

	COLOR	XXS	XS	S	M	L
A.	BLACK					

HUNTLEY SKIRT

411550049

- Fitted elastic waist knit skirt with an overlapped asymmetric hem detail
- Comes in a soft novelty textured jersey with a custom OBEY all over exploded houndstooth check pattern
- A versatile body-conscious skirt with a plush texture that begs to be touched
- CENTER BACK LENGTH: 22"
- 80% Cotton / 20% Polyester



A.

	COLOR	XXS	XS	S	M	L
A.	BLACK					

MALICE SKIRT

411550047

- A-line fit, button-front mini skirt with patch pockets and belt loops
- Cut in a midweight sateen that has a soft luster, can be worn dressed up or down
- CENTER BACK LENGTH: 16 1/2"
- 100% Polyester



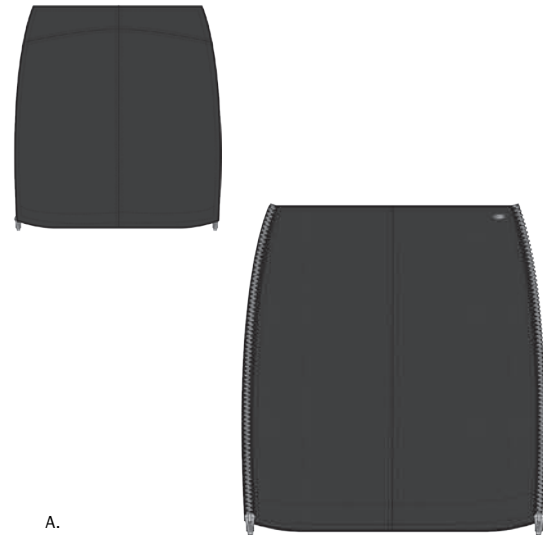
A.

	COLOR	24	25	26	27	28	29	30	31	32
A.	COFFEE									
B.	NAVY									

BILLIE VEGAN LEATHER SKIRT

411550045

- Fitted vegan leather mini skirt comes fully lined with custom printed hand-drawn art
- Features chunky, moto-inspired metal zippers along the sides
- CENTER BACK LENGTH: 14"
- SHELL: 100% PU; LINING: 100% Polyester



A.

	COLOR	24	25	26	27	28	29	30	31	32
A.	BLACK									

SPORTSWEAR



Kim Knit Puffer Vest / Welner Flannel Zip Up / Slasher Skinny Jean

COLLECTION III

BEX SHIRT DRESS

401500140

- Classic fit, button-down shirt dress with chest pocket
- Comes in a borrowed-from-the-boys speckled flannel and a soft flannel plaid
- 100% Cotton



	COLOR	XXS	XS	S	M	L
A.	RED MULTI					
B.	HEATHER CHARCOAL					

PIN-UP SARRA DRESS

406350002

- Relaxed fit long sleeved dress
- Cut from the softest, most luxurious hacci jersey
- Features a high slit neckline and custom OBEY art pins at upper chest
- 62% Polyester / 33% Rayon / 5% Spandex



	COLOR	XXS	XS	S	M	L
A.	HEATHER GREY					
B.	DUSK					

RILEY RAGLAN DRESS

401500148

- Relaxed fit raglan tee dress
- Features a seamed dolman shape armhole with long sleeves
- Fits straight through body and falls just below the knee
- Let the lounging begin!
- 95% Modal / 5% Spandex



	COLOR	XXS	XS	S	M	L
A.	OATMEAL STRIPE					
B.	HEATHER CHARCOAL					
C.	CHARCOAL STRIPE					

SPORTSWEAR

KIM CARGO SLIMS

242000048

- Elastic waist, knit cargo pants fit slim in the legs and are slightly relaxed in the rise
- Comes in a true indigo dyed washed knit fabric
- OBEY Mil-Spec label above back pocket
- RISE: 10 1/2"; LEG OPENING: 10"; INSEAM: 27"
- 100% Cotton



	COLOR	XXS	XS	S	M	L
A.	INDIGO					

THE NEMESIS JEAN

242010033

- Low-rise rigid destroy effect five pocket denim with an ankle length inseam
- Relaxed fit through the thigh with a tapered leg opening
- Features custom OBEY patches on the Washed Indigo colorway
- RISE: 9 1/2"; LEG OPENING: 14"; INSEAM: 29"
- 100% Cotton

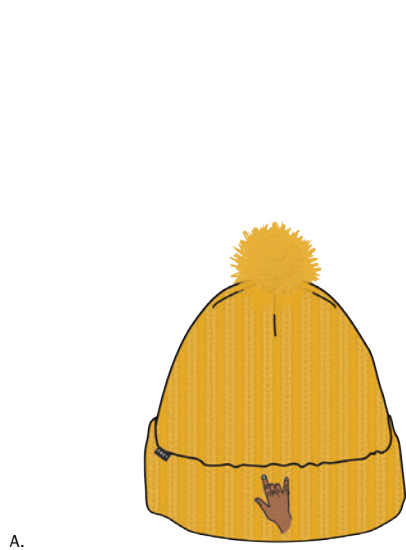


	COLOR	24	25	26	27	28	29	30	31	32
A.	WASHED INDIGO									
B.	BLACK									

SIGNING OFF BEANIE

200030069

- Chunky rib sweater knit beanie with pompom
- Features custom OBEY 'Sign Language' patch at center front
- 100% Acrylic



	COLOR	O/S				
A.	HONEY GOLD					
B.	BLACK					

LAWNDALE HAT

200140067

- Half seam, sloppy fit women's hat with metal compression clip at back
- Winter weight, wool blended fabrication in the most beautiful wintery colors
- Fashion OBEY label at center crown and back closure
- BODY: 50% Wool / 50% Polyester; TRIM: 100% Polyester



	COLOR	O/S				
A.	ARMY					
B.	HEATHER GREY					
C.	MOROCCAN BLUE					

ACCESSORIES

DOPE PATCHES TOTE BAG

200010131

- Sturdy canvas carry-all tote bag with exterior pocket and contrast black trimming
- Comes all 'Patched' up with assorted custom OBEY patches and pins
- Perfect for traveling, commuting or even trips to your local farmers market
- 100% Cotton



A.

	COLOR	O/S				
A.	NATURAL					

JAVOR BACKPACK

200010125

- Classic backpack with front zip pocket and custom OBEY enamel rose pin
- Comes in a custom camo print and tonal OBEY name tossed throughout, features additional OBEY woven fashion label at front and mil spec label at side panel
- Padded shoulder straps with adjustable webbing and interior padded laptop pocket
- BODY: 100% Polyester ; LINING: 100% Polyester; TRIM: 100% PU; WEBBING: 100% Polyester



A.

	COLOR	O/S				
A.	CAMO					

JAVOR WEEKENDER

200010124

- Roomy and compactable duffel bag
- Comes in a custom camo print with tonal OBEY name tossed throughout, features additional OBEY woven fashion label at front and mil spec label at side panel
- Strong webbing handles with suede handle and additional removeable shoulder strap
- BODY: 100% Polyester; LINING: 100% Polyester; WEBBING: 100% Polyester; TRIM: 100% Faux Suede



A.

	COLOR	O/S				
A.	CAMO					

JAVOR SLING BAG

200010123

- Sling bag fanny pack with double zip entry pockets
- Comes in a custom camo print with tonal OBEY name tossed throughout, features additional OBEY enamel rose pin and woven fashion label at front
- Strong webbing belt with adjustable buckle clasp closure
- BODY: 100% Polyester; LINING: 100% Polyester; WEBBING: 100% Polyester; TRIM: 100% Faux Suede



A.

	COLOR	O/S				
A.	CAMO					

ACCESSORIES

VERNON BEANIE

- Our best selling Vernon beanie is back in updated Holiday colors
- OBEY fashion patch label at center front cuff
- 100% Acrylic

200030008

LINDEN BEANIE

- Soft and chunky rib knit beanie in a variety of classic and pop Holiday colors
- OBEY fashion clamp label at rolled cuff edge
- 100% Acrylic

200030052



	COLOR	O/S				
A.	SAND					
B.	HEATHER GREY					
C.	BLACK					
D.	SEAFOAM GREEN					



	COLOR	O/S				
A.	PALE MAUVE					
B.	BONE					
C.	BLACK					
D.	MOROCCAN BLUE					

OBEY CITY KILLS SOCK

- Midweight ribbed mid-calf socks
- Custom OBEY City Kills jacquard art set in a varsity stripe
- 75% Cotton / 23% Polyester / 2% Spandex

200260037

HUNTLEY SOCK

- Soft winter weight boot sock with reinforced heel and toe
- Custom OBEY houndstooth pattern with logo
- 79% Cotton / 19% Nylon / 2% Spandex

200260039



	COLOR	O/S				
A.	BURGUNDY MULTI					
B.	BLACK MULTI					



	COLOR	O/S				
A.	DARK SLATE					
B.	BLACK					
C.	PINK					

ACCESSORIES

SMALL TALK PIN

- OBEY small talk pin with gold alloy finish enamel colored metal
- 2 locking backs to keep pin in place
- 100% Alloy

100220020

OBEY LEGS PIN

- OBEY legs pin with gold alloy finish enamel colored metal
- 2 locking backs to keep pin in place
- 100% Alloy

100220021



A.

A.

	COLOR	O/S				
A.	BLACK					

	COLOR	O/S				
A.	RED					

O.B.E.Y. PIN

- OBEY pin with silver alloy finish enamel colored metal
- 2 locking backs to keep pin in place
- 100% Alloy

100220022

CHERRY PIN

- OBEY Cherry pin with alloy finish enamel colored metal
- 2 locking backs to keep pin in place
- 100% Alloy

100220019



A.

A.

	COLOR	O/S				
A.	BLACK					

	COLOR	O/S				
A.	RED					

ACCESSORIES

CREEPER PIN

- OBEY Creeper pin with alloy finish enamel colored metal
- 2 locking backs to keep pin in place
- 100% Alloy

100220013

TEAR DROP PIN

- OBEY Tear Drop pin with alloy finish enamel colored metal
- 2 locking backs to keep pin in place
- 100% Alloy

100220014



A.

	COLOR	O/S				
A.	WHITE					



A.

	COLOR	O/S				
A.	RED					

WHEELS PIN

- OBEY Wheels pin with alloy finish enamel colored metal
- 2 locking backs to keep pin in place
- 100% Alloy

100220015

LIFE IS HELL PIN

- OBEY Life is Hell pin with alloy finish enamel colored metal
- 2 locking backs to keep pin in place
- 100% Alloy

100220016



A.

	COLOR	O/S				
A.	BLACK					



A.

	COLOR	O/S				
A.	BLACK					

JACKETS - 2218



DIABLO LEATHER JACKET
221800158 / PAGE 14



PATTI COAT
221800160 / PAGE 14



JAGGER TRENCH COAT
221800161 / PAGE 14



EASY RIDER TRENCH
221800157 / PAGE 14



KARINA COAT
221800164 / PAGE 15



KARINA BOMBER JACKET
221800162 / PAGE 15



NOMADS JACKET
221800144 / PAGE 30



BERINGBRIDGE PARKA
221800148 / PAGE 30



RIDGEFIELD JACKET
221800150 / PAGE 30



ARCTIC SHERPA MOTO
211800008 / PAGE 30



ARCTIC SHERPA ZIP-UP
211800007 / PAGE 30



SLACKER VIBES JACKET
221800165 / PAGE 25



SADIE SATIN JACKET
221800146 / PAGE 30



BILLIE VEGAN
221800155 / PAGE 44



SAXON PARKA
221800143 / PAGE 44



STRYKER JACKET
221800156 / PAGE 44



BOWIE SHERPA JKT
221800154 / PAGE 44



VACANCY VARSITY JKT
221800163 / PAGE 45



HOOLIGAN NITE BOMBER
221800166 / PAGE 45



ALPS HOODIE
221800110 / PAGE 45

SWEATERS - 2510



SHERPA FLYNT WRAP
251010031 / PAGE 15



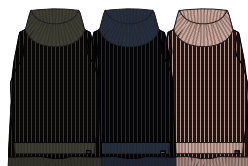
NO.89 V-NECK
251000054 / PAGE 16



NO.89 CARDIGAN
251000030 / PAGE 16



COVERT SWEATER CREW
251000053 / PAGE 19



COVERT SWEATER TURTLENECK
251000055 / PAGE 19



ELMSWORTH SWEATER COAT
251010029 / PAGE 32



EIRENE SWEATER JACKET
251010026 / PAGE 32



FREJA CABLE CREW
251000051 / PAGE 32

SPECIALTY FLEECE - 2116



NO.89 CLASSIC CREWNECK
211600084 / PAGE 16



KARLY PULLOVER FLEECE
211620029 / PAGE 32



WASSON HOODIE ART DEPT
211610046 / PAGE 34



MASCOT HOODIE
211610047 / PAGE 48



COMFY CREATURES CREW
211600082 / PAGE 47



COMFY CREATURES PULLOVER
211610045 / PAGE 47



PATCHED COMFY CREATURES CREW
2211600083 / PAGE 47

WOVENS - 2211/2812



AMANDA BOMBER BLOUSE
221160003 / PAGE 15



NO.89 BUTTON-DOWN
281200073 / PAGE 16



AMMALYN BUTTON-DOWN
281200075 / PAGE 20



AMANDA BUTTON-DOWN
281200078 / PAGE 20



HEART NOIR SHIRT
281200075 / PAGE 20



JUST KIDS SHIRT
281200027 / PAGE 35



GARRISON BUTTON-DOWN
281200076 / PAGE 35



SWANSON BUTTON-DOWN
281200074 / PAGE 35



ERIE BUTTON-DOWN
281200077 / PAGE 35



WELNER FLANNEL ZIP-UP
221160004 / PAGE 45

KNITS - 2310/2218



SOPHIA TURTLENECK
231030060 / PAGE 19



SOPHIA CAMI
234050086 / PAGE 19



ATHENA POLO
231090000 / PAGE 34



AMAYA V-NECK TOP
231030062 / PAGE 34



KIM KNIT PUFFER VEST
221810008 / PAGE 48



COURTNEY LONG SLEEVE V
231030061 / PAGE 48



RECYCLED RUGBY
231040000 / PAGE 49



WESTLING MOCK NECK TANK
234050084 / PAGE 49



WESTLING HENLEY
231030057 / PAGE 49



HUNTLEY TEE
231080053 / PAGE 50

DRESSES - 4015/ ROMPERS - 2721



AMANDA SLIP DRESS
401500145 / PAGE 21



JOAN STRAP BACK DRESS
401500150 / PAGE 21



AMMALYN SHIRT DRESS
401500147 / PAGE 21



HANNA MOCK NECK DRESS
401500144 / PAGE 21



SARAH ROMPER
272140011 / PAGE 36



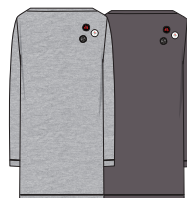
SARAH DRESS
401500146 / PAGE 36



ZOEY CUT-OUT DRESS
401500149 / PAGE 36



BEX SHIRT DRESS
401500010 / PAGE 52



PIN-UP SARRA DRESS
406350002 / PAGE 52



RILEY RAGLAN DRESS
401500148 / PAGE 52

SKIRTS - 4115



HEART NOIR SKIRT
411550043 / PAGE 20



AMMALYN SKIRT
411550048 / PAGE 23



JULIA SWEATER SKIRT
411550046 / PAGE 23



HUNTLEY SKIRT
411550049 / PAGE 50



MALICE SKIRT
411550047 / PAGE 50

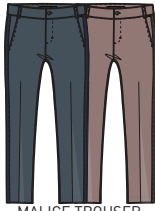


BILLIE VEGAN LEATHER SKIRT
411550045 / PAGE 50

PANTS - 2420



JAGGER SUSPENDERS
242020023 / PAGE 23



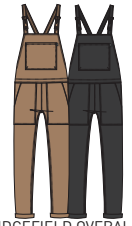
MALICE TROUSER
242020024 / PAGE 23



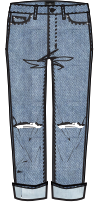
SLASHER SKINNY JEAN
242010031 / PAGE 24



SARAH TROUSER
242000047 / PAGE 36



RIDGEFIELD OVERALLS
242020022 / PAGE 37



SUNDAYS STRAIGHT LEG
242010032 / PAGE 37



ZOEY LEGGINGS
242050005 / PAGE 37



SWEET & VICIOUS SET
242020023 / PAGE 37



KIM CARGO SLIMS
242000048 / PAGE 53



THE NEMESIS JEAN
242010033 / PAGE 53

SMALL LEATHER AX & BAGS



JETT CLUTCH
200010129 / PAGE 27



JETT ZIP AROUND WALLET
200310018 / PAGE 27



JETT ID WALLET
200310017 / PAGE 27



KLEID BACKPACK
200010120 / PAGE 39



KLEID CARRY-ALL
200010121 / PAGE 39



KLEID MINI CLUTCH
200010122 / PAGE 39



KLEID SLING BAG
200010130 / PAGE 39



DOPE PATCHES TOTE
200010131 / PAGE 54



JAVOR BACKPACK
200010125 / PAGE 54



JAVOR WEEKENDER
200010124 / PAGE 54



JAVOR SLING BAG
200010123 / PAGE 54

HEADWEAR



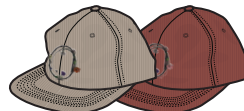
MADLINE HAT
2000540000 / PAGE 24



HARDY CAP II
200140069 / PAGE 40



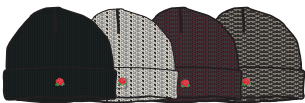
COVERT HAT
200140071 / PAGE 24



OH FLORA HAT
200140072 / PAGE 40



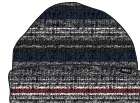
LAWNDALE HAT
200140067 / PAGE 53



ROSE HILL BEANIE
200030066 / PAGE 26



HARLOW BEANIE
200030067 / PAGE 26



DONOVAN BEANIE
200030070 / PAGE 26



ARCADIA BEANIE
200030013 / PAGE 26



FREJA CABLE POM BEANIE
200030064 / PAGE 40



SIGNING OFF BEANIE
200030069 / PAGE 53



VERNON BEANIE
200030008 / PAGE 55



LINDEN BEANIE
200030052 / PAGE 55



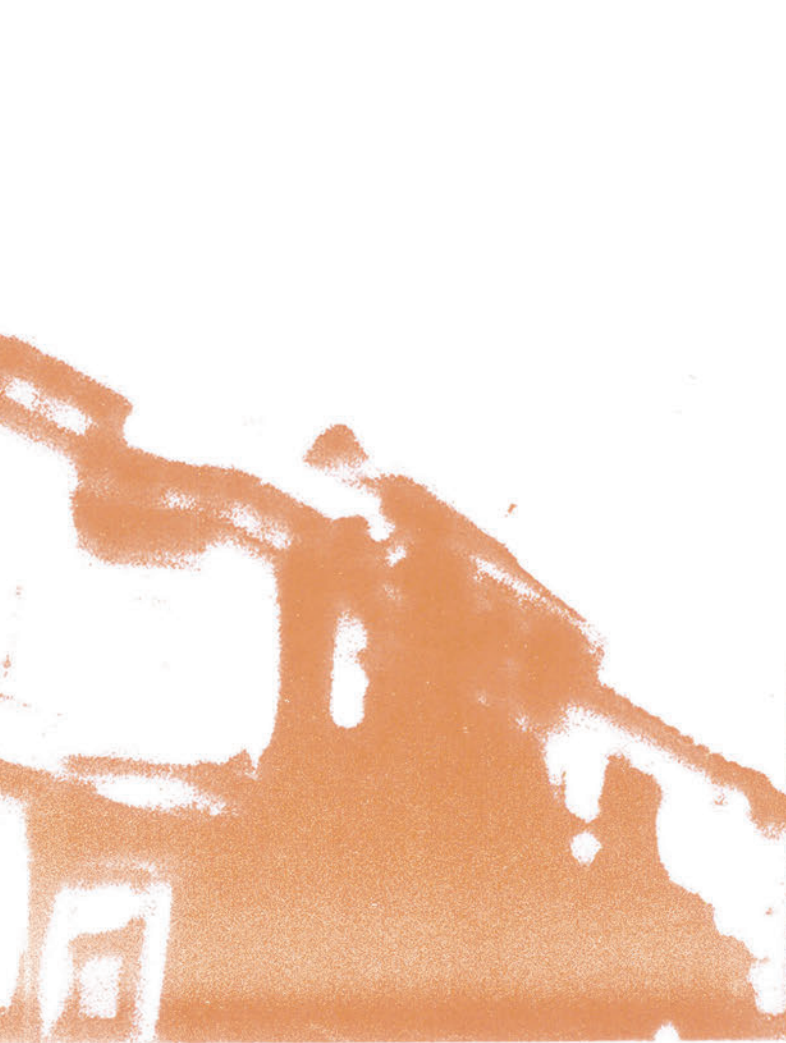
JULIA SOCK
200260040 / PAGE 24



OBEY CITY KILLS SOCK
200260037 / PAGE 55

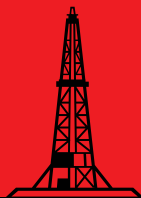


HUNTLEY SOCK
200260039 / PAGE 55



STOP FUNDING FOSSILS

DON'T LET MONEY FUEL THE CLIMATE CRISIS



[350.ORG](https://350.org)



[#DIVEST](https://www.instagram.com/divest)



DIVEST FROM

FOSSIL FUELS



OBEY AWARENESS:
350.ORG
 DON'T LET MONEY FUEL THE CLIMATE CRISIS

The number 350 means climate safety: to preserve a livable planet, scientists tell us we must reduce the amount of CO2 in the atmosphere from its current level of 400 parts per million to below 350 ppm.

We believe that a global grassroots movement can hold our leaders accountable to the realities of science and the principles of justice. That movement is rising from the bottom up all over the world, and is uniting to create the solutions that will ensure a better future for all. 350.org was founded by a group of university friends in the U.S. along with author Bill McKibben, who wrote one of the first books on global warming for the general public.

When we started organizing in 2008, we saw climate change as the most important issue facing humanity — but climate action was mired in politics and all but stalled. We didn't know how to fix things, but we knew that one missing ingredient was a climate movement that reflected the scale of the crisis.

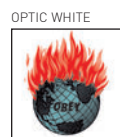
So we started organizing coordinated days of action that linked activists and organizations around the world, including the International Day of Climate Action in 2009, the Global Work Party in 2010, Moving Planet in 2011, and Climate Impacts Day in 2012. We held the "world's biggest art installation" and "the most widespread day of political action in the planet's history." We figured that if we were going to be a movement, then we had to start acting like one.

Today, 350.org works in almost every country in the world on campaigns like fighting coal power plants in India, stopping the Keystone XL pipeline in the U.S, and divesting public institutions everywhere from fossil fuels. All of our work leverages people power to dismantle the influence and infrastructure of the fossil fuel industry, and to develop people-centric solutions to the climate crisis.

For more information, visit their website: <http://350.org/>

350.ORG AWARENESS TEE 265260953

SHIPPED BY COLOR	XXS:	XS:	S:	M:	L:
------------------	------	-----	----	----	----



HEATHER GREY

OBEY
 AWARENESS

OBEY AWARENESS WAS FOUNDED IN 2007 AS A WAY TO EDUCATE AND FUNDRAISE FOR CAUSES AND ORGANIZATIONS OBEY SUPPORTS. IT IS A UNIQUE PROGRAM IN THAT IT CONSTANTLY EVOLVES TO SUPPORT IMPORTANT EMERGING ISSUES AND ORGANIZATIONS. EACH SEASON THE OBEY CLOTHING LINE FEATURES DEDICATED PRODUCT TO RAISE FUNDS FOR THESE CAUSES. ALL PROFITS GENERATED FROM THE SALE OF OBEY AWARENESS PRODUCT ARE DONATED TO THE CAUSE AT HAND. WE ENCOURAGE YOU TO LEARN MORE AND MAKE A DIFFERENCE.

DELANCEY CREWS

Boxy crew neck fleece. Features an oversized fit, dropped shoulder with rib cuffs and neckband.
Cut in a soft brush back fleece with a custom wash treatment. Made in USA
52% Cotton / 48% Polyester



DELANCEY CREWS

EDGE OF DESTRUCTION

212410983

SHIPPED BY COLOR	XXS:	XS:	S:	M:	L:
------------------	------	-----	----	----	----

NAVY



HEATHER STONE

OBEY WORLDWIDE QUALITY DISSENT

212410981

SHIPPED BY COLOR	XXS:	XS:	S:	M:	L:
------------------	------	-----	----	----	----

DARK MAROON



NAVY

SINCERELY, WOMEN

212410980

SHIPPED BY COLOR	XXS:	XS:	S:	M:	L:
------------------	------	-----	----	----	----

GREY



DARK MAROON

VACANT YOUTH

212410979

SHIPPED BY COLOR	XXS:	XS:	S:	M:	L:
------------------	------	-----	----	----	----

HEATHER STONE



GREY

CAMDEN CREWS

Relaxed fit, vintage-inspired pullover crew neck sweater. Cut from a soft and cozy brushed back fleece.
Features a unique vintage dye technique.
80% Polyester / 20% Cotton



CAMDEN CREWS

ALL WORK

212290973

SHIPPED BY COLOR	XXS:	XS:	S:	M:	L:
------------------	------	-----	----	----	----



DUSTY TAN

CULT PHENOM

212290972

SHIPPED BY COLOR	XXS:	XS:	S:	M:	L:
------------------	------	-----	----	----	----



DUSTY PINK

DUSTY TAN



PEACE FLYER

212290993

SHIPPED BY COLOR	XXS:	XS:	S:	M:	L:
------------------	------	-----	----	----	----

DUSTY GOLD OAK



DUSTY SAGE

MASCOT HOODIES

Vintage inspired, relaxed fit hoodie. Slightly shrunken through body, with novelty colorblocked raglan piping, hood lining, sleeve taping and jersey lined hood.
50% Polyester / 38% Cotton/ 12% Spandex



PEOPLE'S DISCONTENT

212400991

SHIPPED BY COLOR	XXS:	XS:	S:	M:	L:
------------------	------	-----	----	----	----



DUSTY BLUE

QUALITY DISSENT PROPAGANDA

212400992

SHIPPED BY COLOR	XXS:	XS:	S:	M:	L:
------------------	------	-----	----	----	----



MAROON



HEATHER CHARCOAL



DUSTY BLUE



WASSON HOODIES

Oversized pullover hoodie with a slight bell sleeve. Cut from a soft, heathered French terry, featuring side panels and raw-edge details. Raw-cut sleeves are designed to be worn down and drapy or rolled up to the elbow. Made in USA
59% Cotton / 36% Polyester / 5% Rayon



CHAOS 212271012

SHIPPED BY COLOR	XS/S:	M/L:
------------------	-------	------

INTO THE VOID 212271000

SHIPPED BY COLOR	XS/S:	M/L:
------------------	-------	------

HEATHER GREY



CHILI PEPPER



HEATHER GREY

L'ESPRIT DE LA LIBERTE CREWS

Slightly shrunken fit crew neck with wide rib details. Cut from a mid-weight, premium French terry for a clean and classic look
SOLID COLORS: 80% Cotton / 20% Polyester; HEATHER GREY: 55% Cotton / 45% Polyester



L'ESPIRIT DE LA LIBERTE CREWS

THE PEOPLE'S DISCONTENT

212280976

SHIPPED BY COLOR	XXS:	XS:	S:	M:	L:
------------------	------	-----	----	----	----

WHITE



HEATHER GREY

OBEY NEON

212280977

SHIPPED BY COLOR	XXS:	XS:	S:	M:	L:
------------------	------	-----	----	----	----

WHITE



BLACK

OBEY ART DEPARTMENT

212280978

SHIPPED BY COLOR	XXS:	XS:	S:	M:	L:
------------------	------	-----	----	----	----

HEATHER GREY



MARSALA

L'ESPRIT DE LA LIBERTE HOODIES

Relaxed fit pullover hoodie with wide rib details and a front kangaroo pocket. Cut from a mid-weight, premium French terry for a clean and classic look

SOLID COLORS: 80% Cotton / 20% Polyester; HEATHER GREY: 55% Cotton / 45% Polyester



FRESH OFF PRESS

212390974

SHIPPED BY COLOR	XXS:	XS:	S:	M:	L:
------------------	------	-----	----	----	----

OBEY LO-FI

212390975

SHIPPED BY COLOR	XXS:	XS:	S:	M:	L:
------------------	------	-----	----	----	----

BLACK



HEATHER GREY



BLACK



HEATHER GREY





LOFTY CREWS

Relaxed fit, crew neck raglan sleeve sweater. Cut from lofty, medium weight tri-blend fleece. Features ribbed side panels, exaggerated waistband ribbing with novelty notches and a slightly longer back
50% Polyester / 38% Cotton / 12% Rayon



LOFTY CREWS

FALLEN ANGELS

212340986

SHIPPED BY COLOR	XXS:	XS:	S:	M:	L:
------------------	------	-----	----	----	----

HEATHER NAVY



HEATHER DARK MAROON



HEATHER TAUPE

OBHEY GREEN POWER

212340987

SHIPPED BY COLOR	XXS:	XS:	S:	M:	L:
------------------	------	-----	----	----	----

HEATHER GREY



HEATHER DARK MAROON



HEATHER NAVY

OIL EAGLE

212340988

SHIPPED BY COLOR	XXS:	XS:	S:	M:	L:
------------------	------	-----	----	----	----

HEATHER NAVY



HEATHER DARK MAROON



HEATHER GREY

LOFTY CREW

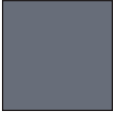
212340000

SHIPPED BY COLOR	XXS:	XS:	S:	M:	L:
------------------	------	-----	----	----	----

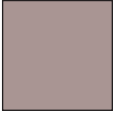
HEATHER GREY



HEATHER NAVY



HEATHER TAUPE



HEATHER DARK MAROON

LOFTY PULLOVER HOODIES

Relaxed fit, raglan sleeve hoodie. Cut from lofty, medium weight tri-blend fleece. Features front kanga pocket, ribbed side panels, waistband ribbing with novelty notches and a slightly longer back
50% Polyester / 38% Cotton / 12% Rayon



LOFTY PULLOVER HOODIES

OBEY BEER ME

212350985

SHIPPED BY COLOR	XXS:	XS:	S:	M:	L:
------------------	------	-----	----	----	----

HEATHER GREY



HEATHER NAVY

ENJOY THE RIOT

212350984

SHIPPED BY COLOR	XXS:	XS:	S:	M:	L:
------------------	------	-----	----	----	----



HEATHER GREY

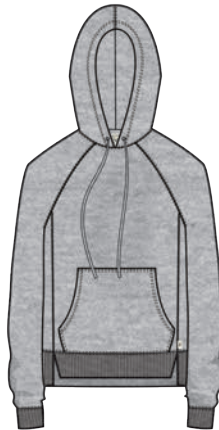


LOFTY PULLOVER HOODIE

212350000

SHIPPED BY COLOR	XXS:	XS:	S:	M:	L:
------------------	------	-----	----	----	----

HEATHER NAVY



HEATHER GREY

SALVAGE LONG SLEEVE TEES
 Relaxed fit, boyfriend-inspired long sleeved crew neck tee
 100% Cotton



GRIM ROSES 265831007

SHIPPED BY COLOR	S:	M:	L:
------------------	----	----	----

SUBLIMINAL VISUAL 265831006

SHIPPED BY COLOR	S:	M:	L:
------------------	----	----	----

WHITE



CHARCOAL



GREY





THROWBACK THERMAL RAGLANS

Slightly fitted, long raglan sleeved tee. Cut from a classic waffle knit thermal with custom dye techniques for the perfect dusty hue. A great Fall transition piece for any wardrobe
50% Cotton / 50% Polyester



THROWBACK THERMAL RAGLANS

PEACE FLYER

266320993

SHIPPED BY COLOR	XXS:	XS:	S:	M:	L:
------------------	------	-----	----	----	----

DUSTY BLACK



DUSTY TAUPE

RIOTS NOT DIETS

266321008

SHIPPED BY COLOR	XXS:	XS:	S:	M:	L:
------------------	------	-----	----	----	----

DUSTY TAUPE



DUSTY DARK SLATE

SAY NOTHING

266321005

SHIPPED BY COLOR	XXS:	XS:	S:	M:	L:
------------------	------	-----	----	----	----



DUSTY STONE GREY

THROWBACK THERMAL RAGLAN

266320000

SHIPPED BY COLOR	XXS:	XS:	S:	M:	L:
------------------	------	-----	----	----	----

DUSTY STONE GREY



DUSTY TAUPE



DUSTY DARK SLATE



DUSTY BLACK

MAXWELL LONG SLEEVE TEES

Relaxed fit, boxy tee. Features drop shoulders and fitted sleeves. Cut from a delicate, lightweight knit.
100% Cotton



MAXWELL LONG SLEEVE TEES

EDGE OF DESTRUCTION

266490983

SHIPPED BY COLOR	XXS:	XS:	S:	M:	L:
------------------	------	-----	----	----	----

DARK MAROON



BLACK

GIMME DANGER

266491014

SHIPPED BY COLOR	XXS:	XS:	S:	M:	L:
------------------	------	-----	----	----	----

WHITE



DARK MAROON

VACANT YOUTH

266490979

SHIPPED BY COLOR	XXS:	XS:	S:	M:	L:
------------------	------	-----	----	----	----



WHITE

MAXWELL LONG SLEEVE

266490000

SHIPPED BY COLOR	XXS:	XS:	S:	M:	L:
------------------	------	-----	----	----	----

DARK MAROON



WHITE



BLACK



SPRUCE

CHARLIE FITTED LONG SLEEVE TEES

Sexy, fitted long sleeve style with novelty cut out details at raglan seams. Side seams contour natural waist.
95% Rayon / 5% Spandex



CHARLIE FITTED LONG SLEEVE TEES

100 PROOF

266481016

SHIPPED BY COLOR	XXS:	XS:	S:	M:	L:
------------------	------	-----	----	----	----



BLACK MULTI

BOTTOMS UP

266481017

SHIPPED BY COLOR	XXS:	XS:	S:	M:	L:
------------------	------	-----	----	----	----



OFF WHITE

CRESCENT MOON

266481019

SHIPPED BY COLOR	XXS:	XS:	S:	M:	L:
------------------	------	-----	----	----	----

BLACK MULTI



OFF WHITE



BLACK

OBEY LO-FI

266480975

SHIPPED BY COLOR	XXS:	XS:	S:	M:	L:
------------------	------	-----	----	----	----



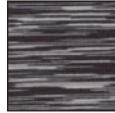
BLACK

CHARLIE FITTED LONG SLEEVE

266480000

SHIPPED BY COLOR	XXS:	XS:	S:	M:	L:
------------------	------	-----	----	----	----

BLACK MULTI



OFF WHITE



BLACK

HANNA LONG SLEEVE TEES

Body skimming, lightweight long sleeve tee. Cut from a drapery rayon blend jersey with a sexy, open neckline. Comes in solids and microstripe colors. Made in USA
50% Polyester / 50% Rayon



HANNA LONG SLEEVE TEES

CHAOS

266471012

SHIPPED BY COLOR	XXS:	XS:	S:	M:	L:
------------------	------	-----	----	----	----

IRON



BLACK

PEOPLES DISCONTENT

266470991

SHIPPED BY COLOR	XXS:	XS:	S:	M:	L:
------------------	------	-----	----	----	----



IRON

PREMIUM DISSENT

266471013

SHIPPED BY COLOR	XXS:	XS:	S:	M:	L:
------------------	------	-----	----	----	----

SAGE



MAUVE

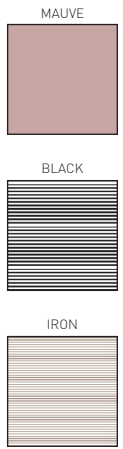
HANNA LONG SLEEVE

266470000

SHIPPED BY COLOR	XXS:	XS:	S:	M:	L:
------------------	------	-----	----	----	----



SAGE



MAUVE

BLACK

IRON

ALEXA LONG SLEEVE MOCK NECKS

Fitted, mock turtle neck. Flattering side seams contour natural waist fit. Available in stripe and solids. Made in USA
SOLIDS: 92% Rayon / 8% Spandex; STRIPE: 48% Polyester / 48% Rayon / 4% Spandex



ALEXA LONG SLEEVE MOCK NECKS

OBEY JUMBLE

266460995

SHIPPED BY COLOR	XXS:	XS:	S:	M:	L:
------------------	------	-----	----	----	----

BLACK



WHITE

OBEY LEGS

266461018

SHIPPED BY COLOR	XXS:	XS:	S:	M:	L:
------------------	------	-----	----	----	----

BLACK



HEATHER CHARCOAL

TYPEWRITER

266461015

SHIPPED BY COLOR	XXS:	XS:	S:	M:	L:
------------------	------	-----	----	----	----

WHITE



BLACK

ALEXA LONG SLEEVE MOCK NECK

266460000

SHIPPED BY COLOR	XXS:	XS:	S:	M:	L:
------------------	------	-----	----	----	----

BLACK



HEATHER CHARCOAL



WHITE



BLACK MULTI

SOLD OUT RAGLANS

Traditional, boyfriend fit raglan sleeve tee. This style features a multi-step wash treatment that offers the softest, most worn-in results. Combined with contrast color-blocked details and novelty print techniques for a truly unique piece
52% Cotton / 48% Polyester



SOLD OUT RAGLANS

CRASH AND BURN 265441004

SHIPPED BY COLOR	XXS:	XS:	S:	M:	L:
------------------	------	-----	----	----	----

CREME / BLACK



BLACK / PORT ROYALE

INTO THE VOID

265441000

SHIPPED BY COLOR	XXS:	XS:	S:	M:	L:
------------------	------	-----	----	----	----

SKY BLUE / BLACK



LIGHT PINK / PORT ROYALE

LONG LIVE ROCK AND ROLL

265441001

SHIPPED BY COLOR	XXS:	XS:	S:	M:	L:
------------------	------	-----	----	----	----

LIGHT PINK / PORT ROYALE



BRICK / PORT ROYALE
*Flocking

OIL EAGLE

265440988

SHIPPED BY COLOR	XXS:	XS:	S:	M:	L:
------------------	------	-----	----	----	----

BLACK / PORT ROYALE



CREME / BLACK

SOLD OUT RAGLAN

265440000

SHIPPED BY COLOR	XXS:	XS:	S:	M:	L:
------------------	------	-----	----	----	----

BLACK / PORT ROYALE



LIGHT PINK / PORT ROYALE



CREME / BLACK



BRICK / PORT ROYALE



SKY BLUE / BLACK

SOLD OUT RINGER TEES

Slightly fitted ringer tee inspired by a retro '70s classic. This style features a multi-step wash treatment that offers the softest, most worn-in results
Combined with contrast ringer details and novelty print techniques for a truly unique piece
52% Cotton / 48% Polyester



SOLD OUT RINGER TEES

QUALITY DISSENT PROPAGANDA 265710992

SHIPPED BY COLOR	XXS:	XS:	S:	M:	L:
------------------	------	-----	----	----	----

SKY BLUE / STORMY SEA



BRICK / PORT ROYALE
*Puff print

RIOT GIRL 265710989

SHIPPED BY COLOR	XXS:	XS:	S:	M:	L:
------------------	------	-----	----	----	----

LEMON / PORT ROYALE



CREME / BLACK

RIOTS NOT DIETS 265711008

SHIPPED BY COLOR	XXS:	XS:	S:	M:	L:
------------------	------	-----	----	----	----

CREME / BLACK



LEMON / PORT ROYALE

SOLD OUT RINGER 265710000

SHIPPED BY COLOR	XXS:	XS:	S:	M:	L:
------------------	------	-----	----	----	----

BRICK / PORT ROYALE



SKY BLUE / STORMY SEA

CREME / BLACK



LEMON / PORT ROYALE



LESTER TEES

Oversized, boyfriend fit crew neck. Reminiscent of '90s band merch, this tee has been specially engineered to represent that long-loved and worn-until-dissolved look. Featuring destroyed edging details and a color faded effect with novelty front and back print techniques.
100% Cotton



LESTER TEES

INTO THE VOID

266341000

SHIPPED BY COLOR	XXS:	XS:	S:	M:	L:
------------------	------	-----	----	----	----

DUSTY OFF WHITE



DUSTY STONE GREY

OIL EAGLE

266340988

SHIPPED BY COLOR	XXS:	XS:	S:	M:	L:
------------------	------	-----	----	----	----

DUSTY OFF WHITE



DUSTY BLACK

SPEAK OF

266341011

SHIPPED BY COLOR	XXS:	XS:	S:	M:	L:
------------------	------	-----	----	----	----

DUSTY BLACK



DUSTY OFF WHITE

DREE TEES

Relaxed fit, elongated tee with a slim straight fit through body. Cut from a delicate, lightweight jersey this tee is as soft and supple as a worn-in boyfriend's undershirt
100% Cotton



DREE TEES

PROGRAM YOUR MIND

266290997

SHIPPED BY COLOR	XXS:	XS:	S:	M:	L:
------------------	------	-----	----	----	----

SPRUCE



DARK MAROON

SINCERELY, WOMEN

266290980

SHIPPED BY COLOR	XXS:	XS:	S:	M:	L:
------------------	------	-----	----	----	----

WHITE



BLACK

VACANT

266290970

SHIPPED BY COLOR	XXS:	XS:	S:	M:	L:
------------------	------	-----	----	----	----



WHITE

DREE TEE

266290000

SHIPPED BY COLOR	XXS:	XS:	S:	M:	L:
------------------	------	-----	----	----	----



SPRUCE

DARK MAROON



WHITE



BLACK



DYLAN TEES

Relaxed fit, short sleeve V-neck. Cut from a lightweight nep jersey and features delicate merrow finish edges
75% Polyester / 25% Cotton



DYLAN TEES

GIMME DANGER

265781014

SHIPPED BY COLOR	XXS:	XS:	S:	M:	L:
------------------	------	-----	----	----	----

NATURAL



DARK GREY

GRIM ROSES

265781007

SHIPPED BY COLOR	XXS:	XS:	S:	M:	L:
------------------	------	-----	----	----	----

NATURAL



HEATHER BLACK

SPEAK OF

265781011

SHIPPED BY COLOR	XXS:	XS:	S:	M:	L:
------------------	------	-----	----	----	----

DARK GREY



NATURAL

DYLAN TEE

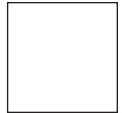
265780000

SHIPPED BY COLOR	XXS:	XS:	S:	M:	L:
------------------	------	-----	----	----	----

HEATHER BLACK



NATURAL



DARK GREY



NAVY

ROSARIO POCKET TEES

Relaxed fit pocket tee with a slightly boxy cut. Features a subtle dropped shoulder and novelty pocket prints. Cut in a hefty textured slub with a subtle vintage wash
100% Cotton



ROSARIO POCKET TEES

BEING WATCHED

266300998

SHIPPED BY COLOR	XXS:	XS:	S:	M:	L:
------------------	------	-----	----	----	----

DUSTY SAGE



DUSTY TAUPE

EAT SHIT

266300999

SHIPPED BY COLOR	XXS:	XS:	S:	M:	L:
------------------	------	-----	----	----	----

DUSTY TAUPE



DUSTY DARK SLATE

SMALL TALK

266300996

SHIPPED BY COLOR	XXS:	XS:	S:	M:	L:
------------------	------	-----	----	----	----

DUSTY MAROON



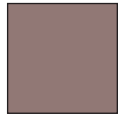
DUSTY SAGE

ROSARIO POCKET TEE

266300000

SHIPPED BY COLOR	XXS:	XS:	S:	M:	L:
------------------	------	-----	----	----	----

DUSTY TAUPE



DUSTY SAGE



DUSTY DARK SLATE



DUSTY MAROON

MICRO STRIPE AND HANNA CREW TEES

The classic crew fit with a twist. Cut from the softest jersey with a relaxed boyfriend fit. Come in solids and stripes. Made in USA
50% Polyester / 50% Rayon



SINCERELY, WOMEN

266540980

SHIPPED BY COLOR	XXS:	XS:	S:	M:	L:
------------------	------	-----	----	----	----

OBEY YOUTH

266541009

SHIPPED BY COLOR	XXS:	XS:	S:	M:	L:
------------------	------	-----	----	----	----



MAUVE



SAGE

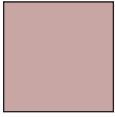
MICRO STRIPE AND HANNA CREW TEES

HANNA CREW

266540000

SHIPPED BY COLOR	XXS:	XS:	S:	M:	L:
------------------	------	-----	----	----	----

MAUVE



SAGE

ALL WORK

266380973

SHIPPED BY COLOR	XXS:	XS:	S:	M:	L:
------------------	------	-----	----	----	----

IRON



BLACK

OBEY YOUTH

266381009

SHIPPED BY COLOR	XXS:	XS:	S:	M:	L:
------------------	------	-----	----	----	----



IRON

SINCERELY, WOMEN

266380980

SHIPPED BY COLOR	XXS:	XS:	S:	M:	L:
------------------	------	-----	----	----	----



BLACK

MICRO STRIPE CREW TEE

266380000

SHIPPED BY COLOR	XXS:	XS:	S:	M:	L:
------------------	------	-----	----	----	----

BLACK



IRON

CLASSIC CREW TEES

Relaxed fit, classic crew neck tee in solids and color blocked. Features a delicate soft wash
SOLIDS: 100% Cotton; HEATHER GREY: 90% Cotton / 10% Polyester



CLASSIC CREW TEES

OBEY GREEN POWER

265260987

SHIPPED BY COLOR	XXS:	XS:	S:	M:	L:
------------------	------	-----	----	----	----

NAVY



HEATHER GREY

OBEY NEON

265260977

SHIPPED BY COLOR	XXS:	XS:	S:	M:	L:
------------------	------	-----	----	----	----

OPTIC WHITE



BLACK

VACANT YOUTH

265260979

SHIPPED BY COLOR	XXS:	XS:	S:	M:	L:
------------------	------	-----	----	----	----

HEATHER GREY



OPTIC WHITE

NAVY



SMALL TALK

266530996

SHIPPED BY COLOR	XXS:	XS:	S:	M:	L:
------------------	------	-----	----	----	----



NAVY / WHITE

GORDON CUT OFF RAGLANS

Relaxed fit cut-off raglan sleeve tank. Cut from a soft textured tri-blend slub. Features raw cut armholes and a sexy narrow shoulder with contrast color-blocked details
50% Polyester / 38% Cotton / 12% Rayon



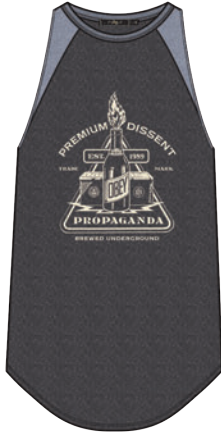
GORDON CUT OFF RAGLANS

BREWED UNDERGROUND

266220994

SHIPPED BY COLOR	XXS:	XS:	S:	M:	L:
------------------	------	-----	----	----	----

HEATHER GREY /
HEATHER BRICK



CHARCOAL / STORMY SEA

PEACE FLYER

266220993

SHIPPED BY COLOR	XXS:	XS:	S:	M:	L:
------------------	------	-----	----	----	----

STORMY SEA /
HEATHER GREY



HEATHER GREY / HEATHER BRICK

RIOT GIRL

266220989

SHIPPED BY COLOR	XXS:	XS:	S:	M:	L:
------------------	------	-----	----	----	----



STORMY SEA / HEATHER GREY

CHLOE TANKS

Sexy, fitted '90s inspired rib tank. A superbly versatile transition piece that functions with statement graphics or as the perfect underlayer
62% Polyester / 33% Rayon / 5% Spandex



CHLOE TANKS

BEER ME

266210985

SHIPPED BY COLOR	XXS:	XS:	S:	M:	L:
------------------	------	-----	----	----	----

HEATHER GREY



WHITE

EDGE OF DESTRUCTION

266210983

SHIPPED BY COLOR	XXS:	XS:	S:	M:	L:
------------------	------	-----	----	----	----

WHITE



BLACK

CHLOE TANK

266210000

SHIPPED BY COLOR	XXS:	XS:	S:	M:	L:
------------------	------	-----	----	----	----

BLACK



WHITE



HEATHER GREY