

MEN'S

COLLECTION



OBHEY

HOLIDAY

2016

THE OBEY CAMPAIGN CAN BE EXPLAINED AS AN EXPERIMENT IN PHENOMENOLOGY. THE FIRST AIM OF PHENOMENOLOGY IS TO REAWAKEN A SENSE OF WONDER ABOUT ONE'S ENVIRONMENT. THE OBEY CAMPAIGN ATTEMPTS TO STIMULATE CURIOSITY AND BRING PEOPLE TO QUESTION BOTH THE CAMPAIGN AND THEIR RELATIONSHIP WITH THEIR SURROUNDINGS. BECAUSE PEOPLE ARE NOT USED TO SEEING ADVERTISEMENTS OR PROPAGANDA FOR WHICH THE MOTIVE IS NOT OBVIOUS, FREQUENT AND NOVEL ENCOUNTERS WITH OBEY PROPAGANDA PROVOKE THOUGHT AND POSSIBLE FRUSTRATION, NEVERTHELESS REVITALIZING THE VIEWER'S PERCEPTION AND ATTENTION TO DETAIL. TO CATALYZE A THOUGHTFUL DIALOGUE DECONSTRUCTING THE PROCESS OF IMAGE ABSORPTION IS THE ULTIMATE GOAL. ALL IN THE NAME OF FUN AND OBSERVATION.

THE MEDIUM IS THE MESSAGE.



17462 VON KARMAN AVE.
IRVINE, CA 92614 U.S.A.
PHONE: 949.596.8400 / FAX: 949.596.8437
WWW.OBEYCLOTHING.COM
WWW.OBEYGIANT.COM

SALES REPRESENTATIVES

PACIFIC NORTHWEST
BURL DARDEN
64171 TUMALO RIM DRIVE
BEND, OR 97701
P: 541.385.3302 / F: 541.385.3302
E: BURL@OBEYCLOTHING.COM

LOS ANGELES
TOMMY LOVE
17462 VON KARMAN AVE.
IRVINE, CA 92614
C: 714.658.3946 / F: 714.556.2793
E: TOMMY@OBEYCLOTHING.COM

ORANGE COUNTY / SAN DIEGO
MARK MAZZA
20091 SHOREWOOD CIRCLE
HUNTINGTON BEACH, CA 92649
C: 714.614.7901 / F: 714.964.3676
E: MDMSALES@ME.COM

HAWAII / GUAM
NOEL MARCHAN
98-750 MOANALUA LOOP
AIEA, HI 96701
P: 808.676.5290
E: NMARCHAN@AOL.COM

NOR CAL, NEVADA,
ARIZONA, NEW MEXICO
JENNIFER L. ZWEIG
8161 SKYLINE BLVD.
OAKLAND, CA 94611
C: 510.388.4418
E: JLZ@OBEYCLOTHING.COM

MIDWEST
LAURA KARELS
13816 SHIRLEY DR.
BURNSVILLE, MN 55337
P: 952.461.4218 / F: 952.461.4219
E: LAURA_KARELS@YAHOO.COM

NORTHEAST / MID ATLANTIC
NICK LHOTSKY
17462 VON KARMAN AVE.
IRVINE, CA 92614
C: 443.373.3283 / P: 949.596.8400 X263
E: NICK@OBEYCLOTHING.COM

SOUTHEAST
ANDREW MERCIER
10777 BISHOPVILLE RD.
BISHOPVILLE, MD 21813
C: 443.614.4422
E: MERCIER@OBEYCLOTHING.COM

INTERNATIONAL SALES
17462 VON KARMAN AVE.
IRVINE, CA 92614 U.S.A.
P: 949.596.8400 / F: 949.596.8437
E: INTL.SALES@OBEYCLOTHING.COM

TABLE OF CONTENTS

04
FEATURE:
FRIENDS OF THE PROGRAM

10
FAIRTRADE

12
NEW THREAT USA DENIM

14
EIGHTY NINE GROUP

18
LEATHER

20
JACKETS

26
SWEATERS

30
SPECIALTY FLEECE

36
WOVENS

42
KNITS

42
SHORTS

48
PANTS

60
DENIM

66
HEADWEAR

76
ACCESSORIES

84
SOCKS

86
PINS

88
ESSENTIALS

89
P.O.P.

84
OBEY AWARENESS:
350.ORG

94
PREMIUM / BASIC TEES

108
PREMIUM RAGLANS

109
BASIC LONG SLEEVE TEES

110
PREMIUM GRAPHIC TERRY FLEECE

111
PREMIUM GRAPHIC LOFTY FLEECE

112
PREMIUM GRAPHIC PIGMENT FLEECE

113
PREMIUM GRAPHIC CREW FLEECE

114
BASIC GRAPHIC CREW FLEECE

115
BASIC GRAPHIC ZIP FLEECE

116
CLASSIC COACHES JACKETS

117
HOODED SNAP / ZIP COACHES JACKETS

119
SUPERIOR TEES

121
SUPERIOR PIGMENT TEES

122
SUPERIOR LONGSLEEVE PIGMENT TEES

125
HEATHER TRIBLEND TEES

126
SLUB TEES

127
TEE FIT GUIDES

OBEY

FRIENDS OF THE PROGRAM:



SLOW
CULTURE
LOS AN
GELES

943 N. Hill St. Los Angeles, CA 90012
www.slowculture.com

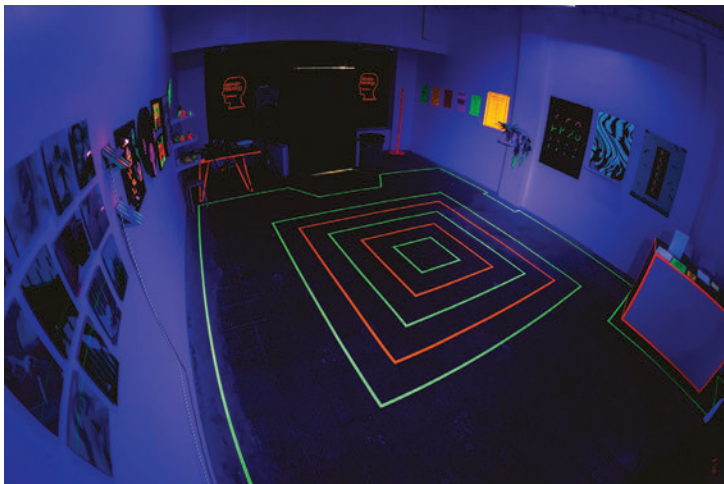
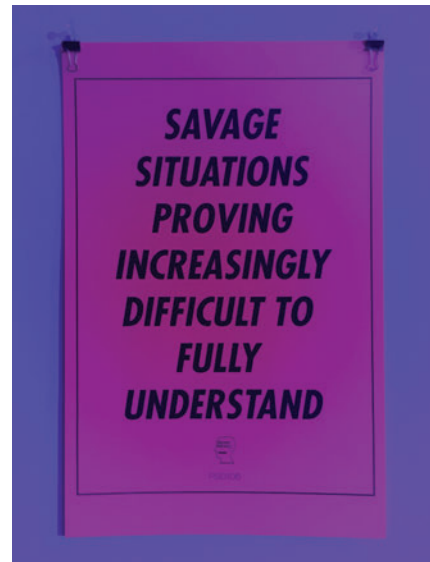
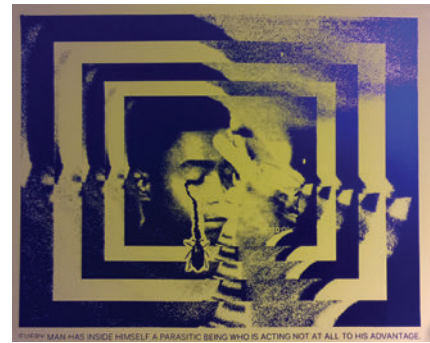
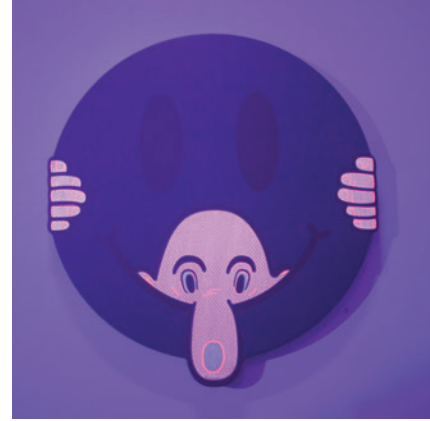
Established August 2013, Slow Culture was an independent art gallery and project space located in the historic Northeast Los Angeles neighborhood of Highland Park. As of February 2016, we have relocated to Chinatown in Los Angeles, California. Over the past three years, their concept has evolved



from their original intentions and they found a new home to pave way for our growth. From visual artists to musicians to independent publishers, their goal is to provide a platform for their creative community to showcase their work. Established as an art gallery, Slow Culture's new home will also provide artists with a workspace and studio to help foster new projects, workshops, and installations.

Here are few highlights from the past year..

LIGHTS OUT: BLACK LIGHT GROUP SHOW



Slow Culture presented "Lights Out," a black light group show & pop-up shop curated in collaboration with art collective: Brain Dead. Inspired by psychedelic artwork and underground black light culture, they gathered a diverse crossover of international artists to create all new work utilizing UV sensitive materials. Additionally, they converted the lighting in the gallery to an all black light system special for the show.

WHAT A TIME TO BE ALIVE SHOW



This collaborative show between two independently-owned and run L.A. art galleries, Sunday and Slow Culture, is meant to instigate honest and open conversation between artists and the community on social issues and current events. With the recent, ever increasing development and reach of social media, fame and awareness are more accessible. Sensations are born on the internet; some become pop stars, some just moments, and others may create movements. The ability to access more information has made a strong impact on the collective practice in the art scene. It is important for individuals, artists, organizations and brands to come together and use whatever established platforms we can access to comment on society and what we can do as a community to comprehensively seek and incite change. What A Time To Be Alive is a critique and celebration of the modern world; solidarity and political platforms through social media, the emergence and importance of contemporary pop culture, the distrust of institutions, and the instigation of meaningful conversation between all people.



HAMBURGER EYES "CYBERNETICS" SHOW



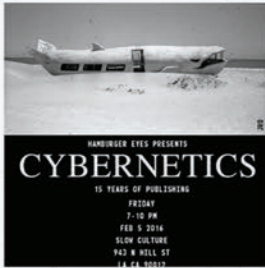
Slow Culture Gallery presents Hamburger Eyes "CYBERNETICS." A retrospective photography exhibition celebrating 15 years of independent publishing. On display will be 500+ photographs ranging from 8" x 10" to 4' x 6'. All exclusively selected for this prolific show.

ABOUT HAMBURGER EYES

Hamburger Eyes began as a small xerox copied zine and today, has grown into a world class photography magazine as well as a publisher of signature titles from various photographers from all over the globe. Publishing since 2001, they have "developed" their own signature brand of photography and provided an outlet for both upcoming and established photographers worldwide. They have produced hundreds of titles of zines, magazines, and books.



PAST SHOWS



Hamburger Eyes



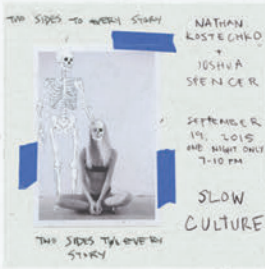
What A Time To Be Alive



Justin Hager - Earth People



Mel Kadel - Sky's Eyes



Nathan Kostechko + Joshua Spencer



Milk and Honey



Deeds Not Words 3



Brain Dead - Lights Out



Felix The Cat - Cat's Out of The Bag



Jerry Hsu - A Love Like Mine Is Hard to Find



Joe Roberts - LSD Worldpeace



Big Butter - A Step Felt In Full - Mike & Tim Biskup



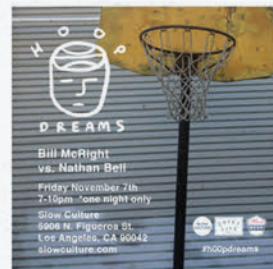
Deadbeat Club - Mentally Retired



Paul Chan - Off Safety



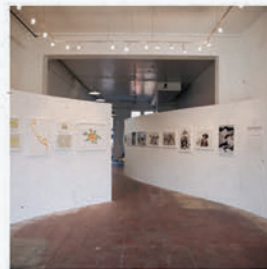
Jay Howell - Come Down Easy



Hoop Dreams - Nathan Bell & Bill Mcright



The Quiet Life x Katsuo Design Pop-Up Shop



Our Open Road - Terra Incognita



Travis Millard - Kiss My Aura

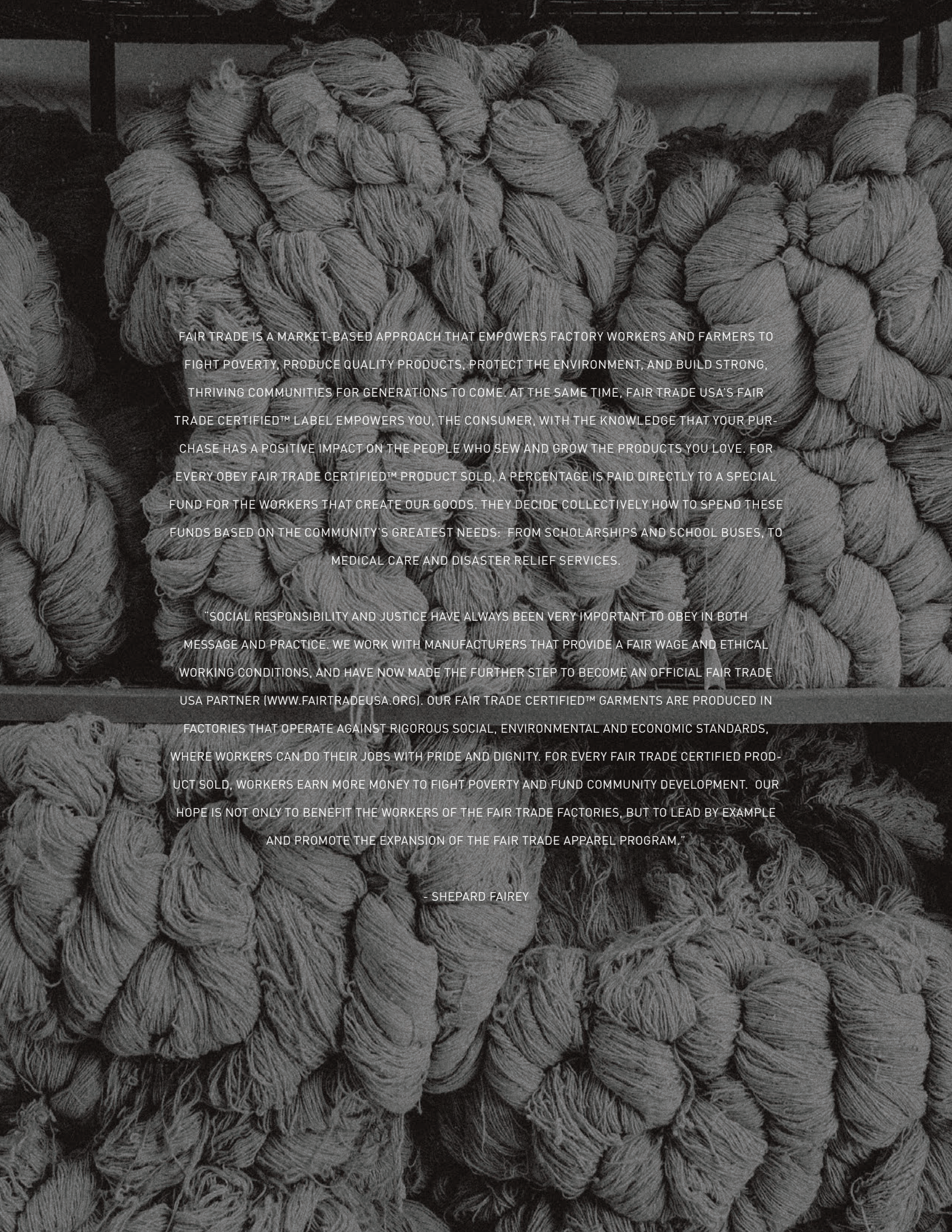


Amanny Ahmad - Perpetual Motion

**BUY
FAIR.
BE
FAIR.**

FAIR TRADE





FAIR TRADE IS A MARKET-BASED APPROACH THAT EMPOWERS FACTORY WORKERS AND FARMERS TO FIGHT POVERTY, PRODUCE QUALITY PRODUCTS, PROTECT THE ENVIRONMENT, AND BUILD STRONG, THRIVING COMMUNITIES FOR GENERATIONS TO COME. AT THE SAME TIME, FAIR TRADE USA'S FAIR TRADE CERTIFIED™ LABEL EMPOWERS YOU, THE CONSUMER, WITH THE KNOWLEDGE THAT YOUR PURCHASE HAS A POSITIVE IMPACT ON THE PEOPLE WHO SEW AND GROW THE PRODUCTS YOU LOVE. FOR EVERY OBEY FAIR TRADE CERTIFIED™ PRODUCT SOLD, A PERCENTAGE IS PAID DIRECTLY TO A SPECIAL FUND FOR THE WORKERS THAT CREATE OUR GOODS. THEY DECIDE COLLECTIVELY HOW TO SPEND THESE FUNDS BASED ON THE COMMUNITY'S GREATEST NEEDS: FROM SCHOLARSHIPS AND SCHOOL BUSES, TO MEDICAL CARE AND DISASTER RELIEF SERVICES.

"SOCIAL RESPONSIBILITY AND JUSTICE HAVE ALWAYS BEEN VERY IMPORTANT TO OBEY IN BOTH MESSAGE AND PRACTICE. WE WORK WITH MANUFACTURERS THAT PROVIDE A FAIR WAGE AND ETHICAL WORKING CONDITIONS, AND HAVE NOW MADE THE FURTHER STEP TO BECOME AN OFFICIAL FAIR TRADE USA PARTNER (WWW.FAIRTRADEUSA.ORG). OUR FAIR TRADE CERTIFIED™ GARMENTS ARE PRODUCED IN FACTORIES THAT OPERATE AGAINST RIGOROUS SOCIAL, ENVIRONMENTAL AND ECONOMIC STANDARDS, WHERE WORKERS CAN DO THEIR JOBS WITH PRIDE AND DIGNITY. FOR EVERY FAIR TRADE CERTIFIED PRODUCT SOLD, WORKERS EARN MORE MONEY TO FIGHT POVERTY AND FUND COMMUNITY DEVELOPMENT. OUR HOPE IS NOT ONLY TO BENEFIT THE WORKERS OF THE FAIR TRADE FACTORIES, BUT TO LEAD BY EXAMPLE AND PROMOTE THE EXPANSION OF THE FAIR TRADE APPAREL PROGRAM."

- SHEPARD FAIREY

NEW THREAT USA
SLIM STRAIGHT FIT



- A. Comfortable waist, sits at waist
- B. Medium Rise
- C. Straight through hip and thigh
- D. Slim leg
- E. 15" leg opening (based on size 32)

NEW THREAT USA

NEW THREAT USA DENIM

142010051

- Slim straight fit 5 pocket denim jeans made in USA
- Features custom OBEY logo shanks at center front fly closure with novelty logo rivet details throughout
- Includes OBEY specialty leather label at exterior back waistband and custom USA flag label in the interior waistband
- 100% Cotton



| | COLOR | 28 | 30 | 31 | 32 | 33 | 34 | 36 | 38 |
|----|--------------|----|----|----|----|----|----|----|----|
| A. | RAW INDIGO | | | | | | | | |
| B. | LIGHT INDIGO | | | | | | | | |

89 GROUP



EIGHTY NINE LIMO COAT
121800225

89 GROUP

EIGHTY NINE PATCH WOVEN SS

181210125

- Slim fit short sleeve button up shirt
- A unique patchwork effect on soft oxford fabric. A proper button down collar shirt and a thin contrast piping at underside of collarstand
- Features small felt patch at chest and all buttons detail in logo white pearl color
- 100% Cotton



A.

| | COLOR | S | M | L | XL | XXL |
|----|------------|---|---|---|----|-----|
| A. | WHITE | | | | | |
| B. | LIGHT BLUE | | | | | |

EIGHTY NINE PATCH WOVEN LS

181200151

- Slim fit long sleeve button up shirt
- A unique patchwork effect in soft oxford fabric. A proper button down collar shirt and a thin contrast piping at underside of collarstand
- Features small felt patch at chest and all buttons detail in logo white pearl color
- 100% Cotton



A.

| | COLOR | S | M | L | XL | XXL |
|----|------------|---|---|---|----|-----|
| A. | LIGHT BLUE | | | | | |
| B. | WHITE | | | | | |

EIGHTY NINE FAT STRIPE S/S TEE

131080178

- Regular fit short sleeve crew neck tee with solid rib trims
- Features icon patch at chest and yarn dyed striped jersey fabrication
- Includes OBEY specialty labels at side seam and interior neck
- 80% Cotton / 20% Polyester



A.

| | COLOR | S | M | L | XL | XXL |
|----|-------------|---|---|---|----|-----|
| A. | BLACK MULTI | | | | | |
| B. | RED MULTI | | | | | |

EIGHTY NINE FAT STRIPE L/S TEE

131030055

- Regular fit long sleeve crew neck tee with solid rib trims
- Features icon patch at chest and yarn dyed jersey fabrication
- Includes OBEY specialty labels at side seam and interior neck
- 80% Cotton / 20% Polyester



A.

| | COLOR | S | M | L | XL | XXL |
|----|-------------|---|---|---|----|-----|
| A. | RED MULTI | | | | | |
| B. | BLACK MULTI | | | | | |

89 GROUP

EIGHTY NINE POLO

131090020

- Regular fit short sleeve polo with solid rib trims
- Features icon patch at chest, pique jersey fabrication and OBEY logo buttons at placket
- Includes OBEY specialty labels at side seam and interior neck
- 100% Cotton



A.

| | COLOR | S | M | L | XL | XXL |
|----|-------|---|---|---|----|-----|
| A. | BLACK | | | | | |
| B. | WHITE | | | | | |

EIGHTY NINE ICON CREW

111600069

- Slim fit crew neck fleece with rib trims
- Features an OBEY icon patch at chest, french terry fabrication and novelty stitching along seams
- Includes OBEY specialty labels at side seam interior neck
- 80% Cotton / 20% Polyester



A.

| | COLOR | S | M | L | XL | XXL |
|----|-------|---|---|---|----|-----|
| A. | WHITE | | | | | |
| B. | BLACK | | | | | |

EIGHTY NINE ICON PULLOVER HOOD

111610032

- Slim fit pullover hooded fleece with rib trims
- Features an OBEY icon patch at chest, french terry fabrication and novelty stitching along seams
- Includes OBEY specialty labels at side seam interior neck
- 80% Cotton / 20% Polyester



A.

| | COLOR | S | M | L | XL | XXL |
|----|-------|---|---|---|----|-----|
| A. | WHITE | | | | | |
| B. | BLACK | | | | | |

EIGHTY NINE LIMO COAT

121800225

- Regular fit driver's coat
- Soft durable moleskin driver's coat with button closure at center front. Interior body lined with smooth acetate lining. Slightly oversized bottom welt pocket entry and adjustable tab closure at sleeve opening. Features small flag label at side seam and OBEY logo enamel pin at chest
- SHELL: 100% Cotton; LINING: 100% Acetate



A.

| | COLOR | S | M | L | XL | XXL |
|----|-------|---|---|---|----|-----|
| A. | BLACK | | | | | |

89 GROUP

NINETEEN EIGHTY NINE 6 PANEL

100580007

- Unstructured low profile fit
- Wool 6 panel strapback, OBEY logo felt patch and adjustable leather strap closure.
- OBEY flag label at closure
- 60% Wool / 20% Nylon / 20% Acrylic



A.

| | COLOR | O/S | | | | |
|----|----------------------|-----|--|--|--|--|
| A. | WHITE / BLACK | | | | | |
| B. | HEATHER GREY / BLACK | | | | | |

EIGHTY NINE BEANIE

100030072

- Shallow fit fine knit roll cuff beanie with OBEY original felt patch
- 100% Acrylic



A.

| | COLOR | O/S | | | | |
|----|--------------|-----|--|--|--|--|
| A. | BLACK | | | | | |
| B. | HEATHER GREY | | | | | |

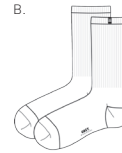
EIGHTY NINE SOCKS

100260074

- Athletic socks with comfortable french terry footing
- OBEY icon face clip flag label at top and screened logo at foot
- 80% Cotton / 18% Nylon / 2% Spandex



A.



B.

C.

| | COLOR | O/S | | | | |
|----|--------------|-----|--|--|--|--|
| A. | HEATHER GREY | | | | | |
| B. | WHITE | | | | | |
| C. | BLACK | | | | | |

LEATHER



BASTARDS LEATHER JACKET
121800233

LEATHER

PILOT SUEDE JACKET

121800159

- Slim fit bomber jacket
- Soft zip up suede jacket with soft ribbing at collar, cuff and at bottom waist. Welt pocket entry at bottom and utility pocket at sleeve. Features small flag label at side seam
- SHELL: 100% Leather; LINING: 100% Polyester



| | COLOR | S | M | L | XL | XXL |
|----|---------|---|---|---|----|-----|
| A. | CARAMEL | | | | | |
| B. | ARMY | | | | | |

BASTARDS LEATHER JACKET

121800233

- Slim fit motorcycle jacket
- Soft leather motorcycle jacket with details of all silver hardware and zip up pockets at chest, bottom front and bottom waistband money belt. Interior body with OBEY logo printed all over.
- Features small flag label at side seam
- SHELL: 100% Leather; LINING: 100% Acetate



| | COLOR | S | M | L | XL | XXL |
|----|-------|---|---|---|----|-----|
| A. | BLACK | | | | | |

FAUX LEATHER

BASTARDS PU JACKET

121800239

- Slim fit motorcycle jacket
- Unique soft vegan leather motorcycle jacket. Details of all silver hardware and zip up pockets at chest, bottom front and bottom waistband money belt. Features small pin at lapel and small flag label at side seam. Dress it up or down with classic Black or a fresh new color
- SHELL: 100% Polyetherane; LINING: 100% Polyester



| | COLOR | S | M | L | XL | XXL |
|----|-------|---|---|---|----|-----|
| A. | ARMY | | | | | |
| B. | BLACK | | | | | |

JACKETS



CREEPER GRAPHIC JACKET
121800234

JACKETS

SPIDER ROSE GRAPHIC JACKET

121800237

- Slim fit gas station jacket
- A lightweight zip up jacket with interior body lined with soft tricot. A roomy pocket at top side of sleeve to fit your next generation cell phone. Carrying over the popular Spider Rose back hit and OG letters at chest. Accent with small flag label at side seam
- SHELL: 100% Polyester; LINING: 100% Polyester



| | COLOR | S | M | L | XL | XXL |
|----|-------|---|---|---|----|-----|
| A. | NAVY | | | | | |
| B. | BLACK | | | | | |

STATIC GRAPHIC JACKET

121800245

- Regular fit gas station jacket
- A lightweight zip up jacket interior body lined with soft tricot. A roomy pocket at top side of sleeve to fit your next generation cell phone. Hit the town with OBEY static effect graphic boldly printed at backside and jumbled OBEY logo at front. Accent with small flag label at side seam
- SHELL: 100% Polyester; LINING: 100% Polyester



| | COLOR | S | M | L | XL | XXL |
|----|-----------|---|---|---|----|-----|
| A. | BLACK | | | | | |
| B. | DARK NAVY | | | | | |

CREEPER GRAPHIC JACKET

121800234

- Regular fit bomber jacket
- Smooth satin exterior with soft tricot lining the body, with gloss finish logo snaps at front closure and ribbing at collar, cuff and waistband. A soft flexible rib at collar, cuff and waistband. Creepin' it real with this important graphic, and features small flag label at side seam,
- SHELL: 100% Nylon; LINING: 100% Polyester



| | COLOR | S | M | L | XL | XXL |
|----|-------|---|---|---|----|-----|
| A. | BLACK | | | | | |

CHERRIES GRAPHIC JACKET

121800244

- Regular fit satin bomber jacket
- Smooth satin exterior with soft tricot lining the body, is an update to the great seller Creeper Graphic Jacket. Gloss finish logo snaps at front closure and ribbing at collar, cuff and waistband. Following the weirdo vibes from previous bomber, this style is revived with a cherry graphic embroidery at front and backside. Then accent with small flag label at side seam
- SHELL: 100% Nylon; LINING: 100% Polyester



| | COLOR | S | M | L | XL | XXL |
|----|-------|---|---|---|----|-----|
| A. | BLACK | | | | | |

JACKETS

SUSPENDED JACKET

121800240

- Regular fit gas station jacket
- Zip up jacket in shadow plaid flannel with soft hand feel. Elastic sleeve cuff and bottom opening with small flag label at side seam. A clean style featuring jumbled OBEY embroidery at chest in traditional gas station silhouette
- SHELL: 55% Cotton / 45% Acrylic; LINING: 100% Acetate



| | COLOR | S | M | L | XL | XXL |
|----|----------------|---|---|---|----|-----|
| A. | CHARCOAL MULTI | | | | | |
| B. | RED MULTI | | | | | |

LIAM JACKET

121160006

- Regular fit long sleeve button up shirt jacket
- Soft plaid flannel jacket with interior body lined with soft cloud sherpa. It is offered with double chest pockets and flap closures. Features OBEY strip label at front pocket and black gloss snaps for all closures
- SHELL: 100% Cotton; LINING: 100% Polyester



| | COLOR | S | M | L | XL | XXL |
|----|------------|---|---|---|----|-----|
| A. | RED MULTI | | | | | |
| B. | NAVY MULTI | | | | | |

SANDERS COACHES JACKET

121800246

- Regular fit coaches jacket
- Extra soft insulated jacket with interior lining. Gloss finish logo snaps at front closure and small flag label at side seam. Features tackle-twill script "O" patch directly sewn at front and collegiate OBEY letters directly sewn at back. Clean style but wearable for every day
- SHELL: 100% Polyester; LINING: 100% Polyester



| | COLOR | S | M | L | XL | XXL |
|----|------------|---|---|---|----|-----|
| A. | DUSTY NAVY | | | | | |
| B. | BLACK | | | | | |

SINGFORD STADIUM JACKET

121800247

- Regular fit long stadium parka jacket
- Soft insulated hooded jacket with interior diamond quilting at hood, body and sleeves. Gloss finish logo snaps at front closure and small flag label at side seam. This simple parka style features jumbled OBEY screen print at chest for a bold statement
- SHELL: 100% Polyester; LINING: 100% Polyester



| | COLOR | S | M | L | XL | XXL |
|----|------------|---|---|---|----|-----|
| A. | BLACK | | | | | |
| B. | DUSTY NAVY | | | | | |

JACKETS

BAKER GRAPHIC JACKET

121800214

- Regular fit coaches jacket
- Lightweight with interior body lined in soft brushed tricot. Gloss finish logo snaps at front closure and small flag label at side seam. Features tonal gel OBEY logo print at chest and backside.
- SHELL: 100% Polyester; LINING: 100% Polyester



| | COLOR | S | M | L | XL | XXL |
|----|------------|---|---|---|----|-----|
| A. | DUSTY ARMY | | | | | |
| B. | BURGUNDY | | | | | |
| C. | BLACK | | | | | |

BELLEVUE JACKET

121800249

- Regular fit gas station jacket
- Flight satin zip up jacket with contrast body lining, which is quilted and insulated. Contrast sherpa collar and small branded pin at collar. A hybrid of sophistication but easy going style with jumbled OBEY logo embroidery at chest and small flag label at side seam
- SHELL: 100% Nylon; LINING: 100% Acetate; FAUX FUR: 100% Polyester



| | COLOR | S | M | L | XL | XXL |
|----|----------------|---|---|---|----|-----|
| A. | BLACK | | | | | |
| B. | MILITARY OLIVE | | | | | |

TRAILER JACKET

121800250

- Regular fit men's jacket
- Bold plaid flannel jacket with interior body lined and insulated. Center front zip up jacket with contrast sherpa at collar. Style is offered with double chest pockets and strip label at flap. A great throw over piece
- SHELL: 55% Cotton / 45% Acrylic; LINING: 100% Acetate; FAUX FUR: 100% Polyester



| | COLOR | S | M | L | XL | XXL |
|----|----------------|---|---|---|----|-----|
| A. | RUST MULTI | | | | | |
| B. | CHARCOAL MULTI | | | | | |

THE JACK WOVEN

181200166

- Regular fit long sleeve button up shirt
- Soft moleskin-like military inspired CPD shirt. Detailed with double chest pockets with flap closures and bottom side pocket entry. Features OBEY strip label at front pocket flap. All buttons detail in logo solid black color
- BLACK: 96% Polyester / 2% Rayon / 2% Spandex; HEATHER ARMY: 88% Polyester / 10% Rayon / 2% Spandex



| | COLOR | S | M | L | XL | XXL |
|----|--------------|---|---|---|----|-----|
| A. | HEATHER ARMY | | | | | |
| B. | BLACK | | | | | |

JACKETS

LINESMAN JACKET

121800248

- Regular fit bomber jacket
- Durable heavy twill liner style bomber with heavy vintage washing. Exterior body is vertically quilted through the interior lining. Soft darker colored ribbing at collar, cuff and waistband. OBEY logo embroidery at chest and small flag label at side seam
- SHELL: 100% Cotton; LINING: 100% Polyester



| | COLOR | S | M | L | XL | XXL |
|----|------------|---|---|---|----|-----|
| A. | DUSTY ARMY | | | | | |
| B. | BLACK | | | | | |

ALDEN JACKET

121800223

- Regular fit bomber jacket
- Zip up bomber jacket with light coating for water resistency. Lightly insulated at interior body, utility pocket at sleeve and welt pocket entry at bottom. A soft flexible rib at standing collar, cuff and waistband. Features OBEY logo embroidery at chest and small flag label at side seam
- SHELL: 100% Polyester; LINING: 100% Polyester; FILLING: 100% Polyester



| | COLOR | S | M | L | XL | XXL |
|----|-------|---|---|---|----|-----|
| A. | ARMY | | | | | |
| B. | BLACK | | | | | |

OVERNIGHT STADIUM PARKA

121800243

- Regular fit long stadium parka jacket
- Durable heavy twill hooded stadium style jacket. Gloss finish logo snaps at center front closure and small flag label at side seam. Military influenced logo embossed velcro sewn at chest makes this an easy transition piece year-round
- 100% Cotton



| | COLOR | S | M | L | XL | XXL |
|----|------------|---|---|---|----|-----|
| A. | DUSTY ARMY | | | | | |
| B. | BLACK | | | | | |

SOTO COLLEGIATE JACKET

121800232

- Regular fit varsity jacket
- Interior body quilted and insulated in wool blend jacket and contrast PU sleeves. Gloss finish logo snap closure at front, and a soft flexible rib at collar, cuff and waistband. Features chain stitch embroidery at chest
- SHELL: 70% Polyester / 30% Wool; SLEEVES: 100% PU; LINING: 100% Polyester; FILLING: 100% Polyester



| | COLOR | S | M | L | XL | XXL |
|----|-----------|---|---|---|----|-----|
| A. | BLACK | | | | | |
| B. | DARK ARMY | | | | | |

JACKETS

LURKER COACHES JACKET

121800241

- Regular fit coaches jacket
- Soft moleskin-like jacket with gloss finish logo snaps and small flag label at side seam. Features sleek OBEY embroidery at chest and small branded pin at collar. This style offered in classic coaches silhouette with utilitarian vibes
- HEATHER CHARCOAL: SHELL: 88% Polyester / 10% Rayon / 2% Spandex; LINING: 100% Polyester
- SHELL: 96% Polyester / 2% Rayon / 2% Spandex; LINING: 100% Polyester



| | COLOR | S | M | L | XL | XXL |
|----|------------------|---|---|---|----|-----|
| A. | HEATHER CHARCOAL | | | | | |
| B. | BLACK | | | | | |

GRAMPS TRENCH COAT

121800242

- Regular fit long trench jacket
- Soft moleskin-like long driver's coat. Center front closure with hidden buttons and small branded pin at collar. Features jumbled OBEY embroidery at chest and small flag label at side seam. Perfect for date night or creeping the streets in style
- SHELL: 88% Polyester / 10% Rayon / 2% Spandex; LINING: 100% Polyester



| | COLOR | S | M | L | XL | XXL |
|----|------------------|---|---|---|----|-----|
| A. | HEATHER ARMY | | | | | |
| B. | HEATHER CHARCOAL | | | | | |

HILLMAN JACKET

121800148

- Regular fit parka jacket
- Heavy weight insulated parka jacket with interior hood lined with sherpa. Coating at backside of fabric for water resistancy. Hidden zipper and exposed snap closure at front and snap down welt pockets. Features real leather patch with original debossed art at chest and small flag label at side seam
- SHELL: 100% Polyester; LINING: 100% Polyester; FILLING: 100% Polyester



| | COLOR | S | M | L | XL | XXL |
|----|----------|---|---|---|----|-----|
| A. | TOBACCO | | | | | |
| B. | BLACK | | | | | |
| C. | BURGUNDY | | | | | |

HELLER JACKET

121800229

- Regular fit parka jacket
- Heavyweight parka with coating for water resistancy. Patch pockets at chest and bottom. Interior body is lined with sherpa and lightly insulated for added warmth. Drawcord at hood to cinch and rib hidden under sleeve opening. Features flag label at side seam, mil spec printed above bottom pocket and OBEY pin at chest
- SHELL: 100% Cotton; LINING: 100% Polyester; FILLING: 100% Polyester



| | COLOR | S | M | L | XL | XXL |
|----|-------|---|---|---|----|-----|
| A. | BLACK | | | | | |
| B. | ARMY | | | | | |

SWEATERS



DAMAGE SWEATER
151000033

SWEATERS

DUREN SWEATER

- Cotton blend crew neck sweater with solid rib trims
- Features an all over OBEY original pattern and label at side seam
- 60% Cotton / 40% Polyester

151000034



A.



B.

| | COLOR | S | M | L | XL | XXL |
|----|---------------|---|---|---|----|-----|
| A. | BLACK / WHITE | | | | | |
| B. | BROWN / BLACK | | | | | |

BACKSIDE SWEATER

- Crew neck sweater in brushed mohair-like acrylic yarn with solid rib trims
- Features an OBEY original shadow plaid pattern and label at side seam
- 100% Acrylic

151000032



A.



B.

| | COLOR | S | M | L | XL | XXL |
|----|-------------|---|---|---|----|-----|
| A. | RED MULTI | | | | | |
| B. | BLACK MULTI | | | | | |

NEW TIMES DRIFTER SWEATER

- Crew neck sweater in a seed knit pattern with rib trims
- Features an original OBEY logo embroidery at chest and label at side seam
- 100% Cotton

151000036



A.



B.



C.

| | COLOR | S | M | L | XL | XXL |
|----|---------|---|---|---|----|-----|
| A. | MAGENTA | | | | | |
| B. | BLACK | | | | | |
| C. | ARMY | | | | | |

DAMAGE SWEATER

- Cotton blend crew neck sweater with solid rib trims
- Features an all over OBEY original pattern and label at side seam
- 60% Cotton / 40% Polyester

151000033



A.



B.

| | COLOR | S | M | L | XL | XXL |
|----|--------------------|---|---|---|----|-----|
| A. | BLACK MULTI | | | | | |
| B. | HEATHER GREY MULTI | | | | | |

SWEATERS

LIBERTY SWEATER

- Crew neck sweater with rib trims
- Features a cable knit striped pattern and label at side seam
- 100% Acrylic

151000031

CREEPER ZIP SWEATER

- Comfortable zipped front pocket cardigan with rib trims
- Features a chunky marled yarn with original OBEY pattern and label at side seam
- 60% Cotton / 40% Acrylic

151000030



A.

B.



A.

| | COLOR | S | M | L | XL | XXL |
|----|----------------|---|---|---|----|-----|
| A. | PINK MULTI | | | | | |
| B. | GRAPHITE MULTI | | | | | |

| | COLOR | S | M | L | XL | XXL |
|----|-------|---|---|---|----|-----|
| A. | BLACK | | | | | |



SPECIALTY FLEECE



LOFTY CREATURE PULLOVER
111610000

SPECIALTY FLEECE

LOFTY CREATURE COMFORTS CREW

111600002

- Slim fit crew neck fleece with raglan sleeves
- Features an extra soft fleece fabrication and self trims at neck, cuffs and waistband
- Includes OBEY specialty labels at exterior front and interior neck
- 60% Cotton / 40% Polyester



| | COLOR | S | M | L | XL | XXL |
|----|--------------|---|---|---|----|-----|
| A. | IRON | | | | | |
| B. | BLACK | | | | | |
| C. | HEATHER GREY | | | | | |
| D. | DARK SLATE | | | | | |

LOFTY CREATURE COMFORTS PULLOVER

111610000

- Slim fit pullover hooded fleece with raglan sleeves
- Features an extra soft fleece fabrication and self trims cuffs and waistband and a natural drawcord through hood
- Includes OBEY specialty labels at exterior front and interior neck
- 60% Cotton / 40% Polyester



| | COLOR | S | M | L | XL | XXL |
|----|--------------|---|---|---|----|-----|
| A. | DARK SLATE | | | | | |
| B. | BLACK | | | | | |
| C. | HEATHER GREY | | | | | |
| D. | IRON | | | | | |

WILTON STRIPE CREW

111620023

- Slim fit crew neck fleece with solid rib trims
- Features a yarn dyed stripe fleece fabrication and OBEY logo embroidery at chest
- Includes OBEY specialty labels at side seam and interior neck
- 80% Cotton / 20% Polyester



| | COLOR | S | M | L | XL | XXL |
|----|----------------------|---|---|---|----|-----|
| A. | FADED BURGUNDY MULTI | | | | | |
| B. | BLACK MULTI | | | | | |

DELTA CARDIGAN

111010000

- Regular fit button front fleece cardigan with solid rib trims
- Features a yarn dyed stripe fleece fabrication and OBEY logo embroidery at chest
- Includes OBEY specialty labels at side seam and interior neck
- 80% Cotton / 20% Polyester



| | COLOR | S | M | L | XL | XXL |
|----|-------------|---|---|---|----|-----|
| A. | BLACK MULTI | | | | | |
| B. | NAVY MULTI | | | | | |

SPECIALTY FLEECE

FOSTER CREW

112480000

- Slim fit crew neck fleece with triangle rib inset and solid rib trims
- Features a french terry fabrication with novelty stitching along seams and OBEY original felt applique at chest
- Includes OBEY specialty labels at side seam and interior neck
- SOLID: 80% Cotton / 20% Polyester
- HEATHER GREY: 55% Cotton / 45% Polyester



| | COLOR | S | M | L | XL | XXL |
|----|--------------|---|---|---|----|-----|
| A. | HEATHER GREY | | | | | |
| B. | NAVY | | | | | |
| C. | BLACK | | | | | |

FOSTER ZIP HOOD

112460000

- Slim fit zipped front fleece with pocket and solid rib trims
- Features a french terry fabrication with novelty stitching along seams, OBEY logo zipper and OBEY original felt applique at chest
- Includes OBEY specialty labels at side seam and interior neck
- SOLID: 80% Cotton / 20% Polyester
- HEATHER GREY: 55% Cotton / 45% Polyester



| | COLOR | S | M | L | XL | XXL |
|----|--------------|---|---|---|----|-----|
| A. | BLACK | | | | | |
| B. | HEATHER GREY | | | | | |
| C. | NAVY | | | | | |

WATSON HOOD

112470000

- Slim fit hooded fleece with front pocket and solid rib trims
- Features a french terry fabrication with novelty stitching along seams and OBEY twill letters at chest
- Includes OBEY specialty labels at side seam and interior neck
- SOLID: 80% Cotton / 20% Polyester
- HEATHER GREY: 55% Cotton / 45% Polyester



| | COLOR | S | M | L | XL | XXL |
|----|--------------|---|---|---|----|-----|
| A. | BLACK | | | | | |
| B. | HEATHER GREY | | | | | |
| C. | NAVY | | | | | |

LAFAYETTE FLEECE JACKET

111800002

- Regular fit polar fleece zipped front jacket with elastic hem and cuff
- Features an extra soft polar fleece fabrication with welt pockets, OBEY logo zipper and OBEY logo embroidery at chest
- Includes OBEY specialty labels at side seam and interior neck
- 100% Polyester



| | COLOR | S | M | L | XL | XXL |
|----|-------|---|---|---|----|-----|
| A. | NAVY | | | | | |
| B. | BLACK | | | | | |

SPECIALTY FLEECE

MONUMENT FLEECE CREW

111600083

- Regular fit crew neck fleece with raglan sleeves and rib trims
- Features a contrasting two tone heathered french terry fabrication, novelty stitching along seams and OBEY leather clip label at bottom hem edge
- Includes OBEY specialty label at interior neck
- 100% Cotton



| | COLOR | S | M | L | XL | XXL |
|----|------------------|---|---|---|----|-----|
| A. | HEATHER OATMEAL | | | | | |
| B. | HEATHER SPRUCE | | | | | |
| C. | HEATHER DARK INK | | | | | |

MONUMENT FLEECE PULLOVER HOOD

111610041

- Regular fit pullover fleece with raglan sleeves, rib trims and pouch pocket
- Features a contrasting two tone heathered french terry fabrication, novelty stitching along seams and OBEY leather clip label at bottom hem edge
- Includes OBEY specialty label at interior neck
- 100% Cotton



| | COLOR | S | M | L | XL | XXL |
|----|------------------|---|---|---|----|-----|
| A. | HEATHER SPRUCE | | | | | |
| B. | HEATHER OATMEAL | | | | | |
| C. | HEATHER DARK INK | | | | | |

MONUMENT FLEECE PANT

142030016

- Standard fit elastic waist fleece pants with faux fly and drawcord closure at center front
- Features slash pockets, back patch pockets, and tunneled through drawcord at interior waistband
- Includes OBEY specialty labels at exterior back pocket and interior waistband
- 100% Cotton



| | COLOR | S | M | L | XL | XXL |
|----|------------------|---|---|---|----|-----|
| A. | HEATHER DARK INK | | | | | |
| B. | HEATHER SPRUCE | | | | | |
| C. | HEATHER OATMEAL | | | | | |

SPECIALTY FLEECE

PROSPECT RAGLAN CREW

11160097

- Slim fit crew neck fleece with raglan sleeves and solid rib trims
- Features a reversed fleece fabrication and tonal OBEY logo embroidery at chest
- Includes OBEY specialty labels at side seam and interior neck
- 100% Cotton



B.



A.

| | COLOR | S | M | L | XL | XXL |
|----|-------------|---|---|---|----|-----|
| A. | FADED BLACK | | | | | |
| B. | CARAMEL | | | | | |

PROSPECT HOOD

111610057

- Slim fit hooded fleece pullover with front pocket and solid rib trims
- Features a reversed fleece fabrication and tonal OBEY logo embroidery at chest
- Includes OBEY specialty labels at side seam and interior neck
- 100% Cotton



B.



A.

| | COLOR | S | M | L | XL | XXL |
|----|-------------|---|---|---|----|-----|
| A. | CARAMEL | | | | | |
| B. | FADED BLACK | | | | | |



WOVENS



DISSENT TRAIT WOVEN LS
181200135

WOVENS

DISSENT TRAIT WOVEN LS

181200135

- Slim fit long sleeve button up shirt
- A clean proper button down collar shirt in oxford with single chest pocket. A thin contrast piping at underside of collarstand. Features small red flag label at side of pocket and all buttons detail in logo white pearl color
- 100% Cotton



| | COLOR | S | M | L | XL | XXL |
|----|------------|---|---|---|----|-----|
| A. | BLACK | | | | | |
| B. | WHITE | | | | | |
| C. | LIGHT BLUE | | | | | |
| D. | BURGUNDY | | | | | |

HOLDEN WOVEN LS

181200160

- Slim fit long sleeve button up shirt
- A soft speckled chambray with proper button down collar. A single chest pocket with a thin contrast piping underside of collarstand. Features small black flag label at side of pocket and all buttons detail in logo white pearl color
- 100% Cotton



| | COLOR | S | M | L | XL | XXL |
|----|------------|---|---|---|----|-----|
| A. | BURGUNDY | | | | | |
| B. | LIGHT BLUE | | | | | |
| C. | NAVY | | | | | |

KEBLE WOVEN LS

181200137

- Slim fit long sleeve button up shirt
- A clean proper button down collar shirt in denim with single chest pocket with button closure. Features small flag label at side of pocket and all buttons detail in logo white pearl color
- 100% Cotton



| | COLOR | S | M | L | XL | XXL |
|----|------------|---|---|---|----|-----|
| A. | CREAM | | | | | |
| B. | LIGHT BLUE | | | | | |
| C. | BLACK | | | | | |

WOVENS

STRATFORD WOVEN

181200172

- Regular fit long sleeve button up shirt
- Slight heavy twill plaid flannel with double chest pockets and flap closures. Features OBEY strip label at front pocket and all buttons detail logo in solid black color
- 100% Cotton



| | COLOR | S | M | L | XL | XXL |
|----|----------------|---|---|---|----|-----|
| A. | CHARCOAL MULTI | | | | | |
| B. | RED MULTI | | | | | |

RICHARDSON WOVEN

181200171

- Regular fit long sleeve button up shirt
- Double layer gauze with small houndstooth pattern and single chest pocket. Features small flag label at side of pocket. All buttons detail logo in matching color
- 100% Cotton



| | COLOR | S | M | L | XL | XXL |
|----|-------------|---|---|---|----|-----|
| A. | BLACK MULTI | | | | | |
| B. | BROWN MULTI | | | | | |

DOBBS WOVEN

181200176

- Regular fit long sleeve button up shirt
- Shadow plaid flannel with double chest pockets and flap closures. Features OBEY strip label at front pocket and all buttons detail logo in solid black color
- 100% Cotton



| | COLOR | S | M | L | XL | XXL |
|----|-------------|---|---|---|----|-----|
| A. | BROWN MULTI | | | | | |
| B. | RED MULTI | | | | | |

EASTON WOVEN

181200167

- Regular fit long sleeve button up shirt
- Vintage inspired tonal plaid flannel with double chest pockets and flap closures. Features OBEY strip label at front pocket flap and all buttons detail in logo matching color
- 100% Cotton



| | COLOR | S | M | L | XL | XXL |
|----|-------------|---|---|---|----|-----|
| A. | BROWN MULTI | | | | | |
| B. | NAVY MULTI | | | | | |

WOVENS

PATTERSON WOVEN

181200170

- Regular fit long sleeve button up shirt
- Twill plaid flannel with button down double chest pockets. Detailed with straight hem at bottom and features OBEY strip label at front pocket. All buttons detail logo in solid black color
- 65% Cotton / 35% Acrylic



| | COLOR | S | M | L | XL | XXL |
|----|------------|---|---|---|----|-----|
| A. | RED MULTI | | | | | |
| B. | NAVY MULTI | | | | | |

DEFENSE WOVEN

181200179

- Regular fit long sleeve button up shirt
- Military inspired shirt with double chest pockets and flap closures. Features OBEY strip label at one side of front chest pocket and small OBEY logo pin at other chest pocket. All buttons detail in gloss finish matching color
- 100% Cotton



| | COLOR | S | M | L | XL | XXL |
|----|-------|---|---|---|----|-----|
| A. | ARMY | | | | | |
| B. | BLACK | | | | | |

MYERS WOVEN

181200168

- Regular fit long sleeve button up shirt
- Solid twill chore inspired shirt with straight hem at bottom. Three patch pockets at front. Features OBEY strip label at front chest pocket and all buttons detail logo in solid black color
- 65% Cotton / 35% Polyester



| | COLOR | S | M | L | XL | XXL |
|----|-------|---|---|---|----|-----|
| A. | GREY | | | | | |
| B. | NAVY | | | | | |

WILCOX WOVEN

181200177

- Regular fit long sleeve button up shirt
- Heathered plaid flannel with double chest pockets and flap closures. Features OBEY strip label at front pocket and all buttons detail logo in matching color
- 100% Cotton



| | COLOR | S | M | L | XL | XXL |
|----|----------------|---|---|---|----|-----|
| A. | CHARCOAL MULTI | | | | | |
| B. | NAVY MULTI | | | | | |

WOVENS

HADLEY WOVEN

181200169

- Slim fit long sleeve button up shirt
- Soft heathered speckle flannel with a proper button down collar. Detailed with button down single chest pocket and small thin contrast piping at underside of interior collarstand. Features small flag label at side of pocket and all buttons detail logo in white pearl color
- 100% Cotton



| | COLOR | S | M | L | XL | XXL |
|----|------------------|---|---|---|----|-----|
| A. | HEATHER PINE | | | | | |
| B. | HEATHER NAVY | | | | | |
| C. | HEATHER CHARCOAL | | | | | |

LAPORTE WOVEN

181200174

- Regular fit long sleeve button up shirt
- Soft hand plaid flannel shirt with a proper button down collar. Detailed with button down chest pocket and features small flag label at side of pocket. All buttons detail logo in white pearl color
- 100% Cotton



| | COLOR | S | M | L | XL | XXL |
|----|------------|---|---|---|----|-----|
| A. | NAVY MULTI | | | | | |
| B. | RED MULTI | | | | | |

WALLACE WOVEN

181200175

- Regular fit long sleeve button up shirt
- Vintage inspired heavy twill large plaid flannel. Detailed with double chest pockets and interior accents of soft acetate. Features OBEY strip label at front pocket and all buttons detail logo in matching color
- 100% Cotton

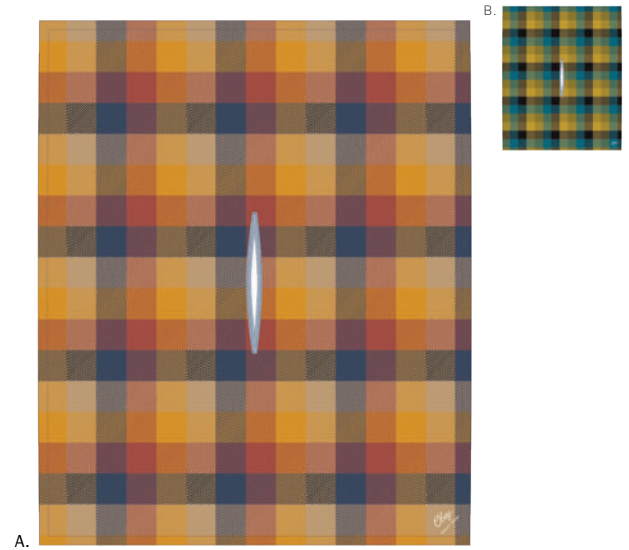


| | COLOR | S | M | L | XL | XXL |
|----|-------------|---|---|---|----|-----|
| A. | BROWN MULTI | | | | | |
| B. | BLUE MULTI | | | | | |

WALLACE PONCHO

121300001

- Extra large poncho in soft flannel plaid in multiple colors
- Features an original OBEY embroidery at corner
- 100% Cotton



| | COLOR | O/S | | | | |
|----|-------------|-----|--|--|--|--|
| A. | BROWN MULTI | | | | | |
| B. | BLUE MULTI | | | | | |



KNITS



MALTA LS TEE
131030058

KNITS

COMPOUND POCKET TEE

131080158

- Regular fit short sleeve crew neck tee with contrast rib trims
- Features a piece dyed jersey fabrication and chest pocket with rib binding
- Includes OBEY specialty labels at pocket and interior neck
- 100% Cotton



A.



| | COLOR | S | M | L | XL | XXL |
|----|--------|---|---|---|----|-----|
| A. | WHITE | | | | | |
| B. | FOREST | | | | | |
| C. | BLACK | | | | | |

MISSION HENLEY

131080176

- Regular fit short sleeve henley with solid rib trims
- Features a jersey fabrication, OBEY logo buttons at placket and OBEY screen print logo at chest
- Includes OBEY specialty labels at side seam and interior neck
- 100% Cotton



A.



| | COLOR | S | M | L | XL | XXL |
|----|--------------|---|---|---|----|-----|
| A. | BURGUNDY | | | | | |
| B. | BLACK | | | | | |
| C. | HEATHER GREY | | | | | |

BERKELEY POCKET TEE

131080185

- Regular fit short sleeve crew neck tee with solid rib trims
- Features a multi color yarn dyed stripe jersey fabrication and chest pocket
- Includes OBEY specialty labels at pocket and interior neck
- 100% Cotton



A.



| | COLOR | S | M | L | XL | XXL |
|----|----------------|---|---|---|----|-----|
| A. | BLACK MULTI | | | | | |
| B. | BURGUNDY MULTI | | | | | |

LOGAN POCKET TEE

131080184

- Regular fit short sleeve crew neck tee with solid rib trims
- Features a multi color yarn dyed stripe jersey fabrication and chest pocket
- Includes OBEY specialty labels at pocket and interior neck
- 100% Cotton



A.



| | COLOR | S | M | L | XL | XXL |
|----|-------------|---|---|---|----|-----|
| A. | BLUE MULTI | | | | | |
| B. | BROWN MULTI | | | | | |

KNITS

NOTE LS HENLEY

131030059

- Regular fit long sleeve henley with contrast sleeves and rib trims
- Features a loose knit textured fabrication, OBEY logo buttons at placket and OBEY logo embroidery at chest
- Includes OBEY specialty labels at side seam and interior neck
- 100% Cotton



A.

| | COLOR | S | M | L | XL | XXL |
|----|--------------------|---|---|---|----|-----|
| A. | WHITE MULTI | | | | | |
| B. | HEATHER GREY MULTI | | | | | |
| C. | OATMEAL MULTI | | | | | |

MURRAYSVILLE 3/4 SLV TEE

131030056

- Regular fit 3/4 sleeve crew tee with contrast rib trims
- Features a heavyweight carded jersey fabrication with contrast sleeve stripes and chest pocket
- Includes OBEY specialty labels at chest pocket and interior neck
- 100% Cotton



A.

| | COLOR | S | M | L | XL | XXL |
|----|--------------------|---|---|---|----|-----|
| A. | HEATHER GREY MULTI | | | | | |
| B. | WHITE MULTI | | | | | |
| C. | NAVY MULTI | | | | | |

SENATOR LS POLO

131040008

- Regular fit long sleeve polo with contrast twill collar
- Features a heavyweight jersey fabrication, OBEY logo buttons at placket and contrast twill OBEY applique at chest
- Includes OBEY specialty labels at side seam and interior neck
- 100% Cotton



A.

| | COLOR | S | M | L | XL | XXL |
|----|-----------|---|---|---|----|-----|
| A. | DARK NAVY | | | | | |
| B. | BURGUNDY | | | | | |

PROPAGANDA LS HOOD TEE

131020001

- Regular fit long sleeve hooded pullover tee with solid rib cuffs and drawcord
- Features a heavyweight jersey fabrication and OBEY logo embroidery at chest
- Includes OBEY specialty labels at side seam and interior neck
- 100% Cotton



A.

| | COLOR | S | M | L | XL | XXL |
|----|-------|---|---|---|----|-----|
| A. | IRON | | | | | |
| B. | BLACK | | | | | |

KNITS

MALTA LS TEE

131030058

- Regular fit long sleeve crew neck tee with solid rib trims
- Features a yarn dyed stripe jersey fabrication and OBEY screen print logo at chest
- Includes OBEY specialty labels at side seam and interior neck
- 100% Cotton



B.



A.

| | COLOR | S | M | L | XL | XXL |
|----|-------------|---|---|---|----|-----|
| A. | NAVY MULTI | | | | | |
| B. | BLACK MULTI | | | | | |

APEX TEE

131080182

- Regular fit short sleeve crew neck tee with solid rib trims
- Features a yarn dyed stripe jersey fabrication and OBEY screenprint logo at chest
- Includes OBEY specialty labels at side seam and interior neck
- 100% Cotton



B.



A.

| | COLOR | S | M | L | XL | XXL |
|----|-------------|---|---|---|----|-----|
| A. | BLACK MULTI | | | | | |
| B. | NAVY MULTI | | | | | |

EDGEWARE LS TEE

131030057

- Regular fit long sleeve crew neck tee with solid rib trims
- Features a heavyweight yarn dyed stripe jersey fabrication and OBEY logo embroidery at chest
- Includes OBEY specialty labels at side seam and interior neck
- 100% Cotton



B.



A.

| | COLOR | S | M | L | XL | XXL |
|----|-------------|---|---|---|----|-----|
| A. | BLACK MULTI | | | | | |
| B. | NAVY MULTI | | | | | |

CORONADO POCKET TEE

131080183

- Regular fit short sleeve crew neck tee with solid rib trims
- Features a printed houndtooth jersey fabrication and OBEY screen print logo at chest
- Includes OBEY specialty labels at side seam and interior neck
- 100% Cotton



B.



A.

| | COLOR | S | M | L | XL | XXL |
|----|----------------|---|---|---|----|-----|
| A. | BURGUNDY MULTI | | | | | |
| B. | WHITE MULTI | | | | | |

KNITS

JUMBLE SS PIGMENT TEE

131080186

- Regular fit short sleeve crew neck tee with solid rib trims
- Features pigment dyed jersey fabrication and tonal OBEY logo embroidery at chest
- Includes OBEY specialty labels at side seam and interior neck
- 100% Cotton



A.



| | COLOR | S | M | L | XL | XXL |
|----|---------------|---|---|---|----|-----|
| A. | DEEP BURGUNDY | | | | | |
| B. | LIGHT ARMY | | | | | |
| C. | BLACK | | | | | |

TYPE LS PIGMENT TEE

131030060

- Regular fit long sleeve crew neck tee with solid rib trims
- Features pigment dyed jersey fabrication and tonal OBEY logo embroidery at chest
- Includes OBEY specialty labels at side seam and interior neck
- 100% Cotton



A.

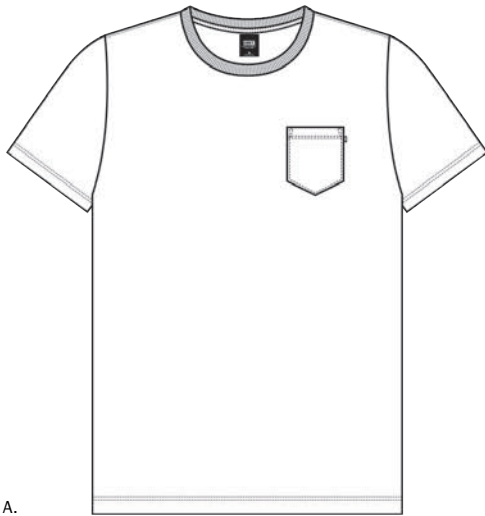


| | COLOR | S | M | L | XL | XXL |
|----|---------------|---|---|---|----|-----|
| A. | LIGHT ARMY | | | | | |
| B. | BLACK | | | | | |
| C. | DEEP BURGUNDY | | | | | |

PREMIUM POCKET TEE

165370000

- Regular fit short sleeve tee with a set in rib neck trim
- Features an extra soft lightweight jersey fabrication and chest pocket
- Includes OBEY specialty labels at chest pocket and interior neck
- 100% Cotton



A.

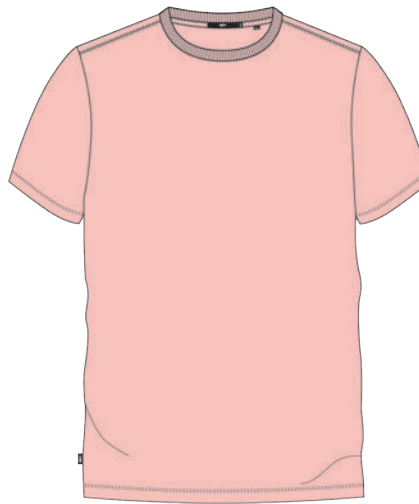


| | COLOR | S | M | L | XL | XXL |
|----|--------------|---|---|---|----|-----|
| A. | WHITE | | | | | |
| B. | BLACK | | | | | |
| C. | HEATHER GREY | | | | | |
| D. | NAVY | | | | | |

SUPERIOR TEE

166140000

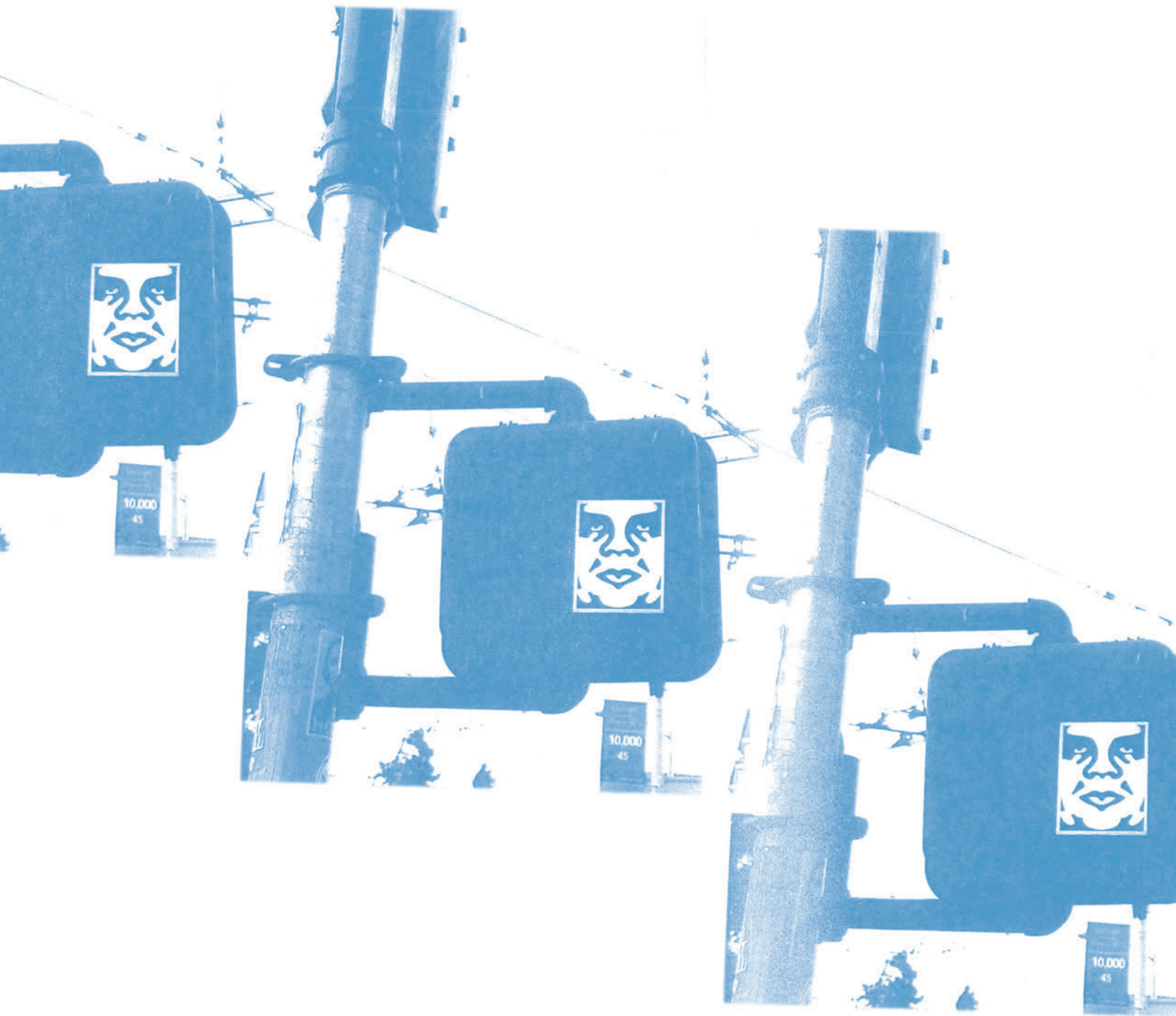
- Regular fit short sleeve tee with a set in rib neck trim
- Features fine knit jersey fabrication and a custom wash resulting in an extra soft hand feel
- Includes OBEY specialty labels at side seam and interior neck
- 100% Cotton



A.



| | COLOR | S | M | L | XL | XXL |
|----|-------|---|---|---|----|-----|
| A. | PINK | | | | | |
| B. | WHITE | | | | | |
| C. | BLACK | | | | | |



STRAGGLER PANT
(FLOODED. SHORTER INSEAM)
STANDARD FIT



- A. Comfortable waist, sits at waist
- B. Medium Rise
- C. Straight through hip and thigh
- D. Straight leg
- E. Flooded inseam [27" based on size 32]
- F. 15" leg opening (based on size 32)

PANTS

STRAGGLER FLOODED PANT

142020060

- Standard fit flooded (shorter inseam) stretch twill pants with button and zipper fly closure at center front
- Features slash pockets, contrast interior details, back welt pockets and a hard pressed crease along front and back
- Includes OBEY specialty labels at exterior back waist and interior waistband
- 60% Cotton / 39% Polyester / 1% Spandex

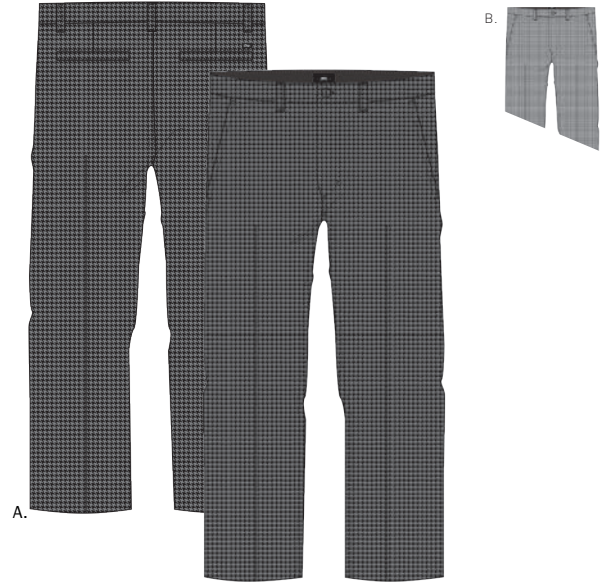


| | COLOR | 28 | 30 | 31 | 32 | 33 | 34 | 36 | 38 |
|----|--------------|----|----|----|----|----|----|----|----|
| A. | HEATHER GREY | | | | | | | | |
| B. | BLACK | | | | | | | | |
| C. | GREY BLUE | | | | | | | | |
| D. | BROWN | | | | | | | | |
| E. | KHAKI | | | | | | | | |
| F. | MIDNIGHT | | | | | | | | |
| G. | HEATHER ARMY | | | | | | | | |

STRAGGLER HOUNDSTOOTH FLOODED PANT

142020072

- Standard fit flooded (shorter inseam) printed houndstooth stretch twill pants with button and zipper fly closure at center front
- Features slash pockets, contrast interior details, back welt pockets and a hard pressed crease along front and back
- Includes OBEY specialty labels at exterior back waist and interior waistband
- 60% Cotton / 39% Polyester / 1% Spandex



| | COLOR | 28 | 30 | 31 | 32 | 33 | 34 | 36 | 38 |
|----|-------------|----|----|----|----|----|----|----|----|
| A. | BLACK MULTI | | | | | | | | |
| B. | WHITE MULTI | | | | | | | | |

STRAGGLER CARPENTER FLOODED PANT

142020067

- Standard fit flooded (shorter inseam) slub twill carpenter pants with button and zipper fly closure at center front
- Features slash pockets, carpenter pockets, contrast interior details, back patch pockets, and a hard pressed crease along front and back
- Includes OBEY specialty labels at exterior back waist and interior waistband
- 100% Cotton



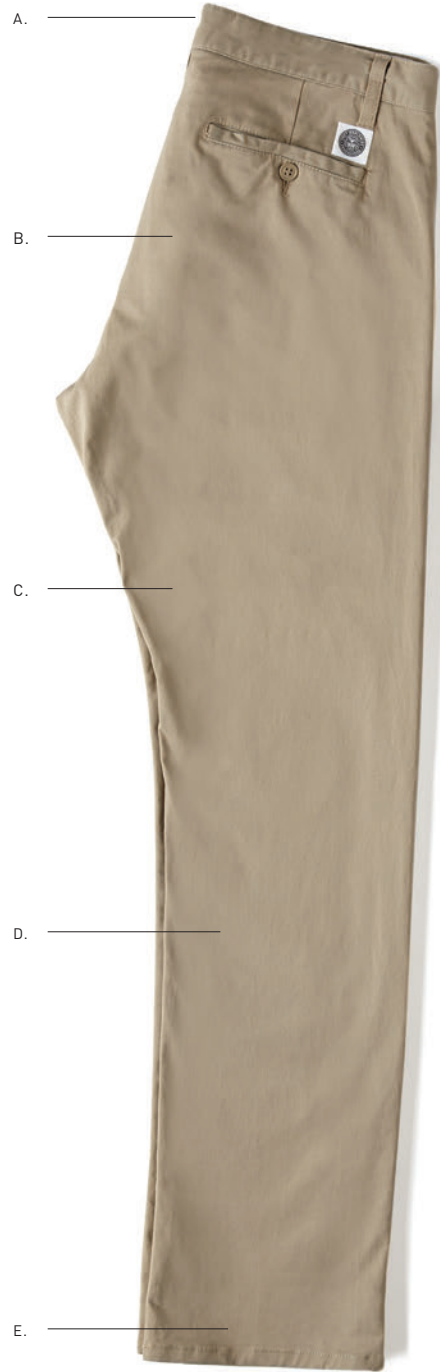
| | COLOR | 28 | 30 | 31 | 32 | 33 | 34 | 36 | 38 |
|----|--------|----|----|----|----|----|----|----|----|
| A. | FOREST | | | | | | | | |
| B. | BLACK | | | | | | | | |
| C. | WHITE | | | | | | | | |

**WORKING MAN PANT II
SLIM FIT**



- A. Comfortable waist, sits at waist
- B. Medium Rise
- C. Straight through hip and thigh
- D. Slim leg
- E. 15" leg opening (based on size 32)

**CLASSIQUE PANT
STANDARD FIT**



- A. Comfortable waist, sits at waist
- B. Medium Rise
- C. Straight through hip and thigh
- D. Straight leg
- E. 15.5" leg opening (based on size 32)

PANTS

WORKING MAN PANT II

142020059

- Slim fit stretch twill work pants with button and zipper fly closure at center front
- Features slash pockets, contrast interior details and back welt pockets
- Includes OBEY specialty labels at exterior back waist and interior waistband
- 99% Cotton / 1% Spandex / Elastane



| | COLOR | 28 | 30 | 31 | 32 | 33 | 34 | 36 | 38 |
|----|----------|----|----|----|----|----|----|----|----|
| A. | GRAPHITE | | | | | | | | |
| B. | BLACK | | | | | | | | |
| C. | KHAKI | | | | | | | | |

CLASSIQUE PANT

142020070

- Standard fit twill pants with button and zipper fly closure at center front
- Features slash pockets, contrast interior details and back single welt pockets with button closure
- Includes OBEY specialty labels at exterior back waistband and interior waistband
- 100% Cotton



| | COLOR | 28 | 30 | 31 | 32 | 33 | 34 | 36 | 38 |
|----|-------|----|----|----|----|----|----|----|----|
| A. | KHAKI | | | | | | | | |
| B. | BLACK | | | | | | | | |

LATENIGHT PANT
(FLOODED. SHORTER INSEAM)
SLIM FIT



- A. Comfortable waist, sits at waist
- B. Shorter Rise
- C. Slim through hip and thigh
- D. Slim leg
- E. Flooded inseam [27" based on size 32]
- F. 14.5" leg opening (based on size 32)

PANTS

LATENIGHT SATEEN PANT II

142020082

- Slim fit flooded (shorter inseam) stretch sateen pants with button and zipper fly closure at center front
- Features on seam front pockets, a two-piece waistband with contrast interior details and back single welt pockets
- Includes OBEY specialty labels at exterior back waist and interior waistband
- 98% Cotton / 2% Spandex



| | COLOR | 28 | 30 | 31 | 32 | 33 | 34 | 36 | 38 |
|----|-----------|----|----|----|----|----|----|----|----|
| A. | CHARCOAL | | | | | | | | |
| B. | BLACK | | | | | | | | |
| C. | DARK ARMY | | | | | | | | |
| D. | KHAKI | | | | | | | | |

LATENIGHT CORDUROY PANT

142020079

- Slim fit flooded (shorter inseam) corduroy pants with button and zipper fly closure at center front
- Features on seam front pockets, a two-piece waistband with contrast interior details and back single welt pockets
- Includes OBEY specialty labels at exterior back waist and interior waistband
- 100% Cotton



| | COLOR | 28 | 30 | 31 | 32 | 33 | 34 | 36 | 38 |
|----|----------|----|----|----|----|----|----|----|----|
| A. | KHAKI | | | | | | | | |
| B. | CHARCOAL | | | | | | | | |

LATENIGHT CITY PANT

142020078

- Slim fit flooded (shorter inseam) soft moleskin-like pants with button and zipper fly closure at center front
- Features on seam front pockets, a two-piece waistband with contrast interior details and back single welt pockets
- Includes OBEY specialty labels at exterior back waist and interior waistband
- 78% Polyester / 8% Modal / 7% Acrylic / 6% Rayon / 1% Others



| | COLOR | 28 | 30 | 31 | 32 | 33 | 34 | 36 | 38 |
|----|------------------|----|----|----|----|----|----|----|----|
| A. | HEATHER ARMY | | | | | | | | |
| B. | HEATHER CHARCOAL | | | | | | | | |

TOWNSEND PANT
(FLOODED. SHORTER INSEAM)
STANDARD FIT



- A. Comfortable waist, sits at waist
- B. Medium Rise
- C. Straight through hip and thigh
- D. Straight leg
- E. Flooded inseam [27" based on size 32]
- F. 15" leg opening (based on size 32)

PANTS

TOWNSEND PANT

142020081

- Standard fit flooded (shorter inseam) garment dyed brushed twill pants with button and zipper fly closure at center front
- Features on seam front pockets, a two-piece waistband with contrast interior details and back single welt pockets
- Includes OBEY specialty labels at exterior back waist and interior waistband
- 100% Cotton



| | COLOR | 28 | 30 | 31 | 32 | 33 | 34 | 36 | 38 |
|----|------------|----|----|----|----|----|----|----|----|
| A. | IRON | | | | | | | | |
| B. | BLACK | | | | | | | | |
| C. | DUSTY ARMY | | | | | | | | |

LUDLOW PANT
(FLOODED. SHORTER INSEAM)
STANDARD FIT



- A. Elastic waist, sits at waist
- B. Longer Rise
- C. Straight through hip and thigh
- D. Tapered leg
- E. Flooded inseam [28.5" based on size 32]
- F. 13.5" leg opening (based on size M)

PANTS

LUDLOW TWILL PANT

142020043

- Standard fit flooded (shorter inseam) elastic waist stretch twill pants with button and zipper fly closure at center front
- Features on seam pockets, back welt pockets and tunneled through drawcord at interior waistband
- Includes OBEY specialty labels at exterior back waist and interior waistband
- 60% Cotton / 39% Polyester / 1% Spandex



| | COLOR | S | M | L | XL | XXL |
|----|--------------|---|---|---|----|-----|
| A. | HEATHER ARMY | | | | | |
| B. | BLACK | | | | | |
| C. | KHAKI | | | | | |
| D. | HEATHER GREY | | | | | |

LUDLOW MOLESKIN PANT

142020073

- Standard fit flooded (shorter inseam) elastic waist moleskin pants with button and zipper fly closure at center front
- Features on seam pockets, back welt pockets and tunneled through drawcord at interior waistband
- Includes OBEY specialty labels at exterior back waist and interior waistband
- 100% Cotton



| | COLOR | S | M | L | XL | XXL |
|----|-------|---|---|---|----|-----|
| A. | BLACK | | | | | |

TRAVELER PANT
RELAXED FIT



- A. Elastic waist, sits at hip
- B. Longer Rise
- C. Relaxed fit through hip and thigh
- D. Tapered through leg
- E. Shorter inseam (30" based on size 32)
- F. 14.5" leg opening (based on size M)

PANTS

TRAVELER SLUB TWILL PANT

142020037

- Relaxed fit elastic waist military influenced climber pant in a heavy slub twill fabrication
- Features slash pockets, crotch gusset, back welt pockets, tunneled through drawcord at waistband, contrast interior details and a faux fly at center front
- Includes OBEY specialty labels at exterior back waist and interior waistband
- 100% Cotton



| | COLOR | S | M | L | XL | XXL |
|----|---------------|---|---|---|----|-----|
| A. | DARK BURGUNDY | | | | | |
| B. | KHAKI | | | | | |
| C. | BLACK | | | | | |
| D. | DARK SLATE | | | | | |
| E. | DARK ARMY | | | | | |
| F. | DARK BROWN | | | | | |

TRAVELER CAMO PANT

142020075

- Relaxed fit elastic waist military influenced printed twill climber pant
- Features slash pockets, crotch gusset, back patch pockets, tunneled through drawcord at waistband, contrast interior details and a faux fly at center front
- Includes OBEY specialty labels at exterior back waist and interior waistband
- 100% Cotton



| | COLOR | S | M | L | XL | XXL |
|----|---------------|---|---|---|----|-----|
| A. | ARMY CAMO | | | | | |
| B. | GRAPHITE CAMO | | | | | |

**BENDER 90'S DENIM
(FLOODED. SHORTER INSEAM)
STANDARD FIT**



- A. Comfortable waist, sits at waist
- B. Medium Rise
- C. Straight through hip and thigh
- D. Tapered leg
- E. Flooded inseam [27" based on size 32]
- F. 15" leg opening (based on size 32)

DENIM

BENDER 90'S DENIM

142010050

- Standard fit flooded (shorter inseam) five pocket denim jeans with button and zipper fly closure at center front
- Features custom OBEY logo shanks at center front fly closure with novelty logo rivet details throughout
- 100% Cotton



| | COLOR | 28 | 30 | 31 | 32 | 33 | 34 | 36 | 38 |
|----|--------------|----|----|----|----|----|----|----|----|
| A. | INDIGO | | | | | | | | |
| B. | LIGHT INDIGO | | | | | | | | |

BENDER 90'S OVERDYED DENIM

142010049

- Standard fit flooded (shorter inseam) five pocket overdyed denim jeans with button and zipper fly closure at center front
- Features custom OBEY logo shanks at center front fly closure with novelty logo rivet details throughout
- 100% Cotton

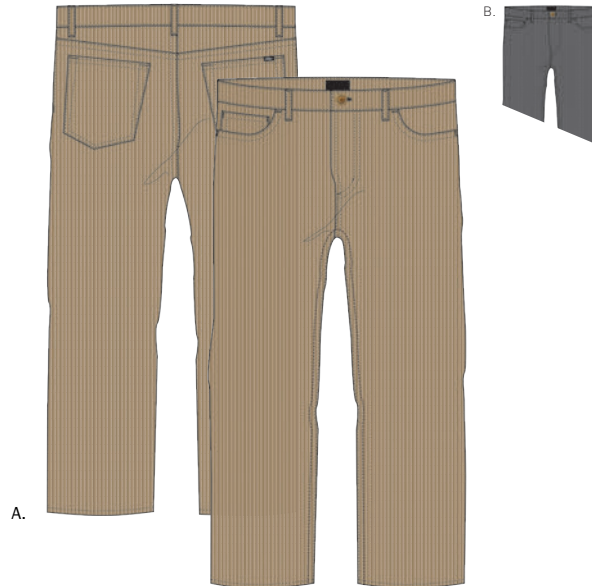


| | COLOR | 28 | 30 | 31 | 32 | 33 | 34 | 36 | 38 |
|----|------------------|----|----|----|----|----|----|----|----|
| A. | DUSTY BLACK | | | | | | | | |
| B. | WASTED GIRL WINE | | | | | | | | |

BENDER CORDUROY PANT

142020077

- Standard fit flooded (shorter inseam) five pocket corduroy pants with button and zipper fly closure at center front
- Features contrast interior details, custom OBEY logo shanks at center front fly closure and novelty logo rivet details throughout
- Includes OBEY specialty labels at exterior back waist and interior waistband
- 100% Cotton



| | COLOR | 28 | 30 | 31 | 32 | 33 | 34 | 36 | 38 |
|----|----------|----|----|----|----|----|----|----|----|
| A. | KHAKI | | | | | | | | |
| B. | CHARCOAL | | | | | | | | |

JUVEE PANT
SKINNY FIT



- A. Comfortable waist, sits at waist
- B. Shorter Rise
- C. Slim through hip and thigh
- D. Skinny leg
- E. Regular inseam & new Flooded inseam (27" based on size 32)
- F. 13.5" leg opening (based on size 32)

DENIM

JUVEE DENIM

142010042

- Skinny fit five pocket stretch denim jeans with button and zipper fly closure at center front
- Features custom OBEY logo shank at waistband, zipper closure at center front and novelty logo rivet details throughout
- Includes OBEY specialty labels at exterior back waistband and interior waistband
- 99% Cotton / 1% Spandex



| | COLOR | 28 | 30 | 31 | 32 | 33 | 34 | 36 | 38 |
|----|-------------|----|----|----|----|----|----|----|----|
| A. | BLACK | | | | | | | | |
| B. | FADED BLACK | | | | | | | | |

JUVEE FLOODED DENIM

142010052

- Skinny fit flooded (shorter inseam) five pocket stretch denim jeans with button and zipper fly closure at center front
- Features custom OBEY logo shank at waistband, zipper closure at center front and novelty logo rivet details throughout
- Includes OBEY specialty labels at exterior back waistband and interior waistband
- 99% Cotton / 1% Spandex



| | COLOR | 28 | 30 | 31 | 32 | 33 | 34 | 36 | 38 |
|----|-------------|----|----|----|----|----|----|----|----|
| A. | FADED BLACK | | | | | | | | |
| B. | BLACK | | | | | | | | |

**NEW THREAT DENIM
SLIM STRAIGHT FIT**



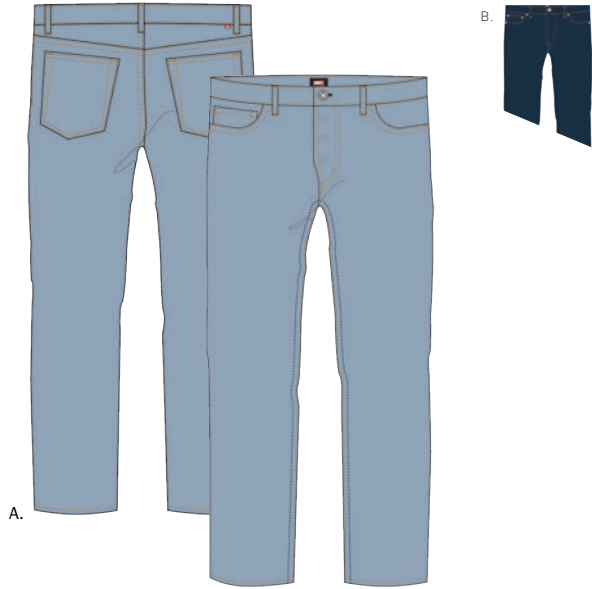
- A. Comfortable waist, sits at hip
- B. Medium comfortable rise
- C. Slim fit through hip and thigh
- D. Straight through legs
- E. 15" leg opening (based on size 32)

DENIM

NEW THREAT DENIM

142010034

- Slim straight fit five pocket stretch denim jeans with button fly closure at center front
- Features custom OBEY logo shanks at center front fly closure with novelty logo rivet details throughout
- Includes OBEY specialty labels at exterior back pocket and interior waistband
- 99% Cotton / 1% Spandex



| | COLOR | 28 | 30 | 31 | 32 | 33 | 34 | 36 | 38 |
|----|--------------|----|----|----|----|----|----|----|----|
| A. | LIGHT INDIGO | | | | | | | | |
| B. | RAW INDIGO | | | | | | | | |

NEW THREAT TWILL PANT II

142010047

- Slim straight fit five pocket twill pants with button fly closure at center front
- Features custom OBEY logo shanks at center front fly closure with novelty logo rivet details throughout
- Includes OBEY specialty labels at exterior back pocket and interior waistband
- 99% Cotton / 1% Spandex



| | COLOR | 28 | 30 | 31 | 32 | 33 | 34 | 36 | 38 |
|----|------------|----|----|----|----|----|----|----|----|
| A. | OFF WHITE | | | | | | | | |
| B. | BLACK | | | | | | | | |
| C. | BONE BROWN | | | | | | | | |

HEADWEAR



HANGMAN BEANIE
100030102
BLACK / NAVY / ARMY

HEADWEAR

SEAL 6 PANEL

100580003

- Unstructured low profile fit
- Nylon 6 panel hat, OBEY embroidered twill patch and adjustable snap closure. OBEY flag label at closure
- 100% Nylon



| | COLOR | O/S | | | | |
|----|-------|-----|--|--|--|--|
| A. | ARMY | | | | | |
| B. | BLACK | | | | | |
| C. | KHAKI | | | | | |

BUNT 6 PANEL

100560002

- Unstructured low profile fit
- Cotton twill 6 panel hat with chain stitched logo, adjustable leather strap closure with brass clip, OBEY flag label at closure
- 100% Cotton



| | COLOR | O/S | | | | |
|----|-------|-----|--|--|--|--|
| A. | WINE | | | | | |
| B. | BLACK | | | | | |
| C. | NAVY | | | | | |

| | COLOR | O/S | | | | |
|----|-------|-----|--|--|--|--|
| D. | SAND | | | | | |
| E. | ARMY | | | | | |

FREEPORT 6 PANEL

100580020

- Unstructured low profile fit
- Low profile 6 panel hat, wool crown with cotton twill visor, OBEY felt applique and adjustable leather strap closure. OBEY flag label at closure
- CROWN: 40% Polyester / 36% Wool / 12% Nylon / 12% Acrylic; VISOR: 100% Cotton



| | COLOR | O/S | | | | |
|----|--------------------|-----|--|--|--|--|
| A. | HEATHER GREY MULTI | | | | | |
| B. | BROWN MULTI | | | | | |
| C. | BLACK MULTI | | | | | |

AFTON 6 PANEL

100580001

- Unstructured low profile fit
- Low profile wool 6 panel hat, OBEY felt applique and adjustable leather strap closure. OBEY flag label at closure
- 60% Wool / 20% Nylon / 20% Acrylic



| | COLOR | O/S | | | | |
|----|--------------|-----|--|--|--|--|
| A. | BLUE | | | | | |
| B. | BLACK | | | | | |
| C. | HEATHER GREY | | | | | |

METROPOLIS 6 PANEL

100580015

- Unstructured low profile fit
- Low profile 6 panel hat, OBEY embroidered logo and adjustable leather strap closure. OBEY flag label at closure
- 100% Polyester



| | COLOR | O/S | | | | |
|----|---------------|-----|--|--|--|--|
| A. | HEATHER TAN | | | | | |
| B. | HEATHER BROWN | | | | | |

SEQUOIA 6 PANEL

100580024

- Unstructured low profile fit
- Low profile polar fleece 6 panel hat, OBEY embroidered logo and webbing closure with plastic clasp. OBEY flag label at closure
- 100% Polyester



| | COLOR | O/S | | | | |
|----|-------------|-----|--|--|--|--|
| A. | BROWN MULTI | | | | | |
| B. | NAVY MULTI | | | | | |

HEADWEAR

TIMES 6 PANEL HAT

100580012

- Unstructured low profile fit
- Low profile twill 6 panel hat, OBEY embroidered logo and adjustable self fabric closure.
- OBEY flag label at closure
- 50% Cotton / 50% Polyester

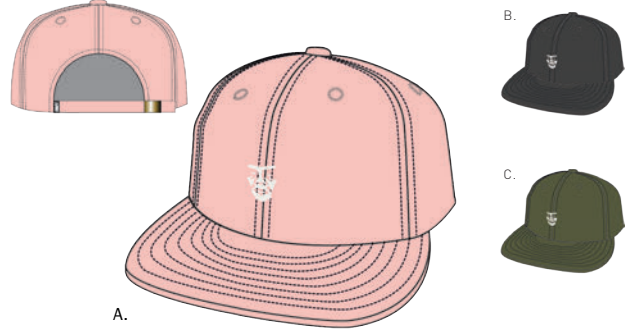


| | COLOR | O/S | | | | |
|----|---------|-----|--|--|--|--|
| A. | BLACK | | | | | |
| B. | CREAM | | | | | |
| C. | CARAMEL | | | | | |

CREEPER 6 PANEL

100580010

- Unstructured low profile fit
- Low profile twill 6 panel hat, OBEY embroidered logo and adjustable self fabric closure.
- OBEY flag label at closure
- 100% Cotton



| | COLOR | O/S | | | | |
|----|-------|-----|--|--|--|--|
| A. | PINK | | | | | |
| B. | BLACK | | | | | |
| C. | ARMY | | | | | |

BEER ME 6 PANEL

100580023

- Unstructured low profile fit
- Low profile T/C twill 6 panel hat, OBEY embroidered patch and adjustable snap closure.
- OBEY flag label at closure
- 60% Cotton / 40% Polyester



| | COLOR | O/S | | | | |
|----|-------|-----|--|--|--|--|
| A. | ARMY | | | | | |
| B. | BLACK | | | | | |
| C. | NAVY | | | | | |

BELMONT 6 PANEL

100580021

- Unstructured low profile fit
- Shadow plaid low profile 6 panel hat, OBEY embroidered logo and adjustable leather strap closure.
- OBEY flag label at closure
- 100% Cotton



| | COLOR | O/S | | | | |
|----|-------------|-----|--|--|--|--|
| A. | RED MULTI | | | | | |
| B. | BLACK MULTI | | | | | |
| C. | NAVY MULTI | | | | | |

CHERRIES 6 PANEL

100580019

- Unstructured low profile fit
- Low profile 6 panel hat, OBEY embroidered logo and adjustable leather strap closure.
- OBEY flag label at closure
- 100% Cotton



| | COLOR | O/S | | | | |
|----|-------|-----|--|--|--|--|
| A. | DENIM | | | | | |
| B. | BLACK | | | | | |
| C. | WHITE | | | | | |

OUTLINE 6 PANEL

100580017

- Unstructured low profile fit
- 21 wale corduroy low profile 6 panel hat, OBEY embroidered logo and adjustable snap closure.
- OBEY flag label at closure
- 100% Cotton



| | COLOR | O/S | | | | |
|----|-------|-----|--|--|--|--|
| A. | NAVY | | | | | |
| B. | BLACK | | | | | |
| C. | WHITE | | | | | |

HEADWEAR

COMMISSIONER SNAPBACK

100570005

- Unstructured mid profile fit
- T/C twill snapback, OBEY merrowed edge twill patch, adjustable snap closure and rope detail. OBEY flag label at closure
- 60% Cotton / 40% Polyester



| | COLOR | O/S | | | | |
|----|-------|-----|--|--|--|--|
| A. | BLACK | | | | | |
| B. | NAVY | | | | | |
| C. | ARMY | | | | | |

STRATFORD SNAPBACK

100570015

- Unconstructed mid profile fit
- Bedford cord snapback, chain stitch OBEY logo and adjustable snap closure. OBEY flag label at closure
- 100% Cotton



| | COLOR | O/S | | | | |
|----|-------|-----|--|--|--|--|
| A. | KHAKI | | | | | |
| B. | BLACK | | | | | |
| C. | NAVY | | | | | |

INFIELD SNAPBACK

100570009

- Unstructured mid profile fit
- Cotton twill 5 panel snapback, OBEY felt patch and adjustable snap closure. OBEY flag label at closure
- 100% Cotton



| | COLOR | O/S | | | | |
|----|-----------|-----|--|--|--|--|
| A. | MILD NAVY | | | | | |
| B. | BLACK | | | | | |
| C. | CARAMEL | | | | | |

NEW FEDERATION SNAPBACK

100570011

- Unstructured mid profile fit
- T/C twill snapback, OBEY merrowed edge twill patch, adjustable snap closure and rope detail. OBEY flag label at closure
- 60% Cotton / 40% Polyester



| | COLOR | O/S | | | | |
|----|-------|-----|--|--|--|--|
| A. | BROWN | | | | | |
| B. | BLACK | | | | | |
| C. | NAVY | | | | | |

CONTORTED SNAPBACK

100570006

- Unstructured mid profile fit
- T/C twill 5 panel snapback, OBEY embroidered logo, visor rope detail and adjustable snap closure. OBEY flag label at closure
- 60% Cotton / 40% Polyester



| | COLOR | O/S | | | | |
|----|-------|-----|--|--|--|--|
| A. | ARMY | | | | | |
| B. | BLACK | | | | | |
| C. | WHITE | | | | | |

LINDEN SNAPBACK

100490020

- Unstructured mid profile fit
- Cotton twill 5 panel snapback, OBEY embroidered logo and adjustable snap closure. OBEY flag label at closure
- 100% Cotton



| | COLOR | O/S | | | COLOR | O/S | | | |
|----|-------|-----|--|--|-------|------|--|--|--|
| A. | KHAKI | | | | C. | NAVY | | | |
| B. | BLACK | | | | D. | ARMY | | | |

HEADWEAR

VOYAGER 5 PANEL HAT

100490030

- Unstructured mid profile fit
- Wool 5 panel strapback with faux suede visor, OBEY embroidered logo and adjustable leather strap closure
- CROWN: 40% Polyester / 36% Wool / 12% Nylon / 12% Acrylic; VISOR: 100% Polyester



A.

| | COLOR | O/S | | | | |
|----|--------------|-----|--|--|--|--|
| A. | DARK OLIVE | | | | | |
| B. | HEATHER GREY | | | | | |
| C. | NAVY | | | | | |

JACKSON 5 PANEL HAT

100490029

- Unstructured mid profile fit
- Wool 5 panel strapback, OBEY logo felt patch and adjustable leather strap closure. OBEY flag label at closure
- 60% Wool / 20% Nylon / 20% Acrylic



A.

| | COLOR | O/S | | | | |
|----|--------------|-----|--|--|--|--|
| A. | NAVY | | | | | |
| B. | HEATHER GREY | | | | | |
| C. | BLACK | | | | | |

NEW FEDERATION SNAPBACK

100490019

- Unstructured mid profile fit
- 16 wale corduroy 5 panel snapback, OBEY embroidered logo, visor rope detail and adjustable snap closure. OBEY flag label at closure
- 100% Cotton



A.

| | COLOR | O/S | | | | |
|----|-------------|-----|--|--|--|--|
| A. | LIGHT CREAM | | | | | |
| B. | BLACK | | | | | |
| C. | NAVY | | | | | |

OBEY PROPAGANDA SNAPBACK

100490028

- Structured mid profile fit
- T/C twill 5 panel snapback, OBEY embroidered felt patch, tray insert for structure and adjustable snap closure. OBEY flag label at closure
- 60% Cotton / 40% Polyester



A.

| | COLOR | O/S | | COLOR | O/S | |
|----|-------|-----|--|-------|----------|--|
| A. | ARMY | | | C. | NAVY | |
| B. | BLACK | | | D. | BURGUNDY | |

BAGLEY SNAPBACK

100490021

- Structured mid profile fit
- T/C twill 5 panel snapback, OBEY embroidered felt patch and adjustable snap closure. OBEY flag label at closure and tray insert for structure
- 60% Cotton / 40% Polyester



A.

| | COLOR | O/S | | COLOR | O/S | |
|----|-------|-----|--|-------|------------|--|
| A. | BROWN | | | C. | NAVY | |
| B. | BLACK | | | D. | BONE BROWN | |

CRASH N BURN SNAPBACK

100490023

- Unstructured mid profile fit
- T/C twill 5 panel snapback, OBEY embroidered merrow edge patch and adjustable snap closure. OBEY flag label at closure
- 60% Cotton / 40% Polyester



A.

| | COLOR | O/S | | | | |
|----|-------|-----|--|--|--|--|
| A. | NAVY | | | | | |
| B. | BLACK | | | | | |
| C. | WHITE | | | | | |

HEADWEAR

OBEY LOFI SNAPBACK

100490027

- Unstructured mid profile fit
- Cotton twill 5 panel snapback, OBEY embroidered logo and adjustable snap closure. OBEY flag label at closure
- 100% Cotton



| | COLOR | O/S | | COLOR | O/S |
|----|-------|-----|----|-------|-----|
| A. | NAVY | | C. | WHITE | |
| B. | BLACK | | D. | ARMY | |

GOOD LUCK SNAPBACK

100490024

- Unstructured mid profile fit
- T/C twill 5 panel snapback, OBEY embroidered merrow edge patch and adjustable snap closure. OBEY flag label at closure
- 60% Cotton / 40% Polyester



| | COLOR | O/S | | COLOR | O/S |
|----|-------|-----|--|-------|-----|
| A. | BLACK | | | | |
| B. | WHITE | | | | |
| C. | NAVY | | | | |

OBEY LEGS SNAPBACK

100570019

- Structured mid profile fit
- T/C twill 5 panel snapback with tray insert, OBEY embroidered merrow edge patch and adjustable snap closure. OBEY flag label at closure
- 60% Cotton / 40% Polyester



| | COLOR | O/S | | COLOR | O/S |
|----|-------|-----|--|-------|-----|
| A. | BLACK | | | | |
| B. | WHITE | | | | |
| C. | NAVY | | | | |

TEARDROP SNAPBACK

100490022

- Unstructured mid profile fit
- T/C twill 5 panel snapback, OBEY embroidered merrowed edge patch, visor rope detail and adjustable snap closure. OBEY flag label at closure
- 60% Cotton / 40% Polyester



| | COLOR | O/S | | COLOR | O/S |
|----|-------|-----|--|-------|-----|
| A. | WHITE | | | | |
| B. | BLACK | | | | |
| C. | NAVY | | | | |

UNUSUAL ACTIVITY SNAPBACK

100490026

- Unstructured mid profile fit
- Nylon tason 5 panel snapback, OBEY original screen print and adjustable snap closure. OBEY flag label at closure
- 100% Nylon



| | COLOR | O/S | | COLOR | O/S |
|----|-------|-----|--|-------|-----|
| A. | WHITE | | | | |
| B. | BLACK | | | | |

DEVIL DEAL SNAPBACK

100490025

- Unstructured mid profile fit
- Nylon satin 5 panel snapback, OBEY original screen print and adjustable snap closure. OBEY flag label at closure
- 100% Nylon



| | COLOR | O/S | | COLOR | O/S |
|----|-------|-----|--|-------|-----|
| A. | BLACK | | | | |
| B. | WHITE | | | | |

HEADWEAR

GIANT TRUCKER

- Standard trucker fit
- Twill trucker snapback with mesh backing, merrowed edge OBEY woven patch, adjustable snap closure and rope detail. OBEY flag label at closure
- 60% Cotton / 40% Polyester

100500004



| | COLOR | O/S | | | | |
|----|--------|-----|--|--|--|--|
| A. | BLACK | | | | | |
| B. | SPRUCE | | | | | |
| C. | NAVY | | | | | |

NEW FEDERATION TRUCKER

- Standard trucker fit
- Twill trucker snapback with mesh backing, merrowed edge OBEY woven patch and adjustable snap closure. OBEY flag label at closure
- 60% Cotton / 40% Polyester

100500005



| | COLOR | O/S | | | | |
|----|-------|-----|--|--|--|--|
| A. | RED | | | | | |
| B. | BLACK | | | | | |
| C. | NAVY | | | | | |

SHEFFIELD TRUCKER

- Standard trucker fit
- Twill trucker snapback with mesh backing and tray insert, merrowed edge OBEY woven patch, adjustable snap closure and rope detail. OBEY flag label at closure
- 60% Cotton / 40% Polyester

100500006



| | COLOR | O/S | | | | |
|----|----------|-----|--|--|--|--|
| A. | CHARCOAL | | | | | |
| B. | BLACK | | | | | |
| C. | NAVY | | | | | |

HEADWEAR

WORLDWIDE SEAL 5 PANEL

100490013

- Unstructured twill 5 panel camp hat, OBEY woven label and webbing closure with plastic clip. OBEY flag label at closure.
- 60% Cotton / 40% Polyester



| COLOR | | O/S | | COLOR | | O/S | |
|-------|-------|-----|--|-------|-------|-----|--|
| A. | NAVY | | | C. | ARMY | | |
| B. | BLACK | | | D. | KHAKI | | |

PETER 5 PANEL

100490016

- Unstructured bedford cord 5 panel camp hat, OBEY woven patch and webbing closure with plastic clasp. OBEY flag label at closure.
- 100% Cotton



| COLOR | | O/S | | COLOR | | O/S | |
|-------|-------|-----|--|-------|--|-----|--|
| A. | ARMY | | | | | | |
| B. | BLACK | | | | | | |
| C. | NAVY | | | | | | |

HAWTHORNE 5 PANEL

100490032

- Unstructured wool 5 panel camp hat with cotton twill visor. OBEY embroidered logo and webbing closure with plastic clasp. OBEY flag label at closure
- CROWN: 50% Wool / 50% Polyester; VISOR: 100% Cotton



| COLOR | | O/S | | COLOR | | O/S | |
|-------|---------------|-----|--|-------|--|-----|--|
| A. | BROWN MULTI | | | | | | |
| B. | BLACK MULTI | | | | | | |
| C. | OATMEAL MULTI | | | | | | |

BURNSIDE 5 PANEL

100490031

- Unstructured wool herringbone twill 5 panel camp hat, OBEY embroidered logo and webbing closure with plastic clasp. OBEY flag label at closure
- 70% Polyester / 30% Wool



| COLOR | | O/S | | COLOR | | O/S | |
|-------|--------------|-----|--|-------|--|-----|--|
| A. | BLACK | | | | | | |
| B. | BROWN | | | | | | |
| C. | HEATHER GREY | | | | | | |

MORRISON 5 PANEL

100490033

- Unstructured polar fleece 5 panel camp hat, OBEY embroidered logo and webbing closure with plastic clasp. OBEY flag label at closure
- 100% Polyester



| COLOR | | O/S | | COLOR | | O/S | |
|-------|--------------|-----|--|-------|--|-----|--|
| A. | HEATHER GREY | | | | | | |
| B. | BLACK | | | | | | |
| C. | NAVY | | | | | | |

HEADWEAR

HANGMAN BEANIE

- Extra shallow fit, rib knit roll cuff beanie with OBEY embroidered logo
- 100% Acrylic

100030102

ARROYO BEANIE

- Extra shallow fit, color mixed rib knit roll cuff beanie with OBEY embroidered logo
- 100% Acrylic

100030108



A.

| | COLOR | O/S | | COLOR | O/S |
|----|-----------|-----|----|--------------|-----|
| A. | HOT PINK | | D. | NAVY | |
| B. | BLACK | | E. | HEATHER GREY | |
| C. | DARK ARMY | | F. | BONE BROWN | |



A.

| | COLOR | O/S | | | | | |
|----|-------------|-----|--|--|--|--|--|
| A. | BLACK MULTI | | | | | | |
| B. | NAVY MULTI | | | | | | |
| C. | ARMY MULTI | | | | | | |

AYU II BEANIE

- Shallow fit, 2x2 rib knit roll cuff beanie with OBEY leather clip label
- 100% Acrylic

100030110

LIONEL BEANIE

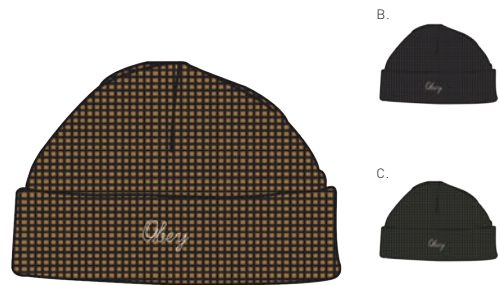
- Extra shallow fit, waffle knit roll cuff beanie with OBEY chainstitch embroidered logo
- 100% Acrylic

100030103



A.

| | COLOR | O/S | | | | |
|----|--------------|-----|--|--|--|--|
| A. | BLACK | | | | | |
| B. | HEATHER GREY | | | | | |
| C. | MARSALA | | | | | |



A.

| | COLOR | O/S | | | | |
|----|------------|-----|--|--|--|--|
| A. | BONE BROWN | | | | | |
| B. | BLACK | | | | | |
| C. | ARMY | | | | | |

AUGUSTA II BEANIE

- Shallow fit, rib knit roll cuff beanie with OBEY embroidered patch
- 100% Acrylic

100030109



A.

| | COLOR | O/S | | | | |
|----|-------|-----|--|--|--|--|
| A. | NAVY | | | | | |
| B. | BLACK | | | | | |
| C. | RED | | | | | |

HEADWEAR AND SCARVES

GOOD LUCK BEANIE

100030105

- Extra shallow fit, rib knit roll cuff beanie with OBEY embroidered patch
- 100% Acrylic



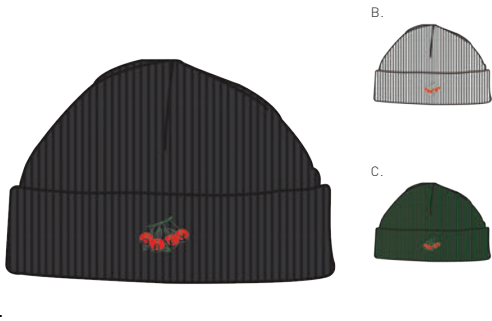
A.

| | COLOR | O/S | | | | |
|----|--------------|-----|--|--|--|--|
| A. | HEATHER GREY | | | | | |
| B. | BLACK | | | | | |
| C. | NAVY | | | | | |

CHERRY BEANIE

100030106

- Extra shallow fit, rib knit roll cuff beanie with OBEY embroidered logo
- 100% Acrylic



A.

| | COLOR | O/S | | | | |
|----|-------|-----|--|--|--|--|
| A. | BLACK | | | | | |
| B. | WHITE | | | | | |
| C. | ARMY | | | | | |

BEER ME BEANIE

100030104

- Extra shallow fit, rib knit roll cuff beanie with OBEY embroidered patch
- 68% Cotton / 32% Acrylic



A.

| | COLOR | O/S | | | | |
|----|-------|-----|--|--|--|--|
| A. | ARMY | | | | | |
| B. | BLACK | | | | | |
| C. | NAVY | | | | | |

CREEPER POM BEANIE

100030107

- Chunky knit pom pom beanie, custom OBEY jacquard artwork
- 60% Acrylic / 40% Cotton



A.

| | COLOR | O/S | | | | |
|----|-------|-----|--|--|--|--|
| A. | BLACK | | | | | |

CREEPER SCARF

100240012

- Comfortable scarf with an unique OBEY original pattern
- Chunky yarn knit and fringes at both end
- 60% Cotton / 40% Acrylic



A.

| | COLOR | O/S | | | | |
|----|-------|-----|--|--|--|--|
| A. | BLACK | | | | | |

ACCESSORIES



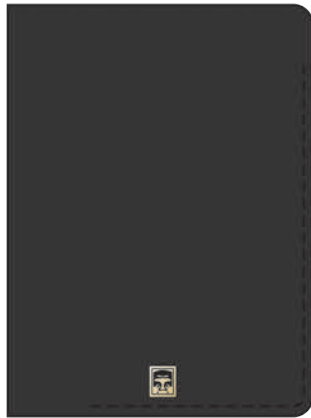
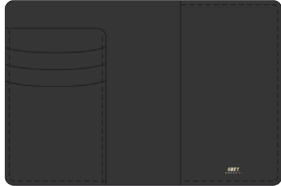
CHERRY BIFOLD WALLET
100310095

ACCESSORIES

VANDAL PASSPORT WALLET

100310089

- Passport wallet with multiple card holder and large insert pockets for passport and boarding pass
- OBEY gold foil branding and OBEY original gold rivet
- 100% Leather



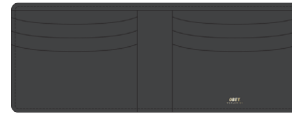
A.

| | COLOR | O/S | | | | |
|----|-------|-----|--|--|--|--|
| A. | BLACK | | | | | |

VANDAL BI-FOLD WALLET

100310088

- Bi fold wallet with multiple card holder and bill insert pocket
- OBEY gold foil branding and OBEY original gold rivet
- 100% Leather



A.

| | COLOR | O/S | | | | |
|----|-------|-----|--|--|--|--|
| A. | BLACK | | | | | |

VANDAL ID WALLET

100310087

- ID wallet with multiple card holder
- OBEY original gold rivet branding
- 100% Leather



A.

| | COLOR | O/S | | | | |
|----|-------|-----|--|--|--|--|
| A. | BLACK | | | | | |

VANDAL KEY CHAIN

100160015

- Keychain with gold finish hardware
- OBEY original gold rivet branding
- 100% Leather



A.

| | COLOR | O/S | | | | |
|----|-------|-----|--|--|--|--|
| A. | BLACK | | | | | |

ACCESSORIES

REVOLT RED JUVEE BACKPACK

100010075

- Backpack with an original OBEY red label with zippered front pocket and internal laptop sleeve, large main compartment and padded shoulder straps for comfort
- Chrome finished hardware and leather zipper pulls
- MAIN: 100% Polyester; CONTRAST: 100% Nylon



A.

| | COLOR | O/S | | | | |
|----|-------|-----|--|--|--|--|
| A. | BLACK | | | | | |

REVOLT RED DAY PACK

100010077

- Day pack with an original OBEY red label, inner padded notebook sleeve with velcro closure
- Outside front pocket and chrome finished hardware with leather zipper pulls
- MAIN: 100% Polyester; CONTRAST: 100% Nylon



A.

| | COLOR | O/S | | | | |
|----|-------|-----|--|--|--|--|
| A. | BLACK | | | | | |

REVOLT RED ROLLTOP BAG

100010076

- Roll top backpack with contrast paneling and shoulder straps and side zipper access. Inner padded notebook sleeve with velcro closure
- Multiple inner and outer pockets with chrome hardware. Front skate holder webbing straps with sturdy plastic closure and OBEY red label and leather zipper pulls
- MAIN: 100% Polyester; CONTRAST: 100% Nylon



A.

| | COLOR | O/S | | | | |
|----|-------|-----|--|--|--|--|
| A. | BLACK | | | | | |

REVOLT RED SLING BAG

100010079

- Original OBEY red label sling bag with multiple pockets and a sturdy plastic closure webbing strap to go comfortably over the shoulders or waist
- Chrome finished hardware and leather zipper pulls
- 100% Polyester



A.

| | COLOR | O/S | | | | |
|----|-------|-----|--|--|--|--|
| A. | BLACK | | | | | |

ACCESSORIES

REVOLT RED WASH BAG

100010078

- Travel wash bag with an original OBEY red label, inner zipped pocket and outer D-Ring loop
- Chrome finished hardware and leather zipper pulls
- MAIN: 100% Polyester; CONTRAST: 100% Nylon



A.

| | COLOR | O/S | | | | |
|----|-------|-----|--|--|--|--|
| A. | BLACK | | | | | |

REVOLT RED COIN POUCH

100310079

- Coin pouch with an original OBEY red label
- Chrome hardware and exterior D-Ring and leather zipper pull
- 100% Polyester



A.

| | COLOR | O/S | | | | |
|----|-------|-----|--|--|--|--|
| A. | BLACK | | | | | |

REVOLT RED TRI-FOLD WALLET

100310080

- Tri-fold wallet with multiple card slots and clear ID window and exterior OBEY red label
- Chrome key ring and black grosgrain edging
- 100% Polyester



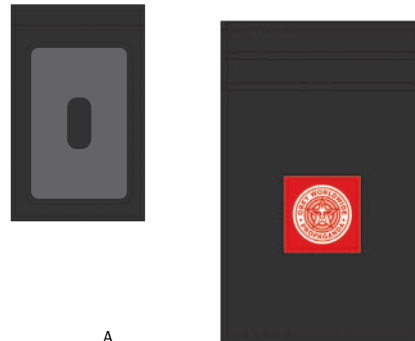
A.

| | COLOR | O/S | | | | |
|----|-------|-----|--|--|--|--|
| A. | BLACK | | | | | |

REVOLT RED ID WALLET

100310081

- ID wallet with multiple card slots, clear ID window and exterior OBEY red label
- 100% Polyester



A.

| | COLOR | O/S | | | | |
|----|-------|-----|--|--|--|--|
| A. | BLACK | | | | | |

REVOLT RED KEY CHAIN

100160014

- Keychain with webbing backing, chrome finish hardware and snap closure
- OBEY original red label
- 100% Polyester



A.

| | COLOR | O/S | | | | |
|----|-------|-----|--|--|--|--|
| A. | BLACK | | | | | |

ACCESSORIES

GENTRY DENIM BI-FOLD WALLET

100310091

- Colored block denim and PU mix bi-fold with multiple cards and bills inserts with clear plastic ID window
- Exterior and interior OBEY gold foil logo
- MAIN: 100% Polyurethane; CONTRAST: 100% Cotton



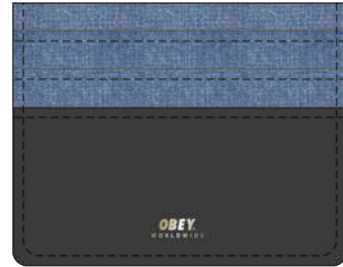
A.

| | COLOR | O/S | | | | |
|----|---------------|-----|--|--|--|--|
| A. | DENIM / BLACK | | | | | |

GENTRY DENIM ID WALLET

100310092

- Colored block denim and PU mix ID wallet with multiple cards slots and bill insert
- Exterior OBEY gold foil logo
- MAIN: 100% Polyurethane; CONTRAST: 100% Cotton



A.

| | COLOR | O/S | | | | |
|----|---------------|-----|--|--|--|--|
| A. | DENIM / BLACK | | | | | |

GENTRY DENIM ZIP AROUND WALLET

100310093

- Colored block denim and PU mix zip around wallet. Multiple cards and bills inserts
- Exterior and interior OBEY gold foil logo and shiny nickel hardware
- MAIN: 100% Polyurethane; CONTRAST: 100% Cotton



A.

| | COLOR | O/S | | | | |
|----|---------------|-----|--|--|--|--|
| A. | DENIM / BLACK | | | | | |

ACCESSORIES

GENTRY BI-FOLD WALLET

100310070

- Faux leather bi-fold wallet with clear plastic ID window and multiple card inserts
- Interior and exterior OBEY gold foil logo
- 100% Polyurethane



B.



GENTRY ID WALLET

100310071

- Faux leather ID wallet with multiple card inserts and bills insert center pocket
- Exterior OBEY gold foil logo
- 100% Polyurethane



B.



A.



A.

| | COLOR | O/S | | | | |
|----|-------|-----|--|--|--|--|
| A. | BLACK | | | | | |
| B. | GREY | | | | | |

| | COLOR | O/S | | | | |
|----|-------|-----|--|--|--|--|
| A. | GREY | | | | | |
| B. | BLACK | | | | | |

GENTRY II ZIP AROUND WALLET

100310090

- Faux leather zip around wallet with multiple card and bills inserts
- Interior and exterior OBEY gold foil logo and shiny nickel hardware
- 100% Polyurethane



B.



CHERRY BI-FOLD WALLET

100310095

- Bi-fold wallet with multiple cards and bills inserts and clear plastic ID window
- Exterior cherry screen print and interior OBEY gold foil logo
- 100% Polyurethane



A.



A.

| | COLOR | O/S | | | | |
|----|-------|-----|--|--|--|--|
| A. | GREY | | | | | |
| B. | BLACK | | | | | |

| | COLOR | O/S | | | | |
|----|-------|-----|--|--|--|--|
| A. | BLACK | | | | | |

ACCESSORIES

SMALL TALK TOTE

- Large one compartment tote bag with natural webbing handle
- Features original OBEY artwork
- 20" x 15" x 5"
- 100% Cotton



100551328



| | COLOR | O/S | | | | |
|----|---------|-----|--|--|--|--|
| A. | BLACK | | | | | |
| B. | NATURAL | | | | | |

OBEY GREEN POWER TOTE

- Large one compartment tote bag with natural webbing handle
- Features original OBEY artwork
- 20" x 15" x 5"
- 100% Cotton



100551321



| | COLOR | O/S | | | | |
|----|---------|-----|--|--|--|--|
| A. | NATURAL | | | | | |
| B. | BLACK | | | | | |

ACCESSORIES

OBEY JUMBLED PILLOW

- Soft cotton pillow with OBEY jumbled logo and OBEY red flag label
- 100% Cotton

100210029

EIGHTY NINE PILLOW

- Soft cotton pillow with OBEY icon face logo and OBEY red flag label
- 100% Cotton

100210028



A.

| | COLOR | O/S | | | | |
|----|-------|-----|--|--|--|--|
| A. | BLACK | | | | | |



A.

| | COLOR | O/S | | | | |
|----|-------|-----|--|--|--|--|
| A. | BLACK | | | | | |

ACCESSORIES

COOPER II SOCKS

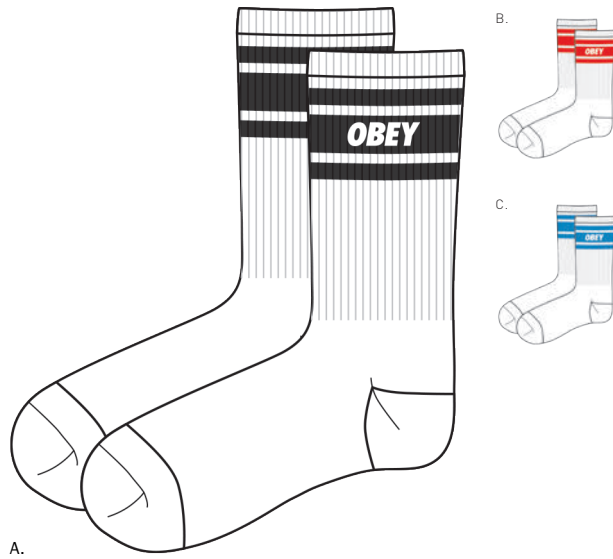
- Athletic socks with comfortable french terry footing
- OBEY original logo jacquard
- 80% Cotton / 18% Nylon / 2% Spandex

100260093

COOPER DEUCE SOCKS

- Athletic socks with comfortable french terry footing
- OBEY original logo jacquard
- 80% Cotton / 18% Nylon / 2% Spandex

100260094



| | COLOR | O/S | | | | |
|----|---------------|-----|--|--|--|--|
| A. | WHITE / BLACK | | | | | |
| B. | WHITE / RED | | | | | |
| C. | WHITE / BLUE | | | | | |



| | COLOR | O/S | | | | |
|----|---------------|-----|--|--|--|--|
| A. | BLACK / WHITE | | | | | |
| B. | NAVY / RED | | | | | |
| C. | RED / WHITE | | | | | |

BALLPOINT SOCKS

- Athletic socks with comfortable french terry footing
- OBEY original logo jacquard in contrast color
- 80% Cotton / 18% Nylon / 2% Spandex

100260100



| | COLOR | O/S | | | | |
|----|-------|-----|--|--|--|--|
| A. | BLACK | | | | | |
| B. | NAVY | | | | | |

ACCESSORIES

OBEY LOFI SOCKS

- Athletic socks with comfortable french terry footing
- OBEY original logo jacquard in contrast color
- 80% Cotton / 18% Nylon / 2% Spandex

100260107

CHERRY SOCKS

- Athletic socks with comfortable french terry footing
- OBEY original Cherry jacquard in contrast colors
- 80% Cotton / 18% Nylon / 2% Spandex

100260098



| | COLOR | O/S | | | | |
|----|---------|-----|--|--|--|--|
| A. | MAGENTA | | | | | |
| B. | BLACK | | | | | |

| | COLOR | O/S | | | | |
|----|-------|-----|--|--|--|--|
| A. | WHITE | | | | | |
| B. | BLACK | | | | | |

CREEPER SOCKS

- Athletic socks comfortable french terry footing
- OBEY Creeper jacquard and screened logo at foot
- 80% Cotton / 18% Nylon / 2% Spandex

100260091



| | COLOR | O/S | | | | |
|----|---------|-----|--|--|--|--|
| A. | BLACK | | | | | |
| B. | MAGENTA | | | | | |

ACCESSORIES

SMALL TALK PIN

- OBEY Small Talk pin with gold alloy finish enamel colored metal
- 2 locking backs to keep pin in place
- 100% Alloy

100220020

OBEY LEGS PIN

- OBEY Legs pin with gold alloy finish enamel colored metal
- 2 locking backs to keep pin in place
- 100% Alloy

100220021



A.



A.

| | COLOR | O/S | | | | |
|----|-------|-----|--|--|--|--|
| A. | BLACK | | | | | |

| | COLOR | O/S | | | | |
|----|-------|-----|--|--|--|--|
| A. | RED | | | | | |

O.B.E.Y. PIN

- O.B.E.Y. pin with silver alloy finish enamel colored metal
- 2 locking backs to keep pin in place
- 100% Alloy

100220022

CHERRY PIN

- OBEY Cherry pin with alloy finish enamel colored metal
- 2 locking backs to keep pin in place
- 100% Alloy

100220019



A.



A.

| | COLOR | O/S | | | | |
|----|-------|-----|--|--|--|--|
| A. | BLACK | | | | | |

| | COLOR | O/S | | | | |
|----|-------|-----|--|--|--|--|
| A. | RED | | | | | |

PIN

CREEPER PIN

- OBEY Creeper pin with alloy finish enamel colored metal
- 2 locking backs to keep pin in place
- 100% Alloy

100220013

TEAR DROP PIN

- OBEY Tear Drop pin with alloy finish enamel colored metal
- 2 locking backs to keep pin in place
- 100% Alloy

100220014



A.



A.

| | COLOR | O/S | | | | |
|----|-------|-----|--|--|--|--|
| A. | WHITE | | | | | |

| | COLOR | O/S | | | | |
|----|-------|-----|--|--|--|--|
| A. | RED | | | | | |

WHEELS PIN

- OBEY Wheels pin with alloy finish enamel colored metal
- 2 locking backs to keep pin in place
- 100% Alloy

100220015

LIFE IS HELL PIN

- OBEY Life is Hell pin with alloy finish enamel colored metal
- 2 locking backs to keep pin in place
- 100% Alloy

100220016



A.



A.

| | COLOR | O/S | | | | |
|----|-------|-----|--|--|--|--|
| A. | BLACK | | | | | |

| | COLOR | O/S | | | | |
|----|-------|-----|--|--|--|--|
| A. | BLACK | | | | | |

ESSENTIALS

STICKER PACK

100270000

- Assorted stickers for the OBEY fiends. Spread it!



A.

| | COLOR | O/S | | | | |
|----|----------|-----|--|--|--|--|
| A. | ASSORTED | | | | | |

STICKER PACK 2

100270001

- Assorted stickers for the OBEY fiends. Spread it!



A.

| | COLOR | O/S | | | | |
|----|----------|-----|--|--|--|--|
| A. | ASSORTED | | | | | |

SUPPLY AND DEMAND BOOK

100070000

- Supply & Demand, The Art of Shepard Fairey-20th Anniversary Edition expands upon the previous version of this book and adds 100 new pages of illustrations and text to showcase Fairey's entire body of work, a massive retrospective covering 20 colorful years



A.

| | COLOR | O/S | | | | |
|----|----------|-----|--|--|--|--|
| A. | ASSORTED | | | | | |

COVERT TO OVERT BOOK

326000035M

- OBEY: Covert to Overt showcases Shepard Fairey's evolution from works on paper to grander art installations, cross-cultural artworks, and music/art collaborations. The book also includes his ubiquitous streetwear and chronicles his return to public artworks. His signature blend of politics, street culture, and art makes Fairey unlike any other subculture/street artist working today.
- This book showcases the significant amount of art he has created the last several years: street murals, mixed-media installations, art/music events, countless silk screens, and work from his extremely successful OBEY brand.



A.

| | COLOR | O/S | | | | |
|----|----------|-----|--|--|--|--|
| A. | ASSORTED | | | | | |

VISUAL PROPAGANDA

The visual propaganda collection offers a variety of obey pieces to complement the brand in-store. These items can be used in various applications from table tops to wall mounting.



LEATHER ICON FACE TABLE TOPPER
326000031

P.O.P.

LEATHER ICON FACE TABLE TOPPER

326000031

- Black Leather table top display featuring a screen printed, double sided OBEY Icon Face. Sits on a black powder coated metal base.
- 10" Tall, 7" wide (25.4 cm x 17.78 cm)



A.

| | COLOR | O/S | | | | |
|----|-------|-----|--|--|--|--|
| A. | BLACK | | | | | |

PAINT CAN WITH STAND POP

326000023

- 14" tall
- Standard 1 gallon paint can on a steel stand. Featuring OBEY Durable Paints label.
- Dripping red paint around the edge, and paint brush affixed to top
- Each piece will vary due to drips of paint



A.

| | COLOR | O/S | | | | |
|----|----------|-----|--|--|--|--|
| A. | ASSORTED | | | | | |

SEWING MACHINE TABLE TOPPER

326000040

- Features women's label artwork and base that can be used for future POP inserts
- 11 1/2" H x 7"W



A.

| | COLOR | O/S | | | | |
|----|----------|-----|--|--|--|--|
| A. | ASSORTED | | | | | |

INDIGO WOOD TABLE TOPPER

326000032

- White Oak, wood table top display featuring OBEY indigo logo
- White painted edging cleanly finishes the piece
- Base painted white and features stainless OBEY branding
- 12" H x 7"W



A.

| | COLOR | O/S | | | | |
|----|----------|-----|--|--|--|--|
| A. | ASSORTED | | | | | |

P.O.P.

WOMEN'S WOOD TABLE STAND (SHORT)

326000056

- Boutique friendly table display featuring minimal design and OBEY Worldwide logo



A.

| | COLOR | O/S | | | | |
|----|----------|-----|--|--|--|--|
| A. | ASSORTED | | | | | |

350.ORG AWARENESS INSERT

326000055

- Insert for OBEY Awareness Base #326000004
- Features art and description of 350.org Awareness campaign.



A.

| | COLOR | O/S | | | | |
|----|----------|-----|--|--|--|--|
| A. | ASSORTED | | | | | |

OBEY AWARENESS BASE

326000004

- This OBEY AWARENESS display is comprised of a slotted poplar base and a brushed aluminum plaque. The base stands 10" wide and 3" in depth. The overall display measures at just under 15". The base features metallic OBEY lettering on both sides.
- A forward slot allows for an interchangeable piece featuring the OBEY AWARENESS program of the season
- Does not include seasonal insert



A.

| | COLOR | O/S | | | | |
|----|----------|-----|--|--|--|--|
| A. | ASSORTED | | | | | |

OBEY PIN PACK

326000033

- 24 1" pins featuring seasonal OBEY artwork. Perfect for hooking customers up at checkout.

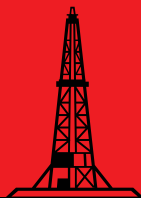


A.

| | COLOR | O/S | | | | |
|----|----------|-----|--|--|--|--|
| A. | ASSORTED | | | | | |

STOP FUNDING FOSSILS

DON'T LET MONEY FUEL THE CLIMATE CRISIS



[350.ORG](https://350.org)



[#DIVEST](https://www.instagram.com/divest)



DIVEST FROM

FOSSIL FUELS



OBEY AWARENESS:
350.ORG
 DON'T LET MONEY FUEL THE CLIMATE CRISIS

The number 350 means climate safety: to preserve a livable planet, scientists tell us we must reduce the amount of CO2 in the atmosphere from its current level of 400 parts per million to below 350 ppm.

We believe that a global grassroots movement can hold our leaders accountable to the realities of science and the principles of justice. That movement is rising from the bottom up all over the world, and is uniting to create the solutions that will ensure a better future for all. 350.org was founded by a group of university friends in the U.S. along with author Bill McKibben, who wrote one of the first books on global warming for the general public.

When we started organizing in 2008, we saw climate change as the most important issue facing humanity — but climate action was mired in politics and all but stalled. We didn't know how to fix things, but we knew that one missing ingredient was a climate movement that reflected the scale of the crisis.

So we started organizing coordinated days of action that linked activists and organizations around the world, including the International Day of Climate Action in 2009, the Global Work Party in 2010, Moving Planet in 2011, and Climate Impacts Day in 2012. We held the "world's biggest art installation" and "the most widespread day of political action in the planet's history." We figured that if we were going to be a movement, then we had to start acting like one.

Today, 350.org works in almost every country in the world on campaigns like fighting coal power plants in India, stopping the Keystone XL pipeline in the U.S, and divesting public institutions everywhere from fossil fuels. All of our work leverages people power to dismantle the influence and infrastructure of the fossil fuel industry, and to develop people-centric solutions to the climate crisis.

For more information, visit their website: <http://350.org/>

350.ORG AWARENESS 165361280

| | | | | | |
|------------------|----|----|----|-----|------|
| SHIPPED BY COLOR | S: | M: | L: | XL: | XXL: |
|------------------|----|----|----|-----|------|



BLACK

350.ORG AWARENESS 163081280

| | | | | | |
|------------------|----|----|----|-----|------|
| SHIPPED BY COLOR | S: | M: | L: | XL: | XXL: |
|------------------|----|----|----|-----|------|



BLACK

OBEY
 AWARENESS

OBEY AWARENESS WAS FOUNDED IN 2007 AS A WAY TO EDUCATE AND FUNDRAISE FOR CAUSES AND ORGANIZATIONS OBEY SUPPORTS. IT IS A UNIQUE PROGRAM IN THAT IT CONSTANTLY EVOLVES TO SUPPORT IMPORTANT EMERGING ISSUES AND ORGANIZATIONS. EACH SEASON THE OBEY CLOTHING LINE FEATURES DEDICATED PRODUCT TO RAISE FUNDS FOR THESE CAUSES. ALL PROFITS GENERATED FROM THE SALE OF OBEY AWARENESS PRODUCT ARE DONATED TO THE CAUSE AT HAND. WE ENCOURAGE YOU TO LEARN MORE AND MAKE A DIFFERENCE.

PREMIUM / BASIC



PREMIUM TEE
PYRAMID OF DISSENT
165361339

PREMIUM TEES / BASIC

PREMIUM: Regular fit short sleeve tee with a set in rib neck trim. Made in extra soft lightweight cotton. 100% Cotton; HEATHER GREY: 90% Cotton / 10% Polyester

BASIC: Regular fit crew neck tee with rib neck trim. Made in a heavyweight cotton. 100% Cotton; HEATHER GREY: 90% Cotton / 10% Polyester



WHITE

DECODING DISINFORMATION SINCE 1989

165361314

| | | | | | |
|------------------|----|----|----|-----|------|
| SHIPPED BY COLOR | S: | M: | L: | XL: | XXL: |
|------------------|----|----|----|-----|------|



DECODING DISINFORMATION SINCE 1989

163081314

| | | | | | |
|------------------|----|----|----|-----|------|
| SHIPPED BY COLOR | S: | M: | L: | XL: | XXL: |
|------------------|----|----|----|-----|------|

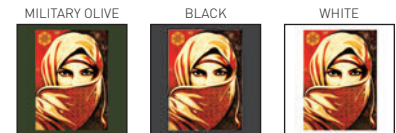


MILITARY OLIVE

UNIVERSAL PERSONHOOD 2

165361316

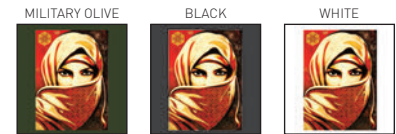
| | | | | | |
|------------------|----|----|----|-----|------|
| SHIPPED BY COLOR | S: | M: | L: | XL: | XXL: |
|------------------|----|----|----|-----|------|



UNIVERSAL PERSONHOOD 2

163081316

| | | | | | |
|------------------|----|----|----|-----|------|
| SHIPPED BY COLOR | S: | M: | L: | XL: | XXL: |
|------------------|----|----|----|-----|------|



WHITE

PYRAMID OF DISSENT

165361339

| | | | | | |
|------------------|----|----|----|-----|------|
| SHIPPED BY COLOR | S: | M: | L: | XL: | XXL: |
|------------------|----|----|----|-----|------|



PYRAMID OF DISSENT

163081339

| | | | | | |
|------------------|----|----|----|-----|------|
| SHIPPED BY COLOR | S: | M: | L: | XL: | XXL: |
|------------------|----|----|----|-----|------|



PREMIUM TEES / BASIC

PREMIUM: Regular fit short sleeve tee with a set in rib neck trim. Made in extra soft lightweight cotton. 100% Cotton; HEATHER GREY: 90% Cotton / 10% Polyester

BASIC: Regular fit crew neck tee with rib neck trim. Made in a heavyweight cotton. 100% Cotton; HEATHER GREY: 90% Cotton / 10% Polyester

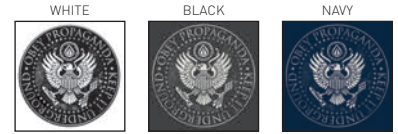


WHITE

OIL EAGLE

165361296

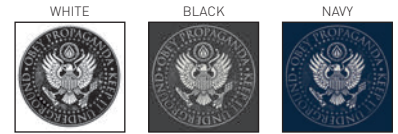
| | | | | | |
|------------------|----|----|----|-----|------|
| SHIPPED BY COLOR | S: | M: | L: | XL: | XXL: |
|------------------|----|----|----|-----|------|



OIL EAGLE

163081296

| | | | | | |
|------------------|----|----|----|-----|------|
| SHIPPED BY COLOR | S: | M: | L: | XL: | XXL: |
|------------------|----|----|----|-----|------|



NAVY

SMASH PASSIVISM

165361295

| | | | | | |
|------------------|----|----|----|-----|------|
| SHIPPED BY COLOR | S: | M: | L: | XL: | XXL: |
|------------------|----|----|----|-----|------|



SMASH PASSIVISM

163081295

| | | | | | |
|------------------|----|----|----|-----|------|
| SHIPPED BY COLOR | S: | M: | L: | XL: | XXL: |
|------------------|----|----|----|-----|------|



HEATHER GREY

FALLEN ANGELS

165361286

| | | | | | |
|------------------|----|----|----|-----|------|
| SHIPPED BY COLOR | S: | M: | L: | XL: | XXL: |
|------------------|----|----|----|-----|------|



FALLEN ANGELS

163081286

| | | | | | |
|------------------|----|----|----|-----|------|
| SHIPPED BY COLOR | S: | M: | L: | XL: | XXL: |
|------------------|----|----|----|-----|------|



PREMIUM TEES / BASIC

PREMIUM: Regular fit short sleeve tee with a set in rib neck trim. Made in extra soft lightweight cotton. 100% Cotton; HEATHER GREY: 90% Cotton / 10% Polyester

BASIC: Regular fit crew neck tee with rib neck trim. Made in a heavyweight cotton. 100% Cotton; HEATHER GREY: 90% Cotton / 10% Polyester



NAVY

EDGE OF DESTRUCTION

165361285

| | | | | | |
|------------------|----|----|----|-----|------|
| SHIPPED BY COLOR | S: | M: | L: | XL: | XXL: |
|------------------|----|----|----|-----|------|



EDGE OF DESTRUCTION

163081285

| | | | | | |
|------------------|----|----|----|-----|------|
| SHIPPED BY COLOR | S: | M: | L: | XL: | XXL: |
|------------------|----|----|----|-----|------|



BLACK

BREWED UNDERGROUND

165361337

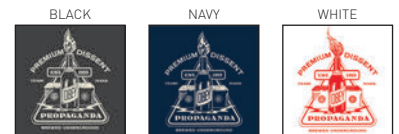
| | | | | | |
|------------------|----|----|----|-----|------|
| SHIPPED BY COLOR | S: | M: | L: | XL: | XXL: |
|------------------|----|----|----|-----|------|



BREWED UNDERGROUND

163081337

| | | | | | |
|------------------|----|----|----|-----|------|
| SHIPPED BY COLOR | S: | M: | L: | XL: | XXL: |
|------------------|----|----|----|-----|------|

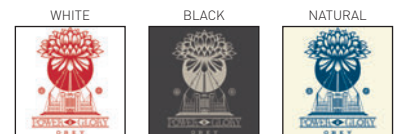


WHITE

OBEY GREEN POWER

165361321

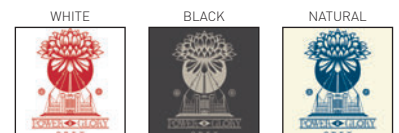
| | | | | | |
|------------------|----|----|----|-----|------|
| SHIPPED BY COLOR | S: | M: | L: | XL: | XXL: |
|------------------|----|----|----|-----|------|



OBEY GREEN POWER

163081321

| | | | | | |
|------------------|----|----|----|-----|------|
| SHIPPED BY COLOR | S: | M: | L: | XL: | XXL: |
|------------------|----|----|----|-----|------|



PREMIUM TEES / BASIC

PREMIUM: Regular fit short sleeve tee with a set in rib neck trim. Made in extra soft lightweight cotton. 100% Cotton; HEATHER GREY: 90% Cotton / 10% Polyester

BASIC: Regular fit crew neck tee with rib neck trim. Made in a heavyweight cotton. 100% Cotton; HEATHER GREY: 90% Cotton / 10% Polyester



MILITARY OLIVE

GIMME DANGER

165361338

| | | | | | |
|------------------|----|----|----|-----|------|
| SHIPPED BY COLOR | S: | M: | L: | XL: | XXL: |
|------------------|----|----|----|-----|------|



GIMME DANGER

163081338

| | | | | | |
|------------------|----|----|----|-----|------|
| SHIPPED BY COLOR | S: | M: | L: | XL: | XXL: |
|------------------|----|----|----|-----|------|



WHITE

TOUCH ME I'M SICK

165361342

| | | | | | |
|------------------|----|----|----|-----|------|
| SHIPPED BY COLOR | S: | M: | L: | XL: | XXL: |
|------------------|----|----|----|-----|------|



TOUCH ME I'M SICK

163081342

| | | | | | |
|------------------|----|----|----|-----|------|
| SHIPPED BY COLOR | S: | M: | L: | XL: | XXL: |
|------------------|----|----|----|-----|------|

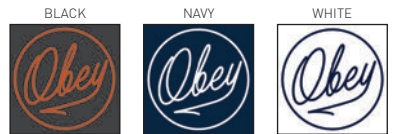


BLACK

BALLPOINT

165361287

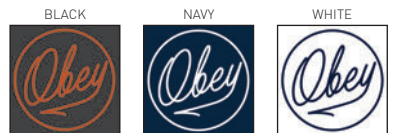
| | | | | | |
|------------------|----|----|----|-----|------|
| SHIPPED BY COLOR | S: | M: | L: | XL: | XXL: |
|------------------|----|----|----|-----|------|



BALLPOINT

163081287

| | | | | | |
|------------------|----|----|----|-----|------|
| SHIPPED BY COLOR | S: | M: | L: | XL: | XXL: |
|------------------|----|----|----|-----|------|



PREMIUM TEES / BASIC

PREMIUM: Regular fit short sleeve tee with a set in rib neck trim. Made in extra soft lightweight cotton. 100% Cotton; HEATHER GREY: 90% Cotton / 10% Polyester

BASIC: Regular fit crew neck tee with rib neck trim. Made in a heavyweight cotton. 100% Cotton; HEATHER GREY: 90% Cotton / 10% Polyester



BLACK

OBEY WORLDWIDE PROPAGANDA

165361301

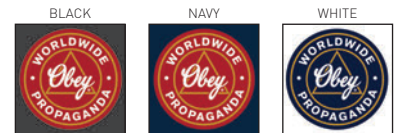
| | | | | | |
|------------------|----|----|----|-----|------|
| SHIPPED BY COLOR | S: | M: | L: | XL: | XXL: |
|------------------|----|----|----|-----|------|



OBEY WORLDWIDE PROPAGANDA

163081301

| | | | | | |
|------------------|----|----|----|-----|------|
| SHIPPED BY COLOR | S: | M: | L: | XL: | XXL: |
|------------------|----|----|----|-----|------|

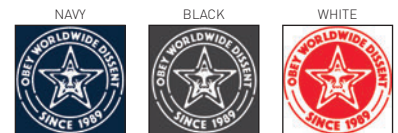


NAVY

PASTE STAR

165361302

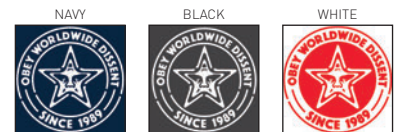
| | | | | | |
|------------------|----|----|----|-----|------|
| SHIPPED BY COLOR | S: | M: | L: | XL: | XXL: |
|------------------|----|----|----|-----|------|



PASTE STAR

163081302

| | | | | | |
|------------------|----|----|----|-----|------|
| SHIPPED BY COLOR | S: | M: | L: | XL: | XXL: |
|------------------|----|----|----|-----|------|

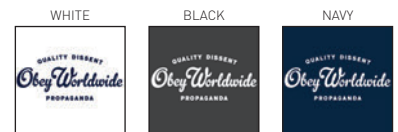


WHITE

QUALITY DISSENT PROPAGANDA

165361303

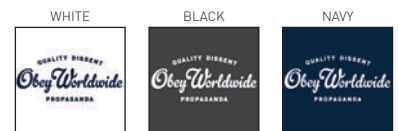
| | | | | | |
|------------------|----|----|----|-----|------|
| SHIPPED BY COLOR | S: | M: | L: | XL: | XXL: |
|------------------|----|----|----|-----|------|



QUALITY DISSENT PROPAGANDA

163081303

| | | | | | |
|------------------|----|----|----|-----|------|
| SHIPPED BY COLOR | S: | M: | L: | XL: | XXL: |
|------------------|----|----|----|-----|------|



PREMIUM TEES / BASIC

PREMIUM: Regular fit basic short sleeve tee with a set in rib neck trim. Made in extra soft lightweight cotton. 100% Cotton

BASIC: Regular fit crew neck tee with rib neck trim. Made in a heavyweight cotton. 100% Cotton; HEATHER GREY: 90% Cotton / 10% Polyester



BLACK

CHERRIES

165361220

| | | | | | |
|------------------|----|----|----|-----|------|
| SHIPPED BY COLOR | S: | M: | L: | XL: | XXL: |
|------------------|----|----|----|-----|------|



CHERRIES

163081220

| | | | | | |
|------------------|----|----|----|-----|------|
| SHIPPED BY COLOR | S: | M: | L: | XL: | XXL: |
|------------------|----|----|----|-----|------|



NAVY

OBEY LEGS

165361325

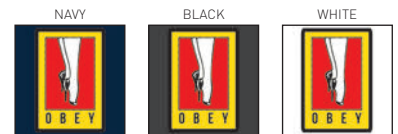
| | | | | | |
|------------------|----|----|----|-----|------|
| SHIPPED BY COLOR | S: | M: | L: | XL: | XXL: |
|------------------|----|----|----|-----|------|



OBEY LEGS

163081325

| | | | | | |
|------------------|----|----|----|-----|------|
| SHIPPED BY COLOR | S: | M: | L: | XL: | XXL: |
|------------------|----|----|----|-----|------|



PACIFIC BLUE

WALL CREEP

165361297

| | | | | | |
|------------------|----|----|----|-----|------|
| SHIPPED BY COLOR | S: | M: | L: | XL: | XXL: |
|------------------|----|----|----|-----|------|



WALL CREEP

163081297

| | | | | | |
|------------------|----|----|----|-----|------|
| SHIPPED BY COLOR | S: | M: | L: | XL: | XXL: |
|------------------|----|----|----|-----|------|



PREMIUM TEES / BASIC

PREMIUM: Regular fit basic short sleeve tee with a set in rib neck trim. Made in extra soft lightweight cotton. 100% Cotton

BASIC: Regular fit crew neck tee with rib neck trim. Made in a heavyweight cotton. 100% Cotton; HEATHER GREY: 90% Cotton / 10% Polyester



BLACK

CRASH N BURN 165361304

| | | | | | |
|------------------|----|----|----|-----|------|
| SHIPPED BY COLOR | S: | M: | L: | XL: | XXL: |
|------------------|----|----|----|-----|------|



CRASH N BURN 163081304

| | | | | | |
|------------------|----|----|----|-----|------|
| SHIPPED BY COLOR | S: | M: | L: | XL: | XXL: |
|------------------|----|----|----|-----|------|



NAVY

SMALL TALK 165361328

| | | | | | |
|------------------|----|----|----|-----|------|
| SHIPPED BY COLOR | S: | M: | L: | XL: | XXL: |
|------------------|----|----|----|-----|------|



SMALL TALK 163081328

| | | | | | |
|------------------|----|----|----|-----|------|
| SHIPPED BY COLOR | S: | M: | L: | XL: | XXL: |
|------------------|----|----|----|-----|------|



BLACK

OBEY LO-FI 165361319

| | | | | | |
|------------------|----|----|----|-----|------|
| SHIPPED BY COLOR | S: | M: | L: | XL: | XXL: |
|------------------|----|----|----|-----|------|



OBEY LO-FI 163081319

| | | | | | |
|------------------|----|----|----|-----|------|
| SHIPPED BY COLOR | S: | M: | L: | XL: | XXL: |
|------------------|----|----|----|-----|------|



PREMIUM TEES / BASIC

PREMIUM: Regular fit short sleeve tee with a set in rib neck trim. Made in extra soft lightweight cotton. 100% Cotton; HEATHER GREY: 90% Cotton / 10% Polyester

BASIC: Regular fit crew neck tee with rib neck trim. Made in a heavyweight cotton. 100% Cotton; HEATHER GREY: 90% Cotton / 10% Polyester



WHITE

SUBLIMINAL VISUAL

165361329

| | | | | | |
|------------------|----|----|----|-----|------|
| SHIPPED BY COLOR | S: | M: | L: | XL: | XXL: |
|------------------|----|----|----|-----|------|



SUBLIMINAL VISUAL

163081329

| | | | | | |
|------------------|----|----|----|-----|------|
| SHIPPED BY COLOR | S: | M: | L: | XL: | XXL: |
|------------------|----|----|----|-----|------|



NAVY

CHANNEL ZERO

165361290

| | | | | | |
|------------------|----|----|----|-----|------|
| SHIPPED BY COLOR | S: | M: | L: | XL: | XXL: |
|------------------|----|----|----|-----|------|



CHANNEL ZERO

163081290

| | | | | | |
|------------------|----|----|----|-----|------|
| SHIPPED BY COLOR | S: | M: | L: | XL: | XXL: |
|------------------|----|----|----|-----|------|



PACIFIC BLUE

DEVIL DEAL

165361289

| | | | | | |
|------------------|----|----|----|-----|------|
| SHIPPED BY COLOR | S: | M: | L: | XL: | XXL: |
|------------------|----|----|----|-----|------|



DEVIL DEAL

163081289

| | | | | | |
|------------------|----|----|----|-----|------|
| SHIPPED BY COLOR | S: | M: | L: | XL: | XXL: |
|------------------|----|----|----|-----|------|



PREMIUM TEES / BASIC

PREMIUM: Regular fit short sleeve tee with a set in rib neck trim. Made in extra soft lightweight cotton. 100% Cotton; HEATHER GREY: 90% Cotton / 10% Polyester

BASIC: Regular fit crew neck tee with rib neck trim. Made in a heavyweight cotton. 100% Cotton; HEATHER GREY: 90% Cotton / 10% Polyester

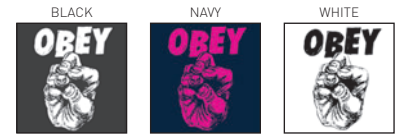


BLACK

HAND OF DOOM

165361300

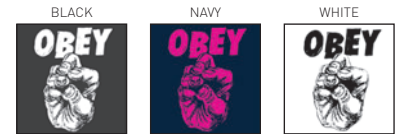
| | | | | | |
|------------------|----|----|----|-----|------|
| SHIPPED BY COLOR | S: | M: | L: | XL: | XXL: |
|------------------|----|----|----|-----|------|



HAND OF DOOM

163081300

| | | | | | |
|------------------|----|----|----|-----|------|
| SHIPPED BY COLOR | S: | M: | L: | XL: | XXL: |
|------------------|----|----|----|-----|------|

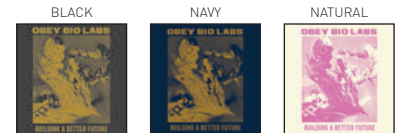


BLACK

OBEY BIO LABS

165361299

| | | | | | |
|------------------|----|----|----|-----|------|
| SHIPPED BY COLOR | S: | M: | L: | XL: | XXL: |
|------------------|----|----|----|-----|------|



OBEY BIO LABS

163081299

| | | | | | |
|------------------|----|----|----|-----|------|
| SHIPPED BY COLOR | S: | M: | L: | XL: | XXL: |
|------------------|----|----|----|-----|------|



PINK

ISOLATION

165361306

| | | | | | |
|------------------|----|----|----|-----|------|
| SHIPPED BY COLOR | S: | M: | L: | XL: | XXL: |
|------------------|----|----|----|-----|------|



ISOLATION

163081306

| | | | | | |
|------------------|----|----|----|-----|------|
| SHIPPED BY COLOR | S: | M: | L: | XL: | XXL: |
|------------------|----|----|----|-----|------|



PREMIUM TEES / BASIC

PREMIUM: Regular fit short sleeve tee with a set in rib neck trim. Made in extra soft lightweight cotton. 100% Cotton; HEATHER GREY: 90% Cotton / 10% Polyester

BASIC: Regular fit crew neck tee with rib neck trim. Made in a heavyweight cotton. 100% Cotton; HEATHER GREY: 90% Cotton / 10% Polyester



WHITE

JUMBLED UP PROPAGANDA 165361340

| | | | | | |
|------------------|----|----|----|-----|------|
| SHIPPED BY COLOR | S: | M: | L: | XL: | XXL: |
|------------------|----|----|----|-----|------|



JUMBLED UP PROPAGANDA 163081340

| | | | | | |
|------------------|----|----|----|-----|------|
| SHIPPED BY COLOR | S: | M: | L: | XL: | XXL: |
|------------------|----|----|----|-----|------|



BLACK

TOUGH TO TELL 165361229

| | | | | | |
|------------------|----|----|----|-----|------|
| SHIPPED BY COLOR | S: | M: | L: | XL: | XXL: |
|------------------|----|----|----|-----|------|



TOUGH TO TELL 163081229

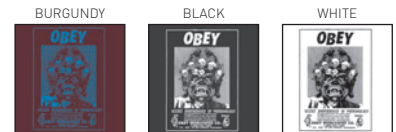
| | | | | | |
|------------------|----|----|----|-----|------|
| SHIPPED BY COLOR | S: | M: | L: | XL: | XXL: |
|------------------|----|----|----|-----|------|



BURGUNDY

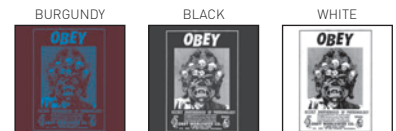
CULT PHENOM 165361288

| | | | | | |
|------------------|----|----|----|-----|------|
| SHIPPED BY COLOR | S: | M: | L: | XL: | XXL: |
|------------------|----|----|----|-----|------|



CULT PHENOM 163081288

| | | | | | |
|------------------|----|----|----|-----|------|
| SHIPPED BY COLOR | S: | M: | L: | XL: | XXL: |
|------------------|----|----|----|-----|------|



PREMIUM TEES / BASIC

PREMIUM: Regular fit short sleeve tee with a set in rib neck trim. Made in extra soft lightweight cotton. 100% Cotton; HEATHER GREY: 90% Cotton / 10% Polyester

BASIC: Regular fit crew neck tee with rib neck trim. Made in a heavyweight cotton. 100% Cotton; HEATHER GREY: 90% Cotton / 10% Polyester



BLACK

BOOKMARK 165361305

| | | | | | |
|------------------|----|----|----|-----|------|
| SHIPPED BY COLOR | S: | M: | L: | XL: | XXL: |
|------------------|----|----|----|-----|------|



BOOKMARK 163081305

| | | | | | |
|------------------|----|----|----|-----|------|
| SHIPPED BY COLOR | S: | M: | L: | XL: | XXL: |
|------------------|----|----|----|-----|------|



NATURAL

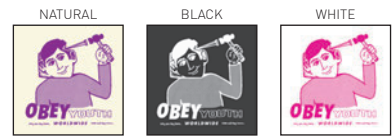
OBEY YOUTH 165361294

| | | | | | |
|------------------|----|----|----|-----|------|
| SHIPPED BY COLOR | S: | M: | L: | XL: | XXL: |
|------------------|----|----|----|-----|------|



OBEY YOUTH 163081294

| | | | | | |
|------------------|----|----|----|-----|------|
| SHIPPED BY COLOR | S: | M: | L: | XL: | XXL: |
|------------------|----|----|----|-----|------|



WHITE

TAKE CONTROL 165361341

| | | | | | |
|------------------|----|----|----|-----|------|
| SHIPPED BY COLOR | S: | M: | L: | XL: | XXL: |
|------------------|----|----|----|-----|------|



TAKE CONTROL 163081341

| | | | | | |
|------------------|----|----|----|-----|------|
| SHIPPED BY COLOR | S: | M: | L: | XL: | XXL: |
|------------------|----|----|----|-----|------|



PREMIUM TEES / BASIC

PREMIUM: Regular fit short sleeve tee with a set in rib neck trim. Made in extra soft lightweight cotton. 100% Cotton; HEATHER GREY: 90% Cotton / 10% Polyester

BASIC: Regular fit crew neck tee with rib neck trim. Made in a heavyweight cotton. 100% Cotton; HEATHER GREY: 90% Cotton / 10% Polyester



BLACK

COMEBACK

165361237

| | | | | | |
|------------------|----|----|----|-----|------|
| SHIPPED BY COLOR | S: | M: | L: | XL: | XXL: |
|------------------|----|----|----|-----|------|



COMEBACK

163081237

| | | | | | |
|------------------|----|----|----|-----|------|
| SHIPPED BY COLOR | S: | M: | L: | XL: | XXL: |
|------------------|----|----|----|-----|------|



WHITE

UNUSUAL ACTIVITY

165361324

| | | | | | |
|------------------|----|----|----|-----|------|
| SHIPPED BY COLOR | S: | M: | L: | XL: | XXL: |
|------------------|----|----|----|-----|------|



UNUSUAL ACTIVITY

163081324

| | | | | | |
|------------------|----|----|----|-----|------|
| SHIPPED BY COLOR | S: | M: | L: | XL: | XXL: |
|------------------|----|----|----|-----|------|



GOLD

ALL MUST OBEY

165361298

| | | | | | |
|------------------|----|----|----|-----|------|
| SHIPPED BY COLOR | S: | M: | L: | XL: | XXL: |
|------------------|----|----|----|-----|------|



ALL MUST OBEY

163081298

| | | | | | |
|------------------|----|----|----|-----|------|
| SHIPPED BY COLOR | S: | M: | L: | XL: | XXL: |
|------------------|----|----|----|-----|------|



PREMIUM POCKET TEE

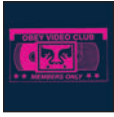
Regular fit basic short sleeve pocket tee with a set in rib neck trim and chest pocket. Made in an extra soft lightweight cotton. 100% Cotton; HEATHER GREY - 90% Cotton / 10% Polyester

OBEY VIDEO CLUB

165371225

| | | | | | |
|------------------|----|----|----|-----|------|
| SHIPPED BY COLOR | S: | M: | L: | XL: | XXL: |
|------------------|----|----|----|-----|------|

NAVY



WHITE



BLACK

MAGIC HAT

165371293

| | | | | | |
|------------------|----|----|----|-----|------|
| SHIPPED BY COLOR | S: | M: | L: | XL: | XXL: |
|------------------|----|----|----|-----|------|

HEATHER GREY



WHITE



BLACK

BLACK CAT

165371349

| | | | | | |
|------------------|----|----|----|-----|------|
| SHIPPED BY COLOR | S: | M: | L: | XL: | XXL: |
|------------------|----|----|----|-----|------|

BLACK



HEATHER GREY



WHITE

NEW TIMES 2

165371253

| | | | | | |
|------------------|----|----|----|-----|------|
| SHIPPED BY COLOR | S: | M: | L: | XL: | XXL: |
|------------------|----|----|----|-----|------|

BLACK



HEATHER GREY



WHITE

* metallic gold ink

PREMIUM RAGLAN

Regular fit raglan tee with rib neck binding. Features a color blocked ¾ sleeve length. Made in a lightweight cotton. 100% Cotton

OBEEY WORLDWIDE PROPAGANDA

165761301

| | | | | | |
|------------------|----|----|----|-----|------|
| SHIPPED BY COLOR | S: | M: | L: | XL: | XXL: |
|------------------|----|----|----|-----|------|

WHITE / NAVY



WHITE / RED



WHITE / BLACK

OBEEY SINCE 1989

165761308

| | | | | | |
|------------------|----|----|----|-----|------|
| SHIPPED BY COLOR | S: | M: | L: | XL: | XXL: |
|------------------|----|----|----|-----|------|

WHITE / NAVY



WHITE / CARAMEL



WHITE / BLACK

FRESH OFF THE PRESS

165761310

| | | | | | |
|------------------|----|----|----|-----|------|
| SHIPPED BY COLOR | S: | M: | L: | XL: | XXL: |
|------------------|----|----|----|-----|------|

HEATHER CHARCOAL / BLACK



WHITE / BLACK



WHITE / NAVY

OBEEY PROTO SCRIPT

165761322

| | | | | | |
|------------------|----|----|----|-----|------|
| SHIPPED BY COLOR | S: | M: | L: | XL: | XXL: |
|------------------|----|----|----|-----|------|

HEATHER CHARCOAL / NAVY



WHITE / BLACK



WHITE / BURGUNDY

BASIC LONGSLEEVE TEE

Regular fit crew neck long sleeve tee with rib trims. Made in an heavyweight cotton. 100% Cotton; HEATHER GREY - 90% Cotton / 10% Polyester

CHERRIES

164901220

| | | | | | |
|------------------|----|----|----|-----|------|
| SHIPPED BY COLOR | S: | M: | L: | XL: | XXL: |
|------------------|----|----|----|-----|------|

PINK



BLACK



WHITE

CRASH N BURN

164901304

| | | | | | |
|------------------|----|----|----|-----|------|
| SHIPPED BY COLOR | S: | M: | L: | XL: | XXL: |
|------------------|----|----|----|-----|------|

BLACK



WHITE



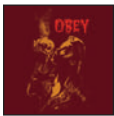
GOLD

GIMME DANGER

164901338

| | | | | | |
|------------------|----|----|----|-----|------|
| SHIPPED BY COLOR | S: | M: | L: | XL: | XXL: |
|------------------|----|----|----|-----|------|

BURGUNDY



WHITE



BLACK

MAGIC HAT

164901293

| | | | | | |
|------------------|----|----|----|-----|------|
| SHIPPED BY COLOR | S: | M: | L: | XL: | XXL: |
|------------------|----|----|----|-----|------|

PINK



WHITE



BLACK

UNUSUAL ACTIVITY

164901324

| | | | | | |
|------------------|----|----|----|-----|------|
| SHIPPED BY COLOR | S: | M: | L: | XL: | XXL: |
|------------------|----|----|----|-----|------|

BLACK



WHITE



BURGUNDY

ONE SHOT

164901333

| | | | | | |
|------------------|----|----|----|-----|------|
| SHIPPED BY COLOR | S: | M: | L: | XL: | XXL: |
|------------------|----|----|----|-----|------|

BLACK



PINK



WHITE

PREMIUM GRAPHIC TERRY FLEECE

Slim fit crew neck fleece with set in sleeves, rib details at neck, cuffs and waistband. Features a light weight french terry fabrication with an all over soft wash. 80% Cotton / 20% Polyester

PARK CREW

112480001

| | | | | | |
|------------------|----|----|----|-----|------|
| SHIPPED BY COLOR | S: | M: | L: | XL: | XXL: |
|------------------|----|----|----|-----|------|

BLACK



FADED BURGUNDY



SAND
* embroidery

NEW NEW TIMES HOOD

111610043

| | | | | | |
|------------------|----|----|----|-----|------|
| SHIPPED BY COLOR | S: | M: | L: | XL: | XXL: |
|------------------|----|----|----|-----|------|

BLACK



SAND



FADED BURGUNDY
* embroidery

MERIDIAN HOOD

112470001

| | | | | | |
|------------------|----|----|----|-----|------|
| SHIPPED BY COLOR | S: | M: | L: | XL: | XXL: |
|------------------|----|----|----|-----|------|

BLACK



RED



NAVY

PREMIUM GRAPHIC LOFTY FLEECE

Slim fit crew neck fleece with raglan sleeves, rib details at neck, cuffs and waistband. Features a extra soft fleece fabrication with an all over soft wash. 60% Cotton / 40% Polyester

NEXT ROUND HOOD 112431005

| | | | | | |
|------------------|----|----|----|-----|------|
| SHIPPED BY COLOR | S: | M: | L: | XL: | XXL: |
|------------------|----|----|----|-----|------|

BLACK MULTI



NAVY MULTI



BURGUNDY MULTI

FRESH OFF THE PRESS HOOD

112431310

| | | | | | |
|------------------|----|----|----|-----|------|
| SHIPPED BY COLOR | S: | M: | L: | XL: | XXL: |
|------------------|----|----|----|-----|------|

BLACK



DARK SLATE



IRON



ATHLETIC HEATHER GREY

ACADEMY CREW

112421332

| | | | | | |
|------------------|----|----|----|-----|------|
| SHIPPED BY COLOR | S: | M: | L: | XL: | XXL: |
|------------------|----|----|----|-----|------|

BLACK



NAVY



HEATHER GREY



BURGUNDY

BALLPOINT CREW

112421287

| | | | | | |
|------------------|----|----|----|-----|------|
| SHIPPED BY COLOR | S: | M: | L: | XL: | XXL: |
|------------------|----|----|----|-----|------|

BLACK



IRON



ATHLETIC HEATHER GREY



DARK SLATE

PREMIUM GRAPHIC PIGMENT FLEECE

Pigment dyed slim fit pullover hooded fleece with set in sleeves, pouch pocket and rib details at cuffs and waistband. Features a french terry fabrication with an all over soft wash.
100% Cotton

PROPAGANDA BARS HOODIE

111610066

| | | | | | |
|------------------|----|----|----|-----|------|
| SHIPPED BY COLOR | S: | M: | L: | XL: | XXL: |
|------------------|----|----|----|-----|------|

TYPE HOOD

111610056

| | | | | | |
|------------------|----|----|----|-----|------|
| SHIPPED BY COLOR | S: | M: | L: | XL: | XXL: |
|------------------|----|----|----|-----|------|

BLACK



IRON



LIGHT ARMY

IRON



LIGHT ARMY



BLACK
* embroidery

BASIC GRAPHIC CREWNECK FLEECE

Regular fit crewneck fleece with rib trims and set in sleeves. 80% Cotton / 20% Polyester

ISOLATION

111741306

| | | | | | |
|------------------|----|----|----|-----|------|
| SHIPPED BY COLOR | S: | M: | L: | XL: | XXL: |
|------------------|----|----|----|-----|------|

BLACK



DARK GREEN



WHITE

COMEBACK

111741237

| | | | | | |
|------------------|----|----|----|-----|------|
| SHIPPED BY COLOR | S: | M: | L: | XL: | XXL: |
|------------------|----|----|----|-----|------|

HEATHER GREY



WHITE



BLACK

UNUSUAL ACTIVITY

111741324

| | | | | | |
|------------------|----|----|----|-----|------|
| SHIPPED BY COLOR | S: | M: | L: | XL: | XXL: |
|------------------|----|----|----|-----|------|

BLACK



WHITE



CARDINAL

PYRAMID OF DISSENT

111741339

| | | | | | |
|------------------|----|----|----|-----|------|
| SHIPPED BY COLOR | S: | M: | L: | XL: | XXL: |
|------------------|----|----|----|-----|------|

BLACK



NAVY



HEATHER GREY

BASIC GRAPHIC PULLOVER HOOD FLEECE

Regular fit hooded fleece with pouch pocket, rib trim and set in sleeves. 80% Cotton / 20% Polyester

OBEY WORLDWIDE PROPAGANDA

111731301

| | | | | | |
|------------------|----|----|----|-----|------|
| SHIPPED BY COLOR | S: | M: | L: | XL: | XXL: |
|------------------|----|----|----|-----|------|

NAVY



HEATHER GREY



BLACK

OBEY PROPAGANDA COMPANY

111731201

| | | | | | |
|------------------|----|----|----|-----|------|
| SHIPPED BY COLOR | S: | M: | L: | XL: | XXL: |
|------------------|----|----|----|-----|------|

BLACK



NAVY



HEATHER GREY

THE CREEPER

111731247

| | | | | | |
|------------------|----|----|----|-----|------|
| SHIPPED BY COLOR | S: | M: | L: | XL: | XXL: |
|------------------|----|----|----|-----|------|

ARMY



HEATHER GREY



BLACK

BREWED UNDERGROUND

111731337

| | | | | | |
|------------------|----|----|----|-----|------|
| SHIPPED BY COLOR | S: | M: | L: | XL: | XXL: |
|------------------|----|----|----|-----|------|

BLACK



NAVY



NAVY

BASIC GRAPHIC PULLOVER ZIP FLEECE

Regular fit hooded with zip front, rib trim and set in sleeves. 80% Cotton / 20% Polyester

OBEY LEGS

111751325

| | | | | | |
|------------------|----|----|----|-----|------|
| SHIPPED BY COLOR | S: | M: | L: | XL: | XXL: |
|------------------|----|----|----|-----|------|

NAVY



HEATHER GREY



BLACK

NEXT ROUND 2

111751005

| | | | | | |
|------------------|----|----|----|-----|------|
| SHIPPED BY COLOR | S: | M: | L: | XL: | XXL: |
|------------------|----|----|----|-----|------|

BLACK



NAVY



CARDINAL

CLASSIC COACHES JACKET

Regular fit nylon jacket with raglan sleeves. Features an all over tricot lining and snap closure at center front. Shell: 100% Nylon; Lining: 100% Polyester

UNUSUAL ACTIVITY 125001324

| | | | | | |
|------------------|----|----|----|-----|------|
| SHIPPED BY COLOR | S: | M: | L: | XL: | XXL: |
|------------------|----|----|----|-----|------|

PINK



ORANGE



BLACK

SMALL TALK 125001328

| | | | | | |
|------------------|----|----|----|-----|------|
| SHIPPED BY COLOR | S: | M: | L: | XL: | XXL: |
|------------------|----|----|----|-----|------|

BLACK



NAVY



WHITE

OBEY YOUTH 125001294

| | | | | | |
|------------------|----|----|----|-----|------|
| SHIPPED BY COLOR | S: | M: | L: | XL: | XXL: |
|------------------|----|----|----|-----|------|

BLACK



NAVY



WHITE

BREWED UNDERGROUND 125001337

| | | | | | |
|------------------|----|----|----|-----|------|
| SHIPPED BY COLOR | S: | M: | L: | XL: | XXL: |
|------------------|----|----|----|-----|------|

MAROON



NAVY



BLACK

HOODED SNAP COACHES JACKET

Regular fit hooded nylon coaches jacket with cap sleeves. Features all over tricot lining and snap closure at center front. Shell: 100% Nylon; Lining: 100% Polyester

OBEY PROPAGANDA COMPANY

126251201

| | | | | | |
|------------------|----|----|----|-----|------|
| SHIPPED BY COLOR | S: | M: | L: | XL: | XXL: |
|------------------|----|----|----|-----|------|

CAMO



BLACK

TAKE CONTROL

126251341

| | | | | | |
|------------------|----|----|----|-----|------|
| SHIPPED BY COLOR | S: | M: | L: | XL: | XXL: |
|------------------|----|----|----|-----|------|

CAMO



BLACK

HOODED ZIP COACHES JACKET

Regular fit hooded nylon coaches jacket with raglan sleeves. Features all over tricot lining with zipper closure at center front and rib cuff. Shell: 100% Nylon; Lining: 100% Polyester

CHANNEL ZERO

126241290

| | | | | | |
|------------------|----|----|----|-----|------|
| SHIPPED BY COLOR | S: | M: | L: | XL: | XXL: |
|------------------|----|----|----|-----|------|

BLACK



BURGUNDY



CAMO

NEXT ROUND 2

1262451005

| | | | | | |
|------------------|----|----|----|-----|------|
| SHIPPED BY COLOR | S: | M: | L: | XL: | XXL: |
|------------------|----|----|----|-----|------|

CAMO



CARDINAL



BLACK

VINTAGE



SUPERIOR TEE
OBEY WORLDWIDE QUALITY DISSENT
166141309

SUPERIOR TEE

Regular fit crew neck tee with solid rib trims. Features a super soft fine knit jersey fabrication. 100% Cotton

THE PEOPLE'S DISCONTENT

166141307

| | | | | | |
|------------------|----|----|----|-----|------|
| SHIPPED BY COLOR | S: | M: | L: | XL: | XXL: |
|------------------|----|----|----|-----|------|

BLACK



WHITE



PINK

OBEY SINCE 1989

166141308

| | | | | | |
|------------------|----|----|----|-----|------|
| SHIPPED BY COLOR | S: | M: | L: | XL: | XXL: |
|------------------|----|----|----|-----|------|

LIGHT ARMY



WHITE



BLACK

OBEY WORLDWIDE QUALITY DISSENT

166141309

| | | | | | |
|------------------|----|----|----|-----|------|
| SHIPPED BY COLOR | S: | M: | L: | XL: | XXL: |
|------------------|----|----|----|-----|------|

BURGUNDY



WHITE



NAVY

FRESH OFF THE PRESS

166141310

| | | | | | |
|------------------|----|----|----|-----|------|
| SHIPPED BY COLOR | S: | M: | L: | XL: | XXL: |
|------------------|----|----|----|-----|------|

BLACK



NAVY



WHITE

APOCALYPSE SCRIPT

166141311

| | | | | | |
|------------------|----|----|----|-----|------|
| SHIPPED BY COLOR | S: | M: | L: | XL: | XXL: |
|------------------|----|----|----|-----|------|

LIGHT ARMY



DARK BURGUNDY



BLACK

PYRAMID OF DISSENT

166141339

| | | | | | |
|------------------|----|----|----|-----|------|
| SHIPPED BY COLOR | S: | M: | L: | XL: | XXL: |
|------------------|----|----|----|-----|------|

BLACK



LIGHT ARMY



WHITE

SUPERIOR TEE

Regular fit crew neck tee with solid rib trims. Features a super soft fine knit jersey fabrication. 100% Cotton

TYPEWRITTER

166141317

| | | | | | |
|------------------|----|----|----|-----|------|
| SHIPPED BY COLOR | S: | M: | L: | XL: | XXL: |
|------------------|----|----|----|-----|------|

BLACK



DARK BROWN



WHITE
* metallic gold ink

WAR PIGS

166141198

| | | | | | |
|------------------|----|----|----|-----|------|
| SHIPPED BY COLOR | S: | M: | L: | XL: | XXL: |
|------------------|----|----|----|-----|------|

BLACK



LIGHT ARMY



WHITE

BOTTOMS UP

166141318

| | | | | | |
|------------------|----|----|----|-----|------|
| SHIPPED BY COLOR | S: | M: | L: | XL: | XXL: |
|------------------|----|----|----|-----|------|

LIGHT ARMY



WHITE



PINK

DREAMING

166141329

| | | | | | |
|------------------|----|----|----|-----|------|
| SHIPPED BY COLOR | S: | M: | L: | XL: | XXL: |
|------------------|----|----|----|-----|------|

LIGHT ARMY



PINK



WHITE

FREE LOVE

166141331

| | | | | | |
|------------------|----|----|----|-----|------|
| SHIPPED BY COLOR | S: | M: | L: | XL: | XXL: |
|------------------|----|----|----|-----|------|

LIGHT ARMY



WHITE



BLACK

OBEY LO-FI

166141319

| | | | | | |
|------------------|----|----|----|-----|------|
| SHIPPED BY COLOR | S: | M: | L: | XL: | XXL: |
|------------------|----|----|----|-----|------|

LIGHT ARMY



WHITE



BLACK

SUPERIOR PIGMENT TEE

Regular fit pigment dyed crew neck tee with solid rib trims. Features a super soft fine knit jersey fabrication. 100% Cotton

O.B.E.Y. 2

166521330

| | | | | | |
|------------------|----|----|----|-----|------|
| SHIPPED BY COLOR | S: | M: | L: | XL: | XXL: |
|------------------|----|----|----|-----|------|

BLACK



CLAY



WHITE
* crack ink

ONE SHOT

166521333

| | | | | | |
|------------------|----|----|----|-----|------|
| SHIPPED BY COLOR | S: | M: | L: | XL: | XXL: |
|------------------|----|----|----|-----|------|

BLACK



CLAY



WHITE
* crack ink

OBEY MIND CONTROL

166521334

| | | | | | |
|------------------|----|----|----|-----|------|
| SHIPPED BY COLOR | S: | M: | L: | XL: | XXL: |
|------------------|----|----|----|-----|------|

DARK BURGUNDY



FOG



BLACK
* crack ink

IN CHAINS

166521336

| | | | | | |
|------------------|----|----|----|-----|------|
| SHIPPED BY COLOR | S: | M: | L: | XL: | XXL: |
|------------------|----|----|----|-----|------|

IRON



FOG



BLACK
* crack ink

INTO THE VOID

166521335

| | | | | | |
|------------------|----|----|----|-----|------|
| SHIPPED BY COLOR | S: | M: | L: | XL: | XXL: |
|------------------|----|----|----|-----|------|

LIGHT ARMY



FOG



BLACK
* crack ink

GIMME DANGER

166521338

| | | | | | |
|------------------|----|----|----|-----|------|
| SHIPPED BY COLOR | S: | M: | L: | XL: | XXL: |
|------------------|----|----|----|-----|------|

DARK BURGUNDY



FOG



BLACK
* crack ink

SUPERIOR LONGSLEEVE PIGMENT TEE

Regular fit long sleeve pigment dyed crew neck tee with solid rib trims. Features a super soft fine knit jersey fabrication. 100% Cotton

TYPEWRITTER

166451317

| | | | | | |
|------------------|----|----|----|-----|------|
| SHIPPED BY COLOR | S: | M: | L: | XL: | XXL: |
|------------------|----|----|----|-----|------|

DARK BROWN



WHITE



BLACK
* metallic ink

O.B.E.Y. 2

166451330

| | | | | | |
|------------------|----|----|----|-----|------|
| SHIPPED BY COLOR | S: | M: | L: | XL: | XXL: |
|------------------|----|----|----|-----|------|

LIGHT ARMY



IRON



BLACK
* crack ink

OBEY MIND CONTROL

166451334

| | | | | | |
|------------------|----|----|----|-----|------|
| SHIPPED BY COLOR | S: | M: | L: | XL: | XXL: |
|------------------|----|----|----|-----|------|

DARK BURGUNDY



FOG



BLACK
* crack ink

BOTTOMS UP

166451318

| | | | | | |
|------------------|----|----|----|-----|------|
| SHIPPED BY COLOR | S: | M: | L: | XL: | XXL: |
|------------------|----|----|----|-----|------|

PINK



FOG



WHITE



CUSTOM



SLUB TEE
UNIVERSAL PERSONHOOD 2
164191284

HEATHER TRI-BLEND TEE

Regular fit short sleeve with rib neck trim. Features a lightweight tri-blend fabrication with a heathered effect. 50% Polyester / 25% Cotton / 25% Rayon

OBEY PROTO SCRIPT

164191322

| | | | | | |
|------------------|----|----|----|-----|------|
| SHIPPED BY COLOR | S: | M: | L: | XL: | XXL: |
|------------------|----|----|----|-----|------|

HEATHER GREY



HEATHER ASH



MOOD INDIGO

SMASH PASSIVISM

164191295

| | | | | | |
|------------------|----|----|----|-----|------|
| SHIPPED BY COLOR | S: | M: | L: | XL: | XXL: |
|------------------|----|----|----|-----|------|

HEATHER GREY



HEATHER ASH



GRAPHITE

DECODING DISINFORMATION SINCE 1989

164191282

| | | | | | |
|------------------|----|----|----|-----|------|
| SHIPPED BY COLOR | S: | M: | L: | XL: | XXL: |
|------------------|----|----|----|-----|------|

GRAPHITE



HEATHER GREY



MOOD INDIGO

UNIVERSAL PERSONHOOD 2

164191284

| | | | | | |
|------------------|----|----|----|-----|------|
| SHIPPED BY COLOR | S: | M: | L: | XL: | XXL: |
|------------------|----|----|----|-----|------|

MOOD INDIGO



HEATHER GREY



GRAPHITE

SLUB TEE

Regular fit short sleeve tee with set in rib neck trim. Features a midweight slub jersey fabrication. 100% Cotton

EDGE OF DESTRUCTION

164021285

| | | | | | |
|------------------|----|----|----|-----|------|
| SHIPPED BY COLOR | S: | M: | L: | XL: | XXL: |
|------------------|----|----|----|-----|------|

BLACK



WHITE



ARMY

FALLEN ANGELS

164021286

| | | | | | |
|------------------|----|----|----|-----|------|
| SHIPPED BY COLOR | S: | M: | L: | XL: | XXL: |
|------------------|----|----|----|-----|------|

ARMY



WHITE



BLACK

OIL EAGLE

164021296

| | | | | | |
|------------------|----|----|----|-----|------|
| SHIPPED BY COLOR | S: | M: | L: | XL: | XXL: |
|------------------|----|----|----|-----|------|

BLACK



WHITE



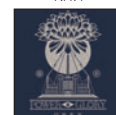
NAVY

OBEY GREEN POWER

164021321

| | | | | | |
|------------------|----|----|----|-----|------|
| SHIPPED BY COLOR | S: | M: | L: | XL: | XXL: |
|------------------|----|----|----|-----|------|

NAVY



WHITE



ARMY

FIT GUIDE



BASIC TEE

Regular fit crew neck tee with rib neck trim, made in a heavyweight cotton. 100% Cotton; HEATHER GREY - 90% Cotton / 10% Polyester



PREMIUM TEE

Regular fit short sleeve tee with a set in rib neck trim. Made in an extra soft lightweight cotton. 100% Cotton; HEATHER GREY - 90% Cotton / 10% Polyester



PREMIUM POCKET TEE

Regular fit short sleeve pocket tee with a set in rib neck trim and chest pocket. Made in an extra soft lightweight cotton. 100% Cotton; HEATHER GREY - 90% Cotton / 10% Polyester

FIT GUIDE



HEATHER TRIBLEND TEE

Regular fit short sleeve with rib neck trim. Features a lightweight tri-blend fabrication with a heathered effect. 50% Polyester / 25% Cotton / 25% Rayon



SUPERIOR TEE

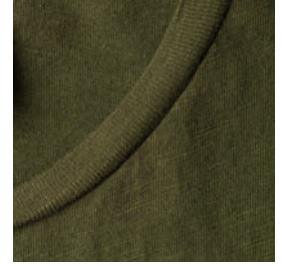
Regular fit crew neck tee with solid rib trims. Features a super soft fine knit jersey fabrication. 100% Cotton



SUPERIOR PIGMENT TEE

Regular fit short sleeve tee with rib neck trim. Features a pigment dyed lightweight fabrication for a dusty look and a smooth hand. 100% Cotton

FIT GUIDE



SLUB TEE

Regular fit short sleeve tee with set in rib neck trim. Features a midweight slub jersey fabrication. 100% Cotton



PREMIUM RAGLAN

Regular fit raglan tee with rib neck binding. Features a color blocked $\frac{3}{4}$ sleeve length, made in a lightweight cotton. 100% Cotton



BASIC LONGSLEEVE TEE

Regular fit crew neck long sleeve tee with rib trims. Made in a heavyweight cotton. 100% Cotton

FIT GUIDE



SUPERIOR LONG SLEEVE PIGMENT TEE

Regular fit long sleeve pigment dyed crew neck tee with solid rib trims. Features a super soft fine knit jersey fabrication. 100% Cotton



BASIC GRAPHIC CREWNECK

Regular fit crewneck fleece with rib trims and set in sleeves. 80% Cotton / 20% Polyester



PREMIUM GRAPHIC TERRY CREWNECK

Slim fit crew neck fleece with set in sleeves, rib details at neck, cuffs and waistband. Features a light weight french terry fabrication with an all over soft wash. 80% Cotton / 20% Polyester

FIT GUIDE



PREMIUM GRAPHIC LOFTY CREWNECK

Slim fit crew neck fleece with raglan sleeves, rib details at neck, cuffs and waistband. Features a extra soft fleece fabrication with an all over soft wash. 60% Cotton / 40% Polyester



BASIC GRAPHIC PULLOVER HOOD

Regular fit hooded fleece with pouch pocket, rib trim and set in sleeves. 80% Cotton / 20% Polyester



PREMIUM GRAPHIC TERRY HOOD

Slim fit pullover hooded fleece with set in sleeves, pouch pocket and rib details at cuffs and waistband. Features a light weight french terry fabrication with an all over soft wash. 80% Cotton / 20% Polyester

FIT GUIDE



PREMIUM GRAPHIC LOFTY HOOD

Slim fit pullover hooded fleece with raglan sleeves, pouch pocket and rib details at cuffs and waistband. Features an extra soft fleece fabrication with an all over soft wash. 60% Cotton / 40% Polyester



PREMIUM GRAPHIC PIGMENT PULLOVER HOOD

Pigment dyed slim fit pullover hooded fleece with set in sleeves, pouch pocket and rib details at cuffs and waistband. Features a french terry fabrication with an all over soft wash. 100% Cotton



BASIC GRAPHIC PULLOVER ZIP HOOD

Regular fit hooded with zip front, rib trim and set in sleeves. 80% Cotton / 20% Polyester

FIT GUIDE



CLASSIC COACHES JACKET
Regular fit nylon jacket with raglan sleeves. Features an all over tricot lining and snap closure at center front. Shell: 100% Nylon; Lining: 100% Polyester



HOODED COACHES JACKET
Regular fit hooded nylon coaches jacket with cap sleeves. Features all over tricot lining and snap closure at center front. Shell: 100% Nylon; Lining: 100% Polyester



HOODED ZIP COACHES JACKET
Regular fit hooded nylon coaches jacket with raglan sleeves. Features all over tricot lining with zipper closure at center front and rib cuff. Shell: 100% Nylon; Lining: 100% Polyester