



**DARK SEAS**  
DIVISION

FALL 2016



## TABLE OF CONTENTS

JACKETS	02	LADIES JACKETS / WOVENS	48
WOVENS	06	LADIES WOVENS	49
KNITS	09	LADIES KNITS	50
CUSTOM CREW FLEECE	12	LADIES CUSTOM FLEECE	51
CUSTOM PULLOVER FLEECE	13	LADIES MONDAY MORNING PULLOVER / WEEKEND CREW FLEECE	52
BOTTOMS	14	LADIES STOW AWAY LS TEES	53
FITTED HOODED LONG SLEEVE TEES	16	LADIES DONNA RAGLANS	54
SHORT SLEEVE RAGLANS	17	LADIES DONNA RAGLANS / LOLA SHORT SLEEVE RAGLANS	55
UNION TEES	18	LADIES DEAD WAKE RINGERS	56
OLD TIME POCKET TEES	20	LADIES LOOSE CANON V NECKS	57
OLD TIME TEES	21	LADIES CASTAWAY POCKET TEES	58
FITTED V-NECK / FITTED TEES	23	LADIES ALL DAY TEES	59
FITTED TEES	24	LADIES BASEMENT CUT OFF TANKS	60
STOCK POCKET TEES	29	LADIES UNION TRACK TANKS / TAPED ANCHOR BACK TANKS	61
HEADWEAR	31	LADIES HEADWEAR	62
ACCESSORIES	40	LADIES P.O.P.	62
P.O.P.	45		



313000054

**BOONDOCKS**

- Cotton/nylon trench coat
- 600mm water resistant coating
- Taffeta lining
- Zip front with storm flap
- Welt pockets with flap at waist
- Welt chest pocket
- Chest embroidery
- DS anchor buttons
- Anchor pin on collar
- Dark Seas woven label branding
- Shell: 55% cotton / 45% nylon
- Lining: 100% poly



S M L XL XXL  
A. BLACK



313000053

**SKYSAIL**

- Cotton/poly ottoman hooded hikers jacket
- 600mm water resistant coating
- Zip front with storm flap
- Patch pocket with flaps at chest and waist
- Contrast taffeta lining
- Waist cinch
- Tortoise buttons
- Dark Seas woven label branding
- Shell: 60% cotton / 40% nylon
- Lining: 100% poly



S M L XL XXL  
A. DK. NAVY



313000052

**TRANSMIT**

- Bedford cord gas station jacket
- 600mm water resistant coating
- Zip front
- Contrast taffeta lining
- Zip pockets at waist and chest
- Chain stitch embroidery on chest
- Anchor pin on collar
- Dark Seas woven label branding
- Shell: 99% cotton / 1% spandex
- Lining: 100% poly



S M L XL XXL  
A. RUM RAISIN



313000051

**STEAMER**

- Cotton/poly twill coaches jacket
- Taffeta lining
- Enamel coated snap front
- Double welt pockets at waist
- Anchor embroidery on chest
- Logo button and lapel pin on chest
- Drawcord waist
- Dark Seas woven label branding
- Shell: 60% cotton / 40% poly
- Lining: 100% poly



S M L XL XXL  
A. BLACK



**PETTY OFFICER**

- Wool blend CPO shirt jacket
- Taffeta lining
- Patch pockets on chest
- Welt pockets at waist
- DS anchor buttons
- Leather label on chest pocket flap
- Dark Seas woven label branding
- Anchor pin on collar
- Shell: 50% wool / 50% poly
- Lining: 100% poly

313000050



S M L XL XXL

A. DK. NAVY



**PROW**

- Flannel shirt jacket with insulation
- Taffeta lining
- Chest pockets with flaps
- Welt pockets at waist
- DS anchor snaps
- Dark Seas woven label branding
- Anchor pin on collar
- Shell: 100% cotton
- Lining: 100% poly

313000049



S M L XL XXL

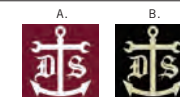
A. RUM RAISIN



**PASTIME**

- Coach's jacket with hood
- Drawstring hood and waist
- 100% nylon shell

313000057



S M L XL XXL

A. CARDINAL

B. BLACK



**DANGEROUS GOODS**

- Coach's jacket
- Drawstring waist
- 100% nylon shell
- C/O

313000055



S M L XL XXL

A. NAVY

B. BLACK



**BAILER**

**311600028**

- LS printed plaid flannel shirt
- Poplin collarstand with hand embroidery
- Chest pockets with flaps
- Contrast cat eye buttons
- Anchor pin on collar
- Dark Seas woven label branding
- 100% cotton



S M L XL XXL  
A. DEEP ATLANTIC



**CENTREBOARD**

**311600029**

- LS grindle plaid flannel shirt
- Taffeta collarstand, int. back yoke, and cuff facing
- Chest pockets with flaps
- Tortoise buttons
- Anchor pin on collar
- Dark Seas woven label branding
- 100% cotton



S M L XL XXL  
A. NAVY / GREY



**OX-EYE**

**311600032**

- LS printed rope stripe flannel shirt
- Taffeta collarstand with hand embroidery
- Chest pocket with flap
- Tortoise buttons
- Anchor pin on collar
- Dark Seas woven label branding
- 100% cotton



S M L XL XXL  
A. RUM RAISIN



**HULL LONG SLEEVE  
HULL SHORT SLEEVE**

**311600030  
311500024**

- Double cloth SS or LS shirt
- Poplin collarstand with hand embroidery
- Diamond engraved buttons
- Anchor pin on collar
- Dark Seas woven label branding
- 90% cotton / 10% poly



S M L XL XXL  
A. BLACK



**SPLICE LONG SLEEVE**  
**SPLICE SHORT SLEEVE**

- Striped SS or LS gas station shirt
- Ring snap front closure
- Chest pockets with ring snap
- Chainstitch embroidery on chest
- Anchor pin on collar
- Dark Seas woven label branding
- 100% cotton

**311600031**  
**311500025**



S M L XL XXL  
A. DK. NAVY



**MANTA**

- Printed poplin short sleeve shirt
- Hand embroidery on collarstand
- Anchor pin on collar
- Dark Seas woven label branding
- 100% cotton

**311500023**



S M L XL XXL  
A. DK. NAVY



**LATEEN**

- Long sleeve vertical striped henley
- Contrast heather neck rib and placket
- Engineered stripe rib cuff
- Pick stitch bottom hem
- DS anchor embroidery on chest
- Diamond engraved buttons on placket
- Dark Seas woven label branding
- 100% cotton

**311100014**



S M L XL XXL  
A. BLACK



**TINCLAD**

- Raglan sleeve
- Rib cuff and neck band
- Batik logo print on chest
- Dark Seas woven label branding
- 55% cotton / 45% poly

**311100015**



S M L XL XXL  
A. BLACK

**UNDERWAY**

- Short sleeve slub jersey pocket crew
- Contrast nautical stripe back panel
- 2-tone neck band with hand embroidery
- Dark Seas woven label branding
- 100% cotton

311000023

A.



S M L XL XXL

A. BLACK

010

**TURRET**

- Short sleeve printed jersey pocket crew
- Contrast rib neck binding
- Pick stitch pocket hem
- Dark Seas woven label branding
- 100% cotton

311000024

A.



S M L XL XXL

A. DEEP ATLANTIC

**WAPT**

- Short sleeve striped crew
- Felt applique on chest
- Contrast rib neck band
- Dark Seas woven label branding
- 100% cotton

311000025

A.



S M L XL XXL

A. NAVY / RED

011

**WHERRY**

- Short sleeve nep heather crew neck
- Double layer contrast neck binding
- Applique stripe on shoulder
- Dark Seas woven label branding
- 100% cotton
- C/O

311000021

A.



S M L XL XXL

A. GREY HEATHER



312000013

**SHEEPLAN**

- Printed french terry crew neck fleece
- Contrast chunky rib neck binding, waistband, and cuff
- Chainstitch embroidery on chest
- Welt pockets with rib detail
- Rib triangle insert at neck
- Dark Seas woven label branding
- 80% cotton / 20% poly



S M L XL XXL

A. DEEP ATLANTIC



312000014

**ICEBREAKER**

- French terry crew fleece with chest pocket
- Chainstitch logo on chest pocket
- Chunky rib neck binding, waistband, and cuff
- Rib triangle insert at neck
- Side seam pockets with contrast stripe pocket bags
- Dark Seas woven label branding
- 80% cotton / 20% poly



S M L XL XXL

A. DK. NAVY



312000016

**GUNNER**

- Pull over hooded fleece
- Chainstitch patch on chest with merrow edge
- Chainstitch and print embellishment on back
- Dark Seas woven label branding
- 80% cotton / 20% poly



S M L XL XXL

A. BLACK



301900001

**GOLD LABEL**

- Contrast raglan sleeves
- Jersey lined hood
- 55% cotton / 45% poly



S M L XL XXL

A. CHARCOAL / BLACK





**BUCKO**

- Cotton/nylon boardshort
- 17 1/2" outseam
- Jacquard tape detail on waistband
- Quarter stripe drawcord
- Dark Seas woven label branding
- 70% cotton / 30% nylon
- C/O

315200024



	28	30	32	34	36	38
A. BLACK						



**BUNTLINE**

- Regular fit flight satin boardshort
- 18 1/2" outseam
- Striped cotton drawcord
- Velcro fly
- Dark Seas woven label branding
- 100% nylon
- C/O

315200001



	28	30	32	34	36	38
A. BLACK						
B. NAVY						
C. OLIVE						



**TRANSPORT**

- Sublimation printed boardshort
- 17 1/2" outseam
- Quarter stripe drawcord
- Dark Seas woven label branding
- 55% nylon / 43% cotton / 2% spandex
- C/O

315200022



	28	30	32	34	36	38
A. BLACK						



**DEPOT**

- Elastic waist twill casual pant
- Sits at natural waist
- Slightly tapered leg
- 15" leg opening
- Slash front pockets
- Welt back pockets
- Quarter stripe drawcord
- Dark Seas woven label branding
- 100% cotton
- C/O

314000005



	S	M	L	XL
A. BLACK				



**AVANT-GARDE**

- Premium fit hooded long sleeve
- 100% cotton

**309300005**



S M L XL XXL

- A. DEEP ATLANTIC
- B. BLACK

**IMMORTAL**

- 100% cotton

**309400002**



S M L XL XXL

- A. BLACK
- B. WHITE



**ENTWINE**

- 50% cotton / 50% poly

**307400006**



S M L XL XXL

- A. WHITE / NAVY
- B. WHITE / BLACK

**PASTIME**

- 50% cotton / 50% poly

**307400005**



S M L XL XXL

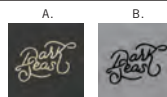
- A. HEATHER GREY / BLACK
- B. HEATHER GREY / MAROON



**MESMERIZE**

**302100049**

• 50% poly / 25% cotton / 25% rayon



S M L XL XXL

A. HEATHER GRAPHITE

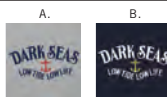
B. HEATHER GREY



**MASTERY**

**302100047**

• 50% poly / 25% cotton / 25% rayon



S M L XL XXL

A. HEATHER GREY

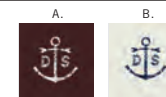
B. HEATHER DARK NAVY



**CASTOFF**

**302100048**

• 50% poly / 25% cotton / 25% rayon



S M L XL XXL

A. HEATHER BURGUNDY

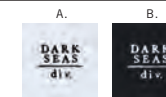
B. HEATHER NATURAL WHITE



**JOIN OR DIE**

**302100050**

• 50% poly / 25% cotton / 25% rayon



S M L XL XXL

A. HEATHER NATURAL WHITE

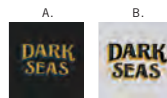
B. HEATHER ONYX



**TUKI**

- Pocket tee
- 100% cotton

**304900014**



	S	M	L	XL	XXL
A. BLACK					
B. LT. GREY					



**DEEP POCKET**

- Pocket tee
- 100% cotton

**304900015**



	S	M	L	XL	XXL
A. LT. GREY					
B. GRAPHITE					



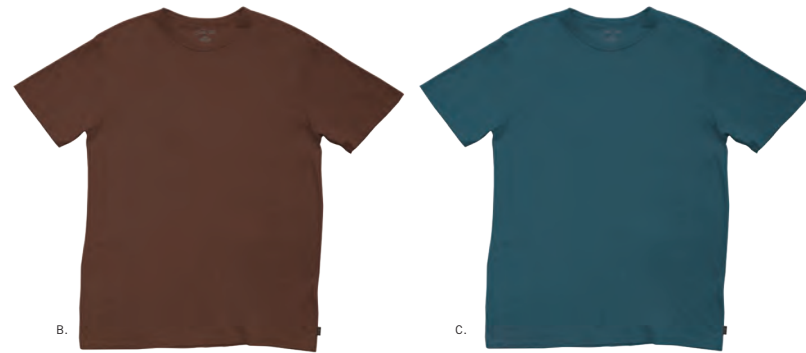
A.

**WORKMAN**

- Screened neck label
- Side seam flag label
- 100% cotton

**304300129**

	S	M	L	XL	XXL
A. LT. GREY					
B. RUM RAISIN					
C. DEEP ATLANTIC					
D. BLACK COFFEE					



B.

C.



D.



**PLUNGE**

• 100% cotton

304300131

A.



EA

A. BLACK



**COLD CALL**

• 100% cotton

304300130

A.



EA

A. BLACK



**RECRUIT**

• 100% cotton

308000001

A.

B.



S M L XL XXL

A. WHITE

B. BLACK



**DEAD POET**

• 100% cotton

304400049

A.

B.



S M L XL XXL

A. BLACK

B. WHITE

FITTED TEES



**GOLD LABEL**

• 100% cotton

**304400047**



S M L XL XXL

A. BLACK  
B. WHITE

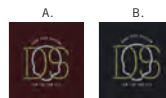
024



**COTTON CORD**

• 100% cotton

**304400046**



S M L XL XXL

A. BURGUNDY  
B. BLACK



**FLAT FISH**

• 100% cotton

**304400055**



S M L XL XXL

A. NAVY  
B. WHITE

025



**IMPERIAL**

• 100% cotton

**304400048**



S M L XL XXL

A. BLACK

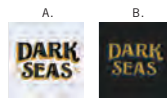
FITTED TEES



**TUKI**

• 100% cotton

**304400051**



S M L XL XXL

A. WHITE  
B. BLACK



**MAGIC STICK**

• 100% cotton

**304400054**



S M L XL XXL

A. BLACK  
B. BURGUNDY



**DRINKING DEN**

• 100% cotton

**304400052**



S M L XL XXL

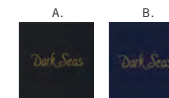
A. WHITE  
B. HEATHER GREY



**TALL TALE**

• 100% cotton

**304400053**



S M L XL XXL

A. BLACK  
B. NAVY



**SCUBA**

- 100% cotton

304400050



EA

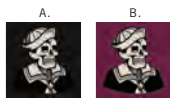
- A. NAVY
- B. BLACK



**MIDSHIPMAN**

- 100% cotton
- C/O

304400036



EA

- A. BLACK
- B. BURGUNDY



**BAIT & TACKLE**

- Pocket Tee
- 100% cotton

306000003



S M L XL XXL

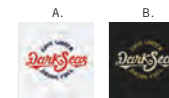
- A. BLACK
- B. WHITE



**DRINK FUEL**

- Pocket tee
- 100% cotton

306000004



S M L XL XXL

- A. WHITE
- B. BLACK





HEADWEAR

**F.O.A.D.**

- Twill trucker hat
- Satin stitch embroidery on front
- Dark Seas woven label branding

**321000174**

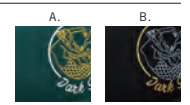


	EA
A. BLACK	
B. RED	

**PERISCOPE**

- Twill trucker hat
- Print & chainstitch on front
- Dark Seas woven label branding

**321000175**



	EA
A. GREEN	
B. BLACK	

**CORPSMAN**

- Twill sloppy trucker hat
- Chainstitch embroidered patch
- Dark Seas woven label branding

321000176



EA

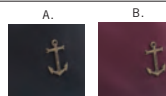
A. DK. NAVY  
B. BURGUNDY

032

**BOTTOMRY**

- Twill sloppy trucker hat
- Metal anchor badge
- Dark Seas woven label branding
- C/O

321000133



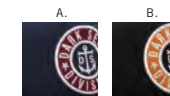
EA

A. BLACK  
B. BURGUNDY

**BARRICADE**

- Twill snapback
- Twill applique and embroidery
- Dark Seas woven label branding

321000183



EA

A. DK. NAVY  
B. BLACK

033

**LADDERWELL**

- Twill snapback
- Embroidered patch on front
- Dark Seas woven label branding

321000182



EA

A. BLACK  
B. GREEN



**MAGAZINE**

- Twill snapback
- Leather compression closure
- Metallic embroidered twill patch
- Dark Seas woven label branding
- C/O

321000148



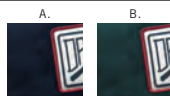
EA

A. DK. NAVY

**SWABBIE**

- Twill sloppy snapback
- Soft visor
- Printed patch on front
- Web buckle closure
- Dark Seas woven label branding

321000179



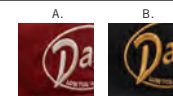
EA

A. DK. NAVY  
B. GREEN

**YARDBIRD**

- Corduroy sloppy snapback
- Satin stitch embroidery
- Leather closure
- Dark Seas woven label branding

321000178



EA

A. RUST  
B. BLACK

**REVELLE**

- Twill sloppy snapback
- Chainstitch embroidery
- Dark Seas woven label branding

321000177



EA

A. BLACK  
B. KHAKI

**YELLOWS**

- Twill sloppy snapback
- Satin stitch embroidery
- Visor rope
- Dark Seas woven label branding

**321000181**

EA

A. KHAKI

036

**JAWS**

- Taslan sloppy snapback
- Satin stitch & print embellishment
- Embroidery on back
- Dark Seas woven label branding

**321000180**

EA

A. BLACK

**ANCHORS**

- 6-panel unstructured printed twill baseball hat
- Anchor metal badge on front
- Nylon web buckle closure
- Dark Seas woven label branding

**321000184**

EA

A. RUM RAISIN

037

**SPURS**

- 6-panel unstructured flannel baseball hat
- Poly trilobal lining
- Printed felt patch
- Embroidery on back
- Leather closure
- Dark Seas woven label branding

**321000185**

EA

A. BLACK

**CHUMMER**

- 6-panel unstructured microfiber hat
- Woven label on front
- Removable sun shade on back
- Dark Seas woven label branding

321000186



EA

A. DK. NAVY

038

**SKIPPY**

- Novelty knit beanie with cuff
- Leather patch
- Dark Seas woven label branding
- 100% acrylic

321100029



EA

A. BLACK

039

**SCOTTIE**

- Waffle knit beanie with cuff
- Chainstitch embroidery
- Dark Seas woven label branding
- 100% acrylic

321100030



EA

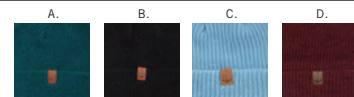
A. DK. NAVY

039

**KNIGHTSHEAD**

- Short beanie with cuff
- DS Anchor leather label
- Dark Seas woven label branding
- 100% acrylic
- C/O

321100003



EA

A. DEEP ATLANTIC

B. BLACK

C. LT. BLUE

D. BRICK RED

**COMSHAW**

- Mid-calf sock
- Jacquard logo and Grimb artwork
- Padded footbed
- Logo screenprint on bottom
- 85% cotton / 15% spandex

322300010



EA

A. BLACK



322300008



EA

A. GREY HEATHER  
B. WHITE**OVERCOAT**

32200001

- 6' jacquard knit short board sleeve
- Corduroy reinforced nose cone
- Nylon cord cinch opening with toggle
- Dark Seas woven label branding
- C/O



EA

A. DK. NAVY



**FROTH PINT GLASS**

- Front / Back printed
- Pint glass
- 100% glass
- C/O

322900002



A.

A. NAVY

EA



**WATER HAULER**

- 2 QT. canteen
- Desert blanket cloth covering
- Dark Seas screen print
- C/O

322500001



A.

A. ASSORTED

EA

EA



**BUOY KEYCHAIN**

- Plastic buoy floating keychain
- Waterproof compartment
- C/O

321700000



A.

A. RED

EA



**DARK SEAS STICKER PACK III**

- Assorted graphics
- 10 Pack

322100008



A.

A. ASSORTED

EA

EA



**DOCK STICKER LARGE**  
**DOCK STICKER SMALL**

- 25 pack
- C/O

322100003  
322100004



EA

A. ASSORTED



**SPANNER STICKER LARGE**  
**SPANNER STICKER SMALL**

- 25 pack
- C/O

322100005  
322100006



EA

A. ASSORTED



**DUFFLE BAG POP**

- Heavyweight cotton canvas
- 26" X 36"
- Pull cord closure
- Dark Seas logo screen print on front and back of bag
- C/O

801000010



EA

A. WHITE



**CREEPER POP**

- Screen printed wooden sign
- Heavy duty metal stem and base plate
- C/O

801000012



EA

A. ASSORTED





**OIL PAINTING POP**

- Screen printed wooden sign
- Heavy duty metal stem and base plate
- C/O

**801000011**



EA

A. ASSORTED



**JOURNEYMAN POP**

- Screen printed wooden sign
- Heavy duty metal stem and base plate
- C/O

**801000006**



EA

A. ASSORTED





**BOWSPRIT**

- Coaches jacket
- Screenprint on front & back
- 100% poly

41300004



XXS XS S M L  
A. BLACK



**PROWESS**

- Longsleeve collared woven oversized shirt
- 100% cotton

41160001



XXS XS S M L  
A. NAVY / BURGUNDY



**BAILIN**

- Longsleeve collared woven shirt
- 100% cotton

41160002



XXS XS S M L  
A. DEEP ATLANTIC



**HULL**

- Shirt Dress double woven plaid
- 90% cotton / 10% poly

41600001



XXS XS S M L  
A. BLACK

**WAKE POCKET TEE**

- Short sleeve pocket tee
- High-low hem side vents
- 100% cotton

411000002



XXS XS S M L

A. NAVY / RED

**CASTOFF**

- 3/4 sleeve raglan
- Self colored functional buttons
- Embroidery on front
- 50% poly / 38% cotton / 12% rayon

407300005



XXS XS S M L

A. HEATHER GREY

**SALTY**

- Relaxed fit raglan crewneck fleece
- Rib side panels
- 80% cotton / 20% poly

412000001



XXS XS S M L

A. BLACK

**AVALON**

- Raglan pullover hoodie
- Embroidery on front & back
- 80% cotton / 20% poly

412000002



XXS XS S M L

A. NAVY



**MASTERY**

- Fleece hoodie
- Front pouch pocket
- Screenprint on front & back
- 80% cotton / 20% poly

401100008



S M L

A. BLACK



**YING YANG WAVE**

- Overdyed crew fleece
- Screenprint on front & back
- 50% cotton / 50% poly

401800001



S M L

A. DUSTY RUM RAISIN



**STING RAY**

- Longsleeve tee
- Screenprint on front & sleeves
- Enzyme / silicone wash after print
- 100% cotton

407600001



S M L

A. WHITE



**DOCK SIRENS**

- Longsleeve tee
- Screenprint on front & back
- Enzyme / silicone wash after print
- 100% cotton

407600002



S M L

A. BLACK



**MAGIC STICK**

- 3/4 sleeve raglan
- Contrast heathered sleeves
- Screenprint on front
- 50% poly / 50% rayon

407200021



XXS XS S M L  
A. HEATHER GREY / PORT ROYALE



**DRINKING DEN**

- 3/4 sleeve raglan
- Contrast heathered sleeves
- Screenprint on front
- 50% poly / 50% rayon

407200022



XXS XS S M L  
A. DUSTY LIGHT GREY / PEACOCK



**LIGHTHOUSE GRAVE**

- 3/4 sleeve raglan
- Contrast heathered sleeves
- Screenprint on front
- 50% poly / 50% rayon

407200023



XXS XS S M L  
A. DUSTY LIGHT GREY / HEATHER GREY



**CASTOFF**

- Rolled and tacked short sleeve
- Screenprint on front & back
- 50% poly / 50% rayon

407500002



XXS XS S M L  
A. DUSTY LT. GREY / BLACK

**ENDEAVOUR**

- Short sleeve ringer tee
- Screenprint on front
- 50% cotton / 50% poly

404900002



XXS XS S M L

A. CREME / BLACK

**MERMAID SKELETON**

- Short sleeve ringer tee
- Screenprint on front
- 50% cotton / 50% poly

404900001



XXS XS S M L

A. CREME / BRICK

**SKULL ANCHOR**

- Short sleeve V neck tee
- Screenprint on front
- 75% poly / 25% cotton

408300001



XXS XS S M L

A. NAVY

**GET DEAD**

- Short sleeve V neck tee
- Screenprint on front
- 75% poly / 25% cotton

408300002



XXS XS S M L

A. NATURAL



**JOIN OR DIE**

- Short sleeve pocket tee
- Screenprint on front & back
- 100% cotton

406100002



XXS XS S M L  
A. DUSTY BLACK



**DOCK SIRENS**

- Short sleeve pocket tee
- Screenprint on front
- 100% cotton

406100001



XXS XS S M L  
A. OFF WHITE



**FAIRWINDS**

- Short sleeve tee
- Screenprint on front
- 100% cotton

404000018



XXS XS S M L  
A. DUSTY HARBOR BLUE



**ANCHOR SPRAY**

- Short sleeve tee
- Screenprint on front
- 100% cotton

404000017



XXS XS S M L  
A. DUSTY LIGHT GREY



**MAGIC STICK**

- Pigment dyed raw edge armhole tank
- Screenprint on front
- 100% cotton

403200020



XXS XS S M L

A. DUSTY BLACK



**MESMERIZE**

- Pigment dyed raw edge armhole tank
- Screenprint on front
- 100% cotton

403200021



XXS XS S M L

A. RUM RAISIN



**YING YANG WAVE**

- Over dyed triblend racer back tank
- Screenprint on front
- 50% poly / 25% cotton / 25% rayon

402100011



XXS XS S M L

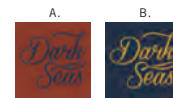
A. HEATHER GREY



**FREEBOARD**

- Anchor back tank
- Custom taping on back
- Embroidery on front
- Dark Seas woven flag label
- 55% poly / 45% cotton
- C/O

403800002



XXS XS S M L

A. PICANTE

B. NAVY





**DARK SIRENS BEANIE**

- Beanie with cuff
- Dark Seas woven label branding

421100003



EA

- A. BLACK
- B. RED / BLACK

**RED RUM**

- Corduroy brimmed sun hat
- Embroidered Spanner logo
- 100% cotton

421000006



EA

- A. PICANTE

**THE DOCK POP**

- Screen printed wood sign
- Heavy duty metal stem and base plate
- C/O

801000002



EA

- A. ASSORTED

**SPANNER POP**

- Screen printed wood sign
- Heavy duty metal stem and base plate
- C/O

801000004



EA

- A. ASSORTED

**DOCK SIREN POP**

- Screen printed wood sign
- Heavy duty metal stem and base plate
- C/O

801000005



EA

- A. ASSORTED

# SALES REPRESENTATIVES

## SALES REPRESENTATIVES

SOUTHERN CALIFORNIA / TEXAS  
JAKE LOBAN  
MOBILE: 760.500.6885  
EMAIL: JAKE@LOSERMACHINE.COM

PACIFIC NORTHWEST / NORTHERN CALIFORNIA  
BURL DARDEN  
LEVI CAMPBELL  
MOBILE: 541.513.1209  
EMAIL: BURL@LOSERMACHINE.COM  
EMAIL: LEVI@LOSERMACHINE.COM

ROCKIES -UT, CO, WY  
JAKE HOBBS  
PHONE: 801.712.8870  
EMAIL: JAKE@COANENT.COM

SOUTHWEST / NV, AZ, NM  
SHELBY PETERSEN  
PHONE: 602.509.8070  
EMAIL: SHELBY@COANENT.COM

NORTHEAST / SOUTHEAST  
NICK LHOTSKY  
ANDREW MERCIER  
PHONE: 443.373.3283  
FAX: 949.596.8437  
EMAIL: NICK@LOSERMACHINE.COM  
EMAIL: ANDREW@LOSERMACHINE.COM

MIDWEST  
LAURA KARELS  
PHONE: 612.743.7969  
EMAIL: LAURA\_KARELS@YAHOO.COM

DOMESTIC / INTERNATIONAL SALES INQUIRIES  
CHRIS BRODERS  
PHONE: 949.596.8401 EXT. 238  
FAX: 949.596.8437  
EMAIL: CHRIS@LOSERMACHINE.COM





17462 VON KARMAN AVE.  
IRVINE, CA 92614  
[WWW.DARKSEAS.COM](http://WWW.DARKSEAS.COM)