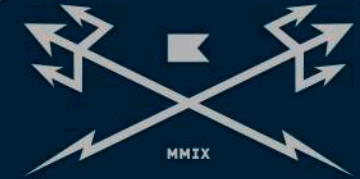




DARK SEAS



MMIX

DIVISION

SPRING 2021

VENTURE PAST THE SHORELINE



DARK SEAS  
DIVISION



HORIZON LINE  
COLLECTION

# HORIZON LINE COLLECTION

## MONTAUK

311500076



Navy

S M L XL XXL

Short sleeve printed poplin shirt  
Scalloped hem  
Chest pocket  
Tortoise buttons  
Dark Seas woven label branding  
100% organic cotton

## WAINSCOTT

311500077



White

S M L XL XXL

Short sleeve slub poplin shirt  
Straight hem  
Convertible collar  
Welt chest pocket  
Pearl buttons  
Dark Seas woven label branding  
100% organic cotton



# HORIZON LINE COLLECTION

## BRIDGEHAMPTON

311300007



Navy / White

## GREENPORT

311000070



Red / Royal



Black / Pink

## NORTHVILLE

311000071



White

S M L XL XXL

Striped short sleeve polo  
30s cotton jersey  
Rib collar  
Pearl button placket  
Embroidered shark patch on chest  
Dark Seas woven label branding  
Fair Trade certified factory  
100% cotton

S M L XL XXL

Striped short sleeve pocket crew  
30s cotton jersey  
Rib neck band  
Dark Seas woven label branding  
Fair Trade certified factory  
100% cotton

S M L XL XXL

Engineered stripe short sleeve crew  
30s cotton jersey  
Contrast striped neck tape  
Rib neck band  
Satin stitch embroidery on chest  
Dark Seas woven label branding  
Fair Trade certified factory  
100% cotton

# HORIZON LINE COLLECTION

## SOUTHOLD

315200066



Navy

28 30 31 32 33 34 36 38

Slack fit  
4-way stretch board short  
18" outseam  
165gsm with sublimation print  
Scalloped hem with self fabric binding  
Drawcord cinch in waistband  
Patch back pocket with flap  
Elastic shock cord key loop  
Logo print on inside waistband  
Woven patch with merrow edge  
36% poly / 34% Repreve / 24% cotton / 6% spandex

## GREENWICH

315200067



Navy / Khaki

28 30 31 32 33 34 36 38

Slack fit  
4-way stretch board short  
18" outseam  
165gsm  
Drawcord cinch in waistband  
Side Seam pockets  
Patch back pocket with flap  
Elastic shock cord key loop  
Logo print on inside waistband  
Woven patch with merrow edge  
36% poly / 34% Repreve / 24% cotton / 6% spandex

## PAWTUCKET

315200070



Khaki

S M L XL XXL

Twill elastic waist trunk  
All over embroidered artwork  
18" outseam  
Slash side pockets  
Welt back pocket  
Flat drawcord waist  
Embroidered logo on leg  
Woven label branding  
100% cotton

# HORIZON LINE COLLECTION

## MARION

312000047



Dk. Navy

Mauve

S M L XL XXL

Pigment dyed 380g custom crew fleece  
 Rib cuff and waistband  
 Embroidered twill patch on chest  
 Dark Seas woven label branding  
 88% cotton / 22% poly

## YARMOUTH

311000072



Dk. Navy

Mauve

S M L XL XXL

Pigment dyed short sleeve pocket crew  
 30s cotton jersey  
 Contrast striped neck tape  
 Rib neck band  
 Dark Seas woven label branding  
 Fair Trade certified factory  
 100% cotton

## SWANSEA

315200068



Dk. Navy

Mauve

28 30 31 32 33 34 36 38

Slack fit  
 4-way stretch board short  
 18" outseam  
 165gsm with pigment over dye  
 Scaloped hem with self fabric binding  
 Drawcord cinch in waistband  
 Side seam pockets  
 Patch back pocket with flap  
 Elastic shock cord key loop  
 Logo print on inside waistband  
 Woven patch with merrow edge  
 51% cotton / 45% poly / 4% spandex

# HORIZON LINE COLLECTION

## INTERNATIONAL

304500001



White



Dusty Navy

S M L XL XXL

Organic tee  
Classic Fit  
100% organic cotton

## CORNER BAR

304500002



Graphite



Scour

S M L XL XXL

Organic tee  
Classic Fit  
100% organic cotton

## LOOSEN UP

304500003



Dusty Navy



Black

S M L XL XXL

Organic tee  
Classic Fit  
100% organic cotton



# HORIZON LINE COLLECTION

## WHALLEY

321000341



Navy



White

OS

Unstructured twill 6-panel cap  
Satin stitch embroidery on front  
Nylon web closure with buckle  
Dark Seas woven label branding

## BURWELL

321000343



White / Navy




Navy / Green

OS

Unstructured twill 6-panel cap  
Satin stitch embroidery on front  
Snap closure  
Dark Seas woven label branding



► DARK SEAS DIVISION  BEACHSIDE COLLECTION ◀

*You're here!*  




World Famous Pacific & Atlantic

# BEACHSIDE COLLECTION

## CRANSTON

311500078



Pink / Green

S M L XL XXL

Short sleeve slub poplin shirt  
Straight hem  
Convertible collar  
Welt chest pocket  
Pearl buttons  
Dark Seas woven label branding  
100% organic cotton

## WESTERLY

311500079



Pink / Green

S M L XL XXL

Short sleeve striped cotton/rayon blend shirt  
Straight hem  
Convertible collar  
Chest pocket with embroidery  
Pearl buttons  
Dark Seas woven label branding  
55% organic cotton / 45% rayon



# BEACHSIDE COLLECTION

## ROCHESTER

311300008



Black

S M L XL XXL

Pique short sleeve polo  
Rib collar  
Pearl button placket  
Contrast striped neck tape  
Embroidered shark patch on chest  
Dark Seas woven label branding  
Fair Trade certified factory  
100% cotton

## GREENPORT

311000070



Black / Pink



Red / Royal

S M L XL XXL

Striped short sleeve pocket crew  
30s cotton jersey  
Rib neck band  
Dark Seas woven label branding  
Fair Trade certified factory  
100% cotton



DARK SEAS  
DIVISION 32

Dark Seas

# BEACHSIDE COLLECTION

## BREWSTER

315200069



Black / White

## MARSHFIELD

315200071



Aqua

## WARWICK

315200072



Black

28 | 30 | 31 | 32 | 33 | 34 | 36 | 38

Slack fit  
4-way stretch board short  
18" outseam  
165gsm with sublimation print  
Scalloped hem with contrast self binding  
Drawcord cinch in waistband  
Side seam pockets  
Patch back pocket with flap  
Elastic shock cord key loop  
Logo print on inside waistband  
Woven patch with merrow edge  
36% poly / 34% Repreve / 24% cotton / 6% spandex

S | M | L | XL | XXL

Poly stretch elastic waist trunk  
18" outseam  
Slash side pockets  
Welt back pocket  
Hidden drawcord waist  
Woven label branding  
96% poly / 4% stretch

S | M | L | XL | XXL

Poly stretch elastic waist trunk  
17 1/2" outseam  
Side seam pockets  
Patch back pocket  
Flat drawcord waist  
Embroidered twill patch on leg  
Woven label branding  
96% poly / 4% stretch

# BEACHSIDE COLLECTION

## MARION

312000047



Mauve



Mauve

S M L XL XXL

Pigment dyed 380g custom crew fleece  
 Rib cuff and waistband  
 Embroidered twill patch on chest  
 Dark Seas woven label branding  
 88% cotton / 22% poly

## YARMOUTH

311000072



Mauve



Mauve

S M L XL XXL

Pigment dyed short sleeve pocket crew  
 30s cotton jersey  
 Contrast striped neck tape  
 Rib neck band  
 Dark Seas woven label branding  
 Fair Trade certified factory  
 100% cotton

## SWANSEA

315200068



Mauve



Mauve

28 30 31 32 33 34 36 38

Slack fit  
 4-way stretch board short  
 18" outseam  
 165gsm with pigment over dye  
 Scalloped hem with self fabric binding  
 Drawcord cinch in waistband  
 Side seam pockets  
 Patch back pocket with flap  
 Elastic shock cord key loop  
 Logo print on inside waistband  
 Woven patch with merrow edge  
 51% cotton / 45% poly / 4% spandex



# BEACHSIDE COLLECTION

## SHINE BRIGHT

305200057



Black



Chalky Mint

S M L XL XXL

Pigment tee  
Soft wash garment dyed fabric  
Chest embroidery  
Classic fit  
100% cotton

## TAKE OUT

305200058



White



Graphite

S M L XL XXL

Pigment tee  
Soft wash garment dyed fabric  
Chest embroidery  
Classic fit  
100% cotton

## COCKTAILS

305200059



Orchid



Pepper

S M L XL XXL

Pigment tee  
Soft wash garment dyed fabric  
Chest embroidery  
Classic fit  
100% cotton

# BEACHSIDE COLLECTION

## NEWHALL

321000342



Navy



Khaki

OS

Unstructured brushed twill 6-panel cap  
Embroidered shark patch on front  
Snap closure  
Dark Seas woven label branding

## LAMBERT

321000344



Black



Red

OS

Unstructured brushed twill 6-panel cap  
Embroidered twill patch on front  
Snap closure  
Dark Seas woven label branding

## MEADOWLARK

321000345



Navy



Khaki

OS

Unstructured brushed twill 5-panel snapback  
Embroidered twill patch on front  
Dark Seas woven label branding

*Dark Seas*

# LOW TIDE

## COLLECTION



# LOW TIDE COLLECTION

## JONAH

311500080



Green

S M L XL XXL

Short sleeve cotton/rayon blend shirt  
Straight hem  
Convertible collar  
Chest pocket  
Pearl buttons  
Dark Seas woven label branding  
55% organic cotton / 45% rayon

## MALONE

311500082



Terra Cotta

S M L XL XXL

Short sleeve dobby plaid shirt  
Straight hem  
Convertible collar  
Chest pocket  
Pearl buttons  
Dark Seas woven label branding  
100% organic cotton





DARK SEAS  
DIVISION  
M

DARK SEAS  
DIVISION

DARK SEAS

# LOW TIDE COLLECTION

## DAVIDSON

315200073



Green

## BRAD

315200074



Black



Green

## HILL

315000014



Navy



Black / White

28	30	31	32	33	34	36	38
----	----	----	----	----	----	----	----

Current fit  
4-way stretch board short  
19" outseam  
190gsm with DWR coating  
Welded inseam and hem  
No side seam  
Welt side pocket with coil zipper  
Elastic shock cord key loop  
Logo print on inside waistband  
Woven label branding on leg  
94% poly / 6% spandex

28	30	31	32	33	34	36	38
----	----	----	----	----	----	----	----

Slack fit  
4-way stretch board short  
18" outseam  
165gsm with sublimation print  
Drawcord cinch in waistband  
Patch back pocket with flap  
Elastic shock cord key loop  
Logo print on inside waistband  
Woven patch with merrow edge  
36% poly / 34% Repreve / 24% cotton / 6% spandex

28	30	31	32	33	34	36	38
----	----	----	----	----	----	----	----

Yarn dye plaid / hounds tooth chino short  
19" outseam  
Tortoise button  
Slash side pockets  
Welt back pockets  
Printed pocket bags  
Woven label branding  
100% Cotton



DARK  
CREWS

DARK  
CREWS

# LOW TIDE COLLECTION

## JUSTIN

312000048



Green



Black

S M L XL XXL

Tie dyed 380g custom pull over hooded fleece  
Embroidered twill patch on front  
Dark Seas woven label branding  
88% cotton / 22% poly

## SHEA

311000073



Black



Green

S M L XL XXL

Tye dyed short sleeve pocket crew  
30s cotton jersey  
Rib neck band  
Contrast striped neck tape  
Dark Seas woven label branding  
Fair Trade certified factory  
100% cotton



## CHRIS

315100004



Green

S M L XL XXL

Tie dye lounge short  
380 gsm french terry  
19" outseam  
Flat drawcord waist  
Side seam pockets  
Patch back pocket  
Embroidered twill patch on leg  
Woven label branding  
88% cotton / 22% poly



# LOW TIDE COLLECTION

## IVY LEAGUE

301700004



Terracotta



Black

S M L XL XXL

Pigment crew fleece  
Soft wash garment dyed fabric  
Classic fit  
80% cotton / 20% poly

## ON THE ROCKS

306200002



Mustard



Black

S M L XL XXL

Pigment Pocket tee  
Soft wash garment dyed fabric  
Chest embroidery  
Classic fit  
100% cotton

## BEACH CLUB

305200056



Ivory



Black

S M L XL XXL

Pigment Pocket tee  
Soft wash garment dyed fabric  
Chest embroidery  
Classic fit  
100% cotton

# LOW TIDE COLLECTION

## CUDDY

321000346



White / Teal



Black

## PATRICK

321000352



Black



Blue

## GOTHARD

321000320



White / Black



Blue / Navy

OS

Unstructured brushed twill 5-panel snapback  
Embroidered and printed logo on front  
Dark Seas woven label branding

OS

Low profile 6-panel snapback  
Curved visor  
Embroidered logo on front  
Dark Seas woven label branding

OS

Twill bucket hat  
Embroidered shark patch on front  
2-tone hat band  
Dark Seas woven label branding



DARK \* SEAS

DARK \* SEAS

DARK \* SEAS

NEED HIGH RES PHOTO

# BOARDSHORTS / WALK SHORTS

## BULKHEAD

315200075



Desert Camo

28	30	31	32	33	34	36	38
----	----	----	----	----	----	----	----

Current fit  
 4-way stretch board short  
 19" outseam  
 190gsm with DWR coating  
 Welded inseam and hem  
 No side seam  
 Welt side pocket with coil zipper  
 Elastic shock cord key loop  
 Logo print on inside waistband  
 Woven label branding on leg  
 94% poly / 6% spandex

## FIRST MATE

315200039



Desert Camo

28	30	31	32	33	34	36	38
----	----	----	----	----	----	----	----

2-way stretch amphibious cargo shorts  
 19" outseam  
 150gsm with pigment print  
 Engraved logo button  
 Bellowed military cargo pockets  
 Patch back pocket with flap  
 Woven label branding  
 51% Cotton / 45% Poly / 4% Spandex



# OFFSHORE

COMBO KIT

DARK SEAS

DARK SEAS

DARK SEAS  
DIVISION

DARK SEAS

DARK SEAS

DARK SEAS

# OFFSHORE COMBO KIT

## TACK

31500013



Lt. Navy



Black

28	30	32	34	36	38
----	----	----	----	----	----

Mechanical stretch memory fabric short  
 Zipper side pockets  
 Plyer pocket on back panel  
 Back patch pocket with velcro flap  
 Striped drawcord through waist  
 Woven label branding  
 100% poly  
 C/O

## PORT

313000132



Black

S	M	L	XL	XXL
---	---	---	----	-----

Mechanical stretch  
 Memory fabric hooded windbreaker  
 3k/3k laminate coating  
 Coil zip front and chest pocket  
 Patch pockets at waist  
 Striped drawcord hood  
 Zippered pit vents  
 Shock cord waist cinch  
 Dark Seas woven label branding  
 100% poly  
 C/O

# KNITS

## BARGE

311000074



White

S M L XL XXL

Striped short sleeve crew  
30s cotton jersey  
Embroidered shark patch on chest  
Rib neck band  
Dark Seas woven label branding  
Fair Trade certified factory  
100% cotton

## FERRY

311000075



Navy / Gold

S M L XL XXL

Stripe short sleeve pocket crew  
30s cotton jersey  
Rib neck band  
Dark Seas woven label branding  
Fair Trade certified factory  
100% cotton

## ETON

311000061



Pink



Lt. Navy



White



Black

S M L XL XXL

Short sleeve pocket crew  
18s organic cotton slub Jersey  
Rib neck band  
Water based logo screen on pocket  
Dark Seas logo branding  
Fair Trade Certified Factory  
100% Organic Cotton

## WOVENS / VESTS

### SKIP

311500083



Camo

S M L XL XXL

Short sleeve printed poplin shirt  
Scalloped hem  
Chest pocket  
Dish buttons  
Dark Seas woven label branding  
100% organic cotton

### RAMON

313100001



Green

S M L XL XXL

Nylon vest with bomber collar  
Quilted thermal lining with insulation  
Patch pockets at waist  
Embroidered twill patch on chest  
Dark Seas woven label branding  
Shell: 100% nylon  
Lining: 100% polyester  
C/O



# POLAR FLEECE

## MANIFEST

312000050



Navy / Antique

S M L XL XXL

Polar fleece mock neck jacket  
Color blocked chest panel and sleeves  
Welt pockets at waist  
Zipper pocket on chest  
Zip front closure with woven pull tab  
Headmaster logo embroidery on chest  
Dark Seas woven label branding  
100% poly

## SHOALS

312000046



Black

S M L XL XXL

Hooded polar fleece jacket  
Mesh hood lining  
Striped drawcord with heat shrink tips  
Welt pockets at waist  
Zip front closure with cord pull  
Dark Seas screen print on reversed zipper tape  
Shock cord waist cinch  
Headmaster logo embroidery on chest  
Dark Seas woven label branding  
100% poly  
C/O

# JACKETS / PANTS

## TERMINAL

313000142



Black

S M L XL XXL

Pigment dyed twill chore coat  
Tonal chain stitch embroidery on chest  
DS anchor custom buttons  
Patch pockets at waist and chest  
Dark Seas woven label branding  
100% cotton

## ROCKPILES II

313000130



Blue

S M L XL XXL

Quilted nylon insulated jacket  
Thermal lining  
Embroidered twill patch  
Zip front with woven pull tab  
Ribbed cuffs  
Patch pockets at waist  
Dark Seas woven label branding  
100% nylon shell  
100% poly lining  
C/O

## UNION

314000009



Multi-stripe

28 30 32 34 36 38

Twill painter pant  
Classic straight leg fit  
15 1/2" leg opening  
Slash side pockets  
Coin pocket  
Back patch pockets  
Paint brush pocket on right side  
Key clip loop on back hip  
Dark Seas woven label branding  
100% cotton  
C/O

# CUSTOM FLEECE

## TRANSIT

312000049



Black

S M L XL XXL

330G custom pull over hooded fleece  
Felt applique and screenprint on back  
Satin stitch embroidery on front  
Dark Seas woven label branding  
80% cotton / 20% poly

## CABRILLO

312000045



Black

S M L XL XXL

Heavyweight 380g custom pull over hooded fleece  
Double layer felt applique and screenprint embellishment on back  
Satin stitch embroidery on front  
Dark Seas woven label branding  
58% cotton / 42% poly  
C/O

## MASON

312000042



Black

S M L XL XXL

Heavyweight 380g custom crew fleece  
Chenille and satin stitch embellishment on front  
Dark Seas woven label branding  
58% cotton / 42% poly  
C/O

# STOCK PULLOVER FLEECE

## SUBDIVIDE

301100106



Black Heather Grey

S M L XL XXL

Hooded pullover fleece  
Standard fit  
80% cotton / 20% poly

## SPARROWS

301100107



Gunmetal Heather Bone

S M L XL XXL

Hooded pullover fleece  
Standard fit  
80% cotton / 20% poly

## BATTALION

301100104



Tiger Camo Charcoal Heather

S M L XL XXL

Hooded pullover fleece  
Standard fit  
80% cotton / 20% poly  
C/O

# PIGMENT CREW FLEECE

## VICTORY

301700005



Black



Orchid

S M L XL XXL

Pigment crew fleece  
Soft wash garment dyed fabric  
Classic fit  
80% cotton / 20% poly

## CURRENCY

301700003



Navy



Crimson

S M L XL XXL

Pigment crew fleece  
Soft wash garment dyed fabric  
Classic fit  
80% cotton / 20% poly  
C/O

# GO-TO-COLLECTION

## GO-TO-CREW FLEECE

301700001



Orchid



Denim



Pepper



Topaz Blue



Graphite



Terracotta



White



White



Black



Mustard



Navy

## GO-TO-LONG SLEEVE TEE

309900004



Topaz Blue



Graphite



Terracotta



White



White



Black



Mustard



Navy

## GO-TO-TEE

305200035



White



Black



Mustard



Navy

S M L XL XXL

Pigment crew fleece  
Soft wash garment dyed fabric  
Chest embroidery  
Classic fit  
80% cotton / 20% poly  
C/O

S M L XL XXL

Pigment long sleeved tee  
Soft wash garment dyed fabric  
Chest embroidery  
Classic fit  
100% cotton  
C/O

S M L XL XXL

Pigment tee  
Soft wash garment dyed fabric  
Chest embroidery  
Classic fit  
100% cotton  
C/O

A black and white photograph of a jellyfish floating in dark water. The jellyfish is the central focus, with its bell-shaped top and long, trailing tentacles. The water is dark, and there is a faint reflection of the jellyfish on the surface above. The text 'TRANSDUCED ARTIST SERIES' is overlaid in the center of the image in a bold, white, sans-serif font.

**TRANSDUCED  
ARTIST SERIES**

# TRANSPOSED ARTIST SERIES

## FISH

301100108 | 304000326 | 309000156

## JELLY

309000155 | 304000327 | 301100109

## SHELL

304000325 | 309000157 | 301100110



Black



Black



Black



Black



Black



Black



Black



Black



Black

S M L XL XXL

Hooded pullover fleece  
Standard fit  
80% cotton / 20% poly

Stock Tee  
Standard fit  
100% cotton

Stock Long Sleeve Tee  
Standard fit  
100% cotton

S M L XL XXL

Stock Long Sleeve Tee  
Standard fit  
100% cotton

Stock Tee  
Standard fit  
100% cotton

Hooded pullover fleece  
Standard fit  
80% cotton / 20% poly

S M L XL XXL

Stock Tee  
Standard fit  
100% cotton

Stock Long Sleeve Tee  
Standard fit  
100% cotton

Hooded pullover fleece  
Standard fit  
80% cotton / 20% poly



# STOCK LONG SLEEVE TEE

## THE ORIGINAL

309000153



Cardinal



Black

S M L XL XXL

Stock Long Sleeve Tee  
Standard fit  
100% cotton

## VICTORY

309000154



White



Black

S M L XL XXL

Stock Long Sleeve Tee  
Standard fit  
100% cotton

## POUNCE

309000152



Black



Military Green

S M L XL XXL

Stock Long Sleeve Tee  
Standard fit  
100% cotton

# RECYCLED TEES

## GOOD FIGHT

305300014



Yellow



White

S M L XL XXL

Made of recycled materials  
Classic fit  
52% poly / 48% cotton

## KEEP IT CLEAN

305300013



White



Yellow

S M L XL XXL

Made of recycled materials  
Classic fit  
52% poly / 48% cotton  
C/O

## NO WASTE

305300012



Black



Blue

S M L XL XXL

Made of recycled materials  
Classic fit  
52% poly / 48% cotton  
C/O

# WICKING TEES

## BLUE FIN FLAG

305000046



Black



White

S M L XL XXL

Moisture wicking  
Standard fit  
100% poly  
C/O

## MARLIN FLAG

305000047



White



Black

S M L XL XXL

Moisture wicking  
Standard fit  
100% poly  
C/O

## MAKO FLAG

305000048



Silver



Black

S M L XL XXL

Moisture wicking  
Standard fit  
100% poly  
C/O

# STOCK TEES

## POUNCE

304000322



Heather Grey



Black

S M L XL XXL

Stock Tee  
Standard fit  
100% cotton

## SUBDIVIDE

304000320



White



Black

S M L XL XXL

Stock Tee  
Standard fit  
100% cotton

## SPARROWS

304000319



White



Sand

S M L XL XXL

Stock Tee  
Standard fit  
100% cotton

# STOCK TEES

## WAVES TO GRAVES

304000318



Black Powder Blue

S M L XL XXL

Stock Tee  
Standard fit  
100% cotton  
Puff ink

## PEACE OF MIND

304000317



Black Silver Spider Tie Dye

S M L XL XXL

Stock Tee  
Standard fit  
100% cotton

## THE ORIGINAL

304000321



Harbor Blue Black

S M L XL XXL

Stock Tee  
Standard fit  
100% cotton

# STOCK TEES

## PLUNGE

304000316



Black



Harbor Blue

S M L XL XXL

Stock Tee  
Standard fit  
100% cotton

## TAKE OVER

304400326



White



Black

S M L XL XXL

Select fit  
100% cotton  
C/O

## BALBOA

304400324



White



Black

S M L XL XXL

Standard fit  
100% cotton  
C/O

# HEADMASTER ESSENTIALS

## HEADMASTER

304400090



Cream Navy Heather Grey Black

S M L XL XXL

Premium tee  
Select fit  
100% cotton  
C/O

## HEADMASTER

309000037



Coffee White Black

S M L XL XXL

Stock long sleeve tee  
Select fit  
100% cotton  
C/O

## HEADMASTER

301100073



Heather Grey Gold Black

S M L XL XXL

Stock pullover fleece  
Standard fit  
80% cotton / 20% poly  
C/O

*Dark Seas*  
COAST TO COAST

*Dark Seas*  
EXPLORATION  
COAST TO COAST

*Dark Seas*  
DIVISION

DARK  
SEAS



# HEADWEAR

## BEECHER

321000348



Black



Kelly

OS

Twill unstructured trucker hat  
Embroidered patch with merrow edge  
Dark Seas woven label branding

## MASONIC

321000337



Black



Brown

OS

Twill unstructured trucker hat  
Printed patch with merrow edge  
Dark Seas woven label branding  
C/O

## TROPHY

321000349



Black



Navy

OS

Low profile 6-panel trucker hat  
Curved visor  
Embroidered logo on front  
Dark Seas woven label branding

# HEADWEAR

## WOOSTER

321000350



Black



Camo

## MURRE

321000300



Camo



Black



Orange / Khaki



Black / White



Navy / White

## TAILING

321000339



Black



Camo

OS

Low profile 6-panel trucker hat  
Curved visor  
Embroidered twill patch on front  
Dark Seas woven label branding

OS

Low profile 6-panel trucker hat  
Curved visor  
Embroidered logo on front  
Dark Seas woven label branding  
C/O

OS

Low profile 6-panel trucker hat  
Curved visor  
Embroidered logo on front  
Dark Seas woven label branding  
C/O

# HEADWEAR

## MELBOURNE

321000351



Navy



Heather / Black

## BODIE

321000338



Black



Rust

## FULMAR

321000297



Navy



Red

OS

Low profile 6-panel snapback  
Curved visor  
Embroidered twill patch on front  
Dark Seas woven label branding

OS

Unstructured brushed bull denim 6-panel cap  
Felt applique on front  
Contrast striped interior taping  
Dark Seas woven label branding  
C/O

OS

Unstructured brushed twill 6-panel cap  
Tonal satin stitch embroidery  
Contrast striped interior taping  
Dark Seas woven label branding  
C/O

# HEADWEAR

## SAGUARO

321000334



Golden Brown



Black

## TALBERT

321000318



Camo



Black

## TRIDENTS TRUCKER

321000225



Black



Camo

OS

Unstructured duck canvas 6-panel cap  
Nylon web closure with buckle  
Dark Seas woven label branding  
C/O

OS

Twill unstructured trucker hat  
Embroidered patch with merrow edge  
Dark Seas woven label branding  
C/O

OS

Unstructured trucker hat  
Embroidery on front  
Dark Seas woven label branding  
C/O

# HEADWEAR

## BOTTOMRY

321000133



Camo



Black



Dk. Navy

## TRIDENTS

321000226



Bubble Camo



Navy



Black

## JAMMER

321000304



Black

OS

Twill unstructured trucker hat  
Metal anchor badge  
Dark Seas woven label branding  
C/O

OS

Unstructured snapback  
Embroidery on front  
Dark Seas woven label branding  
C/O

OS

Low profile 6-panel snapback  
Curved brim  
Woven patch on front  
Dark Seas woven label branding  
C/O

# HEADWEAR

## JOURNEYMAN

321000224



Gold



Black

OS

Unstructured snapback  
Embroidered twill appliqué on front  
Dark Seas woven label branding  
C/O

## ROCKHOPPER

321000299



Black / White

OS

Low profile 6-panel trucker hat  
Curved brim  
Metal anchor badge on front  
Dark Seas woven label branding  
C/O

# HEADWEAR

## RED CLOUD

321100067



Orange



Navy

OS

Regular fit waffle knit beanie with cuff  
Tonal satin stitch embroidery on cuff  
Dark Seas woven label branding  
100% acrylic  
C/O

## SCHEIDER

321100064



Red



Navy



Tobacco



Black

OS

Shallow fit waffle knit beanie with cuff  
Embroidered shark patch on cuff  
Dark Seas woven label branding  
100% acrylic  
C/O

# HEADWEAR

## KINTNER

321100062



Black Heather



Navy Heather



Green



Black

OS

Regular fit marled yarn beanie with cuff  
Woven label on cuff  
Dark Seas woven label branding  
100% acrylic  
C/O

## CRUISER

321100037



Gold



Dk. Navy



Black

OS

Regular fit beanie with cuff  
Embroidery on cuff  
Dark Seas woven label branding  
100% acrylic  
C/O





# ACCESSORIES

## HOODED TOWEL

313300002



Black

OS

Oversized pullover hooded towel  
Embroidered logos  
Quick-drying  
Fixed hood  
Side slits to hem  
100% cotton  
C/O

## HIGH SEAS 3PK

322300020



White



Red



Black

OS

Crew sock  
Jacquard logo and stripes  
Padded footbed  
Logo screen print on bottom  
75% Cotton / 22% Poly / 3% Elastane  
C/O

# SOCKS

## DAYBOARD

322300008



Black



Pink

OS

Jacquard logo and stripe  
Padded footbed  
Logo screen print on bottom  
75% cotton / 22% poly / 3% elastane

## HELBERTA

322300016



Black



Vanilla / Green

OS

Jacquard logo and stripe  
Padded footbed  
Logo screen print on bottom  
75% cotton / 22% poly / 3% elastane

# ACCESSORIES

## PISMO

322300017



Red



Grey

## CARMEL

322300018



Mineral Blue



Black



White

## WORKUP

322300012



Black



White

OS

Crew sock  
Jacquard logo and stripe  
Padded footbed  
Logo screen print on bottom  
85% cotton / 15% spandex  
C/O

OS

Crew sock  
Jacquard logo and stripe  
Padded footbed  
Logo screen print on bottom  
85% cotton / 15% spandex  
C/O

OS

Crew sock  
Jacquard logo and stripe  
Padded footbed  
Logo screen print on bottom  
85% cotton / 15% spandex  
C/O

# ACCESSORIES

## STICKER PACK VI

322100025



Assorted

OS

Assorted graphics  
10 pack  
C/O

## STICKER PACK - FISHING SERIES

322100026



Assorted

OS

Assorted graphics  
6 pack  
C/O

# ACCESSORIES

## NAVIGATOR STICKER PACK

322100027



Assorted

OS

24 Pack  
4" vinyl sticker  
C/O

## LARGE / SMALL HEADMASTER STICKER

322100030 / 322100031 / 322100028 / 322100029



Black



White

OS

Die cut vinyl decal  
Large: 5" x 8"  
Small: 3" x 5"  
C/O

## ENAMEL PINS

321600011 / 321600012 / 321600004



Assorted



Assorted



Antique Brass

OS

Enamel fill lapel pin  
Assorted finishes  
C/O

# ACCESSORIES

## DANGEROUS GOODS AIR FRESHENER

322600008



Assorted

OS

Dangerous Goods  
Coconut scent  
C/O

## PARA-DICE AIR FRESHENER

322600007



Assorted

OS

Paradice  
Wild Cherry Scent  
C/O

## SAILFISH AIR FRESHENER

322600006



Assorted

OS

Sailfish  
Nautical Breeze Scent  
C/O

P.O.P.

JELLYFISH P.O.P.

801000025



Black

OS

Double sided printed aluminum sign  
Hand stained wooden base

SHARK JAW P.O.P.

801000024



Black

OS

Double sided printed aluminum sign  
Hand stained wooden base  
C/O





Dark Seas

GRUNDÉNS

WATERMAN SOCIETY

# DS X GRUNDÉNS

## WEATHER WATCH II

313000140G



Black

Hi Viz

Green

Red

S M L XL XXL

420D nylon oxford weave fabric  
8K / 3K waterproof breathable  
Fully taped seams  
Sturdy zipper front with double storm flaps  
Adjustable hem  
Full-size hood with elastic draw string closure  
Hook-and-loop cinch cuff closures  
100% nylon  
C/O

## NEPTUNE BIB

314300003G



Black

S M L XL XXL

230-gram polyurethane-coated stretch polyester construction  
Waterproof RF welded seams throughout  
Adjustable suspenders with quick-release clips  
C/O

# DS X GRUNDÉNS

## PROW

311500084G



Black

S M L XL XXL

Mid-weight stretch short sleeve fishing shirt  
 Quick drying / moisture wicking fabric  
 50+ UVP sun protection  
 Anti-microbial treatment  
 Mesh inside back yoke  
 Vented at back armhole and bottom of back yoke  
 Chest pockets with flaps and slot for holding sunglasses  
 Zipper chest pocket  
 Custom anchor buttons  
 Co-branded woven labels  
 70% poly / 20% cotton / 10% elastaine

## TACK

315000015G



Black

S M L XL XXL

Mechanical stretch memory fabric short  
 Co-branded screenprint on leg  
 19" outseam  
 Zipper side pockets  
 Plyer pocket on back panel  
 Back patch pocket with velcro flap  
 Elastic cinch back panel  
 Striped drawcord through waist  
 Woven label branding  
 100% poly



DARK SEAS  
GRUNDÉNS

# DS X GRUNDÉNS

## WATERLINE

312000051G



Black

S M L XL XXL

Custom hooded pullover fleece  
 Quick drying / moisture wicking / stretch performance fabric  
 Anti-microbial treatment  
 Chain stitch and satin stitch embroidery on back  
 Satin stitch embroidery on chest  
 Co-branded woven labels  
 58% poly / 21% viscose / 11% spandex / 10% nylon

## DEEP BLUE

309000151G



White



Black

S M L XL XXL

Stock Long Sleeve Tee  
 Standard fit  
 100% cotton



# DS X GRUNDÉNS

## NIGHT SHIFT

304000314G



Black



Heather Grey

S M L XL XXL

Stock Tee  
Standard fit  
100% cotton

## SUSPENDERS

304000315G



Orange



White

S M L XL XXL

Stock Tee  
Standard fit  
100% cotton

## STORY BOOK

304000324G



Tar



Navy

S M L XL XXL

Stock Tee  
Standard fit  
100% cotton

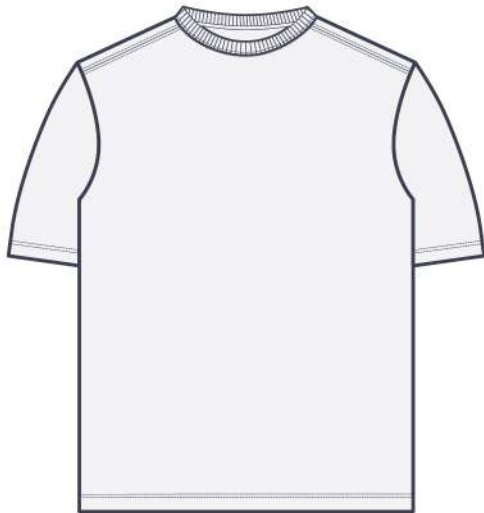
# TEE SHIRT FIT GUIDE

---

CLASSIC



FIT:  
Loose



STANDARD



FIT:  
Relaxed



SELECT



FIT:  
Slimmer





# BOARDSHORT FIT GUIDE

## FLOOD FIT

**17" outseam**  
Retro styling

**CONSTRUCTION:**

2-way stretch  
160gsm  
51% cotton / 45% poly / 4% elastane



## SLACK FIT

**18" outseam**  
Scalloped hem

**CONSTRUCTION:**

4-way stretch  
160gsm  
70% poly / 20% cotton / 10% spandex



## CURRENT FIT

**19" outseam**  
Modern fit / Timeless silhouette

**CONSTRUCTION:**

4-way stretch  
190gsm with DWR coating  
90% poly / 10% elastane





## SALES REPRESENTATIVES

### California

*Bob Tassin*  
Phone: 949.573.3958  
Email: bob@darkseas

### Texas, Arizona

*Curtis Wheeler*  
Phone: 832.776.7116  
Email: curtiswheeler91@yahoo.com

### Northeast

*Joe Comba*  
Phone: 914.393.9897  
Email: joe@darkseas.com

### Southeast

*Andrew Mercier*  
Phone: 443.614.4422  
Email: andrew@darkseas.com

### Domestic and International Sales Inquiries

*Nick Lhotsky*  
Phone: 949.596.8401 Ext. 263  
Cell: 443.373.3283  
Email: nick@darkseas.com

### Toll Free

888.215.3813

### OR, WA, ID, MT, UT, CO, WY, NV,

*Burl Darden*  
Phone: 541.513.1209  
Email: burl@darkseas.com

### Levi Campbell

Phone: 360.510.6811  
Email: levi@darkseas.com

### Midwest

*Laura Karels*  
Phone: 612.743.7969  
Email: laura\_karels@yahoo.com

### Florida

*Craig Frick*  
Phone: 772.985.9889  
Email: craigfrick.fl@gmail.com

### PHOTOGRAPHERS:

*Carlos Marquina*  
*Dylan Fleming*  
*Jacob Strahlo*

17462 VON KARMAN AVE. IRVINE, CA  
92614 • DARK SEAS.COM