



# DARK SEAS

VENTURE PAST  THE SHORELINE

FALL 2020





DARK SEAS  
EST. 1983

DARK SEAS  
DIVISION

DARK SEAS

R



# ADVENTURE COLLECTION

## YOSEMITE

313000133



Black

## QUIVER

312000034



Black / Camo

## RECRUIT

313000081



Rust / Green

S M L XL XXL

Quilted nylon insulated jacket  
Camo poly fleece lining  
Zip front with leather pull tab  
Ribbed cuffs  
Waist and chest pockets  
DS anchor pin on collar  
Dark Seas woven label branding  
100% nylon shell  
100% poly lining

S M L XL XXL

Polar fleece mock neck jacket  
Color blocked chest panel and sleeves  
Welt pockets at waist  
Zip front closure with woven pull tab  
Headmaster logo embroidery on chest  
Dark Seas woven label branding  
100% poly

S M L XL XXL

Plaid flannel shirt jacket  
Sherpa lining  
Taffeta collarstand, sleeve lining, and int. cuff facing  
Chest pockets with flaps  
Welt pockets at waist  
Custom anchor buttons  
DS anchor pin on collar  
Dark Seas woven label branding  
100% cotton shell  
100% poly lining



# ADVENTURE COLLECTION

## ZION

311600066



Gold / Rust

S M L XL XXL

Custom yarn dye plaid flannel  
Chest pockets with flaps  
Dish buttons  
DS anchor pin on collar  
Dark Seas woven label branding  
100% cotton

## ACADIA

311200002



Black / Gold

S M L XL XXL

Long sleeve 2-tone rib knit hood  
Contrast heather jersey hood  
Rib cuffs  
Overlock details  
Satin stitch logo embroidery  
Dark Seas woven label branding  
Fair Trade certified factory  
100% cotton

## BOILERMAKER

314200004



Black

S M L XL XXL

Elastic waist corduroy pant  
Slightly tapered leg  
15" leg opening  
Slash side pockets  
Patch pockets on back with flaps  
Flat cotton drawcord waist  
Dark Seas woven label branding  
100% cotton







# ADVENTURE COLLECTION

## DESTINATION

309900007



Denim



Black

S M L XL XXL

Pigment long sleeve tee  
Soft wash garment dyed fabric  
Classic fit  
100% cotton

## EXPLORATION

305200049



Burnt Orange



White

S M L XL XXL

Pigment tee  
Soft wash garment dyed fabric  
Classic fit  
100% cotton

## ADVENTURE

305200048



Blue Spruce



Sandstone

S M L XL XXL

Pigment tee  
Soft wash garment dyed fabric  
Classic fit  
100% cotton







# ADVENTURE COLLECTION

## TRIDENTS SNAPBACK

321000226



Bubble Camo

## SAGUARO

321000334



Golden Brown



Black

## KINTNER

321100062



Green



Black

OS

Unstructured snapback  
Embroidered logo on front  
Dark Seas woven label branding

OS

Unstructured duck canvas 6-panel cap  
Nylon web closure with buckle  
Dark Seas woven label branding

OS

Regular fit beanie with cuff  
Woven label on cuff  
100% acrylic





DARK SEAS



PACIFIC - ATLANTIC



# OFF DUTY COLLECTION

## TEAMSTER

313000134



Navy

S M L XL XXL

Twill gas station jacket  
Felt appliqué and satin stitch embellishment on back  
Zip front with leather pull tab  
Welt chest and waist pockets  
Custom anchor buttons on cuff and waist  
DS anchor pin on collar  
Dark Seas woven label branding  
100% cotton

## MACHINIST

313000135



Black

S M L XL XXL

Twill CPO style shirt jacket  
Herringbone flannel contrast lining  
Custom anchor buttons  
Chest pockets with flaps  
Welt pockets at waist  
DS anchor pin on collar  
Dark Seas woven label branding  
100% cotton

## LONGSHOREMAN

311600065



Khaki / Black

S M L XL XXL

Custom herringbone plaid flannel  
Chest pockets with flaps  
Pearl buttons  
DS anchor pin on collar  
Dark Seas woven label branding  
100% cotton







# OFF DUTY COLLECTION

## ROOFER

311100029



Antique

S M L XL XXL

Long sleeve thermal henley  
 Contrast thermal sleeves  
 Rib neck band and cuffs  
 Baseball hem  
 Overlock details  
 Printed logos on chest and back  
 Dark Seas woven label branding  
 Fair Trade certified factory  
 100% cotton

## UNION

314000009



Multi-stripe



Dark Navy

28 30 32 34 36 38

Twill painter pant  
 Classic straight leg fit  
 15 1/2" leg opening  
 Slash side pockets  
 Coin pocket  
 Back patch pockets  
 Paint brush pocket on right side  
 Key clip loop on back hip  
 Dark Seas woven label branding  
 100% cotton

## WORKING CLASS

306000015



White



Black

S M L XL XXL

Stock pocket tee  
 Standard fit  
 100% cotton



# OFF DUTY COLLECTION

## LUNCH BOX

306000016



Navy



Black

S M L XL XXL

Stock pocket tee  
Standard fit  
100% cotton

## TRABAJADORES

321000336



Red / White



Black

OS

Unstructured twill trucker hat  
Contrast mesh  
Embroidered twill patch  
Dark Seas woven label branding

## SCHEIDER

321100064



Red



Navy

OS

Shallow fit waffle knit beanie with cuff  
Embroidered shark patch on cuff  
Dark Seas woven label branding  
100% acrylic





DARK SEAS  
PACIFIC - ATLANTIC

Seas



# WOVENS / VEST

## BRICKLAYER

311600067 (with back embroidery)  
311600077 (w/out back embroidery)



Black

## AWOL

311600054



Grey / Brown

## RAMON

313100001



Green

S M L XL XXL

Long sleeve corduroy shirt  
Chain stitch embroidery on back and chest  
Convertible collar  
Scalloped hem  
Chest pockets with flaps  
Custom anchor buttons  
DS anchor pin on collar  
Dark Seas woven label branding  
100% cotton

S M L XL XXL

Custom plaid flannel with grindle yarn  
Chest pockets with flaps  
Tortoise buttons  
DS anchor pin on collar  
Dark Seas woven label branding  
100% cotton

S M L XL XXL

Nylon vest with bomber collar  
Quilted thermal lining with insulation  
Patch pockets at waist  
Embroidered twill patch on chest  
Dark Seas woven label branding  
Shell: 100% nylon  
Lining: 100% polyester  
C/O



# EARLY RISERS COMBO KIT

## ZULU

311600057



Black / Green

S M L XL XXL

Printed plaid polar fleece shirt  
Chest pockets with flaps  
Custom anchor buttons  
DS anchor pin on collar  
Dark Seas woven label branding  
100% poly

## CHATEAU

314200003



Black / Green

S M L XL XXL

Polar fleece lounge pant  
Elastic waist with drawcord  
Side seam pockets  
Back patch pockets  
Logo embroidery on hip  
Dark Seas woven label branding  
100% poly





DARK SEAS  
DIVISION



# OFFSHORE COMBO KIT

## PORT

313000132



Black

S	M	L	XL	XXL
---	---	---	----	-----

Mechanical stretch  
 Memory fabric hooded windbreaker  
 3k/3k laminate coating  
 Coil zip front and chest pocket  
 Patch pockets at waist  
 Striped drawcord hood  
 Zippered pit vents  
 Shock cord waist cinch  
 Dark Seas woven label branding  
 100% poly  
 C/O

## TACK

315000013



Black

28	30	32	34	36	38
----	----	----	----	----	----

Mechanical stretch memory fabric short  
 Zipper side pockets  
 Plyer pocket on back panel  
 Back patch pocket with velcro flap  
 Striped drawcord through waist  
 Woven label branding  
 100% poly  
 C/O



# SWEATERS / CUSTOM FLEECE

## CATALINA

312100006



Black

S M L XL XXL

Crew neck sweater with intarsia logo and artwork  
Fashioned sleeves, rib cuff and rib neck  
Dark Seas woven labels  
60% cotton / 40% acrylic

## MASON

312000042



Black

S M L XL XXL

Heavyweight 380g custom crew fleece  
Chenille and satin stitch embellishment on front  
Dark Seas woven label branding  
58% cotton / 42% poly

## CUYAHOGA

312000043



Navy

S M L XL XXL

Heavyweight 380g custom pullover hooded fleece  
Chain stitch and screenprint embellishment on back  
Satin stitch embroidery on front  
Dark Seas woven label branding  
58% cotton / 42% poly



# WOVENS

## LAMPSON

311600070



White / Navy

S M L XL XXL

Yarn dye striped long sleeve oxford  
Button down collar  
Scalloped hem  
Pearl buttons  
Embroidered shark patch on chest  
Dark Seas woven label branding  
100% cotton

## TEMPLE

311500075



Black / Navy

S M L XL XXL

Striped rayon blend camp shirt  
Chain stitch embroidery above pocket  
Convertible collar  
Straight hem  
Chest pocket  
Dish buttons  
Dark Seas woven label branding  
55% cotton / 45% rayon



# KNITS

## GLENNEYRE

311100028



Navy / Rust

S M L XL XXL

Yarn dye stripe long sleeve  
18s cotton jersey  
Rib neck band and cuffs  
Embroidered shark patch on chest  
Dark Seas woven label branding  
Fair Trade certified factory  
100% cotton

## ETON

311100030



Navy



White

S M L XL XXL

Slub jersey long sleeve pocket crew  
Rib neck band and cuffs  
Chest pocket with printed logo  
Dark Seas woven label branding  
Fair Trade certified factory  
100% organic cotton

## CONSTRUCTOR

311000066



Black / Red

S M L XL XXL

Striped short sleeve crew  
30s cotton jersey  
Rib neck band  
Embroidered shark patch on chest  
Dark Seas woven label branding  
Fair Trade certified factory  
100% cotton



# KNITS

## RAINIER

311000067



Gold / Rust

S M L XL XXL

Striped short sleeve pocket crew  
30s cotton jersey  
Rib neck band  
Chest pocket  
Dark Seas woven label branding  
Fair Trade certified factory  
100% cotton

## VISALIA

311000064



Black/White

S M L XL XXL

Striped short sleeve crew neck  
30s cotton jersey  
Rib neck band  
Bias cut neck tape  
Embroidered shark patch on chest  
Dark Seas woven label branding  
Fair Trade certified factory  
100% cotton  
C/O

## ETON

311000061



White



Black

S M L XL XXL

Short sleeve pocket crew  
18s organic cotton slub jersey  
Rib neck band  
Water based logo screen on pocket  
Dark Seas woven label branding  
Fair Trade certified factory  
100% organic cotton  
C/O







# BOARDSHORTS / TRUNKS

## MADERA

315200064



REPREVE  
SLACK



Black

## MARIGRAM

315200043



CURRENT



Blue / Black

## R&R

315000012



Black



Blue

28	30	31	32	33	34	36	38
----	----	----	----	----	----	----	----

Slack fit  
18" outseam  
4-way stretch board short  
165gsm with sublimation print  
Side seam pockets  
Scalloped hem with self fabric binding  
Contrast waistband with drawcord cinch  
Patch back pocket with flap  
Elastic shock cord key loop  
Logo print on inside waistband  
Woven patch with merrow edge  
36% poly / 34% Repreve / 24% cotton / 6% spandex  
C/O

28	30	31	32	33	34	36	38
----	----	----	----	----	----	----	----

Current fit  
4-way stretch board short  
19" outseam  
190gsm with DWR coating  
Welded inseam and hem  
No side seam  
Welt side pocket with coil zipper  
Elastic shock cord key loop  
Logo print on inside waistband  
Woven label branding on leg  
94% poly / 6% spandex  
C/O

24

S	M	L	XL	XXL
---	---	---	----	-----

Twill elastic waist trunk  
17" outseam  
Side seam pockets  
Welt back pocket  
Flat drawcord waist  
Embroidered twill patch on leg  
Woven label branding  
100% cotton  
C/O



# FLEECE

## MONIKER

301900007



Black



Ash

S M L XL XXL

Pullover heavyweight fleece  
Classic fit  
380gsm  
58% cotton / 42% poly

## CHESAPEAKE

301100101



Alpine Green



Black

S M L XL XXL

Stock pullover fleece  
Standard fit  
80% cotton / 20% poly

## UNLOCK

301100102



Navy



Gold

S M L XL XXL

Stock pullover fleece  
Standard fit  
80% cotton / 20% poly



# LONG SLEEVE TEES

## RAW POWER

309000141



Black

Navy

S M L XL XXL

Standard fit  
100% cotton

## BRICK & MORTAR

309000143



White

Black

S M L XL XXL

Standard fit  
100% cotton

## GLOSSY

309000142



Navy

White

S M L XL XXL

Standard fit  
100% cotton



# RECYCLED TEES

## MONIKER

305300011



Black



White

S M L XL XXL

Made of recycled materials  
Classic fit  
52% poly / 48% cotton

## GROTTO

305300010



Yellow



White

S M L XL XXL

Made of recycled materials  
Classic fit  
52% poly / 48% cotton

## GREENERY

305300009



White



Black

S M L XL XXL

Made of recycled materials  
Classic fit  
52% poly / 48% cotton  
C/O



# WICKING TEES

## WATER LEVEL

305000045



MOISTURE WICKING



Charcoal



Navy

S M L XL XXL

Moisture wicking  
Standard fit  
100% poly

## SWORDFISH

305000044



MOISTURE WICKING



White



Charcoal

S M L XL XXL

Moisture wicking  
Standard fit  
100% poly

## SUPERIOR

305000043



MOISTURE WICKING



Black



Silver

S M L XL XXL

Moisture wicking  
Standard fit  
100% poly  
C/O



# PIGMENT TEES

## BLUE BARRELS

305200052



Chambray



Ivory

S M L XL XXL

Soft wash garment dyed fabric  
Classic fit  
100% cotton

## 3RD POINT

305200051



White



Chalky Mint

S M L XL XXL

Soft wash garment dyed fabric  
Classic fit  
100% cotton

## PROVOKE

305200050



Graphite



Dillweed

S M L XL XXL

Soft wash garment dyed fabric  
Classic fit  
100% cotton



# PIGMENT TEES

## GO-TO-TEE

309900004



Graphite



Terracotta



White

S M L XL XXL

Soft wash garment dyed fabric  
Chest embroidery  
Classic fit  
100% cotton  
C/O

## GO-TO-TEE

305200035



White



Black



Mustard



Navy

S M L XL XXL

Soft wash garment dyed fabric  
Chest embroidery  
Classic fit  
100% cotton  
C/O



# OLD TIME POCKET TEES

## NEWPORT

304900024



Red



Black

S M L XL XXL

Chest pocket  
Select fit  
100% cotton

## LONG BRANCH

304900023



Antique White



Graphite

S M L XL XXL

Chest pocket  
Select fit  
100% cotton

## CHESAPEAKE

304900022



Dusty Navy



Antique White

S M L XL XXL

Chest pocket  
Select fit  
100% cotton

# PREMIUM TEES

## TIKI TIME

304400313



Black



Slate

S M L XL XXL

Select fit  
100% cotton

## GLOSSY

304400317



White



Navy

S M L XL XXL

Select fit  
100% cotton

## RAW POWER

304400314



Black



Navy

S M L XL XXL

Select fit  
100% cotton



# PREMIUM TEES

## UNLOCK

304400318



White



Black

S M L XL XXL

Select fit  
100% cotton

## DEFENDER

304400316



Forest



Black

S M L XL XXL

Select fit  
100% cotton

## HIDDEN TREASURES

304400315



Black



White

S M L XL XXL

Select fit  
100% cotton

# PREMIUM TEES

## DANGEROUS GOODS

304400269



Black



White

S M L XL XXL

Select fit  
100% cotton  
C/O

## MAN-AT-ARMS

304400274



White



Black

S M L XL XXL

Select fit  
100% cotton  
C/O

## BRICK & MORTAR

304400272



Coral



White



Black

S M L XL XXL

Select fit  
100% cotton  
C/O



# HEADMASTER ESSENTIALS

## HEADMASTER

304400090



Navy

Heather Grey

Black

Gold

S M L XL XXL

Premium tee  
Select fit  
100% cotton  
C/O

## HEADMASTER

309000037



Black

White

Coffee

S M L XL XXL

Stock long sleeve tee  
Select fit  
100% cotton  
C/O

## HEADMASTER

301100073



Heather Grey

Gold

Black

S M L XL XXL

Stock pullover fleece  
Standard fit  
80% cotton / 20% poly  
C/O







# HEADWEAR

## BANDOL

321000325



Golden Brown



Navy

OS

Unstructured twill 6-panel cap  
Embroidered felt patch  
Contrast striped interior taping  
Dark Seas woven label branding  
C/O

## BLUES

321000327



Black

OS

Unstructured twill snapback  
Satin stitch embroidery on front and side  
Dark Seas woven label branding  
C/O

## WARNER

321000317



Black



Gold

OS

Unstructured snapback  
Metal crossed trident badge on front  
Dark Seas woven label branding  
C/O

# HEADWEAR

## TALBERT

321000318



Camo



Black

## MURRE

321000300



Orange / Khaki



Black / White



Navy / White



Camo

## BLACK TIP

321000322



Black



Camo

OS

Twill unstructured trucker hat  
Embroidered patch with merrow edge  
Dark Seas woven label branding  
C/O

OS

Low profile 6-panel trucker hat  
Curved brim  
Embroidered logo on front  
Dark Seas woven label branding  
C/O

OS

Low profile 6-panel trucker hat  
Curved brim  
Woven patch on front  
Dark Seas woven label branding  
C/O



# HEADWEAR

## TRIDENTS SNAPBACK

321000226



Navy



Black

## JOURNEYMAN SNAPBACK

321000224



Gold



Black

## ROCKHOPPER

321000299



Black / White

OS

Unstructured snapback  
Embroidery on front  
Dark Seas woven label branding  
C/O

OS

Unstructured snapback  
Embroidered twill appliqué on front  
Dark Seas woven label branding  
C/O

OS

Low profile 6-panel trucker hat  
Curved brim  
Metal anchor badge on front  
Dark Seas woven label branding  
C/O

# HEADWEAR

## JAMMER

321000304



Maroon



Black

OS  
Low profile 6-panel snapback  
Curved brim  
Woven patch on front  
Dark Seas woven label branding  
C/O

## TRIDENTS TRUCKER

321000225



Black



Camo



Gold

OS  
Unstructured trucker hat  
Embroidery on front  
Dark Seas woven label branding  
C/O

## BOTTOMRY

321000133



Camo



Black



Dk. Navy

OS  
Twill unstructured trucker hat  
Metal anchor badge  
Dark Seas woven label branding  
C/O



# HEADWEAR

## KINTNER

321100062



Black Heather



Navy Heather

## SCHEIDER

321100064



Tobacco



Black

## CRUISER

321100037



Gold



Dk. Navy



Black

OS

Regular fit marled yarn beanie with cuff  
Woven label on cuff  
Dark Seas woven label branding  
100% acrylic  
C/O

OS

Shallow fit waffle knit beanie with cuff  
Embroidered shark patch on cuff  
Dark Seas woven label branding  
100% acrylic  
C/O

OS

Regular fit beanie with cuff  
Embroidery on cuff  
Dark Seas woven label branding  
100% acrylic  
C/O





## ACCESSORIES

### HOODED TOWEL

313300002



Black

OS

Oversized pullover hooded towel  
Embroidered logos  
Quick-drying  
Fixed hood  
Side slits to hem  
100% cotton  
C/O



# SOCKS

## PISMO

322300017



Red



Grey

## CARMEL

322300018



Mineral Blue



Black



White

## WORKUP

322300012



Black



White

OS

Crew sock  
Jacquard logo and stripe  
Padded footbed  
Logo screen print on bottom  
85% cotton / 15% spandex  
C/O

OS

Crew sock  
Jacquard logo and stripe  
Padded footbed  
Logo screen print on bottom  
85% cotton / 15% spandex  
C/O

OS

Crew sock  
Jacquard logo and stripe  
Padded footbed  
Logo screen print on bottom  
85% cotton / 15% spandex  
C/O

# ACCESSORIES

## STICKER PACK VI

322100025



Assorted

OS

Assorted graphics  
10 pack

## STICKER PACK - FISHING SERIES

322100026



Assorted

OS

Assorted graphics  
6 pack



# ACCESSORIES

## NAVIGATOR STICKER

322100027



Assorted

OS

24 Pack  
4" vinyl sticker

## LARGE / SMALL HEADMASTER STICKER

322100030 / 322100031 / 322100028 / 322100029



Black



White

OS

Die cut vinyl decal  
Large: 5" x 8"  
Small: 3"x 5"

## ENAMEL PINS

321600011 / 321600012 / 321600004



Assorted



Assorted



Antique Brass

OS

Enamel fill lapel pin  
Assorted finishes

# ACCESSORIES

## DANGEROUS GOODS AIR FRESHENER

322600008



Assorted



Dangerous Goods  
Coconut scent

## PARA-DICE AIR FRESHENER

322600007



Assorted



Paradise  
Wild Cherry Scent

## SAILFISH AIR FRESHENER

322600006



Assorted



Sailfish  
Nautical Breeze Scent



P.O.P.

SHARK JAW P.O.P.

801000025



Black

OS

Double sided printed aluminum sign  
Hand stained wooden base

HEADMASTER PENNANT P.O.P.

801000019



Navy

S M L XL XXL

Double sided felt pennant  
Heavy duty metal stem and base plate

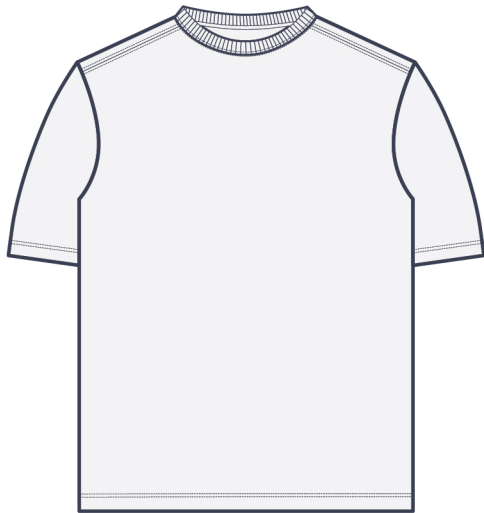
# TEE SHIRT FIT GUIDE

---

CLASSIC



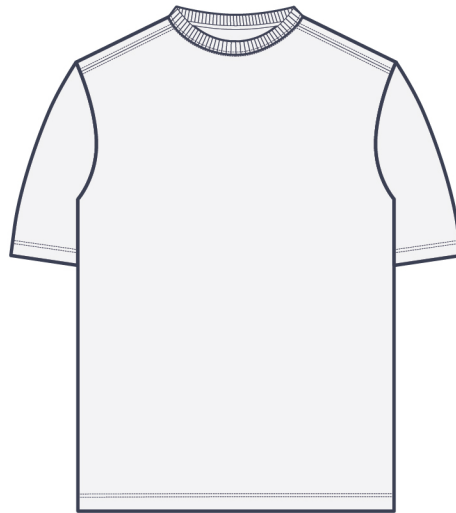
FIT:  
Loose



STANDARD



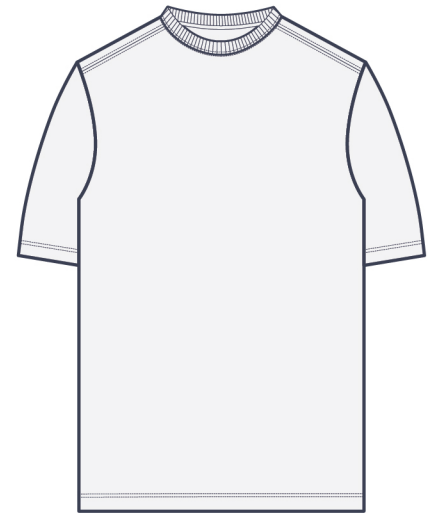
FIT:  
Relaxed



SELECT



FIT:  
Slimmer





# BOARDSHORT FIT GUIDE

## FLOOD FIT

**17" outseam**  
Retro styling

**CONSTRUCTION:**

2-way stretch  
160gsm  
51% cotton / 45% poly / 4% elastane



## SLACK FIT

**18" outseam**  
Scalloped hem

**CONSTRUCTION:**

4-way stretch  
160gsm  
70% poly / 20% cotton / 10% spandex

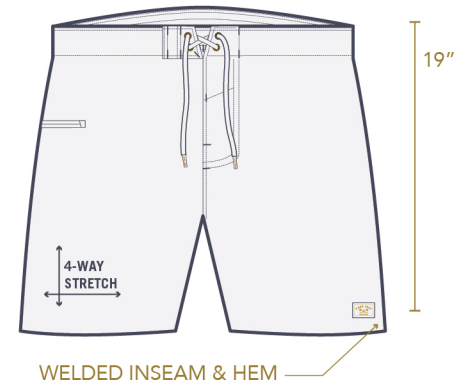


## CURRENT FIT

**19" outseam**  
Modern fit / Timeless silhouette

**CONSTRUCTION:**

4-way stretch  
190gsm with DWR coating  
90% poly / 10% elastane



## SALES REPRESENTATIVES

### California

*Bob Tassin*

Phone: 949.573.3958

Email: [bob@darkseas](mailto:bob@darkseas)

### Texas, Arizona

*Curtis Wheeler*

Phone: 832.776.7116

Email: [curtiswheeler91@yahoo.com](mailto:curtiswheeler91@yahoo.com)

### Northeast

*Joe Comba*

Phone: 914.393.9897

Email: [joe@darkseas.com](mailto:joe@darkseas.com)

### Southeast

*Andrew Mercier*

Phone: 443.614.4422

Email: [andrew@darkseas.com](mailto:andrew@darkseas.com)

### Domestic and International Sales Inquiries

*Chris Broders*

Phone: 949.596.8401 Ext. 238

Email: [chris@darkseas.com](mailto:chris@darkseas.com)

### Toll Free

888.215.3813

### OR, WA, ID, MT, UT, CO, WY, NV,

*Burl Darden*

Phone: 541.513.1209

Email: [burl@darkseas.com](mailto:burl@darkseas.com)

*Levi Campbell*

Phone: 360.510.6811

Email: [levi@darkseas.com](mailto:levi@darkseas.com)

### Midwest

*Laura Karels*

Phone: 612.743.7969

Email: [laura\\_karels@yahoo.com](mailto:laura_karels@yahoo.com)

### Florida

*Craig Frick*

Phone: 772.985.9889

Email: [craigfrick.fl@gmail.com](mailto:craigfrick.fl@gmail.com)

## PHOTOGRAPHERS

*Carlos Marquina*

*Gunner Hughes*

*Jeff Jones*

*Guy Macindo*

