



AIRHOLE

FALL / WINTER  
2018 - 2019







# LET'S GO TO NEW PLACES

*We are no longer defined by what we do, but rather why we do it. Skiers surf, surfers sail, snowboarders fish – whatever, we are all out for the same cause: adventure.*

*Adventure can mean different things to different people. To us, it's very simple; adventure is pushing beyond your normal. It's being a little irresponsible. It's not knowing what might happen. It's doing something that becomes a good story.*

*We are all collectively driven by these strange, absurd adventures... and these adventures are what make our products necessary.*

*Let's go to new places.*

**#Airhole #OutThere**









AIRHOLE IS  
RENOWNED FOR  
THE SIMPLEST  
TECHNOLOGICAL  
INNOVATION IN  
FACE PROTECTION –  
**THE AIRHOLE.**

*Airhole protects the wearer from all elements and allows free breathing without condensation through the single breath hole.*

*Airhole was created in the backcountry of Whistler and has grown to become a global leader in action sports face protection.*

*Airhole makes the ultimate face protection - stay out there longer.*











# TECHNICAL INNOVATION

---

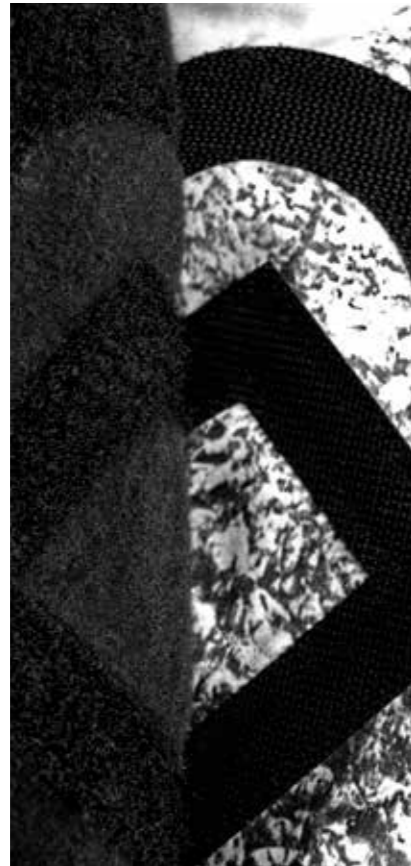
*or*  
**THE AIRHOLE**

---

*The Airhole is standard on all of our masks and is designed to allow breath to escape freely, avoiding the build up of condensation to keep you dry, warm. Stay out there longer.*







02  
**SIGNATURE DESIGN  
 VELCRO**

*Airhole's Signature Design Velcro utilizes a softer, easier-to-use logo shaped velcro which is applied to the masks. This gives great coverage and makes adjustment incredibly easy. The new velcro allows the hooks only to catch the loops and avoids hair or anything else that may be caught.*



03  
**UPF PROTECTION**

*All Airhole masks have a minimum UPF of 50 which means they block 98% of harmful UV rays. This helps prevent premature aging and the risk of damage to the wearers skin. Unlike many sunblock products, Airhole Facemasks block both UVA and UVB radiation.*



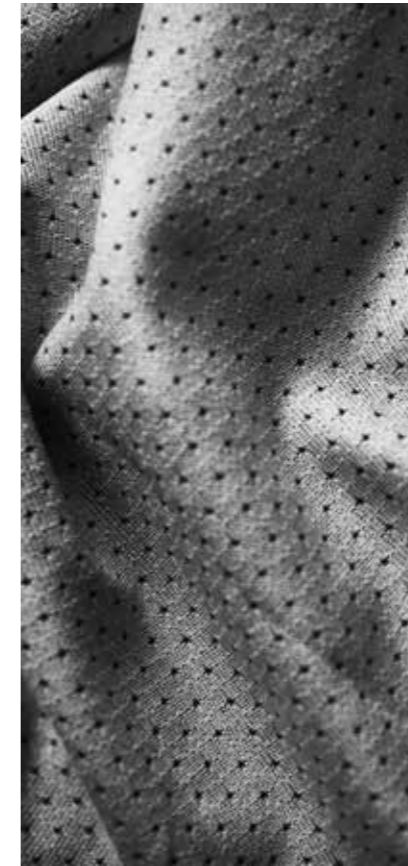
04  
**RECYCLED FABRIC**

*Airhole uses yarn in several styles that has been made from recycled PET plastic bottles that are chipped, melted and extruded into a fine polyester yarn. This reduces the impact on the environment without sacrificing performance or quality.*



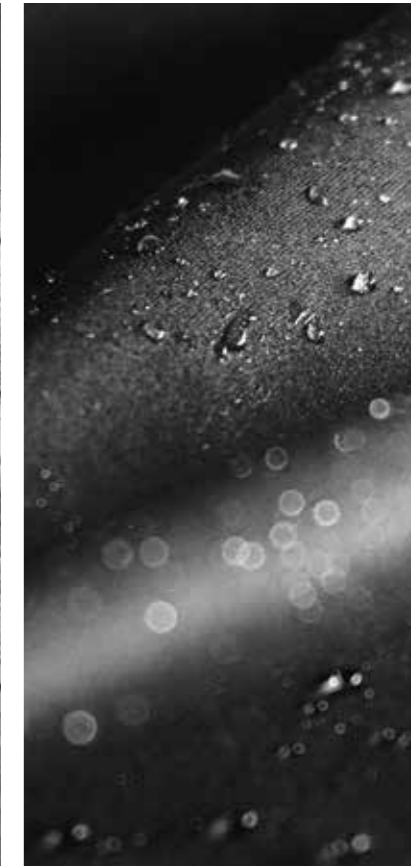
05  
**HEAT MANAGEMENT**

*Grid fleece, fine yarn polyesters, and merino fibers are all part of our heat management program. When the wearer is active, moisture is wicked from the skin, escapes to the surface of the fabric and evaporates.*



06  
**QUICK DRY**

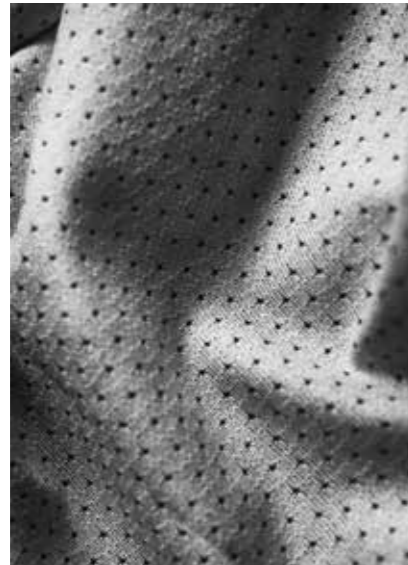
*Hydrophobic yarn is used to eliminate fabric dampness. Moisture is spread across the surface of the fabric where it is quickly air dried.*



07  
**WATER RESISTANCE**

*Many fabrics are treated with water resistant coatings to keep the elements at bay all day long. DWR is a durable fabric coating which gives Airhole masks water repellent properties, preventing the face and outer layer of the fabric from becoming saturated with water.*

TECHNICAL FEATURES



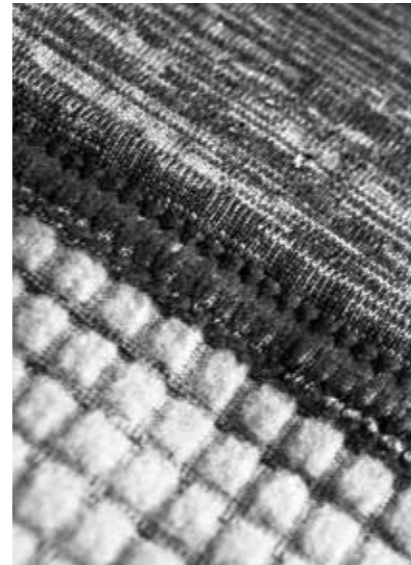
01  
**DRYLITE**

- + MOISTURE WICKING
- + QUICK DRY
- + PERFORATED



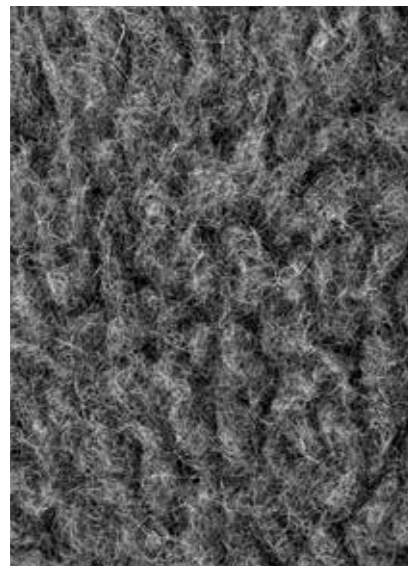
02  
**DRYTECH**

- + MOISTURE WICKING
- + BRUSHED FINE KNIT MICROFIBER
- + DURABLE WATER RESISTANT (DWR) COATING



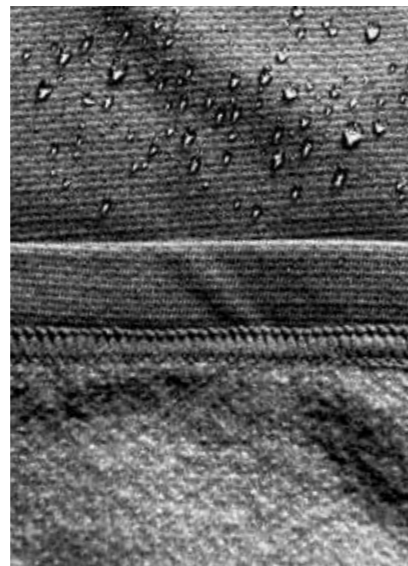
03  
**WAFFLEKNIT**

- + HEAT MANAGEMENT
- + BRUSHED GRID FLEECE
- + DURABLE WATER RESISTANT (DWR) COATING



04  
**MERINO**

- + MOISTURE WICKING
- + STAYS WARM WHEN WET
- + NATURAL + BIODEGRADABLE FABRIC
- + ODOR FREE



05  
**FEATHERLITE**

- + MOISTURE WICKING
- + BRUSHED SEAMLESS KNIT FABRIC
- + SUPER STRETCHY FABRIC



06  
**POLAR**

- + HYDROPHOBIC
- + STAYS WARM WHEN WET
- + FLAT FINISHED OUTER W/ BRUSHED INNER
- + DURABLE WATER RESISTANT (DWR) COATING



07  
**MICROFLEECE**

- + HYDROPHOBIC
- + STAYS WARM WHEN WET
- + DOUBLE LAYER BRUSHED FABRIC
- + DURABLE WATER RESISTANT (DWR) COATING



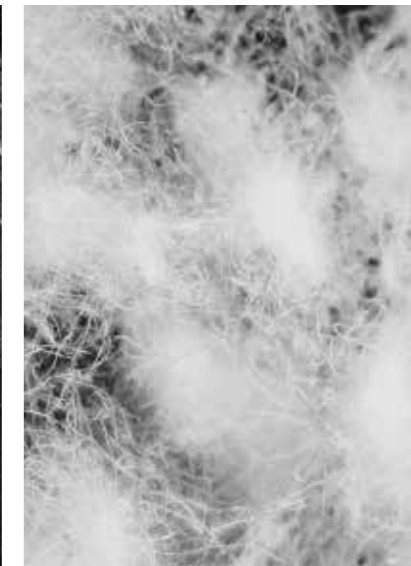
08  
**2 LAYER**

- + 10,000mm MEMBRANE
- + RECYCLED POLYESTER
- + SEWN TOGETHER W/ A BRUSHED POLAR LINING
- + DURABLE WATER RESISTANT (DWR) COATING



09  
**3 LAYER**

- + 20,000mm MEMBRANE
- + RECYCLED POLYESTER
- + BRUSHED BACKING
- + DURABLE WATER RESISTANT (DWR) COATING



10  
**INSULATED**

- + DUCK DOWN FILL



# AIRTUBES

DRYLITE  
DRYTECH  
WAFFLEKNIT  
MERINO  
FEATHERLITE  
POLAR  
MICROFLEECE  
2 LAYER  
3 LAYER  
INSULATED







## SPECIFICATIONS

**Laser Welded Airhole Mouth Piece**  
 Trou d'aération signature Airhole Welded coupé au laser  
 オリジナルAirholeマウスピース (レーザー加工)  
 Airhole Lasergeschweißtes Mundstück

**UPF 50 for 98% Sun Protection**  
 UPF 50 pour 95% de protection solaire  
 UPF 50 の日焼け予防効果  
 98% Sonnenblocker bearbeitet mit UPF 50

**Perforated Drylite Polyester + Lycra**  
 Polyester +Lycra Drylite perforé  
 穴あけ加工Dryliteポリエステル+ライクラ  
 Drylite Polyester + Lycra, perforiert

## BENEFITS

**Long Length for Multipurpose**  
 Grande longueur pour des usages multiples  
 多用途向けの長尺  
 Lange Form für multifunktionalen Einsatz

**Moisture Wicking**  
 évacuation de l'humidité  
 速乾  
 Feuchtigkeitsabführend

**Quick Dry**  
 Séchage ultra rapide  
 速乾  
 Schnell Trocknend



**ANGLER**  
 AHAILD-ANGL



**BADLANDS**  
 AHAILD-BAD



**SURVIVAL**  
 AHAILD-SRVL



**SOUVENIER**  
 AHAILD-SVNR



**TROPICS**  
 AHAILD-TROP



**WASHED BLACK**  
 AHAILD-WBLK



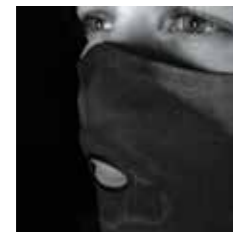
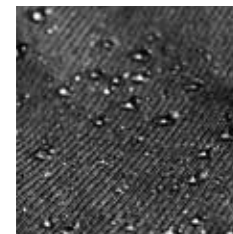
**WASHED DYE**  
 AHAILD-WSDY



**WASHED GREY**  
 AHAILD-WSGY







## SPECIFICATIONS

**Laser Welded Airhole Mouth Piece**  
 Trou d'aération signature Airhole Welded coupé au laser  
 オリジナルAirholeマウスピース (レーザー加工)  
 Airhole Lasergeschweißtes Mundstück

**DWR Coated for Water Resistance**  
 Revêtement DWR pour Résistant à l'eau  
 DWR撥水加工済み  
 Wasserabweisende DWR Imprägnierung

**Fine Yarn Polyester + Spandex Drytech**  
 Fils fins Polyester + Spandex Drytech  
 ファイン糸ポリエステル + スパンデックスDrytech  
 Feines Garn Polyester + Spandex Drytech

## BENEFITS

**Breathe Free with Airhole**  
 Respirez gratuit avec Airhole  
 Airhole を通し、自然な呼吸が可能  
 Freies Atmen mit Airhole

**Water Resistant**  
 Résistant à l'eau  
 耐水  
 Wasserfest

**Brushed Inside for Warmth & Comfort**  
 Intérieur brossé pour plus de chaleur et de confort  
 暖かさと快適さのために内部をブラシ  
 Gebürstet für Wärme & Komfort



**BLACK**  
 AHA2DT-BLK



**GREY**  
 AHA2DT-GREY



**ARMY**  
 AHA2DT-ARMY



**DUSTY PINK**  
 AHA2DT-DSPK



**MERLOT**  
 AHA2DT-MRLT



**PLUM**  
 AHA2DT-PLUM







**MIDNIGHT FLORAL**  
AHA2DT-MFLR



**ELECTRIC DYE**  
AHA2DT-ELDY



**RAIN CAMO**  
AHA2DT-RNCM



**PALMS**  
AHA2DT-PALM



**BLACK PAISLEY**  
AHA2DT-BKPS



**RED BUFFALO**  
AHA2DT-RDBF



**OUTDOORS**  
AHA2DT-OTDR



**STORM**  
AHA2DT-STRM



**SHARK**  
AHA2DT-SHRK



**SKULL**  
AHA2DT-SKL



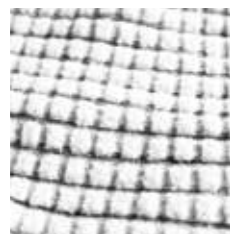
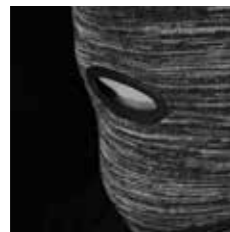
**SNOW TIGER**  
AHA2DT-SNTG



**SASQUATCH**  
AHA2DT-SASQ







## SPECIFICATIONS

### Silicone Injected Airhole Mouth Piece

Trou d'aération signature Airhole en silicone injecté  
オリジナルAirholeマウスピース (シリコン注入加工)  
Airhole Mundstück aus eingespritztem Silikon

### DWR Coated for Water Resistance

Revêtement DWR pour Résistant à l'eau  
DWR撥水加工済み  
Wasserabweisende DWR Imprägnierung

### Polyester + Lycra Waffleknit

Polyester + Lycra tricoté en point gaufre  
ポリエステル+ライクラ ワッフルニット  
Polyester + Lycra Waffelmuster

## BENEFITS

### Breathe Free with Airhole

Respirez gratuitement avec Airhole  
Airhole を通し、自然な呼吸が可能  
Freies Atmen mit Airhole

### Heat Management

Gestion de la chaleur  
温度保持能力  
Wärmemanagement

### Water Resistant

Résistant à l'eau  
耐水  
Wasserfest



BLACK  
AHA2WK-BLK



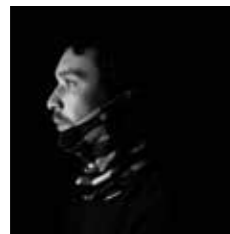
TECH ARMY  
AHA2WK-TCAR



TECH BLUE  
AHA2WK-TCBL



TECH GREY  
AHA2WK-TCGY



## SPECIFICATIONS

### Embroidered Airhole Mouth Piece

Trou d'aération signature brodée Airhole Embroidered  
オリジナルAirholeマウスピース (刺しゅう入り)  
Airhole Besticktes Mundstück

### Natural Fibre Insulator + Weather Resistor

Isolation de fibré naturel et résistant aux intempéries  
天然繊維を使用したインサレーション/撥水加工済み  
Naturfaser Insolation und Wetter abweisend

### 95% Merino Wool + 5% Spandex

95% laine mérinos + 5% spandex  
95%メリノウール + 5% スパンデックス  
95% Merino Wolle + 5% Elasthan

## BENEFITS

### No Odor

Aucune odeur  
無臭  
Geruchlos

### Stays Warm When Wet

Restez au chaud même quand il est mouillé  
ウェザープロテクション  
Bleibt auch bei Nässe warm

### Renewable and Biodegradable

Renouvelable et biodégradable  
再生可能及び生分解性の素材  
Erneuerbar und biologisch abbaubar



BLACK  
AHA2MR-BLK



HEATHER GREY  
AHA2MR-HRGY



WASHED MARINE  
AHA2MR-WSMR



DUST  
AHA2MR-DUST



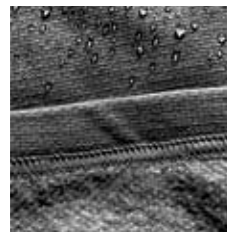
BURGUNDY PAISLEY  
AHA2MR-BRPS



WHITE BUFFALO  
AHA2MR-WTBF







## SPECIFICATIONS

### Silicone Injected Airhole Mouth Piece

Trou d'aération signature Airhole en silicone injecté  
オリジナルAirholeマウスピース (シリコン注入加工)  
Airhole Mundstück aus eingespritztem Silikon

### Seamless Knitting for Breathability

Tricot sans couture pour faciliter la respiration  
精細な編み目で自然な呼吸が可能  
Nahtloses Strickverfahren für Atmungsaktivität

### Nylon + Polyester + Spandex Featherlite

Nylon 55% Polyester 40% Spandex 5%  
55%ナイロン 40%ポリエステル 5%スパンデックス  
55% Nylon 40% Polyester 5% Elasthan

## BENEFITS

### Brushed Inside for Warmth & Comfort

Intérieur brossé pour plus de chaleur et de confort  
暖かさと快適さのために内部をブラシ  
Gebürstet für Wärme & Komfort

### Moisture Wicking

évacuation de l'humidité  
速乾  
Feuchtigkeitsabführend

### Quick Dry

Séchage ultra rapide  
速乾  
Schnell Trocknend



BLACK  
AHA2FT-BLK



HYPER BLUE  
AHA2FT-HYBL



HYPER GREY  
AHA2FT-HYGY



HYPER ORANGE  
AHA2FT-HYOR

## ADDITIONAL NOTES

### Fabric Stretches for One Size Fits Most

Taille unique  
フリーサイズ  
Eine Größe passt meistens



## SPECIFICATIONS

### Silicone Injected Airhole Mouth Piece

Trou d'aération signature Airhole en silicone injecté  
オリジナルAirholeマウスピース (シリコン注入加工)  
Airhole Mundstück aus eingespritztem Silikon

### DWR Coated for Water Resistance

Revêtement DWR pour Résistant à l'eau  
DWR撥水加工済み  
Wasserabweisende DWR Imprägnierung

### Polyester + Spandex Polar Fleece

Polyester + Spandex Molletoné Polar  
ポリエステル + スパンデックステックフリース  
Polyester + Spandex Polar Fleece

## BENEFITS

### Breathe Free with Airhole

Respirez gratuit avec Airhole  
Airhole を通し、自然な呼吸が可能  
Freies Atmen mit Airhole

### Stays Warm When Wet

Restez au chaud même quand il est mouillé  
ウェザープロテクション  
Bleibt auch bei Nässe warm

### Brushed Inside for Warmth & Comfort

Intérieur brossé pour plus de chaleur et de confort  
暖かさ&快適さのために内部をブラシ  
Gebürstet für Wärme & Komfort



BLACK  
AHA2PL-BLK



HEATHER CHARCOAL  
AHA2PL-HRCH



HEATHER GREY  
AHA2PL-HRGY



HEATHER MARINE  
AHA2PL-HRMR



HEATHER PINK  
AHA2PL-HRPK



HEATHER WHITE  
AHA2PL-HRWT





**LOGO**  
AHA2PL-LOGO



**POLAR BEARS**  
AHA2PL-PLBR



**RESORT**  
AHA2PL-RSRT



**SPLATTER**  
AHA2PL-SPLT



**WOODLAND CAMO**  
AHA2PL-WDCM



**BORO**  
AHA2PL-BORO



**NAVAJO**  
AHA2PL-NVJO

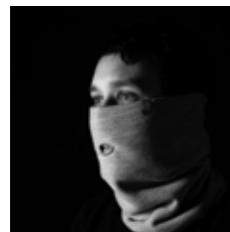


**NIGHT ROSE**  
AHA2PL-NTRS



**HUNTER**  
AHA2PL-HNTR





## SPECIFICATIONS

### Embroidered Airhole Mouth Piece

Trou d'aération signature brodée Airhole Embroidered  
オリジナルAirholeマウスピース (刺しゅう入り)  
Airhole Besticktes Mundstück

### Hydrophobic Fabric

Tissu hydrophobe  
疎水性布地  
Wasserabweisendes Material

### DWR + Polyester + Spandex Microfleece

Micro-Fibre Polyester + Spandex  
マイクロファイバーポリエステル + スパンデックス  
Polyester + Spandex Microfleece

## BENEFITS

### Breathe Free with Airhole

Respirez gratuit avec Airhole  
Airhole を通し、自然な呼吸が可能  
Freies Atmen mit Airhole

### Stays Warm When Wet

Restez au chaud même quand il est mouillé  
ウェザープロテクション  
Bleibt auch bei Nässe warm

### Comfortable & Protective

Confortable et protecteur  
快適で安全  
Bequem & Schützend



BLACK  
AHAIMF-BLK



HEATHER BLACK  
AHAIMF-HRBK



HEATHER GREY  
AHAIMF-HRGY



HEATHER PINK  
AHAIMF-HRPK



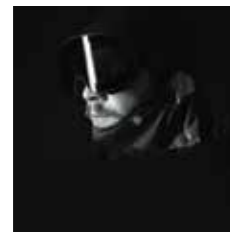
HEATHER NAVY  
AHAIMF-HRNV



HEATHER GREEN  
AHAIMF-HRGN







## SPECIFICATIONS

### Silicone Injected Airhole Mouth Piece

Trou d'aération signature Airhole en silicone injecté  
オリジナルAirholeマウスピース (シリコン注入加工)  
Airhole Mundstück aus eingespritztem Silikon

### Signature Design Velcro

Signature design en Velcro  
シグネチャーデザインベルクロ  
Einzigartiges Klettverschluss-Design

### 2 Layer DWR Coated Recycled Polyester

Revêtement DWR 2 Couches - Polyester recyclé  
DWR加工が施された2層のリサイクルポリエステルを使用  
2 Layer DWR Coated Wiederverwertbare Polyester

## BENEFITS

### Simple Elastic + Velcro Adjustability

Ajustable par la structure élastique + Velcro  
シンプルな弾性+ベルクロで調整可能  
Einfachheit, Elastizität + Verstellbarkeit via Klettverschluss

### 10,000mm Water + Wind Resistant Outer

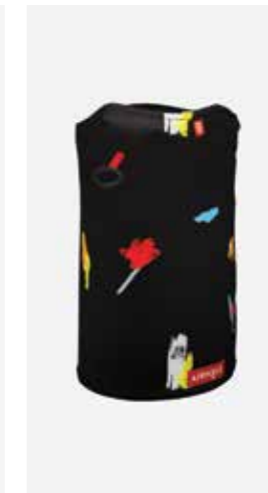
Résistant aux vents extérieurs + résistant à 10 000 mm d'eau  
10m防水+防風のアウター  
Wasserbeständig bis 10.000 mm und windbeständige Oberfläche

### Brushed Fleece Lining for Warmth

Doubleure polaire brossée pour plus de chaleur  
密植フリースライニングで温かく  
Angeraute Fleece-Innenseite für mehr Wärme



BLACK  
AHA32L-BLK



DECO  
AHA32L-DECO



DIP DYE  
AHA32L-DPDY



GREY BONES  
AHA32L-GYBN



TROPICS  
AHA32L-TROP



ANGLER  
AHA32L-ANGR



## SPECIFICATIONS

### Silicone Injected Airhole Mouth Piece

Trou d'aération signature Airhole en silicone injecté  
オリジナルAirholeマウスピース (シリコン注入加工)  
Airhole Mundstück aus eingespritztem Silikon

### DWR Coated for Water Resistance

Revêtement DWR pour Résistant à l'eau  
DWR撥水加工済み  
Wasserabweisende DWR Imprägnierung

### 3 Layer DWR Coated Recycled Polyester

Revêtement DWR 3 Couches - Polyester recyclé  
DWR加工が施された3層のリサイクルポリエステルを使用  
3 Layer DWR Coated Wiederverwertbare Polyester

## BENEFITS

### Stretch Drytech Back for Comfort

Revêtement du dos avec technologie Stretch Drytech pour plus confort  
伸縮性Drytechのバックで快適  
Dehnbare Drytech Rückseite für mehr Komfort

### 20,000mm Water + Wind Resistant

20,000mm Résistant à l'eau et le vent  
20,000mm の防水と防風  
20,000mm Wassersäule und Wind abweisend

### Ergonomic Shape

Forme ergonomique  
人間工学に基づいた形状  
Ergonomische Form



**BLACK**  
AHA43L-BLK



**MAGENTA**  
AHA43L-MGNT



**PACIFIC BLUE**  
AHA43L-PCBL



**HEATHER GREY**  
AHA43L-HGRY



**TOPOGRAPHIC BLACK**  
AHA43L-TPBK



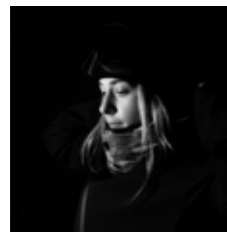




**BLACK**  
AHA3IN-BLK

**LEOPARD**  
AHA3IN-LPRD

**WASHED GREY**  
AHA3IN-WSGY



## SPECIFICATIONS

### Silicone Injected Airhole Mouth Piece

Trou d'aération signature Airhole en silicone injecté  
オリジナルAirholeマウスピース (シリコン注入加工)  
Airhole Mundstück aus eingespritztem Silikon

### DWR Coated for Water Resistance

Revêtement DWR pour Résistant à l'eau  
DWR撥水加工済み  
Wasserabweisende DWR Imprägnierung

### Recycled Polyester with Duck Down

Polyester recyclé à 100% avec Duvet d'oies  
100%リサイクルポリエステル&羽毛  
100% Recyceltem Polyester mit Ente unten



## BENEFITS

### Elastic Binding Holds Shape

La structure élastique maintient la forme  
弾性バインディングが形状を保持  
Elastisches Band für die Beibehaltung der Form

### 10,000mm Water + Wind Resistant Outer

Résistant aux vents extérieurs + résistant à 10 000 mm d'eau  
10m防水+防風のアウトター  
Wasserbeständig bis 10.000 mm und windbeständige Oberfläche

### Brushed Tricot Face Lining

Doublure au visage en tricot brossé  
密植トリコットフェース裏地  
Angerautes Trikotfutter





# FACEMASKS

POLAR  
2 LAYER  
3 LAYER







**BLACK**  
AHS3PL-BLK



**HEATHER CHARCOAL**  
AHS3PL-HRCH



**HEATHER GREY**  
AHS3PL-HRGY



**HEATHER MARINE**  
AHS3PL-HRMR



**HEATHER PINK**  
AHS3PL-HRPK



**HEATHER WHITE**  
AHS3PL-HRWT



**SURVIVAL**  
AHS3PL-SRVL



**TROPICS**  
AHS3PL-TROP



## SPECIFICATIONS

**Silicone Injected Airhole Mouth Piece**  
Trou d'aération signature Airhole en silicone injecté  
オリジナルAirholeマウスピース (シリコン注入加工)  
Airhole Mundstück aus eingespritztem Silikon

**Signature Design Velcro**  
Signature design en Velcro  
シグネチャーデザインベルクロ  
Einzigartiges Klettverschluss-Design

**Polyester + Spandex Polar Fleece**  
Polyester + Spandex Molletoné Polar  
ポリエステル + スパンデックスステックフリース  
Polyester + Spandex Polar Fleece

## BENEFITS

**Ergonomic Bandana Shape for Easy Wear**  
Forme ergonomique de bandana pour un usage facile  
人間工学に基づくバンダナ形状で手軽に着用  
Ergonomische Bandana-Form für einfaches Tragen

**DWR Coated for Water Resistance**  
Revêtement DWR pour Résistant à l'eau  
DWR撥水加工済み  
Wasserabweisende DWR Imprägnierung

**Stays Warm When Wet**  
Restez au chaud même quand il est mouillé  
ウェザープロテクション  
Bleibt auch bei Nässe warm





## SPECIFICATIONS

**Silicone Injected Airhole Mouth Piece**  
 Trou d'aération signature Airhole en silicone injecté  
 オリジナルAirholeマウスピース (シリコン注入加工)  
 Airhole Mundstück aus eingespritztem Silikon

**Signature Design Velcro**  
 Signature design en Velcro  
 シグネチャーデザインベルクロ  
 Einzigartiges Klettverschluss-Design

**2 Layer DWR Coated Recycled Polyester**  
 Revêtement DWR 2 Couches - Polyester recyclé  
 DWR加工が施された2層のリサイクルポリエステルを使用  
 2 Layer DWR Coated Wiederverwertbare Polyester

## BENEFITS

**Patented Design**  
 Conception brevetée  
 特許設計  
 Patentiertes Design

**10,000mm Water + Wind Resistant Outer**  
 Résistant aux vents extérieurs + résistant à 10 000 mm d'eau  
 10m防水+防風のアウター  
 Wasserbeständig bis 10.000 mm und windbeständige Oberfläche

**Brushed Fleece Lining for Warmth**  
 Doublure polaire brossée pour plus de chaleur  
 密植フリースライニングで温かく  
 Angeraute Fleece-Innenseite für mehr Wärme



**BLACK**  
 AHS12L-BLK



**HEATHER GREY**  
 AHS12L-HRGY



**ESTUARY**  
 AHS12L-ESTY



**WASHED MARINE**  
 AHS12L-MRWS



**PINK WASH**  
 AHS12L-PKWS



**DIP DYE**  
 AHS12L-DPDY



**SPLATTER**  
 AHS12L-SPLT



**WASHED DYE**  
 AHS12L-WSDY







**STORM**  
AHS12L-STRM



**DUST**  
AHS12L-DUST



**HORIZON**  
AHS12L-HRZN



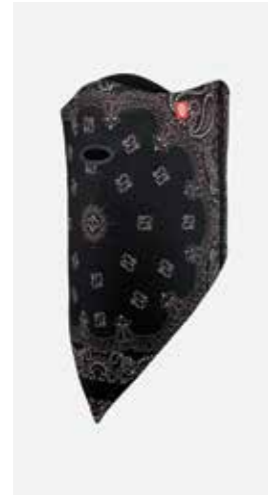
**DECO**  
AHS12L-DECO



**PALMS**  
AHS12L-PALM



**LEOPARD**  
AHS12L-LPRD



**BLACK PAISLEY**  
AHS12L-BKPS



**BORO**  
AHS12L-BORO



**WHITE BUFFALO**  
AHS12L-WTBF



**ELECTRIC DYE**  
AHS12L-ELDY



**WHITE ROSE**  
AHS12L-WTRS



**MIDNIGHT FLORAL**  
AHS12L-MFLR



**RAIN CAMO**  
AHS12L-RNCM



**WOODLAND CAMO**  
AHS12L-WDCM



**ZEBRA**  
AHS12L-ZBRA



**LOGO**  
AHS12L-LOGO

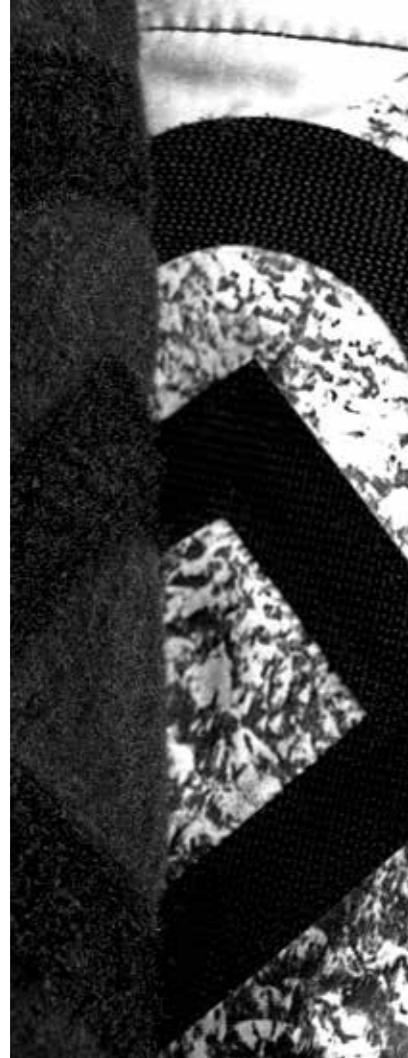


**BONES**  
AHS12L-BONE



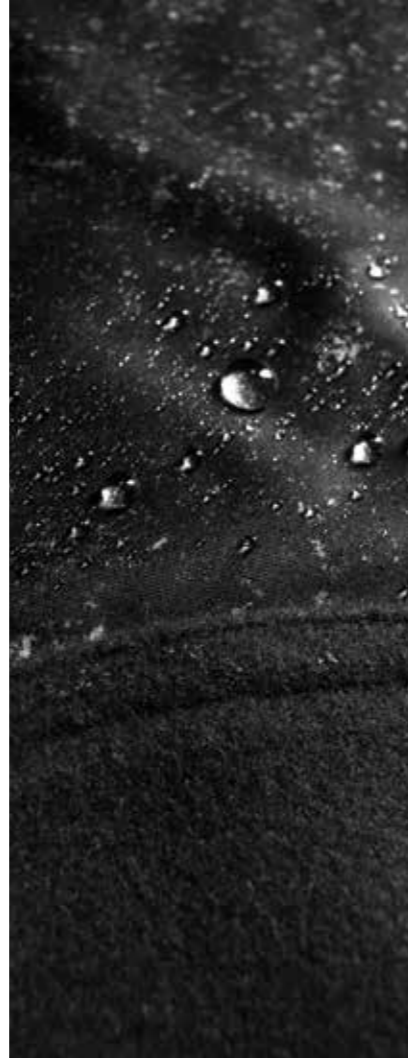
**NORDIC**  
AHS12L-NRDC





01  
**SIGNATURE DESIGN  
VELCRO**

Airhole's Signature Design Velcro utilizes a softer, easier-to-use logo shaped velcro which is applied to the masks. This gives great coverage and makes adjustment incredibly easy. The new velcro allows the hooks only to catch the loops and avoids hair or anything else that may be caught.



02  
**10,000mm WATER RESITANT**

The Standard Facemask fabric is treated with DWR, a durable fabric coating which gives Airhole masks water repellent properties, preventing the face and outer layer of the fabric from becoming saturated with water. Matched with a 10,000mm membrane and brushed fleece lining, the Standard Facemask is the ultimate.



03  
**RECYCLED FABRIC**

The Standard Facemask uses yarn for the outer fabric that has been made from recycled PET plastic bottles that are chipped, melted and extruded into a fine polyester yarn. This reduces the impact on the environment without sacrificing performance or quality.



**HUNTER**  
AHSI2L-HNTR



**NAVAJO**  
AHSI2L-NVJO



**OUTDOOR**  
AHSI2L-OTDR



**RED BUFFALO**  
AHSI2L-RDBF



**PENGUINS**  
AHSI2L-PEN



**DOGS**  
AHSI2L-DOGS



**POLAR BEARS**  
AHSI2L-PLBR



**MEOW**  
AHSI2L-MEOW







**AVIATOR**  
AHSI2L-AVTR



**BEAR**  
AHSI2L-BEAR



**YETI**  
AHSI2L-YETI



**CANADA**  
AHSI2L-CAN



**USA**  
AHSI2L-USA



**COLORADO**  
AHSI2L-COL



**SHARK**  
AHSI2L-SHRK



**SKULL**  
AHSI2L-SKL



**SNOW TIGER**  
AHSI2L-SNTG



**SOUVENIR**  
AHSI2L-SVNR



**RESORT**  
AHSI2L-RSRT



**BLACKTUSK**  
AHSI2L-BKTS



**ANGLER**  
AHSI2L-ANGL



**SQUADRON**  
AHSI2L-SQDN



**SCALES**  
AHSI2L-SCLE



**MATTERHORN**  
AHSI2L-MTHR



**SNOW GHOSTS**  
AHSI2L-SNGT



**CHAMONIX**  
AHSI2L-CHAM





## SPECIFICATIONS

**Silicone Injected Airhole Mouth Piece**  
 Trou d'aération signature Airhole en silicone injecté  
 オリジナルAirholeマウスピース (シリコン注入加工)  
 Airhole Mundstück aus eingespritztem Silikon

**Signature Design Velcro**  
 Signature design en Velcro  
 シグネチャーデザインベルクロ  
 Einzigartiges Klettverschluss-Design

**3 Layer DWR Coated Recycled Polyester**  
 Revêtement DWR 3 Couches - Polyester recyclé  
 DWR加工が施された3層のリサイクルポリエステルを使用  
 3 Layer DWR Coated Wiederverwertbare Polyester

## BENEFITS

**Patented Design**  
 Conception brevetée  
 特許設計  
 Patentiertes Design

**20,000mm Water + Wind Resistant**  
 20,000mm Résistant à l'eau et le vent  
 20,000mm の防水と防風  
 20,000mm Wassersäule und Wind abweisend

**Brushed 3rd Layer for Comfort**  
 3 couches brossées pour plus de confort  
 第3の密植レイヤーを追加し更に快適  
 Angeraute 3. Schicht für mehr Komfort



**BLACK**  
 AHS23L-BLK



**MAGENTA**  
 AHS23L-MGNT



**PACIFIC BLUE**  
 AHS23L-PCBL



**HEATHER GREY**  
 AHS23L-HGRY



**TOPOGRAPHIC BLACK**  
 AHS23L-TPBK





# BALACLAVAS

DRYLITE  
DRYTECH  
WAFFLEKNIT  
MERINO  
FEATHERLITE  
POLAR  
MICROFLEECE + DRYTECH  
2 LAYER  
3 LAYER  
INSULATED





### SPECIFICATIONS

**Laser Welded Airhole Mouth Piece**  
 Trou d'aération signature Airhole Welded coupé au laser  
 オリジナルAirholeマウスピース (レーザー加工)  
 Airhole Lasergeschweißtes Mundstück

**UPF 50 for 98% Sun Protection**  
 UPF 50 pour 95% de protection solaire  
 UPF 50 の日焼け予防効果  
 98% Sonnenblocker bearbeitet mit UPF 50

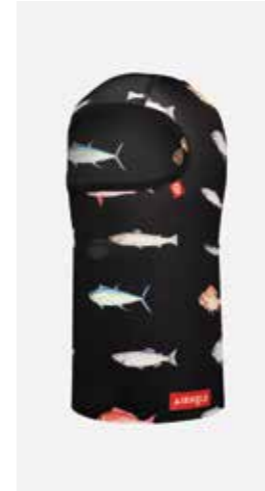
**Perforated Drylite Polyester + Lycra**  
 Polyester +Lycra Drylite perforé  
 穴あけ加工Dryliteポリエステル+ライクラ  
 Drylite Polyester + Lycra, perforiert

### BENEFITS

**Classic Shape**  
 Forme classique  
 クラシックな形  
 Klassische Form

**Moisture Wicking**  
 évacuation de l'humidité  
 速乾  
 Feuchtigkeitsabführend

**Quick Dry**  
 Séchage ultra rapide  
 速乾  
 Schnell Trocknend



**ANGLER**  
 AHB2DL-ANGL



**BADLANDS**  
 AHB2DL-BAD



**SURVIVAL**  
 AHB2DL-SRVL



**SOUVENIER**  
 AHB2DL-SVNR



**TROPICAL**  
 AHB2DL-TROP



**WASHED BLACK**  
 AHB2DL-WSBK



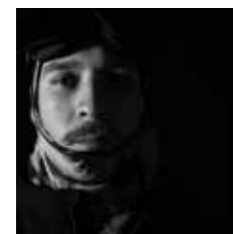
**WASHED DYE**  
 AHB2DL-WSDY



**WASHED GREY**  
 AHB2DL-WSGY







**SPECIFICATIONS**

**Laser Welded Airhole Mouth Piece**  
 Trou d'aération signature Airhole Welded coupé au laser  
 オリジナルAirholeマウスピース (レーザー加工)  
 Airhole Lasergeschweißtes Mundstück

**DWR Coated for Water Resistance**  
 Revêtement DWR pour Résistant à l'eau  
 DWR撥水加工済み  
 Wasserabweisende DWR Imprägnierung

**Fine Yarn Polyester + Spandex Drytech**  
 Fils fins Polyester + Spandex Drytech  
 ファイン糸ポリエステル + スパンデックスDrytech  
 Feines Garn Polyester + Spandex Drytech

**BENEFITS**

**Breathe Free with Airhole**  
 Respirez gratuit avec Airhole  
 Airhole を通し、自然な呼吸が可能  
 Freies Atmen mit Airhole

**Water Resistant**  
 Résistant à l'eau  
 耐水  
 Wasserfest

**Brushed Inside for Warmth & Comfort**  
 Brossé intérieur pour plus de chaleur et de confort  
 内部繊維の密植で温かく快適な着け心地  
 Angeraute Innenseite für Wärme & Komfort



**BLACK**  
 AHBIDT-BLK



**RAIN CAMO**  
 AHBIDT-RNCM



**RED BUFFALO**  
 AHBIDT-RDBF



**OUTDOOR**  
 AHBIDT-OTDR



**STORM**  
 AHBIDT-STRM



**SHARK**  
 AHBIDT-SHRK



**SKULL**  
 AHBIDT-SKL

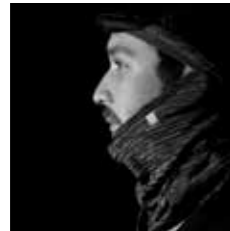


**SNOW TIGER**  
 AHBIDT-SNTG



**SASQUATCH**  
 AHBIDT-SASQ





## SPECIFICATIONS

### Silicone Injected Airhole Mouth Piece

Trou d'aération signature Airhole en silicone injecté  
オリジナルAirholeマウスピース (シリコン注入加工)  
Airhole Mundstück aus eingespritztem Silikon

### DWR Coated for Water Resistance

Revêtement DWR pour Résistant à l'eau  
DWR撥水加工済み  
Wasserabweisende DWR Imprägnierung

### Polyester + Lycra Waffleknit

Polyester + Lycra tricoté en point gaufre  
ポリエステル+ライクラ ワッフルニット  
Polyester + Lycra Waffelmuster

## BENEFITS

### Full Hinge Provides Adaptable Use

Le dispositif d'articulation complet permet une utilisation adaptable  
フルヒンジで状況に応じた使用が可能  
Vollständiges Bandsystem für anpassungsfähige Nutzung

### Water Resistant

Résistant à l'eau  
耐水  
Wasserfest

### Heat Management

Gestion de la chaleur  
熱管理  
Wärmemanagement



BLACK  
AHB5WK-BLK



TECH ARMY  
AHB5WK-TCAR

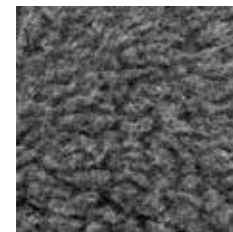


TECH BLUE  
AHB5WK-TCBL



TECH GREY  
AHB5WK-TCGY





**SPECIFICATIONS**

**Embroidered Airhole Mouth Piece**  
 Trou d'aération signature brodée Airhole Embroidered  
 オリジナルAirholeマウスピース (刺しゅう入り)  
 Airhole Besticktes Mundstück

**Natural Fibre Insulator + Weather Resistor**  
 Isolation de fibré naturel et résistant aux intempéries  
 天然繊維を使用したインサレーション/撥水加工済み  
 Naturfaser Insolation und Wetter abweisend

**95% Merino Wool + 5% Spandex**  
 95% laine mérinos + 5% spandex  
 95%メリノウール + 5% スパンテックス  
 95% Merino Wolle + 5% Elasthan

**BENEFITS**

**No Odor**  
 Aucune odeur  
 無臭  
 Geruchlos

**Stays Warm When Wet**  
 Restez au chaud même quand il est mouillé  
 ウェザープロテクション  
 Bleibt auch bei Nässe warm

**Renewable and Biodegradable**  
 Renouvelable et biodegradable  
 再生可能および生分解性  
 Erneuerbare und biologisch abbaubar



**BLACK**  
 AHBIMR-BLK



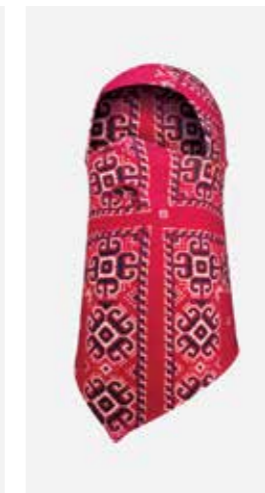
**HEATHER GREY**  
 AHBIMR-HRGY



**WASHED MARINE**  
 AHBIMR-WSMR



**DUST**  
 AHBIMR-DUST

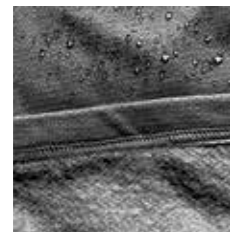


**BURGUNDY PAISLEY**  
 AHBIMR-BRPS



**WHITE BUFFALO**  
 AHBIMR-WTBF





## SPECIFICATIONS

### Silicone Injected Airhole Mouth Piece

Trou d'aération signature Airhole en silicone injecté  
オリジナルAirholeマウスピース (シリコン注入加工)  
Airhole Mundstück aus eingespritztem Silikon

### Seamless Knitting for Breathability

Tricot sans couture pour faciliter la respiration  
精細な編み目で自然な呼吸が可能  
Nahtloses Strickverfahren für Atmungsaktivität

### Nylon + Polyester + Spandex Featherlite

Nylon 55% Polyester 40% Spandex 5%  
55%ナイロン 40%ポリエステル 5%スパンデックス  
55% Nylon 40% Polyester 5% Elasthan

## BENEFITS

### Brushed Inside for Warmth & Comfort

Brossé intérieur pour plus de chaleur et de confort  
内部繊維の密植で温かく快適な着け心地  
Angeraute Innenseite für Wärme & Komfort

### Moisture Wicking

évacuation de l'humidité  
速乾  
Feuchtigkeitsabführend

### Quick Dry

Séchage ultra rapide  
速乾  
Schnell Trocknend



BLACK  
AHB2FT-BLK



HYPER BLUE  
AHB2FT-HYBL



HYPER GREY  
AHB2FT-HYGY



HYPER ORANGE  
AHB2FT-HYOR

## ADDITIONAL NOTES

### Fabric Stretches for One Size Fits Most

Respirez gratuitement avec Airhole  
Airholeを通し、自然な呼吸が可能  
Freies Atmen mit Airhole







## SPECIFICATIONS

### Silicone Injected Airhole Mouth Piece

Trou d'aération signature Airhole en silicone injecté  
オリジナルAirholeマウスピース (シリコン注入加工)  
Airhole Mundstück aus eingespritztem Silikon

### DWR Coated for Water Resistance

Revêtement DWR pour Résistant à l'eau  
DWR撥水加工済み  
Wasserabweisende DWR Imprägnierung

### Polyester + Spandex Polar Fleece

Polyester + Spandex Molletoné Polar  
ポリエステル + スパンドックステックフリース  
Polyester + Spandex Polar Fleece

## BENEFITS

### Breathe Free with Airhole

Respirez gratuit avec Airhole  
Airhole を通し、自然な呼吸が可能  
Freies Atmen mit Airhole

### Stays Warm When Wet

Restez au chaud même quand il est mouillé  
ウェザープロテクション  
Bleibt auch bei Nässe warm

### Brushed Inside for Warmth & Comfort

Brossé intérieur pour plus de chaleur et de confort  
内部繊維の密植で温かく快適な着け心地  
Angeraute Innenseite für Wärme & Komfort



BLACK  
AHBIPL-BLK



HEATHER CHARCOAL  
AHBIPL-HRCH



HEATHER GREY  
AHBIPL-HRGY



HEATHER MARINE  
AHBIPL-HRMR



HEATHER PINK  
AHBIPL-HRPK



HEATHER WHITE  
AHBIPL-HRWT





**LOGO**  
AHBIPL-LOGO



**POLAR BEARS**  
AHBIPL-PLBR



**RESORT**  
AHBIPL-RSRT



**SPLATTER**  
AHBIPL-SPLT



**WOODLAND CAMO**  
AHBIPL-WDCM



**BORO**  
AHBIPL-BORO



**NAVAJO**  
AHBIPL-NVJO



**NIGHT ROSE**  
AHBIPL-NTRS



**HUNTER**  
AHBIPL-HNTR







## SPECIFICATIONS

### Embroidered Airhole Mouth Piece

Trou d'aération signature brodée Airhole Embroidered  
オリジナルAirholeマウスピース (刺しゅう入り)  
Airhole Besticktes Mundstück

### Hydrophobic Fabric

Tissu hydrophobe  
疎水性布地  
Wasserabweisendes Material

### DWR Microfleece Neck + Drytech Hood

Textile micro polaire DWR autour du cou + cagoule Drytech  
DWRマイクロフリースネック+Drytechフード  
Hals aus DWR Microfleece + Haube aus Drytech-Material

## BENEFITS

### Water Resistant

Résistant à l'eau  
耐水  
Wasserfest

### Stays Warm When Wet

Restez au chaud même quand il est mouillé  
ウェザープロテクション  
Bleibt auch bei Nässe warm

### Drytech Hood Provides a Perfect Fit for Helmets

La cagoule Drytech offre un ajustement parfait pour les casques  
Drytechフードがヘルメットに最適なフィットを提供  
Drytech Haube bietet eine perfekte Passform für Helme



BLACK  
AHB6MF-BLK



HEATHER BLACK  
AHB6MF-HRBK



HEATHER GREY  
AHB6MF-HRGY



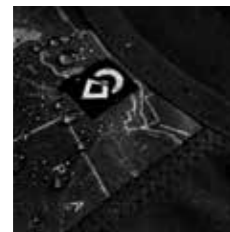
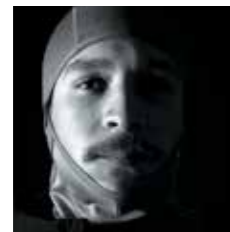
HEATHER PINK  
AHB6MF-HRPK



HEATHER NAVY  
AHB6MF-HRNV



HEATHER GREEN  
AHB6MF-HRGN



## SPECIFICATIONS

### Silicone Injected Airhole Mouth Piece

Trou d'aération signature Airhole en silicone injecté  
オリジナルAirholeマウスピース (シリコン注入加工)  
Airhole Mundstück aus eingespritztem Silikon

### DWR Coated for Water Resistance

Revêtement DWR pour Résistant à l'eau  
DWR撥水加工済み  
Wasserabweisende DWR Imprägnierung

### 3 Layer DWR Coated Recycled Polyester

Revêtement DWR 3 Couches - Polyester recyclé  
DWR加工が施された3層のリサイクルポリエステルを使用  
3 Layer DWR Coated Wiederverwertbare Polyester

## BENEFITS

### Stretch Drytech Back for Comfort

Revêtement du dos avec technologie Stretch Drytech pour plus confort  
伸縮性Drytechのバックで快適  
Dehnbare Drytech Rückseite für mehr Komfort

### 20,000mm Water + Wind Resistant

20,000mm Résistant à l'eau et le vent  
20,000mm の防水と防風  
20,000mm Wassersäule und Wind abweisend

### Ergonomic Shape

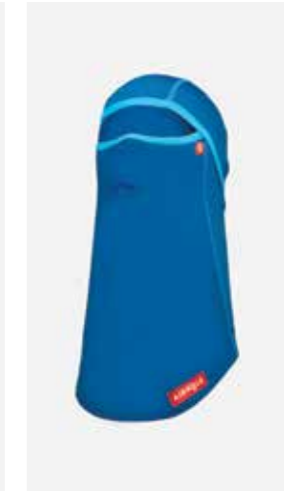
Forme ergonomique  
人間工学に基づいた形状  
Ergonomische Form



**BLACK**  
AHB53L-BLK



**MAGENTA**  
AHB53L-MGNT



**PACIFIC BLUE**  
AHB53L-PCBL



**HEATHER GREY**  
AHB53L-HGRY



**TOPOGRAPHIC BLACK**  
AHB53L-TPBK

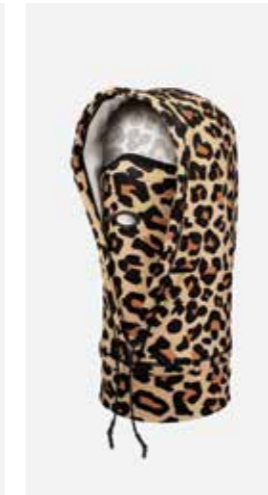


# AIRHOODS

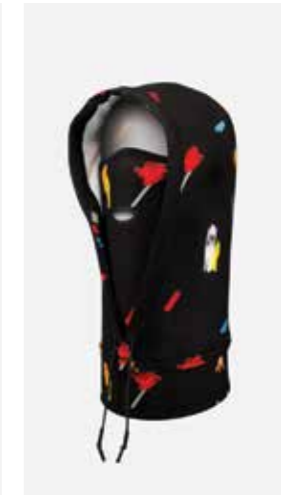
DRYTECH  
POLAR + DRYTECH  
INSULATED



**BLACK**  
AHB8DT-BLK



**LEOPARD**  
AHB8DT-LPRD



**DECO**  
AHB8DT-DECO



## SPECIFICATIONS

### Laser Welded Airhole Mouth Piece

Trou d'aération signature Airhole Welded coupé au laser  
オリジナルAirholeマウスピース (レーザー加工)  
Airhole Lasergeschweißtes Mundstück

### DWR Coated for Water Resistance

Revêtement DWR pour Résistant à l'eau  
DWR撥水加工済み  
Wasserabweisende DWR Imprägnierung

### Fine Yarn Polyester + Spandex Drytech

Fils fins Polyester + Spandex Drytech  
ファイン糸ポリエステル + スパンテックスDrytech  
Feines Garn Polyester + Spandex Drytech

## BENEFITS

### Hood Pulls Over for Extra Protection

Rajout de la cagoule pour une protection supplémentaire  
フードは更なるプロテクションのために引き出し可能  
Überziehbare Haube für zusätzlichen Schutz

### Water Resistant

Résistant à l'eau  
耐水  
Wasserfest

### Brushed Inside for Warmth & Comfort

Brossé intérieur pour plus de chaleur et de confort  
内部繊維の密植で温かく快適な着心地  
Angeraute Innenseite für Wärme & Komfort







## SPECIFICATIONS

### Laser Welded Airhole Mouth Piece

Trou d'aération signature Airhole Welded coupé au laser  
オリジナルAirholeマウスピース (レーザー加工)  
Airhole Lasergeschweißtes Mundstück

### DWR Coated for Water Resistance

Revêtement DWR pour Résistant à l'eau  
DWR撥水加工済み  
Wasserabweisende DWR Imprägnierung

### Polar Fleece Outer + Drytech Lining

Doublure polaire à l'extérieur + Drytech  
ポーラーフリースアウター+Drytechライニング  
Außenseite aus Polar Fleece + Innenfütterung mit Drytech

## BENEFITS

### 3 Cinches for Adjustability

3 sangles pour l'ajuster  
調節可能な3個のシンク  
3 Gurte für Verstellbarkeit

### Hood Pulls Over for Extra Protection

Rajout de la cagoule pour une protection supplémentaire  
フードは更なるプロテクションのために引き出し可能  
Überziehbare Haube für zusätzlichen Schutz

### Brushed Inside for Warmth & Comfort

Brossé intérieur pour plus de chaleur et de confort  
内部繊維の密植で温かく快適な着け心地  
Angeraute Innenseite für Wärme & Komfort



BLACK  
AHB3PL-BLK



HEATHER GREY  
AHB3PL-HRGY



DIP DYE  
AHB3PL-DPDY



PALMS  
AHB3PL-PALM



RED BUFFALO  
AHB3PL-RDBF



RAIN CAMO  
AHB3PL-RNCM





## SPECIFICATIONS

### Embroidered Airhole Mouth Piece

Trou d'aération signature brodée Airhole Embroidered  
オリジナルAirholeマウスピース (刺しゅう入り)  
Airhole Besticktes Mundstück

### Compact + Portable + Protective

Compact + Portable + Protecteur  
コンパクト+ポータブル+プロテクション  
Kompakt + Mobil + Schützend

### Lightweight Nylon w/ Duck Down

Nylon léger avec duvet de canard  
軽量ナイロン、ダックダウン入り  
Leichtes Nylon mit Entendaunen

## BENEFITS

### Hood Packs Away to Become Airtube

Enlevez le dispositif de la cagoule pour le transformer en Airtube  
フードパックを取り外してAirtubeに  
Verstaubare Haube für Verwendung als Airtube

### Water Resistant

Résistant à l'eau  
耐水  
Wasserfest

### Ergonomic Fit w/ Elastic Binding

Coupe ergonomique avec structure élastique  
弾性バインディングにより人間工学に基づくフィット  
Ergonomische Passform mit elastischem Band



BLACK  
AHB91N-BLK



CHARCOAL  
AHB91N-CHAR



ARMY  
AHB91N-ARMY



NAVY  
AHB91N-NAVY



GREY  
AHB91N-GREY



BURGUNDY  
AHB91N-BUR



ERGONOMIC NECK GAITOR



HOOD PACKS AWAY  
BECOMING A NECK GAITOR



PULL OUT HOOD FOR  
EXTRA PROTECTION





TECHHATS

5 PANEL  
TRAPPER  
BUCKET



**BLACK**  
AHB7RS-BLK

**CHARCOAL**  
AHB7RS-CHAR

**GREY**  
AHB7RS-GREY



**SPECIFICATIONS**

**Silicone Injected Airhole Mouth Piece**  
Trou d'aération signature Airhole en silicone injecté  
オリジナルAirholeマウスピース (シリコン注入加工)  
Airhole Mundstück aus eingespritztem Silikon

**Brim + Neck Gaiter for Weather Protection**  
Capuche + tour de cou pour la protection contre  
les intempéries  
ウェザープロテクションのためのブリム+ネックガイター  
Kragen + Halsgamasche für Wetterschutz

**2 Layer Outer + Brushed Fleece Lining**  
Doublure extérieure en 2 couches + doublure polaire brossée  
2レイヤーアウター+密植フリースライニング  
2-lagiges Obermaterial + Futter aus angerautem Fleece

**BENEFITS**

**Back Adjustability**  
Réglage arrière  
バック調整可能  
Zurück Verstellbarkeit

**10,000mm Water + Wind Resistant Outer**  
Résistant aux vents extérieurs + résistant à 10 000 mm d'eau  
10m防水+防風のアウター  
Wasserbeständig bis 10.000 mm und windbeständige Oberfläche

**Removable Facemask w/ Zipper Pocket**  
Masque facial amovible avec poche zippée  
脱着可能ファスナーマスク、ジッパーポケット付き  
Abnehmbare Gesichtsmaske mit Reißverschluss tasche



NECK PROTECTION FOR SUN  
AND WEATHER PROTECTION



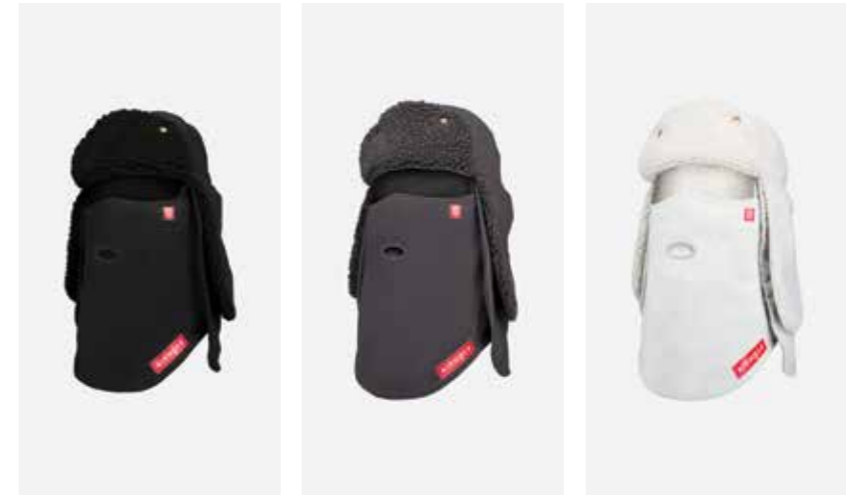
REMOVABLE FACEMASK FITS  
INTO ZIPPERED POCKET



REAR FIT ADJUSTMENT &  
ZIPPERED POCKET







**BLACK**  
AHBIIRS-BLK

**CHARCOAL**  
AHBIIRS-CHAR

**GREY**  
AHBIIRS-GREY



**SPECIFICATIONS**

**Silicone Injected Airhole Mouth Piece**  
Trou d'aération signature Airhole en silicone injecté  
オリジナルAirholeマウスピース (シリコン注入加工)  
Airhole Mundstück aus eingespritztem Silikon

**Brim + Neck Gaiter for Weather Protection**  
Capuche + tour de cou pour la protection contre les  
intempéries  
ウェザープロテクションのためのブリム+ネックガイター  
Kragen + Halsgamasche für Wetterschutz

**2 Layer Outer + Brushed Fleece Lining**  
Doublure extérieure en 2 couches + doublure polaire brossée  
2レイヤーアウター+密植フリースライニング  
2-lagiges Obermaterial + Futter aus angerautem Fleece

**BENEFITS**

**Back Adjustability**  
Réglage situé à l'arrière  
バック調整可能  
Rückseite verstellbar

**10,000mm Water + Wind Resistant Outer**  
Résistant aux vents extérieurs + résistant à 10 000 mm d'eau  
10m防水+防風のアウター  
Wasserbeständig bis 10.000 mm und windbeständige Oberfläche

**Removable Facemask w/ Zipper Pocket**  
Masque facial amovible avec poche zippée  
脱着可能ファスナーマスク、ジッパーポケット付き  
Abnehmbare Gesichtsmaske mit Reißverschluss tasche



TRAPPER DETAILS PROVIDE  
ULTIMATE WARMTH AND COMFORT

REMOVABLE ERGONOMIC MASK  
FITS INTO ZIPPERED POCKET

REAR FIT ADJUSTMENT &  
ZIPPERED POCKET





**BLACK**  
AHBIORS-BLK

**CHARCOAL**  
AHBIORS-CHAR

**GREY**  
AHBIORS-GREY



## SPECIFICATIONS

### Silicone Injected Airhole Mouth Piece

Trou d'aération signature Airhole en silicone injecté  
オリジナルAirholeマウスピース (シリコン注入加工)  
Airhole Mundstück aus eingespritztem Silikon

### Brim + Neck Gaitor for Weather Protection

Capuche + tour de cou pour la protection contre les intempéries  
ウェザープロテクションのためのブリム+ネックガイター  
Kragen + Halsgamasche für Wetterschutz

### 2 Layer Outer + Brushed Fleece Lining

Doublure extérieure en 2 couches + doublure polaire brossée  
2レイヤーアウター+密植フリースライニング  
2-lagiges Obermaterial + Futter aus angerautem Fleece

## BENEFITS

### Back Adjustability

Réglage arrière  
バック調整可能  
Zurück Verstellbarkeit

### 10,000mm Water + Wind Resistant Outer

Résistant aux vents extérieurs + résistant à 10 000 mm d'eau  
10m防水+防風のアウター  
Wasserbeständig bis 10.000 mm und windbeständige Oberfläche

### Removable Facemask w/ Zipper Pocket

Masque facial amovible avec poche zippée  
脱着可能ファスナーマスク、ジッパーポケット付き  
Abnehmbare Gesichtsmaske mit Reißverschlussentasche



NECK PROTECTION FOR SUN AND WEATHER PROTECTION



REMOVABLE ERGONOMIC MASK FITS INTO ZIPPERED POCKET



REAR FIT ADJUSTMENT & ZIPPERED POCKET





## KEY FEATURES

### THE AIRHOLE

Featured on all of our masks, the Airhole allows breath to escape freely, avoiding the build up of condensation to keep you warm, dry and your goggles fog free. A dry mask ensures all day comfort and no bad odours.

### RECYCLED FROM PET BOTTLES

Our recycled fabrics are made from 100% certified recycled PET (Polyethylene terephthalate) plastic bottles. Used water bottles are crushed, chipped, melted and extruded to make high quality polyester fibres.

### WELDED AIRHOLE

The Welded Airhole is laser cut and heat transferred to the fabric to provide a lightweight, technical and minimal finish.

### EMBROIDERED AIRHOLE

The Embroidered Airhole is a traditional sewing method used with knitted fabrics such as merino, cashmere or double layer microfleece to provide a soft, comfortable finish.

### 10,000mm WATERPROOF

Fabrics with a 10,000mm rating resist light rain, average snow and light water pressure to keep you warm and dry in most conditions.

### MOISTURE WICKING

Our moisture wicking fabrics draw sweat, perspiration and condensation away from the skin keeping you warm and dry. Moisture evaporates from the fabric surface rather than getting trapped inside.

### DWR (DURABLE WATER REPELLANT)

DWR is a durable fabric coating which gives our masks water repellent properties and is used to prevent the face and outer layer of the fabric from becoming saturated with water.

### DIRECT INJECTED SILICONE AIRHOLE

The Direct Injected Airhole is applied with silicone directly to the fabric, bonding to the front and back to provide a comfortable, hygienic and easy to clean finish.

### 20,000mm WATERPROOF

Fabrics with 20,000mm rating resist heavy rain, wet snow and higher water pressure to keep you warm and dry in harsher conditions.

### QUICK DRY

Our quick drying fabrics allow water, perspiration and condensation to evaporate much faster by distributing moisture across a larger surface area, keeping your skin warm and dry.

### SIGNATURE DESIGN VELCRO

Our easy to use Velcro is now softer than ever and the applique design keeps masks flexible for unlimited movement, less bunching and prevents hair from catching.

### ULTRAVIOLET PROTECTION FACTOR

The UPF rating indicates how effectively fabrics shield skin from harmful ultraviolet (UV) rays. The higher the UPF number, the greater degree of UV protection a garment offers. All Airholes have a minimum UPF rating of 50, blocking 98% of harmful UV rays.

### MULTI-USE

Our multi-use designs give our masks great versatility allowing them to be worn as neck gaiters, facemasks, balaclavas and headbands.

## FABRIC DESCRIPTIONS

### 2 LAYER

2 Layer is a high performance dual layer fabric with a bonded waterproof breathable membrane offering a 10,000mm water-resistant outer and a soft, comfortable lining that is perfect for all conditions.

### 3 LAYER

3 Layer is our most technical fabric construction, featuring a hypoallergenic finish, windproof bonded 3 layer fabric with a waterproof breathable membrane offering a 20,000mm water repellency. These masks ensure comfort and performance in harsh conditions.

### DRYTECH

Drytech is a high performance DWR treated microfibre fabric that wicks moisture and regulates temperature, making it perfect for all conditions.

### FEATHERLITE

Featherlite is a seamless construction that has superior moisture wicking properties and a comfortable stretch design. Favoured by our pro athletes, Featherlite performs in all conditions.

### INSULATED

Insulated fabrics 2 layer 10,000mm water resistant, are 100% down filled with a soft Tricot lining to provide the warmest finish with minimal weight. These masks are guaranteed to keep the cold at bay in harsh conditions.

### MICROFLEECE

Microfleece is a traditional lightweight, soft fabric that stays warm even when wet. With great moisture wicking properties and our DWR coating it keeps your face cozy and warm in varied conditions.

### POLAR

Polar is a high performance microfibre DWR fleece that wicks moisture and protects against cold. Polar is our most popular fabric construction thanks to its versatility in all conditions.

### WAFFLEKNIT

Waffle Knit is a technical gridded fleece fabric that repels weather and allows air to flow freely to keep you warm and dry. Waffle Knit is stretchy, comfortable and great for all conditions.

### DRYLITE

Drylite is a lightweight, seamless construction that acts like a second skin. With incredible moisture wicking properties and our UPF 50 finish, Drylite is ideal for spring conditions.

### MERINO

Merino wool is a highly technical, natural fibre that has superior heat managing and moisture wicking properties and prevents odor. Merino is lightweight allowing facemasks to be smaller and more compact without sacrificing performance in all conditions.

## MASK USE AND SIZE

### MASK SIZING

Airhole masks vary in size and fit depending on the fabric and style. Most masks are available in SM or ML and some in One Size only when the fabrics are super stretchy accommodating multiple head shapes and sizes. S/M masks are most suitable for smaller faces, women or youth. M/L masks are most suitable for larger faces, men or older teens. SM masks Airhole is situated closer to the top of the mask than the ML to allow a perfect fit.



## AIRTUBES

### AIRTUBE

Our classic Airtube shape has a straight top and bottom finish for an easy-to-wear fit. Wear it down as a cozy neck gaiter, as a headband to keep your ears warm or pull it up to seal out the elements.

### AIRTUBE GAITOR

Our Airtube Gaitor provides the ultimate cold weather protection. Utilizing a rear technical strap to adjust the fit of the mask, the Airtube Gaitor gives comfort with style and protection.

### AIRTUBE ERGO

Our ergonomic Airtubes contour to the face to provide the best possible fit. The shape matches perfectly with your goggles to seal out the elements.

## AIRHOODS

### AIRHOOD

Our Balaclava Airhood is street inspired and has a customizable fit with 3 cinch zones. It will fit over a helmet or beanie and works as a stand-alone hood for keeping out the elements all whilst protecting your face with the built in mask.

### AIRHOOD PACKABLE

Water resistant, warm, and portable, the Packable Airhood is the ultimate travel companion. Wear as a neck gaiter in any condition or pull out the hood to provide superior warmth and protection in harsh conditions.

### AIRHOLE LITE

A nod to street styling, the Airhood 2 is a technical perspective of wearing a hoody in the alpine. The Drytech DWR fabric resists the elements when wore as an Airtube. Use the hood in harsh conditions, providing full coverage, including over a helmet.

## FACEMASKS

### FACEMASK BANDANA

Our Standard Lite facemask is where Airhole began. Like a traditional bandana, this facemask is made technical by including the signature Airhole breath hole, specialist fabrics, and our Signature Design Velcro.

### FACEMASK STANDARD

Our Standard Facemask is our patented design that revolutionized the facemask category and continues to be the worlds best selling mask. The masks is 2 Layer with a high performance dual layer recycled fabric with a bonded waterproof breathable membrane offering a 10,000mm water-resistant outer and a soft, comfortable lining that is perfect for all conditions.

## TECHNICAL HATS

### 5 PANEL

Keep dry and comfortable in all conditions, the 5 Panel hat provides mountain protection with street styling. Featuring a DWR outer coating, a 10,000mm waterproof membrane, and warm fleece lining, the 5 Panel is the ultimate mountain hat. The added skirt and removable facemask ensure no skin is exposed to the elements. Pack the removable facemask in to the zippered pocket when not required.

### BUCKET

Updating the classic silhouette with modern features, the Trapper hat provides superior protection from the elements. Featuring a DWR outer coating, a 10,000mm waterproof membrane, and warm fleece lining, the Trapper hat has the classic styling with added innovation. The added skirt and removable facemask ensure no skin is exposed to the elements. Pack the removable facemask in to the zippered pocket when not required.

### TRAPPER

Ideal for the sun drenched mountain days, the Bucket hat takes an outdoor staple and innovates it. Featuring a DWR outer coating, a 10,000mm waterproof membrane, and warm fleece lining, the Bucket Hat is now a functional alpine necessity. The added skirt and removable facemask ensure no skin is exposed to the elements. Pack the removable facemask in to the zippered pocket when not required.

## BALACLAVAS

### BALACLAVA CLASSIC

Our classic Balaclava shape provides head and full-face protection. The Balaclava Classic has a perfect fit under helmets by eliminating the need for a beanie.

### BALACLAVA FULL HINGE

Full Hinge Balaclava provides more flexibility to the wearer by splitting the top and bottom sections, giving you 4 masks in 1. The full balaclava seals out the elements whilst the front can hinge down to free your face. Keep the face up and pull down the top for better temperature control or pull it all down for a classic neck gaiter.

### BALACLAVA HINGE

The bedrock of the Airhole range, our Balaclava Hinge allows fabric with less stretch to function as full head and face protection whilst allowing you to pull the face portion under the chin to free your face and eliminating the need for a beanie.

### BALACLAVA COMBO

Our Balaclava Combo utilizes a Drytech head with a dual layer microfleece face. This allows both heat management and protection when required whilst still providing comfort under a helmet.







Photography by:

DARCY BACHA  
JEREMY KORESKE

Heading typeface: Texta  
Body typeface: Quincy CF

Printed on PEFC approved stock 150gsm & 300gsm

**FALL WINTER 2018/19 PRODUCT CATALOGUE**  
Designed at Endeavor Design Inc., Vancouver  
Produced by Szyucai Printing, Shenzhen, China  
© 2018/19 Airhole Facemasks Inc.







LET'S GO TO  
NEW PLACES

#Airhole #OutThere

I FACEMASKS

3 LAYER  
P.350/57



2 LAYER  
P.48/55



POLAR  
P.46/47



INSULATED  
P.42/43



3 LAYER  
P.40/41



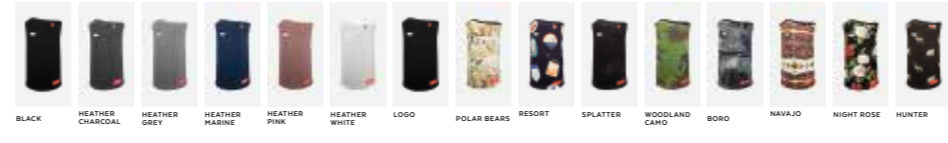
2 LAYER  
P.38/39



MICROFLEECE  
P.36/37



POLAR  
P.32/33



FEATHERLITE  
P.30/31



MERINO  
P.28/29



WAFLEKNIT  
P.26/27



DRYTECH  
P.22/23



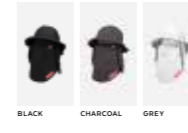
DRYLITE  
P.20/21



I AIRTUBES

I TECH HATS

BUCKET  
P.32/33



TRAPPER  
P.30/31



5 PANEL  
P.33/35



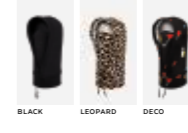
INSULATED  
P.34/35



POLAR  
P.32/33



DRYTECH  
P.30/31



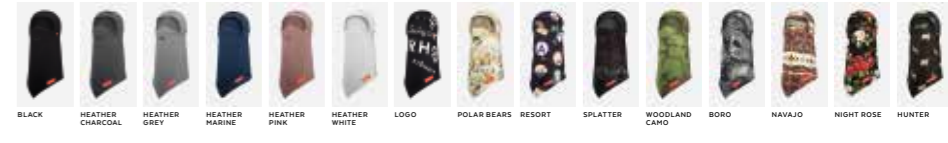
3 LAYER  
P.26/27



MICROFLEECE  
P.24/25



POLAR  
P.20/21



FEATHERLITE  
P.18/19



MERINO  
P.16/17



WAFLEKNIT  
P.14/15



DRYTECH  
P.12/13



DRYLITE  
P.10/11



LINE OVERVIEW





