



AIRHOLE

FALL / WINTER
2018 - 2019





LET'S GO TO NEW PLACES

We are no longer defined by what we do, but rather why we do it. Skiers surf, surfers sail, snowboarders fish – whatever, we are all out for the same cause: adventure.

Adventure can mean different things to different people. To us, it's very simple: adventure is pushing beyond your normal. It's being a little irresponsible. It's not knowing what might happen. It's doing something that becomes a good story.

We are all collectively driven by these strange, absurd adventures... and these adventures are what make our products necessary.

Let's go to new places.

#Airhole #OutThere





AIRHOLE

AIRHOLE IS
RENOWNED FOR
THE SIMPLEST
TECHNOLOGICAL
INNOVATION IN
FACE PROTECTION –
THE AIRHOLE.

Airhole protects the wearer from all elements and allows free breathing without condensation through the single breath hole.

Airhole was created in the backcountry of Whistler and has grown to become a global leader in action sports face protection.

Airhole makes the ultimate face protection - stay out there longer.







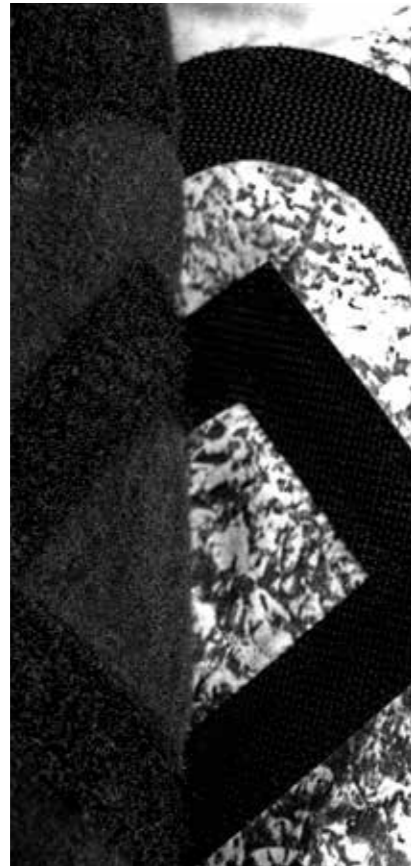


TECHNICAL INNOVATION

or
THE AIRHOLE

The Airhole is standard on all of our masks and is designed to allow breath to escape freely, avoiding the build up of condensation to keep you dry, warm and goggles fog free. Stay out there longer.





02
**SIGNATURE DESIGN
VELCRO**

Airhole's Signature Design Velcro utilizes a softer, easier-to-use logo shaped velcro which is applied to the masks. This gives great coverage and makes adjustment incredibly easy. The new velcro allows the hooks only to catch the loops and avoids hair or anything else that may be caught.



03
UPF PROTECTION

All Airhole masks have a minimum UPF of 50 which means they block 98% of harmful UV rays. This helps prevent premature aging and the risk of damage to the wearers skin. Unlike many sunblock products, Airhole Facemasks block both UVA and UVB radiation.



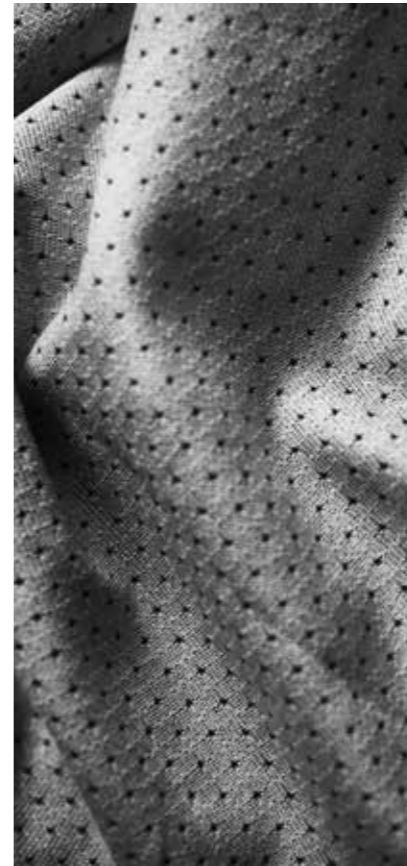
04
RECYCLED FABRIC

Airhole uses yarn in several styles that has been made from recycled PET plastic bottles that are chipped, melted and extruded into a fine polyester yarn. This reduces the impact on the environment without sacrificing performance or quality.



05
HEAT MANAGEMENT

Grid fleece, fine yarn polyesters, and merino fibers are all part of our heat management program. When the wearer is active, moisture is wicked from the skin, escapes to the surface of the fabric and evaporates.



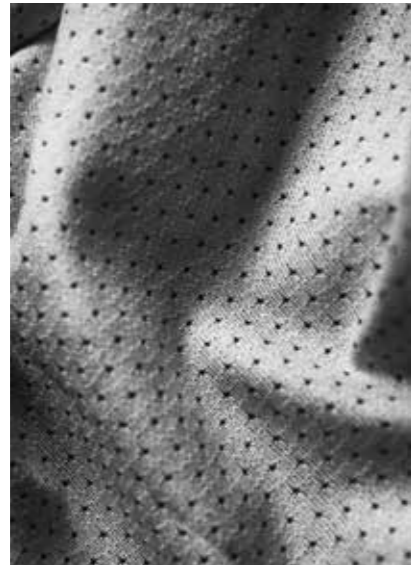
06
QUICK DRY

Hydrophobic yarn is used to eliminate fabric dampness. Moisture is spread across the surface of the fabric where it is quickly air dried.



07
WATER RESISTANCE

Many fabrics are treated with water resistant coatings to keep the elements at bay all day long. DWR is a durable fabric coating which gives Airhole masks water repellent properties, preventing the face and outer layer of the fabric from becoming saturated with water.



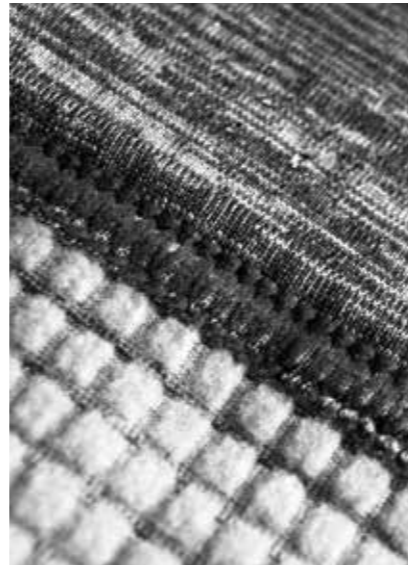
01
DRYLITE

- + MOISTURE WICKING
- + QUICK DRY
- + PERFORATED



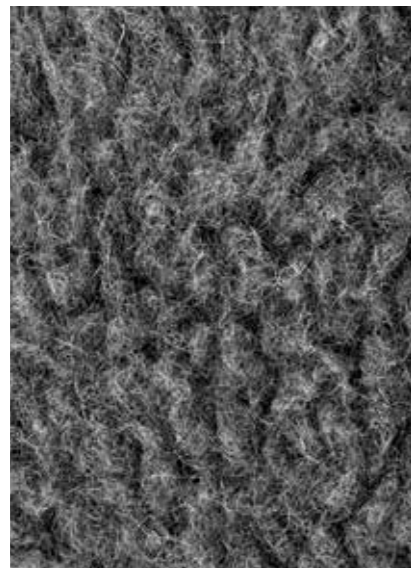
02
DRYTECH

- + MOISTURE WICKING
- + BRUSHED FINE KNIT MICROFIBER
- + DURABLE WATER RESISTANT (DWR) COATING



03
WAFFLEKNIT

- + HEAT MANAGEMENT
- + BRUSHED GRID FLEECE
- + DURABLE WATER RESISTANT (DWR) COATING



04
MERINO

- + MOISTURE WICKING
- + STAYS WARM WHEN WET
- + NATURAL + BIODEGRADABLE FABRIC
- + ODOR FREE



05
FEATHERLITE

- + MOISTURE WICKING
- + BRUSHED SEAMLESS KNIT FABRIC
- + SUPER STRETCHY FABRIC



06
POLAR

- + HYDROPHOBIC
- + STAYS WARM WHEN WET
- + FLAT FINISHED OUTER W/ BRUSHED INNER
- + DURABLE WATER RESISTANT (DWR) COATING



07
MICROFLEECE

- + HYDROPHOBIC
- + STAYS WARM WHEN WET
- + DOUBLE LAYER BRUSHED FABRIC
- + DURABLE WATER RESISTANT (DWR) COATING



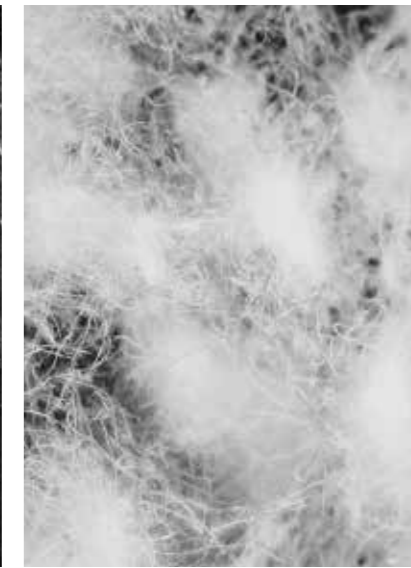
08
2 LAYER

- + 10,000mm MEMBRANE
- + RECYCLED POLYESTER
- + SEWN TOGETHER W/ A BRUSHED POLAR LINING
- + DURABLE WATER RESISTANT (DWR) COATING



09
3 LAYER

- + 20,000mm MEMBRANE
- + RECYCLED POLYESTER
- + BRUSHED BACKING
- + DURABLE WATER RESISTANT (DWR) COATING



10
INSULATED

- + DUCK DOWN FILL

AIRTUBES

DRYLITE
DRYTECH
WAFFLEKNIT
MERINO
FEATHERLITE
POLAR
MICROFLEECE
2 LAYER
3 LAYER
INSULATED





SPECIFICATIONS

Laser Welded Airhole Mouth Piece
 Trou d'aération signature Airhole Welded coupé au laser
 オリジナルAirholeマウスピース (レーザー加工)
 Airhole Lasergeschweißtes Mundstück

UPF 50 for 98% Sun Protection
 UPF 50 pour 95% de protection solaire
 UPF 50 の日焼け予防効果
 98% Sonnenblocker bearbeitet mit UPF 50

Perforated Drylite Polyester + Lycra
 Polyester +Lycra Drylite perforé
 穴あけ加工Dryliteポリエステル+ライクラ
 Drylite Polyester + Lycra, perforiert

BENEFITS

Long Length for Multipurpose
 Grande longueur pour des usages multiples
 多用途向けの長尺
 Lange Form für multifunktionalen Einsatz

Moisture Wicking
 évacuation de l'humidité
 速乾
 Feuchtigkeitsabführend

Quick Dry
 Séchage ultra rapide
 速乾
 Schnell Trocknend



ANGLER
 AHAILD-ANGL



BADLANDS
 AHAILD-BAD



SURVIVAL
 AHAILD-SRVL



SOUVENIER
 AHAILD-SVNR



TROPICS
 AHAILD-TROP



WASHED BLACK
 AHAILD-WBLK

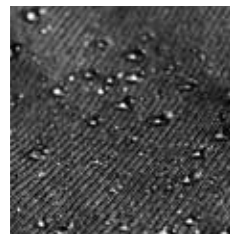


WASHED DYE
 AHAILD-WSDY



WASHED GREY
 AHAILD-WSGY





SPECIFICATIONS

Laser Welded Airhole Mouth Piece

Trou d'aération signature Airhole Welded coupé au laser
オリジナルAirholeマウスピース (レーザー加工)
Airhole Lasergeschweißtes Mundstück

DWR Coated for Water Resistance

Revêtement DWR pour Résistant à l'eau
DWR撥水加工済み
Wasserabweisende DWR Imprägnierung

Fine Yarn Polyester + Spandex Drytech

Fils fins Polyester + Spandex Drytech
ファイン糸ポリエステル + スパンデックスDrytech
Feines Garn Polyester + Spandex Drytech

BENEFITS

Ergonomic to Fit Goggles Seamlessly

Ergonomique pour s'adapter parfaitement aux lunettes de protection
人間工学による形状で隙間なくフィットするゴーグル
Ergonomische Passform für das nahtlose Einfügen einer Brille

Water Resistant

Résistant à l'eau
耐水
Wasserfest

Brushed Inside for Warmth & Comfort

Intérieur brossé pour plus de chaleur et de confort
暖かさ & 快適さのために内部をブラシ
Gebürstet für Wärme & Komfort



BLACK
AHA2DT-BLK



GREY
AHA2DT-GREY



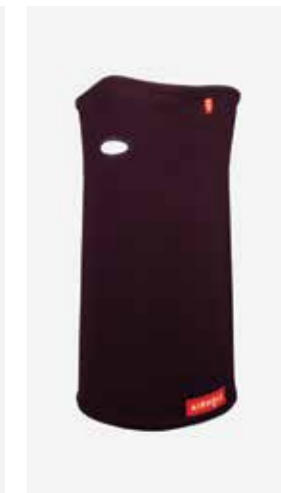
ARMY
AHA2DT-ARMY



DUSTY PINK
AHA2DT-DSPK



MERLOT
AHA2DT-MRLT



PLUM
AHA2DT-PLUM



MIDNIGHT FLORAL
AHA2DT-MFLR



ELECTRIC DYE
AHA2DT-ELDY



RAIN CAMO
AHA2DT-RNCM



PALMS
AHA2DT-PALM



BLACK PAISLEY
AHA2DT-BKPS



RED BUFFALO
AHA2DT-RDBF



OUTDOORS
AHA2DT-OTDR



STORM
AHA2DT-STRM



SHARK
AHA2DT-SHRK



SKULL
AHA2DT-SKL

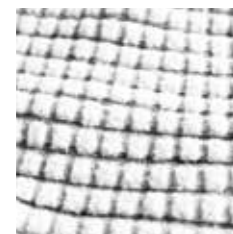
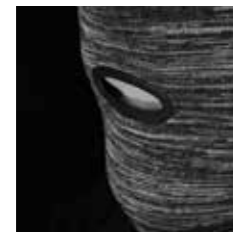


SNOW TIGER
AHA2DT-SNTG



SASQUATCH
AHA2DT-SASQ





SPECIFICATIONS

Silicone Injected Airhole Mouth Piece

Trou d'aération signature Airhole en silicone injecté
オリジナルAirholeマウスピース (シリコン注入加工)
Airhole Mundstück aus eingespritztem Silikon

DWR Coated for Water Resistance

Revêtement DWR pour Résistant à l'eau
DWR撥水加工済み
Wasserabweisende DWR Imprägnierung

Polyester + Lycra Waffleknit

Polyester + Lycra tricoté en point gaufre
ポリエステル+ライクラ ワッフルニット
Polyester + Lycra Waffelmuster

BENEFITS

Ergonomic to Fit Goggles Seamlessly

Ergonomique pour s'adapter parfaitement aux lunettes de protection
人間工学による形状で隙間なくフィットするゴーグル
Ergonomische Passform für das nahtlose Einfügen einer Brille

Heat Management

Gestion de la chaleur
温度保持能力
Wärmemanagement

Water Resistant

Résistant à l'eau
耐水
Wasserfest



BLACK
AHA2WK-BLK



TECH ARMY
AHA2WK-TCAR

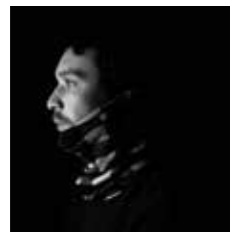


TECH BLUE
AHA2WK-TCBL



TECH GREY
AHA2WK-TCGY





SPECIFICATIONS

Embroidered Airhole Mouth Piece

Trou d'aération signature brodée Airhole Embroidered
オリジナルAirholeマウスピース (刺しゅう入り)
Airhole Besticktes Mundstück

Natural Fibre Insulator + Weather Resistor

Isolation de fibré naturel et résistant aux intempéries
天然繊維を使用したインサレーション/撥水加工済み
Naturfaser Insolation und Wetter abweisend

95% Merino Wool + 5% Spandex

95% laine mérinos + 5% spandex
95%メリノウール + 5% スパンデックス
95% Merino Wolle + 5% Elasthan

BENEFITS

No Odor

Aucune odeur
無臭
Geruchlos

Stays Warm When Wet

Restez au chaud même quand il est mouillé
ウェザープロテクション
Bleibt auch bei Nässe warm

Renewable and Biodegradable

Renouvelable et biodégradable
再生可能及び生分解性の素材
Erneuerbar und biologisch abbaubar



BLACK
AHA2MR-BLK



HEATHER GREY
AHA2MR-HRGY



WASHED MARINE
AHA2MR-WSMR



DUST
AHA2MR-DUST

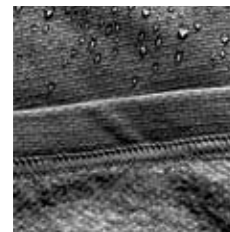


BURGUNDY PAISLEY
AHA2MR-BRPS



WHITE BUFFALO
AHA2MR-WTBF





SPECIFICATIONS

Silicone Injected Airhole Mouth Piece

Trou d'aération signature Airhole en silicone injecté
オリジナルAirholeマウスピース (シリコン注入加工)
Airhole Mundstück aus eingespritztem Silikon

Seamless Knitting for Breathability

Tricot sans couture pour faciliter la respiration
精細な編み目で自然な呼吸が可能
Nahtloses Strickverfahren für Atmungsaktivität

Nylon + Polyester + Spandex Featherlite

Nylon 55% Polyester 40% Spandex 5%
55%ナイロン 40%ポリエステル 5%スパンデックス
55% Nylon 40% Polyester 5% Elasthan

BENEFITS

Brushed Inside for Warmth & Comfort

Intérieur brosse pour plus de chaleur et de confort
暖かさ&快適さのために内部をブラシ
Gebürstet für Wärme & Komfort

Moisture Wicking

évacuation de l'humidité
速乾
Feuchtigkeitsabführend

Quick Dry

Séchage ultra rapide
速乾
Schnell Trocknend



BLACK
AHA2FT-BLK



HYPER BLUE
AHA2FT-HYBL



HYPER GREY
AHA2FT-HYGY



HYPER ORANGE
AHA2FT-HYOR

ADDITIONAL NOTES

Fabric Stretches for One Size Fits Most

Taille unique
フリーサイズ
Eine Größe passt meistens



SPECIFICATIONS

Silicone Injected Airhole Mouth Piece

Trou d'aération signature Airhole en silicone injecté
オリジナルAirholeマウスピース (シリコン注入加工)
Airhole Mundstück aus eingespritztem Silikon

DWR Coated for Water Resistance

Revêtement DWR pour Résistant à l'eau
DWR撥水加工済み
Wasserabweisende DWR Imprägnierung

Polyester + Spandex Polar Fleece

Polyester + Spandex Molletoné Polar
ポリエステル + スパンデックスステックフリース
Polyester + Spandex Polar Fleece

BENEFITS

Ergonomic to Fit Goggles Seamlessly

Ergonomique pour s'adapter parfaitement aux lunettes de protection
人間工学による形状で隙間なくフィットするゴーグル
Ergonomische Passform für das nahtlose Einfügen einer Brille

Stays Warm When Wet

Restez au chaud même quand il est mouillé
ウェザープロテクション
Bleibt auch bei Nässe warm

Brushed Inside for Warmth & Comfort

Intérieur brossé pour plus de chaleur et de confort
暖かさ&快適さのために内部をブラシ
Gebürstet für Wärme & Komfort



BLACK
AHA2PL-BLK



HEATHER CHARCOAL
AHA2PL-HRCH



HEATHER GREY
AHA2PL-HRGY



HEATHER MARINE
AHA2PL-HRMR



HEATHER PINK
AHA2PL-HRPK



HEATHER WHITE
AHA2PL-HRWT



LOGO
AHA2PL-LOGO



POLAR BEARS
AHA2PL-PLBR



RESORT
AHA2PL-RSRT



SPLATTER
AHA2PL-SPLT



WOODLAND CAMO
AHA2PL-WDCM



BORO
AHA2PL-BORO



NAVAJO
AHA2PL-NVJO



NIGHT ROSE
AHA2PL-NTRS



HUNTER
AHA2PL-HNTR





SPECIFICATIONS

Embroidered Airhole Mouth Piece

Trou d'aération signature brodée Airhole Embroidered
オリジナルAirholeマウスピース (刺しゅう入り)
Airhole Besticktes Mundstück

Hydrophobic Fabric

Tissu hydrophobe
疎水性布地
Wasserabweisendes Material

DWR + Polyester + Spandex Microfleece

Micro-Fibre Polyester + Spandex
マイクロファイバーポリエステル + スパンデックス
Polyester + Spandex Microfleece

BENEFITS

Breathe Free with Airhole

Respirez gratuit avec Airhole
Airhole を通し、自然な呼吸が可能
Freies Atmen mit Airhole

Stays Warm When Wet

Restez au chaud même quand il est mouillé
ウェザープロテクション
Bleibt auch bei Nässe warm

Comfortable & Protective

Confortable et protecteur
快適で安全
Bequem & Schützend



BLACK
AHAIMF-BLK



HEATHER BLACK
AHAIMF-HRBK



HEATHER GREY
AHAIMF-HRGY



HEATHER PINK
AHAIMF-HRPK

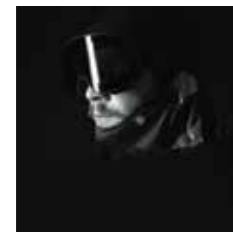


HEATHER NAVY
AHAIMF-HRNV



HEATHER GREEN
AHAIMF-HRGN





SPECIFICATIONS

Silicone Injected Airhole Mouth Piece

Trou d'aération signature Airhole en silicone injecté
オリジナルAirholeマウスピース (シリコン注入加工)
Airhole Mundstück aus eingespritztem Silikon

Signature Design Velcro

Signature design en Velcro
シグネチャーデザインベルクロ
Einzigartiges Klettverschluss-Design

2 Layer DWR Coated Recycled Polyester

Revêtement DWR 2 Couches - Polyester recyclé
DWR加工が施された2層のリサイクルポリエステルを使用
2 Layer DWR Coated Wiederverwertbare Polyester

BENEFITS

Simple Elastic + Velcro Adjustability

Ajustable par la structure élastique + Velcro
シンプルな弾性+ベルクロで調整可能
Einfachheit, Elastizität + Verstellbarkeit via Klettverschluss

10,000mm Water + Wind Resistant Outer

Résistant aux vents extérieurs + résistant à 10 000 mm d'eau
10m防水+防風のアウター
Wasserbeständig bis 10.000 mm und windbeständige Oberfläche

Brushed Fleece Lining for Warmth

Double laine brossée pour plus de chaleur
密植フリースライニングで温かく
Angeraute Fleece-Innenseite für mehr Wärme



BLACK
AHA32L-BLK



DECO
AHA32L-DECO



DIP DYE
AHA32L-DPDY



GREY BONES
AHA32L-GYBN



TROPICS
AHA32L-TROP



ANGLER
AHA32L-ANGR





SPECIFICATIONS

Silicone Injected Airhole Mouth Piece

Trou d'aération signature Airhole en silicone injecté
オリジナルAirholeマウスピース (シリコン注入加工)
Airhole Mundstück aus eingespritztem Silikon

DWR Coated for Water Resistance

Revêtement DWR pour Résistant à l'eau
DWR撥水加工済み
Wasserabweisende DWR Imprägnierung

3 Layer DWR Coated Recycled Polyester

Revêtement DWR 3 Couches - Polyester recyclé
DWR加工が施された3層のリサイクルポリエステルを使用
3 Layer DWR Coated Wiederverwertbare Polyester

BENEFITS

Stretch Drytech Back for Comfort

Revêtement du dos avec technologie Stretch Drytech pour plus confort
伸縮性Drytechのバックで快適
Dehnbare Drytech Rückseite für mehr Komfort

20,000mm Water + Wind Resistant

20,000mm Résistant à l'eau et le vent
20,000mm の防水と防風
20,000mm Wassersäule und Wind abweisend

Ergonomic Shape

Forme ergonomique
人間工学に基づいた形状
Ergonomische Form



BLACK
AHA43L-BLK



MAGENTA
AHA43L-MGNT



PACIFIC BLUE
AHA43L-PCBL



HEATHER GREY
AHA43L-HGRY



TOPOGRAPHIC BLACK
AHA43L-TPBK





BLACK
AHA3IN-BLK

LEOPARD
AHA3IN-LPRD

WASHED GREY
AHA3IN-WSGY



SPECIFICATIONS

Silicone Injected Airhole Mouth Piece

Trou d'aération signature Airhole en silicone injecté
オリジナルAirholeマウスピース (シリコン注入加工)
Airhole Mundstück aus eingespritztem Silikon

DWR Coated for Water Resistance

Revêtement DWR pour Résistant à l'eau
DWR撥水加工済み
Wasserabweisende DWR Imprägnierung

Recycled Polyester with Duck Down

Polyester recyclé à 100% avec Duvet d'oies
100%リサイクルポリエステル&羽毛
100% Recyceltem Polyester mit Ente unten



BENEFITS

Elastic Binding Holds Shape

La structure élastique maintient la forme
弾性バインディングが形状を保持
Elastisches Band für die Beibehaltung der Form

10,000mm Water + Wind Resistant Outer

Résistant aux vents extérieurs + résistant à 10 000 mm d'eau
10m防水+防風のアウトター
Wasserbeständig bis 10.000 mm und windbeständige Oberfläche

Brushed Tricot Face Lining

Doubleure au visage en tricot brossé
密植トリコットフェース裏地
Angerautes Trikotfutter



FACEMASKS

POLAR
2 LAYER
3 LAYER





SPECIFICATIONS

Silicone Injected Airhole Mouth Piece
 Trou d'aération signature Airhole en silicone injecté
 オリジナルAirholeマウスピース (シリコン注入加工)
 Airhole Mundstück aus eingespritztem Silikon

Signature Design Velcro
 Signature design en Velcro
 シグネチャーデザインベルクロ
 Einzigartiges Klettverschluss-Design

Polyester + Spandex Polar Fleece
 Polyester + Spandex Molletoné Polar
 ポリエステル + スパンデックスステックフリース
 Polyester + Spandex Polar Fleece

BENEFITS

Ergonomic Bandana Shape for Easy Wear
 Forme ergonomique de bandana pour un usage facile
 人間工学に基づくバンダナ形状で手軽に着用
 Ergonomische Bandana-Form für einfaches Tragen

DWR Coated for Water Resistance
 Revêtement DWR pour Résistant à l'eau
 DWR撥水加工済み
 Wasserabweisende DWR Imprägnierung

Stays Warm When Wet
 Restez au chaud même quand il est mouillé
 ウェザープロテクション
 Bleibt auch bei Nässe warm



BLACK
 AHS3PL-BLK



HEATHER CHARCOAL
 AHS3PL-HRCH



HEATHER GREY
 AHS3PL-HRGY



HEATHER MARINE
 AHS3PL-HRMR



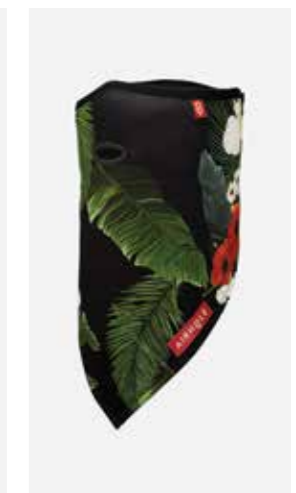
HEATHER PINK
 AHS3PL-HRPK



HEATHER WHITE
 AHS3PL-HRWT



SURVIVAL
 AHS3PL-SRVL



TROPICS
 AHS3PL-TROP





SPECIFICATIONS

Silicone Injected Airhole Mouth Piece
 Trou d'aération signature Airhole en silicone injecté
 オリジナルAirholeマウスピース (シリコン注入加工)
 Airhole Mundstück aus eingespritztem Silikon

Signature Design Velcro
 Signature design en Velcro
 シグネチャーデザインベルクロ
 Einzigartiges Klettverschluss-Design

2 Layer DWR Coated Recycled Polyester
 Revêtement DWR 2 Couches - Polyester recyclé
 DWR加工が施された2層のリサイクルポリエステルを使用
 2 Layer DWR Coated Wiederverwertbare Polyester

BENEFITS

Patented Design
 Conception brevetée
 特許設計
 Patentiertes Design

10,000mm Water + Wind Resistant Outer
 Résistant aux vents extérieurs + résistant à 10 000 mm d'eau
 10m防水+防風のアウター
 Wasserbeständig bis 10.000 mm und windbeständige Oberfläche

Brushed Fleece Lining for Warmth
 Doublure polaire brossée pour plus de chaleur
 密植フリースライニングで温かく
 Angeraute Fleece-Innenseite für mehr Wärme



BLACK
 AHS12L-BLK



HEATHER GREY
 AHS12L-HRGY



ESTUARY
 AHS12L-ESTY



WASHED MARINE
 AHS12L-MRWS



PINK WASH
 AHS12L-PKWS



DIP DYE
 AHS12L-DPDY



SPLATTER
 AHS12L-SPLT



WASHED DYE
 AHS12L-WSDY





STORM
AHS12L-STRM



DUST
AHS12L-DUST



HORIZON
AHS12L-HRZN



DECO
AHS12L-DECO



PALMS
AHS12L-PALM



LEOPARD
AHS12L-LPRD



BLACK PAISLEY
AHS12L-BKPS



BORO
AHS12L-BORO



WHITE BUFFALO
AHS12L-WTBF



ELECTRIC DYE
AHS12L-ELDY



WHITE ROSE
AHS12L-WTRS



MIDNIGHT FLORAL
AHS12L-MFLR



RAIN CAMO
AHS12L-RNCM



WOODLAND CAMO
AHS12L-WDCM



ZEBRA
AHS12L-ZBRA



LOGO
AHS12L-LOGO

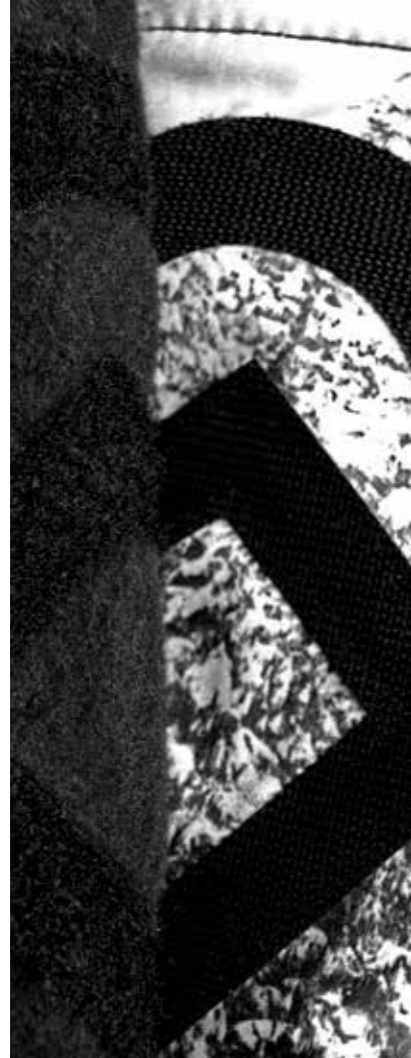


BONES
AHS12L-BONE



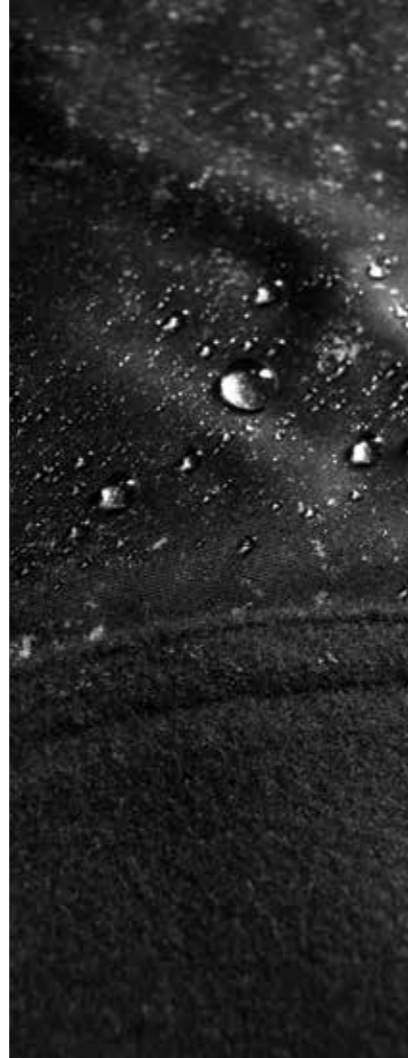
NORDIC
AHS12L-NRDC





01
**SIGNATURE DESIGN
VELCRO**

Airhole's Signature Design Velcro utilizes a softer, easier-to-use logo shaped velcro which is applied to the masks. This gives great coverage and makes adjustment incredibly easy. The new velcro allows the hooks only to catch the loops and avoids hair or anything else that may be caught.



02
10,000mm WATER RESITANT

The Standard Facemask fabric is treated with DWR, a durable fabric coating which gives Airhole masks water repellent properties, preventing the face and outer layer of the fabric from becoming saturated with water. Matched with a 10,000mm membrane and brushed fleece lining, the Standard Facemask is the ultimate.



03
RECYCLED FABRIC

The Standard Facemask uses yarn for the outer fabric that has been made from recycled PET plastic bottles that are chipped, melted and extruded into a fine polyester yarn. This reduces the impact on the environment without sacrificing performance or quality.



HUNTER
AHSI2L-HNTR



NAVAJO
AHSI2L-NVJO



OUTDOOR
AHSI2L-OTDR



RED BUFFALO
AHSI2L-RDBF



PENGUINS
AHSI2L-PEN



DOGS
AHSI2L-DOGS



POLAR BEARS
AHSI2L-PLBR



MEOW
AHSI2L-MEOW





AVIATOR
AHSI2L-AVTR



BEAR
AHSI2L-BEAR



YETI
AHSI2L-YETI



CANADA
AHSI2L-CAN



USA
AHSI2L-USA



COLORADO
AHSI2L-COL



SHARK
AHSI2L-SHRK



SKULL
AHSI2L-SKL



SNOW TIGER
AHSI2L-SNTG



SOUVENIR
AHSI2L-SVNR



RESORT
AHSI2L-RSRT



BLACKTUSK
AHSI2L-BKTS



ANGLER
AHSI2L-ANGL



SQUADRON
AHSI2L-SQDN



SCALES
AHSI2L-SCLE



MATTERHORN
AHSI2L-MTHR



SNOW GHOSTS
AHSI2L-SNGT



CHAMONIX
AHSI2L-CHAM





SPECIFICATIONS

Silicone Injected Airhole Mouth Piece

Trou d'aération signature Airhole en silicone injecté
 オリジナルAirholeマウスピース (シリコン注入加工)
 Airhole Mundstück aus eingespritztem Silikon

Signature Design Velcro

Signature design en Velcro
 シグネチャーデザインベルクロ
 Einzigartiges Klettverschluss-Design

3 Layer DWR Coated Recycled Polyester

Revêtement DWR 3 Couches - Polyester recyclé
 DWR加工が施された3層のリサイクルポリエステルを使用
 3 Layer DWR Coated Wiederverwertbare Polyester

BENEFITS

Patented Design

Conception brevetée
 特許設計
 Patentiertes Design

20,000mm Water + Wind Resistant

20,000mm Résistant à l'eau et le vent
 20,000mm の防水と防風
 20,000mm Wassersäule und Wind abweisend

Brushed 3rd Layer for Comfort

3 couches brossées pour plus de confort
 第3の密植レイヤーを追加し更に快適
 Angeraute 3. Schicht für mehr Komfort



BLACK
 AHS23L-BLK



MAGENTA
 AHS23L-MGNT



PACIFIC BLUE
 AHS23L-PCBL



HEATHER GREY
 AHS23L-HGRY



TOPOGRAPHIC BLACK
 AHS23L-TPBK



BALACLAVAS

DRYLITE
DRYTECH
WAFFLEKNIT
MERINO
FEATHERLITE
POLAR
MICROFLEECE + DRYTECH
2 LAYER
3 LAYER
INSULATED





SPECIFICATIONS

Laser Welded Airhole Mouth Piece
 Trou d'aération signature Airhole Welded coupé au laser
 オリジナルAirholeマウスピース (レーザー加工)
 Airhole Lasergeschweißtes Mundstück

UPF 50 for 98% Sun Protection
 UPF 50 pour 95% de protection solaire
 UPF 50 の日焼け予防効果
 98% Sonnenblocker bearbeitet mit UPF 50

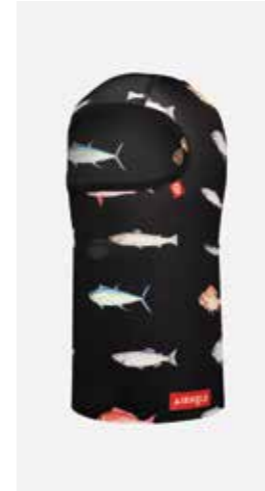
Perforated Drylite Polyester + Lycra
 Polyester +Lycra Drylite perforé
 穴あけ加工Dryliteポリエステル+ライクラ
 Drylite Polyester + Lycra, perforiert

BENEFITS

Classic Shape
 Forme classique
 クラシックな形
 Klassische Form

Moisture Wicking
 évacuation de l'humidité
 速乾
 Feuchtigkeitsabführend

Quick Dry
 Séchage ultra rapide
 速乾
 Schnell Trocknend



ANGLER
 AHB2DL-ANGL



BADLANDS
 AHB2DL-BAD



SURVIVAL
 AHB2DL-SRVL



SOUVENIER
 AHB2DL-SVNR



TROPICAL
 AHB2DL-TROP



WASHED BLACK
 AHB2DL-WSBK

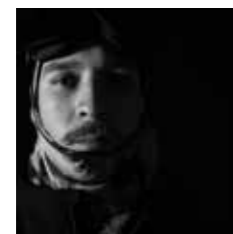


WASHED DYE
 AHB2DL-WSDY



WASHED GREY
 AHB2DL-WSGY





SPECIFICATIONS

Laser Welded Airhole Mouth Piece
 Trou d'aération signature Airhole Welded coupé au laser
 オリジナルAirholeマウスピース (レーザー加工)
 Airhole Lasergeschweißtes Mundstück

DWR Coated for Water Resistance
 Revêtement DWR pour Résistant à l'eau
 DWR撥水加工済み
 Wasserabweisende DWR Imprägnierung

Fine Yarn Polyester + Spandex Drytech
 Fils fins Polyester + Spandex Drytech
 ファイン糸ポリエステル + スパンデックスDrytech
 Feines Garn Polyester + Spandex Drytech

BENEFITS

Ergonomic to Hinge + Fit Goggles Seamlessly
 Ergonomique à la charnière + Fit des lunettes de façon transparente
 人間工学に基づいたヒンジフィットゴーグル
 Ergonomisch zu Scharnier + Fit Brille nahtlos

Water Resistant
 Résistant à l'eau
 耐水
 Wasserfest

Brushed Inside for Warmth & Comfort
 Brossé intérieur pour plus de chaleur et de confort
 内部繊維の密植で温かく快適な着け心地
 Angeraute Innenseite für Wärme & Komfort



BLACK
 AHBIDT-BLK



RAIN CAMO
 AHBIDT-RNCM



RED BUFFALO
 AHBIDT-RDBF



OUTDOOR
 AHBIDT-OTDR



STORM
 AHBIDT-STRM



SHARK
 AHBIDT-SHRK



SKULL
 AHBIDT-SKL



SNOW TIGER
 AHBIDT-SNTG



SASQUATCH
 AHBIDT-SASQ





SPECIFICATIONS

Silicone Injected Airhole Mouth Piece

Trou d'aération signature Airhole en silicone injecté
オリジナルAirholeマウスピース (シリコン注入加工)
Airhole Mundstück aus eingespritztem Silikon

DWR Coated for Water Resistance

Revêtement DWR pour Résistant à l'eau
DWR撥水加工済み
Wasserabweisende DWR Imprägnierung

Polyester + Lycra Waffleknit

Polyester + Lycra tricoté en point gaufre
ポリエステル+ライクラ ワッフルニット
Polyester + Lycra Waffelmuster

BENEFITS

Full Hinge Provides Adaptable Use

Le dispositif d'articulation complet permet une utilisation adaptable
フルヒンジで状況に応じた使用が可能
Vollständiges Bandsystem für anpassungsfähige Nutzung

Water Resistant

Résistant à l'eau
耐水
Wasserfest

Heat Management

Gestion de la chaleur
熱管理
Wärmemanagement



BLACK
AHB5WK-BLK



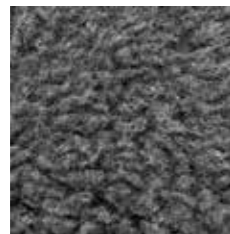
TECH ARMY
AHB5WK-TCAR



TECH BLUE
AHB5WK-TCBL



TECH GREY
AHB5WK-TCGY



SPECIFICATIONS

Embroidered Airhole Mouth Piece

Trou d'aération signature brodée Airhole Embroidered
オリジナルAirholeマウスピース (刺しゅう入り)
Airhole Besticktes Mundstück

Natural Fibre Insulator + Weather Resistor

Isolation de fibré naturel et résistant aux intempéries
天然繊維を使用したインサレーション/撥水加工済み
Naturfaser Insolation und Wetter abweisend

95% Merino Wool + 5% Spandex

95% laine mérinos + 5% spandex
95%メリノウール + 5% スパンテックス
95% Merino Wolle + 5% Elasthan

BENEFITS

No Odor

Aucune odeur
無臭
Geruchlos

Stays Warm When Wet

Restez au chaud même quand il est mouillé
ウェザープロテクション
Bleibt auch bei Nässe warm

Renewable and Biodegradable

Renouvelable et biodegradable
再生可能および生分解性
Erneuerbare und biologisch abbaubar



BLACK
AHBIMR-BLK



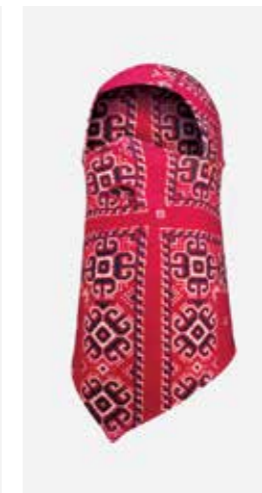
HEATHER GREY
AHBIMR-HRGY



WASHED MARINE
AHBIMR-WSMR



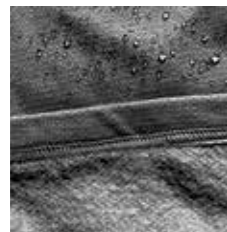
DUST
AHBIMR-DUST



BURGUNDY PAISLEY
AHBIMR-BRPS



WHITE BUFFALO
AHBIMR-WTBF



SPECIFICATIONS

Silicone Injected Airhole Mouth Piece

Trou d'aération signature Airhole en silicone injecté
オリジナルAirholeマウスピース (シリコン注入加工)
Airhole Mundstück aus eingespritztem Silikon

Seamless Knitting for Breathability

Tricot sans couture pour faciliter la respiration
精細な編み目で自然な呼吸が可能
Nahtloses Strickverfahren für Atmungsaktivität

Nylon + Polyester + Spandex Featherlite

Nylon 55% Polyester 40% Spandex 5%
55%ナイロン 40%ポリエステル 5%スパンデックス
55% Nylon 40% Polyester 5% Elasthan

BENEFITS

Brushed Inside for Warmth & Comfort

Brossé intérieur pour plus de chaleur et de confort
内部繊維の密植で温かく快適な着け心地
Angeraute Innenseite für Wärme & Komfort

Moisture Wicking

évacuation de l'humidité
速乾
Feuchtigkeitsabführend

Quick Dry

Séchage ultra rapide
速乾
Schnell Trocknend



BLACK
AHB2FT-BLK



HYPER BLUE
AHB2FT-HYBL



HYPER GREY
AHB2FT-HYGY



HYPER ORANGE
AHB2FT-HYOR

ADDITIONAL NOTES

Fabric Stretches for One Size Fits Most

Respirez gratuit avec Airhole
Airholeを通し、自然な呼吸が可能
Freies Atmen mit Airhole



SPECIFICATIONS

Silicone Injected Airhole Mouth Piece

Trou d'aération signature Airhole en silicone injecté
オリジナルAirholeマウスピース (シリコン注入加工)
Airhole Mundstück aus eingespritztem Silikon

DWR Coated for Water Resistance

Revêtement DWR pour Résistant à l'eau
DWR撥水加工済み
Wasserabweisende DWR Imprägnierung

Polyester + Spandex Polar Fleece

Polyester + Spandex Molletoné Polar
ポリエステル + スパンドックステックフリース
Polyester + Spandex Polar Fleece

BENEFITS

Ergonomic to Hinge + Fit Goggles Seamlessly

Ergonomique pour s'articuler + s'adapter parfaitement aux lunettes
人間工学に基づくヒンジでゴーグルは隙間なくフィット
Ergonomisches Design für das nahtlose Einfügen + Anbringen einer Brille

Stays Warm When Wet

Restez au chaud même quand il est mouillé
ウェザープロテクション
Bleibt auch bei Nässe warm

Brushed Inside for Warmth & Comfort

Brossé intérieur pour plus de chaleur et de confort
内部繊維の密植で温かく快適な着け心地
Angeraute Innenseite für Wärme & Komfort



BLACK
AHBIP-CLK



HEATHER CHARCOAL
AHBIP-HRCH



HEATHER GREY
AHBIP-HRGY



HEATHER MARINE
AHBIP-HRMR



HEATHER PINK
AHBIP-HRPK



HEATHER WHITE
AHBIP-HRWT



LOGO
AHBIPL-LOGO



POLAR BEARS
AHBIPL-PLBR



RESORT
AHBIPL-RSRT



SPLATTER
AHBIPL-SPLT



WOODLAND CAMO
AHBIPL-WDCM



BORO
AHBIPL-BORO



NAVAJO
AHBIPL-NVJO

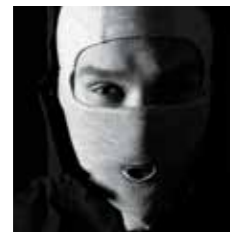


NIGHT ROSE
AHBIPL-NTRS



HUNTER
AHBIPL-HNTR





SPECIFICATIONS

Embroidered Airhole Mouth Piece

Trou d'aération signature brodée Airhole Embroidered
オリジナルAirholeマウスピース (刺しゅう入り)
Airhole Besticktes Mundstück

Hydrophobic Fabric

Tissu hydrophobe
疎水性布地
Wasserabweisendes Material

DWR Microfleece Neck + Drytech Hood

Textile micro polaire DWR autour du cou + cagoule Drytech
DWRマイクロフリースネック+Drytechフード
Hals aus DWR Microfleece + Haube aus Drytech-Material

BENEFITS

Water Resistant

Résistant à l'eau
耐水
Wasserfest

Stays Warm When Wet

Restez au chaud même quand il est mouillé
ウェザープロテクション
Bleibt auch bei Nässe warm

Drytech Hood Provides a Perfect Fit for Helmets

La cagoule Drytech offre un ajustement parfait pour les casques
Drytechフードがヘルメットに最適なフィットを提供
Drytech Haube bietet eine perfekte Passform für Helme



BLACK
AHB6MF-BLK



HEATHER BLACK
AHB6MF-HRBK



HEATHER GREY
AHB6MF-HRGY



HEATHER PINK
AHB6MF-HRPK



HEATHER NAVY
AHB6MF-HRNV



HEATHER GREEN
AHB6MF-HRGN



SPECIFICATIONS

Silicone Injected Airhole Mouth Piece

Trou d'aération signature Airhole en silicone injecté
オリジナルAirholeマウスピース (シリコン注入加工)
Airhole Mundstück aus eingespritztem Silikon

DWR Coated for Water Resistance

Revêtement DWR pour Résistant à l'eau
DWR撥水加工済み
Wasserabweisende DWR Imprägnierung

3 Layer DWR Coated Recycled Polyester

Revêtement DWR 3 Couches - Polyester recyclé
DWR加工が施された3層のリサイクルポリエステルを使用
3 Layer DWR Coated Wiederverwertbare Polyester

BENEFITS

Stretch Drytech Back for Comfort

Revêtement du dos avec technologie Stretch Drytech pour plus confort
伸縮性Drytechのバックで快適
Dehnbare Drytech Rückseite für mehr Komfort

20,000mm Water + Wind Resistant

20,000mm Résistant à l'eau et le vent
20,000mm の防水と防風
20,000mm Wassersäule und Wind abweisend

Ergonomic Shape

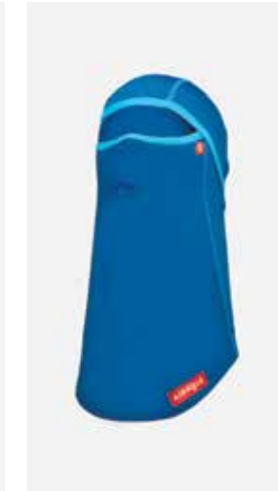
Forme ergonomique
人間工学に基づいた形状
Ergonomische Form



BLACK
AHB53L-BLK



MAGENTA
AHB53L-MGNT



PACIFIC BLUE
AHB53L-PCBL



HEATHER GREY
AHB53L-HGRY



TOPOGRAPHIC BLACK
AHB53L-TPBK



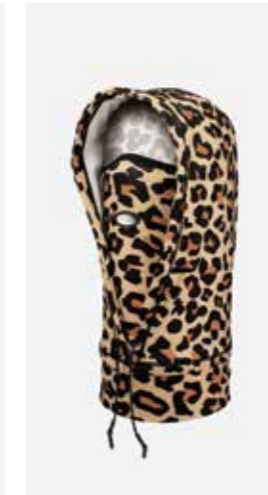
AIRHOODS

DRYTECH
POLAR + DRYTECH
INSULATED

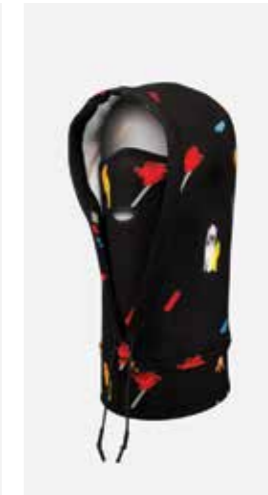




BLACK
AHB8DT-BLK



LEOPARD
AHB8DT-LPRD



DECO
AHB8DT-DECO



SPECIFICATIONS

Laser Welded Airhole Mouth Piece

Trou d'aération signature Airhole Welded coupé au laser
オリジナルAirholeマウスピース (レーザー加工)
Airhole Lasergeschweißtes Mundstück

DWR Coated for Water Resistance

Revêtement DWR pour Résistant à l'eau
DWR撥水加工済み
Wasserabweisende DWR Imprägnierung

Fine Yarn Polyester + Spandex Drytech

Fils fins Polyester + Spandex Drytech
ファイン糸ポリエステル + スパンテックスDrytech
Feines Garn Polyester + Spandex Drytech

BENEFITS

Hood Pulls Over for Extra Protection

Rajout de la cagoule pour une protection supplémentaire
フードは更なるプロテクションのために引き出し可能
Überziehbare Haube für zusätzlichen Schutz

Water Resistant

Résistant à l'eau
耐水
Wasserfest

Brushed Inside for Warmth & Comfort

Brossé intérieur pour plus de chaleur et de confort
内部繊維の密植で温かく快適な着心地
Angeraute Innenseite für Wärme & Komfort





SPECIFICATIONS

Laser Welded Airhole Mouth Piece

Trou d'aération signature Airhole Welded coupé au laser
オリジナルAirholeマウスピース (レーザー加工)
Airhole Lasergeschweißtes Mundstück

DWR Coated for Water Resistance

Revêtement DWR pour Résistant à l'eau
DWR撥水加工済み
Wasserabweisende DWR Imprägnierung

Polar Fleece Outer + Drytech Lining

Doublure polaire à l'extérieur + Drytech
ポーラーフリースアウター+Drytechライニング
Außenseite aus Polar Fleece + Innenfütterung mit Drytech

BENEFITS

3 Cinches for Adjustability

3 sangles pour l'ajuster
調節可能な3個のシグク
3 Gurte für Verstellbarkeit

Hood Pulls Over for Extra Protection

Rajout de la cagoule pour une protection supplémentaire
フードは更なるプロテクションのために引き出し可能
Überziehbare Haube für zusätzlichen Schutz

Brushed Inside for Warmth & Comfort

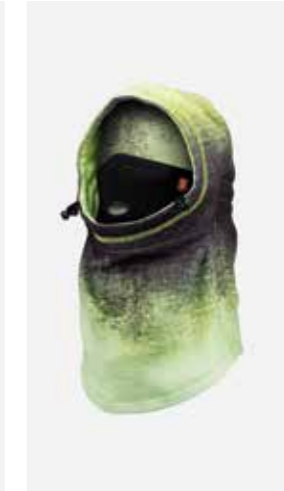
Brossé intérieur pour plus de chaleur et de confort
内部繊維の密植で温かく快適な着け心地
Angeraute Innenseite für Wärme & Komfort



BLACK
AHB3PL-BLK



HEATHER GREY
AHB3PL-HRGY



DIP DYE
AHB3PL-DPDY



PALMS
AHB3PL-PALM



RED BUFFALO
AHB3PL-RDBF



RAIN CAMO
AHB3PL-RNCM





SPECIFICATIONS

Embroidered Airhole Mouth Piece
 Trou d'aération signature brodée Airhole Embroidered
 オリジナルAirholeマウスピース (刺しゅう入り)
 Airhole Besticktes Mundstück

Compact + Portable + Protective
 Compact + Portable + Protecteur
 コンパクト+ポータブル+プロテクション
 Kompakt + Mobil + Schützend

Lightweight Nylon w/ Duck Down
 Nylon léger avec duvet de canard
 軽量ナイロン、ダックダウン入り
 Leichtes Nylon mit Entendaunen

BENEFITS

Hood Packs Away to Become Airtube
 Enlevez le dispositif de la cagoule pour le transformer en Airtube
 フードパックを取り外してAirtubeに
 Verstaubare Haube für Verwendung als Airtube

Water Resistant
 Résistant à l'eau
 耐水
 Wasserfest

Ergonomic Fit w/ Elastic Binding
 Coupe ergonomique avec structure élastique
 弾性バインディングにより人間工学に基づくフィット
 Ergonomische Passform mit elastischem Band



BLACK
 AHB9IN-BLK



CHARCOAL
 AHB9IN-CHAR



ARMY
 AHB9IN-ARMY



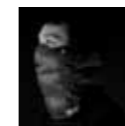
NAVY
 AHB9IN-NAVY



GREY
 AHB9IN-GREY



BURGUNDY
 AHB9IN-BUR



ERGONOMIC NECK GAITOR



HOOD PACKS AWAY
 BECOMING A NECK GAITOR



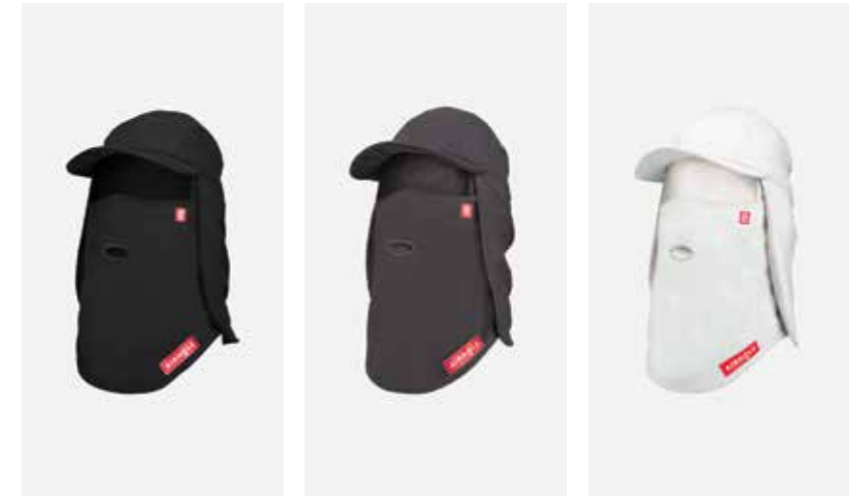
PULL OUT HOOD FOR
 EXTRA PROTECTION





TECH HATS

5 PANEL
TRAPPER
BUCKET



BLACK
AHB7RS-BLK

CHARCOAL
AHB7RS-CHAR

GREY
AHB7RS-GREY



SPECIFICATIONS

Silicone Injected Airhole Mouth Piece
Trou d'aération signature Airhole en silicone injecté
オリジナルAirholeマウスピース (シリコン注入加工)
Airhole Mundstück aus eingespritztem Silikon

Brim + Neck Gaiter for Weather Protection
Capuche + tour de cou pour la protection contre
les intempéries
ウェザープロテクションのためのブリム+ネックガイター
Kragen + Halsgamasche für Wetterschutz

2 Layer Outer + Brushed Fleece Lining
Doublure extérieure en 2 couches + doublure polaire brossée
2レイヤーアウター+密植フリースライニング
2-lagiges Obermaterial + Futter aus angerautem Fleece

BENEFITS

Back Adjustability
Réglage arrière
バック調整可能
Zurück Verstellbarkeit

10,000mm Water + Wind Resistant Outer
Résistant aux vents extérieurs + résistant à 10 000 mm d'eau
10m防水+防風のアウター
Wasserbeständig bis 10.000 mm und windbeständige Oberfläche

Removable Facemask w/ Zipper Pocket
Masque facial amovible avec poche zippée
脱着可能ファスナーマスク、ジッパーポケット付き
Abnehmbare Gesichtsmaske mit Reißverschluss tasche



NECK PROTECTION FOR SUN
AND WEATHER PROTECTION

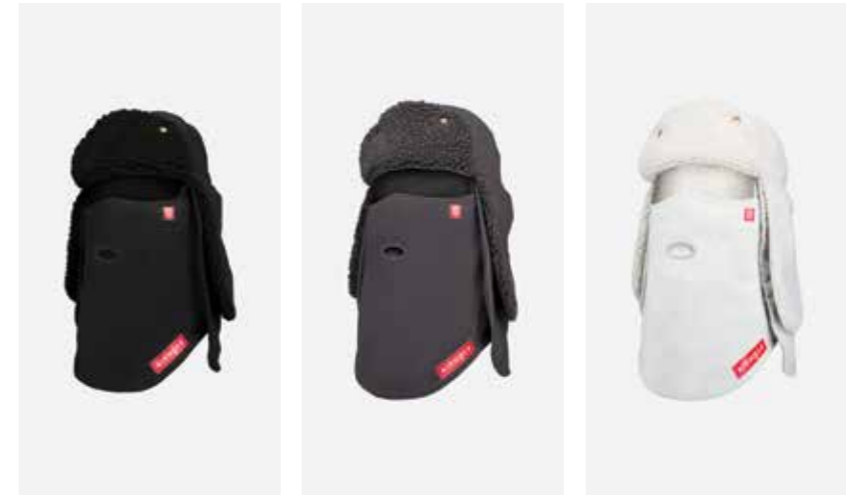


REMOVABLE FACEMASK FITS
INTO ZIPPERED POCKET



REAR FIT ADJUSTMENT &
ZIPPERED POCKET





BLACK
AHBIIRS-BLK

CHARCOAL
AHBIIRS-CHAR

GREY
AHBIIRS-GREY



SPECIFICATIONS

Silicone Injected Airhole Mouth Piece
Trou d'aération signature Airhole en silicone injecté
オリジナルAirholeマウスピース (シリコン注入加工)
Airhole Mundstück aus eingespritztem Silikon

Brim + Neck Gaiter for Weather Protection
Capuche + tour de cou pour la protection contre les
intempéries
ウェザープロテクションのためのブリム+ネックガイター
Kragen + Halsgamasche für Wetterschutz

2 Layer Outer + Brushed Fleece Lining
Doublure extérieure en 2 couches + doublure polaire brossée
2レイヤーアウター+密植フリースライニング
2-lagiges Obermaterial + Futter aus angerautem Fleece

BENEFITS

Back Adjustability
Réglage situé à l'arrière
バック調整可能
Rückseite verstellbar

10,000mm Water + Wind Resistant Outer
Résistant aux vents extérieurs + résistant à 10 000 mm d'eau
10m防水+防風のアウター
Wasserbeständig bis 10.000 mm und windbeständige Oberfläche

Removable Facemask w/ Zipper Pocket
Masque facial amovible avec poche zippée
脱着可能ファスナーマスク、ジッパーポケット付き
Abnehmbare Gesichtsmaske mit Reißverschluss tasche



TRAPPER DETAILS PROVIDE
ULTIMATE WARMTH AND COMFORT

REMOVABLE ERGONOMIC MASK
FITS INTO ZIPPERED POCKET

REAR FIT ADJUSTMENT &
ZIPPERED POCKET





BLACK
AHBIORS-BLK

CHARCOAL
AHBIORS-CHAR

GREY
AHBIORS-GREY



SPECIFICATIONS

Silicone Injected Airhole Mouth Piece

Trou d'aération signature Airhole en silicone injecté
オリジナルAirholeマウスピース (シリコン注入加工)
Airhole Mundstück aus eingespritztem Silikon

Brim + Neck Gaiter for Weather Protection

Capuche + tour de cou pour la protection contre les intempéries
ウェザープロテクションのためのブリム+ネックガイター
Kragen + Halsgamasche für Wetterschutz

2 Layer Outer + Brushed Fleece Lining

Doublure extérieure en 2 couches + doublure polaire brossée
2レイヤーアウター+密植フリースライニング
2-lagiges Obermaterial + Futter aus angerautem Fleece

BENEFITS

Back Adjustability

Réglage arrière
バック調整可能
Zurück Verstellbarkeit

10,000mm Water + Wind Resistant Outer

Résistant aux vents extérieurs + résistant à 10 000 mm d'eau
10m防水+防風のアウター
Wasserbeständig bis 10.000 mm und windbeständige Oberfläche

Removable Facemask w/ Zipper Pocket

Masque facial amovible avec poche zippée
脱着可能ファスナーマスク、ジッパーポケット付き
Abnehmbare Gesichtsmaske mit Reißverschlussentasche



NECK PROTECTION FOR SUN AND WEATHER PROTECTION



REMOVABLE ERGONOMIC MASK FITS INTO ZIPPERED POCKET



REAR FIT ADJUSTMENT & ZIPPERED POCKET





SKI
SEAN PETTIT



SNOWBOARD
ERIC JACKSON



OUTDOOR
JUSSI GRZNAR



SNOWBOARD
GIGI RŪF



SKI
CHRIS LOGAN



SNOWBOARD
MATT BELZILE



SNOWBOARD
RUSTY OCKENDEN



SKI
PARKER WHITE



SNOWBOARD
CHRIS RASMAN



SNOWBOARD
HELEN SCHETTINI



SNOWBOARD
PAT MOORE



SNOWBOARD
JOHN JACKSON



KEY FEATURES**THE AIRHOLE**

Featured on all of our masks, the Airhole allows breath to escape freely, avoiding the build up of condensation to keep you warm, dry and your goggles fog free. A dry mask ensures all day comfort and no bad odours.

RECYCLED FROM PET BOTTLES

Our recycled fabrics are made from 100% certified recycled PET (Polyethylene terephthalate) plastic bottles. Used water bottles are crushed, chipped, melted and extruded to make high quality polyester fibres.

WELDED AIRHOLE

The Welded Airhole is laser cut and heat transferred to the fabric to provide a lightweight, technical and minimal finish.

EMBROIDERED AIRHOLE

The Embroidered Airhole is a traditional sewing method used with knitted fabrics such as merino, cashmere or double layer microfleece to provide a soft, comfortable finish.

10,000mm WATERPROOF

Fabrics with a 10,000mm rating resist light rain, average snow and light water pressure to keep you warm and dry in most conditions.

MOISTURE WICKING

Our moisture wicking fabrics draw sweat, perspiration and condensation away from the skin keeping you warm and dry. Moisture evaporates from the fabric surface rather than getting trapped inside.

DWR (DURABLE WATER REPELLANT)

DWR is a durable fabric coating which gives our masks water repellent properties and is used to prevent the face and outer layer of the fabric from becoming saturated with water.

DIRECT INJECTED SILICONE AIRHOLE

The Direct Injected Airhole is applied with silicone directly to the fabric, bonding to the front and back to provide a comfortable, hygienic and easy to clean finish.

20,000mm WATERPROOF

Fabrics with 20,000mm rating resist heavy rain, wet snow and higher water pressure to keep you warm and dry in harsher conditions.

QUICK DRY

Our quick drying fabrics allow water, perspiration and condensation to evaporate much faster by distributing moisture across a larger surface area, keeping your skin warm and dry.

SIGNATURE DESIGN VELCRO

Our easy to use Velcro is now softer than ever and the applique design keeps masks flexible for unlimited movement, less bunching and prevents hair from catching.

ULTRAVIOLET PROTECTION FACTOR

The UPF rating indicates how effectively fabrics shield skin from harmful ultraviolet (UV) rays. The higher the UPF number, the greater degree of UV protection a garment offers. All Airholes have a minimum UPF rating of 50, blocking 98% of harmful UV rays.

MULTI-USE

Our multi-use designs give our masks great versatility allowing them to be worn as neck gaiters, facemasks, balaclavas and headbands.

FABRIC DESCRIPTIONS**2 LAYER**

2 Layer is a high performance dual layer fabric with a bonded waterproof breathable membrane offering a 10,000mm water-resistant outer and a soft, comfortable lining that is perfect for all conditions.

3 LAYER

3 Layer is our most technical fabric construction, featuring a hypoallergenic finish, windproof bonded 3 layer fabric with a waterproof breathable membrane offering a 20,000mm water repellency. These masks ensure comfort and performance in harsh conditions.

DRYTECH

Drytech is a high performance DWR treated microfibre fabric that wicks moisture and regulates temperature, making it perfect for all conditions.

FEATHERLITE

Featherlite is a seamless construction that has superior moisture wicking properties and a comfortable stretch design. Favoured by our pro athletes, Featherlite performs in all conditions.

INSULATED

Insulated fabrics 2 layer 10,000mm water resistant, are 100% down filled with a soft Tricot lining to provide the warmest finish with minimal weight. These masks are guaranteed to keep the cold at bay in harsh conditions.

MICROFLEECE

Microfleece is a traditional lightweight, soft fabric that stays warm even when wet. With great moisture wicking properties and our DWR coating it keeps your face cozy and warm in varied conditions.

POLAR

Polar is a high performance microfibre DWR fleece that wicks moisture and protects against cold. Polar is our most popular fabric construction thanks to its versatility in all conditions.

WAFFLEKNIT

Waffle Knit is a technical gridded fleece fabric that repels weather and allows air to flow freely to keep you warm and dry. Waffle Knit is stretchy, comfortable and great for all conditions.

DRYLITE

Drylite is a lightweight, seamless construction that acts like a second skin. With incredible moisture wicking properties and our UPF 50 finish, Drylite is ideal for spring conditions.

MERINO

Merino wool is a highly technical, natural fibre that has superior heat managing and moisture wicking properties and prevents odor. Merino is light weight allowing facemasks to be smaller and more compact without sacrificing performance in all conditions.

MASK USE AND SIZE**MASK SIZING**

Airhole masks vary in size and fit depending on the fabric and style. Most masks are available in SM or ML and some in One Size only when the fabrics are super stretchy accommodating multiple head shapes and sizes. S/M masks are most suitable for smaller faces, women or youth. M/L masks are most suitable for larger faces, men or older teens. SM masks Airhole is situated closer to the top of the mask than the ML to allow a perfect fit.

AIRTUBES

AIRTUBE

Our classic Airtube shape has a straight top and bottom finish for an easy-to-wear fit. Wear it down as a cozy neck gaiter, as a headband to keep your ears warm or pull it up to seal out the elements.

AIRTUBE GAITOR

Our Airtube Gaitor provides the ultimate cold weather protection. Utilizing a rear technical strap to adjust the fit of the mask, the Airtube Gaitor gives comfort with style and protection.

AIRTUBE ERGO

Our ergonomic Airtubes contour to the face to provide the best possible fit. The shape matches perfectly with your goggles to seal out the elements.

AIRHOODS



AIRHOOD

Our Balaclava Airhood is street inspired and has a customizable fit with 3 cinch zones. It will fit over a helmet or beanie and works as a stand-alone hood for keeping out the elements all whilst protecting your face with the built in mask.

AIRHOOD PACKABLE

Water resistant, warm, and portable, the Packable Airhood is the ultimate travel companion. Wear as a neck gaitor in any condition or pull out the hood to provide superior warmth and protection in harsh conditions.

AIRHOOD LITE

A nod to street styling, the Airhood Lite is a technical perspective of wearing a hoody in the alpine. The Drytech DWR fabric resists the elements when wore as an Airtube. Use the hood in harsh conditions, providing full coverage, including over a helmet.

FACEMASKS

FACEMASK BANDANA

Our Standard Lite facemask is where Airhole began. Like a traditional bandana, this facemask is made technical by including the signature Airhole breath hole, specialist fabrics, and our Signature Design Velcro.

FACEMASK STANDARD

Our Standard Facemask is our patented design that revolutionized the facemask category and continues to be the worlds best selling mask. The masks is 2 Layer with a high performance dual layer recycled fabric with a bonded waterproof breathable membrane offering a 10,000mm water-resistant outer and a soft, comfortable lining that is perfect for all conditions.

TECH HATS

5 PANEL

Keep dry and comfortable in all conditions, the 5 Panel hat provides mountain protection with street styling. Featuring a DWR outer coating, a 10,000mm waterproof membrane, and warm fleece lining, the 5 Panel is the ultimate mountain hat. The added skirt and removable facemask ensure no skin is exposed to the elements. Pack the removable facemask in to the zippered pocket when not required.

TRAPPER

Updating the classic silhouette with modern features, the Trapper hat provides superior protection from the elements. Featuring a DWR outer coating, a 10,000mm waterproof membrane, and warm fleece lining, the Trapper hat has the classic styling with added innovation. The added skirt and removable facemask ensure no skin is exposed to the elements. Pack the removable facemask in to the zippered pocket when not required.

BUCKET

Ideal for the sun drenched mountain days, the Bucket hat takes an outdoor staple and innovates it. Featuring a DWR outer coating, a 10,000mm waterproof membrane, and warm fleece lining, the Bucket Hat is now a functional alpine necessity. The added skirt and removable facemask ensure no skin is exposed to the elements. Pack the removable facemask in to the zippered pocket when not required.

BALACLAVAS

BALACLAVA CLASSIC

Our classic Balaclava shape provides head and full-face protection. The Balaclava Classic has a perfect fit under helmets by eliminating the need for a beanie.

BALACLAVA FULL HINGE

Full Hinge Balaclava provides more flexibility to the wearer by splitting the top and bottom sections, giving you 4 masks in 1. The full balaclava seals out the elements whilst the front can hinge down to free your face. Keep the face up and pull down the top for better temperature control or pull it all down for a classic neck gaiter.

BALACLAVA HINGE

The bedrock of the Airhole range, our Balaclava Hinge allows fabric with less stretch to function as full head and face protection whilst allowing you to pull the face portion under the chin to free your face and eliminating the need for a beanie.

BALACLAVA COMBO

Our Balaclava Combo utilizes a Drytech head with a dual layer microfleece face. This allows both heat management and protection when required whilst still providing comfort under a helmet.





Photography by:

MASON MASHON
SCOTT SERFAS
DARCY BACHA
RUSTY OCKENDEN
BLAKE JORGENSEN
SEAN LOGAN

Heading typeface: Texta
Body typeface: Quincy CF

Printed on PEFC approved stock 150gsm & 300gsm



FALL WINTER 2018/19 PRODUCT CATALOGUE
Designed at Endeavor Design Inc., Vancouver
Produced by Szyucai Printing, Shenzhen, China
© 2018/19 Airhole Facemasks Inc.

ACKNOWLEDGMENTS



LET'S GO TO
NEW PLACES

#Airhole #OutThere

I | FACEMASKS

3 LAYER
P. 60 / 61



2 LAYER
P. 82 / 89



POLAR
P. 307 / 31



INSULATED
P. 46 / 47



3 LAYER
P. 44 / 45



2 LAYER
P. 42 / 43



MICROFLEECE
P. 10 / 41



POLAR
P. 36 / 39



FEATHERLITE
P. 34 / 35



MERINO
P. 32 / 33



WAFFLEKNIT
P. 307 / 31



DRYTECH
P. 26 / 29



DRYLITE
P. 24 / 25



I | TECH HATS

BUCKET
P. 96 / 97



TRAPPER
P. 94 / 95



5 PANEL
P. 92 / 93



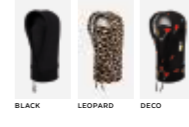
INSULATED
P. 88 / 89



POLAR
P. 86 / 87



DRYTECH
P. 84 / 85



3 LAYER
P. 80 / 81



MICROFLEECE
P. 76 / 79



POLAR
P. 74 / 77



FEATHERLITE
P. 72 / 73



MERINO
P. 70 / 71



WAFFLEKNIT
P. 68 / 69



DRYTECH
P. 66 / 67



DRYLITE
P. 64 / 65



